

2018

EDGE



Go Further

MASTER THE MOMENTS.



THE 2018 FORD EDGE

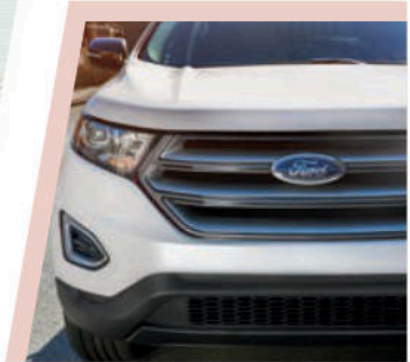
Your daily commute. A night on the town. Weekend road trips. With Ford Edge, you've got the responsive power and advanced technology¹ to make it all work for you. Four distinct trim levels let you choose a precisely honed Edge that asserts its presence everywhere you go. The well-equipped SE. Edge SEL, including a bold new SEL Sport Appearance Package. Titanium, with premium refinement and luxury features. And the performance-oriented Edge Sport that's always dressed and ready to play. Introducing the 2018 Ford Edge. Always Unstoppable.

2018 Edge | ford.com

Titanium. Ruby Red Metallic Tinted Clearcoat. Available equipment. ⁴Available feature.



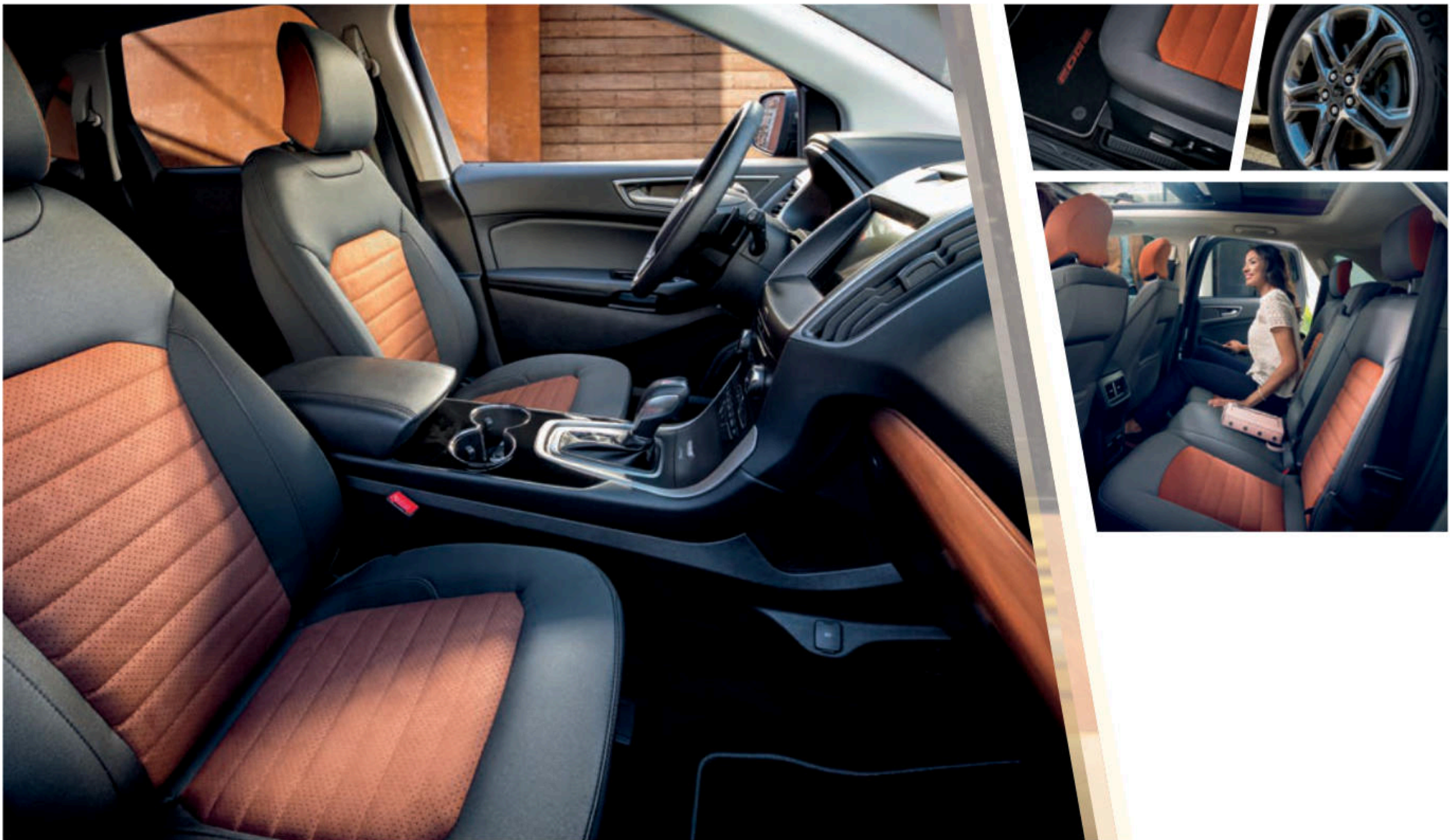
SHARPEN YOUR EDGE.



SEL SPORT APPEARANCE PACKAGE

On the outside, this package takes your 2018 Edge SEL to a bold new level. 19" premium Magnetic Metallic-painted aluminum wheels are complemented by color-coordinated accents, including the upper grille surround, front and rear skid plates, sideview mirror caps and rear spoiler.

You also get Silver Lining-painted upper grille bars. A unique headlamp treatment. And black beltline moldings. These finishing touches make it an Edge that's sure to be noticed.



SEL SPORT APPEARANCE PACKAGE

Inside, a high-contrast interior features Mayan Gray cloth-trimmed seats with Umber-colored Miko® perforated inserts. Front and rear Black carpeted floor mats include an Umber-colored "EDGE" logo up front. A unique Copper Sands appliqué accents the area above the glove box.

These exclusive features join a long list of SEL standards, such as: dual-zone electronic automatic temperature control, 10-way power driver's seat, 6-way power front-passenger seat, auto-dimming rearview mirror, and Reverse Sensing System.



CHOOSE YOUR CATALYST.

The 2018 Edge offers 3 distinctive engines, all paired with a 6-speed automatic transmission with SelectShift® capability. Enhance your driving experience with standard racing-style paddle shifters.

2.0L ECOBOOST®

245 horsepower! 275 lb.-ft. of torque! This twin-scroll turbocharged, direct-injection engine has robust low-end torque and virtually no turbo lag. Auto Start-Stop Technology, standard on SE FWD models, helps optimize fuel usage during stop-and-go city driving by shutting off the engine when you come to a complete stop. When you release the brake pedal, the engine seamlessly restarts.

Standard: SE/SEL/Titanium

2.7L ECOBOOST

315 horsepower! 350 lb.-ft. of torque! Under the hood of Edge Sport is where you'll find the most powerful member of the lineup. This dynamic twin-turbocharged, direct-injection engine offers best-in-class² gas V6 horsepower and torque.

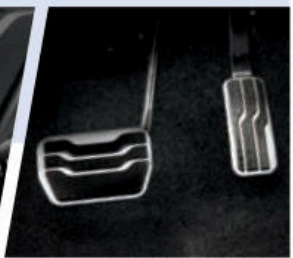
Standard: Sport

3.5L TI-VCT V6³

280 horsepower. 250 lb.-ft. of torque. Twin independent variable camshaft timing (TI-VCT) helps deliver robust horsepower without sacrificing efficiency. By allowing intake and exhaust valves to adjust independently for precise valve timing control, TI-VCT helps optimize performance on every drive.

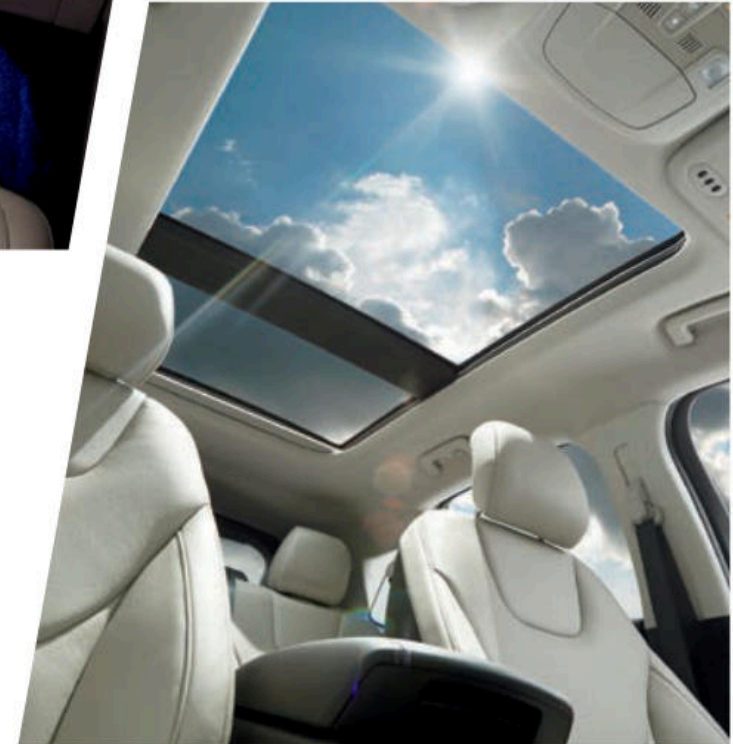
Optional: SEL/Titanium

TUNE YOUR PERFORMANCE.



EDGE SPORT

The performance-oriented Edge Sport, with its distinctive look, provides exceptional road-handling capability with a uniquely tuned, 4-wheel independent suspension. Standard all-wheel drive (AWD) delivers enhanced handling and maximized traction. Sport is always dressed and ready to play. And power? Plenty of it. The twin-turbocharged, direct-injection 2.7L EcoBoost® engine revs you up with best-in-class gas V6 horsepower (315¹) and torque (350 lb.-ft.¹). Plus, racing-style paddle shifters enhance your control of the 6-speed SelectShift® automatic transmission.



HITS ALL THE RIGHT NOTES.

Sophistication and craftsmanship come together here. No matter your destination or traveling companions, the 2018 Edge is designed to indulge, pamper and please. Starting with an exceptional 12-speaker Audio System from Sony.^{®1}

Titanium adds further indulgence with ambient lighting, illuminated front door-sill scuff plates and 10-way power, heated, leather-trimmed driver and front-passenger seats. A panoramic Vista Roof^{®1} with power open/close and power shade lets the light in – as often as you'd like.



APPLE CARPLAY™ COMPATIBILITY³

Use Siri to interact with your iPhone
Access your favorite songs and playlists in Apple Music®
Utilize Apple Maps for voice-guided navigation and estimated travel time



SYNC APPLINK®⁵

Voice control for your favorite compatible mobile apps
Spotify® ♦ Pandora® ♦ and more



VOICE-ACTIVATED NAVIGATION²

Turn-by-turn directions
Vivid 3-D maps
Pinch-to-zoom touchscreen capability



SIRIUSXM® TRAFFIC & TRAVEL LINK®^{2,6}

Complimentary for 5 years
Real-time traffic updates
Fuel station locations and prices
Current and forecasted weather
Movie locations and showtimes
Sports scores



FORDPASS™ SMARTPHONE APP⁴

Your personal journey assistant
Find fuel and compare prices
Find, reserve and pay for parking in select locations
Get help from our trained team of Ford Guides – available 24/7



ANDROID AUTO™ COMPATIBILITY³

Talk to Google™ to interact with your Android™ smartphone
Access your favorite music through your apps
Utilize Waze™ or Google Maps™ for voice-guided navigation and estimated travel time

SYNC 3

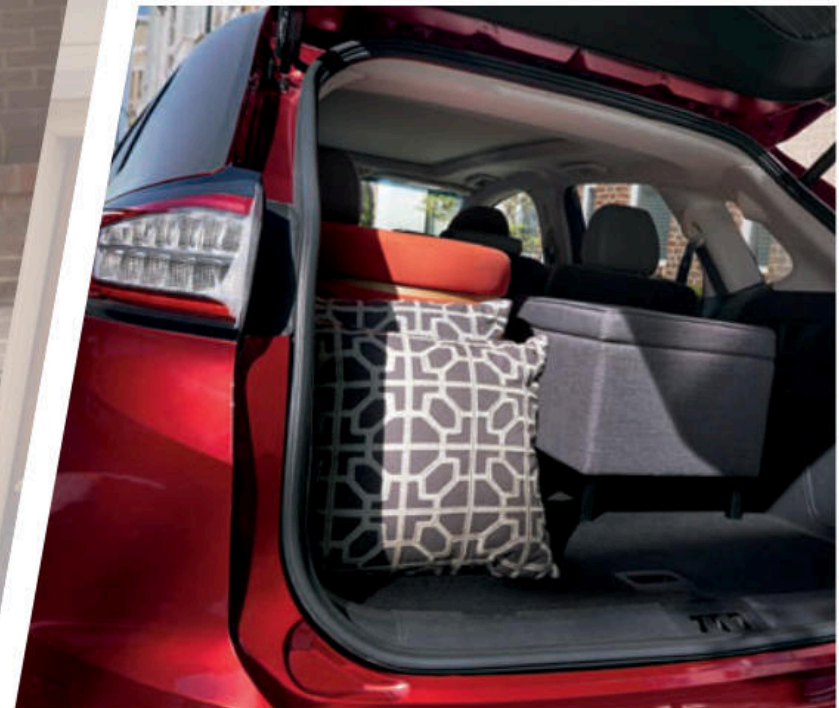
STAY CONNECTED ON THE MOVE.

Imagine controlling calls, music and more with just a touch and your voice. SYNC® 3^{1,2} lets you keep your hands on the wheel while it quickly responds to your spoken requests. Or use the responsive touchscreen in the center of your instrument panel to access its many helpful features. Bring the power of Siri® into Edge with Siri Eyes Free and your paired iPhone®. The system also features 2 smart-charging USB ports to help keep your devices powered up and ready to go.

2018 Edge | ford.com

¹Don't drive while distracted. Use voice-operated systems when possible; don't use handheld devices while driving. Some features may be locked out while the vehicle is in gear. Not all features are compatible with all phones. ²Available feature. ³Requires phone with active data service and compatible software. SYNC does not control 3rd-party products while in use. 3rd parties are solely responsible for their respective functionality. ⁴Available via download and compatible with select smartphone platforms. Learn more at fordpass.com. Message and data rates may apply. ⁵Commands may vary by phone and Applink software. ⁶Certain restrictions, 3rd-party terms, or message and data rates may apply. See footnote 1 in "Build Your Edge" section of Specifications, and your Ford Dealer for details.

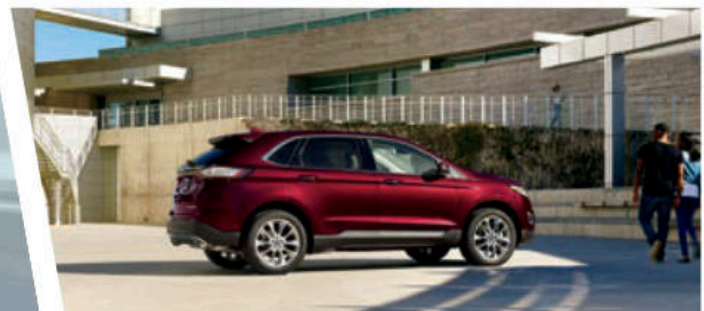




PUT YOUR BEST FOOT FORWARD

With the rear 60/40 split seat folded flat, Edge has an impressive 73.4 cu. ft. of cargo space. So there's a good chance your hands are going to be full when you're loading the cargo area. As long as your Intelligent Access key fob is tucked in your pocket or purse, just kick your foot under the rear bumper and let the hands-free foot-activated liftgate¹ do the work. This flexible accessibility can serve you well whether you're stowing gear or impulse shopping. Allowing Edge to be as versatile as you are.

GET HELP ALONG THE WAY.



IN TRAFFIC Adaptive cruise control & forward collision warning with brake support^{1,2} helps maintain your choice of speed and preset gaps from the vehicle in front of you. It can also alert you to a potential collision, and even pre-charge the brakes to provide full responsiveness when you do brake.

BETWEEN THE LINES Drifting out of your lane? The Lane-Keeping System^{1,2} can apply steering wheel torque, and even alert you with gentle steering wheel vibrations, to help direct you to return to your lane.³

WHEN CHANGING LANES BLIS[®] (Blind Spot Information System) with cross-traffic alert^{1,2,4} warns you if it detects a vehicle in either of your blind spots while driving forward, or approaching from the sides while backing up.

IN THE PARKING LOT Whether you're backing into a perpendicular spot or slowing down to parallel park, enhanced active park assist^{1,2} makes parking easy. Ultrasonic sensors can identify a spot, then the system steers the vehicle into it. All you have to do is follow on-screen prompts, and operate the accelerator, brake and gear shifter as needed. A front 180-degree camera¹ helps out with visibility and allows you to see around corners when slowly moving forward.

STANDARD FEATURES

Mechanical

4-wheel independent suspension
Active grille shutters (2.0L and 2.7L)
Electric power-assisted steering
Power disc brakes with Anti-Lock Brake System (ABS)
Torque Vectoring Control

Driver-Assist Technology

Autolamp automatic on/off headlamps
Hill start assist

Seating

Front bucket seats with 4-way adjustable head restraints
Driver and front-passenger seat back map pockets
60/40 split fold-flat rear seat with manually reclining seat backs and folding center armrest with 2 cupholders

Interior

12V powerpoints (4)
Acoustic-laminate windshield
Below-floor Rear Cargo Management System
Cargo area tie-down hooks
Cargo net
Coat hooks (2)
Compass and outside temperature displays
Cupholders/beverage holders (8)
Driver and front-passenger sun visors with illuminated vanity mirrors
Front and rear door-sill scuff plates
Front (2) and rear (2) grab handles
Front center console with storage tray, armrest, powerpoint and 2 cupholders
Intelligent Access with push-button start
Leather-wrapped shifter knob
Overhead console with map lights and sunglasses holder
Power door locks
Power windows with front one-touch-up/-down feature
Steering wheel-mounted cruise and audio controls

Exterior

Body-color rear spoiler
Configurable daytime running lamps
Easy Fuel[®] capless fuel filler
LED taillamps
Power sideview mirrors with integrated blind spot mirrors and manual fold-away design
Privacy glass (rear doors and quarter windows; liftgate window)
Quad-beam halogen headlamps
Rear-window defroster
Wipers – Front: speed-sensitive, variable-intermittent; rear: 2-speed

Safety & Security

Personal Safety System[™] for driver and front passenger includes dual-stage front airbags,¹ safety belt pretensioners, safety belt energy management retractors, safety belt usage sensors, driver's seat position sensor, crash severity sensor, restraint control module and Front-Passenger Sensing System
Driver's knee airbag¹
Glove-box-door-integrated knee airbag¹
Front-seat side airbags¹
Safety Canopy[®] side-curtain airbags¹ with rollover sensor
AdvanceTrac[®] with RSC[®] (Roll Stability Control[™]) and Curve Control
Battery saver with headlamps-off delay
Belt-Minder[®] front safety belt reminder
Child-safety rear door locks
Front height-adjustable shoulder safety belts
Individual Tire Pressure Monitoring System (excludes spare)
LATCH – Lower Anchors and Tether Anchors for Children (2 in rear outboard seating positions)
MyKey[®] technology to help encourage responsible driving
Rear view camera
SecuriLock[®] Passive Anti-Theft System
SOS Post-Crash Alert System[™]

POWERTRAINS/EPA-ESTIMATED RATINGS²

2.0L EcoBoost[®] I-4

Auto Start-Stop Technology
245 hp @ 5,500 rpm³ 275 lb.-ft. of torque @ 3,000 rpm³
6-speed SelectShift[®] automatic with steering wheel-mounted paddle shifters
FWD 21 city/29 hwy/24 combined mpg
Standard: SE FWD

2.0L EcoBoost I-4

245 hp @ 5,500 rpm³ 275 lb.-ft. of torque @ 3,000 rpm³
6-speed SelectShift automatic with steering wheel-mounted paddle shifters
FWD 20 city/29 hwy/24 combined mpg
AWD 20 city/27 hwy/23 combined mpg
Standard: SE AWD/SEL/Titanium

2.7L EcoBoost V6

315 hp @ 4,750 rpm³ 350 lb.-ft. of torque @ 2,750 rpm³
6-speed SelectShift automatic with steering wheel-mounted paddle shifters
AWD 17 city/24 hwy/20 combined mpg
Standard: Sport

3.5L Ti-VCT V6

280 hp @ 6,500 rpm 250 lb.-ft. of torque @ 4,000 rpm
6-speed SelectShift automatic with steering wheel-mounted paddle shifters
FWD 17 city/26 hwy/20 combined mpg
AWD 17 city/23 hwy/19 combined mpg
Optional: SEL/Titanium

SE



SEL



TITANIUM



SPORT



DIMENSIONS

Exterior	
Wheelbase	112.2"
Length	188.1"
Height	68.6"
Width – Excluding mirrors	75.9"
Width – Including mirrors	85.8"
Width – Mirrors folded	78.4"
Liftover height	29.7"

Interior	Front/Rear
Head room	40.2"/40.3"
Leg room	42.6" (max.)/40.6"
Hip room	55.9"/57.5"
Shoulder room	60.3"/60.5"

Capacities (cu. ft.)	
Passenger volume	113.9
Cargo volume behind front seats	73.4
Cargo volume behind rear seats	39.2
Fuel tank (gal.)	18.4 (FWD)/18.5 (AWD)

WHEELS



18" Sparkle Silver-Painted Aluminum
Standard: SE



18" Sparkle-Silver Painted Split-Spoke Aluminum
Standard: SEL



18" Polished Aluminum
Available: SEL/Titanium (requires snow chain-compatible tires on Titanium)



19" Nickel-Painted Aluminum
Standard: Titanium



19" Premium Magnetic Metallic-Painted Aluminum
Included: SEL Sport Appearance Package



20" Premium Polished Aluminum
Optional: Titanium¹



20" Bright-Machined Aluminum with Premium Dark Stainless-Painted Pockets
Optional: Titanium



20" Polished Aluminum with Magnetic Low Gloss-Painted Pockets
Standard: Sport



21" Premium Dark Tarnished Low Gloss-Painted Aluminum
Optional: Sport

EXTERIORS/INTERIORS

	SE	SEL	TITANIUM	SPORT
White Platinum Metallic Tri-coat ¹		3 4 5 6 7	7 8 9 10 11	12
Oxford White	1 2	3 4 5 7		
Ingot Silver ²	1 2	3 4 5 6 7	7 8 9 10 11	12
White Gold ²	1 2	3 4 5 7	7 8 9 11	
Lightning Blue ²		3 4 5 7	7 8 9 11	12
Ruby Red Metallic Tinted Clearcoat ¹		3 4 5 7	7 8 9 11	12
Burgundy Velvet Metallic Tinted Clearcoat ¹		3 4 5 6 7	7 8 9 10 11	12
Blue ²	1 2	3 4 5 6 7	7 8 9 11	
Magnetic ²	1 2	3 4 5 6 7	7 8 9 10	
Shadow Black	1 2	3 4 5 6 7	7 8 9 10 11	12

5,7: Requires 201A on SEL

6: Requires SEL Sport Appearance Package

9,10,11: Requires 301A or 302A on Titanium



1. Dune Cloth



2. Ebony Cloth



3. Unique Dune Cloth



4. Unique Ebony Cloth



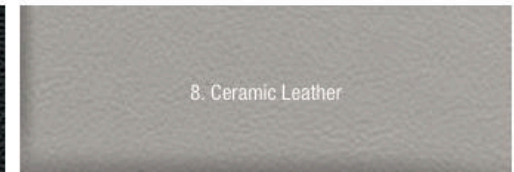
5. Dune Leather



6. Mayan Gray Cloth with Umber-colored Miko[®] Inserts



7. Ebony Leather



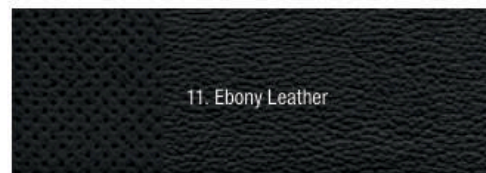
8. Ceramic Leather



9. Ceramic Leather



10. Cognac Leather



11. Ebony Leather



12. Ebony Leather with Miko Inserts



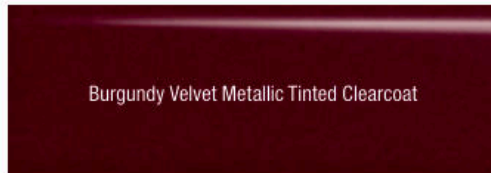
White Platinum Metallic Tri-coat



Ruby Red Metallic Tinted Clearcoat



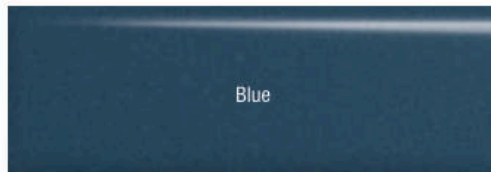
Oxford White



Burgundy Velvet Metallic Tinted Clearcoat



Ingot Silver



Blue



White Gold



Magnetic



Lightning Blue



Shadow Black



FORD ACCESSORIES

Edge Titanium in Magnetic accessorized with smoked side window deflectors¹ by EGR; Aeroskin™ hood protector by Lund¹; front and rear molded splash guards, and roof-mounted crossbars and cargo box by THULE^{1,2}

accessories.ford.com

Exterior

- Aeroskin hood protector¹
- Full vehicle cover¹
- Racks and carriers^{1,2}
- Rear bumper protector¹
- Side window deflectors¹
- Splash guards
- Sportz[®] tent¹
- Trailer towing accessories
- Wheel lock kit

Interior

- Ash cup/coin holders
- Cargo area protector (B)
- Cargo organizers and protectors
- Carpeted floor mats
- First aid and roadside assistance kits¹
- Floor liners (C)
- In-vehicle safe¹
- Leather-trimmed interior seating¹
- Tablet cradle¹
- UVS100[®] Custom Sunscreen¹

Electronics

- Bullfrog[®] portable Bluetooth[®] speakers¹
- Keyless entry keypad
- Rear seat entertainment¹ (A)
- Remote Access (D)
- Remote start systems
- Vehicle Security System
- Warning Sensor System¹

New Vehicle Limited Warranty. We want your Ford Edge ownership experience to be the best it can be. Under this warranty, your new vehicle comes with 3-year/36,000-mile bumper-to-bumper coverage, 5-year/60,000-mile Powertrain Warranty coverage, 5-year/60,000-mile safety restraint coverage, and 5-year/unlimited-mile corrosion (perforation) coverage – all with no deductible. Please ask your Ford Dealer for a copy of this limited warranty.

Roadside Assistance. Covers your vehicle for 5 years or 60,000 miles, so you have the security of knowing that help may be only a phone call away should you run out of fuel, lock yourself out of the vehicle or need towing. Your Ford Dealer can provide complete details on all of these advantages.

Ford Credit. Get the ride you want. Whether you plan to lease or finance, you'll find the choices that are right for you at Ford Credit. Ask your Ford Dealer for details or check us out at fordcredit.com.

Ford Protect Extended Service Plans. Whether you purchase or lease your Ford vehicle, insist on genuine Ford Protect extended service plans. Ford Protect has a variety of plans to give you peace-of-mind protection whether you want vehicle component or maintenance coverage. Plus, they are fully backed by Ford and honored at all Ford dealerships in the U.S., Canada and Mexico. When you visit your dealer, insist on genuine Ford Protect extended service plans.

Insurance Services. Get Ford Motor Company quality in your auto insurance. Our program offers industry-leading benefits and competitive rates. Call 1-877-367-3847, or visit us at fordvip.com for a no-obligation quote. Insurance offered by American Road Services Company (in CA, American Road Insurance Agency), a licensed agency and subsidiary of Ford Motor Company.

Ford Original Accessories. They're warranted for whichever provides you the greatest benefit: 24 months/unlimited mileage, or the remainder of your Bumper-to-Bumper 3-year/36,000-mile New Vehicle Limited Warranty. Ford Licensed Accessories (FLA) are warranted by the accessory manufacturer's warranty. FLA are designed and developed by the accessory manufacturer and have not been designed or tested to Ford Motor Company engineering requirements. Contact your Ford Dealer for details and/or a copy of all limited warranties.

Android, Android Auto, Google, Google Maps, Waze and logos are trademarks of Google Inc. Apple, Apple CarPlay, Apple Music, iPhone and Siri are trademarks of Apple Inc., registered in the U.S. and other countries. "HD Radio" and the HD Radio logo are proprietary trademarks of iBiquity Digital Corporation. Miko is a registered trademark of Miko s.r.l. PANDORA, the PANDORA logo, and the Pandora trade dress are trademarks or registered trademarks of Pandora Media, Inc. Used with permission. Sirius, XM and all related marks and logos are trademarks of Sirius XM Radio Inc. Sony is a registered trademark of the Sony Corporation. Spotify is a registered trademark of Spotify AB, Sweden. The Bluetooth word mark is a trademark of the Bluetooth SIG, Inc. THULE is a registered trademark of Thule Sweden AB. VOXXHirschmann is a service mark of VOXX International Corporation.

Comparisons based on competitive models excluding other Ford vehicles (class is Midsize Utilities based on Ford segmentation), publicly available information and Ford certification data at time of release. Vehicles may be shown with optional equipment. Features may be offered only in combination with other options or subject to additional ordering requirements/limitations. Dimensions shown may vary due to optional features and/or production variability. Information is provided on an "as is" basis and could include technical, typographical or other errors. Ford makes no warranties, representations, or guarantees of any kind, express or implied, including but not limited to, accuracy, currency, or completeness, the operation of the information, materials, content, availability, and products. Ford reserves the right to change product specifications, pricing and equipment at any time without incurring obligations. Your Ford Dealer is the best source of the most up-to-date information on Ford vehicles.

¹Ford Licensed Accessory. ²Consult owner's manual for details on roof-rack load limits.