


Go Further



2017
ESCAPE



GEAR UP AND GO. Whether loading gear or rafting the rapids, we are all adventure seekers. Hikers. And so much more. The destinations continually change. What really matters is the confidence to go. As well as the life-changing experiences shared along the way. Life is a Sport. We are the Utility. Be Unstoppable. The new 2017 Ford Escape.

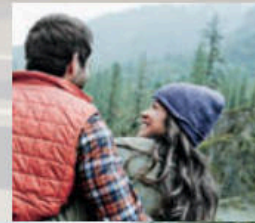
LIFE ISN'T RESERVED FOR THE WEEKEND.



Adventure isn't only found "out there." Sometimes, it's right around the corner. Waiting to be discovered. Thankfully, the new 2017 Ford Escape can take you confidently to both. With its spacious, versatile interior and remarkable new features, Escape empowers you to live in the moment. Every day of the week.

Eye-catching new exterior lighting¹ helps take you from pavement to picturesque with carefree confidence. The sculpted hood, dynamic new grille and athletic stance add adventure-bound appeal. A choice of 2 new EcoBoost[®] engines¹, plus advanced driver-assist technologies^{1,2} give you the freedom to pursue your passions.

Inside, the inspiration continues. SYNC[®] 3^{1,3} helps keep you connected to the world around you. A redesigned interior features room for up to 5, along with the cargo space to keep you ready for anything. So take a different route to work. Pull off at that scenic overlook – and take it all in. You never know what road will lead to your next great escape.





MOTIVATED TO MOVE.

ENGINES

2.5L IVCT

168 horsepower, 170 lb.-ft. of torque. The standard S powerplant, like all Escape engines, is paired with a 6-speed automatic transmission with SelectShift® capability.

*EPA-estimated rating:
21 city/29 hwy/24 combined mpg;¹ FWD*

NEW 1.5L EcoBoost


179 horsepower, 177 lb.-ft. of torque. This turbocharged, direct-injection engine, standard on SE and Titanium, has robust low-end torque and virtually no turbo lag. New paddle-shift technology enhances the driving fun on EcoBoost® models.

*EPA-estimated rating:
23 city/30 hwy/26 combined mpg;¹ FWD*

NEW 2.0L Twin-Scroll EcoBoost

245 horsepower,² 275 lb.-ft. of torque.² Expect quick torque delivery and improved responsiveness from this new, twin-scroll turbocharged, direct-injection engine.³ The twin-scroll design maximizes pulse energy to the turbine wheel for quick torque delivery when needed most – passing or merging onto a highway.

*EPA-estimated rating:
22 city/29 hwy/25 combined mpg;¹ FWD*



AUTO START-STOP TECHNOLOGY,

standard on EcoBoost engines, helps optimize fuel consumption and reduce emissions during stop-and-go city driving. The system will shut off the engine when you come to a complete stop, and seamlessly restart it when you release the brake pedal.



REDESIGNED AROUND YOU. Let the well-crafted interior of the new 2017 Escape elevate what you see, hear and touch. Enjoy fine materials and finishes. Calming noise isolation. Plus ample storage space, thanks to a new electric-assist parking brake that allows for an ergonomically placed gear shifter and new media bin at the base of the easy-to-navigate center console. Recharge your phones and tablets with up to 2 smart-charging USB ports.¹ Power laptops and other small electronics with a covered 110-volt power outlet¹ that conveniently accepts a household-style plug. Listen to everything you love with SiriusXM[®] Satellite Radio.^{1,2} Get over 150 channels including all kinds of commercial-free music, plus every major sport and the best talk, news, comedy and entertainment. And you'll hear it all with a 6-month trial subscription to the All Access package, included with your new Escape. So you can rock your ride, plus listen anywhere online and on the SiriusXM app.

2017 Ford Escape | ford.com

Titanium leather-trimmed interior in Charcoal Black with available equipment. ¹Available feature. ²SiriusXM audio and data services each require a subscription sold separately, or as a package, by SiriusXM Radio Inc. If you decide to continue service after your trial, the subscription plan you choose will automatically renew thereafter and you will be charged according to your chosen payment method at then-current rates. Fees and taxes apply. To cancel you must call SiriusXM at 1-866-635-2349. See SiriusXM Customer Agreement for complete terms at www.siriusxm.com. All fees and programming subject to change.





STYLED FOR ADVENTURE. Behind the solar-tinted glass of your fun-seeking Escape, you and your passengers will enjoy a spacious, well-appointed interior. A longer armrest on the center console is designed to help improve driving comfort, while a larger storage bin underneath easily stores today's large phones. A new heated steering wheel¹ helps take the chill out of early-morning adventures. New SE and Titanium Sport Appearance Packages offer partial leather-trimmed sport seats and striking black exterior accents, while Titanium models welcome you with standard 10-way power, heated, leather-trimmed front seats.





SYNC 3

In addition to all the voice-activated benefits of SYNC® – placing and answering calls, and controlling music from your devices – you'll love the easy-to-use interface of SYNC 3.^{1,2} An 8" color LCD screen displays phone, audio and navigation¹ features. Enhanced voice recognition lets you give simple commands. A capacitive touchscreen includes a convenient swipe feature, as well as pinch-to-zoom functionality within navigation.¹

SYNC Connect³

With a SYNC Connect equipped Escape, you can use FordPass® to track your vehicle's location and remotely access features such as start, lock and unlock, and vehicle status including fuel level and approximate mileage. You can also schedule specific times to remotely start your Escape so it's ready to hit the road as soon as you are.

SYNC AppLink

Use your voice to control some of your favorite compatible mobile apps (like Pandora® and iHeartAuto), thanks to standard SYNC AppLink.^{TM4}

Siri Seamless Integration

Bring the power of Siri® into Escape with Siri Eyes Free, your paired iPhone® and a long press of the voice recognition button on the steering wheel.

Automatic Updates Over Wi-Fi

Keep SYNC 3 current with the latest software as new updates become available.⁵ All you need is a Wi-Fi® connection.

2017 Ford Escape | ford.com

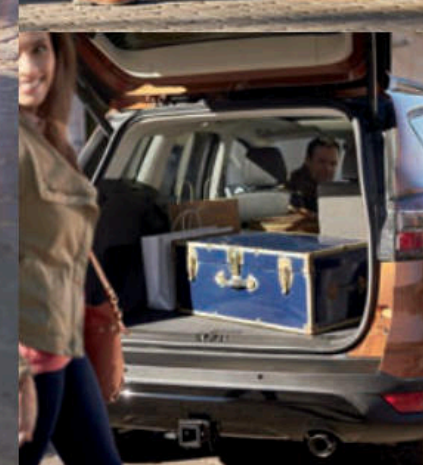
¹Available feature. ²Don't drive while distracted. Use voice-operated systems when possible; don't use handheld devices while driving. Some features may be locked out while the vehicle is in gear. Not all features are compatible with all phones. Message and data rates may apply. ³SYNC Connect is standard on Titanium and included in the SE Technology Package (201A) and includes service for 5 years from the vehicle sale date as recorded by the dealer. FordPass is available through a free download via the App Store® or Google Play,TM late availability Spring 2016. Message and data rates may apply. Service may be limited by mobile phone network coverage area. To learn more about where FordPass can take you, visit fordpass.com. ⁴SYNC AppLink is available on select models and compatible with select smartphone platforms. Commands may vary by phone and AppLink software. ⁵Optional Navigation System map updates cannot be received via Wi-Fi and require a separate update.





BOOST YOUR CURB APPEAL. Dress to impress with the new Sport Appearance Package, available on Escape SE and Titanium. Outside, gloss black-painted exterior accents complement 19" Ebony Black-painted aluminum wheels and front LED signature lamps for a look that's sure to get noticed. Interior highlights include partial leather-trimmed sport seats along with a leather-wrapped shift knob and steering wheel. Inside and out, its standout style will surely be appreciated.

KICK-START YOUR ADVENTURES. With up to 68.0 cu. ft. of cargo space with the rear seat folded, Escape is your perfect partner for spur-of-the-moment adventuring. And accessing that space is easy thanks to its hands-free foot-activated liftgate.¹ With your arms full and your Intelligent Access key¹ located in a pocket or purse, just kick your foot under the bumper and the liftgate automatically opens or closes. You can even program the fully opened height to the position that works best for you.



VENTURE OUT WITH CONFIDENCE.

NEW Adaptive Cruise Control

Helps maintain your choice of speed and preset gaps from the vehicle in front of you. It can also alert you to a potential collision. If one is detected, adaptive cruise control and collision warning with brake support¹ flashes a warning via a heads-up display on the windshield, sounds an alarm, and can pre-charge the brake system to provide full responsiveness when you do brake.

NEW Lane-Keeping System

Can detect lane markings and apply torque to the steering wheel if it senses your vehicle drifting unintentionally out of its lane. If needed, the Lane-Keeping System¹ can also send gentle vibration pulses to the wheel to prompt you to steer back toward center.² If it detects you've come too close to – or crossed – the markers multiple times, a Driver Alert System¹ displays a coffee cup icon to suggest taking a break from driving.

BLIS (Blind Spot Information System)

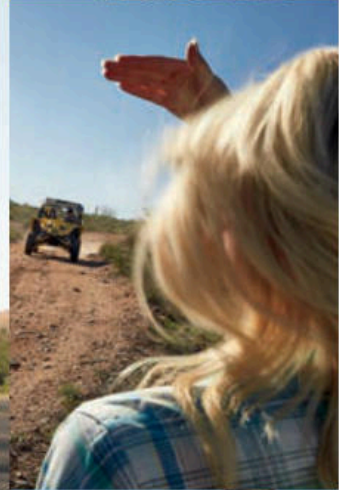
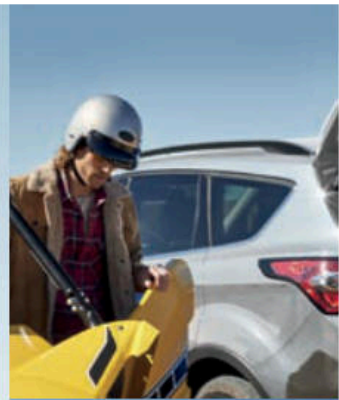
Alerts you with a light in either sideview mirror³ if its radar sensors detect a vehicle in the corresponding blind spot. Cross-traffic alert, part of the system, notifies you with a beep and a warning light in your sideview mirror if it detects a vehicle approaching either side as you slowly back Escape out of a parking space. Either way, BLIS[®] with cross-traffic alert¹ helps keep you aware of things that may be just out of your line of view.



DON'T LET PARKING SLOW YOU DOWN.

In an Escape Titanium equipped with the Technology Package, carefree parking is right up your alley. Or street. Or parking garage. Thanks to the ultrasonic sensors and other advanced features of its Enhanced Active Park Assist System,¹ parking reveals further talents of the new Escape. Whether looking for a perpendicular spot to back into or parallel parking, the system not only helps you find a suitable one, it steers the vehicle into place while you control the gear shifter, brake and accelerator pedals. The system also provides steering assistance when pulling out of a parallel parking space. So go ahead. Find your spot. You'll be parked and on your way in no time at all.



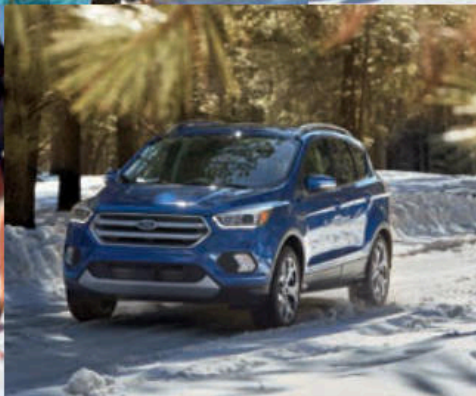
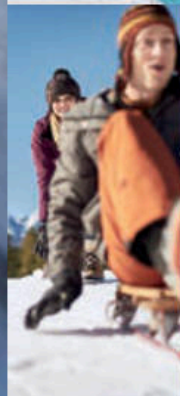
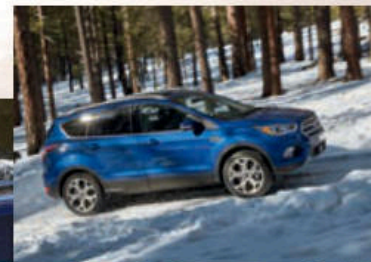


PURSUE YOUR PASSIONS. When you want to escape, getting to your destination is half the fun. When equipped with the 245-hp¹ 2.0L EcoBoost[®] engine² and Class II Trailer Tow Prep Package,³ Escape SE and Titanium models provide the power and capability to tow up to 3,500 lbs.⁴ of ATVs, dirt bikes, personal watercraft or whatever passions you pursue. And with trailer sway control^{2,5} monitoring vehicle motions to detect trailer sway, do it with confidence, too. To help you maintain control of both your Escape and the trailer, the system can reduce engine speed and selectively apply the brakes if needed. Just one more way Escape helps you handle what the day may bring.

ESCAPE WITH AUTHORITY.

With sure-footed standard FWD or the enhanced grip of Intelligent 4WD,¹ Escape instills confidence in various road and weather conditions. With Intelligent 4WD, the system assesses those conditions about 20 times faster than the blink of an eye, readjusting as needed to deliver the right balance of handling and traction. Whether challenges include snow-packed roads, loose gravel, or even a sudden downpour, this on-demand 4WD system can help you keep your adventures on track.

Maintain your peace of mind with standard features like 7 airbags, and AdvanceTrac[®] with RSC[®] (Roll Stability Control[™]).² Enhancing vehicle stability in a range of conditions, the system selectively applies individual brakes and modifies engine power to help keep all 4 wheels firmly planted.



WHEELS

S



17" Steel with Sparkle Silver-Painted Wheel Covers
Standard: S



17" Sparkle Silver-Painted Aluminum
Optional: S

SE



17" Sparkle Silver-Painted Aluminum
Standard: SE



18" Ultra Bright-Machined Aluminum
Available: SE



19" Ebony Black-Painted Aluminum
Included: SE Sport Appearance Package

TITANIUM



18" Sparkle Silver-Painted Aluminum
Standard: Titanium



19" Machined Aluminum with Luster Nickel-Painted Spokes and Pockets
Optional: Titanium



19" Ebony Black-Painted Aluminum
Included: Titanium Sport Appearance Package

STANDARD FEATURES

Mechanical

- 6-speed automatic transmission with SelectShift® capability
- Active Grille Shutters
- Brakes – Power disc with Anti-Lock Brake System (ABS)
- Electric-assist parking brake
- Front and rear stabilizer bars
- Front-wheel drive (FWD)
- Mini spare wheel and tire
- Steering – Electric power-assisted
- Suspension – 4-wheel independent
- Torque Vectoring Control

Driver-Assist Technology

Autolamp

Seating

- Front bucket seats
- 60/40 split-fold rear bench seat with recline

Interior

- Cargo tie-down hooks (4)
- Center console – Front-row with 2 cupholders, 2 media bins and armrest
- Display – Message center with trip computer
- Displays – Compass and outside temperature
- Flooring – Front and rear carpeted floor mats
- Grab handles – Front (2) and rear (2)
- Illuminated Entry System
- Lighting – Front and rear dome with front map and rear cargo area with theater-dimming
- Locks – Power door
- Overhead console with sunglasses holder
- Particulate air filter
- Power outlets – 12-volt powerpoints (4)

- Steering column – Manual-tilt/-telescoping
- Steering wheel-mounted cruise and audio controls

Exterior

- Easy Fuel® capless fuel filler
- LED taillamps
- Rear-window defroster
- Wipers – Front: variable-intermittent with washer; rear: 2-speed with washer

Safety & Security

- Airbags – Personal Safety System™ for driver and front passenger includes dual-stage front airbags,¹ safety belt pretensioners, safety belt energy-management retractors, safety belt usage sensors, driver's seat position sensor, crash severity sensor, restraint control module and Front-Passenger Sensing System
- Airbag – Driver's knee¹
- Airbags – Front-seat side¹
- Airbags – Safety Canopy® System with side-curtain airbags¹ and rollover sensor
- 3-point safety belt restraint system for all 5 seating positions
- Adjustable head restraints at all 5 seating positions
- AdvanceTrac® with RSC® (Roll Stability Control™) and Curve Control
- Battery saver
- Belt-Minder® front safety belt reminder
- Child-safety rear door locks
- Front height-adjustable shoulder safety belts
- LATCH – Lower Anchors and Tether Anchors for Children (rear outboard seating positions)
- MyKey®
- Rear view camera
- SecuriLock® Passive Anti-Theft System
- SOS Post-Crash Alert System™
- Tire Pressure Monitoring System (excludes spare)

ENGINES/EPA-ESTIMATED RATINGS²

2.5L iVCT I-4

- 168 hp @ 6,000 rpm
- 170 lb.-ft. of torque @ 4,500 rpm
- 6-speed automatic w/SelectShift capability
- FWD 21 city/29 hwy/24 combined mpg

1.5L EcoBoost® I-4

- 179 hp @ 6,000 rpm
- 177 lb.-ft. of torque @ 2,500 rpm
- 6-speed SelectShift automatic
- FWD 23 city/30 hwy/26 combined mpg
- 4WD 22 city/28 hwy/24 combined mpg

2.0L EcoBoost I-4

- 245 hp @ 5,500 rpm³
- 275 lb.-ft. of torque @ 3,000 rpm³
- 6-speed SelectShift automatic
- FWD 22 city/29 hwy/25 combined mpg
- 4WD 20 city/27 hwy/23 combined mpg

DIMENSIONS

Exterior

- Wheelbase 105.9" Length 178.1" Height 66.3"
- Width – Excluding mirrors 72.4"
- Width – Including mirrors 81.8"
- Width – Mirrors folded 75.0"
- Liftover height (curb) 28.0"

Interior (front/rear)

- Head room 39.9"/39.0"
- Leg room 43.1" (max.)/37.3"
- Hip room 54.5"/52.4"
- Shoulder room 55.9"/55.2"

Capacities (cu. ft.)

- Passenger volume 98.7
- Cargo volume behind front seats 68.0
- Cargo volume behind rear seats 34.0

Fuel Tank (gal.)

- FWD/4WD 15.7

¹Always wear your safety belt and secure children in the rear seat. ²Actual mileage will vary. ³Tested with 93-octane fuel.

TITANIUM		
S	SE	
S		Mechanical
		2.5L iVCT I-4 engine
	S	1.5L EcoBoost® I-4 engine with Auto Start-Stop Technology
	O	2.0L EcoBoost I-4 engine with Auto Start-Stop Technology
	O	Intelligent 4WD System
		Driver-Assist Technology
	O	Adaptive cruise control and collision warning with brake support
	P	BLIS® (Blind Spot Information System) with cross-traffic alert
	P	Reverse Sensing System
S	S	SYNC® Voice Recognition Communications and Entertainment System which includes 4.2" color LCD screen in center stack, 911 Assist®, AppLink™ and 1 smart-charging USB port
	P	SYNC 3 which includes 8" color LCD capacitive touchscreen in center stack with swiping capability, 911 Assist, AppLink, SYNC Connect and 2 smart-charging USB ports
		Seating
	S	Front – 6-way manual driver's seat and 4-way manual passenger seat
	S	Front – 10-way power driver's seat including power lumbar
	S	Front – 10-way power, heated bucket seats with driver's side memory feature
	S	Front – Driver's seat back map pocket
S	S	Front – Passenger seat back map pocket
	S	Rear – Center armrest
S		Trim – Cloth
	S	Trim – Unique cloth
	P	Trim – Leather-trimmed
	P	Trim – Partial leather
		Interior
S	S	AM/FM stereo/single-CD player with MP3 capability and 6 speakers
	S	Audio System from Sony® with 10 speakers and HD Radio™ Technology
	S	SiriusXM® Satellite Radio with 6-month trial subscription
	O	Voice-activated Navigation System¹ with pinch-to-zoom capability, and integrated SiriusXM Traffic and Travel Link® with 5-year subscription
	S	Ambient lighting
O	O	Cargo mat
S		Climate controls – Manual air conditioning
	S	Climate controls – Dual-zone electronic automatic temperature control
O	O	Flooring – Front and rear all-weather floor mats
	S	High-gloss Black finish on center stack and window switch bezels
	S	Ignition – Intelligent Access with push-button start
O	O	Ignition – Remote Start System

TITANIUM		
S	SE	
O	O	Interior cargo cover
	P	Leather-wrapped steering wheel and shift knob
	S	Mirror – Auto-dimming rearview
S	S	Mirror – Manual day/night rearview
	O	Panoramic Vista Roof®
	P	Power outlet – 110-volt converter
S	S	Remote Keyless Entry System with integrated keyhead transmitter remotes (2)
	S	Steering wheel-mounted transmission paddle shifters
	S	Universal garage door opener
S		Visors – Adjustable driver and front-passenger with covered vanity mirrors
	S	Visors – Adjustable driver and front-passenger with covered illuminated vanity mirrors
	S	Windows – Acoustic-laminate front-door glass
S	S	Windows – Power with one-touch-down driver's side feature
	P	Windows – Power with front and rear one-touch-up/-down feature
		Exterior
S		Door handles – Black molded-in-color
	S	Door handles – Body-color
	S	Exhaust tips – Dual bright
	S	Fog lamps
S		Grille – Black upper and lower
	S	Grille – Silver-painted upper with chrome bar and surround
	P	Headlamps – Bi-xenon high-intensity discharge (HID) with LED signature lighting
	P	Headlamps – Halogen projector-beam with LED signature bi-xenon lamps
S	S	Headlamps – Halogen reflector with courtesy delay
	S	Liftgate – Hands-free foot-activated
	O	Liftgate – Power¹
S		Mirrors – Black power sideview with manual fold-away design
	S	Mirrors – Body-color, power sideview with manual fold-away design
	S	Mirrors – Body-color, power sideview with turn signal indicators, security approach lamps and memory feature
	P	Mirrors – Heated sideview
S	S	Mirrors – Integrated blind spot in sideview
S	P	Moldings – Black beltline
	S	Moldings – Bright beltline
	S	Perimeter alarm
	P	Roof rack – Black side rails
	S	Roof rack – Silver-painted side rails
	O	Roof rack – Black crossbars¹
S	S	SecuriCode™ invisible keypad

TITANIUM		
S	SE	
	S	Silver skid plates
O	O	Splash guards
	P	O Tires – 235/45R19 all-season BSW¹
	O	S Tires – 235/50R18 all-season BSW¹
	S	Tires – 235/55R17 all-season BSW (2.0L 4WD only)
S	S	Tires – 235/55R17 low-rolling-resistance all-season BSW
O	O	O Wheel-locking lug nuts for aluminum wheels
	S	S Windows – Privacy glass (rear doors, rear quarter windows and liftgate window)
	P	S Windshield wiper de-icer
		Available Equipment Groups & Packages
	O	Equipment Group 201A – SE Technology Package includes SYNC 3 (8" color LCD capacitive touchscreen in center stack with swiping capability, 911 Assist, AppLink, SYNC Connect and 2 smart-charging USB ports), 9 speakers, power converter 110-volt outlet (replaces powerpoint at rear of center console), power windows with front and rear one-touch-up/-down feature, BLIS, halogen projector-beam headlamps with LED signature lamps, black roof rack side rails, and Reverse Sensing System
	O	Equipment Group 301A – Titanium Technology Package includes bi-xenon high-intensity discharge (HID) headlamps with LED signature lamps; auto high beams; Enhanced Active Park Assist System with parallel parking, park out assist, reverse perpendicular parking, and Forward and Side Sensing Systems; Lane-Keeping System; rain-sensing windshield wipers; heated steering wheel; and supplemental PTC heater
	O	Class II Trailer Tow Prep Package¹ includes trailer sway control (requires 2.0L EcoBoost engine; 3,500 lbs. max.)
	O	SE Cold Weather Package¹ includes heated front seats, heated sideview mirrors, front and rear all-weather floor mats, supplemental PTC heater, windshield wiper de-icer, and power converter 110-volt outlet (replaces powerpoint at rear of center console; n/a with SE Leather Comfort Package)
	O	SE Leather Comfort Package¹ includes leather-trimmed seats, heated front seats, 10-way power front-passenger seat, heated sideview mirrors, BLIS, and leather-wrapped steering wheel and shift knob (requires 201A; n/a with SE Cold Weather Package or SE Sport Appearance Package)
	O	SE Sport Appearance Package¹ includes 19" Ebony Black-painted aluminum wheels with 235/45R19 all-season BSW tires; black front fender grilles, roof rack side rails, beltline moldings, and headlamp and taillamp bezels; gloss black-painted sideview mirror caps, upper grille and skid plates; halogen projector-beam headlamps with LED signature lamps; partial leather-trimmed seats; and leather-wrapped steering wheel and shift knob (n/a with SE Leather Comfort Package)
	O	Titanium Sport Appearance Package¹ includes 19" Ebony Black-painted aluminum wheels with 235/45R19 all-season BSW tires; black front fender grilles, roof rack side rails, beltline moldings, and headlamp and taillamp bezels; gloss black-painted sideview mirror caps, upper grille and skid plates; and partial leather-trimmed seats (n/a with 301A)

¹Restrictions apply. See your dealer for details.

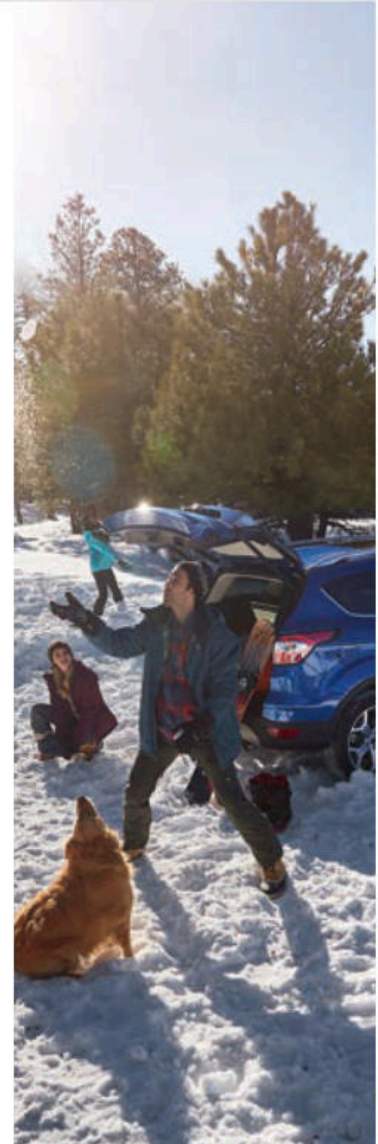
EXTERIOR & INTERIOR CHOICES

	S	SE	TITANIUM
White Platinum Metallic Tri-coat ¹		2 3 4 5 6	4 5 6
Oxford White	1	2 3 4 5 6	
Ingot Silver ²	1	2 3 4 5 6	4 5 6
White Gold ²	1	2 3 4 5 6	4 5 6
Canyon Ridge ²	1	2 3 4 5 6	4 5 6

	S	SE	TITANIUM
Ruby Red Metallic Tinted Clearcoat ¹		2 3 4 5 6	4 5 6
Lightning Blue ²	1	2 3 4 5 6	4 5 6
Magnetic ²	1	2 3 4 5 6	4 5 6
Shadow Black	1	2 3 4 5 6	4 5 6

4: Requires Sport Appearance Package

5,6: Requires Leather Comfort Package on SE



Colors are representative only. See your dealer for actual paint/trim options. ¹Additional charge. ²Metallic.



FORD ACCESSORIES

SE with Sport Appearance Package in Canyon Ridge accessorized with roof crossbars, rear spoiler winglets, smoked side window deflectors, molded splash guards, and roof-mounted bike carrier by THULE^{®1,2}

Exterior

- Full vehicle cover¹ (A)
- Hood protector¹
- Racks and carriers¹
- Rear spoiler winglets
- Roof crossbars
- Roof rails
- Side window deflectors
- Splash guards
- Sportz[®] tent¹
- Trailer towing accessories
- Wheel lock kit

Interior

- All-weather floor mats (B)
- Ash cup/coin holders
- Cargo organizers and protectors
- Carpeted floor mats
- Door sill plates
- First aid and roadside assistance kits¹
- Interior cargo cover and cargo area protector (C)
- Interior light kit
- Protective seat covers¹
- Tablet cradle¹

Electronics

- Keyless entry keypad
- Remote Access
- Remote start systems (D)
- Vehicle Security System
- Warning sensor systems¹



accessories.ford.com



New Vehicle Limited Warranty. We want your Ford Escape ownership experience to be the best it can be. Under this warranty, your new vehicle comes with 3-year/36,000-mile bumper-to-bumper coverage, 5-year/60,000-mile Powertrain Warranty coverage, 5-year/60,000-mile safety restraint coverage, and 5-year/unlimited-mile corrosion (perforation) coverage – all with no deductible. Please ask your Ford Dealer for a copy of this limited warranty.

Roadside Assistance. Covers your vehicle for 5 years or 60,000 miles, so you have the security of knowing that help may be only a phone call away should you run out of fuel, lock yourself out of the vehicle or need towing. Your Ford Dealer can provide complete details on all of these advantages.

Ford Credit. Get the ride you want. Whether you plan to lease or finance, you'll find the choices that are right for you at Ford Credit. Ask your Ford Dealer for details or check us out at fordcredit.com.

Ford Protect Extended Service Plans. Whether you purchase or lease your Ford vehicle, insist on genuine Ford Protect extended service plans. Ford Protect has a variety of plans to give you peace-of-mind protection whether you want vehicle component or maintenance coverage. Plus, they are fully backed by Ford and honored at all Ford dealerships in the U.S., Canada and Mexico. When you visit your dealer, insist on genuine Ford Protect extended service plans.

Insurance Services. Get Ford Motor Company quality in your auto insurance. Our program offers industry-leading benefits and competitive rates. Call 1-877-367-3847, or visit us at fordvip.com for a no-obligation quote. Insurance offered by American Road Services Company (in CA, American Road Insurance Agency), a licensed agency and subsidiary of Ford Motor Company.

Ford Original Accessories. They're warranted for whichever provides you the greatest benefit: 24 months/unlimited mileage, or the remainder of your Bumper-to-Bumper 3-year/36,000-mile New Vehicle Limited Warranty. Ford Licensed Accessories (FLA) are warranted by the accessory manufacturer's warranty. FLA are designed and developed by the accessory manufacturer and have not been designed or tested to Ford Motor Company engineering requirements. Contact your Ford Dealer for details and/or a copy of all limited warranties.

Google Play is a trademark of Google Inc. "HD Radio" and the HD Radio logo are proprietary trademarks of iBiquity Digital Corporation. iPhone and Siri are trademarks of Apple Inc., registered in the U.S. and other countries. App Store is a service mark of Apple Inc. PANDORA, the PANDORA logo, and the Pandora trade dress are trademarks or registered trademarks of Pandora Media, Inc. Used with permission. SiriusXM services require a trial subscription, sold separately by SiriusXM after trial period. Fees and taxes apply. All fees and programming subject to change. Sirius satellite service is available only to those in the 48 contiguous USA, D.C. and PR (with coverage limitations). Our Internet radio service is available throughout our satellite service area and in AK and HI. Some channels not available in all lineups. Sirius, XM and all related marks and logos are trademarks of Sirius XM Radio Inc. Sony is a registered trademark of the Sony Corporation. THULE is a registered trademark of Thule Sweden AB. Wi-Fi[®] is a registered trademark of the Wi-Fi Alliance.[®]

Comparisons based on competitive models (class is Small Utilities based on Ford segmentation), publicly available information and Ford certification data at time of release. Vehicles may be shown with optional equipment. Features may be offered only in combination with other options or subject to additional ordering requirements/limitations. Dimensions shown may vary due to optional features and/or production variability. Information is provided on an "as is" basis and could include technical, typographical or other errors. Ford makes no warranties, representations, or guarantees of any kind, express or implied, including but not limited to, accuracy, currency, or completeness, the operation of the information, materials, content, availability, and products. Ford reserves the right to change product specifications, pricing and equipment at any time without incurring obligations. Your Ford Dealer is the best source of the most up-to-date information on Ford vehicles.

¹Ford Licensed Accessory. ²Consult Owner's Manual for details on roof-rack load limits.