

2020  
**F-150**

XL | XLT | LARIAT | KING RANCH® | PLATINUM | LIMITED | RAPTOR



# BUILT TO GET IT DONE.

This workhorse takes your “to dos” and gets them “done.” Time after time after time. Hauling cinder block to another section of the job site. Done.

Loading the bed with mulch at the landscape supply company. Done.

Towing your 32’ boat to the lake for an extended holiday weekend. Oh so done.

Ford F-150 doesn’t back down from a challenge. Never has. Never will.

At Ford, we’ve accepted challenges for over 116 years and overcome them with courage, confidence and optimism. Before the interstate even existed, we imagined an America – and world – on wheels. Then we helped build it. Our resilience shows that we’re in it for the long haul. For the pride of a job well done. We build for the builders. And we build things our way.

BUILT *Ford* PROUD



AMERICA'S BEST **43 YEARS** FORD F-SERIES SELLING TRUCKS

**LARIAT SuperCrew® 4x4 in Iconic Silver with FX4 Off-Road and Chrome Packages, and available equipment.** (Max. Payload 2,050 lbs. and Max. Towing 12,500 lbs., when properly equipped with 5.5' box, 3.5L EcoBoost® engine, and Max. Trailer Tow Package with Pro Trailer Backup Assist™) Best-Selling Trucks for 43 years based on 1977-2019 CY total sales. <sup>1</sup>“More trucks on the road” based on IHS Markit Vehicles in Operation (VIO) data and latest odometer readings available to IHS Markit for 1992 and newer model-year full-size pickups still on the road in the U.S. as of 4/1/2019. <sup>2</sup>Class is Full-Size Pickups under 8,500 lbs. GVWR, based on Ford segmentation. <sup>3</sup>Max. horsepower and torque based on High-Output 3.5L EcoBoost engine using premium fuel per SAE J1349. Standard on LIMITED and RAPTOR (not shown). Your results may vary. <sup>4</sup>Max. payload of 3,270 lbs. on Regular Cab 8' box 4x2 with 5.0L engine and Heavy-Duty Payload Package (not shown). <sup>5</sup>Max. towing of 13,200 lbs. on SuperCrew 6.5' box 4x2 with 3.5L EcoBoost® engine and Max. Trailer Tow Package (not shown).

NOTE: Maximum payload and towing capabilities shown throughout this brochure are for properly equipped base vehicles with required equipment and a 150-lb. driver and vary based on cargo, vehicle configuration, accessories and number of passengers. See Payload and Towing charts in the Specifications section for maximum ratings by configuration. See label on door jamb for carrying capacity of a specific vehicle. Horsepower, torque, payload and towing are independent attributes and may not be achieved simultaneously. For additional information, see your Ford Dealer. Vehicles throughout this brochure may be shown with optional and aftermarket upfit equipment, and without standard antenna.

MORE F-SERIES TRUCKS ON THE ROAD WITH OVER  
**250,000 MILES**  
THAN ANY OTHER BRAND<sup>1</sup>

**6 ENGINES**  
TO CHOOSE FROM

CLASS-BEST<sup>2</sup> AVAILABLE  
**450 HORSE POWER<sup>3</sup>**

CLASS-BEST AVAILABLE  
**510 LB.-FT. TORQUE<sup>3</sup>**

CLASS-BEST  
**3,270 LBS.**  
MAX. AVAILABLE PAYLOAD<sup>4</sup>

**13,200 LBS.**  
MAX. AVAILABLE TOWING<sup>5</sup>

# BUILT FORD TOUGH.

BFT. The right way to spell tough. More than just a brutal testing regimen, Built Ford Tough® is a battle cry. One filled with honor, courage and the determination to never rest – until the job's done right. With well over 10 million customer-equivalent miles of testing, F-150 earned its Blue Oval. Being tortured in the lab. On the proving grounds. And working in the real world. Have no doubt, this truck is engineered for the long haul. Having repeatedly passed our toughest tests, it's more than ready for yours.

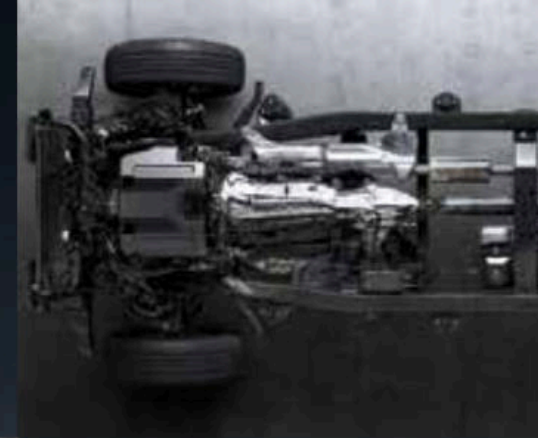
Climb into the cab of any F-150 – from the easy-to-clean vinyl seats of the XL work truck to the two-tone leather trim of LIMITED – and command a truck that embraces hard work as much as you do. F-150 is part of the legendary F-Series lineup that's been America's best-selling truck for 42 years. And with more trucks on the road with 250,000 miles than any other brand, there's nothing tougher than Ford F-Series.<sup>1</sup>



**XLT SuperCrew® 4x4 in Agate Black with FX4 Off-Road and Chrome Packages, and available equipment.** <sup>1</sup>More trucks on the road™ based on IHS Markit Vehicles in Operation (VIO) data and latest odometer readings available to IHS Markit for 1992 and newer model-year full-size pickups still on the road in the U.S. as of 4/1/2019. <sup>2</sup>6000-series aluminum alloy.

Try to avoid water higher than the bottom of the hubs and proceed slowly. Refer to your owner's manual for detailed information regarding driving through water.

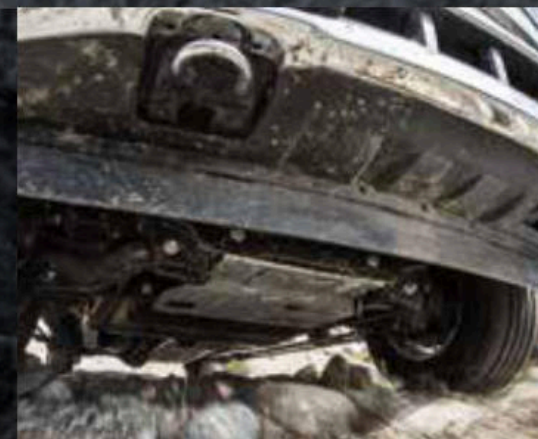
**THE RUGGED F-150 FRAME** is a fully boxed, modular foundation with 8 muscular crossmembers and large, cross-section frame rails. Comprised of 78% high-strength steel, the F-150 frame is immersed in an e-coat solution while an electric charge is applied. This forms a durable protective shell that bonds with the steel to help inhibit rust, even in hidden areas.



## GREAT STRENGTH. DOESN'T RUST.

The high-strength, military-grade, aluminum alloy<sup>2</sup> of the F-150 body and cargo box is hardened through heat treating to produce great strength. Gauge is thickest where needed to provide extra strength. Plus, the body and cargo box don't rust and resist corrosion. That's leadership that counts. For years down the road.

**FX4 OFF-ROAD.** Those words on your pickup box let everyone know your F-150 is capable of serious, off-road travel. The FX4 Off-Road Package equips your truck to get out there with off-road-tuned front shock absorbers, underbody skid plates that help protect the front differential, transfer case and fuel tank, Hill Descent Control,<sup>™</sup> and an electronic-locking rear differential. Monitor the action from the driver's seat on the available off-road display in the productivity screen.



**A MASTERFUL MIX** of high-strength, military-grade aluminum alloys<sup>2</sup> works with the high-strength-steel frame structure to help manage crash/crush energy into the F-150 passenger compartment in certain front, side and rear impacts, as well as during the small overlap front test. A patented 12-sided design in the front frame horn improves front-impact protection by helping to dissipate crash energy.



## A NEW TAKE ON TOUGH. X3.

New 2020 Appearance Packages provide some additional visual swagger to the incredibly versatile F-150 lineup. Add Black 20" wheels – and more – to STX with the new STX Sport Special Edition Package. On XLT and LARIAT, new Black Appearance Packages bring some attitude, starting up front with a Black Ford Oval. Pick your favorite. Then get out there.

LARIAT SuperCrew® 4x4 in Velocity Blue with Black Appearance Package. XLT SuperCrew 4x4 in Magnetic with Black Appearance Package. XL SuperCab 4x4 in Iconic Silver with STX Sport Special Edition Package. All shown with available equipment.

### LARIAT BLACK APPEARANCE PACKAGE

High-gloss Ebony mesh grille insert with Black Ford Oval • Dark headlamp housings • 20" Low-Gloss Black-painted wheels • Black fender badges  
• Black cab steps • Black F-150 decals on tailgate  
• Requires Sport Package

### XLT BLACK APPEARANCE PACKAGE

High-gloss Ebony mesh grille insert with Black Ford Oval • Dark headlamp housings • 20" Low-Gloss Black-painted wheels • Black fender badges  
• Black cab steps • Black F-150 decals on tailgate  
• Requires Sport Package

### STX SPORT SPECIAL EDITION PACKAGE

Unique bodyside decals • 20" Low-Gloss Black-painted wheels • Chrome exhaust tip  
• Requires STX Package

# PACK QUITE A PUNCH.

Multiple ways. With 6 different engines, Ford F-150 provides a range of powerful choices to help you find the one that best fits your needs. Diesel power? Got it. High-output performance? Note the 2 best-in-class numbers below. V8 brawn? 5.0L of displacement covers it. Every engine save one is paired with our available 10-speed automatic transmission with SelectShift® capability. With optimized gear spacing, including 3 overdrive gears, the 10-speed gearbox helps maximize shift points and gear ratios to optimize power, low-rpm torque and functional efficiency. Just scan the chart at right for proof.



CLASS-BEST AVAILABLE  
**450** HORSE POWER<sup>4</sup>  
 CLASS-BEST AVAILABLE  
**510** LB.-FT. TORQUE<sup>4</sup>

**LIMITED SuperCrew® 4x2 in Iconic Silver with available equipment.** <sup>1</sup>EPA-estimated ratings for LARIAT, KING RANCH and PLATINUM 4x4 of 20 city/25 hwy/22 combined mpg. Actual mileage will vary. <sup>2</sup>EPA-estimated ratings for RAPTOR 4x4 of 15 city/18 hwy/16 combined mpg. Actual mileage will vary. <sup>3</sup>Purchasing an F-150 upfit may help you qualify for state incentives related to alternative fuel use, infrastructure or vehicles. Visit [afdc.energy.gov/afdc/laws](http://afdc.energy.gov/afdc/laws) for details. <sup>4</sup>Max. horsepower and torque based on High-Output 3.5L EcoBoost engine on LIMITED and RAPTOR (not shown). Horsepower and torque ratings based on premium fuel per SAE J1349<sup>®</sup> standard. Your results may vary. <sup>5</sup>Actual mileage will vary.

Horsepower, torque and EPA-estimated fuel economy ratings are independent attributes and may not be achieved simultaneously.

EPA-ESTIMATED RATINGS: CITY/HWY/COMBINED MPG (4x4)<sup>5</sup>

EPA-ESTIMATED RATINGS: CITY/HWY/COMBINED MPG (4x2)<sup>5</sup>

MAX. TORQUE (LB.-FT.)

MAX. HORSEPOWER

### 3.0L POWER STROKE® TURBO DIESEL

The first-ever diesel engine on F-150 is paired with the 10-speed automatic for strong torque delivery throughout the rpm range, exactly what's needed for those who tow frequently. "You'd be hard pressed to find an engine better suited for everyday-pickup duty. With all 440 lb.-ft. of torque on tap at a low 1,750 rpm, it moves the truck out from a stop without a hint of strain," says *Car and Driver*.

Available on XL (Fleet only), XLT, LARIAT,<sup>2</sup> KING RANCH,<sup>2</sup> PLATINUM<sup>1</sup>

### 3.5L HIGH-OUTPUT ECOBOOST®

Performance enhancements over the conventional 3.5L EcoBoost include increased boost calibrations, full dual exhaust, oil-cooled pistons, and more aggressive engine control calibrations. The 10-speed automatic transmission with SelectShift capability really optimizes the power and torque curves of this high-output powerhouse.

Standard on LIMITED, RAPTOR<sup>2</sup>

### 3.5L ECOBOOST

Delivers exceptional horsepower and torque. With torque readily available across the speed range for exceptional low-end and peak performance. Exactly what's needed for hauling heavy loads and towing heavy trailers.

Available on XL, XLT, LARIAT, KING RANCH, PLATINUM

### 5.0L TI-VCT V8

32 valves. Twin independent variable cam timing. Dual-injection system. 12:1 compression ratio. They all help make the trusted V8 an exceptional choice for all-around F-150 capability. A class-exclusive CNG/Propane Gaseous Engine Prep Package<sup>3</sup> is available.

Available on XL, XLT, LARIAT, KING RANCH, PLATINUM

### 2.7L ECOBOOST

To understand an engine's specific output, divide its horsepower by its displacement. At a staggering 120 hp/L, the 2.7L EcoBoost unleashes power like few others of its size. Strength comes from compacted graphite iron (CGI) that forms the upper engine block and cylinders.

Available on XL, XLT, LARIAT

### 3.3L TI-VCT V6

The standard F-150 powerplant delivers where it matters most: towing capability, payload capacity and functional efficiency. Paired with a 6-speed automatic transmission with SelectShift capability.

Available on XL, XLT



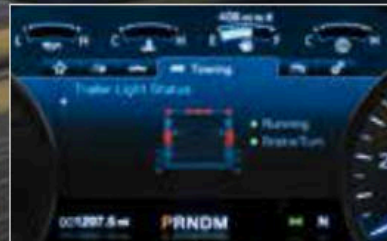
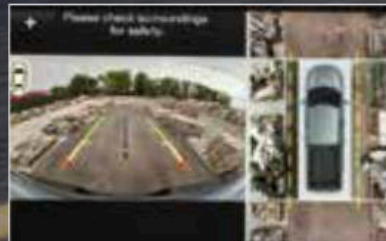
## PULL QUITE A LOAD.

With the high-strength-steel frame, torque-heavy available 3.5L EcoBoost® engine, and smart towing technology of the 2020 Ford F-150, you are ready with a max. available towing capacity of 13,200 lbs.<sup>1</sup> To help further enhance towing confidence, combine standard Trailer Sway Control with available features such as: a Smart Trailer Tow Connector, an integrated trailer brake controller,<sup>2</sup> and class-exclusive PowerScope® power-telescoping/-folding trailer tow mirrors. Check the available 8" productivity screen in the instrument cluster for system alerts (shown below). After you're moving, maintain a consistent speed on steep grades by locking out upper gears using the progressive range select feature on both SelectShift® automatic transmissions. They also feature tow/haul mode, for use when F-150 is heavily loaded or when towing.

**LARIAT SuperCrew® 4x4 in Blue Jeans with Chrome Package, and Max. Trailer Tow Package with Pro Trailer Backup Assist.** Shown with available and aftermarket equipment. (Max. Towing 12,500 lbs. when properly equipped with 5.5' box, 3.5L EcoBoost engine and Max. Trailer Tow Package with Pro Trailer Backup Assist.) <sup>1</sup>SuperCrew 6.5' box 4x2 with 3.5L EcoBoost engine and Max. Trailer Tow Package (not shown). Max. towing varies based on cargo, vehicle configuration, accessories and number of passengers. See Payload and Towing charts in the Specifications section for maximum ratings by configuration. <sup>2</sup>Trailer brake controller verified to be compatible with electrically actuated drum brakes and certain electric-over-hydraulic brake systems. See your Ford Dealer for details. <sup>3</sup>Driver-assist features are supplemental and do not replace the driver's attention, judgment and need to control the vehicle. <sup>4</sup>Please consult your owner's manual or Pro Trailer Backup Assist Measurement Card for information on setting up your trailer.



**13,200 LBS.**  
MAX. AVAILABLE  
TOWING<sup>1</sup>



### A STANDARD REAR VIEW CAMERA

allows viewing of trailer direction and determination of trailer placement. Dynamic Hitch Assist<sup>3</sup> guidelines help you line up truck and trailer. Further assistance is provided by our available 360-Degree Camera with Split-View Display<sup>3</sup> that works at low speeds in Forward and Reverse. Four cameras let you see the sides of F-150 on the available 8" color screen in the center stack.

### CLASS-EXCLUSIVE AVAILABLE PRO TRAILER BACKUP ASSIST™<sup>3</sup>

(PTBA) helps make it easy to back up your trailer. Once the system is programmed,<sup>4</sup> simply rotate the PTBA knob left or right depending on the direction you want the trailer to go. The system then automatically steers the truck to turn the trailer the desired amount. PTBA can help you back up your trailer like a pro.



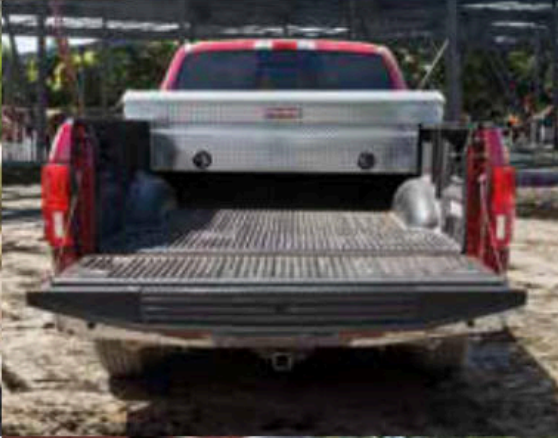
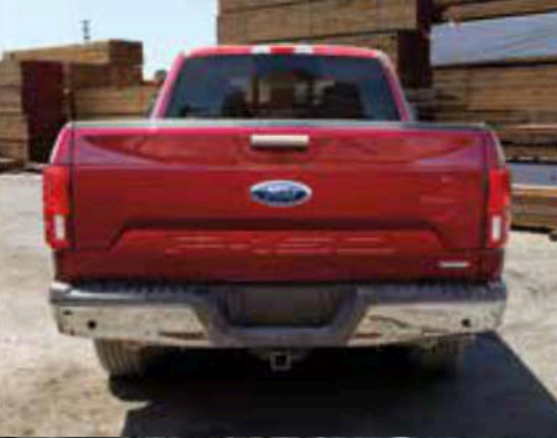


**CLASS-BEST  
3,270 LBS.  
MAX. AVAILABLE  
PAYLOAD<sup>1</sup>**

## HAUL MORE THAN ANYONE.

In this weight class, F-150 takes Gold, Silver and Bronze. When equipped with the available 5.0L V8 engine and Heavy-Duty Payload Package, F-150 leads all competitors with a 3,270-lb. max. payload.<sup>1</sup> Also on the podium? A similarly equipped F-150 with the available 3.5L EcoBoost<sup>®</sup> at 3,230 lbs. max. payload,<sup>2</sup> as well as an F-150 equipped with the available 2.7L EcoBoost and Payload Package at 2,470 lbs.<sup>3</sup> With 3 box lengths (5.5' to 8'), access is easy with steps available on all 3 sides, including available deployable box side steps for all lengths.

**LARIAT SuperCrew<sup>®</sup> 4x2 with 6.5' box and available equipment.** (Max. payload 2,270 lbs. when properly equipped with 3.5L EcoBoost engine.) <sup>1</sup>Max. payload of 3,270 lbs. on Regular Cab 8' box 4x2 with 5.0L engine and Heavy-Duty Payload Package (not shown). <sup>2</sup>Max. payload of 3,230 lbs. on Regular Cab 8' box 4x2 with 3.5L EcoBoost engine and Heavy-Duty Payload Package (not shown). <sup>3</sup>Max. payload of 2,470 lbs. on Regular Cab 8' box 4x2 with 2.7L EcoBoost engine and Heavy-Duty Payload Package (not shown). <sup>4</sup>Ford Licensed Accessory.



STANDARD LOCKABLE  
TAILGATE

AVAILABLE  
INDUSTRY-FIRST REMOTE  
TAILGATE RELEASE

AVAILABLE  
LED CARGO BOX  
LIGHTING

AVAILABLE  
STOWABLE BED  
EXTENDER

AVAILABLE BOXLINK<sup>™</sup>  
REMOVABLE AND LOCKABLE  
TIE-DOWN CLEATS (4)

AVAILABLE ALUMINUM  
CROSSED TOOLBOX  
BY WEATHER GUARD<sup>®4</sup>

AVAILABLE TAILGATE STEP  
WITH GRAB BAR

AVAILABLE  
CLASS-EXCLUSIVE  
STOWABLE LOADING RAMPS

## FORD CO-PILOT360™ TECHNOLOGY READY WITH AN ASSIST.

From the work site to the highway, our standard and available driver-assist features<sup>1</sup> are designed to help you feel confidently in command at the wheel of your F-150.

### FORD CO-PILOT360



#### PRE-COLLISION ASSIST WITH AUTOMATIC EMERGENCY BRAKING

We should all drive defensively. By scanning the road ahead, this feature can alert you to potential collisions with vehicles or pedestrians detected in your path. If an impact is imminent and you don't take action, brakes can apply automatically.<sup>2</sup> It's designed to only activate when needed.

Standard on ALL TRIMS



#### BLIS® WITH TRAILER COVERAGE AND CROSS-TRAFFIC ALERT

Changing lanes demands your full attention. BLIS (Blind Spot Information System) can help by not only alerting you to vehicles detected in your blind spots,<sup>3</sup> but also alerting you when vehicles are detected alongside your trailer. Cross-Traffic Alert helps by detecting and alerting you to traffic behind your truck as you're slowly backing up.

Standard on LARIAT, KING RANCH,<sup>9</sup> PLATINUM, LIMITED;  
Available on XLT, RAPTOR



#### LANE-KEEPING SYSTEM

It happens. You wander too close to your lane's edge. Our Lane-Keeping System<sup>4</sup> can help during a moment of distraction. If you drift out of your lane, it directs you with steering wheel torque to return, and can also alert you through vibration pulses. Stray a few times and a coffee cup icon lets you know it's time for a break.

Standard on LARIAT, KING RANCH, PLATINUM, LIMITED;  
Available on RAPTOR



#### AUTO HIGH-BEAM HEADLAMPS

Sound familiar? You turn on high beams entering a dark stretch of road – then forget to turn them off as traffic approaches. Auto High-Beam Headlamps can detect poor lighting and switch them on for you. They can also sense oncoming headlamps and dim automatically for other drivers.

Standard on ALL TRIMS



#### REAR VIEW CAMERA

Backing up requires a little multitasking. Our Rear View Camera helps by providing a great view of what's behind your truck, helping you navigate Reverse with more confidence. It also helps when you're lining up a trailer.

Standard on ALL TRIMS



#### ADAPTIVE CRUISE CONTROL (ACC) WITH STOP-AND-GO

There are few things as tedious as bumper-to-bumper traffic. ACC with Stop-and-Go can help you keep pace on your journey, slowing down or even stopping your vehicle if the traffic ahead has slowed or stopped. When things clear, it can resume your set speed.<sup>5</sup>

Standard on LIMITED; Available on LARIAT, KING RANCH, PLATINUM, RAPTOR



#### CURVE CONTROL

Sometimes it's hard to judge the severity of an unfamiliar curve. So it's good to know that Curve Control can actually sense when you're taking a turn too fast – and can slow your truck's speed as much as 10 mph in about a second to help you maintain control.

Standard on ALL TRIMS



#### ACTIVE PARK ASSIST

No need to dread parallel parking. Active Park Assist not only helps you find a spot, it steers F-150 into it. You control the gear shifter, brake and accelerator pedals.

Standard on LIMITED; Available on LARIAT, KING RANCH, PLATINUM



#### TRAILER SWAY CONTROL

This helpful technology monitors the motions of F-150 when towing to detect trailer sway. If it's detected, the system selectively applies brakes as needed to help you maintain control of the truck as well as the trailer.<sup>6</sup>

Standard on ALL TRIMS



#### 360-DEGREE CAMERA

True to its name, the 360-Degree Camera with Split-View Display lets you see around Ford F-150 from every side. Very helpful while centering your truck in a parking spot, driving around a crowded work site or while navigating a tight section of off-road trail.

Standard on LIMITED; Available on LARIAT, KING RANCH, PLATINUM, RAPTOR



**KING RANCH SuperCrew® 4x4 in Oxford White/Stone Gray two-tone with 3.0L Power Stroke® Diesel, Chrome Package and available equipment.** <sup>1</sup>Driver-assist features are supplemental and do not replace the driver's attention, judgment and need to control the vehicle. <sup>2</sup>Pre-Collision Assist with Automatic Emergency Braking can detect pedestrians, but not in all conditions and does not replace safe driving. See owner's manual for system limitations. <sup>3</sup>BLIS replaces standard integrated blind spot mirrors. <sup>4</sup>Lane-Keeping System does not control steering. <sup>5</sup>If stop is longer than 3 seconds, driver must intervene and press "RES" button or accelerator pedal to resume system operation. <sup>6</sup>Remember that even advanced technology cannot overcome the laws of physics. It's always possible to lose control of a vehicle due to inappropriate driver input for the conditions.



**MAKE THIS CABIN YOUR OWN.** With 7 distinct trim levels, you're sure to find an F-150 interior that's just right for you. They all share some hardworking basics. Like ergonomically optimized front seating that enhances comfort, whether you're heading across town or hitting the open road for a cross-country journey. Plenty of storage space in the enormous available center console, and in storage pockets throughout the cabin. A Rear View Camera with Dynamic Hitch Assist that aids in backing up and hooking up your trailer. What you add from there is up to you. An available power-sliding rear window for natural ventilation? An available twin-panel moonroof on SuperCrew® models to flood the cabin with light? Enjoy available multicontour seats with Active Motion® massage. An available heated, leather-wrapped steering wheel. And, most importantly, the incomparable feeling of being in complete command of your surroundings.

**LIMITED SuperCrew 4x4 with Camelback two-tone Regency leather front and rear seats and available equipment.**

**8"**

**PRODUCTIVITY SCREEN  
IN GAUGE CLUSTER**

The available productivity screen lets you track vital F-150 vehicle information right here, including: individual pressure in each tire, settings for the available trailer brake controller, trailer connection status and profiles of up to 10 different trailers.

**LCD CAPACITIVE  
TOUCHSCREEN WITH  
PINCH-TO-ZOOM**

This available center stack 8" touchscreen allows smartphone users to view the Waze™ app's navigation and traffic features, thanks to SYNC® AppLink®.

AVAILABLE  
**110V  
400W**  
AC POWER  
OUTLETS



**REAP THE REWARDS.** You always do your best, not stopping until the job's done right. Enjoy the rewards of your hard work in the 2020 Ford F-150 cabin. In fact, the SuperCrew® cabin of KING RANCH® is an energizing place to spend time, whether you're seated in front or in the rear. Kingsville KING RANCH leather covers the heated and ventilated front seats, rear seats, and flow-through center console lid. A B&O Sound System supplies the tunes, while the front and rear seat backs, carpeted floor mats, center console lid and even the wheels are branded with the legendary "Running W" KING RANCH logo. Whether you're carrying people or cargo, you've got the room you need.

KING RANCH SuperCrew 4x4 with Kingsville KING RANCH leather front and rear seats and available equipment.

AVAILABLE TWIN-PANEL MOONROOF  
.....  
AVAILABLE HEATED REAR  
OUTBOARD SEATS  
.....  
AVAILABLE FIRST-IN-CLASS  
INFLATABLE REAR OUTBOARD  
SAFETY BELTS

UP TO  
**43.6"**  
REAR SEAT  
LEG ROOM  
.....  
SUPERCREW

**10**

HIGH-PERFORMANCE SPEAKERS transform 750 watts of digitally processed sound from the available B&O Sound System, filling the cabin with the sounds you want to hear.



## YOUR TECH, YOUR WAY.

With seating for up to 6 and Wi-Fi hotspot capability, Ford F-150 welcomes a vast array of smartphones, tablets, gaming systems and computers along for the ride. Plus, you can tap into the best in music, sports, comedy, news and talk with available SiriusXM® inside your vehicle and on the go, with a 6-month All Access trial subscription.<sup>1</sup> With our available Voice-Activated Touchscreen Navigation System, you'll also enjoy a 5-year subscription<sup>1</sup> to SiriusXM Traffic and Travel Link® services.

### COMMAND IT

With your voice and your choice of display. Available SYNC® 3 voice-activated technology<sup>2</sup> connects your tech with your F-150. Available SYNC 3 AppLink®<sup>3</sup> (shown) gives you voice control of compatible mobile apps like Waze™ and Ford+Alexa.<sup>4</sup> To see your phone's familiar interface on the big screen, take advantage of compatibility with Apple CarPlay<sup>5</sup> for your iPhone®, or Android Auto™<sup>6</sup> for your Android™ smartphone.



androidauto

### CONTROL IT

Monitor and control your vehicle in incredibly powerful ways using the FordPass™ App alone or with FordPass Alexa Skill<sup>6</sup> or FordPass Action through Google Assistant™ when equipped with FordPass Connect™.<sup>7</sup> Complimentary remote features let you start, lock and unlock your vehicle from just about anywhere, including right from your wrist with your Apple Watch.<sup>8</sup> Use your app to find your vehicle, schedule starts, find parking,<sup>9</sup> and check fuel and fluid levels. When you need important vehicle information, like Vehicle Health Alerts, service history and Warranty info, the FordPass App puts it at your fingertips. And, when it's time to bring your vehicle in for service, the app makes scheduling easy. Enjoy access to convenient services like Key by Amazon In-Car Delivery<sup>9</sup> and peace of mind knowing roadside assistance is just a call or e-request away.<sup>10</sup>



### CONNECT IT

With in-vehicle Wi-Fi. Before the mud dries on your boots, you and your friends can be posting dirt bike videos through FordPass Connect<sup>7</sup> with 4G LTE Wi-Fi hotspot capability. Its powerful antenna provides the ability to connect up to 10 devices at once<sup>11</sup> - inside of F-150 and up to 50' away.

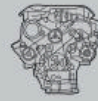


SYNC® AppLink®

**Available equipment shown.** <sup>1</sup>All SiriusXM services require a subscription, sold separately by SiriusXM after the trial period. Fees and taxes apply. See SiriusXM Customer Agreement for complete terms at [www.siriusxm.com](http://www.siriusxm.com). All fees, content and features are subject to change. Traffic information not available in all markets. SiriusXM satellite service for 2020 model-year Ford vehicles is not available in Puerto Rico; SiriusXM streaming service is available for purchase. <sup>2</sup>Don't drive while distracted. Use voice-operated systems when possible; don't use handheld devices while driving. Some features may be locked out while the vehicle is in gear. Not all features are compatible with all phones. <sup>3</sup>Commands may vary by phone and AppLink software. <sup>4</sup>Waze is available via iPhone with SYNC 3 and on Android Auto. Commands may vary by phone and AppLink software. Alexa requires available SYNC 3 AppLink. Certain Alexa functionality is dependent on smart phone and home technology. Don't drive while distracted or while using handheld devices. Use voice controls. Some features may be locked out while the vehicle is in gear. <sup>5</sup>Requires device with active data service and compatible software. SYNC does not control 3rd-party products while in use. 3rd parties are solely responsible for their respective functionality. <sup>6</sup>Don't drive while distracted or while using handheld devices. Use voice controls. Certain Alexa functionality is dependent on smart phone and home technology. <sup>7</sup>At purchase, the FordPass Connect modem is connected and sending vehicle data (e.g., diagnostics) to Ford. To disable, or for more information, see in-vehicle connectivity settings. Learn more at [www.FordConnected.com](http://www.FordConnected.com). FordPass Connect (optional on select vehicles), the FordPass App, and complimentary Connected Service are required for remote features (see FordPass Terms for details). Connected service and features depend on compatible AT&T network availability. Evolving technology/cellular networks/vehicle capability may limit functionality and prevent operation of connected features. Connected service excludes Wi-Fi hotspot. <sup>8</sup>In select cities. <sup>9</sup>FordPass App, compatible with select smartphone platforms, is available via a download. FordPass Connect service required (see FordPass Terms for more information). Message and data rates may apply. Check your availability at <https://amzn.to/2JnYmtz>. <sup>10</sup>Roadside assistance is included for certain owners and available to everyone for a per-service fee. <sup>11</sup>Don't drive while distracted or while using handheld devices. Use voice controls.

4x2 | Standard

4x4 | Available



**3.3L TI-VCT V6 FFV**

Standard: Regular Cab,  
SuperCab 6.5' Box,  
SuperCrew® 5.5' Box

**2.7L ECOBOOST® V6**

Standard: SuperCab 8' Box 4x2,  
SuperCrew 6.5' Box 4x2  
Available: Regular Cab,  
SuperCab 6.5' Box,  
SuperCrew 5.5' Box

**5.0L TI-VCT V8 FFV**

Standard: SuperCab 8' Box 4x4,  
SuperCrew 6.5' Box 4x4  
Available: Regular Cab,  
SuperCab, SuperCrew

**3.5L ECOBOOST V6**

Available: Regular Cab 8' Box,  
SuperCab, SuperCrew

**3.0L POWER STROKE® V6  
TURBO DIESEL**

Available (Fleet only):  
SuperCab 6.5' Box,  
SuperCrew



**REGULAR CAB**  
6.5' Box | 8' Box

**SUPERCAB**  
6.5' Box | 8' Box

**SUPERCREW**  
5.5' Box | 6.5' Box



**40/20/40  
SPLIT FRONT BENCH SEAT**  
Standard

**FRONT BUCKET SEATS  
WITH CENTER CONSOLE**  
Available



**THE BEDROCK OF THE F-150 LINEUP**

Black grille and bumpers. Black vinyl flooring. F-150 XL is a no-nonsense work truck. With all the capability and standard features to get you comfortably through any work week. To take it up a notch, the STX Package adds a monochromatic exterior, black mesh grille with body-color surround, fog lamps, STX cargo box decals and 20" machined aluminum wheels. Inside, there's Sport Black cloth-trimmed seating (shown). For complete contents of all XL Packages, turn the page.



Instrument panel.  
Available equipment.

SuperCab 4x4.  
Magnetic. STX Package.  
Available equipment.

STX Package interior.  
Sport Black cloth seating.  
Available equipment.

Regular Cab 4x4.  
Oxford White.  
Available equipment.

PRE-COLLISION ASSIST WITH AUTOMATIC EMERGENCY BRAKING

REAR VIEW CAMERA WITH DYNAMIC HITCH ASSIST

ELECTRONIC SHIFT-ON-THE-FLY (ESOF) TRANSFER CASE (4X4)

AUTOLAMP AUTOMATIC HEADLAMPS WITH AUTO HIGH BEAMS

**XL**



XL (EQUIPMENT GROUP 100A)  
STANDARD FEATURES:

**MECHANICAL**

- 4-pin trailer tow wiring with ball-mounting provisions in rear bumper
- 4-wheel vented disc brakes with Anti-Lock Brake System (ABS) and electronic brakeforce distribution (EBD)
- 23-gallon fuel tank (Regular Cab/SuperCab)
- 26-gallon fuel tank (SuperCrew<sup>®</sup>)
- 100,000-mile tune-up interval (under normal driving conditions with routine fluid and filter changes)
- Active Grille Shutters
- Auto Start-Stop Technology
- Easy Fuel<sup>®</sup> capless fuel filler
- Electric power-assisted steering with Normal, Comfort and Sport modes
- Electronic parking brake
- Electronic shift-on-the-fly (ESOF) transfer case with neutral towing capability (4x4)
- Fail-Safe Engine Cooling System
- Gas-pressurized twin-tube front and staggered, outboard-mounted rear shock absorbers
- Jack
- Long-spindle, double-wishbone, coil-over-shock, independent front suspension
- Rear axle – 3.15 non-limited-slip (4x2 with 5.0L and 3.5L EcoBoost<sup>®</sup> engines)
- Rear axle – 3.31 non-limited-slip<sup>1</sup> (3.0L diesel, and 4x4 with 5.0L and 3.5L EcoBoost engines)
- Rear axle – 3.55 non-limited-slip<sup>1</sup> (3.3L and 2.7L EcoBoost engines)
- Rear axle – 3.73 non-limited-slip<sup>1</sup> (3.3L engine)
- Spare wheel and tire with lock and rear underframe carrier
- Tires – 245/70R17 BSW all-season (4x2)
- Tires – 265/70R17 OWL all-terrain (4x4)
- Transmission – 6-speed SelectShift<sup>®</sup> automatic with Progressive Range Select and 3 Selectable Drive Modes (3.3L engine)
- Transmission – 10-speed SelectShift automatic with Progressive Range Select and 5 Selectable Drive Modes (5.0L, 3.0L diesel, and 2.7L and 3.5L EcoBoost engines)

**FORD CO-PILOT360™ TECHNOLOGY**

- Autolamp Automatic On/Off Headlamps with Auto High Beams and Rainlamp
- Curve Control
- Hill Start Assist
- Pre-Collision Assist with Automatic Emergency Braking (AEB)
- Rear View Camera with Dynamic Hitch Assist
- SOS Post-Crash Alert System™
- Trailer Sway Control

**SEATING**

- Cloth-trimmed seats
- 40/20/40 split front seat bench with folding armrest and storage
- 2-way manual driver and right-front-passenger seats
- 60/40 split one-touch flip-up rear seat (SuperCab/SuperCrew)

**INTERIOR**

- 2.3" productivity screen in instrument cluster
- 4.2" screen in center stack
- 12V powerpoint
- Air conditioning
- Black vinyl flooring
- Driver and front-passenger grab handles, and rear-passenger on SuperCrew
- Driver and front-passenger sun visors
- Fixed rear window with solar-tinted glass
- Gauges for fuel, oil pressure, transmission and engine coolant temperature; tachometer; speedometer; and odometer
- LED front dome/map lights
- Manual-tilt/-telescoping steering column
- Outside temperature display
- Steering column-mounted shifter

**CONNECTIVITY & ENTERTAINMENT**

- AM/FM stereo (includes 4 speakers on Regular Cab; 6 speakers on SuperCab/SuperCrew)
- Connectivity device<sup>2</sup>

**EXTERIOR**

- Black front tow hooks (4x4)
- Black grille, bumpers, door and tailgate handles, and sideview mirror caps
- Center high-mounted stop lamp (CHMSL) with cargo lamp
- Configurable daytime running lamps
- Halogen headlamps
- Mirrors – Manual-folding sideview with manual glass
- Pickup box rail and tailgate moldings
- Pickup box tie-down hooks (4)
- Removable tailgate with key lock
- Variable-intermittent windshield wipers with washers

**SAFETY & SECURITY**

- Personal Safety System™ for driver and right-front passenger includes dual-stage front airbags,<sup>3</sup> safety belt pretensioners, safety belt energy-management retractors, safety belt usage sensors, driver's seat position sensor, crash severity sensor, restraint control module and Front-Passenger Sensing System
- AdvanceTrac<sup>®</sup> with RSC<sup>®</sup> (Roll Stability Control™)
- Front-seat side airbags<sup>3</sup> and Safety Canopy<sup>®</sup> System with side-curtain airbags<sup>3</sup> and rollover sensor
- Individual Tire Pressure Monitoring System (TPMS; excludes spare)
- SecuriLock<sup>®</sup> Passive Anti-Theft System

**AVAILABLE FEATURES AND PACKAGES:**

**MECHANICAL**

- 36-gallon extended-range fuel tank<sup>1</sup> (n/a with 3.0L diesel engine)
- Engine block heater<sup>1</sup>
- Rear axle – 3.73 non-limited-slip (3.3L engine)
- Rear axle – 3.15 electronic-locking (4x2 with 3.5L EcoBoost engine)
- Rear axle – 3.31 electronic-locking<sup>1</sup> (5.0L, 3.0L diesel, and 4x4 with 3.5L EcoBoost engines)
- Rear axle – 3.55 electronic-locking<sup>1</sup>
- Rear axle – 3.73 electronic-locking<sup>1</sup> (gas engines)
- Tires – LT245/70R17E BSW all-terrain<sup>1</sup>
- Trailer brake controller<sup>1</sup>

**FORD CO-PILOT360 TECHNOLOGY**

- Reverse Sensing System<sup>1</sup>

**SEATING**

- Cloth-trimmed front bucket seats with flow-through center console with lockable storage and 2 rear-facing powerpoints<sup>1</sup> (SuperCab/SuperCrew)
- Vinyl-trimmed 40/20/40 split front seat (includes vinyl rear seat)

**INTERIOR**

- 110V/400W AC power outlet<sup>1</sup> (1 on center stack; 1 additional on back of center console with front bucket seats; SuperCab/SuperCrew)
- Carpet with carpeted floor mats<sup>1</sup>
- Floor liners<sup>1</sup> (SuperCab/SuperCrew)
- Rear privacy glass and rear window defroster
- Smoker's Pack with ash cup/coin holder

**CONNECTIVITY & ENTERTAINMENT**

- Audio Upgrade by KICKER<sup>®</sup> includes 8" subwoofer and an integrated 100-watt digital amplifier<sup>1</sup> (SuperCab/SuperCrew)
- SiriusXM<sup>®</sup> with 6-month All Access trial subscription<sup>1,4</sup>

**EXTERIOR**

- Bed divider<sup>1</sup>
- Bedliner – Plastic drop-in
- Bedliner – Tough Bed<sup>®</sup> spray-in
- Box side steps
- BoxLink™ with 4 premium removable and lockable cleats
- Cab steps – Black platform running boards
- Front license plate bracket (standard where required)
- Halogen fog lamps<sup>1</sup>
- Mirrors – Manual-folding sideview with power, heated glass, high-intensity LED security approach lamps, LED spotlights, integrated turn signal indicators, and interior auto-dimming rearview mirror<sup>1</sup>
- Mirrors – Manual-folding/-telescoping trailer tow with power, heated glass, high-intensity LED security approach lamps, LED spotlights, and integrated turn signal indicators<sup>1</sup>
- Skid plates for front differential, transfer case and fuel tank<sup>1</sup> (4x4)
- Stowable loading ramps<sup>1</sup>
- Tailgate step with tailgate lift assist
- Tonneau cover – Hard-folding<sup>1,5</sup>
- Tonneau cover – Soft-folding<sup>1,5</sup>
- Toolbox – Aluminum crossbed<sup>1,5</sup>
- Toolbox – Premium aluminum crossbed<sup>1,5</sup>

**EQUIPMENT GROUP**

- Equipment Group 101A: XL Power Equipment Group** includes power door and tailgate locks with autolock; Remote Keyless Entry System; power windows; manual-folding sideview mirrors with power glass; Illuminated Entry System; MyKey<sup>®</sup>; and perimeter alarm + cruise control + 4.2" productivity screen in instrument cluster + SYNC<sup>®</sup> Voice Recognition Communications and Entertainment System with 4.2" LCD screen in center stack, 911 Assist<sup>®</sup> AppLink<sup>®</sup> and 1 smart-charging USB port + FordPass Connect™<sup>6</sup> with 4G LTE Wi-Fi hotspot capability (enables FordPass™ App<sup>7</sup> features when activated)

**PACKAGES**

- Chrome Package:**<sup>1</sup> 17" Silver-painted aluminum wheels, body-color front fascia, chrome bumpers, and halogen fog lamps
- Sport Package:**<sup>1</sup> 17" Silver-painted aluminum wheels, body-color front fascia and bumpers, halogen fog lamps, and SPORT box decals (decals n/a with FX4 Off-Road Package)
- STX Package:**<sup>1</sup> (SuperCab/SuperCrew; requires Sport Package): 20" machined aluminum wheels with Flash Gray-painted pockets and 275/55R20 BSW all-season tires (4x2) or 275/55R20 BSW all-terrain tires (4x4); black mesh grille with body-color surround, body-color front fascia and bumpers; halogen fog lamps; STX cargo box decals (n/a with FX4 Off-Road Package); SYNC 3 with 8" LCD capacitive touchscreen in center stack, 911 Assist, AppLink, Apple CarPlay<sup>®</sup> compatibility, Android Auto™ compatibility, and 2 smart-charging USB ports; STX Sport Black cloth-trimmed seats with manual driver and front-passenger lumbar, and front seat back map pockets; rear privacy glass; and rear-window defroster
- STX Sport Special Edition Package:**<sup>1</sup> (SuperCab/SuperCrew; requires Sport and STX Packages): 20" Low-Gloss Black-painted aluminum wheels with 275/55R20 BSW all-season tires (4x2) or 275/55R20 BSW all-terrain tires (4x4), STX cargo box decals, Sport bodyside stripes, and chrome exhaust tip

**Capability Packages:** content can be found on a dedicated page later in this brochure

<sup>1</sup>Restrictions may apply. See your dealer for details. <sup>2</sup>FordPass App connectivity expected in early 2020. <sup>3</sup>Always wear your safety belt and follow airbag warning label instructions. <sup>4</sup>Certain restrictions, 3rd-party terms and data rates may apply. See footnote 1 on the "Your Tech, Your Way" pages, and your Ford Dealer for details. <sup>5</sup>Ford Licensed Accessory. <sup>6</sup>Certain restrictions, 3rd-party terms and data rates may apply. See footnote 7 on the "Your Tech, Your Way" pages, and your Ford Dealer for details. <sup>7</sup>FordPass App, for use with FordPass Connect, is available via download and compatible with select smartphone platforms. FordPass is on the App Store<sup>®</sup> and Google Play.<sup>™</sup> Learn more at [www.fordpass.com](http://www.fordpass.com). Message and data rates may apply. <sup>8</sup>Metallic. <sup>9</sup>Not available with Sport or STX Packages. <sup>10</sup>Requires Sport Package. <sup>11</sup>Not available with STX Sport Special Edition Package.



17" Silver Steel Standard



17" Silver-Painted Aluminum  
Included: Chrome and Sport Packages



18" Silver Heavy-Duty Aluminum  
Included: Heavy-Duty Payload Package



20" Machined Aluminum with Flash Gray-Painted Pockets  
Included: STX Package



20" Low-Gloss Black-Painted Aluminum  
Included: STX Sport Special Edition Package



STANDARD



CHROME PACKAGE



SPORT PACKAGE



STX PACKAGE



NEW  
STX SPORT SPECIAL EDITION PACKAGE

DARK EARTH GRAY CLOTH  
Standard

MEDIUM EARTH GRAY VINYL  
Available

SPORT BLACK CLOTH  
STX/STX Sport Special Edition  
Package

OXFORD WHITE

ICONIC SILVER<sup>®</sup>

RACE RED

VELOCITY BLUE<sup>®</sup>

STONE GRAY<sup>®,9</sup>

ABYSS GRAY<sup>®,10,11</sup>

LEAD FOOT<sup>1,10</sup>

MAGNETIC<sup>®</sup>

BLUE JEANS<sup>®,9</sup>

MAGMA RED<sup>®,10</sup>

AGATE BLACK<sup>®</sup>

4x2 | Standard

4x4 | Available



**3.3L TI-VCT V6 FFV**

Standard: Regular Cab, SuperCab 6.5' Box, SuperCrew® 5.5' Box

**2.7L ECOBOOST® V6**

Standard: SuperCab 8' Box 4x2, SuperCrew 6.5' Box 4x2

Available: Regular Cab, SuperCab 6.5' Box, SuperCrew 5.5' Box

**5.0L TI-VCT V8 FFV**

Standard: SuperCab 8' Box 4x4, SuperCrew 6.5' Box 4x4

Available: Regular Cab, SuperCab, SuperCrew

**3.5L ECOBOOST V6**

Available: Regular Cab 8' Box, SuperCab, SuperCrew

**3.0L POWER STROKE® V6 TURBO DIESEL**

Available: SuperCab 6.5' Box, SuperCrew



**REGULAR CAB**

6.5' Box | 8' Box

**SUPERCAB**

6.5' Box | 8' Box

**SUPERCREW**

5.5' Box | 6.5' Box



**40/20/40 SPLIT FRONT BENCH SEAT**

Standard

**FRONT BUCKET SEATS WITH CENTER CONSOLE**

Available



**THE RIGHT REFINEMENTS**

XLT takes the great XL features and adds a substantial list of popular standards. Like a chrome grille and bumpers. Carpeted flooring. Power windows and door locks. Power tailgate lock. SYNC® 3 with 8" LCD touchscreen. FordPass Connect™1 with 4G LTE Wi-Fi hotspot capability. To see which Appearance Package to add for more visual excitement, just turn the page.

<sup>1</sup>FordPass Connect (optional on select vehicles), the FordPass App, and complimentary Connected Service are required for remote features (see FordPass Terms for details). Connected service and features depend on compatible AT&T network availability. Evolving technology/cellular networks/vehicle capability may limit functionality and prevent operation of connected features. Connected service excludes Wi-Fi hotspot. Don't drive distracted or while using handheld devices. Use voice controls.



# XLT

FORDPASS CONNECT<sup>1</sup> WITH 4G LTE WI-FI CAPABILITY

SYNC 3 WITH 8" LCD TOUCHSCREEN

MANUAL-FOLDING SIDEVIEW MIRRORS WITH POWER/HEATED GLASS

SECURICODE™ KEYLESS ENTRY KEYPAD

CRUISE CONTROL



SuperCrew interior. Medium Earth Gray cloth seating. Available equipment.

SuperCrew 4x4. Rapid Red. Chrome Package. Available equipment.

SuperCrew 4x4. Velocity Blue. Special Edition Package. Available equipment.

SuperCrew 4x4. Iconic Silver. Chrome Package. Available equipment.



XLT (EQUIPMENT GROUP 300A)  
INCLUDES SELECT XL FEATURES, PLUS:

**SEATING**

4-way adjustable driver and right-front-passenger head restraints  
40/20/40 split front bench, center under-seat lockable storage with 12V powerpoint, and folding armrest with storage  
Driver and right-front-passenger manual lumbar

**INTERIOR**

Accessory delay for power features  
Carpet with carpeted floor mats  
Cruise control  
Illuminated Entry System  
MyKey® technology to help encourage responsible driving  
Power door and tailgate locks with autolock  
Power windows with front one-touch-up/-down feature  
Rear privacy glass

**CONNECTIVITY & ENTERTAINMENT**

FordPass Connect™<sup>1</sup> with 4G LTE Wi-Fi hotspot capability (enables FordPass™ App<sup>2</sup> features when activated)  
SYNC® 3 with 8" LCD capacitive touchscreen in center stack, 911 Assist® AppLink®, Apple CarPlay® compatibility, Android Auto™ compatibility, and 2 smart-charging USB ports

**EXTERIOR**

Chrome grille and bumpers  
Halogen fog lamps  
Mirrors – Manual-folding sideview with power glass  
Perimeter alarm  
Remote Keyless Entry System  
SecuriCode™ keyless entry keypad

AVAILABLE FEATURES AND PACKAGES:

**MECHANICAL**

36-gallon extended-range fuel tank<sup>3</sup>  
Engine block heater<sup>3</sup>  
Rear axle – 3.73 non-limited-slip<sup>3</sup> (3.3L engine)  
Rear axle – 3.15 electronic-locking (4x2 with 3.5L EcoBoost® engine)  
Rear axle – 3.31 electronic-locking<sup>3</sup> (5.0L, 3.0L diesel, and 4x4 with 3.5L EcoBoost engines)  
Rear axle – 3.55 electronic-locking<sup>3</sup>  
Rear axle – 3.73 electronic-locking<sup>3</sup> (gas engines)  
Tires – LT245/70R17E BSW all-terrain<sup>3</sup>  
Tires – 265/60R18 BSW all-season<sup>3</sup> (4x2)  
Tires – 275/65R18 OWL all-terrain<sup>3</sup> (4x4)  
Tires – LT275/65R18C OWL all-terrain<sup>3</sup> (4x4)  
Tires – 275/55R20 BSW all-season<sup>3</sup> (4x2)  
Tires – 275/55R20 BSW all-terrain<sup>3</sup> (4x4)  
Tires – 275/55R20 OWL all-terrain<sup>3</sup> (4x4)  
Trailer brake controller<sup>3</sup>

**FORD CO-PILOT360™ TECHNOLOGY**

BLIS® (Blind Spot Information System) with Trailer Coverage and Cross-Traffic Alert<sup>3</sup>  
Reverse Sensing System<sup>3</sup>  
Voice-Activated Touchscreen Navigation System<sup>3</sup> with pinch-to-zoom capability (includes SiriusXM® Traffic and Travel Link® with 5-year subscription<sup>4</sup>)

**SEATING**

Front bucket seats and flow-through center console with lockable storage and 2 rear-facing powerpoints<sup>3</sup> (SuperCab/SuperCrew®)

**INTERIOR**

110V/400W AC power outlet<sup>3</sup> (1 on center stack; 1 additional on back of center console with front bucket seats; SuperCab/SuperCrew)  
Black vinyl flooring<sup>3</sup>  
Floor liners<sup>3</sup> (SuperCab/SuperCrew)  
Inflatable rear safety belts in outboard seating positions<sup>3</sup> (SuperCrew)

Power-sliding rear window with defroster<sup>3</sup> (SuperCab/SuperCrew)  
Rear-window defroster  
Remote Start System<sup>3</sup>  
Smoker's Pack with ash cup/coin holder

**CONNECTIVITY & ENTERTAINMENT**

Audio Upgrade by KICKER® includes 8" subwoofer and an integrated 100-watt digital amplifier<sup>3</sup> (SuperCab/SuperCrew)

**EXTERIOR**

Bed divider<sup>3</sup>  
Bedliner – Plastic drop-in  
Bedliner – Tough Bed® spray-in  
Box side steps<sup>3</sup>  
BoxLink™ with 4 premium removable and lockable cleats  
Cab steps – Black platform running boards<sup>3</sup>  
Cab steps – Chrome step bars<sup>3</sup> (SuperCab/SuperCrew)  
Front license plate bracket (standard where required)  
LED cargo box lighting<sup>3</sup>  
LED sideview mirror spotlights with high-intensity LED security approach lamps<sup>3</sup>  
Mirrors – Manual-folding sideview with power, heated glass and integrated turn signal indicators; and auto-dimming rearview mirror  
Mirrors – Manual-folding/-telescoping trailer tow with power, heated glass, high-intensity LED security approach lamps, LED spotlights, and integrated turn signal indicators<sup>3</sup>  
Rear wheel-well liners<sup>3</sup>  
Stowable bed extender<sup>3</sup>  
Stowable loading ramps<sup>3</sup>  
Tailgate step with tailgate lift assist<sup>3</sup>  
Tonneau cover – Hard-folding<sup>3,5</sup>  
Tonneau cover – Soft-folding<sup>3,5</sup>  
Toolbox – Aluminum crossbed<sup>3,5</sup>  
Toolbox – Premium aluminum crossbed<sup>3,5</sup>  
Twin-panel moonroof<sup>3</sup> (SuperCrew)  
Two-tone paint with Magnetic lower accent color<sup>3</sup> (includes Magnetic bumpers unless Chrome Package is ordered)

**EQUIPMENT GROUPS**

**Equipment Group 301A:** rear-window defroster + 8-way power driver's seat + 4.2" productivity screen in instrument cluster + auto-dimming rearview mirror + power-adjustable pedals (SuperCab/SuperCrew) + rear underseat storage (SuperCab/SuperCrew) + SiriusXM with 6-month All Access trial subscription<sup>4</sup>

**Equipment Group 302A (SuperCab/SuperCrew):** includes all content of 301A + **Chrome Package** (see content below) + 10-way power, heated driver and right-front-passenger seats + manual-folding sideview mirrors with power, heated glass and integrated turn signal indicators + leather-wrapped steering wheel

**PACKAGES**

**Chrome Package<sup>3</sup> (SuperCab/SuperCrew):** 18" chrome-like PVD wheels with 265/60R18 BSW all-season (4x2) or 275/65R18 OWL all-terrain (4x4) tires; chrome grille with silver accents; and chrome front tow hooks (4x4), door and tailgate handles, step bars and exhaust tip

**Sport Package<sup>3</sup> (SuperCab/SuperCrew):** 18" 6-spoke machined aluminum wheels with Magnetic-painted pockets and 265/60R18 BSW all-season (4x2) or 275/65R18 OWL all-terrain (4x4) tires; Magnetic grille and step bars; body-color bumpers, wheel-lip moldings, and door and tailgate handles; SPORT box decals (n/a with FX4 Off-Road Package) chrome exhaust tip; unique finish on instrument panel, media bin lid and doors; black leather-wrapped steering wheel; and XLT sport cloth front bucket seats with flow-through center console and floor shifter

**Black Appearance Package<sup>3</sup> (SuperCab/SuperCrew; requires Sport Package):** 20" Low-Gloss Black-painted aluminum wheels with Black center cap and 275/55R20 BSW all-season (4x2) or 275/55R20 BSW all-terrain (4x4) tires, body-color grille surround with high-gloss Ebony mesh and Black Ford Oval, dark headlamp housings, Black front fender badges, 6" Black tubular cab steps, and Matte Black F-150 decals and Black Ford oval on the tailgate

**Special Edition Package<sup>3</sup> (SuperCrew; requires Sport Package):** 20" Low-Gloss Black-painted aluminum wheels with Blue center cap and 275/55R20 BSW all-season (4x2) or 275/55R20 BSW all-terrain (4x4) tires; black mesh grille with body-color surround; dark headlamp housings; unique bodyside and hood decals;<sup>6</sup> unique fender and tailgate badging; black running boards; black leather-wrapped steering wheel with red stitching; unique finish on instrument panel, media bin lid and doors; and XLT Special Edition Sport Black cloth front bucket seats with red stitching and flow-through center console with floor shifter

**XLT Power Equipment Group:<sup>3</sup>** 110V/400W AC power outlet (1 on center stack; 1 additional on back of center console with front bucket seats), power-sliding rear window with defroster, and LED cargo box lighting

**Capability Packages:** content can be found on a dedicated page later in this brochure

<sup>1</sup>Certain restrictions, 3rd-party terms and data rates may apply. See footnote 7 on the "Your Tech, Your Way" pages, and your Ford Dealer for details. <sup>2</sup>FordPass App, for use with FordPass Connect, is available via download and compatible with select smartphone platforms. FordPass is on the App Store® and Google Play.™ Learn more at www.fordpass.com. Message and data rates may apply. <sup>3</sup>Restrictions may apply. See your dealer for details. <sup>4</sup>Certain restrictions, 3rd-party terms and data rates may apply. See footnote 1 on the "Your Tech, Your Way" pages, and your Ford Dealer for details. <sup>5</sup>Ford Licensed Accessory. <sup>6</sup>Bodyside and hood decals delete option available. <sup>7</sup>Not available with Silver Spruce exterior. <sup>8</sup>Metallic. <sup>9</sup>Additional charge. <sup>10</sup>Not available with Sport Package. <sup>11</sup>Requires Sport Package. <sup>12</sup>Not available with Special Edition or Black Appearance Package. <sup>13</sup>Requires Special Edition or Black Appearance Package.



17" Silver-Painted Aluminum  
Standard: Gas Engines



18" Machined Aluminum  
with Flash Gray-Painted Pockets  
Standard: Diesel Engine



18" Silver Heavy-Duty Aluminum<sup>3</sup>  
Available  
Included: Heavy-Duty Payload Package



18" Chrome-Like PVD  
Included: Chrome Package



20" Chrome-Like PVD<sup>3</sup>  
Available: Chrome Package



18" 6-Spoke Machined Aluminum  
with Magnetic-Painted Pockets<sup>3</sup>  
Included: Sport Package



20" 6-Spoke  
Dark Alloy-Painted Aluminum<sup>3</sup>  
Available: Sport Package



20" Low-Gloss  
Black-Painted Aluminum  
with Black Center Cap  
Included: Black Appearance Package



20" Low-Gloss  
Black-Painted Aluminum  
with Blue Center Cap  
Included: Special Edition Package

MEDIUM EARTH GRAY CLOTH<sup>7</sup>  
Standard

MEDIUM LIGHT CAMEL CLOTH  
Standard

SPORT BLACK CLOTH  
Sport/Black Appearance Package

SPORT BLACK CLOTH  
WITH RED STITCHING  
Special Edition Package

OXFORD WHITE

ICONIC SILVER<sup>8</sup>

RACE RED

RAPID RED METALLIC  
TINTED CLEARCOAT<sup>9</sup>

VELOCITY BLUE<sup>8</sup>

SILVER SPRUCE<sup>8,10</sup>

STONE GRAY<sup>8,10</sup>

ABYSS GRAY<sup>8,11,12</sup>

LEAD FOOT<sup>3,13</sup>

MAGNETIC<sup>8</sup>

BLUE JEANS<sup>8,10,12</sup>

MAGMA RED<sup>8</sup>

AGATE BLACK<sup>8</sup>

Optional Magnetic lower accent two-tone



STANDARD



CHROME PACKAGE



SPORT PACKAGE



NEW  
BLACK APPEARANCE PACKAGE



SPECIAL EDITION PACKAGE

4x2 | Standard

4x4 | Available



**2.7L ECOBOOST® V6**

Standard: SuperCab 8' Box 4x2,  
SuperCrew® 6.5' Box 4x2

**5.0L TI-VCT V8 FFV**

Standard: SuperCab 8' Box 4x4,  
SuperCrew 6.5' Box 4x4  
Available: SuperCab, SuperCrew

**3.5L ECOBOOST V6**

Available: SuperCab, SuperCrew

**3.0L POWER STROKE® V6  
TURBO DIESEL**

Available: SuperCab 6.5' Box,  
SuperCrew



**SUPERCAB**

6.5' Box | 8' Box

**SUPERCREW**

5.5' Box | 6.5' Box

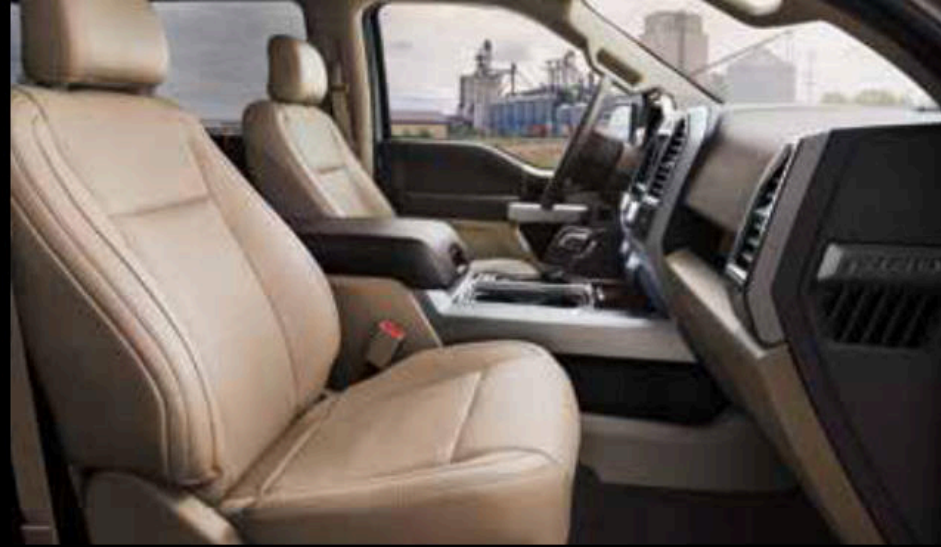


**40/20/40 SPLIT FRONT  
BENCH SEAT**

Standard

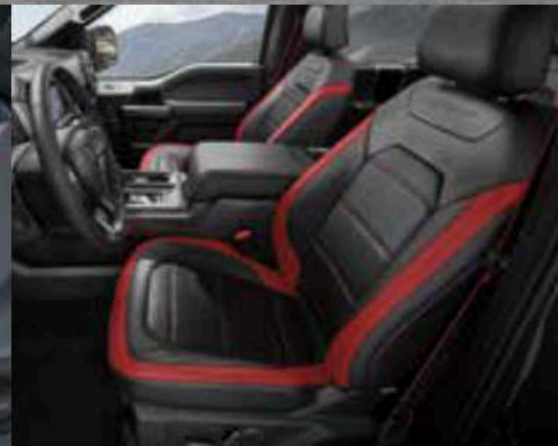
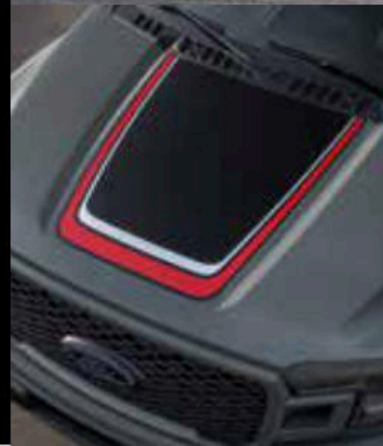
**FRONT BUCKET SEATS  
WITH CENTER CONSOLE**

Available



**ITS STANDARDS PUT YOU AT EASE** Behind the wheel of LARIAT, you're ready to tackle the day. Leather-trimmed, heated and ventilated 10-way power-adjustable front seats and power-adjustable pedals help drivers feel at home. An 8" LCD productivity screen displays vital information. Listen to your favorite channels on SiriusXM.<sup>®1</sup> Help keep an eye on your trailer in tow with power-folding sideview mirrors. For more attitude, add one of the LARIAT Appearance Packages listed on the next pages.

<sup>1</sup>Certain restrictions, 3rd-party terms and data rates may apply. See footnote 1 on the "Your Tech, Your Way" pages, and your Ford Dealer for details.



LEATHER-TRIMMED, HEATED AND VENTILATED 10-WAY POWER-ADJUSTABLE FRONT SEATS

DUAL-ZONE ELECTRONIC AUTOMATIC TEMPERATURE CONTROL

FORD CO-PILOT360™

8" LCD PRODUCTIVITY SCREEN

CLASS IV TRAILER HITCH



SuperCrew interior.  
Medium Light Camel  
leather-trimmed seating.  
Available equipment.

SuperCrew 4x4  
Abyss Gray.  
Special Edition Package.  
Available equipment.

Special Edition Package  
Hood graphic.

Special Edition Package interior.  
Black leather-trimmed seating  
with Red accents.  
Available equipment.

SuperCrew 4x4. Rapid Red.  
Sport Package.  
Available equipment.

# LARIAT

# LARIAT

LARIAT (EQUIPMENT GROUP 500A)  
INCLUDES SELECT XLT FEATURES, PLUS:

## MECHANICAL

2-speed automatic 4WD system with neutral towing capability (4x4)

Class IV Trailer Hitch with 4-pin/7-pin wiring harness and Smart Trailer Tow Connector

Tires - 265/60R18 BSW all-season (4x2)

Tires - 275/65R18 OWL all-terrain (4x4)

## FORD CO-PILOT360™ TECHNOLOGY

Ford Co-Pilot360: Pre-Collision Assist with Automatic Emergency Braking (AEB), BLIS® (Blind Spot Information System) with Trailer Coverage and Cross-Traffic Alert, Lane-Keeping System, Auto High-Beam Headlamps, Rear View Camera with Dynamic Hitch Assist

## SEATING

10-way power heated and ventilated driver and right-front-passenger seats

Memory driver's seat

60/40 split one-touch flip-up rear seat with underseat storage (SuperCrew® includes folding armrest with cupholders)

Leather-trimmed front with vinyl rear on SuperCab; leather-trimmed rear on SuperCrew

## INTERIOR

8" productivity screen in instrument cluster

Auto-dimming rearview mirror

Dual-zone electronic automatic temperature control

Ice Blue® ambient lighting

Intelligent Access with push-button start

Leather-wrapped steering wheel

Power-adjustable accelerator and brake pedals with memory

Power-sliding rear window with defroster

## CONNECTIVITY & ENTERTAINMENT

7 audio system speakers

SiriusXM® with 6-month All Access trial subscription<sup>1</sup>

## EXTERIOR

Advanced Security Pack includes SecuriLock® Passive Anti-Theft System and inclination/intrusion sensors

Body-color sideview mirror caps, door and tailgate handles, and wheel-lip moldings

LED trailer hook-up light

Mirrors - Power-folding sideview with power, heated glass, memory, integrated turn signal indicators, high-intensity LED security approach lamps, and driver's side auto-dimming feature

## AVAILABLE FEATURES AND PACKAGES:

### MECHANICAL

36-gallon extended-range fuel tank (n/a with 3.0L diesel engine)

Engine block heater<sup>2</sup>

Rear axle - 3.15 electronic-locking (4x2 with 3.5L EcoBoost® engine)

Rear axle - 3.31 electronic-locking (5.0L, 3.0L diesel, and 4x4 with 3.5L EcoBoost engines)

Rear axle - 3.55 electronic-locking<sup>2</sup>

Rear axle - 3.73 electronic-locking<sup>2</sup> (gas engines)

Tires - LT275/65R18C OWL all-terrain<sup>2</sup> (4x4)

Tires - 275/55R20 BSW all-season<sup>2</sup> (4x2)

Tires - 275/55R20 BSW all-terrain<sup>2</sup> (4x4)

Tires - 275/55R20 OWL all-terrain<sup>2</sup> (4x4)

Trailer brake controller

### FORD CO-PILOT360 TECHNOLOGY

Adaptive Cruise Control with Stop-and-Go<sup>2</sup>

Rain-Sensing Windshield Wipers (only available in 502A)

Reverse Sensing System

Technology Package:<sup>2</sup> Active Park Assist and 360-Degree Camera with Split-View Display

Voice-Activated Touchscreen Navigation System with pinch-to-zoom capability (includes SiriusXM Traffic and Travel Link® with 5-year subscription<sup>1</sup>)

## SEATING

Front bucket seats with flow-through center console with lockable storage, floor shifter, and 2 rear-facing powerpoints<sup>2</sup>

## INTERIOR

110V/400W AC power outlet (1 on center stack; 1 additional on back of center console with front bucket seats)

Floor liners

Inflatable rear safety belts in outboard seating positions<sup>2</sup> (SuperCrew)

Smoker's Pack with ash cup/coin holder

## EXTERIOR

Bed divider<sup>2</sup>

Bedliner - Plastic drop-in

Bedliner - Tough Bed® spray-in

Box side steps

Cab steps - Chrome angular step bars

Cab steps - Power-deployable running boards<sup>2</sup> (SuperCrew)

Front license plate bracket (standard where required)

LED sideview mirror spotlights with high-intensity LED security approach lamps

Mirrors - PowerScope® power-telescoping/-folding trailer tow with power, heated glass, integrated turn signal indicators, high-intensity LED security approach lamps, LED spotlights, driver's side auto-dimming feature, and black mirror caps (requires Trailer Tow Package or Max. Trailer Tow Package)

Rear wheel-well liners<sup>2</sup>

Stowable bed extender<sup>2</sup>

Stowable loading ramps<sup>2</sup>

Tailgate step with tailgate lift assist

Tonneau cover - Hard-folding<sup>2,3</sup>

Tonneau cover - Soft-folding<sup>2,3</sup>

Toolbox - Aluminum crossbed<sup>2,3</sup>

Toolbox - Premium aluminum crossbed<sup>2,3</sup>

Twin-panel moonroof<sup>2</sup> (SuperCrew)

Two-tone paint with Stone Gray lower accent color<sup>2</sup> (includes Stone Gray bumpers and wheel-lip moldings; chrome bumpers with Chrome Package)

## EQUIPMENT GROUPS

**Equipment Group 501A:** Remote Start System + remote tailgate release + Reverse Sensing System + power-folding sideview mirrors with power, heated glass, memory, integrated turn signal indicators, high-intensity LED security approach lamps, and driver's side auto-dimming feature + 110V/400W AC power outlet on center stack

**Equipment Group 502A:<sup>2</sup>** includes all content of 501A + **Chrome Package** (see content under Packages) + **Bed Utility Package** (see content under Packages) + 10-way power, heated and ventilated front bucket seats with memory driver's seat and flow-through center console with floor shifter + heated rear outboard seats (SuperCrew) + 110V/400W AC power outlet on back of center console + B&O Sound System with HD Radio™ Technology + power-tilt/-telescoping steering column with memory + heated steering wheel + universal garage door opener + quad-beam LED headlamps + LED fog lamps + Rain-Sensing Windshield Wipers + windshield wiper de-icer + LED sideview mirror spotlights

## PACKAGES

**Chrome Package:<sup>2</sup>** 18" chrome-like PVD wheels; chrome grille with silver accents; and chrome front tow hooks (4x4), sideview mirror caps, door and tailgate handles, angular step bars, and exhaust tip

**Sport Package:<sup>2</sup>** 18" 6-spoke machined aluminum wheels with Magnetic-painted pockets (gas only; diesel requires 20" 6-spoke Dark Alloy-painted aluminum wheels); body-color grille and bumpers; Magnetic angular step bars; SPORT box decals (n/a with FX4 Off-Road Package); chrome exhaust tip; unique finish on instrument panel, media bin lid and doors; and front bucket seats and flow-through center console with floor shifter

**Black Appearance Package<sup>2</sup>** (requires Sport Package): 20" Low-Gloss Black-painted aluminum wheels with Black center cap and 275/55R20 BSW all-season (4x2) or 275/55R20 BSW all-terrain (4x4) tires, body-color grille surround with high-gloss Ebony mesh and Black Ford oval, dark headlamp housings, Black front fender badges, 6" Black tubular cab steps, and Matte Black F-150 decals and Black Ford Oval on the tailgate

**Special Edition Package<sup>2</sup>** (SuperCrew; requires Sport Package): 20" Low-Gloss Black-painted aluminum wheels with Blue center cap and 275/55R20 BSW all-season (4x2) or 275/55R20 BSW all-terrain (4x4) tires; Dark Foundry mesh grille with body-color surround; dark headlamp housings; unique bodyside and hood decals;<sup>4</sup> unique fender and tailgate badging; black running boards; black leather-wrapped steering wheel with red stitching; unique finish on instrument panel, media bin lid and doors; and LARIAT Special Edition black leather-trimmed front bucket seats with red accents and flow-through center console with floor shifter

**Bed Utility Package:** LED cargo box lighting and BoxLink™ with 4 premium removable and lockable cleats

**Capability Packages:** content can be found on a dedicated page later in this brochure

<sup>1</sup>Certain restrictions, 3rd-party terms and data rates may apply. See footnote 1 on the "Your Tech, Your Way" pages, and your Ford Dealer for details. <sup>2</sup>Restrictions may apply. See your dealer for details. <sup>3</sup>Ford Licensed Accessory. <sup>4</sup>Bodyside and hood decals delete option available. <sup>5</sup>Not available with two-tone paint or Silver Spruce exterior. <sup>6</sup>Additional charge. <sup>7</sup>Not available with Sport Package. <sup>8</sup>Metallic. <sup>9</sup>Requires Chrome Package. <sup>10</sup>Requires Sport Package. <sup>11</sup>Not available with Special Edition or Black Appearance Package.



18" Machined Aluminum with Flash Gray-Painted Pockets Standard



20" 6-Spoke Dark Alloy-Painted Aluminum<sup>2</sup> Included: Sport Package with Diesel Engine Available: Sport Package with Gas Engine



18" Chrome-Like PVD Included: Chrome Package



20" Chrome-Like PVD<sup>2</sup> Available: Chrome Package



18" 6-Spoke Machined Aluminum with Magnetic-Painted Pockets<sup>2</sup> Included: Sport Package with Gas Engine



20" Low-Gloss Black-Painted Aluminum with Black Center Cap Included: Black Appearance Package



20" Low-Gloss Black-Painted Aluminum with Blue Center Cap Included: Special Edition Package

MEDIUM EARTH GRAY LEATHER Standard<sup>2</sup>

MEDIUM LIGHT CAMEL LEATHER Standard

BLACK LEATHER Standard

BLACK LEATHER Sport/Black Appearance Package

BLACK LEATHER WITH RED ACCENTS Special Edition Package

STAR WHITE METALLIC TINTED CLEARCOAT<sup>6,7</sup>

OXFORD WHITE

ICONIC SILVER<sup>8</sup>

RACE RED<sup>9</sup>

RAPID RED METALLIC TINTED CLEARCOAT<sup>6</sup>

VELOCITY BLUE<sup>8,10</sup>

SILVER SPRUCE<sup>2,7,8</sup>

STONE GRAY<sup>7,8</sup>

ABYSS GRAY<sup>8,10,11</sup>

LEAD FOOT<sup>2,10</sup>

MAGNETIC<sup>8</sup>

BLUE JEANS<sup>7,8</sup>

MAGMA RED<sup>8</sup>

AGATE BLACK<sup>4</sup>

Optional Stone Gray lower accent two-tone



STANDARD



CHROME PACKAGE



SPORT PACKAGE



NEW BLACK APPEARANCE PACKAGE



SPECIAL EDITION PACKAGE

4x2 | Standard

4x4 | Available



5.0L Ti-VCT V8 FFV  
Standard

3.5L ECOBOOST® V6  
Available

3.0L POWER STROKE® V6  
TURBO DIESEL  
Available



SUPERCREW®  
5.5' Box | 6.5' Box



FRONT BUCKET SEATS  
WITH CENTER CONSOLE  
Standard

GENUINE WOOD INTERIOR ACCENTS

POWER-TILT/-TELESCOPING STEERING COLUMN

QUAD-BEAM LED HEADLAMPS AND LED TAILLAMPS

REMOTE START SYSTEM

REMOTE TAILGATE RELEASE

RAIN-SENSING WINDSHIELD WIPERS

# KING RANCH

**SOUTHWESTERN LUXURY AT ITS FINEST** Starting with the standard two-tone exterior. Inside, Kingsville KING RANCH leather covers the heated and ventilated 10-way power front seats, rear seats, and flow-through console lid and heated steering wheel. Seat backs, floor mats, center console lid, and 18" machined aluminum wheels with painted pockets are branded with the "Running W" logo of the historic King Ranch® in Texas. Our Voice-Activated Touchscreen Navigation System with SiriusXM® Traffic and Travel Link® helps guide you on your way. A 750-watt B&O Sound System supplies the soundtrack.



SuperCrew interior.  
Kingsville KING RANCH  
leather front and rear seats  
with Tuxedo stripes.

SuperCrew 4x4.  
Star White/Stone Gray two-tone.  
Available equipment.

# KING RANCH®

KING RANCH (EQUIPMENT GROUP 600A) INCLUDES SELECT LARIAT FEATURES, PLUS:

## FORD CO-PILOT360™ TECHNOLOGY

Rain-Sensing Windshield Wipers  
Reverse Sensing System  
Voice-Activated Touchscreen Navigation System with pinch-to-zoom capability (includes SiriusXM® Traffic and Travel Link® with 5-year subscription<sup>1</sup>)

## SEATING

Front bucket seats with flow-through center console with lockable storage and 2 rear-facing powerpoints  
Heated rear outboard seats

## INTERIOR

110V/400W AC power outlets  
Center console-mounted floor shifter  
Genuine Khaya wood interior trim accents  
Heated steering wheel  
Leather-wrapped center console lid, shift knob and steering wheel  
Metallic door-sill scuff plate inserts with KING RANCH lettering and running "W" logo  
Power-tilt/-telescoping steering column with memory  
Universal garage door opener

## CONNECTIVITY & ENTERTAINMENT

B&O Sound System with 10 speakers including subwoofer, and HD Radio™ Technology

## EXTERIOR

BoxLink™ with 4 premium removable and lockable cleats  
Cab steps – Accent-color 6" angular step bars  
Chrome exhaust tip  
Chrome grille with accent color mesh  
LED fog lamps and taillamps  
LED sideview mirror spotlights with high-intensity LED security approach lamps  
Quad-beam LED headlamps  
Remote Start System  
Remote tailgate release  
Two-tone paint with Stone Gray lower accent paint, bumpers and wheel-lip moldings  
Windshield wiper de-icer

## AVAILABLE FEATURES AND PACKAGES:

### MECHANICAL

36-gallon extended-range fuel tank (n/a with 3.0L diesel engine)  
Engine block heater<sup>2</sup>  
Rear axle – 3.15 electronic-locking (4x2 with 3.5L EcoBoost® engine)  
Rear axle – 3.31 electronic-locking (5.0L, 3.0L diesel, and 4x4 with 3.5L EcoBoost engines)  
Rear axle – 3.55 electronic-locking<sup>2</sup>  
Rear axle – 3.73 electronic-locking<sup>2</sup> (gas engines)  
Tires – 275/55R20 BSW all-season (4x2)  
Tires – 275/55R20 OWL all-terrain (4x4)  
Trailer brake controller

## FORD CO-PILOT360 TECHNOLOGY

Adaptive Cruise Control with Stop-and-Go<sup>2</sup>  
Technology Package:<sup>2</sup> Active Park Assist and 360-Degree Camera with Split-View Display

## INTERIOR

Floor liners  
Smoker's Pack with ash cup/coin holder

## EXTERIOR

Bed divider<sup>2</sup>  
Bedliner – Plastic drop-in  
Bedliner – Tough Bed® spray-in  
Box side steps  
Front license plate bracket (standard where required)  
Mirrors – PowerScope® power-telescoping/-folding trailer tow with power, heated glass, integrated turn signal indicators, high-intensity LED security approach lamps, LED spotlights, driver's side auto-dimming feature, and chrome mirror caps (requires Trailer Tow Package or Max. Trailer Tow Package)  
Rear wheel-well liners  
Stowable bed extender  
Stowable loading ramps<sup>2</sup>  
Tailgate step with tailgate lift assist  
Tonneau cover – Hard-folding<sup>2,3</sup>  
Tonneau cover – Soft-folding<sup>2,3</sup>  
Toolbox – Aluminum crossbed<sup>2,3</sup>  
Toolbox – Premium aluminum crossbed<sup>2,3</sup>  
Twin-panel moonroof

## EQUIPMENT GROUP

Equipment Group 601A: 20" machined aluminum wheels with Light Caribou-painted pockets + 275/55R20 BSW all-season (4x2) or 275/55R20 OWL all-terrain (4x4) tires + tailgate step with tailgate lift assist + multicontour front bucket seats with Active Motion® + inflatable rear safety belts in outboard seating positions + power-deployable running boards

## PACKAGES

**Chrome Package:**<sup>2</sup> 20" chrome-like PVD wheels with 275/55R20 BSW all-season (4x2) or 275/55R20 OWL all-terrain (4x4) tires; chrome bumpers, front tow hooks (4x4), sideview mirror caps, and door and tailgate handles; bright beltline moldings; and satin-aluminum tailgate appliqué

**Monochrome Package**<sup>2</sup> (requires Chrome Package): monochromatic paint with body-color wheel-lip moldings

**Capability Packages:** content can be found on a dedicated page later in this brochure

<sup>1</sup>Certain restrictions, 3rd-party terms and data rates may apply. See footnote 1 on the "Your Tech, Your Way" pages, and your Ford Dealer for details. <sup>2</sup>Restrictions may apply. See your dealer for details. <sup>3</sup>Ford Licensed Accessory. <sup>4</sup>Additional charge. <sup>5</sup>Metallic. <sup>6</sup>Requires Chrome Package.



18" Machined Aluminum with Flash Gray-Painted Pockets Standard



20" Machined Aluminum with Light Caribou-Painted Pockets<sup>2</sup> Available



20" Chrome-Like PVD Included: Chrome Package



KINGSVILLE KING RANCH LEATHER WITH TUXEDO STRIPES

STAR WHITE METALLIC TINTED CLEARCOAT<sup>4</sup>

OXFORD WHITE

RAPID RED METALLIC TINTED CLEARCOAT<sup>4</sup>

STONE GRAY<sup>5,6</sup>

BLUE JEANS<sup>5</sup>

MAGMA RED<sup>5</sup>

AGATE BLACK<sup>4</sup>

Standard Stone Gray lower accent two-tone



STANDARD



CHROME PACKAGE



MONOCHROME PACKAGE



SuperCrew® instrument panel. Kingsville KING RANCH leather seats with Tuxedo stripes.

SuperCrew 4x4. Star White/Stone Gray two-tone. Available equipment.

# PLATINUM

**A CUT ABOVE** Featuring standard LED lighting all around (headlamps, fog lamps and taillamps), a Satin-aluminum grille with Silver mesh, bright beltline moldings, as well as 20" polished aluminum wheels. Power-deployable running boards give you a lift inside, where a leather-wrapped, heated steering wheel and multicontour front bucket seats with Active Motion® await you. Front and rear Luxury leather seating surfaces are available in Dark Marsala or Black. Rear outboard seats are heated. LED sideview mirror spotlights, along with BLIS® with Trailer Coverage, improve on your already powerful capability. Raise your profile with the 2020 F-150 PLATINUM.



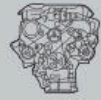
SuperCrew® interior.  
Dark Marsala Luxury leather  
front and rear seating surfaces  
with Tuxedo stripes.

SuperCrew 4x4.  
Magnetic.  
Available equipment.

# PLATINUM

4x2 | Standard

4x4 | Available



5.0L Ti-VCT V8 FFV  
Standard

3.5L ECOBOOST® V6  
Available

3.0L POWER STROKE® V6  
TURBO DIESEL  
Available



SUPERCREW®  
5.5' Box | 6.5' Box



FRONT BUCKET SEATS  
WITH CENTER CONSOLE  
Standard

PLATINUM (EQUIPMENT GROUP 700A)  
INCLUDES SELECT LARIAT FEATURES, PLUS:

## MECHANICAL

Tires - 275/55R20 BSW all-season (4x2)

Tires - 275/55R20 BSW all-terrain (4x4)

## FORD CO-PILOT360™ TECHNOLOGY

Rain-Sensing Windshield Wipers

Reverse Sensing System

Voice-Activated Touchscreen Navigation System  
with pinch-to zoom capability (includes SiriusXM®  
Traffic and Travel Link® with 5-year subscription¹)

## SEATING

Multicontour front bucket seats with Active Motion®  
and flow-through center console with lockable  
storage and 2 rear-facing powerpoints

Heated rear outboard seats

## INTERIOR

110V/400W AC power outlets

Center console-mounted floor shifter

Genuine Black Ash wood interior trim accents

Heated steering wheel

Inflatable rear safety belts in outboard  
seating positions

Leather-wrapped center console lid, shift knob  
and steering wheel

Metallic door-sill scuff plate inserts  
with PLATINUM lettering

Power-tilt/-telescoping steering column with memory

Unique gauge cluster face

Universal garage door opener

## CONNECTIVITY & ENTERTAINMENT

B&O Sound System with 10 speakers including  
subwoofer, and HD Radio™ Technology

## EXTERIOR

Body-color bumpers

Bright beltline moldings

Chrome front tow hooks (4x4), sideview mirror caps,  
door and tailgate handles, and exhaust tip

LED fog lamps and taillamps

LED sideview mirror spotlights with high-intensity  
LED security approach lamps

Power-deployable running boards

Quad-beam LED headlamps

Remote Start System

Remote tailgate release

Satin-aluminum grille with silver mesh

Satin-aluminum tailgate appliqué

Windshield wiper de-icer

## AVAILABLE FEATURES AND PACKAGES:

## MECHANICAL

36-gallon extended-range fuel tank  
(n/a with 3.0L diesel engine)

Engine block heater²

Rear axle - 3.15 electronic-locking  
(4x2 with 3.5L EcoBoost engine)

Rear axle - 3.31 electronic-locking (5.0L, 3.0L diesel,  
and 4x4 with 3.5L EcoBoost engines)

Rear axle - 3.55 electronic-locking²

Rear axle - 3.73 electronic-locking² (gas engines)

Trailer brake controller

## FORD CO-PILOT360 TECHNOLOGY

Ford Co-Pilot360 Assist: Adaptive Cruise Control  
with Stop-and-Go, and Voice-Activated Touchscreen  
Navigation System³ (only available in 701A)

Technology Package: Active Park Assist, and  
360-Degree Camera with Split-View Display

## INTERIOR

Floor liners

Smoker's Pack with ash cup/coin holder

## EXTERIOR

Bed divider²

Bedliner - Plastic drop-in

Bedliner - Tough Bed® spray-in

Box side steps

Front license plate bracket (standard where required)

Mirrors - PowerScope® power-telescoping/-folding  
trailer tow with power, heated glass, integrated  
turn signal indicators, high-intensity LED security  
approach lamps, LED spotlights, driver's side auto-  
dimming feature, and chrome mirror caps (requires  
Trailer Tow Package or Max. Trailer Tow Package)

Rear wheel-well liners

Stowable bed extender

Stowable loading ramps²

Tailgate step with tailgate lift assist

Tonneau cover - Hard-folding²,⁴

Tonneau cover - Soft-folding²,⁴

Toolbox - Aluminum crossbed²,⁴

Toolbox - Premium aluminum crossbed²,⁴

Twin-panel moonroof

## EQUIPMENT GROUP

Equipment Group 701A: Technology Package  
(see content under Ford Co-Pilot360 Technology)  
+ Ford Co-Pilot360 Assist (see content under Ford  
Co-Pilot360 Technology) + tailgate step with tailgate  
lift assist

## PACKAGES

Capability Packages: content can be found  
on a dedicated page later in this brochure

¹Certain restrictions, 3rd-party terms and data rates  
may apply. See footnote 1 on the "Your Tech, Your Way"  
pages, and your Ford Dealer for details. ²Restrictions  
may apply. See your dealer for details. ³Standard feature  
on PLATINUM. ⁴Ford Licensed Accessory. ⁵Additional  
charge. ⁶Metallic.



BLACK LUXURY LEATHER  
WITH TUXEDO STRIPES

DARK MARSALA LUXURY LEATHER  
WITH TUXEDO STRIPES

STAR WHITE METALLIC  
TINTED CLEARCOAT⁵

ICONIC SILVER⁶

RAPID RED METALLIC  
TINTED CLEARCOAT⁵

MAGNETIC⁶

BLUE JEANS⁶

MAGMA RED⁶

AGATE BLACK⁶



SuperCrew 4x4. Magnetic.  
Satin-aluminum tailgate appliqué.  
Available equipment.

SuperCrew 4x4.  
Magma Red.  
Available equipment.



20" Polished Aluminum

# LIMITED

**DON'T LET ITS OPULENCE FOOL YOU** The 2020 LIMITED comes ready to work with the High-Output 3.5L EcoBoost® engine that produces best-in-class horsepower (450)<sup>1</sup> and torque (510 lb.-ft.)<sup>1</sup> Also standard are a 36-gallon extended-range fuel tank, mechanical-locking 4WD, dual exhaust with Satin-Aluminum tips, and multiple Ford Co-Pilot360™ Technology driver-assist features. As well as a truckload of amenities that includes 22" polished aluminum wheels, a Miko® suede headliner and twin-panel moonroof, Regency leather heated and ventilated 10-way power driver and front-passenger seats, Regency leather heated rear outboard seats, and a unique LIMITED VIN plate on the leather-wrapped center console lid. When you demand nothing but the best, step up to F-150 LIMITED.

<sup>1</sup>Horsepower and torque ratings based on premium fuel per SAE J1349® standard. Your results may vary.



SuperCrew® interior.  
Camelback two-tone Regency  
leather front and rear seats.

SuperCrew 4x4.  
Agate Black.  
Available equipment.

# LIMITED

4x2 | Standard

4x4 | Available



HIGH-OUTPUT  
3.5L ECOBOOST® V6  
Standard



SUPERCREW®  
5.5' Box



FRONT BUCKET SEATS  
WITH CENTER CONSOLE  
Standard

LIMITED (EQUIPMENT GROUP 900A)  
INCLUDES SELECT LARIAT FEATURES, PLUS:

### MECHANICAL

- 2-speed automatic 4WD system with mechanical lock
- 3.55 electronic-locking rear axle
- 36-gallon extended-range fuel tank
- Tires - 275/45R22 BSW all-season
- Trailer brake controller

### FORD CO-PILOT360™ TECHNOLOGY

- 360-Degree Camera with Split-View Display
- Active Park Assist
- Ford Co-Pilot360 Assist: Adaptive Cruise Control with Stop-and-Go, and Voice-Activated Touchscreen Navigation System with pinch-to-zoom capability (includes SiriusXM® Traffic and Travel Link® with 5-year subscription<sup>1</sup>)
- Rain-Sensing Windshield Wipers
- Reverse Sensing System

### SEATING

- Multicontour front bucket seats with Active Motion®, LIMITED seat back badging, and flow-through center console with lockable storage and 2 rear-facing powerpoints
- Heated rear outboard seats

### INTERIOR

- 110V/400W AC power outlets
- Center console-mounted floor shifter
- Genuine Dark Ash Swirl wood interior trim accents
- Heated steering wheel
- Inflatable rear safety belts in outboard seating positions
- Leather-wrapped shift knob, steering wheel, and center console lid with LIMITED VIN plate
- Metallic door-sill scuff plate inserts with Ice Blue® illuminated LIMITED lettering
- Power-tilt/-telescoping steering column with memory
- Unique gauge cluster face
- Universal garage door opener

### CONNECTIVITY & ENTERTAINMENT

- B&O Sound System with 10 speakers including subwoofer, and HD Radio™ Technology

### EXTERIOR

- Body-color bumpers
- Bright beltline moldings
- Chrome front tow hooks (4x4)
- Chrome LIMITED hood lettering
- Dual exhaust with satin-aluminum tips
- LED fog lamps and taillamps
- LED sideview mirror spotlights with high-intensity LED security approach lamps
- Power-deployable running boards
- Quad-beam LED headlamps
- Rear wheel-well liners
- Remote Start System
- Remote tailgate release
- Satin-aluminum door and tailgate handles, and tailgate appliqué
- Satin-aluminum grille with chrome and silver accents
- Twin-panel moonroof
- Windshield wiper de-icer

### AVAILABLE FEATURES AND PACKAGES:

#### MECHANICAL

- Engine block heater

#### INTERIOR

- Floor liners
- Smoker's Pack with ash cup/coin holder

#### EXTERIOR

- Bed divider<sup>2</sup>
- Bedliner - Plastic drop-in
- Bedliner - Tough Bed® spray-in
- Box side steps
- Front license plate bracket (standard where required)
- Stowable bed extender
- Stowable loading ramps<sup>2</sup>
- Tailgate step with tailgate lift assist
- Tonneau cover - Hard-folding<sup>2,3</sup>
- Tonneau cover - Soft-folding<sup>2,3</sup>
- Toolbox - Aluminum crossbed<sup>2,3</sup>
- Toolbox - Premium aluminum crossbed<sup>2,3</sup>

#### PACKAGES

Capability Packages: content can be found on a dedicated page later in this brochure

<sup>1</sup>Certain restrictions, 3rd-party terms and data rates may apply. See footnote 1 on the "Your Tech, Your Way" pages, and your Ford Dealer for details. <sup>2</sup>Restrictions may apply. See your dealer for details. <sup>3</sup>Ford Licensed Accessory. <sup>4</sup>Additional charge. <sup>5</sup>Metallic.



CAMELBACK TWO-TONE  
REGENCY LEATHER

STAR WHITE METALLIC  
TINTED CLEARCOAT<sup>4</sup>

ICONIC SILVER<sup>5</sup>

RAPID RED METALLIC  
TINTED CLEARCOAT<sup>4</sup>

AGATE BLACK<sup>5</sup>



Twin-panel moonroof.

Leather-wrapped center console lid with unique VIN plate.

SuperCrew 4x4.  
Agate Black.  
Available equipment.

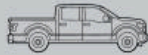


22" Polished Aluminum

4x4 | Standard



HIGH-OUTPUT  
3.5L ECOBOOST® V6  
Standard



SUPERCAB  
5.5' Box

SUPERCREW®  
5.5' Box



FRONT BUCKET SEATS  
WITH CENTER CONSOLE  
Standard

RECARO SPORT  
FRONT BUCKET SEATS  
WITH CENTER CONSOLE  
Available

**THIS TRUCK IS A BEAST** No doubt about it. The Baja-bred RAPTOR includes a Terrain Management System™ with 7 selectable drive modes that allow you to optimize traction to current driving conditions. Trail Control™ plus FOX Racing Shox™ 3.0 internal bypass shocks with electronically controlled Live Valve technology, give it monstrous capability beyond the pavement. With suspension travel of 13" in front and 13.9" in the rear. Lean, mean, and ready to scream, RAPTOR is ready to tackle the toughest terrain.

Inside, available RECARO® sport front seats with enhanced bolstering in the seat back and cushion provide aggressive styling and comfortable support. Bold exterior colors include Rapid Red Metallic Tinted Clearcoat,<sup>1</sup> Ford Performance Blue, Velocity Blue and Lead Foot.

<sup>1</sup>Additional charge. <sup>2</sup>Horsepower and torque ratings based on premium fuel per SAE J1349® standard. Your results may vary.

CLASS-BEST  
**510** LB.-FT.  
TORQUE<sup>2</sup>

CLASS-BEST  
**450** HORSE  
POWER<sup>2</sup>



Interior Color Accent  
Package with RECARO seats  
and Blue Alcantara® inserts.  
Available equipment.

FOX Racing Shox  
shock absorbers.

RAPTOR instrument panel.  
Available equipment.

SuperCrew 4x4.  
Velocity Blue.  
Available equipment.

# RAPTOR

FOX RACING SHOX 3.0 INTERNAL BYPASS SHOCK ABSORBERS

CAST-ALUMINUM LOW-PROFILE RUNNING BOARDS

LEATHER-WRAPPED STEERING WHEEL  
WITH THUMB PADS AND CENTER MARKER

UPFITTER SWITCHES MOUNTED IN OVERHEAD CONSOLE

4.10 ELECTRIC-LOCKING REAR AXLE



# RAPTOR

RAPTOR (EQUIPMENT GROUP 800A)  
INCLUDES SELECT XLT FEATURES, PLUS:

## MECHANICAL

2-speed automatic Torque-On-Demand®  
4WD system with mechanical lock

4.10 electronic-locking rear axle

26-gallon fuel tank (SuperCab)

36-gallon fuel tank (SuperCrew®)

FOX Racing Shox™ 3.0 internal bypass shocks  
with Live Valve technology

Heavy-duty jack

Long-travel front suspension with unique front  
upper and lower control arms and unique tie-rods

Terrain Management System™

Tires – LT315/70R17 BSW all-terrain

Trail Control™

Trailer Tow Package: 4-pin/7-pin wiring harness,  
Class IV trailer hitch receiver, Smart Trailer Tow  
Connector, upgraded front stabilizer bar, and  
trailer hookup lamp

## FORD CO-PILOT360™ TECHNOLOGY

Reverse Sensing System

## SEATING

Front bucket seats with unique seat back bolsters,  
and flow-through center console with lockable  
storage and 2 rear-facing powerpoints

8-way power driver seat and 2-way manual  
front-passenger seat

60/40 split one-touch flip-up rear seat with  
underseat storage (SuperCrew includes folding  
armrest with cupholders)

## INTERIOR

110V/400W AC power outlets

4.2" productivity screen in instrument cluster

Auto-dimming rearview mirror

Center console-mounted floor shifter

Floor liners with RAPTOR logo

Leather-wrapped steering wheel with thumb  
pads, center marker, and audio controls

Metallic door-sill scuff plate inserts with  
FORD PERFORMANCE lettering

Rear window defroster

Upfitter switches (6) mounted in the  
overhead console

Unique instrument panel center stack  
and door-trim appliqué

## CONNECTIVITY & ENTERTAINMENT

7 audio system speakers

SiriusXM® with 6-month All Access  
trial subscription<sup>1</sup>

## EXTERIOR

Air extractors in hood and flared front fenders

BoxLink™ with 4 premium removable  
and lockable cleats

Cast-aluminum low-profile running boards

Dual exhaust with Matte Black tips

Flared pickup box rear fenders

Heavy-duty front and engine skid plates

Integrated clearance lamps

LED taillamps with black housings

Magnetic-painted FORD grille insert  
and surround with black mesh

Quad-beam LED headlamps with black housings

Rear tow hooks

Unique Magnetic-painted bumpers  
and wheel-lip moldings

## AVAILABLE FEATURES AND PACKAGES:

### MECHANICAL

4.10 front axle with TORSEN® differential

Engine block heater

Trailer brake controller

### FORD CO-PILOT360 TECHNOLOGY

360-Degree Camera with Split-View Display<sup>2</sup>

Adaptive Cruise Control with Stop-and-Go  
(only available in 802A)

BLIS® (Blind Spot Information System)  
with Trailer Coverage and Cross-Traffic Alert<sup>2</sup>  
(only available in 801A/802A)

Lane-Keeping System  
(only available in 801A/802A)

Pro Trailer Backup Assist™

Rain-Sensing Windshield Wipers  
(only available in 802A)

Voice-Activated Touchscreen Navigation System<sup>2</sup>  
with pinch-to-zoom capability (includes SiriusXM  
Traffic and Travel Link® with 5-year subscription<sup>1</sup>)

## SEATING

Heated rear outboard seats<sup>2</sup> (SuperCrew)

## INTERIOR

Inflatable rear safety belts in outboard seating  
positions<sup>2</sup> (SuperCrew)

Smoker's Pack with ash cup/coin holder

## EXTERIOR

Bed divider<sup>2</sup>

Bedliner – Plastic drop-in

Bedliner – Tough Bed® spray-in

Front license plate bracket  
(standard where required)

LED cargo box lighting

Manual-folding sideview mirrors with power,  
heated glass, integrated turn signal indicators,  
high-intensity LED security approach lamps  
and LED spotlights<sup>2</sup>

Remote Start System

Stowable bed extender

Stowable loading ramps<sup>2</sup>

Tailgate step with tailgate lift assist

Tonneau cover – Hard-folding<sup>2,3</sup>

Tonneau cover – Soft-folding<sup>2,3</sup>

Toolbox – Aluminum crossbed<sup>2,3</sup>

Toolbox – Premium aluminum crossbed<sup>2,3</sup>

Twin-panel moonroof<sup>2</sup> (SuperCrew)

## EQUIPMENT GROUPS

**Equipment Group 801A:** BLIS (Blind Spot  
Information System) with Trailer Coverage and  
Cross-Traffic Alert + Lane-Keeping System  
+ 8" productivity screen in instrument cluster  
+ 10-way power, heated driver and front-  
passenger seats + Black cloth-/leather-trimmed  
seats with Silver Smoke Metallic accents + power-  
adjustable pedals + power-folding sideview  
mirrors with power, heated glass, memory,  
integrated turn signal indicators, high-intensity  
LED security approach lamps, LED spotlights  
and driver's side auto-dimming feature + power-  
sliding rear window + Magnetic-painted tailgate  
appliqué with FORD lettering<sup>4</sup>

**Equipment Group 802A:** includes all content of  
801A + 4.10 front axle with TORSEN differential  
+ heated and ventilated front seats with memory  
driver's seat + 360-Degree Camera + Adaptive  
Cruise Control with Stop-and-Go + Advanced  
Security Pack (includes SecuriLock® Passive  
Anti-Theft System and inclination/intrusion  
sensors) + Ice Blue® ambient lighting + dual-  
zone electronic automatic temperature control  
+ inflatable rear safety belts in outboard seating  
positions (SuperCrew) + trailer brake controller  
+ LED cargo box lighting + power-adjustable  
pedals with memory + Intelligent Access with  
push-button start + body-color sideview mirror  
caps and door and tailgate handles + power-  
tilt/-telescoping steering column with memory  
+ heated steering wheel + Pro Trailer Backup  
Assist + Remote Start System + remote tailgate  
release + B&O Sound System with HD Radio™  
Technology + universal garage door opener  
+ Voice-Activated Touchscreen Navigation System  
+ windshield wiper de-icer + Rain-Sensing  
Windshield Wipers

## PACKAGES

**Exterior Graphics Package:** box side  
RAPTOR graphics

**Hood Graphics Package**

**RAPTOR Carbon Fiber Package:**<sup>2</sup> High-Gloss  
Black carbon-fiber finish on dash, media bin lid,  
shift knob and door-trim appliqué

**RAPTOR Interior Color Accent Package:**<sup>2</sup>  
aluminum dash panels; High-Gloss Black  
carbon-fiber finish on dash, media bin lid,  
shift knob and door-trim appliqué; and Black  
leather-trimmed RECARO® sport seats with blue  
Alcantara® inserts and blue accent stitching

<sup>1</sup>Certain restrictions, 3rd-party terms and data  
rates may apply. See footnote 1 on the "Your  
Tech, Your Way" pages, and your Ford Dealer for  
details. <sup>2</sup>Restrictions may apply. See your dealer  
for details. <sup>3</sup>Ford Licensed Accessory. <sup>4</sup>Tailgate  
appliqué delete option available. <sup>5</sup>Additional  
charge. <sup>6</sup>Metallic.



17" Cast-Aluminum  
Standard



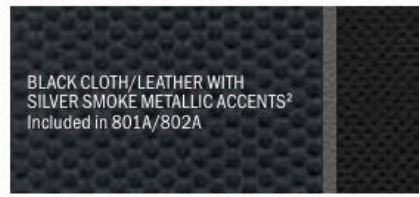
17" Forged Aluminum  
Bead-Lock Capable  
Available



SuperCrew interior.  
Black cloth/leather-trimmed  
seating with Silver Smoke  
Metallic accents.  
Available equipment.



Magnetic-painted  
tailgate appliqué.  
SuperCrew 4x4.  
Velocity Blue.  
Available equipment.



# CAPABILITY PACKAGES

**2.7L ECOBOOST® PAYLOAD PACKAGE<sup>1</sup>** 3.73 electronic-locking rear axle and 9.75" gearset  
*Available: XL, XLT*

**CLASS IV TRAILER HITCH** (towing capability up to 6,000 lbs. with the 3.3L Ti-VCT V6 and 2.7L EcoBoost engines; towing capability up to 7,000 lbs. with the 3.5L EcoBoost, 5.0L V8, and 3.0L diesel engines): 4-pin/7-pin wiring harness, Class IV trailer hitch receiver, and Smart Trailer Tow Connector

*Standard: LARIAT, KING RANCH,® PLATINUM, LIMITED*  
*Available: XL, XLT*

**CNG/PROPANE GASEOUS ENGINE PREP PACKAGE<sup>1</sup>** (requires 5.0L V8 engine): hardened engine intake valves and valve seats, and bi-fuel manifold

*Available: XL, XLT, LARIAT, KING RANCH*

**FX4 OFF-ROAD PACKAGE<sup>1</sup>** (4x4): 3.31 electronic-locking rear axle (5.0L, 3.5L EcoBoost and 3.0L diesel engines) or 3.55 electronic-locking rear axle (2.7L EcoBoost engine), FX4 Off-Road box decals, Hill Descent Control™ off-road-tuned front shock absorbers, floor liners, and skid plates for fuel tank, transfer case and front differential

*Available: XL, XLT, LARIAT, KING RANCH, PLATINUM*

**HEAVY-DUTY PAYLOAD PACKAGE<sup>1</sup>** (3.3L, 5.0L and 3.5L EcoBoost engines): 3.73 electronic-locking rear axle, 9.75" gearset, 36-gallon fuel tank, upgraded springs, and 18" silver heavy-duty aluminum wheels with LT275/65R18C OWL all-terrain tires

*Available: XL, XLT*

**MAX. TRAILER TOW PACKAGE<sup>1</sup>** (required for towing up to 13,200 lbs.; requires 3.5L EcoBoost engine): 3.55 electronic-locking rear axle (3.73 with Heavy-Duty Payload Package), 4-pin/7-pin wiring harness, 36-gallon fuel tank, Class IV trailer hitch receiver, Smart Trailer Tow Connector, trailer brake controller, upgraded front stabilizer bar, upgraded rear bumper, and trailer hookup lamp

*Available: XL*

**MAX. TRAILER TOW PACKAGE WITH PRO TRAILER BACKUP ASSIST™<sup>1</sup>** (required for towing up to 13,200 lbs.; requires 3.5L EcoBoost engine): 3.55 electronic-locking rear axle (3.73 with Heavy-Duty Payload Package), 4-pin/7-pin wiring harness, 36-gallon fuel tank, Class IV trailer hitch receiver, Smart Trailer Tow Connector, trailer brake controller, upgraded front stabilizer bar, upgraded rear bumper, trailer hookup lamp, and Pro Trailer Backup Assist

*Available: XL, XLT, LARIAT, KING RANCH, PLATINUM*

**SNOWPLOW PREP PACKAGE<sup>1</sup>** (4x4; requires 5.0L V8 engine): preselected springs and snowplow mode with dash-mounted button; electronic shift-on-the-fly (ESOF) transfer case replaces standard 2-speed automatic 4WD transfer case on LARIAT

*Available: XL, XLT, LARIAT*

**TRAILER TOW PACKAGE<sup>1</sup>** (required for towing up to 11,500 lbs.): 4-pin/7-pin wiring harness, Class IV trailer hitch receiver, Smart Trailer Tow Connector, upgraded front stabilizer bar, and trailer hookup lamp

*Standard: RAPTOR*

*Available: XL*

**TRAILER TOW PACKAGE WITH PRO TRAILER BACKUP ASSIST<sup>1</sup>** (required for towing up to 11,500 lbs.): 4-pin/7-pin wiring harness, Class IV trailer hitch receiver, Smart Trailer Tow Connector, upgraded front stabilizer bar, trailer hookup lamp, and Pro Trailer Backup Assist

*Available: XL, XLT, LARIAT, KING RANCH, PLATINUM, LIMITED*

<sup>1</sup>Restrictions may apply. See your dealer for details.



XL SuperCab 4x4.  
Magnetic, STX Package.  
FX4 Off-Road Package.  
Available equipment.

**CONVENTIONAL TOWING**

Maximum Loaded Trailer Weight Ratings (lbs.)

Engine	Axle Ratio	GCWR	Regular Cab				SuperCab				SuperCrew®			
			122.4" WB		141.1" WB		145.0" WB		163.7" WB		145.0" WB		156.8" WB	
			4x2	4x4	4x2	4x4	4x2	4x4	4x2	4x4	4x2	4x4	4x2	4x4
3.3L Ti-VCT V6 Gas	3.55	9,600/9,700	5,100/—	—	—/5,100	—	—	—	—	—	—	—	—	
		9,800/9,900 10,000	—	5,000/—	—	—	—	—	—	—	—	—	5,000	
3.3L Ti-VCT V6 Gas	3.73	12,200/12,300 12,400/12,500 12,600	7,700/—	—/7,500	—/7,700	—/7,400	—	—	—	—	—	—	—	
		—	—	—	—	—	—	—	—	—	—	—	7,400/— 7,400	
2.7L EcoBoost® V6 Gas	3.55	12,300/12,500 12,600/12,700 12,800/12,900	7,600/—	—/7,600	7,600/—	—	—	—	—	—	—	—	—	
		—	—	—	—	7,600/—	—/7,700	—	7,500/—	—	—	—	—	
2.7L EcoBoost® V6 Gas	3.73	13,200/13,300 13,400/14,100 14,200/14,300	8,500/—	—/8,400	8,500/—	—/8,300	—/8,300	—/8,000	—/8,200	—	—	—	—	
		—	—	—	—	—	—	—	—	—	—	—	—	
5.0L Ti-VCT V8 Gas	3.15	13,100/14,000 14,200/14,300	8,400/—	—	—/9,200	—	—	—	—	—	—	—	—	
		—	—	—	—	—	—	—	—	—	—	—	—	
5.0L Ti-VCT V8 Gas	3.31	13,100/13,300 14,000/14,200 14,300/14,400	8,400/—	—/8,300	—	—	—	—	—	—	—	—	—	
		—	—	—	—	—	—	—	—	—	—	—	—	
5.0L Ti-VCT V8 Gas	3.55	13,300/13,900 14,200/14,400 14,500/14,600 15,000/15,200 15,300	—/9,200	8,300/—	—	—	—	—	—	—	—	—	—	
		—	—	—	—	—	—	—	—	—	—	—	—	
5.0L Ti-VCT V8 Gas	3.73	14,700/16,000 16,200 16,300 16,600/16,900	9,700/—	—/11,000 <sup>2</sup>	—	—	—	—	—	—	—	—	—	
		—	—	—	—	—	—	—	—	—	—	—	—	
3.5L EcoBoost Gas	3.15	15,500/15,800 15,900	—	—	10,500/—	—	—	—	—	—	—	—	—	
		—	—	—	—	—	—	—	—	—	—	—	—	
3.5L EcoBoost Gas	3.31	15,900/16,100 16,200	—	—	10,600/—	—	—	—	—	—	—	—	—	
		—	—	—	—	—	—	—	—	—	—	—	—	
3.5L EcoBoost Gas	3.55	15,500/15,800 15,900/16,100 16,200 16,700	—	—	10,500/—	—	—	—	—	—	—	—	—	
		—	—	—	—	—	—	—	—	—	—	—	—	
3.5L EcoBoost Gas	3.73	17,000/17,100 17,900/18,200 18,400/18,600	—	—	12,000 <sup>4</sup> /—	—/11,800 <sup>4</sup>	—/11,800 <sup>4</sup>	—/11,500 <sup>4</sup>	—/11,600 <sup>4</sup>	—/11,400 <sup>4</sup>	—	—	—	
		—	—	—	—	—	—	—	—	—	—	—	—	
3.0L Power Stroke® Diesel	3.31	15,700/15,900 16,000/16,100	—	—	—	—	—	—	—	—	—	—	—	
		—	—	—	—	—	—	—	—	—	—	—	—	
3.0L Power Stroke® Diesel	3.55	16,000/16,100 17,100/17,200	—	—	—	—	—	—	—	—	—	—	—	
		—	—	—	—	—	—	—	—	—	—	—	—	

WB = wheelbase <sup>1</sup>Requires 2.7L EcoBoost Payload Package. <sup>2</sup>Requires Heavy-Duty Payload Package. <sup>3</sup>LIMITED only. <sup>4</sup>Requires Max. Trailer Tow Package. <sup>5</sup>LIMITED payload rating is 1,560 lbs.  
**Payload Notes:** Maximum capabilities shown are for properly equipped vehicles with required equipment and a 150-lb. driver. Weight of additional options, equipment, passengers and cargo must be deducted from this weight. For additional information, see your Ford Dealer. **Towing Notes:** Maximum loaded trailer weights shown. Do not exceed trailer weight of 5,000 lbs. when towing with bumper only. The combined weight of the towing vehicle (including options, hitch, passengers and cargo) and the loaded trailer must not exceed the GCWR (Gross Combination Weight Rating). Trailer tongue load weight should be 10-15% of total loaded trailer weight. Make sure that the vehicle payload (reduced by option weight) will accommodate trailer tongue load weight and the weight of passengers and cargo added to the towing vehicle. The addition of trailer tongue load weight, and the weight of passengers and cargo, cannot cause vehicle weights to exceed the rear GAWR (Gross Axle Weight Rating) or GVWR (Gross Vehicle Weight Rating). These ratings can be found on the vehicle's Safety Compliance Certification Label. See the RV and Trailer Towing Guide for requirements, restrictions and 5th-wheel towing.

**PAYLOAD**

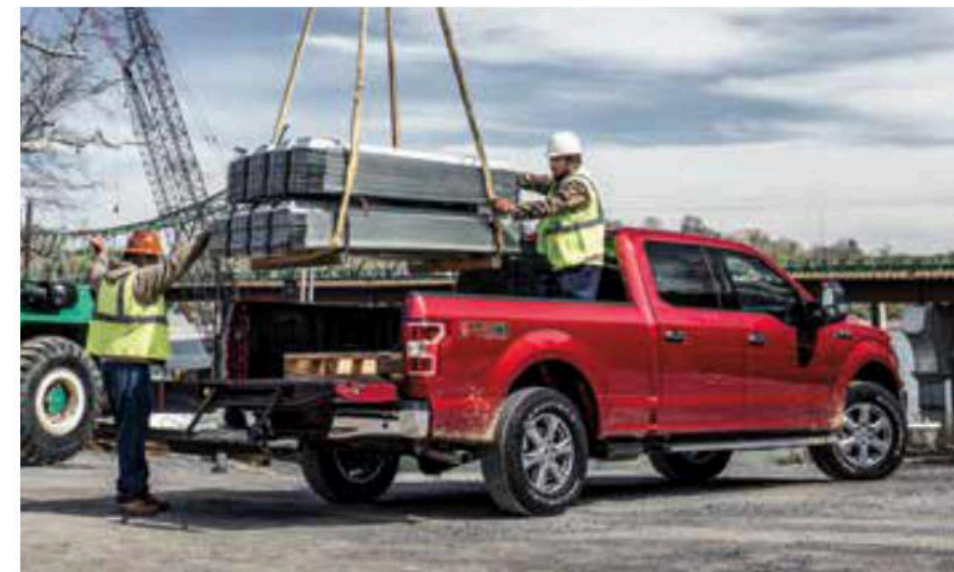
Maximum Payload Weight Ratings (lbs.)

Engine	Drive	Max. GVWR	Regular Cab		SuperCab		SuperCrew	
			122.4" WB	141.1" WB	145.0" WB	163.7" WB	145.0" WB	156.8" WB
3.3L Ti-VCT V6 Gas	4x2	6,100	1,990	—	—	—	—	—
		6,170	—	1,960	—	—	—	—
		6,280	—	—	—	—	—	—
		6,300	—	—	1,840	—	—	1,700
		6,390	—	1,920	—	—	—	—
		6,500	—	—	1,770	—	—	1,680
2.7L EcoBoost V6 Gas	4x2	6,070	1,860	—	—	—	—	—
		6,220	—	1,920	—	—	—	—
		6,360	—	—	—	—	—	1,710
		6,400	—	—	1,840	—	—	—
		6,500	—	—	—	1,800	—	1,820
		6,650	—	—	—	—	1,940 <sup>1</sup>	—
	4x4	6,750	—	—	2,120 <sup>1</sup>	—	—	—
		6,800	—	—	—	—	—	2,060 <sup>1</sup>
		6,900	—	2,470 <sup>1</sup>	—	2,150 <sup>1</sup>	—	—
		6,210	1,720	—	—	—	—	—
		6,500	—	1,920	1,640	—	—	—
		6,600	—	—	—	—	—	1,690
5.0L Ti-VCT V8 Gas	4x2	6,800	—	—	—	—	—	—
		6,900	—	—	—	—	—	2,260
		6,950	—	—	—	—	—	—
		7,000	—	—	—	2,290	—	—
		7,850	—	3,270 <sup>2</sup>	—	3,070 <sup>2</sup>	—	2,930 <sup>2</sup>
		6,400	1,840	—	—	—	—	—
	4x4	6,950	—	—	—	—	—	—
		7,000	—	—	—	2,020	—	2,080
		7,050	—	—	—	—	2,200	—
		7,850	—	3,150 <sup>2</sup>	—	2,760 <sup>2</sup>	—	2,710 <sup>2</sup>
		6,750	—	—	—	—	—	2,050 <sup>5</sup>
		6,900	—	—	—	2,260	—	—
3.5L EcoBoost Gas	4x2	7,000	—	—	—	—	—	2,270
		7,050	—	—	—	—	—	—
		7,850	—	2,640	—	2,250	—	—
		7,850	—	3,230 <sup>2</sup>	—	2,950 <sup>2</sup>	—	2,870 <sup>2</sup>
		6,750	—	—	—	—	—	1,270 <sup>3</sup>
		7,000	—	—	—	—	—	2,050
3.0L Power Stroke Diesel	4x2	7,050	—	—	—	—	—	2,050
		7,050	—	—	—	—	—	2,050
		7,050	—	2,370	2,150	2,050	—	2,050
		7,100	—	3,040 <sup>2</sup>	—	2,730 <sup>2</sup>	—	2,690 <sup>2</sup>

Best-in-class configuration shown bolded and in color.

**DIMENSIONS**

Exterior	Regular Cab 4x2/4x4	SuperCab 4x2/4x4	SuperCrew 4x2/4x4
<b>Height</b>			
5½' box			75.6"/77.2"
6½' box	75.5"/76.9"	75.5"/77.2"	75.7"/77.3"
8' box	75.1"/76.9"	75.5"/77.0"	—
<b>Width</b>			
Excl. mirrors	79.9"	79.9"	79.9"
Incl. standard mirrors	96.8"	96.8"	96.8"
Incl. trailer tow mirrors	105.9"	105.9"	105.9"
Std. mirrors folded	83.5"	83.5"	83.5"
Trailer tow mirrors folded	85.5"	85.5"	85.5"
<b>Length</b>			
5½' box			231.9"
6½' box	209.3"	231.9"	243.7"
8' box	227.9"	250.5"	—
<b>Wheelbase</b>			
5½' box			145.0"
6½' box	122.4"	145.0"	156.8"
8' box	141.1"	163.7"	—
<b>Ground clearance (min.)</b>			
5½' box			8.5"/9.4"
6½' box	8.8"/9.4"	8.7"/9.4"	8.4"/9.3"
8' box	8.6"/9.4"	8.7"/9.3"	—
<b>Cargo Box</b>	<b>5½' Box</b>	<b>6½' Box</b>	<b>8' Box</b>
Volume (cu. ft.)	52.8	62.3	77.4
Inside height	21.4"	21.4"	21.4"
Length at floor	67.1"	78.9"	97.6"
Width at wheelhouse	50.6"	50.6"	50.6"
Maximum width at floor	65.2"	65.2"	65.2"



**MECHANICAL**

<b>Front Suspension</b>	Coil-over-shock Combined rating@ground: 2,850 lbs.-4,050 lbs.
<b>Rear Suspension</b>	Solid axle Combined rating@ground: 3,350 lbs.-4,800 lbs.
<b>Brakes</b>	4-wheel vented-disc with ABS Front rotor diameter: 13.8" Rear rotor diameter: 13.8"

**RAPTOR**

Exterior Dimensions	SuperCab	SuperCrew
Height	78.5"	78.5"
Width		
Excl. mirrors	86.3"	86.3"
Incl. standard mirrors	96.8"	96.8"
Std. mirrors folded	86.3"	86.3"
Length	220.0"	231.9"
Wheelbase	134.2"	146.0"
Ground clearance (min.)	9.9"	9.8"
Approach angle	30.2°	30.2°
Departure angle	23.1°	23.0°
Ramp breakover angle	22.9°	21.8°
Front/rear track	73.9"/73.6"	73.9"/73.6"

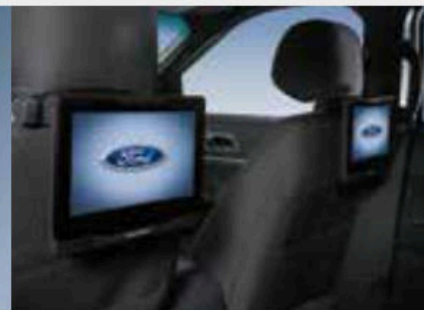
Payload & Towing (lbs.)	SuperCab	SuperCrew
Max. GVWR	6,650	7,050
Max. GCWR	12,050	14,250
Max. Payload	1,000	1,200
Max. Towing	6,000	8,000



XLT SuperCrew® 4x4 in Iconic Silver accessorized with a chrome exhaust tip, premium flat splash guards with stainless steel inserts, step bars, stowable load ramps, spray-in bedliner,<sup>1</sup> hard-folding tonneau cover,<sup>2</sup> side window deflectors,<sup>2</sup> fender flares,<sup>2</sup> rear wheel-well liners, trailer tow mirrors and hood deflector



Dash cam systems<sup>2</sup>



Rear Seat Entertainment (portable)<sup>2</sup>



Floor liners



Drop-in bedliner and bed tailgate liner

**New Vehicle Limited Warranty.** We want your Ford F-150 ownership experience to be the best it can be. Under this warranty, your new vehicle comes with 3-year/36,000-mile bumper-to-bumper coverage, 5-year/60,000-mile Powertrain Warranty coverage, 5-year/60,000-mile safety restraint coverage, 5-year/unlimited-mile corrosion perforation (aluminum panels do not require perforation) coverage, and 5-year/100,000-mile diesel engine coverage (when applicable) – all with no deductible. Please ask your Ford Dealer for a copy of this limited warranty.

**Roadside Assistance.** Covers your vehicle for 5 years or 60,000 miles, so you have the security of knowing that help may be only a phone call away should you run out of fuel, lock yourself out of the vehicle or need a winch back to a paved road, a battery jump start or towing. Your Ford Dealer can provide complete details on all of these advantages.

**Ford Credit.** Get the ride you want. Whether you plan to lease or buy, Ford Credit has the option that's right for you. Ask your Ford Dealer for details or visit us online at [ford.com/finance](http://ford.com/finance).

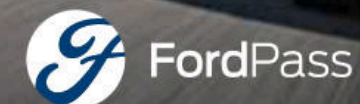
**Ford Protect™ Extended Service Plans.** Whether you purchase or lease your Ford vehicle, insist on genuine Ford Protect extended service plans. Ford Protect has a variety of plans to give you peace-of-mind protection whether you want vehicle component or maintenance coverage. Plus, they are fully backed by Ford and honored at all Ford dealerships in the U.S., Canada and Mexico. When you visit your dealer, insist on genuine Ford Protect extended service plans.

**Ford Original Accessories.** They're warranted for whichever provides you the greatest benefit: 24 months/unlimited mileage, or the remainder of your Bumper-to-Bumper 3-year/36,000-mile New Vehicle Limited Warranty.

**Ford Licensed Accessories (FLA)** are warranted by the accessory manufacturer's warranty. FLA are designed and developed by the accessory manufacturer and have not been designed or tested to Ford Motor Company engineering requirements. Contact your Ford Dealer for details and/or a copy of all limited warranties.

Alcantara is a registered trademark of Alcantara S.p.A., Italy. Amazon, Alexa, and all related logos and marks are trademarks of Amazon.com, Inc. or its affiliates. Apple, Apple CarPlay, Apple Watch and iPhone are trademarks of Apple Inc., registered in the U.S. and other countries. App Store is a service mark of Apple Inc. BANG & OLUFSEN and B&O are registered trademarks of Bang & Olufsen Group. Licensed by Harman Becker Automotive Systems Manufacturing Kft. All rights reserved. BFGoodrich is a registered trademark of Michelin North America, Inc. FOX Racing Shox is a trademark of Fox Factory, Inc. Google, Android, Google Play, Android Auto, Waze and other marks are trademarks of Google LLC. Requires the Android Auto app on Google Play and an Android compatible smartphone running Android™ 5.0 or higher. HD Radio is a proprietary trademark of iBiquity Digital Corporation. KICKER is a registered trademark of Stillwater Designs and Audio, Inc. King Ranch is a registered trademark of King Ranch, Inc. RECARO is a registered trademark of RECARO Beteiligungs-GmbH. SiriusXM and all related marks and logos are trademarks of Sirius XM Radio Inc. Torque-On-Demand is a registered and active trademark of BorgWarner. TORSSEN is a registered trademark of JTEKT Corporation.

Comparisons based on competitive models (class is Full-Size Pickups under 8,500 lbs. GVWR based on Ford segmentation), publicly available information and Ford certification data at time of printing. Vehicles may be shown with optional equipment. Features may be offered only in combination with other options or subject to additional ordering requirements/limitations. Dimensions shown may vary due to optional features and/or production variability. Information is provided on an "as is" basis and could include technical, typographical or other errors. Ford makes no warranties, representations, or guarantees of any kind, express or implied, including but not limited to, accuracy, currency, or completeness, the operation of the information, materials, content, availability, and products. Ford reserves the right to change product specifications, pricing and equipment at any time without incurring obligations. Your Ford Dealer is the best source of the most up-to-date information on Ford vehicles. Colors are representative only. See your dealer for actual paint/trim options.



**BUILT TO KEEP YOU MOVING.™**

The FordPass™ App<sup>3</sup> puts your F-150 owner experience right in the palm of your hand.



COMPLIMENTARY MAINTENANCE

With FordPass Rewards™, you can earn 42,000 Points to use toward complimentary maintenance when you buy or lease a new Ford.<sup>4</sup> Or save your Points for future service, accessories or even your next new vehicle purchase. And when it's time to schedule service, you can do it right from your FordPass App.



REWARDS

In addition to complimentary maintenance, you can easily earn FordPass Rewards Points for many of the things you already do with us, including service and maintenance at participating dealers. Then you can redeem your Points for discounts on service, parts, accessories and new vehicle purchases. Use your app to watch your Points grow and keep track of how you use them.



ROADSIDE ASSISTANCE

With the FordPass App, you can request roadside assistance like fuel delivery, flat-tire repair and more 24/7 anywhere, anytime.<sup>5</sup> Just use your app to call or make an e-request and help is on the way.



CONNECT & CONTROL

Stay connected and in control of your vehicle with complimentary remote features accessed through the FordPass App. Start, stop, lock and unlock your vehicle, schedule a start, even check fuel and fluid levels right from the app.<sup>6</sup> You can also get vehicle health alerts, service history and service alerts to help you keep on top of your vehicle's maintenance.



Download the FordPass app today.

<sup>1</sup>Factory option. See your dealer for details. <sup>2</sup>Ford Licensed Accessory.

<sup>3</sup>FordPass App, compatible with select smartphone platforms, is available via a download. Message and data rates may apply. <sup>4</sup>75,000 points for Diesel owners. Modem must be activated within 60 days of purchase through the FordPass App on a smartphone and remain active for at least 6 months after activation. Buyers of non-modem-equipped vehicles will also receive Points for complimentary maintenance after enrollment. Visit a participating dealer for details. <sup>5</sup>Roadside assistance is included for certain owners and available to everyone for a per-service fee. <sup>6</sup>FordPass Connect™ (optional on select vehicles), the FordPass App, and complimentary Connected Service are required for remote features (see FordPass Terms for details). Connected service and features depend on compatible AT&T network availability. Evolving technology/cellular networks/vehicle capability may limit functionality and prevent operation of connected features. Connected service excludes Wi-Fi hotspot.



From day one, we had the future in mind. And for over 116 years,  
we've focused on improving your freedom of movement,  
by making it possible for hardworking, everyday people to own  
a vehicle. One that's well built. That you're proud to drive.  
Born in Detroit, made in America<sup>1</sup> and famous worldwide:

We are the Ford Motor Company.

Your mobility is at the center of everything we do.

And we're excited to be designing and building smart vehicles  
that work for you. It's why we put our family name on every one.

From our founding members, to our Ford family of employees  
around the globe, we work with pride. We build with care.

For you – and your family. By everyone in ours.

<sup>1</sup>Made in the USA with domestic and foreign parts.