

Go Further



*Ford* 2017 FLEX

# FLEX

MOVES YOU. IN EVERY WAY.



Progressive design that's strikingly unique – and effortlessly cool. Intelligent technologies that help make the most of every drive. And spacious seating for up to 7, with "some of the best, most polished interior space of any three-row crossover SUV," says thecarconnection.com. Plus, EcoBoost® power! A standard rear view camera. And SYNC® 3 enhanced voice-activated technology<sup>1,2</sup> that helps you stay connected to what's important to you. The 2017 Ford Flex combines them all to move you in every way that matters. Go further.

2017 Ford Flex | ford.com

Limited in Ingot Silver with Oxford White roof and available equipment. <sup>1</sup>Available feature. <sup>2</sup>Don't drive while distracted. Use voice-operated systems when possible; don't use handheld devices while driving. Some features may be locked out while the vehicle is in gear. Not all features are compatible with all phones. Message and data rates may apply.





## DELIGHTS. AT THE PUSH OF A BUTTON.

Starting with a touch of the chrome-finished door handle on Flex Limited. As long as your smart key is discreetly tucked away in your pocket or purse, just touch the handle and you're in. Then, press the brake pedal, push the start button – and get moving. It's that easy. Recall comfort on each drive with a 10-way power, leather-trimmed heated driver's seat and power-adjustable pedals, both with memory. At your destination, you can activate the power liftgate any of 4 ways. Just press the button on the liftgate handle, on the instrument panel, on the remote control, or inside the rear cargo area. With bold FLEX lettering on the hood and liftgate, and incredibly helpful features inside, Flex is the space for busy families on the go.

The class-exclusive PowerFold<sup>®1</sup> 3rd-row seat is activated with a button in the rear cargo area. That seat, and either side of the 60/40 split 2nd-row bench seat, can be folded to fit passengers and long cargo items. When 2nd- and 3rd-row seats are folded flat, take advantage of over 83 cu. ft. of cargo space. Behind the 50/50 split 3rd-row seat, Flex offers up to 20 cu. ft.<sup>2</sup> of cargo space thanks to the extra room provided by its deep storage well.

PowerFold 3rd-row<sup>1</sup> seats. Touch down.



# ECOBOOST

PERFORMS. BEYOND EXPECTATIONS.



Get best-in-class<sup>1</sup> V6 horsepower when equipped with the twin-turbocharged, direct-injection, 3.5L EcoBoost<sup>®</sup> engine.<sup>2</sup> Paired with Intelligent all-wheel drive (AWD) and steering wheel-mounted paddle shifters, this 365-hp<sup>3</sup> EcoBoost delivers spirited performance. "No matter the engine speed, goose the throttle and there's power on tap, ready to haul the Flex around," says caranddriver.com.

With its 3.5L Ti-VCT V6 engine, Flex has an EPA-estimated rating of 23 hwy mpg.<sup>4</sup> Twin independent variable camshaft timing helps the standard V6 produce 287 hp. And the standard 6-speed SelectShift<sup>®</sup> automatic transmission allows you to shift for yourself, or leave its fully automatic operation to Flex. An unconventional blend of style, space and smarts, the 2017 Ford Flex is the modern way to move.



Get flexible. 60/40 split-fold seat.



COMFORTS. WITH ROOM FOR UP TO 7. Flex impresses all around. Up front, the 10-way power driver's seat<sup>1</sup> and power-adjustable pedals<sup>1</sup> can both include memory.<sup>1</sup> And there's also a heated steering wheel<sup>1</sup> for added comfort. Passengers in the 2nd and 3rd rows enjoy best-in-class leg room. In that spacious 2nd row, you can choose from a 3-person bench seat or bucket seats<sup>1</sup> with a pass-through to row 3. Plus, all 3 rows can enjoy a view of the sky with the multipanel Vista Roof.<sup>1</sup>

#### SiriusXM Satellite Radio

Listen to everything you love with SiriusXM.<sup>®1,2</sup> Get over 150 channels including all genres of commercial-free music, plus every major sport and the best talk, news, comedy and entertainment. And you'll hear it all with a 6-month trial subscription to the All Access package, included with your new Flex. So you can rock your ride, plus listen anywhere online and on the SiriusXM app.

2017 Ford Flex | ford.com

Limited leather-trimmed interior in Dark Earth Gray with Light Earth Gray perforated inserts, Appearance Package and available equipment. <sup>1</sup>Available feature. <sup>2</sup>SiriusXM audio and data services each require a subscription sold separately, or as a package, by SiriusXM Radio Inc. If you decide to continue service after your trial, the subscription plan you choose will automatically renew thereafter and you will be charged according to your chosen payment method at then-current rates. Fees and taxes apply. To cancel you must call SiriusXM at 1-866-635-2349. See SiriusXM Customer Agreement for complete terms at [www.siriusxm.com](http://www.siriusxm.com). All fees and programming subject to change. Trial subscriptions not available in AK and HI.





### SYNC 3

In addition to all the voice-activated benefits of SYNC<sup>®</sup> – placing and answering calls, and controlling music from your devices – you'll love the easy-to-use interface of SYNC 3.<sup>1,2</sup> An 8" color LCD screen displays phone, audio and navigation<sup>2</sup> features. Enhanced voice recognition lets you give simple commands. A capacitive touchscreen includes a convenient swipe feature, as well as pinch-to-zoom functionality within navigation.<sup>2</sup> SYNC 3 also brings you the options of Apple CarPlay<sup>™</sup><sup>3</sup> and Android Auto.<sup>™</sup><sup>4</sup>

#### Voice-Activated Navigation System<sup>2</sup>

Includes a 5-year complimentary trial subscription to SiriusXM<sup>®</sup> Traffic and Travel Link<sup>®</sup> services.<sup>5</sup> Global Positioning System (GPS) technology is combined with available 3-D mapping and provides voice-guided turn-by-turn directions. You'll get detailed traffic information, plus current and forecasted weather and fuel station locations and prices.

#### SYNC AppLink

Use your voice to control some of your favorite compatible mobile apps (like Pandora<sup>®</sup> and iHeartAuto), thanks to standard SYNC AppLink.<sup>6</sup>

#### Siri Seamless Integration

Bring the power of Siri<sup>®</sup> into Flex with Siri Eyes Free,<sup>7</sup> your paired iPhone<sup>®</sup> and a long press of the voice-recognition button on the steering wheel.

#### Automatic Updates Over Wi-Fi

Keep SYNC 3 current with the latest software as new updates become available.<sup>8</sup> All you need is a Wi-Fi<sup>®</sup> connection.

2017 Ford Flex | ford.com

<sup>1</sup>Don't drive while distracted. Use voice-operated systems when possible; don't use handheld devices while driving. Some features may be locked out while the vehicle is in gear. Not all features are compatible with all phones. Message and data rates may apply. <sup>2</sup>Available feature. <sup>3</sup>Requires phone with compatible version of Apple iOS and active data service. SYNC does not control Apple CarPlay while in use. Apple is solely responsible for their functionality. Message and data rates may apply. <sup>4</sup>Requires phone with compatible version of Android Auto and active data service. SYNC does not control Android Auto while in use. Google and other third parties are responsible for their respective functionality. Message and data rates may apply. <sup>5</sup>SiriusXM audio and data services each require a subscription sold separately, or as a package, by SiriusXM Radio Inc. If you decide to continue service after your trial, the subscription plan you choose will automatically renew thereafter and you will be charged according to your chosen payment method at then-current rates. Fees and taxes apply. To cancel you must call SiriusXM at 1-866-635-2349. See SiriusXM Customer Agreement for complete terms at www.siriusxm.com. All fees and programming subject to change. Trial subscriptions not available in AK and HI. <sup>6</sup>SYNC AppLink is available on select models and compatible with select smartphone platforms and requires any compatible apps to be installed and running on a capable smartphone while connected to SYNC. Commands may vary by phone and AppLink software. Message and data rates may apply. <sup>7</sup>Requires SYNC 3. <sup>8</sup>Optional Navigation System map updates cannot be received via Wi-Fi and require a separate update.





Active park assist! Turn some heads.

## REFINES. THE ROAD.










Using ultrasonic sensors and sophisticated radar, Flex driver-assist technologies<sup>1</sup> help you park, avoid collisions and more. Get a heads-up from adaptive cruise control & forward collision warning with brake support.<sup>1</sup> It helps maintain your choice of speed and preset gaps from the vehicle in front of you and can alert you to a potential collision. If one is detected, it can flash a warning on the windshield, sound an alarm, and can pre-charge the braking system to provide full responsiveness when you do brake.

Make parallel parking easier with class-exclusive active park assist.<sup>1</sup> It not only helps you find a spot, it can actually steer Flex into place as you control the gear shifter, brake and accelerator pedals. Stay alert to traffic detected in blind spots thanks to BLIS<sup>®</sup> (Blind Spot Information System) with cross-traffic alert.<sup>1</sup> It helps warn you using lights embedded in the sideview mirrors.<sup>2</sup>



## EASES. YOUR MIND.

With standards like AdvanceTrac® with RSC® (Roll Stability Control™), which provides enhanced stability in a variety of settings. The system selectively applies individual brakes and modifies engine power to help keep all 4 wheels firmly planted! A standard Safety Canopy® System offers the protection of side-curtain airbags that deploy to cover all 3 rows. Every Flex also comes with front-seat side airbags and the dual-stage front airbags included in our Personal Safety System.™ Intelligent all-wheel drive (AWD)<sup>2</sup> balances torque between the front and rear wheels to enhance handling and maximize traction in a variety of driving conditions. And helpful MyKey® technology allows you to program ignition keys with reminders to drive at appropriate speeds, keep the audio volume low, and more.

MODELS	WHEELS	STANDARD FEATURES
<p><b>SE</b></p> 	 <p>17" Sparkle Silver-Painted Aluminum Standard: SE</p>  <p>18" Sparkle Silver-Painted Aluminum Standard: SEL</p>	<p><b>Mechanical</b>  4-wheel disc Anti-Lock Brake System (ABS)  Battery – 72-amp-hr  Battery Management System  Electric power-assisted steering (EPAS)  Fuel tank – 18.6-gal. capacity  Suspension – Independent front and rear with stabilizer bars</p> <p><b>Driver-Assist Technology</b>  Autolamp  Reverse Sensing System  SYNC<sup>®</sup> Voice Recognition Communications and Entertainment System with 4.2" color LCD screen in center stack, 911 Assist<sup>®</sup>, AppLink<sup>®</sup>, and 1 smart-charging USB port</p> <p><b>Seating</b>  Front – Bucket seats  Rear – 2nd-row 60/40 split fold-flat bench with autofold function on 40 section  Rear – 3rd-row manual fold-in-floor 50/50 split bench seat  4-way adjustable front head restraints</p> <p><b>Interior</b>  Accessory delay for power features  Auxiliary audio input jack  Cabin air filter  Center console – 1st-row with armrest, storage and 2 cupholders  Coat hooks in 2nd row (2)  Cruise control  Cupholders (10)  Flooring – Carpeted floor mats in 1st and 2nd rows  Grab handles – Front-passenger (1) and B-pillar (2)  Grocery bag hooks in cargo area  Illuminated Entry System  Lighting – 1st-, 2nd- and 3rd-row dome/map lights  Locking glove compartment  Locks – Power door with autolock  Map pockets in 1st-row seat backs  Mirror – Auto-dimming rearview  Overhead console with sunglasses holder  Power outlets – 12-volt powerpoints accessible in all rows (4)  Shifter knob – Leather-wrapped</p> <p>Steering column – Manual-tilt/-telescoping  Steering wheel – Leather-wrapped with cruise, audio and 5-way controls  Visors – Driver and front-passenger with illuminated vanity mirrors</p> <p><b>Exterior</b>  Bumpers – Body-color  Easy Fuel<sup>®</sup> capless fuel filler  Exhaust tips – Dual bright  Mirrors – Heated sideview  Rear-window defroster  Roof – Monochromatic  Windows – Privacy glass (rear doors, rear quarter windows and liftgate window)  Wipers – Front: speed-sensitive, variable intermittent with washer; rear: 2-speed with washer</p>
<p><b>SEL</b></p> 	 <p>20" Bright-Painted Aluminum Available: SEL</p>  <p>19" Premium Luster Nickel-Painted Aluminum Standard: Limited</p>	<p><b>Safety &amp; Security</b>  Airbags – Personal Safety System<sup>™</sup> for driver and front passenger includes dual-stage front airbags<sup>2</sup>, safety belt pretensioners, safety belt energy-management retractors, safety belt usage sensors, driver's seat position sensor, crash severity sensor, restraint control module and Front-Passenger Sensing System  Airbags – Front-seat side<sup>3</sup>  Airbags – Safety Canopy<sup>®</sup> System with side-curtain airbags<sup>3</sup> and rollover sensor  3-point safety belts for all seating positions  AdvanceTrac<sup>®</sup> with RSC<sup>®</sup> (Roll Stability Control<sup>™</sup>) and traction control  Belt-Minder<sup>®</sup> front safety belt reminder  Child-safety rear door locks  LATCH – Lower Anchors and Tether Anchors for Children (2 for 2nd row and 1 for 3rd row)  MyKey<sup>®</sup>  Perimeter alarm  Rear view camera  Remote Keyless Entry System with integrated keyhead transmitter remotes (2)  SecuriCode<sup>™</sup> invisible keypad  SecuriLock<sup>®</sup> Passive Anti-Theft System  Side-intrusion door beams  SOS Post-Crash Alert System<sup>™</sup>  Tire Pressure Monitoring System (excludes spare)</p>
<p><b>LIMITED</b></p> 	 <p>20" Polished Aluminum Optional: Limited</p>  <p>20" High-Gloss Black-Painted Aluminum Included: Appearance Package</p>	
<p><b>ENGINES/EPA-ESTIMATED RATINGS<sup>1</sup></b></p>		
<p><b>3.5L Ti-VCT V6</b>  287 hp @ 6,500 rpm  254 lb.-ft. of torque @ 4,000 rpm  6-speed SelectShift<sup>®</sup> automatic with shifter button activation  FWD 16 city/23 hwy/19 combined mpg  AWD 16 city/22 hwy/18 combined mpg</p>	<p><b>3.5L EcoBoost<sup>®</sup> V6</b>  365 hp @ 5,500 rpm<sup>2</sup>  350 lb.-ft. of torque @ 3,500 rpm<sup>2</sup>  6-speed SelectShift automatic with steering wheel-mounted paddle shifters  AWD 15 city/21 hwy/17 combined mpg</p>	

<sup>1</sup>Actual mileage will vary. <sup>2</sup>Horsepower and torque ratings achieved with 93-octane fuel. <sup>3</sup>Always wear your safety belt and secure children in the rear seat.

LIMITED		
SE	SEL	
S	S	Mechanical
	S	3.5L Ti-VCT V6 with 6-speed SelectShift® automatic transmission with shifter button activation
	O	3.5L EcoBoost® V6 engine with 6-speed automatic transmission, SelectShift capability and paddle activation
	S	Brakes – Heavy-duty calipers
S	S	Front-wheel drive (FWD)
	O	Intelligent all-wheel drive (AWD)
		<b>Driver-Assist Technology</b>
	O	Active park assist <sup>1</sup>
	O	Adaptive cruise control & forward collision warning with brake support
	O	BLIS® (Blind Spot Information System) with cross-traffic alert
	S	SYNC® 3 Enhanced Voice Recognition Communications and Entertainment System with 8" color LCD capacitive touchscreen in center stack with swiping capability, 911 Assist,® AppLink,® and 2 smart-charging USB ports
	S	Wipers – Rain-sensing windshield
		<b>Seating</b>
S		Front – 6-way power driver's seat with manual lumbar and recline
	S	Front – 10-way power driver's seat with power lumbar and recline
S		Front – 4-way manual passenger seat
	S	Front – 6-way power passenger seat with manual lumbar and recline
	O	Front – Driver's seat memory feature
	S	Front – Heated
	O	Front – Heated and cooled
	O	Rear – 2nd-row 40/40 reclining bucket seats
	S	Rear – 2nd-row fold-down center armrest with 2 cupholders
	O	Rear – 3rd-row vinyl 50/50 split bench seat with one-touch PowerFold® and tumble with tailgate feature
S	S	Trim – Cloth
	O	Trim – Leather-trimmed
	P	Trim – Leather-trimmed with perforated inserts
		<b>Interior</b>
S	S	AM/FM stereo/single-CD player with MP3 capability and 6 speakers
	S	Audio System from Sony® with HD Radio™ Technology, AM/FM stereo/single-CD player with MP3 capability and 12 speakers
	O	Premium Audio System with 7 speakers
	O	SiriusXM Satellite Radio with 6-month All Access trial subscription
	S	Ambient lighting
	S	Cargo net
S		Climate controls – Single-zone climate control with manual rear auxiliary; includes 2nd- and 3rd-row adjustable vents
	S	Climate controls – Dual-zone electronic automatic temperature control with manual rear auxiliary; includes 2nd- and 3rd-row adjustable vents
S	S	Door-sill scuff plates – Front, Black
	S	Door-sill scuff plates – Front, chrome with aluminum inserts
	O	Dual Headrest DVD by INVISION™ <sup>2</sup>
	O	Flooring – 1st- and 2nd-row all-weather floor mats

LIMITED		
SE	SEL	
	S	Ignition – Intelligent Access with push-button start
	S	Ignition – Remote Start System
	O	Power-adjustable pedals with memory
	O	Power outlet – 110-volt/150-watt AC
	P	Steering wheel – Color-keyed leather-wrapped with Meteorite Black bezels
	S	Steering wheel – Color-keyed leather-wrapped with wood inlay
	O	Steering wheel – Heated
S		Trim – Embossed metal instrument panel appliques
	S	Trim – San Macassar wood-appearance appliques on instrument panel and door-trim panels
	P	Trim – Unique finish instrument panel and door-trim panels
	S	Trim – Yoho maple woodgrain-appearance appliques on instrument panel and door-trim panels
	S	Universal garage door opener
	O	Voice-activated Navigation System with pinch-to-zoom capability, and integrated SiriusXM® Traffic and Travel Link® with 5-year subscription
S		Windows – Power with one-touch-up/-down driver's side feature
	S	Windows – Power with front one-touch-up/-down feature
		<b>Exterior</b>
S	P	Beltline moldings – Black
	S	Beltline moldings – Bright stainless
S		Door handles – Body-color
	S	Door handles – Chrome
	S	Fog lamps with bright bezels
S	S	Grille – Chrome
	S	Grille – Satin aluminum upper and Kast Silver lower
	P	Grille – Shadow Black center bar
S	S	Headlamps – Halogen projector
	S	Headlamps – High-intensity discharge (HID)
S	S	Liftgate – Manual
	O	Liftgate – Power
S	S	Liftgate – Body-color appliqué
	S	Liftgate – Satin aluminum appliqué
	P	Liftgate – Shadow Black appliqué

LIMITED		
SE	SEL	
S	S	Mirrors – Black, power, heated, manually folding sideview with integrated blind spot mirrors
	S	Mirrors – Body-color, power, heated, power-folding sideview with integrated security approach lamps and memory
	O	Moonroof – Multipanel Vista Roof®
	O	Roof – Ingot Silver
	O	Roof – Oxford White
	P	Roof – Shadow Black
O		Roof rack – Black side rails
	P	Roof rack – Shadow Black side rails
	O	Roof rack – Silver side rails
	S	Taillamps – LED
		<b>Safety &amp; Security</b>
O	O	2nd-row outboard inflatable safety belts <sup>3</sup>
		<b>Equipment Groups &amp; Packages</b>
	O	<b>Equipment Group 202A</b> – Includes 110-volt/150-watt AC power outlet + power liftgate + power-adjustable pedals with memory + BLIS (Blind Spot Information System) with cross-traffic alert + 1st- and 2nd-row leather-trimmed seating with memory driver seat + sideview mirrors with memory and security approach lamps + Premium Audio System with 7 speakers
	O	<b>Equipment Group 301A</b> – Active park assist <sup>1</sup> + adaptive cruise control & forward collision warning with brake support + 10-way power, heated and cooled front seats + 3rd-row 50/50 split bench with one-touch PowerFold and tumble with tailgate feature + heated steering wheel + power-tilt/-telescoping steering column
	O	<b>Equipment Group 303A</b> – Includes all content of 301A + 3.5L EcoBoost V6 engine + Intelligent all-wheel drive + 20" polished aluminum wheels
	O	<b>Appearance Package</b> includes Shadow Black-painted roof (monochromatic roof available), grille center bar, hood badge, liftgate appliqué, and sideview mirror caps; Black beltline moldings; 20" high-gloss black-painted aluminum wheels; Dark Earth Gray leather-trimmed seating with Light Earth Gray perforated inserts; leather-wrapped steering wheel with Meteorite Black bezels; unique instrument panel and door-trim appliques; and 1st-row floor mats with unique logo
	O	<b>Class III Trailer Tow Package</b> includes class III hitch receiver with 4,500-lb. rating, 7-/4-pin wiring harness, engine oil cooler and trailer sway control

**DIMENSIONS**

Exterior	Interior	1st/2nd/3rd Row	Capacities (cu. ft.)	
Wheelbase	Head room	41.8"/40.5"/38.7"	Passenger volume	155.8
Length	Leg room	42.6" (max.)/44.3"/33.3"	Cargo volume behind 1st row	83.2
Height – Excluding options	Hip room	55.5"/55.0"/41.1"	Cargo volume behind 2nd row	43.2
Height – Including options	Shoulder room	58.4"/58.1"/50.8"	Cargo volume behind 3rd row <sup>4</sup>	20.0
Width – Excluding mirrors			Fuel tank (gal.)	18.6
Width – Including mirrors			Max. towing (lbs.) <sup>5</sup>	4,500
Width – Mirrors folded				

<sup>1</sup>The active park assist activation button replaces one 12-volt powerpoint. <sup>2</sup>Ford Licensed Accessory. <sup>3</sup>Always wear your safety belt and secure children in the rear seat. <sup>4</sup>Includes 5.0-cu.-ft. rear cargo storage well. <sup>5</sup>Maximum weight shown is for properly equipped vehicle with required equipment and a 150-lb. driver. Weight of additional options, equipment, passengers and cargo must be deducted from this weight. For additional information, see your Ford Dealer.

EXTERIOR & INTERIOR CHOICES

Exterior				CONTRASTING-TONE ROOF <sup>1</sup>		
	SE	SEL	LIMITED			
White Platinum Metallic Tri-coat <sup>2,3</sup>		3 4 5 6 7	7 8 9		●	
Oxford White <sup>3</sup>	1 2	3 4 5 6 7	7 8 9	●	●	
Ingot Silver <sup>3,4</sup>	1 2	3 4 5 6 7	7 8 9	○	●	
White Gold <sup>4</sup>		3 4 5 6 7	7 8 9	○	●	
Ruby Red Metallic Tinted Clearcoat <sup>2,3</sup>		3 4 5 6 7	7 8 9	○	●	
Burgundy Velvet Metallic Tinted Clearcoat <sup>2,3</sup>		3 4 5 6 7	7 8 9	●	●	
Blue Jeans <sup>4</sup>	1 2	3 4 5 6 7	7 8 9	●	●	
Magnetic <sup>3,4</sup>	1 2	3 4 5 6 7	7 8 9	○	●	
Shadow Black	1 2	3 4 5 6 7	7 8 9	●		



○ Oxford White roof  
White Gold lower



● Ingot Silver roof  
Blue Jeans lower



● Shadow Black roof  
Ingot Silver lower



White Platinum Metallic Tri-coat



Oxford White



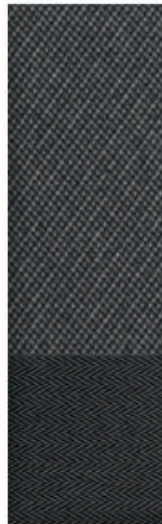
Ingot Silver



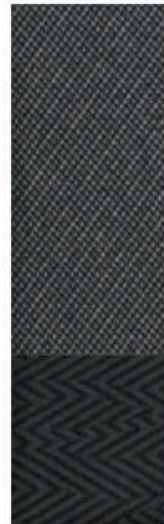
White Gold



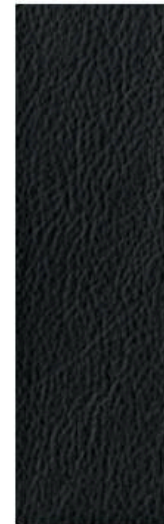
Ruby Red Metallic Tinted Clearcoat



Charcoal Black Cloth



Charcoal Black Cloth



Charcoal Black Leather



Dune Leather with Perforated Inserts



Burgundy Velvet Metallic Tinted Clearcoat



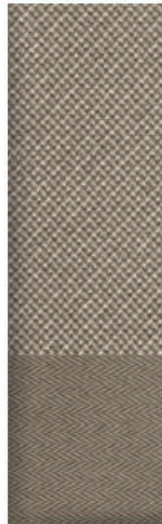
Blue Jeans



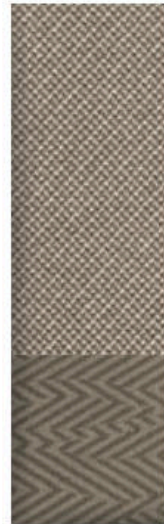
Magnetic



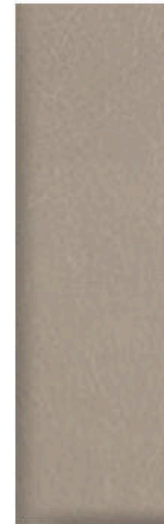
Shadow Black



Dune Cloth



Dune Cloth



Dune Leather



Dark Earth Gray Leather with Light Earth Gray Perforated Inserts



Charcoal Black Leather with Perforated Inserts

Colors are representative only. See your dealer for actual paint/trim options. <sup>1</sup>Contrasting two-tone roof available on SEL and Limited only. <sup>2</sup>Additional charge. <sup>3</sup>Shadow Black roof requires Appearance Package. <sup>4</sup>Metallic.



## FORD ACCESSORIES



SEL in Ruby Red Metallic Tinted Clearcoat accessorized with smoked hood deflector, side window deflectors by EGR, rear spoiler, front molded splash guards, roof side rails, plus roof crossbars and roof-mounted cargo box by THULE<sup>®1,2</sup>

### Exterior

- Full vehicle cover<sup>1</sup>
- Hood deflector
- Locking fuel plug
- Racks and carriers<sup>1</sup>
- Rear spoiler (A)
- Roof side rails
- Side window deflectors<sup>1</sup>
- Splash guards
- Sportz<sup>®</sup> tent<sup>1</sup>
- Trailer towing accessories
- Wheel lock kits

### Interior

- All-weather floor mats (B)
- Ash cup/coin holders
- Cargo organizers and protectors
- Carpeted floor mats
- Conversation mirror
- Door-sill plates
- First aid and roadside assistance kits<sup>1</sup>
- Interior light kit
- Leather-trimmed interior seating<sup>1</sup>
- Protective seat covers<sup>1</sup>
- Tablet cradle<sup>1</sup>

### Electronics

- Dual headrest DVD<sup>1</sup> (C)
- Remote Access (D)
- Remote start systems
- Vehicle Security System
- Warning Sensor System<sup>1</sup>

accessories.ford.com

**New Vehicle Limited Warranty.** We want your Ford Flex ownership experience to be the best it can be. Under this warranty, your new vehicle comes with 3-year/36,000-mile bumper-to-bumper coverage, 5-year/60,000-mile Powertrain Warranty coverage, 5-year/60,000-mile safety restraint coverage, and 5-year/unlimited-mile corrosion (perforation) coverage – all with no deductible. Please ask your Ford Dealer for a copy of this limited warranty.

**Roadside Assistance.** Covers your vehicle for 5 years or 60,000 miles, so you have the security of knowing that help may be only a phone call away should you run out of fuel, lock yourself out of the vehicle or need towing. Your Ford Dealer can provide complete details on all of these advantages.

**Ford Credit.** Get the ride you want. Whether you plan to lease or finance, you'll find the choices that are right for you at Ford Credit. Ask your Ford Dealer for details or check us out at [fordcredit.com](http://fordcredit.com).

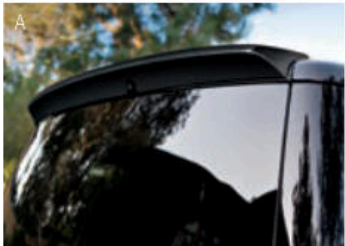
**Ford Protect Extended Service Plans.** Whether you purchase or lease your Ford vehicle, insist on genuine Ford Protect extended service plans. Ford Protect has a variety of plans to give you peace-of-mind protection whether you want vehicle component or maintenance coverage. Plus, they are fully backed by Ford and honored at all Ford dealerships in the U.S., Canada and Mexico. When you visit your dealer, insist on genuine Ford Protect extended service plans.

**Insurance Services.** Get Ford Motor Company quality in your auto insurance. Our program offers industry-leading benefits and competitive rates. Call 1-877-367-3847, or visit us at [fordvip.com](http://fordvip.com) for a no-obligation quote. Insurance offered by American Road Services Company (in CA, American Road Insurance Agency), a licensed agency and subsidiary of Ford Motor Company.

**Ford Original Accessories.** They're warranted for whichever provides you the greatest benefit: 24 months/unlimited mileage, or the remainder of your Bumper-to-Bumper 3-year/36,000-mile New Vehicle Limited Warranty. Ford Licensed Accessories (FLA) are warranted by the accessory manufacturer's warranty. FLA are designed and developed by the accessory manufacturer and have not been designed or tested to Ford Motor Company engineering requirements. Contact your Ford Dealer for details and/or a copy of all limited warranties.

Android Auto, Google, Google Play and other marks are trademarks of Google Inc. Apple, Apple CarPlay, iPhone and Siri are trademarks of Apple Inc., registered in the U.S. and other countries. "HD Radio" and the HD Radio logo are proprietary trademarks of iBiquity Digital Corporation. INVISION is a trademark of VOXX International Corporation. PANDORA, the PANDORA logo, and the Pandora trade dress are trademarks or registered trademarks of Pandora Media, Inc. Used with permission. SiriusXM audio and data services each require a subscription sold separately, or as a package, by Sirius XM Radio Inc. If you decide to continue service after your trial, the subscription plan you choose will automatically renew thereafter and you will be charged according to your chosen payment method at then-current rates. Fees and taxes apply. To cancel you must call SiriusXM at 1-866-635-2349. See SiriusXM Customer Agreement for complete terms at [www.siriusxm.com](http://www.siriusxm.com). All fees and programming subject to change. Trial subscriptions not available in AK and HI. Sirius, XM and all related marks and logos are trademarks of Sirius XM Radio Inc. Sony is a registered trademark of the Sony Corporation. THULE is a registered trademark of Thule Sweden AB. Wi-Fi<sup>®</sup> is a registered trademark of the Wi-Fi Alliance<sup>®</sup>

Comparisons based on competitive models (class is Large Utilities based on Ford segmentation), publicly available information and Ford certification data at time of release. Vehicles may be shown with optional equipment. Features may be offered only in combination with other options or subject to additional ordering requirements/limitations. Dimensions shown may vary due to optional features and/or production variability. Information is provided on an "as is" basis and could include technical, typographical or other errors. Ford makes no warranties, representations, or guarantees of any kind, express or implied, including but not limited to, accuracy, currency, or completeness, the operation of the information, materials, content, availability, and products. Ford reserves the right to change product specifications, pricing and equipment at any time without incurring obligations. Your Ford Dealer is the best source of the most up-to-date information on Ford vehicles.



<sup>1</sup>Ford Licensed Accessory. <sup>2</sup>Consult owner's manual for details on roof-rack load limits.