

2021 FORD

MUSTANG[®]



THERE'S NO POWER LIKE PONY POWER.

All models shown with available equipment (front to back):

MACH 1 PREMIUM. Fighter Jet Gray. Available Appearance Package.

SHELBY® GT500®. Antimatter™ Blue Metallic. Available Carbon Fiber Track Pack.

GT PREMIUM CONVERTIBLE. Race Red.

ECOBOOST® PREMIUM. Twister Orange Metallic Tri-coat.¹ Available High Performance Package.



Open roads. Closed tracks. Drag strips and long straightaways. This legendary icon devours them all. A high-revving celebration of American muscle, the Ford Mustang® is meant to be driven. Hard. Through the chicanes and blind corners of the nation's premier road courses to any twisty stretch of blacktop near you. 56 years of Pony power brings us these heart-pounding choices. The Mustang EcoBoost model with the available 2.3L High Performance Package sports the most powerful 4-cylinder engine from any domestic automaker. Next up, the hard-charging Mustang GT model. A new, limited-edition 2021 Mustang Mach 1 model returns with performance upgrades that invite you to attack any track with confidence. And the Shelby GT500 model stands alone as the most powerful street-legal Ford Mustang.² Ever. So buckle up for the ride of your life. From this stable, 2021 will move at breathtaking speed.

Cover: **MACH 1 PREMIUM.** Fighter Jet Gray. Available Appearance Package. Closed track. Line-lock is intended for track use only. It should not be used on public roads. See owner's manual for information on use. Vehicle imagery throughout this brochure may be computer-generated and may include available and aftermarket equipment.

1. Additional charge. **2.** Horsepower and torque ratings based on premium fuel per SAE J1349[®] standard. Your results may vary. Horsepower and torque are independent attributes and may not be achieved simultaneously.

MACH 1 BY THE NUMBERS

480 HORSEPOWER¹

420 LB.-FT. OF TORQUE¹

A RETURN TO MACH SPEED.

Faster than you can say "sonic boom," the limited-edition Ford Mustang® Mach 1 will pin you to your seat and get you *anywhere* in a hurry. The pinnacle of 5.0L V8 Mustang performance, Mach 1 with the available Mach 1 Handling Package² is born of decades of heritage, as well as lessons learned from the Shelby® GT350® and Shelby GT500® models. The Mach 1 5.0L V8 is paired with a TREMEC® 6-speed manual transmission, now with Rev Matching, and a short-throw shifter. A uniquely crafted grille design helps the monster V8 keep its cool. Mach 1 aerodynamics are enhanced by a front splitter and a robust new underbelly pan, which optimizes airflow beneath the car. The available Handling Package features a higher-downforce front splitter, low-gloss Magnetic Performance rear spoiler with Gurney flap, adjustable strut top mounts, Michelin® Pilot® Sport Cup 2 tires, and revised chassis tuning. A 10-speed automatic, with upgraded torque converter and unique powertrain calibration, is available on Mach 1 for the first time ever. Limited edition means they'll go fast. Get yours before you're left in the rear view.

MACH 1. Grabber Yellow. Available equipment.

¹ Horsepower and torque ratings based on premium fuel per SAE J1349® standard. Your results may vary. Horsepower and torque are independent attributes and may not be achieved simultaneously. ² Available spring 2021.

DUAL EXHAUST WITH QUAD TIPS
MAGNERIDE® DAMPING SYSTEM
BREMBO™ 6-PISTON FRONT BRAKE CALIPERS



STANDARD ON EVERY FORD MUSTANG®

MECHANICAL

6-speed manual transmission
Electronic line-lock (track use only)
Fixed front strut-top mounts
Launch control (manual transmission only)
Selectable-effort electric power-assisted steering (Normal, Sport, Comfort)
Suspension - Front: MacPherson strut with stabilizer bar; rear: independent integral link with stabilizer bar
Tire inflator and sealant kit

COMFORT & CONVENIENCE

FordPass™ Connect² with 4G LTE Wi-Fi hotspot capability³
Illuminated visor mirrors
Intelligent Access with push-button start
Power windows with global open and front one-touch-up/-down feature
Track Apps™ located in instrument cluster

APPEARANCE

LED headlamps with signature lighting, and LED taillamps with sequential tri-bar turn signals
Variable-intermittent windshield wipers

FORD CO-PILOT360™ TECHNOLOGY⁴

Autolamp (Automatic On/Off Headlamps) with Wiper Activation
Ford Co-Pilot360: Auto High-Beam Headlamps, BLIS® (Blind Spot Information System) with Cross-Traffic Alert, Lane-Keeping System, Pre-Collision Assist with Pedestrian Detection and Automatic Emergency Braking (AEB), and Rear View Camera
Rain-Sensing Windshield Wipers

SAFETY & SECURITY

Personal Safety System™ with dual-stage front airbags⁵
Driver's knee, glove-box-door-integrated knee, and front-seat side airbags⁵
Side-curtain airbags⁵ (fastback only)
AdvanceTrac® electronic stability control
Belt-Minder® front safety belt reminder
Enhanced Security Package (standard on convertible): Active Anti-Theft System, electronic-locking center console, electronic steering column lock, and wheel locks
Individual Tire Pressure Monitoring System (TPMS; excludes available spare)
MyKey® technology
SecuriLock® Passive Anti-Theft System

1. Horsepower and torque ratings based on premium fuel per SAE J1349® standard. Your results may vary. Horsepower and torque are independent attributes and may not be achieved simultaneously. **2.** FordPass Connect, the FordPass App, and complimentary Connected Service are required for remote features (see FordPass Terms for details). Connected service and features depend on compatible AT&T network availability. Evolving technology/cellular networks/vehicle capability may limit functionality and prevent operation of connected features. Connected service excludes Wi-Fi hotspot. FordPass App, compatible with select smartphone platforms, is available via download. Message and data rates may apply. **3.** Wi-Fi hotspot includes complimentary wireless data trial that begins upon AT&T activation and expires at the end of 3 months or when 3GB of data is used, whichever comes first, but cannot extend beyond the complimentary subscription period for remote features. To activate, go to www.att.com/ford. **4.** Driver-assist features are supplemental and do not replace the driver's attention, judgment and need to control the vehicle. It does not replace safe driving. See owner's manual for details and limitations. **5.** Always wear your safety belt and secure children in the rear seat. **6.** Additional charge.

TORQUE (LB.-FT.)¹
HORSEPOWER¹

2.3L ECOBOOST®

Standard on EcoBoost and EcoBoost Premium

310

2.3L HIGH PERFORMANCE ECOBOOST

Included with available 2.3L High Performance Package on EcoBoost and EcoBoost Premium

330

5.0L Ti-VCT V8

Standard on GT and GT Premium

460

420

350

350

GT PREMIUM. Rapid Red Metallic Tinted Clearcoat® Available Black Accent Package. Available equipment. Closed track. Line-lock is intended for track use only. It should not be used on public roads. See owner's manual for information on use.

EPA-ESTIMATED
FUEL ECONOMY
RATINGS
ACTUAL MILEAGE
WILL VARY.

2.3L ECOBOOST 6-speed manual: 21 city/29 hwy/24 combined mpg; 6-speed manual (convertible): 20 city/27 hwy/23 combined mpg; 10-speed SelectShift® automatic: 21 city/32 hwy/25 combined mpg; 10-speed SelectShift automatic (convertible): 20 city/28 hwy/23 combined mpg

2.3L HIGH PERFORMANCE ECOBOOST 6-speed manual: 20 city/27 hwy/22 combined mpg; 6-speed manual (convertible): 19 city/25 hwy/21 combined mpg; 10-speed SelectShift automatic: 20 city/27 hwy/23 combined mpg; 10-speed SelectShift automatic (convertible): 19 city/26 hwy/22 combined mpg

5.0L Ti-VCT V8 6-speed manual: 15 city/24 hwy/18 combined mpg; 6-speed manual (convertible): 15 city/24 hwy/18 combined mpg; 10-speed SelectShift automatic: 15 city/24 hwy/19 combined mpg; 10-speed SelectShift automatic (convertible): 15 city/23 hwy/18 combined mpg; 6-speed manual (Mach 1): 14 city/22 hwy/17 combined mpg; 10-speed SelectShift automatic (Mach 1): 15 city/23 hwy/18 combined mpg

INTERIOR DIMENSIONS (front row)

- Head room 37.6"
- Leg room (max.) 45.1"
- Hip room 54.9"
- Shoulder room 56.3"

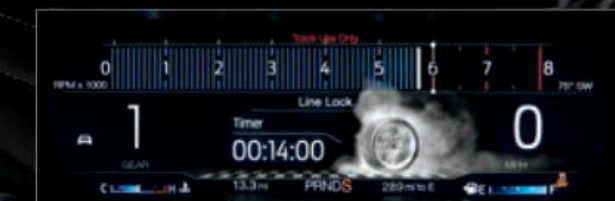


DESIGN YOUR DISPLAY.

Personalize your Ford Mustang® as often as you like with the available customizable 12" color LCD instrument cluster. Through the Pony button on the steering wheel, you decide what's displayed; any combination of 1 to 3 virtual gauges (choose from 8); Exhaust mode; Track Apps;™ a Performance Shift Indicator (3 types with configurable rpm); launch control; and more. Enhance it further with MyColor.® Set your primary, secondary and ambient lighting colors. The cluster, like everything else, is oh-so responsive.



MUSTANG TRACK APPS¹



LIGHT 'EM UP. At the track. In the cluster. With standard line-lock, you can "heat up" the Mustang rear tires. As they smoke outside, you'll see them smokin' here as well.



NO STOPWATCH NEEDED. With the Lap Timer, record your time and average speed at 3 separate tracks. Store up to 100 sessions (a session is 25 laps) in Track Mode.



1,320 FEET OF EXHILARATION. Start your launch with the iconic "Christmas tree." 3-2-1. Gone! The Acceleration Timer shows you how quickly you reach the ¼ mile.



AVAILABLE HEATED STEERING WHEEL

AVAILABLE RECARO® SPORT LEATHER-TRIMMED SEATS

AVAILABLE HEATED FRONT SEATS AND SIDEVIEW MIRRORS

THIS CABIN ROCKS. Starting with an available B&O™ Sound System that sends 1,000 watts of digitally processed sound through 12 high-performance speakers, plus a trunk-mounted subwoofer. Steering column: tilts and telescopes to better fit your needs. Even the placement of the short-throw gear shifter of the 6-speed transmission allows for open access to controls. Like the toggle switches for the available Selectable Drive Modes and Active Valve Performance Exhaust System. Steering wheel-mounted controls for the available digital instrument cluster. And so much more. Designed and engineered to optimize your connection to the road – Mustang also heightens your enjoyment of it.

MACH 1 PREMIUM. Ebony leather-trimmed seating. Available equipment.
¹ For track use only. Not to be used under any other driving conditions. May void your vehicle's limited warranty. See your warranty booklet for details.

COMMAND THE ROAD

WITH FORD CO-PILOT360™ TECHNOLOGY.



FORD CO-PILOT360

FROM THE DRIVEWAY TO THE HIGHWAY, we can all use more confidence at the wheel. That's why Ford Mustang® offers an extensive, well-rounded collection of standard and available driver-assist technologies. These advanced features are about supplementing your driving skills.¹ Helping you feel confidently in command.

- AUTO HIGH-BEAM HEADLAMPS
- BLIS® (BLIND SPOT INFORMATION SYSTEM) WITH CROSS-TRAFFIC ALERT
- LANE-KEEPING SYSTEM

These smart standards can help you with staying in your lane,² changing lanes, backing up and more. In doing so, they help make driving more enjoyable:

- PRE-COLLISION ASSIST WITH AUTOMATIC EMERGENCY BRAKING
- REAR VIEW CAMERA

FORD SAFE & SMART™ PACKAGE

From navigating stop-and-go traffic to finding your way with ease, get help from these available features:

- ADAPTIVE CRUISE CONTROL
- VOICE-ACTIVATED TOUCHSCREEN NAVIGATION SYSTEM

GT PREMIUM CONVERTIBLE. Iconic Silver Metallic. Available California Special Package. Available equipment.

1. Driver-assist features are supplemental and do not replace the driver's attention, judgment and need to control the vehicle. It does not replace safe driving. See owner's manual for details and limitations. **2.** Lane-Keeping System does not control steering.

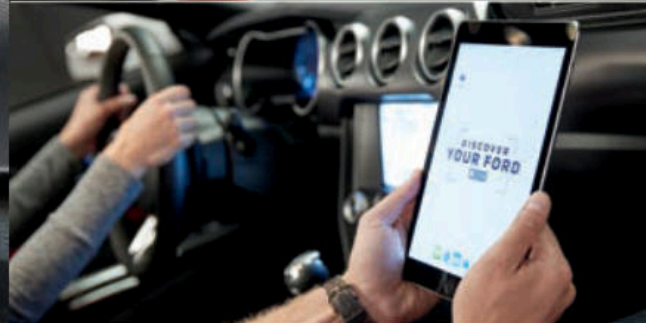


FAST CONNECTIVITY. LIKE EVERYTHING ELSE ABOUT THIS PONY.

Keep your eyes on the road, and your hands on the wheel, with available SYNC³.¹ With its sleek, user-friendly interface, SYNC 3 is more than the ability to make phone calls and play your favorite music – it's about making connectivity fast, smart and simple. Our easy-to-use, voice-activated technology also has an 8" LCD capacitive touchscreen.



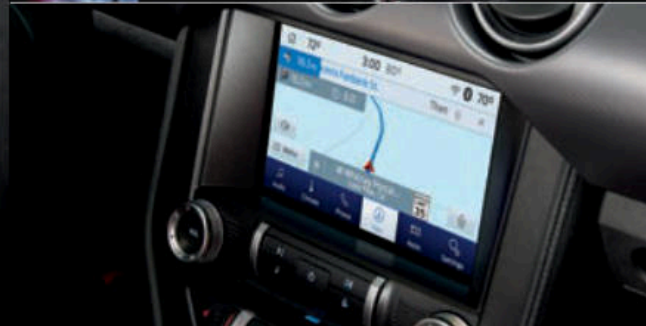
PUT CONTROL IN THE PALM OF YOUR HAND. Start,² stop, lock and unlock your Ford Mustang[®] from your smartphone with FordPass[™] Connect and the FordPass App.³



STREAM YOUR CONTENT. You – and your pit crew – can connect up to 10 devices at once, inside the vehicle or up to 50' feet away – with 4G LTE Wi-Fi hotspot capability⁴ and FordPass Connect.³



COMMAND YOUR APPS. Use voice commands to control favorite apps on your paired smartphone or other mobile devices with SYNC AppLink.⁵



FOLLOW ITS LEAD. Get information on traffic delays, alternate route suggestions, weather conditions, gas stations and more⁶ with the available Navigation System.



CHANGE IT UP. Enjoy available compatibility with Apple CarPlay^{®7} for your iPhone[®] or Android Auto^{™7} for your Android[™] smartphone.

GT PREMIUM. Available Equipment Group 401A. Available equipment.

1. Don't drive while distracted or while using handheld devices. Use voice-operated systems when possible. Some features may be locked out while the vehicle is in gear. Not all features are compatible with all phones. **2.** Automatic transmission only. **3.** FordPass Connect, the FordPass App, and complimentary Connected Service are required for remote features (see FordPass Terms for details). Connected service and features depend on compatible AT&T network availability. Evolving technology/cellular networks/vehicle capability may limit functionality and prevent operation of connected features. Connected service excludes Wi-Fi hotspot. FordPass App, compatible with select smartphone platforms, is available via download. Message and data rates may apply. **4.** Wi-Fi hotspot includes complimentary wireless data trial that begins upon AT&T activation and expires at the end of 3 months or when 3GB of data is used, whichever comes first, but cannot extend beyond the complimentary subscription period for remote features. To activate, go to www.att.com/ford. **5.** Commands may vary by phone and AppLink software. **6.** Requires active SiriusXM[®] services subscription. **7.** Requires phone with active data service and compatible software. SYNC 3 does not control 3rd-party products while in use. 3rd parties are solely responsible for their respective functionality.

ECOBOOST



6-SPEED MANUAL TRANSMISSION
INDEPENDENT REAR SUSPENSION
FORDPASS™ CONNECT



19" x 8.5"
Polished Aluminum
[Optional]



17"
Sparkle Silver-Painted Aluminum
[Standard]



18" x 8"
Machined-Face Aluminum with
Low-Gloss Ebony Black-Painted
Pockets
[Optional]



18" x 8"
Machined-Face Aluminum with
High-Gloss Ebony Black-Painted
Pockets
[Available]

2.3L ECOBOOST I-4 FASTBACK OR CONVERTIBLE

ECOBOOST INCLUDES STANDARD FEATURES, PLUS:

- 6-speed manual transmission
- 3.31 limited-slip rear differential
- 12.6" vented disc brakes with 2-piston front calipers
- SYNC® Voice Recognition Communications System with 4.2" LCD screen, 911 Assist,® AppLink,® and 2 smart-charging USB ports
- 4-way manually adjustable driver and 2-way manually adjustable front-passenger seats
- Cloth seats
- AM/FM stereo with 6 speakers
- Carbon Zag instrument panel trim
- Dual exhaust with bright rolled tips

OPTIONS & PACKAGES ECOBOOST/ECOBOOST PREMIUM

Equipment Group 101A: 18" machined-face aluminum wheels with high-gloss Ebony Black-painted pockets, SYNC 3, 9-speaker audio system, Selectable Drive Modes with 4-gang toggle switch pack, SiriusXM® with 3-month trial subscription,² 6-way power driver seat and 4-way power front-passenger seat, dual-zone electronic automatic temperature control, Remote Start System (requires automatic), and Reverse Sensing System

Enhanced Security Package³ (standard on convertible): Active Anti-Theft System, electronic-locking center console, electronic steering column lock, and wheel locks

Ford Safe and Smart™ Package:³ Adaptive Cruise Control, and Voice-Activated Touchscreen Navigation System with pinch-to-zoom capability (includes SiriusXM Traffic and Travel Link® with 5-year subscription²)

10-speed SelectShift® automatic transmission with steering wheel-mounted paddle shifters (shifters included with 101A), 3.15 limited-slip rear differential, Remote Start System (included with 101A), and leather-wrapped shifter

Active Valve Performance Exhaust System with Quiet Start including quad exhaust tips³

Compact spare wheel and tire³

Engine block heater

Over-the-top racing stripes³

Premium floor liners

Spoiler delete³

Stripe delete (includes body-color sideview mirror caps; requires 2.3L High Performance Package)

TURBOCHARGED TENACITY. Down to the very last detail, you can custom-fit the way you drive with the Ford Mustang® EcoBoost® model. That includes some serious swagger with the available 2.3L High Performance Package that includes a 2.3L EcoBoost tuned by Ford Performance to deliver 330 horsepower¹ and 350 lb.-ft. of torque! Choose sleek fastback or drop-top convertible. Try and pick a favorite among 9 different wheel choices, from standard 17" Sparkle Silver-painted aluminum to the 19" machined-face aluminum rims with low-gloss Ebony Black-painted pockets included with the available 2.3L High Performance Package. Also included is the Active Valve Performance Exhaust System, which even lets you customize your exhaust note. Want more thrills? Add the available Handling Package. Outside, inside, and under the hood, there are countless ways to make Mustang EcoBoost your own.

1. Horsepower and torque ratings based on premium fuel per SAE J1349® standard. Your results may vary. Horsepower and torque are independent attributes and may not be achieved simultaneously. **2.** Trial length and service availability may vary by model, model year or trim. All SiriusXM Services require a subscription, each sold separately by SiriusXM after the trial period. Service will automatically stop at the end of your trial unless a subscription is purchased. See the SiriusXM Customer Agreement at www.siriusxm.com for complete terms. Some services and features are subject to device capabilities and location availability. All fees, content and features are subject to change. **3.** Restrictions may apply. See your dealer for details.

ECOBOOST PREMIUM



SELECTABLE DRIVE MODES WITH TOGGLE SWITCHES
 SYNC® 3 WITH 8" LCD TOUCHSCREEN
 PONY PROJECTION LAMPS

PERSONALIZE IT. PREMIUM-STYLE. The Ford Mustang® EcoBoost® Premium model delivers mightily on performance. Choose the smooth-shifting available 10-speed SelectShift® automatic with steering wheel-mounted paddle shifters. Or the fun-to-pedal 6-speed manual. 9 available packages include the 2.3L High Performance Package and EcoBoost Handling Package that can turn EcoBoost Premium into a bona fide decathlete. Style? That's covered as well. Consider 4 available instrument panel trim choices. Pick from a range of available options, including RECARO® sport leather-trimmed seats, "over-the-top" racing stripes, and 20" premium painted aluminum wheels. With EcoBoost Premium, the power to make it your Mustang is capably in your hands.

1. Restrictions may apply. See your dealer for details. **2.** Requires phone with active data service and compatible software. SYNC 3 does not control 3rd-party products while in use. 3rd parties are solely responsible for their respective functionality. **3.** Trial length and service availability may vary by model, model year or trim. All SiriusXM Services require a subscription, each sold separately by SiriusXM after the trial period. Service will automatically stop at the end of your trial unless a subscription is purchased. See the SiriusXM Customer Agreement at www.siriusxm.com for complete terms. Some services and features are subject to device capabilities and location availability. All fees, content and features are subject to change.



18" x 8"
 Machined-Face Aluminum with High-Gloss Ebony Black-Painted Pockets¹
 [Standard]



19" x 8.5"
 Polished Aluminum¹
 [Optional]



20" x 9"
 Premium Painted Aluminum¹
 [Optional]



2.3L ECOBOOST I-4 FASTBACK OR CONVERTIBLE

ECOBOOST PREMIUM INCLUDES SELECT ECOBOOST FEATURES, PLUS:

- Selectable Drive Modes with 4-gang toggle switch pack (Normal, Sport+, Track, Drag Strip, Snow/Wet)
- SYNC 3 with 8" LCD capacitive touchscreen, 911 Assist,[®] AppLink,[®] Apple CarPlay[®] and Android Auto[™] compatibility² and 2 smart-charging USB ports
- Reverse Sensing System
- 6-way power driver seat with power lumbar and 4-way power front-passenger seat
- ActiveX[™] Seating Material seats
- AM/FM stereo with 9 speakers and amplifier
- SiriusXM[®] with 3-month trial subscription³
- Aluminum accelerator, brake and clutch pedals
- Ambient lighting with MyColor[®]
- Angled Brush aluminum instrument panel trim

- Bright-finish door speaker surrounds
- Dual-zone electronic automatic temperature control
- Heated sideview mirrors
- Illuminated door-sill scuff plates
- Premium door trim including soft rollover
- LED fog lamps
- Decklid spoiler
- Pony projection lamps

OPTIONS & PACKAGES INCLUDES ECOBOOST OPTIONS AND PACKAGES, PLUS:

- RECARO sport leather-trimmed front seats¹
- B&O[™] Sound System with single-CD player, 12 speakers and subwoofer, plus HD Radio[™] Technology

ECOBOOST® + ECOBOOST PREMIUM AVAILABLE PACKAGES

2.3L HIGH PERFORMANCE PACKAGE ECOBOOST/ECOBOOST PREMIUM



[Standard]



[Optional]

INCLUDES 2.3L HIGH PERFORMANCE ECOBOOST I-4 ENGINE

- 19" x 9" machined-face aluminum wheels with low-gloss Ebony Black-painted pockets and 255/40R19 summer-only tires¹
- 19" x 9" front and 19" x 9.5" rear Luster Nickel-painted forged-aluminum wheels² (Optional)
- Unique grille with tri-bar Pony badge
- Active Valve Performance Exhaust System
- GT Performance Package front splitter and belly pan
- Carbonized Gray-painted sideview mirror caps
- Hood accent stripes
- Larger radiator
- Upsized rear sway bar
- Unique front springs
- Unique chassis tuning
- Larger brake rotors with 6-piston front calipers
- Unique electric power-assisted steering (EPAS), ABS, and electronic stability control tuning
- Black-painted strut-tower brace
- Engine Spun aluminum instrument panel trim
- Gauge Pack (oil pressure and boost)
- Carbonized Gray-painted raised blade-style decklid spoiler (fastback), or spoiler delete (convertible)
- 3.55 limited-slip rear differential



BLACK ACCENT PACKAGE ECOBOOST/ECOBOOST PREMIUM



- 19" x 8.5" Ebony Black-painted aluminum wheels
- Black-painted roof,² sideview mirror caps, badging and decklid spoiler



CARBON SPORT INTERIOR PACKAGE ECOBOOST PREMIUM

- Alcantara® seat and door-trim inserts
- Carbon fiber instrument panel trim and shift knob



ECOBOOST HANDLING PACKAGE ECOBOOST/ECOBOOST PREMIUM (FASTBACK ONLY)



- 19" x 9.5" Magnetic-painted aluminum wheels with 265/40R19 Pirelli™ Corsa4 summer-only tires¹
- MagneRide® Damping System
- 3.55 TORSEN® limited-slip rear differential
- Requires 2.3L High Performance Package



WHEEL & STRIPE PACKAGE ECOBOOST/ECOBOOST PREMIUM



- 19" x 8.5" machined-face aluminum wheels with Tarnish Dark-painted pockets
- Hood and side stripes



PONY PACKAGE ECOBOOST PREMIUM



- 19" x 8.5" polished aluminum wheels
- Unique Pony grille, side stripes, tri-bar Pony badge
- Bright beltline moldings and window surrounds (fastback)
- Premium carpeted front floor mats with embroidered Pony logo in Ebony



EQUIPMENT GROUP 201A ECOBOOST PREMIUM

- 12" configurable LCD digital instrument cluster with MyColor®
- Heated steering wheel
- Ford Safe and Smart™ Package
- Premier Trim with Color Accent Group: color-accented leather-trimmed front seats, instrument panel trim and unique door-trim inserts; Linked Graphite aluminum instrument panel trim; wrapped center console and knee bolsters with color accent stitching; shift boot with accent stitching; and stitched center console lid
- Memory feature for ambient lighting, driver's seat, and sideview mirrors with integrated turn signal indicators
- Universal garage door opener



1. Ford does not recommend using summer tires when temperatures drop to approximately 45°F or below (depending on tire wear and environmental conditions), or in snow/ice conditions. If the vehicle must be driven in these conditions, Ford recommends using all-season or snow tires. 2. Restrictions may apply. See your dealer for details.

GT



6-SPEED MANUAL WITH REV MATCHING AND TWIN-DISC CLUTCH
 BODY-COLOR, RAISED BLADE-STYLE DECKLID SPOILER
 DUAL EXHAUST WITH QUAD TIPS



18" x 8"
 Machined-Face Aluminum with
 High-Gloss Ebony Black-Painted
 Pockets⁴
 [Standard]



18" x 8"
 Machined-Face Aluminum with
 Low-Gloss Ebony Black-Painted
 Pockets⁴
 [Optional]

5.0L Ti-VCT V8 FASTBACK

GT INCLUDES STANDARD FEATURES, PLUS:

- 6-speed manual transmission with dual-mass flywheel, twin-disc clutch, and Rev Matching
- 3.55 limited-slip rear differential
- Larger brake rotors with 4-piston front calipers
- Engine oil cooler
- SYNC[®] Voice Recognition Communications System with 4.2" LCD screen, 911 Assist[®], AppLink[®], and 2 smart-charging USB ports
- Reverse Sensing System
- 6-way power driver seat with power lumbar and 4-way power front-passenger seat
- Cloth seats
- Silver Arrow aluminum instrument panel trim
- Dual exhaust with quad tips
- LED fog lamps
- Raised blade-style decklid spoiler
- Unique high-gloss black-painted grille
- Unique rear valance
- Universal garage door opener

OPTIONS & PACKAGES GT/GT PREMIUM

Equipment Group 301A: SYNC 3, 9-speaker audio system, Selectable Drive Modes with 4-gang toggle switch pack, SiriusXM[®] with 3-month trial subscription,³ dual-zone electronic automatic temperature control, and ambient lighting with MyColor[®]

Enhanced Security Package⁴ (standard on convertible): Active Anti-Theft System, electronic-locking center console, electronic steering column lock, and wheel locks

Ford Safe and Smart[™] Package⁴: Adaptive Cruise Control, and Voice-Activated Touchscreen Navigation System with pinch-to-zoom capability (includes SiriusXM Traffic and Travel Link[®] with 5-year subscription³)

10-speed SelectShift[®] automatic transmission with steering wheel-mounted paddle shifters, 3.15 limited-slip rear differential, Remote Start System, and leather-wrapped shifter

3.55 limited-slip rear differential (requires automatic)⁴

Active Valve Performance Exhaust System with Quiet Start

Compact spare wheel and tire⁴

Engine block heater

MagneRide[®] Damping System⁴

Over-the-top racing stripes⁴

Premium floor liners

Spoiler delete⁴

READY TO ROAR. They'll know you're coming. And when you leave them in your dust. That wicked 5.0L V8 acceleration rumble defines the Ford Mustang[®] GT model. There's nothing quite like it. You can even keep that signature sound to a minimum with available Quiet Start – when heading out at 5 a.m., for instance – to keep you in good graces with the neighbors. This high-revving V8 features a dual-injection system and plasma transferred wire arc (PTWA) spray-bore cylinder-lining technology to deliver 460 horsepower¹ along with 420 lb.-ft. of torque! That's only the beginning of its charm. Passionate performance from this iconic fastback includes hitting the 0-60 mark in under 4 seconds.² A 4-wheel, fully independent suspension delivers excellent road feel and precise handling. You'll enjoy making this beast howl. Every chance you get.

1. Horsepower and torque ratings based on premium fuel per SAE J1349[®] standard. Your results may vary. Horsepower and torque are independent attributes and may not be achieved simultaneously. **2.** Mustang GT with available GT Performance Package, available 10-speed automatic and Drag Strip mode. Figures based on internal Ford test data. **3.** Trial length and service availability may vary by model, model year or trim. All SiriusXM Services require a subscription, each sold separately by SiriusXM after the trial period. Service will automatically stop at the end of your trial unless a subscription is purchased. See the SiriusXM Customer Agreement at www.siriusxm.com for complete terms. Some services and features are subject to device capabilities and location availability. All fees, content and features are subject to change. **4.** Restrictions may apply. See your dealer for details.

GT PREMIUM



ALUMINUM FOOT PEDALS
HEATED AND COOLED, LEATHER-TRIMMED FRONT SEATS
AMBIENT LIGHTING WITH MYCOLOR®



5.0L Ti-VCT V8 FASTBACK OR CONVERTIBLE

GT PREMIUM INCLUDES SELECT GT FEATURES, PLUS:

Selectable Drive Modes with 4-gang toggle switch pack (Normal, Sport+, Track, Drag Strip, Snow/Wet)
SYNC® 3 with 8" LCD capacitive touchscreen, 911 Assist,¹ AppLink,² Apple CarPlay³ and Android Auto™ compatibility,¹ and 2 smart-charging USB ports
Leather-trimmed front seats
Heated and cooled front seats
AM/FM stereo with 9 speakers and amplifier
SiriusXM® with 3-month All Access trial subscription²
Aluminum accelerator, brake and clutch pedals
Ambient lighting with MyColor
Angled Brush aluminum instrument panel trim
Bright-finish door speaker surrounds
Dual-zone electronic automatic temperature control
Heated sideview mirrors
Illuminated door-sill scuff plates
Premium door trim including soft rollover
Pony projection lamps

OPTIONS & PACKAGES

INCLUDES GT OPTIONS, PLUS:

RECARO® sport leather-trimmed front seats³
B&O™ Sound System with single-CD player, 12 speakers and subwoofer, plus HD Radio™ Technology



18" x 8"
Machined-Face Aluminum with High-Gloss Ebony Black-Painted Pockets³
[Standard]



19" x 8.5"
Polished Aluminum³
[Optional]



20" x 9"
Premium Painted Aluminum³
[Optional]

PREMIUM GT PERFORMANCE. With the available GT Performance Package, you'll get Brembo™ 6-piston front calipers with larger brake rotors, a TORSEN® limited-slip differential, an oil pressure and vacuum Gauge Pack, heavy-duty front springs, an engine compartment K-brace, unique chassis tuning, an upsized rear sway bar, and so much more. Inside, Premium models add an Angled Brush aluminum instrument panel finish, leather-trimmed front seats, aluminum foot pedals, illuminated door-sill scuff plates, SYNC® 3 and SiriusXM.[®] Interior upgrades include an available heated steering wheel, available accent-color stitching on the seats, instrument panel, center console lid, wrapped knee bolsters and shifter boot, and more.

1. Requires phone with active data service and compatible software. SYNC 3 does not control 3rd-party products while in use. 3rd parties are solely responsible for their respective functionality. **2.** Trial length and service availability may vary by model, model year or trim. All SiriusXM Services require a subscription, each sold separately by SiriusXM after the trial period. Service will automatically stop at the end of your trial unless a subscription is purchased. See the SiriusXM Customer Agreement at www.siriusxm.com for complete terms. Some services and features are subject to device capabilities and location availability. All fees, content and features are subject to change. **3.** Restrictions may apply. See your dealer for details.

GT + GT PREMIUM AVAILABLE PACKAGES

BLACK ACCENT PACKAGE GT/GT PREMIUM



- 19" x 8.5" Ebony Black-painted aluminum wheels
- Black-painted roof,¹ sideview mirror caps, badging and decklid spoiler



EQUIPMENT GROUP 401A GT PREMIUM

- 12" configurable LCD digital instrument cluster with MyColor®
- Heated steering wheel
- Ford Safe and Smart™ Package
- **Premier Trim with Color Accent Group:** color-accented leather-trimmed front seats, instrument panel trim and unique door-trim inserts; Linked Graphite aluminum instrument panel trim; wrapped center console and knee bolsters with color accent stitching; shift boot with accent stitching; and stitched center console lid
- Memory feature for ambient lighting, driver's seat, and sideview mirrors with integrated turn signal indicators



CALIFORNIA SPECIAL PACKAGE GT PREMIUM



- 19" x 8.5" machined-face aluminum wheels with high-gloss Ebony Black-painted pockets
- Unique grille with tri-bar Pony badge
- GT Performance Package front air splitter
- Pedestal-style decklid spoiler
- Mid-body side stripes
- Side scoops
- Miko® sueded cloth door-trim inserts with red stitching
- Ebony leather-trimmed seats with Miko sueded cloth inserts and red stitching
- Premium carpeted front floor mats with California Special script and red stitching
- Unique California Special badging



CARBON SPORT INTERIOR PACKAGE GT PREMIUM

- Alcantara® seat and door-trim inserts
- Carbon fiber instrument panel trim and shift knob



GT PERFORMANCE PACKAGE GT/GT PREMIUM



[Standard]



[Optional]

- 19" x 9" front and 19" x 9.5" rear Ebony Black-painted aluminum wheels with 255/40R19 front and 275/40R19 rear summer-only tires²
- 19" x 9" front and 19" x 9.5" rear Luster Nickel-painted forged-aluminum wheels¹ (Optional)
- Unique front air splitter
- Black-painted strut-tower brace
- Larger radiator
- Upsized rear sway bar
- Heavy-duty front springs
- Unique chassis tuning
- K-member brace
- Brembo™ 6-piston front calipers
- Performance rear wing spoiler (fastback only)
- Unique electric power-assisted steering (EPAS), ABS, and electronic stability control tuning
- Engine Spun aluminum instrument panel trim
- Gauge Pack (oil pressure and vacuum)
- 3.73 (manual)/3.55 (automatic) TORSEN® limited-slip rear differential



1. Restrictions may apply. See your dealer for details. 2. Ford does not recommend using summer tires when temperatures drop to approximately 45°F or below (depending on tire wear and environmental conditions), or in snow/ice conditions. If the vehicle must be driven in these conditions, Ford recommends using all-season or snow tires.

EXTERIORS



AVAILABLE STRIPES



WHEEL & STRIPE PACKAGE

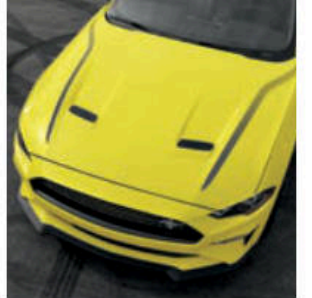
Silver Stripes 1, 3-9
Ebony Stripes 2-10



CALIFORNIA SPECIAL PACKAGE

Silver Stripes 1
Ebony Stripes 2-4, 6

2.3L HIGH PERFORMANCE PACKAGE HOOD ACCENT STRIPES



Silver Stripes 7
Metallic Gray Stripes 1-6, 8-10



PONY PACKAGE

White Stripes 1, 4-10
Ebony Stripes 2-10

OVER-THE-TOP RACING STRIPES



White Stripes 1, 2, 4-10

Ebony Stripes 2-10

INTERIORS



AVAILABLE INTERIORS



Colors are representative only. See your dealer for actual paint/trim options.
1. Additional charge. 2. ActiveX™ Seating Material on EcoBoost Premium; leather on GT Premium. 3. Available RECARO® seat shown.

MACH 1 + MACH 1 PREMIUM



SILVER-PAINTED STRUT-TOWER BRACE WITH MACH 1 BADGE
TREMEC® 6-SPEED MANUAL WITH REV MATCHING
UNIQUE CHASSIS TUNING



BREAK THE STYLE BARRIER. With a deep 3-D mesh, shark-nosed grille section like the 1960s original, the bold, muscular style of the all-new, limited-edition Ford Mustang® Mach 1 celebrates a heritage of speed and performance that dates back over 5 decades. A low-gloss Magnetic Pony badge centers that grille, with the same color accenting the sideview mirror caps and rear spoiler. The sporty look continues inside with a Dark Spindrift instrument panel trim, illuminated door-sill scuff plates, white cue ball shift knob, and engraved badging on the instrument panel that displays each vehicle's unique chassis number. For the ultimate Mach 1, the available Mach 1 Appearance Package features exclusive Fighter Jet Gray exterior paint, Orange brake calipers, Black side and hood stripes with Orange accents, and Ebony leather-trimmed front seats with Orange accent stripes. Grab the keys and get gone!

1. Ford does not recommend using summer tires when temperatures drop to approximately 45°F or below (depending on tire wear and environmental conditions), or in snow/ice conditions. If the vehicle must be driven in these conditions, Ford recommends using all-season or snow tires. 2. Available spring 2021. Limited availability. 3. Restrictions may apply. See your dealer for details.

MACH 1 5.0L Ti-VCT V8 FASTBACK

MACH 1 INCLUDES SELECT GT 301A FEATURES, PLUS:

- TREMEC TR-3160 6-speed manual transmission with Rev Matching
- 255/40R19 front and 275/40R19 rear Michelin® Pilot® Sport Cup 2 summer-only tires¹
- 3.73 TORSEN® limited-slip rear differential
- Active Valve Performance Exhaust System with revised tuning and dual exhaust with quad tips
- Black-painted brake calipers
- Brembo™ vented front disc brakes with 6-piston calipers
- Engine oil, transmission and differential coolers
- Gauge Pack (oil pressure and vacuum)
- Heavy-duty front springs
- K-member brace
- MagneRide® Damping System
- Open Air Induction System (AIS)
- Revised Powertrain Control Module (PCM) calibrations
- Silver-painted strut-tower brace with Mach 1 badge

- Unique chassis tuning
- Unique electric power-assisted steering (EPAS), ABS, and electronic stability control tuning
- Unique intake manifold and throttle body
- Upsized rear sway bar
- 12" configurable LCD digital instrument cluster with MyColor®
- Universal garage door opener
- Heated sideview mirrors with integrated turn signal indicators and Pony projection lamps
- Hood and side stripes
- Mach 1 illuminated door-sill scuff plates
- Performance rear spoiler
- White cue ball shift knob
- Unique front and rear lower fascias
- Unique upper grille with Pony badge

MACH 1 PREMIUM INCLUDES SELECT MACH 1 FEATURES, PLUS:

- Aluminum accelerator, brake and clutch pedals
- Heated and cooled front seats
- Heated steering wheel
- Memory feature for ambient lighting, driver's seat, and sideview mirrors

Premier Trim with Color Accent Group: color-accented leather-trimmed front seats, instrument panel trim, stitched center console lid and unique door-trim inserts; Dark Spindrift aluminum instrument panel trim; wrapped center console and knee bolsters with color accent stitching; and shift boot with accent stitching

PACKAGES

HANDLING PACKAGE² MACH 1/MACH 1 PREMIUM

- Available with 6-speed manual or optional 10-speed SelectShift® automatic transmission
- 19" x 10.5" front and 19" x 11" rear Tarnish Dark-painted aluminum wheels with 305/30R19 front and 315/30R19 rear tires
- Adjustable strut top mounts
- Performance rear spoiler with Gurney flap
- Performance front aero splitter
- Revised chassis tuning



APPEARANCE PACKAGE MACH 1 PREMIUM

- Exclusive Fighter Jet Gray exterior paint
- Ebony interior with unique Orange front-seat accents³
- Orange-painted brake calipers
- Black and Orange hood and side stripes

ELITE PACKAGE MACH 1 PREMIUM

- B&O™ Sound System with single-CD player, 12 speakers and subwoofer, plus HD Radio™ Technology
- Enhanced Security Package



OPTIONS

- 10-speed SelectShift automatic transmission with steering wheel-mounted paddle shifters, 3.55 TORSEN limited-slip rear differential, Remote Start System, and leather-wrapped shifter
- Enhanced Security Package³
- RECARO® sport 4-way manually adjustable driver and 2-way manually adjustable front-passenger seats in Ebony leather trim³
- RECARO sport cloth seats³
- Red-painted brake calipers
- Voice-Activated Touchscreen Navigation System



19" x 9.5" front
19" x 10.0" rear
Tarnish Dark-Painted
Low-Gloss Aluminum
[Standard]



19" x 9.5" front
19" x 10.0" rear
Magnetic-Painted Aluminum
[Optional]

SHELBY® GT500®



SHELBY EXCLUSIVE ALUMINUM INSTRUMENT PANEL TRIM
SHELBY EXCLUSIVE INTERIOR TRIM
AVAILABLE CARBON FIBER TRACK PACK¹

VENOMOUS. The most powerful street-legal Ford Mustang® Ever. 760 horses² and 670 lb.-ft. of torque.² The Shelby GT500 model is capable of accelerating from 0-100 mph and back to 0 in 10.6 seconds.³ It achieves an astounding 550 lbs. of rear downforce at 180 mph when equipped with the available Carbon Fiber Track Pack and adjustable rear wing set to Track. Everything about this snake speaks to an inner fury, starting with the hand-built 5.2L cross-plane crank V8 and its 2.65L Eaton supercharger. To handle all that torque, a computer-controlled TREMEC® 7-speed dual-clutch automatic transmission delivers high power and torque transfer, plus smart powertrain controls. A muscular hood with a massive louvered vent extracts air quickly for exceptional downforce and improved cooling. Self-centering pins help keep the composite hood locked down tight. Aerodynamically advanced, track-ready, and spitting venom, the Shelby GT500 model is engineered to dominate whatever crosses its path.

¹ Restrictions may apply. See your dealer for details. ² Horsepower and torque ratings based on premium fuel per SAE J1349® standard. Your results may vary. Horsepower and torque are independent attributes and may not be achieved simultaneously. ³ Based on manufacturer testing using Track Mode and using premium fuel per SAE J1349 standard. Your results may vary. ⁴ Ford does not recommend using summer tires when temperatures drop to approximately 45°F or below (depending on tire wear and environmental conditions), or in snow/ice conditions. If the vehicle must be driven in these conditions, Ford recommends using all-season or snow tires. ⁵ Limited availability.

5.2L SUPERCHARGED CROSS-PLANE CRANK V8 FASTBACK 7-SPEED TREMEC DUAL-CLUTCH AUTOMATIC TRANSMISSION

SHELBY GT500 INCLUDES SELECT MACH 1 FEATURES, PLUS:

Larger front radiator block-off plate
Magnesium tower-to-tower brace
6-way power-adjustable front sport seats in Ebony leather trim with Miko® sueded cloth inserts
Heated and cooled front seats

Leather- and Alcantara® wrapped flat-bottom steering wheel with paddle shifters
Remote Start System
Rotary gear shift dial
Shelby exclusive aluminum instrument panel trim

Shelby Exclusive Trim Pack
Unique front fascia, fenders, grille and front splitter
Unique hood with self-centering hood pins
Unique rear valance
Universal garage door opener

PACKAGES

TECHNOLOGY PACKAGE

- BLIS® (Blind Spot Information System) with Cross-Traffic Alert; and Voice-Activated Touchscreen Navigation System
- B&O™ Sound System with 12 speakers and subwoofer, plus HD Radio™ Technology
- Driver's seat memory
- Heated sideview mirrors with integrated turn signal indicators, Cobra® projection lamps, and driver's side memory

HANDLING PACKAGE

- Adjustable strut top mounts
- Oil catch can
- Gurney flap
- Splitter wickers¹

CARBON FIBER TRACK PACK



- 20" x 11.0" front and 20" x 11.5" rear exposed carbon fiber wheels with 305/30R20 front and 315/30R20 rear Michelin® Pilot® Sport Cup 2 summer-only tires⁴
- Adjustable strut top mounts
- RECARO® sport 4-way manually adjustable driver and 2-way manually adjustable front-passenger seats in Ebony leather trim
- Exposed carbon fiber instrument panel trim
- Exposed carbon fiber GT4 track wing
- Splitter wickers¹
- Wheel locks



CARBON FIBER HANDLING PACKAGE⁵



- 20" x 11.0" front and 20" x 11.5" rear black-painted carbon fiber wheels with 305/30R20 front and 315/30R20 rear Michelin Pilot Sport Cup 2 summer-only tires⁴
- Oil catch can

- Adjustable strut top mounts
- Gurney flap
- Splitter wickers¹
- Wheel locks

OPTIONS



20" x 11.0"
Flow-Formed High-Gloss
Black-Painted Aluminum
[Standard]

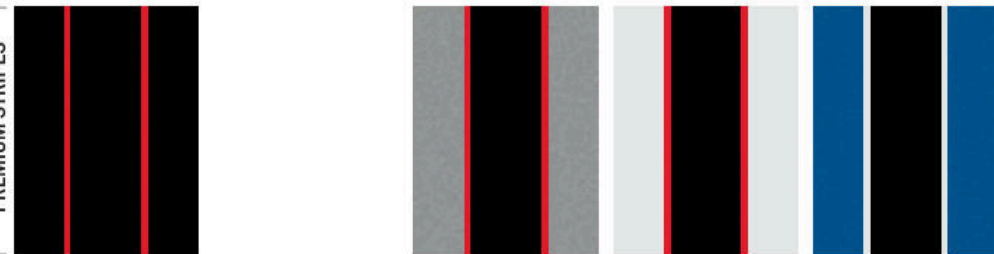
- Black-painted roof¹
- Exposed carbon fiber instrument panel trim
- Full vehicle cover with Shelby GT500 logo
- Painted over-the-top racing stripes¹
- RECARO sport 4-way manually adjustable driver and 2-way manually adjustable front-passenger seats in Ebony leather trim¹
- Vinyl over-the-top racing stripes¹
- Vinyl side stripes¹



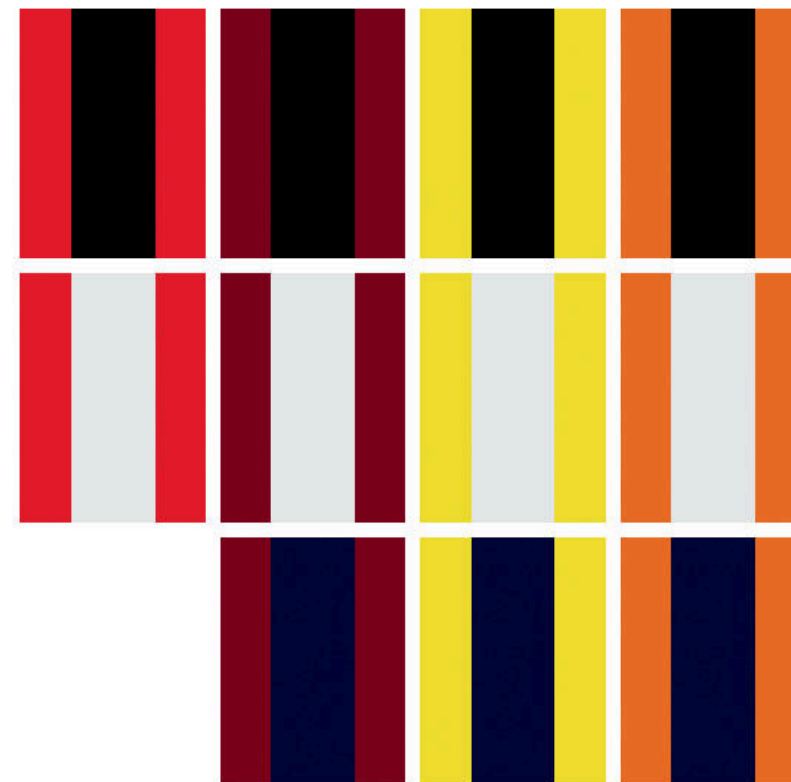
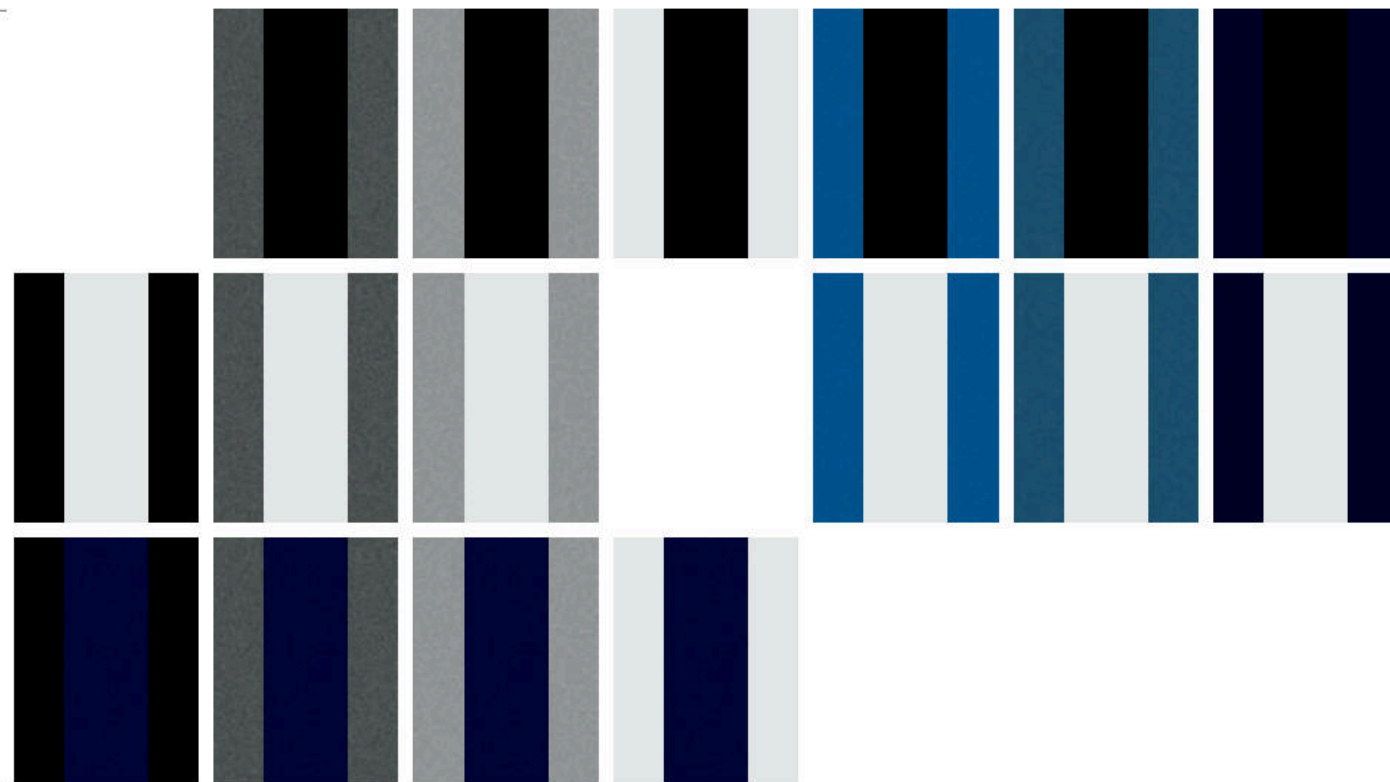
EXTERIORS



MACH 1 / MACH 1 PREMIUM STRIPES



AVAILABLE SHELBY GT500 STRIPES³



Shelby GT500 over-the-top racing stripes available in vinyl or painted.³ Optional vinyl side stripes offered in same color scheme as vinyl over-the-top racing stripes.



Colors are representative only. See your dealer for actual paint/trim options. 1. Additional charge. 2. Only available on Mach 1 Premium Appearance Package. 3. Restrictions may apply. See your dealer for details.



GT Premium in Iconic Silver Metallic accessorized with available Performance Package, rear spoiler, side and quarter window scoops, hood vents, park lamp curtains, Pony grille insert, wheel center caps, and wheel lock kit



Carbon fiber gear shift knob



Full vehicle covers¹



Floor liners



Dash cam systems¹

New Vehicle Limited Warranty. We want your Ford Mustang[®] ownership experience to be the best it can be. Under this warranty, your new vehicle comes with 3-year/36,000-mile bumper-to-bumper coverage, 5-year/60,000-mile Powertrain Warranty coverage, 5-year/60,000-mile safety restraint coverage, and 5-year/unlimited-mile corrosion perforation (aluminum panels do not require perforation) coverage – all with no deductible. Please ask your Ford Dealer for a copy of this limited warranty.

Ford Credit[®] Get the ride you want. Whether you plan to lease or buy, Ford Credit has the option that's right for you. Ask your Ford Dealer for details or visit us online at ford.com/finance.

Roadside Assistance. Covers your vehicle for 5 years or 60,000 miles, so you have the security of knowing that help may be only a phone call away should you run out of fuel, lock yourself out of the vehicle or need a winch back to a paved road, a battery jump start or towing. Your Ford Dealer can provide complete details on all of these advantages.

Ford Protect[™] Extended Service Plans. Whether you purchase or lease your Ford vehicle, insist on genuine Ford Protect extended service plans. Ford Protect has a variety of plans to give you peace-of-mind protection whether you want vehicle component or maintenance coverage. Plus, they are fully backed by Ford and honored at all Ford dealerships in the U.S., Canada and Mexico. When you visit your dealer, insist on genuine Ford Protect extended service plans.

Ford Insure. Insurance that lets you earn discounts for safe driving, offering a maximum discount of 40% off your auto insurance. Ford Insure works with your 2021 Mustang to gauge driving habits and calculate a discount based on how you drive. Visit www.fordinsure.com to learn more.

American Road Services Company LLC (a Ford affiliate) is the licensed insurance agency offering Ford Insure and is underwritten by Nationwide Mutual Insurance Company and affiliates. Home Office: Columbus, OH. Ford Motor and Ford Credit are not insurance companies or agents. Subject to underwriting guidelines, review and approval. Details and availability varies; program criteria differ in California. Discounts do not apply to all coverage elements; actual savings vary by state, coverage selections, rating factors and policy changes.

Ford Original Accessories. They're warranted for whichever provides you the greatest benefit: 24 months/unlimited mileage, or the remainder of your Bumper-to-Bumper 3-year/36,000-mile New Vehicle Limited Warranty.

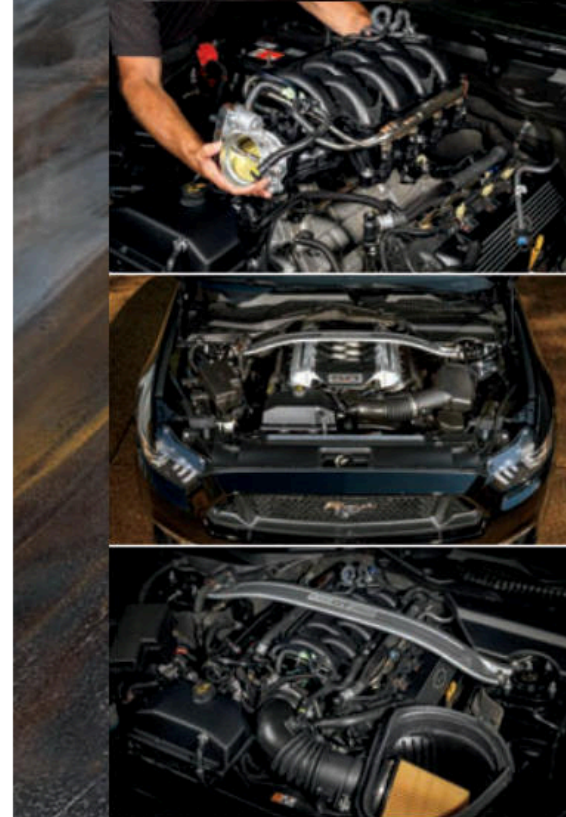
Ford Licensed Accessories (FLA) are warranted by the accessory manufacturer's warranty. FLA are designed and developed by the accessory manufacturer and have not been designed or tested to Ford Motor Company engineering requirements. Contact your Ford Dealer for details and/or a copy of all limited warranties.

1. Ford Licensed Accessory.

Ford and Oval Device, 911 Assist, ActiveX, AdvanceTrac, Antimatter, AppLink, Belt-Minder, BLIS, Cobra, EcoBoost, Ford Co-Pilot360, Ford Credit, Ford Protect, Ford Safe and Smart, FordPass, Mustang, MyColor, MyKey, Personal Safety System, SecuriLock, SelectShift, SYNC, Track Apps and related marks are trademarks of Ford Motor Company.

Alcantara is a registered trademark of Alcantara S.p.A., Italy. Apple, Apple CarPlay and iPhone are trademarks of Apple Inc., registered in the U.S. and other countries. BANG & OLUFSEN and B&O are registered trademarks of Bang & Olufsen Group. Licensed by Harman Becker Automotive Systems Manufacturing Kft. All rights reserved. Brembo is a trademark of Brembo S.p.A. Google, Android, Android Auto and Google Play are trademarks of Google LLC. Requires the Android Auto app on Google Play and an Android compatible smartphone running Android[™] 5.0 or higher. GT350, GT500 and Shelby are registered trademarks of Carroll Hall Shelby Trust. HD Radio is a proprietary trademark of iBiquity Digital Corporation. MagneRide is a trademarked technology of BWI Group. Michelin and Pilot are registered trademarks of Michelin North America, Inc. Miko is a registered trademark of Miko s.r.l. Pirelli is a trademark of Pirelli & C. S.p.A. RECARO is a registered trademark of RECARO Beteiligungs-GmbH. SiriusXM and all related marks and logos are trademarks of SiriusXM Radio Inc. TORSSEN is a registered trademark of JTEKT Corporation. TREMEC is a registered trademark of Transmisiones Y Equipos Mecanicos, S.A. de C.V.

Comparisons based on competitive models (class is High-Power Sports Cars), publicly available information and Ford certification data at time of release. Vehicles may be shown with optional and aftermarket equipment. Features may be offered only in combination with other options or subject to additional ordering requirements/limitations. Dimensions shown may vary due to optional features and/or production variability. Information is provided on an "as is" basis and could include technical, typographical or other errors. Ford makes no warranties, representations, or guarantees of any kind, express or implied, including but not limited to, accuracy, currency, or completeness, the operation of the information, materials, content, availability, and products. Ford reserves the right to change product specifications, pricing and equipment at any time without incurring obligations. Your Ford Dealer is the best source of the most up-to-date information on Ford vehicles.



PASSION POWER

Mustang owners like to drive it like they stole it – then show it as their own. Ford Performance Parts are designed to help you do just that.

If your passion is for power, we've got plenty of options. There's the Aluminator XS crate engine, Mustang GT supercharger kits, and Mustang GT intake/calibration kits. Plus, you'll find a bevy of handling packs, performance exhaust systems, and brake upgrades available to bring more stride to your ride.

For showtime, Ford Performance Parts offers a plethora of appearance accessories ranging from under-hood eye candy and carbon fiber shift knobs to windshield banners, aluminum pedal kits, and performance gauge kits – just to name a few.

However you wish to trick out your Pony, know this: all Ford Performance Parts are designed, engineered and executed to the rigorous OE standards set by Ford. You can rest assured that they've earned the right to wear the Blue Oval the hard way – and the right way.

Learn more at www.performanceparts.ford.com.



From day one, we had the future in mind. And over 117 years later, we continue that tradition of innovation with Ford Co-Pilot360™ helping push us closer to autonomous driving, the latest generation of SYNC® to communicate untethered and our first fully electric vehicle – Ford Mustang Mach-E®

We've always had our mind on the future. Now we're building it.

Z1MSTPDF

©2020 Ford Motor Company

The FordPass™ App

Meet FordPass. The app that puts your ownership experience in the palm of your hand.



Access complimentary remote features like start/stop, lock/unlock, schedule a start, locate vehicle and vehicle status check when your vehicle is equipped with FordPass Connect²



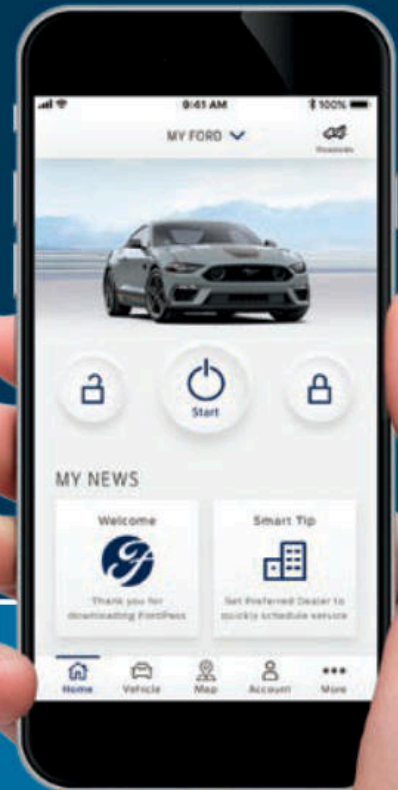
With FordPass Rewards, earn Points to use toward complimentary maintenance³ or accessories when you buy or lease a new Ford vehicle



Earn 10 FordPass Rewards Points for every \$1 spent on vehicle service and maintenance



Get help on the road with 24/7 Roadside Assistance⁴



Download the FordPass App today.

1. Automatic transmission only. **2.** FordPass Connect, the FordPass App, and complimentary Connected Service are required for remote features (see FordPass Terms for details). Connected service and features depend on compatible AT&T network availability. Evolving technology/cellular networks/vehicle capability may limit functionality and prevent operation of connected features. Connected service excludes Wi-Fi hotspot. FordPass App, compatible with select smartphone platforms, is available via download. Message and data rates may apply. **3.** Modem must be activated within 60 days of purchase through the FordPass App on a smartphone and remain active for at least 6 months after activation. Buyers of non-modem-equipped vehicles will also receive Points for complimentary maintenance after enrollment. Visit a participating dealer for details or go to FordPassRewards.com. **4.** Roadside assistance is included for certain owners and available to everyone for a per-service fee.