

2016 | SUPER DUTY® CHASSIS CAB





FOR THE TOUGHEST WORK, COUNT ON SUPER DUTY.

Within construction, heavy hauling, emergency vehicles and other industries, people rely on F-Series Super Duty Chassis Cab. Your choice of 3 Ford built powertrains. A class-exclusive¹ live-drive power takeoff (PTO) provision.² And the strength of Built Ford Tough.[®]

F-550 LARIAT SuperCab 4x2. Bronze Fire. Available equipment.

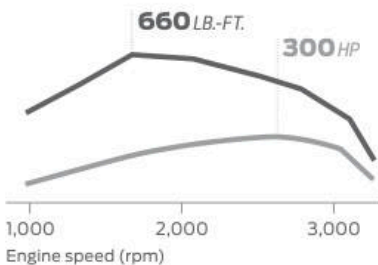
¹Class 3-5 Conventional Chassis Cabs. ²Available feature.

Vehicles throughout this brochure may be shown with optional and aftermarket upfit equipment.

2016 SUPER DUTY[™]
CHASSIS CAB
ford.com



6.7L Power Stroke® V8 Turbo Diesel



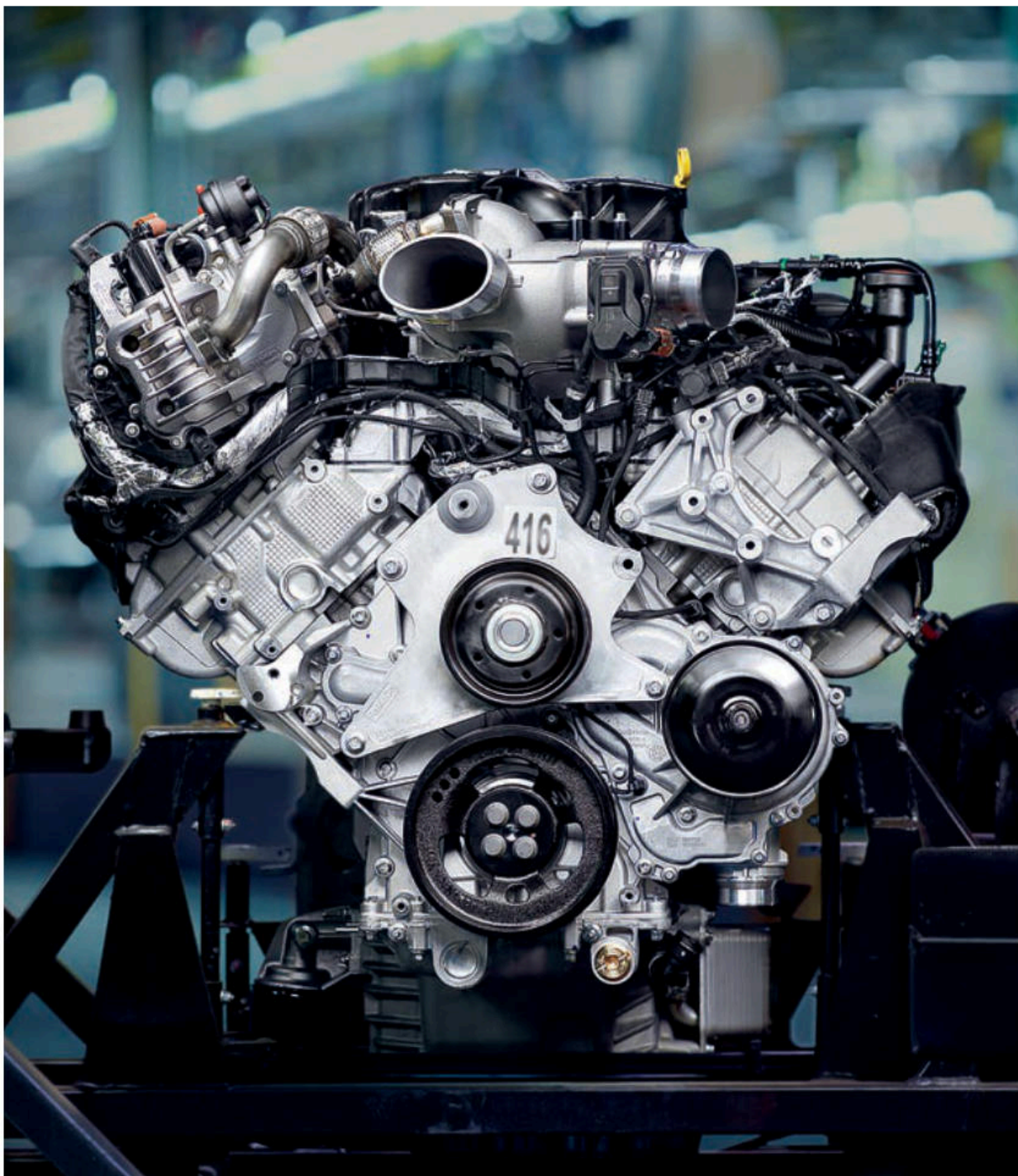
TESTED AND PROVEN. POWER STROKE DIESEL.

Designed, engineered and built by Ford, the 6.7L Power Stroke V8 Turbo Diesel¹ features innovations that contribute to its durability. One example: precision dual water jackets help minimize weight while maximizing the cooling of its aluminum cylinder head.

Maximum power is generated quickly, thanks in part to the compact, efficient design of a single-stage Variable Geometry Turbocharger. The diesel is paired with a rugged TorqShift® 6-speed SelectShift® automatic transmission. Low-speed lockup capability (down to 900 rpm) on its torque converter helps the V8 work efficiently at lower rpm.

This B20-capable engine has already proven itself in over 12 million miles of cumulative testing and real-world use under extreme conditions. From 120°F scorching heat to -40°F bone-chilling cold, the 6.7L Power Stroke defines Built Ford Tough®.

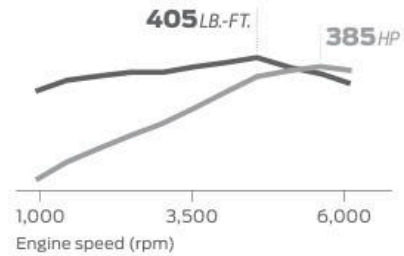
Get alerts for oil changes with the Intelligent Oil-Life Monitor®, which tracks oil temperature, soot filter regeneration cycles, engine-idle hours and mileage, then alerts you when it's time to make the change.



¹Available feature.



6.2L 2-Valve V8 Gas



6.8L 3-Valve V10 Gas



RANGE FAR BEYOND GAS.

Engineered, built and torture-tested by Ford, the standard 6.2L 2-valve V8 engine on F-350 supplies 385 hp and 405 lb.-ft. of torque. It also gives you the power of choice when refueling. Run it on gas, E85 or a blend of the two.

Alternative fuel options include a CNG/Propane Gaseous Engine Prep Package that readies your truck to be upfit to run on compressed natural gas (CNG), on propane autogas, or as a bi-fuel vehicle with the ability to seamlessly switch between CNG or propane and gasoline.

For flexibility and extended range, Ford trucks upfit to a bi-fuel system include a tank for each type of fuel. Our 6.8L V10 engine, standard on F-450/F-550 XL/XLT, can also be prepped¹ to run on CNG or propane. The only V10 engine available in the class, it provides plenty of pull for your heavy loads. For ordering details, see your Ford Dealer. Purchasing a Super Duty upfit this way may help you qualify for state incentives related to alternative-fuel use, infrastructure or vehicles. Visit afdc.energy.gov/afdc/laws for details.

FLEX FUEL



2016 SUPER DUTYSM
CHASSIS CAB
ford.com

F-350 XLT SuperCab. Race Red.

¹Available feature.

INSPIRE TOWING CONFIDENCE.

The 2016 Chassis Cab offers a wide range of towing capacities¹ along with plenty of assistance – including a new Rear View Camera and Prep Kit,^{2,3} and class-exclusive PowerScope[®] trailer tow mirrors.²

To help make backing up easier, the Rear View Camera and Prep Kit features a loose camera that you place where you want, a wiring bundle, and an auto-dimming rearview mirror with camera display. It's great for hooking up your load as well.

To lock out upper gears when heavily loaded or when towing on grades, use the progressive range select mode on the Ford TorqShift[®] 6-speed SelectShift[®] automatic transmission.²

For optimal towing performance, tow/haul mode helps manage gear selection by keeping the engine in its power band. Trailer sway control⁴ and hill start assist are both standard on SRW models, while DRW models feature driver-selectable engine-only traction control. Plus, our integrated trailer brake controller² helps balance the performance of the truck and your electric trailer brakes.⁵

It all adds up to a truck you can rely on whenever there's serious work to be done – Ford Super Duty.



26,600 LBS.



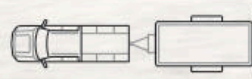
MAX. TOWING¹

HILL START



ASSIST²

CONTROLS



SWAY^{2,4}

F-550 XLT SuperCab 4x4, Oxford White. Available and aftermarket upfit equipment.

¹When properly equipped. ²Available feature. ³Driver-assist features are supplemental and do not replace the driver's attention, judgment and need to control the vehicle. ⁴Remember that even advanced technology cannot overcome the laws of physics. It's always possible to lose control of a vehicle due to inappropriate driver input for the conditions. ⁵Trailer brake controller verified to be compatible with electrically actuated drum brakes and certain electric-over-hydraulic brake systems. See your Ford Dealer for details.

2016 SUPER DUTY[™]
CHASSIS CAB
ford.com



COMMAND IT WITH YOUR VOICE.

Voice-activated SYNC^{®1} technology helps you keep your eyes on the road and hands on the wheel. SYNC. Say the word.

- **Hands-free calling** lets you make a call with a simple push of a button along with the sound of your voice.
- **Automatic phone book download** transfers the names and numbers in your compatible phone automatically, once paired.
- **Voice-activated music commands** let you say what music you want to hear and listen to it easily with voice-activated search, or say "Bluetooth[®] audio" to stream content from your phone.
- **SYNC AppLink^{™2}** lets you control some of your favorite compatible mobile apps with your voice.
- **911 Assist^{®3}** is a convenient no-charge feature that allows you to connect your compatible cell phone to help call 911, even if you can't.

Upgrade to SYNC with MyFord Touch.^{®1}

- **An LCD screen** lets you easily read and control the things you want.
- **Voice-activated navigation⁴** features voice-recognition technology that lets you say commands as conversational as "find a restaurant." The system then helps guide you to your destination with audible turn-by-turn directions.
- **Voice control climate** lets you use your voice to adjust the climate, so you can stay comfortable without having to lift a finger.

| SYNC

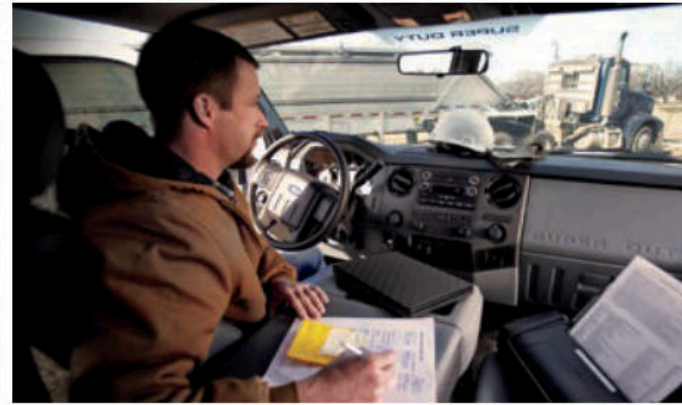
LARIAT. Charcoal Black leather trim. SYNC with MyFord Touch. Available equipment.



¹Available feature. Driving while distracted can result in loss of vehicle control. Only use SYNC/MyFord Touch/other devices, even with voice commands, when it is safe to do so. Some features may be locked out while the vehicle is in gear. Not all features are compatible with all phones. ²Available feature. SYNC AppLink is available on select models and compatible with select smartphone platforms. SYNC AppLink is not compatible with MyFord Touch. Commands may vary by phone and AppLink software. ³The vehicle's electrical system (including the battery), the wireless service provider's signal and a connected mobile phone must all be available and operating for 911 Assist to function properly. These systems may become damaged in a crash. The paired mobile phone must be connected to SYNC, and the 911 Assist feature enabled, in order for 911 to be dialed. When the feature is ON, 911 Assist uses your paired and connected mobile phone to assist occupants to contact emergency services by dialing 911 if your airbag deploys or, on certain vehicles, if the emergency fuel pump shut-off is activated. ⁴Available feature.

2016 SUPER DUTY[™]
CHASSIS CAB
ford.com





ENCOURAGE PRODUCTIVITY.

Through extensive storage. Lots of power access to recharge devices at up to 8 available locations (four 12-volt powerpoints, two 110-volt outlets, and two USB ports). Plus comfortable surroundings with our rapid-heat supplemental cab heater,¹ and heated rear seats¹ on LARIAT Crew Cab.

Help make your business more efficient, and provide drivers with feedback on the road, with new Ford Telematics™ powered by Telogis.^{®1,2} Deep integration provides a 360° view of exclusive vehicle metrics and driver behavior.

Recharge your devices with dual USB ports on the SYNC® with MyFord Touch^{®1} media hub. The mini-console¹ holds small essentials and 2 beverages.

SiriusXM® Satellite Radio¹ welcomes you to the World of SiriusXM.³ Enjoy more than 150 channels including commercial-free music, plus live sports, news and exclusive entertainment, with a 6-month trial subscription to the All Access package included with your new vehicle. You'll hear every channel available, plus you can listen online and on the SiriusXM app.³

Navigation¹ with SiriusXM Traffic and Travel Link[®] includes a 5-year complimentary SiriusXM Traffic and Travel Link³ trial subscription. Global Positioning System (GPS) technology is combined with 3-D mapping and provides voice-guided turn-by-turn directions. With SiriusXM Traffic and Travel Link, you'll get detailed traffic information, plus current and forecasted weather, gas station locations and prices, sports scores and schedules, and movie theater locations with show listings and times.

(((SiriusXM)))

¹Available feature. ²Ford Licensed Accessory. ³SiriusXM Satellite Radio, SiriusXM Traffic and SiriusXM Travel Link subscriptions are sold separately or as a package by SiriusXM after your trial period, and are continuous until you call SiriusXM at 1-866-635-2349 to cancel. If you decide to continue service after your trial, the subscription plan you choose will automatically renew thereafter and you will be charged according to your chosen payment method at then-current rates. Fees and taxes apply. All fees and programming subject to change. See Customer Agreement for complete terms and more information at www.siriusxm.com.



DELIVER LIKE NO OTHER.

With a class-exclusive live-drive power takeoff (PTO) provision on its diesel powertrain,¹ Chassis Cab offers workers of all kinds big-truck capability to get to previously inaccessible locations.

Dual alternators¹ supply additional amperage on the 6.7L Power Stroke® V8 Turbo Diesel for those accessories and upfits that demand it.

With 68 gallons of total fuel capacity, a dual-tank setup¹ on diesel-equipped DRWs is just one of your fuel tank options. Open C-channel construction includes industry standard 34" frame-rail spacing and straight frame rails behind the cab to accept a wide range of aftermarket bodies. Large rotor swept areas on the standard 4-wheel power disc brakes with Anti-Lock Brake System (ABS) help to provide a confident brake feel.

From standard upfitter switches to lockable underseat storage¹ to 110-volt power outlets² and beyond, F-Series Super Duty Chassis Cab is engineered to help you master your business.

F-550 XL Crew Cab 4x4. Available and aftermarket upfit equipment.

¹Available feature. ²Standard on LARIAT; available on XLT.

2016 SUPER DUTY™
CHASSIS CAB
ford.com



SUPER DUTY CHASSIS CAB SPECIFICATIONS



STANDARD FEATURES

Mechanical

Gas engine tune-up interval: 97,500 miles²
 Diesel engine service intervals as indicated in message center: oil 10,000 miles; fuel filter 22,500 miles; coolant 105,000 miles or 6 years, whichever comes first
 Auxiliary rear springs
 Battery saver
 Engine-only traction control (EOTC) (DRW only)
 Fail-Safe Engine Cooling System (gas engines)
 Fuel tank – 28-gallon midship (SRW)
 Fuel tank – 40-gallon aft-of-axle (DRW)
 Hill start assist (SRW only)
 Power steering
 Stabilizer bars – Front and rear
 Stainless steel exhaust system (major components)
 Stationary elevated idle control (SEIC)³
 Steering damper
 Trailer sway control (F-350 SRW only)
 Trailer tow prep includes 7-wire harness (blunt-cut) with relays

Interior

Air conditioning
 Assist and ride handles
 Coat hooks – 1 (Regular Cab); 2 in rear of cab (SuperCab and Crew Cab)
 Dome light (front and rear with Crew Cab)
 Overhead console with garage door opener storage and sunglasses storage (SuperCab and Crew Cab)
 Powerpoints – 12-volt, 2 on instrument panel
 Steering column – Manual-tilt/-telescoping
 Upfitter switches – 4 on instrument panel
 Windows – Flip-open rear quarter (SuperCab)

Exterior

Dual-beam jewel-effect headlamps
 Intelligent 3-blink turn signals
 Roof clearance lamps
 Tow hooks – Black, 2 in front
 Underhood service lamp
 Windshield wipers – Intermittent

Safety & Security

AdvanceTrac[®] with RSC[®] (Roll Stability Control™) (SRW only)
 Airbags⁴ – Driver and right-front-passenger front
 Airbags⁴ – Front-seat side
 Airbags⁴ – Safety Canopy[®] System with side-curtain airbags for all rows and rollover sensor
 Belt-Minder[®] front safety belt reminder
 Brake/shift interlock
 Brakes – Power 4-wheel vented-disc with Anti-Lock Brake System (ABS)
 Child-safety-seat top tether anchors (Regular Cab front passenger and all rear-seat positions)
 Fuel pump inertia shutoff switch
 Headlamps-on, key-in-ignition and door-ajar alert chimes
 Passenger airbag deactivation switch (Regular Cab, SuperCab)
 Safety belts – Energy-management retractors at front-outboard positions
 Safety belts – Height-adjustable safety belts at front-outboard positions
 Side-intrusion door beams
 SOS Post-Crash Alert System™

MODELS

F-350

Maximum Capabilities¹

5th-Wheel Towing: 16,600 lbs.
 Conventional Towing: 15,000 lbs.
 Payload: 7,872 lbs.
 GCWR: 24,500 lbs.
 GVWR: 14,000 lbs.
 Front GAWR: 5,250 lbs. (4x2); 6,000 lbs. (4x4)

Equipment Configurations

Engines: 6.2L Gas V8 Flex Fuel E85-capable
 6.7L Power Stroke[®] V8 Turbo Diesel
 B20-capable

Drivelines: 4x2 or 4x4 • Single Rear Wheel or Dual Rear Wheel

Bodies: Regular Cab, SuperCab, Crew Cab

Trim Series: XL, XLT, LARIAT

F-450

Maximum Capabilities¹

5th-Wheel Towing: 21,600 lbs.
 Conventional Towing: 16,000 lbs.
 Payload: 9,945 lbs.
 GCWR: 30,000 lbs.
 GVWR: 16,500 lbs.
 Front GAWR: 7,000 lbs.

Equipment Configurations

Engines: 6.8L Triton[®] Gas V10
 6.7L Power Stroke V8 Turbo Diesel
 B20-capable

Drivelines: 4x2 or 4x4 • Dual Rear Wheel only

Bodies: Regular Cab, SuperCab, Crew Cab

Trim Series: XL, XLT, LARIAT

F-550

Maximum Capabilities¹

5th-Wheel Towing: 26,600 lbs.
 Conventional Towing: 16,000 lbs.
 Payload: 12,660 lbs.
 GCWR: 35,000 lbs.
 GVWR: 19,500 lbs.
 Front GAWR: 7,000 lbs.

Equipment Configurations

Engines: 6.8L Triton Gas V10
 6.7L Power Stroke V8 Turbo Diesel
 B20-capable

Drivelines: 4x2 or 4x4 • Dual Rear Wheel only

Bodies: Regular Cab, SuperCab, Crew Cab

Trim Series: XL, XLT, LARIAT

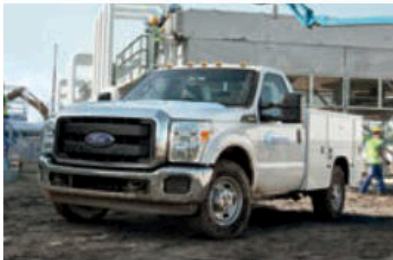
PICKUP BOX DELETE

Available on F-250 and F-350 Pickups with any 8' box wheelbase. Includes 2½" trailer hitch receiver (for the maximum conventional trailer tow ratings of the vehicle, look for the similar configuration with pickup box in the RV & Trailer Tow Guide). Deletes pickup box, tie-down hooks, bodyside moldings, rear bumper, spare wheel, tire, carrier and jack.

¹When properly equipped. ²Under normal driving conditions with routine fluid and filter changes. ³Final-stage manufacturer must supply control switches.

⁴Always wear your safety belt and follow airbag warning label instructions. Passenger airbag may be deleted.





F-350 XL Regular Cab 4x2, Oxford White, XL Appearance Package. Available and aftermarket upfit equipment.



XL Regular Cab, Steel HD vinyl trim, XL Appearance Package. Available equipment.

Includes all standard features, plus:

Mechanical

6.2L SOHC 2-valve Gas V8 Flex Fuel E85-capable engine (F-350)

6.8L Triton® SOHC 3-valve Gas V10 engine (F-450/F-550)

TorqShift® Heavy-Duty 6-speed SelectShift® automatic transmission (F-350)

TorqShift 5-speed automatic transmission (F-450/F-550)

Alternator – 157-amp heavy-duty (F-350)

Alternator – 175-amp heavy-duty (F-450/F-550)

Manual 4-Wheel-Drive System with manual locking hubs (4x4 models only)

17" argent-painted steel wheels (F-350)

19.5" argent-painted steel wheels (F-450/F-550)

LT245/75R17E all-season BSW tires (F-350)

225/70R19.5G all-season BSW tires (F-450/F-550)

Seating

HD vinyl 40/20/40 split front seat with center armrest, dual cupholders and storage

60/40 split flip-up rear bench seat (SuperCab only)

60/40 split flip-up/fold-down rear bench seat with outboard and center head restraints (Crew Cab only)

Manual lumbar support for driver's seat

Interior

AM/FM stereo with digital clock and 2 speakers

Climate controls – Manual

Door locks – Manual

Flooring – Black vinyl

Message center – Multifunction with trip computer includes odometer, trip odometer, engine-hour meter, distance to empty, average fuel economy, oil-life monitor, warning messages, system check, language selection and Ice Blue® Lighting

Mirror – Manual day/night rearview

Steering wheel – Black urethane with 3-button message center control

Visors with passenger mirror

Window – Rear, fixed

Windows – Manual

Exterior

Bumper – Black-painted front with grained top cover

Door handles – Black

Glass – Solar-tinted

Grille – Black bar-style

Mirrors – Manually telescoping trailer tow with 2-way fold and manual glass

Available Options

Mechanical

6.7L Power Stroke® V8 Turbo Diesel B20-capable engine

Electronic shift-on-the-fly (ESOF) 4-Wheel-Drive System with auto/manual locking hubs (4x4 models only; n/a with 6.8L Triton V10 gas engine)

Alternator – 200-amp extra-heavy-duty (6.2L gas or 6.7L diesel engines only)

Alternators – Dual with 357-amp total (6.7L diesel engine only)

Engine block heater (standard in 15 cold-weather states)

Engine idle shutdown (6.7L diesel engine only)

Fuel tank – 28-gallon midship (n/a w/189" WB Regular Cab or 200" WB Crew Cab with gas engines)

Fuel tank – Dual tanks (40-gallon aft-of-axle and 28-gallon midship; DRW diesel engine only; restrictions apply)

Integrated trailer brake controller¹

Jack – 2-ton mechanical (F-350 SRW)

Jack – 4-ton hydraulic (F-350 DRW)

Jack – 6-ton hydraulic (F-450/F-550)

Operator-commanded exhaust filter regeneration (6.7L diesel engine only)

Power take-off (PTO) provision (6.8L gas and 6.7L diesel engines only; includes transmission-mounted live-drive and stationary modes with diesel engine only)

Rear axle – Electronic-locking (F-350 SRW only)

Rear axle – Limited-slip (LS) (DRW only)

Rear view camera and prep kit (Fleet only)

Spare tire/wheel/jack

Speed limitation – 65-mph top governed speed (n/a with 6.8L engine; Fleet only)

Speed limitation – 75-mph top governed speed (n/a with 6.8L engine; Fleet only)

Tire Pressure Monitoring System delete (Fleet only)

17" 6-spoke cast-aluminum wheels (F-350 SRW)

17" polished forged-aluminum wheels (F-350 DRW)

Stainless steel wheel covers (DRW only; requires 17" or 19.5" argent-painted steel wheels)²

18" argent-painted steel wheels – 4 (F-350 SRW); LT245/75R17E all-terrain BSW tires – 4 (F-350 SRW); 6 (F-350 DRW)

LT275/65R18E all-season BSW tires – 4 (F-350 SRW)

LT275/70R18E all-terrain BSW tires – 4 (F-350 SRW 4x4 only)

225/70R19.5G BSW traction tires – 2 all-season tires and 4 traction tires (F-450/F-550)

225/70R19.5G max. traction BSW tires – 6 (F-450/F-550 4x4 only)

Seating

40/mini-console/40 front bucket seats (HD vinyl or cloth)

Cloth 40/20/40 split front seat

Interior

AM/FM single-CD player (Fleet only)

SYNC® with MyFord® voice-activated, in-vehicle connectivity system with SYNC AppLink™ (requires XL Value Package or XL Appearance Package and steering wheel-mounted audio controls)

Radio delete (Fleet only)

Air conditioning delete (Fleet only)

Cruise control (Fleet only)

Front-passenger front airbag and front-seat side airbags/side-curtain airbags delete (Fleet only; restrictions apply)

Front-seat side airbags/side-curtain airbags delete (Fleet only)

Rapid-heat supplemental cab heater (requires diesel engine and alternator upgrade; standard in 15 cold-weather states)

Steering wheel-mounted audio controls (requires SYNC)

Window – Rear, manual-sliding with privacy glass (Fleet only)

Exterior

Cab steps – 6" angular black molded

Center high-mounted stop lamp (required for vehicles with GVWR less than 10,000 lbs.)

Daytime running lamps (Fleet only)

Exterior back-up alarm²

Ford Telematics™ powered by Telogis®² – Fleet tracking system (includes 1 year of service)

Four-corner strobe (Fleet only)

Remote Start System (requires Power Equipment Group)

Splash guards/mud flaps (F-350 only; front only)

Transfer case skid plate (4x4 SuperCab and Crew Cab only)

Available Packages

Power Equipment Group includes power door locks and power front windows with one-touch-up/-down window feature; power rear windows (Crew Cab only); upgraded interior door-trim panels; manually telescoping trailer tow mirrors with 2-way fold, power/heated glass, heated manual spotter mirrors, and integrated clearance lamps and turn signals; accessory delay; Remote Keyless Entry System with 2 integrated keypad transmitter remotes; MyKey®; SecurILock® Passive Anti-Theft System; and perimeter anti-theft alarm

XL Appearance Package (n/a with XL Value Package) includes AM/FM stereo/single-CD player with MP3 capability, digital clock, 4 speakers and auxiliary audio input jack; cruise control; bright hub covers and center ornaments (SRW only); chrome grille surround; and chrome front bumper

XL Decor Group includes chrome front bumper with grained top cover, and bright hub covers and center ornaments (hub covers and center ornaments included with SRW only)

XL Value Package (n/a with XL Appearance Package) includes AM/FM stereo/single-CD player with MP3 capability, digital clock, 4 speakers and auxiliary audio input jack; cruise control; chrome front bumper with grained top cover; and bright hub covers and center ornaments (hub covers and center ornaments included with SRW only)

16,000-lb. GVWR Package (F-450 only)

Ambulance Prep Package (Fleet only; diesel engine only; restrictions apply) includes dual alternators (combined 357 amps), maximum front springs/GAWR rating for configuration selected, standard-width rear axle with F-350 SRW, and wide-track limited-slip rear axle with F-350 DRW and operator-commanded exhaust filter regeneration

CNG/Propane Gaseous Engine Prep Package (F-350 with 6.2L gas engine only) includes hardened engine intake valves and valve seats and bi-fuel manifold

CNG/Propane Gaseous Engine Prep Package (F-450/F-550 with 6.8L gas engine only) includes hardened engine intake valves and valve seats

Extra-Heavy-Service Front Suspension Package includes 2-up front springs upgrade (unless maximum springs have been computer selected as included equipment; restrictions apply)

Fire/Rescue Prep Package with EPA special emissions for diesel engine (Fleet only; diesel engine only; restrictions apply) includes dual alternators (combined 357 amps), maximum front springs/GAWR for configuration selected, operator-commanded exhaust filter regeneration, and Federal Emissions

Heavy-Service Front Suspension Package (restrictions apply) includes 1-up front springs upgrade (unless maximum springs have been computer selected as included equipment)

High-Capacity Trailer Tow Package (F-450/F-550 only; restrictions apply) includes 30,000-lb. GCWR for F-450 and 35,000-lb. GCWR for F-550, upgraded rear-axle gear set and trailer brake wiring (trailer brake controller not included)

Low Deflection Package (F-450/F-550 only) includes 2" spacer blocks; recommended for rear-biased loading (n/a on 141" WB)

Payload Downgrade Package (F-350 SRW/F-450/F-550 only; required on F-350 SRW with 17" wheels) includes a 9,800-lb. GVWR rating for F-350 SRW with 17" wheels, a 10,000-lb. GVWR rating for F-350 SRW with 18" wheels, a 15,000-lb. GVWR rating for F-450 and a 17,500-lb. GVWR rating for F-550

Payload Upgrade Package (F-550 with 141" WB, 6.8L gas engine and 4.88 limited-slip [LS] axle only) increases GVWR to 19,000 lbs. and includes upgraded frame and rear axle

Payload Plus Upgrade Package (F-550 with 4.88 limited-slip [LS] axle only; restrictions apply) increases GVWR to 19,500 lbs. and includes upgraded frame, rear axle and springs

Snow Plow Prep Package (restrictions apply) includes computer-selected springs for snow plow application and extra-heavy-duty alternator with diesel engine only

Trailer Tow Package (restrictions apply) includes aftermarket trailer brake wiring kit (trailer brake controller not included)

¹Trailer brake controller verified to be compatible with electrically actuated drum brakes and certain electric-over-hydraulic brake systems. See your Ford Dealer for details. ²Ford Licensed Accessory. See your dealer for limited warranty details.



Argent-Painted Steel
17" Standard: F-350 SRW
18" Optional: F-350 SRW



Argent-Painted Steel w/Bright Center Cap
17" Included or 18" Optional:
F-250/F-350 SRW w/XL Value Package
or XL Appearance Package



17" 6-Spoke Cast-Aluminum
Optional: F-350 SRW



17" Argent-Painted Steel
Standard: F-350 DRW



17" Argent-Painted Steel
w/Stainless Steel Cover
Optional: F-350 DRW



17" Polished Forged-Aluminum
Optional: F-350 DRW



19.5" Argent-Painted Steel
Standard: F-450/F-550 DRW



19.5" Argent-Painted Steel
w/Stainless Steel Cover
Optional: F-450/F-550 DRW

XL^T



F-550 XL^T Regular Cab 4x2. Oxford White. Available and aftermarket upfit equipment.

Includes all XL features, plus:

Mechanical

Integrated trailer brake controller¹
17" 6-spoke cast-aluminum wheels (F-350 SRW)

Seating

4-way adjustable driver and right-front-passenger head restraints

40/20/40 split front seat with center under-seat lockable storage with 12-volt powerpoint, and center armrest with dual cupholders and storage
60/40 split flip-up/fold-down rear bench seat with bag hooks; dual integrated cupholders and tray; outboard head restraints; center head restraint; and under-seat partitioned, lockable storage with 12-volt powerpoint (Crew Cab only)

Interior

AM/FM stereo/single-CD player with MP3 capability, digital clock, 4 speakers and auxiliary audio input jack

Ford SYNC[®] with myFord[®] voice-activated, in-vehicle connectivity system with SYNC AppLink[™]
SiriusXM[®] Satellite Radio with 6-month trial subscription

Accessory delay for power features

Cruise control

Door locks – Power

Flooring – Color-coordinated carpet

Flooring – Color-coordinated carpeted floor mats
MyKey[®]

Visors with covered driver and passenger mirrors

Windows – Power with front one-touch-up/-down feature



XL^T Crew Cab. Steel cloth trim. Flow-through center console. Available equipment.

Exterior

Anti-theft perimeter alarm
Bumper – Chrome front with grained top cover
Glass – Privacy (rear doors and rear windows)
Grille – Chrome bar-style

Mirrors – Manually telescoping trailer tow with 2-way fold, power/heated glass, heated manual spotter mirrors, and integrated clearance lamps and turn signals

Remote Keyless Entry System with 2 integrated keyhead transmitter remotes
SecuriLock[®] Passive Anti-Theft System

Available Options

Mechanical

6.7L Power Stroke[®] V8 Turbo Diesel B20-capable engine

Electronic shift-on-the-fly (ESOF) 4-Wheel-Drive System with auto/manual locking hubs (4x4 models only; n/a with 6.8L Triton[®] V10 gas engine)

Alternator – 200-amp extra-heavy-duty (6.2L gas or 6.7L diesel engines only)

Alternators – Dual with 357-amp total (6.7L diesel engine only)

Engine block heater (standard in 15 cold-weather states)

Engine idle shutdown (6.7L diesel engine only)

Fuel tank – 28-gallon midship (n/a w/189" WB Regular Cab or 200" WB Crew Cab with gas engines)

Fuel tank – Dual tanks (40-gallon aft-of-axle and 28-gallon midship; DRW diesel engine only)

Jack – 2-ton mechanical (F-350 SRW)

Jack – 4-ton hydraulic (F-350 DRW)

Jack – 6-ton hydraulic (F-450/F-550)

Operator-commanded exhaust filter regeneration (6.7L diesel engine only)

Power take-off (PTO) provision (6.8L gas and 6.7L diesel engines only; includes transmission-mounted live-drive and stationary modes with diesel engine only)

Rear axle – Electronic-locking (F-350 SRW only)

Rear axle – Limited-slip (DRW only)

Rear view camera and prep kit

Spare tire/wheel/jack

Speed limitation – 65-mph top governed speed (n/a with 6.8L engine; Fleet only)

Speed limitation – 75-mph top governed speed (n/a with 6.8L engine; Fleet only)

Tire Pressure Monitoring System delete (Fleet only)

17" argent-painted steel wheels (F-350 SRW; Fleet only)

17" polished forged-aluminum wheels (F-350 DRW)

18" cast-aluminum wheels (F-350 SRW)

19.5" polished forged-aluminum wheels (F-450/F-550)

Stainless steel wheel covers (DRW only; requires 17" or 19.5" argent-painted steel wheels)²

LT245/75R17E all-terrain BSW tires – 6 (F-350 DRW)

LT245/75R17E all-terrain OWL tires – 4 (F-350 DRW)

LT275/65R18E all-season BSW tires – 4 (F-350 SRW)

LT275/70R18E all-terrain BSW tires – 4 (F-350 SRW 4x4)

LT275/70R18 all-terrain OWL tires – 4 (F-350 SRW 4x4)

225/70R19.5G BSW traction tires – 2 all-season tires and 4 traction tires (F-450/F-550)

225/70R19.5G max. traction BSW tires – 6 (F-450/F-550 4x4 only)

Seating

Cloth 40/console/40 front bucket seats with 6-way power driver's seat and flow-through console with lockable storage, two 12-volt powerpoints and a 110-volt power outlet (SuperCab and Crew Cab only)

Interior

Flooring – All-weather floor mats

Flooring – Carpet delete (Fleet only)

Power-adjustable pedals (included in the XL^T Interior Package; Fleet only)

Rapid-heat supplemental cab heater (requires diesel engine and alternator upgrade; standard in 15 cold-weather states)

Window – Rear, manual-sliding with privacy glass (Regular Cab only)

Window – Rear, power-sliding with privacy glass and defroster (SuperCab and Crew Cab only)

Exterior

Cab steps – 6" angular black molded

Center high-mounted stop lamp (required for vehicles with GVWR less than 10,000 lbs.)

Daytime running lamps (Fleet only)

Exterior back-up alarm²

Ford Telematics[™] powered by Telogis[®]2 – Fleet tracking system (includes 1 year of service)

Four-corner strobe (Fleet only)

Mirrors – PowerScope[®] power-telescoping/-folding trailer tow with power/heated glass, heated manual spotter mirrors, and integrated clearance lamps and turn signals

Remote Start System

Splash guards/mud flaps (F-350 only; front only)

Transfer case skid plate (4x4 SuperCab and Crew Cab only)

Available Packages

XL^T Interior Package includes 6-way power driver's seat, power-adjustable pedals, autolamp with rainlamp feature, autolock/unlock and SecuriCode[™] keyless entry keypad

16,000-lb. GVWR Package (F-450 only)

Ambulance Prep Package (Fleet only; diesel engine only; restrictions apply) includes dual alternators (combined 357 amps), standard-width rear axle with F-350 SRW, and wide-track limited-slip rear axle with F-350 DRW and operator-commanded exhaust filter regeneration

CNG/Propane Gaseous Engine Prep Package (F-350 with 6.2L gas engine only) includes hardened engine intake valves and valve seats and bi-fuel manifold

CNG/Propane Gaseous Engine Prep Package (F-450/F-550 with 6.8L gas engine only) includes hardened engine intake valves and valve seats

Extra-Heavy-Service Front Suspension Package

(restrictions apply) includes 2-up front springs upgrade (unless maximum springs have been computer selected as included equipment)

Fire/Rescue Prep Package with EPA special emissions for diesel engine (Fleet only; diesel engine only; restrictions apply) includes dual alternators (combined 357 amps), maximum front springs/GAWR for configuration selected, operator-commanded exhaust filter regeneration, and Federal Emissions

Heavy-Service Front Suspension Package (restrictions apply) includes 1-up front springs upgrade (unless maximum springs have been computer selected as included equipment)

High-Capacity Trailer Tow Package (F-450/F-550 only; requires diesel engine; restrictions apply) includes 30,000-lb. GCWR for F-450 and 35,000-lb. GCWR for F-550, upgraded rear-axle gear set and trailer brake wiring (trailer brake controller not included)

Low Deflection Package (F-450/F-550 only; n/a on 141" WB) includes 2" spacer blocks; recommended for rear-biased loading)

Payload Downgrade Package (F-350 SRW/F-450/F-550 only; required on F-350 SRW with 17" wheels) includes a 9,800-lb. GVWR rating for F-350 SRW with 17" wheels, a 10,000-lb. GVWR rating for F-350 SRW with 18" wheels, a 15,000-lb. GVWR rating for F-450 and a 17,500-lb. GVWR rating for F-550

Payload Upgrade Package (F-550 with 141" WB, 6.8L gas engine and 4.88 limited-slip [LS] axle only) increases GVWR to 19,000 lbs. and includes upgraded frame and rear axle

Payload Plus Upgrade Package (F-550 with 4.88 limited-slip [LS] axle only; restrictions apply) increases GVWR to 19,500 lbs. and includes upgraded frame, rear axle and springs

Snow Plow Prep Package (restrictions apply) includes computer-selected springs for snow plow application and extra-heavy-duty alternator with diesel engine only

¹Trailer brake controller verified to be compatible with electrically actuated drum brakes and certain electric-over-hydraulic brake systems. See your Ford Dealer for details. ²Ford Licensed Accessory. See your dealer for limited warranty details.



17" Argent-Painted Steel
Optional: F-350 SRW (Fleet only)



17" 6-Spoke Cast-Aluminum
Standard: F-350 SRW



18" Cast-Aluminum
Optional: F-350 SRW



17" Argent-Painted Steel
Standard: F-350 DRW



17" Argent-Painted Steel
w/Stainless Steel Cover
Optional: F-350 DRW



17" Polished Forged-Aluminum
Optional: F-350 DRW



19.5" Argent-Painted Steel
Standard: F-450/F-550 DRW

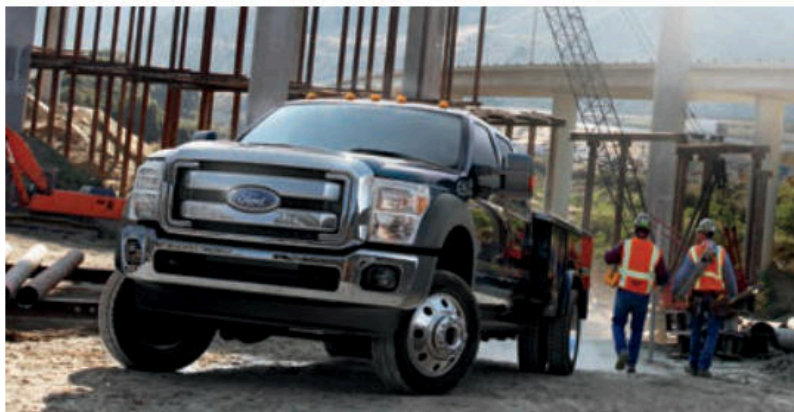


19.5" Argent-Painted Steel
w/Stainless Steel Cover
Optional: F-450/F-550 DRW



19.5" Polished Forged-Aluminum
Optional: F-450/F-550 DRW

LARIAT



F-550 LARIAT Crew Cab 4x4. Shadow Black. Available and aftermarket upfit equipment.

LARIAT Crew Cab. Charcoal Black leather trim. Available equipment.

Includes all XLT features, plus:

Mechanical

6.7L Power Stroke® V8 Turbo Diesel B20-capable engine (F-450/F-550)

TorqShift® Heavy-Duty 6-speed SelectShift® automatic transmission (F-450/F-550)

Alternator – 200-amp extra-heavy-duty

Electronic shift-on-the-fly (ESOF) 4-Wheel-Drive System with auto/manual locking hubs (4x4 models only)

18" bright-machined cast-aluminum wheels (F-350 SRW)

17" polished forged-aluminum wheels (F-350 DRW)

19.5" polished forged-aluminum wheels (F-450/F-550)

LT275/65R18E all-season BSW tires (F-350 SRW)

Seating

Premium leather-trimmed 40/console/40 front bucket seats and flow-through center console with lockable storage, two 12-volt powerpoints and a 110-volt power outlet

Power 10-way driver and front-passenger seats

Interior

Premium Sound System includes AM/FM stereo/single-CD player with MP3 capability, digital clock and 8 speakers with subwoofer (SuperCab)

Premium Audio System from Sony® includes AM/FM stereo/single-CD player with MP3 capability, digital clock and 8 speakers with subwoofer (Crew Cab)

SYNC® with MyFord Touch® includes an 8" color LCD touch screen in center stack and dash-top closable storage with media hub (2 USB ports, SD card reader, audio/video input jacks, and 12-volt powerpoint)

Autolock/unlock

Dual-zone electronic automatic temperature control
Message center – Driver-configurable enhanced information center with 4.2" LCD productivity screen includes gauge setup, trip computer, fuel economy and towing/off-road applications, SelectShift controls, halo lighting, and daytime illumination

Mirror – Auto-dimming rearview

Power-adjustable pedals

Power outlet – 110-volt on instrument panel

Steering wheel – Color-coordinated leather-wrapped with 5-button message center control and secondary audio controls

Visors with illuminated driver and passenger mirrors

Window – Rear, power-sliding with privacy glass and defrost

Woodgrain-style instrument panel accents

Exterior

Autolamp with rainlamp feature

Door handles – Body-color

Fog lamps

Mirrors – PowerScope® power-telescoping/-folding trailer tow with power/heated glass, heated manual spotter mirrors, and integrated clearance lamps and turn signals

SecuriCode™ keyless entry keypad

Available Options

Mechanical

6.7L Power Stroke V8 Turbo Diesel B20-capable engine (F-350 only)

Alternators – Dual with 357-amp total (diesel engine only)

Engine block heater (standard in 15 cold-weather states)

Fuel tank – 28-gallon midship (n/a with 200" WB Crew Cab with gas engines)

Jack – 2-ton mechanical (F-350 SRW)

Jack – 4-ton hydraulic (F-350 DRW)

Jack – 6-ton hydraulic (F-450/F-550)

Power take-off (PTO) provision (6.7L diesel engine only; includes transmission-mounted live-drive and stationary modes)

Rear axle – Electronic-locking (F-350 SRW only)

Rear axle – Limited-slip (DRW only)

Rear view camera and prep kit

Spare tire/wheel/jack

Tire Pressure Monitoring System delete (Fleet only)

LT245/75R17E all-terrain BSW tires – 6 (F-350 DRW)

LT245/75R17E all-terrain OWL tires – 4 (F-350 DRW)

LT275/70R18E all-terrain BSW tires – 4 (F-350 SRW 4x4)

LT275/70R18E all-terrain OWL tires – 4 (F-350 SRW 4x4)

225/70Rx19.5G BSW traction tires – 2 all-season tires and 4 traction tires (F-450/F-550)

225/70Rx19.5G max. traction BSW tires – 6 (F-450/F-550 4x4 only)

Seating

Premium leather-trimmed 40/20/40 split front seat with center under-seat lockable storage with 12-volt powerpoint, and center armrest with cupholders and storage

Heated rear outboard seats (Crew Cab only; requires LARIAT Interior Package)

Interior

Flooring – All-weather floor mats

Navigation System with HD Radio™ Technology and 5-years of SiriusXM Traffic and Travel Link®

Rapid-heat supplemental cab heater (requires diesel engine and alternator upgrade; standard in 15 cold-weather states)

Exterior

Cab steps – 6" angular black molded

Center high-mounted stop lamp (required for vehicles with GVWR less than 10,000 lbs.)

Exterior back-up alarm¹

Ford Telematics™ powered by Telogis®¹ – Fleet tracking system (includes 1 year of service)

Four-corner strobe (Fleet only)

Remote Start System

Splash guards/mud flaps (F-350 only; front only)

Transfer case skid plate (4x4 only)

Available Packages

LARIAT Interior Package includes power, heated/cooled driver's seat with easy entry/exit memory feature; power, heated/cooled passenger seat; memory PowerScope trailer tow mirrors; memory, power-adjustable pedals; and Remote Start System

16,000-lb. GVWR Package (F-450 only)

CNG/Propane Gaseous Engine Prep Package (F-350 with 6.2L gas engine only) includes hardened engine intake valves and valve seats and bi-fuel manifold

Extra-Heavy-Service Front Suspension Package (restrictions apply) includes 2-up front springs upgrade (unless maximum springs have been computer selected as included equipment)

Heavy-Service Front Suspension Package (restrictions apply) includes 1-up front springs upgrade (unless maximum springs have been computer selected as included equipment)

High-Capacity Trailer Tow Package (F-450/F-550 only; requires diesel engine; restrictions apply) includes 30,000-lb. GCWR for F-450 and 35,000-lb. GCWR for F-550, upgraded rear-axle gear set and trailer brake wiring (trailer brake controller not included)

Low Deflection Package (F-450/F-550 only; n/a on 141" WB) includes 2" spacer blocks; recommended for rear-biased loading

Payload Downgrade Package (F-350 SRW/F-450/F-550 only) includes a 10,000-lb. GVWR rating for F-350 SRW with 18" wheels, a 15,000-lb. GVWR rating for F-450 and a 17,500-lb. GVWR rating for F-550

Payload Plus Upgrade Package (F-550 with 4.88 limited-slip [LS] axle only; restrictions apply) increases GVWR to 19,500 lbs. and includes upgraded frame, rear axle and springs

Snow Plow Prep Package (restrictions apply) includes computer-selected springs for snow plow application and extra-heavy-duty alternator with diesel engine only

¹Ford Licensed Accessory. See your dealer for limited warranty details.



18" Bright-Machined Cast-Aluminum
Standard: F-350 SRW



17" Polished Forged-Aluminum
Standard: F-350 DRW



19.5" Polished Forged-Aluminum
Standard: F-450/F-550 DRW

EXTERIORS



White Platinum Metallic Tri-coat



Oxford White



Ingot Silver*



Race Red



Ruby Red Metallic Tinted Clearcoat



Bronze Fire*



Blue Jeans*



Caribou*



Magnetic*



Green Gem*



Shadow Black

*Metallic.

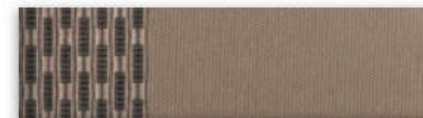
INTERIORS



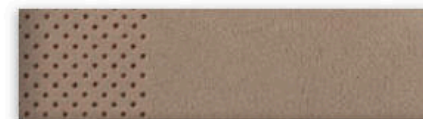
1 Steel HD Vinyl



2 Steel Cloth



3 Adobe Cloth



4 Adobe Leather



5 Charcoal Black Leather

	Regular Cab	SuperCab	Crew Cab	40/20/40 split front seat	40/mini-console/40 front bucket seats	40/console/40 front bucket seats
XL	<input type="checkbox"/>	<input type="checkbox"/>	<input type="checkbox"/>	<input checked="" type="checkbox"/>	<input type="checkbox"/>	<input type="checkbox"/>
XLT	<input type="checkbox"/>	<input type="checkbox"/>	<input type="checkbox"/>	<input checked="" type="checkbox"/>	<input type="checkbox"/>	<input type="checkbox"/>
LARIAT	<input type="checkbox"/>	<input type="checkbox"/>	<input type="checkbox"/>	<input type="checkbox"/>	<input type="checkbox"/>	<input checked="" type="checkbox"/>

■ Standard □ Optional

Exteriors	Interiors		
	XL	XLT	LARIAT
White Platinum Metallic Tri-coat ¹			4 5
Oxford White	1 2	2 3	4 5
Ingot Silver	1 2	2	5
Race Red	1 2	2 3	4 5
Ruby Red Metallic Tinted Clearcoat ¹		3	4 5
Bronze Fire		3	4 5
Blue Jeans	1 2	2 3	4 5
Caribou	1 2	2 3	4 5
Magnetic	1 2	2	5
Green Gem	1 2	2 3	4 5
Shadow Black	1 2	2 3	4 5

¹Additional charge. Colors are representative only. See your dealer for actual paint/trim options.



TECHNICAL SPECIFICATIONS

ENGINES

	6.7L V8 Power Stroke® Turbo Diesel	6.2L 2-Valve Gas V8 FFV¹	6.8L 3-Valve Gas V10
Configuration	OHV (32-valve)	SOHC	SOHC
Fuel injection	High-pressure common-rail	Sequential electronic	Sequential electronic
Engine control system	Electronic	Electronic	Electronic
Induction system	Single-sequential turbocharger with charged air cooler	Specially tuned	Specially tuned
Battery	Dual 12-volt; 750-CCA/78-amp-hr	12-volt; 650-CCA/72-amp-hr	12-volt; 750-CCA/78-amp-hr
Alternator	200-amp (dual combined 357-amp, optional)	157-amp	175-amp
Cooling system	Pressurized series flow	Pressurized series flow	Pressurized series flow
Oil-life monitor	Intelligent Oil-Life Monitor®	Oil-minder system	Oil-minder system
Cylinders	8	8	10
Cylinder head	Aluminum	Aluminum	Aluminum
Block material	Compacted graphite iron	Cast iron	Cast iron
Valve operation	Push rod/rocker arms	Roller-rocker shafts	Hydraulic roller
Camshaft drive	Gear	Silent chain	Silent chain
Bore	3.90"	4.02"	3.55"
Stroke	4.25"	3.74"	4.17"
Compression ratio	16.2:1	9.8:1	9.2:1
Horsepower @ rpm	300 @ 2,800	385 @ 5,500	362 @ 4,750
Torque lb.-ft. @ rpm	660 @ 1,600	405 @ 4,500	457 @ 3,250
Recommended fuel	Ultra-Low-Sulfur Diesel or B20 (containing 20% or less biodiesel)	Regular unleaded or E85	Regular unleaded

TRANSMISSIONS

Type	6-speed TorqShift® automatic with SelectShift® (6.7L diesel, 6.2L gas)		5-speed TorqShift automatic (6.8L gas)
Case material	Aluminum		Aluminum
PTO	Live-drive access on driver's side (diesel only)		Access on driver's side
Gear ratios	1st	3.97:1	3.11:1
	2nd	2.31:1	2.20:1
	3rd	1.51:1	1.55:1
	4th	1.14:1	1.00:1
	5th	0.85:1	0.71:1
	6th	0.67:1	—
	Reverse	3.12:1	2.88:1

5TH-WHEEL TOWING — MAXIMUM LOADED TRAILER WEIGHT RATINGS (LBS.)²

Engine	Axle Ratio	GCWR	F-350 SRW 4x2	F-350 DRW 4x2	F-350 SRW 4x4	F-350 DRW 4x4	F-450 DRW 4x2	F-450 DRW 4x4	F-550 DRW 4x2	F-550 DRW 4x4
Regular Cab 6.2L 2-valve Gas V8 FFV	3.73	19,000	12,400	—	12,100	—	—	—	—	—
	4.30	19,500	—	12,400	—	12,000	—	—	—	—
6.8L 3-valve Gas V10	4.88	22,000	15,400	—	15,100	—	—	—	—	—
	4.88	22,500	—	15,400	—	15,000	—	—	—	—
6.7L Diesel V8	3.73	26,000	—	—	—	—	18,300	18,000	18,300	18,000
	4.10	23,500	16,200	—	15,700	—	—	—	—	—
		24,500	—	16,600	—	16,200	—	—	—	—
	4.30	24,500	—	16,600	—	16,200	—	—	—	—
		26,000	—	—	—	—	17,600	17,200	17,600	17,200
4.88	30,000 ³	—	—	—	—	21,600	21,200	26,600	26,200	
SuperCab 6.2L 2-valve Gas V8 FFV	3.73	35,000	—	—	—	—	—	26,600	26,200	26,100
	4.30	35,000 ³	—	—	—	—	—	26,400	26,100	26,100
6.8L 3-valve Gas V10	4.88	26,000	—	—	—	—	17,900	17,600	17,900	17,600
6.7L Diesel V8	3.73	19,000	12,100	—	11,700	—	—	—	—	—
	4.10	19,500	—	12,000	—	11,600	—	—	—	—
		24,500	—	16,300	—	15,800	—	—	—	—
	4.30	24,500	—	16,300	—	15,800	—	—	—	—
		26,000	—	—	—	—	17,100	16,700	17,100	16,700
4.88	30,000 ³	—	—	—	—	21,100	20,700	26,100	25,700	
Crew Cab 6.2L 2-valve Gas V8 FFV	3.73	35,000 ³	—	—	—	—	—	—	26,100	25,700
	4.30	35,000 ³	—	—	—	—	—	—	25,900	25,600
6.8L 3-valve Gas V10	4.88	26,000	—	—	—	—	17,700	17,300	17,700	17,300
6.7L Diesel V8	3.73	19,000	11,900	—	11,400	—	—	—	—	—
	4.10	19,500	—	11,800	—	11,400	—	—	—	—
		24,500	—	16,000	—	15,600	—	—	—	—
	4.30	24,500	—	16,000	—	15,600	—	—	—	—
		26,000	—	—	—	—	16,900	16,500	16,900	16,500
4.88	30,000 ³	—	—	—	—	20,900	20,500	25,900	25,500	
Regular Cab 6.2L 2-valve Gas V8 FFV	3.73	35,000	—	—	—	—	—	—	25,900	25,400
	4.30	35,000 ³	—	—	—	—	—	—	25,700	25,400

¹Certified to SAE J1349. ²F-350 DRW/F-450/F-550 weights shown are for 141" wheelbase Regular Cab, 162" wheelbase SuperCab or 176" wheelbase Crew Cab models. For 165", 186", 189", 200" and 201" wheelbase models, weights may be somewhat less (usually not more than 200 lbs., or 400 lbs. with 201" wheelbase). ³Requires optional High-Capacity Trailer Tow Package.

Load rating represents maximum allowable weight of people, cargo and body equipment and is reduced by the weight of optional equipment.

5th-Wheel Towing Notes: Trailer weights shown assume 875 lbs., 1,000 lbs. second-unit body weight. Be sure combined weight of vehicle and trailer does not exceed listed GCWR. Trailer kingpin weight should be 15–25% of total loaded trailer weight. Make sure that the vehicle payload (reduced by option weight) will accommodate trailer kingpin weight and the weight of passengers and cargo added to the towing vehicle. The addition of trailer kingpin weight, and the weight of passengers and cargo, cannot cause vehicle weights to exceed the rear GAWR (Gross Axle Weight Rating) or GVWR (Gross Vehicle Weight Rating). These ratings can be found on the vehicle's Safety Compliance Certification Label. See your Ford Dealer for conventional trailer weights.



TECHNICAL SPECIFICATIONS

DIMENSIONS & WEIGHTS

	Regular Cab											
	F-350 SRW 4x2/4x4	F-350 DRW 4x2/4x4	F-350 DRW 4x2/4x4	F-450 DRW 4x2/4x4	F-450 DRW 4x2/4x4	F-450 DRW 4x2/4x4	F-450 DRW 4x2/4x4	F-550 DRW 4x2/4x4	F-550 DRW 4x2/4x4	F-550 DRW 4x2/4x4	F-550 DRW 4x2/4x4	
Wheelbase	140.8"	140.8"	164.8"	140.8"	164.8"	188.8"	200.8"	140.8"	164.8"	188.8"	200.8"	
Cab-to-axle	60"	60"	84"	60"	84"	108"	120"	60"	84"	108"	120"	
Exterior												
Height												
Top of cab to ground	76.9"/79.9"	77.3"/80.3"	77.3"/80.3"	80.3"/80.4"	80.4"	80.6"/80.4"	80.6"/80.5"	80.4"/80.5"	80.7"/80.5"	80.7"	80.9"/80.7"	
Top of frame to ground	32.0"/34.2"	32.6"/34.7"	32.3"/34.2"	33.2"/33.4"	33.0"	32.8"/32.9"	32.8"	33.7"/33.8"	33.4"	33.3"/33.2"	33.2"	
Width												
Between frame rails	34.1"	34.1"	34.1"	34.2"	34.2"	34.2"	34.2"	34.2"	34.2"	34.2"	34.2"	
Axle clearance	8.6"	8.2"/8.1"	8.2"	8.1"/8.0"	8.1"	8.1"/8.0"	8.1"	8.4"	8.4"	8.4"	8.4"	
Front track	68.3"	68.3"	68.3"	74.8"	74.8"	74.8"	74.8"	74.8"	74.8"	74.8"	74.8"	
Rear tire outside width	79.6"	92.2"	92.2"	93.9"	93.9"	93.9"	93.9"	93.9"	93.9"	93.9"	93.9"	
Overall length	226.5"	226.5"	250.5"	226.5"	250.5"	274.5"	286.5"	226.5"	250.5"	274.5"	286.5"	
Interior (front/rear)												
Head room	40.7"/-	40.7"/-	40.7"/-	40.7"/-	40.7"/-	40.7"/-	40.7"/-	40.7"/-	40.7"/-	40.7"/-	40.7"/-	
Shoulder room	68.0"/-	68.0"/-	68.0"/-	68.0"/-	68.0"/-	68.0"/-	68.0"/-	68.0"/-	68.0"/-	68.0"/-	68.0"/-	
Hip room	67.6"/-	67.6"/-	67.6"/-	67.6"/-	67.6"/-	67.6"/-	67.6"/-	67.6"/-	67.6"/-	67.6"/-	67.6"/-	
Leg room (max.)	43.3"/-	43.3"/-	43.3"/-	43.3"/-	43.3"/-	43.3"/-	43.3"/-	43.3"/-	43.3"/-	43.3"/-	43.3"/-	
Weights (lbs.)												
Max. GVWR ²	11,000/11,100	14,000	14,000	16,500	16,500	16,500	16,500	19,500	19,500	19,500	19,500	
Max. payload ²	4,723/4,360	7,872/7,541	7,872/7,440	9,945/9,651	9,815/9,495	9,575/9,223	9,486/9,188	12,300/11,973	12,660/12,321	12,471/12,150	12,410/12,049	

SuperCab						Crew Cab					
F-350 SRW 4x2/4x4	F-350 DRW 4x2/4x4	F-450 DRW 4x2/4x4	F-450 DRW 4x2/4x4	F-550 DRW 4x2/4x4	F-550 DRW 4x2/4x4	F-350 SRW 4x2/4x4	F-350 DRW 4x2/4x4	F-450 DRW 4x2/4x4	F-450 DRW 4x2/4x4	F-550 DRW 4x2/4x4	F-550 DRW 4x2/4x4
161.8"	161.8"	161.8"	185.8"	161.8"	185.8"	176.2"	176.2"	200.2"	176.2"	200.2"	200.2"
60"	60"	60"	84"	60"	84"	60"	60"	60"	84"	60"	84"
76.7"/79.7"	77.0"/80.1"	80.3"	80.4"	80.4"	80.5"	77.7"/80.5"	78.0"/80.8"	80.6"	80.6"	80.8"	80.9"/80.8"
31.7"/33.5"	32.2"/34.1"	32.9"/32.8"	32.8"/32.7"	33.4"/33.3"	33.3"/33.2"	31.4"/33.3"	32.1"/34.0"	32.9"/32.8"	32.8"/32.7"	33.3"	33.2"
34.1"	34.1"	34.2"	34.2"	34.2"	34.2"	34.1"	34.1"	34.2"	34.2"	34.2"	34.2"
8.6"	8.2"	8.0"	8.0"	8.4"	8.4"	8.6"	8.2"	8.0"	8.0"	8.4"	8.4"
68.3"	68.3"	74.8"	74.8"	74.8"	74.8"	68.3"	68.3"	74.8"	74.8"	74.8"	74.8"
79.6"	92.2"	93.9"	93.9"	93.9"	93.9"	79.6"	92.2"	93.9"	93.9"	93.9"	93.9"
247.5"	247.5"	247.5"	271.5"	247.5"	271.5"	261.9"	261.9"	261.9"	285.9"	261.9"	285.9"
40.7"/38.1"	40.7"/38.1"	40.7"/38.1"	40.7"/38.1"	40.7"/38.1"	40.7"/38.1"	40.7"/40.8"	40.7"/40.8"	40.7"/40.8"	40.7"/40.8"	40.7"/40.8"	40.7"/40.8"
68.0"/68.1"	68.0"/68.1"	68.0"/68.1"	68.0"/68.1"	68.0"/68.1"	68.0"/68.1"	68.0"	68.0"	68.0"	68.0"	68.0"	68.0"
67.6"/67.3"	67.6"/67.3"	67.6"/67.3"	67.6"/67.3"	67.6"/67.3"	67.6"/67.3"	67.6"	67.6"	67.6"	67.6"	67.6"	67.6"
43.3"/31.6"	43.3"/31.6"	43.3"/31.6"	43.3"/31.6"	43.3"/31.6"	43.3"/31.6"	43.3"/42.1"	43.3"/42.1"	43.3"/42.1"	43.3"/42.1"	43.3"/42.1"	43.3"/42.1"
11,500	14,000	16,500	16,500	19,500	19,500	11,500	14,000	16,500	16,500	19,500	19,500
4,772/4,323	7,619/7,126	9,523/9,194	9,269/8,991	12,382/12,012	12,214/11,924	4,496/4,057	7,361/6,932	9,325/8,977	9,197/8,846	12,250/11,800	12,015/11,691

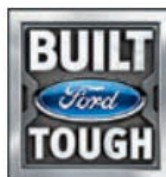
SRW = single rear wheel DRW = dual rear wheel

MECHANICAL

Front Suspension	
Type	Twin-I-Beam (F-350 4x2); solid Twin-Coil Monobeam axle (F-350 4x4, F-450/F-550)
Axle (rating @ ground)	5,250 lbs. (F-350 4x2); 6,000 lbs. (F-350 4x4); 7,000 lbs. (F-450/F-550)
Springs	Coil
Shock absorbers	1.38" gas type
Stabilizer bar	Standard
Rear Suspension	
Type	Solid axle
Axle (rating @ ground)	7,280 lbs. (F-350 SRW); 9,750 lbs. (F-350 DRW); 13,660 lbs. (F-450/F-550)
Springs	Leaf
Shock absorbers	1.38" gas type
Stabilizer bar	Standard
Steering	
Type	Parallel linkage (F-350 4x2); cross-tie linkage (4x4 and F-450/F-550 4x2)
Assist	Power
Overall ratio	20.49:1 (F-350 4x2); 20.41:1 (F-350 4x4); 17.8:1 average (F-450/F-550)
Brakes	
Type	Power 4-wheel vented-disc ABS (standard)
Front	
Rotor diameter	14.29" (F-350); 14.53" (F-450/F-550)
Lining area (sq. in.)	59.7 (F-350); 55.6 (F-450/F-550)
Rear	
Rotor diameter	14.29" (F-350); 15.35" (F-450/F-550)
Lining area (sq. in.)	45.8 (F-350); 55.6 (F-450/F-550)
Wheels	
Type	Steel (standard); aluminum (optional)
Size	17" SRW/DRW, 18" SRW (F-350); 19.5" (F-450/F-550)
Number of studs	8 (F-350); 10 (F-450/F-550)
Bolt-circle diameter	6.69" (F-350 SRW); 7.87" (F-350 DRW); 8.85" (F-450/F-550)

¹Ambulance Prep Package F-350 DRW: tire front track is 74.1"; rear tire outside width is 95.2." ²When properly equipped.





ford.com/commercial-trucks/chassis-cab/

New Vehicle Limited Warranty. We want your Ford F-Series Super Duty® Chassis Cab ownership experience to be the best it can be. Under this warranty, your new vehicle comes with 3-year/36,000-mile bumper-to-bumper coverage, 5-year/60,000-mile Powertrain Warranty coverage, 5-year/60,000-mile safety restraint coverage, and 5-year/unlimited-mile corrosion (perforation) coverage – all with no deductible. The Ford 6.7L Power Stroke® diesel engine gets 5-year/100,000-mile warranty coverage. Please ask your Ford Dealer for a copy of this limited warranty.

Roadside Assistance. Covers your vehicle for 5 years or 60,000 miles, so you have the security of knowing that help may be only a phone call away should you run out of fuel, lock yourself out of the vehicle or need towing. Your Ford Dealer can provide complete details on all of these advantages.

Business Preferred Network. Each of the select dealerships in our Business Preferred Network (BPN) is committed to providing quality commercial-oriented products and service, as well as special financing and billing arrangements, to businesses that rely on Ford products. As a BPN customer, your business vehicles receive priority service at your BPN dealership to help get your vehicle back on the road quickly.

Financial Services. Our commercial purchase plans and lines of credit offer attractive rates, negotiable terms and business-friendly options. If you prefer to lease, our CommercialLease™ programs offer a wide variety of package options to meet your needs. For additional information, please visit our website at fordcredit.com/comlend.

Ford Credit. Get the ride you want. Whether you plan to lease or finance, you'll find the choices that are right for you at Ford Credit. Ask your Ford Dealer for details or check us out at fordcredit.com.

Ford Extended Service Plan. For a purchase or lease, the Ford Extended Service Plan (ESP) gives you peace-of-mind protection designed to cover key vehicle components and protect you from the cost of unexpected repairs. Ask your dealer for a Ford ESP, the only service contract backed exclusively by Ford and honored at all Ford dealerships.

Comparisons based on competitive models (Class 3-5 Conventional Chassis Cabs), publicly available information and Ford certification data at time of release. Vehicles may be shown with optional and aftermarket equipment. Features may be offered only in combination with other options or subject to additional ordering requirements/limitations. Dimensions and capacity ratings shown may vary due to optional features and/or production variability. Information is provided on an "as is" basis and could include technical, typographical or other errors. Ford makes no warranties, representations, or guarantees of any kind, express or implied, including but not limited to, accuracy, currency, or completeness, the operation of the information, materials, content, availability, and products. Ford reserves the right to change product specifications, pricing and equipment at any time without incurring obligations. Your Ford Dealer is the best source of the most up-to-date information on Ford vehicles. Body manufacturers are responsible for compliance certification of the completed vehicle. The Ford New Vehicle Limited Warranty and any government certification made by Ford shall cover only the vehicle as manufactured by Ford and shall not extend to any addition, modification or change of or to the vehicle by the Ford Authorized Pool Account.

HD Radio is a proprietary trademark of iBiquity Digital Corp. iPhone is a trademark of Apple Inc., registered in the U.S. and other countries. SiriusXM services require a subscription, sold separately by SiriusXM after trial period. Fees and taxes apply. All fees and programming subject to change. Sirius satellite service is available only to those in the 48 contiguous USA, D.C. and PR (with coverage limitations). Our Internet radio service is available throughout our satellite service area and in AK and HI. Some channels not available in all lineups. Sirius, XM and all related marks and logos are trademarks of Sirius XM Radio Inc. Sony is a registered trademark of the Sony Corporation. The Bluetooth word mark is a trademark of the Bluetooth SIG, Inc.

Follow Ford:

