

INNOVATION TO ACHIEVE MORE.

## 2013 GMC ACADIA

WE ARE PROFESSIONAL GRADE.

**GMC**



# 2013 GMC ACADIA

GMC is dedicated to pushing the limits of what's possible. Our commitment is to one ideal: building professional-grade vehicles that are engineered to offer the best in performance, innovation and versatility. Like you, GMC believes that just being good enough is never enough and jobs worth doing are worth doing right.

It's why the 2013 Acadia is a crossover without compromise. Designed to offer room for up to eight, its spacious interior can quickly transform to open up more cargo capacity than any competitor in its class. Power, refinement and advanced technologies combine to elevate Acadia above the ordinary.

GMC. Engineering that never says never.

MODELS	pg. 2
ACADIA DENALI	pg. 3
ACADIA TECHNOLOGY	pg. 6
ACADIA SLT	pg. 8
FEATURES & BENEFITS	pg. 12
COLOR & TRIM	pg. 24
ACCESSORIES	pg. 26
EQUIPMENT OPTIONS	pg. 27





ACADIA DENALI IN WHITE DIAMOND TRICOAT (left)  
ACADIA SLT IN CRYSTAL RED TINTCOAT (right)  
Vehicles shown with available equipment.



ACADIA DENALI IN WHITE DIAMOND TRICOAT shown with available equipment.

## ACADIA DENALI

# A CROSSOVER WITHOUT COMPROMISE.

The Denali name signifies a level of design and craftsmanship that is at the pinnacle of GMC engineering. Acadia Denali combines premium materials, distinctive style and advanced technologies to make this the premier choice in the crossover category.

### DENALI FEATURES

For details, see corresponding page listed below.

HID Projector Low Beams	pg. 15	Chrome-Accented Bodyside Molding	pg. 28
LED Daytime Running Lamps	pg. 15	Chrome Roof Rails	pg. 28
20" Machined Aluminum Wheels	pg. 24	Signature Denali Grille	pg. 28



#### DUAL FLOW-THROUGH EXHAUST [upper]

Integrated into the rear profile of Acadia Denali is a pair of chrome outlets for a dual flow-through design.

#### HID HEADLAMPS [center]

High Intensity Discharge (HID) projector low beams and LED daytime running lamps increase visibility and give Acadia Denali a jewel-like necklace of illumination.

#### DENALI GRILLE [lower]

The distinctive honeycomb pattern of its chrome grille is a signature detail unique to the Denali series, GMC's top-of-the-line models.



#### FRENCH SEAM STITCHING (upper)

What does refinement feel like? In Acadia Denali, it's the supple touch of perforated leather appointments on the first- and second-row seats, and the precise detailing of contrasting French seam stitching. Available seating shown.

#### WOOD-TRIMMED STEERING WHEEL (lower)

Denali's standard leather-wrapped, mahogany wood-trimmed steering wheel lets you come to grips with sophisticated style.

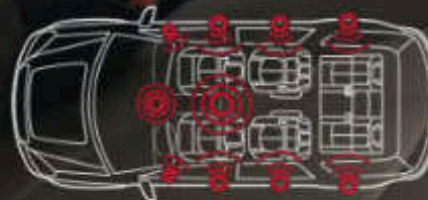
## ACADIA DENALI INTERIOR PREMIUM AMENITIES. PRICELESS SILENCE.

GMC engineers made the Denali cabin remarkably spacious, quiet and comfortable, then gave it innovative features like our unique Head-Up Display that projects key information onto the windshield, so you can keep your eyes on the road ahead.

#### DENALI INTERIOR FEATURES

For details, see corresponding page number listed below.

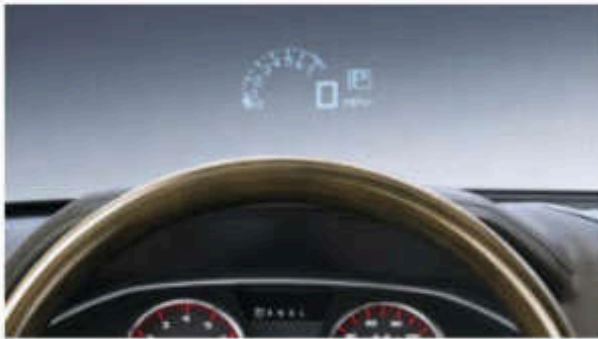
Acoustic Package	pg. 16	Mahogany Wood-Trimmed Steering Wheel	pg. 27
Heated and Cooled Front Seats	pg. 27	Perforated Leather-Appointed Seating	pg. 27



■ For optimum listening pleasure, the Bose® sound system for Acadia Denali features 10 speakers strategically located throughout the cabin. Available digital 5.1 surround technology unlocks the benefits of digital recordings to make music sound full and detailed.



ACADIA DENALI INTERIOR IN COCOA DUNE shown with available equipment.



#### HEAD-UP DISPLAY (upper)

This available cockpit-inspired gauge readout projects directly onto the windshield, tracking speed, engine rpm, outside air temperature and more.

#### TOUCH-SCREEN NAVIGATION<sup>1</sup> (center)

The available DVD-based Touch-Screen Navigation System offers advanced mapping capabilities in 2-D or 3-D view and includes 3 months of XM NavTraffic<sup>2</sup> giving you construction, road closure and accident reports in real time.

#### REAR-VISION CAMERA (lower)

The touch-screen display is also a monitor for the Rear-Vision Camera. It provides a wide view behind the vehicle when backing up.

## ACADIA TECHNOLOGY DRIVE SMARTER.

Before you even drive it, technology is making your Acadia more intelligent, thanks to the available Remote Vehicle Start feature. Once inside, an available in-dash Navigation System helps you find your way. An available Rear-Seat Entertainment System that includes game console inputs and two sets of wireless infrared headphones lets passengers seated in the rear engage in a host of entertainment options.

#### ACADIA TECHNOLOGY FEATURES

For details, see corresponding page number listed below.

Available IntelliLink <sup>3</sup>	pg. 18	OnStar <sup>4</sup>	pg. 21
Color Touch Radio	pg. 18	Available Technology Package	pg. 27

<sup>1</sup>Full functionality requires compatible Bluetooth<sup>®</sup> and smartphone. Some devices require USB connectivity. <sup>2</sup>Visit [onstar.com](http://onstar.com) for details and system limitations. <sup>3</sup>Map coverage available in the United States, U.S. Virgin Islands, Puerto Rico and Canada. <sup>4</sup>You subscribe after your trial period. Subscriptions are continuous until you call SiriusXM to cancel. See SiriusXM Customer Agreement for complete terms and geographic limitations at [siriusxm.com](http://siriusxm.com). Other fees and taxes will apply. All fees and programming subject to change. For more information about NavTraffic, visit [siriusxm.com/navtraffic](http://siriusxm.com/navtraffic).



ACADIA DENALI INTERIOR IN COCOA DUNE shown with available equipment.

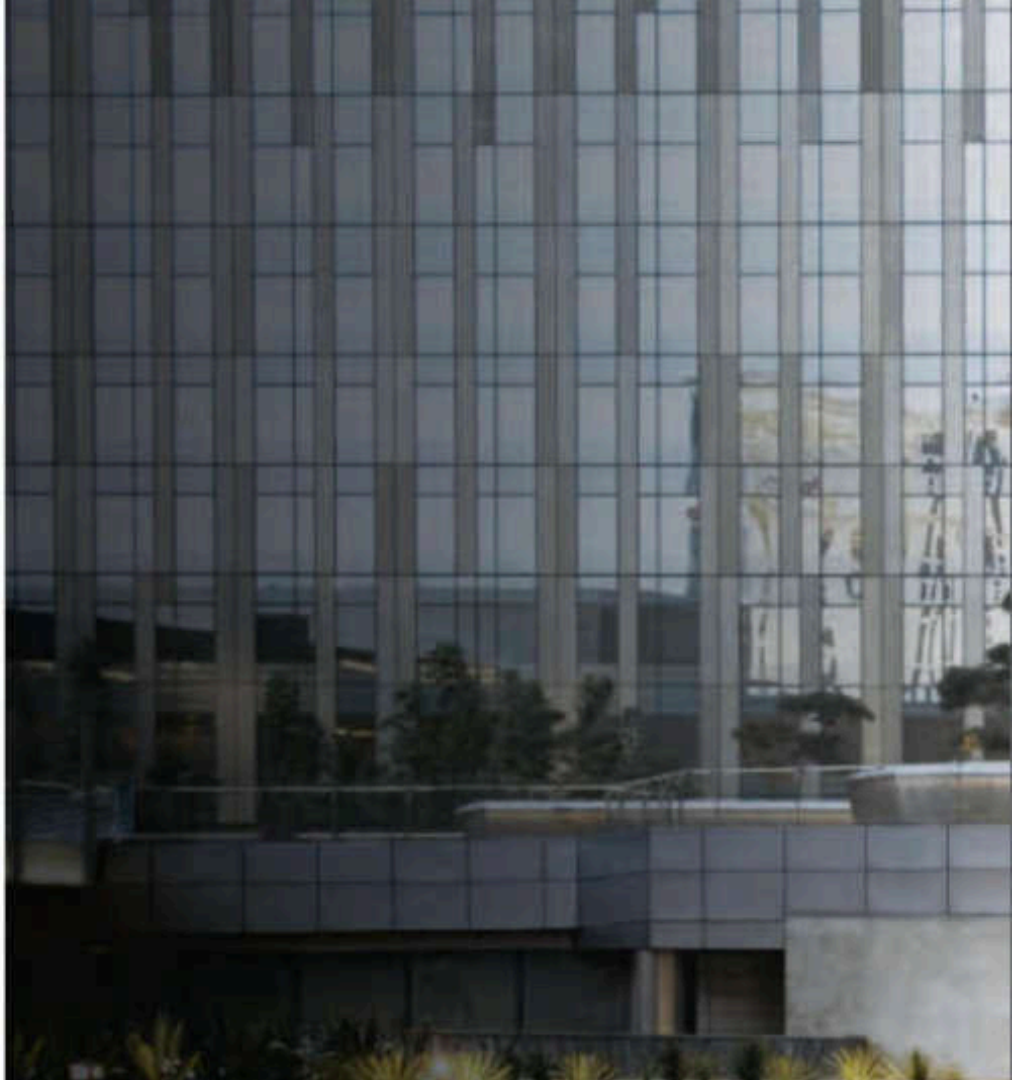


**WRAPAROUND REAR GLASS** (above)

Acadia's rear glass provides a clean, streamlined look.

**REAR TAILLAMPS** (above)

Enhanced dynamic styling with LED technology provides more energy efficiency than traditional lights.



**ACADIA SLT**  
**SCULPTED TO PERFORM.**

Acadia's sculpted surfaces reflect what lies beneath: a vehicle that combines power and versatility to help you get more done more easily. Under the hood is a 288-hp 3.6L V-6 that uses direct-injection technology to deliver 24 mpg hwy.<sup>1</sup> At each wheel, StabiliTrak<sup>®</sup> improves safety, stability and control in most driving conditions by adjusting engine speed and brake pressure to help you keep on track. Inside the cabin, welcome three rows of passengers in luxurious comfort, or use its competition-leading maximum cargo space<sup>2</sup> to carry out your weekend plans.

**ACADIA SLT EXTERIOR FEATURES**

For details, see corresponding page number listed below.

Available Heated Power Retractable Mirrors	pg. 15	LED Daytime Running Lamps	pg. 15
Available HID Headlamps	pg. 15	Low Step-In/Lift-Over Height	pg. 15

<sup>1</sup>EPA estimated. <sup>2</sup>Cargo and load capacity limited by weight and distribution.



ACADIA SLT IN CRYSTAL RED TINTCOAT shown with available equipment.



ACADIA SLT INTERIOR IN EBONY shown with available equipment.



## ACADIA SLT INTERIOR SEAT EIGHT. SATISFY ALL.

Acadia is offered with a second-row bench seat that lets you seat up to eight full-size adults, or you can choose your second row with a pair of captain's chairs for seven-passenger seating. Offering the convenience of one-handed operation, Smart Slide seating quickly creates 18 inches of forward travel for generous access to the third row.

### ACADIA SLT INTERIOR FEATURES

For details, see corresponding page number listed below.

Smart Slide Seating	pg. 16	Ultrasonic Rear Parking Assist	pg. 18
Rear-Vision Camera	pg. 19	Leather-Wrapped Steering Wheel	pg. 27



ACADIA SLT IN CRYSTAL RED TINTCOAT shown with available equipment.

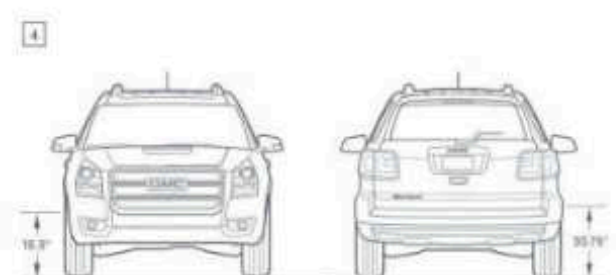




ACADIA DENALI IN WHITE DIAMOND TRICOAT shown with available equipment.

# DESIGN FEATURES

At GMC, our designers started the exercise of forming the proportions of Acadia with a clear understanding of the functional requirements you demand from a premium crossover. Once they created a design able to embody spacious comfort, a smooth ride and flexible seating and cargo configurations, then came the exquisite details, from the jewel-like headlamps to the dazzling chrome accents.



**1 HIGH-INTENSITY DISCHARGE HEADLAMPS** The available xenon low-beam headlamps (standard on Denali) project a brighter, whiter light for better illumination and greater contrast than conventional headlamps. This brighter beam is also more focused, so that more of its lighting power is used to illuminate your path.

**LED DAYTIME RUNNING LAMPS** Acadia's daytime running lamps and taillamps use new LED technology to bring dynamic necklace styling, improved visibility and energy efficiency.

**2 PROJECTOR BEAM FOG LAMPS** In driving conditions where high beams are impractical, projector beam fog lamps provide a focused, brighter light that can give you an extra measure of confidence.

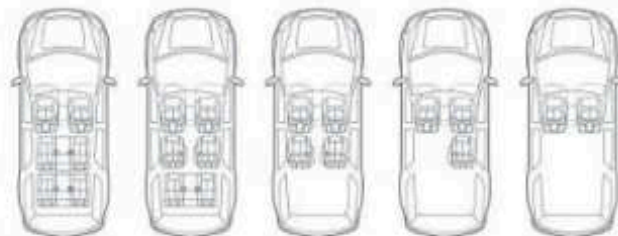
**3 HEATED POWER-RETRACTABLE MIRRORS** Heated to remove snow, frost and fogging, these available power mirrors offer excellent visibility and extra clearance. On SLE models, they have a black grain finish and fold manually. SLT-1 mirrors are body color and manual folding. On SLT-2 and Denali models, they are color-matched to the body and power fold. Shown with available Side Blind Zone Alert.

**HIGH-ROOF, FIVE-DOOR DESIGN** To comfortably accommodate up to eight passengers, the high-roof design creates generously sized doors and a spacious third row for adults with ample head room and shoulder room for long-distance comfort.

**4 LOW STEP-IN HEIGHT AND LOW LIFT-OVER HEIGHT** Acadia is engineered to take the work out of typical tasks, such as loading cargo or carrying passengers. The low height of the rear bumper makes loading luggage or heavy objects easier, while the low step-in height lets people of every size enter without climbing extra steps.

# INTERIOR FEATURES

We know your expectations are high when it comes to the quality and character of your vehicle's interior. That's why Acadia is designed to surround you with premium materials that elevate the Acadia driving experience. Then, and with its extensive list of advanced technologies, Acadia makes it easy to get more done.



## SEATING CONFIGURATIONS

GMC leaves the final passenger list to you. When you choose eight-passenger seating, you get a sliding second-row bench seat that fits three adults comfortably. If you choose the available seven-passenger configuration, the second row receives two captain's chairs. In either case, you get the convenience and space of fold-flat functionality from the tailgate to the front-row seatbacks.

## FOLD-FLAT FUNCTIONALITY

For the impressive capacity of a full-size SUV, the second- and third-row seats inside Acadia fold forward to create a flat, uninterrupted load floor. It's flexibility that gives you up to 116.1 cu. ft.\* of cargo capacity and lets you carry 4'x8' sheets of building material.

\*Cargo and load capacity limited by weight and distribution.

**SMART SLIDE SEATING** To make third-row entry and exit easier for people of many sizes, Acadia has Smart Slide second-row seating that slides the seats to their forward-most position with just one lever and one hand. Then seats fold up for space with the same action you would use for a beach chair.

## ACOUSTICS AND NOISE

**SUPPRESSION** To reduce road noise and control wind noise, Acadia uses sophisticated sound-blocking and sound-deadening techniques, including liquid-applied sound deadeners to fill even the most minute gaps and sound paths.

**CENTER CONSOLE** To help everything fall into place, Acadia's convenient and spacious center console gives you multiple storage compartments for the essentials you rely on every day. The center floor console offers deep, concealed storage for CDs or DVDs, MP3 players or other personal electronics. The padded armrest slides fore and aft to help you stay comfortable, regardless of your seating position.

**HEAD-UP DISPLAY** This available system projects important driving information at eye level. Speedometer and RPM readings, turn signal and high-beam indicators, transmission position, outside air temperature and, when equipped with a navigation radio, Turn-by-Turn Navigation information can all be seen without looking down.

## DRIVER INFORMATION CENTER

Staying in touch with the most important information is as easy as pressing a button. The Driver Information Center includes the odometer and A/B trip odometers, as well as a message center that keeps you informed about vital vehicle functions and driving conditions.

## TECHNOLOGY PACKAGE

Acadia Denali is the only crossover in its class that comes standard with a Head-Up Display. Inspired by fighter aircraft technology, it works by projecting important information at eye level, so you can monitor vital functions without looking down. Head-Up Display projects speed and rpm readings, turn signal and high-beam indicators, transmission selection, outside air temperature and, when equipped with the available navigation radio, Turn-By-Turn Navigation instructions.<sup>2</sup> Part of the Technology Package. It is available on SLT-2 models.

<sup>2</sup>Requires On-Star Directions & Connections Plan. Visit [onstar.com](http://onstar.com) for coverage map, details and system limitations. Standard for six months.





**8 CUPHOLDERS** Acadia has two console-mounted cupholders and two in the doors for driver and passenger. Additional cupholders are in the second row, with one in each door, plus two more are molded into the side panels for the third row.

**9 SILL PLATE** Step through the driver's or front passenger's door of Acadia Denali and its illuminated, satin chrome sill plates welcome you into a cabin filled with hints that you've crossed over into luxury.

**10 TRI-ZONE CLIMATE CONTROL** Acadia's available tri-zone climate control allows the driver and front-seat passenger to set separate temperatures for personalized comfort.

**11 REAR CONTROLS** Second-row passengers get their own controls included with the available tri-zone climate control system, so they're able to set the temperature and fan speed to their liking.

**POWER TILT AND TELESCOPING STEERING WHEEL** On Denali models, the power tilt and telescoping steering wheel moves up/down and in/out to make it easy to set the precise position you prefer.

**STEERING-WHEEL-MOUNTED RADIO CONTROLS** Access your audio system with your fingertips while you keep your eyes on the road. These available fingertip controls can also control most music search features of compatible MP3 and iPod® players, as well as the hands-free phone interface.

**REMOTE KEYLESS ENTRY** One touch is all it takes to lock or unlock your Acadia or flash its lights and sound the horn to help you locate it in a busy parking lot. It works at a range of up to 195 feet to unlock your doors for fast entry, saving you and your passengers from unwanted exposure to wind, rain, snow or sleet.

**REMOTE VEHICLE START** Warm up—or cool off—your Acadia for up to 10 minutes without leaving the house. This available feature is capable of starting your vehicle from up to 195 feet away, so your Acadia's interior will begin adjusting to your preset temperature. With tri-zone climate control, the system can automatically heat or cool the interior based on temperature settings.

**REMOTE POWER LIFTGATE** Loading up your Acadia with your hands full? Let us help you with that. The available power liftgate opens with a touch of your key fob for easier access to your Acadia's impressive cargo capacity. You can close it the same way, or use the fingertip button located on the liftgate or on the center console.

# TECHNOLOGY

With its advanced technologies, Acadia becomes an even more integral part of your life. At the center of it all is a Color Touch Radio System that links you to a host of entertainment and information sources. Auxiliary inputs transform the enjoyment for rear-seat passengers, while driver-oriented technologies like a Rear-Vision Camera System and Ultrasonic Rear Parking Assist come standard on every 2013 GMC Acadia.



## COLOR TOUCH RADIO SYSTEM

This standard entertainment system is based on a simple, intuitive 5.5" high-definition touch-screen Color Interface Display that makes it easy to find your most important information quickly. Not only does it include AM/FM/CD/HD Radio/SiriusXM<sup>®</sup> capabilities, but it also gives you a customizable home page and a USB<sup>®</sup> and auxiliary input for your MP3 player.

<sup>®</sup>Standard for three months. If you subscribe after your trial period, subscriptions are continuous until you call SiriusXM to cancel. See SiriusXM Customer Agreement for complete terms at [siriusxm.com](http://siriusxm.com). Other fees and taxes will apply. All fees and programming subject to change. <sup>™</sup>Not compatible with all devices.

**INTELLILINK<sup>®</sup>** Available with Color Touch Radio and included with Color Touch Navigation.<sup>†</sup> IntelliLink provides smartphone integration and voice-activated control of your communication and entertainment selections, including placing a telephone call, changing the station, streaming Internet radio stations Pandora<sup>®</sup> and Stitcher<sup>™</sup> SmartRadio through your smartphone or accessing your iPod<sup>®</sup> music library.

<sup>†</sup>Full functionality requires compatible Bluetooth and smartphone. Some devices require USB connectivity. Data plan rates apply. <sup>™</sup>Map coverage available in the United States, U.S. Virgin Islands, Puerto Rico and Canada.

## COLOR TOUCH NAVIGATION<sup>†</sup>

The available NAV system, which includes IntelliLink<sup>®</sup> adds more than just navigation to the screen of the standard high-definition Color Touch Radio. Multiple map views are also at your fingertips with the touch of an icon on the home screen. It also features 3 months of NavTraffic<sup>†</sup> and Local Forecast feature (in areas with this broadcast capability). With a USB<sup>®</sup> adaptor, the Color Touch Navigation System also allows a digital card reader to link with Photoviewer to review pictures from your camera or smartphone in the LCD display, as well as display album art (if available) when listening to music from your iPod<sup>®</sup>.

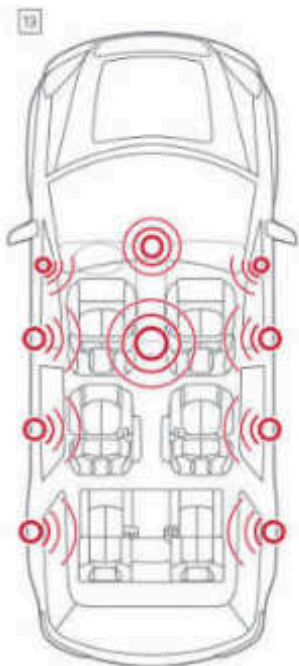
<sup>†</sup>Map coverage available in the United States, U.S. Virgin Islands, Puerto Rico and Canada. <sup>™</sup>Full functionality requires compatible Bluetooth and smartphone. Some devices require USB connectivity. If you subscribe after your trial period, subscriptions are continuous until you call SiriusXM to cancel. See SiriusXM Customer Agreement for complete terms at [siriusxm.com](http://siriusxm.com). Other fees and taxes will apply. All fees and programming subject to change. For more information about NavTraffic, visit [siriusxm.com/navtraffic](http://siriusxm.com/navtraffic). XM Satellite service is available only to those in the 48 contiguous USA and DC. <sup>™</sup>Not compatible with all devices.

**SIRIUSXM SATELLITE RADIO/NAVTRAFFIC<sup>†</sup>** Enjoy SiriusXM Satellite Radio in your Acadia with a 3-month trial subscription to the XM Premier Package. Only SiriusXM brings you more of what you love, all in one place. Get over 130 channels including commercial-free music, plus the best sports, news, talk, comedy and entertainment. With NavTraffic, you'll get continuously updated traffic information as it occurs, right on your vehicle's available navigation system. Welcome to the world of SiriusXM.

<sup>†</sup>If you subscribe after your trial period, subscriptions are continuous until you call SiriusXM to cancel. See SiriusXM Customer Agreement for complete terms at [siriusxm.com](http://siriusxm.com). Other fees and taxes will apply. All fees and programming subject to change. For more information about NavTraffic, visit [siriusxm.com/navtraffic](http://siriusxm.com/navtraffic). XM Satellite service is available only to those in the 48 contiguous USA and DC.

## MP3 PLAYBACK CAPABILITY

Bring the music and entertainment you love to your Acadia just by plugging your playback cable into the auxiliary input jack on your radio. Accommodates most MP3 players and devices, including many smartphones.



**10 10-SPEAKER BOSE® AUDIO SYSTEM** The available Bose systems are engineered to give you the realism and presence of a live performance. Standard on SLT and Denali models, the premium 10-speaker Bose sound system with subwoofer offers incredible sound detail and richness.

**IN-CONSOLE POWER PORT** For secure and concealed charging of your portable electronic devices, Acadia includes a 12-volt DC power outlet in the storage well of your center console. It lets you quickly recharge small portable devices such as phones, camera batteries or MP3 players.

**14 USB CONNECTIVITY** Plug into the USB port,<sup>14</sup> and you can control most of your iPod® or MP3 music player's functions, including playlists and song selection, from your available steering-wheel-mounted radio controls.

<sup>14</sup>Not compatible with all devices.

**BLUETOOTH® FOR PHONE** Extend your capabilities just by activating the Bluetooth feature on your phone or portable device. This lets your Bluetooth device work through many of the controls and features already installed in your Acadia, including hands-free operation and dialing.

<sup>14</sup>Go to [gm.com/bluetooth](http://gm.com/bluetooth) to see which Bluetooth phones are compatible with the vehicle.

**16 120-VOLT AC POWER OUTLET** Your electronics are not accessories; they are necessities in today's fast-paced world. Acadia is helping you stay in charge by offering an available 150-watt/120-volt AC household current grounded power outlet with the Rear-Seat Entertainment System to keep your phone, laptop or music player fully charged. This outlet can also be used to power portable televisions, video players or game systems and most inflators for sporting goods.

**18 REAR-SEAT ENTERTAINMENT SYSTEM** This available system offers video gaming and DVD playback for rear-seat passengers. It includes a rear-seat DVD player with remote, overhead display, two sets of wireless infrared headphones (batteries included) and more.

**REAR-VISION CAMERA SYSTEM** Make it easier to back up to a trailer or negotiate a tight space. This standard system displays a real-time video feed from the rear-mounted camera onto the Color Touch Radio screen when the vehicle is in reverse.

**DUAL PANEL SUNROOF** Where is it written that the occupants of the front seats should be the only ones to have the fun? Acadia's available two-panel dual sunroof lets those seated in the second and third rows feel special, too.

**ULTRASONIC REAR PARKING ASSIST** This standard system sends out ultrasonic waves from sensors in the rear bumper that function like radar to alert you to certain objects when backing up at slow speeds. The closer you are, the faster it beeps to alert you so that you can avoid an impact.

**19 UNIVERSAL HOME REMOTE** Open your garage without leaving your locked vehicle. This available remote can be easily programmed to operate the majority of garage-door-opening systems. Because it operates from the Acadia's electrical system, it will never need batteries.

# SAFETY

Designed to help protect you before, during and even after a collision, Acadia offers a reassuring level of safety engineering features. To aid you in avoiding a collision in the first place, Acadia uses sensor-based technologies like StabiliTrak, a stability control system. Acadia's seven air bags—including an available industry-first front center air bag—protect you during a collision. After a crash, OnStar<sup>1</sup> can respond by summoning emergency help if needed.

<sup>1</sup>Visit [onstar.com](http://onstar.com) for details and system limitations.



## 18 REAR CROSS TRAFFIC ALERT

This feature monitors your surrounding environment and, working with the Rear-Vision Camera System, sends audio and visual warnings that alert you to any cross traffic while backing up. It is standard on SLT-2 and Denali models.

## 19 FRONT CENTER AIR BAG<sup>2</sup>

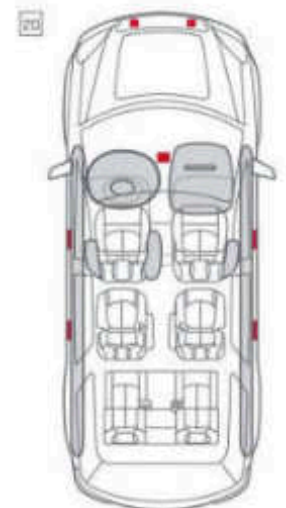
The 2013 GMC Acadia offers the industry's first available front center air bag. This air bag is designed to help protect drivers and front-seat passengers in far-side impact crashes where the affected occupant is on the opposite, non-struck side of the vehicle.

**20 SIDE-IMPACT AIR BAGS<sup>3</sup>** To help protect the thorax and pelvic regions of the driver and front passenger in a side-impact collision, Acadia models include standard side-impact air bags mounted on the driver and outside front passenger seats.

<sup>3</sup>Air bag inflation can cause severe injury or death to anyone too close to the air bag when it deploys. Be sure every occupant is properly restrained. Always use safety belts and the correct child restraint for your child's age and size, even with air bags. Even in vehicles equipped with the Passenger Sensing System, children are safer when properly secured in a rear seat in the appropriate infant, child or booster seat. Never place a rear-facing infant restraint in the front seat of any vehicle equipped with an active frontal air bag. See your Owner's Manual and child safety seat instruction for more safety information.

**21 HEAD CURTAIN SIDE-IMPACT AIR BAGS<sup>4</sup>** These air bags unfurl from the roof rail like a protective curtain for outboard passengers and can be activated by either rollover sensors or side-impact sensors.

**22 DUAL-STAGE FRONTAL AIR BAGS AND SIDE-IMPACT AIR BAGS<sup>5</sup>** To help reduce the risk of injury to driver and front passengers, the dual-stage frontal air bags in Acadia have sensors that gauge the severity of a crash, then determine whether to employ one or two levels of inflation. Acadia also features a Passenger Sensing System for the outboard front passenger that automatically turns off the air bag if the passenger is under the appropriate weight.



# ONSTAR

## STABILITRAK STABILITY CONTROL SYSTEM

To help you stay in control when the road surface is loose, snowy, icy, wet or uneven, StabiliTrak uses a network of vehicle sensors to monitor how your Acadia is responding to your steering and braking commands. If the system determines your vehicle is not responding properly, it can pulse the brakes or reduce engine power to help you stay on the path being steered. StabiliTrak is not a substitute for common sense; please drive carefully within the limits of the road conditions and your vehicle's capabilities.

## SIDE BLIND ZONE ALERT

Available radar-equipped sensors monitor Acadia's blind spots, alerting the driver via audio and visual warnings to help reduce the risk of collisions.\* This feature is standard on SLT-2 and Denali models.

\*Before making a lane change, always check the Side Blind Zone Alert display, check the side and inside-rearview mirrors, look over your shoulder for vehicles and hazards and start the turn signal.

## TIRE PRESSURE MONITORING SYSTEM

Properly inflated tires are critical to vehicle control, fuel economy and your comfort. Tire Pressure Monitoring uses tiny sensors inside the wheel to "broadcast" tire pressure to your vehicle, which alerts you to their status and inflation level through the Driver Information Center. If you subscribe to OnStar Vehicle Diagnostics, this information is part of their monthly e-mail update, or if you have the OnStar RemoteLink app,<sup>6</sup> you can check the status from your smartphone.

\*Does not monitor speed. <sup>6</sup>RemoteLink requires active OnStar subscription. Available on select iPhone®, Android™ and BlackBerry® devices. Services vary by phone, vehicle and conditions.

## LED DAYTIME RUNNING LAMPS

By running the LED lamps in daytime, you can gain recognition by other drivers from a greater distance, giving you an extra measure of security.

## LATCH CHILD SEAT ANCHORING SYSTEM

LATCH stands for Lower Anchors and Top tethers for Children. It means that a LATCH-equipped child seat will install to specially designed retainer hooks in your Acadia. It also enables a child seat top tether strap to be attached that helps limit movement in a forward crash to help reduce the chance of injury.

## PASS-KEY III+ THEFT

**DETERRENT SYSTEM** Preventing unauthorized starting attempts in your Acadia comes down to a tiny chip found in your ignition key. It functions as an electronic "fingerprint" that disables your starting system if it detects a theft attempt is under way.

## REINFORCED STEEL SAFETY

**CAGE DESIGN** Acadia's robust body-frame integral structure is engineered to help maintain the integrity of the passenger compartment in the event of a collision.

OnStar,<sup>5</sup> standard for 6 months, lets you speak to a live OnStar Advisor just by pressing the blue button on your rearview mirror. OnStar Advisors can guide you anywhere or suggest nearby points of interest. If you have the Navigation System<sup>7</sup> installed, directions can be downloaded directly to your navigation screen.

\*Visit onstar.com for coverage map, details and system limitations. OnStar acts as a link to existing emergency service providers. <sup>7</sup>Map coverage available in the United States, U.S. Virgin Islands, Puerto Rico and Canada.

## DIRECTIONS & CONNECTIONS PLAN

Success in today's fast-moving world means finding and focusing on the information that means the most to you. To put this capability at your fingertips, all Acadia models feature a 6-month trial subscription to the OnStar Directions & Connections Plan, standard.

\*Visit onstar.com for coverage map, details and system limitations.

## HANDS-FREE CALLING<sup>8</sup> WITH VOICE-ACTIVATED DIALING

Available OnStar Hands-Free Calling is built into your Acadia. Just push a button, call out the number and you're free to keep your eyes on the road. It's reliable, because it is specially designed for better connectivity and fewer dropped calls in areas with limited cellular reception.

\*Visit onstar.com for coverage map, details and system limitations. OnStar Hands-Free Calling requires existing OnStar service contract and prepaid minutes. Not available in certain markets. Calls can be made in U.S. and Canada only.

## TURN-BY-TURN NAVIGATION

Drive with more confidence and certainty. OnStar Turn-By-Turn Navigation is built into your Acadia. It's simple—all you have to do is push one button and ask the OnStar Advisor to download directions to your Acadia. Turn-By-Turn is also smart, because an automated voice calls out every turn as you need it.

## ONSTAR eNAV WITH

**MAPQUEST.COM™** Want to get a head start on a trip? Start by checking out your destination on mapquest.com. With OnStar eNav,

just click the "Send" link on the Web site, and it will be sent to your vehicle. When you're ready to head out, simply retrieve the destination and directions will be downloaded to your vehicle based on your location, with nothing to type on the screen and no maps to hold.

## DESTINATION DOWNLOAD

On vehicles equipped with the optional Navigation System, simply press your blue OnStar button, and you will be connected with a trained Advisor who will download your directions to your Acadia's navigation screen. You can also have destinations downloaded on the go—no need to pull over to enter new addresses. It's an enhancement that makes screen-based navigation systems easier and faster to use.

## STOLEN VEHICLE ASSISTANCE<sup>9</sup>

If your Acadia is ever stolen, OnStar can help locate it after verification with law enforcement. OnStar can use built-in GPS technology to help to locate it, prevent it from restarting with Remote Ignition Block or, if the vehicle is in use, engage the Stolen Vehicle Slowdown technology to help police recover it quickly and safely.

\*Services vary by model and conditions.

## ROADSIDE ASSISTANCE<sup>10</sup>

If the unexpected happens on the road—you're stranded, run out of gas or have a flat tire—one push of the OnStar button can immediately connect you to an Advisor ready to help any hour of the day or night. OnStar can

use GPS technology to pinpoint your location and connect you to a service provider. No guessing about where you are or what to do.

\*Roadside service provided by Cross Country

## REMOTE DOOR UNLOCK<sup>11</sup>

It's happened to everyone. But there is an easy solution. If you get locked out of your Acadia, OnStar can help. After verifying your account, an OnStar Advisor can send a signal to your Acadia that usually unlocks the doors within minutes.

\*Services vary by model and conditions.

## REMOTE HORN AND LIGHTS

Say you're in a large parking area, and you just can't remember where you parked. Just call the toll-free number and OnStar can send a remote signal to flash your lights and sound your horn to help you locate your Acadia.

## AUTOMATIC CRASH RESPONSE<sup>12</sup>

If your Acadia is in a crash, built-in sensors can automatically send an alert to OnStar. An OnStar Advisor is immediately connected to your vehicle to help you. Even if you aren't capable of responding, the Advisor can use GPS technology to locate you and request that emergency help is sent right away.

\*OnStar acts as a link to existing emergency service providers.

## CRISIS ASSIST

During severe weather or other natural disasters, OnStar can offer assistance and help you navigate your way to safety. Just push the red OnStar emergency button and our specially trained Crisis Assist Team moves quickly to help

you. OnStar can pinpoint your location and provide up-to-date information from public safety authorities, request that help be sent to you or even contact family members or loved ones.

## EMERGENCY SERVICES

If someone in your Acadia needs emergency help, the OnStar emergency button gives you a priority connection to a specially trained Advisor at any time, day or night. OnStar uses GPS technology to pinpoint your location and can request police, fire or medical support be sent right away. The Advisor can also stay with you on the line until help arrives.

## ONSTAR REMOTELINK<sup>6</sup> APP

The OnStar RemoteLink app offers an amazing level of control and connection with your vehicle. After downloading and registering the app, GMC owners with an eligible vehicle can use their iPhone® or Android™-based mobile devices to control their vehicle from their phone and perform specific commands—like unlocking their doors—remotely. You can lock/unlock your doors from any distance, start your vehicle remotely,<sup>13</sup> sound your horn and flash your lights to help locate your vehicle or contact an OnStar Advisor, Roadside Assistance or your preferred dealer. To learn all about all the great features available, go to onstar.com.

\*Available on iPhone®, Android™ and select BlackBerry® devices. Services vary by phone, vehicle and conditions. Requires an active OnStar subscription. <sup>13</sup>Not available on SLE-1.

# POWERTRAIN

The technologically advanced engine and transmission of a GMC are at the heart of its professional-grade capabilities. With its 288 horsepower, 270 lb-ft of torque and an EPA-estimated 24 highway mpg, Acadia's 3.6L V-6 engine is the perfect expression of what GMC engineering is all about—powerful yet efficient performance.

## 3.6L V-6 VVT [LLT]

Engineered for responsiveness at all speeds, the 3.6L V-6 VVT is the ideal blend of power and efficiency. With a high-performance direct-injected 24-valve, dual-overhead cam design, the 3.6L V-6 accelerates smoothly and quickly for confident highway passing and merging. Yet its efficiency gives it surprising highway fuel economy—an EPA-estimated 24 highway mpg.

## VARIABLE VALVE TIMING [VVT]

This gives you the power of a high-performance engine with the low-speed response you need for situations such as trailering or climbing steep inclines. This technology constantly monitors and changes when the valves open and close to give you near-peak levels of torque across the entire range of engine speeds.

## OIL LIFE MONITOR

For long life and durability, nothing is more important than changing your oil at the right time. GMC engineered the mystery out of this essential service with the Oil Life Monitor. It calculates how much life your oil has left, based on when and how you drive. Then it updates you with a telltale on your Driver Information Center.

## 6-SPEED AUTOMATIC OVERDRIVE TRANSMISSION

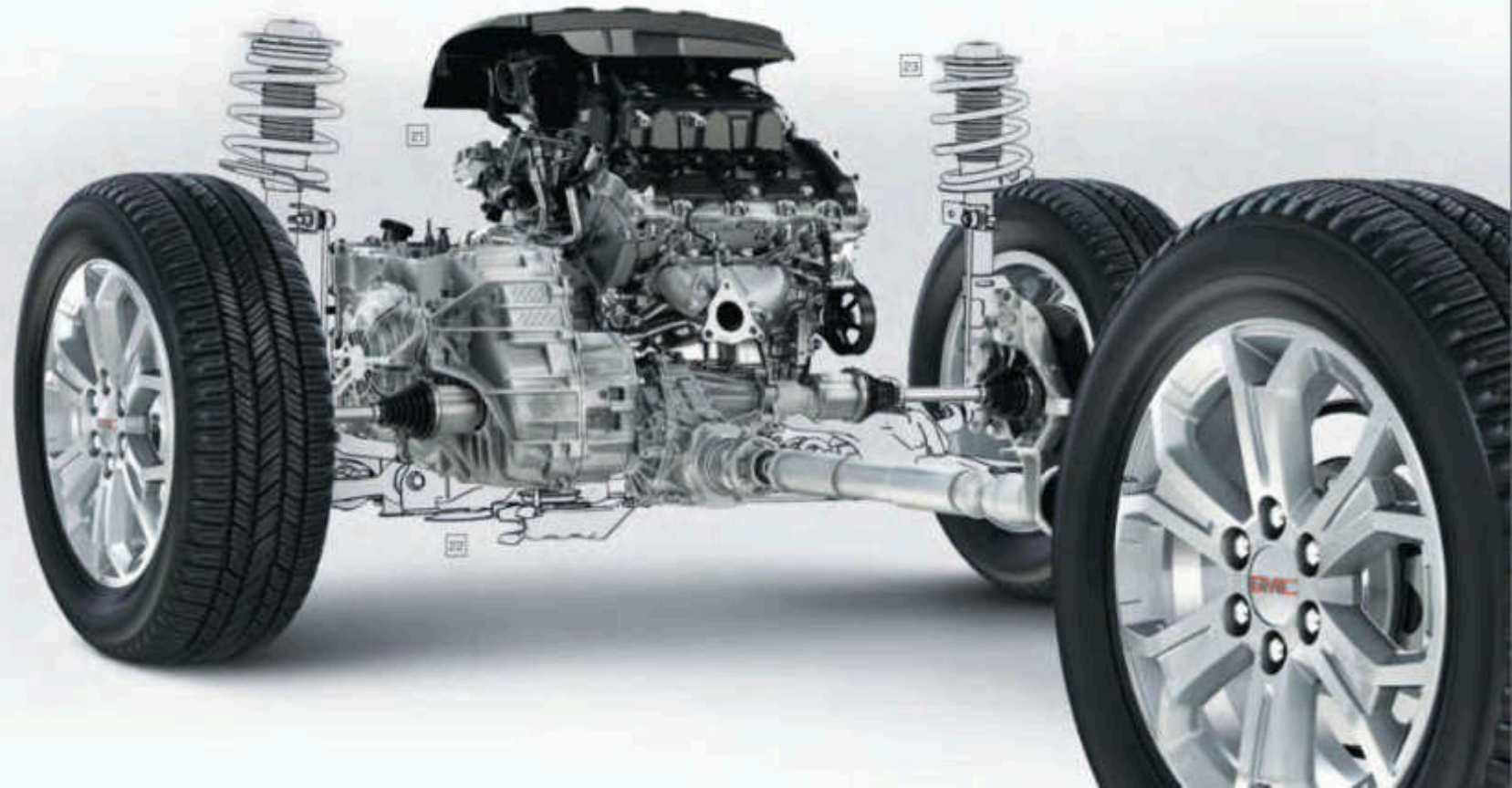
Designed to be an interactive partner with the engine and control system, this transmission chooses the best gear for fuel economy or power based on your driving style. For steep hills, bad weather or a really great driving road, all Acadia models feature tap-up/-down gear selection with Driver Shift Control. It gives you the ability to manually shift gears for optimal driver control.

## ONSTAR VEHICLE DIAGNOSTICS\*

The peace of mind that comes from knowing the condition of your Acadia's key systems is as easy as checking your e-mail. The OnStar Vehicle Diagnostics service that comes standard with your 6-month trial subscription to OnStar can run hundreds of checks of your Acadia's engine, transmission, antilock brakes and more, then organize the

information into an easy-to-read monthly report. OnStar can also run a check of your vehicle as you drive just by pressing the blue button and asking the Advisor for an On-Demand Diagnostics check. That's peace of mind when you need it.

\*Visit onstar.com for coverage map, details and system limitations. Services vary with conditions.



# CHASSIS & SUSPENSION

The foundation for the premium character of Acadia is its strong chassis and sophisticated suspension design. The smooth ride of Acadia starts with having the longest wheelbase in its class. A host of suspension engineering features then balance ride comfort with responsive handling to create a refined driving experience.

## **WIDE STANCE/LONG WHEELBASE**

Acadia has the longest wheelbase measurement in its class, which reduces fore-aft rocking at highway speeds. The wide track pushes the wheels out to the edge of the body for the stability and sure-footed cornering found in much smaller vehicles.

## **ADVANCED DUAL-FLOW VALVING**

This feature in Acadia Denali's front suspension provides a smoother ride and improved handling across a broad range of driving conditions.

## **FULLY INDEPENDENT**

**SUSPENSION** For precise control and premium refinement, GMC Acadia is engineered with a four-wheel independent suspension. As the name implies, each wheel can act independently to maintain road contact, which helps you stay in control. With sophisticated shock absorbers and struts filled with nitrogen gas and conventional fluid, the ride is smooth and controlled even on poorly maintained roads.

## **POWER RACK-AND-PINION**

**STEERING** For precise and accurate response, Acadia features power rack-and-pinion steering. It provides a positive on-center feel at highway speeds, as well as low-speed assist for maneuvering in tight spaces. On SLT and Denali models, variable assist power steering adjusts steering assist torque in relation to your speed, contributing to the accurate handling of your Acadia.

## **ALL-WHEEL DRIVE (AWD)**

For an extra measure of traction in wet or dry weather, a fully automatic AWD system is available on all Acadia models. This system transfers power between front and rear wheels based on driver input and available traction, giving you control when you need it. Because the AWD system is so well integrated with Acadia, it is almost imperceptible in daily driving.

## **TRACTION CONTROL SYSTEM**

To make the most of available traction on many road surfaces, traction control measures and compares the speed of your wheels. If it senses one or more wheels starting to spin, such as on a slippery surface, the system applies individual brakes and manages engine power to direct torque to the wheels with the most traction available, so you can move forward with a better sense of control.

## **ANTILOCK BRAKING SYSTEM**

**[ABS]** For confident stops in a variety of conditions, every Acadia features four-channel antilock brakes. When the brakes are applied, ABS can detect impending wheel lock-up, and then pulse that wheel's brake to prevent it. A four-channel system, it can activate any combination of vehicle brakes independently to maintain control.

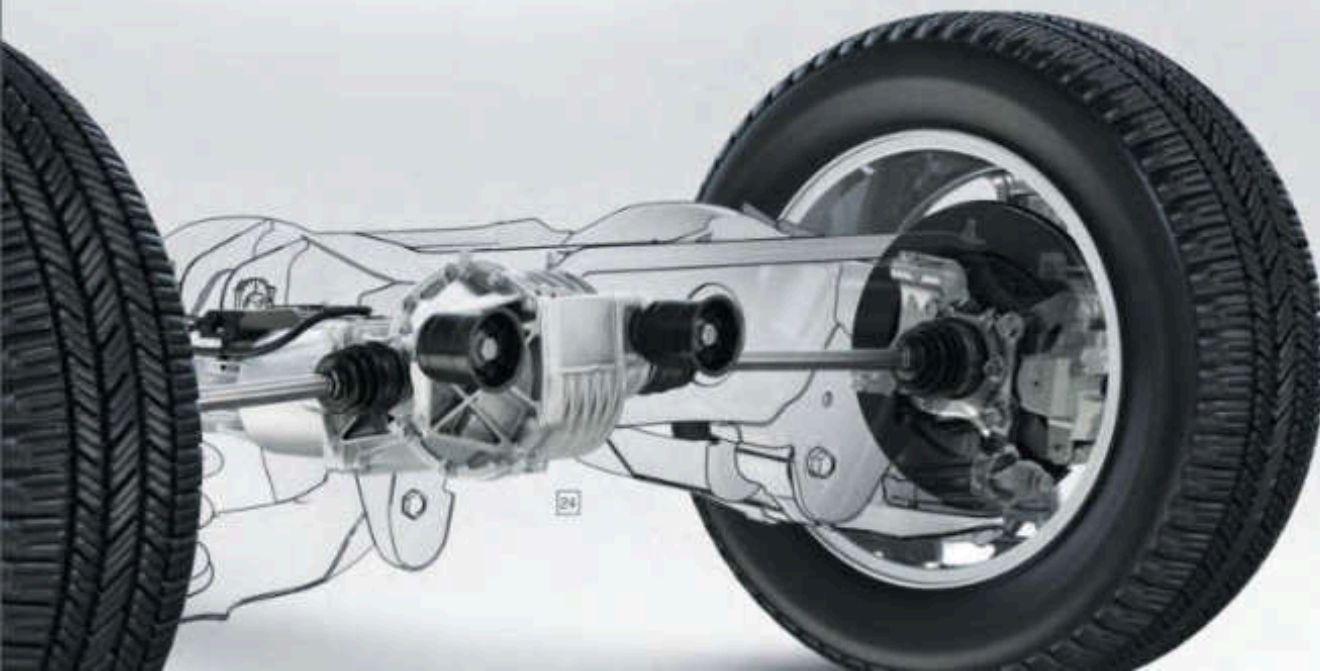
## **POWER FOUR-WHEEL DISC**

**BRAKES** For outstanding braking performance in virtually any conditions, power four-wheel disc brakes are standard on every model. The discs are ventilated to help shed heat and prevent brake fade, letting you brake with confidence.

## **TRAILERING PACKAGE**

Acadia is engineered with a maximum trailer weight rating of up to 5200 lbs.\* When you order this available package, you get the heavy-duty cooling system, a factory-installed trailer hitch with a standard 2" receiver, attaching points for safety chains and a seven-pin trailer harness with a built-in universal adapter.

\*Maximum trailer weight ratings are calculated assuming a tow vehicle, except for any option(s) necessary to achieve the rating, plus driver. The weight of other optional equipment, passengers and cargo will reduce the maximum trailer weight your vehicle can tow. See your GMC dealer for additional details.



# EXTERIOR COLORS



All colors are basecoat / clearcoat for high-gloss and durable finish. See dealer for more details. \*Not available on Denali. \*\*Extra coat color.



ACADIA SLT IN CRYSTAL RED TINTCOAT shown with available equipment.

## WHEELS



RSZ 18" ALUMINUM  
STANDARD ON SLE



RZA 19" ALUMINUM  
STANDARD ON SLT



S40 20" ULTRA-BRIGHT  
MACHINED ALUMINUM  
STANDARD ON DENALI

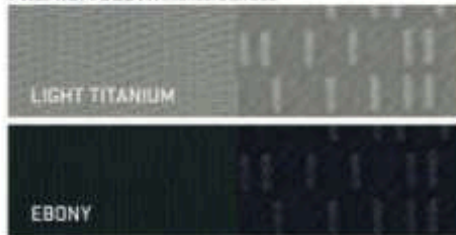


PPE 20" CHROME-CLAD ALUMINUM  
AVAILABLE ON DENALI

# INTERIOR COLORS



## PREMIUM CLOTH Standard on SLE



\*Not available with eighth passenger seating.

## LEATHER-APPOINTED Standard on SLT



## PERFORATED LEATHER-APPOINTED Available on SLT



## PERFORATED LEATHER-APPOINTED Standard on Denali



# ACCESSORIES

GMC Accessories are engineered and tested to meet the professional-grade standards of your Acadia. Available individually or as part of a complete package, they are the easiest way to customize your Acadia while still keeping it professional grade. Customizing your Acadia is easy; just ask your dealer.

**1 SIDE WINDOW WEATHER DEFLECTOR** Let fresh air in and help keep rain, sleet and snow out with these custom-molded Side Window Weather Deflectors. Available in Smoke.

**2 ROOF RACK CROSS RAIL PACKAGE** Carry up to a 200-lb<sup>1</sup> load on the roof of your Acadia with these Roof Rack Cross Rails that add both function and style.

<sup>1</sup>Cargo and load capacity limited by weight and distribution.

**3 ASSIST STEPS** These stylish Assist Steps make it easier to get in and out of your Acadia. Constructed of high-strength aluminum, these 6" chrome steps are topped with full-length black traction pads.

**PREMIUM ALL-WEATHER FLOOR MATS** Complement the interior of your Acadia with the hardworking functionality of these Premium All-Weather Floor Mats. These precision-designed mats fit the floor exactly. Their deep-ribbed pattern collects rain, mud, snow and other debris for easy cleaning. Nibs on the back help keep them in place. Available in three colors to match your interior: Ebony, Light Titanium and Dune. GMC logo on front mats only.

**CARGO ORGANIZER** This durable, flexible, collapsible organizer has multiple compartments, allowing you to carry lightweight items of various sizes in the rear of your Acadia. Can be folded flat or removed from the vehicle as needed. Black with GMC logo.

**HITCH BALL ASSEMBLY** This standard-size Hitch Ball Assembly comes complete with a chrome finish tow ball, washer and retaining nut. Designed to fit standard ball mount assemblies (sold separately).

**HITCH BALL MOUNT ASSEMBLY** This 2" receiver ball mount package contains the tubular steel welded ball mount, retainer pin and clip for easy installation and removal. Available in different height offsets to meet your towing needs. Standard hitch ball assemblies are also available.

**CARGO NET** Enhance the efficiency of your Acadia with this black Cargo Net. It attaches easily to the sides of your cargo area to keep small, light items neat and handy while in transit.

**CARGO SECURITY SHADE** Keep the cargo area of your Acadia under wraps with this Ebony fabric Cargo Security Shade. Quick and easy installation and removal. It attaches with four bungee cords and folds or rolls for easy storage.



## WHEELS

**ACCESSORY WHEELS<sup>†</sup>** Roll with the best. These custom wheels feature a brilliant, durable chrome finish and are available with matching lugs and GMC center caps.



RV019 19" CAST-CHROME 10-SPOKE WHEEL



RV005 20" CAST-CHROME 6-DOUBLE-SPOKE WHEEL (VZ1R)



RV981 20" CAST-CHROME 6-DOUBLE-SPOKE WHEEL (VZ1S)



RV082 20" CAST-CHROME 12-SPOKE WHEEL (VZ1U)

<sup>†</sup>For only EPA approved tire and wheel combinations. Unapproved combinations may change the vehicle's performance characteristics. For approved tire and wheel combinations and other important information, go to [gmaccessories.com](http://gmaccessories.com) or see your dealer for details.



## TRIM LEVELS

SLE<sup>1</sup>  
SLT-2<sup>2</sup>  
SLT-1<sup>3</sup>  
SLT-V<sup>4</sup>  
DENALI<sup>5</sup>

## ENTERTAINMENT/COMMUNICATION/NAVIGATION, continued

<b>AUDIO</b> 10-speaker Bose® premium sound system with subwoofer	-	-	•	•	•
With 5.7 Surround Sound. Requires Rear-Seat Entertainment System.	-	◻	◻	◻	◻
Audio controls located in rear cargo area. Requires Technology Package on SLT-2.	-	-	-	◻	•
<b>SIRIUSXM SATELLITE RADIO</b> <sup>6</sup> Standard on all Acadia sound systems, including 3 trial months of service	•	•	•	•	•
<b>NAVTRAFIC</b> <sup>7</sup> Included and only available with Color Touch Navigation System	-	-	◻	◻	◻
<b>BLUETOOTH</b> <sup>8</sup> For phone, personal call-phone connectivity to vehicle audio system	•	•	•	•	•
<b>ONSTAR</b> <sup>9</sup> 6 months of Directions & Connections Plan	•	•	•	•	•

## EXTERIOR STYLING AND FUNCTIONALITY

<b>DOOR HANDLES</b> Chrome. On SLE models, includes black beltline molding; on SLT-1, SLT-2 and Denali models, includes bright beltline molding.	•	•	•	•	•
<b>FASCIAS</b> Front and rear body-color, Denali-specific	-	-	-	-	•
<b>GLASS</b> Solar-Ray deep-tinted except light-tinted glass on windshield and driver and front-passenger-side glass	•	•	•	•	•
<b>GRILLE</b> Signature Denali	-	-	-	-	•
<b>LIGHTS</b> Dual halogen projector beam headlamps	•	•	•	•	-
High-intensity Discharge low-beam headlamps, with halogen projector high beam. Requires Technology Package on SLT-2.	-	-	-	◻	•
Daytime running lamps	•	•	•	•	•
Front halogen fog lamps	-	-	•	•	•
<b>MOLDINGS</b> Body-color bodyside	•	•	•	•	-
Denali-specific, body-color bodyside with chrome insert and rocker molding	-	-	-	-	•
<b>OUTSIDE MIRRORS</b> Power-adjustable, manual-folding, black	•	•	-	-	-
Heated, power-adjustable, manual-folding with integrated turn signal indicators, body-color	-	-	•	-	-
Heated, power-adjustable power-folding and driver-side auto-dimming, with integrated turn signal indicators and driver-side memory, body-color	-	-	-	•	•
Integral spoiler for blind zone	•	•	•	-	-
<b>REAR LIFTGATE</b> Manual	•	-	-	-	-
Power	-	•	•	•	•
<b>WIPERS</b> Front and rear intermittent with washers	•	•	•	•	•
<b>ROOF RAILS</b> Chrome	•	•	•	•	-
Chrome, Denali-specific	-	-	-	-	•

## SAFETY AND SECURITY

<b>AIR BAG</b> <sup>10</sup> Includes driver and right-front passenger frontal air bags with Passenger Sensing System, front-row side-impact air bags and head curtain side-impact air bags with rollover protection in all 3 rows	•	•	•	•	•
Front center air bag	-	•	•	•	•
<b>REAR CROSS TRAFFIC ALERT</b>	-	-	-	•	•
<b>SIDE BLIND ZONE ALERT</b>	-	-	-	•	•
<b>TIRE PRESSURE MONITORING SYSTEM</b> Does not monitor spare tire	•	•	•	•	•
<b>VEHICLE THEFT-DETERRENT SYSTEM</b> With PASS-Key III+ and engine immobilizer	•	•	•	•	•

## STANDARD TECHNICAL DATA

<b>3.6L V-6 VVT DI ENGINE</b>	
Bore and stroke (mm)	94.0 x 95.6
Horsepower @ rpm	288 @ 6300
Torque @ rpm (lb-ft)	270 @ 3400
Compression ratio	11.33
Valvetrain	Double-overhead cam with 4 valves per cylinder
Fuel delivery	Spark-ignited direct fuel injection
<b>TRANSMISSION</b>	6-speed automatic Hydra-Matic 6T75
<b>STANDARD FRONT-WHEEL DRIVE (FWD)</b>	
<b>AVAILABLE ALL-WHEEL DRIVE (AWD)</b>	Active Intelligent AWD
<b>BRAKES</b>	4-wheel disc with antilock braking system
<b>STEERING</b>	Hydraulic rack-and-pinion system
<b>BATTERY</b>	690 cold-cranking amps
<b>ALTERNATOR</b>	170 amps
<b>FUEL TANK CAPACITY</b>	22.0 gallons (approx.)
<b>EPA-ESTIMATED MILEAGE</b>	
FWD	17 city/24 hwy
AWD	16 city/23 hwy
<b>TRAILERING DATA</b>	
FWD/AWD	Axle ratio: 3.15, Maximum Trailer Weight <sup>11</sup> 5200 lbs
<b>GROSS VEHICLE WEIGHT RATING<sup>12</sup> (GVWR) (LBS)</b>	
FWD/AWD	6411/6459
<b>EXTERIOR DIMENSIONS (IN)</b>	
Overall Height	72.8 with roof rails
Overall Width	78.9
Overall Length	200.8
Wheelbase	118.9
<b>INTERIOR DIMENSIONS</b>	
Head Room	Front 40.3/Rear 38.6/38.4 in
Leg Room	Front 41.3/Rear (max) 36.6/33.7 in
Shoulder Room	Front 51.6/Rear 51.0/51.8 in
Hip Room	Front 58.5/Rear 57.8/48.3 in
Interior Volume	115.9 cu. ft.
<b>CARGO AREA DIMENSIONS (CU. FT.)</b>	
Second and third row folded	118.1
Second row up/third row folded	70.1
Behind third row	24.1

<sup>1</sup>If you subscribe after your trial period, subscriptions are continuous until you call SiriusXM to cancel. See SiriusXM Customer Agreement for complete terms at [siriusxm.com](http://siriusxm.com). Other fees and taxes will apply. All fees and programming subject to change. For more information about NavTraffic, visit [siriusxm.com/navtraffic](http://siriusxm.com/navtraffic). XM satellite service is available only to those in the 48 contiguous USA and DC. <sup>2</sup>Go to [gm.com/bluetooth](http://gm.com/bluetooth) to find out which Bluetooth phones are compatible with the vehicle. <sup>3</sup>Visit [onstar.com](http://onstar.com) for details and system limitations. <sup>4</sup>Always use safety belts and the correct child restraint for your child's age and size, even with air bags. Even in vehicles equipped with the Passenger Sensing System, children are safer when properly secured in a rear seat in the appropriate infant, child or booster seat. Never place a rear-facing infant restraint in the front seat of any vehicle equipped with an active frontal air bag. See your vehicle Owner's Manual and child safety seat instructions for more safety information. <sup>5</sup>Maximum trailer weight ratings are calculated assuming a base vehicle, except for any option(s) necessary to achieve the rating plus driver. The weight of other optional equipment, passengers and cargo will reduce the maximum trailer weight your vehicle can tow. See your dealer for details. <sup>6</sup>When properly equipped includes weight of vehicle, passengers, cargo and equipment. <sup>7</sup>Cargo and load capacity limited by weight and distribution.

# IMPORTANT WORDS

## COMMITMENT PLUS

From the owner orientation – and full tank of gas – you receive when you take possession of your Acadia to the **24-Hour Roadside Assistance, Courtesy Transportation and Travel Benefits**, Commitment Plus is a portfolio of owner privileges that lasts throughout your warranty. For expert product information, Roadside Assistance or other services, call 1-800-GMC-8782.

**TRAVEL BENEFITS AND ROADSIDE ASSISTANCE** Available around the clock: trip routing service, a program for reimbursement for trip interruption due to necessary warranty repairs, towing, flat tire change, jump-starts and more for 5 years or 100,000 miles (whichever comes first).

**COURTESY TRANSPORTATION** Available at participating dealers: shuttle service, reimbursement of certain public transportation or fuel expenses for overnight warranty repairs and courtesy rental for overnight work repairs. See your dealer for details.

**GMC OWNER CENTER** A complimentary, one-stop resource to enhance your GMC ownership experience. It's easy to sign up. Just go to [gm.com/gmownercenter/gmc](http://gm.com/gmownercenter/gmc).

## ONSTAR



OnStar is a core asset of your Acadia. Benefiting from more than a decade of innovative development, it is both a highly advanced technology – fully integrated within the vehicle – and a warm human service. Standard on all Acadia models are 6 months of the OnStar Directions & Connections Plan, including the convenience of available Hands-Free Calling.<sup>1</sup> It also includes Automatic Crash Response, Stolen Vehicle Assistance, link to Emergency Services, Roadside Assistance, Remote Door Unlock, OnStar Vehicle Diagnostics, Crisis Assist and Remote Horn and Lights. OnStar services require vehicle electrical system (including battery), wireless service and GPS satellite signals to be available and operating for features to function properly. OnStar acts as a link to existing emergency service providers. Visit [onstar.com](http://onstar.com) for coverage maps, details and system limitations. Services vary with conditions.

## HANDS-FREE CALLING

Available OnStar Hands-Free Calling capability is built into your Acadia. It's there when your cell phone is unavailable, its battery is low, you can't reach it easily or you left it at home or in the office. Your Hands-Free Calling system is the right choice whenever you need an easy way to make and receive calls – at the touch of the phone icon on the rearview mirror or the steering-wheel-mounted controls. Voice-activated dialing is convenient because you don't have to dial when you are at the wheel. And Hands-Free Calling is reliable because it's specially designed for better reception and fewer dropped calls in areas of limited cellular reception.

## ONSTAR TURN-BY-TURN NAVIGATION

Standard on all Acadia models are 6 months of the OnStar Directions & Connections Plan that adds innovative, easy-to-use Turn-by-Turn Navigation plus Information and Convenience Services and Driving Directions. With Turn-by-Turn Navigation, you simply tell the OnStar Advisor your intended destination, and directions will automatically be sent to your Acadia. If you drive off course, the system can reroute you to your intended destination. An automated voice then guides you turn-by-turn until you arrive at your destination. Turn-by-Turn Navigation is further enhanced with eNAV, allowing you to send MapQuest™ directions directly to your vehicle. No need to print out directions, just call them up with simple voice commands.

## SIRIUSXM SATELLITE RADIO



SiriusXM Satellite Radio<sup>1</sup> is standard on all Acadia models. It includes 3 trial months of service. SiriusXM Satellite Radio makes your drive come alive with commercial-free music channels from virtually every genre, artist-dedicated channels, live performances and more. Tune in to live play-by-play from the biggest sports, exclusive entertainment from top personalities, compelling talk, hilarious comedy, world-class news, local traffic and weather and family-friendly programming. Welcome to the world of satellite radio. Visit [siriusxm.com](http://siriusxm.com) for details.

## GMC CERTIFIED SERVICE



To help your Acadia live up to its performance promise, GMC Certified Service – found exclusively at your GMC dealer – is there. With all the engineering excellence in Acadia, GM-trained technicians have the expertise to care for all of it.

## ADDITIONAL NOTES

**A NOTE ON CHILD SAFETY** Always use safety belts and the correct child restraint for your child's age and size, even with air bags. Even in vehicles equipped with the Passenger Sensing System, children are safer when properly secured in a rear seat in the appropriate infant, child or booster seat. Never place a rear-facing infant restraint in the front seat of any vehicle equipped with an active frontal air bag. See your vehicle Owner's Manual and child safety seat instructions for more safety information.

**TRAILERING AND OFF-ROAD INFORMATION** Please carefully review the Owner's Manual for important safety information about trailering or off-road driving in your vehicle.

**IMPORTANT WORDS ABOUT THIS CATALOG** We have tried to make this catalog comprehensive and factual. We reserve the right, however, to make changes at any time, without notice, in prices, colors, materials, equipment, specifications, models and availability. Specifications, dimensions, measurements, ratings and other numbers in this catalog and other printed materials provided at the dealership or affixed to vehicles are approximates based upon design and engineering drawings and prototypes and laboratory tests. Your vehicle may differ due to variations in manufacture and equipment. Since some information may have been updated since the time of printing, please check with your GMC dealer for complete details. GMC reserves the right to lengthen or shorten the model year for any product for any reason, or to start and end model years at different times.

**FLEET ORDERS** Some standard content may be deleted with fleet orders. See dealer for details.

**ENGINES** GMC products are equipped with engines produced by GM Powertrain or other suppliers to GM worldwide. The engines in GMC products may also be used in other GM makes and models.

**GMC.COM** See more of Acadia on our Web site: [gm.com/Acadia](http://gm.com/Acadia). More photos and information; hot links to related subjects; convenient dealer locator; pricing guide; spec out your own vehicle. Or call 1-800-GMC-8782.

**AN IMPORTANT NOTE ABOUT ALTERATIONS AND WARRANTIES** Installations or alterations to the original equipment vehicle (or chassis) as distributed by General Motors are not covered by the General Motors New-Vehicle Limited Warranty. The special body company, assembler, equipment installer or upfitter is solely responsible for warranties on the body or equipment and any alterations (or any effect of the alterations) to any of the parts, components, systems or assemblies installed by GM. General Motors is not responsible for the safety or quality of design features, materials or workmanship of any alterations by such suppliers.

**NEW-VEHICLE LIMITED WARRANTY** All GMC light-duty vehicles come with a fully transferable, no-deductible 5-year/100,000-mile (whichever comes first) Powertrain Limited Warranty. GM vehicles registered in the U.S.A. are also covered for 3 years or 50,000 miles (whichever comes first). Coverage includes tires and towing to your nearest GMC dealership. Repairs will be made to correct any vehicle defect and most warranty repairs will be made at no charge. In addition, rust-through corrosion will be covered for 6 years or 100,000 miles (whichever comes first). See dealer for details.

**ASSEMBLY** GMC vehicles and their components are assembled or produced by different operating units of General Motors, its subsidiaries or suppliers to GM worldwide. We sometimes find it necessary to produce GMC vehicles with different or differently sourced components than originally scheduled. Since some options may be unavailable when your vehicle is assembled, we suggest that you verify that your vehicle includes the equipment you ordered or, if there are changes, that they are acceptable to you.

**GMMOBILITY.COM** (1-800-323-0935) GM Mobility offers financial assistance for eligible adaptive equipment to make automotive travel easier for persons with disabilities or special transportation needs. To learn more about special GM Mobility offers, visit [gmmobility.com](http://gmmobility.com).

**GMCARDMEMBERSERVICES.COM** Did you know about the family of reward credit cards that can help you get a great deal on a new GM car, light-duty truck, SUV or crossover? With a GM reward card, you accrue earnings on every credit card purchase to use toward the purchase or lease of an eligible new GM vehicle. With three cards to choose from, you're sure to find one that suits you.

<sup>1</sup>Visit [onstar.com](http://onstar.com) for coverage map, details and system limitations. OnStar Hands-Free Calling requires existing OnStar service contract (upset minutes, not available in certain markets. Data can be made in U.S. and Canada only. <sup>2</sup>If you subscribe after your trial period, subscriptions are continuous until you call SiriusXM to cancel. See SiriusXM Customer Agreement for complete terms at [siriusxm.com](http://siriusxm.com). Other fees and taxes will apply. All fees and programming subject to change. For more information about NavTraffic, visit [siriusxm.com/navtraffic](http://siriusxm.com/navtraffic). XM satellite service is available only in those in the 48 contiguous USA and DC.

©2012 General Motors. All rights reserved. GM, the GM logo, GMC, the slogans, emblems, vehicle model names, vehicle body designs and other marks appearing in this catalog are the trademarks and/or service marks of General Motors, its subsidiaries, affiliates or licensors. Bose is a registered trademark of the Bose Corporation. iPod and iPhone are registered trademarks of Apple, Inc. Facebook is a registered trademark of Facebook, Inc. Twitter is a registered trademark of Twitter, Inc. YouTube is a registered trademark of Google, Inc. Sirius, XM and all related marks and logos are trademarks of SiriusXM Radio, Inc.



VISIT US AT GMC.COM



FACEBOOK.COM/GMC



TWITTER.COM/THISISGMC



YOUTUBE.COM/GMC

13GMCADRC-25