

GMC

ACADIA

2015

WE ARE PROFESSIONAL GRADE





ACADIA SLT IN CRIMSON RED TINTCOAT
shown with available equipment.

2015 GMC ACADIA. We've given a lot of thought to creating a crossover without compromises. Acadia is the crossover engineered to help you handle your life's always-changing demands. With models designed to accommodate up to eight, it easily adapts to offer more max cargo capacity than any competitor in its class. It also offers advanced technology to keep you alert, connected, entertained and, with an available industry-first Front Center Air Bag,¹ safer. These are but a few of the ways incredible thinking elevates your driving life.

¹Always use safety belts and the correct child restraint for your child's age and size, even with air bags. Even in vehicles equipped with the Passenger Sensing System, children are safer when properly secured in a rear seat in the appropriate infant, child or booster seat. Never place a rear-facing infant restraint in the front seat of any vehicle equipped with an active frontal air bag. See your Owner's Manual and child safety seat instructions for more safety information.



ACADIA DENALI IN CARBON BLACK METALLIC
Shown with available equipment.

EXTERIOR | 2

INTERIOR | 8

PERFORMANCE | 20

SECURITY | 22

SELECTION | 26

ACADIA DENALI: THE HEIGHT OF STYLE.

Acadia Denali combines premium materials, signature styling and advanced technologies to make it the premier choice among crossovers. Its distinctive design is the result of smooth, flowing lines running uninterrupted from front to rear. It all culminates in chrome appointments and the features below, leaving little doubt that it's every inch a Denali.

HIGH-INTENSITY DISCHARGE (HID)
PROJECTOR-BEAM HEADLAMPS AND
LED DAYTIME RUNNING LAMPS.

ICONIC DENALI GRILLE.

MACHINED ALUMINUM 20" WHEELS
OR AVAILABLE CHROME-CLAD
ALUMINUM 20" WHEELS.

DUAL FLOW-THROUGH CHROME
EXHAUST OUTLETS.



ACADIA DENALI IN CARBON BLACK METALLIC
shown with available equipment.







ACADIA SLT: OUR SCULPTORS WORK IN SHEET METAL.

GMC designers crafted the high-roof, five-door design of Acadia SLT with a clear understanding of what you demand in a premium crossover without sacrificing one ounce of artful style. The low height of the rear bumper makes loading easier, while the low step-in door height allows people to enter with ease. You'll quickly find SLT offers many details that combine art and function, like the ones below.

POWER LIFTGATE.

PROJECTOR-BEAM FOG LAMPS.

HEATED POWER-RETRACTABLE
MIRRORS (AVAILABLE).

19" ALUMINUM WHEELS.

A REFLECTION OF PREMIUM.

Acadia's sculpted surfaces are where form elegantly meets function, highlighted by chrome accents for good measure.

Its design brings aerodynamics into play to help you achieve more in your daily travels without all the resistance.



DENALI GRILLE The distinctive pattern of its 3-D chrome grille is a signature detail unique to the top-of-the-line Denali series.



WRAPAROUND REAR GLASS The seamless wraparound rear glass design provides a clean, streamlined look.

POWER LIFTGATE This available feature opens with a touch of your key fob for easy access to the cargo area. Close it the same way, or use the button on the liftgate or the center console.



HEATED POWER-RETRACTABLE MIRRORS Helping remove snow, frost and fogging, these available power mirrors offer excellent visibility and extra clearance. Shown with optional Side Blind Zone Alert.



PROJECTOR-BEAM HEADLAMPS Available High-Intensity Discharge (HID) headlamps, LED daytime running lamps and LED taillamps increase visibility, giving Acadia a necklace of illumination.

PROVIDES A WARM WELCOME, AND A COOL ONE, TOO.

Acadia Denali is designed with an inviting level of comfort, thanks to refinements like heated and cooled front seats, quiet surroundings and the craftsmanship expected from the height of GMC engineering. It combines premium materials and refinements like perforated leather-appointed first- and second-row seats with the precise detailing of contrasting French seam stitching. Denali greets you with even more comforting amenities.

NEW HEATED STEERING WHEEL.

HEAD-UP DISPLAY.

BOSE® 10-SPEAKER SOUND SYSTEM.

DENALI ACOUSTIC PACKAGE.



ACADIA DENALI INTERIOR IN COCOA DUNE
shown with available equipment.







YOU SPEND A LOT OF TIME ON THE ROAD. MAKE IT SPECIAL.

Every seat in Acadia SLT provides a premium ride. Up front, you'll find leather-appointed seats in the first two rows as well as surrounding amenities that let you know you're in for something unexpected. SLT also offers a second-row bench seat to accommodate up to eight adults, or choose your second row with a pair of captain's chairs for seven-passenger seating. You'll also find a host of additional comfort and convenience features.

DRIVER INFORMATION CENTER.

STEERING-WHEEL-MOUNTED CONTROLS.

REAR VISION CAMERA SYSTEM.

TRI-ZONE CLIMATE CONTROL.

EASY ON THE EYES.

We understand that you're most comfortable when you're informed and in full command. This is apparent from how available driver alert technologies, the available navigation system,¹ entertainment and climate controls are positioned in clear view and close at hand. That's why when you're in the driver's seat in Acadia, you're clearly in the driver's seat. Yet, of course, Acadia offers several more ways to help you stay in control.

**VOICE-ACTIVATED INTELLILINK
[AVAILABLE].²**

BLUETOOTH[®] CONNECTIVITY.³

**TILT AND TELESCOPING STEERING
WHEEL.⁴**

HEAD-UP DISPLAY [AVAILABLE].⁵

¹Map coverage available in the United States, U.S. Virgin Islands, Puerto Rico and Canada. ²Full functionality requires compatible Bluetooth and smartphone. Some devices require USB connectivity. ³Go to gmdataconnect.com to find out which phones are compatible with the vehicle.







TECHNOLOGY WHERE IT BELONGS. AT YOUR FINGERTIPS.

Since technology is supposed to improve your life, Acadia makes sure it does just that by placing smart, intuitive, easy-to-use features all within reach.

COLOR TOUCH AUDIO SYSTEM This standard system uses an intuitive 6.5" diagonal high-definition touch-screen, making it easy to find important information. It includes AM/FM/CD radio/SiriusXM[®] capabilities (standard 3-month trial period) and gives you a customizable home page and USB² and auxiliary inputs for your MP3 player.

INTELLILINK³ Standard on most Color Touch Audio systems and included with available Color Touch Navigation,⁴ IntelliLink provides smartphone integration and voice-activated control of your communication and entertainment selections, including placing a call, changing stations, streaming Internet radio stations Pandora[®] and Stitcher[™] SmartRadio or accessing your music library. It also converts text messages into voice messages.

¹Standard for 3 months. If you subscribe after your trial period, subscriptions are continuous until you call SiriusXM to cancel. See SiriusXM Customer Agreement for complete terms at siriusxm.com. Other fees and taxes will apply. All fees and programming subject to change. For more information about NavTraffic, visit siriusxm.com/navtraffic. XM Satellite service is available only to those in the 48 contiguous USA and DC. ²Not compatible with all devices. ³Full functionality requires compatible Bluetooth and smartphone. Some devices require USB connectivity. Data plan rates apply. ⁴Map coverage available in the United States, U.S. Virgin Islands, Puerto Rico and Canada. ⁵Go to gmataconnect.com to find out which phones are compatible with the vehicle.



COLOR TOUCH NAVIGATION¹ WITH INTELLILINK¹

The available NAV system, which includes IntelliLink, adds multiple map views. It also features 3 months of NavTraffic,² so you'll get continuously updated traffic information incorporated into the navigation system.

USB CONNECTIVITY Plug into the USB port² and control most of your MP3 player's functions, including playlists and song selection, with available steering-wheel-mounted radio controls.

SIRIUSXM SATELLITE RADIO¹ Enjoy SiriusXM Satellite Radio with a 3-month trial subscription to the XM Premier Package.

MP3 PLAYBACK Bring the music and entertainment you love to your Acadia from most MP3 devices, including many smartphones.

HEAD-UP DISPLAY This available system projects important driving information at eye level on your windshield, such as speedometer and rpm readings, outside air temperature and more.

DENALI ACOUSTIC PACKAGE Denser sound-absorbing materials add to Acadia's already quiet environment.

BLUETOOTH³ FOR PHONE Keep your eyes on the road by activating Bluetooth on your phone or portable device.

120-VOLT AC POWER OUTLET An available 150-watt/120-volt AC household-current grounded power outlet is included with the Rear-Seat Entertainment System.

IN-CONSOLE POWER PORT A 12-volt DC power outlet is located in the center console.

REAR VISION CAMERA SYSTEM It displays a real-time image in the Color Touch Screen when Acadia is in reverse, making it easier to back up to a trailer or negotiate a tight space. Shown with available Rear Cross Traffic Alert. **WATCH IT AT GMC.COM/VISION2015.**

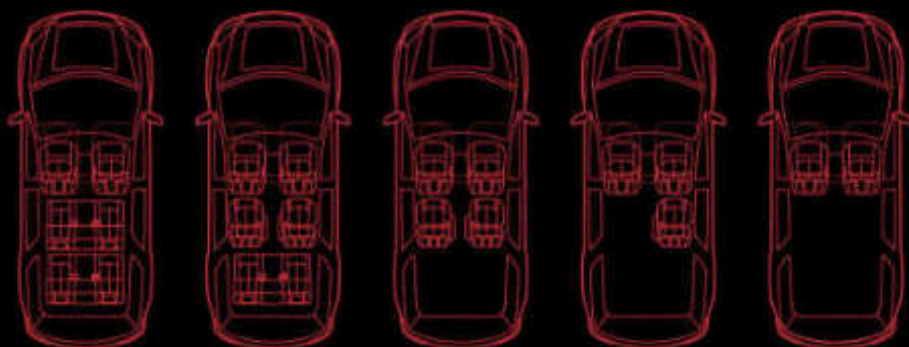
REAR-SEAT ENTERTAINMENT SYSTEM This available system offers gaming and DVD playback for rear-seat passengers. It includes a remote and two sets of wireless infrared headphones (batteries included).



10-SPEAKER BOSE AUDIO SYSTEM The available premium 10-speaker Bose system delivers the realism and presence of a live performance. Add available 5.1 Surround Sound when you choose the Rear-Seat Entertainment System.

PEOPLE? CARGO? BOTH? YES. YES. AND YES.

Acadia is designed to quickly and easily offer multiple seating and cargo configurations. Choose eight-passenger seating and get a sliding second-row bench seat that fits three adults comfortably. Select the available seven-passenger configuration, and the second row has two captain's chairs. To make third-row entry and exit easier, Acadia features Smart Slide second-row seats that move forward with just one hand.



FOLD-FLAT FUNCTIONALITY FOR THE IMPRESSIVE CAPACITY OF A FULL-SIZE SUV, THE SECOND- AND THIRD-ROW SEATS FOLD FORWARD TO CREATE A FLAT LOAD FLOOR. THIS FLEXIBILITY GIVES YOU UP TO 116.1 CU. FT.¹ OF CARGO CAPACITY.

¹Cargo and load capacity limited by weight and distribution.





IT'S ALL ABOUT CONTROLLING YOUR ENVIRONMENT.

Acadia surrounds you with a quiet environment, premium materials and convenience to elevate your traveling experience.

The results of incredible thinking are also found in how the surroundings are in your control.



CENTER CONSOLE The convenient and spacious center console gives you multiple storage compartments. The padded armrest is movable to keep you comfortable in any seating position.

DRIVER INFORMATION CENTER It includes the odometer and A/B trip odometers, as well as a message center to keep you informed about vital vehicle functions and driving conditions.

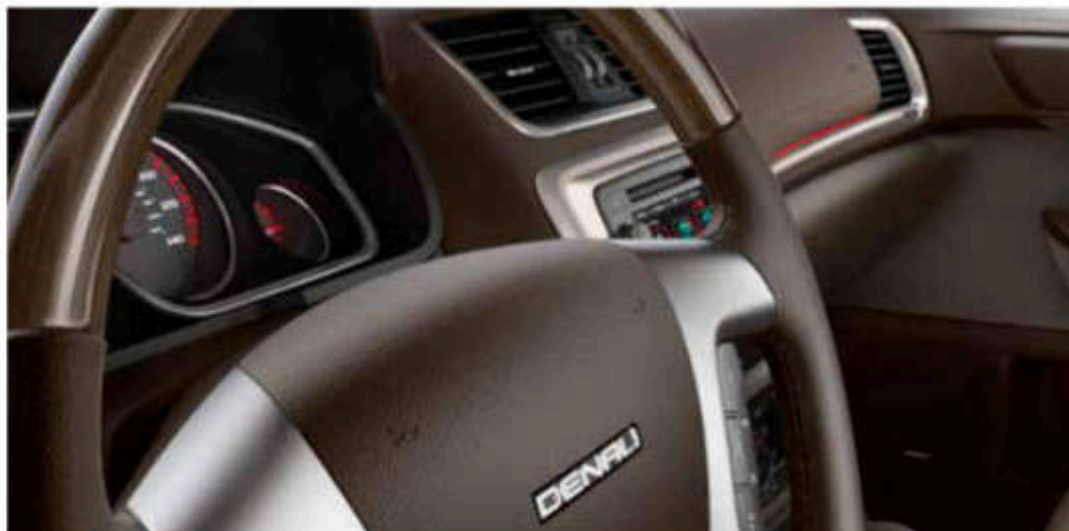


CUPHOLDERS There are two console-mounted cupholders and two in the front doors for driver and passenger. Additional holders are in the second row, with one in each door, plus two more molded into the third-row side panels.

NOISE SUPPRESSION To reduce road and wind noise, Acadia uses sound-blocking and -deadening materials to fill even the most minute gaps and sound paths.

SILL PLATE Step through the driver's or front passenger's door of Acadia Denali and its illuminated, satin-chrome sill plates let you know you've entered luxury.

DENALI ACOUSTIC PACKAGE Additional sound-absorbing materials add to the already quiet environment.



TILT AND TELESCOPING STEERING WHEEL

On Denali models, the power tilt and telescoping steering wheel moves up/down and in/out, making it easy to set the precise driving position.

HEATED STEERING-WHEEL This new heated wheel adds warmth to both the leather-wrapped and deluxe wood versions (standard on SLT-2 and Denali).

REMOTE KEYLESS ENTRY At a range of up to 195 feet, one touch will lock or unlock your Acadia or flash its lights and sound the horn to help you find it in a parking lot.



TRI-ZONE CLIMATE CONTROL The available tri-zone climate control allows the driver and front-seat passenger to set separate temperatures.

STEERING-WHEEL-MOUNTED CONTROLS Access the audio system and your phone with your fingertips. Depending on the model, it controls most music search features of compatible MP3 players, as well as phone calls.

REMOTE VEHICLE START Warm up—or cool off—your Acadia for up to 10 minutes without leaving the house. It's available to start Acadia up to 195 feet away. With tri-zone climate control, the system automatically heats or cools the cabin.

REAR CONTROLS Second-row passengers get their own controls included with the available tri-zone climate control system, so they're able to set the temperature and fan speed to their liking.

REMOTE POWER LIFTGATE This available liftgate opens with a touch of your key fob for easier access to the cargo area. Close it the same way, or use the button on the liftgate or the center console.

DUAL-PANEL SUNROOF The available dual-panel sunroof lets people seated in the second and third rows enjoy the outdoors, too.



HANDLES SITUATIONS LIKE A PRO.

Acadia's powertrain and handling more than live up to their Professional Grade status. Its 3.6L V-6 engine is the ideal expression of what GMC engineering is all about—powerful yet efficient performance. The foundation of Acadia's premium character is a strong chassis and sophisticated suspension.

ENGINE

3.6L V-6 VVT Engineered for responsiveness at all speeds, the 3.6L is the ideal blend of power and efficiency. With a direct-injected 24-valve, dual-overhead-cam design, it accelerates smoothly and quickly for confident highway passing and merging.

VARIABLE VALVE TIMING This provides the power of a high-performance engine with the low-speed response you need for situations such as trailering or climbing steep inclines.

OIL LIFE MONITOR For long life and durability, few things are more important than changing your oil at the right time. The Oil Life Monitor updates you with a message in the Driver Information Center.

*Visit onstar.com for coverage map, details and system limitations. Services vary with conditions. †Maximum trailer weight ratings are calculated assuming a base vehicle, except for any option(s) necessary to achieve the rating, plus driver. The weight of other optional equipment, passengers and cargo will reduce the maximum trailer weight your vehicle can tow. See your GMC dealer for additional details.



ONSTAR VEHICLE DIAGNOSTICS¹ The Vehicle Diagnostics service that comes with your 6-month trial subscription to OnStar runs hundreds of checks of the engine, transmission, antilock brakes and more, organizing it into a monthly e-mail.

TRANSMISSION

6-SPEED AUTOMATIC OVERDRIVE TRANSMISSION

Designed to work seamlessly with the 3.6L, the transmission chooses the best gear for efficiency or power based on your driving style. It features Driver Shift Control, allowing you to manually shift gears for optimal control.

HANDLING

WIDE STANCE/LONG WHEELBASE Acadia's long wheelbase produces a smooth ride at highway speeds, along with stability and sure-footed cornering.

FULLY INDEPENDENT SUSPENSION Engineered for precise control and premium refinement, even on poorly maintained roads, is a four-wheel independent suspension.

POWER RACK-AND-PINION STEERING Power steering provides accurate response and a positive on-center feel at highway speeds, as well as low-speed assist for maneuvering in tight spaces.

ADVANCED DUAL-FLOW VALVING This feature in Acadia Denali's front suspension delivers a smoother ride and improved handling across a broad range of driving conditions.

ALL-WHEEL DRIVE (AWD) Get an extra measure of traction and control in wet or dry weather with an available fully automatic AWD system.

ANTILOCK BRAKING SYSTEM (ABS) Confident stopping in a variety of conditions comes from four-channel antilock brakes.

TRACTION CONTROL SYSTEM To make the most of available traction on many road surfaces, the system sends power to the wheels with the most grip, so you can move forward with better control.

POWER FOUR-WHEEL DISC BRAKES For outstanding braking performance in most conditions, power four-wheel disc brakes are standard on every model.

TRAILERING PACKAGE Acadia achieves a maximum trailer weight rating of up to 5200 lbs.² This available package includes a heavy-duty cooling system, a factory-installed trailer hitch with a standard 2" receiver, attaching points for safety chains and a seven-pin trailer harness with a built-in universal adapter.



YOUR WELL-BEING IS FIRST AND FOREMOST.

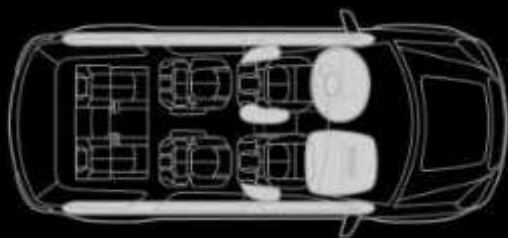
The industry-first and GM-exclusive available Front Center Air Bag¹ is designed to help protect you in a collision. Acadia also offers the available Forward Collision Alert and Lane Departure Warning. For 2014, Acadia received a 5-Star Overall Vehicle Score² for safety. Safety features are no substitute for the driver's responsibility to operate the vehicle in a safe manner. The driver should remain attentive to traffic, surroundings and road conditions at all times. Read the vehicle Owner's Manual for more important safety information.

¹Air bag inflation can cause severe injury or death to anyone too close to the air bag when it deploys. Be sure every occupant is properly restrained. Always use safety belts and the correct child restraint for your child's age and size, even with air bags. Even in vehicles equipped with the Passenger Sensing System, children are safer when properly secured in a rear seat in the appropriate infant, child or booster seat. Never place a rear-facing infant restraint in the front seat of any vehicle equipped with an active frontal air bag. See your Owner's Manual and child safety seat instructions for more safety information. ²Government 5-Star Safety ratings are part of the National Highway Traffic Safety Administration's (NHTSA) New Car Assessment Program (www.SaferCar.gov).

REAR CROSS TRAFFIC ALERT Monitoring your surroundings and working with the Rear Vision Camera System, it's available to send audio and visual warnings, alerting you to cross traffic while backing up (standard on SLT-2 and Denali models).

DRIVER ALERT SYSTEMS Forward Collision Alert produces audible and visual signals if you are rapidly approaching another vehicle and a collision may be imminent. Lane Departure Warning alerts you if you wander from your lane without using the turn signal. They're standard on Denali and available on SLT-1 and SLT-2.

SIDE BLIND ZONE ALERT Available radar-equipped sensors monitor blind spots, alerting the driver via audio and visual warnings to help reduce the risk of collisions (standard on SLT-2 and Denali models).



FRONT CENTER AIR BAG¹ The available Front Center Air Bag is designed to help protect drivers and front-seat passengers in far-side crashes where the affected occupant is on the opposite, non-struck side of the vehicle. **SEE IT IN ACTION AT GMC.COM/REASSURING2016.**

SIDE-IMPACT AIR BAGS¹ They are mounted on the driver and front-passenger seats to help protect the thorax and pelvic regions of the driver and front passenger in a side-impact collision.

HEAD CURTAIN SIDE-IMPACT AIR BAGS¹ They unfurl from the roof rail like a protective curtain for outboard passengers and can be activated by either rollover or side-impact sensors.

FRONTAL AND SIDE-IMPACT AIR BAGS¹ To help reduce the risk of injury to driver and front passengers, the dual-stage frontal air bags gauge crash severity, then employ one or two levels of inflation.

LATCH CHILD SEAT ANCHORING SYSTEM Lower Anchors and Top tethers for CHildren [or LATCH] enables a child seat top tether strap to be attached to limit movement in a forward crash, helping reduce the chance of injury.

PASS-KEY III THEFT DETERRENT SYSTEM A tiny chip found in your ignition key prevents unauthorized starting attempts.

REINFORCED STEEL SAFETY CAGE DESIGN A robust body-frame-integral structure is engineered to help maintain the integrity of the passenger compartment in the event of a collision.

STABILITRAK STABILITY CONTROL SYSTEM To help you stay in control when road surfaces are loose, snowy, icy, wet or uneven, StabiliTrak monitors how Acadia is responding to your steering and braking commands.

LED DAYTIME RUNNING LAMPS By operating the LED lamps in the daytime, you gain recognition by other drivers from a greater distance, providing an extra measure of security.



GMC PRO GRADE PROTECTION. PROFESSIONAL GRADE COVERAGE.

Pro Grade Protection is standard on every 2015 Acadia. From scheduled maintenance to protecting your entire vehicle, you can drive with confidence.

2-YEAR/24,000-MILE RECOMMENDED SCHEDULED MAINTENANCE¹

3-YEAR/36,000-MILE BUMPER-TO-BUMPER LIMITED WARRANTY²

5-YEAR/100,000-MILE POWERTRAIN LIMITED WARRANTY²

THERE WHEN YOU NEED US.



Standard for 6 months on most models, the OnStar Directions & Connections Plan³ lets you speak to a live OnStar Advisor just by pressing the blue OnStar button in your vehicle.

AUTOMATIC CRASH RESPONSE⁴ In many crashes, built-in sensors can automatically alert an OnStar Advisor who is immediately connected into your vehicle to see if you need help—even if you can't respond.

CRISIS ASSIST During severe weather or other crisis situations, OnStar can provide a quick, central point of contact when you need emergency assistance, navigation help or information.

EMERGENCY SERVICES One push of the red emergency button gives you a priority connection to an Advisor who can direct emergency service providers to your exact location—it's all a part of your OnStar subscription.

ROADSIDE ASSISTANCE⁵ If you need an emergency tow, lockout service or help with a flat tire, just push the blue OnStar button and an Advisor can direct help to your exact location—it's all a part of your OnStar subscription.

SECURITY FEATURES⁶ Remote Door Unlock, Remote Horn and Lights and Stolen Vehicle Assistance provide help when you need it.

HANDS-FREE CALLING⁷ WITH VOICE COMMAND Available OnStar Hands-Free Calling is a built-in service in case your cell phone is unavailable, out of range or has a low battery. Just push a button and say the number to make a call.

TURN-BY-TURN NAVIGATION Push your blue OnStar button and tell the Advisor where you want to go, and directions will be downloaded to your Acadia.

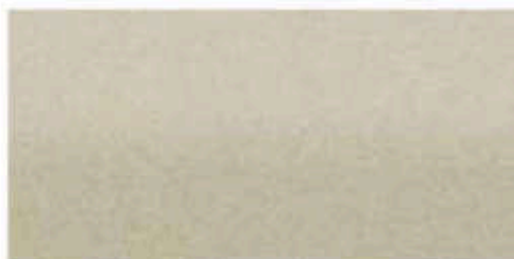
ONSTAR eNAV WITH MAPQUEST.COM¹⁰ Get a head start on a trip by checking out your destination on mapquest.com and then clicking the "Send" link. Directions will be sent to your Acadia.

DESTINATION DOWNLOAD With the optional Navigation System, an Advisor can download directions to your Acadia's navigation screen.

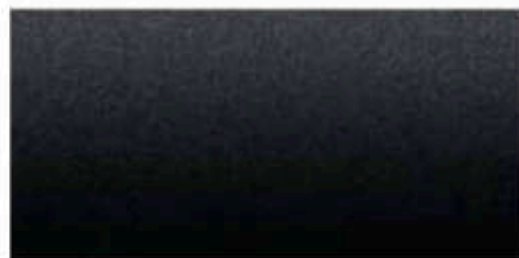
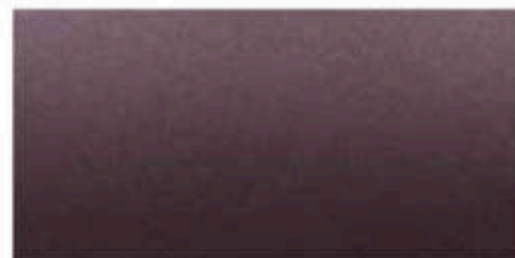
BASIC PLAN Stay connected to everyone and everything that matters with the OnStar Basic Plan on 2015 vehicles, including RemoteLink[®] Key Fob Services² to remotely start (if factory equipped) and lock/unlock your car and activate your horn and lights from anywhere. Plus get OnStar Vehicle Diagnostics and Dealer Maintenance Notification to make service scheduling simple. For Emergency and Advisor-based services, check out our additional plans.³

¹Covers only scheduled oil changes with filter, tire rotations and 27-point inspections, according to your new vehicle's recommended maintenance schedule, for up to 2 years or 24,000 miles, whichever comes first. Does not include air filters. Maximum of four service events. See participating dealer for other restrictions and complete details. ²Whichever comes first. See dealer for limited warranty details. ³Visit onstar.com for coverage map, details and system limitations. OnStar acts as a link to existing emergency service providers. Services vary by model and conditions. ⁴Visit onstar.com for vehicle availability, details and system limitations. OnStar acts as a link to existing emergency service providers. Not all vehicles may present all crash data. ⁵Roadside service provided by Advance Towaway Services. ⁶Services vary by model and conditions. ⁷OnStar Hands-Free Calling requires existing OnStar service contract and product included. Not available in certain markets. Calls can be made in U.S. and Canada only. Visit onstar.com for coverage map, details and system limitations. ⁸Access is available for 5 years from the date of vehicle delivery and is transferable. Does not include any emergency services or other OnStar services. ⁹Optional RemoteLink Key Fob Services or if your vehicle is sold, it is important to contact an OnStar Advisor. See onstar.com/mobile for full details. ¹⁰Visit onstar.com for vehicle availability, details and system limitations. Services and connectivity may vary by model and conditions.

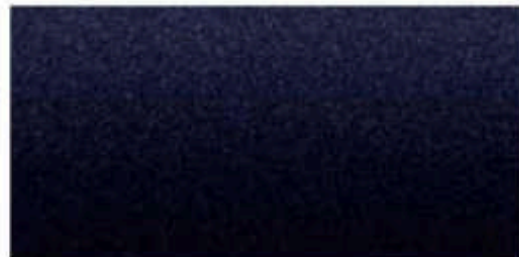
EXTERIOR COLORS

Midnight Amethyst Metallic¹Champagne Silver Metallic¹

Quicksilver Metallic

Carbon Black Metallic¹Crimson Red Tintcoat¹

Iridium Metallic

Dark Sapphire Blue Metallic¹White Diamond Tricoat¹Summit White²

All colors are selected/clearcoat for high-gloss and durable finish. See dealer for more details. ¹Extra-cost color. ²Not available on Denali.

WHEELS

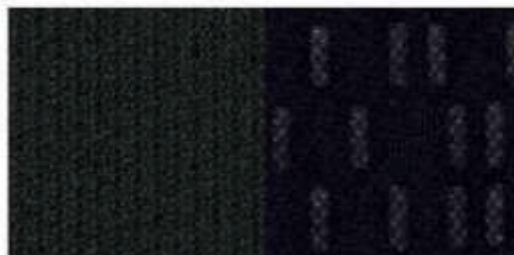
RSZ 18" ALUMINUM
STANDARD ON SLERZA 18" ALUMINUM
STANDARD ON SLT¹PEP 20" MACHINED ALUMINUM
STANDARD ON DENALIPPS 20" CHROME CLAD ALUMINUM
AVAILABLE ON DENALI¹

INTERIOR COLORS AND SEATING SURFACES

PREMIUM CLOTH Standard on SLE

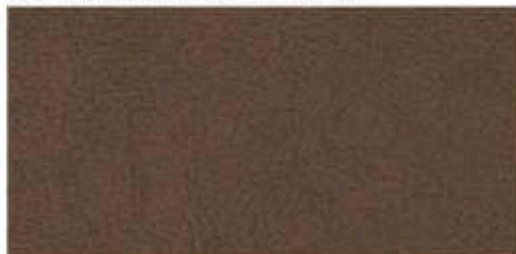


Light Titanium



Ebony

LEATHER-APPOINTED Standard on SLT



Dark Cashmere¹



Light Titanium

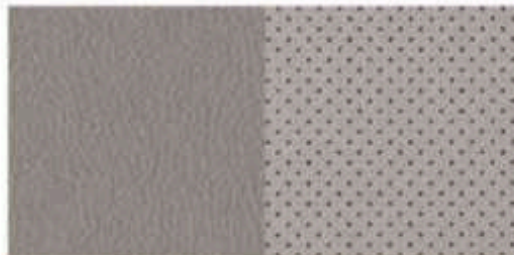


Ebony

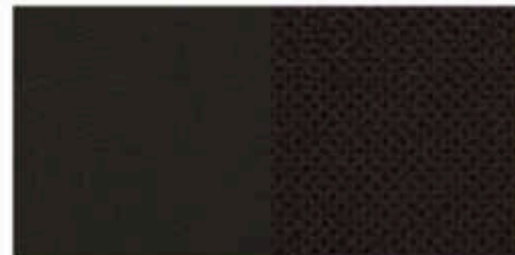
PERFORATED LEATHER-APPOINTED Available on SLT



Dark Cashmere¹



Light Titanium



Ebony

PERFORATED LEATHER-APPOINTED Standard on Denali



Cocoa/Dune¹



Ebony

¹Not available with night-purviewSM coating.

ADD YOUR OWN STYLE.

GMC Accessories are engineered and tested to meet the Professional Grade standards of your Acadia. Available individually or as part of a package, they allow you to further personalize your Acadia.



SIDE-WINDOW WEATHER DEFLECTORS Let fresh air in and keep rain, sleet and snow out. Available in Smoke.

ASSIST STEPS They make it easier to get into and out of your Acadia. Constructed of high-strength aluminum, these 6" chrome steps are topped with full-length black traction pads.

DUAL-HEAD-RESTRAINT DVD SYSTEM Rear-seat passengers will enjoy dual LCD monitors and DVD players built into the back of the front-seat head restraints. Includes wireless headphones and a remote control.

ROOF RACK CROSS RAIL PACKAGE Carry up to a 200-lb* load on the roof of your Acadia.

CARGO SHADE Keep the cargo area hidden with this Ebony fabric cargo shade. It easily attaches and folds or rolls for easy storage.

CARGO NET Enhance the efficiency of your Acadia with this black cargo net. It attaches easily to the sides of your cargo area to secure small, light items while in transit.

CARGO ORGANIZER This durable, flexible, collapsible organizer has multiple compartments, allowing you to carry lightweight items of various sizes. Can be folded flat and is black with GMC logo.

DISTINCTIVE WHEELS Choose from several styles designed to further enhance the appearance of your Acadia.

HITCH BALL ASSEMBLY This standard-size assembly comes complete with a chrome-finish tow ball, washer and retaining nut. Designed to fit standard ball mount assemblies (sold separately).

PREMIUM ALL-WEATHER FLOOR MATS Fits the floor configuration and a deep-ribbed pattern collects debris. Nibs on the back keep them in place. Available in Ebony, Light Titanium and Dune to match your interior.

TRIM LEVEL	SLE-1	SLE-2	SLT-1	SLT-2	DENALI
MECHANICAL					
DISC BRAKES 4-wheel antilock, 4-wheel disc	●	●	●	●	●
DRIVETRAIN Front-wheel drive	●	●	●	●	●
All-wheel drive	○	○	○	○	○
ENGINE 3.6L direct-injection V-6 VTE 261 hp and 265 lb-ft of torque (268 hp and 270 lb-ft of torque on Denali)	●	●	●	●	●
ENGINE BLOCK HEATER	○	○	○	○	○
ENGINE OIL LIFE MONITOR	●	●	●	●	●
EXHAUST Single with downlaid outlet	●	●	●	●	-
Dual with flow-through fascia design	-	-	-	-	●
STABILITRAK Stability control system and traction control	●	●	●	●	●
STEERING Power	●	●	-	-	-
Variable effort	-	-	●	●	●
SUSPENSION Front and rear independent	●	●	●	●	●
TRAILERING EQUIPMENT Includes heavy-duty cooling and factory-installed trailer hitch	○	○	○	○	○
TRANSMISSION 6-speed automatic electronically controlled with overdrive	●	●	●	●	●
SEATING					
SEAT TRIM Premium Cloth	●	●	-	-	-
Leather-appointed, first and second rows	-	-	●	●	-
Perforated leather-appointed seating, first and second rows	-	-	-	○	●
SEATS 4-way driver (includes lumbar control) and 2-way front-passenger buckets, manual adjustment	●	-	-	-	-
8-way power driver with power recline and lumbar control. Includes 2-way power front-passenger seat with manual recline and lumbar control on SLE-2 models.	-	●	●	-	-
8-way power driver with power recline and lumbar control, 2-position memory for driver's seat and outside rearview mirrors	-	-	-	●	●
8-way power front-passenger seat	-	-	●	●	●
Heated front seats	-	○	●	●	-
Heated and cooled front seats. Included with perforated leather-appointed seating surfaces.	-	-	-	○	●
60/40 split-folding 3-passenger third-row bench	●	●	●	●	●
8-passenger seating [2-2-2 configuration], includes second-row 60/40 split flat-folding bench seat with Smart Slide.	●	○	○	○	○
7-passenger seating [2-2-3 configuration], includes second-row flat-folding captain's chairs with Smart Slide.	-	●	●	●	●
INSTRUMENTATION AND CONTROLS					
ELECTRONIC CRUISE CONTROL	●	●	●	●	●
HEAD-UP DISPLAY Includes digital multifunction readouts. Requires Technology Package on SLT-2.	-	-	-	○	●
INSTRUMENTATION 6-gauge, outside temperature indicator and Driver Information Center	●	●	●	●	●
Enhanced Driver Information Center includes outside temperature indicator, digital compass display, trip odometer, oil life, average speed, distance and time to go, average fuel used, tire pressure monitor and Help menu	●	●	●	●	●
REAR VISION CAMERA SYSTEM With dynamic grid lines	●	●	●	●	●
STEERING WHEEL Tilt Wheel and telescopic	●	●	●	●	-
Power tilt and telescopic	-	-	-	-	●
Leather-wrapped with redundant audio controls	●	●	●	-	-
Heated leather-wrapped with audio controls. Includes mahogany wood trim on Denali models.	-	-	-	●	●
ULTRASONIC REAR PARKING ASSIST	●	●	●	●	●

KEY ● STANDARD ○ AVAILABLE - NOT AVAILABLE

TRIM LEVEL	SLE-1	SLE-2	SLT-1	SLT-2	DENALI
INTERIOR DETAILS					
CARGO STORAGE Under rear floor	●	●	●	●	●
CLIMATE CONTROL Air conditioning, single-zone manual	●	●	●	●	●
Tri-zone air conditioning with individual climate settings for driver and front passenger and second-/third-row controls	-	-	●	●	-
CONSOLES Overhead console with map lights. On SLT-1, SLT-2 and Denali models, includes Universal Home Remote.	●	●	●	●	●
Front center console with storage	●	●	●	●	●
CUPHOLDERS 10 (12 with 8-passenger seating)	●	●	●	●	●
DEFOGGER Rear window electric	●	●	●	●	●
FLOOR MATS Color-keyed, carpeted for all 3 rows, removable	●	●	●	●	-
Premium, Denali-specific, carpeted for all 3 rows	-	-	-	-	●
INSULATION Acoustical package	●	●	●	●	●
Premium acoustical package	-	-	-	-	●
LIGHTING Interior ambient light in instrument panel	●	●	●	●	●
MIRRORS Inside rearview, manual	●	-	-	-	-
Inside rearview, auto-dimming	-	●	●	●	●
POWER DOOR LOCKS	●	●	●	●	●
POWER OUTLET 3-prong, 120-volt, household-style. Included and only available with Rear-Seat Entertainment System.	-	-	○	○	○
POWER WINDOWS With driver express-down	●	●	●	●	-
With driver express-up and -down and passenger express-down	-	-	-	●	●
REMOTE KEYLESS ENTRY Programmable with 2 transmitters, panic button and extended range	●	●	●	●	●
REMOTE VEHICLE START	-	●	●	●	●
SILL PLATE Illuminated, front	-	-	-	-	●
SUNROOF 2-panel Dual Skycape, Tilt-sliding, front and fixed rear with sunscreen.	-	○	○	○	○
TECHNOLOGY PACKAGE Includes Head-Up Display, cargo-area audio system controls and High-Intensity Discharge projector low-beam headlamps. Requires Forward Collision Alert and Lane Departure Warning on SLT-2 trim.	-	-	-	○	●
UNIVERSAL HOME REMOTE 3-channel programmable. Includes garage-door opener.	-	-	●	●	●
ENTERTAINMENT/COMMUNICATION/NAVIGATION					
COLOR TOUCH RADIO AM/FM/SiriusXM® (standard 3-month trial period) capable with CD player, 8.5" diagonal touch-screen display, USB port* and auxiliary input jack	●	-	-	-	-
COLOR TOUCH RADIO AM/FM/SiriusXM® (standard 3-month trial period) capable with CD player, IntelliLink™ 8.5" diagonal touch-screen display, USB port* and auxiliary input jack	-	●	●	●	-
COLOR TOUCH NAVIGATION AM/FM/SiriusXM® (standard 3-month trial period) capable with CD player, IntelliLink™ 8.5" diagonal touch-screen display, USB port* and auxiliary input jack	-	-	○	○	●
REAR-SEAT ENTERTAINMENT SYSTEM Includes DVD player with remote control, overhead display, 2 sets of 2-channel wireless infrared headphones, auxiliary audio/video input jacks, 3-prong household-style power outlet and 70-speaker Bose® sound system supporting discrete 5.1 recorded material	-	-	○	○	○
REAR-SEAT USB PORTS Dual charge-only. Located rear of center console.	●	●	●	●	●

*If you subscribe after your trial period, subscriptions are continuous until you call SiriusXM to cancel. See SiriusXM Customer Agreement for complete terms at siriusxm.com. Other fees and taxes will apply. All fees and programming subject to change. For more information about RealTime™, visit siriusxm.com/realtime. XM satellite service is available only to those in the 48 contiguous U.S. and DC. Not compatible with all devices. **Full functionality requires compatible Bluetooth and smartphone. Some devices require USB connectivity. †Map coverage available in the United States, U.S. Virgin Islands, Puerto Rico and Canada.

TRIM LEVEL	SLE1	SLE2	SLT1	SLT2	DEAL1
------------	------	------	------	------	-------

ENTERTAINMENT/COMMUNICATION/NAVIGATION, continued

AUDIO 10-speaker Bose premium sound system with subwoofer	-	-	•	•	•
With 5.1 Surround Sound. Requires Rear-Seat Entertainment System.	-	-	○	○	○
Audio controls located in cargo area. Requires Technology Package on SLT-2.	-	-	-	○	•
SIRIUSXM SATELLITE RADIO Standard on all Acadia sound systems, including 3 trial months of service	•	•	•	•	•
NAVTRAFFIC ® Includes 3 trial months of service and only available with Color Touch Navigation®	-	-	○	○	•
BLUETOOTH ® For phone, personal call, phone connectivity to vehicle audio system	•	•	•	•	•
ONSTAR ® 6 months of Directions & Connections Plan	•	•	•	•	•

EXTERIOR STYLING AND FUNCTIONALITY

DOOR HANDLES Chrome. On SLE models, includes black beltline molding; on SLT-1, SLT-2 and Deal1 models, includes bright beltline molding.	•	•	•	•	•
FASCIAS Front and rear body-color. Deal1-specific.	-	-	-	-	•
GLASS Privacy Glass-Ray except windshield and driver- and front-passenger-side glass	•	•	•	•	•
GRILLE Signature Deal1	-	-	-	-	•
LIGHTS Dual halogen projector-beam headlamps	•	•	•	•	-
High-intensity Discharge low-beam headlamps, with halogen projector high beams. Requires Technology Package on SLT-2.	-	-	-	○	•
Daytime running lamps, LED	•	•	•	•	•
Front halogen fog lamps	-	-	•	•	•
MOLDINGS Body-color body-side	•	•	•	•	-
Deal1-specific, body-color body-side with chrome insert and rocker molding	-	-	-	-	•
OUTSIDE MIRRORS Power-adjustable, manual-folding, black	•	•	-	-	-
Heated, power-adjustable, manual-folding with integrated turn-signal indicators, body-color	-	-	•	-	-
Heated, power-adjustable, power-folding and driver-side auto-dimming, with integrated turn-signal indicators and driver-side memory, body-color	-	-	-	•	•
REAR LIFTGATE Manual	•	-	-	-	-
Power	-	•	•	•	•
WIPERS Front and rear intermittent with washers	•	•	•	•	•
ROOF RAILS	•	•	•	•	-
Bright, Deal1-specific	-	-	-	-	•

SAFETY AND SECURITY

AIR BAGS ® Includes driver and front-passenger frontal air bags with Passenger Sensing System, front-row side-impact air bags and head curtain side-impact air bags with rollover protection in all 3 rows	•	•	•	•	•
Driver inboard seat-mounted front center side-impact air bag	-	•	•	•	•
FORWARD COLLISION ALERT AND LANE DEPARTURE WARNING	-	-	○	○	•
REAR CROSS TRAFFIC ALERT	-	-	-	•	•
SIDE BLIND ZONE ALERT	-	-	-	•	•
TIRE PRESSURE MONITORING SYSTEM Does not monitor spare tire	•	•	•	•	•
VEHICLE THEFT-DETERRENT SYSTEM With PASS-Key® II and engine immobilizer	•	•	•	•	•

STANDARD TECHNICAL DATA

3.6L V-6 VVT DI ENGINE	34.0 x 85.6
Bore and stroke (mm)	
Horsepower @ rpm	201 @ 6000 (E95 on Deal1)
Torque @ rpm (lb-ft)	258 @ 3400 (279 on Deal1)
Compression ratio	11.3:1
Valvetrain	Dual-overhead cam with 4 valves per cylinder
Fuel delivery	Spark-ignited direct fuel injection

TRANSMISSION	6-speed automatic Hydra-Matic 6T70
---------------------	------------------------------------

STANDARD FRONT-WHEEL DRIVE (FWD)	
---	--

AVAILABLE ALL-WHEEL DRIVE (AWD)	Active Intelligent AWD
--	------------------------

BRAKES	4-wheel disc with antilock braking system
---------------	---

STEERING	Hydraulic rack-and-pinion system
-----------------	----------------------------------

BATTERY	690 cold-cranking amps
----------------	------------------------

ALTERNATOR	170 amps
-------------------	----------

FUEL TANK CAPACITY	22.0 gallons (approx.)
---------------------------	------------------------

EPA-ESTIMATED MILEAGE	
FWD	17 city/24 hwy
AWD	16 city/23 hwy

TRAILERING DATA	
FWD/AWD	Axis ratio: 3:16, Maximum Trailer Weight:† 5200 lbs

GROSS VEHICLE WEIGHT RATING (GVWR) (LBS)	
FWD/AWD	5411/5458

EXTERIOR DIMENSIONS (IN)	
Overall Height	72.6 with roof rails
Overall Width	76.5
Overall Length	200.8
Wheelbase	116.9

INTERIOR DIMENSIONS	
Head Room	Front 40.3/Rear 39.6/36.4 in
Leg Room	Front 41.3/Rear (max) 36.9/33.2 in
Shoulder Room	Front 61.8/Rear 61.0/57.8 in
Hip Room	Front 58.0/Rear 57.0/46.3 in
Interior Volume	171.3 cu. ft.

CARGO AREA DIMENSIONS (CU. FT.)	
Second and third rows folded	116.1
Second row up/third row folded	70.1
Behind third row	24.1

†If you trailer the after your first year, accommodations are restricted until you visit SiriusXM to cancel. See SiriusXM Customer Agreement for complete terms at siriusxm.com. Other fees and taxes will apply. All fees and programming subject to change. For more information about XM Traffic, visit www.comcast.com/xm website service is available only to those in the 48 contiguous USA and DC. *Map coverage available in the United States, U.S. Virgin Islands, Puerto Rico and Canada. †Go to getonboard.com to find out which phones are compatible with the vehicle. †Visit www.comcast.com for details and system limitations. †A NOTE ON CHILD SAFETY: Always use safety belts and the correct child restraint for your child's age and size, even with air bags. Even in vehicles equipped with the Passenger Sensing System, children are safe when properly secured in a rear seat in the appropriate infant, child or booster seat. Never place a rear-facing infant restraint in the front seat of any vehicle equipped with an active frontal air bag. See your vehicle Owner's Manual and child safety seat instructions for more safety information. †Maximum trailer weight ratings are calculated assuming a base vehicle, except for any optional necessary to achieve the rating, plus driver. The weight of other optional equipment, passengers and cargo will reduce the maximum trailer weight your vehicle can tow. See your dealer for details. †When properly equipped, includes weight of vehicle, passengers, cargo and equipment. †Cargo and load capacity limited by weight and distribution.

PRO GRADE PROTECTION

For 2015, Acadia comes with the Pro Grade Protection Plan, which includes 2-year/24,000-mile recommended scheduled maintenance,¹ 3-year/36,000-mile bumper-to-bumper limited warranty² and 5-year/100,000-mile powertrain limited warranty.³ Roadside Assistance and Courtesy Transportation.

Starting with the owner orientation—and full tank of gas—you receive when you take possession of your Acadia to the 24-Hour Roadside Assistance, Courtesy Transportation and Travel Benefits, you receive a portfolio of owner privileges that lasts throughout your warranty. For expert product information, Roadside Assistance or other services, call 1-800-GMC-8762.

TRAVEL BENEFITS AND ROADSIDE ASSISTANCE Available around the clock: trip routing service, a program for reimbursement for trip interruption due to necessary warranty repairs, towing, flat tire change, jump-starts and more for 5 years or 100,000 miles (whichever comes first).

COURTESY TRANSPORTATION Available at participating dealers: shuttle service, reimbursement of certain public transportation or fuel expenses for overnight warranty repairs and courtesy rental for overnight work repairs. See your dealer for details.

GMC OWNER CENTER A complimentary one-stop resource to enhance your GMC ownership experience. It's easy to sign up. Just go to gm.com/gmownercenter/gmc.

ONSTAR



OnStar is a core asset of your Acadia. Benefiting from more than a decade of innovative development, it is both a highly advanced technology—fully integrated within the vehicle—and a warm human service. Standard on all Acadia models are 6 months of the OnStar Directions & Connections Plan, including the convenience of available Hands-Free Calling.⁴ It also includes Automatic Crash Response, Speed Vehicle Assistance, link to Emergency Services, Roadside Assistance, Remote Door Unlock, OnStar Vehicle Diagnostics, Cruise Assist and Remote Horn and Lights. OnStar services require vehicle electrical system (including battery), wireless service and GPS satellite signals to be available and operating for features to function properly. OnStar acts as a link to existing emergency service providers. Not all vehicles may transmit all crash data. Visit onstar.com for coverage maps, details and system limitations. Services vary with conditions.

SIRIUSXM SATELLITE RADIO



SiriusXM Satellite Radio⁵ is standard on all Acadia models. It includes 3 trial months of service. SiriusXM Satellite Radio makes your drive come alive with commercial-free music channels from virtually every genre, artist-dedicated channels, live performances and more. Tune in to live play-by-play from the biggest sports, exclusive entertainment from top personalities, compelling talk, hilarious comedy, world-class news, local traffic and weather and family-friendly programming. Welcome to the world of satellite radio. Visit siriusxm.com for details.

GMC CERTIFIED SERVICE

GMC Certified Service To help your Acadia live up to its performance promise, GMC Certified Service—found exclusively at your GMC dealer—is there. With all the engineering excellence in Acadia, GM-trained technicians have the expertise to care for all of it.

ADDITIONAL NOTES

A NOTE ON CHILD SAFETY Always use safety belts and the correct child restraint for your child's age and size, even with air bags. Even in vehicles equipped with the Passenger Sensing System, children are safer when properly secured in a rear seat in the appropriate infant, child or booster seat. Never place a rear-facing infant restraint in the front seat of any vehicle equipped with an active frontal air bag. See your vehicle Owner's Manual and child safety seat instructions for more safety information.

TRAILERING AND OFF-ROAD INFORMATION Please carefully review the Owner's Manual for important safety information about trailering or off-road driving in your vehicle.

FLEET ORDERS Some standard content may be deleted with fleet orders. See dealer for details.

ENGINES GMC products are equipped with engines produced by GM Powertrain or other suppliers to GM worldwide. The engines in GMC products may also be used in other GM makes and models.

GMC.COM See more of Acadia on our Web site: gm.com/acadia. More photos and information; hot links to related subjects; convenient dealer locator; pricing guide; spec out your own vehicle. Or call 1-800-GMC-8762.

BUYPOWER CARD Now it's even easier to get into the GMC of your dreams. Every purchase gives you Earnings redeemable toward part or even all of a new GMC, Chevrolet, Buick or Cadillac. Every year, enjoy 5 percent Earnings on your first \$5,000 in purchases and 0 percent unlimited Earnings after that. No expiration on Earnings and no limit on how much you can earn or redeem. Learn more at buypowercard.com/catalog. YOUR CARD IS THE KEY.[™]



IMPORTANT WORDS ABOUT THIS CATALOG We have tried to make this catalog comprehensive and factual. We reserve the right, however, to make changes at any time, without notice, in prices, colors, materials, equipment, specifications, models and availability. Specifications, dimensions, measurements, ratings and other numbers in this catalog and other printed materials provided at the dealership or affixed to vehicles are approximates based upon design and engineering drawings and prototypes and laboratory tests. Your vehicle may differ due to variations in manufacture and equipment. Since some information may have been updated since the time of printing, please check with your GMC dealer for complete details. GMC reserves the right to lengthen or shorten the model year for any product for any reason, or to start and end model years at different times. All comparative claims are based on the latest information available at the time of printing and GM Large Utility segment.

AN IMPORTANT NOTE ABOUT ALTERATIONS AND WARRANTIES Installations or alterations to the original equipment vehicle (or chassis) as distributed by General Motors are not covered by the General Motors New-Vehicle Limited Warranty. The special body company, assembler, equipment installer or upfitter is solely responsible for warranties on the body or equipment and any alterations (or any effect of the alterations) to any of the parts, components, systems or assemblies installed by GM. General Motors is not responsible for the safety or quality of design features, materials or workmanship of any alterations by such suppliers.

NEW-VEHICLE LIMITED WARRANTY All GMC light-duty vehicles come with a fully transferable, non-deductible 5-year/100,000-mile (whichever comes first) Powertrain Limited Warranty. GM vehicles registered in the USA are also covered for 3 years or 36,000 miles (whichever comes first). Coverage includes tires and towing to your nearest GMC dealership. Repairs will be made to correct any vehicle defect and most warranty repairs will be made at no charge. In addition, rust-through corrosion will be covered for 6 years or 100,000 miles (whichever comes first). Acadia also comes with a 2-year/24,000-mile (whichever comes first) recommended scheduled maintenance plan.¹ See dealer for details.

ASSEMBLY GMC vehicles and their components are assembled or produced by different operating units of General Motors, its subsidiaries or suppliers to GM worldwide. We sometimes find it necessary to produce GMC vehicles with different or differently sourced components than originally scheduled. Since some options may be unavailable when your vehicle is assembled, we suggest that you verify that your vehicle includes the equipment you ordered or, if there are changes, that they are acceptable to you.

GMMOBILITY.COM (1-800-323-9935) GM Mobility offers financial assistance for eligible adaptive equipment to make automotive travel easier for persons with disabilities or special transportation needs. To learn more about special GM Mobility offers, visit gmmobility.com.



¹Coverage only when built at all changes with filter, tire rotations and oil-change inspection, according to your new vehicle's recommended maintenance schedule, for up to 2 years or 24,000 miles, whichever comes first. Does not include air filter. Maximum of four service events. See participating dealers for other restrictions and complete details. ²Whichever comes first. See dealer for limited warranty details. ³Visit onstar.com for coverage map, details and system limitations. ⁴OnStar Hands-Free Calling requires existing OnStar vehicle contract and proper device. Not available in certain markets. Calls can be made in U.S. and Canada only. ⁵If you subscribe after your trial period, subscription are continuous and you will pay for service. See SiriusXM Customer Agreement for complete terms of subscription and other fees and taxes will apply. All fees and programming subject to change. For more information about NewTraffic, visit siriusxm.com/newtraffic. XM satellite service is available only to those in the 48 contiguous USA and DC.

©2014 General Motors. All rights reserved. GM, the GM logo, GMC, the program, emblems, vehicle model names, vehicle body design and other marks appearing in this catalog are the trademarks and/or service marks of General Motors, its subsidiaries, affiliates or licensors. Facebook is a registered trademark of Facebook, Inc. Twitter is a registered trademark of Twitter, Inc. YouTube is a registered trademark of Google, Inc. Sirius, XM and all related marks and logos are trademarks of SiriusXM Radio, Inc.

VISIT US AT GMC.COM

