



ACADIA

2016

00

GMC WE ARE PROFESSIONAL GRADE



A C A D I A

Precision matters. It matters in every pound-foot of torque, every millimeter, every decibel and every stitch of leather. That's what drives us to reimagine solutions and create rewarding driving experiences. It's why the 2016 Acadia is the crossover engineered to help manage life's ever-changing demands. With models accommodating up to eight passengers, it also offers ingenious technologies to keep you connected and safety innovations to help protect you.





EXTERIOR | 2

INTERIOR | 8

PERFORMANCE | 20

SECURITY | 22

SELECTION | 26

ACADIA DENALI: THE HEIGHT OF STYLE.

Acadia Denali combines premium materials, signature styling and advanced technologies to make it the premier choice among crossovers. This distinctive design is the result of smooth, flowing lines running uninterrupted from front to rear. Chrome appointments and features leave little doubt it's every inch a Denali.

HIGH-INTENSITY
DISCHARGE (HID)
PROJECTOR-BEAM
HEADLAMPS AND
LED DAYTIME
RUNNING LAMPS

ICONIC DENALI GRILLE

MACHINED ALUMINUM
20" WHEELS OR
AVAILABLE CHROME-
CLAD ALUMINUM
20" WHEELS

DUAL FLOW-THROUGH
CHROME EXHAUST
OUTLETS





ACADIA DENALI IN EBONY TWILIGHT METALLIC
shown with available equipment.



ACADIA SLT IN EBONY TWILIGHT METALLIC
shown with available equipment.

ACADIA SLT: OUR SCULPTORS WORK IN SHEET METAL.

GMC designers formed the five-door exterior of Acadia SLT with a clear understanding of what you demand in a premium crossover without sacrificing an ounce of artful style. The low height of the rear bumper makes loading easier, while the low step-in door height allows people to enter with ease. You'll quickly find SLT offers many details that combine art and function.

POWER LIFTGATE

HEATED POWER-
RETRACTABLE
MIRRORS [AVAILABLE]

PROJECTOR-BEAM
FOG LAMPS

19" ALUMINUM
WHEELS



A REFLECTION OF PREMIUM.

Acadia's sculpted surfaces are where form elegantly meets function, highlighted by chrome accents to create an overall premium appearance. Its design brings aerodynamics into play to help you achieve more in your daily travels without all the resistance.



DENALI GRILLE The distinctive pattern of its 3-D chrome grille is a signature detail unique to the top-of-the-line Denali series.



PROJECTOR-BEAM HEADLAMPS Available High-Intensity Discharge (HID) headlamps, LED daytime running lamps and LED taillamps increase visibility, giving Acadia a necklace of illumination.



WRAPAROUND REAR GLASS The seamless rear glass design provides a clean, streamlined look.



HEATED POWER-RETRACTABLE MIRRORS Helping remove snow, frost and fogging, these available power mirrors offer excellent visibility and extra clearance. Shown with optional Side Blind Zone Alert.



POWER LIFTGATE This available feature opens with a touch of your key fob for easy access to the cargo area. Close it the same way, or use the button on the liftgate or the center console.

PROVIDES A WARM WELCOME, AND A COOL ONE, TOO.

Acadia Denali is designed with an inviting level of comfort, thanks to refinements such as heated and cooled front seats, quiet surroundings and the craftsmanship expected from the height of GMC engineering. It combines premium materials such as perforated leather-appointed first- and second-row seats with the precise detailing of contrasting French seam stitching. Denali greets you with even more comforting amenities.



ACADIA DENALI INTERIOR IN COCCA DUNE
shown with available equipment.



HEATED LEATHER-
WRAPPED STEERING
WHEEL

BOSE® 10-SPEAKER
SOUND SYSTEM

HEAD-UP DISPLAY

DENALI ACOUSTIC
PACKAGE



ACADIA SLT INTERIOR IN EBONY
shown with available equipment.

YOUR COMFORT. WELL ENGINEERED.

Every seat in Acadia SLT provides a premium ride. Up front, you'll find leather-appointed seats in the first two rows as well as surrounding amenities that let you know you're in for something unexpected. SLT also offers a second-row bench seat so altogether you can accommodate up to eight adults, or choose your second row with a pair of captain's chairs to provide seating for seven. You'll also find a host of additional comfort and convenience features.

TWO-POSITION
DRIVER MEMORY SEAT
AND MIRRORS (AVAILABLE)

REAR VISION CAMERA
SYSTEM

STEERING-WHEEL-
MOUNTED CONTROLS

TRI-ZONE CLIMATE
CONTROL



VOICE-ACTIVATED
INTELLILINK
[AVAILABLE]†

BLUETOOTH®
CONNECTIVITY†

TILT AND TELESCOPIC
STEERING WHEEL

HEAD-UP DISPLAY
[AVAILABLE]

ACADIA DENALI INTERIOR IN COCOA DUNE
shown with available equipment.

DESIGNED SO YOU HAVE TO LOOK NO FURTHER.

We understand that you're most comfortable when you're informed and in full command. We engineered Acadia so that available driver-alert technologies, the available Navigation System,³ entertainment and climate controls are positioned in clear view and close at hand. Yet, of course, Acadia offers many more ways to help you stay in control.

¹Full functionality requires compatible Bluetooth and smartphone. Some devices require USB connectivity. ²Go to my.gmc.com/learn to find out which phones are compatible with the vehicle. ³Map coverage available in the United States, U.S. Virgin Islands, Puerto Rico and Canada.

MAKES ANY SPOT A HOTSPOT.

To keep you connected, informed and entertained, Acadia offers available OnStar 4G LTE.¹ Gain fast Internet speeds by adding an available Wi-Fi[®] hotspot to turn Acadia into your mobile entertainment center.



ONSTAR 4G LTE HOTSPOT¹ New available OnStar 4G LTE with built-in Wi-Fi capability (free trial for 3 months/3GB, whichever comes first) means an Internet connection for Web-enabled devices from up to 50 feet around Acadia. It's reliably fast, easy to use and handles up to seven devices.

COLOR TOUCH AUDIO SYSTEM This standard system uses an intuitive 6.5" diagonal high-definition touch-screen, making it easy to find important information. It includes AM/FM/CD radio, customizable home page and USB² and auxiliary inputs for your MP3 player. SiriusXM³ capabilities (standard 3-month trial period) are included on most models.

INTELLILINK⁴ Standard on most Color Touch Audio systems and included with available Color Touch Navigation,⁵ IntelliLink provides smartphone integration and voice-activated control of your communication and entertainment selections, including placing a call, changing stations, streaming Internet radio stations Pandora[®] and Stitcher[™] SmartRadio or accessing your music library. It also converts text messages into voice messages.

COLOR TOUCH NAVIGATION⁵ WITH INTELLILINK⁴ The available NAV system, which includes IntelliLink, adds multiple map views. It also features 3 months of NavTraffic,⁶ so you'll get continuously updated traffic information incorporated into the Navigation System.

¹Devices must be WPA2-compliant with active OnStar service and data plan. Wi-Fi devices manufactured prior to 2006 may not be compatible. Please consult your device manufacturer for information regarding the WPA2 security protocol and Wi-Fi device compatibility. Vehicle must be started or in accessory mode to access Wi-Fi. Visit onstar.com for details and system limitations. ²Not compatible with all devices. ³Standard for 3 months. If you subscribe after your trial period, subscriptions are continuous until you call SiriusXM to cancel. See SiriusXM Customer Agreement for complete terms at siriusxm.com. Other fees and taxes will apply. All fees and programming subject to change. For more information about NavTraffic, visit siriusxm.com/navtraffic. XM Satellite service is available only to those in the 48 contiguous USA and DC. ⁴Not available on SL trim. Full functionality requires compatible Bluetooth and smartphone. Some devices require USB connectivity. Data plan rates apply. ⁵Map coverage available in the United States, U.S. Virgin Islands, Puerto Rico and Canada. ⁶Go to my.gmc.com/learn to find out which phones are compatible with the vehicle.



USB CONNECTIVITY Plug into the USB port² and control most of your MP3 player's functions, including playlists and song selection, with available steering-wheel-mounted radio controls.

SIRIUSXM SATELLITE RADIO³ Enjoy available SiriusXM Satellite Radio (includes a 3-month trial subscription to the XM Premier Package).

MP3 PLAYBACK Bring the music and entertainment you love to your Acadia from most MP3 devices, including many smartphones.

HEAD-UP DISPLAY This available system (standard on Denali) projects important driving information at eye level on your windshield, such as speedometer and rpm readings, outside air temperature and more.



REAR VISION CAMERA SYSTEM It displays a real-time image in the color touch-screen when Acadia is in reverse, making it easier to back up to a trailer or negotiate a tight space. Shown with available Rear Cross Traffic Alert. WATCH IT AT GMC.COM/VISION2016.

DENALI ACOUSTIC PACKAGE Denser sound-absorbing materials add to Acadia's already quiet environment.

BLUETOOTH⁵ FOR PHONE Keep your eyes on the road by activating Bluetooth on your phone or portable device.

120-VOLT AC POWER OUTLET An available 150-watt/120-volt AC household-current grounded power outlet is included with the Rear-Seat Entertainment System.

IN-CONSOLE POWER PORT A 12-volt DC power outlet is located in the center console.



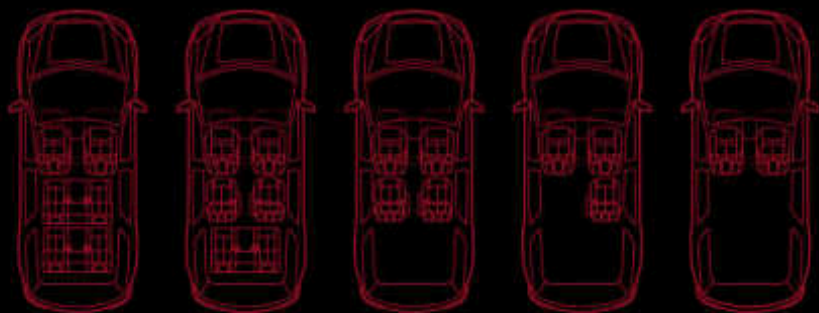
REAR-SEAT ENTERTAINMENT SYSTEM This available system offers gaming and DVD playback for rear-seat passengers. It includes a remote and two sets of wireless infrared headphones (batteries included).

10-SPEAKER BOSE AUDIO SYSTEM The available premium 10-speaker Bose system delivers the realism and presence of a live performance. Add available 5.1 Surround Sound when you choose the Rear-Seat Entertainment System.



URNS PASSENGER ROOM INTO REC ROOM. AND VICE VERSA.

Acadia is designed to quickly and easily offer multiple seating and cargo configurations. Choose eight-passenger seating and get a sliding second-row bench seat that fits three adults comfortably. Select the available seven-passenger configuration, and the second row has two captain's chairs. To make third-row entry and exit easier, Acadia features Smart Slide second-row seats that move forward with just one hand.



FOLD-FLAT FUNCTIONALITY FOR THE IMPRESSIVE CAPACITY OF A FULL-SIZE SUV; THE SECOND- AND THIRD-ROW SEATS FOLD FORWARD TO CREATE A FLAT LOAD FLOOR. THIS FLEXIBILITY GIVES YOU UP TO 116.1 CU. FT.¹ OF CARGO CAPACITY.

¹Cargo and load capacity limited by weight and distribution.

CUPHOLDERS IN
ALL THREE ROWS

REMOTE POWER
LIFTGATE [AVAILABLE]

SECOND-ROW
PASSENGER CONTROLS

TRI-ZONE CLIMATE
CONTROL [AVAILABLE]





ACADIA SLT INTERIOR IN EBONY
shown with available equipment.

PUTS CONTROL IN YOUR HANDS.

Acadia surrounds you with a quiet environment, premium materials and convenience to elevate your traveling experience. The results of precision engineering are also found in how the surroundings are in your control.



CENTER CONSOLE The convenient and spacious center console gives you multiple storage compartments. The padded armrest is movable to keep you comfortable in any seating position.

DRIVER INFORMATION CENTER It includes the odometer and A/B trip odometers, as well as a message center to keep you informed about vital vehicle functions and driving conditions.

CUPHOLDERS There are two console-mounted cupholders and two in the front doors for driver and passenger. Additional holders are in the second row, with one in each door, plus two more molded into the third-row side panels.

NOISE SUPPRESSION To reduce road and wind noise, Acadia uses sound-blocking and -deadening materials to fill even the most minute gaps and sound paths.

SILL PLATE Step through the driver's or front passenger's door of Acadia Denali and its illuminated, satin-chrome sill plates let you know you've entered luxury.

DENALI ACOUSTIC PACKAGE Additional sound-absorbing materials add to the already quiet environment.



TILT AND TELESCOPIC STEERING WHEEL On Denali models, the power tilt and telescopic steering wheel moves up/down and in/out, making it easy to set a comfortable driving position.

HEATED STEERING WHEEL This heated wheel adds warmth to both the leather-wrapped and deluxe wood versions (standard on SLT-2 and Denali).

REMOTE KEYLESS ENTRY At a range of up to 195', one touch will lock or unlock your Acadia or flash its lights and sound the horn to help you find it in a parking lot.

TRI-ZONE CLIMATE CONTROL The available tri-zone climate control allows the driver and front-seat passenger to set separate temperatures.

STEERING-WHEEL-MOUNTED CONTROLS Access the audio system and your phone with your fingertips. Depending on the model, it controls most music search features of compatible MP3 players, as well as phone calls.

REMOTE VEHICLE START Warm up—or cool off—your Acadia for up to 10 minutes without leaving the house. This available feature can start Acadia up to 195' away. With tri-zone climate control, the system automatically heats or cools the cabin.

REAR CONTROLS Second-row passengers get their own controls included with the available tri-zone climate control system, so they're able to set the temperature and fan speed to their liking.

REMOTE POWER LIFTGATE This available liftgate opens with a touch of your key fob for easier access to the cargo area. Close it the same way, or use the button on the liftgate or the center console.

DUAL-PANEL SUNROOF The available dual-panel sunroof lets people seated in the second and third rows enjoy the outdoors, too.

HANDLES THE ROAD LIKE A PRO.

Acadia's powertrain and handling more than live up to their Professional Grade status. Its 3.6L V-6 engine is the ideal expression of what GMC engineering is all about—powerful yet efficient performance. The foundation of Acadia's premium character is a strong chassis and sophisticated suspension.

ENGINE

3.6L V-6 VVT Engineered for responsiveness at all speeds, the 3.6L is the ideal blend of power and efficiency. With a direct-injected 24-valve, dual-overhead-cam design, it accelerates smoothly and quickly for confident highway passing and merging.

VARIABLE VALVE TIMING This provides the power of a high-performance engine with the low-speed response you need for situations such as trailering or climbing steep inclines.

OIL LIFE MONITOR For long life and durability, few things are more important than changing your oil at the right time. The Oil Life Monitor updates you with a message in the Driver Information Center.

ONSTAR VEHICLE DIAGNOSTICS¹ Included with the OnStar Basic Plan for 5 years, every month, your vehicle can run a thorough check of its engine, transmission, antiflock brakes and more, and e-mail you the results. And if you want to run a diagnostic check when you're behind the wheel, just ask an Advisor to run one for you. You'll have confidence knowing your car is checking up on itself and that you can check on it anytime.

TRANSMISSION

6-SPEED AUTOMATIC OVERDRIVE

TRANSMISSION Designed to work seamlessly with the 3.6L, the transmission chooses the best gear for efficiency or power based on your driving style. It features Driver Shift Control, allowing you to manually shift gears for optimal control.

SUSPENSION

WIDE STANCE/LONG WHEELBASE Acadia's long wheelbase produces a smooth ride at highway speeds, along with stability and sure-footed cornering.

FULLY INDEPENDENT SUSPENSION

Engineered for precise control and premium refinement, even on poorly maintained roads, is a four-wheel independent suspension.

POWER RACK-AND-PINION STEERING

Power steering provides accurate response and a positive on-center feel at highway speeds, as well as low-speed assist for maneuvering in tight spaces.



¹Capabilities vary by model. Visit onstar.com for details and system limitations. ²Before you buy a vehicle or use it for trailering, carefully review the trailering section of the Owner's Manual. The weight of passengers, cargo and options or accessories may reduce the amount you can tow.

ADVANCED DUAL-FLOW VALVING This feature in Acadia Denali's front suspension delivers a smoother ride and improved handling across a broad range of driving conditions.

ALL-WHEEL DRIVE (AWD) Get an extra measure of traction and control in wet or dry weather with an available fully automatic AWD system.

ANTILOCK BRAKING SYSTEM (ABS)
Confident stopping in a variety of conditions comes from four-channel antilock brakes.

TRACTION CONTROL SYSTEM To make the most of available traction on many road surfaces, the system sends power to the wheels with the most grip, so you can move forward with better control.

POWER FOUR-WHEEL DISC BRAKES For outstanding braking performance in most conditions, power four-wheel disc brakes are standard on every model.

TRAILERING PACKAGE Acadia achieves a maximum trailer weight rating of up to 5200 lbs.² This available package includes a heavy-duty cooling system, a factory-installed trailer hitch with a standard 2" receiver, attaching points for safety chains and a seven-pin trailer harness with a built-in universal adapter.



YOUR WELL-BEING IS FIRST AND FOREMOST.

The industry-first and GM-exclusive available Front Center Air Bag¹ is designed to help protect you in a collision. Acadia also offers the available Forward Collision Alert and Lane Departure Warning. For 2015, Acadia received a 5-Star Overall Vehicle Score² for safety.



DRIVER AWARENESS Safety features are no substitute for the driver's responsibility to operate the vehicle in a safe manner. The driver should remain attentive to traffic, surroundings and road conditions at all times. Read the Acadia Owner's Manual for more important safety information.

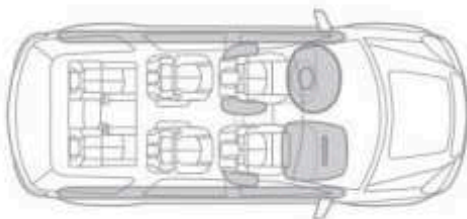
REAR CROSS TRAFFIC ALERT Monitoring your surroundings and working with the Rear Vision Camera System, it's available to send audio and visual warnings, alerting you to cross traffic while backing up (available on SLT-1 and standard on SLT-2 and Denali).

DRIVER ALERT SYSTEMS Forward Collision Alert produces audible and visual signals if you are rapidly approaching another vehicle and a collision may be imminent. Lane Departure Warning alerts you if you wander from your lane without using the turn signal. They're standard on Denali and available on SLT-1 and SLT-2.

SIDE BLIND ZONE ALERT Radar-equipped sensors monitor blind spots, alerting the driver via audio and visual warnings to help reduce the risk of collisions (available on SLT-1 and standard on SLT-2 and Denali).

LED DAYTIME RUNNING LAMPS By operating the LED lamps in the daytime, you gain recognition by other drivers from a greater distance, providing an extra measure of security.

FRONT CENTER AIR BAG¹ The available Front Center Air Bag is designed to help protect drivers and front-seat passengers in far-side crashes where the affected occupant is on the opposite, non-struck side of the vehicle. SEE IT IN ACTION AT GMC.COM/REASSURING2016.



SIDE-IMPACT AIR BAGS¹ They are mounted on the driver and front-passenger seats to help protect the thorax and pelvic regions of the driver and front passenger in a side-impact collision.

HEAD CURTAIN SIDE-IMPACT AIR BAGS¹ They unfurl from the roof rail like a protective curtain for outboard passengers and can be activated by either rollover or side-impact sensors.

FRONTAL AND SIDE-IMPACT AIR BAGS¹ To help reduce the risk of injury to driver and front passengers, the dual-stage frontal air bags gauge crash severity, then employ one or two levels of inflation.

LATCH CHILD SEAT ANCHORING SYSTEM Lower Anchors and Top tethers for CHildren [or LATCH] enables a child seat top tether strap to be attached to limit movement in a forward crash, helping reduce the chance of injury.

PASS-KEY III THEFT DETERRENT SYSTEM A tiny chip found in your ignition key prevents unauthorized starting attempts.

REINFORCED STEEL SAFETY CAGE DESIGN A robust body-frame-integral structure is engineered to help maintain the integrity of the passenger compartment in the event of a collision.

STABILITRAK STABILITY CONTROL SYSTEM To help you stay in control when road surfaces are loose, snowy, icy, wet or uneven, StabiliTrak monitors how Acadia is responding to your steering and braking commands.

¹Air bag inflation can cause severe injury or death to anyone too close to the air bag when it deploys. Be sure every occupant is properly restrained. See Owner's Manual for more information. Always use safety belts and the correct child restraint for your child's age and size, even with air bags. Even in vehicles equipped with the Passenger Sensing System, children are safer when properly secured in a rear seat in the appropriate infant, child or booster seat. Never place a rear-facing infant restraint in the front seat of any vehicle equipped with an active frontal air bag. See your Owner's Manual and child safety seat instructions for more safety information. ²Government 5-Star Safety ratings are part of the National Highway Traffic Safety Administration's [NHTSA] New Car Assessment Program (www.SaferCar.gov).

PROFESSIONAL GRADE PROTECTION.

Pro Grade Protection is standard on every 2016 Acadia. From scheduled maintenance to protecting your entire vehicle, you can drive with confidence.

INCLUDES 2 SCHEDULED MAINTENANCE VISITS DURING THE FIRST 2 YEARS/24,000 MILES¹

3-YEAR/36,000-MILE BUMPER-TO-BUMPER LIMITED WARRANTY²

5-YEAR/50,000-MILE POWERTRAIN LIMITED WARRANTY³

ACADIA DENALI IN EBONY TWILIGHT METALLIC
shown with available equipment.



WE'RE AS CLOSE AS THE BLUE BUTTON.



Standard for 6 months, the OnStar Guidance Plan² (trial excludes Hands-Free Calling minutes) lets you connect to a specially trained OnStar Advisor just by pressing the blue OnStar button in your Acadia.

ONSTAR WITH 4G LTE AND BUILT-IN WI-FI® HOTSPOT⁴ Now your Acadia has an available built-in Wi-Fi hotspot for connecting up to seven tablets, laptops or mobile devices at 4G LTE speed, so the content you crave is always headed where you are. Requires a data plan after the 3-month trial period (3 months of data or 3GB, whichever comes first).

ONSTAR BASIC PLAN⁵ With the Basic Plan, you've got a powerful connection to your vehicle and the world around you standard for 5 years at no additional cost to you. You'll have access to select services, which include limited features of the OnStar RemoteLink mobile app that lets you remote-start your car (if equipped), pinpoint your vehicle on a map on your smartphone and manage your vehicle's Wi-Fi hotspot (if equipped). Plus, send a destination to your in-vehicle navigation screen and lock or unlock your doors—all from your mobile device. Your vehicle can run diagnostic checks on itself and remind you of servicing needs by e-mail.

AUTOMATIC CRASH RESPONSE In a crash, built-in sensors can automatically alert an OnStar Advisor who is immediately connected into your vehicle to see if you need help—even if you can't ask for it.

EMERGENCY SERVICES One push of the red emergency button gives you a priority connection to a specially trained OnStar Advisor who can direct emergency services to your exact location and offer critical assistance until help arrives. With OnStar, you're never alone.

CRISIS ASSIST During severe weather or other crisis situations, OnStar can provide a quick, central point of contact when you need emergency assistance, navigation help or information.

ROADSIDE ASSISTANCE⁶ If you're stranded, have a flat tire or need a tow truck, just ask an OnStar Advisor to get help to your exact location to get you back on the road quickly.

STOLEN VEHICLE ASSISTANCE⁷ If your vehicle is stolen, OnStar can use GPS to pinpoint and work with authorities to quickly help recover it. On many models, an Advisor can send a signal to slow the vehicle or prevent it from restarting.

TURN-BY-TURN NAVIGATION Getting directions is as easy as pushing a button and telling an Advisor where you want to go. Directions are quickly downloaded to your car, and a voice calls out every turn. An Advisor can also help you with a database of more than 14 million points of interest. To plan routes in advance, you can send directions to your vehicle through mapquest.com, an Advisor or the RemoteLink mobile app.

ONSTAR WITH 4G LTE CONNECTION³ With powerful 4G LTE connectivity built right into your vehicle, you have your very own mobile command center that provides faster service delivery and lets you stay connected on the go.

ONSTAR REMOTELINK® MOBILE APP³ You can remotely start your vehicle, locate your vehicle on a map, lock or unlock your doors, honk your horn and flash your lights. You can also send directions to your vehicle through your smartphone.

REMOTE SERVICES A simple call to an OnStar Advisor can send a signal to unlock your doors or honk the horn and flash the lights. It's technology hard at work to get you back on the road.

HANDS-FREE CALLING³ Your vehicle has built-in Hands-Free Calling to help keep you safely connected when your cell phone isn't available. Choose from minute bundles or a minutes-per-month plan.

ATYOURSERVICE⁸ Life just got easier and more affordable with the personalized connection of AtYourService. Our trusted Advisors can deliver offers for everyday savings from restaurants and retailers on your route, help you locate hotels and even book your room.

ONSTAR VEHICLE DIAGNOSTICS As part of the Basic Plan, every month, your vehicle runs a thorough check of your engine, transmission, antilock brakes and more, and e-mails you the results.

DEALER MAINTENANCE NOTIFICATION Is it time for a tire rotation? An oil change? Or a new air filter? You'll always know because your car can e-mail your Vehicle Diagnostics report to the dealer when it's time, and the dealer will contact you to set up a service appointment.

¹Covers only scheduled oil changes with filter, tire rotations and 27-point inspections, according to your new vehicle's recommended scheduled maintenance, for up to 2 years or 24,000 miles, whichever comes first. Does not include air filters. Maximum of two service events. See participating dealer for other restrictions and complete details. ²Whichever comes first. See dealer for limited warranty details. ³Visit onstar.com for coverage map, details and system limitations. Services vary by model and conditions. OnStar acts as a link to existing emergency service providers. Not all vehicles may transmit all crash data. Mobile app available on select iOS, Android,™ BlackBerry® and Windows® devices. Services vary by device, vehicle and conditions. The OnStar Vehicle Locate Service can locate OnStar-equipped vehicles, not people. Requires an active OnStar subscription. OnStar Hands-Free Calling requires an existing OnStar service contract and available minutes. Not available in certain markets. Visit onstar.com for coverage map, details and system limitations. Available 4G LTE Wi-Fi requires compatible mobile device, active OnStar subscription and data plan. Plus tax. Credit card payment required for monthly subscriptions. ⁴Devices must be WPA2-compliant with active OnStar service and data plan. Wi-Fi devices manufactured prior to 2006 may not be compatible. Please consult your device manufacturer for information regarding the WPA2 security protocol and Wi-Fi device compatibility. Vehicle must be started or in accessory mode to access Wi-Fi. Visit onstar.com for details and system limitations. ⁵The OnStar Basic Plan is available for 5 years from the date of delivery of eligible 2015 model year and newer vehicles and is transferable, including Vehicle Diagnostics, Dealer Maintenance Notification and access to limited OnStar RemoteLink mobile app features. The OnStar Basic Plan does not include emergency, security or navigation services. These and other services are available under a paid plan. Visit onstar.com for vehicle availability, coverage map, details and system limitations. Requires factory-installed remote start. Available 4G LTE Wi-Fi requires compatible mobile device, active OnStar subscription and data plan. Requires factory-equipped vehicle navigation screen. Ability to send a destination to a vehicle's navigation screen through a smartphone is only available on 2015 model year and newer. Currently available to OnStar Guidance Plan subscribers in the U.S. only. ⁶Roadside service provided by Allstate Roadside Services. ⁷Services vary by model and conditions. Visit onstar.com for vehicle availability, details and system limitations. ⁸Third-party trademarks are the property of their respective third-party owners, used under agreement.

ACCENTS



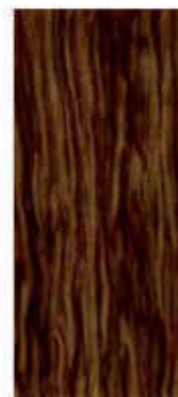
Axiom Aluminum



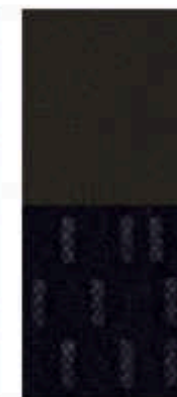
Burnish Aluminum



Agathis Wood Tone

Smoked Mahogany
Wood TonePeriwood Mahogany
Wood and Wood Tones

INTERIOR COLORS AND SEATING SURFACES

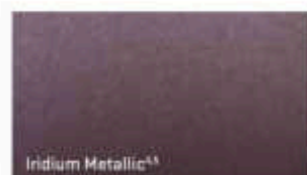
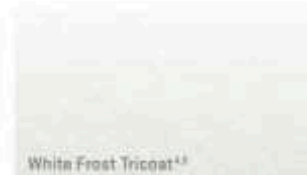
Dark Titanium/
Light Titanium
Premium ClothEbony/Ebony
Premium Cloth

MODELS

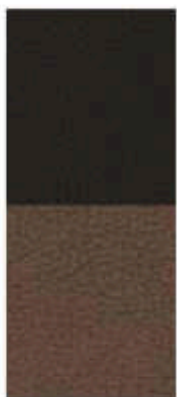
SL	-	-	-	-	-	-	●
SLE	-	-	-	-	-	●	●
SLT	●	-	●	●	-	-	-
DENALI	-	●	-	-	●	-	-

KEY ● STANDARD ○ AVAILABLE - NOT AVAILABLE *Not available with eight-passenger seating. **Included with Ebony and Light Titanium seating colors. ***Included with the Dark Cashmere seating color.

EXTERIOR COLORS

Midnight Amethyst Metallic^{4,5}Sparkling Silver Metallic^{4,5}Quicksilver Metallic^{4,5}Ebony Twilight Metallic^{4,5}Crimson Red Tintcoat^{4,5}Dark Sapphire Blue Metallic^{4,5,6}Indium Metallic^{4,5}White Frost Tricoat^{4,5}Summit White⁶

All colors are basecoat/clearcoat for high-gloss and durable finish. See dealer for more details. ⁴Extra-cost color. ⁵Not available on SL. ⁶Not available on Denali.



Ebony/Dark Cashmere
Leather-Appointed¹



Dark Titanium/
Light Titanium
Leather-Appointed



Ebony/Ebony
Leather-Appointed



Ebony/Dark Cashmere
Perforated
Leather-Appointed¹



Dark Titanium/Light
Titanium Perforated
Leather-Appointed



Ebony/Ebony
Perforated
Leather-Appointed



Cocoa/Dune
Perforated
Leather-Appointed¹



Ebony/Ebony
Perforated
Leather-Appointed

-

-

-

-

-

-

-

-

-

-

-

-

-

-

-

-

•

•

•

○

○

○

-

-

-

-

-

-

-

-

•

•

WHEELS



RSZ 18" ALUMINUM
STANDARD ON SL AND SLE



RZA 18" ALUMINUM
STANDARD ON SLT



PEP 20" MACHINED ALUMINUM
STANDARD ON DENALI



PFE 20" CHROME-CLAD ALUMINUM
AVAILABLE ON DENALI



ROOF RACK CROSS RAIL PACKAGE Carry up to a 200-lb¹ load on the roof of your Acadia.

ASSIST STEPS They make it easier to get into and out of your Acadia. Constructed of high-strength aluminum, these 6" chrome steps are topped with full-length black traction pads.

DUAL-SCREEN REAR-SEAT ENTERTAINMENT SYSTEM Rear-seat passengers will enjoy dual LCD screens and a DVD player built into the back of the front-seat head restraints. Includes wireless headphones and a remote control.

SIDE-WINDOW WEATHER DEFLECTORS Let fresh air in and keep rain, sleet and snow out. Available in Smoke.

INTEGRATED CARGO LINER To protect the back of the third-row seats when they're folded flat, this new cargo-area liner attaches to the seatback and folds with the seat. And to save time and effort, you don't have to remove it to carry passengers.

CARGO SHADE Keep the cargo area hidden with this Ebony fabric cargo shade. It easily attaches and folds or rolls for easy storage.

CARGO NET Enhance the efficiency of your Acadia with this black cargo net. It attaches easily to the sides of your cargo area to secure small, light items while in transit.

CARGO ORGANIZER This durable, flexible, collapsible organizer has multiple compartments, allowing you to carry lightweight items of various sizes. Can be folded flat and is black with GMC logo.

PREMIUM ALL-WEATHER FLOOR MATS Fitted to the floor configuration with a deep-ribbed pattern to collect debris. Nibs on the back keep them in place. Available in Ebony, Light Titanium and Dune to match your interior.

YOURS SHOULD BE ONE OF A KIND.

GMC Accessories are designed so you can personalize your Acadia to fit your style as well as your needs. They're also engineered and tested to meet Professional Grade standards.

¹Cargo and load capacity limited by weight and distribution.

TRIM LEVELS

SL
SLE-1
SLE-2
SLT-1
SLT-2
DENALI

MECHANICAL

DISC BRAKES 4-wheel antilock, 4-wheel disc	●	●	●	●	●	●
DRIVETRAIN Front-wheel drive	●	●	●	●	●	●
All-wheel drive	—	○	○	○	○	○
ENGINE 3.6L direct-injection V-6 VVT; 281 hp and 266 lb-ft of torque (268 hp and 270 lb-ft of torque on Denali)	●	●	●	●	●	●
ENGINE BLOCK HEATER	○	○	○	○	○	○
ENGINE OIL LIFE MONITOR	●	●	●	●	●	●
EXHAUST Single with downturned outlet	●	●	●	●	●	—
Dual with flow-through fascia design	—	—	—	—	—	●
STABILITRAK Stability control system and traction control	●	●	●	●	●	●
STEERING Power	●	●	●	—	—	—
Variable effort	—	—	—	●	●	●
SUSPENSION Front and rear independent	●	●	●	●	●	●
TRAILERING EQUIPMENT Includes heavy-duty coating and factory-installed trailer hitch	○	○	○	○	○	●
TRANSMISSION 6-speed automatic electronically controlled with overdrive	●	●	●	●	●	●

SEATING

SEAT TRIM Premium Cloth	●	●	●	—	—	—
Leather-appointed, first and second rows	—	—	—	●	●	—
Perforated leather-appointed seating, first and second rows	—	—	—	○	●	—
SEATS 4-way driver (includes lumbar control) and 2-way front-passenger buckets, manual adjustment	●	●	●	—	—	—
8-way power driver with power recline and lumbar control. Includes 2-way power front-passenger seat with manual recline and lumbar control on SLE-2 models.	—	—	●	●	●	—
8-way power driver with power recline and lumbar control, 2-position memory for driver's seat and outside rearview mirrors. On SLT-1 included and only available with Side Blind Zone Alert and Rear Cross Traffic Alert.	—	—	—	○	●	●
8-way power front-passenger seat	—	—	—	●	●	●
Heated front seats	—	—	○	●	●	—
Heated and cooled front seats. Includes with perforated leather-appointed seating surfaces.	—	—	—	—	○	●
60/40 split-folding 3-passenger third-row bench	●	●	●	●	●	●
8-passenger seating (2-3-3 configuration). Includes second-row 60/40 split flat-folding bench seat with Smart Slide. See interior color section for color availability details.	●	●	○	○	○	○
7-passenger seating (2-2-3 configuration). Includes second-row flat-folding captain's chairs with Smart Slide.	—	—	●	●	●	●

INSTRUMENTATION AND CONTROLS

ELECTRONIC CRUISE CONTROL	●	●	●	●	●	●
HEAD-UP DISPLAY Includes digital multifunction readouts. Requires Technology Package on SLT-2.	—	—	—	—	○	—
INSTRUMENTATION 6-gauge, outside temperature indicator and Driver Information Center	●	●	●	●	●	●
Enhanced Driver Information Center includes outside temperature indicator, trip odometer, oil life, average speed, distance and time to go, average fuel used, tire pressure monitor and Help menu.	●	●	●	●	●	●
DIGITAL COMPASS DISPLAY	—	●	●	●	●	●
REAR VISION CAMERA SYSTEM With dynamic grid lines	●	●	●	●	●	●
STEERING WHEEL Tilt-wheel and telescopic	●	●	●	●	●	—
Power tilt and telescopic	—	—	—	—	—	●
Leather-wrapped with redundant audio controls	●	●	●	—	—	—
Heated leather-wrapped with audio controls. Includes Periwinkle Mahogany Wood trim on Denali models.	—	—	—	—	—	●
ULTRASONIC REAR PARKING ASSIST	●	●	●	●	●	●

KEY ● STANDARD ○ AVAILABLE — NOT AVAILABLE

TRIM LEVELS

SL
SLE-1
SLE-2
SLT-1
SLT-2
DENALI

INTERIOR DETAILS

CARGO STORAGE Under rear floor	●	●	●	●	●	●
CLIMATE CONTROL Air conditioning, single-zone manual	●	●	●	—	—	—
Tri-zone air conditioning with individual climate settings for driver and front passenger and second-/third-row controls	—	—	—	●	●	●
CONSOLES Overhead console with map lights. On SLT-1, SLT-2 and Denali models, includes Universal Home Remote.	●	●	●	●	●	●
Front center console with storage	●	●	●	●	●	●
CUPHOLDERS 10 (12 with 8-passenger seating)	●	●	●	●	●	●
DEFOGGER Rear window electric	●	●	●	●	●	●
FLOOR MATS Color-keyed, carpeted for all 3 rows, removable	●	●	●	●	●	—
Premium, Denali-specific, carpeted for all 3 rows	—	—	—	—	—	●
INSULATION Acoustical package	●	●	●	●	●	—
Premium acoustical package	—	—	—	—	—	●
LIGHTING Interior ambient light in instrument panel	●	●	●	●	●	●
MIRRORS Inside rearview, manual	●	●	—	—	—	—
Inside rearview, auto-dimming	—	—	—	—	—	●
OPEN ROAD PACKAGE Includes Color Touch Navigation [†] with IntelliLink, [‡] Dual SkyScape sunroof, Forward Collision Alert, Lane Departure Warning and Trailering Equipment	—	—	—	○	—	—
POWER DOOR LOCKS With lockout protection	●	●	●	●	●	●
POWER OUTLET 3-prong, 120-volt, household-style. Included and only available with Rear-Seat Entertainment System.	—	—	—	○	○	○
POWER WINDOWS With driver express-down	●	●	●	●	—	—
With driver express-up and -down and passenger express-down. On SLT-1, included and only available with Side Blind Zone Alert and Rear Cross Traffic Alert.	—	—	—	○	●	●
REMOTE KEYLESS ENTRY Programmable with 2 transmitters, panic button and extended range	●	●	●	●	●	●
REMOTE VEHICLE START	—	—	—	—	—	●
SILL PLATE Illuminated, front	—	—	—	—	—	●
SUNROOF 2-panel Dual SkyScape. Tilt-sliding, front and fixed rear with sunscreen.	—	—	○	○	○	●
TECHNOLOGY PACKAGE Includes Head-Up Display, cargo-area audio system controls and High-Intensity Discharge projector low-beam headlamps. Requires Forward Collision Alert and Lane Departure Warning on SLT-2 trim.	—	—	—	—	○	●
UNIVERSAL HOME REMOTE 3-channel programmable. Includes garage-door opener.	—	—	—	—	●	●

ENTERTAINMENT/COMMUNICATION/NAVIGATION

COLOR TOUCH RADIO AM/FM capable with CD player, 6.5" diagonal touch-screen display, USB port [†] and auxiliary input jack	●	●	—	—	—	—
COLOR TOUCH RADIO AM/FM capable with CD player, IntelliLink, [‡] 6.5" diagonal touch-screen display, USB port [†] and auxiliary input jack	—	—	●	●	●	—
COLOR TOUCH NAVIGATION AM/FM capable with CD player, IntelliLink, [‡] 6.5" diagonal touch-screen display, USB port [†] and auxiliary input jack	—	—	—	○	○	●
REAR-SEAT ENTERTAINMENT SYSTEM Includes DVD player with remote control, overhead display, 2 sets of 2-channel wireless infrared headphones, auxiliary audio/video input jacks, 3-prong household-style power outlet and 10-speaker Bose [®] sound system supporting discrete 5.1 recorded material	—	—	—	○	○	○
REAR-SEAT USB PORTS [†] Dual charge-only. Located rear of center console.	●	●	●	●	●	●

[†]Map coverage available in the United States, U.S. Virgin Islands, Puerto Rico and Canada. [‡]Full functionality requires compatible Bluetooth[®] and smartphone. Some devices require USB connectivity. ^{††}Not compatible with all devices.

TRIM LEVELS

SL
SLE-1
SLE-2
SLT-1
SLT-2
DENALI

ENTERTAINMENT/COMMUNICATION/NAVIGATION, continued

AUDIO 6-speaker system	●	●	●	-	-	-
10-speaker Bose premium sound system with subwoofer	-	-	-	●	●	●
With 5.1 Surround Sound. Requires Rear-Seat Entertainment System.	-	-	-	○	○	○
Audio controls located in cargo area. Requires Technology Package on SLT-2.	-	-	-	-	○	●
SIRIUSXM SATELLITE RADIO ¹ Including 3 trial months of service	-	●	●	●	●	●
NAVTRAFIC ² Includes 3 trial months of service and only available with Color Touch Navigation ³	-	-	-	○	○	●
BLUETOOTH ⁴ For phone, personal cell-phone connectivity to vehicle audio system	●	●	●	●	●	●
ONSTAR ⁵ 5-year Basic Plan and 6 months of Guidance Plan	●	●	●	●	●	●
ONSTAR 4G LTE ⁶ Includes Wi-Fi ⁷ hotspot capability (with 3-month/3GB trial, whichever comes first)	●	●	●	●	●	●

EXTERIOR STYLING AND FUNCTIONALITY

DOOR HANDLES Chrome. On SLE models. Includes black beltline molding, on SLT-1, SLT-2 and Denali models, includes bright beltline molding.	●	●	●	●	●	●
FASCIAS Front and rear body-color. Denali-specific	-	-	-	-	-	●
GLASS Privacy Solar-Ray except windshield and driver- and front-passenger-side glass	-	-	-	-	-	●
GRILLE Signature Denali	-	-	-	-	-	●
LIGHTS Dual halogen projector-beam headlamps	●	●	●	●	●	●
High-Intensity Discharge low-beam headlamps, with halogen projector high beams. Requires Technology Package on SLT-2.	-	-	-	-	-	○
Daytime running lamps, LED	●	●	●	●	●	●
Front halogen fog lamps	-	-	-	-	-	●
MOLDINGS Body-color bodyside	●	●	●	●	●	-
Denali-specific, body-color bodyside with chrome insert and rocker molding	-	-	-	-	-	●
OUTSIDE MIRRORS Power-adjustable, manual-folding, black	●	●	●	-	-	-
Heated, power-adjustable, manual-folding with integrated turn-signal indicators and driver-side memory, body-color	-	-	-	●	-	-
Heated, power-adjustable, power-folding and driver-side auto-dimming, with integrated turn-signal indicators and driver-side memory, body-color. On SLT-1, included and only available with Side Blind Zone Alert and Rear Cross Traffic Alert.	-	-	-	○	●	●
PREMIUM EDITION PACKAGE includes 20" machined aluminum wheels (PEP) and Open Road Package.	-	-	-	○	-	-
REAR LIFTGATE Manual	●	●	-	-	-	-
Power	-	-	●	●	●	●
WIPERS Front and rear intermittent with washers.	●	●	●	●	●	●
ROOF RAILS	●	●	●	●	●	-
Bright, Denali-specific	-	-	-	-	-	●

SAFETY AND SECURITY

AIR BAGS ⁸ Includes driver and front-passenger frontal air bags with Passenger Sensing System, front-row side-impact air bags and head curtain side-impact air bags with rollover protection in all 3 rows	●	●	●	●	●	●
Driver inboard seat-mounted front center side-impact air bag	-	-	●	●	●	●
FORWARD COLLISION ALERT AND LANE DEPARTURE WARNING	-	-	-	○	○	○
SIDE BLIND ZONE ALERT AND REAR CROSS TRAFFIC ALERT (On SLT-1, includes power windows with driver express-up and -down and passenger express-down, 2-position driver-seat memory and heated, power-adjustable, power-folding and driver-side auto-dimming, body-color outside rearview mirrors with integrated turn-signal indicators and memory	-	-	-	○	○	●
TIRE PRESSURE MONITORING SYSTEM Does not monitor spare tire	●	●	●	●	●	●
VEHICLE THEFT-DETERRENT SYSTEM With PASS-Key III and engine immobilizer	●	●	●	●	●	●

KEY ● STANDARD ○ AVAILABLE - NOT AVAILABLE

STANDARD TECHNICAL DATA

3.6L V-6 VVT DI ENGINE	
Bore and stroke (mm)	94.0 x 85.6
Horsepower @ rpm	281 @ 5300 (288 on Denali)
Torque @ rpm (lb-ft)	266 @ 3400 (270 on Denali)
Compression ratio	11.3:1
Valvetrain	Dual-overhead cam with 4 valves per cylinder
Fuel delivery	Spark-ignited direct fuel injection
TRANSMISSION	6-speed automatic Hydra-Matic 6T75
STANDARD FRONT-WHEEL DRIVE (FWD)	
AVAILABLE ALL-WHEEL DRIVE (AWD)	Active Intelligent AWD
BRAKES	4-wheel disc with antilock braking system
STEERING	Hydraulic rack-and-pinion system
BATTERY	880 cold-cranking amps
ALTERNATOR	170 amps
FUEL TANK CAPACITY	22.0 gallons (approx.)
EPA-ESTIMATED MILEAGE	
FWD	17 city/24 hwy
AWD	16 city/23 hwy
TRAILERING DATA	
FWD/AWD	Axis ratio: 3:1E, Maximum Trailer Weight: ⁹ 5200 lbs
GROSS VEHICLE WEIGHT RATING¹⁰ (GVWR) (LBS)	
FWD/AWD	6411/6458
EXTERIOR DIMENSIONS (IN)	
Overall Height	72.6 with roof rails
Overall Width	78.9
Overall Length	200.6
Wheelbase	118.9
INTERIOR DIMENSIONS	
Head Room	Front 40.3/Rear 39.5/38.4 in
Leg Room	Front 41.3/Rear (max) 36.8/33.2 in
Shoulder Room	Front 51.8/Rear 51.0/51.8 in
Hip Room	Front 58.0/Rear 57.0/48.3 in
Interior Volume	171.3 cu. ft.
CARGO AREA DIMENSIONS (CU. FT.)¹¹	
Second and third rows folded	116.1
Second row up/third row folded	70.3
Behind third row	24.1

¹If you subscribe after your trial period, subscriptions are continuous until you call SiriusXM to cancel. See SiriusXM Customer Agreement for complete terms at siriusxm.com. Other fees and taxes will apply. All fees and programming subject to change. For more information about NavTraffic, visit siriusxm.com/navtraffic. XM satellite service is available only to those in the 48 contiguous USA and D.C. ²Map coverage available in the United States, U.S. Virgin Islands, Puerto Rico and Canada. ³Go to my.gmc.com/learn to find out which phones are compatible with the vehicle. ⁴Visit onstar.com for details and system limitations. ⁵Devices must be WPA2-compliant with active OnStar service and data plan. Wi-Fi devices manufactured prior to 2006 may not be compatible. Please consult your device manufacturer for information regarding the WPA2 security protocol and Wi-Fi device compatibility. Vehicle must be started or in accessory mode to access Wi-Fi. Visit onstar.com for details and system limitations. ⁶A NOTE ON CHILD SAFETY: Always use safety belts and the correct child restraint for your child's age and size, even with air bags. Even in vehicles equipped with the Passenger Sensing System, children are safer when properly secured in a rear seat in the appropriate infant, child or booster seat. Never place a rear-facing infant restraint in the front seat of any vehicle equipped with an active frontal air bag. See your vehicle Owner's Manual and child safety seat instructions for more safety information. ⁷Before you buy a vehicle or use it for trailering, carefully review the trailering section of the Owner's Manual. The weight of passengers, cargo and options or accessories may reduce the amount you can tow. ⁸When properly equipped, includes weight of vehicle, passengers, cargo and equipment. ⁹Cargo and load capacity limited by weight and distribution.

IMPORTANT WORDS

PRO GRADE PROTECTION

For 2016, Acadia comes with the Pro Grade Protection Plan, which includes two maintenance visits,¹ 3-year/36,000-mile bumper-to-bumper limited warranty² and 5-year/60,000-mile powertrain limited warranty.³ Roadside Assistance and Courtesy Transportation.

Starting with the owner orientation—and full tank of gas—you receive when you take possession of your Acadia to the **24-Hour Roadside Assistance, Courtesy Transportation and Travel Benefits**, you receive a portfolio of owner privileges that lasts throughout your warranty. For expert product information, Roadside Assistance or other services, call 1-800-GMC-8782.

TRAVEL BENEFITS AND ROADSIDE ASSISTANCE Available around the clock: trip routing service, a program for reimbursement for trip interruption due to necessary warranty repairs, towing, flat tire change, jump-starts and more for 5 years or 60,000 miles (whichever comes first).

COURTESY TRANSPORTATION Available at participating dealers: shuttle service, reimbursement of certain public transportation or fuel expenses for overnight warranty repairs and courtesy rental for overnight work repairs. See your dealer for details.

GMC OWNER CENTER A complimentary, one-stop resource to enhance your GMC ownership experience. It's easy to sign up. Just go to gm.com/gmownercenter/gmc.

ONSTAR



Your Acadia includes the OnStar Guidance Plan (trial does not include Hands-Free Calling minutes) for 6 months. OnStar services require vehicle electrical system (including battery), wireless service and GPS satellite signals to be available and operating for features to function properly. OnStar service required. OnStar acts as a link to existing emergency service providers. Not all vehicles may transmit all crash data. Visit onstar.com for coverage maps, details and system limitations. Services vary by model and conditions.

SIRIUSXM SATELLITE RADIO



SiriusXM Satellite Radio[®] is standard on most Acadia models. It includes 3 trial months of service. SiriusXM Satellite Radio makes your drive come alive with commercial-free music channels from virtually every genre, artist-dedicated channels, live performances and more. Tune in to live play-by-play from the biggest sports, exclusive entertainment from top personalities, compelling talk, hilarious comedy, world-class news, local traffic and weather and family-friendly programming. Welcome to the world of satellite radio. Visit siriusxm.com for details.

GMC CERTIFIED SERVICE

GMC Certified Service To help your Acadia live up to its performance promise, GMC Certified Service—found exclusively at your GMC dealer—is there. With all the engineering excellence in Acadia, GM-trained technicians have the expertise to care for all of it.

ADDITIONAL NOTES

A NOTE ON CHILD SAFETY Always use safety belts and the correct child restraint for your child's age and size, even with air bags. Even in vehicles equipped with the Passenger Sensing System, children are safer when properly secured in a rear seat in the appropriate infant, child or booster seat. Never place a rear-facing infant restraint in the front seat of any vehicle equipped with an active frontal air bag. See your vehicle Owner's Manual and child safety seat instructions for more safety information.

TRAILERING AND OFF-ROAD INFORMATION Please carefully review the Owner's Manual for important safety information about trailering or off-road driving in your vehicle.

FLEET ORDERS Some standard content may be deleted with fleet orders. See dealer for details.

ENGINES GMC products are equipped with engines produced by GM Powertrain or other suppliers to GM worldwide. The engines in GMC products may also be used in other GM makes and models.

GMC.COM See more of Acadia on our Web site: gmc.com/acadia. More photos and information; hot links to related subjects; convenient dealer locator; pricing guide. Spec out your own vehicle. Or call 1-800-GMC-8782.

BUYPOWER CARD[™]



Learn more at gmcbuypowercard.com/catalogs. YOUR CARD IS THE KEY.[™]

Now it's even easier to get into the GMC of your dreams. Every purchase gives you Earnings redeemable toward part or even all of a new GMC, Chevrolet, Buick or Cadillac. Every year, enjoy 5 percent Earnings on your first \$5,000 in purchases and 2 percent unlimited Earnings after that. No expiration on Earnings and no limit on how much you can earn or redeem.

IMPORTANT WORDS ABOUT THIS CATALOG We have tried to make this catalog comprehensive and factual. We reserve the right, however, to make changes at any time, without notice, in prices, colors, materials, equipment, specifications, models and availability. Specifications, dimensions, measurements, ratings and other numbers in this catalog and other printed materials provided at the dealership or affixed to vehicles are approximates based upon design and engineering drawings and prototypes and laboratory tests. Your vehicle may differ due to variations in manufacture and equipment. Since some information may have been updated since the time of printing, please check with your GMC dealer for complete details. GMC reserves the right to lengthen or shorten the model year for any product for any reason, or to start and end model years at different times. All competitive claims are based on the latest information available at the time of printing and GM Mid Utility segment.

AN IMPORTANT NOTE ABOUT ALTERATIONS AND WARRANTIES Installations or alterations to the original equipment vehicle (or chassis) as distributed by General Motors are not covered by the General Motors New-Vehicle Limited Warranty. The special body company, assembler, equipment installer or upfitter is solely responsible for warranties on the body or equipment and any alterations (or any effect of the alterations) to any of the parts, components, systems or assemblies installed by GM. General Motors is not responsible for the safety or quality of design features, materials or workmanship of any alterations by such suppliers.

NEW-VEHICLE LIMITED WARRANTY All GMC light-duty vehicles come with a fully transferable, no-deductible 5-year/60,000-mile (whichever comes first) Powertrain Limited Warranty. GM vehicles registered in the USA are also covered for 3 years or 36,000 miles (whichever comes first). Coverage includes tires and towing to your nearest GMC dealership. Repairs will be made to correct any vehicle defect and most warranty repairs will be made at no charge. In addition, rust-through corrosion will be covered for 6 years or 100,000 miles (whichever comes first). Acadia also comes with two maintenance visits within the first 2 years/24,000 miles (whichever comes first).¹ See dealer for details.

ASSEMBLY GMC vehicles and their components are assembled or produced by different operating units of General Motors, its subsidiaries or suppliers to GM worldwide. We sometimes find it necessary to produce GMC vehicles with different or differently sourced components than originally scheduled. Since some options may be unavailable when your vehicle is assembled, we suggest that you verify that your vehicle includes the equipment you ordered or, if there are changes, that they are acceptable to you.

GMMOBILITY.COM (1-800-323-8935) GM Mobility offers financial assistance for eligible adaptive equipment to make automotive travel easier for persons with disabilities or special transportation needs. To learn more about special GM Mobility offers, visit gmmobility.com.

¹Covers only scheduled oil changes with filter, tire rotations and 27-point inspections, according to your new vehicle's recommended maintenance schedule, for up to 2 years or 24,000 miles, whichever comes first. Does not include air filters. Maximum of two service events. See participating dealers for other restrictions and complete details. ²Whichever comes first. See dealer for limited warranty details. ³If you subscribe after your trial period, subscriptions are continuous until you call SiriusXM to cancel. See SiriusXM Customer Agreement for complete terms at siriusxm.com. Other fees and taxes will apply. All fees and programming subject to change. For more information about NavTraffic, visit siriusxm.com/navtraffic. XM satellite service is available only to those in the 48 contiguous USA and D.C.

©2015 General Motors. All rights reserved. GM, the GM logo, GMC, the slogans, emblems, vehicle model names, vehicle body designs and other marks appearing in this catalog are the trademarks and/or service marks of General Motors, its subsidiaries, affiliates or licensors. Facebook is a registered trademark of Facebook, Inc. Twitter is a registered trademark of Twitter, Inc. YouTube is a registered trademark of Google, Inc. Sirius, XM and all related marks and logos are trademarks of SiriusXM Radio, Inc.



FACEBOOK.COM/GMC



TWITTER.COM/THISISGMC



YOUTUBE.COM/GMC

VISIT US AT GMC.COM