

**LIVE  
LIKE A PRO**

2020  
**GMC CANYON**



**GMC**  
WE ARE PROFESSIONAL GRADE

20GMCCANRC-25

**LIVE  
LIKE A PRO**



As a pro, now is always the right time to take on a new challenge. And Canyon is always game for adventure. From carving the slalom course of the city to devouring the rockiest of off-road trails, Canyon delivers the efficiency, maneuverability and premium comfort you want.

Experience the midsize truck for you—the 2020 GMC Canyon.

As always, always wear your seat belt.

**WHEN YOU CARRY THE BOLDEST  
NAME IN TRUCKS, YOU WEAR IT  
LIKE A BADGE**

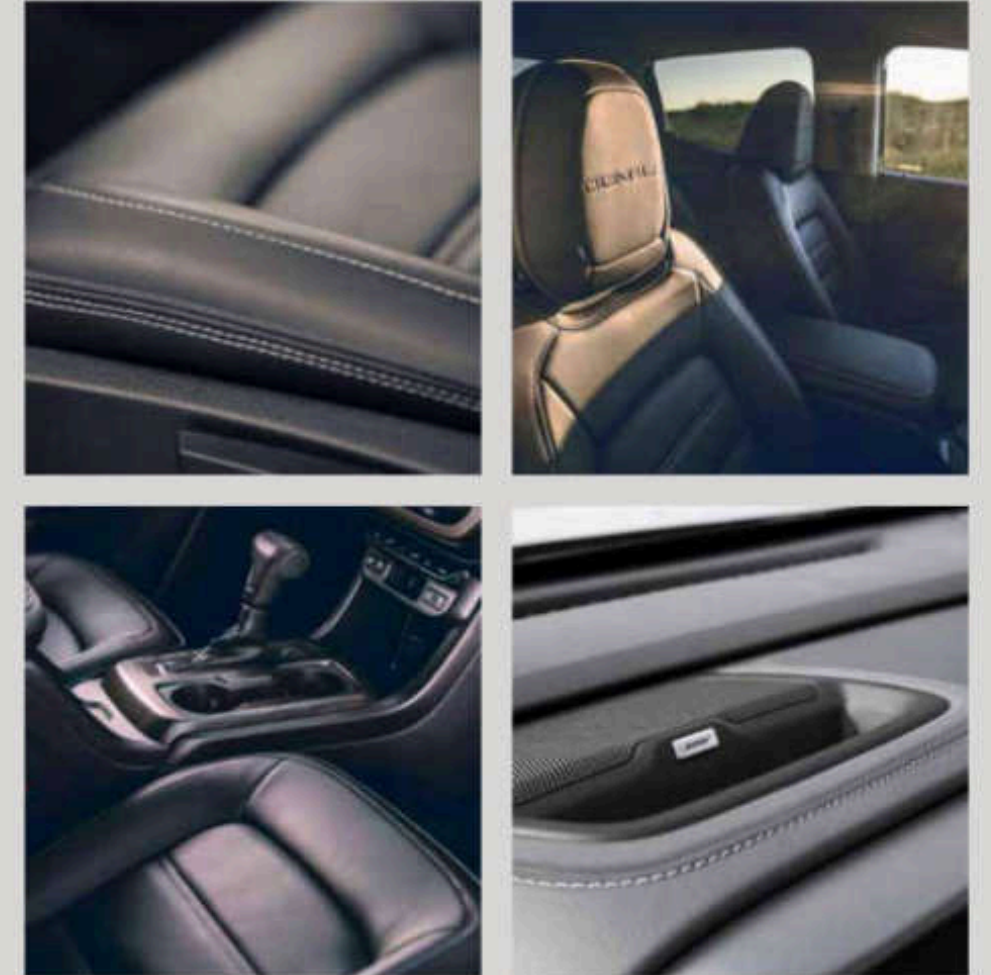
# DENALI

- | 20" DIAMOND-CUT MACHINED ALUMINUM WHEELS WITH PAINTED ACCENTS
- | 5" CHROME ASSIST STEPS
- | SPRAY-ON BEDLINER WITH DENALI LOGO
- | EXCLUSIVE CHROME FOG LAMP ACCENTS
- | POLISHED EXHAUST TIP ON V6 MODELS
- | REAR PARK ASSIST<sup>1</sup>

<sup>1</sup>Read the vehicle Owner's Manual for important feature limitations and information.



# INVITATION TO EXPLORE

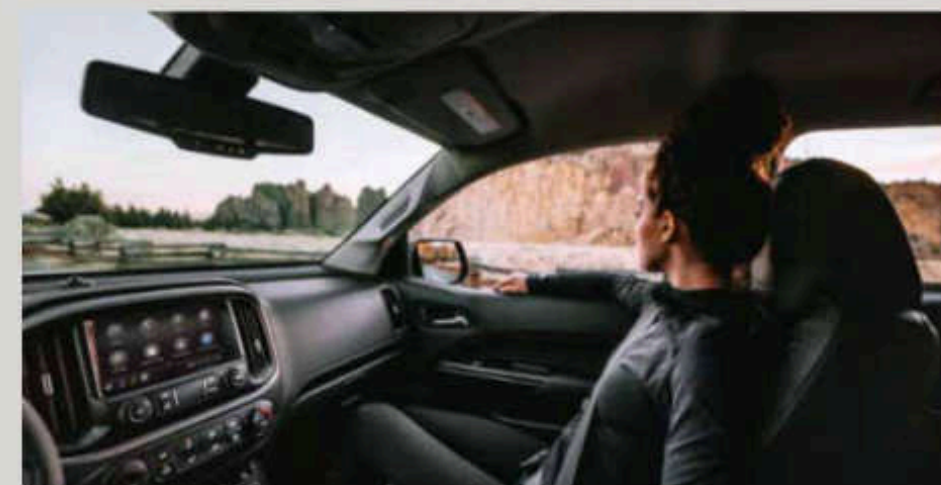


In Canyon Denali, you'll find premium materials everywhere you look and feel: from embroidered Denali front head restraints to supportive heated and ventilated leather-appointed front seats with unique contrasting stitching. And because it's a Denali, you'll also find burnished aluminum trim and a hand-stitched, heated leather-wrapped steering wheel.



ALL TERRAIN

## TAKE THE OFF-ROAD LESS TRAVELED



- AUTOMATIC LOCKING REAR DIFFERENTIAL
- OFF-ROAD SUSPENSION
- HILL DESCENT CONTROL
- DRIVER ALERT PACKAGE\* IS AVAILABLE (LATE AVAILABILITY)

Even before venturing off the beaten (and often unpaved) path in your Canyon All Terrain, its rugged yet refined styling signals it's up to the journey.

It starts with an All Terrain black grille, body-color bumpers and grille surround and continues with unique 17" Dark Argent metallic cast-aluminum wheels and all-terrain blackwall tires.

Its supportive, purposefully crafted interior features exclusive contrasting red stitching, distinctive All Terrain seating, special dark aluminum trim and carbon-fiber-inspired interior accents.

\*Read the vehicle Owner's Manual for important feature limitations and information.

**FOR EVEN MORE ADVENTUROUS  
OFF-ROADING, X MARKS THE SPOT**



■ 31" GOODYEAR® WRANGLER DURATRAC® TIRES

■ BLACK 3" ROUND STEP BARS

■ SPRAY-ON BEDLINER

■ ALL-WEATHER FLOOR LINERS

To help you conquer more challenging environments with confidence, Canyon offers the available All Terrain X Package. It starts with the Canyon All Terrain—with features such as a transfer case shield, automatic locking rear differential and Hill Descent Control—and adds equipment made to take on the terrain wherever you're headed.



**ALL TERRAIN X**

# DURAMAX TURBO DIESEL



## 30 MPG HIGHWAY<sup>1</sup>

<sup>1</sup>EPA-estimated mpg: 20 city/30 hwy (2WD); 19 city/28 hwy (4WD) with the available 2.8L Duramax Turbo Diesel engine. <sup>2</sup>Canyon's 7,700-lb rating requires the 2WD Crew Cab model. Before you buy a vehicle or use it for trailering, carefully review the trailering section of the Owner's Manual. The weight of passengers, cargo and options or accessories may reduce the amount you can tow.



**SOME THINGS ARE MORE POWERFUL WHEN THEY WORK TOGETHER**

Canyon offers the available Duramax 2.8L I4 Turbo Diesel engine with exceptional fuel efficiency of up to 20 mpg city/30 mpg highway (19 mpg city/28 mpg highway<sup>1</sup> as shown). Canyon is strong enough to trailer up to 7,700 lbs<sup>2</sup> (7,600 lbs on 4WD model shown) when equipped with the Duramax 2.8L I4 Turbo Diesel and the available Trailering Package. It trailers up to 7,000 lbs<sup>2</sup> with the available V6 engine and Trailering Package. The gas I4 and V6 models can trailer up to 3,500 lbs<sup>2</sup> with a bumper-mounted ball hitch.

Learn more about Canyon's powertrain technologies at [gmc.com](http://gmc.com).

**LOAD IT UP**



**WE DID**



- ROLL-FORMED HIGH-STRENGTH STEEL CARGO BED
- CORNERSTEP REAR BUMPER AND HAND ASSISTS
- RAIL PROTECTORS
- TWO-TIER LOADING
- MOVABLE ACCESSORY UPPER TIE-DOWNS ARE AVAILABLE
- SPRAY-ON BEDLINER IS AVAILABLE
- EZ-LIFT AND LOWER TAILGATE IS AVAILABLE
- REMOTE LOCKING TAILGATE IS AVAILABLE

We engineered the cargo bed to do more than just carry your gear. These innovations help you easily get into the bed, as well as organize and secure cargo. In addition, Canyon's large cargo bed is designed to deliver exceptional payload capability.

CANYON OFFERS:

- REAR PARK ASSIST
- FORWARD COLLISION ALERT
- LANE DEPARTURE WARNING
- HIGH DEFINITION REAR VISION CAMERA
- ONSTAR® SAFETY & SECURITY PLAN\* IS AVAILABLE

# BECAUSE IT'S A JUNGLE OUT THERE

Canyon's available collision-avoidance and security technologies are engineered to help enhance your awareness of the road and surrounding vehicles. Additional peace of mind is provided by six standard airbags.<sup>2</sup>

\*OnStar plan, working electrical system, cell reception and GPS signal required. OnStar links to emergency services. See onstar.com for details and limitations. \*\*A NOTE ON CHILD SAFETY: Always use seat belts and the correct child restraint for your child's age and size, even with airbags. Even in vehicles equipped with the Passenger Sensing System, children are safer when properly secured in a rear seat in the appropriate infant, child or booster seat. Never place a rear-facing infant restraint in the front seat of any vehicle equipped with an active frontal airbag. See your vehicle Owner's Manual and child safety seat instructions for more safety information.

Safety or driver-assistance features are no substitute for the driver's responsibility to operate the vehicle in a safe manner. The driver should remain attentive to traffic, surroundings and road conditions at all times. Visibility, weather and road conditions may affect feature performance. Read the vehicle Owner's Manual for more important feature limitations and information.

# AS IF DRIVING YOUR CANYON ISN'T ENTERTAINING ENOUGH



In Canyon, your always-connected life won't stop because you're on the go. You'll find technologies designed to keep you entertained, in sync, informed, powered up and heading in the right direction.

\*Go to [my.gmc.com/learnabout/bluetooth](http://my.gmc.com/learnabout/bluetooth) to find out which phones are compatible with the vehicle. Full Bluetooth® feature functionality varies by device, model and software version. †Functionality varies by model. Full functionality requires compatible Bluetooth and smartphones, and USB connectivity for some devices. ‡Map coverage available in the United States, Puerto Rico and Canada. ††The system wirelessly charges one compatible mobile device. Some phones have built-in wireless charging technology and others require a special adapter/back cover. To check for phone or other device compatibility, see [my.gmc.com/learn](http://my.gmc.com/learn) or consult your carrier.



#### CANYON OFFERS:

- DRIVER INFORMATION CENTER
- BLUETOOTH CONNECTIVITY†
- GMC INFOTAINMENT SYSTEM\* WITH 8" DIAGONAL COLOR TOUCH-SCREEN AND NAVIGATION‡ IS AVAILABLE
- WIRELESS CHARGING†† IS AVAILABLE
- BOSE® PREMIUM SEVEN-SPEAKER AUDIO SYSTEM IS AVAILABLE

# GO FAR, STAY CLOSE



#### CANYON OFFERS:

- APPLE CARPLAY™ COMPATIBILITY<sup>1</sup> FOR IPHONE<sup>®</sup> (SHOWN TOP LEFT)
- ANDROID AUTO™ COMPATIBILITY<sup>2</sup>
- 4G LTE WI-FI<sup>®</sup> HOTSPOT<sup>3</sup>

#### GMC CONNECTED SERVICES<sup>4</sup>

Your new Canyon offers a host of in-vehicle benefits.

Connected Access<sup>5</sup> offers the latest technology to help you make the most of every drive—and you get connectivity for 10 years on most models<sup>6</sup> giving you access to current features like monthly diagnostic emails and the ability to order and pay for takeout food and purchase fuel through your vehicle's in-dash infotainment system with Marketplace. You can also take your ownership experience to new levels by upgrading to other GMC Connected Services.

#### myGMC APP<sup>7</sup>

When you download the available myGMC app, you have access to features like scheduling service, getting tips to help improve your driving, instant offers from select nearby merchants and other ways to simplify your ownership experience. When you upgrade to Remote Access<sup>8</sup> you can remotely start and stop the engine (if properly equipped), check fuel levels and even set and share notifications for vehicle arrivals and departures with Vehicle Locate<sup>9</sup>.

Discover how to stay connected at [gmc.com](http://gmc.com).

<sup>1</sup>Vehicle user interface is a product of Apple® and its terms and privacy statements apply. Requires compatible iPhone® and data plan rates apply. Apple CarPlay is a trademark of Apple, Inc. Siri, iPhone and Apple Music are trademarks of Apple, Inc., registered in the U.S. and other countries. <sup>2</sup>Vehicle user interface is a product of Google™ and its terms and privacy statements apply. Requires the Android Auto app on Google Play and an Android™-compatible smartphone running Android 5.0 or higher. Data plan rates apply. Android Auto is a trademark of Google LLC. <sup>3</sup>Service varies with conditions and location. Requires active service plan and paid AT&T® data plan. See [onstar.com](http://onstar.com) for details and limitations. <sup>4</sup>Connected services vary by vehicle model and require active service plan, working electrical system, cell reception and GPS signal. Does not include emergency or security services. See [onstar.com](http://onstar.com) for details and limitations. <sup>5</sup>Standard connectivity available only to original purchaser for 10 years. Services enabled by Connected Access are subject to change. Does not include emergency or security services. See [onstar.com](http://onstar.com) for details and limitations. <sup>6</sup>Not available on SL trim. Available on Canyon trim. Included on all other trims. <sup>7</sup>Available on select Apple® and Android devices. Service availability, features and functionality vary by vehicle, device and the plan you are enrolled in. Terms apply. Device data connection required. See [onstar.com](http://onstar.com) for details and limitations. <sup>8</sup>Remote Access Plan does not include emergency or security services. See [onstar.com](http://onstar.com) for details and limitations. Lock/unlock feature requires automatic locks. Remote start requires GM factory-installed and enabled remote-start system. U.S., Canada and Mexico only. Requires select paid plan. Service is designed to locate compatible connected vehicles. Eligibility varies by vehicle model. Functionality varies by mobile device. Message and data rates may apply. Requires contact method on file and enrollment to receive alerts. Terms and limitations apply. See [onstar.com](http://onstar.com) for details. <sup>9</sup>Requires select paid plan and compatible smartphone. Locates compatible connected vehicles. Text and data rates apply. Requires contact method on file and enrollment to receive alerts. See [onstar.com](http://onstar.com) for details and limitations.

# THE QUESTION IS, WHICH ONE?

Choose the Canyon that's right for you at [gmc.com/build-and-price](http://gmc.com/build-and-price). All vehicles shown with available equipment.

## CANYON TRIMS



**SL AND CANYON** models come with the essentials, including features such as a 2.5L I4 engine paired with a 6-speed automatic transmission, StabiliTrak with Trailer Sway Control, a CornerStep rear bumper, 4-way power driver seat, traction control and a Rear Vision Camera.\*



**SLE** includes most Canyon standard content and adds a 6-way power driver seat, heated power-adjustable exterior mirrors, remote keyless entry, a leather-wrapped steering wheel with audio controls, an 8" diagonal GMC Infotainment System,† EZ-Lift and Lower Tailgate and a High Definition Rear Vision Camera.†



**SLT** includes most SLE standard content with additional features such as a 3.6L V6 engine with 8-speed automatic transmission, Rear Park Assist,† remote vehicle start, wireless charging\*\* for compatible smartphones, a 4-way power front-passenger seat with power lumbar control and heated leather-appointed front bucket seats.



**DENAI** is the ultimate expression of Professional Grade. Includes most SLT standard content and offers additional features such as heated and ventilated perforated leather-appointed front seats, an 8" diagonal Premium GMC Infotainment System<sup>2</sup> with Navigation,† a Bose® Premium Audio System, under-rail LED cargo bed lighting, 20" diamond-cut machined aluminum wheels with painted accents and a spray-on bedliner.

## SELECT CANYON PACKAGES



**ALL TERRAIN**† includes most SLE standard content and adds features such as an off-road suspension system, heated front seats, an automatic locking rear differential, Hill Descent Control and unique exterior and interior features.



**ELEVATION EDITION** is available in both Extended Cab and Crew Cab configurations. It includes most SLE standard content and adds features that set the truck apart, such as a body-color grille surround with black inserts and special 18" Satin Graphite painted aluminum wheels.



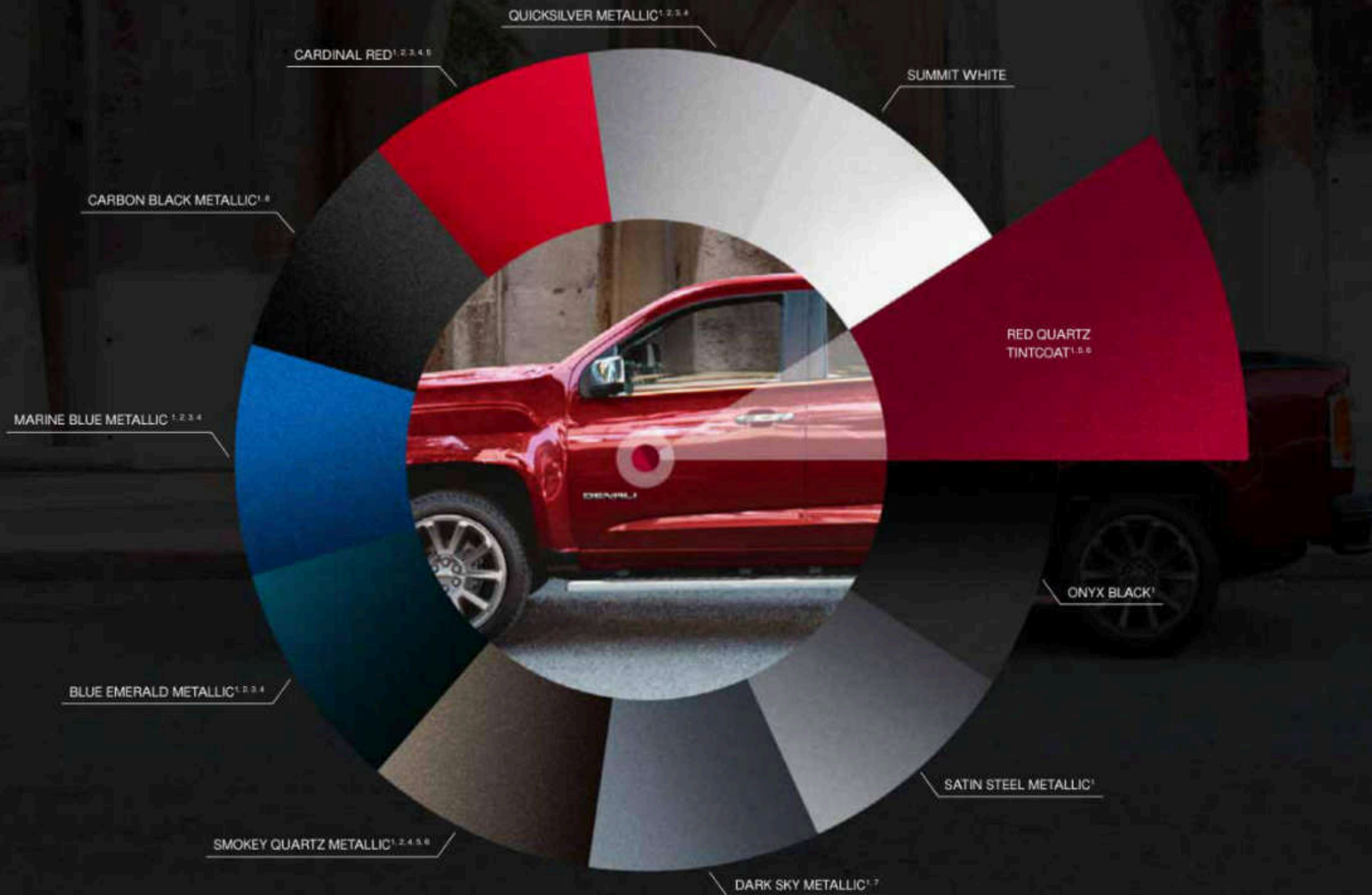
**ALL TERRAIN X PACKAGE** includes All Terrain standard content and adds black 3" round step bars, all-weather floor liners, a spray-on bedliner and 31" Goodyear® Wrangler DuraTrac® tires.

\*Read the vehicle Owner's Manual for important feature limitations and information. †Functionality varies by model. Full functionality requires compatible Bluetooth® and smartphone, and USB connectivity for some devices. †Photo shown with available All Terrain X Package and dealer-installed GM accessory sport bar. †The system wirelessly charges one compatible mobile device. Some phones have built-in wireless charging technology and others require a special adapter/back cover. To check for phone or other device compatibility, see [gmc.com/learn](http://gmc.com/learn) or consult your carrier. †Map coverage available in the United States, Puerto Rico and Canada.

See your dealer or [gmc.com](http://gmc.com) for more package details and requirements.

# COLOR YOUR WORLD

## EXTERIOR



## INTERIOR

### COLORS

#### VINYL



Jet Black/Dark Ash — Standard on SL. Available on Canyon.

#### CLOTH



Jet Black/Dark Ash — Standard on Canyon.



Cocoa/Dune — Standard on SLE.



Jet Black/Dark Ash — Standard on SLE.



Jet Black/Dark Ash With Cobalt Red Accents — Standard on All Terrain.

#### LEATHER APPOINTMENTS



Jet Black/Dark Ash With Cobalt Red Accents — Available on All Terrain Crew Cab.



Cocoa/Dune — Standard on SLT.



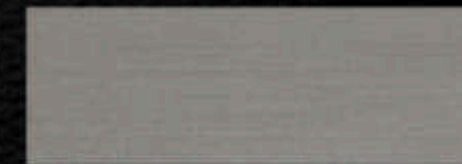
Jet Black/Dark Ash — Standard on SLT.



Jet Black/Dark Ash Perforated — Standard on Denali.

### DETAILS

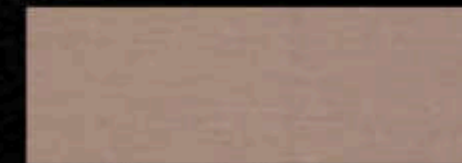
#### FINISHES



Axiom Aluminum — Standard on SLE/SLT.



Dark Aluminum — Standard on All Terrain.

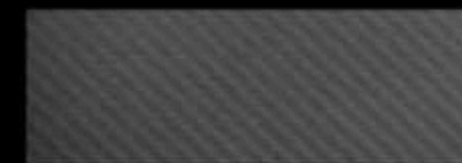


Burnished Aluminum — Standard on Denali.

#### DOOR/CONSOLE ACCENTS



Smoked Mahogany Wood Tone — Standard on SLE/SLT.



Off-Road Carbon Accent — Standard on All Terrain.



Hanon Oak Wood Tone — Standard on Denali.

<sup>1</sup>Extra-cost color. <sup>2</sup>Not available on Elevation Edition. <sup>3</sup>Not available on Denali. <sup>4</sup>Not available on All Terrain. <sup>5</sup>Not available on SL. <sup>6</sup>Not available on Canyon trim. <sup>7</sup>Limited availability. <sup>8</sup>Late availability.

See your GMC dealer or [gmc.com](http://gmc.com) for more interior and exterior color details.

# DESIGNED FOR DISTINCTION



16" Ultra-Silver Metallic (RS1) — Standard on SL and Canyon



17" Bright Silver Cast Aluminum (RID) — Standard on SLE



17" Dark Argent Metallic Cast Aluminum (R1U) — Included and Only Available on All Terrain



18" Multi-Spoke Satin Graphite Painted Aluminum (REG) — Included and Only Available on Elevation Edition



18" Polished Cast Aluminum (RT5) — Standard on SLT



20" Diamond-Cut Machined Aluminum With Painted Accents (RQ9) — Standard on Denali



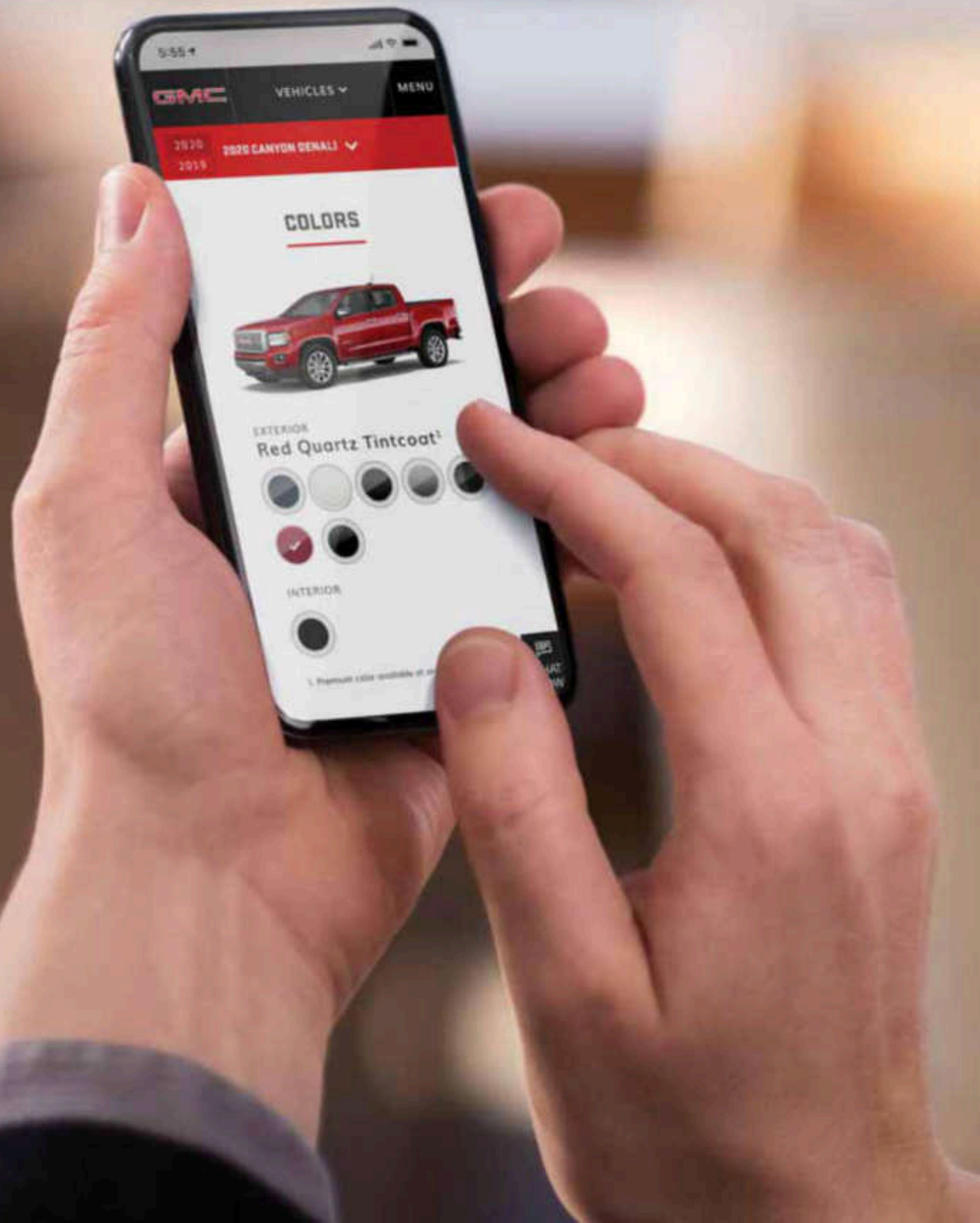
20" Low-Gloss Black Aluminum (RZO) Accessory Wheel<sup>1</sup> — Available on Denali Models Only

<sup>1</sup>Use only GM-approved tire and wheel combinations. See [gmc.com/accessories](http://gmc.com/accessories) for important tire and wheel information, or see your dealer.

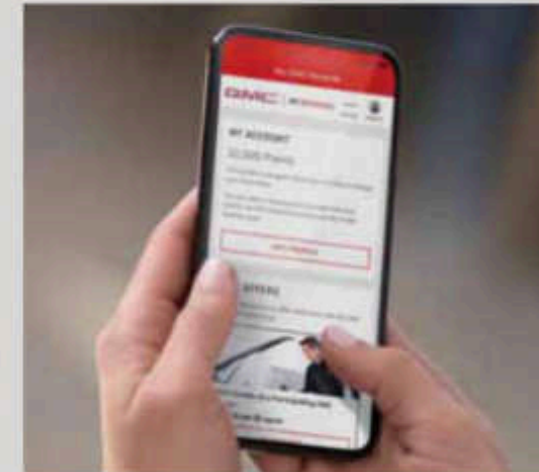
# YOUR CANYON STARTS HERE



GMC's smart, comprehensive online tools elevate your shopping experience. Learn more about Canyon's features, find the model that's right for you and sign up for email updates at [gmc.com/canyon](http://gmc.com/canyon).



# THE REWARDS OF OWNERSHIP

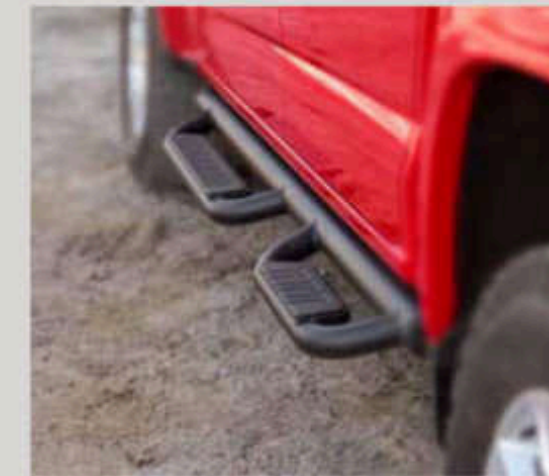


As rewarding as driving a Canyon is, the rewards start long before getting behind the wheel. With My GMC Rewards,<sup>1</sup> you can earn and redeem points on a wide array of GMC products and services, including the purchase of a new Professional Grade GMC vehicle. To enroll and learn more, visit [mygmcrewards.com](http://mygmcrewards.com) or use the myGMC app.<sup>2</sup> Then once you're behind the wheel, a GMC Certified Service dealer is there to help your Canyon live up to its performance promise. GM-trained technicians build upon their meticulous skill with Vehicle Diagnostics<sup>3</sup> and connected technologies to deliver the authentic expertise your GMC deserves.

Top image: Canyon color shown has limited availability. <sup>1</sup>Must be 18 years or older. Points may be earned and redeemed only at participating GM entities, dealers or third-party retailers in the United States (excluding Puerto Rico, the U.S. Virgin Islands or Guam). Points are not earned on taxes or certain fees and expire 5 years from when points are earned. Any unused amount of the voucher will be forfeited. Some restrictions apply. Visit [mygmcrewards.com](http://mygmcrewards.com) to view program Terms and Conditions. <sup>2</sup>Available on select Apple<sup>®</sup> and Android<sup>™</sup> devices. Service availability, features and functionality vary by vehicle, device and the plan you are enrolled in. User terms apply. Device data connection required. See [onstar.com](http://onstar.com) for details and limitations. <sup>3</sup>Diagnostic capabilities vary by model and plan. Message and data rates may apply. Requires contact method on file and enrollment to receive alerts. Not all issues will deliver alerts. See [onstar.com](http://onstar.com) for details and limitations.



## BEFORE HEADING OUT, WE SUGGEST YOU GEAR UP



GMC Accessories are the only way to fully personalize your entire Canyon—inside and out. They're engineered and tested to meet the Professional Grade standards of your Canyon, as well as your own.

Find a full selection of Canyon accessories at [gmc.com/accessories](https://gmc.com/accessories).

Use only GM-approved tire and wheel combinations. See [gmc.com/accessories](https://gmc.com/accessories) for important tire and wheel information, or see your dealer.

**PROFESSIONAL GRADE**

**IS OUR DNA**



SIERRA HEAVY DUTY



CANYON



SIERRA



YUKON



TERRAIN



ACADIA

Canyon color shown has limited availability

# DRIVE THE CONVERSATION

## NEW VEHICLE LIMITED WARRANTY

**3-YEAR/36,000-MILE BUMPER-TO-BUMPER LIMITED WARRANTY** GMC will warrant each 2020 Canyon from bumper to bumper for 3 years/36,000 miles (whichever comes first, see dealer for details), with no deductible, from the original in-service date of the vehicle, for warrantable repairs that are required as a result of defects due to materials and/or workmanship. Cosmetic corrosion resulting from defects is also covered under the Bumper-to-Bumper Limited Warranty. In addition, rust-through corrosion will be covered for 6 years/100,000 miles (whichever comes first, see dealer for details).

**POWERTRAIN LIMITED WARRANTY** Every 2020 GMC Canyon comes with a 5-year/60,000-mile (whichever comes first) transferable Powertrain Limited Warranty. 24/7 Roadside Assistance and Courtesy Transportation are also offered for the duration of the Powertrain Limited Warranty. Please see your GMC dealer for details.

## ONSTAR® AND GMC CONNECTED SERVICES

Connected vehicle services require a paid connected vehicle services plan or trial, connected hardware, vehicle electrical system (including battery), wireless service and GPS satellite signal to be available and operating for features to function properly. OnStar acts as a link to existing emergency service providers. Visit [onstar.com](http://onstar.com) for coverage map, details and system limitations.

## GMC CERTIFIED SERVICE

To help your Canyon live up to its performance promise, GMC Certified Service—found exclusively at your GMC dealer—is there. With all the engineering excellence in Canyon, GM-trained technicians have the expertise to help care for it.

## ADDITIONAL NOTES

**A NOTE ON CHILD SAFETY** Always use seat belts and the correct child restraint for your child's age and size, even with airbags. Even in vehicles equipped with the Passenger Sensing System, children are safer when properly secured in a rear seat in the appropriate infant, child or booster seat. Never place a rear-facing infant restraint in the front seat of any vehicle equipped with an active frontal airbag. See the Owner's Manual and the child safety seat instructions for more safety information.

**TRAILERING AND OFF-ROAD DRIVING INFORMATION** Please go to [gmc.com](http://gmc.com) and carefully review the vehicle Owner's Manual for important safety information about trailering or off-road driving in your vehicle.

**FLEET ORDERS** Some standard content may be deleted on fleet orders. See dealer for details.

**ENGINES** GMC products are equipped with engines produced by GM Powertrain or other suppliers to GM worldwide. The engines in GMC products may also be used in other GM makes and models.

**GMC.COM** See more of Canyon on our website: [gmc.com/canyon](http://gmc.com/canyon). More photos and information; hot links to related subjects; convenient dealer locator; pricing guide. Spec out your own vehicle. Or call 1-800-GMC-8782.

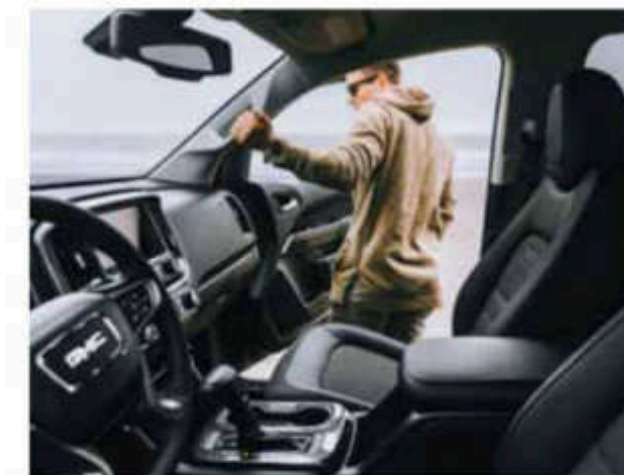
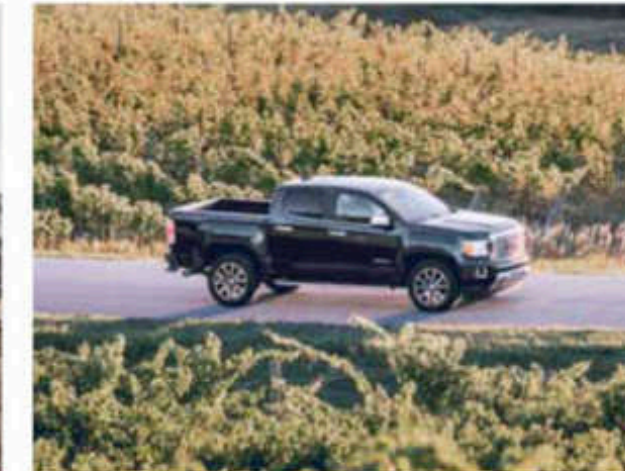
**IMPORTANT WORDS ABOUT THIS CATALOG** We have tried to make this catalog comprehensive and factual. We reserve the right, however, to make changes at any time, without notice, in prices, colors, materials, equipment, specifications, models and availability. Specifications, dimensions, measurements, ratings and other numbers in this catalog and other printed materials provided at the dealership or affixed to vehicles are approximations based on design and engineering drawings, prototypes and laboratory tests. Your vehicle may differ due to variations in manufacture and equipment. Since some information may have been updated since the time of printing, please check with your GMC dealer for complete details. GMC reserves the right to lengthen or shorten the model year for any product for any reason or to start and end model years at different times. Certain vehicle features may lose their usefulness over time due to obsolescence from technological changes. Unless otherwise noted, all claims based on GM Mid Pickup segment and latest available competitive information available at time of printing. Excludes other GM vehicles.

**AN IMPORTANT NOTE ABOUT ALTERATIONS AND WARRANTIES** Installations or alterations to the original equipment vehicle (or chassis) as distributed by General Motors are not covered by the General Motors New Vehicle Limited Warranty. The special body company, assembler, equipment installer or upfitter is solely responsible for warranties on the body or equipment and any alterations (or any effect of the alterations) to any of the parts, components, systems or assemblies installed by GM. General Motors is not responsible for the safety or quality of design, features, materials or workmanship of any alterations by such employers.

**ASSEMBLY** GMC vehicles and their components are assembled or produced by different operating units of General Motors, its subsidiaries or suppliers to GM worldwide. We sometimes find it necessary to produce GMC vehicles with different or differently sourced components than originally scheduled. Since some options may be unavailable when your vehicle is assembled, we suggest you verify that your vehicle includes the equipment you ordered and that, if there were changes, they are acceptable to you.

**GMMOBILITY.COM** (1-800-323-9935) GM Mobility offers financial assistance for eligible adaptive equipment to make automotive travel easier for persons with disabilities or special transportation needs. To learn more about special GM Mobility offers, visit [gmmobility.com](http://gmmobility.com).

©2019 General Motors. All rights reserved. GM, the GM logo, GMC, the slogans, emblems, vehicle model names, vehicle body designs and other marks appearing in this catalog are the trademarks and/or service marks of General Motors, its subsidiaries, affiliates or licensors. Facebook is a registered trademark of Facebook, Inc. Twitter is a registered trademark of Twitter, Inc. YouTube is a registered trademark of Google LLC. Instagram is a registered trademark of Instagram, LLC. Android Auto is a trademark of Google LLC. Apple, CarPlay, iPhone and Siri are registered trademarks of Apple, Inc.



GMC.COM