

CANYON

2021 GMC

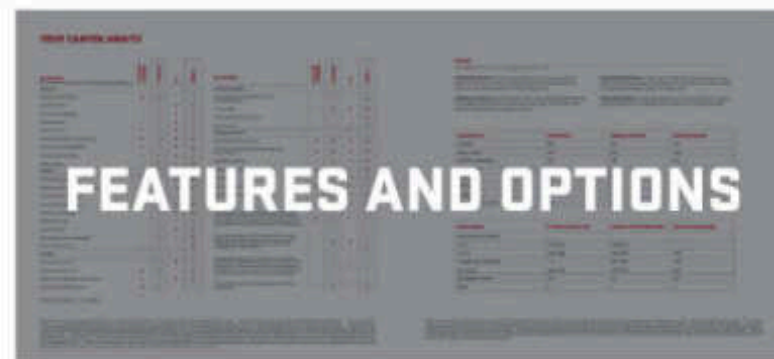
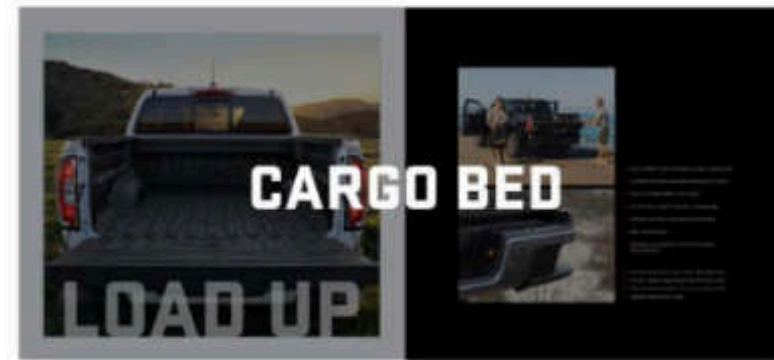


GMC

WE ARE PROFESSIONAL GRADE

CANYON

CONTENTS



LIVE LIKE A PRO



Pros know that true adventure is rarely paved. Because beyond the pavement lie millions of miles waiting to be explored, conquered and claimed. And now, the New 2021 Canyon is ready to take you there. It seamlessly combines rugged capability, distinctive design, premium accommodations and the relentless power necessary to keep up with the fiercely adventurous.

Experience the midsize pickup built to go beyond—the 2021 GMC Canyon.

Canyon AT4 images shown throughout include available accessories.



DRIVE LIKE YOU MEAN IT

CAPABLE

- 308 HP WITH AVAILABLE 3.6L V6
- 369 LB-FT OF TORQUE WITH AVAILABLE DURAMAX 2.8L I4 TURBO DIESEL
- OFF-ROAD SUSPENSION PACKAGE AND ADVANCED HILL DESCENT CONTROL ON AT4
- ACCESSORY FRONT AND MID SKID PLATES ARE AVAILABLE
- 31" GOODYEAR® WRANGLER DURATRAC® TIRES ON AT4
- AUTOMATIC LOCKING REAR DIFFERENTIAL IS AVAILABLE

REFINED

- DENALI-EXCLUSIVE 5" CHROME ASSIST STEPS
- DENALI-EXCLUSIVE INTERIOR WITH FRONT HEATED AND VENTILATED LEATHER-APPOINTED SEATING
- BOSE® PREMIUM AUDIO SYSTEM IS AVAILABLE
- SPRAY-ON BEDLINER WITH DENALI LOGO IS AVAILABLE

SMART

- IN-VEHICLE APPS¹ SUCH AS THE WEATHER CHANNEL AND AMAZON ALEXA BUILT-IN² ARE AVAILABLE
- APPLE CARPLAY™³ COMPATIBILITY
- ANDROID AUTO™⁴ COMPATIBILITY
- WIRELESS CHARGING⁵ IS STANDARD ON DENALI AND AVAILABLE ON AT4

The New 2021 Canyon is designed and engineered to achieve demanding tasks and keep pace with you. Unrestrained energy? Check. Commanding presence? For sure. Formidable capability? Definitely. Canyon is built to enable your passions and wanderlust. Its maneuverability, efficiency and comfort make it the midsize pickup created for adventure. For unpaved journeys, the First Ever Canyon AT4 knows the way. For comfortable, premium travels, Canyon Denali dials up the refinement. And for a distinctively unique style, there's Canyon Elevation.

¹Available on select 2017 model year and newer GM vehicles with compatible hardware. Third-party trademarks are the property of their respective third-party owners and used under agreement. Requires active service plan and paid AT&T® vehicle data plan. See onstar.com for details and limitations. ²Functionality is subject to limitations and varies by vehicle, infotainment system and location. Select service plan required. Certain Alexa Skills require account linking to use. Amazon, Alexa and all related marks are trademarks of Amazon.com, Inc. or its affiliates. See onstar.com for additional details. ³Vehicle-user interface is a product of Apple® and its terms and privacy statements apply. Requires compatible iPhone® and data plan rates apply. Apple CarPlay is a trademark of Apple, Inc. Siri, iPhone and Apple Music are trademarks of Apple, Inc., registered in the U.S. and other countries. ⁴Vehicle user interface is a product of Google™ and its terms and privacy statements apply. Requires the Android Auto app on Google Play and a compatible smartphone running Android™ 5.0 or higher. Data plan rates apply. Android Auto is a trademark of Google LLC. ⁵The system wirelessly charges one compatible mobile device. Some phones have built-in wireless charging technology and others require a special adapter/back cover. To check for phone or other device compatibility, see my.gmc.com/learn or consult your carrier.



FIRST EVER CANYON AT4: ADVENTURE UNBOUND



AT4

- | 308-HP V6 OR AVAILABLE DURAMAX 2.8L TURBO DIESEL
- | 31" GOODYEAR WRANGLER DURATRAC TIRES
- | BOLD EXTERIOR WITH SIGNATURE AT4 BLACK CHROME GRILLE
- | AT4-EXCLUSIVE LEATHER-APPOINTED FRONT SEATS WITH KALAHARI ACCENTS ARE AVAILABLE
- | RED FRONT RECOVERY HOOKS¹
- | OFF-ROAD SUSPENSION PACKAGE
- | ADVANCED HILL DESCENT CONTROL
- | 4WD WITH 2-SPEED AUTOTRAC TRANSFER CASE AND AUTOMATIC LOCKING REAR DIFFERENTIAL
- | ADDITIONAL ACCESSORY FRONT AND MID SKID PLATES ARE AVAILABLE

The First Ever Canyon AT4 is built for those with the drive to go beyond. Its power, capability and fiercely assertive style let you leave the limitations of the road behind. It's powered by a 308-hp V6 engine or the 369 lb-ft of torque of the available Duramax 2.8L Turbo Diesel. That power is put to good use by 4WD with a 2-speed AutoTrac transfer case, Off-Road Suspension Package, Advanced Hill Descent Control and automatic locking rear differential. Get out there, because your mind shouldn't be the only thing doing the wandering.

¹To avoid the risk of injury, never use recovery hooks to tow a vehicle. For more information, see the Recovery Hooks section of the vehicle Owner's Manual.



OFF THE GRID, IN COMMAND

AT4



Inside, you'll find the best of both worlds: the grandeur of America's most breathtaking remote vistas through every window and a supportive cabin that's undeniably premium. Canyon AT4 is outfitted with available Jet Black leather-appointed front seats featuring Kalahari accents, dark-finished aluminum trim and advanced technologies. And when the temperature drops, heated front seats and an available heated steering wheel provide plenty of warmth.

- LEATHER-APPOINTED FRONT SEATS ARE AVAILABLE
- DARK-FINISHED ALUMINUM TRIM
- IN-VEHICLE APPS¹ SUCH AS THE WEATHER CHANNEL AND AMAZON ALEXA BUILT-IN² ARE AVAILABLE
- APPLE CARPLAY^{TM3} COMPATIBILITY
- ANDROID AUTO⁴ COMPATIBILITY
- WIRELESS CHARGING⁵ IS AVAILABLE
- BOSE PREMIUM SEVEN-SPEAKER AUDIO SYSTEM IS AVAILABLE



¹Available on select 2017 model year and newer GM vehicles with compatible hardware. Third-party trademarks are the property of their respective third-party owners and used under agreement. Requires active service plan and paid AT&T vehicle data plan. See onstar.com for details and limitations. ²Functionality is subject to limitations and varies by vehicle, infotainment system and location. Select service plan required. Certain Alexa Skills require account linking to use. Amazon, Alexa and all related marks are trademarks of Amazon.com, Inc. or its affiliates. See onstar.com for additional details. ³Vehicle user interface is a product of Apple[®] and its terms and privacy statements apply. Requires compatible iPhone[®] and data plan rates apply. Apple CarPlay is a trademark of Apple, Inc. Siri, iPhone and Apple Music are trademarks of Apple, Inc., registered in the U.S. and other countries. ⁴Vehicle user interface is a product of Google and its terms and privacy statements apply. Requires the Android Auto app on Google Play and a compatible smartphone running Android 5.0 or higher. Data plan rates apply. Android Auto is a trademark of Google LLC. ⁵The system wirelessly charges one compatible mobile device. Some phones have built-in wireless charging technology and others require a special adapter/lock cover. To check for phone or other device compatibility, see my.gm.com/learn or consult your carrier for more information.



BADGE OF HONOR



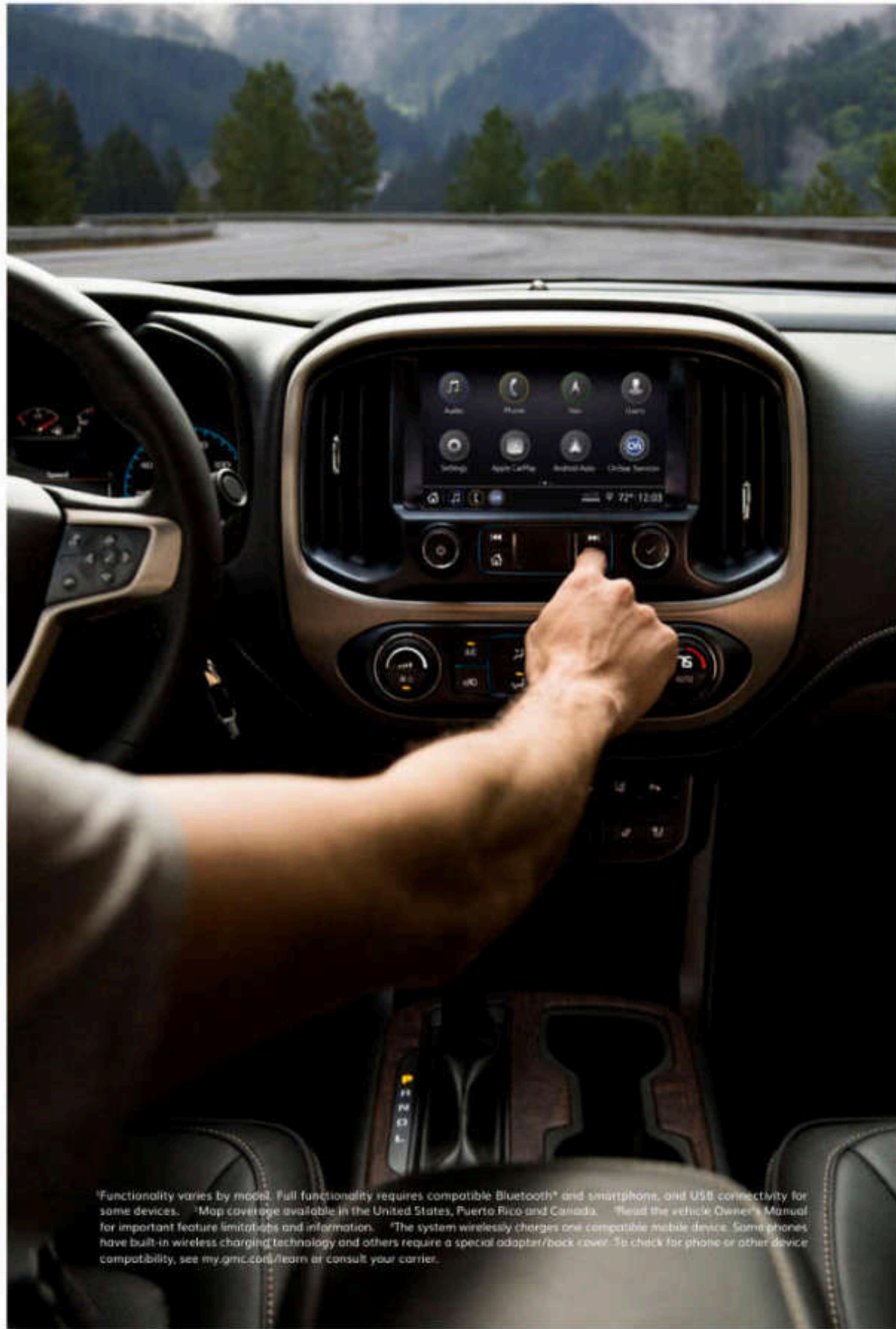
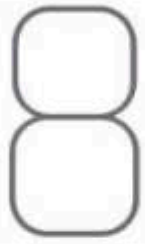
DENALI



- NEW FRONT DESIGN AND SIGNATURE DENALI GRILLE
- DENALI-EXCLUSIVE 5" CHROME ASSIST STEPS
- SPRAY-ON BEDLINER WITH DENALI LOGO
- PROJECTOR-BEAM HEADLAMPS AND LED FOG LAMPS
- 20" DIAMOND-CUT MACHINED ALUMINUM WHEELS
- CHROME DOOR HANDLES AND MIRROR CAPS

The New 2021 Canyon Denali confidently stands apart. Details such as its bold, heroic, redesigned grille define its commanding attitude. Together with a refined, premium cabin and seamlessly integrated advanced technologies, Canyon Denali takes the pinnacle of Professional Grade to new places.





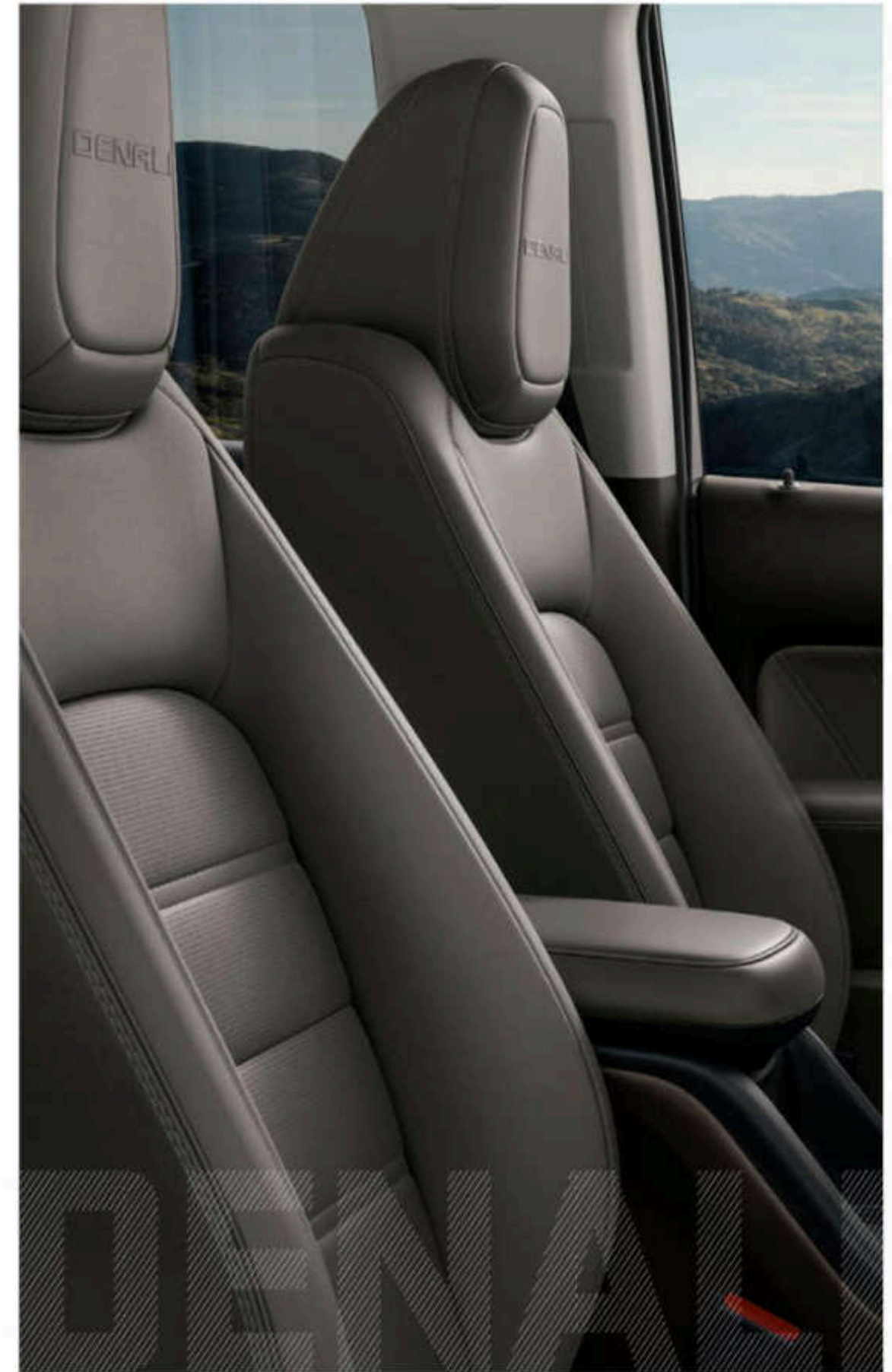
*Functionality varies by model. Full functionality requires compatible Bluetooth® and smartphone, and USB connectivity for some devices. †Map coverage available in the United States, Puerto Rico and Canada. ‡Read the vehicle Owner's Manual for important feature limitations and information. ††The system wirelessly charges one compatible mobile device. Some phones have built-in wireless charging technology and others require a special adapter/back cover. To check for phone or other device compatibility, see my.gmc.com/learn or consult your carrier.



DETAILS. DETAILS. DETAILS.

- FRONT HEATED AND VENTILATED LEATHER-APPOINTED SEATING
- HAND-STITCHED AND HEATED LEATHER-WRAPPED STEERING WHEEL
- GMC INFOTAINMENT SYSTEM[†] WITH NAVIGATION^{††}
- BOSE PREMIUM SEVEN-SPEAKER AUDIO SYSTEM
- HIGH DEFINITION REAR VISION CAMERA^{†††}
- WIRELESS CHARGING^{††††}
- FORWARD COLLISION ALERT^{†††††} AND LANE DEPARTURE WARNING^{†††††}

Inside Canyon Denali, you'll find premium materials throughout. Embroidered Denali front-seat head restraints, supportive heated and ventilated perforated leather-appointed front seats with unique contrasting stitching and new authentic ash wood trim refine the premium experience. And because it's Denali, there are acoustical innovations such as an inlaid door design, triple door seals, shear-style body mounts and a liquid-applied sound absorber that all help keep outside noises where they belong—outside.





HIGH STYLE

Canyon Elevation's bold presence tells the world that something distinctive is headed its way. It's highlighted by stylish exterior design elements, including 18" black painted aluminum wheels and a new, bold black front grille with body-color surround. Stay well-connected where you roam with an array of technologies that seamlessly links you to your Elevation. Choose Elevation in either Extended Cab or Crew Cab configurations. Add the High Elevation Package to get premium heated Jet Black leather-appointed front seating, a heated steering wheel and power lumbar control for the driver seat.



POWER AT PLAY

- 200 HP WITH 2.5L I4 (ELEVATION STANDARD AND ELEVATION TRIMS ONLY)
- 308 HP WITH AVAILABLE 3.6L V6
- 369 LB-FT OF TORQUE WITH AVAILABLE DURAMAX 2.8L I4 TURBO DIESEL ENGINE
- 6-SPEED AND 8-SPEED AUTOMATIC TRANSMISSIONS ARE AVAILABLE
- 2-SPEED AUTOTRAC TRANSFER CASE IS AVAILABLE
- AUTOMATIC LOCKING REAR DIFFERENTIAL IS AVAILABLE
- DURALIFE BRAKE ROTORS
- DIESEL EXHAUST BRAKE (WITH AVAILABLE TURBO DIESEL ENGINE ONLY)

To take on nature's challenges, Canyon's power begins with the 200-hp 2.5L I4 engine. The power curve ramps up fast with the available 3.6L V6, or for exceptional low-end torque to tackle off-road obstacles, there's the available Duramax 2.8L I4 Turbo Diesel engine.

Learn more about Canyon's powertrain technologies at gmc.com.





LEAVE NO ADVENTURE BEHIND

Big adventures often require big equipment. That's why we made Canyon strong enough to trailer up to a maximum 7,700 lbs¹ when equipped with the Duramax 2.8L Turbo Diesel and the available Trailering Package. It trailers up to 7,000 lbs¹ (as shown) with the available 3.6L V6 engine and the Trailering Package. The gas I4 can trailer up to 3,500 lbs¹ with a bumper-mounted ball hitch. Canyon also offers available features to further enhance your trailering confidence: a trailer brake controller, Tow/Haul mode, Hitch Guidance and a Diesel Exhaust Brake for use with the Turbo Diesel engine.

¹7,700-lb rating requires 2WD Canyon Elevation Crew Cab short bed model with available Duramax 2.8L Turbo Diesel engine and Trailering Package. 7,000-lb rating requires available 3.6L V6 engine and Trailering Package. Before you buy a vehicle or use it for trailering, carefully review the Trailering section of the Owner's Manual. The weight of passengers, cargo and options or accessories may reduce the amount you can tow.



- ▮ ROLL-FORMED HIGH-STRENGTH STEEL CARGO BED
- ▮ CORNERSTEP REAR BUMPER AND HAND ASSISTS
- ▮ SPRAY-ON BEDLINER IS AVAILABLE
- ▮ EZ-LIFT AND LOWER TAILGATE IS AVAILABLE
- ▮ REMOTE LOCKING TAILGATE IS AVAILABLE
- ▮ RAIL PROTECTORS
- ▮ MOVABLE ACCESSORY UPPER TIE-DOWNS ARE AVAILABLE

This bed works hard and smart. We engineered Canyon's large cargo bed to fit all of your gear. Then we made it easier to get into, and to load, organize and secure cargo.



CANYON OFFERS:

- FORWARD COLLISION ALERT
- REAR PARK ASSIST
- LANE DEPARTURE WARNING
- TEEN DRIVER
- HIGH DEFINITION REAR VISION CAMERA
- ONSTAR® SAFETY & SECURITY PLAN¹

Canyon's available collision-avoidance and driver assistance technologies are engineered to help enhance your awareness of the road and surrounding vehicles. Additional peace of mind is provided by six standard airbags.²

Safety or driver-assistance features are no substitute for the driver's responsibility to operate the vehicle in a safe manner. The driver should remain attentive to traffic, surroundings and road conditions at all times. Visibility, weather and road conditions may affect feature performance. Read the vehicle Owner's Manual for more important feature limitations and information.

CONFIDENCE DRIVES WITH YOU



¹OnStar plan, working electrical system, cell reception and GPS signal required. OnStar links to emergency services. See onstar.com for details and limitations. ²A NOTE ON CHILD SAFETY: Always use seat belts and the correct child restraint for your child's age and size, even with airbags, even in vehicles equipped with the Passenger Sensing System; children are safer when properly secured in a rear seat in the appropriate infant, child or booster seat. Never place a rear-facing infant restraint in the front seat of any vehicle equipped with an active frontal airbag. See your vehicle Owner's Manual and child safety seat instructions for more safety information.

**CONNECT WITH
ADVENTURE**



- ADVANCED GMC INFOTAINMENT SYSTEM¹ WITH NAVIGATION² IS AVAILABLE
- BOSE PREMIUM SEVEN-SPEAKER AUDIO SYSTEM IS AVAILABLE
- IN-VEHICLE APPS³ SUCH AS THE WEATHER CHANNEL AND AMAZON ALEXA BUILT-IN⁴ ARE AVAILABLE
- WIRELESS CHARGING⁵ IS AVAILABLE

When you're ready to go, head out knowing that the Canyon cabin surrounds you with technologies designed to keep you entertained, informed, powered up and heading in the right direction.

¹Functionality varies by model. Full functionality requires compatible Bluetooth and smartphone, and USB connectivity for some devices. ²Map coverage available in the United States, Puerto Rico and Canada. ³Available on select 2017 model year and newer GM vehicles with compatible hardware. Third-party trademarks are the property of their respective third-party owners and used under agreement. Requires active service plan and paid AT&T vehicle data plan. See onstar.com for details and limitations. ⁴Functionality is subject to limitations and varies by vehicle, infotainment system and location. Select service plan required. Certain Alexa Skills require account linking to use. Amazon, Alexa and related marks are trademarks of Amazon.com, Inc., or its affiliates. See onstar.com for additional details. ⁵The system wirelessly charges one compatible mobile device. Some phones have built-in wireless charging technology and others require a special adapter/back cover. To check for phone or other device compatibility, see my.gmc.com/learn or consult your carrier.



IN TOUCH. IN COMMAND.

CANYON OFFERS:

- GMC CONNECTED SERVICES¹
- ONSTAR SAFETY AND SECURITY²
- myGMC MOBILE APP³
- AMAZON ALEXA BUILT-IN⁴
- 4G LTE WI-FI⁵ HOTSPOT⁶
- APPLE CARPLAY⁷ COMPATIBILITY
- ANDROID AUTO⁸ COMPATIBILITY
- IN-VEHICLE APPS⁹ SUCH AS SPOTIFY¹⁰



¹Connected services vary by vehicle model and require active service plan, working electrical system, cell reception and GPS signal. Does not include emergency or security services. See onstar.com for details and limitations. ²OnStar plan, working electrical system, cell reception and GPS signal required. OnStar links to emergency services. See onstar.com for details and limitations. ³Available on select Apple[®] and Android devices. Service availability, features and functionality vary by vehicle, device and the plan you are enrolled in. Terms apply. Device data connection required. See onstar.com for details and limitations. ⁴Functionality is subject to limitations and varies by vehicle, infotainment system and location. Select service plan required. Certain Alexa Skills require account linking to use Amazon, Alexa, Amazon Music and all related marks are trademarks of Amazon.com, Inc. and its affiliates. See onstar.com for additional details. ⁵Service varies with conditions and location. Requires active service plan and paid AT&T[®] data plan. See onstar.com for details and limitations. ⁶Vehicle user interface is a product of Apple[®] and its terms and privacy statements apply. Requires compatible iPhone[®] and data plan rates apply. Apple CarPlay is a trademark of Apple, Inc. Siri, iPhone and Apple Music are trademarks of Apple, Inc., registered in the U.S. and other countries.



MORE CONFIDENCE, MORE CONNECTIVITY, MORE CHOICE

Prepare for the unexpected and enjoy the seamless experience of a completely connected drive. GMC Connected Services offers you an elevated ownership experience. And with available OnStar, you get added peace of mind knowing an Emergency-Certified Advisor²² is ready to help 24/7.

24/7 LIFELINE When the unexpected happens, the last thing you want to be is alone. With OnStar, you can have added peace of mind knowing help is only a button-push away. The available OnStar Safety & Security Plan² provides 24/7 access to a specially trained OnStar Advisor who can help in the event of a crash, vehicle theft,¹¹ emergency or other unexpected situation you may encounter on the road. If a vehicle crash is detected, available Automatic Crash Response¹² can alert an Emergency-Certified Advisor²² who can send help, even if you can't ask for it. Drive with added confidence knowing a real person is always ready to help.

myGMC MOBILE APP Convenience, command and control, in or out of your vehicle. With the available myGMC mobile app,² you can start your engine, check fuel levels and tire pressure and even personalize your vehicle by setting radio station favorites and installing in-vehicle apps⁹—all from your smartphone. You can also schedule service appointments, learn driving tips and more.

EXPLORE MORE, ALEXA'S ON BOARD The Alexa functionality you enjoy at home is now fully integrated into your GMC Infotainment System.¹³ With available Alexa Built-In,⁴ you can use voice commands to stream your favorite music services such as Spotify⁸ or Amazon Music, get directions, make calls, change your radio station and get routes to the nearest dealership—on the go. Alexa can also make shopping lists, play and resume audiobooks and get the score to last night's game.

¹¹Vehicle user interface is a product of Google and its terms and privacy statements apply. Requires the Android Auto app on Google Play and a compatible smartphone running Android 5.0 or higher. Data plan rates apply. Android Auto is a trademark of Google LLC. ¹²Available on select 2017 model year and newer GM vehicles with compatible hardware. Third-party trademarks are the property of their respective third-party owners and used under agreement. Requires active service plan and paid AT&T vehicle data plan. See onstar.com for details and limitations. ¹³Requires premium subscription to use Spotify. Visit spotify.com/autob on your smartphone, tablet or computer to purchase a Premium Spotify subscription. Available only on vehicles equipped with an iOS, Android or IoT infotainment system. ²²OnStar Emergency Advisors are certified by the International Academies of Emergency Dispatch. ²³Requires armed GM factory-installed theft-deterrent system and enrollment to receive alerts. Additional texting and data rates apply. Doesn't prevent theft, damage or loss. ²⁴Not all vehicles may transmit all crash data. ²⁵Functionality varies by model. Full functionality requires compatible Bluetooth and smartphone, and USB connectivity for some devices.



YOUR CANYON AWAITS

KEY FEATURES	ELEVATION STANDARD	ELEVATION	AT4	DENALI
CAPABILITY				
2.5L DDHC I4 VVT (DMD Only)	●	●	—	—
3.6L DI DDHC V6 VVT	○	○	●	●
Duramax 2.8L I4 Turbo Diesel	—	○	○	○
Hill Descent Control	—	—	●	—
Transfer Case Shift	—	—	●	—
2-Speed Auto/Trac Transfer Case (4WD Only)	●	●	●	●
Automatic Locking Rear Differential	○	○	●	●
DH-Road Suspension Package	—	—	●	—
Trailer Package	○	○	○	●
INTERIOR				
Soft-Touch Instrument Panel	—	●	●	●
Leather-Appointed Front Seats (Front and Rear on Denali)	—	○	○	●
4-Way Power Driver Seat Adjuster	●	—	—	—
8-Way Power Driver Seat Adjuster	—	●	●	●
Power Driver Lumbar Control	—	○	●	●
Ventilated Front Seats	—	—	—	●
Heated Front Seats	—	○	●	●
Base 7-Speaker Premium Audio System	—	○	○	●
Premium Denali Floor Mats	—	—	—	●
EXTERIOR				
Rear Recovery Hooks, Front	—	—	●	—
Black Recovery Hooks, Front	●	●	—	●
Wheels, 17" Dark Argent Metallic Cast Aluminum	—	—	●	—
Wheels, 18" Black Painted Aluminum	●	●	—	—

● Standard ○ Available — Not Available

KEY FEATURES	ELEVATION STANDARD	ELEVATION	AT4	DENALI
EXTERIOR CONTINUED				
Wheels, 20" Diamond-Cut Machined Aluminum With Painted Accents	—	—	—	●
LED Fog Lamps	—	●	●	●
5" Rectangular Chrome Assist Steps	—	—	—	●
Zone-On Seating	○	○	○	●
TECHNOLOGY & SAFETY				
StabiliTrak Stability Control System	●	●	●	●
Tire Pressure Monitoring System (Excludes Spare Tire) With Tire Fill Alert	●	●	●	●
Lane Departure Warning*	—	○	○	●
Forward Collision Alert*	—	○	○	●
Rear Park Assist†	—	○	○	●
Rear Vision Camera†	●	●	●	—
High Definition Rear Vision Camera†	—	○	○	●
Wireless Charging*	—	—	○	●
DHC Infotainment System* With 7" Diagonal Color Touch-Screen, AM/FM Stereo With Seek and Scan and Digital Clock, Bluetooth™ Streaming Audio for Music and Select Phones, and Apple CarPlay™ Compatibility and Android Auto™ Compatibility for Compatible Phones				
DHC Infotainment System* With 8" Diagonal Color Touch-Screen, AM/FM Stereo, Bluetooth™ Streaming Audio for Music and Most Phones, and Apple CarPlay™ Compatibility and Android Auto™ Compatibility for Compatible Phones				
DHC Infotainment System* With 8" Diagonal Color Touch-Screen, AM/FM Stereo, Bluetooth™ Streaming Audio for Music and Most Phones, Apple CarPlay™ Compatibility and Android Auto™ Compatibility for Compatible Phones, Advanced Voice Recognition, In-Vehicle Apps† and Personalized Profiles for Infotainment and Vehicle Settings				
DHC Infotainment System* With 8" Diagonal Color Touch-Screen and Navigation†				

SELECT PACKAGES

See your GMC dealer or gmc.com for more package details and requirements.

CONVENIENCE PACKAGE Includes remote keyless entry, remote locking tailgate, electronic cruise control, rear-window electric defogger, theft-deterrent system and EZ-Lift and Lower Tailgate (available on Elevation Standard only)

DRIVER ALERT PACKAGE† Includes Forward Collision Alert and Lane Departure Warning. Also includes Rear Park Assist on Elevation and AT4 trims with Jet Black cloth interior. (available on Elevation and AT4; Standard on Denali.)

HIGH ELEVATION PACKAGE Includes Jet Black leather-appointed front seating, heated driver and front-passenger seats, heated steering wheel and power driver lumbar-control seat adjuster (late availability; available on Elevation only)

TRAILERING PACKAGE Includes trailer hitch and 7-pin connector (available on Elevation Standard, Elevation and AT4; standard on Denali and all Crew Cab long bed models)

DIMENSIONS (IN.)	EXTENDED CAB	CREW CAB SHORT BED	CREW CAB LONG BED
WHEELBASE	128.3	128.3	142.5
OVERALL LENGTH	212.4	212.4	224.6
BODY WIDTH, WITH MIRRORS	83.3	83.5	83.5
FRONT HEAD ROOM	41.4	41.4	41.4
REAR HEAD ROOM	38.7	38.3	38.3
FRONT LEG ROOM	45.0	45.0	45.0
REAR LEG ROOM	29.5	35.8	35.8
CARGO BED LENGTH, AT FLOOR	74.0	61.7	74.0

MAX CAPACITIES	EXTENDED CAB (2WD/4WD)	CREW CAB SHORT BED (2WD/4WD)	CREW CAB LONG BED (4WD)
TRAILER WEIGHT RATINGS ¹ (LBS)			
2.5L I4	3,600/3,600	3,600/3,600	—
3.6L V6	7,000 ² /7,000 ²	7,000 ² /7,000 ²	7,000 ²
DURAMAX 2.8L I4 TURBO DIESEL	— / —	7,000 ² /7,000 ²	7,550 ²
PAVLOAD (LBS)	1,583 ³ /1,520 ³	1,578 ³ /1,537 ³	1,476 ³
FUEL TANK (GAL., APPROX.)	21.0	21.0	21.0
SEATING	4	5	6

¹To avoid the risk of injury, never use recovery hooks to tow a vehicle. For more information, see the Recovery Hooks section of the vehicle Owner's Manual. ²Read the vehicle Owner's Manual for important feature limitations and information. ³The system wirelessly charges one compatible mobile device. Some phones have built-in wireless charging technology and others require a special adapter/charger. To check for phone or other device compatibility, see my.gmc.com/owner or consult your dealer. ⁴Functionality varies by model. Full functionality requires compatible Bluetooth and smartphone, and USB connectivity for some devices. ⁵Go to my.gmc.com/learnabout/bluetooth to find out which phones are compatible with the vehicle. Full Bluetooth feature functionality varies by device, model and software version. ⁶Vehicle user interface is a product of Apple® and its terms and privacy statements apply. Requires compatible iPhone® and data plan rates apply. Apple CarPlay is a trademark of Apple, Inc. Siri, Phone and Apple Music are trademarks of Apple, Inc. registered in the U.S. and other countries. ⁷Vehicle user interface is a product of Google™ and its terms and privacy statements apply. Requires the Android Auto app on Google Play and a compatible smartphone running Android™ 5.0 or higher. Data plan rates apply. Android Auto is a trademark of Google LLC. ⁸Available on select 2017 model year and newer GM vehicles with compatible hardware. ⁹Not your trademark are the property of their respective third-party owners and used under agreement. Requires active service plan and paid ATN™ vehicle data plan. See onstar.com for details and limitations. ¹⁰Map coverage available in the United States, Puerto Rico and Canada.

¹¹Before you buy a vehicle or use it for trailering, carefully review the trailering section of the Owner's Manual. The weight of passengers, cargo and options or accessories may reduce the amount you can tow. ¹²Requires available Trailering Package. ¹³7,000-lb rating requires a properly equipped 2WD Canyon Elevation Crew Cab short bed model with available Duramax 2.8L I4 Turbo Diesel engine and Trailering Package. 7,550-lb rating requires a properly equipped 4WD Canyon Crew Cab Elevation, AT4 or Denali short bed model with available Duramax 2.8L I4 Turbo Diesel engine and Trailering Package. ¹⁴7,000-lb rating requires a properly equipped 4WD Canyon Crew Cab Elevation, AT4 or Denali long bed model with available Duramax 2.8L I4 Turbo Diesel engine and Trailering Package. ¹⁵Requires properly equipped vehicle. These maximum payload ratings are intended for comparison purposes only. Before you buy a vehicle or use it to haul people or cargo, carefully review the vehicle loading section of the Owner's Manual and check the carrying capacity of your specific vehicle on the label on the inside of the driver's doorjamb.

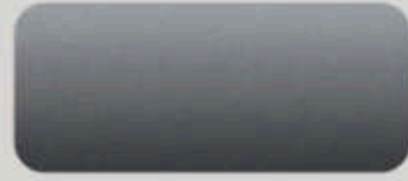
FIND YOUR TRUE COLORS

EXTERIOR COLORS

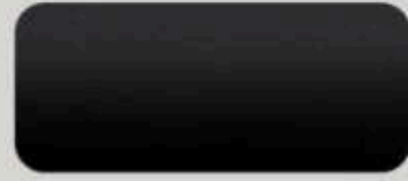
ELEVATION STANDARD, ELEVATION, AT4, DENALI



SUMMIT WHITE



SATIN STEEL METALLIC*



ONYX BLACK*

ELEVATION STANDARD, ELEVATION



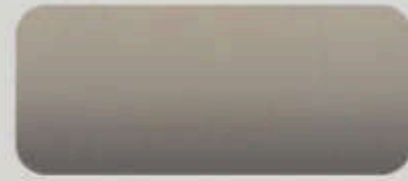
DYNAMIC BLUE METALLIC*

ELEVATION, AT4, DENALI



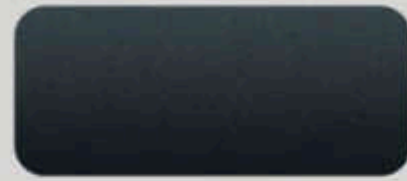
CAYENNE RED TINTCOAT*

ELEVATION, AT4



DESERT SAND METALLIC*

DENALI EXCLUSIVE



HUNTER METALLIC*

INTERIOR COLORS

ELEVATION STANDARD



JET BLACK/DARK ASH VINYL



JET BLACK/DARK ASH CLOTH

ELEVATION



JET BLACK/JET BLACK CLOTH



JET BLACK/JET BLACK FRONT LEATHER-APPOINTED



SMOKED MAHOGANY WOOD TONE



AXION ALUMINUM

AT4



JET BLACK/JET BLACK CLOTH WITH KALAHARI ACCENTS



JET BLACK/JET BLACK FRONT LEATHER-APPOINTED WITH KALAHARI ACCENTS



OFF-ROAD CARBON ACCENT



DARK ALUMINUM

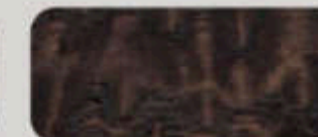
DENALI



COCOA/DARK ATMOSPHERE PERFORATED LEATHER-APPOINTED



JET BLACK/JET BLACK PERFORATED LEATHER-APPOINTED



ASH WOOD



BURNISHED ALUMINUM

*Extra-cost color.

See your GMC dealer or gmc.com for more interior and exterior color details.



PRECISION-CRAFTED FROM THE GROUND UP

17"



17" Dark Argent Metallic
Cast Aluminum (R1U)
Standard on AT4

18"



18" Black Painted
Aluminum (RCW)
Standard on all
Elevation models

20"



20" Diamond-Cut
Machined Aluminum
With Painted Accents (RQ9)
Standard on Denali



20" Low-Gloss Black Aluminum
(RZ0) Accessory Wheel¹
Available on Denali

¹Use only GM-approved tire and wheel combinations. See gmc.com/accessories for important tire and wheel information, or see your dealer.





JUST YOUR STYLE



- ▶ ALL-WEATHER FLOOR LINERS
- ▶ BLACK TUBULAR SPORT BAR WITH CANYON SCRIPT
- ▶ SPORT BAR MOUNTED OFF-ROAD LAMPS
- ▶ MOVABLE CARGO TIE-DOWN RINGS (SET OF 4)

GMC Accessories are a great way to personalize your Canyon—inside and out. They're designed and engineered to meet the Professional Grade standards of your Canyon, as well as your own. We also offer accessories from a lineup of other renowned and proven manufacturers.

Find a full selection of Canyon accessories at gmc.com/accessories.



ProRide™ upright bicycle carrier in black by Thule and GearOn™ cross rails (not shown).



20

POWERED BY PROFESSIONAL GRADE



SIERRA HEAVY DUTY

CANYON

SIERRA 1500

YUKON

TERRAIN

ACADIA

Preproduction models shown. Actual production models may vary. Sierra HD Denali color, Hunter Metallic, is late availability. Terrain Denali in Graphite Gray Metallic is limited late availability.



DRIVE THE CONVERSATION

NEW VEHICLE LIMITED WARRANTY

3-YEAR/36,000-MILE BUMPER-TO-BUMPER LIMITED WARRANTY GMC will warrant each 2021 Canyon from bumper to bumper for 3 years/36,000 miles (whichever comes first; see dealer for details), with no deductible, from the original in-service date of the vehicle, for warrantable repairs that are required as a result of defects due to materials and/or workmanship. Cosmetic corrosion resulting from defects is also covered under the Bumper-to-Bumper Limited Warranty. In addition, rust-through corrosion will be covered for 6 years/100,000 miles (whichever comes first; see dealer for details).

POWERTRAIN LIMITED WARRANTY Every 2021 GMC Canyon comes with a 5-year/60,000-mile (whichever comes first) transferable Powertrain Limited Warranty. 24/7 Roadside Assistance and Courtesy Transportation are also offered for the duration of the Powertrain Limited Warranty. Please see your GMC dealer for details.

ONSTAR® AND GMC CONNECTED SERVICES

Connected vehicle services vary by vehicle model and require working electrical system, cell reception and GPS signal. Requires active service plan. OnStar links to emergency services. See onstar.com for details and limitations.

GMC CERTIFIED SERVICE

To help your Canyon live up to its performance promise, GMC Certified Service—found exclusively at your GMC dealer—is there. With all the engineering excellence in Canyon, GM-trained technicians have the expertise to help care for it.

ADDITIONAL NOTES

A NOTE ON CHILD SAFETY Always use seat belts and the correct child restraint for your child's age and size, even with airbags. Even in vehicles equipped with the Passenger Sensing System, children are safer when properly secured in a rear seat in the appropriate infant, child or booster seat. Never place a rear-facing infant restraint in the front seat of any vehicle equipped with an active frontal airbag. See the Owner's Manual and the child safety seat instructions for more safety information.

TRAILERING AND OFF-ROAD DRIVING INFORMATION Please go to gmc.com and carefully review the vehicle Owner's Manual for important safety information about trailering or off-road driving in your vehicle.

FLEET ORDERS Some standard content may be deleted on fleet orders. See dealer for details.

ENGINES GMC products are equipped with engines produced by GM Powertrain or other suppliers to GM worldwide. The engines in GMC products may also be used in other GM makes and models.

GMC.COM See more of Canyon on our website: gmc.com/canyon. More photos and information; hot links to related subjects; convenient dealer locator; pricing guide; spec out your own vehicle. Or call 1-800-GMC-8782.

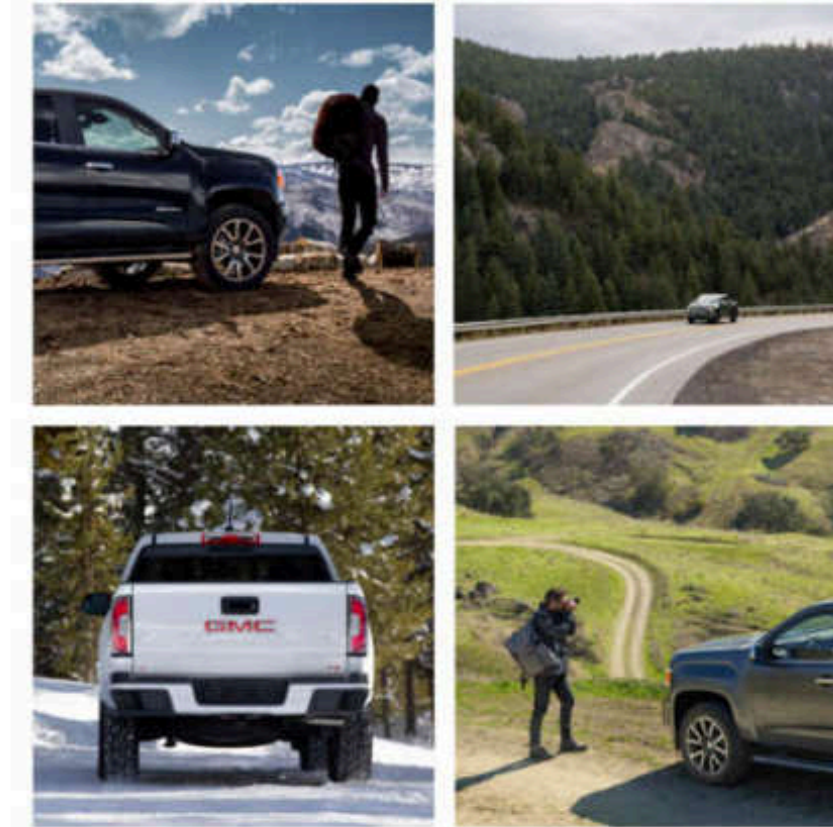
IMPORTANT WORDS ABOUT THIS CATALOG We have tried to make this catalog comprehensive and factual. We reserve the right, however, to make changes at any time, without notice, in prices, colors, materials, equipment, specifications, models and availability. Specifications, dimensions, measurements, ratings and other numbers in this catalog and other printed materials provided at the dealership or affixed to vehicles are approximations based on design and engineering drawings, prototypes and laboratory tests. Your vehicle may differ due to variations in manufacture and equipment. Since some information may have been updated since the time of printing, please check with your GMC dealer for complete details. GMC reserves the right to lengthen or shorten the model year for any product for any reason or to start and end model years at different times. Certain vehicle features may lose their usefulness over time due to obsolescence from technological changes. Unless otherwise noted, all claims based on GM Mid Pickup segment and latest available competitive information available at time of printing. Excludes other GM vehicles.

AN IMPORTANT NOTE ABOUT ALTERATIONS AND WARRANTIES Installations or alterations to the original equipment vehicle (or chassis) as distributed by General Motors are not covered by the General Motors New Vehicle Limited Warranty. The special body company, assembler, equipment installer or upfitter is solely responsible for warranties on the body or equipment and any alterations (or any effect of the alterations) to any of the parts, components, systems or assemblies installed by GM. General Motors is not responsible for the safety or quality of design, features, materials or workmanship of any alterations by such employers.

ASSEMBLY GMC vehicles and their components are assembled or produced by different operating units of General Motors, its subsidiaries or suppliers to GM worldwide. We sometimes find it necessary to produce GMC vehicles with different or differently sourced components than originally scheduled. Since some options may be unavailable when your vehicle is assembled, we suggest you verify that your vehicle includes the equipment you ordered and that, if there were changes, they are acceptable to you.

GMMOBILITY.COM (1-800-323-9935) GM Mobility offers financial assistance for eligible adaptive equipment to make automotive travel easier for persons with disabilities or special transportation needs. To learn more about special GM Mobility offers, visit gmmobility.com.

©2020 General Motors. All rights reserved. GM, the GM logo, GMC, the slogan, emblems, vehicle model names, vehicle body designs and other marks appearing in this catalog are the trademarks and/or service marks of General Motors, its subsidiaries, affiliates or licensors. Facebook is a registered trademark of Facebook, Inc. Twitter is a registered trademark of Twitter, Inc. YouTube is a registered trademark of Google LLC. Instagram is a registered trademark of Instagram, LLC. Android Auto is a trademark of Google LLC. Apple, CarPlay, iPhone and Siri are registered trademarks of Apple, Inc.



GMC.COM | #GMC | #LIKEAPRO | #GMCCANYON

