

1 9 9 0

SAFARI

GMC
TRUCK



- NEW ALL WHEEL DRIVE MODELS
- NEW EXTENDED BODY MODELS
- 4-WHEEL ANTI-LOCK BRAKES
- LIMITED WARRANTY -
3 YEARS/50,000 MILES

Introducing: More Space, More Power, More Grip On The Road

New Safari All Wheel Drive+ ...a GM first in vans. Order your new Safari with all wheel drive and get a grip on the road with four driving wheels instead of two. That means an extra measure of traction on roads slick with rain or snow. And because it's a full-time all wheel drive system, it delivers maximum traction automatically in all kinds of driving situations — there are no levers to shift or buttons to push. Safari All Wheel Drive models come on a 111-inch wheelbase in either regular body or new XT extended body versions*. All Wheel Drive models are not intended for off-road usage.

All Wheel Drive grips the road with 4-wheel traction.



New Safari XT extended body models. Stretch your cargo capacity with this extra-size version of Safari. It adds 10 inches in overall body length for an extra 18.6 cu ft of cargo volume, with no increase in the 111-inch wheelbase. It's just about as easy to handle and park as a regular Safari.



An extra 10" stretches Safari XT cargo space.

New 4-wheel anti-lock brake system. A feature found on many high-priced luxury vehicles, this advanced system is now standard on all Safari models. See page 8 for details.

New available high-output 4.3L H.O. Vortec V6*. Here's the biggest, most powerful V6 you can get in a mid-size 2-WD van. Rated at 170 SAE net horsepower at 4800 RPM (estimated), it has plenty of muscle for carrying passengers or pulling trailers.

* - Available October, 1989.
* - Available January, 1990.



SLT interior with available 8-person seating arrangement (rear seat center backrests shown folded down)

SLT

Recommended For Luxury

Presenting a magnificent combination of van-sized space and luxury-car elegance. SLT goes the limit in style, convenience and comfort, with special distinction inside and out.

For the exterior, choose one of two special solid paint colors, new Catalina Blue Metallic or Caramel Brown Metallic. Wheels are painted to complement the exterior color scheme selected. Other special touches include an air dam with fog lamps, SLT body nameplates and swing-out rear door glass. New standard features for '90 SLTs include deep-tinted window glass, black body side moldings with bright trim and bright trim for the front bumper rub strip.

The richly appointed interior features special bench and bucket seats with elegant new Velour Cloth upholstery in Saddle or Dark Blue. Folding armrests, reclining seat backs and adjustable headrests add to the comfort level.

Plus these special luxury touches: padded interior trim panels to match the seat upholstery, sport steering wheel, storage pocket at rear of seat backs and rear compartment storage pouch with zipper. Color-keyed floor mats, an illuminated right-hand visor mirror and a combination front dome and reading lamp are new enhancements for '90.



New XT All Wheel Drive model with SLT trim and other available equipment.



New, restyled instrument panel for all models has larger glove box and improved air distribution. Gage-type instrumentation is standard.

INDEX

	PAGE
SLT	2-3
SLE	4-5
SLX	6-7
Options/Quality Features	8
GT Package	9
Engines/Trailering	9
Standard & Available Equipment	10
Technical Information/Exterior Colors	11
Owner Benefits	Back Cover

S L E

Deluxe All The Way

It doesn't matter whether you order SLE trim with a regular Safari or with a new XT extended body model. Either way, you'll discover a remarkably high level of appearance, luxury and convenience.

The standard interior includes high-back front bucket seats plus a 3-passenger center bench seat trimmed in Custom Cloth or Custom Vinyl. Color choices are Dark Blue, Saddle, Slate Gray or new Garnet.

Other tasteful touches include color-keyed floor carpeting and carpet trim throughout, full-length headliner, front door map pockets, custom steering wheel and interior trim panels with decorative cloth inserts.

As with all Safari models for '90, a restyled instrument panel adds new looks, a larger glove box and improved air distribution. Standard conveniences include an instrument gage package with trip odometer and electric speedometer, headlamp warning chimes, retractable coat hooks, cigarette lighter with ashtray illumination, convenience tray and stepwell lamps. SLEs also come equipped with new standard swing-out rear door glass, tinted window glass all around, color-keyed floor mats, illuminated right-hand visor mirror and combination front dome and reading lamp.

If you'd like even more comfort and luxury, select from a long list of available options like reclining high back bucket seats with armrests, air conditioning and overhead storage console with dome and reading lamps.

Outside, SLE makes a powerful statement in style with a black and argent deluxe grille and painted bumpers with color-keyed end caps and black rub strips. Plus new standard features such as fog lamps, Rally wheels, black body side moldings with bright trim and bright trim for the front bumper rub strip.



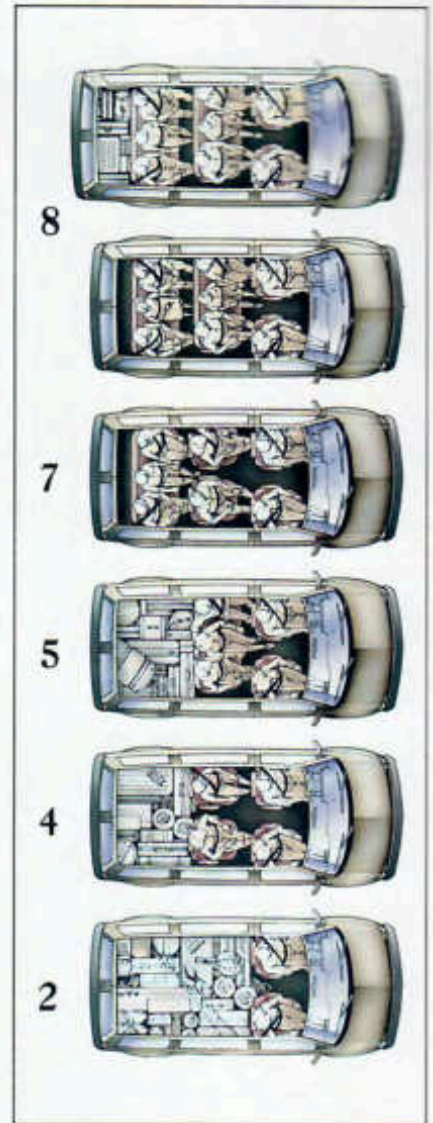
New XT All Wheel Drive model with SLE trim and other available equipment.



New XT models can carry up to eight passengers, or up to 170.4 cu ft of cargo.



Safari Seating - All Models



SLE interior shown with Custom Cloth seat trim and available 8-person seating

Available 8-person seating. Standard 5-person seating plus a 3-passenger rear bench seat. Extended body model provides for additional cargo or baggage, as shown in top view above.

Available 7-person seating. Four high-back reclining bucket seats with dual folding armrests plus a 3-passenger rear bench seat.

Standard 5-person seating. Two high-back front bucket seats and center 3-passenger bench seat with 85.8 cu ft cargo space behind the bench seat (104.4 cu ft with extended body XT models).

4-person seating. By removing the rear bench seat included with available 7-person seating, you can have seating for four persons plus 83.7 cu ft of cargo space (102.3 cu ft with extended body XT models).

2-person seating. Removal of bench seat(s) included with standard 5-person or available 8-person seating permits seating for two and opens up 151.8 cu ft of cargo space (170.4 cu ft with extended body XT models).

SLX

Uncommon
Standard
Value



As standard models go, SLX goes the distance for smart good looks and comfort. In fact, it offers many of the features found in uplevel SLT and SLE trim. Plus, it's available in the full range of Safari model choices: rear wheel drive, all wheel drive, regular or extended length body.

The handsome interior can be ordered in Dark Blue, Saddle, Slate Gray or new Garnet. It includes such deluxe features as high-back front bucket seats and a 3-passenger center bench seat, all with practical Vinyl upholstery. Or choose available Custom Vinyl or Custom Cloth trim. (See page 5 for available seating arrangements.) A full-length cloth headliner adds to the decor.

For 1990, the interior comes with new standard items such as color-keyed carpeting for the floor and wheelhousings and a cigarette lighter. There's also a restyled instrument panel with full-gage package and electric speedometer.

A long list of standard conveniences includes new standard intermittent windshield wiper system, tinted glass and electronically-tuned AM/FM stereo radio with seek-scan, digital clock and premium speakers. Plus front door map pockets, remote fuel-filler door release and winch-type spare tire and wheel carrier. All-season comfort is enhanced with an improved deluxe heater/ventilation system having power air vents and side window defoggers.

The exterior is distinguished by a black grille, black rearview mirrors and black-out paint on body and door areas between the windows. Black plastic front bumper guards are included on All Wheel Drive models. New standard halogen headlamps provide impressive night visibility, and a new heavy-duty battery contributes to electrical system reliability.

Choose from 10 standard solid paint colors, including new Midnight Blue Metallic. Painted bumpers are keyed to the exterior color scheme.

If you'd care to personalize your SLX, select from such available options as Custom or Deluxe Two-Tone paint and chromed bumpers. See pages 8 and 11 for further details.



SLX shown with available equipment.



SLX interior shown with Custom Cloth seat trim and available 7-person seating.

OPTIONS



Electronic instrumentation



Delco Full-Feature AM stereo*/FM stereo radio



Comfortilt steering wheel**



Front air conditioning



Power window/door lock package



Roof storage console with dome and reading lamps



Electric remote control mirrors



Aluminum wheels

Personalize your Safari. Safari can be ordered with a variety of available options, some of which are described on this page and on page 10.

Appearance and convenience equipment includes: Electronic instrumentation Electronic speed control/Comfortilt steering wheel package 6-way power adjuster for driver seat Deep-tinted glass (standard on SLT models) Black roof-mounted

luggage carrier Chromed front and rear bumpers Interior roof console Power window/door lock package Rear heater Cold climate package.

Delco radio equipment (electronically-tuned) includes: AM/FM stereo radio with stereo cassette tape, seek-scan, digital clock and premium speakers Full-feature AM stereo*/FM stereo radio with seek-scan, stereo cassette tape with search & repeat,

graphic equalizer, digital clock and premium speakers.

Chassis equipment includes: Locking differential rear axle Engine oil cooler HD radiator with transmission oil cooler HD radiator (included with air conditioning) Sport suspension.

* Receives C-Quam® AM stereo broadcasts. Most AM stereo stations across the country broadcast in C-Quam, but some do not. Check with your local stations for compatibility in your area.

** Part of a package. Consult your GMC Truck Dealer for details.

QUALITY FEATURES

Safari vans are built to deliver the solid performance and long-run reliability you expect from a GMC Truck. Here are just a few of the features that make Safari a pleasure to own:

New four-wheel anti-lock brake system is standard on all models. It's designed to help maintain steering control during hard braking. It also helps provide smooth, stable stops on slick or dry pavements.

Electric speedometer provides accurate readings. And there's no cable to break or make noise.

27-gallon fuel tank allows impressive driving range between fill-ups.

Power steering is standard on all models to help make Safari easy to drive.

A quality ride results from features like computer-selected front coil springs (2-WD) or torsion bars (4-WD), variable-rate composite rear springs, front stabilizer bar and heavy-duty front and rear shock absorbers.

Integral body-frame construction adds to structural rigidity and helps reduce body noise. Stretch-formed outer panels and inner rear quarter panels provide tight, solid body construction.

Swing-out rear doors are a big convenience. Unlike vans with rear liftgates, Safari's double rear doors don't interfere with access to roof-mounted luggage. A wide sliding side door helps ease loading and unloading.

Anti-corrosion protection helps keep Safari looking good. This deep-down protection begins with the use of 2-side galvanized steel for all exterior body panels except the roof. Hot-melt wax is sprayed on the entire underbody and anti-corrosion coatings are applied to fuel lines and parking brake conduits. The body receives an 8-stage zinc-phosphate wash; a cathodic primer immersion which applies primer paint evenly to all surfaces and crevices, including metal parts later assembled to the body; an anti-chip spray below the lower styling feature line; a high-solids enamel base coat and, finally, a brilliant clear gloss top coat.



GT model shown with available aluminum wheels.

ENGINES

Safari continues to offer the highest V6 power in its class. The standard 4.3 Liter Vortec V6 with Electronic Fuel Injection pumps out 150 SAE net horsepower at 4000 RPM for impressive performance and towing ability.

NEW HIGH-OUTPUT POWER

If you want the ultimate in 2-WD Safari performance, specify the new available high-output 4.3 Liter H.O. Vortec V6* with Electronic Fuel Injection. Equipped with high-lift camshaft, dual tail pipes and low-restriction sport muffler, this aggressive engine delivers a whopping 170 SAE net HP at 4800 RPM (estimated). It's an ideal power choice for big loads and heavy towing (not available on All Wheel Drive models).

HIGH-TECH POWER

Both 4.3 Liter EFI Vortec V6 engines

are state-of-the-art powerplants designed for smooth, responsive operation. Features include: Electronic Fuel Injection for quick starts and impressive driveability Swirl-port induction design for efficient mixing of fuel and air Electronic Spark Control system to help control spark knock while maintaining optimum advance firing characteristics Anti-friction hydraulic valve lifters for operating efficiency Single-belt accessory drive designed for automatic adjustment and long service life.

OVERDRIVE TRANSMISSION

A 4-speed automatic transmission with overdrive is standard on all Safari models. You get the convenience of an automatic transmission plus the advantages of overdrive.

VORTEC V6 ENGINE SPECIFICATIONS

Displacement/Configuration	4.3L (262 CID) V6	
Engine Ordering Code	LB4	LU2*
Fuel Delivery	electronic fuel injection	
Bore and Stroke (in)	4.0 x 3.48	
Compression Ratio	9.3 to 1	
SAE Net Horsepower @ RPM	150 @ 4000	170 @ 4800*
SAE Net Torque (lb/ft) @ RPM	230 @ 2400	235 @ 3200*

* High-output (H.O.) version. Available January, 1990 for 2-WD models only.

+ Estimated.

GT PACKAGE

Get ready for a genuine GT experience. This available package for 2-WD models not only adds a sporty touch to the good looks of a Safari, but equips it with a road-hugging suspension that includes front and rear stabilizer bars and gas pressure shocks plus high-performance, low-profile GT + 4 tires.

Outside there's a special blacked-out grille, window and bumper treatment with red accent striping. Other features include simulated air exhaust louvers on the upper rear quarter panel (except XT models), Custom Two-Tone paint, wide body side and rear moldings with red accent striping, air dam with fog lamps and Rally wheels. Aluminum wheels are available. See page 10 for additional information.

TRAILERING

Safari offers more trailer-towing muscle than any other mid-size van. A properly equipped Safari can pull gross trailer weights of up to 6000 lbs — that includes trailer, passengers and cargo in the trailer and equipment on the trailer.

To put it another way, Safari can move up to 10,000 lbs Gross Combination Weight, which includes the weight of everything going down the road (see chart below).

Light- and heavy-duty trailering equipment packages are available to help you properly outfit your Safari for towing a trailer. See your GMC Truck Dealer for package content, and ask for the 1990 Trailering Guide which gives complete details on requirements.

GROSS COMBINATION WEIGHT RATING (GCWR)* BY ENGINE AND AXLE RATIO

ENGINE/AXLE RATIO	GCWR (lb)
4.3L EFI Vortec V6/3.23	9000
4.3L EFI Vortec V6/3.42	9500
4.3L EFI Vortec V6/3.73* or 4.10*	10,000

* - Includes truck, trailer, passengers, cargo and equipment on truck and trailer.
+ - Requires available HD trailering equipment.

STANDARD & AVAILABLE EQUIPMENT

EXTERIOR EQUIPMENT

MODEL		SAFARI SLX (STD-ZW9)	SAFARI SLE (YCR)	SAFARI SLT (YC7)
AIR DAM	Conventional	S	-	-
	With fog lamps	-	S	S
BLACKOUT PAINT (between windows)		S	S	S
BUMPERS, FRONT AND REAR	Chromed with rub strips and end caps	A	A	A
	Painted	S	-	-
	Painted with rub strips and end caps	-	S	S
CARRIER, WINCH-TYPE SPARE TIRE		S	S	S
FILLER DOOR, REMOTE-CONTROLLED FUEL		S	S	S
GLASS	Complete body	A	A	A
	Rear door swing-out	-	S	S
	Deep tinted	A	A	S
	Tinted	S	S	-
GRILLE AND FRONT LAMP BEZELS	Standard (black)	S	-	-

MODEL		SAFARI SLX (STD-ZW9)	SAFARI SLE (YCR)	SAFARI SLT (YC7)
GRILLE AND FRONT LAMP BEZELS (Cont'd)	Deluxe (black with argent trim)	-	S	S
HEADLAMPS	Halogen-type	S	S	S
HORNS, DUAL ELECTRIC HIGH/LOW-NOTE		S	S	S
MIRRORS, REARVIEW	Painted below eyeline	A	A	A
	Painted conventional	S	S	S
	Electric remote controlled	A	A	A
MOLDINGS	Wide black body side and rear	A ²	S ⁶	S ⁶
	Black wheel opening	A ¹	S	S
WHEELS, CAST ALUMINUM (5)		A	A	A
WHEELS, CONVENTIONAL	Argent with bright hubcaps	S	-	-
WHEELS, RALLY (5)	Includes black hubs and bright trim rings	A	S	S
WINDSHIELD WIPER/WASHER SYSTEM	Intermittent	S	S	S

INTERIOR EQUIPMENT

MODEL		SAFARI SLX (STD-ZW9)	SAFARI SLE (YCR)	SAFARI SLT (YC7)
AIR CONDITIONING	Front	A	A	A
	Front and rear	A	A	A
ARMRESTS, BUCKET SEAT DUAL LH/RH MOVEABLE	With 7-person seating	S	S	S
	With 5- or 8-person seating	A ¹	A ²	S
ARMRESTS, ZP5/ZP8 CENTER BENCH SEAT LH/RH	ZP5: LH on sidewall, RH on seat	S	S	-
	ZP5/ZP8: dual LH/RH on seat	-	-	S
ARMRESTS, FRONT DOOR		S	S	S
ARMRESTS, ZP7/ZP8 REAR BENCH SEAT LH/RH	On rear wheelhousings	S	S	-
	Dual LH/RH on seat	-	-	S
CHIMES, HEADLAMP WARNING		S	S	S
CLOCK, ELECTRIC DIGITAL		S ¹	S ¹	S ¹
COAT HOOKS	Three retractable	S	S	S
COLD CLIMATE PACKAGE		A	A	A
CONSOLE, ROOF		A	A	A
CONVENIENCE TRAY	Instrument panel	S	S	S
	ZP5/ZP7/ZP8 bench seats	-	-	S
CONVENIENCE PACKAGES	1 - Power door locks	A	A	A
	2 - Power door locks/power windows	A	A	A
	3 - Comfortilt steering wheel/electronic speed control	A	A	A
FLOOR AND WHEELHOUSE COVERING	Full-length color-keyed carpet	S	S	S
FLOOR MATS, FRONT & REAR COLOR-KEYED RUBBER		-	S	S
FLOW-THROUGH VENTILATION		S	S	S
HEADLINER, FULL-LENGTH		S	S	S
HEATER AND DEFOGGER, DELUXE		S	S	S
HEATER, REAR		A	A	A
INSTRUMENT CLUSTER	Gage-type with trip odometer	S	S	S
	Electronic gage-type with trip odometer and tachometer	A	A	A
LAMPS	Convenience tray	A ¹	S	S
	Front and rear dome	S	S	S

MODEL		SAFARI SLX (STD-ZW9)	SAFARI SLE (YCR)	SAFARI SLT (YC7)
LAMPS (Cont'd)	Front dome and reading	A ¹	S	S
	Stepwell	A ¹	S	S
	Storage compartment	A ¹	S	S
LAMP SWITCHES, DOME & STEPWELL	All doors	A ¹	S	S
	Front doors only	S	-	-
	Switch override	A ¹	S	S
LIGHTER, CIGARETTE (with ashtray illumination)		S	S	S
MAP POCKETS, FRONT DOOR		S	S	S
MIRROR	Illuminated RH visor	-	S	S
	Rearview	S	S	S
	RH visor	S	-	-
RADIOS, ELECTRONICALLY TUNED (includes seek-scan, digital clock and premium speakers)	AM/FM stereo	S ⁷	S ⁷	S
	AM/FM stereo with stereo cassette	A	A	A
	AM stereo/FM stereo with graphic equalizer & stereo cassette with search-repeat	A	A	A
RECLINER, BUCKET SEAT BACK	With 7-person seating	S	S	S
	With 5- or 8-person seating	A ¹	A	S
SEAT ADJUSTER, POWER (driver seat)		A	A	A
SEATING ARRANGEMENTS	5-person	S	S	S
	7-person	A	A	A
	8-person	A	A	A
STEERING WHEEL	Conventional	S	-	-
	Custom	-	S	-
	Sport	-	-	S
STOP, POSITIVE (MECHANICAL) REAR DOOR		S	S	S
STORAGE COMPARTMENT	Instrument panel	S	S	S
	LH rear sidewall	S	S	S
SUNSHADES, DRIVER & PASSENGER		S	S	S
TRIM PANELS	Standard	S	-	-
	Custom	-	S	-
	Deluxe	-	-	S

S - Standard

A - Available

1 - Requires Custom seat trim

2 - Part of available seat back recliner

3 - Part of available auxiliary lighting package

4 - Integral with standard and available radios

5 - Color-coordinated to elected body color(s)

6 - Includes bright inserts for moldings and front bumper rub strip

7 - Radio delete available. See your GMC Truck Dealer for details

8 - Part of available ZY4/ZY6 two-tone paint

TECHNICAL INFORMATION

DRIVE TYPE	2-WHEEL		ALL-WHEEL	
	Regular	Extended	Regular	Extended
BODY TYPE				
GROSS VEHICLE WEIGHT RATING (lb)	5600	5850 (4)	5800 (5) - 5950	6100
ENGINE/TRANSMISSION AVAILABILITY	(consult your GMC Truck Dealer for available axle ratios)			
4.3L EFI Vortec V6/4-speed automatic overdrive	standard		standard	
4.3L EFI H.O. Vortec V6/4-speed automatic overdrive	available		—	
FRONT SUSPENSION	independent, coil springs		independent, torsion bars	
Capacity (lb)	2700		3050	
Spring capacity (lb) (1)	1350		1525	
Shock absorber diameter (in)	1.00 (2)	1.26	1.26	
Stabilizer bar diameter (in)	1.26		1.18	
REAR SUSPENSION	Salisbury axle, leaf springs		Salisbury axle, leaf springs	
Capacity (lb)	3150		3150	
Spring capacity (lb) (1)	1450	1575	1575	
Shock absorber diameter (in)	1.00 (2)	1.26	1.26	
SERVICE BRAKES	hydraulic, power-assisted front disc/rear drum with four-wheel anti-lock brakes			
PARKING BRAKES	cable to rear wheels			
STEERING	variable ratio, power-assisted, recirculating ball gear			
TIRES	All Season, steel-belted, radial-ply			
Standard	P205/75R15	P215/75R15	P205/75R15 (6)	P215/75R15
Available	(consult your GMC Truck Dealer) (3)			
FUEL TANK CAPACITY (gallons)	27			
BATTERY CCA	630			
GENERATOR AMPS	85 (100 with C60/C69 air or V10 package)			

CCA - Cold Cranking Amps (2) - 1.25-in. units available.
(1) - At ground, each. (3) - Tire chains should not be used with available P245/60R15 tires as they may cause damage to the vehicle.

(4) - Requires heavy-duty power brakes.
(5) - Available with standard 5-passenger seating only.
(6) - P215/70R15 tires required for 5950-lb GVWR.

EXTERIOR COLORS



Available Special Two-Tone Paint (ZY3) for SLT models only. Includes multi-colored decal beltline striping color-keyed to the two-tone combination selected; standard Rally or available aluminum wheels are also color-keyed.

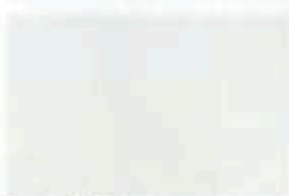


Available Custom Two-Tone Paint (ZY6) for SLX/SLE models. Includes black body side/rear lower moldings on SLX models (standard on SLE models). Available Rally wheels (standard on SLE models) and aluminum wheels are color-keyed.

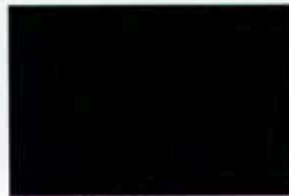


New Available Deluxe Two-Tone Paint (ZY4) for SLX/SLE models. Includes dual-tone beltline decal striping and black body side/rear lower moldings (standard on SLE models). Available Rally wheels (standard on SLE models) and aluminum wheels are color-keyed.

Standard Solid Paint Colors



Ivory White*



Onyx Black*



Sterling Silver (M)*



Smoke Blue (M)



Catalina Blue (M)**



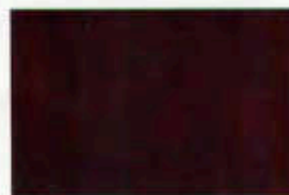
Mojave Beige*



Sunset Gold (M)



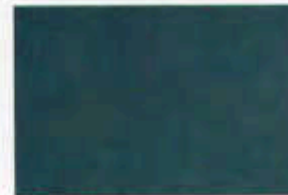
Caramel Brown (M)**



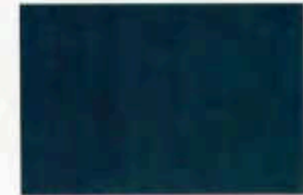
Deep Red (M)*



Burnt Red (M)*



Gray (M)*



Midnight Blue (M)*

*Not available for SLT models.
**Available for SLT models only.

NOTE: (M) = Metallic. Colors shown may vary slightly from actual tones. Ask your GMC Truck Dealer to show you actual paint chips.

OWNER BENEFITS

LOW MAINTENANCE

The technology that goes into Safari Vans has contributed in many ways to reducing the time and effort required for routine service and maintenance. Consider these advanced features:

- Delco Freedom II+ battery never needs refilling with water; has built-in test hydrometer
- Integral voltage regulator is built into Delcotron generator; it's transistorized for reliability
- Starter solenoid is integral; provides positive starter engagement
- Distributor has integral coil, which eliminates separate maintenance
- Large fuse block has tweezer-type fuse removal for easy serviceability
- Mufflers have heavy-gauge outer shell and are aluminized inside and out for added durability
- Engine coolant recovery reservoir collects hot overflow coolant and returns it to radiator automatically when it cools
- Tires have built-in tread wear indicators
- See-through reservoirs for quick checks of engine coolant, windshield washer fluid and brake fluid
- No adjustments for engine idle speed or idle air-fuel mixture — an on-board computer helps tune the engine as you drive
- Audible wear sensors for front disc brake pads for early warning of brake wear
- Front and rear brake designs include a self-adjustment feature
- Single-belt engine accessory drive with automatic belt tensioner never needs adjustment.

VEHICLE WARRANTY



The GM 3-year/50,000 mile BUMPER TO BUMPER PLUS WARRANTY covers repairs for any new GMC Truck, including labor and parts, to correct any defects in material or workmanship occurring during the warranty period. The complete vehicle (except tires, which are covered by their manufacturer) will be covered for 3 years or 50,000 miles, whichever comes first. After the first year or 12,000 miles, there is a \$100 deductible per repair visit. Body sheet metal rust-through from corrosion is covered for 6 years or 100,000 miles whichever comes first. There is no deductible for rust-through repairs. See your GMC Truck dealer for terms of this limited warranty.

DEALER SERVICE



Commitment Plus is one of the most complete joint sales and service customer satisfaction programs available on trucks today (retail sales only). It offers the following benefits:

- A thorough pre-delivery vehicle inspection
 - One full tank of fuel
 - Complimentary 3000-mile maintenance service including oil change and oil filter
- GMC Truck and GMC Truck Dealerships are truly committed to making our trucks easy to live with. Our customers' total satisfaction is indeed our goal!



When your new Safari needs service you can count on the professionals at any of GMC Truck's approximately 2500 Light Duty Truck dealerships. All have qualified mechanics, and many also are equipped to provide GM-CAMS computerized diagnostic services.

FINANCING & LEASING

GMAC

When it comes to financing or leasing a new GM vehicle, General Motors Acceptance Corporation can make things easy. With GMAC, the entire transaction is handled right in the dealer's showroom. Rates are competitive, and terms are tailored to fit your circumstances.

For many people, leasing a new truck through GMAC is an ideal way to suit their transportation needs. Ask your GMC Truck Dealer for details.

IMPORTANT: A WORD ABOUT THIS CATALOG. We have tried to make this catalog as comprehensive and factual as possible. We reserve the right, however, to make changes at any time, without notice, in prices, colors, materials, equipment, specifications, models and availability. Also, tires shown in illustrations are supplied by various manufacturers. Since some information may have been updated since the time of printing, please check with your GMC Truck Dealer for complete details.

A WORD ABOUT ENGINES. GMC Trucks are equipped with engines produced by different operating units of GM, its subsidiaries or suppliers to GM worldwide.

A WORD ABOUT ASSEMBLY OF GMC TRUCKS. GMC Trucks are assembled by different operating units of General Motors, its subsidiaries or suppliers to GM worldwide. GMC Trucks incorporate thousands of components produced by different operating units of GM, its subsidiaries or suppliers to GM worldwide. We sometimes find it necessary to produce GMC Trucks with different or differently sourced components than originally scheduled. All such components have been approved for use in GMC Trucks and will provide the quality performance associated with the GMC Truck name. Since some options may be unavailable when your vehicle is assembled, we suggest you verify that your vehicle includes the equipment you ordered or, if there are changes, that they are acceptable to you.

A WORD ABOUT UPDATED SERVICE INFORMATION.

GMC Truck Division regularly sends its dealers useful service bulletins about GMC Truck products. GMC Truck Division monitors product performance in the field. We then prepare bulletins for servicing our products better. Now you can get these bulletins, too. Ask your dealer. To get ordering information, call toll free 1-800-551-4123.

A WORD ABOUT CORROSION PROTECTION. GMC Trucks are designed and built to resist corrosion. All body sheet metal components are warranted against rust-through corrosion for 6-years/100,000 miles. Application of additional rust inhibiting materials is not required under the corrosion coverage and none is recommended.

GM[®] is a registered trademark of General Motors Corporation. GMC Truck[™], Safari[™] and Commitment Plus/GMC Truck Logo[™] are trademarks of General Motors Corporation.

©1989 General Motors Corporation. All Rights Reserved.

GMC
TRUCK



3275-90 USA
Litho in USA



DECO'S GARAGE