

2009 GMC SAVANA SPECIFICATIONS  
PROFESSIONAL GRADE



## TRIM LEVELS

LS LT

## MECHANICAL

STABILITRAK Vehicle stability enhancement system	S	S
TOW/HAUL MODE SELECTOR	S	S
COLD CLIMATE PACKAGE Engine block heater	A	A
EXTERNAL TRANSMISSION OIL COOLER 2500/3500 Series	A	A

## SEATING

FRONT RECLINING BUCKET SEATS Vinyl	S	—
FRONT BUCKET SEATS Custom cloth	A	S
DRIVER AND FRONT-PASSENGER POWER SEAT ADJUSTER 6-way	—	A
8-PASSENGER SEATING 1500 Series	S	S
8-PASSENGER SEATING 2500/3500 Series	A	A
12-PASSENGER SEATING 2500/3500 Series	S	S
15-PASSENGER SEATING 3500 Series extended wheelbase models only	A	A

## INSTRUMENTATION AND CONTROLS

LEATHER-WRAPPED STEERING WHEEL Including steering-wheel-mounted audio controls	—	A
TILT-WHEEL AND CRUISE CONTROL	A	S
8-POINT DIGITAL COMPASS Located in the Driver Information Center. Requires rear air conditioning.	A	S
OUTSIDE TEMPERATURE DISPLAY Located in the Driver Information Center. On LS trim, requires Chrome Appearance Package.	A	S

## INTERIORS / CONVENIENCE

PADDED DRIVER- AND PASSENGER-SIDE VISORS	S	S
PADDED DRIVER- AND PASSENGER-SIDE VISORS WITH VANITY MIRRORS	A	S
REAR AUXILIARY HEATER LS trim: included with rear air conditioning; standard on 3500 Series extended wheelbase	A	S
DELUXE CONSOLE WITH SWING-OUT STORAGE	A	S
FRONT AIR CONDITIONING	S	S
REAR AIR CONDITIONING	A	S
POWER WINDOWS	A	S
REAR DEFOGGER WINDOW Requires Solar-Ray deep-tinted glass	A	A
REMOTE KEYLESS ENTRY	—	S

## ENTERTAINMENT / COMMUNICATION / NAVIGATION

AM/FM STEREO With seek-and-scan, digital clock and 2 front-door speakers	S	S
AM/FM STEREO With CD player	A	A
AM/FM STEREO With CD/MP3 player and 6 speakers. On LS trim, requires power windows and door locks.	A	A
AM/FM STEREO With MP3-compatible 6-disc in-dash CD changer and 6 speakers. On LS trim, requires power windows and door locks.	A	A

## EXTERIOR STYLING AND FUNCTIONALITY

DAYTIME RUNNING LAMPS	S	S
SWING-OUT PASSENGER-SIDE DOORS	S	S
OUTSIDE REARVIEW MIRRORS Foldaway	S	S
POWER OUTSIDE REARVIEW MIRRORS Heated, black	A	A
POWER OUTSIDE REARVIEW MIRRORS Heated, black, with turn signals in glass	A	A

## TRIM LEVELS

LS LT

FRONT AND REAR BUMPERS Black	S	—
FRONT AND REAR BUMPERS Chrome	A	S
CHROME APPEARANCE PACKAGE	A	S
GRILLE Chrome, with dual halogen composite headlamps	A	S
SOLAR-RAY DEEP-TINTED WINDOWS	S	S
SLIDING PASSENGER-SIDE DOOR On LS trim, requires rear air conditioning	A	A

## SAFETY AND SECURITY

SIDE STEEL DOOR BEAMS	S	S
HEAD CURTAIN SIDE-IMPACT AIR BAGS*	S	S
FRONTAL AIR BAGS* For driver and passenger	S	S
TIRE PRESSURE MONITORING SYSTEM (Does not monitor spare tire)	S	S
LATCH CHILD SEAT ANCHOR SYSTEM	S	S
PASS-KEY III THEFT-DETERRENT SYSTEM	S	S
POWER DOOR LOCKS With lockout protection	A	S
ENHANCED-TECHNOLOGY GLASS Rearmost side windows; 12- and 15-passenger models only	S	S

A \_ AVAILABLE S \_ STANDARD — \_ NOT AVAILABLE

ENGINE SPECIFICATIONS	VORTEC 5.3L V-8	VORTEC 6.0L V-8
SAE net horsepower @ rpm	301 @ 5200	321 @ 4600
SAE net torque @ rpm (lb-ft)	325 @ 4500	371 @ 4400

ENGINE / MODEL AVAILABILITY	1500 SERIES	2500/3500 SERIES
Series / Drive Type	2WD AWD	2WD
Vortec 5.3L V-8	S S	—
Vortec 5.3L V-8 E85 (ethanol-capable)**	A A	—
Vortec 6.0L V-8	— —	S

STANDARD TECHNICAL DATA	1500 SERIES	2500/3500 SERIES
Gross Vehicle Weight Rating (lbs) <sup>†</sup>	7300 (RWD)/ 7300 (AWD)	8600/9600

Front Suspension (RWD)	Independent coil springs for all series	
Front Suspension (AWD)	Independent torsion bar for all series	
Front Axle capacity (lbs)	3600	4100/4300
Rear Suspension	Multileaf springs for all series	
Rear Axle capacity (lbs)	4000	5360/6084
Brakes	4-wheel disc with antilock system	

Transmission: Electronic 4-speed automatic with overdrive and Tow/Haul mode; heavy-duty for 2500/3500 Series

MAX. TRAILER WEIGHT IN LBS <sup>††</sup>	AXLE RATIO	VORTEC 5.3L V-8	VORTEC 6.0L V-8
1500 (RWD)	3.73	6200	—
1500 (AWD)	3.73	6000	—
2500	3.73	—	7600
3500 (regular wheelbase)	3.73	—	7600
3500 (extended wheelbase)	3.73	—	7300

\*Always use safety belts and the correct restraint for your child's age and size. Even in vehicles equipped with the Passenger Sensing System, children are safer when properly secured in a rear seat in an appropriate infant, child or booster seat. Never place a rear-facing infant restraint in the front seat of any vehicle equipped with a passenger air bag. See the Owner's Manual and child safety seat instructions for more safety information. \*\*E85 is 85 percent ethanol and 15 percent gasoline. Visit gm.com/e85 to see if there is an E85 station near you. †When properly equipped; includes weight of vehicle, passengers, cargo and equipment. ††Maximum trailer weight ratings are calculated assuming a base vehicle, except for any option(s) necessary to achieve the rating, plus driver. The weight of other optional equipment, passengers and cargo will reduce the maximum trailer weight your vehicle can tow. See your GMC dealer for additional details. See the GMC Trailering Guide for further details. ‡Use only GM-approved wheel and tire combinations. For important tire and wheel information, visit gmaccessorieszone.com.

EXTERIOR COLOR



**SUMMIT WHITE**



**ONYX BLACK**



**FIRE RED**



**SILVER BIRCH METALLIC** EXTRA-COST COLOR



**SAND BEIGE METALLIC** EXTRA-COST COLOR



**STEEL GRAY METALLIC** EXTRA-COST COLOR



**SPORT RED METALLIC** EXTRA-COST COLOR

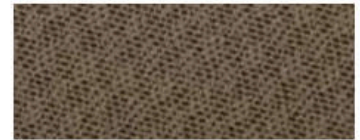


**POLO GREEN METALLIC** EXTRA-COST COLOR



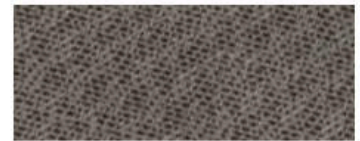
**DEEP BLUE METALLIC** EXTRA-COST COLOR

INTERIOR TRIM / CLOTH



**NEUTRAL**

Not available with Silver Birch Metallic or Steel Gray Metallic



**MEDIUM PEWTER**

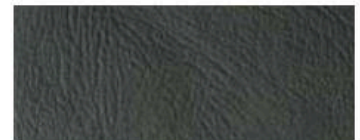
Not available with Sand Beige Metallic

INTERIOR TRIM / VINYL



**NEUTRAL**

Not available with Silver Birch Metallic



**MEDIUM PEWTER**

Not available with Sand Beige Metallic

SAVANA WHEELS\*

1500 SERIES WHEELS



**NX7**

- ▣ 17" 6-LUG GRAY-PAINTED STEEL
- ▣ STANDARD: 1500 SERIES LS TRIM



**P03**

- ▣ 17" 6-LUG GRAY-PAINTED STEEL WITH CHROME CENTER CAP
- ▣ STANDARD: 1500 SERIES LT TRIM
- ▣ AVAILABLE: 1500 SERIES LS TRIM



**PY9**

- ▣ 17" 6-LUG CHROME-STYLED STEEL
- ▣ AVAILABLE: 1500 SERIES



**N88**

- ▣ 17" 6-LUG POLISHED ALUMINUM SPORT
- ▣ AVAILABLE: 1500 SERIES

2500 / 3500 SERIES WHEELS



**QB5**

- ▣ 16" 8-LUG GRAY-PAINTED STEEL
- ▣ STANDARD: 2500/3500 SERIES LS OR LT TRIM



**P03**

- ▣ 16" 8-LUG GRAY-PAINTED STEEL WITH CHROME CENTER CAP
- ▣ AVAILABLE: 2500/3500 SERIES LS OR LT TRIM



**THREE POWERFUL BRANDS UNDER ONE ROOF**

BUICK. GMC. PONTIAC. THREE DISTINCT BRANDS COMING TOGETHER TO CREATE THE ULTIMATE COLLECTION OF LUXURY, CAPABILITY AND PERFORMANCE. ONE SHOWROOM OFFERING AN UNPRECEDENTED CHOICE OF CARS, TRUCKS, CROSSOVERS AND SUVs.

—

ENTER AND DISCOVER WHAT IT MEANS TO DRIVE BEAUTIFUL IN THE BUICK LUCERNE, A MORE INTELLIGENT LUXURY SEDAN. LEARN THE REWARD FOR NEVER SAYING NEVER: THE GMC SAVANA, THE SAFEST FULL-SIZE VAN WE'VE EVER PRODUCED. OR REKINDLE YOUR LOVE FOR CAR BEHIND THE WHEEL OF THE FIRST-EVER PONTIAC G8 SEDAN, A GAME-CHANGING COMBINATION OF POWER AND PERFORMANCE.

—

EACH BRAND HAS A UNIQUE HERITAGE AND UNWAVERING PURPOSE. TOGETHER, THEY HAVE A SINGULAR FOCUS: TO CREATE THE ULTIMATE DESTINATION TO FIND YOUR PERFECT VEHICLE NOW, AND IN THE FUTURE.

—

—