

2010 GMC SAVANA



---

SAVANA SAFETY FIRST AND LAST

---

The Savana passenger van is a perfect example of what can result from a determined refusal to leave well enough alone. Available in eight-, 12- and 15-passenger models, the 2010 Savana has been designed and refined with safety as the constant goal. Our electronic stability control system, StabiliTrak, and traction control are standard on all models. Savana 1500 Series models are available with an innovative full-time all-wheel-drive system—the first of its kind in a full-size van.

New for 2010, a smooth-shifting 6-speed automatic on all 2500 Series and 3500 Series models includes Tow/Haul mode with automatic grade braking to help you manage long, steep descents while trailering. Also new, an available remote start system for all Savana models includes a panic button to help take the anxiety out of dark parking garages. Savana: It's the kind of thing that happens when you engineer to exceed expectations.





---

AVAILABLE  
FULL-TIME AWD

---

E85 FLEXFUEL<sup>1</sup>  
STANDARD ON ALL MODELS

---

<sup>1</sup>E85 is 85 percent ethanol and 15 percent gasoline. Visit [gm.com/e85](http://gm.com/e85) to see if there is an E85 station near you.



3500 SERIES MODELS  
UP TO 15-PASSENGER SEATING

1500 SERIES MODELS  
8-PASSENGER SEATING

AVAILABLE LEATHER-WRAPPED  
STEERING WHEEL INCLUDES  
STEERING-WHEEL-MOUNTED  
AUDIO CONTROLS

#### COMFORT, CONVENIENCE AND STYLE

The centerpiece of the Savana interior is a stylish, contemporary instrument panel. A Tilt-Wheel adjustable steering column and cruise control are standard with LT trim, which also includes comfortable front bucket seats with custom cloth and inboard armrests (available with LS trim).

And six-way power adjustability for the driver and front passenger seats is available with LT trim. Savana offers a variety of advanced audio systems, including an available AM/FM stereo with CD/MP3 player or an available AM/FM stereo with MP3-compatible six-disc in-dash CD changer.\*

Both units feature two front-door speakers, two rear-door speakers and two more speakers in the sound bar — for the enjoyment of all passengers. For the comfort of passengers in the rear, extended wheelbase 3500 Series vans and models with LT trim include rear air conditioning.



SAVANA 2500 SERIES LS IN MEDIUM PEWTER CLOTH SHOWN WITH AVAILABLE EQUIPMENT

5★

2010 NHTSA 5-STAR  
FRONTAL CRASH-TEST  
RATING FOR 1500 SERIES;  
HIGHEST POSSIBLE<sup>1</sup>

STABILITRAK AND  
TRACTION CONTROL

ENGINEERING EXCELLENCE, FOR SAFETY'S SAKE

Savana surrounds you with safety, before and even during a collision. It incorporates an extensive set of crash-avoidance and crash-protection features, including a robust steel safety cage, four air bags,<sup>2</sup> four-wheel

antilock brakes, electronic stability enhancement, traction control and more. In fact, the 2010 Savana 1500 Series models earned the prestigious five-star frontal crash safety rating in U.S. Government safety testing.<sup>3</sup>

A FULL COMPLEMENT OF AIR BAGS<sup>2</sup>

A. In addition to driver and right-front passenger frontal air bags, head curtain side air bags for the first, second and third rows are standard on all Savana models. It takes only milliseconds for the bags to deploy, and the air bags can stay inflated for up to five seconds to help reduce the risk of injury in the unlikely event of a rollover.

STEEL SAFETY CAGE

REINFORCING THE FLOOR, BODY SILLS AND ROOF PILLARS, THE SAFETY CAGE SURROUNDS AND HELPS MAINTAIN PASSENGER COMPARTMENT SPACE.

THREE-POINT SAFETY BELTS/LATCH SYSTEM

STANDARD IN EVERY SEATING POSITION, A UNIQUE LATCH HARNESS SYSTEM ALSO MAKES IT EASY TO INSTALL CHILD SAFETY SEATS IN DIFFERENT POSITIONS THROUGHOUT THE VAN.

ANTILOCK BRAKE SYSTEM

SAVANA'S FOUR-WHEEL ANTILOCK BRAKE SYSTEM HELPS THE DRIVER MAINTAIN STEERING CONTROL DURING HARD-BRAKING SITUATIONS.



<sup>1</sup>Government star ratings are part of the National Highway Traffic Safety Administration's (NHTSA's) New Car Assessment Program ([www.safercar.gov](http://www.safercar.gov)). <sup>2</sup>Be sure every occupant is properly restrained. Head curtain air bags are designed to help reduce the risk of head and neck injuries to front- and rear-seat occupants on the rear side of certain side-impact collisions. Always use safety belts and the correct restraint for your child's age and size. Even in vehicles equipped with the Passenger Sensing System, children are safer when properly secured in a rear seat in the appropriate infant, child or booster seat. Never place a rear-facing infant restraint in the front seat of any vehicle equipped with a passenger air bag. See your Owner's Manual and child safety seat instructions for more safety information. <sup>3</sup>Not available on eight-passenger models. <sup>4</sup>Not available on 2500 Series and 3500 Series models.

#### STANDARD STABILITRAK AND TRACTION CONTROL

**B** The StabiliTrak electronic stability enhancement system is a remarkable engineering system that helps your vehicle respond more accurately to your steering commands. StabiliTrak uses sensors to read the position of your steering wheel, vehicle speed, brake pressure, lateral acceleration and turning rate. These sensors feed data to an onboard computer that analyzes the situation within

milliseconds and makes a decision. If it determines that your van is not responding adequately to your steering input, the computer reduces engine torque and applies brake pressure to any individual wheel to help you keep on track. The system includes Proactive Roll Avoidance technology, which enhances your ability to maintain steering control and reduce the risk of a rollover,

#### TIRE PRESSURE MONITORING

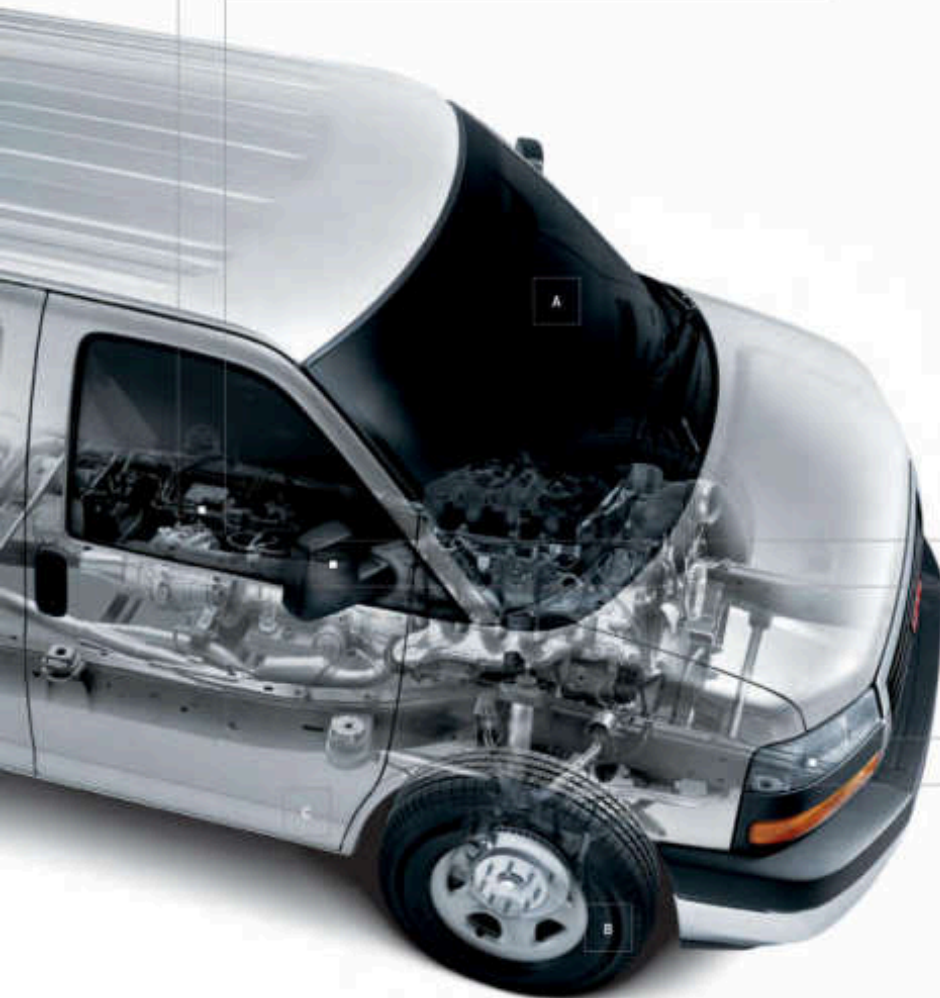
**C** Savana's standard tire pressure monitoring system provides peace of mind as you drive. If a tire falls below a specific pressure, the system provides an alert on the instrument panel that indicates the pressure and identifies which tire is involved, so you can take the appropriate action (does not monitor spare tire).

#### ENHANCED-TECHNOLOGY GLASS (ETG)

**D** Standard in the rearmost side windows of 12- and 15-passenger models,<sup>3</sup> ETG is part of the overall occupant protection system on Savana passenger vans. ETG may help to keep passengers sitting next to these fixed windows from being ejected through the glass in some, but not in all crashes.<sup>2</sup>

#### FRONT PASSENGER SENSING SYSTEM\*

STANDARD ON 1500 SERIES MODELS, THIS FEATURE DEACTIVATES AIR BAGS FOR SMALLER PASSENGERS, PREVENTING AIR-BAG-INDUCED INJURIES.<sup>2</sup>



#### SIDE-VIEW FLAT/CONVEX MIRRORS

LARGE FLAT/CONVEX MIRRORS ON BOTH SIDES OF THE VEHICLE OFFER DRIVERS A BETTER REAR FIELD OF VIEW.

#### DAYTIME RUNNING LAMPS

AUTOMATICALLY TURN ON UPON IGNITION FOR GREATER VISIBILITY OF YOUR VEHICLE BY OTHERS.

**SAVANA / STANDARD AND AVAILABLE FEATURES**

 TRIM LEVELS LS LT
**MECHANICAL**

<b>STABILITRAK</b> Vehicle stability enhancement system	S	S
<b>TOW/HAUL MODE SELECTOR</b>	S	S
<b>COLD CLIMATE PACKAGE</b> Engine block heater	A	A
<b>TRANSMISSION OIL COOLER</b> External; 2500/3500 Series	S	S

**SEATING**

<b>FRONT RECLINING BUCKET SEATS</b> With vinyl trim	S	—
With custom cloth trim	A	S
<b>POWER SEAT ADJUSTER</b> Driver and front passenger, 6-way	—	A
<b>SEATING CONFIGURATION</b> 8-passenger, 1500 Series	S	S
8-passenger, 2500/3500 Series	A	A
12-passenger, 2500/3500 Series	S	S
15-passenger, 3500 Series extended wheelbase models only	A	A

**INSTRUMENTATION AND CONTROLS**

<b>STEERING WHEEL</b> Leather-wrapped; includes steering-wheel-mounted audio controls	A	A
Tilt-wheel adjustment; includes cruise control	A	S
<b>8-POINT DIGITAL COMPASS</b> Located in the Driver Information Center. Requires rear air conditioning.	A	S
<b>OUTSIDE TEMPERATURE DISPLAY</b> Located in the Driver Information Center. On LS trim, requires Chrome Appearance Package.	A	S

**INTERIORS/CONVENIENCE**

<b>PADDED VISORS</b> Driver and passenger side	S	S
With vanity mirrors	A	S
<b>DELUXE CONSOLE</b> With swing-out storage	A	S
<b>AIR CONDITIONING</b> Front	S	S
Rear	A	S
<b>REAR AUXILIARY HEATER</b> LS trim; included with rear air conditioning; standard on 3500 Series extended wheelbase	A	S
<b>REAR DEFOGGER WINDOW</b>	A	A
<b>POWER WINDOWS</b>	A	S
<b>REMOTE KEYLESS ENTRY</b>	A	S
<b>REMOTE START</b>	A	A

**ENTERTAINMENT/COMMUNICATION/NAVIGATION**

<b>AM/FM STEREO</b> With seek-and-scan, digital clock and 2 front-door speakers	S	S
With CD player	A	A
With CD/MP3 player and 6 speakers. On LS trim, requires power windows and door locks.	A	A
With MP3-compatible 6-disc in-dash CD changer and 6 speakers. On LS trim, requires power windows and door locks.	A	A

**EXTERIOR STYLING AND FUNCTIONALITY**

<b>DAYTIME RUNNING LAMPS</b>	S	S
<b>SWING-OUT PASSENGER-SIDE DOORS</b>	S	S
<b>OUTSIDE REARVIEW MIRRORS</b> Manual foldaway	S	S
Power-operated, heated, black	A	A
Power-operated, heated, black, with turn signals in glass	A	A

 TRIM LEVELS S LT
**EXTERIOR STYLING AND FUNCTIONALITY (CONTINUED)**

<b>FRONT AND REAR BUMPERS</b> Black	S	—
<b>CHROME APPEARANCE PACKAGE</b> Chrome front and rear bumpers and grille; includes halogen composite headlamps	A	S
<b>SOLAR-RAY DEEP-TINTED WINDOWS</b>	S	S
<b>SLIDING PASSENGER-SIDE DOOR</b> On LS trim, requires rear air conditioning	A	A

**SAFETY AND SECURITY**

<b>SIDE STEEL DOOR BEAMS</b>	S	S
<b>AIR BAGS</b> <sup>1</sup> Frontal, for driver and passenger	S	S
Head-curtain side-impact, for first, second and third row	S	S
<b>TIRE PRESSURE MONITORING SYSTEM</b> (Does not monitor spare tire)	S	S
<b>LATCH CHILD SEAT ANCHOR SYSTEM</b>	S	S
<b>PASS-KEY III THEFT-DETERRENT SYSTEM</b>	S	S
<b>POWER DOOR LOCKS</b> With lockout protection	A	S
<b>ENHANCED-TECHNOLOGY GLASS</b> Rearmost side windows; 12- and 15-passenger models only	S	S

A, AVAILABLE S, STANDARD —, NOT AVAILABLE

**ENGINE SPECIFICATIONS**

	VORTEC 5.3L V-8	VORTEC 6.0L V-8
SAE net horsepower @ rpm	310 @ 5200	323 @ 4600
SAE net torque @ rpm (lb-ft)	334 @ 4500	373 @ 4400

ENGINE/MODEL AVAILABILITY	1500 SERIES	2500/3500 SERIES
Series / Drive Type	RWD AWD	RWD
Vortec 5.3L V-8 E85 (ethanol-capable) <sup>2</sup>	S S	—
Vortec 6.0L V-8 E85 (ethanol-capable) <sup>2</sup>	— —	S

STANDARD TECHNICAL DATA	1500 SERIES	2500/3500 SERIES
Gross Vehicle Weight Rating (lbs) <sup>3</sup>	7300 (RWD)/ 7300 (AWD)	8600/9600
Front Suspension (RWD)	Independent coil springs—all series	
Front Suspension (AWD)	Independent torsion bar—all series	
Front Axle capacity (lbs)	3600	4100/4300
Rear Suspension	Multileaf springs—all series	
Rear Axle capacity (lbs)	4000	5360/6084
Brakes	4-wheel disc with antilock system	
Transmission: Electronic automatic with overdrive, Tow/Haul mode	4-speed	6-speed heavy-duty with internal oil cooler

MAX. TRAILER WEIGHT IN LBS <sup>4</sup>	AXLE RATIO	VORTEC 5.3L V-8	VORTEC 6.0L V-8
1500 (RWD)	3.73	6200	—
1500 (AWD)	3.73	6000	—
2500	3.42	—	9600
3500 (regular wheelbase)	3.42	—	9700
3500 (extended wheelbase)	3.42	—	9300

<sup>1</sup>Always use safety belts and the correct restraint for your child's age and size. Even in vehicles equipped with the Passenger Sensing System, children are safer when properly secured in a rear seat in the appropriate infant, child or booster seat. Never place a rear-facing infant restraint in the front seat of any vehicle equipped with a passenger air bag. See the Owner's Manual and child safety seat instructions for more safety information. <sup>2</sup>E85 is 85 percent ethanol and 15 percent gasoline. Visit [gm.com/e85](http://gm.com/e85) to see if there is an E85 station near you. <sup>3</sup>When properly equipped, includes weight of vehicle, passengers, cargo and equipment. <sup>4</sup>Maximum trailer weight ratings are calculated assuming a base vehicle, except for any optional(s) necessary to achieve the rating, plus driver. The weight of other optional equipment, passengers and cargo will reduce the maximum trailer weight your vehicle can tow. See your GMC dealer for additional details. See the GMC Trailering Guide for further details. <sup>5</sup>The only GM-approved wheel and tire combinations. For important tire and wheel information, visit [gmaccessories.com](http://gmaccessories.com).

SAVANA/COLOR AND TRIM/WHEELS

EXTERIOR COLOR



SUMMIT WHITE



ONYX BLACK



FIRE RED



PURE SILVER METALLIC EXTRA-COST COLOR



SAND BEIGE METALLIC EXTRA-COST COLOR



STEEL GRAY METALLIC EXTRA-COST COLOR



POLO GREEN METALLIC EXTRA-COST COLOR



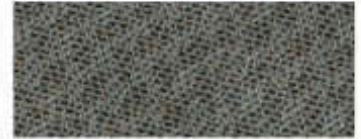
DEEP BLUE METALLIC EXTRA-COST COLOR

INTERIOR TRIM / CLOTH



NEUTRAL

Not available with Pure Silver Metallic or Steel Gray Metallic



MEDIUM PEWTER

Not available with Sand Beige Metallic

INTERIOR TRIM / VINYL



NEUTRAL

Not available with Pure Silver Metallic or Steel Gray Metallic



MEDIUM PEWTER

Not available with Sand Beige Metallic

SAVANA WHEELS\*

1500 SERIES WHEELS



NX7

17" 6-LUG GRAY-PAINTED STEEL  
STANDARD: 1500 SERIES LS TRIM



N88

17" 6-LUG POLISHED ALUMINUM SPORT  
AVAILABLE: 1500 SERIES



P03

17" 6-LUG GRAY-PAINTED STEEL WITH CHROME CENTER CAP  
STANDARD: 1500 SERIES LT TRIM  
AVAILABLE: 1500 SERIES LS TRIM

2500/3500 SERIES WHEELS



Q85

16" 8-LUG GRAY-PAINTED STEEL  
STANDARD: 2500/3500 SERIES LS TRIM  
AVAILABLE: 2500/3500 SERIES LT TRIM



P03

16" 8-LUG GRAY-PAINTED STEEL WITH CHROME CENTER CAP  
STANDARD: 2500/3500 SERIES LT TRIM  
AVAILABLE: 2500/3500 SERIES LS TRIM



08

SAVANA 1500 SERIES IN PURE SILVER METALLIC (EXTRA-COST COLOR) SHOWN WITH AVAILABLE EQUIPMENT

**COMMITMENT PLUS**

From the owner orientation—and full tank of gas—you receive when you take possession of your Savana to the **24-Hour Roadside Assistance, Courtesy Transportation and Travel Benefits**, Commitment Plus is a portfolio of owner privileges that lasts throughout your warranty. For expert product information, Roadside Assistance or other services, call 1-800-GMC-8782.

**TRAVEL BENEFITS AND ROADSIDE ASSISTANCE** Available around the clock: trip routing service, a program for reimbursement for trip interruption due to necessary warranty repairs, towing, flat tire change, jump-starts and more for 5 years or 100,000 miles (whichever comes first).

**COURTESY TRANSPORTATION** Available at participating dealers: shuttle service, reimbursement of certain public transportation or fuel expenses for overnight warranty repairs, and courtesy rental for overnight work repairs. See your dealer for details.

**GMC OWNER CENTER** A complimentary, one-stop resource to enhance your GMC ownership experience. It's easy to sign up. Just go to [gm.com/gmownercenter/gmc](http://gm.com/gmownercenter/gmc).

**BEST COVERAGE IN AMERICA** Savana offers the best coverage in America. That means you get all the benefits of Commitment Plus, including Roadside Assistance and Courtesy Transportation. In addition, you get a new level of confidence with GM's 5-Year/100,000-Mile Transferable Powertrain Limited Warranty, whichever comes first. See dealer for limited warranty details.

**GMC | Goodwrench** **GOODWRENCH SERVICE** To help your Savana live up to its performance promise, GMC Goodwrench Service—found exclusively at your GMC dealer—is there. With all the engineering excellence in Savana, GM-trained Goodwrench technicians have the expertise to care for all of it.

**A NOTE ON CHILD SAFETY** Always use safety belts and the correct restraint for your child's age and size. Even in vehicles equipped with the Passenger Sensing System, children are safer when properly secured in a rear seat in the appropriate infant, child or booster seat. Never place a rear-facing infant restraint in the front seat of any vehicle equipped with a passenger air bag. See the Owner's Manual and child safety seat instructions for more safety information.

**TRAILERING WITH YOUR SAVANA** Please carefully review the Owner's Manual for important safety information about trailering with your vehicle.

**IMPORTANT WORDS ABOUT THIS CATALOG** We have tried to make this catalog comprehensive and factual. We reserve the right, however, to make changes at any time, without notice, in prices, colors, materials, equipment, specifications, models and availability. Specifications, dimensions, measurements, ratings and other numbers in this catalog and other printed materials provided at the dealership or affixed to vehicles are approximates based upon design and engineering drawings and prototypes and laboratory tests. Your vehicle may differ due to variations in manufacture and equipment. Since some information may have been updated since the time of printing, please check with your GMC dealer for complete details. GMC reserves the right to lengthen or shorten the model year for any product for any reason, or to start and end model years at different times.

**GMC.COM** See more Savana on our Web site: [gmc.com/savana](http://gmc.com/savana). More photos and information; hot links to related subjects; convenient dealer locator; pricing guide, spec out your own vehicle. Or call 1-800-GMC-8782.

**AN IMPORTANT NOTE ABOUT CONVERSION VANS, ALTERATIONS AND WARRANTIES**

Installations or alterations to the original equipment vehicle (or chassis) as distributed by General Motors are not covered by the General Motors New-Vehicle Limited Warranty. The special body company, assembler, equipment installer or upfitter is solely responsible for warranties on the body or equipment and any alterations (or any effect of the alterations) to any of the parts, components, systems or assemblies installed by GM. General Motors is not responsible for the safety or quality of design features, materials or workmanship of any alterations by such suppliers.

**NEW-VEHICLE LIMITED WARRANTY** All GMC light-duty vehicles come with a fully transferable, no-deductible 5-year/100,000-mile (whichever comes first) Powertrain Limited Warranty. GM vehicles registered in the U.S.A. are also covered bumper-to-bumper for 3 years or 36,000 miles (whichever comes first). Coverage includes tires and towing to your nearest GMC dealership. Repairs will be made to correct any vehicle defect and most warranty repairs will be made at no charge. In addition, rust-through corrosion will be covered for 6 years or 100,000 miles (whichever comes first). See dealer for details.

**ENGINES** GMC products are equipped with engines produced by GM Powertrain or other suppliers to GM worldwide. The engines in GMC products may also be used in other GM makes and models.

**ASSEMBLY** GMC vehicles and their components are assembled or produced by different operating units of General Motors, its subsidiaries or suppliers to GM worldwide. We sometimes find it necessary to produce GMC vehicles with different or differently sourced components than originally scheduled. Since some options may be unavailable when your vehicle is assembled, we suggest that you verify that your vehicle includes the equipment you ordered or, if there are changes, that they are acceptable to you.

**GMMOBILITY.COM** (1-800-323-9935) GM Mobility offers financial assistance for eligible adaptive equipment to make automotive travel easier for persons with disabilities or special transportation needs. To learn more about special GM Mobility offers, visit [gmmobility.com](http://gmmobility.com).

**GMCARDMEMBERSERVICES.COM** Did you know about the family of reward credit cards that can help you get a great deal on a new GM car, light-duty truck, SUV or crossover? With a GM reward card, you accrue earnings on every credit card purchase to use toward the purchase or lease of an eligible new GM vehicle. With three cards to choose from, you're sure to find one that suits you.

©2009 General Motors. All rights reserved. GM, the GM logo, GMC, the GMC logo, the slogans, emblems, vehicle model names, vehicle body designs and other marks appearing in this catalog are the trademarks and/or service marks of General Motors, its subsidiaries, affiliates or licensors.



WE ENGINEER PRACTICAL WISDOM AND REMARKABLE CAPABILITY INTO EVERYTHING WE DO — FROM OUR RENOWNED LINE OF SIERRA PICKUPS AND THE ACADIA, OUR PREMIUM MIDSIZE CROSSOVER, TO OUR FAMILY OF FULL-SIZE HYBRID SUVs AND PICKUPS NO COMPETITOR CAN OFFER: SIERRA HYBRID, YUKON HYBRID AND YUKON DENALI HYBRID.

ADD OUR POWERFUL ENGINES, COMPREHENSIVE SAFETY FEATURES AND THOUGHTFUL INNOVATIONS, AND YOU GET A COMBINATION OF PERFORMANCE, TECHNOLOGY AND CONVENIENCE YOU MIGHT NOT EXPECT IN ANY SINGLE VEHICLE. ADD TO THAT THE NEWEST ADDITION TO OUR LINEUP, THE GMC TERRAIN, AND YOU GET A SMALL CROSSOVER WITH THE STYLE AND FUNCTIONALITY OF AN SUV WITH A BEST-IN-CLASS 32 EPA-ESTIMATED HIGHWAY MPG.\*

THAT'S WHAT HAPPENS WHEN YOUR ENGINEERS NEVER SAY NEVER. THAT'S GMC. WE ARE PROFESSIONAL GRADE.

**GMC**

[GMC.COM](http://GMC.COM)

10 GMC SUV RC-25. Litho in U.S.A. \*Based on Terrain FWD with 2.4L I-4 DI engine and 2008 GM Compact SUV-Crossover segment. Excludes other GM vehicles.