



2011 GMC SAVANA

THE GMC SAVANA IS THE FULL-SIZE VAN ENGINEERED TO KEEP YOU A STEP AHEAD IN A FAST-CHANGING WORLD. IT GIVES YOU THE UNCOMPROMISED STRENGTH AND CAPABILITY YOU EXPECT, WITH THE INNOVATIONS YOU NEED TO KEEP PACE WITH TOMORROW. FROM THE MOST POWERFUL DIESEL AVAILABLE IN ITS CLASS, TO AVAILABLE DEALER-INSTALLED WIFI CONNECTIVITY,¹ WE NEVER STOP PUSHING SAVANA'S TECHNOLOGY OR CAPABILITY. BECAUSE WE KNOW THAT WHEN A CHALLENGE ARISES, YOU NEED TO BE READY. IT'S THE THINKING AND THE CAPABILITY YOU EXPECT FROM ENGINEERS WHO NEVER SAY NEVER.

GMC. WE ARE PROFESSIONAL GRADE.



Weekly rates apply. Visit autosemobile.com for coverage map and details.

This catalog shows many vehicles that have been altered or equipped with equipment, bodies or components supplied to General Motors by an independent supplier. GM is not responsible for the safety or quality of design features, materials or workmanship of any alterations by such a supplier. See page 18 for more information about alterations and warranties.



BY PROFESSIONALS. FOR PROFESSIONALS.



SAVANA 1500 SERIES LT PASSENGER VAN IN PURE SILVER METALLIC SHOWN WITH AVAILABLE EQUIPMENT

INNOVATION

ENGINEERED FOR ADVANCEMENT.

GMC Savana is the product of our continuous desire to innovate. From a Duramax Diesel V-8 engine to the confidence of StabiliTrak, Savana is engineered to exceed expectations. This makes it the perfect choice for people focused on tomorrow.

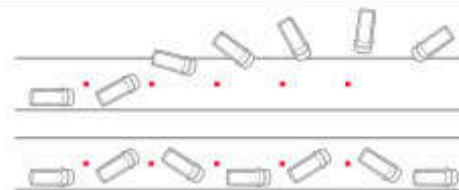
DURAMAX DIESEL POWER

When you need maximum torque for heavy jobs, the Savana 3500 Series offers an available Duramax Diesel 6.6L V-8 Turbo engine, the most powerful diesel in its class. Rated at 260 horsepower and 525 lb-ft of torque, this powerful and proven engine helps to give the Savana a conventional trailering rating of 10,000 lbs¹ and payload capability of up to 3438 lbs.²

AVAILABLE ALL-WHEEL DRIVE

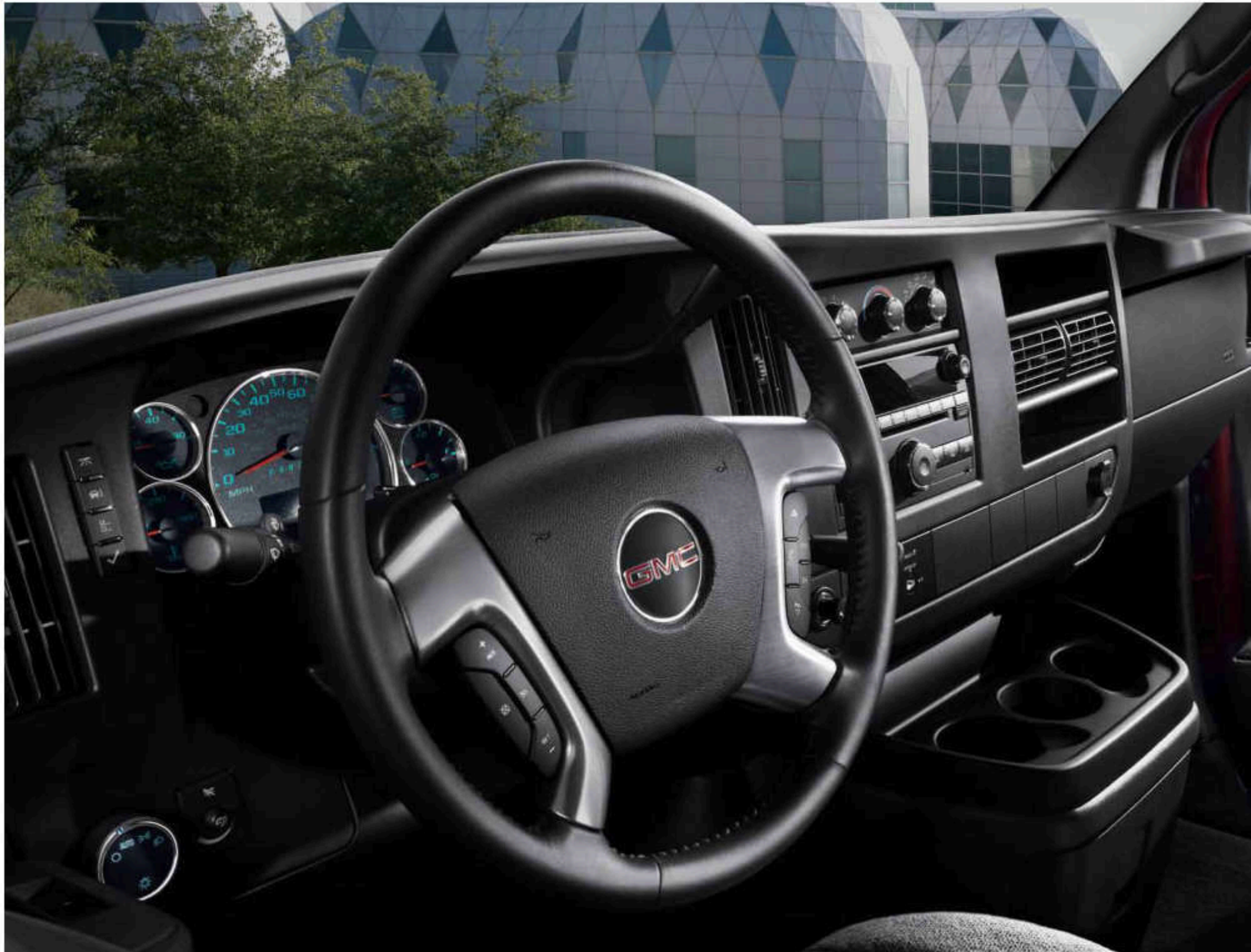
Savana 1500 Series models are available with an innovative full-time All-Wheel-Drive (AWD) system—the first of its kind in a full-size van. It constantly monitors and adjusts torque quickly and seamlessly between the front and rear wheels to help you maintain control.

FIGURE 1: STABILITRAK STABILITY CONTROL



Every Savana features the StabiliTrak stability control system, a remarkable engineering achievement that helps your vehicle respond to your steering commands. StabiliTrak uses sensors to read the position of your steering wheel, vehicle speed, brake pressure, lateral acceleration and turning rate. If it senses your Savana is not responding adequately to your steering input, it can adjust engine torque and apply brake pressure to any individual wheel to help you keep on track. This system also includes Proactive Roll Avoidance, which enhances your ability to maintain steering control and reduces the risk of rollover.

¹Maximum trailer weight ratings are calculated assuming a base vehicle, except for any option(s) necessary to achieve the rating, plus driver. The weight of other optional equipment, passengers and cargo will reduce the maximum trailer weight your vehicle can tow. See your GMC dealer for additional details. ²Maximum payload capacity includes weight of the driver, passengers, optional equipment and cargo.





SAVANA 2500 SERIES LS MEDIUM PEWTER INTERIOR SHOWN WITH AVAILABLE EQUIPMENT

TECHNOLOGY

MOBILE HOT SPOT.

Savana is engineered with communication technology that today's world demands. When equipped with available USB port¹ and BluetoothSM wireless capability as well as dealer-installed WiFi,² Savana gives you the foundation for a fully connected mobile office that can help you make the most of every opportunity.

CRAFTED FOR CONTROL

Savana's interior puts a premium on convenience and control. The LS trim (shown left) includes a Tilt-Wheel adjustable steering column and cruise control and can be equipped with an available leather-wrapped steering wheel. This model also includes comfortable and supportive front bucket seats with custom cloth and inboard armrests. For added convenience, the LT trim level also features available six-way power adjustments for the driver and front-passenger seats.

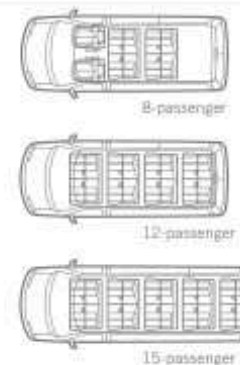
ONSTAR DIRECTIONS AND CONNECTIONS³

Planning your route and your day just got easier. Standard in every Savana Passenger Van is a six-month trial subscription to OnStar Directions & Connections. With Turn-By-Turn Navigation, you just push the OnStar button to tell the Advisor where you want to go, and turn-by-turn directions are downloaded to your vehicle. OnStar eNav lets you plan routes on Mapquest.com or Google™ MapsSM and store them in your vehicle so you can call them up with a simple voice command.

CONNECT WITH BLUETOOTH⁴

Thanks to available Bluetooth connectivity, you can sync up your Bluetooth mobile device for in-vehicle, hands-free calling. Steering-wheel-mounted controls help you start a call and control volume, then dial by voice and listen to your call through the audio system. You can also monitor and operate your MP3 music player with audio system controls on the radio or steering wheel with Savana's available USB port.¹

FIGURE 2: SAVANA SEATING CONFIGURATIONS



With two wheelbase choices, three model series and seating arrangements that can accommodate up to 15 passengers in the extended wheelbase version, Savana has a place for everyone.

FIGURE 3: DEALER-INSTALLED WIFI²



Turn your Savana into a mobile hot spot with the first wireless router engineered specifically for automotive use. It can securely accommodate up to 10 wireless devices at one time, at a range of up to 150 feet with superior buffering capability to eliminate dropped connection issues, to help you and your passengers stay connected, wherever you are.

¹Not compatible with all devices. ²Go to gm.com/bluetooth to find out which Bluetooth phones are compatible with the vehicle. ³Monthly rates apply. Visit automobile.com for coverage map and details. ⁴Visit onstar.com for details and system limitations.





CARGO CONFIGURATIONS AND CAPACITY

ROOM TO GROW.

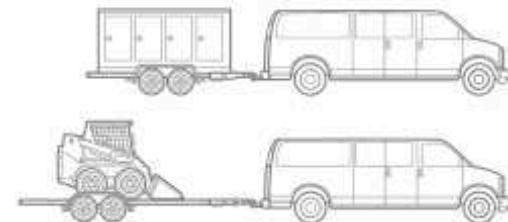
From the frame up, Savana has the flexibility and capability to match your aspirations. With several model and wheelbase choices, Savana has the power and the capacity to respond to your business needs as they grow.

FIGURE 4: TWO WHEELBASE OPTIONS



If you have challenges, we have solutions: Savana is available in two configurations: the 135-inch regular wheelbase model available in all Series, and the 155-inch extended-wheelbase version available in 2500 Series Cargo Vans and all 3500 Series models. Maximum capacity in the standard model is 239.7 cu. ft. of total volume behind the front seats. Step up to the extended wheelbase version, and you can handle up to 284.4 cu. ft. of cargo behind the front seats.¹

FIGURE 5: TRAILERING POWER



For work or recreation, Savana gives you the trawling capability you'd expect from a GMC. The capacity ranges from 4300 lbs in the 1500 Series model, up to 10,000 lbs in the 3500 Series with the 6.0L V-8 engine or the available Duramax Diesel 6.6L V-8 Turbo.²

STOLEN VEHICLE ASSISTANCE

On select models, OnStar offers the technology to help recover your Savana in the event of a theft³ for greater peace of mind. No one else offers more ways to help recover a stolen vehicle than OnStar Stolen Vehicle Assistance. If your vehicle is stolen, we can locate it, prevent it from restarting or slow the vehicle down to help recover it safely and quickly.

¹Cargo and load capacity limited by weight and distribution. ²Maximum trailer weight ratings are calculated assuming a base vehicle, except for any option(s) necessary to achieve the rating, plus driver. The weight of other optional equipment, passengers and cargo will reduce the maximum trailer weight your vehicle can tow. See your GMC dealer for additional details. ³Visit onstar.com for map coverage, details and system limitations.

ENGINES

POWERED FOR PROGRESS.

GMC Savana is designed to help you get exactly the power you need. With the addition of the reliable and proven Duramax Diesel 6.6L V-8 Turbo, Savana's engine lineup offers the widest range of available engine displacements, outputs and fuel choices in its class, from E85¹ to Compressed Natural Gas (CNG) to biodiesel.

ENGINE CHOICES:

ENGINE	AVAILABILITY	MODEL
VORTEC 4.3L V-6	STD.	1500 SERIES CARGO
VORTEC 5.3L V-8 (E85 CAPABLE) ²	STD. AVAIL.	1500 SERIES PASSENGER AND AWD CARGO, BASE CARGO
VORTEC 4.8L V-8 (E85 CAPABLE)	STD.	2500 SERIES PASSENGER AND 2500 AND 3500 SERIES CARGO
VORTEC 6.0L V-8 (E85 CAPABLE)	STD. AVAIL.	3500 SERIES PASSENGER, 2500 AND 3500 SERIES CARGO
VORTEC 6.0L V-8 (CNG) ³	AVAIL.	2500 AND 3500 SERIES CARGO
DURAMAX DIESEL 6.6L V-8 TURBO (B20 CAPABLE)	AVAIL.	3500 SERIES PASSENGER AND 2500 AND 3500 SERIES CARGO

ONSTAR VEHICLE DIAGNOSTICS

Savana is even engineered with the technology to help you keep track of its condition as you drive. With OnStar² (standard for six months on Passenger Van models), your Savana can run through a monthly check of your engine, transmission, antilock brakes and more, then e-mail the results to you. You can also ask for a real-time OnStar On-Demand Vehicle Diagnostics check while you are driving.

E85 FLEXFUEL CAPABLE

To reduce exhaust emissions and help to increase power and torque, every Savana gasoline V-8 engine is FlexFuel capable.² This means each engine can run on E85 ethanol, which is a blend of 85 percent ethanol produced from mostly domestic sources and 15 percent regular gasoline.

¹Visit gm.com/e85 to see if there is an E85 station near you. ²Visit onstar.com for details and system limitations.

AUTOMATIC GRADE BRAKING AND TOW/HAUL MODE

Automatic Grade Braking is a standard feature on 2500 and 3500 Series models that monitors vehicle speed, acceleration, engine torque and brake pedal usage. Using this information, it detects when your vehicle is on a downhill grade. Then, if necessary, the transmission downshifts to help you hold your desired speed. This can help to reduce brake wear. Tow/Haul mode is a driver-selectable feature of the 6-speed automatic transmission. It reduces excess shifting when towing or hauling a heavy load. The feature is complemented by manual range selection, which allows you to select desired gears to suit variable driving conditions.

DURAMAX POWER

The available Duramax Diesel 6.6L V-8 Turbo is engineered to deliver outstanding horsepower and torque. It uses advanced direct-injection technology to run at peak efficiency and start easily in extremely cold temperatures—as quickly as 3.0 seconds at -40 degrees F. This advanced engine is also B20 capable.



DURAMAX DIESEL 6.6L V-8 TURBO



WIDE AND HANDLING

A SOLID FOUNDATION.

Savana is built to the time-tested body-on-frame formula for maximum ruggedness and durability. It has been continuously refined to incorporate advanced chassis control technology features to help you drive with confidence regardless of the season, weather or road conditions. So, whenever you need to make your move, you can be sure your Savana is good to go.

FIGURE 6: FULLY BOXED FRAME



For maximum strength, the Savana features a fully boxed, high-strength steel frame. To create this strong foundation, two C-channel sections are overlapped, essentially welding a frame inside a frame to form a rigid box that resists bending and twisting.

FIGURE 7: FULLY AUTOMATIC LOCKING REAR DIFFERENTIAL



No other competitor offers an available fully automatic locking rear differential for on-road use. When the Eaton® Locker senses a difference in wheel speed between the left and right rear wheels of approximately 100 rpm, it locks both to turn in unison for added traction.

TIRE PRESSURE MONITORING

Proper tire pressure is vital to your safety, load capability and comfort. It can also help save money in repairs and tire replacement. That's why every Savana is equipped with the Tire Pressure Monitoring System.¹ It uses pressure sensors mounted inside the wheel to constantly monitor tire inflation. If the pressure in any tire falls below the recommended level, it sends an alert to you through your Driver Information Center.

¹Does not monitor spare tire.

SAVANA CARGO UPFIT

WORK WITH A PROFESSIONAL.

Savana Cargo Van provides a solid foundation to grow your business. It all begins with proven body-on-frame construction and a choice of wheelbases that readily adapt to the most popular upfitting options. Add in the technology of available dealer-installed AutoNet WiFi¹ and Bluetooth² connectivity, and the result is a fully functional workspace that you can tailor to all the ways that you work.

COMPRESSED NATURAL GAS (CNG) TECHNOLOGY

GM supports the goal of reducing CO₂ emissions by introducing CNG technology that significantly reduces vehicle emissions. Check the fleet Web site at gmcfleet.com for interim availability.

CHOICE OF WHEELBASES

Savana has two wheelbase configurations—135-inch (all Series) and 155-inch (3500 models)—available as Rear-Wheel-Drive (RWD) models. The 135-inch wheelbase is also available as an All-Wheel-Drive (AWD) model. At a maximum payload of up to 4187 pounds,³ the regular-wheelbase RWD 3500 Series model with the Vortec 4.8L V-8 provides the highest rating in the Savana lineup.

CLASS-EXCLUSIVE DRIVER-SIDE SWING-OUT DOORS

Savana offers the choice between available 60/40 split swing-out passenger-side doors or a sliding passenger-side door. For even greater access, Savana's available GM-exclusive 60/40 split driver-side cargo doors open into the rear cargo area for easier loading and unloading.

VOCATIONAL UPFIT PACKAGES

These seamlessly integrated products are designed to meet the vocational needs of professionals in many categories. Flexible upfit cash incentive options are also available for eligible GMC vans. For a list of eligible upfit incentives, see your dealer or go to gmc.com.

¹Monthly rates apply. Visit autonetdirect.com for coverage map and details. ²Go to gm.com/bluetooth to find out which Bluetooth phones are compatible with the vehicle. ³Maximum payload capacity includes weight of the driver, passengers, optional equipment and cargo.





—SAVANNA 3500 SERIES CARGO VAN. MSRP. \$28,999. *MSRP. EXcludes destination, freight, equipment, and other dealer-installed options. See dealer for information, restrictions, and warranties.

SAVANA MOBILITY

CAPABILITY FOR ALL

Savana Passenger Van is the ideal mobility solution with the capability of transporting the disabled with safety, comfort and dignity.¹ Whether you need a single para transit van or an entire fleet of vehicles, Savana provides the handling, configuration and upfit capability to meet your transport needs.

LONG WHEELBASE, SMOOTH RIDE

Savana is designed with passenger comfort as its first priority. It is available in a 155-inch extended-wheelbase model for a refined and well-controlled ride that takes the effort out of longer trips. The long wheelbase also offers the space and capability to accommodate one or two extra wheelchair stations for non-ambulatory occupants, compared to the regular wheelbase model.

A SENSE OF SECURITY

When you choose Savana Passenger Van for your mobility conversion, you can be confident that it takes your safety as seriously as you do. No other competitor in its class includes standard head curtain side-impact air bags² to protect the first-, second- and third-row outboard occupants. These Savana models also feature the StabiliTrak stability control system and six months of OnStar Directions & Connections,³ including Turn-by-Turn Navigation and Automatic Crash Response.

MULTIPLE CONFIGURATIONS⁴

Savana can be fitted with a complete range of Americans With Disabilities Act (ADA)-compliant wheelchair and seating configurations without compromising interior comfort or convenience. Savana readily accepts a raised top, raised doors and upper reinforcement safety structure upfits, various wheelchair lift options, retractable wheelchair securement systems, numerous wheelchair seating configurations, running boards and entry systems.

Mobility upfits contain equipment from independent suppliers. See page 18 for information about alterations and warranties. ¹Always use safety belts and the correct restraint for your child's age and size. ²Always use safety belts and the correct restraint for your child's age and size. ³Always use safety belts and the correct restraint for your child's age and size. ⁴Always use safety belts and the correct restraint for your child's age and size. ⁵Always use safety belts and the correct restraint for your child's age and size. ⁶Always use safety belts and the correct restraint for your child's age and size. ⁷Always use safety belts and the correct restraint for your child's age and size. ⁸Always use safety belts and the correct restraint for your child's age and size. ⁹Always use safety belts and the correct restraint for your child's age and size. ¹⁰Always use safety belts and the correct restraint for your child's age and size. ¹¹Always use safety belts and the correct restraint for your child's age and size. ¹²Always use safety belts and the correct restraint for your child's age and size. ¹³Always use safety belts and the correct restraint for your child's age and size. ¹⁴Always use safety belts and the correct restraint for your child's age and size. ¹⁵Always use safety belts and the correct restraint for your child's age and size. ¹⁶Always use safety belts and the correct restraint for your child's age and size. ¹⁷Always use safety belts and the correct restraint for your child's age and size. ¹⁸Always use safety belts and the correct restraint for your child's age and size. ¹⁹Always use safety belts and the correct restraint for your child's age and size. ²⁰Always use safety belts and the correct restraint for your child's age and size. ²¹Always use safety belts and the correct restraint for your child's age and size. ²²Always use safety belts and the correct restraint for your child's age and size. ²³Always use safety belts and the correct restraint for your child's age and size. ²⁴Always use safety belts and the correct restraint for your child's age and size. ²⁵Always use safety belts and the correct restraint for your child's age and size. ²⁶Always use safety belts and the correct restraint for your child's age and size. ²⁷Always use safety belts and the correct restraint for your child's age and size. ²⁸Always use safety belts and the correct restraint for your child's age and size. ²⁹Always use safety belts and the correct restraint for your child's age and size. ³⁰Always use safety belts and the correct restraint for your child's age and size. ³¹Always use safety belts and the correct restraint for your child's age and size. ³²Always use safety belts and the correct restraint for your child's age and size. ³³Always use safety belts and the correct restraint for your child's age and size. ³⁴Always use safety belts and the correct restraint for your child's age and size. ³⁵Always use safety belts and the correct restraint for your child's age and size. ³⁶Always use safety belts and the correct restraint for your child's age and size. ³⁷Always use safety belts and the correct restraint for your child's age and size. ³⁸Always use safety belts and the correct restraint for your child's age and size. ³⁹Always use safety belts and the correct restraint for your child's age and size. ⁴⁰Always use safety belts and the correct restraint for your child's age and size. ⁴¹Always use safety belts and the correct restraint for your child's age and size. ⁴²Always use safety belts and the correct restraint for your child's age and size. ⁴³Always use safety belts and the correct restraint for your child's age and size. ⁴⁴Always use safety belts and the correct restraint for your child's age and size. ⁴⁵Always use safety belts and the correct restraint for your child's age and size. ⁴⁶Always use safety belts and the correct restraint for your child's age and size. ⁴⁷Always use safety belts and the correct restraint for your child's age and size. ⁴⁸Always use safety belts and the correct restraint for your child's age and size. ⁴⁹Always use safety belts and the correct restraint for your child's age and size. ⁵⁰Always use safety belts and the correct restraint for your child's age and size. ⁵¹Always use safety belts and the correct restraint for your child's age and size. ⁵²Always use safety belts and the correct restraint for your child's age and size. ⁵³Always use safety belts and the correct restraint for your child's age and size. ⁵⁴Always use safety belts and the correct restraint for your child's age and size. ⁵⁵Always use safety belts and the correct restraint for your child's age and size. ⁵⁶Always use safety belts and the correct restraint for your child's age and size. ⁵⁷Always use safety belts and the correct restraint for your child's age and size. ⁵⁸Always use safety belts and the correct restraint for your child's age and size. ⁵⁹Always use safety belts and the correct restraint for your child's age and size. ⁶⁰Always use safety belts and the correct restraint for your child's age and size. ⁶¹Always use safety belts and the correct restraint for your child's age and size. ⁶²Always use safety belts and the correct restraint for your child's age and size. ⁶³Always use safety belts and the correct restraint for your child's age and size. ⁶⁴Always use safety belts and the correct restraint for your child's age and size. ⁶⁵Always use safety belts and the correct restraint for your child's age and size. ⁶⁶Always use safety belts and the correct restraint for your child's age and size. ⁶⁷Always use safety belts and the correct restraint for your child's age and size. ⁶⁸Always use safety belts and the correct restraint for your child's age and size. ⁶⁹Always use safety belts and the correct restraint for your child's age and size. ⁷⁰Always use safety belts and the correct restraint for your child's age and size. ⁷¹Always use safety belts and the correct restraint for your child's age and size. ⁷²Always use safety belts and the correct restraint for your child's age and size. ⁷³Always use safety belts and the correct restraint for your child's age and size. ⁷⁴Always use safety belts and the correct restraint for your child's age and size. ⁷⁵Always use safety belts and the correct restraint for your child's age and size. ⁷⁶Always use safety belts and the correct restraint for your child's age and size. ⁷⁷Always use safety belts and the correct restraint for your child's age and size. ⁷⁸Always use safety belts and the correct restraint for your child's age and size. ⁷⁹Always use safety belts and the correct restraint for your child's age and size. ⁸⁰Always use safety belts and the correct restraint for your child's age and size. ⁸¹Always use safety belts and the correct restraint for your child's age and size. ⁸²Always use safety belts and the correct restraint for your child's age and size. ⁸³Always use safety belts and the correct restraint for your child's age and size. ⁸⁴Always use safety belts and the correct restraint for your child's age and size. ⁸⁵Always use safety belts and the correct restraint for your child's age and size. ⁸⁶Always use safety belts and the correct restraint for your child's age and size. ⁸⁷Always use safety belts and the correct restraint for your child's age and size. ⁸⁸Always use safety belts and the correct restraint for your child's age and size. ⁸⁹Always use safety belts and the correct restraint for your child's age and size. ⁹⁰Always use safety belts and the correct restraint for your child's age and size. ⁹¹Always use safety belts and the correct restraint for your child's age and size. ⁹²Always use safety belts and the correct restraint for your child's age and size. ⁹³Always use safety belts and the correct restraint for your child's age and size. ⁹⁴Always use safety belts and the correct restraint for your child's age and size. ⁹⁵Always use safety belts and the correct restraint for your child's age and size. ⁹⁶Always use safety belts and the correct restraint for your child's age and size. ⁹⁷Always use safety belts and the correct restraint for your child's age and size. ⁹⁸Always use safety belts and the correct restraint for your child's age and size. ⁹⁹Always use safety belts and the correct restraint for your child's age and size. ¹⁰⁰Always use safety belts and the correct restraint for your child's age and size.





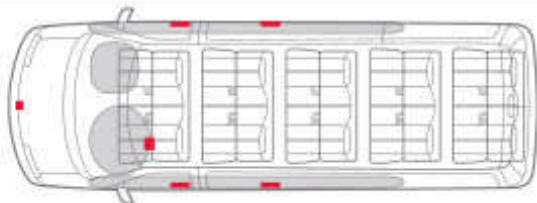
SAVANA 2500-SERIES PASSENGER VAN IN PURE SILVER METALLIC SHOWN WITH EQUIPMENT FROM INDEPENDENT SUPPLIER. SEE PAGE 18 FOR INFORMATION ABOUT ALTERATIONS AND WARRANTIES.

SAFETY AND SECURITY

SAFETY ISN'T JUST A FEATURE. IT'S A PHILOSOPHY.

Crafting the systems to protect you before, during and, thanks to OnStar, even after a crash is an exacting, ongoing process for the engineers who created Savana. From its solid construction and advanced control features, to the available security and confidence of OnStar,¹ Savana is engineered with crash avoidance and crash protection features to give you greater security and confidence. So, when everyone is counting on you, you can count on Savana.

FIGURE 8: AIR BAG PROTECTION¹



In addition to driver and right-front passenger frontal air bags, head curtain side-impact air bags for the first-, second- and third-row outboard passengers are standard on all Savana passenger van models. It takes only milliseconds for the bags to deploy, and all the air bags can stay inflated for up to five seconds in the unlikely event of a rollover. To protect smaller passengers, 1500 Series models have the Front Passenger Sensing System that can deactivate the air bags to prevent air-bag-induced injuries.

STEEL SAFETY CAGE DESIGN

For strength without compromise, Savana's high-strength steel frame is tied in to the body structure with reinforced body sills, roof pillars and a reinforced floor to create a safety cage that surrounds and helps maintain passenger compartment integrity in the event of a collision.

ANTILOCK BRAKE SYSTEM (ABS)

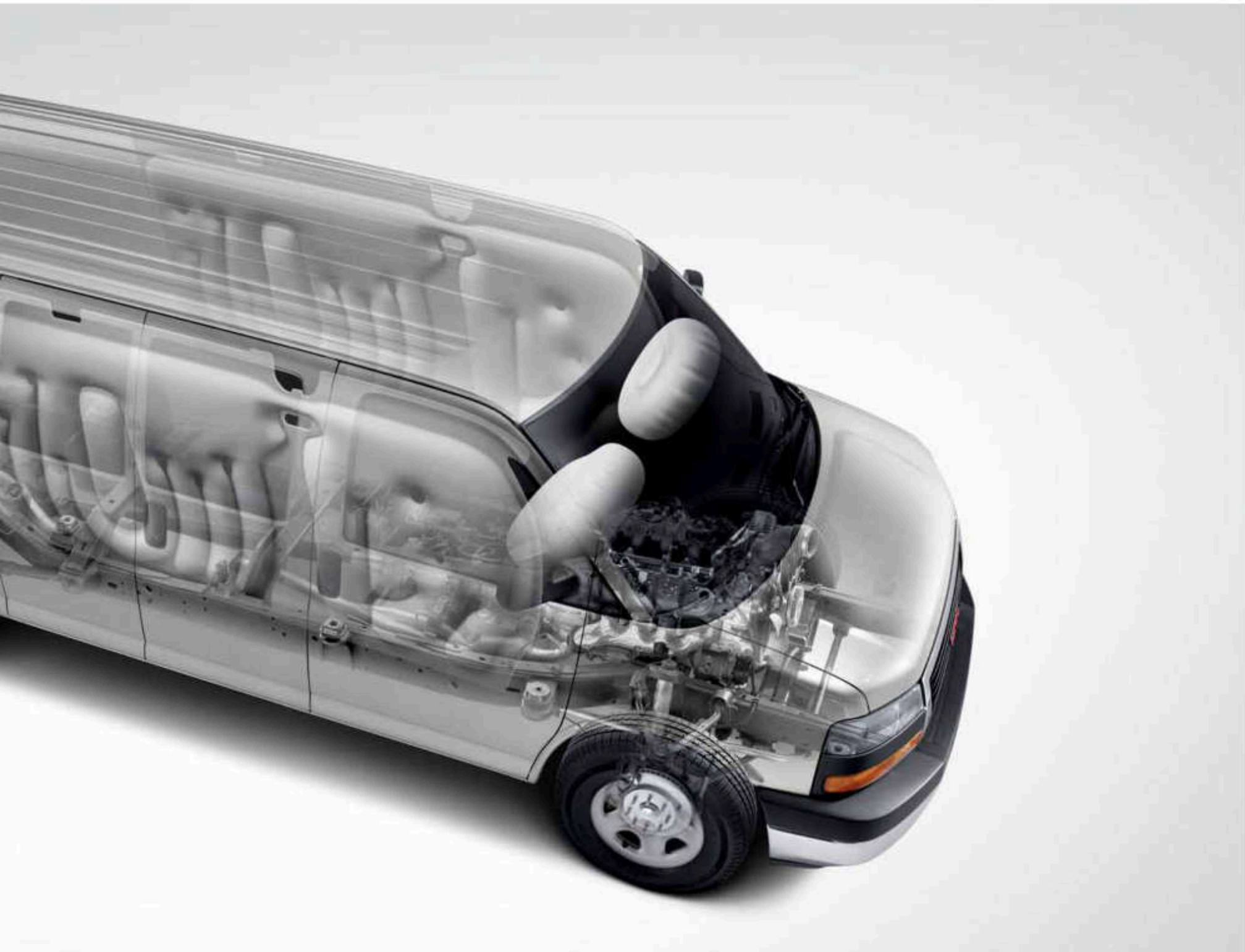
Every Savana features power four-wheel disc brakes with ABS. This system helps you to maintain steering control under hard braking situations.

AUTOMATIC CRASH RESPONSE

With OnStar Automatic Crash Response,¹ you get the help you need even if you can't ask for it. In the event of a crash, sensors around your vehicle can automatically send an alert to OnStar. An OnStar Advisor is immediately connected to your vehicle to see if you need help. If you are unable to respond, the Advisor will use GPS technology to pinpoint your exact location to direct emergency help—even in areas of limited cellular reception. The Advisor can also relay critical crash information to emergency responders, such as the severity and type of crash, so the responders are better equipped to treat you at the scene.

Visit onstar.com for details and system limitations. ¹Always use safety belts and the correct restraint for your child's age and size. Even in vehicles equipped with the Passenger Sensing System, children are safer when properly secured in a rear seat in the appropriate infant, child or booster seat. Never place a rear-facing infant restraint in the front seat of any vehicle equipped with a passenger air bag. See your Owner's Manual and child safety seat instructions for more information.





TRIM LEVELS

MECHANICAL

	LS	LT
ALTERNATOR 145 amps. Standard on Diesel models. Also included with rear air conditioning on gas engine models.	S	S
AUXILIARY HEAT GENERATOR Fuel operated. Diesel models only.	A	A
BATTERY Dual heavy-duty maintenance-free with 770 cold-cranking amps, rundown protection and retained accessory power. Diesel models only.	S	S
COLD CLIMATE PACKAGE Engine block heater	A	A
DIFFERENTIAL Heavy-duty automatic locking rear	A	A
ENGINES Vortec 4.8L V-8 FlexFuel. Standard on 2500 Series models.	S	S
Vortec 5.3L V-8 FlexFuel. Standard on 1500 Series models.	S	S
Vortec 6.0L V-8 FlexFuel. Available on 2500 Series models.	A	A
Vortec 6.0L V-8 FlexFuel. Standard on 3500 Series models.	S	S
Duramax Diesel 6.6L V-8 Turbo. Available only on 3500 Series models. See dealer for details.	A	A
STABILITRAK Vehicle stability enhancement system	S	S
TOW/HAUL MODE SELECTOR	S	S
TRAILERING EQUIPMENT Heavy-duty trailering hitch platform and 7-pin sealed connector	A	A
TRANSMISSIONS 4-speed automatic, electronically controlled with overdrive, Tow/Haul mode and internal transmission oil cooler. Standard on 1500 Series models.	S	S
6-speed automatic, heavy-duty, electronic Tow/Haul mode and internal transmission oil cooler. Standard on 2500/3500 Series models.	S	S
TRANSMISSION OIL COOLER External; 2500/3500 Series models	S	S

SEATING

FRONT RECLINING BUCKET SEATS With vinyl trim	S	—
With custom cloth trim	A	S
POWER SEAT ADJUSTER Driver and front passenger, 6-way	—	A
SEATING CONFIGURATION 8-passenger, 1500 Series models	S	S
8-passenger, 2500/3500 Series models	A	A
12-passenger, 2500/3500 Series models	S	S
15-passenger, 3500 Series extended wheelbase models only	A	A

INSTRUMENTATION AND CONTROLS

8-POINT DIGITAL COMPASS Located in the Driver Information Center. Requires rear air conditioning.	A	S
OUTSIDE TEMPERATURE DISPLAY Located in the Driver Information Center. On LS trim, requires Chrome Appearance Package.	A	S

TRIM LEVELS

STEERING WHEEL Leather-wrapped; includes steering-wheel-mounted audio controls. Requires Tilt-Wheel, cruise control and uplevel CD with MP3 audio system.	A	A
Tilt-Wheel adjustment; includes cruise control. Requires Convenience Package on LS models. Standard on 3500 Series models.	A	S

INTERIOR/CONVENIENCE

AIR CONDITIONING Front	S	S
Rear. Requires auxiliary lighting on LS models. Standard on 3500 Series extended wheelbase models.	A	S
CONVENIENCE PACKAGE (ZQ2) Power windows and door locks	A	S
CONVENIENCE PACKAGE (ZQ3) Tilt-Wheel and cruise control. Standard on 3500 Series models.	A	S
DELUXE CONSOLE With swing-out storage	A	S
PADDED VISORS Driver and passenger side	S	S
With vanity mirrors (illuminated on passenger side). Requires with auxiliary lighting on LS models. Standard on 3500 Series extended wheelbase models.	A	S
POWER PACKAGE Includes Convenience Package (ZQ2) and outside heated, power-adjustable, black mirrors. Upgradeable to include turn signal indicators.	A	—
POWER WINDOWS AND DOOR LOCKS	A	S
REAR AUXILIARY HEATER LS trim; included with rear air conditioning; standard on 3500 Series extended wheelbase models	A	S
REAR-WINDOW DEFOGGER	A	A
REMOTE KEYLESS ENTRY Includes two transmitters. Requires Convenience Package (ZQ2) on LS models.	A	S
REMOTE START Requires remote keyless entry on LS models	A	A

ENTERTAINMENT/COMMUNICATION/NAVIGATION

AM/FM STEREO With seek-and-scan, digital clock and 2 front-door speakers.	S	S
With CD player	A	A
With CD/MP3 player, USB port ¹ and 6 speakers. On LS trim, requires power windows and door locks.	A	A
BLUETOOTH FOR PHONE² Personal cell-phone connectivity	A	A
ONSTAR Directions & Connections plan. ³ Six-month subscription. See page 17 for details.	S	S
XM RADIO⁴ 3 trial months included. See page 17 for details.	A	A

EXTERIOR STYLING AND FUNCTIONALITY

CHROME APPEARANCE PACKAGE Chrome front and rear bumpers and grille; includes halogen composite headlamps	A	S
DAYTIME RUNNING LAMPS	S	S

TRIM LEVELS

FRONT AND REAR BUMPERS Black	S	—
OUTSIDE REARVIEW MIRRORS Manual foldaway	S	S
Power-operated, heated, black. Requires Convenience Package (ZQ2). Included with Power Package on LS trim.	A	A
Power-operated, heated, black, with turn signals in glass. Requires Convenience Package (ZQ2).	A	A
SLIDING PASSENGER-SIDE DOOR On LS trim, requires rear air conditioning	A	A
SWING-OUT PASSENGER-SIDE DOORS	S	S
SOLAR-RAY DEEP-TINTED WINDOWS	S	S

SAFETY AND SECURITY

AIR BAGS⁵ Frontal, for driver and passenger	S	S
Head curtain side-impact for first, second and third rows	S	S
ENHANCED-TECHNOLOGY GLASS Rearmost side windows; 12- and 15-passenger models only	S	S
LATCH CHILD SEAT ANCHOR SYSTEM	S	S
PASS-KEY III THEFT-DETERRENT SYSTEM	S	S
POWER DOOR LOCKS With lockout protection	A	S
SIDE STEEL DOOR BEAMS	S	S
TIRE PRESSURE MONITORING SYSTEM (Does not monitor spare tire)	S	S

¹Not compatible with all devices. ²Go to gm.com/bluetooth to find out which Bluetooth phones are compatible with the vehicle. ³Visit onstar.com for details and system limitations. ⁴XM Radio requires a subscription, sold separately by XM after the first 90 days. XM Radio U.S. service only available in the 48 contiguous United States and the District of Columbia. For more information, visit xmradio.com. ⁵Always use safety belts and the correct restraint for your child's age and size. Even in vehicles equipped with the Passenger Side Impact System, children are safer when properly secured in a rear seat in an appropriate infant, child or booster seat. Never place a rear-facing infant restraint in the front seat of any vehicle equipped with a passenger air bag. See the Owner's Manual and child safety seat instructions for more safety information. ⁶ERS is 85 percent ethanol and 15 percent gasoline. Visit gm.com/ERS to see if there is an ERS station near you. ⁷When properly equipped, includes weight of vehicle, passengers, cargo and equipment. ⁸Maximum trailer weight ratings are calculated assuming a base vehicle, except for any option(s) necessary to achieve the rating, plus driver. The weight of other optional equipment, passengers and cargo will reduce the maximum trailer weight your vehicle can tow. See your GMC dealer for additional details. ⁹Use only GM-approved tire and wheel combinations. For approved tire and wheel combinations and other important information, go to gm.com/ownerszone or see your dealer for details.

ENGINE SPECIFICATIONS

	VORTEC 4.8L V-8	VORTEC 5.3L V-8	VORTEC 6.0L V-8	DURAMAX DIESEL 6.6L V-8 TURBO
SAE net horsepower @ rpm	280 @ 5200	310 @ 5200	323 @ 4600	260 @ 3100
SAE net torque @ rpm (lb-ft)	296 @ 4600	334 @ 4500	373 @ 4400	525 @ 1600

ENGINE / MODEL AVAILABILITY	1500 SERIES:		2500 SERIES:	3500 SERIES:
	RWD	AWD	RWD	RWD
Vortec 4.8L V-8 (E85-capable) ¹	—	—	S	—
Vortec 5.3L V-8 (E85-capable)	S	S	—	—
Vortec 6.0L V-8 (E85-capable)	—	—	A	S
Duramax Diesel 6.6L V-8 Turbo (B20-capable)	—	—	—	A

STANDARD TECHNICAL DATA	1500 SERIES		2500 SERIES	3500 SERIES
Gross Vehicle Weight Rating (lbs) ²	7300 (RWD)/ 7300 (AWD)		8600	9600/9900
Front Suspension (RWD)	Independent coil springs—all series			
Front Suspension (AWD)	Independent torsion bar—all series			
Front Axle capacity (lbs)	3600 (RWD)	3700 (AWD)	4100	4300
Rear Suspension	Multileaf springs—all series			
Rear Axle capacity (lbs)	4000		5360	6084
Brakes	4-wheel disc with antilock system			
Transmission: Electronic automatic with overdrive, Tow/Haul mode	4-speed with internal oil cooler		6-speed heavy-duty with internal oil cooler	6-speed heavy-duty with internal oil cooler

MAX. TRAILER WEIGHT IN LBS ⁴	AXLE RATIO	VORTEC 4.8L V-8	VORTEC 5.3L V-8	VORTEC 6.0L V-8	DURAMAX DIESEL 6.6L V-8 TURBO
1500 (RWD)	3.73	—	6200	—	—
1500 (AWD)	3.73	—	6000	—	—
2500	3.42	6700	—	9600	—
3500 (regular wheelbase)	3.42	—	—	9700	—
3500 (extended wheelbase)	3.42	—	—	9300	—
3500 (regular wheelbase)	3.54	—	—	—	9900
3500 (extended wheelbase)	3.54	—	—	—	9700

1500 SERIES WHEELS⁵

NX7
17" 6-LUG GRAY-PAINTED STEEL
STANDARD: 1500 SERIES
LS TRIM



P03
17" 6-LUG GRAY-PAINTED STEEL WITH
CHROME CENTER CAP
STANDARD: 1500 SERIES
LT TRIM
AVAILABLE: 1500 SERIES
LS TRIM



N88
17" 6-LUG PREMIUM
ALUMINUM
AVAILABLE:
1500 SERIES

2500/3500 SERIES WHEELS⁵

QB5
16" 8-LUG GRAY-PAINTED STEEL
STANDARD: 2500/
3500 SERIES LS TRIM



P03
16" 8-LUG GRAY-PAINTED STEEL WITH
CHROME CENTER CAP
STANDARD: 2500/
3500 SERIES LT TRIM
AVAILABLE: 2500/
3500 SERIES LS TRIM

GMC SAVANA

COLORS

ONYX BLACK



STEEL GRAY METALLIC EXTRA-COST COLOR



SAND BEIGE METALLIC EXTRA-COST COLOR



DEEP BLUE METALLIC EXTRA-COST COLOR



SUMMIT WHITE



POLO GREEN METALLIC EXTRA-COST COLOR



FIRE RED EXTRA-COST COLOR



PURE SILVER METALLIC EXTRA-COST COLOR



CLOTH STANDARD LT. AVAILABLE LS



NEUTRAL



MEDIUM PEWTER


VINYL STANDARD LS



NEUTRAL



MEDIUM PEWTER



AT GMC, MORE IS WHAT WE DO. OUR DEDICATION TO ENGINEERING EXCELLENCE LEADS US TO CONSTANTLY EXAMINE AND REFINE THE IDEAS THAT HELP GIVE YOU MORE CAPABILITY, POWER AND CONTROL.

FOR 2011, WE ARE PROUD TO INTRODUCE THE REDESIGNED GMC SIERRA HD, INCLUDING THE FIRST-EVER DENALI HD, OUR STRONGEST, SMARTEST AND MOST POWERFUL SIERRA PICKUPS EVER, AS WELL AS THE FIRST-EVER GMC ACADIA DENALI.

THESE NEW VEHICLES JOIN THE LEGENDARY GMC SIERRA AND YUKON THAT OFFER THE WIDEST ARRAY OF FULL-SIZE HYBRIDS AVAILABLE, AND THE GMC TERRAIN, WITH BEST-IN-CLASS HIGHWAY FUEL ECONOMY.¹

TOGETHER, THEY SHOW HOW EXPERIENCE AND INNOVATION CAN OVERCOME COMPROMISE. IT'S WHY WE NEVER SAY NEVER.

GMC. WE ARE PROFESSIONAL GRADE.

¹EPA-estimated mpg 32 hwy. Based on 2010 GM Compact SUV-Crossover segment.



ONSTAR

OnStar is a core asset of your Savana. Benefiting from more than a decade of innovative development, it is both a highly advanced technology—fully integrated within the vehicle—and a warm human service. Standard on all Savana Passenger models and available on all Savana Cargo models are six months of the OnStar Directions & Connections plan, including the convenience and safety of Hands-Free Calling. It also includes Automatic Crash Response (see page 12), Stolen Vehicle Assistance, link to Emergency Services, Roadside Assistance, Remote Door Unlock, OnStar Vehicle Diagnostics, Crisis Assist and Remote Horn and Lights. OnStar services require vehicle electrical system (including battery), wireless service and GPS satellite signals to be available and operating for features to function properly. OnStar acts as a link to existing emergency service providers. Subscription Service Agreement required. Visit onstar.com for OnStar's Terms and Conditions, Privacy Policy, details and system limitations.

HANDS-FREE CALLING

OnStar Hands-Free Calling capability is built into your Savana. It's there when your cell phone is unavailable, its battery is low, you can't reach it easily or you left it home or in the office. Your Hands-Free Calling system is the right choice whenever you need an easy way to make and receive calls—at the touch of the phone icon on the rearview mirror or the steering-wheel-mounted control shown on page 2. Voice-activated dialing is convenient because you don't have to dial when you are at the wheel. And Hands-Free Calling is reliable because it's specially designed for better reception and fewer dropped calls in areas of limited cellular reception.

ONSTAR TURN-BY-TURN NAVIGATION

Standard on all Savana Passenger models and available on all Savana Cargo models are six months of the OnStar Directions & Connections plan that adds innovative, easy-to-use Turn-by-Turn Navigation plus Information and Convenience Services and Driving Directions. With Turn-by-Turn Navigation, you simply tell the OnStar Advisor your intended destination, and directions will automatically be sent to your Savana. If you drive off-course, the system can reroute you to your intended destination. An automated voice then guides you turn-by-turn until you arrive at your destination. Turn-by-Turn Navigation is further enhanced with eNAV, allowing you to send Google™ Maps® and MapQuest® destinations directly to your vehicle. No need to print out directions; just call them up with simple voice commands.



XM RADIO

On all Savana models: XM Radio¹ is available with 3 trial months of service. XM turns your drive on with commercial-free music channels from virtually every genre, artist-dedicated channels, live performances and more. Tune in to live play-by-play from the biggest sports, exclusive entertainment from top personalities, compelling talk, hilarious comedy, world-class news, local traffic and weather and family-friendly programming. Everything worth listening to is now on XM. Visit xmradio.com for details.



GOODWRENCH SERVICE

To help your Savana live up to its performance promise, GMC Goodwrench Service—found exclusively at your GMC dealer—is there. With all the engineering excellence in Savana, GM-trained Goodwrench technicians have the expertise to care for all of it.

¹XM Radio requires a subscription, sold separately by XM after the first 90 days. XM Radio U.S. service only available in the 48 contiguous United States and the District of Columbia. For more information, visit xmradio.com.



COMMITMENT PLUS

From the owner orientation—and full tank of gas—you receive when you take possession of your Savana to the **24-Hour Roadside Assistance, Courtesy Transportation and Travel Benefits**, Commitment Plus is a portfolio of owner privileges that lasts throughout your warranty. For expert product information, Roadside Assistance or other services, call 1-800-GMC-8782.

TRAVEL BENEFITS AND ROADSIDE ASSISTANCE Available around the clock: trip routing service, a program for reimbursement for trip interruption due to necessary warranty repairs, towing, flat tire change, jump-starts and more for 5 years or 100,000 miles (whichever comes first).

COURTESY TRANSPORTATION Available at participating dealers: shuttle service, reimbursement of certain public transportation or fuel expenses for overnight warranty repairs, and courtesy rental for overnight work repairs. See your dealer for details.

GMC OWNER CENTER A complimentary, one-stop resource to enhance your GMC ownership experience. It's easy to sign up. Just go to gm.com/gmownercenter/gmc.

BEST COVERAGE IN AMERICA Savana offers the best coverage in America. That means you get all the benefits of Commitment Plus, including Roadside Assistance and Courtesy Transportation. In addition, you get a new level of confidence with GM's 5-Year/100,000-Mile Transferable Powertrain Limited Warranty. Whichever comes first. See GMC dealer for details.

A NOTE ON CHILD SAFETY Always use safety belts and the correct restraint for your child's age and size. Even in vehicles equipped with the Passenger Sensing System, children are safer when properly secured in a rear seat in the appropriate infant, child or booster seat. Never place a rear-facing infant restraint in the front seat of any vehicle equipped with a passenger air bag. See the Owner's Manual and child safety seat instructions for more safety information.

TRAILERING AND OFF-ROAD INFORMATION Please carefully review the Owner's Manual for important safety information about trailering or off-road driving in your vehicle.

IMPORTANT WORDS ABOUT THIS CATALOG We have tried to make this catalog comprehensive and factual. We reserve the right, however, to make changes at any time, without notice, in prices, colors, materials, equipment, specifications, models and availability. Specifications, dimensions, measurements, ratings and other numbers in this catalog and other printed materials provided at the dealership or affixed to vehicles are approximates based upon design and engineering drawings and prototypes and laboratory tests. Your vehicle may differ due to variations in manufacture and equipment. Since some information may have been updated since the time of printing, please check with your GMC dealer for complete details. GMC reserves the right to lengthen or shorten the model year for any product for any reason, or to start and end model years at different times.

FLEET ORDERS Some standard content may be deleted with fleet orders. See dealer for details.

ENGINES GMC products are equipped with engines produced by GM Powertrain or other suppliers to GM worldwide. The engines in GMC products may also be used in other GM makes and models.

GMC.COM See more of Savana on our Web site: gmc.com/savana. More photos and information, hot links to related subjects, convenient dealer locator, pricing guide, spec out your own vehicle. Or call 1-800-GMC-8782.

AN IMPORTANT NOTE ABOUT ALTERATIONS AND WARRANTIES Installations or alterations to the original equipment vehicle (or chassis) as distributed by General Motors are not covered by the General Motors New-Vehicle Limited Warranty. The special body company, assembler, equipment installer or upfitter is solely responsible for warranties on the body or equipment and any alterations (or any effect of the alterations) to any of the parts, components, systems or assemblies installed by GM. General Motors is not responsible for the safety or quality of design features, materials or workmanship of any alterations by such suppliers.

NEW-VEHICLE LIMITED WARRANTY All GMC light-duty vehicles come with a fully transferable, no-deductible 5-year/100,000-mile (whichever comes first) Powertrain Limited Warranty. GM vehicles registered in the U.S.A. are also covered for 3 years or 36,000 miles (whichever comes first). Coverage includes tires and towing to your nearest GMC dealership. Repairs will be made to correct any vehicle defect and most warranty repairs will be made at no charge. In addition, rust-through corrosion will be covered for 6 years or 100,000 miles (whichever comes first). See dealer for details.

ASSEMBLY GMC vehicles and their components are assembled or produced by different operating units of General Motors, its subsidiaries or suppliers to GM worldwide. We sometimes find it necessary to produce GMC vehicles with different or differently sourced components than originally scheduled. Since some options may be unavailable when your vehicle is assembled, we suggest that you verify that your vehicle includes the equipment you ordered or, if there are changes, that they are acceptable to you.

GMMOBILITY.COM (1-800-323-9935) GM Mobility offers financial assistance for eligible adaptive equipment to make automotive travel easier for persons with disabilities or special transportation needs. To learn more about special GM Mobility offers, visit gmmobility.com.

GMCARDMEMBERSERVICES.COM Did you know about the family of reward credit cards that can help you get a great deal on a new GM car, light-duty truck, SUV or crossover? With a GM reward card, you accrue earnings on every credit card purchase to use toward the purchase or lease of an eligible new GM vehicle. With three cards to choose from, you're sure to find one that suits you.

©2010 General Motors. All rights reserved. GM, the GM logo, GMC, the slogans, emblems, vehicle model names, vehicle body designs and other marks appearing in this catalog are the trademarks and/or service marks of General Motors, its subsidiaries, affiliates or licensors. Facebook is a registered trademark of Facebook, Inc.



GMC.COM | LEARN MORE ABOUT GMC, AND JOIN THE DIALDQUE DN FACEBOOK (FACEBOOK.COM/GMC)

11GMC5AVRC-25

