

GMC

SAVANA

2015

WE ARE PROFESSIONAL GRADE



SAVANA PASSENGER VAN IN QUICKSILVER METALLIC (left)
SAVANA CARGO VAN IN SUMMIT WHITE (right)
shown with available equipment.



2015 GMC SAVANA. You put a lot of thought into your business. So do we. That's why Savana is engineered to keep your operation organized, in control and moving forward. Whether you need to carry passengers or cargo, Savana produces its own brand of Professional Grade versatility and reliability that goes beyond mere utility. Incredible thinking results in the broadest V-8 engine lineup in its class, giving you all the tools you need to succeed.



EXTERIOR | 2

INTERIOR | 8

PERFORMANCE | 12

SECURITY | 14

SELECTION | 16

IT'S MORE THAN A VAN— IT'S YOUR BUSINESS.

The Savana Cargo Van is designed to offer the versatility you demand to accomplish any job. When it comes to moving cargo of all shapes and sizes, it's engineered in multiple configurations, with as much as 10,000 pounds of maximum trailering strength¹ and 313.9 cu. ft. of maximum cargo volume.² Here are a few more ways Savana Cargo Van can improve your business.

FULL-WIDTH REAR DOORS.

REAR PARK ASSIST (AVAILABLE).

MULTIPLE WINDOW PACKAGES.

**REAR VISION CAMERA SYSTEM
(AVAILABLE).**

¹Maximum trailer weight ratings are calculated assuming a base vehicle, except for any option(s) necessary to achieve the rating, plus driver. The weight of other optional equipment, passengers and cargo will reduce the maximum trailer weight your vehicle can tow. See your GMC dealer for additional details. ²Extended-wheelbase models with passenger seat removed. Cargo and load capacity limited by weight and distribution.



SAVANA CARGO VAN IN SUMMIT WHITE
shown with available equipment.



EXTERIOR | PASSENGER

SAVANA PASSENGER VAN IN QUICKSILVER METALLIC
shown with available equipment.





BECAUSE EVERY PASSENGER IS PRECIOUS CARGO.

GMC engineers anticipated your needs and what your passengers want with Savana Passenger Vans. Featuring a range of models with configurations from eight to 12 to 15 passengers, Savana has the capacity to accommodate your business demands. Savana also provides an exceptional level of protection, including a reinforced safety cage and standard air bags.¹ Here are other features of Passenger Vans.

**PASSENGER-SIDE SLIDING DOOR
[AVAILABLE].**

**REAR VISION CAMERA SYSTEM
[AVAILABLE].**

REAR PARK ASSIST [AVAILABLE].

**ENHANCED SAFETY GLASS
TECHNOLOGY [12- AND 15-PASSENGER
MODELS ONLY].**

¹Always use safety belts and the correct child restraint for your child's age and size, even with air bags. Even in vehicles equipped with the Passenger Sensing System, children are safer when properly secured in a rear seat in the appropriate infant, child or booster seat. Never place a rear-facing infant restraint in the front seat of any vehicle equipped with an active frontal air bag. See your Owner's Manual and child safety seat instructions for more safety information.

EASY DOES IT.

Savana Cargo and Passenger Vans are engineered to make them easy to load and unload with equipment or people. To reduce the effort necessary to access your tools and cargo, both vans offer several laborsaving door options. No matter which one you choose, you'll gain the helping hand you and your crews deserve.



SAVANA PRO PACKAGE Side-access storage bins on the available Savana Pro Package maximize underused areas in standard vans. It provides plenty of cargo space and a flat load floor, so it easily adapts to your needs.

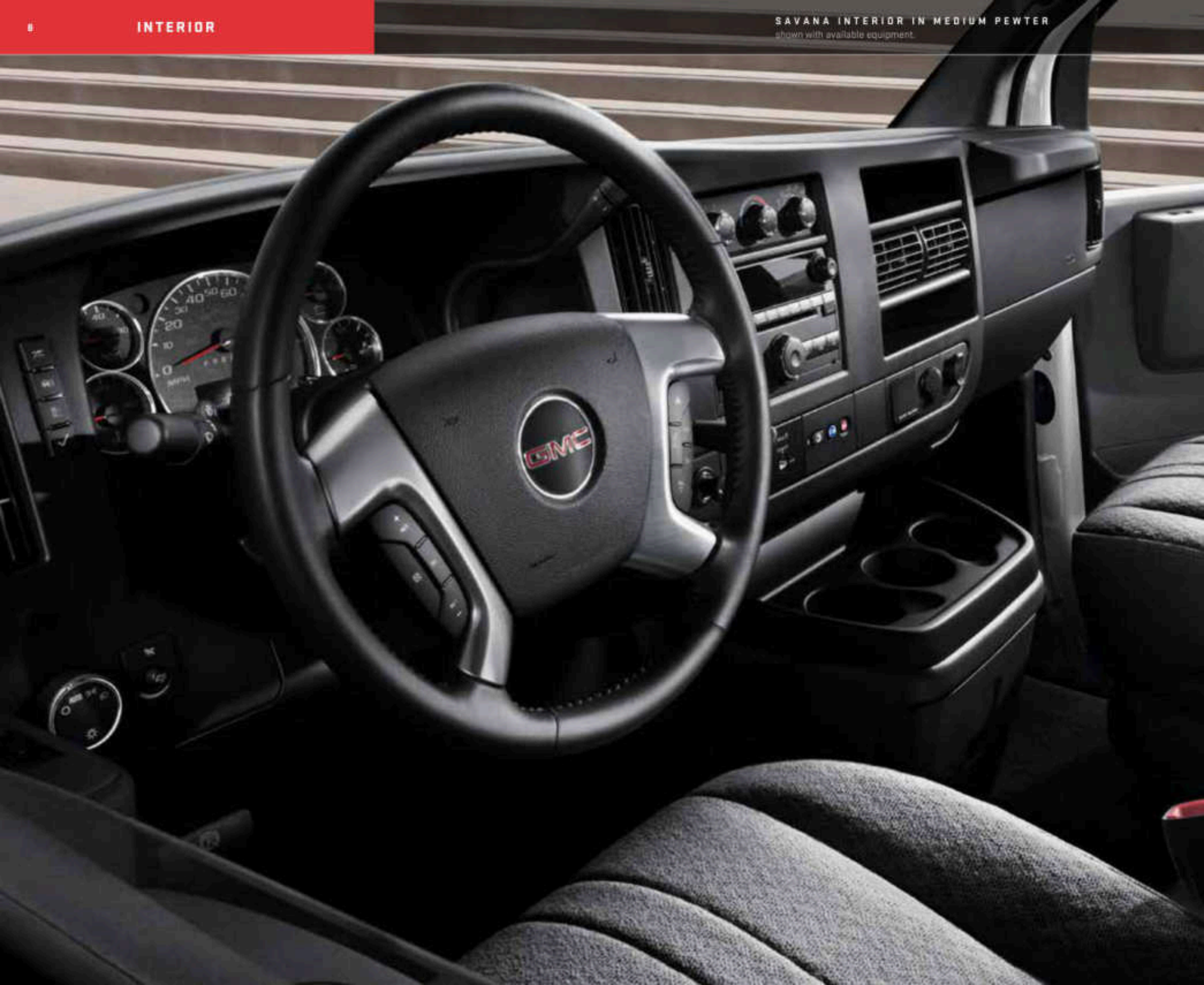


REAR DOORS Savana's rear doors open 165 degrees and feature a low lift-over height, so it's easy to load up its cargo space—up to a maximum of 313.9 cu. ft. on extended-wheelbase models!*

PASSENGER-SIDE SLIDING DOOR Open the available passenger-side sliding cargo door to access Savana's vast cargo area. A wide variety of optional equipment is available that's purpose-built for the tools and materials of practically every trade.



*Extended-wheelbase Cargo Van (model) with passenger seat removed. Cargo and load capacity limited by weight and distribution.





IT'S YOUR CORNER OFFICE, NO MATTER WHERE YOU GO.

When you're moving from one job site to another, connectivity is vital. Fortunately, Savana offers a van-load worth of incredible thinking and technologies to keep you connected, including available dealer-installed Wi-Fi¹ and available Bluetooth[®] for phone.² Passenger Vans can accommodate up to 15 passengers with flexible and comfortable seating configurations. Savana also offers these creature comforts.

POWER WINDOWS AND DOOR LOCKS.

110-VOLT POWER OUTLET.

**ALL-DIGITAL RADIO LINEUP WITH
AVAILABLE USB PORT.³**

**TOUCH-SCREEN NAVIGATION⁴
[AVAILABLE].**

¹Monthly rates apply. Visit autonetmobile.com for coverage map and details. ²Go to gmtotalconnect.com to find out which phones are compatible with the vehicle. ³Not compatible with all devices. ⁴Map coverage available in the United States, U.S. Virgin Islands, Puerto Rico and Canada.

BUSINESS CLASS ACCOMMODATIONS.

With two wheelbases and minimal rear wheel-well interference, Savana Cargo Vans take utility to a new level of functionality and comfort. There's a maximum 313.9 cu. ft. of cargo volume¹ on extended-wheelbase models, while Savana Passenger Van offers two wheelbase choices, two model series and three seating arrangements for up to 15 passengers.

TOUCH-SCREEN NAVIGATION² The available integrated touch-screen Navigation System helps you locate your next job site and map the most efficient route.

TILT-ADJUSTABLE STEERING WHEEL This available feature allows you to position it to your liking. A leather-wrapped steering wheel with integrated radio controls is also available.

BLUETOOTH³ It's available and uses voice recognition to dial phone numbers and name tags.

POWER SUPPLY New standard 110-volt household-style outlet keeps your devices powered up.

STEERING-WHEEL-MOUNTED RADIO CONTROLS These available controls adjust audio functions and, when Savana is equipped with the available USB port,⁴ they also control many of the features of compatible devices.

SIRIUSXM SATELLITE RADIO⁵ Enjoy SiriusXM Satellite Radio with a 3-month trial subscription to the XM Premier Package. Available on WT, LS and LT models.

ULTRASONIC REAR PARK ASSIST This available system alerts you to objects up to 8 feet behind the vehicle at speeds of less than 5 mph.

WI-FI CAPABILITY⁶ Savana is available with dealer-installed Wi-Fi, so you and your crew can stay connected via laptops and other wireless devices. Various applications are also available.

SAVANA PASSENGER INTERIOR

CLIMATE CONTROL All models include front air conditioning, while rear air conditioning is available on 2500 Series models and standard on 3500 Series extended-wheelbase models. A rear auxiliary heater is available with LS trim, included with rear air conditioning and standard on 3500 Series extended-wheelbase models.

POWER WINDOWS AND DOOR LOCKS Standard on all Savana models are convenient power windows and door locks.

SAVANA CARGO INTERIOR

PERSONALIZATION Ask your GMC dealer about the purpose-built applications designed to transform Savana Cargo Van's interior into a workshop on wheels.

DESIGNED FOR DISABILITIES ACT (ADA) COMPLIANCE To comply with ADA, Savana is designed to be fitted with ADA-compliant wheelchair and seating configurations, without compromising interior comfort or convenience. (Vehicles contain equipment from an independent supplier. See the Important Words page for information about alterations and warranty.)

¹With passenger seat removed. Cargo and load capacity limited by weight and distribution. ²Map coverage available in the United States, U.S. Virgin Islands, Puerto Rico and Canada. ³Go to gmtonlineconnect.com to find out which phones are compatible with the vehicle. ⁴Not compatible with all devices. ⁵If you subscribe after your trial period, subscriptions are continuous until you call SiriusXM to cancel. See SiriusXM Customer Agreement for complete terms at siriusxm.com. Other fees and taxes will apply. All fees and programming subject to change. ⁶Monthly rates apply. Visit autonetmobile.com for coverage map and details.



COMMAND CENTER In the 2015 Savana, all instrumentation and controls are positioned to maximize your efficiency, including the new 110-volt power outlet.



REAR VISION CAMERA SYSTEM This available system (shown in the available navigation radio screen) makes it easier to back up to a trailer or negotiate a tight space. The Rear Vision Camera System does not replace driver vision. Please use proper care when backing up.



INTERIOR SEATING Savana Passenger Vans offer seating for eight (shown), 12 or 15 passengers. The 2500 and 3500 Cargo Vans offer an available five-passenger configuration.

IN COMMAND AND UNDER CONTROL.

We know performance drives your business. That's why Savana offers the widest choice of Professional Grade V-8s in its class, the most powerful heavy-duty diesel¹ and fuel options such as E85,² biofuels and Compressed Natural Gas (CNG).

ENGINES



VORTEC

VORTEC ENGINES These technologically advanced gas-powered engines in the Vortec family range from a 4.8L V-8 to a 6.0L V-8. Each is designed to deliver power, torque and efficiency to meet your needs for confident daily driving, passing and trailering.

VORTEC 4.8L V-8 VVT (L20)
HORSEPOWER: 285 hp @ 5400 rpm
TORQUE: 295 lb-ft @ 4600 rpm

VORTEC 6.0L V-8 VVT (L96) FlexFuel Capable
HORSEPOWER: 342 hp @ 5400 rpm
TORQUE: 373 lb-ft @ 4400 rpm

VORTEC 6.0L V-8 VVT CNG (LC8)
HORSEPOWER: 282 hp @ 4800 rpm
TORQUE: 320 lb-ft @ 4400 rpm

CNG TECHNOLOGY GMC supports the goal of reducing CO₂ emissions by offering CNG technology that significantly reduces vehicle emissions. Check gmffleet.com for availability.

E85 FLEXFUEL CAPABILITY² To give you more choices at the pump, the Vortec 6.0L (L96) V-8 engine is capable of running on E85 ethanol.

VARIABLE VALVE TIMING (VVT) All Vortec V-8 engines use this technology to monitor and adjust valve opening and closing points, giving you near-peak levels of torque across the range of engine speeds.



DURAMAX DIESEL

DURAMAX POWER The most powerful available diesel in its class uses high-pressure direct-injection technology to run at peak efficiency and to start easily in cold temperatures—as quickly as 3.0 seconds at -40° F. The available Duramax 6.6L V-8 Turbo Diesel is coupled to an automatic 6-speed transmission. Together, they form a heavy-duty powertrain producing a remarkable 525 lb-ft of torque at just 1600 rpm.

DURAMAX 6.6L V-8 TURBO DIESEL (LGH)
HORSEPOWER: 260 hp @ 3100 rpm
TORQUE: 525 lb-ft @ 1600 rpm
TRANSMISSION: 6-Speed Automatic

DURAMAX B20 BIODIESEL CAPABILITY The Duramax Diesel is engineered to operate on B20 biodiesel, a mixture of 20 percent biodiesel produced from domestic, renewable resources and 80 percent petroleum diesel.

TRANSMISSIONS

To stand up to punishing stop-and-go driving as well as the demands of high-torque situations such as transporting heavy loads and trailering, Savana features a Professional Grade 6-speed automatic transmission.

HEAVY-DUTY 6-SPEED AUTOMATIC OVERDRIVE TRANSMISSION

An ideal partner for the available heavy-duty engines, the 6L90 6-speed automatic is built for the rigors of the road.

TOW/HAUL MODE This driver-selectable feature of the 6-speed automatic transmission reduces excess shifting when towing or hauling a heavy load.

AUTOMATIC GRADE BRAKING This innovation can be activated in Tow/Haul mode, but disengaged when Driver Shift Control is activated. It detects when you're on a downhill grade then, if necessary, the transmission downshifts to help hold your desired speed.



CHASSIS & SUSPENSION

Our push for capability starts with a fully boxed steel frame. And since hills, ramps and rain-slicked roads make heavy loads feel even heavier, we didn't stop there. We engineered Savana with technologies including the StabiliTrak stability control system and an available Eaton® automatic locking rear differential. No other competitor offers a fully automatic locking rear differential.



135" OR 155" WHEELBASE OPTIONS To help you build a vehicle to suit your needs, Savana is available in two wheelbase configurations that can meet a variety of personal and professional applications.

TRACTION CONTROL SYSTEM To make the most of available traction on many road surfaces, the system measures and compares the speed of your wheels. When it senses one or more wheels starting to spin, it applies individual brakes and manages engine power to slow the wheel down to maintain grip.

FULLY INDEPENDENT FRONT SUSPENSION

An independent coil-over-shock front suspension gives you a smooth ride with responsive handling.

EATON AUTOMATIC LOCKING REAR DIFFERENTIAL

When the available Eaton locker senses a difference in wheel speed between the left and right rear wheels of approximately 100 rpm, it locks both to turn in unison for added traction.

FULLY BOXED HIGH-STRENGTH STEEL FRAME

Welding two overlapping C-channel sections forms a rigid box that resists bending and twisting. This frame helps Savana achieve impressive Gross Vehicle Weight Ratings (GVWR) and Gross Combination Weight Ratings (GCWR) as well as support a maximum conventional trailer weight rating of up to 10,000 lbs² in Cargo and Passenger Van models.

PARALLEL LEAF SPRINGS The rear suspension uses parallel leaf springs that progressively increase their capacity to match payload, so the ride is comfortable when empty and stable when loaded to the limit.

STABILITRAK STABILITY CONTROL SYSTEM

Using a network of sensors to monitor how Savana is responding to steering and braking commands, StabiliTrak determines whether the vehicle is not responding properly. It can pulse the brakes or reduce engine power to help maintain the path being steered.

POWER STEERING The power recirculating ball-type steering gives a constant level of assist, even when operating at the maximum weight rating.

POWER FOUR-WHEEL DISC BRAKES Every model provides the confidence of power four-wheel disc brakes with ABS.

TRAILERING CAPACITY³ The maximum ratings range up to 10,000 lbs in the 2500 and 3500 Series Cargo Vans and the 3500 Passenger Van.

¹With Duramax 6.6L V-8 Turbo Diesel. ²GVWR is 95% ethanol and 5% gasoline. Go to fdic.energy.gov/abbe/fuels to find an E85 station near you. ³Maximum trailer weight ratings are calculated assuming a base vehicle, except for any option(s) necessary to achieve the rating, plus driver. The weight of other optional equipment, passengers and cargo will reduce the maximum trailer weight your vehicle can tow. See your GMC dealer for details.

SAFE. SOUND.

While you're focused on your business, GMC engineers focused on designing Savana to surround you and your passengers with Professional Grade protection. It starts with a reinforced steel safety cage and continues with frontal and head curtain side-impact air bags.¹

REINFORCED STEEL SAFETY CAGE DESIGN

The high-strength steel frame is connected to the main body structure with reinforced body sills, roof pillars and a reinforced floor. This design creates a safety cage that surrounds passengers, helping maintain passenger compartment integrity in the event of a collision.

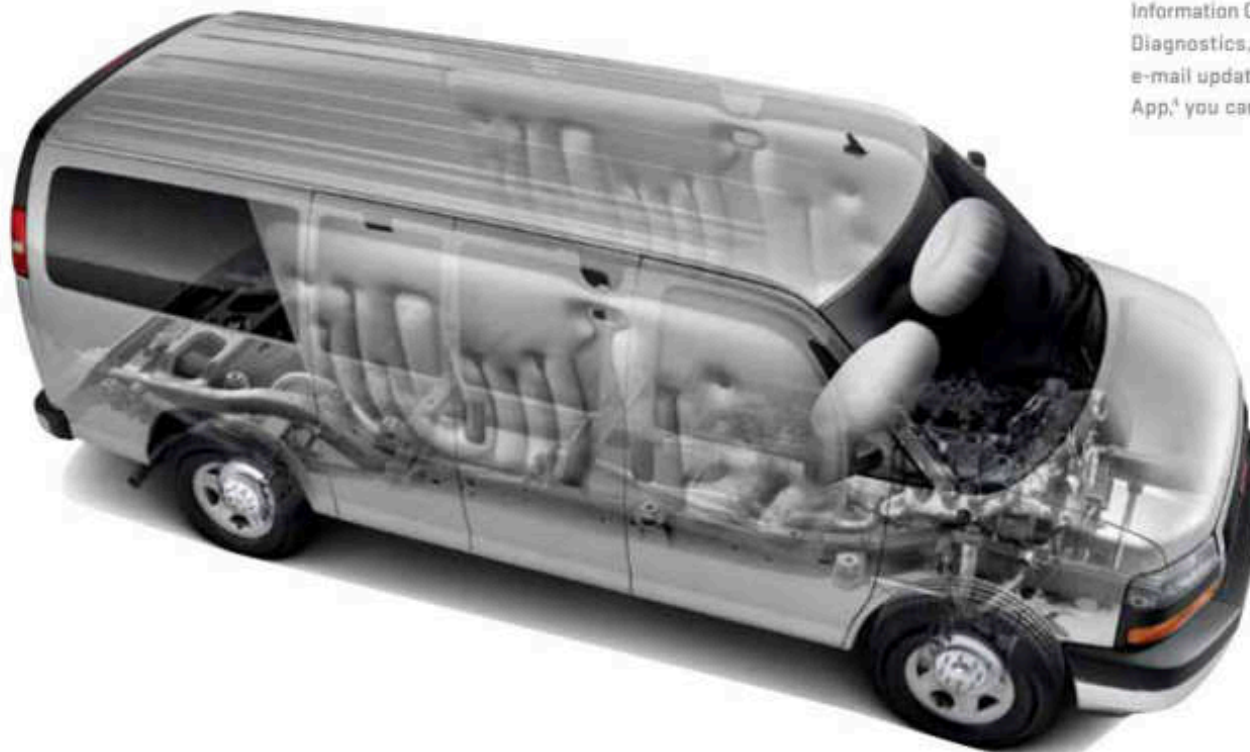
HEAD CURTAIN SIDE-IMPACT AIR BAGS¹

Standard on Passenger Vans and available on Cargo Vans, these air bags unfurl from the roof rail like a protective curtain for the first-, second- and third-row outboard passengers, and can be activated by either rollover sensors or side-impact sensors.

FRONTAL AIR BAGS¹ To help reduce the risk of injury, all models feature driver and front-passenger frontal air bags.

TIRE PRESSURE MONITORING SYSTEM

The system communicates tire pressure to your vehicle² to alert you to the tires' inflation level through the Driver Information Center. If you subscribe to OnStar Vehicle Diagnostics, this information is part of its monthly e-mail update,³ or if you have the OnStar RemoteLink App,⁴ you can check the status instantly.



*Air bag inflation can cause serious injury or death to anyone too close to the air bag when it deploys. Be sure every occupant is properly restrained. Always use safety belts and the correct child restraint for your child's age and size, even with air bags. Even in vehicles equipped with the Passenger Sensing System, children are safer when properly secured in a rear seat in the appropriate infant, child or booster seat. Never place a rear-facing infant restraint in the front seat of any vehicle equipped with an active frontal air bag. See your Owner's Manual and child safety seat instructions for more safety information. ²Does not monitor spare tire. ³Visit onstar.com for coverage map, details and system limitations. ⁴OnStar acts as a link to existing emergency providers. Services vary by model and conditions. Available on select Apple® Android™ BlackBerry® and Windows® devices. Services vary by phone, vehicle and conditions. Requires an active OnStar subscription.

GMC PRO GRADE PROTECTION. PROFESSIONAL GRADE COVERAGE.

Pro Grade Protection is now standard on every 2015 Savana model. From scheduled maintenance to protecting the entire vehicle, you can drive with the knowledge that your operating costs have been reduced.

2-YEAR/24,000-MILE RECOMMENDED SCHEDULED MAINTENANCE¹

3-YEAR/36,000-MILE BUMPER-TO-BUMPER LIMITED WARRANTY²

5-YEAR/100,000-MILE POWERTRAIN LIMITED WARRANTY³

THERE WHEN YOU NEED US.



OnStar is standard on Savana Passenger Vans and available on Savana Cargo Vans. When equipped, OnStar comes with the 5-year Basic Plan⁷ and 6 months of the OnStar Directions & Connections Plan.⁸ Connect to a live OnStar Advisor just by pressing the blue OnStar button on your rearview mirror.

BASIC PLAN Stay connected to everyone and everything that matters with the OnStar Basic Plan on 2015 vehicles, including RemoteLink Key Fob Services,⁷ to remotely start (if factory equipped with remote start) and lock/unlock your car (requires power door locks) and activate your horn and lights. Plus you can get OnStar Vehicle Diagnostics and Dealer Maintenance Notification to make service scheduling simple. For Emergency and Advisor-based services, check out our additional plans.

AUTOMATIC CRASH RESPONSE⁹ In many crashes, built-in sensors can automatically alert an OnStar Advisor who is immediately connected into your vehicle to see if you need help—even if you can't respond.

CRISIS ASSIST During severe weather or other crisis situations, OnStar can provide a quick, central point of contact when you need emergency assistance, navigation help or information.

EMERGENCY SERVICES One push of the red emergency button gives you a priority connection to an Advisor who can direct emergency service providers to your exact location.

ROADSIDE ASSISTANCE¹⁰ If you need an emergency tow, lockout service or help with a flat tire, just push the blue OnStar button and an Advisor can direct help to your exact location—it's all a part of your OnStar subscription.

SECURITY FEATURES¹¹ Remote Door Unlock, Remote Horn and Lights and Stolen Vehicle Assistance provide help when you need it.

HANDS-FREE CALLING¹² WITH VOICE COMMAND Available OnStar Hands-Free Calling is a built-in service in case your cell phone is unavailable, out of range or has a low battery. Just push a button and say the number to make a call.

TURN-BY-TURN NAVIGATION Push your blue OnStar button and tell the Advisor where you want to go, and directions will be downloaded to your Savana.

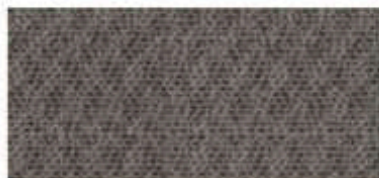
ONSTAR eNAV WITH MAPQUEST.COM¹³ Get a head start on a trip by checking out your destination on mapquest.com and then clicking the "Send" link. Directions will be sent to your Savana.

DESTINATION DOWNLOAD With the optional Navigation System, an Advisor can download directions to your Savana's navigation screen.

¹Covers only scheduled oil changes with filter, tire rotations and 27-point inspections, according to your new vehicle's recommended maintenance schedule, for up to 2 years or 24,000 miles, whichever comes first. Does not include air filters. Maximum of four service events. See participating dealer for other restrictions and complete details. ²Whichever comes first. See dealer for limited warranty details. ³Access is available for 5 years from the date of vehicle delivery and is transferable. Does not include any emergency services or other OnStar services. To cancel RemoteLink Key Fob services or if your vehicle is sold, it is important to contact an OnStar Advisor. See onstar.com/mobile for full details. ⁴Visit onstar.com for coverage map, details and system limitations. OnStar acts as a link to existing emergency service providers. Services vary by model and conditions. Not all vehicles may transmit all crash data. ⁵Roadside service provided by Allstate Roadside Services. ⁶Services vary by model and conditions. ⁷OnStar Hands-Free Calling requires existing OnStar service contract and prepaid minutes. Not available in certain markets. Calls can be made in U.S. and Canada only. Visit onstar.com for coverage map, details and system limitations.

INTERIOR COLORS AND SEATING SURFACES

INTERIOR MATERIALS/CLOTH Standard LT. Available WT, LS

Neutral¹

Medium Pewter

¹Not available on Passenger Van. See your dealer for more details.

INTERIOR MATERIALS/VINYL Standard WT, LS

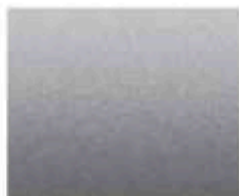
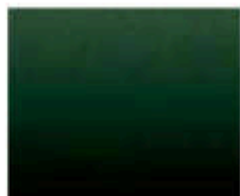
Neutral¹

Medium Pewter

EXTERIOR COLORS



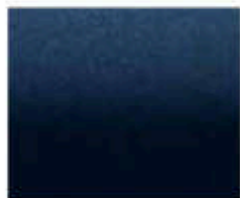
Onyx Black

Cyber Gray Metallic²Bronze Alloy Metallic^{2,1}Quicksilver Metallic²Emerald Green Metallic²

Cardinal Red



Summit White

Deep Blue Metallic²

Wheatland Yellow

¹Extra-cost color. ²Cargo Van models only.

WHEELS

2500 & 3500 SERIES WHEELS



Q05 16" 8-LUG GRAY PAINTED STEEL
STANDARD: 2500/3500 SERIES WT, LS TRIMS



P03 16" 8-LUG GRAY PAINTED STEEL WITH
CHROME CENTER CAP
STANDARD: 2500/3500 SERIES LT TRIM
AVAILABLE: 2500/3500 SERIES WT, LS TRIMS

KEY WT (DRIVER) ▲ STANDARD △ AVAILABLE - NOT AVAILABLE
 LS (LT PASSENGER) ● STANDARD ○ AVAILABLE - NOT AVAILABLE

TRIM LEVELS	WT	LS	LT
MECHANICAL			
ALTERNATOR 145 amps. Standard on diesel models. Also included with rear air conditioning on gas-engine models.	△	○	●
AUXILIARY HEAT GENERATOR Fuel operated. Diesel models only.	△	○	○
BATTERY Dual heavy-duty maintenance-free with 770 cold-cranking amps, rundown protection and retained accessory power. Diesel models only.	▲	●	●
COLD CLIMATE PACKAGE Engine block heater.	△	○	○
DIFFERENTIAL Heavy-duty automatic locking rear.	△	○	○
ENGINES Vortec 4.8L V-8	▲	●	●
Vortec 6.0L V-8 FlexFuel	△	○	○
Vortec 6.0L V-8 Compressed Natural Gas (CNG). See dealer for more details on model and system availability.	△	○	○
Duramax 6.6L V-8 Turbo Diesel. See dealer for more details on model availability.	△	○	○
STABILITRAK Vehicle stability enhancement system and traction control.	▲	●	●
TOW/HAUL MODE SELECTOR	▲	●	●
TRAILERING EQUIPMENT Heavy-duty trailering hitch platform and 7-pin sealed connector.	△	○	○
TRANSMISSION 6-speed automatic. Heavy-duty, electronic Tow/Haul mode.	▲	●	●
TRANSMISSION OIL COOLER External. 2500 and 3500 Series models.	▲	●	●
SEATING			
FRONT RECLINING BUCKET SEATS With vinyl trim.	▲	●	-
With custom cloth trim.	△	○	●
POWER SEAT ADJUSTER Driver and front passenger. 6-way (driver only on WT models).	△	○	○
SEATING CONFIGURATION 2-passenger, WT models only.	▲	-	-
6-passenger, 2500 and 3500 Series WT models only. See your dealer for more details.	△	-	-
8-passenger, 2500 and 3500 Series models.	-	○	○
12-passenger, 2500 and 3500 Series models.	-	●	●
16-passenger, 3500 Series extended-wheelbase models only.	-	○	○
INSTRUMENTATION AND CONTROLS			
8-POINT DIGITAL COMPASS Located in the Driver Information Center. Requires rear air conditioning.	△	○	●
OUTSIDE TEMPERATURE DISPLAY Located in the Driver Information Center. On LS trim, requires Chrome Appearance Package.	△	○	●
REAR VISION CAMERA SYSTEM With inside rearview mirror display. If Touch-Screen Navigation [®] is ordered, camera display is on NAV screen.	△	○	○
STEERING WHEEL Leather-wrapped; includes steering-wheel-mounted audio controls. Requires Convenience Package (Z03) and uplevel CD with MP3 audio system or Touch-Screen Navigation System. ⁴	△	○	○
TILT-ADJUSTABLE STEERING WHEEL Includes cruise control. Requires Convenience Package (Z03) on WT and LS models. Standard on 3500 Series Passenger Van models.	△	○	●
ULTRASONIC REAR PARK ASSIST With audible warning. Requires AM/FM stereo with CD/MP3 player or AM/FM stereo with CD/DVD/MP3 player and Touch-Screen Navigation. ⁴	△	○	○
INTERIOR/CONVENIENCE			
AIR CONDITIONING Front.	▲	●	●
Rear. Requires auxiliary lighting on LS models. Standard on 3500 Series Passenger Van extended-wheelbase models.	△	○	●
CONVENIENCE PACKAGE (Z03) Tilt-wheel and cruise control. Standard on 3500 Series Passenger Van models.	△	○	●
DELUXE CONSOLE With swing-out storage.	△	○	●
LIGHTING Includes 3 roof-mounted LED cargo lamps. WT trim only.	▲	-	-
PADDED VISORS Driver and passenger side.	▲	●	●
With vanity mirrors (illuminated on passenger side). Standard on 3500 Series extended-wheelbase models.	-	○	●
POWER OUTLET 110-volt.	▲	●	●

TRIM LEVELS	WT	LS	LT
INTERIOR/CONVENIENCE continued			
POWER WINDOWS	▲	●	●
REAR AUXILIARY HEATER WT and LS trim; included with rear air conditioning. Standard on 3500 Series Passenger Van extended-wheelbase models.	△	○	●
REAR-WINDOW DEFOGGER	△	○	○
REMOTE KEYLESS ENTRY Includes 2 transmitters.	△	○	●
REMOTE START Requires remote keyless entry on WT and LS models.	△	○	○
ENTERTAINMENT/COMMUNICATION/NAVIGATION			
AM/FM STEREO With MP3 player, seek-and-scan, digital clock and 2 front-door speakers.	△	●	●
With MP3 player, USB [®] port, seek-and-scan, auxiliary input, digital clock and 2 front-door speakers.	△	○	○
With CD/SiriusXM-capable/MP3 player and USB port. ⁵ Includes 6 speakers on Passenger Van models.	△	○	○
With CD/DVD/SiriusXM-capable/MP3 player, USB port ⁶ and Touch-Screen Navigation. ⁴ Includes 6 speakers on Passenger Van models.	△	○	○
BLUETOOTH[®] FOR PHONE Personal call phone connectivity.	△	○	○
ONSTAR 5-year Basic Plan and 6-month Directions 9 Connections Plan ⁶ .	△	●	●
SIRIUSXM SATELLITE RADIO⁵ 3 trial months included.	△	○	○
EXTERIOR STYLING AND FUNCTIONALITY			
CHROME APPEARANCE PACKAGE Chrome front and rear bumpers and grille; includes halogen composite headlamps.	△	○	●
DAYTIME RUNNING LAMPS	▲	●	●
FRONT AND REAR BUMPERS Black (includes rear step pad).	▲	●	-
Chrome (includes rear step pad).	△	○	●
OUTSIDE REARVIEW MIRRORS Manual foldaway.	▲	●	●
Power-operated, heated, black. Requires Convenience Package (Z03). Included with Savana Pro Plus Package on WT trim.	△	○	○
SAVANA PRO Includes 3 remote-release side-access panels. See your dealer for more details.	△	-	-
SAVANA PRO PLUS Requires Savana Pro side-access panels. Includes access panel lights, chrome front and rear bumpers, chrome grille with dual composite halogen headlamps, chrome center cap wheel trim, auxiliary lighting and outside heated, power-adjustable black mirrors.	△	-	-
SLIDING PASSENGER-SIDE DOOR On LS trim, requires rear air conditioning.	△	○	○
SOLAR-RAY DEEP-TINTED WINDOWS	△	●	●
SWING-OUT PASSENGER-SIDE DOORS	▲	●	●
SAFETY AND SECURITY			
AIR BAGS[®] Frontal, for driver and front passenger.	▲	●	●
Head curtain side-impact for first-, second- and third-row outboard occupants.	△	●	●
ENHANCED-TECHNOLOGY GLASS Rearmost side windows, 12- and 16-passenger models only.	-	●	●
LATCH CHILD SEAT ANCHOR SYSTEM	-	●	●
PASS-KEY III THEFT-DETERRENT SYSTEM	▲	●	●
POWER DOOR LOCKS With lockout protection.	▲	●	●
SIDE STEEL DOOR BEAMS	▲	●	●
TIRE PRESSURE MONITORING SYSTEM Does not monitor spare tire.	▲	●	●

⁴Map coverage available in the United States, U.S. Virgin Islands, Puerto Rico and Canada. ⁵Not compatible with all devices. ⁶If you subscribe after your trial period, subscriptions are continuous until you call SiriusXM to cancel. See SiriusXM Customer Agreement for complete terms at siriusxm.com. Other fees and taxes will apply. All fees and programming subject to change. For more information about NavTraffic, visit siriusxm.com/navtraffic. XM satellite service is available only to those in the 48 contiguous USA and DC. ⁷Go to gmtdaconnect.com to find out which phones are compatible with the vehicle. ⁸Visit onstar.com for details and system limitations. ***A NOTE ON CHILD SAFETY:** Always use safety belts and the correct child restraint for your child's age and size, even with air bags. Even in vehicles equipped with the Passenger Sensing System, children are safer when properly secured in a rear seat in the appropriate infant, child or booster seat. Never place a rear-facing infant restraint in the front seat of any vehicle equipped with an active frontal air bag. See your vehicle Owner's Manual and child safety seat instructions for more safety information.

GMC BUSINESS CHOICE

GMC Business Choice is an incentive program designed for business owners like you who rely on their vehicles for their day-to-day operations. It's available when you purchase or lease an eligible, new GMC vehicle, and it offers several options including the GM Accessory or Upfit Cash Allowance.

For complete program requirements, including information regarding offers, vehicles, equipment, options, warranties and ordering information, consult with your GMC dealer, or visit gmbusinesschoice.com.

GMC BUSINESS ELITE

Business Elite dealers provide you with a team of expert sales account specialists to help you select the right vehicles for the job. They stock a diverse lineup of vehicles that are ready for sale at a moment's notice. Plus, every Business Elite service department has the facilities, tools, equipment and certified technicians to help maintain your vehicle fleet. Learn more about both of these programs at gmfleet.com.


PASSENGER/CARGO VAN SPECIFICATIONS
ENGINE SPECIFICATIONS

	AXLE RATIO	VORTEC 4.8L V-8	VORTEC 6.0L V-8	6.0L V-8 GASEOUS	DURAMAX 6.6L V-8 TURBO DIESEL
SAE net horsepower @ 1900		285 @ 5400	342 @ 5400	282 @ 4800	250 @ 3100
SAE net torque @ 2000 (lb-ft)		295 @ 4800	373 @ 4400	320 @ 4400	525 @ 1600

ENGINE/MODEL AVAILABILITY

2500 Series (RWD)		●	○	○	○ (Cargo only)
3500 Series (RWD)		●	○	○	○

**MAX. TRAILER WEIGHT IN LBS¹
(PASSENGER/CARGO)**

2500 Series (regular wheelbase)	3:42 (3.54 Diesel)	6700/7400	9800/10,000	9500/9900	~710,000
2500 Series (extended wheelbase)	3:48 (3.54 Diesel)	~7700	~710,000	~7500	~710,000
3500 Series (regular wheelbase)	3:42 (3.54 Diesel)	6700/7400	8700/10,000	~9900	10,000/10,000
3500 Series (extended wheelbase)	3:48 (3.54 Diesel)	8400/7700	9500/10,000	9000/9600	8,700/10,000

STANDARD TECHNICAL DATA

	2500 SERIES	3500 SERIES
Gross Vehicle Weight Rating (lbs) ²	8000	8800/9900
Front Suspension (RWD)		Independent coil springs—all series
Front Suspension (AWD)		Independent torsion bar—all series
Front Axle Capacity (lbs)	4100	4300/4600
Rear Suspension		Multileaf springs—all series
Rear Axle Capacity (lbs)	5300 ³	5004
Brakes		4-wheel disc with antilock system—all series
Transmission: Electronic automatic with overdrive, tow/Haul mode	5-speed heavy-duty	6-speed heavy-duty
Cargo Capacity with Seats Removed (regular wheelbase) ⁴		216.2 cu. ft. Passenger (270.4 cu. ft. Cargo)
Cargo Capacity with Seats Removed (extended wheelbase) ⁴		252.8 cu. ft. Passenger (313.9 cu. ft. Cargo)
Fuel Tank Capacity		31 gallons approx., all series

KEY ● STANDARD ○ AVAILABLE — NOT AVAILABLE

¹Maximum trailer weight ratings are calculated assuming a base vehicle, except for any option(s) necessary to achieve the rating, plus driver. The weight of other optional equipment, passengers and cargo will reduce the maximum trailer weight your vehicle can tow. See your GMC dealer for details. ²When properly equipped, includes weight of vehicle, passengers, cargo and equipment. ³Cargo and load capacity limited by weight and distribution.

PRO GRADE PROTECTION

For 2015, Savana comes with the Pro Grade Protection Plan, which includes 2-year/24,000-mile recommended scheduled maintenance,¹ 3-year/36,000-mile bumper-to-bumper limited warranty² and 5-year/100,000-mile powertrain limited warranty.³ Roadside Assistance and Courtesy Transportation.

Starting with the owner orientation—and full tank of gas—you receive when you take possession of your Savana to the **24-Hour Roadside Assistance, Courtesy Transportation and Travel Benefits**, you receive a portfolio of owner privileges that lasts throughout your warranty. For expert product information, Roadside Assistance or other services, call 1-800-GMC-8762.

TRAVEL BENEFITS AND ROADSIDE ASSISTANCE Available around the clock; trip routing service, a program for reimbursement for trip interruption due to necessary warranty repairs, towing, flat tire change, jump-starts and more for 5 years or 100,000 miles (whichever comes first).

COURTESY TRANSPORTATION Available at participating dealers: shuttle service, reimbursement of certain public transportation or fuel expenses for overnight warranty repairs and courtesy rental for overnight work repairs. See your dealer for details.

GMC OWNER CENTER A complimentary, one-stop resource to enhance your GMC ownership experience. It's easy to sign up. Just go to gm.com/gmownercenter/gmc.

ONSTAR



OnStar is a core asset of your Savana. Benefiting from more than a decade of innovative development, it is both a highly advanced technology—fully integrated within the vehicle—and a warm human service. Available on most Savana models are 5 months of the OnStar

Directions & Connections Plan, including the convenience of available Hands-Free Calling.⁴ It also includes Automatic Crash Response, Stolen Vehicle Assistance, link to Emergency Services, Roadside Assistance, Remote Door Unlock, OnStar Vehicle Diagnostics, Crisis Assist and Remote Horn and Lights. OnStar services require vehicle electrical system (including battery), wireless service and GPS satellite signals to be available and operating for features to function properly. OnStar acts as a link to existing emergency service providers. Not all vehicles may transmit all crash data. Visit onstar.com for coverage maps, details and system limitations. Services vary with conditions.

SIRIUSXM SATELLITE RADIO



SiriusXM Satellite Radio⁵ is available on all Savana models. It includes 3 trial months of service. SiriusXM Satellite Radio makes your drive come alive with commercial-free music channels from virtually every genre, artist-dedicated channels, live performances and more. Tune in to live play-by-play from the biggest sports, exclusive entertainment from top personalities, compelling talk, hilarious comedy, world-class news, local traffic and weather and family-friendly programming. Welcome to the world of satellite radio. Visit siriusxm.com for details.

GMC CERTIFIED SERVICE



To help your Savana live up to its performance promise, GMC Certified Service—found exclusively at your GMC dealer—is there. With all the engineering excellence in Savana, GM-trained technicians have the expertise to care for all of it.

ADDITIONAL NOTES

A NOTE ON CHILD SAFETY Always use safety belts and the correct child restraint for your child's age and size, even with air bags. Even in vehicles equipped with the Passenger Sensing System, children are safer when properly secured in a rear seat in the appropriate infant, child or booster seat. Never place a rear-facing infant restraint in the front seat of any vehicle equipped with an active frontal air bag. See your vehicle Owner's Manual and child safety seat instructions for more safety information.

TRAILERING AND OFF-ROAD INFORMATION Please carefully review the Owner's Manual for important safety information about trailering or off-road driving in your vehicle.

FLEET ORDERS Some standard content may be deleted with fleet orders. See dealer for details.

ENGINES GMC products are equipped with engines produced by GM Powertrain or other suppliers to GM worldwide. The engines in GMC products may also be used in other GM makes and models.

GMC.COM See more of Savana on our Web site: gm.com/savana. More photos and information; hot links to related subjects; convenient dealer locator; pricing guide; spec out your own vehicle. Or call 1-800-GMC-8762.

BUYPOWER CARD



Now it's even easier to get into the GMC of your dreams. Every purchase gives you Earnings redeemable toward part or even all of a new GMC Chevrolet, Buick or Cadillac. Every year, enjoy 5 percent Earnings on your first \$5,000 in purchases and 2 percent unlimited Earnings after that. No expiration on Earnings and no limit on how much you can earn or redeem. Learn more at buypowercard.com. YOUR CARD IS THE KEY.TM

IMPORTANT WORDS ABOUT THIS CATALOG We have tried to make this catalog comprehensive and factual. We reserve the right, however, to make changes at any time, without notice, in prices, colors, materials, equipment, specifications, models and availability. Specifications, dimensions, measurements, ratings and other numbers in this catalog and other printed materials provided at the dealership or affixed to vehicles are approximate based upon design and engineering drawings and prototypes and laboratory tests. Your vehicle may differ due to variations in manufacture and equipment. Since some information may have been updated since the time of printing, please check with your GMC dealer for complete details. GMC reserves the right to lengthen or shorten the model year for any product for any reason, or to start and end model years at different times. All competitive claims are based on the latest information available at the time of printing and GM Large Van segment.

AN IMPORTANT NOTE ABOUT ALTERATIONS AND WARRANTIES Installations or alterations to the original equipment vehicle (or chassis) as distributed by General Motors are not covered by the General Motors New Vehicle Limited Warranty. The special body company, assembler, equipment installer or upfitter is solely responsible for warranties on the body or equipment and any alterations (or any affect of the alterations) to any of the parts, components, systems or assemblies installed by GM. General Motors is not responsible for the safety or quality of design features, materials or workmanship of any alterations by such suppliers.

NEW-VEHICLE LIMITED WARRANTY All GMC light-duty vehicles come with a fully transferable, non-deductible 5-year/100,000-mile (whichever comes first) Powertrain Limited Warranty. GM vehicles registered in the USA (see also covered for 3 years or 36,000 miles (whichever comes first). Coverage includes tires and towing to your nearest GMC dealership. Repairs will be made to correct any vehicle defect and most warranty repairs will be made at no charge. In addition, rust-through corrosion will be covered for 6 years or 100,000 miles (whichever comes first). Savana also comes with a 2-year/24,000-mile (whichever comes first) recommended scheduled maintenance plan.¹ See dealer for details.

ASSEMBLY GMC vehicles and their components are assembled or produced by different operating units of General Motors, its subsidiaries or suppliers to GM worldwide. We sometimes find it necessary to produce GMC vehicles with different or differently sourced components than originally scheduled. Since some options may be unavailable when your vehicle is assembled, we suggest that you verify that your vehicle includes the equipment you ordered or, if there are changes, that they are acceptable to you.

GMMOBILITY.COM (1-800-323-9935) GM Mobility offers financial assistance for eligible adaptive equipment to make automotive travel easier for persons with disabilities or special transportation needs. To learn more about special GM Mobility offers, visit gmmobility.com.



FACEBOOK.COM/GMC



TWITTER.COM/THISISGMC



YOUTUBE.COM/GMC

¹Covers only scheduled oil changes with filter, tire rotations and 27-point inspection, according to your new vehicle's recommended maintenance schedule for up to 2 years or 24,000 miles, whichever comes first. Does not include air filters. Maximum of four service events. See participating dealers for other restrictions and complete details. ²Whichever comes first. See dealer for limited warranty details. ³Visit onstar.com for coverage map, details and system limitations. OnStar Hands-Free Calling requires existing OnStar service contract and prepaid minutes. Not available in certain markets. Calls can be made in U.S. and Canada only. ⁴If you subscribe after your trial period, subscriptions are continuous until you call SiriusXM to cancel. See SiriusXM Customer Agreement for complete terms at siriusxm.com. Other fees and taxes will apply. All fees and programming subject to change. For more information about NavTraffic, visit siriusxm.com/navtraffic. XM satellite service is available only to those in the 48 contiguous USA and DC.

©2014 General Motors. All rights reserved. GM, the GM logo, GMC, the slogans, emblems, vehicle model names, vehicle body designs and other marks appearing in this catalog are the trademarks and/or service marks of General Motors, its subsidiaries, affiliates or licensors. Facebook is a registered trademark of Facebook, Inc. Twitter is a registered trademark of Twitter, Inc. YouTube is a registered trademark of Google, Inc. Sirius, XM and all related marks and logos are trademarks of SiriusXM Radio, Inc.

