

# SIERRA LIMITED

2022 GMC

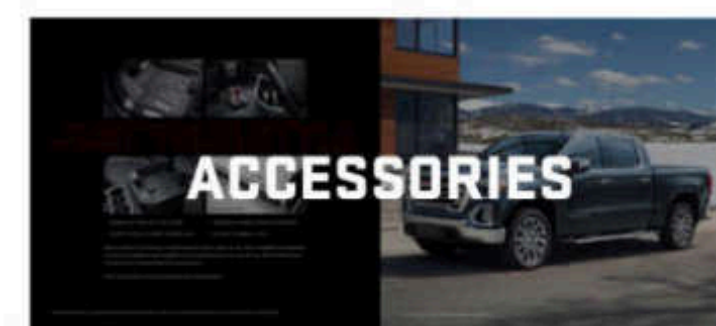
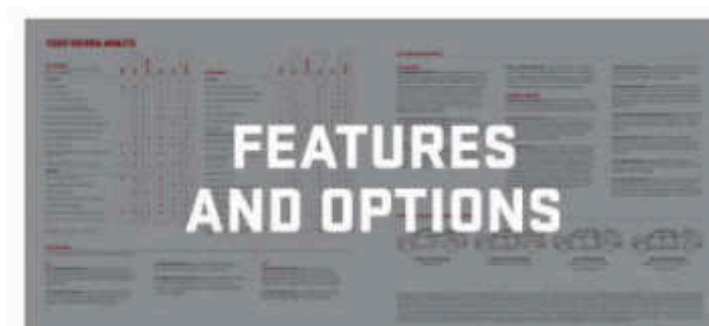
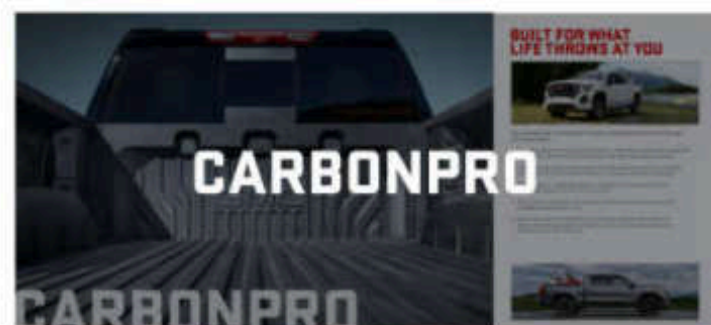
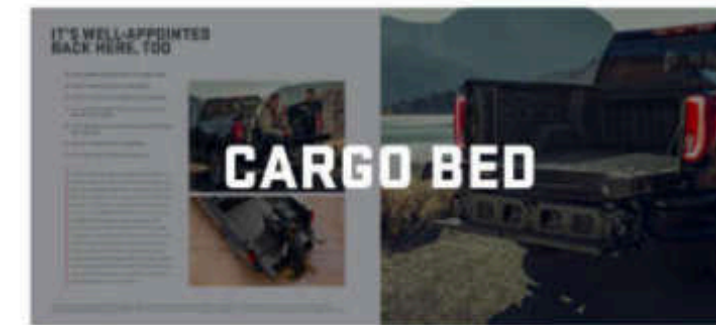
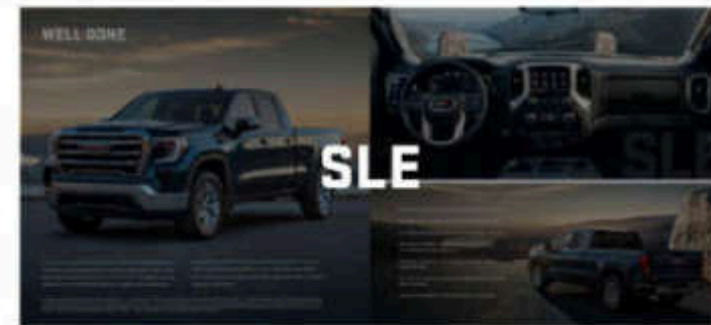
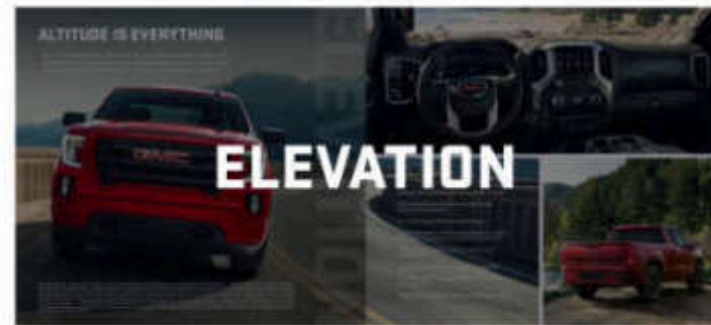


**GMC**

WE ARE PROFESSIONAL GRADE

# SIERRA

CONTENTS



**LIVE  
LIKE A PRO**



Pros are always finding ways to achieve more. So are GMC engineers. Sierra Limited is a prime example. Its strong, bold stance, revolutionary capabilities, eye-opening technologies and remarkable power allow Sierra Limited's actions to speak loudly.

Experience Professional Grade—the 2022 GMC Sierra 1500 Limited.

Due to current supply-chain shortages, certain features shown throughout this catalog, including on the cover, have limited or late availability, or are no longer available. See the window label or a dealer regarding the features on an individual vehicle.



## OVER AND ABOVE

The 2022 Sierra Limited Denali makes a big statement while delivering advanced capability and innovative technologies. And revolutionizing how you work, the World's First Six-Function GMC MultiPro™ Tailgate performs a combination of functions that helps you load, unload and access the cargo bed with ease. Sierra Limited Denali goes further by adding an innovative premium suspension with Adaptive Ride Control. It provides a first-class ride experience by monitoring both the road and Sierra in real time, automatically adjusting when hauling and trailering for exceptional comfort and responsiveness.



Due to current supply chain shortages, certain features shown have limited or late availability, or are no longer available. See the window label or a dealer regarding the features on an individual vehicle.

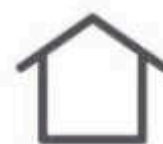
# DENALI



- | WORLD'S FIRST SIX-FUNCTION GMC MULTIPRO TAILGATE
- | INDUSTRY-FIRST CARBONPRO™ CARBON-FIBER COMPOSITE BED IS AVAILABLE
- | PREMIUM SUSPENSION WITH ADAPTIVE RIDE CONTROL
- | HIGH-INTENSITY LED HEADLAMPS
- | SIGNATURE CHROME DENALI GRILLE
- | CHROME VERTICAL RECOVERY HOOKS<sup>1</sup>
- | 6.2L GAS V8 AND 3.0L DURAMAX TURBO DIESEL ENGINES ARE AVAILABLE
- | 10-SPEED AUTOMATIC TRANSMISSION IS AVAILABLE
- | EXCLUSIVE 22" WHEELS INCLUDED IN DENALI RESERVE AND DENALI PREMIUM PACKAGES

<sup>1</sup>To avoid the risk of injury, never use recovery hooks to tow a vehicle. For more information, see the Recovery Hooks section of your Owner's Manual.





SIERRA LIMITED DENALI OFFERS:

- MULTICOLOR 15" DIAGONAL HEAD-UP DISPLAY AND REAR CAMERA MIRROR<sup>1</sup> ARE AVAILABLE
- UP TO 15 AVAILABLE CAMERA VIEWS,<sup>2</sup> INCLUDING TRANSPARENT TRAILER VIEW
- GMC PROGRADE™ TRAILERING SYSTEM WITH IN-VEHICLE TRAILERING APP<sup>3</sup>
- PREMIUM GMC INFOTAINMENT SYSTEM WITH NAVIGATION<sup>4</sup> AND AVAILABLE IN-VEHICLE APPS<sup>5</sup> SUCH AS AMAZON ALEXA BUILT-IN<sup>6</sup> AND SPOTIFY™<sup>7</sup>
- SIRIUSXM® WITH 360L<sup>8</sup>—INCLUDES 3-MONTH TRIAL SUBSCRIPTION
- BOSE® PREMIUM AUDIO SYSTEM WITH RICHBASS WOOFER
- ADAPTIVE CRUISE CONTROL<sup>9</sup> IS AVAILABLE
- PERFORATED FORGE LEATHER SEATING SURFACES WITH CONTRASTING STITCH PATTERN, AUTHENTIC OPEN-PORE ASH WOOD, BRUSHED ALUMINUM TRIM AND CHROME ACCENTS

Inside Sierra Limited Denali, advanced technologies abound. There's an available multicolor 15" diagonal Head-Up Display (HUD) and a Rear Camera Mirror.<sup>1</sup> The HUD projects vehicle data, available active safety information and phone and infotainment sources onto the windshield. Sierra also offers the ProGrade Trailering System and up to 15 available camera views.<sup>2</sup> One of those views is the available industry-first transparent trailer view, which helps you to virtually see right through a compatible trailer to detect objects behind it.



Due to current supply-chain shortages, certain features shown on this spread have limited or late availability, or are no longer available. See the window label or a dealer regarding the features on an individual vehicle.

<sup>1</sup>Safety or driver-assistance features are no substitute for the driver's responsibility to operate the vehicle in a safe manner. Read the vehicle Owner's Manual for important feature limitations and information. <sup>2</sup>Some camera views require available accessory camera and installation. Not compatible with all trailers. See your dealer for details. Safety or driver-assistance features are no substitute for the driver's responsibility to operate the vehicle in a safe manner. Read the vehicle Owner's Manual for important feature limitations and information. <sup>3</sup>App functionality and features vary with vehicle equipment and trim level. Data connection may be required. Some features require active service plan and working electrical system. User terms and limitations apply. <sup>4</sup>Functionality varies by model. Full functionality requires compatible Bluetooth® and smartphone, and USB connectivity for some devices. Map coverage available in the United States, Puerto Rico and Canada. <sup>5</sup>Available on select 2017 model year and newer GM vehicles with compatible hardware. Third-party trademarks are the property of their respective third-party owners and used under agreement. Requires active service plan and paid AT&T® vehicle data plan. See onstar.com for details and limitations. <sup>6</sup>Functionality is subject to limitations and varies by vehicle, infotainment system and location. Select service plan required. Certain Alexa Skills require account linking to use. Amazon, Alexa and all related marks are trademarks of Amazon.com, Inc., or its affiliates. See onstar.com for additional details. <sup>7</sup>Spotify app requires active Spotify account. Visit spotify.com/auto on your smartphone, tablet or computer for terms and to set up an account. Available on select model year 2018 and newer infotainment systems with compatible hardware. Select service plan required. <sup>8</sup>Some features, including streaming content and listening recommendations, require GM connected vehicle services. GM connected vehicle services vary by vehicle model and require active service plan, working electrical system, cell reception and GPS signal. See onstar.com for details and limitations.

# PAVEMENT IS OVERRATED

Sierra Limited AT4 includes a 2" factory-installed suspension lift for elevated ground clearance to help overcome rough terrain. Explore the unbeaten path with the standard 3.0L Duramax Turbo Diesel engine or available 6.2L gas V8 with 10-speed automatic transmission. The Traction Select System allows you to choose Off-Road mode for optimum transmission, throttle and StabiliTrak performance on unpaved surfaces.

To help provide more traction in snow, mud, ice, sand or gravel, AT4 includes an automatic locking rear differential. Further helping smooth out the rough spots are Rancho® monotube shocks, while metal skid plates help protect the front underbody.



Due to current supply chain shortages, certain features shown on this spread have limited or late availability, or are no longer available. See the window label or a dealer regarding the features on an individual vehicle. To avoid the risk of injury, never use recovery hooks to tow a vehicle. For more information, see the Recovery Hooks section of your Owner's Manual.

# AT4

- FACTORY-INSTALLED 2" SUSPENSION LIFT
- 2-SPEED AUTOTRAC TRANSFER CASE, AUTOMATIC LOCKING REAR DIFFERENTIAL AND SKID PLATES
- OFF-ROAD TUNED RANCHO MONOTUBE SHOCK ABSORBERS
- HIGH-CLEARANCE OFF-ROAD STEPS ARE AVAILABLE
- DISTINCT EXTERIOR DESIGN WITH BLACK CHROME ACCENTS
- RED VERTICAL RECOVERY HOOKS<sup>1</sup>
- WORLD'S FIRST SIX-FUNCTION GMC MULTIPRO TAILGATE
- INDUSTRY-FIRST CARBONPRO CARBON-FIBER COMPOSITE BED IS AVAILABLE
- STANDARD OFF-ROAD GOODYEAR® WRANGLER DURATRAC® TIRES; GOODYEAR WRANGLER TERRITORY TIRES ARE AVAILABLE
- STANDARD 3.0L DURAMAX TURBO DIESEL ENGINE; A 6.2L V8 IS AVAILABLE



## ROUGHING IT SHOULDN'T FEEL ROUGH



### SIERRA LIMITED AT4 OFFERS:

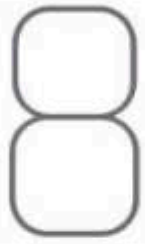
- MULTICOLOR 15" DIAGONAL HEAD-UP DISPLAY AND REAR CAMERA MIRROR<sup>1</sup> ARE AVAILABLE
- UP TO 15 AVAILABLE CAMERA VIEWS,<sup>2</sup> INCLUDING SURROUND VIEW
- PREMIUM AT4 INTERIOR IN JET BLACK WITH KALAHARI ACCENTS
- PREMIUM ALL-WEATHER FLOOR LINERS WITH REMOVABLE CARPET INSERTS
- HEATED AND VENTILATED FRONT SEATS<sup>3</sup>

Inside AT4, you'll find an athletic, purposeful interior designed for your active lifestyle. It features unique darkened trim and decor, perforated front leather seating surfaces in Jet Black with Kalahari accents and smart storage compartments.

In addition, the available multicolor 15" diagonal Head-Up Display projects key information onto the windshield to help you keep your eyes on the road. Information includes an Off-Road Inclinometer that shows the fore-and-aft tilt, front tire angle and left-and-right tilt. And for the added views helpful in maneuvering through rough terrain, there are up to 15 available camera views<sup>2</sup> including Surround, Front and Rear Views.

<sup>1</sup>Safety or driver-assistance features are no substitute for the driver's responsibility to operate the vehicle in a safe manner. Read the vehicle Owner's Manual for important feature limitations and information. <sup>2</sup>Safety or driver-assistance features are no substitute for the driver's responsibility to operate the vehicle in a safe manner. Read the vehicle Owner's Manual for important feature limitations and information. Some camera views require available accessory camera and installation. Not compatible with all trailers. See your dealer for details. <sup>3</sup>Feature will not function on certain models without dealer retrofit. See dealer for details.





# POWERED BY INNOVATION

Sierra Limited SLT delivers what you demand in a truck without sacrificing style, refinement, capability, power or efficiency. Outside, its tall stance and large bed are highlighted by high-intensity LED headlamps, LED taillamps and chrome accents. SLT is powered by a 355-hp 5.3L V8 engine with an 8-speed automatic transmission on 2WD models and a 10-speed automatic transmission on 4WD models. Need more power? Choose the available 6.2L gas V8 or 3.0L Duramax Turbo Diesel engines.

# SLT



- | WORLD'S FIRST SIX-FUNCTION GMC MULTIPRO TAILGATE
- | CARGO BED VOLUME RANGES FROM 62.9 CU. FT. TO 71.7 CU. FT.<sup>1</sup>
- | REAR BUMPER WITH LARGE CORNER STEPS
- | 5.3L V8 ENGINE WITH DYNAMIC FUEL MANAGEMENT
- | 6.2L GAS V8 AND 3.0L DURAMAX TURBO DIESEL ENGINES ARE AVAILABLE
- | 10-SPEED AUTOMATIC TRANSMISSION IS AVAILABLE
- | X31 OFF-ROAD PACKAGE IS AVAILABLE

Due to current supply-chain shortages, certain features shown on this spread have limited or late availability, or are no longer available. See the window label or a dealer regarding the features on an individual vehicle.

<sup>1</sup>Cargo and load capacity limited by weight and distribution.





Due to current supply-chain shortages, certain features shown on this spread have limited or late availability, or are no longer available. See the window label or a dealer regarding the features on an individual vehicle.



## COME FOR THE VIEW. STAY FOR THE RIDE.

### SIERRA LIMITED SLT OFFERS:

- GMC PROGRADE TRAILERING SYSTEM WITH IN-VEHICLE TRAILERING APP<sup>1</sup>
- STORAGE AREAS IN REAR SEATBACK AND UNDER REAR SEAT
- PREMIUM GMC INFOTAINMENT SYSTEM<sup>2</sup> WITH AVAILABLE IN-VEHICLE APPS<sup>3</sup> SUCH AS AMAZON ALEXA BUILT-IN<sup>4</sup> AND SPOTIFY<sup>5</sup>
- SIRIUSXM WITH 360L<sup>6</sup>—INCLUDES 3-MONTH TRIAL SUBSCRIPTION
- HEATED LEATHER-WRAPPED STEERING WHEEL<sup>7</sup>
- HEATED AND VENTILATED FRONT LEATHER-APPOINTED BUCKET SEATS<sup>8</sup> ARE AVAILABLE

Sierra Limited SLT heightens your driving experience with comfortable seating and a tall, commanding view. It provides controls—such as available 10-way power front leather-appointed bucket seats—and guidance—such as an in-vehicle Trailering App<sup>1</sup> and available safety and driver-assistance technologies—that help put you in command.

<sup>1</sup>App functionality and features vary with vehicle equipment and trim level. Data connection may be required. Some features require active service plan and working electrical system. User terms and limitations apply. <sup>2</sup>Functionality varies by model. Full functionality requires compatible Bluetooth and smartphone, and USB connectivity for some devices. <sup>3</sup>Available on select 2017 model year and newer GM vehicles with compatible hardware. Third-party trademarks are the property of their respective third-party owners and used under agreement. Requires active service plan and paid AT&T vehicle data plan. See [onstar.com](http://onstar.com) for details and limitations. <sup>4</sup>Functionality is subject to limitations and varies by vehicle, infotainment system and location. Select service plan required. Certain Alexa Skills require account linking to use. Amazon, Alexa and all related marks are trademarks of Amazon.com, Inc., or its affiliates. See [onstar.com](http://onstar.com) for additional details. <sup>5</sup>Spotify app requires active Spotify account. Visit [spotify.com/autof](http://spotify.com/autof) on your smartphone, tablet or computer for terms and to set up an account. Available on select model year 2018 and newer infotainment systems with compatible hardware. Select service plan required. <sup>6</sup>Some features, including streaming content and listening recommendations, require GM connected vehicle services. GM connected vehicle services vary by vehicle model and require active service plan, working electrical system, cell reception and GPS signal. See [onstar.com](http://onstar.com) for details and limitations. <sup>7</sup>Feature will not function on certain models without dealer retrofit. See dealer for details.



## ALTITUDE IS EVERYTHING

Sierra Limited Elevation goes all in with a bold presence, telling the world something unique is headed its way, while keeping you well-connected with an array of technologies linking you to your Elevation. And the revolutionary functionality of the GMC MultiPro Tailgate raises Sierra Limited Elevation to new heights.



Due to current supply-chain shortages, certain features shown have limited or late availability, or are no longer available. See the window label or a dealer regarding the features on an individual vehicle.

- WORLD'S FIRST SIX-FUNCTION GMC MULTIPRO TAILGATE
- BOLD EXTERIOR WITH BLACK GRILLE INSERTS AND BODY-COLOR SURROUND
- 20" GLOSS-BLACK PAINTED ALUMINUM WHEELS
- GMC INFOTAINMENT SYSTEM<sup>1</sup> WITH AVAILABLE IN-VEHICLE APPS<sup>2</sup> SUCH AS AMAZON ALEXA BUILT-IN<sup>3</sup> AND SPOTIFY<sup>4</sup>
- SIRIUSXM<sup>5</sup>—INCLUDES 3-MONTH TRIAL SUBSCRIPTION
- 2.7L TURBO ENGINE WITH ACTIVE FUEL MANAGEMENT
- 5.3L GAS V8 OR 3.0L DURAMAX TURBO DIESEL ENGINES ARE AVAILABLE
- TRACTION SELECT SYSTEM WITH AVAILABLE TERRAIN MODE

<sup>1</sup>Functionality varies by model. Full functionality requires compatible Bluetooth and smartphone, and USB connectivity for some devices. <sup>2</sup>Available on select 2017 model year and newer GM vehicles with compatible hardware. Third-party trademarks are the property of their respective third-party owners and used under agreement. Requires active service plan and paid AT&T vehicle data plan. See onstar.com for details and limitations. <sup>3</sup>Functionality is subject to limitations and varies by vehicle, infotainment system and location. Select service plan required. Certain Alexa Skills require account linking to use. Amazon, Alexa and all related marks are trademarks of Amazon.com, Inc. or its affiliates. See onstar.com for additional details. <sup>4</sup>Spotify step requires active Spotify account. Visit spotify.com/into on your smartphone, tablet or computer for terms and to set up an account. Available on select model year 2018 and newer infotainment systems with compatible hardware. Select service plan required. <sup>5</sup>If you decide to continue service after your trial, your selected subscription plan will automatically renew thereafter. You will be charged at then-current rates. Fees and taxes apply. To cancel, you must call SiriusXM at 1-866-635-2349. See SiriusXM Customer Agreement for complete terms at siriusxm.com. All fees and programming subject to change. ©2022 SiriusXM Radio, Inc. All rights reserved.



# WELL DONE



Sierra Limited SLE is about getting things done. Its spacious cabin with generous head and leg room provides plenty of space to work, and its large cargo beds—which range from 62.9 cu. ft. to 71.7 cu. ft.<sup>1</sup>—do likewise. And the World's First Six-Function GMC MultiPro Tailgate makes it easy

to load and access SLE's cargo bed. Driving all of this forward is a powerful engine lineup led by a standard 2.7L Turbo, followed by the optional 5.3L gas V8<sup>2</sup> or 3.0L Duramax Turbo Diesel, both paired with a 10-speed automatic transmission.

Due to current supply-chain shortages, certain features shown on this spread have limited or late availability, or are no longer available. See the window label or a dealer regarding the features on an individual vehicle.  
<sup>1</sup>Cargo and load capacity limited by weight and distribution. <sup>2</sup>5.3L V8 with 10-speed automatic transmission is available on 4WD models only. <sup>3</sup>Functionality varies by model. Full functionality requires compatible Bluetooth and smartphone, and USB connectivity for some devices. <sup>4</sup>If you decide to continue service after your trial, your selected subscription plan will automatically renew thereafter. You will be charged at then-current rates. Fees and taxes apply. To cancel, you must call SiriusXM at 1-866-635-2349. See SiriusXM Customer Agreement for complete terms at siriusxm.com. All fees and programming subject to change. ©2022 SiriusXM Radio, Inc. All rights reserved. <sup>5</sup>Not available with 2.7L Turbo engine or 2WD 5.3L V8 models.

- WORLD'S FIRST SIX-FUNCTION GMC MULTIPRO TAILGATE
- CHROME GRILLE, BUMPERS AND WINDOW SURROUND
- 12 CARGO TIE-DOWNS RATED AT 500 LBS<sup>1</sup> PER CORNER
- GMC INFOTAINMENT SYSTEM<sup>3</sup> WITH AVAILABLE CUSTOMIZABLE USER PROFILES
- SIRIUSXM<sup>4</sup>—INCLUDES 3-MONTH TRIAL SUBSCRIPTION
- 5.3L GAS V8<sup>2</sup> OR 3.0L DURAMAX TURBO DIESEL ENGINES ARE AVAILABLE
- 10-SPEED AUTOMATIC TRANSMISSION<sup>5</sup> IS AVAILABLE





## THE TAILGATE TO END ALL TAILGATES



We've revolutionized what tailgates can do with the World's First MultiPro Tailgate, combining six convenient functions never before possible in a truck. These functions help improve loading, unloading and accessing the cargo bed, and it's been rigorously tested to exacting GMC standards for structural strength and durability. In fact, the MultiPro is the most tested tailgate in GMC history, and it's standard on SLE, Elevation, SLT, AT4 and Denali and available on the Sierra Limited Pro trim.

When you're camping or tailgating and want to bring your music outdoors—without leaving your Sierra Limited running—the available accessory MultiPro Audio System by KICKER® is designed to integrate into the MultiPro Tailgate. This 100-watt exterior audio system has full Bluetooth® streaming capability. To shed more light on the gathering, add available dealer-installed accessory LED lighting.

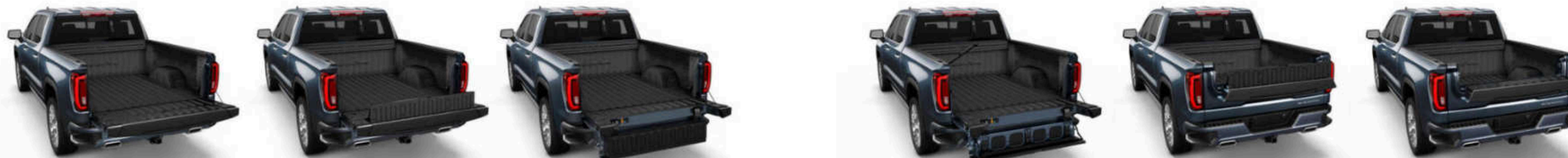
Due to current supply-chain shortages, certain features shown have limited or late availability, or are no longer available. See the window label or a dealer regarding the features on an individual vehicle.

# MULTIPRO TAILGATE

†Non-GM warranty. Limited warranty by KICKER®, 3 years/36,000 miles, whichever comes first. For more information, contact your dealer. ‡Go to [my.gmc.com/learnabout/bluetooth](http://my.gmc.com/learnabout/bluetooth) to find out which phones are compatible with the vehicle. Full Bluetooth feature functionality varies by device, model and software version.



## SIX FUNCTIONS THAT CHANGE EVERYTHING



The MultiPro Tailgate is an available feature on the Pro trim and standard on all other trims. Due to current supply-chain shortages, certain features shown have limited or late availability, or are no longer available. See the window label or a dealer regarding the features on an individual vehicle.

# 1

**PRIMARY GATE**  
Opens from the key fob, inside the truck or a button on the gate.

# 2

**PRIMARY GATE LOAD STOP**  
Helps prevent items from sliding out of the bed.

# 3

**EASY ACCESS**  
The inner gate folds down, allowing you to reach farther into the bed, and is easily disabled to prevent it from opening when a hitch or other equipment is installed.

# 4

**FULL-WIDTH STEP**  
The inner gate folds into a large step for easy access, holding up to 375 lbs.

# 5

**INNER GATE LOAD STOP**  
Helps prevent second-tier items from sliding out of the bed.

# 6

**INNER GATE WITH WORK SURFACE**  
When opened, provides a work surface as well as second-tier loading.

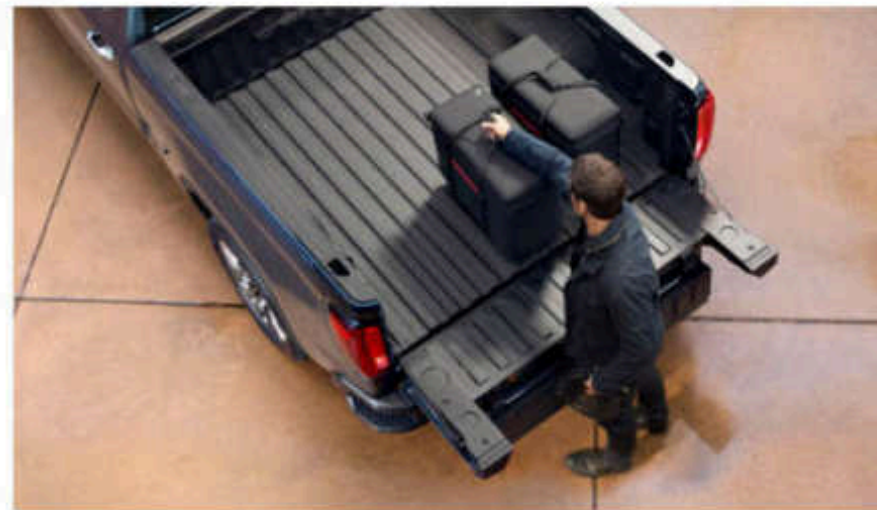
WATCH THE GMC MULTIPRO TAILGATE IN ACTION AT GMC.COM.



## IT'S WELL-APPOINTED BACK HERE, TOO

- ROLL-FORMED HIGH-STRENGTH STEEL BED FLOOR
- SPRAY-ON BEDLINER ON AT4 AND DENALI
- LARGE FOOTWELLS IN CORNERSTEP REAR BUMPER
- 12 TIE-DOWNS: THREE IN EACH CORNER RATED AT 500 LBS\* PER CORNER
- UP TO NINE MOVABLE ACCESSORY UPPER TIE-DOWNS ARE AVAILABLE
- 120-VOLT POWER OUTLET IS AVAILABLE
- LED CARGO AREA LAMPS ARE AVAILABLE

Sierra Limited's large cargo beds are engineered to work hard. They're constructed with roll-formed high-strength steel for a strong, durable cargo floor, and range in size from 62.9 cu. ft. to 89.1 cu. ft.<sup>2</sup> (Crew Cab models range from 62.9 cu. ft. to 71.7 cu. ft.<sup>2</sup>; Double Cab models provide 71.7 cu. ft.<sup>2</sup>; and Regular Cab models offer 89.1 cu. ft.<sup>2</sup>) Available spray-on bedliners offer protection, and accessory tonneau covers enclose the bed. LED cargo area lamps (standard on SLE, Elevation, SLT, AT4 and Denali) and a 120-volt power outlet (standard on SLT, AT4 and Denali) are available for the bed. For easy access to the bed, the CornerStep rear bumper features large footwells. And the six-function MultiPro Tailgate, standard on most trims, lets you simply step up into the bed thanks to a full-width step.



Top image and image at right: KICKER® accessory speakers shown. Non-GM warranty. Limited warranty by KICKER®: 3 years/36,000 miles, whichever comes first. For more information, contact your dealer.  
\*Cargo and load capacity limited by weight and distribution. †62.9 cu. ft. for the short bed, 71.7 cu. ft. for the standard bed and 89.1 cu. ft. for the long bed. Cargo and load capacity limited by weight and distribution.





# CARBONPRO

## BUILT FOR WHAT LIFE THROWS AT YOU



Due to current supply chain shortages, certain features shown have limited or late availability, or are no longer available. See the window label or a dealer regarding the features on an individual vehicle.

THE CARBONPRO BED IS INCLUDED IN THE SIERRA LIMITED CARBONPRO EDITION AND IS AVAILABLE ON AT4 AND DENALI.

- **STRENGTH, DURABILITY AND SCRATCH RESISTANCE:** CARBONPRO'S CARBON-FIBER COMPOSITE BED MATERIAL PROVIDES EXCELLENT SCRATCH, DENT AND CORROSION RESISTANCE
- **CORROSION RESISTANCE:** CARBON-FIBER COMPOSITE NATURALLY RESISTS CORROSION, HELPING THE BED WITHSTAND WEATHERING TO MAINTAIN A PREMIUM APPEARANCE
- **REDUCED WEIGHT:** CARBONPRO WEIGHS 25 PERCENT LESS THAN THE STEEL BED, ELIMINATING ROUGHLY 60 LBS OF VEHICLE MASS
- **MORE VOLUME:** CARBONPRO INCREASES THE ALREADY-GENEROUS CARGO VOLUME OF SIERRA'S STEEL BED BY 1 CU. FT.
- **MORE FUNCTIONALITY:** CARBONPRO FEATURES THREE MOLDED-IN SECTIONS FOR WHEELS AND TWO ADDITIONAL TIE-DOWNS (14 TOTAL) TO EASE THE LOADING AND SECURING OF DIRT BIKES AND ATVs





## PROGRADE TRAILERING PULLS IT ALL TOGETHER

### KNOWLEDGE IS POWERFUL

Sierra Limited is engineered for optimum trailering confidence. The available ProGrade Trailering System and the technologies below help provide a sense of control when hitching and towing.

### HEIGHTENED VIEWS

Easily keep tabs on your truck and trailer with up to 15 available camera views.<sup>1</sup> The available industry-first transparent trailer view helps you to virtually see right through a compatible trailer to detect objects behind it. The available accessory Rear Trailer Camera provides adaptive guidelines that move and show the predicted path of the trailer based on the steering wheel position when backing up. There's also an available Jack-Knife Alert and a Trailer Length Indicator for compatible trailers.

### IN-VEHICLE TRAILERING APP

The available in-vehicle Trailering App<sup>2</sup> is integrated into Sierra Limited's infotainment system<sup>3</sup> and includes trailering label information and the ability to create five defined trailer profiles based on trailer name, trailer type and trailer hitch type. There are also maintenance reminders, predeparture checklists, a Trailer Light Sequence Test, a Trailer Tire Pressure Monitoring System<sup>4</sup> and a counter for trailer mileage and fuel economy.

### myGMC MOBILE APP

The available myGMC mobile app<sup>5</sup> allows you to create and manage trailer profiles (shareable with other compatible Sierra Limited owners), run Trailer Light Sequence Tests to help ensure

trailer lights are in working order, reference predeparture checklists and use a Trailer Load Calculator to determine the combined weight of your truck and trailer. To monitor trailering health, you can view and receive alerts on key components of your trailer such as tire pressure monitoring<sup>4</sup> and trailer miles. There's also a glossary filled with trailering-related materials.

### SMART TRAILER INTEGRATION

The available ASA Electronics iN•Command<sup>®</sup> Control System<sup>6</sup> is designed to integrate with and be accessible through the myGMC mobile app<sup>5</sup> (on compatible iOS and Android smartphones) or on Sierra's infotainment system via Apple CarPlay<sup>®7</sup> and Android Auto<sup>™8</sup>. The iN•Command Control System allows you to monitor and control a range of smart system functions such as water tank levels, climate controls and power slide-outs in recreational trailers equipped with GlobalConnect technology.

### TRACTION SELECT SYSTEM WITH TOW/HAUL MODE

The available system allows you to quickly switch to Tow/Haul mode, which adjusts transmission shift points to deliver peak power and trailering performance. The system will retain the Tow/Haul setting configuration for up to 4 hours after Sierra Limited is turned off, eliminating the need to reengage the system after returning from a brief stop on a long journey.

### POWER TRAILERING MIRRORS

These available power-adjustable trailering mirrors power fold and manually extend and retract. Features vary by trim.

Due to current supply-chain shortages, certain features shown have limited or little availability or are no longer available. See the window label or a dealer regarding the features on an individual vehicle.

<sup>1</sup>Safety or driver assistance features are no substitute for the driver's responsibility to operate the vehicle in a safe manner. The driver should remain attentive to traffic, surroundings and road conditions at all times. Visibility, weather, and road conditions may affect feature performance. Read the vehicle's owner's manual for more important feature limitations and information. Some camera views require available accessory camera and installation. Not compatible with all trailers. See your dealer for details. <sup>2</sup>App functionality and features vary with vehicle equipment and trim level. Data connection may be required. Some features require active service plan and working electrical system. User terms and limitations apply. <sup>3</sup>Functionality varies by model. Full functionality requires compatible Bluetooth and smartphone, and USB connectivity for some devices. <sup>4</sup>Requires available Trailer Tire Pressure Monitoring System and installation of trailer tire pressure monitor sensors. <sup>5</sup>Available on select Apple<sup>®</sup> and Android<sup>™</sup> devices. Service availability, features and functionality vary by vehicle, device and the plan you are enrolled in. Terms apply. Device data connection required. See onstar.com for details and limitations. <sup>6</sup>iN•Command is provided by ASA Electronics and is designed to operate within 30 feet of the trailer. Works with trailers equipped with iN•Command Control System with GlobalConnect via Bluetooth connection. Control and monitoring functionality varies by trailer manufacturer model and installed options. Use of the iN•Command Control System feature through the myGMC mobile app requires an active service plan. User terms apply. See onstar.com for details and limitations. <sup>7</sup>Vehicle user interface is a product of Apple<sup>®</sup> and its terms and privacy statements apply. Requires compatible iPhone<sup>®</sup> and data plan rates apply. Apple CarPlay, Siri, iPhone and Apple Music are trademarks of Apple, Inc., registered in the U.S. and other countries. <sup>8</sup>Vehicle user interface is a product of Google and its terms and privacy statements apply. Requires the Android Auto app on Google Play and a compatible Android smartphone. Data plan rates apply. You can check which smartphones are compatible at g.co/androidauto/requirements. Google, Android, Android Auto, Google Maps and other marks are trademarks of Google LLC.

# CONFIDENCE IN SIGHT

## UP TO 15 AVAILABLE CAMERA VIEWS:<sup>1</sup>

- |   |   |    |   |
|---|---|----|---|
| 1 | TRANSPARENT TRAILER VIEW                            | 9  | BOWL VIEW   |
| 2 | HITCH VIEW  | 10 | FRONT SIDE VIEW   |
| 3 | CARGO BED VIEW (WITH ZOOM VIEW AND HITCH GUIDELINE) | 11 | REAR SIDE VIEW (WITH TRAILER BIASING)                           |
| 4 | FRONT CAMERA VIEW                                   | 12 | REAR TRAILER VIEW (WITH GUIDELINES AND TRAILER ANGLE INDICATOR) |
| 5 | REAR CAMERA VIEW                                    | 13 | INSIDE TRAILER VIEW   |
| 6 | SURROUND VIEW                                       | 14 | PICTURE-IN-PICTURE SIDE VIEW                                    |
| 7 | FRONT TOP-DOWN VIEW                                 | 15 | REAR CAMERA MIRROR  |
| 8 | REAR TOP-DOWN VIEW                                  |    |   |

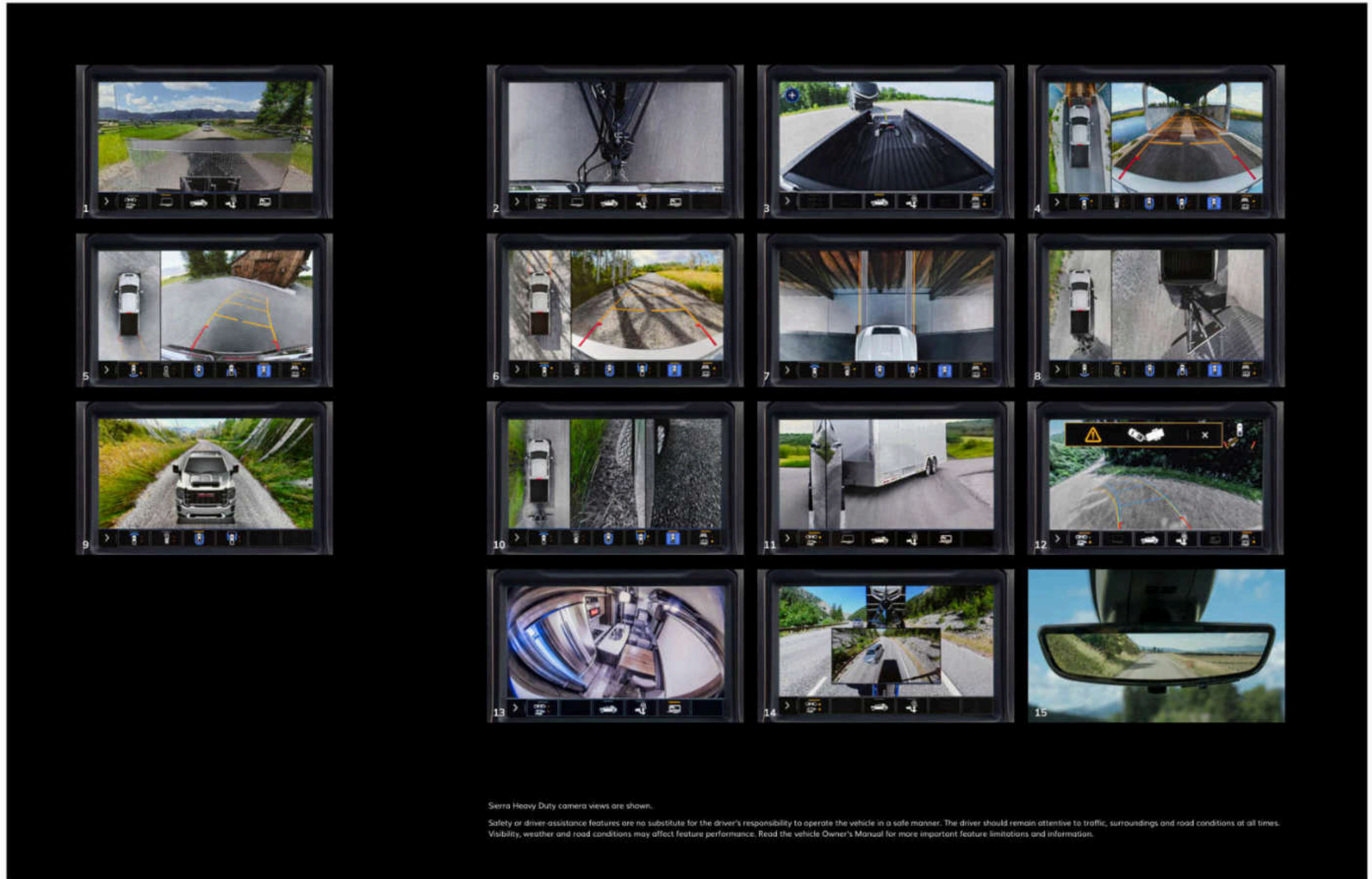
In Sierra Limited, your confidence is enhanced by up to 15 available camera views<sup>1</sup>—including the industry-first available transparent trailer view, which helps you virtually see right through a compatible trailer. The following are just a few of the enhancements designed to further help increase your trailering awareness.

**Jack-Knife Alert** is included with available High Definition Surround Vision and tracks the position of a compatible trailer in relation to the vehicle and if the front of the trailer approaches the rear of the vehicle, an alert is displayed that you're in a potential jack-knife situation. Based on vehicle equipment and user settings, the visual alert may be accompanied by audible or Safety Alert Seat notifications if equipped.

**Trailer Length Indicator** When enabled and driving forward with the turn signal activated, the available Trailer Length Indicator displays as a red overlay twice the length of a compatible trailer to show when other vehicles are present and may interfere with a lane-change maneuver.

Transparent trailer view, side view biasing, rear trailer guidelines with Trailer Angle Indicator, Trailer Length Indicator and Jack-Knife Alert features are not compatible with fifth-wheel or gooseneck trailers.

<sup>1</sup>Some camera views require available accessory camera and installation. Not compatible with all trailers. See your dealer for details.



Sierra Heavy Duty camera views are shown.

Safety or driver assistance features are no substitute for the driver's responsibility to operate the vehicle in a safe manner. The driver should remain attentive to traffic, surroundings and road conditions at all times. Visibility, weather and road conditions may affect feature performance. Read the vehicle Owner's Manual for more important feature limitations and information.



## 6.2L V8

420 HORSEPOWER | 460 LB-FT OF TORQUE | 10-SPEED AUTOMATIC TRANSMISSION  
 DYNAMIC FUEL MANAGEMENT | MAX TRAILERING: UP TO 13,000 LBS\* (8,900 LBS\* AS SHOWN)  
 MAX PAYLOAD: UP TO 1,890 LBS\* | 14 MPG CITY/19 MPG HIGHWAY\* (4WD)  
 13 MPG CITY/17 MPG HIGHWAY\* FOR AT4 WITH MUD-TERRAIN TIRES | AVAILABLE ON 4WD-EQUIPPED SLT, AT4 AND DENALI



\*13,000-lb rating requires properly equipped Crew Cab 4WD model with available 6.2L V8 engine, Max Trailering Package and 20" wheels and tires (8,900 lbs as shown requires a properly equipped Crew Cab short bed 4WD model with available 6.2L V8 engine). Maximum trailering ratings are intended for comparison purposes only. Before you buy a vehicle or use it for trailering, carefully review the trailering section of the Owner's Manual. The trailering capacity of your specific vehicle may vary. The weight of passengers, cargo and options or accessories may reduce the amount you can trailer. \*Requires properly equipped Crew Cab short bed 4WD model with available 6.2L V8 engine and Max Trailering Package. These maximum payload ratings are intended for comparison purposes only. Before you buy a vehicle or use it to haul people or cargo, carefully review the vehicle loading section of the Owner's Manual and check the carrying capacity of your specific vehicle on the label on the inside of the driver's doorjamb. EPA estimated. \*9,300-lb rating requires properly equipped Double Cab 2WD model with available 3.0L Duramax Turbo Diesel engine (8,800 lbs as shown requires a properly equipped Crew Cab 4WD model with 3.0L Duramax Turbo Diesel engine). Maximum trailering ratings are intended for comparison purposes only. Before you buy a vehicle or use it for trailering, carefully review the trailering section of the Owner's Manual. The trailering capacity of your specific vehicle may vary. The weight of passengers, cargo and options or accessories may reduce the amount you can trailer. \*Requires properly equipped Crew Cab short bed 2WD model with available 3.0L Duramax Turbo Diesel engine. These maximum payload ratings are intended for comparison purposes only. Before you buy a vehicle or use it to haul people or cargo, carefully review the vehicle loading section of the Owner's Manual and check the carrying capacity of your specific vehicle on the label on the inside of the driver's doorjamb. \*Based on EPA-estimated highway mpg and fuel tank capacity. Your range may be less.

## 3.0L DURAMAX TURBO DIESEL

MAX TRAILERING: UP TO 9,300 LBS\* (8,800 LBS\* AS SHOWN) | MAX PAYLOAD: UP TO 1,830 LBS\*  
 23 MPG CITY/30 MPG HIGHWAY\* (2WD) | 22 MPG CITY/26 MPG HIGHWAY\* (4WD)  
 20 MPG CITY/23 MPG HIGHWAY\* FOR AT4 WITH MUD-TERRAIN TIRES  
 AVAILABLE MAXIMUM HIGHWAY RANGE: UP TO 660 MILES\* (2WD), UP TO 624 MILES\* (4WD) AND UP TO 552 MILES\* (AT4 WITH MUD-TERRAIN TIRES)  
 10-SPEED AUTOMATIC TRANSMISSION | ACTIVE THERMAL MANAGEMENT | 277 HORSEPOWER | 460 LB-FT OF TORQUE  
 STANDARD ON AT4 | AVAILABLE ON SLE, ELEVATION, SLT AND DENALI



Due to current supply chain shortages, certain features shown on this spread have limited or late availability, or are no longer available. See the window label or a dealer regarding the features on an individual vehicle.



## 5.3L V8

355 HORSEPOWER | 383 LB-FT OF TORQUE | 8-SPEED AUTOMATIC TRANSMISSION  
 10-SPEED AUTOMATIC TRANSMISSION (SELECT 4WD) | DYNAMIC FUEL MANAGEMENT  
 MAX TRAILERING: UP TO 11,200 LBS\* (9,200 LBS\* AS SHOWN) | MAX PAYLOAD: UP TO 2,180 LBS\*  
 16-MPG CITY/21 MPG HIGHWAY\* (2WD) | 15-MPG CITY/20 MPG HIGHWAY\* (4WD WITH 8-SPEED TRANSMISSION)  
 15-MPG CITY/19 MPG HIGHWAY\* (4WD WITH 10-SPEED TRANSMISSION) | 14-MPG CITY/18 MPG HIGHWAY\* (4WD WITH MUD-TERRAIN TIRES)  
 STANDARD ON SLT AND DENALI | AVAILABLE ON PRO, SLE AND ELEVATION



\*11,200-lb rating requires properly equipped Double Cab or Crew Cab short bed 2WD model with available 5.3L V8 engine and Max Trailering Package (9,200 lbs as shown requires a properly equipped Double Cab 4WD model with available 5.3L V8 engine and Trailering Package). Maximum trailering ratings are intended for comparison purposes only. Before you buy a vehicle or use it for trailering, carefully review the trailering section of the Owner's Manual. The trailering capacity of your specific vehicle may vary. The weight of passengers, cargo and options or accessories may reduce the amount you can trailer. <sup>†</sup>Requires properly equipped Regular Cab 2WD model. These maximum payload ratings are intended for comparison purposes only. Before you buy a vehicle or use it to haul people or cargo, carefully review the vehicle loading section of the Owner's Manual and check the carrying capacity of your specific vehicle on the label on the inside of the driver's doorjamb. <sup>††</sup>EPA estimated. <sup>†††</sup>9,400-lb rating requires properly equipped Regular Cab 2WD model with available 2.7L Turbo engine and Trailering Package (8,900 lbs as shown requires a properly equipped Double Cab 4WD model with 2.7L Turbo engine and available Trailering Package). Maximum trailering ratings are intended for comparison purposes only. Before you buy a vehicle or use it for trailering, carefully review the trailering section of the Owner's Manual. The trailering capacity of your specific vehicle may vary. The weight of passengers, cargo and options or accessories may reduce the amount you can trailer. <sup>††††</sup>Requires properly equipped 2WD Regular Cab long bed model. These maximum payload ratings are intended for comparison purposes only. Before you buy a vehicle or use it to haul people or cargo, carefully review the vehicle loading section of the Owner's Manual and check the carrying capacity of your specific vehicle on the label on the inside of the driver's doorjamb.

## 2.7L TURBO

310 HORSEPOWER | 348 LB-FT OF TORQUE | 8-SPEED AUTOMATIC TRANSMISSION | ACTIVE FUEL MANAGEMENT  
 MAX TRAILERING: UP TO 9,400 LBS\* (8,900 LBS\* AS SHOWN) | MAX PAYLOAD: UP TO 2,280 LBS\*  
 19-MPG CITY/22 MPG HIGHWAY\* (2WD) | 17-MPG CITY/20 MPG HIGHWAY\* (4WD) | 16-MPG CITY/18 MPG HIGHWAY\* (4WD WITH MUD-TERRAIN TIRES)  
 STANDARD ON PRO, SLE AND ELEVATION



Due to current supply-chain shortages, certain features shown have limited or late availability, or are no longer available. See the window label or a dealer regarding the features on an individual vehicle.



## WHERE HANDLING GETS PERSONAL



On road or off, Sierra Limited is engineered to help inspire driving confidence. The available Traction Select System allows you to tailor your driving experience to multiple road conditions. Denali models add premium ride and handling with continuous damping Adaptive Ride Control.

**TRACTION SELECT SYSTEM** This available technology allows you to choose different drive modes, based on equipment, that alter the transmission shift points, throttle and traction systems to better handle varying road conditions. The modes include Normal for everyday driving; Sport, to increase responsiveness; Tow/Haul for trailering or hauling heavy loads; Snow mode on 2WD models is helpful in slippery conditions; Terrain mode is included on 4WD models with the single-speed transfer case and optimizes low-speed driving over rough terrain; and available Off-Road mode helps Sierra take on rugged terrain at moderate speeds.

**RESPONSIVE SUSPENSION** The independent short-/long-arm front suspension provides excellent wheel alignment and ride comfort with reduced weight. The live-axle rear suspension includes two-stage, semielliptic multileaf rear springs to balance payload management and ride quality.

**ADAPTIVE CRUISE CONTROL<sup>1</sup>** This available feature can automatically maintain a driver-selected gap time from the detected vehicle you're following while you steer. This reduces the need for you to frequently brake and accelerate when you're driving.

**ADAPTIVE RIDE CONTROL** The premium suspension system on Denali models also includes Adaptive Ride Control, which monitors input from both the road and the truck in real time to help deliver a smooth ride. Every 2 milliseconds, active dampers continuously adjust both rebound and compression forces to counter heave, pitch and body roll. Stiffness rates also change when Sport mode is selected, or automatically when the system senses heavy trailering or large payloads.



Due to current supply-chain shortages, certain features shown on this spread have limited or late availability, or are no longer available. See the window label or a dealer regarding the features on an individual vehicle.

<sup>1</sup>Safety or driver-assistance features are no substitute for the driver's responsibility to operate the vehicle in a safe manner. The driver should remain attentive to traffic, surroundings and road conditions at all times. Visibility, weather and road conditions may affect feature performance. Read the vehicle Owner's Manual for more important feature limitations and information.



## EVEN THE FRAME IS A WORK OF ART



**PURPOSE-BUILT FOUNDATION** Constructed on a fully boxed steel frame, Sierra Limited is engineered with bold proportions that provide a strong foundation. From its range of available transfer cases to its "e-boost" braking system, Sierra Limited is built like there's a lot riding on it—because there is.

**FULLY BOXED LADDER FRAME** As much as 80 percent of the frame is made of high-strength steel—varying from 2 mm to 5 mm in thickness, with every millimeter optimized for performance, strength and stiffness.

**STOPPING POWER** The electrohydraulic boost, or "e-boost," system produces power on demand for smooth, reliable, consistent braking whether the truck is loaded, unloaded or hauling a heavy trailer. In addition, all Sierra Limited models are equipped with brake pad monitoring.

**MULTIPLE MATERIALS** Engineering excellence means the right material in the right place. There's high-strength steel in the frame, bed and safety cage. Lightweight aluminum in the doors, hood and tailgate creates easier closing, and its lighter weight enables better efficiency. GMC engineers selected the perfect material for the application, then optimized it for durability, safety, mass and function.

**TRANSFER OF POWER** On 4WD models, Sierra Limited offers a choice of transfer cases. The 2-speed transfer case features Auto, 2 High, 4 High and 4 Low settings. It is standard on AT4 and Denali 4WD models and is included with the available X31 Off-Road Package. The single-speed transfer case, standard on all other 4WD models, offers Auto, 2 High, 4 High and Terrain mode designed to optimize low-speed off-road driving.



## WELL AWARE



- SIERRA LIMITED OFFERS:
- MULTICOLOR 15" DIAGONAL HEAD-UP DISPLAY
  - REAR CAMERA MIRROR
  - HIGH DEFINITION SURROUND VISION
  - ADAPTIVE CRUISE CONTROL
  - SAFETY ALERT SEAT
  - FRONT PEDESTRIAN BRAKING
  - LANE CHANGE ALERT WITH SIDE BLIND ZONE ALERT
  - REAR CROSS TRAFFIC ALERT
  - LANE KEEP ASSIST WITH LANE DEPARTURE WARNING
  - AUTOMATIC EMERGENCY BRAKING
  - INTELLIBEAM—AUTO HIGH BEAMS
  - TRAILERING-ASSISTANCE TECHNOLOGIES: JACK-KNIFE ALERT AND SHOWN BELOW LEFT, TRAILER LENGTH INDICATOR FOR COMPATIBLE TRAILERS

Due to current supply-chain shortages, certain features shown have limited or late availability, or are no longer available. See the window label or a dealer regarding the features on an individual vehicle.

To help you be more aware, Sierra Limited offers safety and driver-assistance technologies engineered to provide a real-time view of the truck and its surroundings. Easily keep tabs on your truck and trailer with up to 15 different camera views<sup>1</sup> available with the Technology Package to help you see around the truck and compatible trailers (if towing). Additional features such as available Jack-Knife Alert and available Trailer Length Indicator also help keep you alert to possible dangers, improving your trailering experience.

Safety or driver-assistance features are no substitute for the driver's responsibility to operate the vehicle in a safe manner. The driver should remain attentive to traffic, surroundings and road conditions at all times. Visibility, weather and road conditions may affect feature performance. Read the vehicle Owner's Manual for more important feature limitations and information.

<sup>1</sup>Some camera views require available accessory camera and installation. Not compatible with all trailers. See your dealer for details.



IN TOUCH. IN COMMAND.



SIERRA LIMITED OFFERS:

- ▶ GMC CONNECTED SERVICES\*
- ▶ ONSTAR® SAFETY AND SECURITY†
- ▶ myGMC MOBILE APP‡
- ▶ AMAZON ALEXA BUILT-IN‡
- ▶ WI-FI® HOTSPOT‡
- ▶ WIRELESS APPLE CARPLAY® COMPATIBILITY
- ▶ WIRELESS ANDROID AUTO™ COMPATIBILITY
- ▶ IN-VEHICLE APPS‡ SUCH AS SPOTIFY‡

Due to current supply chain shortages, certain features shown have limited or late availability, or are no longer available. See the window label or a dealer regarding the features on an individual vehicle.

\*Connected services vary by vehicle model and require active service plan, working electrical system, cell reception and GPS signal. Does not include emergency or security services. See onstar.com for details and limitations. †OnStar plan, working electrical system, cell reception and GPS signal required. OnStar links to emergency services. See onstar.com for details and limitations. ‡Available on select Apple® and Android devices. Service availability, features and functionality vary by vehicle, device and the plan you are enrolled in. Terms apply. Device data connection required. See onstar.com for details and limitations. §Functionality is subject to limitations and varies by vehicle, infotainment system and location. Select service plan required. Certain Alexa Skills require account linking to use. Amazon, Alexa, Amazon Music and all related marks are trademarks of Amazon.com, Inc. or its affiliates. See onstar.com for additional details. ¶Service varies with conditions and location. Requires active service plan and paid AT&T data plan. See onstar.com for details and limitations. \*\*Vehicle user interface is a product of Apple® and its terms and privacy statements apply. Requires compatible iPhone® and data plan rates apply. Apple CarPlay, Siri, iPhone and Apple Music are trademarks of Apple, Inc., registered in the U.S. and other countries.



GMC Acadia shown.



**MORE CONFIDENCE, MORE CONNECTIVITY, MORE CHOICE**

Prepare for the unexpected and enjoy the seamless experience of a completely connected drive. GMC Connected Services offers you an elevated ownership experience. And with available OnStar, you get added peace of mind knowing an Emergency-Certified Advisor<sup>†</sup> is ready to help 24/7.

**24/7 LIFELINE** When the unexpected happens, the last thing you want to be is alone. With OnStar, you can have added peace of mind knowing help is only a button-push away. The available OnStar Safety & Security Plan<sup>†</sup> provides 24/7 access to a specially trained OnStar Advisor who can help in the event of a crash, vehicle theft,<sup>‡</sup> emergency or other unexpected situation you may encounter on the road. If a vehicle crash is detected, available Automatic Crash Response<sup>‡</sup> can alert an Emergency-Certified Advisor<sup>†</sup> who can send help, even if you can't ask for it. Drive with added confidence knowing a real person is always ready to help.

**myGMC MOBILE APP** Convenience, command and control, in or out of your vehicle. With the available myGMC mobile app,<sup>‡</sup> you can start your engine, check fuel levels and tire pressure and even personalize your vehicle by setting radio station

favorites and installing in-vehicle apps<sup>‡</sup>—all from your smartphone. You can also schedule service appointments, learn driving tips and more.

**EXPLORE MORE, ALEXA'S ON BOARD** The Alexa functionality you enjoy at home is now fully integrated into your GMC Infotainment System.<sup>‡</sup> With available Alexa Built-In,<sup>‡</sup> you can use voice commands to stream your favorite music services such as Spotify<sup>§</sup> or Amazon Music, get directions, make calls, change your radio station and get routes to the nearest dealership—on the go. Alexa can also make shopping lists, play and resume audiobooks and get the score to last night's game.

**WIRELESS, SEAMLESS, EFFORTLESS** Convenient cordless control is yours with available wireless Apple CarPlay<sup>®</sup> compatibility.<sup>¶</sup> Without plugging in a single wire, Apple CarPlay<sup>®</sup> connects your iPhone<sup>®</sup> to Sierra Limited's infotainment screen, allowing access to Apple Music<sup>™</sup>, Apple Maps, Siri<sup>™</sup> and other functions. The same goes for available wireless Android Auto compatibility,<sup>\*\*</sup> which connects you to Google Maps, YouTube Music, Google Assistant and plenty more resources through your Android phone.

Vehicle user interface is a product of Google and its terms and privacy statements apply. Requires the Android Auto app on Google Play and a compatible Android smartphone. Data plan rates apply. You can check which smartphones are compatible at g.co/androidauto/requirements. Google, Android, Android Auto, Google Maps and other marks are trademarks of Google LLC. †Available on select 2017 model year and newer GM vehicles with compatible hardware. Third-party trademarks are the property of their respective third-party owners and used under agreement. Requires active service plan and paid AT&T vehicle data plan. See onstar.com for details and limitations. ‡Spotify app requires active Spotify account. Visit spotify.com/usa on your smartphone, tablet or computer for terms and to set up an account. Available on select model year 2018 and newer infotainment systems with compatible hardware. Select service plan required. ††OnStar Emergency Advisors are certified by the International Academies of Emergency Dispatch. †††Requires armed GM factory-installed theft-deterrent system and enrollment to receive alerts. Additional texting and data rates apply. Doesn't prevent theft, damage or loss. ††††Not all vehicles may transmit all crash data. †††††Functionality varies by model. Full functionality requires compatible Bluetooth and smartphone, and USB connectivity for some devices.



## YOUR SIERRA LIMITED AWAITS

KEY FEATURES	PRO	SLE	ELEVATION	SLT	AT4	DENALI
<b>CAPABILITY</b>						
2.7L Turbo Engine	●	●	●	—	—	—
3.6L Gas V6 Engine	○	○	○	●	—	●
4.2L Gas V8 Engine (4WD models)	—	—	—	○	○	○
3.0L Duramax Turbo Diesel I6 Engine	—	○	○	○	●	○
10-Speed Automatic Transmission	—	○	○	○	●	○
Bridgestone® Ranger DualTrac™ Tires	○	—	—	—	●	—
Premium Suspension With Adaptive Ride Control	—	—	—	—	—	●
Traction Select System With Tow/Haul Mode	—	●	●	●	●	●
Danaher Brake Rotors	●	●	●	●	●	●
Single-Speed Auto-Trac Transfer Case With Terrain Mode (4WD models)	●	●	●	●	—	—
2-Speed Auto-Trac Transfer Case (4WD models)	○	○	○	○	●	●
<b>INTERIOR</b>						
40/20/40 Front Bench Seat	●	●	●	●	—	—
Heated and Ventilated Front Bucket Seats <sup>1</sup>	—	—	—	○	●	●
Heated Steering Wheel <sup>2</sup>	—	●	●	●	●	●
Second-Row Seatback Storage	—	○	●	●	●	●
Second-Row Air Vents (Double Cab and Crew Cab)	●	●	●	●	●	●
Bose® Premium Audio System With RichBass Woofer	—	—	○	○	○	●

● Standard ○ Available — Not Available

### KEY PACKAGES

See your GMC dealer or [gmc.com](http://gmc.com) for more package details and requirements.

#### SLT

**SLT CONVENIENCE PACKAGE** includes bucket seats with center console, ventilated front seats,<sup>1</sup> rear sliding power window, Universal Home Remote and 2 USB ports<sup>3</sup> with auxiliary input (2 additional USB ports,<sup>4</sup> auxiliary input and SD card located inside console when bucket seats are ordered).

**SLT PREFERRED PACKAGE** includes 8" diagonal Premium GMC Infotainment System<sup>5</sup> with Navigation,<sup>6</sup> Bose Premium Audio System with RichBass woofer and wireless charging.<sup>7</sup>

**SLT PREMIUM PACKAGE** includes SLT Convenience Package, 20" polished aluminum wheels and chrome assist steps.

**SLT PREMIUM PLUS PACKAGE** includes SLT Convenience Package, SLT Preferred Package, Driver Alert Package I, Driver Alert Package II, 20" polished aluminum wheels, chrome assist steps and spray-on bedliner.

KEY FEATURES	PRO	SLE	ELEVATION	SLT	AT4	DENALI
<b>EXTERIOR</b>						
CarbonPro™ Carbon-Fiber Composite Bed	—	—	—	—	○	○
World's First Six-Function GMC MultiPro™ Tailgate	○	●	●	●	●	●
Accessory MultiPro Audio System by KICKER™	—	○	○	○	○	○
Spray-on Bedliner	○	○	○	○	●	●
Dual Exhaust With Premium Tips	—	○	○	○	●	●
CrossStep Rear Bumper	●	●	●	●	●	●
LED Fog Lamps	—	—	●	●	●	●
<b>TECHNOLOGY &amp; SAFETY</b>						
Multiview™ 10" Diagonal Head-Up Display	—	—	—	○	○	○
Rear Camera Mirror <sup>8</sup>	—	—	—	○	○	○
High Definition Surround Vision <sup>9</sup> With 2 Trailer View Camera Provisions	—	—	—	○	○	○
Bed View Camera <sup>9</sup>	—	—	—	○	○	○
In-Vehicle Trailing App <sup>10</sup>	—	○	○	●	●	●
Adaptive Cruise Control	—	○	○	○	○	○
Lane Change Alert With Side Blind Zone Alert <sup>11</sup>	○	○	○	○	○	○
Forward Collision Alert <sup>12</sup>	○	○	○	○	○	○
Safety Alert Seat <sup>13</sup>	—	—	—	○	○	○
Wireless Apple CarPlay™ Compatibility	—	○	○	●	●	●
Wireless Android Auto™ Compatibility	—	○	○	●	●	●
Wireless Charging <sup>14</sup>	—	—	—	○	○	○
SiriusXM <sup>15</sup> With 3-Month Trial Subscription (Includes 300 <sup>16</sup> on SLT, AT4 and Denali)	○	●	●	●	●	●

#### AT4

**AT4 PREFERRED PACKAGE** includes Universal Home Remote, rear sliding power window, 6" diagonal Premium GMC Infotainment System<sup>5</sup> with Navigation,<sup>6</sup> Bose Premium Audio System with RichBass woofer and wireless charging.<sup>7</sup>

**AT4 PREMIUM PACKAGE** includes AT4 Preferred Package, Driver Alert Package I and AT4 high-clearance steps.

### KEY PACKAGES CONTINUED

See your GMC dealer or [gmc.com](http://gmc.com) for more package details and requirements.

#### AT4 CONTINUED

**AT4 CARBONPRO EDITION** includes unique grille surround with black chrome finish, AT4 CarbonPro hard badge, CarbonPro carbon-fiber composite bed, MultiPro Audio System by KICKER<sup>17</sup> and gloss-black dual exhaust tips. Wheels may be upgraded to 20" 6-spoke Carbon Grey painted aluminum wheels. (Requires 4WD short bed model, 6.2L V8 engine or 3.0L Duramax Turbo Diesel I6 engine and AT4 Premium Package. Requires one of the following exterior colors: Dusk Black, Summit White, Satin Steel Metallic (limited availability) or Ebony Twilight Metallic.)

#### DENALI

**DENALI CARBONPRO EDITION** includes MultiPro Audio System by KICKER<sup>17</sup> and CarbonPro carbon-fiber composite bed. Wheels may be upgraded to 22" high-gloss black wheels or 22" Bright Chrome wheels. (Requires 4WD short bed model, 6.2L V8 engine or 3.0L Duramax Turbo Diesel I6 engine and Denali Reserve Package or Denali Premium Package.)

**DENALI PREMIUM PACKAGE** includes sunroof, 20" multidimensional polished aluminum wheels and GMC MultiPro Power Steps.

**DENALI RESERVE PACKAGE** includes Technology Package, Driver Alert Package II, sunroof, GMC MultiPro Power Steps and 20" multidimensional polished aluminum wheels. (4WD models require 6.2L V8 engine or 3.0L Duramax Turbo Diesel I6 engine. 2WD models require 3.0L Duramax Turbo Diesel I6 engine.)

#### ADDITIONAL PACKAGES

**DRIVER ALERT PACKAGE I<sup>18</sup>** includes Front and Rear Park Assist (feature will not function on certain models without dealer retrofit; see dealer for details), Lane Change Alert with Side Blind Zone Alert and Rear Cross Traffic Alert. (Available on SLE, Elevation, SLT and AT4. Standard on Denali.)

**DRIVER ALERT PACKAGE II<sup>19</sup>** includes Forward Collision Alert, Lane Keep Assist with Lane Departure Warning, Automatic Emergency Braking, Front Pedestrian Braking, IntelliBeam—auto high beams, Adaptive Cruise Control and Following Distance Indicator. (Available on SLE, SLT, AT4 and Denali.)

**PREFERRED PACKAGE** includes Universal Home Remote, rear sliding power window, Crew Cab rear seatback storage (SLE only), 120-volt power outlet, 120-volt bed-mounted power outlet, 6" diagonal Premium GMC Infotainment System,<sup>5</sup> SiriusXM with 300<sup>16</sup> (includes 3-month trial), High Definition Rear Vision Camera,<sup>2</sup> 2 USB ports<sup>3</sup> (located on instrument panel with front 40/20/40 bench seat on SLE and inside console with bucket seats on Elevation) and Bose Premium Audio System with RichBass woofer (Elevation only). (Available on SLE and Elevation.)

**TECHNOLOGY PACKAGE<sup>9</sup>** includes High Definition Surround Vision, Rear Camera Mirror, Bed View Camera and multiview 10" diagonal Head-Up Display. (Available on SLT, AT4 and Denali.)

**X31 OFF-ROAD PACKAGE** includes off-road suspension, Hill Descent Control, skid plates, heavy-duty air filter, automatic locking rear differential, 2-speed transfer case and X31 hard badge. (Requires Crew Cab or Double Cab 4WD model. Available on Pro, SLE, Elevation and SLT.)

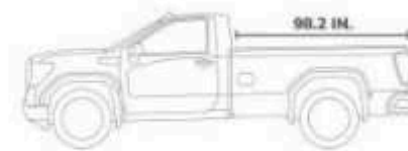
**X31 OFF-ROAD AND PROTECTION PACKAGE** includes X31 Off-Road Package, spray-on bedliner and all-weather floor liners. (Requires Crew Cab or Double Cab 4WD model. Available on SLE, Elevation and SLT.)

**SNOW PLOW PREP PACKAGE** includes roof emergency light provisions, 220-amp alternator, heavy-duty air filter, skid plates and heavy-duty front springs. (Requires 4WD model. Available on Pro, SLE and SLT.)

**TRAILERING PACKAGE** includes trailer hitch, 7-pin and 4-pin connectors and Hitch Guidance.<sup>20</sup> (Available on Pro, Standard on SLE, Elevation, SLT, AT4 and Denali.)

**MAX TRAILERING PACKAGE** includes 3.75" rear axle, 3.42 axle ratio, enhanced cooling radiator, revised shock tuning for increased control, heavier-duty rear springs, increased Rear Gross Axle Weight Rating and 220-amp alternator. (Available on SLE, Elevation and SLT.)

### SIERRA 1500 LIMITED CAB AND BED CONFIGURATIONS



**REGULAR CAB LONG BED**  
Standard on Pro.



**DOUBLE CAB STANDARD BED**  
Available on Pro, SLE and Elevation.



**CREW CAB SHORT BED**  
Available on Pro, SLE, Elevation, SLT, AT4 and Denali.



**CREW CAB STANDARD BED**  
Available on Pro, SLE, Elevation, SLT, AT4 and Denali.

<sup>1</sup>Feature will not function on certain models without dealer retrofit. See dealer for details. <sup>2</sup>Non-EM warranty. Limited warranty by KICKER<sup>17</sup>, 3 years/36,000 miles, whichever comes first. For more information, contact your dealer. <sup>3</sup>Safety or driver-assistance features are no substitute for the driver's responsibility to operate the vehicle in a safe manner. Read the vehicle Owner's Manual for important feature limitations and information. <sup>4</sup>App functionality and features vary with vehicle equipment and firm level. Data connection may be required. Some features require active service plan and working electrical system. User terms and limitations apply. <sup>5</sup>Vehicle user interface is a product of Apple<sup>®</sup> and its terms and privacy statements apply. Requires compatible iPhone<sup>®</sup> and data plan rates apply. Apple CarPlay, Siri, iPhone and Apple Maps are trademarks of Apple, Inc., registered in the U.S. and other countries. <sup>6</sup>Vehicle user interface is a product of Google and its terms and privacy statements apply. Requires the Android Auto app on Google Play and a compatible Android smartphone. Data plan rates apply. You can check which smartphones are compatible at [gmc.com/androidauto/requirements](http://gmc.com/androidauto/requirements). Google, Android, Android Auto, Google Maps and other marks are trademarks of Google LLC. <sup>7</sup>The system wirelessly charges one compatible mobile device. Some phones have built-in wireless charging technology and others require a special adapter/cable cover. To check for phone or other device compatibility, see [mygmc.com/learn](http://mygmc.com/learn) or consult your carrier. <sup>8</sup>If you decide to continue service after your trial, your selected subscription plan will automatically renew thereafter. You will be charged at then current rates. Fees and taxes apply. To cancel, you must call SiriusXM at 1-888-635-2343. See SiriusXM Customer Agreement for complete terms at [siriusxm.com](http://siriusxm.com). All fees and programming subject to change. ©2022 SiriusXM Radio, Inc. All rights reserved. <sup>9</sup>Certain features require a SiriusXM subscription and the GMC Connected Access plan. See [siriusxm.com](http://siriusxm.com) and [gmc.com](http://gmc.com) for details and limitations. <sup>10</sup>Not compatible with all devices. <sup>11</sup>Functionality varies by model. Full functionality requires compatible Bluetooth<sup>®</sup> and smartphone, and USB connectivity for some devices. <sup>12</sup>Map coverage available in the United States, Puerto Rico and Canada.

## SIERRA 1500 LIMITED BY THE NUMBERS

### TRAILERING CAPABILITY AND SPECIFICATIONS

ENGINE	CAB	BED	MAX GVWR (LBS) <sup>1</sup>	MAX GCWR (LBS) <sup>2</sup>	AXLE RATIO	MAX CONVENTIONAL HITCH (LBS) <sup>3</sup>	MAX FIFTH-WHEEL HITCH (LBS) <sup>4</sup>	MAX GOOSENECK HITCH (LBS) <sup>5</sup>	MAX PAYLOAD (LBS) <sup>6</sup>
2.7L TURBO	Crew 2WD	Short	6,800	14,500	3.42	8,000	8,700	9,700	2,060
		Standard	6,800	14,500	3.42	8,000	8,700	9,700	2,060
	Crew 4WD	Short	7,000	14,500	3.42	8,800	9,200	9,200	2,040
		Standard	7,000	14,500	3.42	8,800	9,200	9,200	2,040
	Double 2WD	Short	7,000	14,500	3.42	8,800	9,200	9,200	2,040
		Standard	7,000	14,500	3.42	8,800	9,200	9,200	2,040
	Double 4WD	Short	7,000	14,500	3.42	8,800	9,200	9,200	2,040
		Standard	7,000	14,500	3.42	8,800	9,200	9,200	2,040
Regular 4WD	Long	6,900	14,500	3.42	8,400	9,300	9,300	2,280	
	Standard	6,900	14,500	3.42	8,400	9,300	9,300	2,280	
5.3L V8	Crew 2WD	Short	7,180*	16,800*	3.23	9,600	9,600	9,600	2,140*
		Standard	7,180*	16,800*	3.42	11,200*	9,700*	9,700*	2,140*
	Crew 4WD	Short	7,300*	16,800*	3.23	9,400	9,700	9,700	2,030
		Standard	7,300*	16,800*	3.42	10,800*	9,700*	9,700*	2,030
	Double 2WD	Short	7,300*	16,800*	3.23	9,400	9,700	9,700	2,030
		Standard	7,300*	16,800*	3.42	10,800*	9,700*	9,700*	2,030
	Double 4WD	Short	7,100*	16,800*	3.23	8,700	9,600	9,600	2,150*
		Standard	7,100*	16,800*	3.42	11,200*	9,900*	9,900*	2,150*
	Regular 2WD	Long	6,900	15,000	3.42	9,900	9,900	9,900	2,300
		Standard	6,900	15,000	3.42	9,900	9,900	9,900	2,300

### TRAILERING CAPABILITY AND SPECIFICATIONS CONTINUED

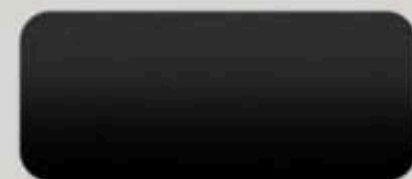
ENGINE	CAB	BED	MAX GVWR (LBS) <sup>1</sup>	MAX GCWR (LBS) <sup>2</sup>	AXLE RATIO	MAX CONVENTIONAL HITCH (LBS) <sup>3</sup>	MAX FIFTH-WHEEL HITCH (LBS) <sup>4</sup>	MAX GOOSENECK HITCH (LBS) <sup>5</sup>	MAX PAYLOAD (LBS) <sup>6</sup>
6.2L V8	Crew 4WD	Short	7,300*	15,100*	3.23	8,900*	6,500*	6,500*	1,880*
		Standard	7,300*	15,100*	3.42	11,000*	7,300*	7,300*	1,880*
	Crew 2WD	Short	7,300*	15,100*	3.23	8,900*	6,300*	6,300*	1,860*
		Standard	7,300*	15,100*	3.42	11,000*	7,600*	7,600*	1,860*
3.0L DURAMAX TURBO DIESEL I6	Crew 2WD	Short	7,000	15,000	3.23	8,100	7,300	7,300	1,830
		Standard	7,000	15,000	3.23	8,100	7,300	7,300	1,830
	Crew 4WD	Short	7,200	15,000	3.23	8,900	6,700*	6,700*	1,810
		Standard	7,200	15,000	3.23	8,900	6,700*	6,700*	1,810
	Double 2WD	Short	6,900	15,000	3.23	8,300	7,300	7,300	1,700
		Standard	6,900	15,000	3.23	8,300	7,300	7,300	1,700
Double 4WD	Standard	7,100	15,000	3.23	9,000	8,200	8,200	1,750	

<sup>1</sup>Maximum Gross Vehicle Weight Rating (GVWR). When properly equipped, includes weight of vehicle, passengers, cargo and equipment. <sup>2</sup>Gross Combination Weight Rating (GCWR). When properly equipped, includes weight of vehicle and trailer combination, including the weight of driver, passengers, fuel, optional equipment and cargo in the vehicle and trailer. <sup>3</sup>Maximum trailer ratings are intended for comparison purposes only. Before you buy a vehicle or use it for trailering, carefully review the trailering section of the Owner's Manual. The trailering capacity of your specific vehicle may vary. The weight of passengers, cargo and options or accessories may reduce the amount you can trailer. <sup>4</sup>These maximum payload ratings are intended for comparison purposes only. Before you buy a vehicle or use it to haul people or cargo, carefully review the vehicle loading section of the Owner's Manual and check the carrying capacity of your specific vehicle on the label on the inside of the driver's doorjamb. <sup>5</sup>Requires available Max Trailering Package. <sup>6</sup>Requires available Max Trailering Package and 25" wheels and tires. \*AT4 max trailering capacity is 9,000 lbs. \*\*AT4 max trailering capacity is 6,200 lbs. \*\*\*AT4 max trailering capacity is 3,300 lbs. \*\*\*\*AT4 max trailering capacity is 3,600 lbs.

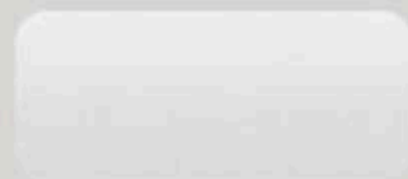


# FIND YOUR TRUE COLORS

## EXTERIOR COLORS



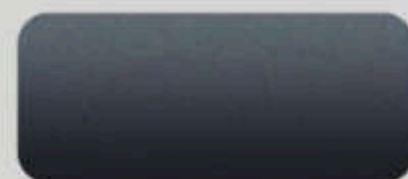
ONYX BLACK<sup>1</sup>



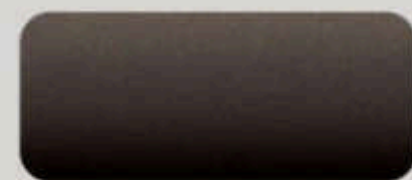
SUMMIT WHITE<sup>2</sup>



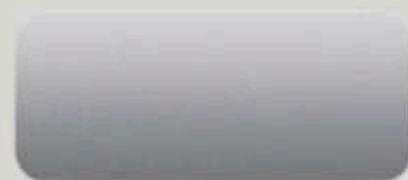
PACIFIC BLUE METALLIC<sup>3</sup>



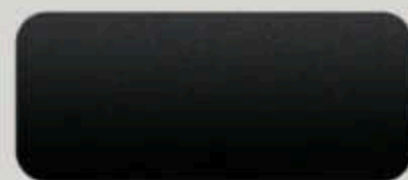
DARK SKY METALLIC<sup>1,4</sup>



BROWNSTONE METALLIC<sup>4,5</sup>



QUICKSILVER METALLIC<sup>4,5</sup>



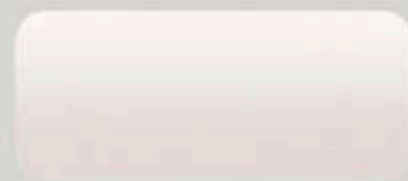
EBONY TWILIGHT METALLIC<sup>5</sup>



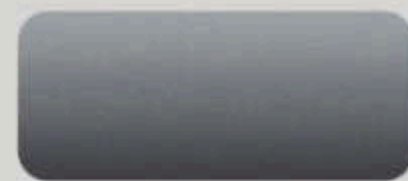
CAYENNE RED TINTCOAT<sup>1,2</sup>



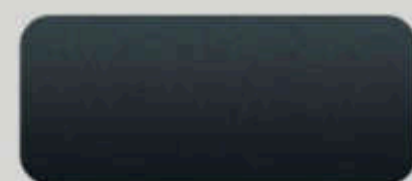
CARDINAL RED<sup>1,2</sup>



WHITE FROST TRICOAT<sup>1,2,3,4</sup>



SATIN STEEL METALLIC<sup>1,2</sup>



HURTER METALLIC<sup>1</sup>  
DENALI EXCLUSIVE

See your GMC dealer or [gmc.com](http://gmc.com) for more interior and exterior color details.

<sup>1</sup>Extra-cost color. <sup>2</sup>Not available on Denali. <sup>3</sup>Not available on Pro. <sup>4</sup>Limited availability. <sup>5</sup>Not available on AT4. <sup>6</sup>Not available on SLE or Elevation.

## INTERIOR COLORS

### PRO



JET BLACK/JET BLACK CLOTH

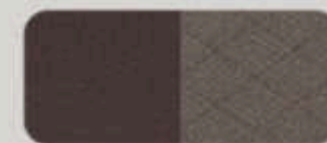


AVAILABLE JET BLACK/JET BLACK CLOTH



JET BLACK/JET BLACK VINYL

### SLE



DARK WALNUT/SLATE CLOTH



JET BLACK/JET BLACK CLOTH



ARENITE TONE



AEGIS PATTERNED ALUMINUM

### ELEVATION



JET BLACK/JET BLACK CLOTH



ARENITE TONE



AEGIS PATTERNED ALUMINUM

### SLT



DARK WALNUT/SLATE PERFORATED FRONT OUTBOARD LEATHER-APPOINTED



JET BLACK/JET BLACK PERFORATED FRONT OUTBOARD LEATHER-APPOINTED



CYPRESS WOOD TONE



AEGIS PATTERNED ALUMINUM

### AT4



JET BLACK/JET BLACK PERFORATED FRONT LEATHER SEATING SURFACES WITH KALAMARI ACCENTS



TECHNICAL APPEARANCE



DARK BRUSHED ALUMINUM

### DENALI



DARK WALNUT/DARK ASH GRAY FORGE PERFORATED LEATHER SEATING SURFACES



JET BLACK/JET BLACK FORGE PERFORATED LEATHER SEATING SURFACES



ASH WOOD



BRUSHED ALUMINUM



# PRECISION-CRAFTED FROM THE GROUND UP



**17"**

17" Bright Silver Painted Steel (RD6) Standard on Pro

17" 6-Spoke Bright Silver Painted Aluminum (QSU) Standard on SLE; Available on Pro



**18"**

18" 6-Spoke Machined Aluminum With Dark Gray Metallic Accents (UHN) Standard on SLT; Available on Pro and SLE

18" Machined Aluminum With Dark Gray Accents (RT5) Standard on AT4



**20"**

20" Gloss-Black Painted Aluminum (RD3) Standard on Elevation

20" Machined Aluminum With Carbon Gray Metallic Accents (NZH) Available on AT4

20" Polished Aluminum (NZM) Available on SLE and SLT

20" Multidimensional Polished Aluminum (RTL) Standard on Denali

20" 6-Spoke Carbon Gray Painted Aluminum (NZQ) Available With AT4 CarbonPro Edition



**22"**

22" Polished Aluminum (SMF) Included and Only Available With Denali Reserve Package or Denali Premium Package



22" 6-Spoke Low-Gloss Black With Machined Accents (SEV) Accessory Wheel<sup>1</sup> Available on SLT and Denali

22" Chrome (SF0) Accessory Wheel<sup>1</sup> Available on SLT, Denali and Denali CarbonPro Edition

22" Midnight Silver With Chrome Inserts (SEW) Accessory Wheel<sup>1</sup> Available on SLT and Denali

22" High-Gloss Black (SGM) Accessory Wheel<sup>1</sup> Available on SLT, Denali and Denali CarbonPro Edition

22" Carbon Flash Metallic (SEZ) Accessory Wheel<sup>1</sup> Available on SLT and Denali

22" Aluminum Multispoke Chrome (SF1) Accessory Wheel<sup>1</sup> Available on SLT and Denali

Find the full selection of Sierra accessory wheels at [gmc.com/accessories](http://gmc.com/accessories).  
<sup>1</sup>Use only GM-approved tire and wheel combinations. See [gmc.com/accessories](http://gmc.com/accessories) for important tire and wheel information, or see your dealer.



# JUST YOUR STYLE



- PREMIUM ALL-WEATHER FLOOR LINERS
- UNDER-SEAT LOCKABLE STORAGE ORGANIZER
- CENTER CONSOLE LOCKABLE STORAGE BOX
- AT4 HIGH-CLEARANCE STEPS

GMC Accessories are a great way to personalize your Sierra Limited—inside and out. They're designed and engineered to meet the Professional Grade standards of your Sierra, as well as your own. We also offer accessories from a lineup of other renowned and proven manufacturers.

Find a full selection of Sierra accessories at [gmc.com/accessories](http://gmc.com/accessories).

\*Use only GM-approved tire and wheel combinations. See [gmc.com/accessories](http://gmc.com/accessories) for important tire and wheel information, or see your dealer.



Accessory wheel shown: 22" Midnight Silver with chrome inserts.  
Due to current supply chain shortages, certain features shown on this spread have limited or late availability, or are no longer available. See the window label or a dealer regarding the features on an individual vehicle.



# POWERED BY PROFESSIONAL GRADE



SIERRA HEAVY DUTY

CANYON

SIERRA 1500 LIMITED

YUKON

TERRAIN

ACADIA

Hunter Metallic color shown on Canyon Denali is limited availability. Terrain Denali preproduction model shown. Actual production model may vary. Late availability.  
Due to current supply-chain shortages, certain features shown on this spread have limited or late availability, or are no longer available. See the window label or a dealer regarding the features on an individual vehicle.



# DRIVE THE CONVERSATION

## NEW VEHICLE LIMITED WARRANTY

**3-YEAR/36,000-MILE BUMPER-TO-BUMPER LIMITED WARRANTY** GMC will warrant each 2022 Sierra Limited from bumper to bumper for 3 years/36,000 miles (whichever comes first; see dealer for details), with no deductible, from the original in-service date of the vehicle, for warrantable repairs that are required as a result of defects due to materials and/or workmanship. Cosmetic corrosion resulting from defects is also covered under the Bumper-to-Bumper Limited Warranty. In addition, rust-through corrosion will be covered for 6 years/100,000 miles (whichever comes first; see dealer for details).

**POWERTRAIN LIMITED WARRANTY** Every 2022 GMC Sierra Limited comes with a 5-year/60,000-mile (whichever comes first) transferable Powertrain Limited Warranty, 24/7 Roadside Assistance and Courtesy Transportation are also offered for the duration of the Powertrain Limited Warranty. Sierra 1500 Limited Light-Duty (LD) pickups equipped with a 3.0L Duramax Turbo Diesel engine are covered by a 5-year/100,000-mile (whichever comes first) transferable Powertrain Limited Warranty, 24/7 Roadside Assistance and Courtesy Transportation are also offered for the duration of the Powertrain Limited Warranty. Please see your GMC dealer for details.

## ONSTAR® AND GMC CONNECTED SERVICES

Connected vehicle services vary by vehicle model and require working electrical system, cell reception and GPS signal. Requires active service plan. OnStar links to emergency services. See [onstar.com](http://onstar.com) for details and limitations.

## GMC CERTIFIED SERVICE

To help your Sierra Limited live up to its performance promise, GMC Certified Service—found exclusively at your GMC dealer—is there. With all the engineering excellence in Sierra Limited, GM-trained technicians have the expertise to help care for it.

## ADDITIONAL NOTES

**A NOTE ON CHILD SAFETY** Always use seat belts and the correct child restraint for your child's age and size, even with airbags. Even in vehicles equipped with the Passenger Sensing System, children are safer when properly secured in a rear seat in the appropriate infant, child or booster seat. Never place a rear-facing infant restraint in the front seat of any vehicle equipped with an active frontal airbag. See the Owner's Manual and the child safety seat instructions for more safety information.

**TRAILERING AND OFF-ROAD DRIVING INFORMATION** Please go to [gmc.com](http://gmc.com) and carefully review the vehicle Owner's Manual for important safety information about trailering or off-road driving in your vehicle.

**FLEET ORDERS** Some standard content may be deleted on fleet orders. See dealer for details.

**ENGINES** GMC products are equipped with engines produced by GM Powertrain or other suppliers to GM worldwide. The engines in GMC products may also be used in other GM makes and models.

**GMC.COM** See more of Sierra Limited on our website: [gmc.com/sierra](http://gmc.com/sierra). More photos and information; hot links to related subjects; convenient dealer locator; pricing guide; spec out your own vehicle. Or call 1-800-GMC-8782.

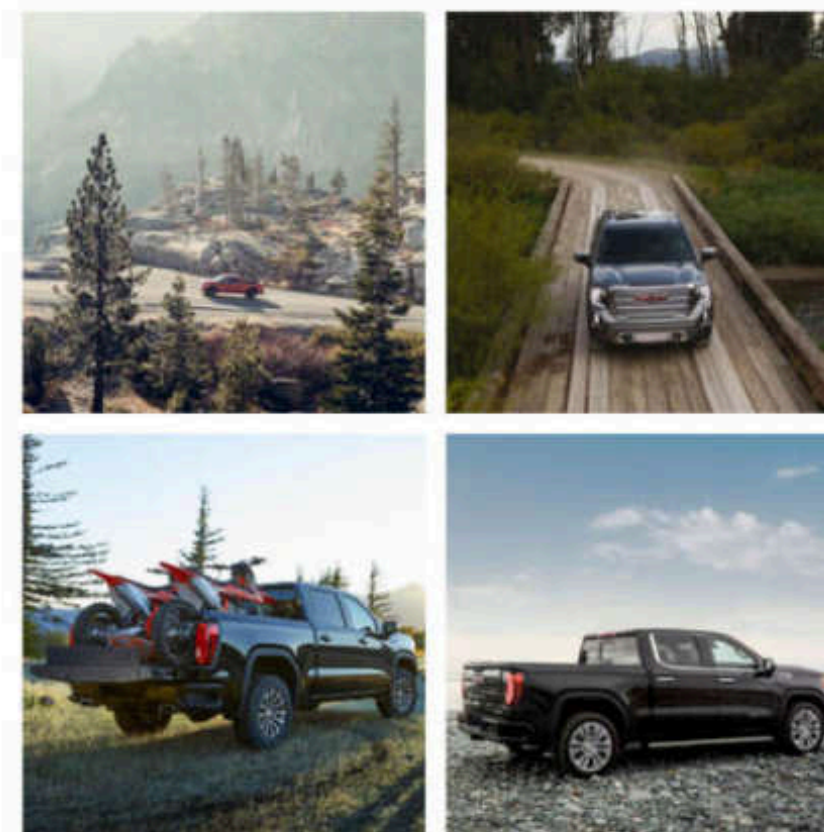
**IMPORTANT WORDS ABOUT THIS CATALOG** We have tried to make this catalog comprehensive and factual. We reserve the right, however, to make changes at any time, without notice, in prices, colors, materials, equipment, specifications, models and availability. Specifications, dimensions, measurements, ratings and other numbers in this catalog and other printed materials provided at the dealership or affixed to vehicles are approximations based on design and engineering drawings, prototypes and laboratory tests. Your vehicle may differ due to variations in manufacture and equipment. Since some information may have been updated since the time of publication, please check with your GMC dealer for complete details. GMC reserves the right to lengthen or shorten the model year for any product for any reason or to start and end model years at different times. Certain vehicle features may lose their usefulness over time due to obsolescence from technological changes. Unless otherwise noted, all claims based on GM Large Pickup segment and latest available competitive information available at time of publication. Excludes other GM vehicles.

**AN IMPORTANT NOTE ABOUT ALTERATIONS AND WARRANTIES** Installations or alterations to the original equipment vehicle (or chassis) as distributed by General Motors are not covered by the General Motors New Vehicle Limited Warranty. The special body company, assembler, equipment installer or upfitter is solely responsible for warranties on the body or equipment and any alterations (or any effect of the alterations) to any of the parts, components, systems or assemblies installed by GM. General Motors is not responsible for the safety or quality of design, features, materials or workmanship of any alterations by such employers.

**ASSEMBLY** GMC vehicles and their components are assembled or produced by different operating units of General Motors, its subsidiaries or suppliers to GM worldwide. We sometimes find it necessary to produce GMC vehicles with different or differently sourced components than originally scheduled. Since some options may be unavailable when your vehicle is assembled, we suggest you verify that your vehicle includes the equipment you ordered and that, if there were changes, they are acceptable to you.

**GMMOBILITY.COM** (1-800-323-9935) GM Mobility offers financial assistance for eligible adaptive equipment to make automotive travel easier for persons with disabilities or special transportation needs. To learn more about special GM Mobility offers, visit [gmmobility.com](http://gmmobility.com).

©2022 General Motors. All rights reserved. GM, the GM logo, GMC, the slogans, emblems, vehicle model names, vehicle body designs and other marks appearing in this catalog are the trademarks and/or service marks of General Motors, its subsidiaries, affiliates or licensors. Facebook is a registered trademark of Facebook, Inc. Twitter is a registered trademark of Twitter, Inc. Instagram is a registered trademark of Instagram, LLC. Sirius, XM and all related marks and logos are trademarks of SiriusXM Radio, Inc. Google, Android, Android Auto, Google Maps and other marks are trademarks of Google LLC. Apple, CarPlay, iPhone and Siri are registered trademarks of Apple, Inc.



GMC.COM | #GMC | #LIKEAPRO | #GMC Sierra



Due to current supply-chain shortages, certain features shown on this spread have limited or late availability, or are no longer available. See the window label or a dealer regarding the features on an individual vehicle.