

1992 GMC TRUCK.
SUBURBAN



GMC
TRUCK



A TRUCK COMPANY'S IDEA OF AN E X E M P L A R Y L U X U R Y W A G O N

Take all the good things you've come to know about our legendary GMC Suburban and make them better — through cutting edge truck engineering, and a cunning application of the immutable laws of aerodynamics. **O**ur brand new 1992 edition is lower. It's sleeker. And it rides with the quiet smoothness of a new longer wheelbase and the safety of a new 4-wheel anti-lock braking system. **I**t has more cargo space, more leg room, more comfort, more visibility, and it cleaves through the atmosphere with a crisper coefficient of drag. **I**n short, our 1992 Suburban is everything you'd expect from a company whose only business is trucks — and has been for over 80 years.

INDEX

The GMC Truck Heritage . . .	2-3
Interior/Engineering	4-5
Exterior/Engineering	6-7
Colors/Seating Availability . . .	8
Dimensions & Technical Data	9
Exterior Equipment	10
Interior Equipment	11
Order Worksheet	11a
Quick Order EZ-Specs	11b
Financing/ Owner Benefits	12-13
Commitment Plus	14

On cover.
2WD Suburban
SLE, shown in
solid Dark Teal
Metallic, with
available
equipment.

At left.
In a setting
befitting
America's
premier luxury
truck wagon,
4WD Suburban
SLE shown in
Deluxe 2-Tone
with Onyx
Black and
Quicksilver
Metallic, and
available
equipment,
including
available heavy
duty trailering
special equip-
ment package
(Z82).



THE STRENGTH OF EXPERIENCE.

WHAT MAKES SUBURBAN A GMC TRUCK INSIDE

EVEN MORE COMFORT FOR UP TO NINE PEOPLE, EVEN MORE ROOM FOR CARGO.

One of the best things about Suburban has always been all the room it gives you inside — interior accommodations as wide, spacious and gracious as this great land of ours.

For 1992 we've made even more of this good thing. The four doors now open wider for easier entry and exit. Up front there's standard bench seating or available 40/60 split bench or bucket seats. The middle seating's been redesigned to make it easier to get to and from the rear seats. There's even a new 6-inch deep footwell to give third-seat passengers more room to stretch their legs than ever before.

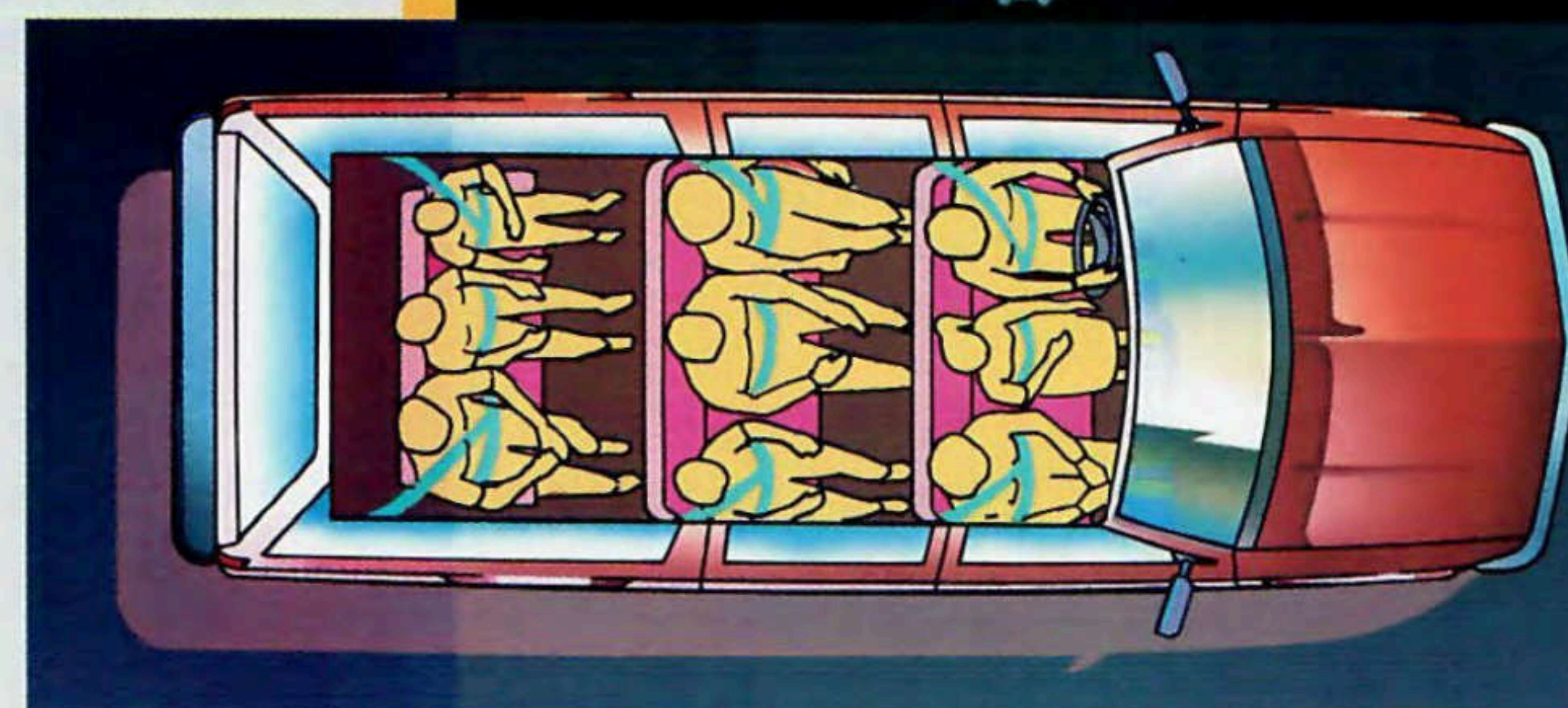
To help you better enjoy all that our Suburban offers inside, there's a whole host of new luxury touches, comforts and thoughtful conveniences: new ducting, vents and available auxiliary climate control for rear-seat passengers. A new instrument cluster that's both more stylish and easier to read at a glance.

New "hidden" storage space in the third-seat footwell (when not in use) and in the inside jack storage area. New cargo net tiedowns. Available rear window washer/wiper and defogger. And your choice of rear panel doors or a combination lift-glass/fold-down tailgate for easy access to the increased cargo space.

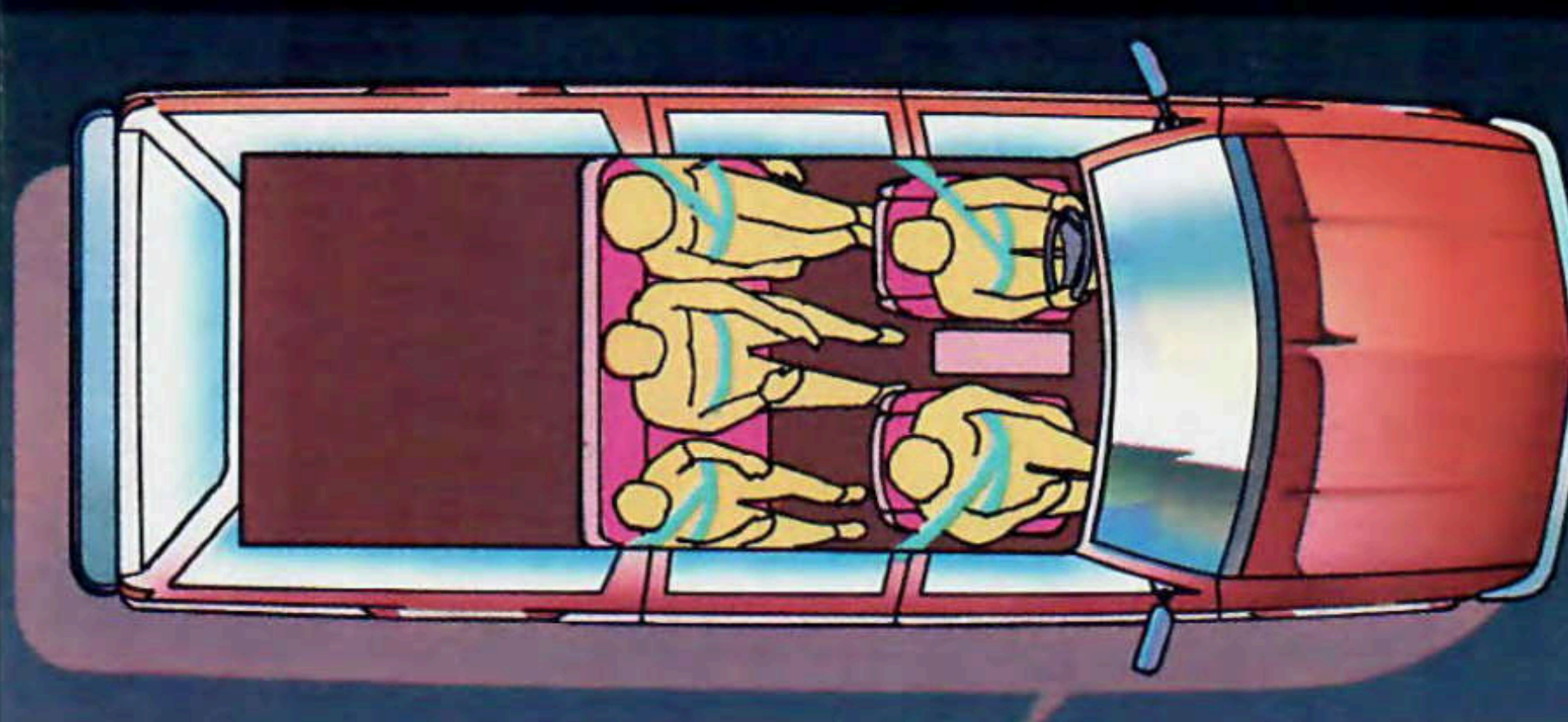
But to fully experience just how new our Suburban truly is, you have to drive one. We believe you'll find the ride, the handling ease, the comfort and quiet remarkable — even by GMC Suburban standards. In fact, you may forget that Suburban is, at its heart and soul, a hard-working GMC truck. However, as you'll read on the next two pages, that's something we haven't forgotten.

Above right. Available highback bucket seats with inboard/outboard armrests and roof and floor consoles.

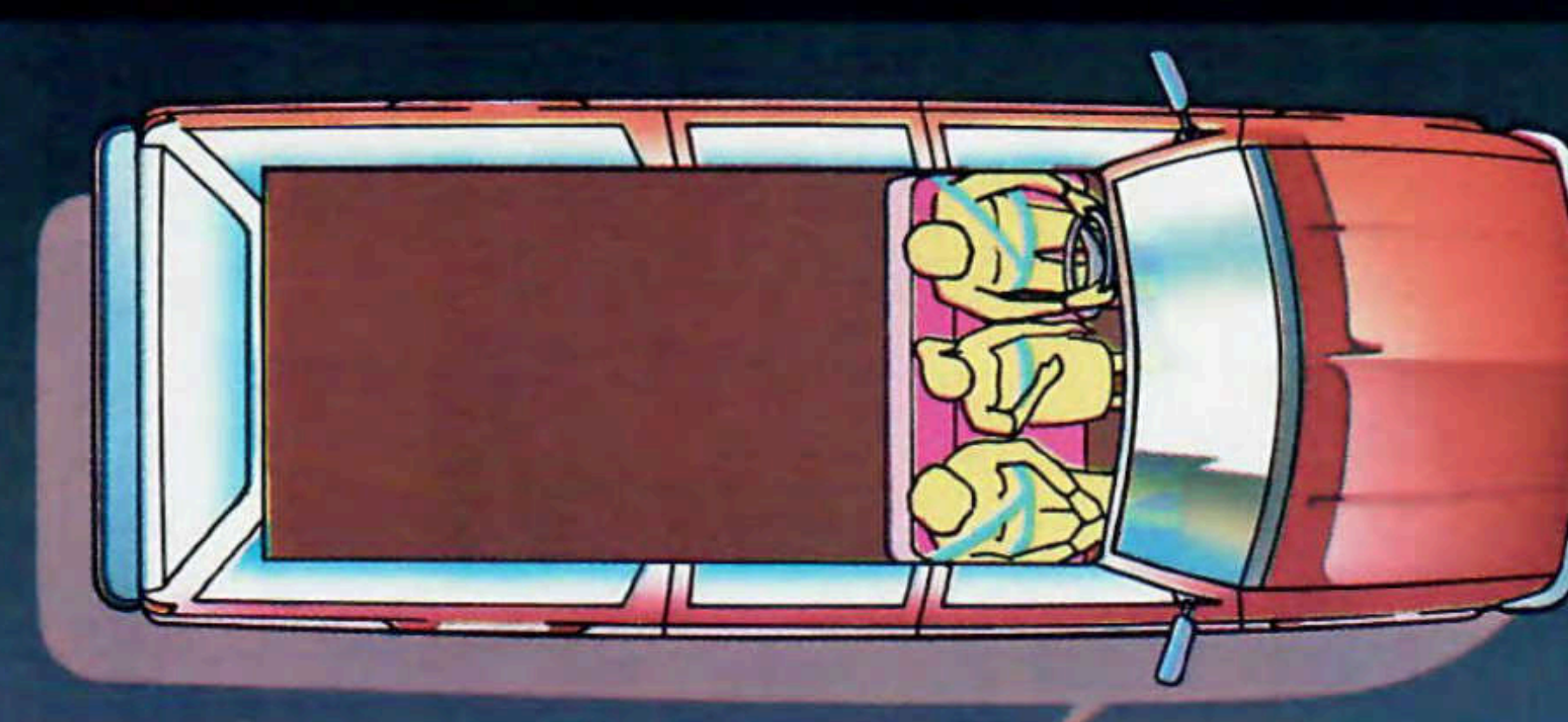
At right. Available instrumentation with tachometer, shown with available (UM6) electronically tuned AM/FM stereo radio with cassette player. A CD player is available as a dealer installed option. Ask for details.



A 9-passenger, with front, center and rear benches, each seating three.



B 5-passenger, with available two front high back buckets and center 3-passenger bench.



C 3-passenger bench seating standard. (Two front high back reclining bucket seats also available.)

WHAT MAKES SUBURBAN A GMC TRUCK OUTSIDE

MORE WHEELBASE, MORE TOWING POWER. AND THE SAFETY OF NEW 4-WHEEL ANTI-LOCK BRAKING.

As you can see, you've never seen a Suburban quite as elegant, or quite as beautiful, as this one. The stance is longer and lower, the lines flow smoothly together — compliments of an ingenious blend between style and aerodynamics. Notice the "tumble-home" (where the side windows flow organically into the roofline). See the way the rear sheet metal tucks in to cheat the wind. Even the curved body side glass is bonded to improve aerodynamics and to reduce interior noise — and there's 30-percent more glass area, for enhanced visibility and safety.

What's even more impressive, however, is the engineering that's gone into Suburban for '92: Independent front and lower wishbone suspension (with coil springs on 2WD and torsion bars on 4WD) that helps provide outstanding tracking and stability, countering road harshness to give you im-

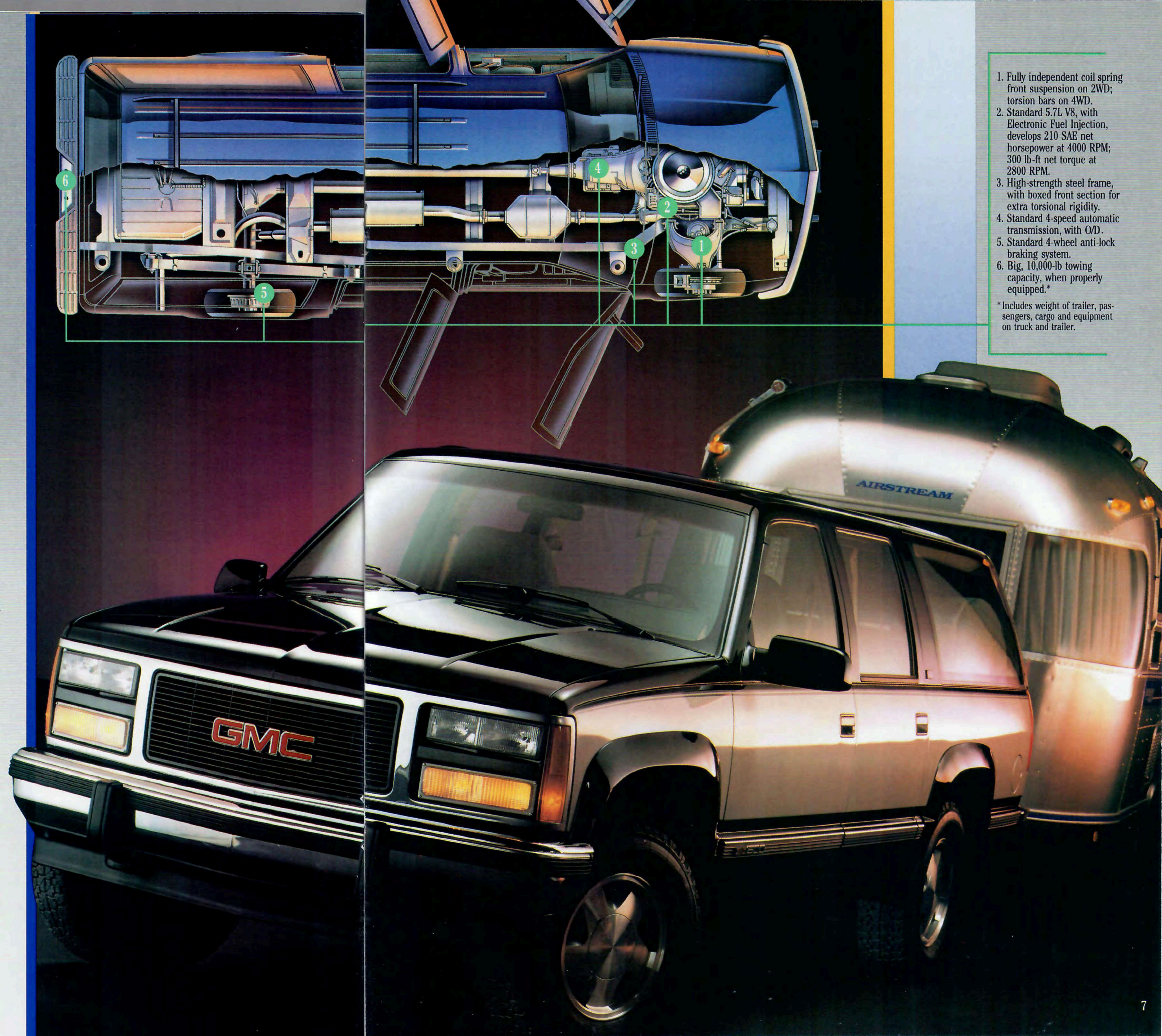
proved traction both on- and off-road. There's a 42-gallon fuel tank to help you go farther between fill-ups. Not to mention the electronically controlled, heavy-duty over-drive automatic transmission, the 4L80E, standard on Suburbans over 8500 GVWR. Underhood is the proven, standard 350 CID V8, made even better with advances in starting, idling, drivability and durability. Maximum towing capability, properly equipped, is now a full 10,000 pounds,* 500 more than before. And — standard for 1992 — is the added safety of anti-lock brakes on all four wheels. 4WAL that operates in both 2- and 4-wheel drive.

So, now, experience for yourself unique new levels of on- and off-road precision, comfort and luxury.** In a whole new class of full-size, luxury utility wagons.

*Includes weight of trailer, passengers, cargo and equipment on truck and trailer.

**Excludes other GM products.

At right. ► Great ride, improved handling are standard with the new Suburban for '92. 4WD Suburban SLE is shown in Deluxe 2-Tone with Onyx Black and Quicksilver Metallic and available equipment, including heavy duty trailering equipment package (Z82).



1. Fully independent coil spring front suspension on 2WD; torsion bars on 4WD.
2. Standard 5.7L V8, with Electronic Fuel Injection, develops 210 SAE net horsepower at 4000 RPM; 300 lb-ft net torque at 2800 RPM.
3. High-strength steel frame, with boxed front section for extra torsional rigidity.
4. Standard 4-speed automatic transmission, with O/D.
5. Standard 4-wheel anti-lock braking system.
6. Big, 10,000-lb towing capacity, when properly equipped.*

*Includes weight of trailer, passengers, cargo and equipment on truck and trailer.

COLOR AND TRIM

EXTERIOR COLORS



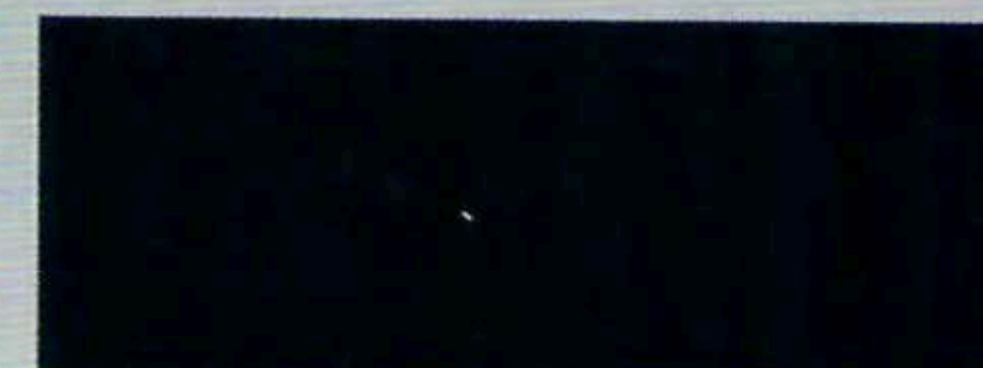
Brilliant Blue Metallic #22



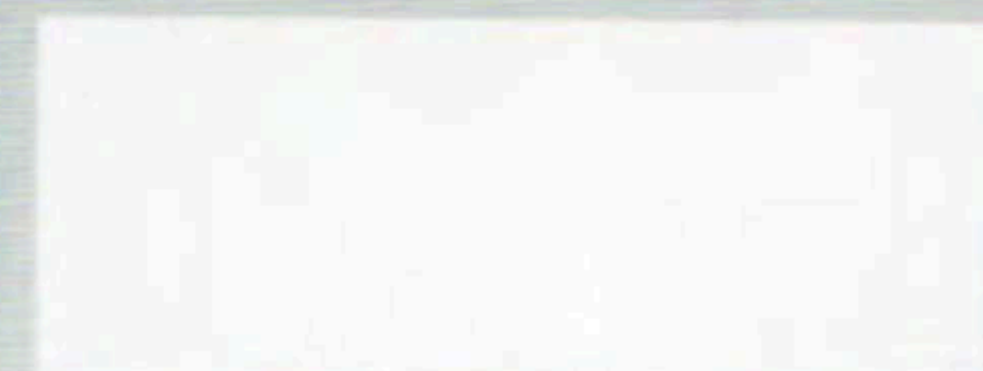
Smoke Blue Metallic #27



Dark Teal Metallic #36



Onyx Black #41



Summit White #50



Beige Metallic #57



Fire Red #74



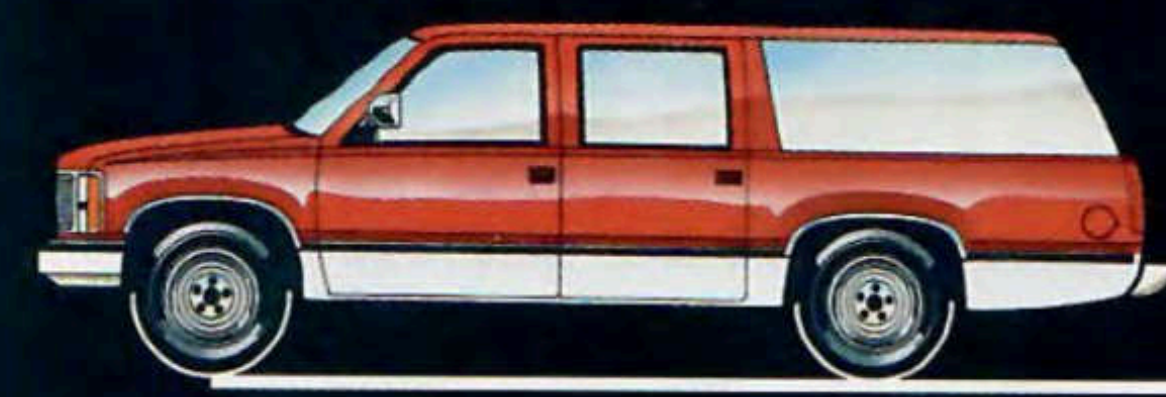
Dark Garnet Metallic #76



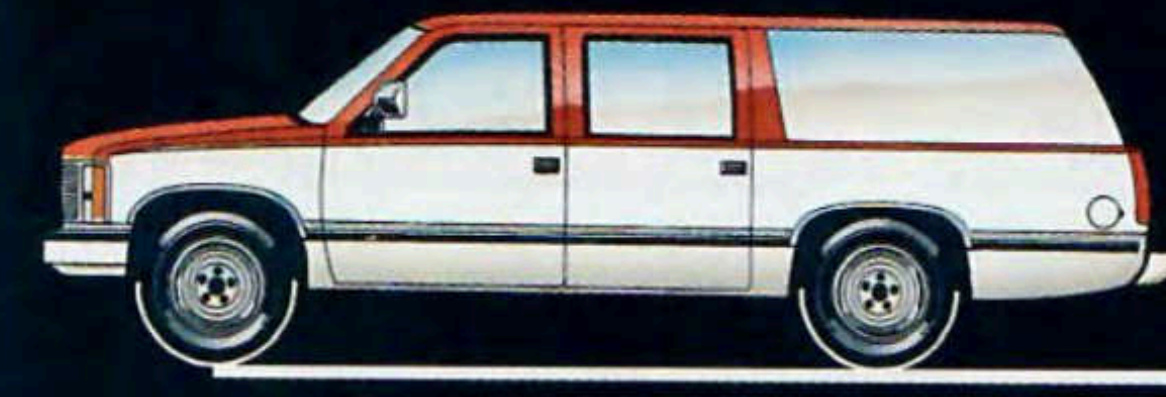
Quicksilver Metallic #96



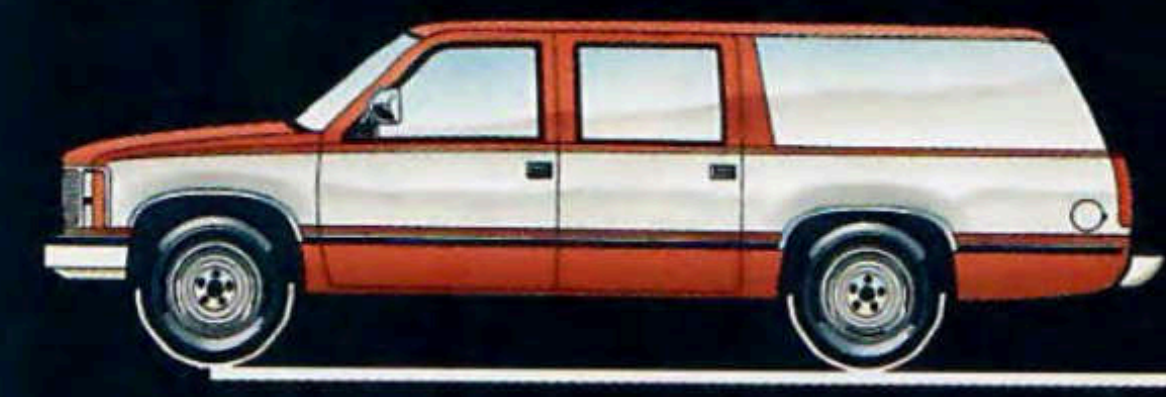
Slate Metallic #97



Conventional 2-Tone (ZY2) is available for all models. Also available with upper body decal striping.



Special 2-Tone (ZY3) includes dual-color decal striping at the upper styling feature line.



Deluxe 2-Tone (ZY4) also includes dual-color decal striping at the upper styling feature line.

EXTERIOR-INTERIOR COLOR COMPATIBILITY

EXTERIOR SOLID COLORS	CODE	RECOMMENDED INTERIOR TRIM COLORS*			
		LT. BEIGE	BLUE	GARNET	GRAY
Brilliant Blue Metallic	22		■		
Smoke Blue Metallic	27		■		
Dark Teal Metallic	36	■			■
Onyx Black	41	■		■	■
Summit White	50	■	■	■	■
Beige Metallic	57	■		■	
Fire Red	74	■			■
Dark Garnet Metallic	76	■		■	■
Quicksilver Metallic	96	■	■	■	■
Slate Metallic	97		■	■	■

*Deviations not permitted. See your GMC Truck Dealer for specific applications.

MODEL SELECTOR/SEAT AVAILABILITY

Body Type	Drive Type	Trim Level	Front Bench Seat	Front Reclining Bucket Seats	Center Folding Bench Seat	Rear Bench Seat	Total Available Passenger Capacity	Maximum Cargo Capacity (cu ft)*
1500	2WD	SL	Std	Avail	Avail	Avail	2-9	167.0
	4WD							
1500	2WD	SLE	Std	Avail	Avail	Avail	2-9	167.0
	4WD							
2500	2WD	SL	Std	Avail	Avail	Avail	2-9	167.0
	4WD							
2500	2WD	SLE	Std	Avail	Avail	Avail	2-9	167.0
	4WD							

*With center and rear bench seats removed.



SELECTED OPTIONS



◀ Front and rear air conditioning with dual controls, and rear interior roof venting (C69).



◀ Rear window washer/intermittent wiper and rear defogger package (ZP6).



◀ 6-way power seat adjuster, driver's side only (AG9).



◀ (As shown in driver's side control module) Power door locks and power windows convenience package (ZQ2); along with left and right-hand electric remote control exterior mirrors (D48) — must have ZQ2 to order D48.



◀ Suburban with panel doors (ZW9) shown with available rear window defogger (C49) and available heavy duty trailering special equipment (Z82).

▶
S-Standard
A-Available
1-Except in California.
2-Requires power door locks and windows.

Wheels. Suburban wheel selection is comprehensive. Clockwise, from top left: cast aluminum 2WD (N90); full wheel cover (P01); standard wheel; bright hubcap and trim ring (N67); cast aluminum 4X4 (PF4).

EXTERIOR EQUIPMENT

MODEL	SUBURBAN		
TRIM LEVEL	SL (STD)	SLE	
BUMPERS/BUMPER GUARDS	Chromed front and rear bumpers with black rub strips and rear step pads	S	S
	Black front bumper guards	—	S
GRILLE/FRONT LAMPS	Light/dark argnet painted grille and lamp bezels with GMC grille lettering and single-rectangular halogen headlamps	S	—
	Chromed grille and lamp bezels with dark argnet paint trim, GMC grille lettering and dual-rectangular halogen headlamps	—	S
LAMPS	Halogen headlamps	S	S
	Roof marker lamps	A ¹	A ¹
MIRRORS, DUAL REARVIEW	Black painted electric below-eyeline type	A ²	A ²
	Stainless steel below-eyeline type	A	A
	Stainless steel camper type	A	A
	Black painted below-eyeline type	S	S
MOLDINGS	Black body side	S	—
	Black plastic body side/rear moldings with bright trim	—	S
	Bright wheel opening moldings	A	S
WHEELS/WHEEL TRIM	Silver-painted wheels and black hubcaps	S	S
	15" Standard 2WD		
	16" Standard 4WD		
	Silver-painted wheels with bright hub ornaments and trim rings	A	A
	Bright full wheel covers	A	S
	Cast aluminum wheels	A	A

FUNCTIONAL EQUIPMENT

MODEL	SUBURBAN		
TRIM LEVEL	SL (STD)	SLE	
HEADLAMP WARNING BUZZER	Headlamps on	S	S
INSTRUMENT CLUSTER	Full analog gage display includes fuel level, oil pressure, engine coolant temp, voltmeter and trip odometer	S	S
	Same as above plus tachometer	A	A
TOW HOOKS	4x4 models only	S	S
WINDSHIELD WIPER/WASHERS	Electric: 2-speed wipers with intermittent wiper feature; wet-arm type washers	S	S
	Tailgate window	A	A

INTERIOR EQUIPMENT

MODEL	SUBURBAN		
TRIM LEVEL	SL (STD)	SLE	
ASSIST HANDLES	Roof-mounted at outboard passenger front and center seat positions	S	S
CIGARETTE LIGHTER WITH ASHTRAY ILLUMINATION		S	S
CONVENIENCE PACKAGES	Power door locks and power side windows	A	A
	Tilt-Wheel™ steering and electronic speed control	A	A
FLOOR COVERING, FRONT COMPARTMENT	Black vinyl	S	—
	Color-keyed carpeting	—	S
	Floor mats, color-keyed, removable	—	S
GLASS	Tinted glass all around	S	S
	Deep-tinted glass all around	A	A
	Power liftgate release	S	S
HEADLINER	Color-keyed foam-backed cloth	S	S
HEATING/COOLING/DEFOGGING	Air conditioning, front	A	A
	Air conditioning, front and rear	A	A
	Cold climate package	A	A
	Electric rear window defogger	A	A
	Heavy-duty heater/side window defogger	S	S
	Rear auxiliary heater	A	A
HORN	Dual-electric	S	S
INSTRUMENT PANEL (MISCELLANEOUS)	Glove box with latched door and beverage holder provisions	S	S
	Integral fuse block with access door	S	S
	Tip-out ashtray	S	S
	Cigarette lighter	S	S
LAMPS	Combination front dome and reading lamp	—	S
	Dome lamps, front and rear	S	S
	Door/tailgate-operated dome lamp switches	S	S
	Glove box	—	S
	Underhood reel type	—	S
MIRRORS	Prismatic type rearview	S	S
	Left and right hand visor, illuminated, w/strap	—	S
RADIOS, ELECTRONICALLY-TUNED*	AM/FM stereo with seek-scan/digital clock	S	S
	AM/FM stereo with seek-scan/digital clock/stereo cassette tape	A	A
	AM stereo/FM stereo with seek-scan/digital clock/stereo cassette tape with search-repeat/graphic equalizer†	A	A
STEERING WHEEL	Custom 4-spoke	S	—
	Sport 4-spoke, simulated leather	—	S
STORAGE CONSOLE	Floor-mounted	—	A ¹
	Roof-mounted	—	A ¹
SUNSHADES	Color-keyed padded, vinyl, LH/RH	S	—
	Color-keyed padded cloth, w/lighted vanity mirrors LH/RH	—	S

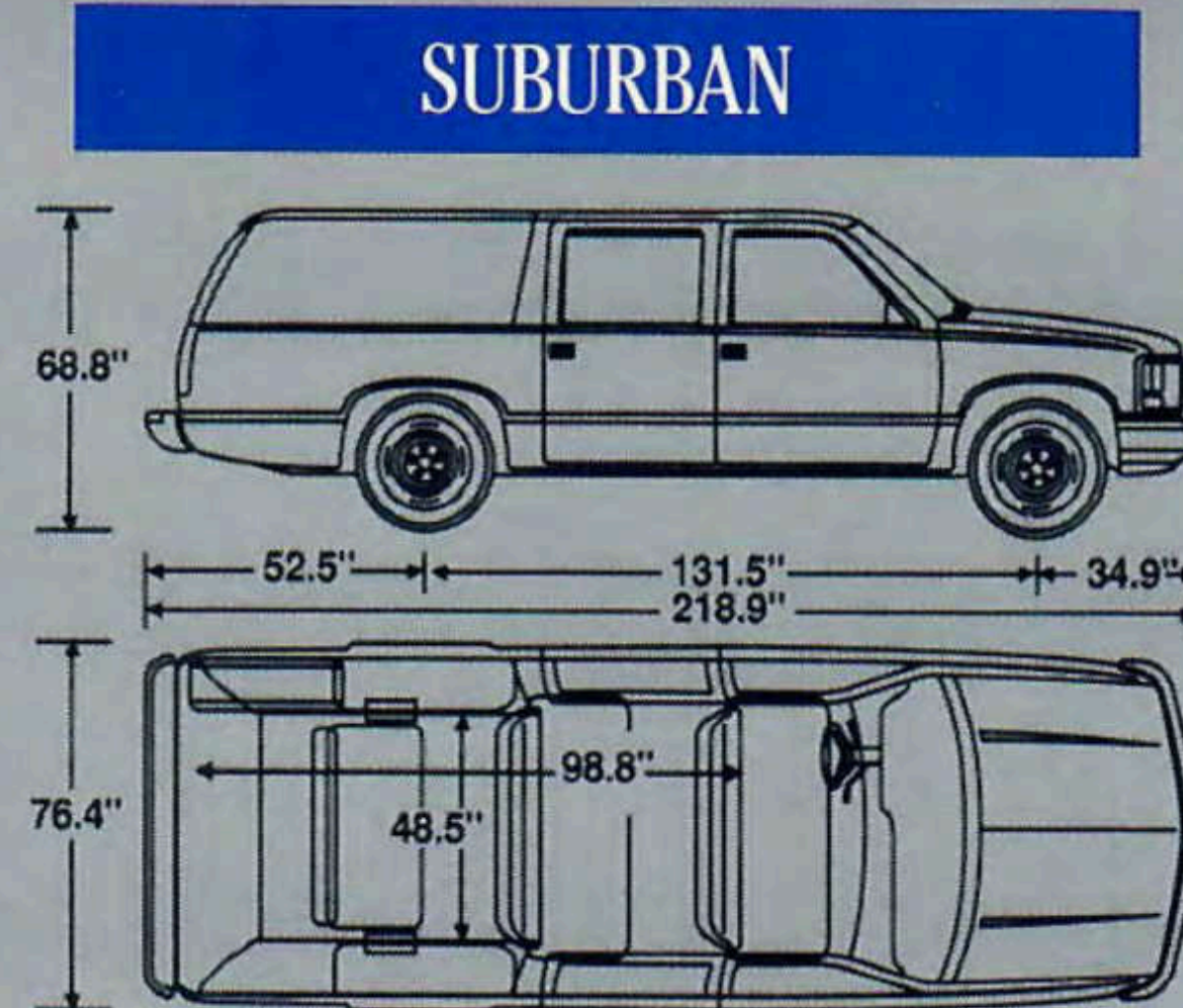
S-Standard
A-Available

¹-Part of available reclining front bucket seat option.

† Receives C-Quam® AM stereo broadcasts. Most AM stations across the country broadcast in C-Quam but some do not. Check your local stations for compatibility in your area.

* A CD player is available as a dealer installed option. Ask for details.

DIMENSIONAL DATA



ENGINE TECHNICAL DATA

TYPE	V8 GASOLINE		
Displacement (Cu in)	5.7L (350)	5.7L (350)	7.4L (454) [†]
Availability	under 8500 GVWR	over 8500 GVWR	2500 models only*
Ordering Code	L05	L05	L19
Bore and Stroke, inches	4.0 x 3.48		4.25 x 4.00
Compression Ratio	9.3:1	8.6:1	7.9:1
Fuel Delivery	electronic fuel injection		
SAE Net Horsepower @ rpm	210 @ 4000	190 @ 4000	230 @ 3600
SAE Net Torque (lb-ft) @ rpm	300 @ 2800	300 @ 2400	385 @ 1600

Requires KC4 Engine Oil Cooler.

GROSS COMBINATION WEIGHT RATING BY ENGINE AND AXLE RATIO FOR AUTOMATIC TRANSMISSIONS

Engine	GCWR (lb) ¹ by Engine and Axle Ratio					
	11,000	12,000	13,500	14,500	15,000	17,000
	Rear Axle Ratio					
5.7L EFI V8 Gas	3.42	3.73	4.10	—	—	—
7.4L EFI V8 Gas	—	—	—	3.73	—	4.10

¹—Includes weight of truck, trailer, passengers, cargo and equipment.

TECHNICAL INFORMATION

MODEL	Suburban			
DRIVE TYPE	2-Wheel		4-Wheel	
SERIES	C1500	C2500	K1500	K2500
ENGINE ²	5.7L V8	5.7L*/7.4L V8	5.7L V8	5.7L*/7.4L V8
FRONT SUSPENSION	independent, coil springs		torsion bars	
Capacity (lb)	3250	3800	3600	3800
Spring capacity (lb) ¹	standard	1625	1900	1850
	available	—	—	2250
Shock absorber diameter (in)	standard	32 mm	32 mm	32 mm
Stabilizer bar diameter (in)	standard	1.06	1.06	1.25
	available	—	1.25	—
REAR SUSPENSION	Salisbury axle, leaf springs			
Axle capacity (lb)	4000	6000	4000	6000
Spring capacity (lb) ¹	2000	2800	2000	2800
Shock absorber diameter (in)	standard	32 mm	32 mm	32 mm
SERVICE BRAKES	hydraulic, front disc/rear drum with 4-wheel anti-lock system			
Power booster type	vacuum			
PARKING BRAKES	cable to rear wheels			
STEERING TYPE	power			
TIRES	steel-belted, radial-ply, all-season		steel-belted, radial-ply, all-season	
	standard	P235/75R15	LT245/75R16E	LT225/75R16D LT245/85R16E
	available	various (consult your GMC Truck dealer)		
FUEL TANK CAPACITY (nominal gallons)	42			
FREEDOM BATTERY	12-Volt, maintenance-free			
Cold cranking amp rating	630			
ALTERNATOR (amps)	100			

¹—At ground, each. ²—See chart above for details.

*Over 8500 GVWR version

FINANCING

Your GMC Truck dealer can make it easy for you to buy or lease your new GMC Truck vehicle through GMAC or other sources. With GMAC and most other financing sources, the entire transaction can be handled right in the showroom. While buying gives you the traditional advantages of ownership, leasing offers other advantages. With GMAC leasing you can drive up to 15,000 miles a year without penalty. At the end of the lease, you have the option of purchasing your vehicle at an amount determined at the inception of the lease.

IMPORTANT: A WORD ABOUT THIS CATALOG

We have tried to make this catalog as comprehensive and factual as possible. We reserve the right, however, to make changes at any time, without notice, in prices, colors, materials, equipment, specifications, models and availability. Also, tires shown in illustrations are supplied by various manufacturers. Since some information may have changed since the time of printing, please check with your GMC Truck dealer for complete details.

A WORD ABOUT ENGINES.

GMC Truck models are equipped with engines produced by different operating units of GM, its subsidiaries or suppliers to GM worldwide.

A WORD ABOUT ASSEMBLY OF GMC TRUCK MODELS.

GMC Truck models are assembled by different operating units of General Motors, its subsidiaries or suppliers to GM worldwide. GMC Truck models incorporate thousands of components produced by different operating units of GM, its subsidiaries or suppliers to GM worldwide. We sometimes find it necessary to produce GMC Truck models with different or differently sourced components than originally

scheduled. All such components have been approved for use in GMC Truck models and will provide the quality performance associated with the GMC Truck name. Since some options may be unavailable when your vehicle is assembled, we suggest you verify that your vehicle includes the equipment you ordered or, if there are changes, that they are acceptable to you.

A WORD ABOUT UPDATED SERVICE INFORMATION.

GMC Truck Division regularly sends its dealers useful bulletins about GMC Truck products. GMC Truck Division monitors product performance in the field. We then prepare bulletins for servicing our products better. Now you can get these bulletins, too. Ask your dealer. To get ordering information, call toll free 1-800-551-4123.

A WORD ABOUT CORROSION PROTECTION

GMC Truck models are designed and built to resist corrosion. All body sheet metal components are warranted against rust-through corrosion for 6-years/100,000 miles. See your dealer for terms and conditions of the limited warranty. Application of additional rust inhibiting materials is not required under the corrosion coverage.

Because it's a GMC Truck, your new Suburban comes with many significant benefits, among them: A 4-wheel anti-lock braking system. In addition, from its comprehensive Bumper to Bumper Plus warranty to its long list of standard safety features, your new Suburban is also one of the best protected vehicles in our history. We invite you to read about these important benefits.

1 1992 GMC TRUCK SAFETY FEATURES

OCCUPANT PROTECTION:

- Manual lap/shoulder safety belts, outboard front and rear seat positions Manual lap safety belts, center front/rear seat positions, where applicable
- Energy absorbing steering column
- Energy absorbing instrument panel
- Energy absorbing seat back tops
- Interlocking door latches
- Safety armrests
- Break-away manual

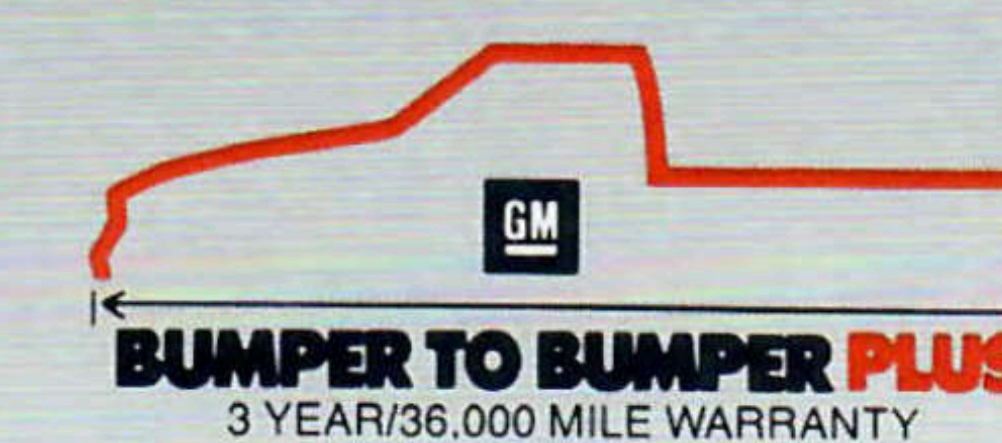
- day/night inside rearview mirror Security door locks and door retention components
- Laminated windshield and rear door quarter windows
- Tempered safety glass side windows, also rear windows.

ACCIDENT AVOIDANCE:

- 4-wheel anti-lock braking system
- Brake system with dual master cylinder and warning light
- Safety road wheel rims
- Side marker lamps and reflectors
- Parking lamps that illuminate with headlamps
- Four-way hazard warning flashers
- Back-up lamps
- Directional signal control with lane change feature
- Windshield washer, defroster and multi-speed wipers
- Outside left and right rearview mirrors
- Starter safety switch
- Dual action hood latch
- Low glare finish on inside windshield moldings, wiper arms and blades, metallic steering wheel surfaces
- Dual

- sun visors Illuminated heater and defroster controls
- Tires with built-in tread wear indicators
- Audible brake lining wear indicators, w/disc brakes
- Pressure relief fuel cap.

1 1992 GMC TRUCK WARRANTY



Your new Suburban is protected by one of the most comprehensive warranties in the industry: GM's Bumper to Bumper Plus. The entire vehicle (except tires, which are covered by their manufacturer) is warranted for repairs, including parts and labor, to correct defects in materials or workmanship for 3 years or 36,000 miles. This warranty is transferrable and covers towing to the nearest GM dealer should towing be necessary. In addition, any body sheet metal rust-through is covered for 6 years or 100,000

OWNER BENEFITS

miles. There is no deductible during the warranty period for warranty repairs. See your GMC Truck dealer for terms of this limited warranty.

LOW MAINTENANCE

Another benefit of your new Suburban is its low required maintenance. Traditional engine tuneups, for example, are virtually eliminated. Depending on your type of driving, oil changes are recommended only every 6 months or 7,500 miles. Be sure to read the owner's manual for the complete maintenance schedule for your vehicle and type of driving you do. Finally, the benefits of your new GMC Suburban extend beyond the vehicle itself. See the back cover of this catalog for highlights of GMC Truck's Commitment Plus and new Roadside Assistance Program.

COMMITMENT PLUS:

A CUSTOMER SATISFACTION PROGRAM AS DISTINCTIVE AS THE SUBURBAN ITSELF.

Our goal is to make your new Suburban the most rewarding vehicle you've ever owned. We want you to be satisfied with the service, care and consideration of your GMC Truck dealer. To that end, we and the more than 2400 GMC Truck dealers have developed Commitment Plus. Among its benefits to you:

- Roadside assistance — available to you 24 hours a day. Dialing a 1 (800) number gives you access to emergency services such as towing, tire change assistance, locksmith services, and more for as long as you own your Suburban.
- Keeping in touch with you throughout your ownership with one thought in mind... complete customer satisfaction.
- Complimentary 3000-mile inspection and maintenance service, including oil and oil filter change.
- A complimentary full tank of fuel upon delivery.

See your GMC Truck dealer for full details on this important additional benefit of GMC Truck ownership. Applies to retail sales only.

GMC and GMC Truck are registered trademarks of General Motors Corp. © 1991 GM Corp. All rights Reserved.

GM® GMAC® Suburban® Vortec® Insta-Trac® and Deuce® are registered trademarks of General Motors Corporation.

GMC Truck™ and Commitment Plus/GMC Truck Logo™ are trademarks of General Motors Corporation.

5006-92

Litho in USA

