

2023 GMC

TERRAIN



GMC

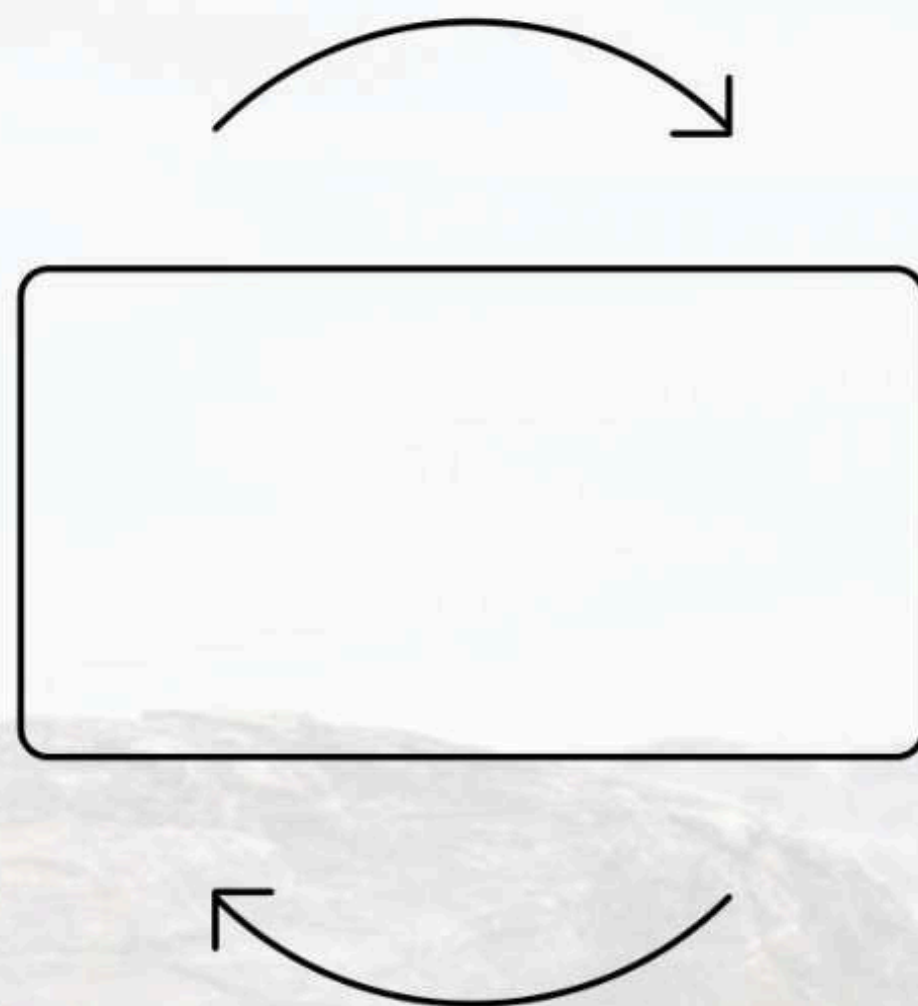
NAVIGATION GUIDE

3

CLICK THE HOME BUTTON TO RETURN TO THE TABLE OF CONTENTS.



1



ROTATE FOR A BETTER VIEWING EXPERIENCE.

2

CLICK ON UNDERLINED TEXT TO REVEAL IMPORTANT LEGAL INFORMATION.

— USB Ports¹

4

CLICK THE X TO CLOSE DISCLOSURES.

¹Not compatible with all devices.



TERRAIN CONTENTS

CLICK ANY TITLE TO EXPLORE A SPECIFIC CHAPTER.

3 INTRODUCTION

18 ELEVATION EDITION

28 CONNECTIVITY

35 ACCESSORIES

6 DENALI

20 SAFETY AND
TECHNOLOGY

32 EXTERIOR COLORS

39 IMPORTANT WORDS
AND LEGAL DISCLOSURES

12 AT4

24 CAPABILITY

33 INTERIOR COLORS
AND TEXTURES

16 SLE AND SLT

26 VERSATILITY

34 WHEELS



MEET THE 2023 GMC TERRAIN

Impressive on every level, the Terrain compact SUV is perfectly equipped for the way you live—and the places you're heading.





PREMIUM, CAPABLE AND READY FOR YOUR LIFE

Get the most out of every day in the
stylish 2023 Terrain.



WHEREVER LIFE LEADS, THERE'S A TERRAIN TO TAKE YOU THERE



SLT shown.

Terrain SLE and SLT stand out from the crowd with striking design and turbocharged capability.



Terrain AT4 is confidently capable and ready to get you into the heart of the action.

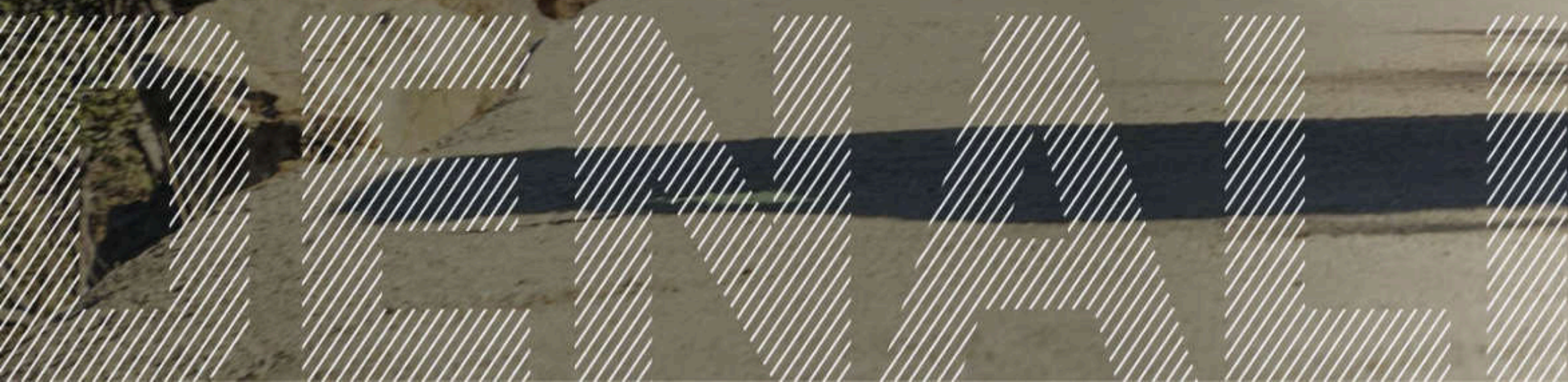


Terrain Denali is premium in every way. It is the embodiment of Terrain's true potential.



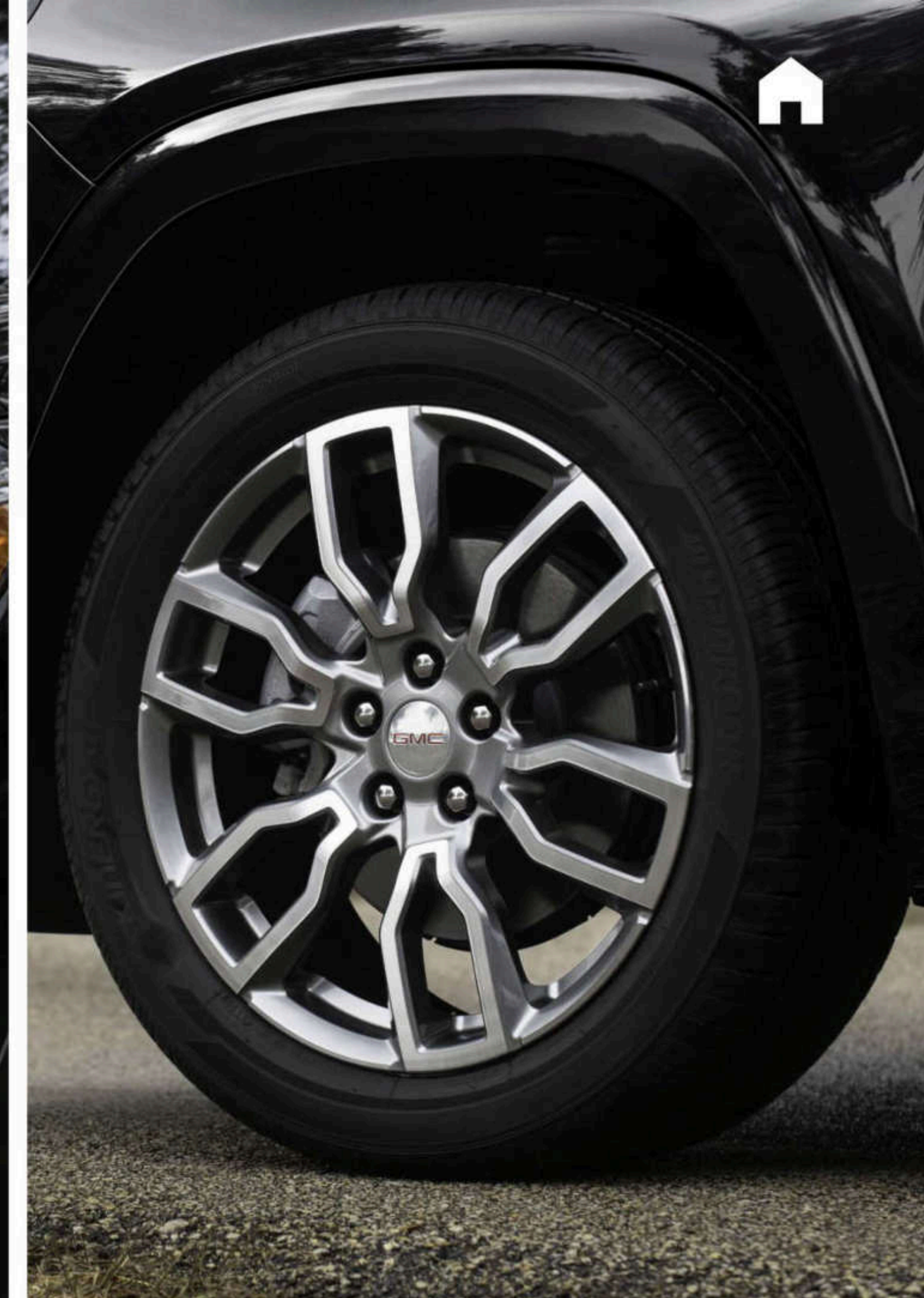
TERRAIN DENALI: THE NEXT LEVEL OF PREMIUM AND CAPABLE

Signature Denali style and performance take Terrain to the next level, exceeding even the highest expectations.



NOW YOU'VE TRULY ARRIVED

- Denali-Exclusive Multidimensional Grille
- LED Headlamps With GMC Signature C-Shape Design
- 19" Machined Aluminum Wheels With Premium Gray Painted Accents
- Ultra-Bright Roof Rails
- Chrome Accents



DENALI



THE TECH YOU NEED

Get the most from every drive with features such as:

- GMC Pro Safety Plus¹
- Front Park Assist²
- Head-Up Display
- 8" Diagonal Driver Information Center
- Wireless Charging³





GMC PRO SAFETY PLUS

INCLUDES ALL GMC PRO SAFETY¹ FEATURES PLUS:

- Lane Change Alert With Side Blind Zone Alert
- Rear Cross Traffic Alert
- Rear Park Assist

GMC Pro Safety Plus is standard on Denali.

Safety or driver-assistance features are no substitute for the driver's responsibility to operate the vehicle in a safe manner. The driver should remain attentive to traffic, surroundings and road conditions at all times. Visibility, weather and road conditions may affect feature performance. Read the vehicle Owner's Manual for more important feature limitations and information.

Discover more of Terrain's safety technologies
at gmc.com/terrain/safety.





DENALI

Terrain's Denali-exclusive interior is crafted with meticulous attention to detail and quality materials for a stylishly luxurious driving experience.



SETTLE IN, BUT NEVER SETTLE



DENALI

TERRAIN DENALI FEATURES:

- Heated Steering Wheel
- Heated Front Seats
- Authentic Aluminum Trim
- Soft-Touch Instrument Panel
- Bose® Premium Seven-Speaker Audio System
- Ventilated Leather-Appointed Front Seats Are Available
- Heated Second-Row Outboard Seats Are Available



GO WHERE THE ACTION IS IN TERRAIN AT4



AT4

Take on the day in the rugged and ready, boldly styled Terrain AT4.



GO BEYOND

Take it on with capability features such as:

- Goodyear® Sport Terrain Tires
- Front Steel Skid Plate
- Traction Select System With Off-Road Mode
- Hill Descent Control



INTUITIVE TECHNOLOGY

Stay connected and informed thanks to these technology features:

- Wireless Apple CarPlay® [Compatibility](#)¹
- Wireless Android Auto™ [Compatibility](#)²
- Amazon Alexa [Built-in](#)³ Is Available
- Head-Up Display Is Available
- High Definition Surround [Vision](#)⁴ Is Available





Stand out anywhere the action takes you with distinctive design features such as:

- AT4 Grille and Badging
- LED Headlamps and Taillamps
- AT4-Embroidered Front Head Restraints
- Heated Steering Wheel
- Heated Front Seats
- Unique 17" Gloss-Black Painted Aluminum Wheels
- Leather-Appointed Front-Row Seats With Unique Accents
- Leather-Appointed Second-Row Outboard Seats



TERRAIN SLE AND SLT

Capability, premium appointments and eye-catching good looks come together in perfect harmony.



REIMAGINE WHAT A COMPACT SUV HAS TO OFFER

Next-level driver comfort and available tech elevate your driving experience.

TERRAIN SLE AND SLT

- GMC Pro Safety¹
- Traction Select System
- Fold-Flat Seats
- Wireless Apple CarPlay® Compatibility²
- Wireless Android Auto Compatibility³
- Terrain Pro Safety Plus⁴ Is Available
- Heated Front Seats and Heated Steering Wheel Are Available
- High Definition Rear Vision Camera⁵ Is Available





TERRAIN ELEVATION EDITION

Terrain Elevation Edition's dynamic presence announces that something truly unique has arrived.



STRIKING DETAILS

ELEVATION EDITION AVAILABLE ON TERRAIN SLE AND TERRAIN SLT

- 19" Gloss-Black Painted Aluminum Wheels
- Darkened Front Grille
- Black Roof Side Rails
- Black GMC Center Caps With Red GMC Lettering
- Black Exterior Accents
- Black Mirror Caps and Black Exterior Badging





GET THERE WITH CONFIDENCE

Travel with confidence thanks to Terrain's available advanced safety and driver-assistance features.





GMC PRO SAFETY

HELP ENHANCE YOUR AWARENESS WITH SAFETY AND DRIVER-ASSISTANCE TECHNOLOGIES:

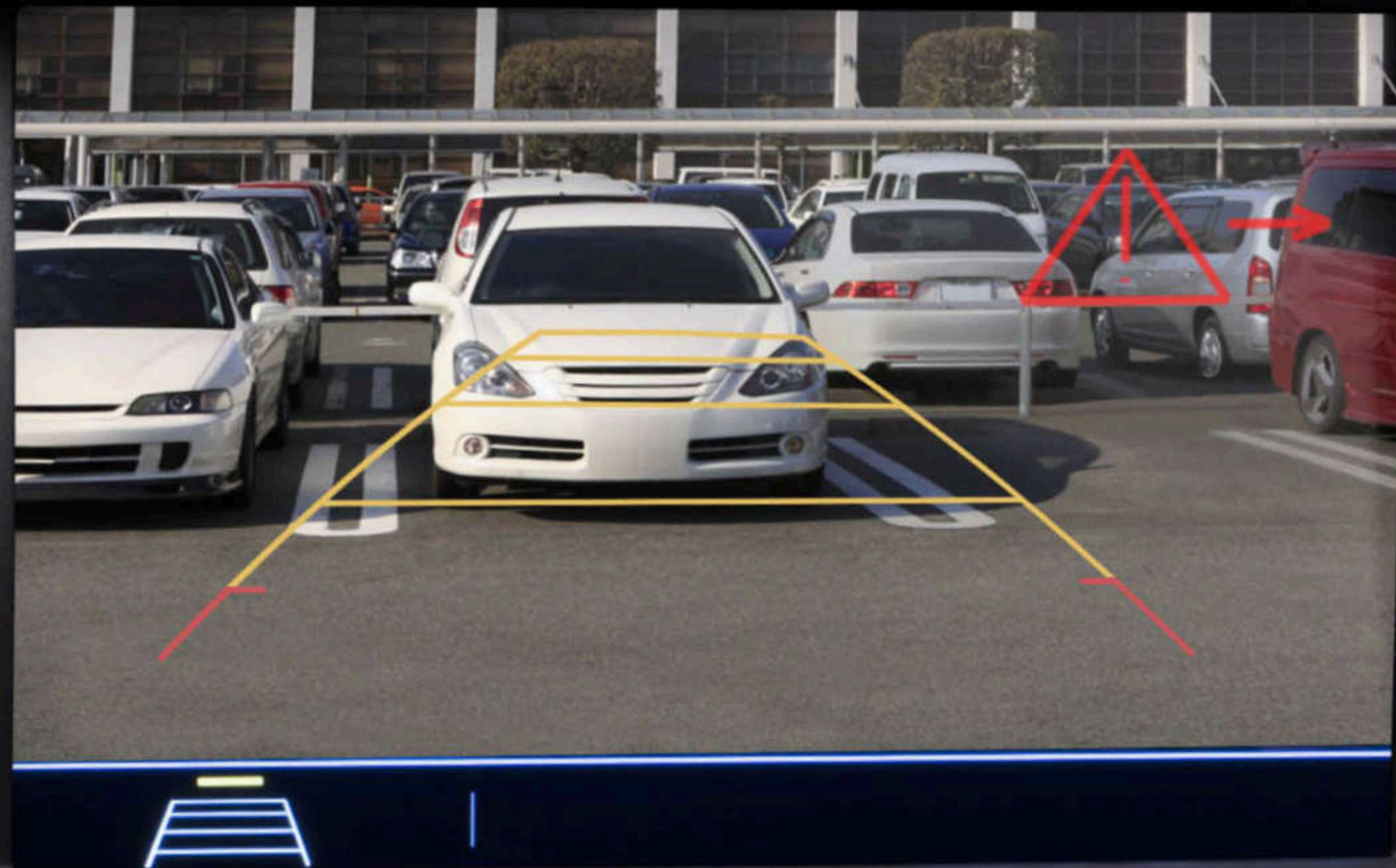
- Automatic Emergency Braking
- Forward Collision Alert
- Lane Keep Assist With Lane Departure Warning
- Following Distance Indicator
- Front Pedestrian Braking
- IntelliBeam—Auto High Beams

Safety or driver-assistance features are no substitute for the driver's responsibility to operate the vehicle in a safe manner. The driver should remain attentive to traffic, surroundings and road conditions at all times. Visibility, weather and road conditions may affect feature performance. Read the vehicle Owner's Manual for more important feature limitations and information.

Discover more of Terrain's safety technologies at gmc.com/terrain/safety.



MORE TERRAIN SAFETY TECHNOLOGY



TERRAIN PRO SAFETY PLUS INCLUDES ALL STANDARD GMC PRO SAFETY FEATURES PLUS:

- Adaptive Cruise Control
- Safety Alert Seat
- Rear Park Assist

Available on SLE, SLT and AT4.

TERRAIN MODELS WITH TERRAIN PRO SAFETY PLUS CAN ALSO OPT FOR THIS PACKAGE:

- Lane Change Alert With Side Blind Zone Alert
- Rear Cross Traffic Alert

Available on SLE, SLT and AT4.

Safety or driver-assistance features are no substitute for the driver's responsibility to operate the vehicle in a safe manner. The driver should remain attentive to traffic, surroundings and road conditions at all times. Visibility, weather and road conditions may affect feature performance. Read the vehicle Owner's Manual for more important feature limitations and information.

Discover more of Terrain's safety technologies at gmc.com/terrain/safety.





STAY CONNECTED WITH WHERE YOU'RE HEADED NEXT

Terrain keeps you and your companions connected, informed and entertained.

- Bluetooth^{®1} Connectivity
- Head-Up Display Is Available
- Amazon Alexa Built-in² Is Available

- Connected Navigation³ With Real-Time Updates on Traffic, Road Closures and Points of Interest Is Available
- Wi-Fi[®] Hotspot⁴ Is Available
- Up to Six USB Ports⁵ Are Available



MAKE EVERY ROAD A ROAD WELL-TRAVELED

TERRAIN OFFERS:

- Smooth-Shifting 9-Speed Automatic Transmission
- Traction Select System Allows You to Make Real-Time Adjustments for Optimal Capability as Driving Conditions Change
- Snow Mode, Included on FWD Models, Lessens the Chance of Wheel Slippage in Low-Traction Driving Conditions
- Off-Road Mode Adjusts the AWD System, Traction Control and Stability Control to Improve Traction and Driving Dynamics on Dirt, Gravel or Sand
- FWD Mode Optimizes Fuel Economy¹ in Everyday Driving Conditions
- Terrain Denali Features a Premium Suspension With Enhanced Shock Control to Help Provide a Refined Ride on Rough Roads





HIGHLY CAPABLE

1.5L TURBO

— 175 hp/203 lb-ft of Torque

HILL DESCENT CONTROL

— Helps Provide a Smooth, Controlled Descent Over Uneven Surfaces

TRACTION SELECT SYSTEM

— With up to Three Modes to Help Master the Conditions



ROOM FOR YOUR LIFE

Terrain offers an available hands-free programmable power liftgate with LED logo projection.





ALL DOWN



SECOND ROW DOWN



BACK-LEFT SEAT DOWN

Terrain comfortably accommodates up to five people and easily allows you to maximize cargo space.

- Fold-Flat Front-Passenger Seat
- 60/40 Split-Folding Second-Row Seats

- Fold-Flat Seats Accommodate Objects up to 8 Feet Long¹



KEEP YOUR CONNECTIONS STRONG

Three years of the OnStar® and Connected Services Premium Plan¹ are included on select Terrain models. With this plan, eligible vehicles² can enjoy the added peace of mind of the OnStar Safety & Security Plan³ and the complete suite of available connectivity features included in the Connected Vehicle Plan.⁴

ONSTAR AND CONNECTED SERVICES PREMIUM PLAN INCLUDES:

- In-Vehicle App⁵ Access
- In-Vehicle Wi-Fi® Hotspot Data⁶
- OnStar Guardian™ app⁷
- myGMC Mobile App⁸
- Automatic Crash Response⁹
- Emergency Services
- Crisis Assist
- Roadside Assistance¹⁰
- Stolen Vehicle Assistance¹¹
- Alexa Built-in¹²



HELP WHEN YOU NEED IT

With 3 years¹ of OnStar Safety and Security, you'll have added peace of mind knowing an Emergency-Certified Advisor² is ready to help. Whether it's a crash, a vehicle theft or an emergency situation, help is available 24/7.

The Safety & Security Plan³ includes the OnStar Guardian app,⁴ which lets you access the key OnStar safety services you depend on right from your phone. Help in a crash, assistance with a flat tire and more are available through your smartphone. Best of all, you can share OnStar Guardian with up to seven of your loved ones at no additional cost.



STAY IN COMMAND WHEREVER THE ACTION LEADS

- Wireless Apple CarPlay® Compatibility¹
- Wireless Android Auto Compatibility²
- GMC Infotainment System³ With Navigation⁴ Is Available
- Bose Premium Seven-Speaker Audio System Is Available
- Wireless Charging⁵ Is Available





EXPLORE MORE, ALEXA'S ON BOARD

Alexa functionality is integrated into your GMC Infotainment System.¹ With available Amazon Alexa Built-in,² you can ask Alexa to stream your favorite music services such as Spotify^{®3} or Amazon Music, get directions, make calls, change your radio station and get routes to the nearest dealership—on the go. Alexa can also make shopping lists, play and resume audiobooks and get the score to last night's game.



FIND YOUR TRUE COLORS

Click the swatches to explore the available vehicle colors.



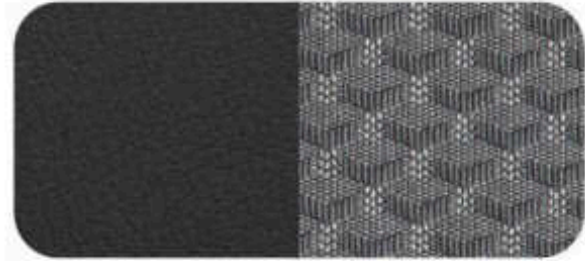
SUMMIT WHITE

Color available on SLE,
SLT, Elevation Edition,
AT4 and Denali.

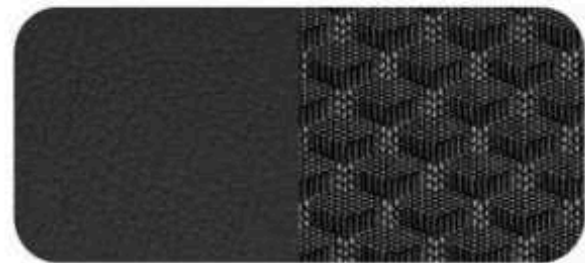




SLE



JET BLACK/MEDIUM
ASH GRAY CLOTH



JET BLACK/
JET BLACK CLOTH

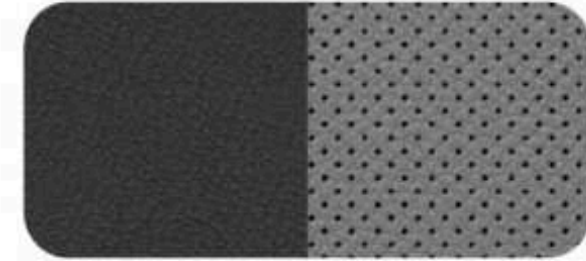


LUXURY BROWN
WOOD TONE



AXIOM ALUMINUM

SLT



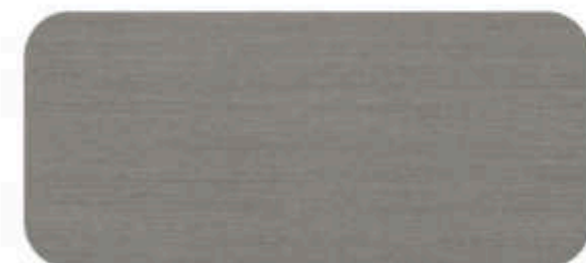
JET BLACK/MEDIUM
ASH GRAY PERFORATED
LEATHER-APPOINTED



JET BLACK/
JET BLACK PERFORATED
LEATHER-APPOINTED



LUXURY BROWN
WOOD TONE

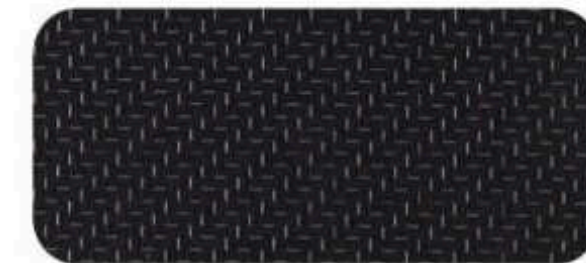


AXIOM ALUMINUM

AT4



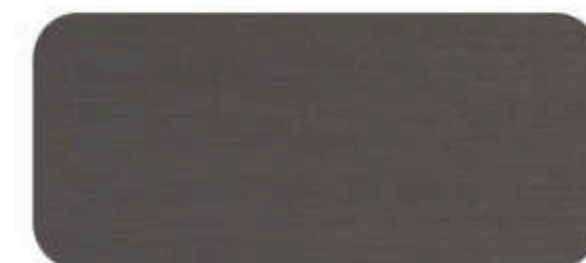
JET BLACK/JET BLACK
PERFORATED LEATHER-APPOINTED



AXINITE APPLIQUÉ

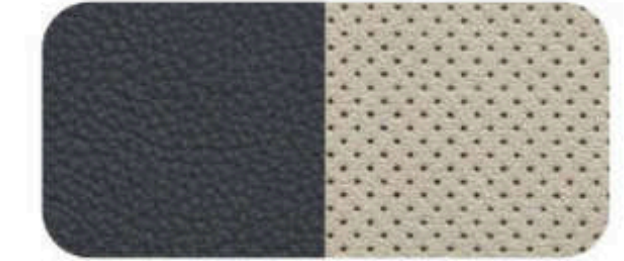


COMBAT ALUMINUM



DARK ALUMINUM

DENALI



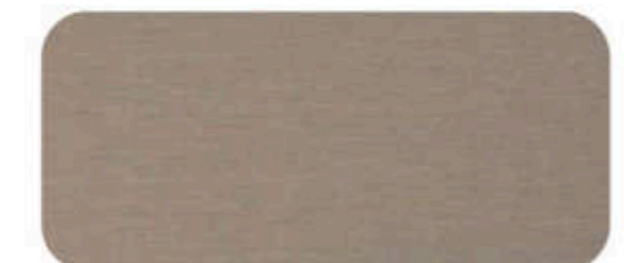
DARK GALVANIZED/
LIGHT PLATINUM PERFORATED
LEATHER-APPOINTED



JET BLACK/
JET BLACK PERFORATED
LEATHER-APPOINTED



SKYLINE TIMBER
WOOD TONE



BURNISHED ALUMINUM



PRECISION-CRAFTED FROM THE GROUND UP



17"

17" SILVER PAINTED ALUMINUM (RSB)
Standard on SLE



17"

17" GLOSS-BLACK PAINTED ALUMINUM (PJE)
Standard on AT4



18"

18" SILVER PAINTED ALUMINUM (RSX)
Standard on SLT



19"

19" GLOSS-BLACK PAINTED ALUMINUM (PJI) Standard on Elevation Edition



19"

19" MACHINED ALUMINUM WITH GRAY PAINTED ACCENTS (PJH)
Available on SLT



19"

19" MACHINED ALUMINUM WITH PREMIUM GRAY PAINTED ACCENTS (RT7)
Standard on Denali



19"

19" PAINTED ALUMINUM WITH AFTER MIDNIGHT FINISH (PJO)
Standard on Black Diamond Edition



PERSONALIZE YOUR TERRAIN—INSIDE AND OUT

GMC Accessories are a great way to personalize your Terrain—inside and out. They're designed and engineered to meet the Professional Grade standards of your Terrain, as well as your own.

We also offer accessories from a lineup of other renowned and proven manufacturers.

Find a full selection of Terrain accessories at gmc.com/accessories.





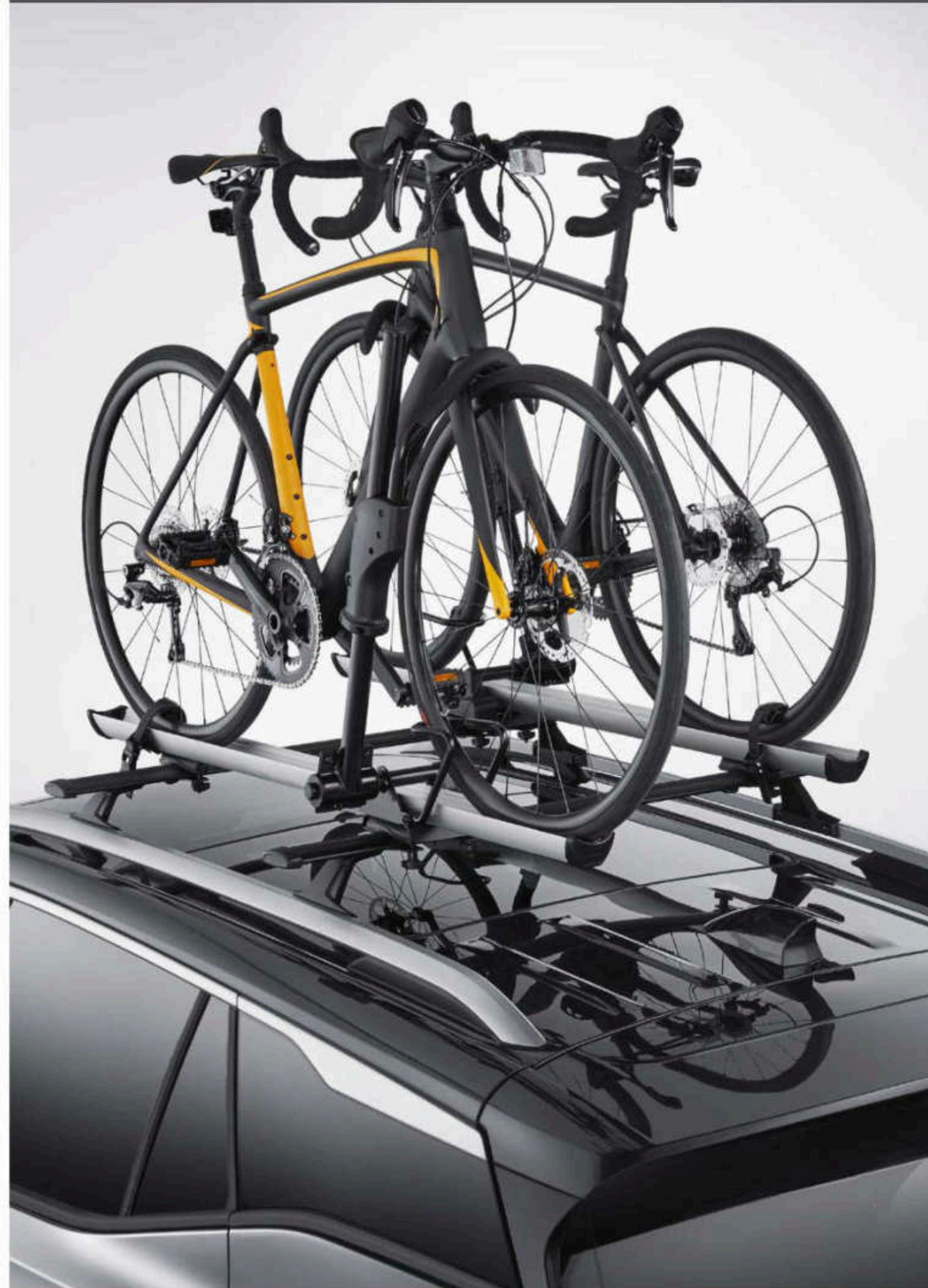
VERTICAL CARGO NET WITH STORAGE BAG



FIRST-ROW PREMIUM ALL-WEATHER FLOOR LINERS



ROOF RACK CROSSRAILS WITH THULE® BIKE CARRIER



INTEGRATED CARGO AREA LINER



Find a full selection of Terrain accessories at gmc.com/accessories.



POWERED BY PROFESSIONAL GRADE



SIERRA 1500



CANYON



SIERRA HEAVY DUTY



HUMMER EV PICKUP



YUKON



TERRAIN



ACADIA

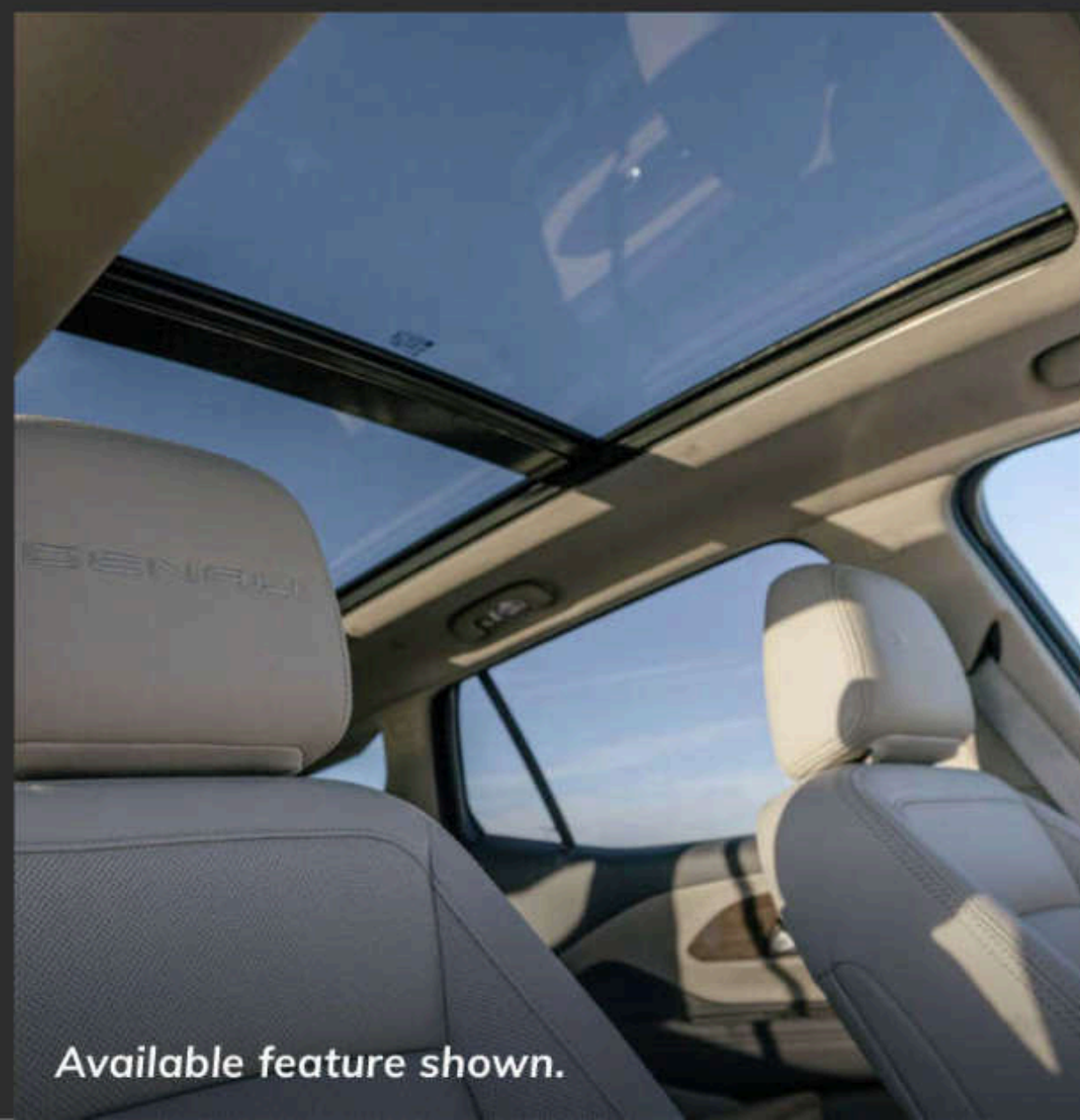
Due to current supply-chain shortages, certain features shown have limited or late availability, or are no longer available. See the window label or a dealer regarding the features on an individual vehicle. Sierra 1500 AT4X shown with available accessories. Canyon AT4X shown available spring 2023. Reservations for HUMMER EV are currently full.

DRIVE THE CONVERSATION

#GMCTERRAIN | #DENALI | #AT4



Share your GMC experience and get in on the action.





IMPORTANT WORDS AND LEGAL DISCLOSURES

**NEW VEHICLE LIMITED WARRANTY**

3-YEAR/36,000-MILE BUMPER-TO-BUMPER LIMITED WARRANTY GMC will warrant each 2023 Terrain from bumper to bumper for 3 years/36,000 miles (whichever comes first; see dealer for details), with no deductible, from the original in-service date of the vehicle, for warrantable repairs that are required as a result of defects due to materials and/or workmanship. Cosmetic corrosion resulting from defects is also covered under the Bumper-to-Bumper Limited Warranty. In addition, rust-through corrosion will be covered for 6 years/100,000 miles (whichever comes first; see dealer for details).

POWERTRAIN LIMITED WARRANTY Every 2023 GMC Terrain comes with a 5-year/60,000-mile (whichever comes first) transferable Powertrain Limited Warranty. 24/7 Roadside Assistance and Courtesy Transportation are also offered for the duration of the Powertrain Limited Warranty. Please see your GMC dealer for details.

ONSTAR AND GMC CONNECTED SERVICES

Connected vehicle services vary by vehicle model and require working electrical system, cell reception and GPS signal. Requires active service plan. OnStar links to emergency services. See onstar.com for details and limitations.

GMC CERTIFIED SERVICE

To help your Terrain live up to its performance promise, GMC Certified Service—found exclusively at your GMC dealer—is there. With all the engineering excellence in Terrain, GM-trained technicians have the expertise to help care for it.

ADDITIONAL NOTES

A NOTE ON CHILD SAFETY Always use seat belts and the correct child restraint for your child's age and size, even with airbags. Even in vehicles equipped with the Passenger Sensing System, children are safer when properly secured in a rear seat in the appropriate infant, child or booster seat. Never place a rear-facing infant restraint in the front seat of any vehicle equipped with an active frontal airbag. See the Owner's Manual and the child safety seat instructions for more safety information.

TRAILERING AND OFF-ROAD DRIVING INFORMATION Please go to gmc.com and carefully review the vehicle Owner's Manual for important safety information about trailering or off-road driving in your vehicle.

FLEET ORDERS Some standard content may be deleted on fleet orders. See dealer for details.

ENGINES GMC products are equipped with engines produced by GM Powertrain or other suppliers to GM worldwide. The engines in GMC products may also be used in other GM makes and models.

GMC.COM See more of Terrain on our website: gmc.com/terrain. More photos and information; hot links to related subjects; convenient dealer locator; pricing guide; spec out your own vehicle. Or call 1-800-GMC-8782.

IMPORTANT WORDS ABOUT THIS CATALOG We have tried to make this catalog comprehensive and factual. We reserve the right, however, to make changes at any time, without notice, in prices, colors, materials, equipment, specifications, models and availability. Specifications, dimensions, measurements, ratings and other numbers in this catalog and other printed materials provided at the dealership or affixed to vehicles are approximations based on design and engineering drawings, prototypes and laboratory tests. Your vehicle may differ due to variations in manufacture and equipment. Since some information may have been updated since the time of publication, please check with your GMC dealer for complete details. GMC reserves the right to lengthen or shorten the model year for any product for any reason or to start and end model years at different times. Certain vehicle features may lose their usefulness over time due to obsolescence from technological changes. Unless otherwise noted, all claims based on GM Compact SUV segment and latest available competitive information available at time of publication. Excludes other GM vehicles.

AN IMPORTANT NOTE ABOUT ALTERATIONS AND WARRANTIES Installations or alterations to the original equipment vehicle (or chassis) as distributed by General Motors are not covered by the General Motors New Vehicle Limited Warranty. The special body company, assembler, equipment installer or upfitter is solely responsible for warranties on the body or equipment and any alterations (or any effect of the alterations) to any of the parts, components, systems or assemblies installed by GM. General Motors is not responsible for the safety or quality of design, features, materials or workmanship of any alterations by such employers.

ASSEMBLY GMC vehicles and their components are assembled or produced by different operating units of General Motors, its subsidiaries or suppliers to GM worldwide. We sometimes find it necessary to produce GMC vehicles with different or differently sourced components than originally scheduled. Since some options may be unavailable when your vehicle is assembled, we suggest you verify that your vehicle includes the equipment you ordered and that, if there were changes, they are acceptable to you.

GMMOBILITY.COM (1-800-323-9935) GM Mobility offers financial assistance for eligible adaptive equipment to make automotive travel easier for persons with disabilities or special transportation needs. To learn more about special GM Mobility offers, visit gmmobility.com.

©2022 General Motors. All rights reserved. GM, the GM logo, GMC, the slogans, emblems, vehicle model names, vehicle body designs and other marks appearing in this catalog are the trademarks and/or service marks of General Motors, its subsidiaries, affiliates or licensors. Facebook is a registered trademark of Meta Platforms, Inc. Twitter is a registered trademark of Twitter, Inc. Instagram is a registered trademark of Instagram, LLC. Sirius, XM and all related marks and logos are trademarks of SiriusXM Radio, Inc. Google, Android, YouTube, Android Auto and other marks are trademarks of Google LLC. Apple, CarPlay, iPhone and Siri are registered trademarks of Apple, Inc.