

# CR-V

2015







# THE NEXT EVOLUTION OF UNBRIDLED FUN.

For years, the CR-V has been one of the best-selling SUVs in the country. But we see no reason to rest on our laurels. With a redesigned exterior, a slew of all-new features and an even more efficient engine, the 2015 CR-V is better than ever.

CR-V Touring shown in Alabaster Silver Metallic.

# THE MOST EFFICIENT CR-V YET.

An engine upgrade and the latest technology from Honda come together for excellent fuel economy ratings.<sup>1</sup> Appeal to your practical side without sacrificing a single bit of fun.

185-HP,\* 2.4-LITER, EARTH DREAMS™ DOHC i-VTEC® ENGINE

An upgraded engine brings an increase in both torque and fuel efficiency. Maximum horsepower and peak torque are now reached at a lower rpm, and direct-injection technology gives you a more efficient use of fuel.<sup>1</sup>

\*SAE net.

34  
MPG  
HIGHWAY RATING<sup>1</sup>

G-DESIGN SHIFT

G-Design Shift optimizes the continuously variable transmission (CVT) to distribute smoother, linear power to the wheels. The result is less unnecessary revving and more responsive acceleration.

ENHANCED SUSPENSION

The 2015 CR-V has been tuned to provide further stability and better handling. Enjoy a sportier driving experience, thanks to improved suspension settings, wider wheels and an upgraded steering rack.

CR-V 2WD Touring shown in Modern Steel Metallic.





# TOUCH AND GO.

The CR-V is equipped with the new 7-inch Display Audio, a touch-screen interface with smartphone-like functionality (EX and above). Tap, pinch and swipe to access the numerous features, and pair with your compatible smartphone to answer calls or hear text messages with *Bluetooth*<sup>®2</sup> HandsFreeLink<sup>®</sup> and SMS text message function.<sup>3</sup> Pair your iPhone<sup>®</sup> 5s, 5c or 5 to utilize Siri<sup>®</sup> Eyes Free and access your phone through the audio interface.\*

CR-V 2WD Touring shown with Beige Leather.

\*Drive responsibly. Some state laws prohibit the operation of handheld electronic devices while operating a vehicle. For safety reasons, always launch your audio application or perform any other operation on your phone or audio device only when the vehicle is safely parked.



#### HondaLink™<sup>4</sup> NEXT GENERATION

Link your compatible smartphone with HondaLink Next Generation to transform your vehicle into a seamless digital hub loaded with music, podcasts, vehicle services and more.\* (EX and above)

#### Aha™<sup>5</sup>

Aha turns your favorite Internet content into personalized, live, on-demand radio stations. Listen to just about anything you want through the audio interface.

#### Honda HD DIGITAL TRAFFIC

Beat gridlock with alternate routes from Honda HD Digital Traffic. You'll get up-to-date traffic information on freeways and surface streets alike. (Navigation-equipped models)

#### STEERING WHEEL-MOUNTED CONTROLS

Whether you need to change the song, make a call or find directions on the available navigation system, you can access the controls right on your steering wheel.\*

#### HD RADIO™<sup>6</sup>

Enjoy crystal-clear sound quality, additional digital-only local channels and song information displayed on the audio screen. Tap the screen to tag for later purchase and download in iTunes®. (Navigation-equipped models)

#### Honda SATELLITE-LINKED NAVIGATION SYSTEM™<sup>7</sup>

The navigation system features built-in voice recognition to help you reach your destination hands-free. (available on EX-L, standard on Touring)

\*Drive responsibly. Some state laws prohibit the operation of handheld electronic devices while operating a vehicle. For safety reasons, always launch your audio application or perform any other operation on your phone or audio device only when the vehicle is safely parked.



Every CR-V has been refined inside and out. Lean back in the available leather-trimmed seats, and let in a little light through the power moonroof with one-touch control (EX and above). All this luxury, and you'll still enjoy room for five, 60/40 split rear seats and plenty of cargo space.<sup>8</sup>

CR-V 2WD Touring shown with Beige Leather.



#### LED DAYTIME RUNNING LIGHTS (DRL)

These sleek lights add a stylistic touch and improve your visibility to other vehicles. (EX and above)



#### DUAL-ZONE AUTOMATIC CLIMATE CONTROL

This system keeps everyone comfortable by allowing both the driver and front passenger to set different temperature levels. (EX-L, Touring)



#### SMART ENTRY

Hop in the CR-V without ever taking your keys out of your pocket. Smart Entry recognizes when your key is near the vehicle, and locks or unlocks the doors. (EX and above)



#### MULTI-FUNCTIONAL CENTER CONSOLE

The redesigned center console efficiently organizes your daily carry-alongs. EX and above models feature two power outlets and two USB ports.



#### HEATED FRONT SEATS

Seats with built-in heaters and hi/lo settings are featured on EX and above models.

iPhone and cables are not included.



Honda reminds you to properly secure items in the cargo area.

CR-V AWD Touring shown in Urban Titanium Metallic.

#### 18-INCH ALLOY WHEELS

The sporty, redesigned exterior is punctuated by shiny 18-inch alloy wheels. (Touring)

#### DRIVER'S SEAT WITH TWO-POSITION MEMORY

Your two keys can remember each owner's preferred seat settings. Once set, the seat will automatically adjust as you enter the CR-V. (Touring)

#### PUSH BUTTON START


The CR-V can identify when your key is inside the vehicle, so all you need to do is press the button. (EX and above)

#### SIDE MIRRORS WITH INTEGRATED TURN INDICATORS

Turn indicators on the side mirrors improve your visibility in high traffic areas. (Touring)

#### POWER TAILGATE

Buttons located on your key, inside the driver's area and on the tailgate can all be pressed to raise and lower the tailgate. No muscle required. (Touring)



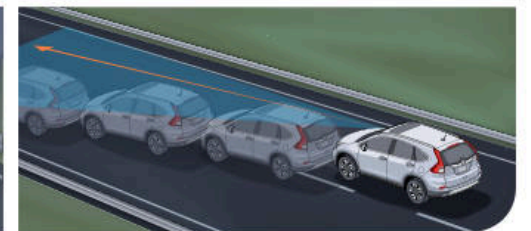
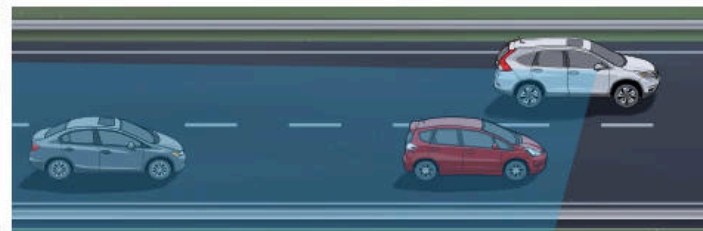
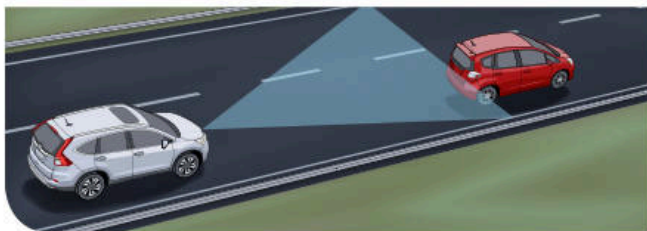
WHETHER  
COMING  
OR GOING,  
THE CR-V  
ALWAYS  
MAKES A  
STATEMENT.

CR-V 2WD Touring shown in Alabaster Silver Metallic.

# Honda Sensing.™

The CR-V Touring is the first vehicle to receive Honda Sensing technologies. This suite of driver-assistive features helps improve the driver's situational awareness, and in some cases intervenes to help avoid a collision or mitigate its severity.

CR-V AWD Touring shown in Basque Red Pearl II.



## COLLISION MITIGATION BRAKING SYSTEM™<sup>9</sup>



Meter MID Message

The ingenious CMBS system can sense a vehicle in front of the CR-V, sound a warning, tighten the front seat belts and automatically apply brake pressure to help bring the vehicle to a stop. (Touring)

## LANE KEEPING ASSIST SYSTEM™<sup>10</sup>



Meter MID Message

When you begin to depart a detected lane without a turn signal, alerts will flash and sound and the steering wheel will adjust to correct the unintentional lane drifting. (Touring)

## Honda LANEWATCH™<sup>11</sup>

A tiny camera under the passenger-side mirror activates with your turn signal. A view of the lane with nearly four times more area than the mirror alone appears on your Display Audio screen. (EX and above)

## ADAPTIVE CRUISE CONTROL™<sup>12</sup>



Meter MID Message

Set a desired speed and interval behind the vehicle detected directly in front of you. When the vehicle ahead changes speed, ACC adapts to maintain the set interval. (Touring)

## LANE DEPARTURE WARNING™<sup>13</sup>



Meter MID Message

Alerts sound and flash when an unindicated lane departure is detected by the small camera behind the rearview mirror. (Touring)

Airbags inflated for display purposes only.

# SAFETY FEATURES COME STANDARD.

Our engineers design systems that not only help protect you, but also help you avoid collisions altogether. Honda brings you these advanced safety features on every 2015 CR-V.

CR-V 2WD Touring shown with Beige Leather.

## ACTIVE SAFETY

### VEHICLE STABILITY ASSIST™ (VSA\*)

During oversteer or understeer, VSA\* can brake individual wheels and/or reduce engine power to help restore your intended course.

\*VSA is not a substitute for safe driving. It cannot correct the vehicle's course in every situation or compensate for reckless driving. Control of the vehicle always remains with the driver.

### ANTI-LOCK BRAKING SYSTEM (ABS)

ABS pulses the brakes to help prevent wheel lockup and retain steering control during hard braking.

### ELECTRONIC BRAKE DISTRIBUTION (EBD)

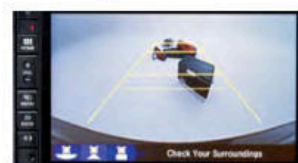
Helps balance braking forces, depending on how much load each wheel is bearing.

### BRAKE ASSIST

Helps apply full braking force in some emergency situations.

### REARVIEW CAMERA<sup>14</sup>

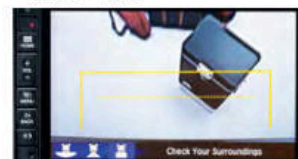
All CR-V models come with a multi-angle rearview camera to help see more of what's behind you when you're in reverse.



Normal View



Wide View



Top View

### TIRE PRESSURE MONITORING SYSTEM (TPMS)<sup>15</sup>

Pressure is monitored in all four tires, and the driver is alerted when air pressure in any tire becomes significantly low.

## PASSIVE SAFETY

### ADVANCED COMPATIBILITY ENGINEERING™ (ACE™) BODY STRUCTURE

This Honda-exclusive design enhances occupant protection and crash compatibility in frontal collisions. By dispersing crash energy more evenly throughout the front of the vehicle, less force is transmitted to the passenger compartment.

### DUAL-STAGE FRONT AIRBAGS (SRS)

Capable of inflating at different rates depending on crash severity, seat-belt usage and/or other factors.<sup>†</sup>

### SMARTVENT® FRONT SIDE AIRBAGS

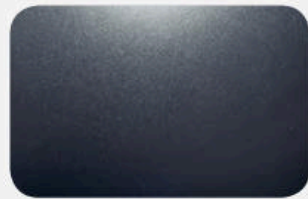
SmartVent front side airbags decrease the likelihood of airbag-related injuries in the event of a moderate-to-severe side impact. They vent before fully inflating if an occupant is in the side airbag deployment path.<sup>†</sup>

### SIDE CURTAIN AIRBAGS WITH ROLLOVER SENSOR

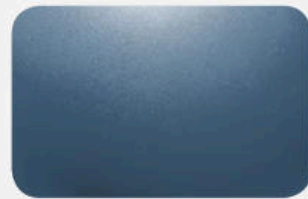
These advanced airbags can reduce the likelihood of injuries in a collision by providing not only side-impact protection, but also protection in the event of a rollover.<sup>†</sup>

<sup>†</sup>Honda reminds you and your passengers to always buckle up. Children 12 and under are safest when properly restrained in the rear seat.

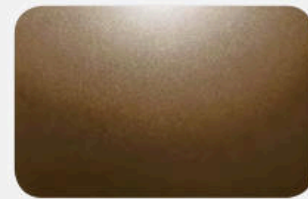
## COLOR



Modern Steel Metallic



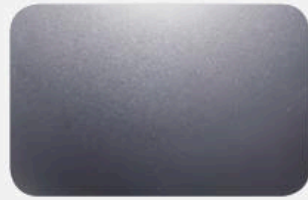
Mountain Air Metallic



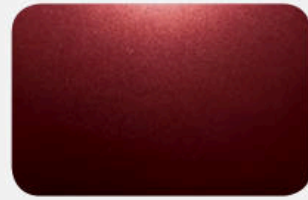
Kona Coffee Metallic



White Diamond Pearl



Alabaster Silver Metallic



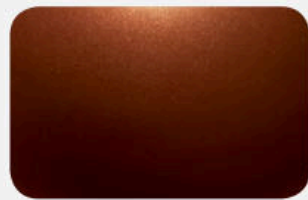
Basque Red Pearl II



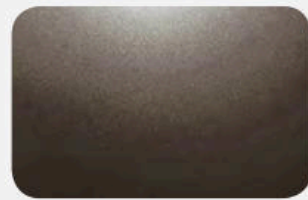
Crystal Black Pearl



Obsidian Blue Pearl

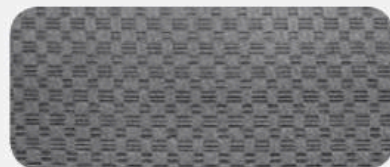


Copper Sunset Pearl

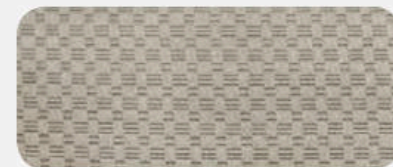


Urban Titanium Metallic

## FABRIC



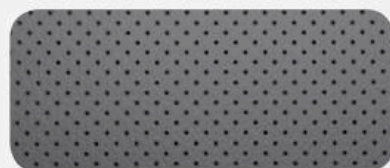
LX / EX Gray Fabric



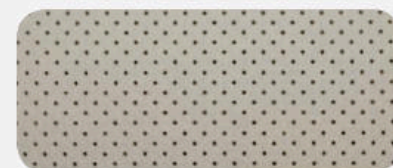
LX / EX Beige Fabric



LX / EX Black Fabric



EX-L / Touring Gray Leather



EX-L / Touring Beige Leather



EX-L / Touring Black Leather

## LX

- 185-hp,<sup>16</sup> 2.4-liter i-VTEC® 4-cylinder engine with direct injection
- Continuously variable transmission (CVT)
- ULEV-2 CARB emissions rating<sup>17</sup>
- EPA mileage ratings<sup>1</sup> (city/highway/combined): 2WD: 27/34/29 mpg; AWD: 26/33/28 mpg
- Eco Assist™ system
- Available Real Time AWD with Intelligent Control System™
- Hill start assist
- Six airbags
- Advanced Compatibility Engineering™ (ACE™) body structure
- Vehicle Stability Assist™ (VSA®) with traction control
- Multi-angle rearview camera with guidelines<sup>14</sup>
- Tire Pressure Monitoring System (TPMS)<sup>15</sup>
- Daytime Running Lights (DRL)
- Remote entry system
- Folding power side mirrors, including Expanded View Driver's Mirror
- Multi-reflector halogen headlights with auto-off
- i-MID with 5-inch LCD screen and customizable feature settings
- Bluetooth®<sup>18</sup> HandsFreeLink®
- Cruise control
- Tilt and telescopic steering column
- Illuminated steering wheel-mounted controls
- Map lights
- Easy fold-down 60/40 split rear seat
- 160-watt AM/FM/CD audio system with 4 speakers
- Pandora®<sup>18</sup> compatibility
- Bluetooth<sup>2</sup> streaming audio
- SMS text message function<sup>3</sup>
- USB Audio Interface<sup>19</sup> (1 port in center console)
- MP3/auxiliary input jack

## EX adds to or replaces LX features

- 17-inch alloy wheels
- LED Daytime Running Lights (DRL)
- Auto-on/off headlights
- One-touch power moonroof with tilt feature
- Security system
- Smart Entry
- Fog lights
- Body-colored side mirrors
- Rear privacy glass
- Honda LaneWatch™<sup>11</sup>
- Push button start
- Retractable cargo area cover
- Driver's seat with 10-way power adjustment, including power lumbar support
- Heated front seats
- 160-watt AM/FM/CD audio system with 6 speakers
- 7-inch Display Audio with high-resolution WVGA (800x480) electrostatic touch-screen and customizable feature settings
- HondaLink™<sup>4</sup> Next Generation
- Display Audio Interface<sup>20</sup>
- USB Audio Interface<sup>19</sup> (2 ports in center console)

## KEY STANDARD FEATURES FOR CR-V

Multi-angle rearview camera<sup>14</sup> with guidelines / SMS text message function<sup>3</sup> / Pandora<sup>18</sup> compatibility / USB Audio Interface<sup>19</sup>

For more information and complete specifications, go to [crv.honda.com](http://crv.honda.com)

## EX-L adds to or replaces EX features

- Roof rails
- Heated side mirrors
- Dual-zone automatic climate control system
- Leather-wrapped steering wheel
- Leather-trimmed interior
- 328-watt AM/FM/CD audio system with 7 speakers, including subwoofer
- SiriusXM® Radio<sup>21</sup>
- Available Honda Satellite-Linked Navigation System™<sup>7</sup> with voice recognition, Honda HD Digital Traffic and HD Radio™<sup>6</sup>

## TOURING adds to or replaces EX-L features

- 18-inch alloy wheels
- Collision Mitigation Braking System™ (CMBS™)<sup>9</sup>
- Lane Departure Warning (LDW)<sup>13</sup>
- Power tailgate
- Projector-beam halogen headlights with auto-on/off
- Side mirrors, including integrated turn indicators
- Lane Keeping Assist System (LKAS)<sup>10</sup>
- Adaptive Cruise Control (ACC)<sup>12</sup>
- HomeLink®<sup>22</sup> remote system
- Driver's seat with two-position memory
- Honda Satellite-Linked Navigation System™<sup>7</sup> with voice recognition, Honda HD Digital Traffic and HD Radio™<sup>6</sup>



[▶ Compare](#)

[▶ Current Offers](#)

[▶ Build & Price](#)

[▶ Locate a Dealer](#)

[▶ Receive Updates](#)

[▶ CR-V Site](#)

Join the millions of other Honda fans and connect with us socially.<sup>23</sup>



cr-v.honda.com

All 2015 Honda vehicles – and any Honda Genuine Accessories installed at the time of vehicle purchase – are covered by a 3-year/36,000-mile limited warranty.<sup>24</sup> Plus, Honda cars and trucks are covered by a 5-year/60,000-mile Limited Powertrain Warranty,<sup>24</sup> too. For more information or assistance, see your Honda dealer or please give us a call at 1-800-33-Honda.

24-hour emergency road service is available to you in the United States, Puerto Rico and Canada throughout your 3-year/36,000-mile limited warranty term, starting with 2015 vehicles. Services include jump-starting, flat tire and lockout assistance, towing, and more (limitations apply). Call 1-866-864-5211.



Whether you buy or lease a Honda vehicle, Honda Financial Services can assist you with the process. Please ask your dealer which lease or purchase plan best suits your needs.



Honda Care<sup>®</sup> is an affordable, comprehensive vehicle and travel protection plan backed by Honda reliability, service and parts. Please see your Honda dealer for details.



Manufactured to the same strict standards as Honda vehicles, Honda Genuine Accessories are the perfect way to personalize and protect your vehicle. Please see your Honda dealer for details.



Powerful. Agile. Versatile enough to handle almost any condition. It's no wonder Honda is the official vehicle of the NHL.<sup>25</sup>

<sup>1</sup> 27 city/34 highway/29 combined mpg rating for 2WD models. <sup>26</sup> city/33 highway/28 combined mpg rating for AWD models. Based on 2015 EPA mileage ratings. Use for comparison purposes only. Your mileage will vary depending on how you drive and maintain your vehicle. <sup>2</sup> The Bluetooth<sup>®</sup> word mark and logos are owned by the Bluetooth SIG, Inc., and any use of such marks by Honda Motor Co., Ltd., is under license. <sup>3</sup> Compatible with select phones with Bluetooth<sup>®</sup>. Your wireless carrier's rate plans apply. State or local laws may limit use of texting feature. Only use texting feature when conditions allow you to do so safely. <sup>4</sup> Depending on use, HondaLink<sup>™</sup> can transmit to Honda and its providers a vehicle's location, speed and other operating conditions, information that may be tied to the vehicle identification number (VIN) and can be combined to create a track of a vehicle. Check the HondaLink<sup>™</sup> website for smartphone compatibility and access to the Display Audio Interface. For a full explanation of HondaLink<sup>™</sup> functionality and Honda's data use and privacy policy, see <http://owners.honda.com/hondalink>. <sup>5</sup> Aha is a trademark of Harman International Industries, Inc. Your wireless carrier's rates may apply. <sup>6</sup> HD Radio is a proprietary trademark of iBiquity Digital Corporation. <sup>7</sup> The Honda Satellite-Linked Navigation System<sup>™</sup> is available on EX-L models and standard on Touring models in the United States, Canada and Puerto Rico. (Honda HD Digital Traffic service only available in the United States, except Alaska.) Please see your Honda dealer for details. <sup>8</sup> Carrying too much cargo or improperly storing it can affect the handling, stability and operation of this vehicle. Follow applicable load limits and loading guidelines. <sup>9</sup> Collision Mitigation Braking System (CMBS) cannot detect all objects ahead and may not detect a given object; accuracy will vary based on weather, speed and other factors. System operation affected by extreme interior heat. System designed to mitigate crash forces. Driver remains responsible for safely operating vehicle and avoiding collisions. <sup>10</sup> Lane Keeping Assist System (LKAS) only alerts drivers when lane drift is detected without a turn signal in use. LKAS may not detect all lane markings or lane departures; accuracy will vary based on weather, speed and road condition. System operation affected by extreme interior heat. Driver remains responsible for safely operating vehicle and avoiding collisions. <sup>11</sup> Display accuracy will vary based on weather, size of object and speed, and the display may not show all relevant traffic. The display is not a substitute for your own direct visual assessment of traffic conditions before changing lanes. <sup>12</sup> Adaptive Cruise Control (ACC) cannot detect all objects ahead and may not detect a given object; accuracy will vary based on weather, speed and other factors. ACC should not be used in heavy traffic, poor weather or on winding roads. The driver remains responsible to slow or stop the vehicle to avoid a collision. <sup>13</sup> Lane Departure Warning (LDW) only alerts drivers when lane drift is detected without a turn signal in use. LDW may not detect all lane markings or lane departures; accuracy will vary based on weather, speed and road condition. System operation affected by extreme interior heat. Driver remains responsible for safely operating vehicle and avoiding collisions. <sup>14</sup> Always visually confirm that it is safe to drive before backing up; the rearview camera display does not provide complete information about all conditions and objects at the rear of your vehicle. <sup>15</sup> For optimal tire wear and performance, tire pressure should be checked regularly with a gauge. Do not rely solely on the monitor system. Please see your Honda dealer for details. <sup>16</sup> 185 hp @ 6400 rpm (SAE net). <sup>17</sup> ULEV-2 (Ultra-Low-Emission Vehicle) models as certified by the California Air Resources Board (CARB). <sup>18</sup> Pandora, the Pandora logo, and the Pandora trade dress are trademarks or registered trademarks of Pandora Media, Inc. Used with permission. Compatible with select smartphones. See: [www.pandora.com/everywhere/mobile](http://www.pandora.com/everywhere/mobile). Not all devices compatible with USB connection. Your wireless carrier's rate plans apply. <sup>19</sup> The USB Audio Interface is used for direct connection to and control of some current digital audio players and other USB devices that contain MP3, WMA or AAC music files. Some USB devices with security software and digital rights-protected files may not work. Please see your Honda dealer for details. <sup>20</sup> The Display Audio Interface is used for direct connection to and streaming from some current smartphones. Some smartphones may not work. Please see your Honda dealer for details. <sup>21</sup> SiriusXM services require a subscription after any trial period. If you decide to continue your SiriusXM service at the end of your trial subscription, the plan you choose will automatically renew and bill at then-current rates until you call SiriusXM at 1-866-635-2349 to cancel. See our Customer Agreement for complete terms at [www.siriusxm.com](http://www.siriusxm.com). Fees and programming subject to change. XM satellite service is available only to those at least 18 years and older in the 48 contiguous United States and D.C. ©2014 Sirius XM Radio Inc. Sirius, XM and all related marks and logos are trademarks of Sirius XM Radio Inc. <sup>22</sup> HomeLink and the HomeLink house are registered trademarks of Johnson Controls.<sup>®</sup> <sup>23</sup> The Twitter bird logo and the V logo are trademarks of Twitter, Inc., or its affiliates. <sup>24</sup> **3-Year/36,000-Mile Limited Warranty. 5-Year/60,000-Mile Limited Powertrain Warranty.** Ordinary maintenance or adjustments, parts subject to normal wear and replacement, and certain items are excluded. Please see your Honda dealer for the terms and conditions of the limited warranties. <sup>25</sup> NHL and the NHL Shield are registered trademarks of the National Hockey League. ©NHL 2014. All Rights Reserved. Apple, the Apple logo, iPhone, iTunes and Siri are trademarks of Apple Inc., registered in the U.S. and other countries. **Always use seat belts and appropriate child seats. Children 12 and under are safest when properly restrained in the rear seat.** Specifications, features, illustrations and equipment shown in this electronic brochure are based upon latest available information at the time of production. Although descriptions are believed to be correct, accuracy cannot be guaranteed. American Honda Motor Co., Inc., reserves the right to make changes at any time, without notice or obligation, in colors, specifications, accessories, materials and models. Some features mentioned herein are not available in all areas. Please see your Honda dealer for details. Some vehicles may be shown with optional equipment. Available = Optional. All images contained herein are either owned by American Honda Motor Co., Inc., or used under a valid license. It is a violation of federal law to reproduce these images without express written permission from American Honda Motor Co., Inc., or the individual copyright owner of such images. Honda Financial Services is a DBA of American Honda Finance Corporation. Honda, the H-mark symbol, Honda Care, Honda LaneWatch, HondaLink, Honda Satellite-Linked Navigation System, Honda Sensing, Advanced Compatibility Engineering, ACE, Real Time AWD with Intelligent Control System, Collision Mitigation Braking System, CMBS, Earth Dreams Technology, Eco Assist, ECON logo, HandsFreeLink, i-VTEC, SmartVent, Vehicle Stability Assist and VSA are trademarks of Honda Motor Co., Ltd. ©2014 American Honda Motor Co., Inc.

## Honda LANEWATCH<sup>6</sup>

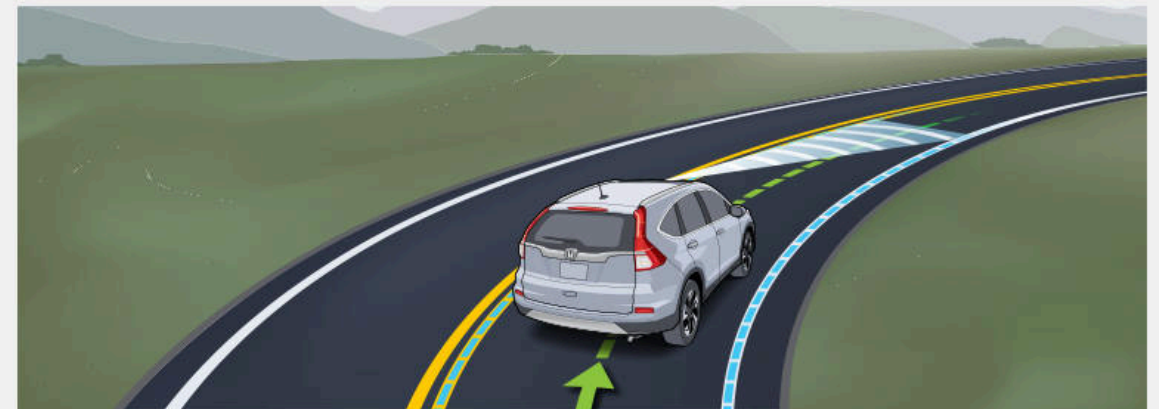
activates with your turn signal and shows a view of the lane with nearly four times more area than the mirror alone on your Display Audio screen.





LANE  
KEEPING  
ASSIST  
SYSTEM<sup>7</sup>  
(TOURING)

**LANE KEEPING ASSIST SYSTEM<sup>7</sup>**  
activates when you begin to depart a lane without a turn signal. Alerts will flash and sound and the steering wheel will adjust to correct the unintentional lane drifting.





## KEY STANDARD FEATURES:

- Multi-angle rearview camera<sup>8</sup>
- Continuously variable transmission (CVT)
- Steering wheel-mounted controls
- *Bluetooth*<sup>®9</sup> HandsFreeLink
- SMS text message function<sup>10</sup>
- Pandora<sup>®11</sup> compatibility
- Auto-off headlights



FIND A  
DEALER



BUILD  
YOUR  
CR-V



JOIN THE MILLIONS OF OTHER Honda  
FANS AND CONNECT WITH US SOCIALLY.<sup>5</sup>



CR-V  
SITE

24-hour emergency road service is available to you in the United States, Puerto Rico and Canada throughout your 3-year/36,000-mile limited warranty term, starting with 2015 vehicles. Services include jump-starting, flat tire and lockout assistance, towing, and more (limitations apply). Call 1-866-864-5211. <sup>1</sup> 27 city/34 highway/29 combined mpg rating for 2WD models. 26 city/33 highway/28 combined mpg rating for AWD models. Based on 2015 EPA mileage ratings. Use for comparison purposes only. Your mileage will vary depending on how you drive and maintain your vehicle. <sup>2</sup> Collision Mitigation Braking System (CMBS) cannot detect all objects ahead and may not detect a given object; accuracy will vary based on weather, speed and other factors. System operation affected by extreme interior heat. System designed to mitigate crash forces. Driver remains responsible for safely operating vehicle and avoiding collisions. <sup>3</sup> Depending on use, HondaLink™ can transmit to Honda and its providers a vehicle's location, speed and other operating conditions, information that may be tied to the vehicle identification number (VIN) and can be combined to create a track of a vehicle. HondaLink™ access within the Display Audio interface is currently only compatible with iPhone® 5 and newer models. For a full explanation of HondaLink™ functionality and Honda's data use and privacy policy, see <http://owners.honda.com/hondalink>. <sup>4</sup> Aha is a trademark of Harman International Industries, Inc. Your wireless carrier's rates may apply. <sup>5</sup> The Honda Satellite-Linked Navigation System™ is available on EX-L models and standard on Touring models in the United States, Canada and Puerto Rico. (Honda HD Digital Traffic service only available in the United States, except Alaska.) Please see your Honda dealer for details. <sup>6</sup> Display accuracy will vary based on weather, size of object and speed, and the display may not show all relevant traffic. The display is not a substitute for your own direct visual assessment of traffic conditions before changing lanes. <sup>7</sup> Lane Keeping Assist System (LKAS) only alerts drivers when lane drift is detected without a turn signal in use. LKAS may not detect all lane markings or lane departures; accuracy will vary based on weather, speed and road condition. System operation affected by extreme interior heat. Driver remains responsible for safely operating vehicle and avoiding collisions. <sup>8</sup> Always visually confirm that it is safe to drive before backing up; the rearview camera display does not provide complete information about all conditions and objects at the rear of your vehicle. <sup>9</sup> The *Bluetooth*® word mark and logos are owned by the Bluetooth SIG, Inc., and any use of such marks by Honda Motor Co., Ltd., is under license. <sup>10</sup> Compatible with select phones with *Bluetooth*®. Your wireless carrier's rate plans apply. State or local laws may limit use of texting feature. Only use texting feature when conditions allow you to do so safely. <sup>11</sup> Pandora, the Pandora logo, and the Pandora trade dress are trademarks or registered trademarks of Pandora Media, Inc. Used with permission. Compatible with select smartphones. See: [www.pandora.com/everywhere/mobile](http://www.pandora.com/everywhere/mobile). Not all devices compatible with USB connection. Your wireless carrier's rate plans apply. <sup>12</sup> The Twitter bird logo and the V logo are trademarks of Twitter, Inc., or its affiliates. iPhone is a trademark of Apple Inc., registered in the U.S. and other countries. **Always use seat belts and appropriate child seats. Children 12 and under are safest when properly restrained in the rear seat.** Specifications, features, illustrations and equipment shown in this electronic brochure are based upon latest available information at the time of production. Although descriptions are believed to be correct, accuracy cannot be guaranteed. American Honda Motor Co., Inc., reserves the right to make changes at any time, without notice or obligation, in colors, specifications, accessories, materials and models. Some features mentioned herein are not available in all areas. Please see your Honda dealer for details. Some vehicles may be shown with optional equipment. Available = Optional. All images contained herein are either owned by American Honda Motor Co., Inc., or used under a valid license. It is a violation of federal law to reproduce these images without express written permission from American Honda Motor Co., Inc., or the individual copyright owner of such images. Honda, the H-mark symbol, Honda LaneWatch, HondaLink, Honda Satellite-Linked Navigation System, Collision Mitigation Braking System, CMBS, Earth Dreams Technology, ECON logo, HandsFreeLink and i-VTEC are trademarks of Honda Motor Co., Ltd. © 2014 American Honda Motor Co., Inc.