

2016

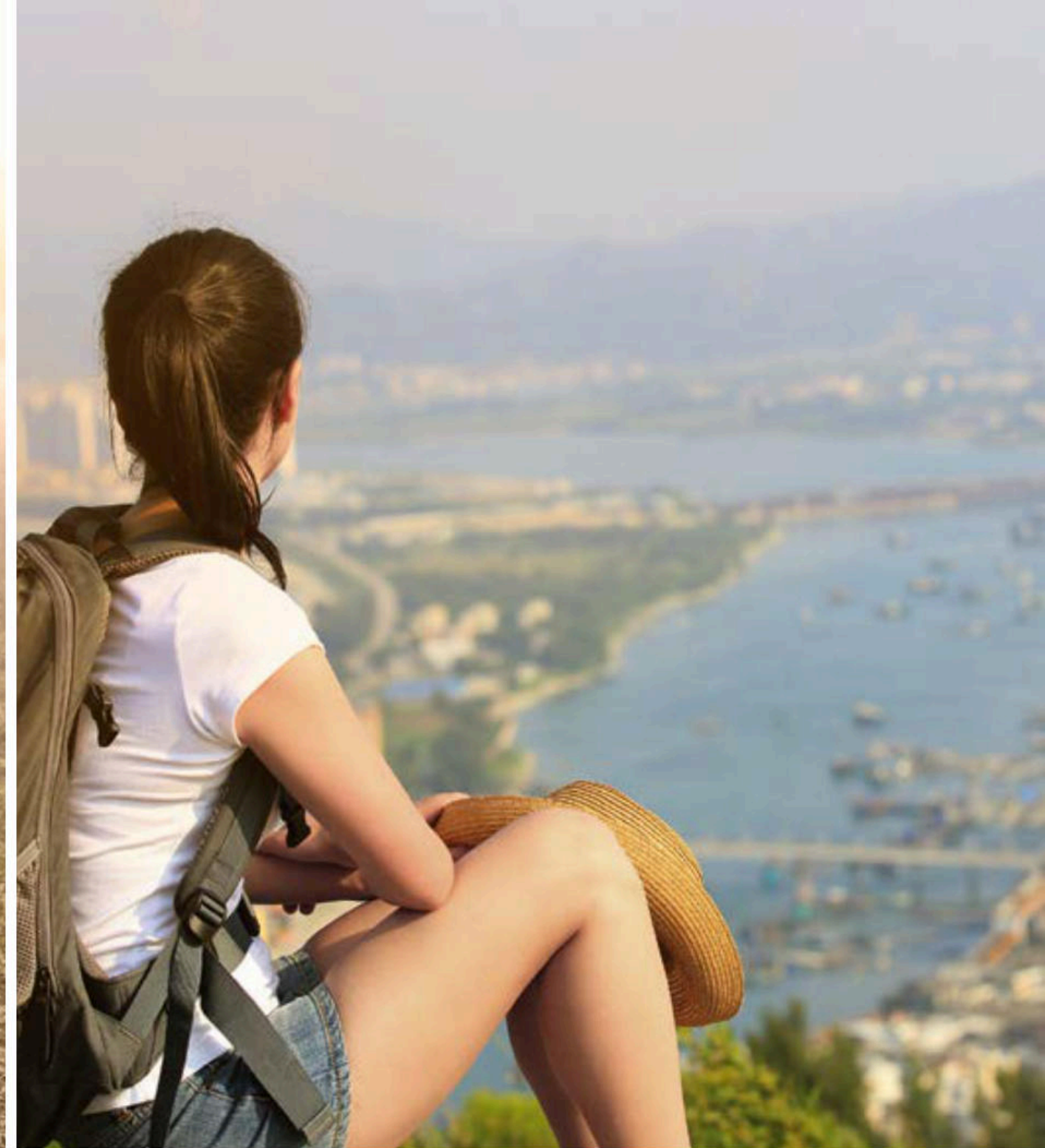
CR-V



Game on, world.



CR-V Touring shown in Modern Steel Metallic.



THE 2016 CR-V

So much to do, so much to see. The CR-V has a 185-hp* EarthDreams® engine and continuously variable transmission (CVT) with G-Design Shift that helps you adapt to any situation.

*SAE net.



STYLE



Life looks good.

CR-V Touring shown in Copper Sunset Pearl.

The night is young, and there's plenty to do. Sleek curves and a spacious interior give the CR-V plenty of style and incredible versatility.



Feels like home.

CR-V Touring shown with Beige Leather.



CR-V Touring shown with Beige Leather.

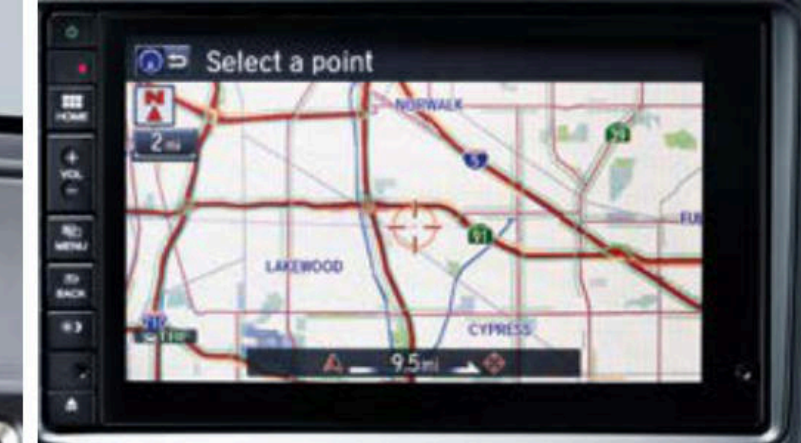
DESIGN

A modern interior welcomes you with comfortable seats, ample legroom and an elegant console interface. Sit back and enjoy the ride in the available leather-trimmed seats (EX-L, Touring).



Smart on the inside.

CR-V Touring shown.



HD DIGITAL TRAFFIC



STEERING WHEEL-MOUNTED CONTROLS



HD RADIO™³

TECHNOLOGY

The CR-V features a whole suite of innovative technology to help navigate and keep you connected.* Equipped with a 7-inch Display Audio (EX and above), you can tap, pinch and swipe to access features like *Bluetooth*^{®1}, *HandsFreeLink*[®] and SMS text message function².

HD DIGITAL TRAFFIC
Beat gridlock with continuously updated traffic information on freeways and surface streets using Honda HD Digital Traffic (Navigation-equipped models).

STEERING WHEEL-MOUNTED CONTROLS
Whether you need to change the song, make a call or find directions on the available navigation system, you can access the controls right on your steering wheel.*

HD RADIO³
Enjoy enhanced sound quality, additional digital-only local channels and song information displayed on the audio screen (Navigation-equipped models).

*Drive responsibly. Some state laws prohibit the operation of handheld electronic devices while operating a vehicle. For safety reasons, always launch your audio application or perform any other operation on your phone or audio device only when the vehicle is safely parked.



LED DAYTIME RUNNING LIGHTS



Honda LANEWATCH™⁴



DRIVER'S SEAT WITH TWO-POSITION MEMORY



SIDE MIRRORS WITH INTEGRATED TURN INDICATORS



SMART ENTRY



PUSH BUTTON START



iPhone® and cables are not included.

MULTI-FUNCTIONAL CENTER CONSOLE



DUAL-ZONE AUTOMATIC CLIMATE CONTROL

LED DAYTIME RUNNING LIGHTS

These sleek lights add a stylistic touch and help improve your visibility to other vehicles on the road (EX and above).

Honda LANEWATCH⁴

Honda LaneWatch uses a small camera to put your passenger-side view right in front of you on the Display Audio screen (EX and above).

SMART ENTRY

Hop in without ever taking your keys out of your pocket. Smart Entry recognizes when your key is near the vehicle, so you can lock or unlock the doors without using a key (EX and above).

PUSH BUTTON START

The CR-V can identify when your key is inside the vehicle, so all you need to do is press the button to turn on the engine (EX and above).

DRIVER'S SEAT WITH TWO-POSITION MEMORY

Your two keys can remember each driver's preferred seat settings. Once set, the seat will automatically adjust as you enter the CR-V (Touring).

SIDE MIRRORS WITH INTEGRATED TURN INDICATORS

Turn indicators on the side mirrors help improve your visibility in high-traffic areas (Touring).

MULTI-FUNCTIONAL CENTER CONSOLE

The intelligently designed center console keeps your daily carry-ons organized. EX and above models feature two USB ports.

DUAL-ZONE AUTOMATIC CLIMATE CONTROL

This system keeps everyone comfortable by allowing both the driver and the front passenger to set different temperature levels (EX-L, Touring).



CR-V Touring shown with Beige Leather.

Multi-tasker.

VERSATILITY

In a world filled with to-do lists, the CR-V is designed to adapt to your everyday needs. So whether you're hauling sports gear, picking up groceries or taking your friends out for a spin, there's plenty of room, and then some.



CR-V Touring shown in Urban Titanium Metallic with Beige Leather.

Honda reminds you to properly secure cargo items.

POWER MOONROOF
Get some air with the one-touch power moonroof. When you've had enough sun, use the sliding sunshade to stay cool (EX and above).

POWER TAILGATE
Use buttons located on your key, inside the driver's area and on the tailgate to raise and lower the tailgate (Touring).

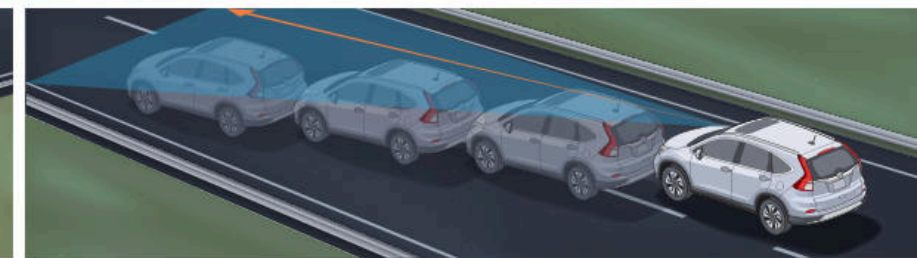
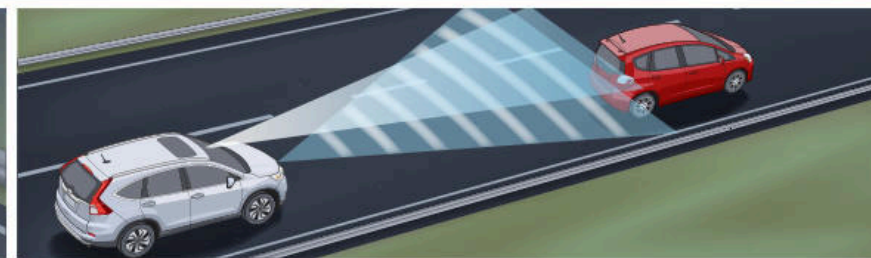
2+3+STUFF
Comfortably seat two adult passengers in the first row and three in the back while hauling your cargo.

HEATED FRONT SEATS
Seats with built-in heaters and hi/lo settings are featured on EX and above models.

Honda Sensing™



CR-V 2WD Touring shown in Modern Steel Metallic.



The CR-V Touring comes equipped with Honda Sensing technology. This suite of safety and driver-assistive features helps improve the driver's situational awareness, and in some cases intervenes to help avoid a collision or mitigate its severity.

LANE KEEPING ASSIST SYSTEM (LKAS)⁵

When you start to drift from the center of a detected lane without a turn signal in use, LKAS applies mild steering torque to help bring you back to the middle (Touring).

COLLISION MITIGATION BRAKING SYSTEM™ (CMBS™)⁶

This ingenious system can sense a vehicle in front of the CR-V, sound a warning if a collision is likely and automatically apply brake pressure to help bring the vehicle to a stop (Touring).

ADAPTIVE CRUISE CONTROL (ACC)⁷

Set a desired speed and interval behind the vehicle detected directly in front of you. When the vehicle ahead changes speed, ACC adapts to help maintain the set interval (Touring).

LANE DEPARTURE WARNING (LDW)⁸

Alerts sound and flash when an unindicated lane departure is detected by the small camera behind the rearview mirror (Touring).



Your safety is our priority.

CR-V Touring shown in Basque Red Pearl II.



SAFETY

Our engineers design systems that not only help protect you, but also help you avoid collisions altogether. Honda brings you these advanced safety features on every 2016 CR-V.

VEHICLE STABILITY ASSIST™ (VSA®)
 During oversteer or understeer, VSA can brake individual wheels and/or reduce engine power to help restore your intended course.*

SMARTVENT® FRONT SIDE AIRBAGS
 In the event of a moderate-to-severe side impact, these airbags are designed to deploy and inflate quickly to maximize potential protection for properly seated occupants.†

ANTI-LOCK BRAKING SYSTEM (ABS)
 ABS pulses the brakes to help prevent wheel lockup and retain steering control during hard braking.

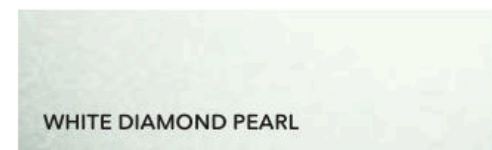
ELECTRONIC BRAKE DISTRIBUTION (EBD)
 The EBD system helps you maintain vehicular control while braking by distributing brake force among the four wheels, based on how much load each wheel is bearing.

REARVIEW CAMERA®
 All CR-V models come with a multi-angle rearview camera to help see more of what's behind you. View in three different modes: normal (shown), top-down and wide.

ACE™ BODY STRUCTURE
 The Honda-exclusive Advanced Compatibility Engineering™ body structure provides better protection from frontal collisions by dispersing crash energy more evenly throughout the front of the vehicle, transmitting less force to the cabin.

*VSA is not a substitute for safe driving. It cannot correct the vehicle's course in every situation or compensate for reckless driving. Control of the vehicle always remains with the driver.
 †Always use seat belts and appropriate child seats. Children 12 and under are safest when properly restrained in the rear seat.

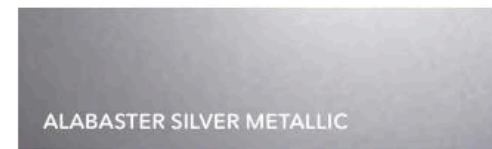
EXTERIOR



WHITE DIAMOND PEARL



MOUNTAIN AIR METALLIC



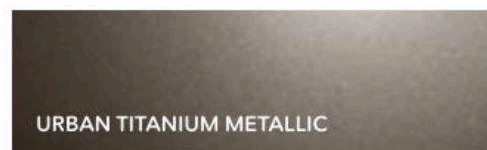
ALABASTER SILVER METALLIC



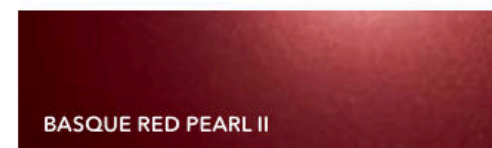
KONA COFFEE METALLIC



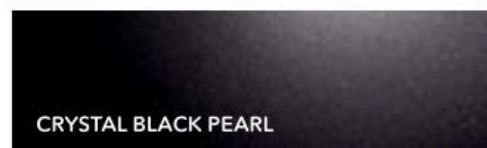
MODERN STEEL METALLIC



URBAN TITANIUM METALLIC



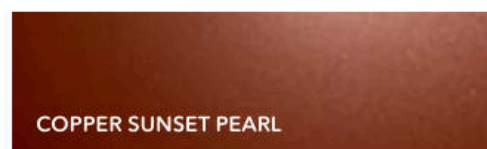
BASQUE RED PEARL II



CRYSTAL BLACK PEARL

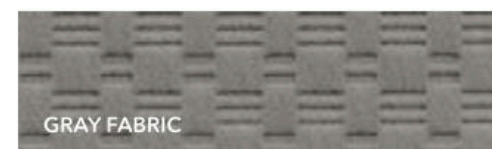


OBSIDIAN BLUE PEARL



COPPER SUNSET PEARL

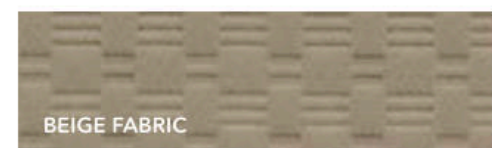
INTERIOR LX, SE & EX



GRAY FABRIC



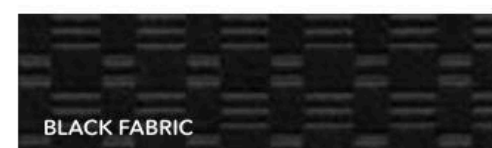
GRAY LEATHER



BEIGE FABRIC



BEIGE LEATHER



BLACK FABRIC



BLACK LEATHER

¹The Bluetooth® word mark and logos are owned by the Bluetooth SIG, Inc., and any use of such marks by Honda Motor Co., Ltd., is under license. ²Compatible with select phones with Bluetooth.® Your wireless carrier's rate plans apply. State or local laws may limit use of texting feature. Only use texting feature when conditions allow you to do so safely. ³HD Radio is a proprietary trademark of iBiquity Digital Corporation. ⁴Display accuracy will vary based on weather, size of object and speed, and the display may not show all relevant traffic. The display is not a substitute for your own direct visual assessment of traffic conditions before changing lanes. ⁵Lane Keeping Assist System (LKAS) only assists driver in maintaining proper lane position when lane markings are identified without a turn signal in use and can only apply mild steering torque to assist. LKAS may not detect all lane markings; accuracy will vary based on weather, speed and road condition. System operation affected by extreme interior heat. Driver remains responsible for safely operating vehicle and avoiding collisions. ⁶Depending on the circumstances, Collision Mitigation Braking System (CMBS) may not go through all the alert stages before initiating the last stage (of collision mitigation). CMBS cannot detect all objects ahead and may not detect a given object; accuracy will vary based on weather, speed and road condition. System operation affected by high interior heat. Driver remains responsible for safely operating vehicle and avoiding collisions. ⁷Adaptive Cruise Control (ACC) cannot detect all objects ahead and may not detect a given object; accuracy will vary based on weather, speed and other factors. ACC should not be used in heavy traffic, poor weather or on winding roads. ACC only includes a limited braking function; driver remains responsible for slowing or stopping the vehicle to avoid a collision. ⁸Lane Departure Warning (LDW) only alerts drivers when lane drift is detected without a turn signal in use. LDW may not detect all lane markings or lane departures; accuracy will vary based on weather, speed and road condition. System operation affected by extreme interior heat. Driver remains responsible for safely operating vehicle and avoiding collisions. ⁹Always visually confirm that it is safe to drive before backing up; the rearview camera display does not provide complete information about all conditions and objects at the rear of your vehicle. ¹⁰Pandora, the Pandora logo, and the Pandora trade dress are trademarks or registered trademarks of Pandora Media, Inc. Used with permission. Compatible with select smartphones. See: www.pandora.com/everywhere/mobile. Not all devices compatible with USB connection. Your wireless carrier's rate plans apply. ¹¹The USB Audio Interface is used for direct connection to and control of some current digital audio players and other USB devices that contain MP3, WMA or AAC music files. Some USB devices with security software and digital rights-protected files may not work. Please see your Honda dealer for details. ¹²185 hp @ 6400 rpm (SAE net). ¹³For optimal tire wear and performance, tire pressure should be checked regularly with a gauge. Do not rely solely on the monitor system. Please see your Honda dealer for details. ¹⁴Depending on use, HondaLink® can transmit to Honda and its providers a vehicle's location, speed and other operating conditions, information that may be tied to the vehicle identification number (VIN) and can be combined to create a track of a vehicle. For a full explanation of HondaLink functionality and Honda's data use and privacy policy, see <http://owners.honda.com/hondalink>. ¹⁵SiriusXM services require a subscription after any trial period. If you decide to continue your SiriusXM service at the end of your trial subscription, the plan you choose will automatically renew and bill at then-current rates until you call SiriusXM at 1-866-635-2349 to cancel. See our Customer Agreement for complete terms at www.siriusxm.com. Fees and programming subject to change. XM satellite service is available only to those at least 18 years and older in the 48 contiguous United States and D.C. ©2015 SiriusXM Radio Inc. Sirius, XM and all related marks and logos are trademarks of SiriusXM Radio Inc. ¹⁶The Honda Satellite-Linked Navigation System™ is available on EX-L models and standard on Touring models in the United States, Canada and Puerto Rico. (Honda HD Digital Traffic service only available in the United States, except Alaska.) Please see your Honda dealer for details. ¹⁷HomeLink® is a registered trademark of Genex Corporation. ¹⁸3-Year/36,000-Mile Limited Warranty. 5-Year/60,000-Mile Limited Powertrain Warranty. Ordinary maintenance or adjustments, parts subject to normal wear and replacement, and certain items are excluded. Please see your Honda dealer for the terms and conditions of the limited warranties. ¹⁹NHL and the NHL Shield are registered trademarks of the National Hockey League. ©NHL 2015. All Rights Reserved. ²⁰The Twitter bird logo and Stylized V logo are trademarks of Twitter, Inc., or its affiliates. **Honda reminds you and your passengers to always use seat belts and appropriate child seats. Children 12 and under are safest when properly restrained in the rear seat.** Specifications, features, illustrations and equipment shown in this brochure are based upon latest available information at the time of printing. Although descriptions are believed to be correct, accuracy cannot be guaranteed. American Honda Motor Co., Inc., reserves the right to make changes at any time, without notice or obligation, in colors, specifications, accessories, materials and models. Some features mentioned herein are not available in all areas. Please see your Honda dealer for details. Some vehicles may be shown with optional equipment. Available = Optional. All images contained herein are either owned by American Honda Motor Co., Inc., or used under a valid license. It is a violation of federal law to reproduce these images without express written permission from American Honda Motor Co., Inc., or the individual copyright owner of such images. Honda Financial Services is a DBA of American Honda Finance Corporation. Honda, the H mark symbol, Honda Care, Honda LaneWatch, HondaLink, Honda Satellite-Linked Navigation System, Honda Sensing, Advanced Compatibility Engineering, ACE, Collision Mitigation Braking System, CMBS, ECON logo, HandsFreeLink, i-TEC, Real Time AWD with Intelligent Control System, SmartVent, Vehicle Stability Assist and VSA are trademarks of Honda Motor Co., Ltd. ©2015 American Honda Motor Co., Inc.

KEY STANDARD FEATURES FOR ALL CR-V MODELS

- Multi-angle rearview camera⁹ with guidelines
- Bluetooth®¹¹ HandsFreeLink® and streaming audio
- SMS text message function²
- Pandora®¹⁰ compatibility
- USB Audio Interface¹¹
- Easy fold-down 60/40 split rear seat

TRIM COMBINATIONS

| Exterior/Interior Colors | LX, SE & EX |
|---------------------------|------------------|
| Alabaster Silver Metallic | Black* or Gray |
| Basque Red Pearl II | Gray† |
| Copper Sunset Pearl | Black* |
| Crystal Black Pearl | Black |
| Kona Coffee Metallic | Black* |
| Modern Steel Metallic | Gray |
| Mountain Air Metallic | Beige† |
| Obsidian Blue Pearl | Gray† |
| Urban Titanium Metallic | Black† or Beige* |
| White Diamond Pearl | Beige |

*EX only. †Not available on LX.

| Exterior/Interior Colors | EX-L & TOURING |
|---------------------------|----------------|
| Alabaster Silver Metallic | Black or Gray |
| Basque Red Pearl II | Gray |
| Copper Sunset Pearl | Black |
| Crystal Black Pearl | Black |
| Kona Coffee Metallic | Black |
| Modern Steel Metallic | Gray |
| Mountain Air Metallic | Beige |
| Obsidian Blue Pearl | Gray |
| Urban Titanium Metallic | Black or Beige |
| White Diamond Pearl | Black or Beige |

SPECIFICATIONS



LX

LX

- 185-hp,¹² 2.4-liter i-TEC® 4-cylinder engine with direct injection
- Continuously variable transmission (CVT)
- Available Real Time AWD with Intelligent Control System™
- Hill start assist
- Vehicle Stability Assist™ (VSA®) with traction control
- Multi-angle rearview camera⁹ with guidelines
- Tire Pressure Monitoring System (TPMS)¹³
- Daytime Running Lights (DRL)
- Remote entry system
- i-MID with 5-inch LCD screen and customizable feature settings
- Bluetooth®¹¹ HandsFreeLink® and streaming audio
- Cruise control
- Tilt and telescopic steering column
- Illuminated steering wheel-mounted controls
- Map lights
- Easy fold-down 60/40 split rear seat
- 160-watt audio system with 4 speakers
- Pandora®¹⁰ compatibility
- SMS text message function²
- USB Audio Interface¹¹ (1 port in center console)



SE

SE adds to or replaces LX features

- 17-inch alloy wheels
- Rear privacy glass
- Security system



EX-L

EX-L adds to or replaces EX features

- Roof rails
- Heated side mirrors
- Dual-zone automatic climate control system
- Leather-trimmed interior
- 328-watt premium audio system with 7 speakers, including subwoofer
- SiriusXM® Radio¹⁵
- Available Honda Satellite-Linked Navigation System™¹⁶ with voice recognition, Honda HD Digital Traffic and HD Radio™³.



EX

EX adds to or replaces SE features

- LED Daytime Running Lights (DRL)
- Auto-on/off headlights
- One-touch power moonroof with tilt feature
- Smart Entry
- Fog lights
- Honda LaneWatch™¹⁴
- Push button start
- Retractable cargo area cover
- Driver's seat with 10-way power adjustment, including power lumbar support
- Heated front seats
- 160-watt audio system with 6 speakers
- 7-inch Display Audio with electrostatic touch-screen
- HondaLink®¹⁴ Next Generation
- USB Audio Interface¹¹ (2 ports in center console)



TOURING

TOURING adds to or replaces EX-L features

- 18-inch alloy wheels
- Collision Mitigation Braking System™ (CMBS™)⁶
- Lane Departure Warning (LDW)⁸
- Power tailgate
- Lane Keeping Assist System (LKAS)⁵
- Adaptive Cruise Control (ACC)⁷
- HomeLink®¹⁷ remote system
- Driver's seat with two-position memory
- Honda Satellite-Linked Navigation System™¹⁶ with voice recognition, Honda HD Digital Traffic and HD Radio³



Whether you buy or lease a Honda vehicle, Honda Financial Services can assist you with the process. Please ask your dealer which lease or purchase plan best suits your needs.



Honda Care® is an affordable, comprehensive vehicle and travel protection plan backed by Honda reliability, service and parts. Please see your Honda dealer for details.



Manufactured to the same strict standards as Honda vehicles, Honda Genuine Accessories are the perfect way to personalize and protect your vehicle. Please see your Honda dealer for details.

All 2016 Honda vehicles - and any Honda Genuine Accessories installed at the time of vehicle purchase - are covered by a 3-year/36,000-mile limited warranty.¹⁸ Plus, Honda cars and trucks are covered by a 5-year/60,000-mile Limited Powertrain Warranty¹⁸ too. For more information or assistance, see your Honda dealer or please give us a call at 1-800-33-Honda.

24-hour emergency road service is available to you in the United States, Puerto Rico and Canada throughout your 3-year/36,000-mile limited warranty term, starting with 2015 vehicles. Services include jump-starting, flat tire and lockout assistance, towing, and more (limitations apply). Call 1-866-864-5211.

For more information and complete specifications, go to crv.honda.com



crv.honda.com



Powerful. Agile. Versatile enough to handle almost any condition. It's no wonder Honda is the official vehicle of the NHL.^{®15}



Join the millions of other Honda fans and connect with us socially.²⁰