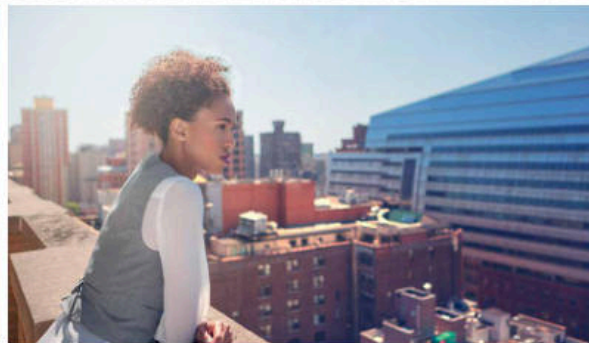
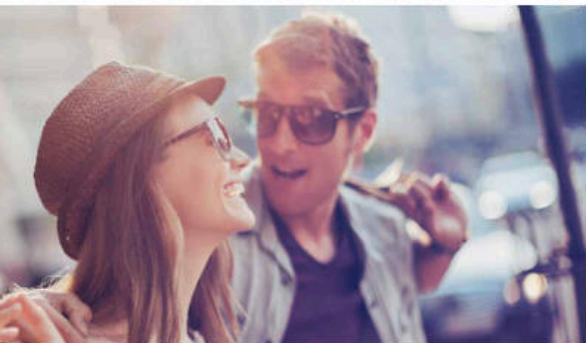




CR-V



2017





CR-V Touring shown with Gray Leather.



THE ALL-NEW 2017 CR-V:

## THE BAR HAS BEEN RAISED, AGAIN

The vehicle that defined a category now redefines what a compact sport-utility vehicle can be. Introducing the completely reimagined Honda CR-V: delivering a wealth of standard features and driver and passenger conveniences, all backed by the available Honda Sensing™ suite of safety and driver-assistive technologies. Welcome to the new standard in comfort, style and versatility.



#### MORE ROOM FOR WHAT MATTERS

Generous cargo space becomes even roomier with a fold-flat second row and extended luggage compartment. Whether you're running errands or roaming across the country, the CR-V has room to spare.\*

\*Honda reminds you to properly secure cargo items.



SPACIOUS CABIN:

## TRAVEL IN STYLE

Discover a new standard in comfort and style with a cabin boasting attention to every detail. From front seats redesigned for greater comfort to more rear legroom than even many larger SUVs, you and your passengers are comfortable from Point A to B.

CR-V Touring shown with Black Leather.



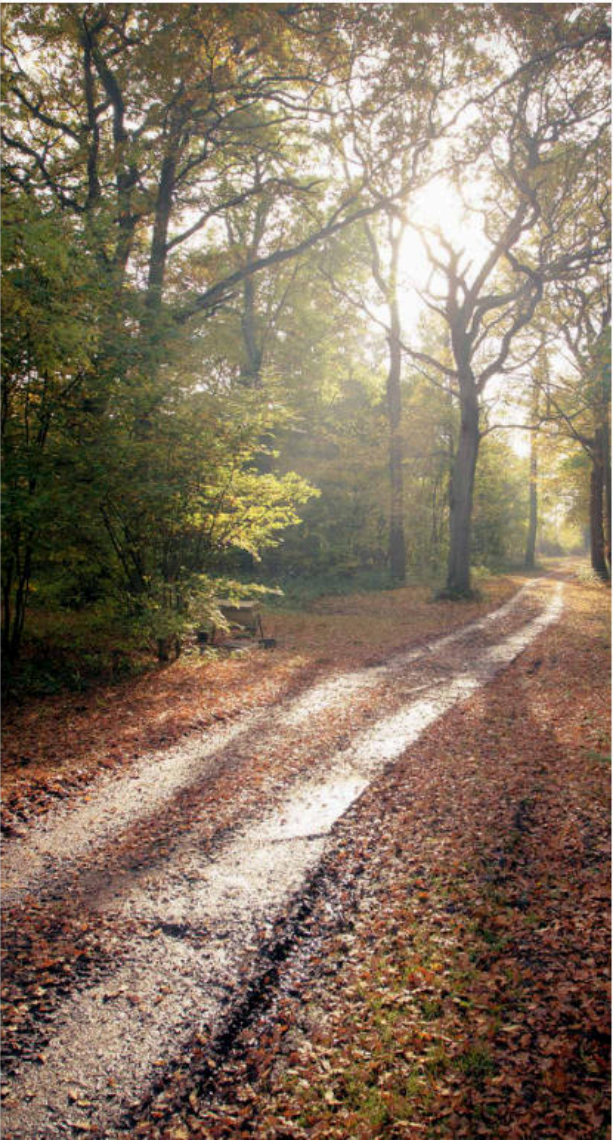
CR-V AWD Touring shown in Molten Lava Pearl.

CONFIDENT AND CAPABLE DRIVE:

# ONE CR-V FOR LIFE'S MANY ROADS

A vehicle designed for a superior driving experience makes for better exploration of the roads ahead. With enhanced handling capabilities and a new 190-hp<sup>1</sup> turbocharged engine (EX and above) that received an impressive 34-mpg highway rating,\* the new CR-V ignites your sense of adventure. Because no matter where you're going, there's always more to do, more to see, and more to experience—every day.

\*28 city/34 highway/30 combined mpg rating for 2WD models. 27 city/33 highway/29 combined mpg rating for AWD models. Based on 2017 EPA mileage ratings. Use for comparison purposes only. Your mileage will vary depending on how you drive and maintain your vehicle, driving conditions and other factors.





CR-V AWD Touring shown in Dark Olive Metallic with accessory crossbars and roof box.

Honda reminds you to properly secure cargo items.

A WEALTH OF UPGRADES:

## A STAND-OUT EXPERIENCE

Every surface, every contour, and every feature has been thoughtfully designed to create a truly superior driving experience in every sense. The new CR-V brings together an impressive collection of features and conveniences, all designed with you in mind.

### STEERING WHEEL-MOUNTED CONTROLS

Whether you need to change the song, make a call or find directions on the available navigation system, you can access the controls right from your steering wheel.\*

### DISPLAY AUDIO

Your entire world is just a tap away. Access your favorite music through an easy-to-use app-enabled touch-screen display (EX and above).

### ELECTRIC PARKING BRAKE

Simply flip back the small lever next to the shifter to engage, reducing the effort it takes to apply the parking brake and freeing up space on the center console.

### REAR USB PORTS

Keep your passengers powered up for whatever comes next with dual 2.5-amp USB charging ports in the second row (EX and above).

### DUAL-ZONE AUTOMATIC CLIMATE CONTROL

Set one temperature for the driver and another for the front passenger, so both of you can travel in total comfort (EX and above).

### EASY FOLD-DOWN 60/40 SPLIT REAR SEAT

A rear seat that folds down in one motion means flatter, longer cargo space than ever before. Now you can carry more or make even bigger plans.



STEERING WHEEL-MOUNTED CONTROLS



DISPLAY AUDIO



ELECTRIC PARKING BRAKE



REAR USB PORTS

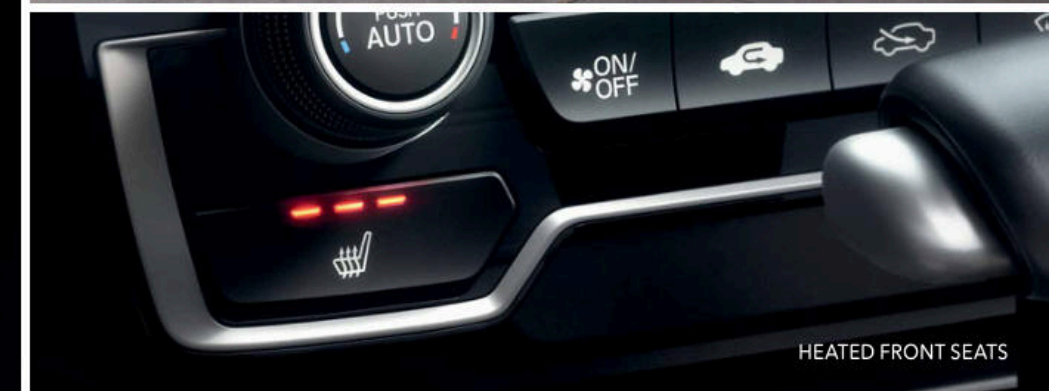


DUAL-ZONE AUTOMATIC CLIMATE CONTROL



EASY FOLD-DOWN 60/40 SPLIT REAR SEAT

\*Drive responsibly. Some state laws prohibit the operation of handheld electronic devices while operating a vehicle. For safety reasons, always launch your audio application or perform any other operation on your phone or audio device only when the vehicle is safely parked.



CR-V Touring shown with Gray Leather.

POWER FRONT SEATS

POWER TAILGATE WITH PROGRAMMABLE HEIGHT

HANDS-FREE ACCESS POWER TAILGATE

HEATED FRONT SEATS

INNOVATIVE FEATURES:

## EXCELLENCE IN EVERY DETAIL

The new CR-V delivers more comforts and conveniences than ever, from an available leather-trimmed interior to a power tailgate (EX-L, Touring). Because design that enhances is the Honda way.

### POWER FRONT SEATS

Find the perfect driving position with 12 ways to adjust, including 4-way power lumbar support (EX and above).

### POWER TAILGATE WITH PROGRAMMABLE HEIGHT

Your tailgate opens to your exact specifications (EX-L, Touring). And as a Honda first, hands-free access means you can open the tailgate with the kick of a leg (Touring).

### HEATED FRONT SEATS

An upgraded heating element means that your seats go from zero to toasty in less time (EX and above).

### POWER MOONROOF

Gain a more enlightened perspective with a truly uplifting feature (EX and above).

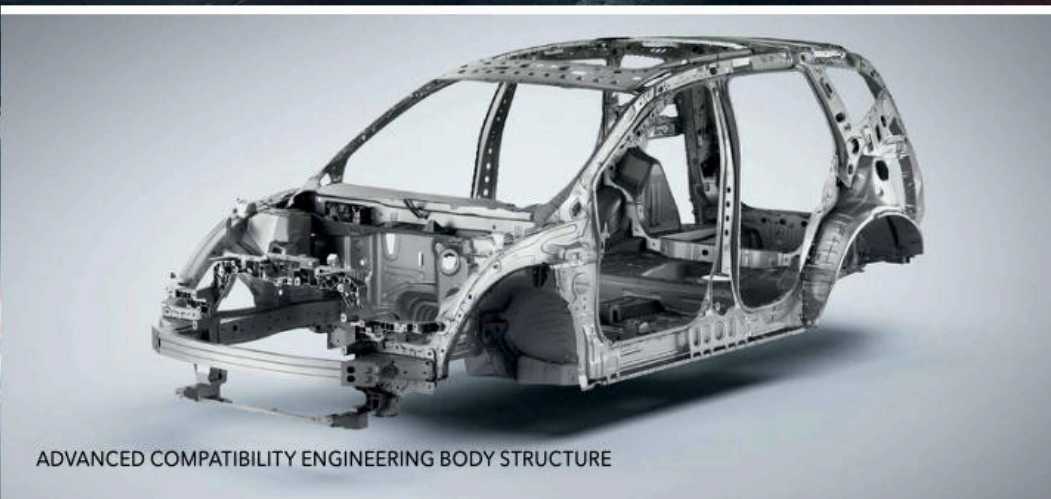
SAFETY/DRIVER-ASSISTIVE:

# COMMUTE WITH CONFIDENCE

This suite of standard safety and driver-assistive technologies can help you sense things you might miss while driving (EX and above). In some cases, they can even help you avoid a collision or mitigate its severity.



CROSS TRAFFIC MONITOR



ADVANCED COMPATIBILITY ENGINEERING BODY STRUCTURE



BLIND SPOT INFORMATION SYSTEM

**COLLISION MITIGATION BRAKING SYSTEM™ (CMBS™)**<sup>2</sup>  
CMBS can help bring your CR-V to a stop by automatically applying brake pressure when the system determines that a frontal collision is unavoidable.

**ROAD DEPARTURE MITIGATION SYSTEM (RDM)**<sup>3</sup>  
RDM can determine if you cross over detected lanes without signaling, can provide steering assistance to help you stay in your lane or provide braking to keep from leaving the roadway entirely.

**LANE KEEPING ASSIST SYSTEM (LKAS)**<sup>4</sup>  
With your hands on the steering wheel, long highway drives are easier with LKAS, which subtly adjusts steering to help keep the CR-V centered in a detected lane.

**ADAPTIVE CRUISE CONTROL (ACC)**<sup>5</sup> WITH LOW-SPEED FOLLOW  
ACC helps you maintain a set following interval behind detected vehicles for highway driving. After stopping, a tap on the throttle instructs the car to continue maintaining the desired interval.

**BLIND SPOT INFORMATION SYSTEM (BSI)**<sup>6</sup>  
BSI uses radar sensors to detect the presence of vehicles to the side of and behind the CR-V, to assist you during lane changes. Warning indicators in the side mirrors alert you if the system detects a vehicle in your blind spot.

**CROSS TRAFFIC MONITOR**<sup>7</sup>  
Sensors at the rear corners of the CR-V can detect vehicles approaching from either side when backing up. The driver is alerted by an audible chime and arrows in the rearview camera display.

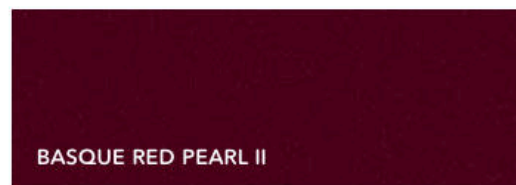
## EXTERIOR



LUNAR SILVER METALLIC



WHITE DIAMOND PEARL



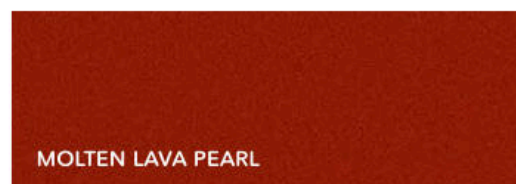
BASQUE RED PEARL II



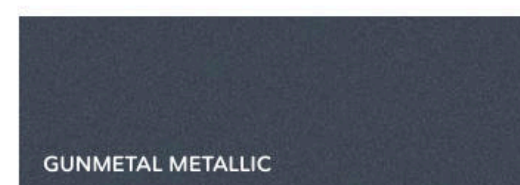
MODERN STEEL METALLIC



SANDSTORM METALLIC



MOLTEN LAVA PEARL



GUNMETAL METALLIC



OBSIDIAN BLUE PEARL



DARK OLIVE METALLIC

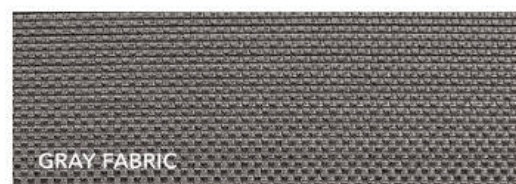


CRYSTAL BLACK PEARL

## INTERIOR LX / EX



IVORY FABRIC

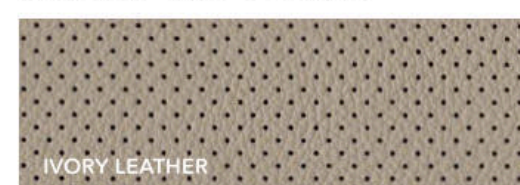


GRAY FABRIC



BLACK FABRIC

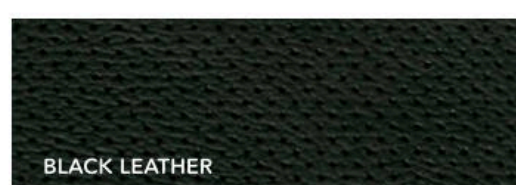
## INTERIOR EX-L / TOURING



IVORY LEATHER



GRAY LEATHER



BLACK LEATHER

<sup>1</sup>190 hp @ 5600 rpm (SAE net). <sup>2</sup>CMBS cannot detect all objects ahead and may not detect a given object; accuracy will vary based on weather, speed and other factors. System operation affected by extreme interior heat. System designed to mitigate crash forces. Driver remains responsible for safely operating vehicle and avoiding collisions. <sup>3</sup>Road Departure Mitigation only alerts drivers when lane drift is detected without a turn signal in use and can apply mild steering torque to assist driver in maintaining proper lane position and/or brake pressure to slow the vehicle's departure from a detected lane. RDM may not detect all lane markings or lane departures; accuracy will vary based on weather, speed and road condition. System operation affected by extreme interior heat. Driver remains responsible for safely operating vehicle and avoiding collisions. <sup>4</sup>LKAS only assists driver in maintaining proper lane position when lane markings are identified without a turn signal in use and can only apply mild steering torque to assist. LKAS may not detect all lane markings; accuracy will vary based on weather, speed and road condition. System operation affected by extreme interior heat. Driver remains responsible for safely operating vehicle and avoiding collisions. <sup>5</sup>Adaptive Cruise Control (ACC) with low-speed follow cannot detect all objects ahead and may not detect a given object; accuracy will vary based on weather, speed, and other factors. ACC should not be used in heavy traffic, poor weather, or on winding roads. Driver remains responsible for safely operating vehicle and avoiding collisions. <sup>6</sup>The system is not a substitute for your own visual assessment before changing lanes. BSI may not detect all objects behind or to the side of a vehicle and may not detect a given object; system accuracy will vary based on weather, size of object, and speed. Driver remains responsible for safely operating vehicle and avoiding collisions. <sup>7</sup>Always visually confirm that it is safe to drive before backing up, as the rearview camera and cross traffic monitor may not provide complete information about conditions at the rear of your vehicle. Monitor cannot detect all objects behind or to the side of a vehicle and may not detect a given object; system accuracy will vary based on weather, size of object, and speed. Driver remains responsible for safely operating vehicle and avoiding collisions. <sup>8</sup>184 hp @ 6400 rpm (SAE net). <sup>9</sup>Always visually confirm that it is safe to drive before backing up; the rearview camera display does not provide complete information about all conditions and objects at the rear of your vehicle. <sup>10</sup>The Bluetooth® word mark and logos are owned by the Bluetooth SIG, Inc., and any use of such marks by Honda Motor Co., Ltd., is under license. <sup>11</sup>Pandora, the Pandora logo, and the Pandora trade dress are trademarks or registered trademarks of Pandora Media, Inc. Used with permission. Compatible with select smartphones. See: www.pandora.com/anywhere/mobile. Not all devices compatible with USB connection. Your wireless carrier's rate plans apply. <sup>12</sup>The USB Audio Interface is used for direct connection to and control of some current digital audio players and other USB devices that contain MP3, WMA or AAC music files. Some USB devices with security software and digital rights-protected files may not work. Please see your Honda dealer for details. <sup>13</sup>Depending on use, HondaLink® can transmit to Honda and its providers a vehicle's location, speed and other operating conditions, information that may be tied to the vehicle identification number (VIN) and can be combined to create a track of a vehicle. For a full explanation of HondaLink functionality and Honda's data use and privacy policy, see <http://owners.honda.com/hondalink>. <sup>14</sup>Apple CarPlay is a trademark of Apple Inc. <sup>15</sup>Android and Android Auto are trademarks of Google Inc. <sup>16</sup>SiriusXM services require a subscription after any trial period. If you decide to continue your SiriusXM service at the end of your trial subscription, the plan you choose will automatically renew and bill at then-current rates until you call SiriusXM at 1-866-635-2349 to cancel. See our Customer Agreement for complete terms at [www.siriusxm.com](http://www.siriusxm.com). Fees and programming subject to change. XM satellite service is available only to those at least 18 years and older in the 48 contiguous United States and D.C. ©2016 SiriusXM Radio Inc. Sirius, XM and all related marks and logos are trademarks of SiriusXM Radio Inc. <sup>17</sup>Compatible with select phones with Bluetooth®. Your wireless carrier's rate plans apply. State or local laws may limit use of texting feature. Only use texting feature when conditions allow you to do so safely. <sup>18</sup>HomeLink® is a registered trademark of Gentex Corporation. <sup>19</sup>HD Radio™ is a proprietary trademark of iBiquity Digital Corporation. <sup>20</sup>The Honda Satellite-Linked Navigation System™ is available on EX-L models and standard on Touring models in the United States, Canada and Puerto Rico. (Honda HD Digital Traffic service only available in the United States, except Alaska.) Please see your Honda dealer for details. <sup>21</sup>3-Year/36,000-Mile Limited Warranty, 5-Year/60,000-Mile Limited Powertrain Warranty. Ordinary maintenance or adjustments, parts subject to normal wear and replacement, and certain items are excluded. Please see your Honda dealer for the terms and conditions of the limited warranties. <sup>22</sup>NHL and the NHL Shield are registered trademarks of the National Hockey League. ©NHL 2016. All Rights Reserved. <sup>23</sup>The Twitter bird logo and Stylized V logo are trademarks of Twitter, Inc., or its affiliates. Phone is a registered trademark of Apple Inc. **Honda reminds you and your passengers to always use seat belts and appropriate child seats. Children 12 and under are safest when properly restrained in the rear seat.** Specifications, features, illustrations and equipment shown in this brochure are based upon latest available information at the time of printing. Although descriptions are believed to be correct, accuracy cannot be guaranteed. American Honda Motor Co., Inc., reserves the right to make changes at any time, without notice or obligation, in colors, specifications, accessories, materials and models. Some features mentioned herein are not available in all areas. Please see your Honda dealer for details. Some vehicles may be shown with optional equipment. Available = Optional. All images contained herein are either owned by American Honda Motor Co., Inc., or used under a valid license. It is a violation of federal law to reproduce these images without express written permission from American Honda Motor Co., Inc., or the individual copyright owner of such images. Honda Financial Services is a DBA of American Honda Finance Corporation. Honda, the H mark symbol, Honda Care, HondaLink, Honda Satellite-Linked Navigation System, Honda Sensing, Advanced Compatibility Engineering, ACE, Collision Mitigation Braking System, CMBS, Eco Assist, ECON logo, HandsFreeLink, i-VTEC and Real Time AWD with Intelligent Control System are trademarks of Honda Motor Co., Ltd. ©2016 American Honda Motor Co., Inc.

## SPECIFICATIONS



### LX

- 184-hp,<sup>8</sup> 2.4-liter i-VTEC® 4-cylinder engine with direct injection
- Continuously variable transmission (CVT)
- Electric parking brake with automatic brake hold
- Eco Assist™ System
- Available Real Time AWD with Intelligent Control System™
- Hill start assist
- 17-inch alloy wheels
- Six airbags
- Multi-angle rearview camera<sup>9</sup> with guidelines
- LED Daytime Running Lights (DRL)
- Fin-type roof-mounted antenna
- Remote entry system
- Roofline spoiler with integrated brake light
- Capless fuel filler
- Tilt and telescopic steering column
- Illuminated steering wheel-mounted controls
- Easy fold-down 60/40 split rear seat
- Bluetooth®<sup>10</sup> HandsFreeLink® and streaming audio
- Pandora®<sup>11</sup> compatibility
- USB Audio Interface<sup>12</sup> (1.0-amp port in center console)



### EX adds to or replaces LX features

- 190-hp,<sup>1</sup> 1.5-liter turbocharged and intercooled DOHC 4-cylinder engine with direct injection
- Remote engine start
- 18-inch alloy wheels
- Multi-angle rearview camera<sup>9</sup> with dynamic guidelines
- Honda Sensing™ suite of safety and driver-assistive features
- Auto-on/off headlights with auto high-beam
- Blind spot information system (BSI)<sup>6</sup> with cross traffic monitor<sup>7</sup>
- Rear privacy glass
- Security system
- Smart Entry with push button start
- One-touch power moonroof with tilt feature
- Fog lights
- Heated, body-colored power side mirrors including integrated turn indicators
- Dual-zone automatic climate control system
- Retractable cargo area cover
- Power windows with auto-up/down driver's and front passenger's windows
- Power door and tailgate locks with walk-away auto-lock feature
- Heated front seats
- Driver's seat with 12-way power adjustment, including 4-way power lumbar support
- 7-inch Display Audio with electrostatic touch-screen
- HondaLink®<sup>13</sup>
- Apple CarPlay™<sup>14</sup>
- Android Auto™<sup>15</sup>
- SiriusXM® Radio<sup>16</sup>
- SMS text message function<sup>17</sup>
- USB Audio Interface<sup>12</sup> (1.0-amp & 1.5-amp ports in center console)
- 2nd-row 2.5 amp USB charging ports (2)



### EX-L adds to or replaces EX features

- Power tailgate with programmable height
- Leather-wrapped steering wheel and shift knob
- Automatic-dimming rearview mirror
- HomeLink®<sup>18</sup> remote system
- Driver's seat with two-position memory
- Leather-trimmed seats
- Passenger's seat with 4-way power adjustment
- HD Radio™<sup>19</sup>
- Available Honda Satellite-Linked Navigation System™<sup>20</sup> with voice recognition and Honda HD Digital Traffic



### TOURING adds to or replaces EX-L features

- Rain-sensing windshield wipers
- Hands-free access power tailgate
- Roof rails
- LED headlights (low and high beam)
- Dual chrome exhaust finishers
- 330-watt premium audio system with 9 speakers, including subwoofer
- Honda Satellite-Linked Navigation System™<sup>20</sup> with voice recognition and Honda HD Digital Traffic

## KEY STANDARD FEATURES FOR ALL CR-V MODELS

- LED Daytime Running Lights (DRL)
- Capless fuel filler
- Easy fold-down 60/40 split rear seat
- Bluetooth®<sup>10</sup> HandsFreeLink® and streaming audio
- Hill start assist
- Multi-angle rearview camera<sup>9</sup> with guidelines
- Electric parking brake with automatic brake hold



Whether you buy or lease a Honda vehicle, Honda Financial Services can assist you with the process. Please ask your dealer which lease or purchase plan best suits your needs.



Honda Care® is an affordable, comprehensive vehicle and travel protection plan backed by Honda reliability, service and parts. Please see your Honda dealer for details.



Manufactured to the same strict standards as Honda vehicles, Honda Genuine Accessories are the perfect way to personalize and protect your vehicle. Please see your Honda dealer for details.

All 2017 Honda vehicles – and any Honda Genuine Accessories installed at the time of vehicle purchase – are covered by a 3-year/36,000-mile limited warranty.<sup>21</sup> Plus, Honda cars and trucks are covered by a 5-year/60,000-mile Limited Powertrain Warranty.<sup>21</sup> For more information or assistance, see your Honda dealer or please give us a call at 1-800-33-Honda.

24-hour emergency road service is available to you in the United States, Puerto Rico and Canada throughout your 3-year/36,000-mile limited warranty term. Services include jump-starting, flat tire and lockout assistance, towing, and more (limitations apply). Call 1-866-864-5211.



Powerful. Agile. Versatile enough to handle almost any condition. It's no wonder Honda is the official vehicle of the NHL.<sup>22</sup>

Join the millions of other Honda fans and connect with us socially.<sup>23</sup>

