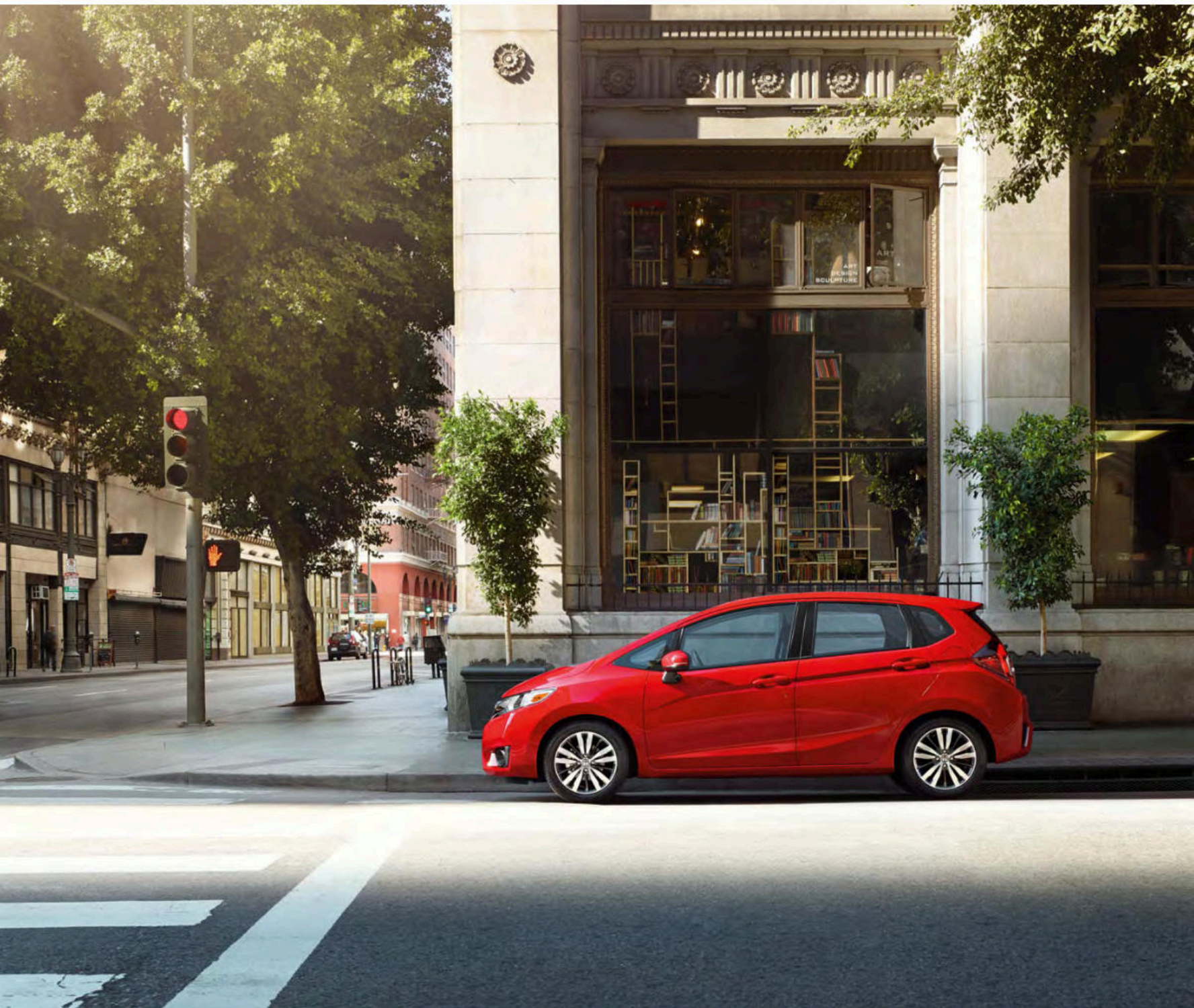


2016

# FIT





Fit EX-L shown in Milano Red with available Honda Satellite-Linked Navigation System.™

Fit EX-L shown in Milano Red.

THE 2016 FIT

Small on the outside, roomy on the inside and fierce under the hood. That's the 2016 Fit. It's got space for practically everyone and anything, thanks to four different interior configurations. And it's packed with technology you'll love. See why the Fit is a great fit for you.



Fit EX-L shown in Milano Red with available Honda Satellite-Linked Navigation System.<sup>1</sup>



Fit EX-L shown with Black Leather and available Honda Satellite-Linked Navigation System.<sup>1</sup>

Loaded with luxuries.

INTERIOR DESIGN

**HondaLINK<sup>®2</sup> CONNECT**

Turn the Display Audio into an interface for some of your favorite iPhone<sup>®</sup> content, and you can leave your phone alone when driving (EX, EX-L).<sup>\*</sup>

**BLUETOOTH<sup>®3</sup> HANDSFREELINK<sup>®</sup>**

Every Fit comes with *Bluetooth* HandsFreeLink, so you can place and receive phone calls without taking your eyes off the road.<sup>\*</sup>

The Fit is every bit as functional as it is feisty. The available Honda Satellite-Linked Navigation System<sup>1</sup> helps you find your way and avoid gridlock. And parking in tight spaces is a lot easier when you use the multi-angle rearview camera,<sup>4</sup> standard on every model.

\*Drive responsibly. Some state laws prohibit the operation of handheld electronic devices while operating a vehicle. For safety reasons, always launch your audio application or perform any other operation on your phone or audio device only when the vehicle is safely parked.



Honda LANEWATCH™<sup>5</sup>



7-INCH DISPLAY AUDIO



PUSH BUTTON START



iPhone® and cable are not included.

USB AUDIO INTERFACE<sup>6</sup>



PADDLE SHIFTERS



HEATED FRONT SEATS



STEERING WHEEL-MOUNTED CONTROLS



CENTER CONSOLE

**Honda LANEWATCH<sup>5</sup>**

Get a better view of passenger-side traffic, thanks to an available tiny camera mounted under the side mirror. Honda LaneWatch helps shrink your blind spot by revealing nearly four times more than the mirror alone (EX, EX-L).

**7-INCH DISPLAY AUDIO**

Touch-screen technology is right up front. The Fit features a huge 7-inch Display Audio (EX, EX-L) that's a pinchable, swipeable command center\* for your music, communication, information and more.

**USB AUDIO INTERFACE<sup>6</sup>**

Connect your compatible smartphone, MP3 player or flash drive via USB, and you can play music and charge your devices.\*

**PADDLE SHIFTERS**

Race-inspired paddle shifters on EX and EX-L models with CVT give you more control and make your drive that much more fun.

**HEATED FRONT SEATS**

Warm up quickly with heated leather-trimmed front seats (EX-L).

**STEERING WHEEL-MOUNTED CONTROLS**

Make phone calls, select music and a lot more while keeping your hands on the wheel.\*

**PUSH BUTTON START**

Keep your key in your pocket or purse, and start the engine with the push of a button (EX, EX-L).

**CENTER CONSOLE**

A spacious center console is a great place to store all kinds of items.

\*Drive responsibly. Some state laws prohibit the operation of handheld electronic devices while operating a vehicle. For safety reasons, always launch your audio application or perform any other operation on your phone or audio device only when the vehicle is safely parked.



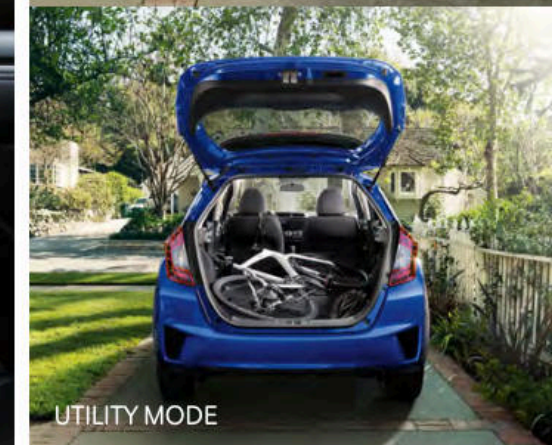
Fit EX-L shown with Black Leather.

**VERSATILITY**

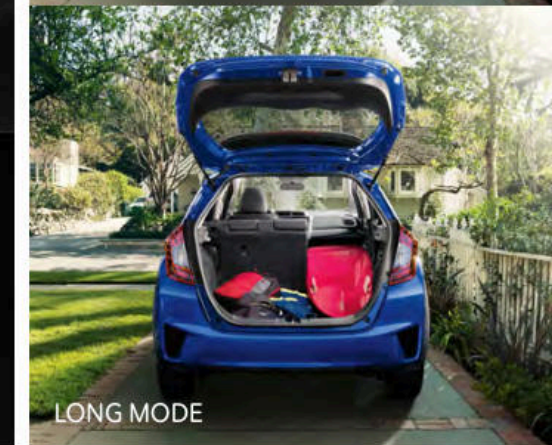
The Fit can take all kinds of people and all kinds of cargo all kinds of places, thanks to brilliant engineering and a little magic. The spacious interior has room for five, and the 2nd-row Magic Seat® helps you configure your Fit four different ways.



REFRESH MODE



UTILITY MODE



LONG MODE



TALL MODE

Honda reminds you to properly secure items in the cargo area.

**REFRESH MODE\***

Take off the front head restraints, fold back the front seats and you've got the perfect place to relax.

**UTILITY MODE**

Fold the Magic Seat down and you've got a class-leading 52.7 cu ft of cargo space.<sup>7</sup> It's amazing what fits in there.

**LONG MODE**

Fold down the right side of the rear seat and fold back the front passenger seat, and you can haul gear that's up to 7 feet, 9 inches long.<sup>7</sup>

**TALL MODE**

Sometimes you need a little extra room for taller items. Folding up the Magic Seat gives you almost four feet of space, top to bottom.<sup>7</sup>

\*Only use Refresh Mode when the vehicle is safely parked. Return the seat and head restraint to their original position before driving.



Experience amazing performances daily.

Fit LX shown in Modern Steel Metallic.

PERFORMANCE

**EARTH DREAMS® TECHNOLOGY CVT**

The available continuously variable transmission allows the engine to operate at optimal RPM levels and helped the Fit receive an impressive 41-mpg highway rating.\*

**ECO ASSIST™**

This eco-conscious technology comes standard on every Fit, and on models with a CVT, the ECON button helps you squeeze even more miles out of a gallon of gas.\*



Of course the Fit is fun to drive. It has a nimble chassis, a wide stance and ingenious EarthDreams Technology to give you plenty of zip and help you go longer between fill-ups.\*

\*29 city/37 highway/32 combined mpg rating for LX and EX 6MT models. 33 city/41 highway/36 combined mpg rating for LX CVT model. 32 city/38 highway/35 combined mpg rating for EX and EX-L CVT models. Based on 2016 EPA mileage ratings. Use for comparison purposes only. Your mileage will vary depending on how you drive and maintain your vehicle, driving conditions and other factors.

# Equipped with confidence.



Fit EX-L shown in Alabaster Silver Metallic.



ADVANCED COMPATIBILITY ENGINEERING™



MULTI-ANGLE REARVIEW CAMERA<sup>4</sup>

Fit EX-L shown in Alabaster Silver Metallic with available Honda Satellite-Linked Navigation System.<sup>3</sup>

## SAFETY

### TIRE PRESSURE MONITORING SYSTEM (TPMS)<sup>8</sup>

This ingenious system monitors the air pressure in all four tires, and alerts the driver when the pressure in any tire becomes significantly low.

### ANTI-LOCK BRAKING SYSTEM (ABS)

The anti-lock brakes help the driver retain steering control during hard stops, while Electronic Brake Distribution (EBD) distributes brake force among the four wheels based on how much load each wheel is bearing.

### ADVANCED COMPATIBILITY ENGINEERING (ACE™)

The Honda-exclusive ACE body structure design utilizes a network of connected structural elements to distribute frontal crash energy more evenly.

### SIX STANDARD AIRBAGS

The Fit is equipped with a full array of airbags including SmartVent<sup>®</sup> front side airbags, dual-stage front airbags (SRS) and side curtain airbags with rollover sensor.\*

### MULTI-ANGLE REARVIEW CAMERA<sup>4</sup>

Standard on every Fit, this incredibly useful feature helps show what's behind you from three different angles: Normal View, Wide View and Overhead View.

### VEHICLE STABILITY ASSIST™ (VSA<sup>®</sup>)

During an understeer or oversteer condition, VSA<sup>+</sup> can brake individual wheels and/or reduce engine power to help restore your intended course.

\*Honda reminds you and your passengers to always use seat belts and appropriate child seats. Children 12 and under are safest when properly restrained in the rear seat. <sup>3</sup>VSA is not a substitute for safe driving. It cannot correct the vehicle's course in every situation or compensate for reckless driving. Control of the vehicle always remains with the driver.

## EXTERIOR



WHITE ORCHID PEARL



AEGEAN BLUE METALLIC



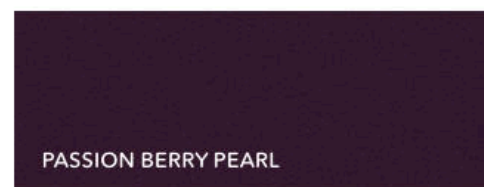
ALABASTER SILVER METALLIC



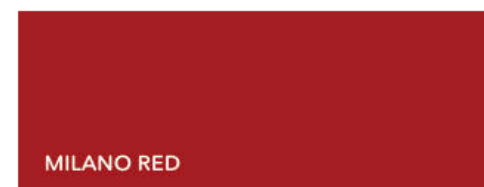
MYSTIC YELLOW PEARL



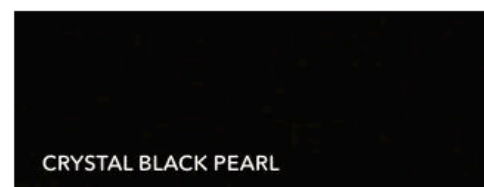
MODERN STEEL METALLIC



PASSION BERRY PEARL



MILANO RED



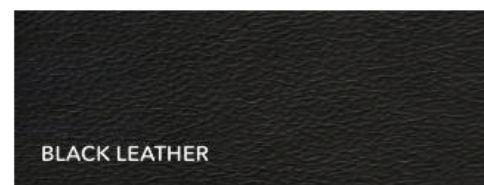
CRYSTAL BLACK PEARL

## INTERIOR LX & EX



LX BLACK FABRIC

## INTERIOR EX-L



BLACK LEATHER



EX BLACK FABRIC

## SPECIFICATIONS

### KEY STANDARD FEATURES FOR ALL FIT MODELS

- 130-hp,<sup>9</sup> direct-injection i-VTEC<sup>®</sup> 4-cylinder engine
- Multi-angle rearview camera<sup>4</sup>
- Bluetooth<sup>®3</sup> HandsFreeLink<sup>®</sup> and streaming audio
- 60/40 split 2nd-row Magic Seat<sup>®</sup>
- Rear spoiler

### TRIM COMBINATIONS

Exterior/Interior Colors	LX
Aegean Blue Metallic	Black
Alabaster Silver Metallic	Black
Crystal Black Pearl	Black
Milano Red	Black
Modern Steel Metallic	Black
Mystic Yellow Pearl	Black
White Orchid Pearl	Black

Exterior/Interior Colors	EX & EX-L
Aegean Blue Metallic	Black
Alabaster Silver Metallic	Black
Crystal Black Pearl	Black
Milano Red	Black
Modern Steel Metallic	Black
Mystic Yellow Pearl	Black
Passion Berry Pearl	Black
White Orchid Pearl	Black



LX



EX



EX-L

### LX

- 130-hp,<sup>9</sup> 1.5-liter direct-injection i-VTEC<sup>®</sup> 4-cylinder engine
- 6-speed manual or continuously variable transmission (CVT) (available)
- Eco coaching
- ECON button (CVT models)
- Six airbags
- Advanced Compatibility Engineering™ (ACE™) body structure
- Vehicle Stability Assist™ (VSA<sup>®</sup>) with traction control
- Tire Pressure Monitoring System (TPMS)<sup>8</sup>
- Multi-reflector halogen headlights with auto-on/off
- Body-colored power side mirrors, including Expanded View Driver's Mirror
- Body-colored rear roofline spoiler
- LED brake lights
- Multi-angle rearview camera<sup>4</sup> with guidelines
- Bluetooth<sup>®3</sup> HandsFreeLink<sup>®</sup>
- Tilt and telescopic steering column
- 12-volt power outlets (front/center console)
- 60/40 split 2nd-row Magic Seat<sup>®</sup>
- 160-watt AM/FM/CD audio system with 4 speakers
- 5-inch color LCD screen
- Bluetooth<sup>®3</sup> streaming audio
- USB Audio Interface<sup>6</sup> (front)
- MP3/auxiliary input jack

### EX adds to or replaces LX features

- Continuously variable transmission (CVT) with dual-mode paddle shifters (available)
- 16-inch alloy wheels
- One-touch power moonroof with tilt feature
- Smart Entry system
- Fog lights
- Multi-angle rearview camera<sup>4</sup> with dynamic guidelines
- Honda LaneWatch™<sup>5</sup>
- SMS text message function<sup>10</sup>
- Push button start
- Floor mats
- 180-watt AM/FM/CD audio system with 6 speakers
- 7-inch Display Audio with high-resolution WVGA (800x480) electrostatic touch-screen and customizable feature settings
- HondaLink<sup>®2</sup> Next Generation
- Pandora<sup>®11</sup> compatibility
- Display Audio Interface<sup>12</sup>
- USB Audio Interface<sup>6</sup> (front and center console)

### EX-L adds to or replaces EX features

- Standard continuously variable transmission (CVT) with dual-mode paddle shifters
- Heated side mirrors with integrated turn indicators
- Leather-wrapped steering wheel and shift knob
- Leather-trimmed seats
- Heated front seats

### EX-L with Navigation adds to or replaces EX-L features

- Honda Satellite-Linked Navigation System™<sup>1</sup> with voice recognition and Honda HD Digital Traffic
- HD Radio™<sup>13</sup>
- SiriusXM<sup>®</sup> Radio<sup>14</sup>

<sup>1</sup>The Honda Satellite-Linked Navigation System™ is available on the EX-L model in the United States, Canada and Puerto Rico. (Honda HD Digital Traffic service only available in the United States, except Alaska.) Please see your Honda dealer for details. <sup>2</sup>Depending on use, HondaLink<sup>®</sup> can transmit to Honda and its providers a vehicle's location, speed and other operating conditions, information that may be tied to the vehicle identification number (VIN) and can be combined to create a track of a vehicle. Check the HondaLink website for smartphone compatibility and access to the Display Audio Interface. For a full explanation of HondaLink functionality and Honda's data use and privacy policy, see <http://owners.honda.com/hondalink>. <sup>3</sup>The Bluetooth<sup>®</sup> word mark and logos are owned by the Bluetooth SIG, Inc., and any use of such marks by Honda Motor Co., Ltd., is under license. <sup>4</sup>Always visually confirm that it is safe to drive before backing up; the rearview camera display does not provide complete information about all conditions and objects at the rear of your vehicle. <sup>5</sup>Display accuracy will vary based on weather, size of object and speed, and the display may not show all relevant traffic. The display is not a substitute for your own direct visual assessment of traffic conditions before changing lanes. <sup>6</sup>The USB Audio Interface is used for direct connection to and control of some current digital audio players and other USB devices that contain MP3, WMA or AAC music files. Some USB devices with security software and digital rights-protected files may not work. Please see your Honda dealer for details. <sup>7</sup>Carrying too much cargo or improperly storing it can affect the handling, stability and operation of this vehicle. Follow applicable load limits and loading guidelines. <sup>8</sup>For optimal tire wear and performance, tire pressure should be checked regularly with a gauge. Do not rely solely on the monitor system. Please see your Honda dealer for details. <sup>9</sup>130 hp @ 6600 rpm (SAE net). <sup>10</sup>Compatible with select phones with Bluetooth<sup>®</sup>. Your wireless carrier's rate plans apply. State or local laws may limit use of texting feature. Only use texting feature when conditions allow you to do so safely. <sup>11</sup>Pandora, the Pandora logo, and the Pandora trade dress are trademarks or registered trademarks of Pandora Media, Inc. Used with permission. Compatible with select smartphones. See: [www.pandora.com/anywhere/mobile](http://www.pandora.com/anywhere/mobile). Not all devices compatible with USB connection. Your wireless carrier's rate plans apply. <sup>12</sup>The Display Audio Interface is used for direct connection to and streaming from some current smartphones. Some smartphones may not work. Please see your Honda dealer for details. <sup>13</sup>HD Radio™ is a proprietary trademark of iBiquity Digital Corporation. <sup>14</sup>SiriusXM services require a subscription after any trial period. If you decide to continue your SiriusXM service at the end of your trial subscription, the plan you choose will automatically renew and bill at then-current rates until you call SiriusXM at 1-866-635-2349 to cancel. See our Customer Agreement for complete terms at [www.siriusxm.com](http://www.siriusxm.com). Fees and programming subject to change. XM satellite service is available only to those at least 18 years and older in the 48 contiguous United States and D.C. ©2015 SiriusXM Radio Inc. Sirius, XM and all related marks and logos are trademarks of SiriusXM Radio Inc. <sup>15</sup>3-Year/36,000-Mile Limited Warranty, 5-Year/60,000-Mile Limited Powertrain Warranty. Ordinary maintenance or adjustments, parts subject to normal wear and replacement, and certain items are excluded. Please see your Honda dealer for the terms and conditions of the limited warranties. <sup>16</sup>NHL and the NHL Shield are registered trademarks of the National Hockey League. ©NHL 2015. All Rights Reserved. <sup>17</sup>The Twitter bird logo and the Stylized V logo are trademarks of Twitter, Inc., or its affiliates. iPhone is a registered trademark of Apple Inc. **Honda reminds you and your passengers to always use seat belts and appropriate child seats. Children 12 and under are safest when properly restrained in the rear seat.** Specifications, features, illustrations and equipment shown in this brochure are based upon latest available information at the time of printing. Although descriptions are believed to be correct, accuracy cannot be guaranteed. American Honda Motor Co., Inc., reserves the right to make changes at any time, without notice or obligation, in colors, specifications, accessories, materials and models. Some features mentioned herein are not available in all areas. Please see your Honda dealer for details. Some vehicles may be shown with optional equipment. Available = Optional. All images contained herein are either owned by American Honda Motor Co., Inc., or used under a valid license. It is a violation of federal law to reproduce these images without express written permission from American Honda Motor Co., Inc., or the individual copyright owner of such images. Honda Financial Services is a DBA of American Honda Finance Corporation. Honda, the H-mark symbol, Honda Care, Honda LaneWatch, HondaLink, Honda Satellite-Linked Navigation System, Advanced Compatibility Engineering, ACE, EarthDreams, Eco Assist, ECON logo, HandsFreeLink, i-VTEC, Magic Seat, SmartVent, Vehicle Stability Assist and VSA are trademarks of Honda Motor Co., Ltd. ©2015 American Honda Motor Co., Inc.



Whether you buy or lease a Honda vehicle, Honda Financial Services can assist you with the process. Please ask your dealer which lease or purchase plan best suits your needs.



Honda Care<sup>®</sup> is an affordable, comprehensive vehicle and travel protection plan backed by Honda reliability, service and parts. Please see your Honda dealer for details.



Manufactured to the same strict standards as Honda vehicles, Honda Genuine Accessories are the perfect way to personalize and protect your vehicle. Please see your Honda dealer for details.

All 2016 Honda vehicles – and any Honda Genuine Accessories installed at the time of vehicle purchase – are covered by a 3-year/36,000-mile limited warranty.<sup>15</sup> Plus, Honda cars and trucks are covered by a 5-year/60,000-mile Limited Powertrain Warranty,<sup>15</sup> too. For more information or assistance, see your Honda dealer or please give us a call at 1-800-33-Honda.

24-hour emergency road service is available to you in the United States, Puerto Rico and Canada throughout your 3-year/36,000-mile limited warranty term, starting with 2015 vehicles. Services include jump-starting, flat tire and lockout assistance, towing, and more (limitations apply). Call 1-866-864-5211.

For more information and complete specifications, go to [fit.honda.com](http://fit.honda.com)



fit.honda.com



Powerful. Agile. Versatile enough to handle almost any condition. It's no wonder Honda is the official vehicle of the NHL.<sup>®16</sup>



Join the millions of other Honda fans and connect with us socially.<sup>17</sup>