

HUMMER[®]

SURVIVAL OF THE FITTEST

Pound for pound, inch for inch, few living things can match the pure brute strength of the grizzly bear. Or the agility of a cougar. The resilience and toughness of a buffalo, or the incredible mobility of the bighorn sheep.

In an environment where only the strong survive, they are models of efficiency, adaptability and fierce refusal to be compromised by a world of glass and concrete.

Through the next few pages, you'll be introduced to another such model: HUMMER. The highest step to date in the evolution of 4-wheel-drive. You'll learn something of how HUMMER is engineered, and why. You'll see what makes HUMMER the toughest off-road vehicle in the world, and why it just might be for you. When you're done, we invite you to step into the cockpit, start the engine...

And feel it.

POWER AND FINESSE



Optional electrically-powered, remote-controlled winch with 12,000-lb. capacity.



Strength and grace: HUMMER fords a 30-inch deep stream.

The 1994 HUMMER is tougher, more powerful and more comfortable than ever before. A new 6.5L naturally aspirated diesel engine boosts power. Plus a new automatic four-speed transmission provides better highway performance, improved fuel economy, and a quieter ride.

Inside the cockpit, the heating and air conditioning systems have been enhanced. Available auxiliary heating and air conditioning provides added comfort in even the most extreme climates. The passenger side seat has been made fully adjustable. There's more rear seat leg room. And cargo space has been increased in the HUMMER wagon with the addition of a removable bulkhead. Other new standard features include: power door locks, 124-amp alternator, EZ Kool® glass that reduces heat build up by 8 degrees, a glove box, one piece wheels and flow-through ventilation. Optional Power windows and remote keyless entry mean added convenience.

All this, and a towing capacity of nearly 9,000 pounds. A payload of 2 tons.

And something else: the uncanny ability to tiptoe through boulders, mud and otherwise unmanageable terrain with the finesse of a sure-footed animal. Unmatched 16-inch ground clearance, wide track stability (72 inches), powerful wheel-end torque, four-wheel independent suspension, and full time 4-wheel drive and an available Central Tire Inflation System that allows the driver to inflate or deflate his tires *on the move* for better traction and mobility make HUMMER the new standard in off-road vehicles.

Go on, feel the power.



BRUTE STRENGTH

At a weight upwards of 1,700 pounds, grizzlies are

said to have run at speeds up to 20 miles per hour.

Fully grown, a grizzly can bring down an opponent

the size of an ox, yet pick a salmon out of a mountain

stream with the skill of a surgeon.

It is this precarious balance between power and

finesse that makes the grizzly bear one of the most

respected and feared animals in the wilderness.



THE STANDARD OF DEXTERITY



HUMMER's agility is legendary.

Designed to the exacting speci-

cations of the U.S. Armed Forces, more than 100,000 HUMMERs have been fielded worldwide since 1985.

One of the secrets of HUMMER's agility lies in its suspension/chassis system. HUMMER's geared hub final drive provides increased torque at each wheel end. This final gear reduction (1.92:1) allows the drivetrain components to be mounted high inside the chassis for maximum protection in rough terrain. And, unlike conventional 4x4's, HUMMER's axle shaft enters the geared hub a full 4-inches above the center of the wheel hub, contributing to HUMMER's exceptional ground clearance: a full 16 inches.

Coupled with its unique traction management differentials and tough 4-wheel independent suspension, HUMMER sometimes seems to defy the laws of gravity.

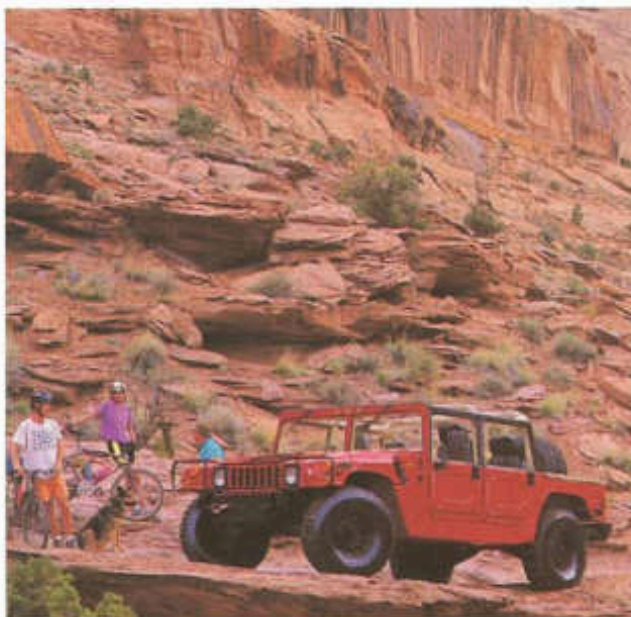
Let HUMMER take you there.



Torque is delivered to HUMMER's geared hubs through axle assemblies equipped with in-board mounted disc brakes, then through halfshafts equipped with constant velocity joints. These components are mounted securely in the chassis between the frame rails for maximum ground clearance and protection.

The power disc brakes provide exceptional stopping power, and because they are in-board mounted, they are less vulnerable to damage in rugged terrain than conventional wheel-mounted components. This unique design means true full-time 4-wheel drive. Because with HUMMER's torque biasing differentials, power is delivered to all four tires even when one or more of them has lost traction.

This is possible through the use of a technique called *brake/throttle modulation*. When one or more tires have lost traction, the driver simply applies brake pressure, then accelerates, effectively locking the differentials and re-distributing power equally to all four tires.



Aided by a 72-degree approach angle and a 37.5-degree departure angle, a fully loaded HUMMER will climb and descend a vertical slope of a least 60 percent. The optional Central Tire Inflation System allows you to deflate your tires from 35 pounds to 10 in just 2 minutes for better mobility and a smoother ride on rough terrain. Then fully inflate them again just as easily. All without leaving the cockpit.



AGILITY

In all the world, there is no sound like the scream

of the cougar.

It is among the most adept hunters in the animal

kingdom, as nimble and certain in a moonless

night as in the glare of high desert sunshine. In

less than the blink of an eye, a cougar can

effortlessly leap in excess of 20 feet.

In mountain country, the cougar is the standard

of dexterity against which all other creatures

are measured.

DESCRIBING AN EXPERIENCE

"If I could, I'd replace our whole fleet with HUMMERS because they get into places a normal 4-wheel drive just can't get into."

- Lt. Kim Adamson
Salt Lake County Sheriff's
Office Search and
Rescue Team

"This truck will carry just about its own weight. And, when you hit the dirt, no vehicle I've ever seen can keep up with it. HUMMER is like doubling my force."

- Gary Dihel, Fire Chief
Salome, Arizona Fire
and Rescue

"When I send people out, I need to know they're going to be safe. In my opinion, HUMMER is the safest, most reliable vehicle built."

- Greg Herman,
Northwest Antennae
Site Services
Portland, Oregon



NCE THAT DEFIES WORDS

"...Because it's so awesome looking, and sturdy, and big on the outside, people have no idea how easy it is to drive. I've never had a problem."

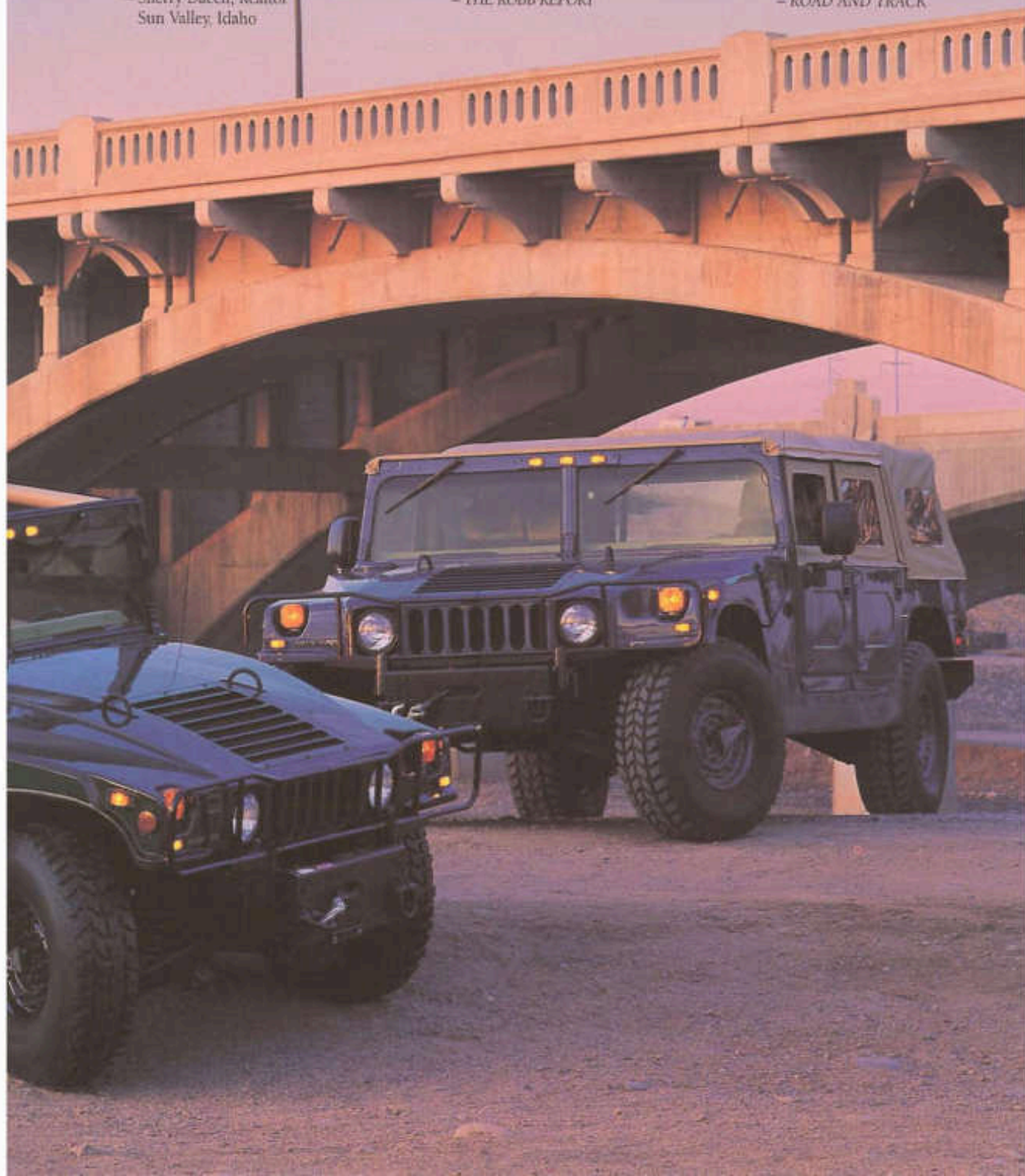
*- Sherry Daech, Realtor
Sun Valley, Idaho*

"The HUMMER goes up and down hills so steep many people would classify them as cliffs. It churns through muck and fords streams so well Moses could have used it to cross the Red Sea without parting the waters."

- THE ROBB REPORT

"...Turn the key, slip it into Drive and pull away. For all its threatening looks and bruiser construction, the HUMMER is as easy to drive as any modern sedan."

- ROAD AND TRACK



NOT TO BE TOYED WITH



UMMER is built tough. And it's built *safe*, meeting or exceeding

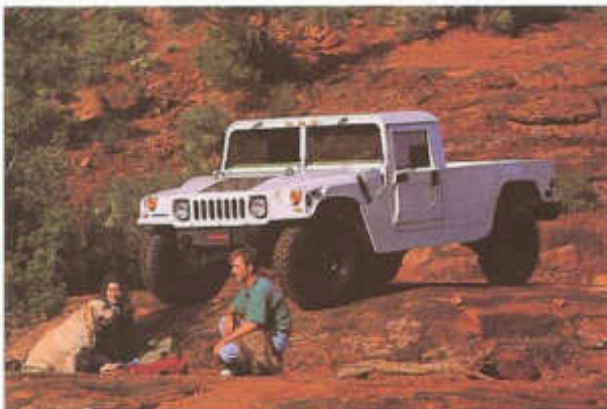
all Federal Motor Vehicle Safety Standards for Class III trucks. Safety features include collapsible steering column, padded dashboard, steel roof and doors with side impact beams, and a 3-point seat belt system. And HUMMER's new interior features make it more comfortable than ever.



If you run a business, chances are you have high standards. So does the U.S. Government. In fact, each HUMMER purchased by the armed forces is expected to last at least 12 years. How many company 4x4's have you replaced in the last decade?



As a work truck, HUMMER is surprisingly easy to drive. Conventional utility vehicles rely heavily on driver ability. But, with power steering, power brakes and automatic transmission, HUMMER does most of the work. So driver fatigue is significantly reduced.



HUMMER re-defines personal freedom and comfort. It also makes a definite statement about its driver.

Even when exposed to the most potentially damaging conditions, HUMMER's aluminum body won't rust or corrode. Optional rocker panel protection, driveline protection, and brush guard help make it even tougher no matter what the terrain.

And one more thing protects you when you drive a HUMMER: a 36-month/36,000-mile bumper to bumper warranty. Of course, your HUMMER can be serviced by any HUMMER dealer worldwide.

Feel it around you.



TOUGHNESS

The buffalo is arguably the toughest living thing

on the face of the earth.

The buffalo is a solitary and generally peaceful

animal. However, it is uniquely adapted to with-

stand incredible levels of confinement, and can

gallop through rough terrain with speed and

sure-footedness that belie its massive size.

A buffalo is not to be toyed with.



THE EMBODIMENT OF MOBILITY

Not even close.



Finishing is winning: Piloted by veteran driver Rod Hall, HUMMER wins the grueling Baja 1000. Hall's son Chad was second for HUMMER.



It moves you: HUMMER muscles through 2 feet of snow.
When you buy your new HUMMER, AM General will enroll you in a free 1-year membership to the TREAD LIGHTLY™ program. Remember, driving on public land is a privilege, not a right. Respect the environment. Obey the law.



The challenge: a day on the Rubicon Trail. Designed and built with pride in Mishawaka, Indiana, U.S.A., HUMMER is American craftsmanship at work. You'll feel that pride and confidence each time you climb into the cockpit.

Baja: Mile after mile of the toughest terrain on earth. The ultimate challenge. And for the first time, HUMMERS were there. When veteran racer Rod Hall and his son Chad came to the 1993 Baja 1000, no one really knew just how serious they were about winning.

Except HUMMER.

Thirteen hours and 33 minutes after the 1993 Baja began, Rod Hall finished first, dominating his class at the world's most grueling off-road race, and proving HUMMER's power, toughness and mobility once again. Hall's son, Chad, finished second—just over an hour later. The competition? Not even close.

One of the keys to victory was CTI (Central Tire Inflation). It meant better mobility and less stress on the vehicle. Better traction and a smoother ride. Said Hall, "I'll never go racing without CTI again."

From hundreds of thousands of grueling miles around the world to the Mexican desert's ultimate test of endurance for man and vehicle, this is HUMMER—the most serious 4x4 on earth.

HUMMER moves you.



MOBILITY

Few sights anywhere are more majestic than that

of a bighorn sheep adroitly balancing on a high

mountain cliff, bounding boulder to boulder, or

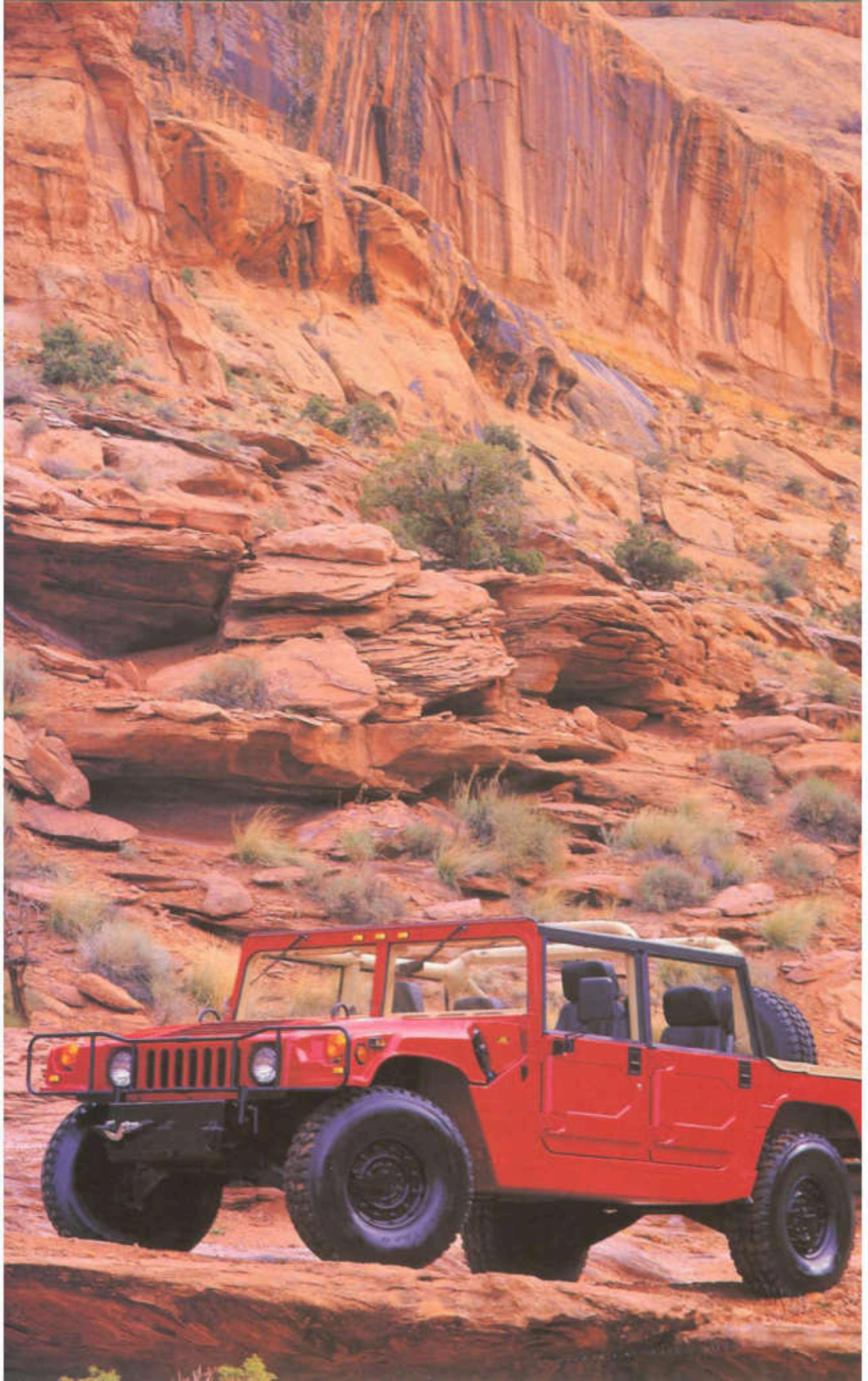
negotiating a crevasse so steep it would put

butterflies in the stomach of even a skilled

mountain climber.

In spite of its size—over 300 pounds—the bighorn

sheep is the embodiment of mobility.



STANDARD EQUIPMENT

- 6.5L Diesel V8, 170 HP
- 4-Sp Automatic Transmission
- 4-Wheel Power Disc Brakes
- Molded Fiberglass Hood
- Geared Hubs
- Heat and Sound Insulation
- Halogen Headlights
- Tonneau Cover (* Passenger Models)
- 124 AMP Alternator
- Serpentine Drive Belt
- Flow-Through Ventilation
- ABS Trim
- Full Time 4-WD System
- Power Steering
- Aluminum Body
- High Back Bucket Seats
- 3-Point Seat Belts
- Padded Interior
- Power Door Locks
- AM/FM Stereo
- One Piece Rims
- Glove Box
- EZ-Kool® Glass

OPTIONAL EQUIPMENT

- Central Tire Inflation System
- Air Conditioning
- Trailer Towing System
- Driveline Protection
- Runflat Tires
- Black Vinyl Seats
- Auxiliary A/C and Heating
- Heavy Duty Rear Bumper
- Power Mirrors
- Sliding Rear Windows
- Remote Keyless Entry
- Driver & Passenger Seat Armrest
- Premium Sound System
- Deluxe Vinyl Trim
- Utility Lighting Package
- Brush Guard
- Two Piece Wheels
- Rocker Panel Protection
- Spare Tire Carrier
- Canvas Cargo Extension
- 12,000 lb. Winch
- Power Windows
- Body Colored Wheels
- Highway Touring Tires
- Carpeted Floor Mats
- Vehicle Recovery Strap*
- Roof Mounted Luggage Rack*

* (Dealer Installed)

COMPONENTS & FEATURES

Engine: Type: V8, 6.5L Diesel Fuel Injection

Horsepower: (@ 3,400 RPM): 170 HP

Torque: (@ 1,700 RPM): 290 lb. ft.

Governor Type: Mechanical

Displacement: 395 cu. in.

Bore and Stroke: 4.06 x 3.82 in.

Compression Ratio: 21.5:1

Fuel Capacity: 25 gallon

Transmission: 4L80-E 4-Speed Automatic with a maximum input torque rating of 440 lb. ft.

Gear Ratios: 1st - 2.48:1, 2nd - 1.48:1, 3rd - 1.00:1, 4th - 0.75:1, Reverse - 2.08:1, Torque Converter Ratio - 2.2:1

Transfer Case: New Venture Gear Model 242. Gear Ratios - Low 2.72:1, High 1:1

Axles: Hypoid with a ratio of 2.73:1, Continuous torque rating is 1,281 lb. ft. AM General Design

Geared Hubs: Gear Ratio - 1.92:1. AM General Design

Frame: Steel Box section with 5 crossmembers

Electrical: 12 Volt 124 AMP - Alternator

Steering: Power assisted with a variable ratio of 13/16:1

Differential: Zexel Torsen® Torque Biasing Differential

Brakes: Hydraulic actuated, four wheel inboard mounted power disc brakes with dual reservoir master cylinder. Rotors are 10.5 in. in diameter with an effective area of 17.4 sq. in each. The parking brake manually activates the rear service brakes

Suspension: Independent double A-frame with open-end coil springs and hydraulic shock absorbers.

Tires: 37x12.50 R16.5 LT load range "D" Goodyear Wrangler MT2A radial with optional beadlock.



Optional Trailer Towing System allows your HUMMER to tow almost 9,000 lbs.



As part of the Central Tire Inflation System, the on-board compressor allows you to inflate or deflate your tires on the move for added traction and a smoother ride in hilly terrain.



A roomy interior with padded high-back seats allow for a more comfortable ride.



Optional Premium Sound Systems and an enhanced heating and air conditioning system add to HUMMER's enjoyment. Auxiliary A/C and heating is also available for added comfort in even the most extreme conditions.

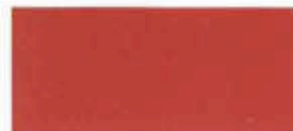


Geared hubs mean better mobility, and heavy-duty springs add to a more comfortable ride.

SPECIFICATIONS & PERFORMANCE DATA

	2 Passenger Hard Top	4 Passenger Hard Top	4 Passenger Open Top	4 Passenger Wagon
Curb Weight (Note 1):	6,100 lbs.	6,600 lbs.	6,200 lbs.	6,500 lbs.
Payload (Notes 1&2):	4,200 lbs.	3,700 lbs.	4,100 lbs.	3,800 lbs.
Gross Vehicle Weight (GVW):	10,300 lbs.	10,300 lbs.	10,300 lbs.	10,300 lbs.
Gross Axle Weight Rating: Front:	4,100 lbs.	4,100 lbs.	4,100 lbs.	4,100 lbs.
Rear:	6,800 lbs.	6,800 lbs.	6,800 lbs.	6,800 lbs.
Maximum Towed Load (Note 3):	9,000 lbs.	8,600 lbs.	8,600 lbs.	8,400 lbs.
Length (Note 1):	184.5 in.	184.5 in.	184.5 in.	184.5 in.
Maximum Height:	75 in.	75 in.	75 in.	75 in.
Width (Without Mirror):	86.5 in.	86.5 in.	86.5 in.	86.5 in.
Ground Clearance:	16 in.	16 in.	16 in.	16 in.
Wheelbase:	130 in.	130 in.	130 in.	130 in.
Track Width:	72.6 in.	72.6 in.	72.6 in.	72.6 in.
Maximum Speed:	83 mph	83 mph	83 mph	83 mph
Typical Acceleration (0 to 60mph):	19.5 sec.	19.5 sec.	19.5 sec.	19.5 sec.
Grade Capability:	60%	60%	60%	60%
Side Slope Capability:	40%	40%	40%	40%
Approach Angle: Without Winch:	72°	72°	72°	72°
With Winch:	47°	47°	47°	47°
Departure Angle:	37.5°	37.5°	37.5°	37.5°
Run flat Capability (At 30 mph)(Note 4):	30 miles	30 miles	30 miles	30 miles
Turning Radius:	26.5 ft.	26.5 ft.	26.5 ft.	26.5 ft.
Fording Depth:	30 in.	30 in.	30 in.	30 in.

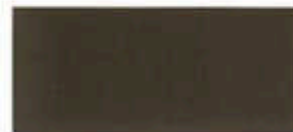
COLORS



High Gloss Red



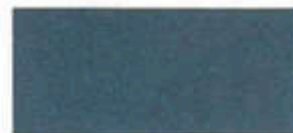
High Gloss White



High Gloss Black



High Gloss Deep Green Metallic



High Gloss Blue



High Gloss Tan



High Gloss Plum



Military Flat Green

VEHICLE MODELS



2 Passenger Hard Top



4 Passenger Hard Top



4 Passenger Open Top



4 Passenger Wagon

NOTES:

1) The above data applies to models without winch and optional accessories. Models with winch are impacted as follows: Payload: Reduce by 137 lbs.; Curb Weight: Increase by 137 lbs.; Length: Increase by 6 in. 2) Payload includes passengers, optional equipment and trailer tongue weight. 3) Gross Combination Weight (GCW) of vehicle and trailer cannot exceed 14,800 lbs. for highway use only. A weight-carrying hitch gives your vehicle the capability to tow a maximum weight of 5,000 lbs. (2,250 Kgs). A weight-distributing hitch with spring bars gives your vehicle the capability to tow a maximum weight of 9,000 lbs. (4,082 Kgs). These are not necessarily weights the vehicle will tow at sustained highway speeds or varying altitudes. NOTE: The maximum allowable weight your vehicle can tow off-road, no matter what type of hitch is being used, is 5,000 lbs. (2,250 Kgs). 4) Optional, for emergency use only, a "get home" capability which will cause tire damage.

Consult your local HUMMER dealer for availability of accessories and current specifications. All specifications are based on latest information available at time of printing. Pictured vehicles may vary slightly from actual production models. Manufacturer reserves the right to change prices, colors, materials, equipment, specifications at any time and without prior notice. Details and specifications may vary according to local regulations and conditions. Some models may not be available at all times in all markets. See dealer for 3-year/36,000-mile warranty details. Copyright AM General, 1994. HUMMER and HUMVEE are registered trademarks of AM General Corporation.

HUMMER®

"It's like nothing I've ever driven."

-John Pendergrast, M.D.
Louisville, Kentucky