

# ACCENT

2016 HYUNDAI



2016 HYUNDAI ACCENT

# SATISFACTION SHOULD BE DEFINED ON YOUR TERMS.

**C**ars are a lot like people – they come in all shapes and sizes. Look at the variety of vehicles we make, and you'll see it ranges from our 7-passenger Santa Fe to our subcompact Accent. The common theme? All have an uncanny ability to perfectly satisfy the demands of their owners.

Specifically, the demand for a well-engineered automobile that blends spirited performance and outstanding fuel efficiency with responsive driving pleasure. For a design so sophisticated, it feels like rolling sculpture. And for safety, comfort and convenience features that offer exceptional value for the money.

Now here's the surprising twist: Accent owners also demand size. They don't want an ordinary subcompact car. Which is why our 5-door Accent is designed with best-in-class cargo room with the seats up. There's also more interior roominess than Ford Fiesta, Mazda 2 and Chevy Sonic 5-door models.<sup>1</sup> It's so roomy, in fact, the EPA – the government agency responsible for classifying cars – moved Accent a class above into the larger compact car segment.

So whether you jump into our 4-door Accent Sedan or 5-door Accent Hatchback, the rewards of cavernous cargo space are yours to do with as you please. And isn't that the real definition of satisfaction, after all?

ACCENT 1.6L GDI

**137** HP **38** EPA-estimated  
MPG highway<sup>2</sup>

<sup>1</sup> Claim based on comparison of specifications on manufacturer websites. <sup>2</sup> EPA estimates with manual transmission for comparison only. Mileage may vary. Your actual mileage will vary with options, driving conditions, driving habits and the vehicle's condition.





ACCENT SPORT in Boston Red / ACCENT SE Style Package in Ironman Silver



ENGINEERED PERFORMANCE

# WE LEFT PLENTY OF ROOM FOR THE IMPORTANT STUFF.

It's easy to engineer substance into a luxury sedan. But putting it into a car the size of Accent? That takes some innovative thinking. Take Gasoline Direct Injection, for example. This technology helps Accent's 137-horsepower 1.6L engine combine powerful performance with remarkable fuel efficiency.

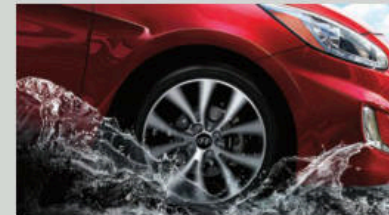
Accent's innovative ideas extend to an available sport steering feature that uses Motor Driven Power Steering to create more responsive feel. And an available SHIFTRONIC<sup>®</sup> automatic transmission that uses Hillstart Assist Control to give you a firmer grip when starting uphill.

Standard safety features include six airbags,<sup>1</sup> active front head restraints, ABS with Brake Assist and Electronic Brake-force Distribution, and Vehicle Stability Management with Electronic Stability and Traction Control Systems.<sup>2</sup> One thing we left out? Noise. The Accent interior is blissfully quiet, thanks to lessons Hyundai engineers learned in making premium sedans like Genesis and Equus.

<sup>1</sup>The Supplemental Restraint System (SRS) is designed to work with the 3-point seatbelt system. The SRS deploys in certain frontal and/or side-impact collisions where significant injury is likely. The SRS is not a substitute for seatbelts, which should be worn at all times. Children under the age of 13 should be restrained securely in the rear seat. NEVER place a rear-facing child seat in the front seat of a vehicle that has a passenger-side airbag. <sup>2</sup>Electronic Stability Control (ESC) cannot control your vehicle's stability under all driving situations. ESC is not a substitute for safe driving practices. No system, no matter how advanced, can overcome physics or correct poor driving. The driver is always responsible for controlling the vehicle and must use caution to avoid loss of control in all driving conditions. Speed, road conditions and driver steering input will affect whether ESC can help prevent loss of control. See Owner's Manual for details. The Traction Control System is meant to enhance conscientious driving habits and is not a substitute for safe driving practices.



**EPA-ESTIMATED 38 MPG HIGHWAY** Accent's 137-horsepower performance eclipses nearly all of its subcompact competition. GDI technology spritzes fuel directly into the cylinder to optimize combustion and help Accent rate an EPA-estimated 38 MPG on the highway. For reliability and durability, this award-winning engine uses a steel timing chain, not a rubber belt. America's Best Warranty helps you breathe as easily as the engine does.



**TRACTION UNDER CONTROL** To help keep you glued to the road, Accent comes standard with some of automotive engineering's most advanced dynamic control technologies. Vehicle Stability Management. Electronic Stability Control. Traction Control System. The feature names may be a mouthful, but they'll put your mind at ease.



**ACTIVE ECO SYSTEM** An available feature called Active ECO helps improve fuel economy. Press a button, and the engine's response favors a more fuel-saving approach. Like the engines in our premium sedans, Accent has Dual Continuously Variable Valve Timing, which creates a precise balance of maximum performance with minimal fuel consumption.



**SIX SPEEDS, YOUR CHOICE** Accent comes standard with a 6-speed manual transmission for a take-charge, high-revving, hands-on approach. Want Accent to do all the work? No problem. The available SHIFTRONIC 6-speed automatic seamlessly selects precisely the right gear for the situation.



ACCENT SPORT in Boston Red

## COMFORT AND CONVENIENCE

# TURN UP THE VOLUME.

We're not talking (at least, not for the moment) about Accent's audio system. Instead, we're talking about its 90.1 cubic feet of interior volume. That's so much room, Accent Hatchback isn't even technically a subcompact. The EPA actually reclassified it within the next segment up – the compact car segment.

And here's the best part. We filled Accent's tastefully designed interior with as much stuff as we possibly could. You'll enjoy thoughtful conveniences like dual front cupholders, overhead sunglass storage and a one-touch triple turn signal. All standard. Also available: Popular options like steering wheel controls for the audio system and cruise control. Now that's how you turn up the volume.



**CLASS-LEADING ROOM** Accent Hatchback offers an exceptional amount of cargo space. Even with the 2nd-row seats up, there's a refrigerator-esque 21.2 cubic feet available. That's more than Toyota Yaris, Nissan Versa or Mazda 3 5-Door. It's even more than the Nissan Juke compact SUV.<sup>2</sup> And there's up to 47.5 cubic feet of cargo space with the seats down.



**A PLACE FOR EVERYTHING** Accent functions like a bigger car. Our engineers studied what you carry around with you – from sunglasses and gloves to your morning cup of coffee and all the mobile devices du jour. Then, they crafted the interior for you to put everything in its place.



**60/40 SPLIT REAR SEATING** When you need to carry more cargo than you do passengers, Accent quickly converts its rear seating area. The rear seatback is split 60/40, so you have the versatility to configure the cargo area to handle whatever's in your weekday or weekend plans.



**STYLE PACKAGE** This aptly named array of options elevates Accent SE Sedan's pleasure factor even further with features like a leather-wrapped steering wheel and shift knob. Premium cloth seats. Projector headlights with LED accents, a headlight welcome/escort function, and more.

<sup>1</sup> Cargo volume measured with rear seats up. Class comparison versus 2015 Ford Fiesta Hatchback, Mazda2, Honda Fit, Chevrolet Sonic Hatchback, Nissan Versa Note, Toyota Yaris 3-Door and 5-Door models. <sup>2</sup> Claim based on comparison of specifications on manufacturer websites.



ACCENT SPORT in Premium Black Cloth

## TECHNOLOGY AND DESIGN

# PUTTING THE ACCENT ON YOU.

When you settle in behind the steering wheel of your next car, what will that feel like? If it's a Hyundai Accent, we think you'll feel like you're the center of attention.

It starts with a steering wheel that provides a clear sense you're in command here – over the road in front of you, and the technology that surrounds you. Switches at your fingertips let you change radio stations, turn up the volume, or engage cruise control without ever taking your hands off the wheel.

Another steering wheel-mounted control activates the available Bluetooth® hands-free phone system. It uses voice recognition that allows you to easily communicate with your friends without ever reaching for your phone. If you're driving an Accent Sport or Accent SE Sedan equipped with the Style Package, you can also enjoy a leather-wrapped steering wheel and shift knob that enhances your driving comfort, confidence and control. After all, it's all about you.

<sup>1</sup> SiriusXM Satellite Radio and SiriusXM Travel Link each require a subscription sold separately, or as a package, by Sirius XM Radio Inc. If you decide to continue service after your trial, the subscription plan you choose will automatically renew thereafter, and you will be charged according to your chosen payment method at then-current rates. Fees and taxes apply. To cancel, call us at 1-866-635-2349. See our Customer Agreement for complete terms at [siriusxm.com](http://siriusxm.com). All fees and programming subject to change. ©2015 Sirius XM Radio Inc. Sirius, XM and all related marks and logos are trademarks of Sirius XM Radio Inc.



**BLUETOOTH TECHNOLOGY** Accent offers you the convenience of an available Bluetooth hands-free phone system. Simple voice commands let you easily initiate calls or reply to text messages. And with Bluetooth, there's a bonus: You can stream music from your smartphone and revel in Accent's audio system.



**SIRIUSXM SATELLITE RADIO** Accent's 6-speaker audio system comes with SiriusXM® Satellite Radio integration. No matter what flavor is your favorite – from talk and sports to comedy and every conceivable music genre – available SiriusXM programming lets you hear it with power and clarity.<sup>1</sup>



**SIX-SPEAKER AUDIO SYSTEM** We know how much music matters to you. That's why Accent comes standard with an audio system and six expertly placed speakers. Standard USB and auxiliary input jacks, along with available SiriusXM Satellite Radio, let you listen to more of your favorite music, loud and clear.



**PROJECTOR HEADLIGHTS WITH LEDs** On Accent Sport, you get the functional power and stylish pizzazz of projector beam headlights with LED accents. That's right, accents come standard on this Accent. And they're available as an option on our SE Sedan.

## EXTERIOR COLORS



Century White

Ironman Silver

Triathlon Gray

Ultra Black

Boston Red

Misty Beige

Pacific Blue

Vitamin C

## INTERIOR COLORS

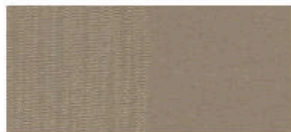
Beige Cloth – Sedan Only



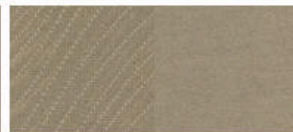
Gray Cloth



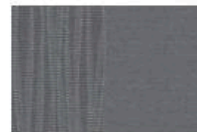
Black Cloth – Hatchback Only



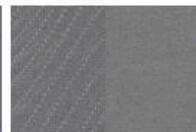
Base



Premium



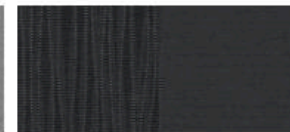
Base



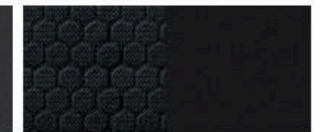
Premium  
Sedan pattern



Premium  
Hatchback pattern



Base



Premium

## WHEELS



14" Wheel Cover



16" Alloy Wheel

## EXPRESSIVE DESIGN FEATURES



Available Projector Headlights  
with LED Accents and Fog Lights



Rear Combination Taillights  
Sedan



Rear Combination Taillights  
Hatchback

## 2016 ACCENT SE SEDAN

### KEY STANDARD FEATURES

- 137 hp, 1.6L Gasoline Direct Injection 4-cylinder engine with Dual Continuously Variable Valve Timing
- 6-speed manual or available 6-speed SHIFTRONIC® automatic transmission with Active ECO system and Hillstart Assist Control
- Tilt steering wheel and 6-way adjustable driver seat including height adjustment
- One-touch triple turn signal
- Exterior temperature display
- AM/FM/SiriusXM®/CD/MP3 audio with hi-contrast LCD illumination
- iPod®/USB auxiliary input jacks
- 60/40 split fold-down rear seatback
- Active front head restraints and adjustable head restraints for all seating positions
- 6-airbag safety: Front, side and head curtain airbags with Occupant Classification System
- Vehicle Stability Management and Electronic Stability Control with Traction Control System
- Anti-lock Braking System with Electronic Brake-force Distribution and Brake Assist
- 14" steel wheels with full wheel covers
- Remote keyless entry with panic alert
- Driver seat armrest
- Cabin air filter

### POPULAR EQUIPMENT PACKAGE

#### SE Automatic Equipment plus:

- + Tilt-and-telescopic steering wheel
- + Steering wheel audio and cruise controls
- + Bluetooth® hands-free phone integration with voice recognition and audio streaming
- + Sliding armrest storage box
- + Heated side mirrors with driver's blind spot mirror

### STYLE PACKAGE

#### Popular Equipment Package plus:

- + Premium cloth seats
- + Leather-wrapped steering wheel and shift knob
- + Chrome inside door handles
- + Piano Black interior accents
- + Driver's auto-up window
- + Front fog lights
- + Projector headlights with LED accents
- + Headlight welcome and escort feature
- + 16" alloy wheels
- + Rear disc brakes

## 2016 ACCENT SE HATCHBACK

### KEY STANDARD FEATURES

- 137 hp, 1.6L Gasoline Direct Injection 4-cylinder engine with Dual Continuously Variable Valve Timing
- 6-speed manual or available 6-speed SHIFTRONIC® automatic transmission with Active ECO system and Hillstart Assist Control
- Cruise control (A/T only)
- Motor Driven Power Steering
- Engine cover and hood insulator
- Remote keyless entry with panic alert
- Air conditioning
- Cabin air filter
- Tilt steering wheel and 6-way adjustable driver seat
- One-touch triple turn signal
- Sliding sunvisors with vanity mirrors
- Driver seat armrest
- Cloth door insert
- Front-door map pockets
- Front-passenger seatback pocket
- Exterior temperature display
- Trip computer
- AM/FM/SiriusXM®/CD/MP3 audio with hi-contrast LCD illumination
- iPod®/USB auxiliary input jacks
- 60/40 split fold-down rear seatback
- Active front head restraints and adjustable head restraints for all seating positions
- Front seatbelt pretensioner
- 6-airbag safety: Front, side and head curtain airbags with Occupant Classification System
- Vehicle Stability Management and Electronic Stability Control with Traction Control System
- Anti-lock Braking System with Electronic Brake-force Distribution and Brake Assist
- Driver's blind spot mirror
- Heated bodycolor power side mirrors
- 14" steel wheels with full wheel covers



"If you want a good-looking, fuel-efficient small sedan or hatchback that's easy on budgets and offers a long warranty for peace of mind, the 2015 Hyundai Accent checks all the right boxes."

- From "2015 Hyundai Accent Expert Review" on Kelley Blue Book's kbb.com.  
Kelley Blue Book is a registered trademark of Kelley Blue Book Co., Inc.

## 2016 ACCENT SPORT

### KEY STANDARD FEATURES

#### SE Hatchback Equipment plus:

- + Premium cloth seats
- + Chrome inside door handles
- + Piano Black interior accents
- + Sport-tuned steering
- + Leather-wrapped steering wheel and shift knob
- + Tilt-and-telescopic steering wheel
- + Steering-wheel audio and cruise controls
- + Driver's auto-up window
- + Bluetooth® hands-free phone integration with voice recognition and audio streaming
- + Sliding armrest storage box
- + Front fog lights
- + Projector headlights with LED accents
- + Headlight welcome and escort feature
- + Side mirrors with integrated turn signals
- + Rear spoiler
- + Rear disc brakes
- + 16" alloy wheels

### PERFORMANCE

- Engine \_\_\_\_\_ 1.6L GDI 4-cylinder
- Horsepower/Torque (M/T) \_\_\_\_\_ 137 hp/123 lb-ft

### EPA MILEAGE ESTIMATES (CITY/ HIGHWAY/ COMBINED)

- 1.6L GDI (M/T) \_\_\_\_\_ 27/38/31 MPG
- 1.6L GDI (A/T) \_\_\_\_\_ 26/37/30 MPG

### EXTERIOR DIMENSIONS (HATCHBACK)

- Wheelbase \_\_\_\_\_ 101.2 in
- Overall Length \_\_\_\_\_ 162.0 in
- Overall Width, excluding mirrors \_\_\_\_\_ 66.9 in
- Overall Height \_\_\_\_\_ 57.1 in
- Tread Width, front/rear 14" wheels \_\_\_\_\_ 59.3/59.5 in
- Tread Width, front/rear 16" wheels \_\_\_\_\_ 58.6/58.8 in
- Coefficient of Drag \_\_\_\_\_ 0.28 Cd

### INTERIOR DIMENSIONS (HATCHBACK)

- Head Room, front/rear \_\_\_\_\_ 39.9/37.8 in
- Leg Room, front/rear \_\_\_\_\_ 41.8/33.3 in
- Shoulder Room, front/rear \_\_\_\_\_ 53.7/53.4 in
- Hip Room, front/rear \_\_\_\_\_ 51.3/47.2 in
- Cargo Volume, rear seats up \_\_\_\_\_ 21.2 cu ft
- Cargo Volume, rear seats down \_\_\_\_\_ 47.5 cu ft
- Passenger Volume \_\_\_\_\_ 90.1 cu ft
- Total Interior Volume \_\_\_\_\_ 111.3 cu ft

### EXTERIOR DIMENSIONS (SEDAN)

- Wheelbase \_\_\_\_\_ 101.2 in
- Overall Length \_\_\_\_\_ 172.0 in
- Overall Width, excluding mirrors \_\_\_\_\_ 66.9 in
- Overall Height \_\_\_\_\_ 57.1 in
- Tread Width, front/rear 14" wheels \_\_\_\_\_ 59.3/59.5 in
- Tread Width, front/rear 16" wheels \_\_\_\_\_ 58.6/58.8 in
- Coefficient of Drag \_\_\_\_\_ 0.28 Cd

### INTERIOR DIMENSIONS (SEDAN)

- Head Room, front/rear \_\_\_\_\_ 39.9/37.2 in
- Leg Room, front/rear \_\_\_\_\_ 41.8/33.3 in
- Shoulder Room, front/rear \_\_\_\_\_ 53.7/53.4 in
- Hip Room, front/rear \_\_\_\_\_ 51.3/47.2 in
- Cargo Volume, rear seats up \_\_\_\_\_ 13.7 cu ft
- Passenger Volume \_\_\_\_\_ 89.7 cu ft
- Total Interior Volume \_\_\_\_\_ 103.4 cu ft

HYUNDAI  
**Assurance**  
HYUNDAIASSURANCE.COM

Our commitment to Hyundai owners doesn't end with the transfer of keys. Wherever the road takes you, we've got your back with Hyundai Assurance, an umbrella of services and benefits that includes America's Best Warranty, 24/7 Roadside Assistance, innovative safety and car care features...and more.



## AMERICA'S BEST WARRANTY

POWERTRAIN LIMITED WARRANTY

**10 YEARS 100,000 MILES**

NEW VEHICLE LIMITED WARRANTY

**5 YEARS 60,000 MILES**

ANTI-PERFORATION WARRANTY

**7 YEARS UNLIMITED MILES**

24/7 ROADSIDE ASSISTANCE

**5 YEARS UNLIMITED MILES**

See dealer for LIMITED WARRANTY details. Fuel economy estimated by EPA for comparison only. Mileage may vary. While the information contained in this brochure was correct at the time of printing, specifications and equipment can change. Feature comparisons based on competitor information available at the time of printing. No warranty or guarantee is being extended in this brochure, and Hyundai reserves the right to change product specifications and equipment at any time without incurring obligations. Some vehicles are shown with optional equipment. Specifications apply to U.S. vehicles only. Please contact your Hyundai dealer for current vehicle specifications. As part of Hyundai's commitment to a responsible environment, this brochure was printed using paper certified by the Forest Stewardship Council.<sup>®</sup> FSC<sup>®</sup> certification helps ensure that the highest social and environmental standards are met in the making of the paper we use, contributing to conservation, responsible management, and community-level benefits for people near the forests.

