

2022

ACCENT





The compact sedan that thinks big.

ACCENT Limited in Olympus Silver

We made our award-winning Hyundai Accent big on the inside, so it's the roomy, quiet and comfortable sedan you crave. A compact footprint also makes it agile maneuvering through traffic and easy to park in tight spots.

But our designers also made sure Accent was big on style. With its cascading chrome grille, available 17" alloy wheels and wraparound headlights and taillights, Accent has the upscale look of a larger luxury sedan. Inside, it welcomes you with Apple CarPlay®, Android Auto™ and Hyundai Bluelink® – all available to turn your smartphone into a powerful point of contact with your vehicle.¹

With Accent Limited, heated front seats offer warmth on frosty mornings. Automatic temperature control maintains your preferred cabin climate, while fingertip controls let you quickly set your preferred positions for the heated side mirrors and leather-wrapped steering wheel.

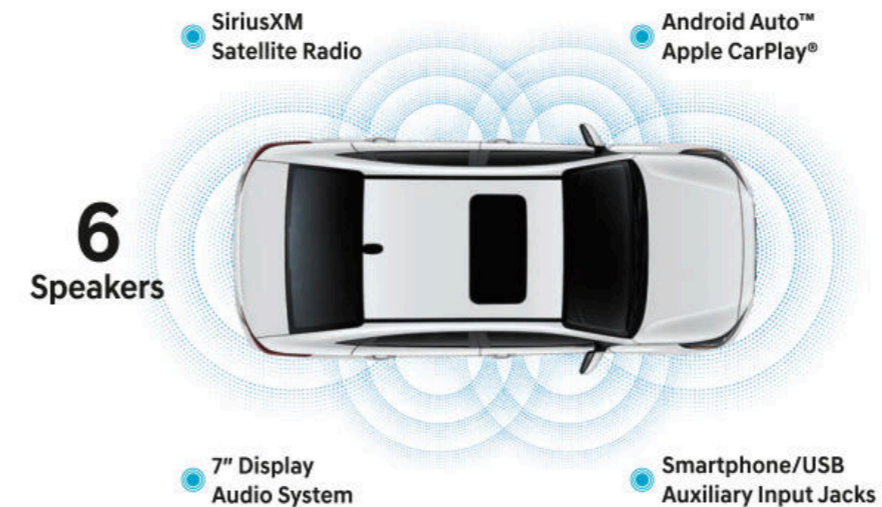
Now look up – that's a power sunroof overhead. Hyundai's got your back, too, with America's Best Warranty and Hyundai Complimentary Maintenance for the first three years.² Given all it has to offer, it's no wonder *U.S. News & World Report* named the 2021 Accent the Best Car for the Money in its class.³

It completes you.

What makes Accent the perfect partner? It's filled with comfort and convenience features that make it stand out from other cars in its class. Compare Accent Limited to its competitors, and you'll appreciate the difference the moment you approach the car: A Proximity Key lets you unlock the door without fumbling through your pockets or purse.

Approaching your trunk with an armful of shopping bags? Accent Limited features a hands-free smart trunk. It senses your Proximity Key and automatically pops the trunk release for easy access to a cargo area that swallows up to six carry-on-sized suitcases.⁴ Accent's 60/40 split-folding rear seats also give you the flexibility to carry oversized cargo.

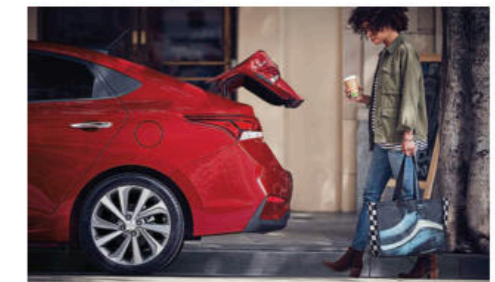
Fingertip controls on Accent's available tilt-and-telescopic steering wheel let you adjust audio and cruise control settings, or make calls using the car's Bluetooth® hands-free phone system. Keeping your smartphone and other devices powered is easy, too – Accent comes standard with convenient front and available rear USB charge ports.



Front USB charge port



60/40 split-folding rear seats



Hands-free smart trunk release



Automatic temperature control

¹Apple CarPlay® is a registered trademark of Apple Inc. Android Auto™ is compatible with Android™ phones running Android 5.0 or higher. Android Auto may not be available on all devices and is not available in all countries or regions. Additional apps may be required. Android and Android Auto are trademarks of Google LLC. ²Based on total package of warranty programs. See dealer for LIMITED WARRANTY details and refer to back cover of this brochure for details on Hyundai Complimentary Maintenance. ³For details, visit cars.usnews.com/cars-money. ⁴The smart trunk will open when your Proximity Key is within 3 feet of the detection area for at least 3 seconds. Radio transmitters and other vehicle smart keys may interfere with the normal operation of this feature. See Owner's Manual for further details and limitations. Always close the trunk before operating your vehicle.



U.S. News & World Report named the 2021 Accent one of its Best Cars for the Money

ACCENT Limited in Pomegranate Red

It even drives like a dream.

The secret to why people love the way Accent drives lies beneath its stylish exterior – a chassis forged with advanced high-strength steel. This gives Accent what our engineers call torsional rigidity, or a resistance to twisting forces. When you take your test drive, listen to how quiet – and feel how calm – Accent is over rough roads. And be sure to note the steering precision in corners, too. It's a smooth, substantial driving feel – the kind you'd expect could only be found in larger, more expensive sedans.

The use of high-strength steel also helps enhance the ability of Accent to withstand impact forces in a collision. Of course, our hope is that you never have an accident in the first place. Which is why Accent Limited comes equipped with sophisticated safety assist technologies like Forward Collision-Avoidance Assist.¹

Accent is also the only car in its class available with 4-wheel disc brakes.² Press the brake pedal, and it responds with swift, sure stopping power. Press the gas pedal, and you'll feel the quick acceleration of a spirited 1.6L 4-cylinder engine and proprietary Smartstream Intelligent Variable Transmission. You'll see advantages at the gas pump, too – Accent has an EPA-estimated 41 MPG highway rating.³

Accent Safety Technologies⁴



¹ Forward Collision-Avoidance Assist (FCA) is designed to assist drivers to help avoid, or reduce the severity of, collisions with cars that have slowed or stopped in front of them. It is a supplemental assist and does not replace the need for extreme care and attention by the driver. FCA may not stop the vehicle completely and will not avoid all collisions. See Owner's Manual for details and limitations. ² Claim based on comparison of specifications on manufacturer websites at the time of printing. ³ EPA estimate with automatic transmission for comparison only. Your actual mileage will vary with options, driving conditions, driving habits and the vehicle's condition. ⁴ Standard and available safety features vary by model and trim level. Refer to the Features section in the back of this brochure or visit HyundaiUSA.com for details.



Vehicle Stability Management



Rearview camera with dynamic guidelines



LED headlights and Daytime Running Lights

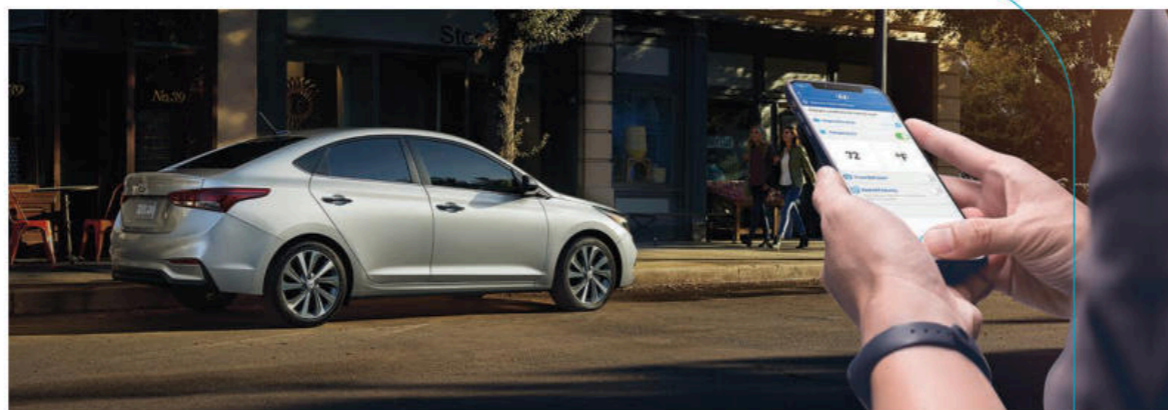
Technology that works like magic.

Thankfully, there's no trick to enjoying all of the innovations available with Accent. In fact, it's easy. Apple CarPlay® and Android Auto™ pair your compatible smartphone with Accent's 7" touchscreen display – standard on SEL and Limited. Using the car's touchscreen or voice commands, you can access your phone's music, messages, navigation and more.

With the MyHyundai app, life between your home, your workplace and your Accent Limited is seamless. That's the power of Hyundai BlueLink™ technology! While you're preparing to leave, BlueLink lets you remotely start Accent Limited's engine and warm or cool its interior using your compatible smartphone, smartwatch or Amazon Echo®/Google Home™ device.²

Then there's BlueLink Connected Care. Free for your first three years of ownership, it offers Monthly Vehicle Health Reports, Enhanced Roadside Assistance, 24/7 SOS Emergency Assistance and Automatic Collision Notification that calls for help if you've been in an accident where an airbag has deployed.³

BlueLink



Automatic Emergency Assistance

BlueLink Connected Care offers 24/7 SOS Emergency Assistance as well as Automatic Collision Notification that calls for help if you're in an accident where an airbag is deployed.



On-Demand Diagnostics

Run vehicle diagnostics from your MyHyundai mobile app, report issues at the press of a button and receive maintenance reminders or Monthly Vehicle Health Reports by email.



Hyundai Car Finder

Our Car Finder smartphone app feature helps you find your way back to your vehicle after a day of downtown shopping or an evening spent rooting for your favorite team.



Remote Vehicle Controls

Use your smartphone, home assistant or wearable device to remotely start your Accent Limited's engine, unlock the car doors, set the car's cabin temperature and more.



Safeguard Alerts

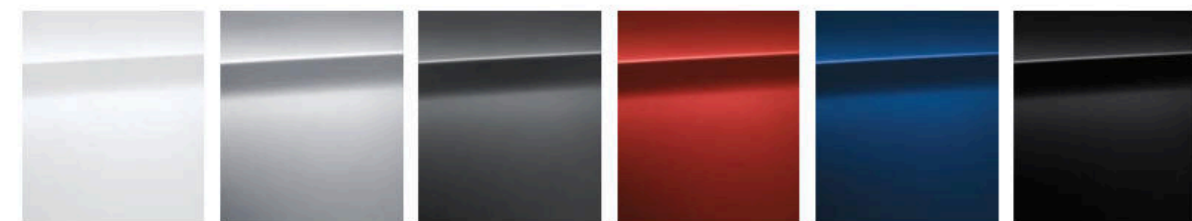
Proud parent of a teen driver? Hyundai BlueLink lets you set curfew, geofence and speed alerts so you can relax when loved ones are on the road.



Hyundai Service Link

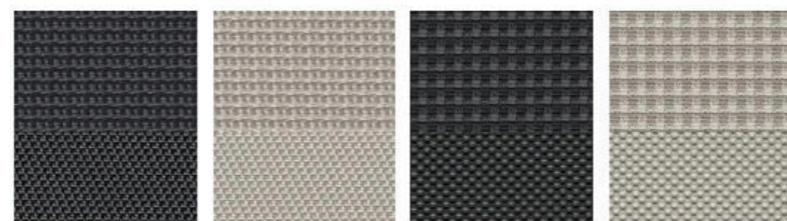
Conveniently schedule your car for service from the driver seat of your Accent Limited, or with a few taps in your MyHyundai smartphone app.

Exterior Colors



Frost White Pearl Olympus Silver Forge Gray Pomegranate Red Admiral Blue Absolute Black

Interior Colors



SE / SEL Black Cloth SE / SEL Beige Cloth Limited Black Cloth Limited Beige Cloth

¹Standard on Accent Limited only. BlueLink Connected Care and Remote packages are complimentary for the first 3 years of ownership and require an active BlueLink subscription agreement subject to the Connected Services Terms and Conditions. Three-year term starts from the new vehicle date-of-first-use, is available for new vehicle purchases and leases, and is transferable to subsequent owners subject to the Terms and Conditions. Only use BlueLink and corresponding devices when it is safe to do so. Cellular and GPS coverage is required. Features, specifications and fees are subject to change. For more on details and limitations, visit HyundaiUSA.com or your authorized Hyundai dealer. ²Requires Accent Limited with active BlueLink subscription and Remote package. Remote stop only available when in remote start mode. Amazon, Alexa and all related logos and motion marks are trademarks of Amazon.com, Inc. or its affiliates. Google Assistant and Google Home are trademarks of Google Inc. ³BlueLink agents will contact existing emergency service responders.

ACCENT SE

Smartstream 1.6L
DPI 4-Cylinder Engine

hp 120 lb-ft 113



Popular Features	
5" touchscreen Display Audio system	Bluetooth® hands-free phone system
Rearview camera w/ dynamic guidelines	Remote keyless entry w/ immobilizer
Steering wheel audio & cruise controls	60/40 split-folding rear seats

ACCENT SEL

Smartstream 1.6L
DPI 4-Cylinder Engine

hp 120 lb-ft 113



Popular Features	
7" touchscreen Display Audio system	Apple CarPlay®/Android Auto™
Front & rear USB charge ports	Tilt-and-telescopic steering wheel
Automatic on/off headlights	Heated bodycolor side mirrors

ACCENT Limited

Smartstream 1.6L
DPI 4-Cylinder Engine

hp 120 lb-ft 113



Popular Features	
Proximity Key with push button start	Forward Collision-Avoidance Assist
Heated front seats	BlueLink® Connected Car System
Automatic temperature control	Hands-free smart trunk release
LED headlights and taillights	Power tilt-and-slide sunroof

Wheels



SE 15" Steel Wheel SEL 15" Alloy Wheel Limited 17" Alloy Wheel

ACCENT

Power & Handling	SE	SEL	Ltd
120 hp/113 lb-ft, Smartstream 1.6L Dual Port Injection 4-cylinder engine	•	•	•
Smartstream Intelligent Variable Transmission (IVT) with SHIFTRONIC®	•	•	•
Ventilated front disc brakes	•	•	•
Rear disc brakes	–	•	•
Motor Driven Power Steering	•	•	•
Exterior Features	SE	SEL	Ltd
Automatic on/off headlights	–	•	•
LED headlights and LED taillights	–	–	•
LED Daytime Running Lights	–	–	•
Front foglights	–	•	•
Power tilt-and-slide sunroof	–	–	•
Bodycolor door handles	•	•	–
Chrome door handles	–	–	•
Chrome lower side-window surround	–	•	•
Power windows	•	•	•
Power bodycolor side mirrors	•	•	•
Side mirrors with turn signal indicators	–	–	•
Heated side mirrors with driver blind spot mirror	–	•	•
Hands-free smart trunk release	–	–	•
Intermittent windshield wipers	•	•	•
Rear window defroster with timer	•	•	•
Interior Features	SE	SEL	Ltd
Remote keyless entry system with alarm	•	•	–
Proximity Key entry with push button start	–	–	•
3.5" multi-information display	–	–	•
Tilt steering wheel	•	–	–
Tilt-and-telescopic steering wheel	–	•	•
Steering wheel audio and cruise controls	•	•	•
One-touch triple turn signal	•	•	•
Leather-wrapped steering wheel and shift knob	–	–	•
Automatic temperature control	–	–	•
Cabin air filter	•	•	•
Auto-defogging windshield	–	–	•
Heated front seats	–	–	•
6-way adjustable driver seat including height adjustment	•	•	•
Cloth seating surfaces and door inserts	•	•	•
60/40 split-folding rear seats	•	•	•

Interior Features	SE	SEL	Ltd
Driver's auto-up window	–	•	•
Sliding sunvisors with dual vanity mirrors	•	•	•
Center console storage with sliding armrest	–	•	•
Rearview camera with dynamic guidelines	•	•	•
Advanced Safety	SE	SEL	Ltd
Forward Collision-Avoidance Assist	–	–	•
Vehicle Stability Management	•	•	•
Electronic Stability Control with Traction Control System	•	•	•
ABS with Electronic Brake-force Distribution and Brake Assist	•	•	•
Hillstart Assist Control	•	•	•
Audio & Connected Car Technology	SE	SEL	Ltd
5" color touchscreen AM/FM audio system	•	–	–
7" color touchscreen AM/FM/MP3/SiriusXM Display Audio system with 6 speakers	–	•	•
Bluetooth® hands-free phone system	•	•	•
Front and rear USB charge ports	–	•	•
Smartphone/USB and MP3 auxiliary input jacks	•	•	•
Apple CarPlay® and Android Auto™	–	•	•
BlueLink® Connected Car System (3 years complimentary)	–	–	•

• Standard – Not Available Ltd = Limited Trim

Exterior Dimensions	ACCENT
Wheelbase	101.6 in
Overall Length	172.6 in
Overall Width (excludes mirrors)	68.1 in
Overall Height	57.1 in

Interior Dimensions	ACCENT
Headroom – front / rear	38.9 / 37.3 in
Legroom – front / rear	42.1 / 33.5 in
Total Interior Volume	103.9 cu ft
Cargo (Trunk) Volume	13.7 cu ft

EPA Estimates (City/Highway/Combined)¹

33/41/36 MPG | Smartstream Intelligent Variable Transmission

¹EPA estimates for comparison only. Mileage may vary. Your actual mileage will vary with options, driving conditions, driving habits and the vehicle's condition.



Hyundai Hope On Wheels®

Helping Kids Fight Cancer Since 1998



Hope makes every Hyundai better.

Each time we sell a Hyundai, a portion goes to Hyundai Hope On Wheels® to help find a cure for childhood cancer. Over the last 23 years, Hyundai Hope On Wheels has donated more than \$185 million. Hope is our greatest feature. And it comes standard on every Hyundai. For more information, please visit HyundaiHopeOnWheels.org.



America's Best Warranty

POWERTRAIN LIMITED WARRANTY

10 YEARS 100,000 MILES

NEW VEHICLE LIMITED WARRANTY

5 YEARS 60,000 MILES

ANTI-PERFORATION WARRANTY

7 YEARS UNLIMITED MILES

24/7 ROADSIDE ASSISTANCE

5 YEARS UNLIMITED MILES



Hyundai Complimentary Maintenance

Complimentary maintenance includes Hyundai-approved oil and oil filter change (except for electric vehicles and fuel cell electric vehicles) plus tire rotation at normal factory-scheduled maintenance intervals for 3 years or 36,000 miles, whichever comes first. More frequent maintenance due to severe driving or conditions is excluded. This offer is valid only for new 2020-2022 Hyundai models purchased or leased on or after February 1, 2020. See your Hyundai dealer for further details and limitations.



Owner Assurance

Our commitment to Hyundai owners does not end with the transfer of keys. Wherever the road takes you, we've got your back with Owner Assurance, an umbrella of services and benefits that includes America's Best Warranty, 24/7 Roadside Assistance, innovative safety and car care features...and more.

See dealer for LIMITED WARRANTY details. Fuel economy estimated by EPA for comparison only. Mileage may vary. While the information contained in this brochure was correct at the time of printing, specifications and equipment can change. Feature comparisons based on competitor information available at the time of printing. No warranty or guarantee is being extended in this brochure, and Hyundai reserves the right to change product specifications and equipment at any time without incurring obligations. Some vehicles are shown with optional equipment. Specifications apply to U.S. vehicles only. Please contact your Hyundai dealer for current vehicle specifications. As part of Hyundai's commitment to a responsible environment, this brochure was printed using paper certified by the Forest Stewardship Council®. FSC® certification helps ensure that the highest social and environmental standards are met in the making of the paper we use, contributing to conservation, responsible management and community-level benefits for people near the forests.



©2021 HYUNDAI NP020Q2022