

ELANTRA

2019 Hyundai





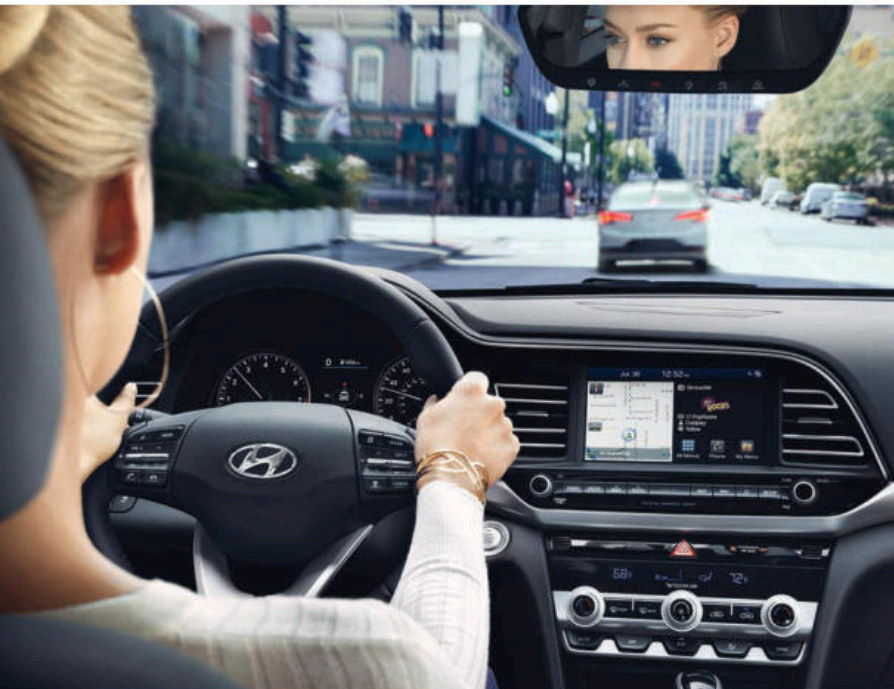
How many followers does Elantra have? It practically has celebrity status.

Now in its sixth generation, Hyundai Elantra has been among the most popular cars in its class, year after year. Since 1991, more than 3 million people have chosen an Elantra as their first or next car.

What's made Elantra so popular? Probably the same things that make anyone popular. For starters, it's good looking. Elantra's designers created a striking new take on Hyundai's Fluidic Sculpture styling for 2019, distinguished by the available LED headlights and taillights. Elantra is fun to be around, too. Its airy interior is modern and inviting, with premium features, intuitive control layouts and class-above spaciousness.

Elantra's intelligence is readily apparent in the availability of a suite of Blue Link[®] connected car tools.¹ Complimentary for the first three years of ownership, they include a smartphone app that lets you interact with your vehicle in powerful and practical ways. For 2019, a wireless charging pad is also available to power your smartphone. Even Elantra's trunk is smart – it recognizes when you're standing nearby and pops open automatically without you ever lifting a hand.²

Elantra is self-assured, too. Advanced safety technologies like Forward Collision-Avoidance Assist and Rear Cross-Traffic Collision Warning are standard on all Elantra models except the base SE trim. All of this, together with America's Best Warranty, makes it easy to see why the Brand Keys Customer Loyalty Engagement Index[®] ranked Hyundai No. 1 in customer loyalty – for the ninth consecutive year.³



Hyundai has the lowest 5-Year Cost to Own of all brands for 2018 according to Kelley Blue Book's KBB.com, highlighting our industry-leading ownership value.⁴



¹Blue Link is complimentary for the first 3 years of ownership and requires an active Blue Link subscription. Three-year term starts from the new vehicle date of first use and is available for new vehicle purchases and leases based upon terms and conditions on the Blue Link subscription enrollment pages. Only use Blue Link and corresponding devices when it is safe to do so. Cellular and GPS coverage is required. Features, specifications and fees vary by subscription plan and are subject to change. For more on details and limitations, visit hyundai.com or your authorized Hyundai dealer. ²The hands-free smart trunk will open when your Proximity Key is within 3 feet of the detection area for at least 3 seconds. Radio transmitters and other vehicle smart keys may interfere with normal operation. See Owner's Manual for details. ³Based on 2010, 2011, 2012, 2013, 2014, 2015, 2016, 2017 and 2018 Brand Keys Customer Loyalty Engagement Index*. ⁴2018 model-year vehicles' projected cost to own for the initial five-year ownership period is based on the average Kelley Blue Book 5-Year Cost to Own data, which considers depreciation and costs such as fuel and insurance. For more information, visit www.kbb.com.



“The Elantra’s interior is definitely a top selling point. It’s well built, attractive and spacious. In addition, the controls are logically placed, and getting in and out is a breeze.” – *Edmunds 2018 Elantra Review*

Mind if we make a little noise about how quiet Elantra is inside?

Quietness is not something most people attribute to compact cars. Typically, you have to move up a class or two in order to enjoy hushed serenity while driving. Thankfully, nobody shared that conventional wisdom with Elantra's designers.

Sit inside, and you'll see a space flush with modern features. What's not seen – it can only be heard – is how refined Elantra is when it comes to keeping quiet. Thicker front door glass, high-density carpet and sound-absorbing wheel well insulation help squelch noise, vibration and harshness. The solar glass also helps reflect heat, so you and your passengers can comfortably experience class-above features like dual automatic temperature control with a CleanAir Ionizer that helps purify the air you breathe inside the cabin.

Looking for the excitement of a performance sedan? Check out Elantra Sport. Sit in the deeply bolstered driver's seat, and your first clue that fun is in store rests in that thick-rimmed, flat-bottomed steering wheel in your hands. And the alloy pedals at your feet. Blip that pedal on the right, and you'll make some turbo-powered noise of your own.



Sounds Good

You'd be surprised how much of the real sound is missing from today's streaming music. Elantra's available 8-speaker Infinity® Premium Audio system puts the full sound back into your music with Clari-Fi™ Music Restoration Technology. You'll be blown away by the difference you hear.

More Power To You

The dual USB charging ports available on select Elantra models let you keep two digital devices plugged into their lifeblood electricity wherever you roam. The 2019 Elantra Limited also offers a generously proportioned wireless charging pad that does away with messy phone charging cords altogether.

A Smarter Trunk

With Elantra's smart trunk, there's no need to fumble for your keys when your hands are full of boxes or bags. It recognizes when you're standing near the rear of your Elantra and pops open the trunk lid automatically. A 60/40 split-folding rear seatback ups the hauling ante.



8-Speaker
Infinity®
Premium
Audio

Infinity

CLARI FI
Music Restoration Technology





¹Claim based on comparison of specifications on manufacturer websites. ²EPA MPG estimates for comparison only. Your actual mileage will vary with options, driving conditions, driving habits and the vehicle's condition.

Elantra isn't a hybrid. It just sips fuel and runs clean and green like one.

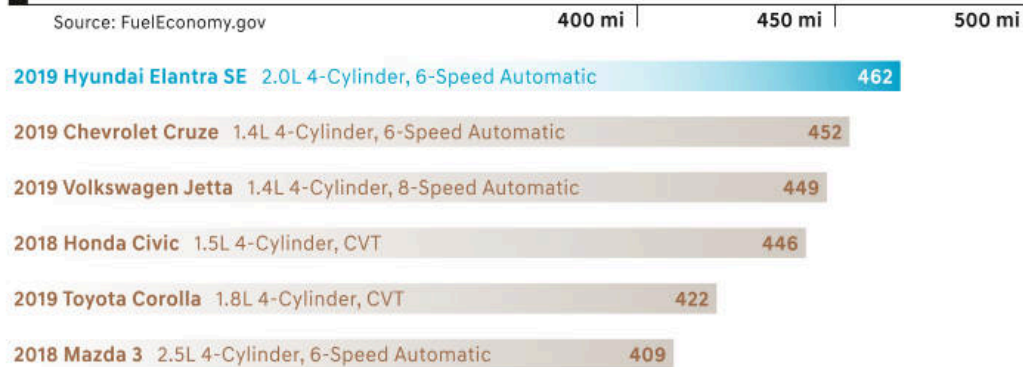
Elantra's window sticker displays some important numbers. Of course, there's the price – a key reason Elantra is so popular with car buyers. Also listed are two numbers we'd like to call to your attention: Greenhouse gas emissions and the smog rating. On models with the 2.0L 4-cylinder engine, both numbers place Elantra among the cleanest and greenest cars on the planet!

That's because the 2.0L engine available on Elantra is an Atkinson-cycle engine, the same type typically found in hybrid vehicles. Another reason Elantra is a popular choice is...choice. The 2.0L powerplant is just one of three available engines.

Elantra Eco's 1.4L Turbo GDI engine and 7-speed EcoShift® Dual Clutch Transmission create power that's so efficient, it achieves an EPA-estimated fuel economy of 40 MPG highway and 35 MPG combined.² On Elantra Sport, a 201-hp 1.6L Turbo GDI engine is mated to your choice of a 6-speed manual gearbox or available 7-speed automatic Dual Clutch Transmission with paddle shifters.

Combined MPG Driving Range

Source: FuelEconomy.gov



The Cure For Congestion

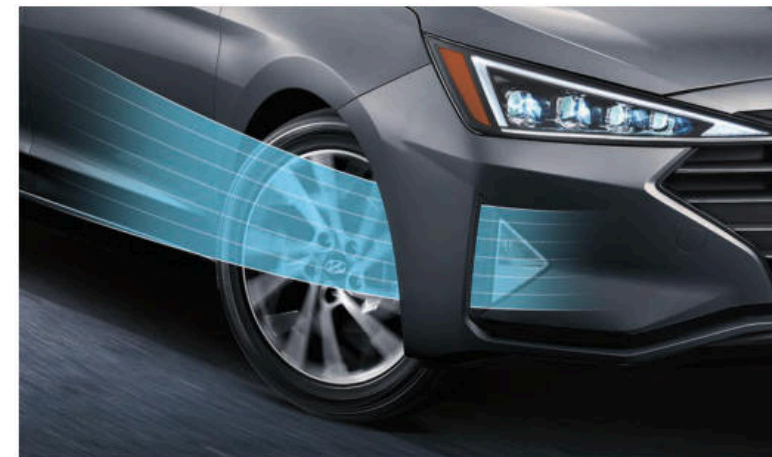
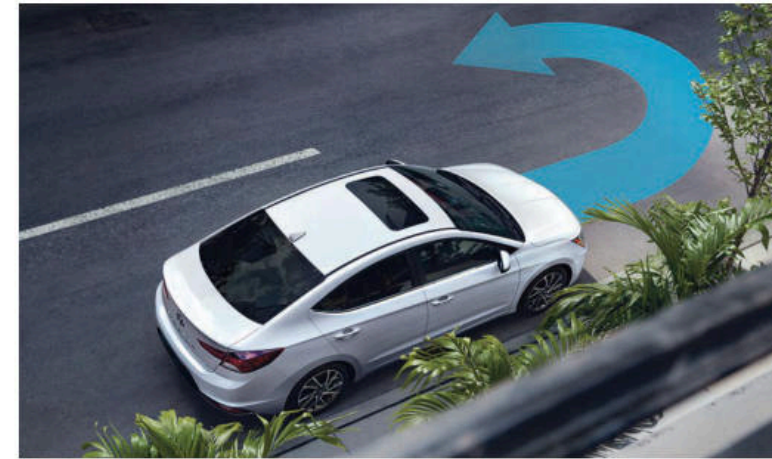
Elantra maneuvers through city traffic with ease. Its agility comes from a turning radius that's shorter than Toyota Corolla, Honda Civic and VW Jetta.¹ And with Hillstart Assist Control, Elantra helps prevent you from rolling backwards when starting on inclines.

Sport Specs

To give the 2019 Elantra Sport road-gripping performance, Hyundai engineers specified 18" alloy wheels and larger front brakes. Then, they tuned the steering feel and added an independent multi-link rear suspension for true performance sedan handling.

We Gave It The Slip

With a mere 0.27 drag coefficient, the 2019 Elantra is one of the most aerodynamic cars in its class.¹ It uses wheel air curtains and an optimized underbody structure to manage airflow, which improves both driving dynamics and fuel efficiency.





Above all, safety for all.

Over the past few years, there've been remarkable advances in the levels of safety technology available on new vehicles. At Hyundai, we're working hard to make the benefits of these innovative features available on more and more of our models. After all, you shouldn't have to choose a top-of-the-line trim level to feel like you're safe and secure.

Which is why we've brought Elantra Limited's benchmark safety technologies to virtually every Elantra model in our 2019 lineup. Elantra drivers can more confidently back out of parking spaces thanks to a standard rearview camera and available Rear Cross-Traffic Collision Warning.¹ You can also commute with less stress on freeways, knowing that Blind-Spot Collision Warning and Lane Keeping Assist are available to help guide your safe journeys.² Each of these advanced safety technologies comes standard on five of Elantra's six trim levels.

With Elantra, the safety innovation available to all includes a body infused with advanced high-strength steel and bonded with aircraft-quality adhesives. The strong, rigid yet lightweight structure not only creates a solid foundation for highly responsive driving, but – above all – helps protect you and your passengers in the event of an accident.

Hyundai SmartSense Technologies⁶



Your Attention Please

Driver Attention Warning, a safety feature commonly seen on more expensive luxury vehicles, is now standard on every Elantra above the base SE model.³ Elantra Sport and Limited drivers get attention with full LED headlights, complete with High Beam Assist.

Exit Strategy

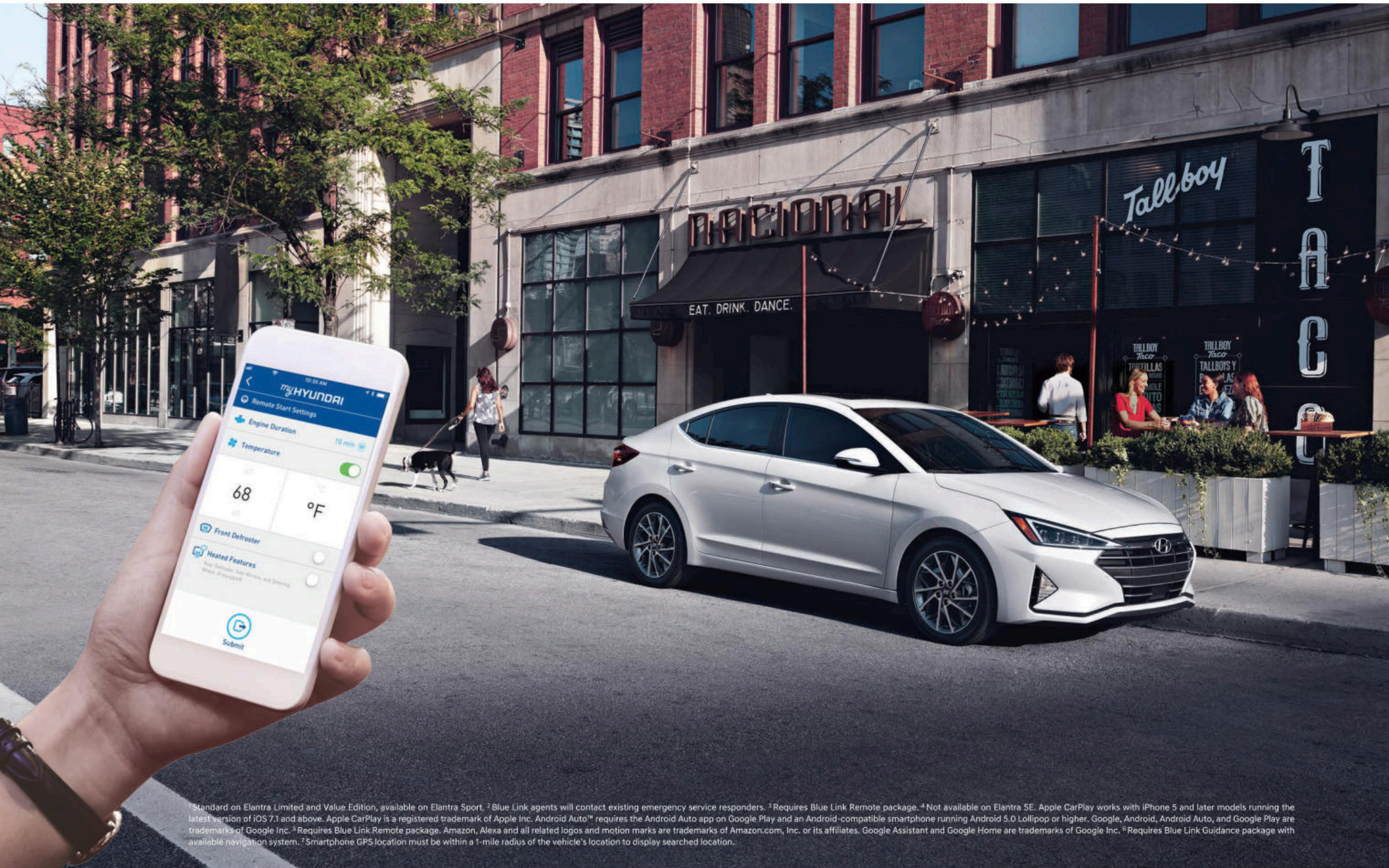
When you're parallel parked on a busy street, Safe Exit Assist can sense vehicles approaching from the rear. It responds by issuing an audible warning to help protect the backseat passenger who is attempting to open a door into oncoming traffic.⁴

People Power

Elantra Limited adds Pedestrian Detection to an available Forward Collision-Avoidance Assist feature that's so advanced, it automatically applies partial or full brake-force stopping power to help avoid a collision with either a vehicle or a pedestrian in front of you.⁵



¹Rear Cross-Traffic Collision Warning (RCCW) is active when the vehicle is in reverse gear and backing at a speed less than 6 mph. It only engages during the first activation of reverse gear from park and may not detect all vehicles, depending on the size, angle, distance and speed of the other vehicle. Never rely exclusively on RCCW. Always look over your shoulder and use your mirrors to confirm rear clearance. There are limitations to the function, range, detection and clarity of this system. See Owner's Manual for details. ²Do not rely completely on Blind-Spot Collision Warning (BCW) and be sure to use proper lane changing procedures. BCW may not detect every object or vehicle and will not prevent accidents. There are limitations to the function, range, detection and clarity of this system. See Owner's Manual for details. Lane Keeping Assist operates above approximately 44 mph and only when the lane markings are clearly visible on the road. It will not work under all circumstances and will not prevent loss of control. It is a supplemental assist, and does not replace the need for extreme care and attention by the driver. See Owner's Manual for details. ³It is the driver's responsibility to remain alert at all times. Driver Attention Warning is only a warning to inform the driver of a potential lack of driver attention or drowsiness. It does not detect and provide an alert in every situation. See Owner's Manual for details. ⁴Available exclusively on Elantra Limited with Ultimate Package. When Elantra is in park, Safe Exit Assist (SEA) can alert occupants who are opening a rear door to the presence of a vehicle approaching from behind. SEA is not a substitute for attentiveness. See Owner's Manual for important details and limitations. ⁵Pedestrian Detection helps detect pedestrians, but not in all conditions. Forward Collision-Avoidance Assist (FCA) is designed to assist drivers to avoid, or reduce the severity of, collisions with cars that have slowed or stopped in front of them. It is a supplemental assist and does not replace the need for extreme care and attention by the driver. FCA may not stop the vehicle completely and will not avoid all collisions. ⁶Safety features vary by model. For details, refer to the Features chart in the back of this brochure or visit hyundai.com.



¹Standard on Elantra Limited and Value Edition, available on Elantra Sport. ²Blue Link agents will contact existing emergency service responders. ³Requires Blue Link Remote package. ⁴Not available on Elantra SE. Apple CarPlay works with iPhone 5 and later models running the latest version of iOS 7.1 and above. Apple CarPlay is a registered trademark of Apple Inc. Android Auto™ requires the Android Auto app on Google Play and an Android-compatible smartphone running Android 5.0 Lollipop or higher. Google, Android, Android Auto, and Google Play are trademarks of Google Inc. ⁵Requires Blue Link Remote package. Amazon, Alexa and all related logos and motion marks are trademarks of Amazon.com, Inc. or its affiliates. Google Assistant and Google Home are trademarks of Google Inc. ⁶Requires Blue Link Guidance package with available navigation system. ⁷Smartphone GPS location must be within a 1-mile radius of the vehicle's location to display searched location.

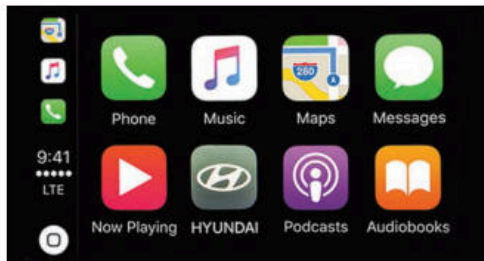
ELANTRA Limited with Ultimate Package in Quartz White Pearl

Seamlessly connect your life with your Hyundai? We've got an app for that.

Welcome to Blue Link,[®] a technology that transforms Elantra into a vehicle unlike any you've ever owned! For starters, there's Blue Link Connected Care, which offers Enhanced Roadside Assistance, 24/7 SOS Emergency Assistance and Automatic Collision Notification that calls for help if you're ever in an accident where an airbag deploys.²

Teenager borrowing the car? Geo-Fence, Speed and Curfew Alert features let you rest easy by notifying you if the speeds, times or distances you set are exceeded.³ There's a Car Finder feature that lets you locate your Hyundai at crowded stadiums or shopping malls.³ And Monthly Vehicle Health Reports offer a convenient way to help ensure your Elantra is in optimal condition. Scheduling a service appointment is just as easy using the touchscreen in your Elantra or your MyHyundai smartphone app.

Speaking of our smartphone app, Blue Link Remote Access lets you start your car and warm or cool its interior while you're getting ready to leave.³ You can also use Blue Link with your Apple Watch[™] or Android Wear[™] device to start your engine or lock/unlock your Elantra's doors from almost anywhere. Blue Link makes life between your home, your workplace and your Hyundai seamless.



The Smartphone, Now Smarter

Apple CarPlay[™] and Android Auto[™] integrate your smartphone with Elantra's large high-resolution display. So you can seamlessly access maps and navigation, contact lists, texts, calls, your music library and more using the touchscreen or simple voice commands.⁴



Voices Carry

Blue Link Remote Access integrates with Amazon Alexa[®] and Google Assistant[™] voice services. So you can ask your Amazon Echo[®] or Google Home[™] device to start your Elantra's engine, unlock the car doors and set the cabin temperature from the comfort of your couch, kitchen or office.⁵



Hyundai Blue Link[®]

What gives Elantra owners a better connection to the things they need? Hyundai's Blue Link Connected Car System, complimentary for the first 3 years of ownership. For details on all of the Blue Link features offered, visit hyundaiabluelink.com.



Automatic Emergency Assistance

Blue Link Connected Care offers 24/7 SOS Emergency Assistance and Automatic Collision Notification that calls for help if you're in an accident where airbags deploy.



On-Demand Diagnostics

Run vehicle diagnostics from your Hyundai's touchscreen, report issues at the press of a button, and receive Monthly Vehicle Health Reports or maintenance reminders by email.



Destination Send-To-Car

Ask your phone to find new restaurants or points of interest that may not be updated on your vehicle's maps, then send the destination to Elantra's navigation system.⁶



Remote Controls

Use your smartphone, home assistant or wearable device to remotely start your Elantra's engine, unlock the doors, set the cabin temperature and more.³



Car Finder

Your MyHyundai app lets you navigate your way through crowded stadiums or shopping mall parking lots back to your car.⁷



Service Link

Conveniently schedule your vehicle for service from the driver seat of your Elantra or your MyHyundai smartphone app.

Models & Packages

ELANTRA SE



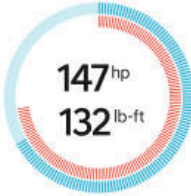
15" Steel Wheels



Popular Features

- Rearview camera with dynamic guidelines
- Bluetooth® hands-free phone system
- Cruise control (A/T only)
- Drive Mode Select (Normal/Sport)
- Tilt-and-telescopic steering wheel with audio controls
- 5" color display AM/FM/MP3 audio with 6 speakers
- 60/40 split-folding rear seats

2.0L 4-Cylinder
City/Highway/Combined MPG
29/38/33
A/T EPA Estimates
26/36/29
M/T EPA Estimates



ELANTRA Value Edition



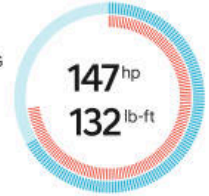
16" Alloy Wheels



Popular Features

- Proximity Key entry with push button start
- Dual automatic temperature control with auto defogger
- Leather-wrapped steering wheel and shift knob
- Hands-free smart trunk
- Power tilt-and-slide sunroof
- Blue Link® Connected Car System (3 years complimentary)
- Heated front seats

2.0L 4-Cylinder
City/Highway/Combined MPG
28/37/32
A/T EPA Estimates



ELANTRA SEL



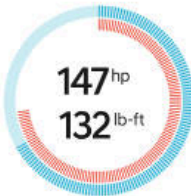
16" Alloy Wheels



Popular Features

- 7" high-resolution touchscreen display audio
- Android Auto™ and Apple CarPlay™
- Blind-Spot Collision Warning
- Rear Cross-Traffic Collision Warning
- Forward Collision-Avoidance Assist
- Heated side mirrors
- Driver Attention Warning/Lane Keeping Assist

2.0L 4-Cylinder
City/Highway/Combined MPG
28/37/32
A/T EPA Estimates



ELANTRA Eco



15" Alloy Wheels



Popular Features

- Proximity Key with push button start
- Automatic headlights
- Heated front seats
- Leather-wrapped steering wheel and shift knob
- Dual USB charge ports
- Dual automatic temperature control with auto defogger
- Hands-free smart trunk

1.4L Turbo GDI 4-Cylinder
City/Highway/Combined MPG
32/40/35
A/T EPA Estimates



ELANTRA Sport



18" Alloy Wheels



Popular Features

Sport-tuned suspension and steering

Proximity Key with push button start

Leather-wrapped flat-bottom steering wheel

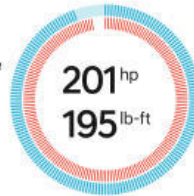
Sport front seats with leather seating surfaces

60/40 split fold-down rear seatback

High/low-beam LED headlights and LED taillights

Hands-free smart trunk

1.6L Turbo GDI 4-Cylinder
EPA fuel economy not available at printing. For the latest EPA MPG ratings, please visit hyundai.com.



Premium Package

8" high-resolution touchscreen navigation system

Infinity® Premium Audio system with 8 speakers

Clari-Fi™ Music Restoration Technology

Blue Link® Connected Car System

Dual automatic temperature control

Auto-dimming rearview mirror with HomeLink®

ELANTRA Limited



17" Alloy Wheels



Popular Features

Blue Link® Connected Car System (3 years complimentary)

Power driver seat with adjustable lumbar support

Wireless charging pad

Infinity® Premium Audio system with 8 speakers

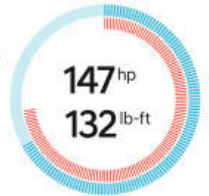
Clari-Fi™ Music Restoration Technology

Leather seating surfaces with heated front seats

High/low-beam LED headlights and LED taillights

2.0L 4-Cylinder
City/Highway/Combined MPG

28/37/32
A/T EPA Estimates



Ultimate Package

Integrated Memory System for driver seat and side mirrors

8" high-resolution touchscreen navigation system

4.2" color LCD multi-info display

Blind-Spot Collision Warning with Safe Exit Assist

Forward Collision-Avoidance Assist with Pedestrian Detection

Smart Cruise Control

Power tilt-and-slide sunroof

Rear Cross-Traffic Collision Warning



ELANTRA	SE	SEL	Value Edition	Eco	Sport	Limited
Power & Handling						
147 hp/132 lb-ft, 2.0L Atkinson-cycle 4-cylinder engine	●	●	●	–	–	●
128 hp/156 lb-ft, 1.4L Turbo GDI 4-cylinder engine	–	–	–	●	–	–
201 hp/195 lb-ft, 1.6L Turbo GDI 4-cylinder engine	–	–	–	–	●	–
6-speed manual transmission	●	–	–	–	●	–
6-speed automatic transmission with SHIFTRONIC®	○	●	●	–	–	●
7-speed EcoShift® Dual Clutch Transmission (DCT) with SHIFTRONIC®	–	–	–	●	○	–
Drive Mode Select – A/T and DCT only (Normal/Sport)	●	–	–	–	–	–
Integrated Drive Mode Select (Normal/Sport/Smart)	–	●	●	●	●	●
Multi-link independent rear suspension	–	–	–	–	●	–
Sport-tuned suspension and steering	–	–	–	–	●	–
Front disc brakes and rear drum brakes	●	–	–	●	–	–
4-wheel disc brakes	–	●	●	–	●	●
Larger front disc brake rotors	–	–	–	–	●	–
Exterior Features						
Cascading chrome grille	●	●	●	●	–	●
Sport front grille	–	–	–	–	●	–
Sport rear bumper with air diffuser	–	–	–	–	●	–
Solar-control glass	●	●	●	●	●	●
Chrome lower side-window molding	–	–	–	–	●	●
Automatic headlights	–	●	●	●	●	●
Projector headlights	●	●	●	●	–	–
LED Daytime Running Lights	–	–	–	●	●	●
High/low-beam LED headlights and LED taillights	–	–	–	–	●	●
Heated side mirrors	–	●	●	●	●	●
Bodycolor power side mirrors	●	●	●	●	●	●
Chrome-tipped exhaust	–	–	–	–	●	–
Hands-free smart trunk	–	–	●	●	●	●
Power tilt-and-slide sunroof	–	–	●	–	●	○
Rearview camera with dynamic guidelines	●	●	●	●	●	●
Interior Features						
Remote keyless entry system with alarm	●	●	●	●	●	●
Proximity Key entry with push button start	–	–	●	●	●	●
3.5" LCD multi-information display	–	●	●	●	●	●
4.2" color LCD multi-information display	–	–	–	–	–	○
Tilt-and-telescopic steering wheel with audio controls	●	●	●	●	●	●
Cruise control (A/T only)	○	●	●	●	●	●
Dual automatic temperature control with auto defogger	–	–	●	●	○	●

ELANTRA	SE	SEL	Value Edition	Eco	Sport	Limited
Interior Features						
Leather-wrapped steering wheel and shift knob	–	–	●	●	●	●
Flat-bottom steering wheel and sport front seats	–	–	–	–	●	–
Heated front seats	–	–	●	●	●	●
Power driver seat with adjustable lumbar support	–	–	–	–	–	●
Integrated Memory System for driver seat and side mirrors	–	–	–	–	–	○
Leather seating surfaces	–	–	–	–	●	●
6-way adjustable driver seat including height adjustment	●	●	●	●	●	●
60/40 split-folding rear seats	●	●	●	●	●	●
Cabin air filter	●	●	●	●	●	●
Front and rear-seat cupholders	–	–	●	●	●	●
Alloy sport pedals and black headliner	–	–	–	–	●	–
Illuminated visor vanity mirrors with extensions	–	–	●	●	●	●
Door handle approach lights	–	–	●	●	–	●
Auto-dimming rearview mirror with HomeLink®	–	–	–	–	○	●
Smart Cruise Control	–	–	–	–	–	○
Advanced Safety						
Forward Collision-Avoidance Assist	–	●	●	●	●	●
Forward Collision-Avoidance Assist with Pedestrian Detection	–	–	–	–	–	○
Lane Keeping Assist	–	●	●	●	●	●
High Beam Assist	–	–	–	–	●	●
Driver Attention Warning	–	●	●	●	●	●
Blind-Spot Collision Warning with Rear Cross-Traffic Collision Warning	–	●	●	●	●	●
Safe Exit Assist	–	–	–	–	–	○
Audio & Connected Car Technology						
5" color display AM/FM/MP3 audio with 6 speakers	●	–	–	–	–	–
7" high-resolution touchscreen display with AM/FM/MP3 audio and 6 speakers	–	●	●	●	●	●
8" high-resolution touchscreen navigation with AM/FM/MP3 audio	–	–	–	–	○	○
Infinity® Premium Audio system with 8 speakers and Clari-Fi™ Music Restoration Technology	–	–	–	–	○	●
Android Auto™ and Apple CarPlay™	–	●	●	●	●	●
SiriusXM® Satellite Radio and HD Radio™	–	●	●	●	●	●
Bluetooth® hands-free phone with audio streaming	●	●	●	●	●	●
Wireless charging pad	–	–	–	–	–	●
Blue Link® Connected Car System (3 years complimentary)	–	–	●	–	○	●
Smartphone/USB auxiliary input jacks	●	●	●	●	●	●
Dual USB charge ports	–	–	–	●	●	●

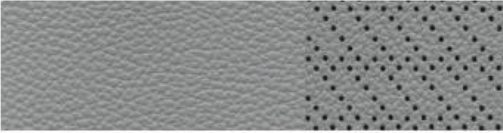
● Standard ○ Optional – Not Available

Interior Colors

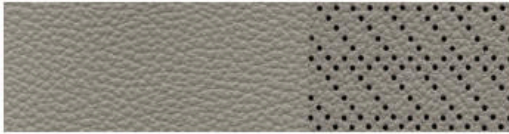
Limited
Black Leather



Limited
Gray Leather



Limited
Beige Leather



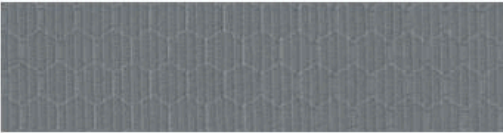
Sport
Black Leather with Red Stitching



SE, SEL, Eco, Value Edition
Premium Black Cloth



SE, SEL, Eco
Premium Gray Cloth



SE, SEL, Eco, Value Edition
Premium Beige Cloth



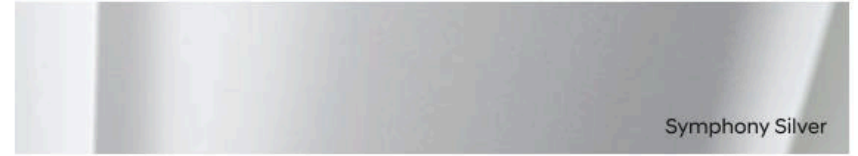
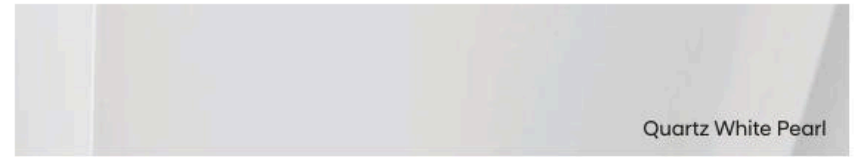
Exterior Dimensions

	ELANTRA
Wheelbase	106.3 in
Overall Length	181.9 in
Overall Width	70.9 in
Overall Height	56.5 in
Coefficient of Drag (Elantra/Elantra Sport)	0.27 / 0.31 Cd

Interior Dimensions

	ELANTRA
Head Room, front (with sunroof)/rear	40.3 (38.8) / 37.3 in
Leg Room, front/rear	42.2 / 35.7 in
Shoulder Room, front/rear	56.2 / 55.3 in
Hip Room, front/rear	53.4 / 51.9 in

Exterior Colors





When there's hope, anything is possible.

Every time we sell a Hyundai, a portion goes to Hyundai Hope On Wheels® to help find a cure for childhood cancer. Over the last 20 years, Hyundai Hope On Wheels has donated more than \$145 million. Hope is our greatest feature. And it comes standard on every Hyundai. For more information, please visit HyundaiHopeOnWheels.org.



America's Best Warranty

Powertrain
Limited Warranty

10 years
100,000 miles

New Vehicle
Limited Warranty

5 years
60,000 miles

Anti-Perforation
Warranty

7 years
UNLIMITED miles

24/7 Roadside
Assistance

5 years
UNLIMITED miles

 **HYUNDAI**
Assurance
HYUNDAIASSURANCE.COM

Our commitment to Hyundai owners doesn't end with the transfer of keys. Wherever the road takes you, we've got your back with Hyundai Assurance, an umbrella of services and benefits that includes America's Best Warranty, 24/7 Roadside Assistance, innovative safety and car care features...and more.

See dealer for LIMITED WARRANTY details. Fuel economy estimated by EPA for comparison only. Mileage may vary. While the information contained in this brochure was correct at the time of printing, specifications and equipment can change. Feature comparisons based on competitor information available at the time of printing. No warranty or guarantee is being extended in this brochure, and Hyundai reserves the right to change product specifications and equipment at any time without incurring obligations. Some vehicles are shown with optional equipment. Specifications apply to U.S. vehicles only. Please contact your Hyundai dealer for current vehicle specifications. As part of Hyundai's commitment to a responsible environment, this brochure was printed using paper certified by the Forest Stewardship Council®. FSC® certification helps ensure that the highest social and environmental standards are met in the making of the paper we use, contributing to conservation, responsible management and community-level benefits for people near the forests.



©2018 HYUNDAI NPO20 82019