

2023

# ELANTRA





## Choose your Elantra: Bold, bolder or boldest.

For decades, drivers looking for a sedan that is exceptionally satisfying to own have chosen Hyundai Elantra. In fact, Elantra's lasting appeal has been a key reason why more people who buy a Hyundai buy another – more than any other car at any price. That's according to an annual survey by Brand Keys, which ranks Hyundai #1 in customer loyalty for the past 13 years in a row.<sup>1</sup>

With all it has going for it, the question isn't "Why Elantra?" The question is "Which Elantra?" You can choose your Elantra based on three types of power. For starters, there's Elantra SE, SEL and Limited with a traditional 2.0L gasoline engine that strikes the right balance between stirring performance and fuel-sipping efficiency.

With Elantra N Line, a 1.6L Turbo engine complements its sporty looks, offering you the joys of juiced-up performance. Elantra N – our ultimate performer – is powered by a race-bred 2.0L Turbo. For a different kind of performance, there's the Elantra Hybrid. Named 2022 Best Hybrid and Electric Car for the Money by *U.S. News & World Report*,<sup>2</sup> it delivers a whopping 50+ EPA-estimated combined MPG with ultra-low emissions.<sup>3</sup>

No matter which one you choose, your Elantra will draw attention on looks alone thanks to its cut-diamond shapes, wide cascading grille, stylish lighting and lowered coupe-like profile. Inside, Elantra's modern interior is centered around an available 10.25" touchscreen – the largest in its class.<sup>4</sup> It's big on space, too, with class-leading rear-seat legroom<sup>4</sup> and a total interior volume that is surprisingly large for a compact car.



2022 Hyundai ELANTRA Hybrid

<sup>1</sup>Based on Brand Keys 2010, 2011, 2012, 2013, 2014, 2015, 2016, 2017, 2018, 2019, 2020, 2021 and 2022 Customer Loyalty Engagement Index\*. <sup>2</sup>View U.S. News Best Cars at cars.usnews.com. <sup>3</sup>Elantra Hybrid EPA estimates for comparison only. Mileage may vary. Your actual mileage will vary with options, driving conditions, driving habits and the vehicle's condition. <sup>4</sup>Claim based on comparison of specifications on manufacturer websites.

ELANTRA Hybrid Limited in Ceramic White



ELANTRA Limited in Portofino Gray

<sup>1</sup>The available Hyundai Near Field Communication Digital Key requires a compatible Android smartphone and appropriately equipped 2023 Hyundai Elantra. Not all Android devices are compatible. Elantra vehicle must be equipped with a smart key with push button start, wireless device charging and Audio Video Navigation System 5.0 (or newer) or Display Audio 2.0. Lock and unlock functionality works on the front doors only. See your Owner's Manual for details and limitations. <sup>2</sup>Qi wireless charging function is based on smartphone compatibility and/or specific accessory cases. <sup>3</sup>EPA estimates for comparison only. Mileage may vary. Your actual mileage will vary with options, driving conditions, driving habits and the vehicle's condition.



LED combination taillights



Drive Mode Select & 10.25" digital instrument cluster display



17" dark medium gray wheels

## With Elantra, power comes naturally.

Elantra's power trip starts even before you step into your car. Hyundai's available Digital Key can unlock the front doors using your compatible smartphone.<sup>1</sup> Placing your phone on Elantra's available wireless charging pad<sup>2</sup> then enables the car's push button engine start.

But the real power flows from a Smartstream 2.0L Atkinson Cycle engine paired with a Smartstream Intelligent Variable Transmission. On the highway, Elantra SE's intelligent use of power translates to an EPA-estimated 42 MPG – giving you the power to make fewer refueling pit stops.<sup>3</sup>

Turn the steering wheel or touch the brakes, and it's instantly obvious that Elantra can handle itself in a corner, forging a firm bond between you and the road. With Drive Mode Select,

Elantra even lets you choose a driving dynamic to match your mood. Say you want to maximize Elantra's fuel economy. In that case, you'd select Eco mode. Want the response of your car's engine and transmission to give you more of a performance thrill? Select Sport mode. Other modes include Smart and Normal.

Speaking of moods, Elantra moves with quiet confidence. Hyundai engineers devoted extra effort on the details that reduce NVH – that's engineering shorthand for noise, vibration and harshness. The seal of each door's glass was made tighter and more secure to help keep high frequency noise from intruding on the peace of the passenger cabin. After all, you deal with enough noise in the real world, right? Let Elantra be your sanctuary.



ELANTRA Limited in Melange with Gray Leather-Trimmed Seating

# N Line or Hybrid: Performance is a matter of perspective.

Performance can mean different things to different drivers. To some, it means more power. To others, performance is defined by efficiency. Either way, the Elantra model range delivers on your desires.

For drivers seeking more power, the Elantra N Line offers a turbocharged 201-hp punch. Controlling all of that power is a 7-speed Dual Clutch Transmission with paddle shifters and a sport-tuned suspension. With each gear shift, you'll hear the engine's crisp notes coming from chrome-tipped dual exhaust outlets. With each turn of the wheel, you'll feel the firm grip of performance tires on 18" alloy wheels.

Want to optimize your fuel economy and reduce your carbon footprint? The Elantra Hybrid offers an advanced hybrid

powertrain with segment-leading fuel economy.<sup>1</sup> Elantra Hybrid Blue features an EPA-estimated 54 combined MPG<sup>2</sup> – that's more efficient than Toyota Corolla Hybrid!<sup>1</sup> All from a 1.6L GDI engine and 32 kW electric motor that combine for 139 horsepower and 195 lb-ft of torque.

Both Elantra N Line and Elantra Hybrid feature a multi-link rear suspension for confident cornering. And both come equipped with unique braking systems that offer enhanced performance compared to standard Elantra models.

So whether you press the pedal on the right, or the pedal on the left, the power is unmistakable. No matter how you choose to define it.



Hybrid Limited: 10.25" high-resolution touchscreen navigation



N Line: 7-speed Dual Clutch Transmission



N Line: Dual chrome-tipped exhaust outlet



ELANTRA N Line in Black Leather + Cloth with Red Stitching



<sup>1</sup>Claim based on comparison of specifications on manufacturer websites. <sup>2</sup>EPA estimate for comparison only. Mileage may vary. Your actual mileage will vary with options, driving conditions, driving habits and the vehicle's condition.

ELANTRA N Line in Electric Shadow



ELANTRA N in Performance Blue

## Take driving to the Nth degree. With Elantra N.

Part of our inspiration for the N designation of Hyundai's high-performance N models is the legendary Nürburgring race track in Germany. It's the ultimate test for a performance car – a single lap of this twisting, turning road circuit is nearly 13 miles long with 154 corners. So everything about Elantra N is engineered to endure the demands that the 'Ring makes on a performance car's steering, braking and handling dynamics.

Its "Flat Power" 2.0L turbocharged engine delivers 276 horsepower and 289 lb-ft of torque. The suspension is stiffer. The steering ratio is quicker. The brakes are beefier. There's even a variety of drive modes, including a full-on N performance setting and two custom modes accessed by blue steering wheel buttons. Press that red button on the steering wheel, and you trigger an N Grin Shift overboost that adds 10 horsepower for 20 seconds.<sup>1</sup>

Elantra N loves launching down straightaways, thanks to standard Launch Control. Armed with the available 8-speed Wet Dual Clutch Transmission and N Power Shift (which minimizes torque reduction during wide-open throttle upshifts), you'll sprint from 0-60 mph in about 5 seconds on the racetrack.

With its multi-link rear suspension enhanced by a host of N-specific additions, Elantra N also loves carving corners. An electronic limited-slip N Corner Carving Differential facilitates faster corner exits, with 245/35R19 Michelin<sup>®</sup> Pilot Sport 4S summer tires helping rivet you to the road.<sup>2</sup> An Integrated Drive Axle inspired by Hyundai's WRC rally cars enhances handling under extreme lateral g-forces, while a second-generation Electronically Controlled Suspension allows our widest range of suspension settings ever – from an extreme track situation to a family road trip.



N Light Sport bucket seats with illuminated N logo



ELANTRA N with rear wing spoiler, full LED taillights and large-bore dual exhaust outlets



Elantra N TCR race cars



Drive Mode and N Grin Shift buttons

<sup>1</sup>Maximum of 10 hp overboost operates at 5,500 rpm and above for 20 seconds. There is a 40-second interval before overboost can be reactivated. Overboost deactivates when time expires or the driver lifts off the accelerator pedal. Always use extreme caution when using the N Grin Shift feature. The driver is responsible for being attentive and maintaining control of the vehicle at all times. See Owner's Manual for further details and limitations. <sup>2</sup>Summer tires not intended to be used in low temperatures or on roads covered by snow or ice.

NEVER JUST DRIVE

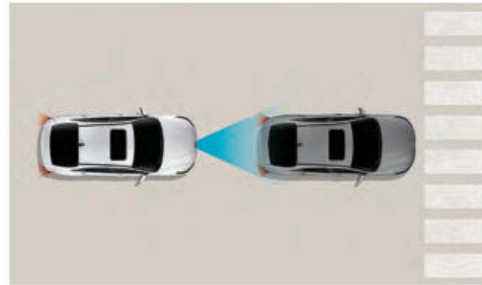


# Our high standards of safety come standard.

Every 2023 Elantra comes standard with an array of Hyundai SmartSense technologies designed to help protect you wherever you drive.<sup>1</sup> Even after you've exited your car, features like Rear Occupant Alert help ensure your family's safety.<sup>2</sup> Beneath its sleek exterior, Elantra's body construction is a solid foundation formed from advanced high-strength steel and

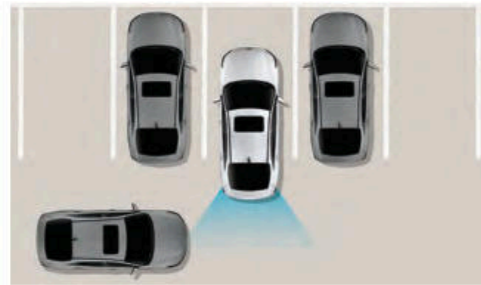
bonded by aircraft-quality adhesives. It's a rigid chassis engineered to help optimize Elantra's handling response and help protect the passenger cabin in the event of a collision. No wonder Elantra models equipped with Forward Collision-Avoidance Assist and LED headlights have earned an *IIHS TOP SAFETY PICK* rating for the last 12 consecutive years as of June 2022.<sup>3</sup>

## Hyundai SmartSense Technologies



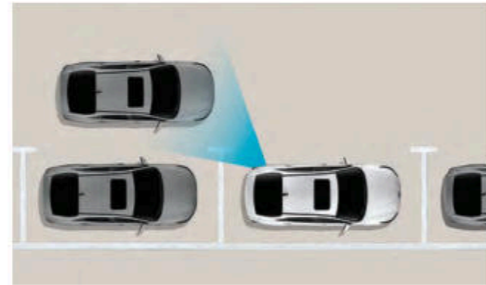
### Forward Collision-Avoidance Assist

When the front-facing camera or available radar detects a vehicle or pedestrian in your path, or oncoming cars when turning left in an intersection, your Elantra can warn you of a potential collision. If necessary, the system will automatically apply emergency braking to help avoid a collision.<sup>4</sup>



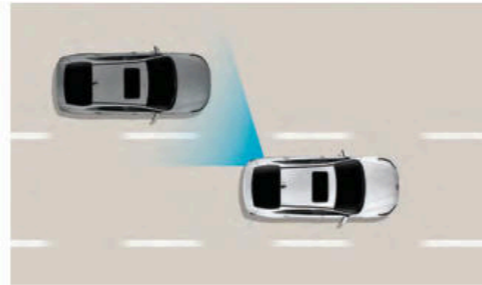
### Rear Cross-Traffic Collision-Avoidance Assist

Backing out of a parking space and wondering if there is cross traffic coming your way? This feature warns you if another vehicle is detected to be approaching from the side. If necessary, your Elantra automatically applies braking to help prevent a collision.<sup>5</sup>



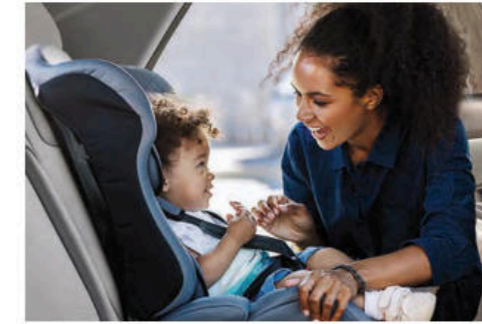
### Safe Exit Warning

After parking your Elantra, Safe Exit Warning issues an alert when another vehicle is detected to be approaching from behind, letting the driver know it may not be safe for passengers to open their street-side door.<sup>6</sup>



### Blind-Spot Collision-Avoidance Assist

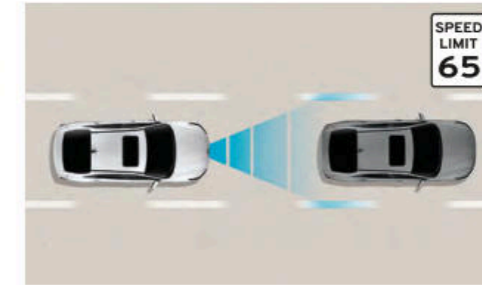
If your Elantra detects a vehicle in your blind spot while your turn signal is on, it alerts the driver and automatically applies light braking before you change lanes to help avoid a collision. It can also detect vehicles as far as two lanes over to help prevent collisions when exiting from a parallel parking spot.<sup>7</sup>



Rear Occupant Alert

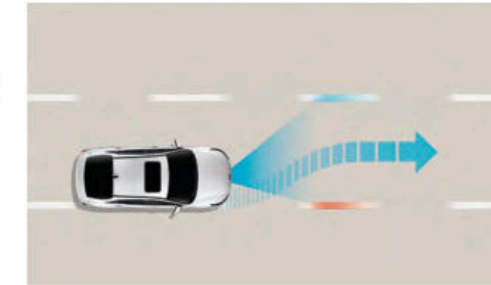


Rear View Monitor with dynamic parking guidelines



### Highway Driving Assist

Acting as your copilot on highways, this available feature helps keep you centered in your lane while also maintaining a set cruising speed and distance from the vehicle in front of you. It uses Elantra's navigation map data to automatically adjust for changing speed limits and reduces your speed when it detects you're approaching a curve in the road.<sup>8</sup>



### Lane Following Assist

Using the front-facing camera to detect lane markers on the road, this feature assists the Elantra driver's steering to help keep the vehicle centered in its lane. Elantra can also determine a virtual path to help keep you positioned in your driving lane based on the movements of the vehicle in front of you.<sup>9</sup>



2022 Hyundai ELANTRA and ELANTRA Hybrid with LED headlights



2022 Hyundai ELANTRA and ELANTRA Hybrid<sup>10</sup>

<sup>1</sup>Safety features vary by model. For details, refer to the Features chart in the back of this brochure or visit HyundaiUSA.com. <sup>2</sup>When the vehicle is parked and the engine has been turned off, Rear Occupant Alert can help to alert the driver if the rear door(s) have been opened at any point after the vehicle was unlocked at the beginning of the journey. Upon turning the engine off, Rear Occupant Alert will provide a visual alert on the instrument cluster. Rear Occupant Alert is not a substitute for driver attentiveness. Never leave a child or pet unattended in a vehicle. See Owner's Manual for details and limitations. <sup>3</sup>To qualify for 2022 *TOP SAFETY PICK*, a vehicle must earn good ratings in the driver-side and passenger-side small overlap front, moderate overlap front, side, roof strength and head restraint tests. It also must earn an advanced or superior rating for vehicle-to-vehicle and vehicle-to-pedestrian front crash prevention and an acceptable or good headlight rating. For details visit [www.iihs.org](http://www.iihs.org). <sup>4</sup>Forward Collision-Avoidance Assist with Pedestrian Detection is intended to be a supplement to safe driving practices. The system is not designed to detect certain stationary objects such as trees or poles, and may not detect all vehicles or pedestrians under certain conditions. The system is a driver assistance system and is not a substitute for safe driving. The driver is responsible for being attentive and maintaining control of the vehicle, and should not wait for the system's alerts before braking as there may not be sufficient time to brake safely. See Owner's Manual for details and limitations. <sup>5</sup>Rear Cross-Traffic Collision-Avoidance Assist (RCCA) is designed to notify drivers of approaching cross traffic behind their vehicle. When another vehicle is detected while you are backing out of a parking spot, it provides audible and visual display warnings and applies braking if it senses a collision

is imminent. RCCA is active when the vehicle is in reverse gear and backing at a speed less than 6 mph. It only engages during the first activation of reverse gear from park and may not detect all vehicles, depending on the size, angle, distance and speed of the other vehicle. Never rely exclusively on RCCA. Always look over your shoulder and use your mirrors to confirm rear clearance. There are limitations to the function, detection, range and clarity of the system. See Owner's Manual for details and limitations. <sup>6</sup>When your vehicle is parked, Safe Exit Warning (SEW) can alert occupants planning to exit when another vehicle is detected to be approaching from behind. SEW does not work in all situations and is not a substitute for driver or passenger attentiveness. Always be aware of your surroundings and attentive of approaching vehicles. See Owner's Manual for details and limitations. <sup>7</sup>Blind-Spot Collision-Avoidance Assist (BCA) helps warn of other cars in the blind-spot region and can apply braking to help prevent an unsafe lane change. It also helps prevent collisions when exiting parallel parking spots by alerting the driver to a potential hazard. Never rely exclusively on BCA, as it is not a substitute for attentive driving. Always look over your shoulder and use your mirrors to confirm clearance. There are limitations to the function, detection, range and clarity of the system. BCA may not function correctly if one or more of the parking sensors is damaged, dirty or covered, or if weather conditions (heavy rain, snow or fog) are interfering with sensor operation. See Owner's Manual for details and limitations. <sup>8</sup>Highway Driving Assist (HDA) is for highway use only and can help maintain your distance from the vehicle ahead while helping to keep your vehicle centered in its lane when lane markings are clearly visible on the road. HDA should not be used in poor weather, heavy or varying traffic, or on winding or slippery roads. HDA will not work under all circumstances and will not prevent loss of control. Driver remains responsible to slow or stop the vehicle to avoid a collision. See Owner's Manual for details and limitations. <sup>9</sup>Lane Following Assist (LFA), when actively engaged with Smart Cruise Control or Highway Driving Assist, helps keep your vehicle centered in its lane when the lane markings are clearly visible on the road. Lane Following Assist will not work under all circumstances and will not prevent loss of control. Lane Following Assist is a supplemental assist, and does not replace the need for extreme care and attention by the driver. See Owner's Manual for details and limitations. <sup>10</sup>Government 5-Star Safety Ratings are part of the National Highway Traffic Safety Administration's New Car Assessment Program ([nhtsa.gov](http://nhtsa.gov)).



## Here, comfort and convenience are key.

It starts with the available Hyundai Digital Key, which lets you unlock your Elantra's front doors and start the engine using your compatible smartphone.<sup>1</sup> Multiple drivers can be assigned a digital key that instantly retrieves personalized audio system preferences, driver seat/side mirror presets with the available Integrated Memory System, and more.

Once inside, you'll enjoy Elantra's spacious cabin and best-in-class rear-seat legroom.<sup>2</sup> Available features like 60/40 split-folding rear seats and a hands-free smart trunk release<sup>3</sup> create easy-loading cargo room that makes Elantra a surprisingly versatile sedan. An available power sunroof adds to the expansiveness. And Elantra's available ambient lighting lets you set the mood to any of 64 colors.

Dynamic Voice Recognition is also available for a fundamental breakthrough in convenience. Your conversational voice adjusts climate controls, selects SiriusXM® channels and more. Staying in-the-know is as easy as asking your Elantra "How's the stock market today?" or "What time does the playoff game start?"<sup>4</sup>

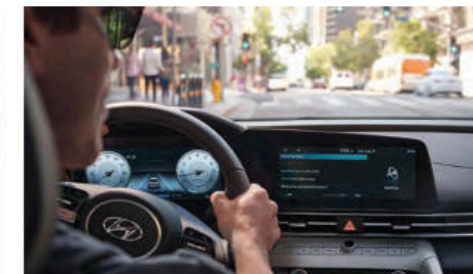
Seated in Elantra Hybrid Limited? Ventilated front seats cool you, and a 10.25" digital instrument cluster and 10.25" split-screen navigation system are integrated into a single cover of glass. Settle into Elantra N or Elantra N Line, and a sport steering wheel and bolstered sport seats fully immerse you in the performance of your car.



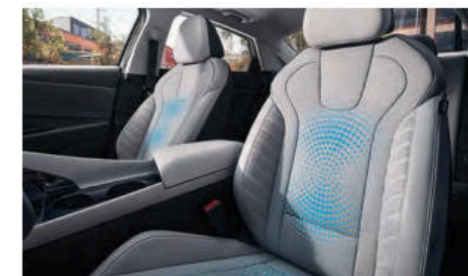
Power tilt-and-slide sunroof



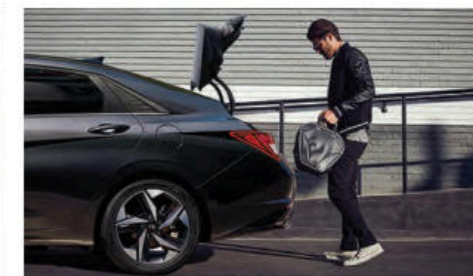
Dual automatic temperature controls



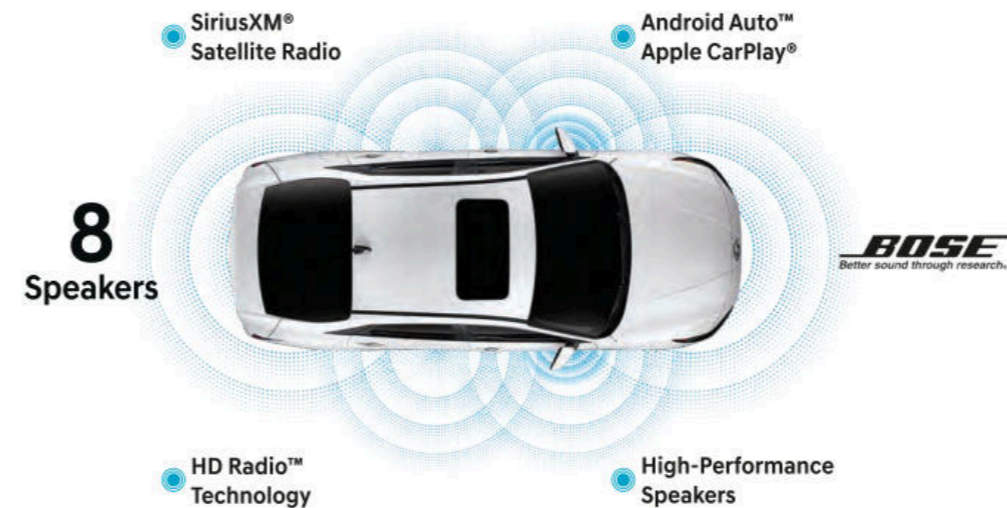
Dynamic Voice Recognition



Ventilated front seats



Hands-free smart trunk release



<sup>1</sup>The available Hyundai Near Field Communication Digital Key requires a compatible Android smartphone and appropriately equipped 2023 Hyundai Elantra. Not all Android devices are compatible. Elantra vehicle must be equipped with a smart key with push button start, wireless device charging and Audio Video Navigation System 5.0 (or newer) or Display Audio 2.0. Lock and unlock functionality work on the front doors only. See your Owner's Manual for details and limitations. <sup>2</sup>Claim based on comparison of specifications on manufacturer websites. <sup>3</sup>The smart trunk will open when your Proximity Key is within 40 inches of the detection area for at least 3 seconds. Radio transmitters and other vehicle smart keys may interfere with the normal operation of this feature. See Owner's Manual for details and limitations. <sup>4</sup>Dynamic Voice Recognition varies by unit. Speak in a normal voice and minimize background noise for best results. Internet searches require BlueLink Guidance package subscription. See Owner's Manual for details and limitations.



# Remote control for your Hyundai. And your day.

Elantra might be the ultimate way to upgrade your mobile device. Thanks to Bluelink,<sup>®</sup> Elantra is available with a comprehensive suite of safety, convenience and remote features that let you interact with your car – and the rest of your digital life – in powerful, practical ways.<sup>1</sup>

If you're like most Hyundai owners, the Bluelink features you will use most are its remote capabilities. With the MyHyundai app, you can use Bluelink to start your car's engine, adjust the climate controls – even activate the available heated front seats – from the comfort of your office or kitchen using your smartphone or smartwatch,<sup>2</sup> or your Amazon Echo<sup>®</sup>/Google Home<sup>™</sup> virtual assistant.<sup>3</sup>

Starting your Elantra remotely, or with the available Hyundai Digital Key, tunes your radio presets and restores driver seating/mirror preferences using your Bluelink personal profile and available Integrated Memory System before you slip behind the wheel. Want to remotely check to see if you've left your doors unlocked or the lights on? Consult your MyHyundai app for the answers.<sup>2</sup>

Elantra's standard Apple CarPlay<sup>®</sup> and Android Auto<sup>™</sup> are available with the segment's first wireless connection.<sup>4</sup> Want to stream your music? Elantra's Bluetooth<sup>®</sup> lets you connect two phones to the audio system simultaneously. And to keep everyone powered up, Elantra offers dual USB charge ports and is available with wireless device charging.<sup>5</sup>



Hyundai Digital Key



Apple CarPlay



Wireless device charging

## Bluelink



### Automatic Emergency Assistance

Bluelink Connected Care offers 24/7 SOS Emergency Assistance as well as Automatic Collision Notification that calls for help if you're in an accident where your vehicle's airbags deploy.<sup>6</sup>



### On-Demand Diagnostics

Run vehicle diagnostics from your MyHyundai mobile app, report issues at the press of a button and receive maintenance reminders or Monthly Vehicle Health Reports by email.



### Destination Send-to-Car

Use your smartphone to find restaurants or points of interest, then send the destination to your Elantra's available navigation system for driving directions before you slip behind the wheel.<sup>7</sup>



### Remote Vehicle Controls

Use your smartphone, your virtual assistant or wearable device to remotely start your Elantra's engine, unlock the car doors, set the car's cabin temperature, and more.



### Hyundai Car Finder

Our Car Finder smartphone app feature helps you find your way back to your Elantra after a day of downtown shopping or an evening spent rooting for your favorite team.



### Remote Vehicle Status

Wondering how much fuel is in your car's tank? If your Elantra's trunk is closed or the doors are unlocked? Your MyHyundai app knows the answers to these questions and more.

<sup>1</sup>Not available on Elantra SE or Elantra Hybrid Blue. Optional on Elantra SEL. The 2023 Hyundai Elantra includes 3 years of the Bluelink Connected Care, Remote and Guidance (factory-equipped navigation required) packages. All trials require an active Bluelink subscription agreement subject to the Connected Services Terms and Conditions. Three-year term starts from the new vehicle date-of-first-use, is available for new vehicle purchases and leases, and is transferable to subsequent owners subject to the Terms and Conditions. Only use Bluelink and corresponding devices when safe to do so. Cellular and GPS coverage is required. Features, specifications and fees are subject to change. For more on details and limitations, visit HyundaiUSA.com or your authorized Hyundai dealer. <sup>2</sup>Requires active Bluelink subscription with Remote package. <sup>3</sup>Amazon, Alexa and all related logos and motion marks are trademarks of Amazon.com, Inc. or its affiliates. Google Assistant and Google Home are trademarks of Google LLC. <sup>4</sup>Claim based on comparison of specifications on manufacturer websites. Apple CarPlay<sup>®</sup> is a registered trademark of Apple Inc. Android Auto<sup>™</sup> is compatible with Android<sup>™</sup> phones running Android 5.0 or higher. Android Auto may not be available on all devices and is not available in all countries or regions. Additional apps may be required. Android and Android Auto are trademarks of Google LLC. <sup>5</sup>Qi wireless charging function is based on smartphone compatibility and/or specific accessory cases. <sup>6</sup>Bluelink agents will contact existing emergency service responders. <sup>7</sup>Requires active Bluelink subscription with Guidance package and vehicle equipped with navigation system.

## ELANTRA SE

Smartstream 2.0L MPI 4-Cylinder Engine



hp 147 lb-ft 132

### Popular Features

- Forward Collision-Avoidance Assist with Pedestrian Detection
- Lane Keeping Assist and Lane Following Assist
- Blind-Spot Collision-Avoidance Assist
- Rear Cross-Traffic Collision-Avoidance Assist
- Wireless Apple CarPlay®/Android Auto™
- Dual USB ports (1 charge+data, 1 charge)

## ELANTRA Limited

Smartstream 2.0L MPI 4-Cylinder Engine



hp 147 lb-ft 132

### Popular Features

- High/low-beam LED headlights
- Leather-trimmed seating surfaces
- Highway Driving Assist
- Dark chrome exterior accents
- Parking Collision-Avoidance Assist – Reverse
- Parking Distance Warning – Reverse

## Wheels

15" Alloy Wheel SE



16" Alloy Wheel SEL and Blue



17" Alloy Wheel SEL Convenience Package and Limited



18" Alloy Wheel N Line



19" Alloy Wheel Elantra N



## ELANTRA SEL

Smartstream 2.0L MPI 4-Cylinder Engine



hp 147 lb-ft 132

### Popular Features

- Proximity Key entry with push button start
- Dual automatic temperature control
- SiriusXM® Satellite Radio
- 8" touchscreen AM/FM/HD Radio™ audio system with 6 speakers
- Hands-free smart trunk release
- Bluelink® Connected Car System

### ELANTRA SEL Convenience Package

- 10.25" touchscreen navigation system
- Dynamic Voice Recognition
- Forward Collision-Avoidance Assist with Pedestrian, Cyclist and Junction-Turning Detection
- 10.25" digital instrument cluster display
- Smart Cruise Control with Stop & Go
- Heated front seats
- Heated outside mirrors
- Leather-wrapped steering wheel
- Leather-wrapped shift knob
- Wireless device charging
- Electronic Parking Brake
- 17" alloy wheels

## ELANTRA N Line

1.6L Turbo GDI 4-Cylinder Engine



hp 201 lb-ft 195

### Popular Features

- 10.25" touchscreen navigation system
- Chrome-tipped dual exhaust outlet
- N Line unique front and rear fascia
- N Line unique leather/cloth combination sport seats
- 10.25" digital instrument cluster display
- Larger 12" front brake rotors and multi-link rear suspension

### Exterior Dimensions

ELANTRA / ELANTRA Hybrid / N

Wheelbase	107.1 in
Overall Length	184.1 in
Overall Width	71.9 in
Overall Height	55.7 in
Overall Height – N Line	55.9 in

### Interior Dimensions

ELANTRA / ELANTRA Hybrid / N

Headroom – front (with sunroof) / rear	40.6 (38.7) / 37.3 in
Legroom – front / rear	42.3 / 38.0 in
Shoulder Room – front / rear	56.5 / 55.6 in
Passenger Volume	99.4 cu ft
Cargo (Trunk) Volume	14.2 cu ft
Total Interior Volume	113.6 cu ft

## ELANTRA Hybrid Blue

Smartstream 1.6L GDI 4-Cylinder Hybrid Engine



net hp 139 net lb-ft 195

### Popular Features

- 54 Combined MPG
- Lane Keeping Assist and Lane Following Assist
- SiriusXM® Satellite Radio and 6-speaker audio system
- Dual automatic temperature control
- Heated front seats and side mirrors
- Blind-Spot Collision-Avoidance Assist

## ELANTRA Hybrid Limited

Smartstream 1.6L GDI 4-Cylinder Hybrid Engine



net hp 139 net lb-ft 195

### Popular Features

- Leather-trimmed seating surfaces and ventilated front seats
- Integrated Memory System for driver's seat and side mirror
- 10.25" touchscreen navigation system
- Parking Collision-Avoidance Assist – Reverse
- Parking Distance Warning – Reverse
- Ambient LED interior lighting

## ELANTRA N

2.0L Turbo GDI 4-Cylinder Engine

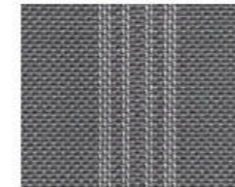


hp 276 lb-ft 289

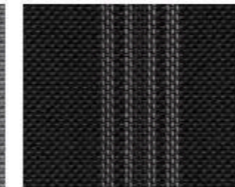
### Popular Features

- N-specific body styling and rear underbody air diffuser
- Available N 8-speed Wet Dual Clutch Transmission (DCT)
- N Grin Shift and N Power Shift (DCT only)
- N Grin Control System – Drive Mode Select
- Electronically Controlled Suspension
- 19" Michelin® Pilot Sport 4S summer performance tires

## Interior Colors



Gray Cloth SE



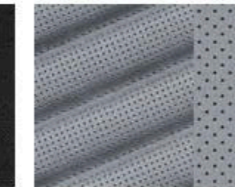
Black Cloth SE



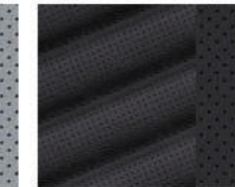
Gray Tricot Cloth SEL/Blue



Black Tricot Cloth SEL/Blue



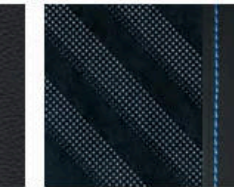
Melange with Gray Leather-Trim Seats Limited/Limited



Melange with Black Leather-Trim Seats Limited/Limited



Black Leather/Cloth Seats with Red Stitching N Line

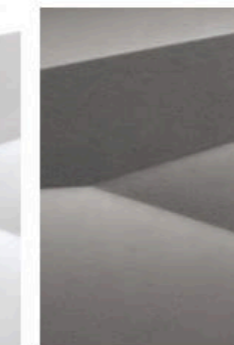


Black Leather-Trim Seats with Microsuede Inserts Elantra N

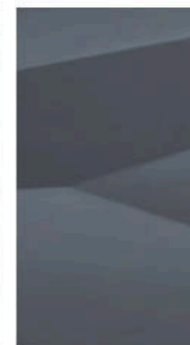
## Exterior Colors



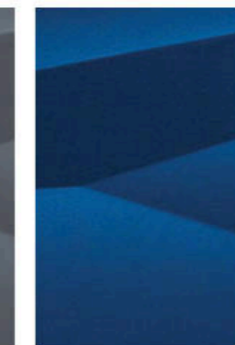
Serenity White / Ceramic White



Shimmering Silver\* / Fluid Metal



Electric Shadow\*



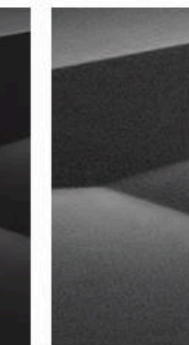
Intense Blue



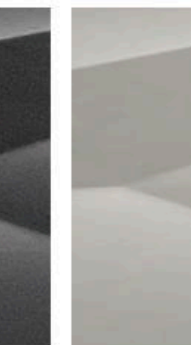
Calypto Red\* / Scarlet Red Pearl



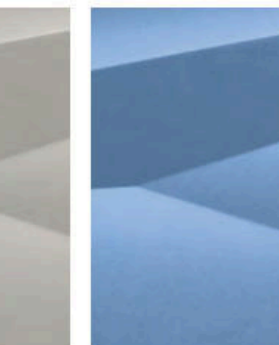
Phantom Black / Black Noir Pearl



Portofino Gray\*



Cyber Gray Elantra N Only



Performance Blue Elantra N Only

\*Shimmering Silver, Electric Shadow and Calypso Red not available on Elantra N. Portofino Gray not available on Elantra N, N Line or Hybrid models

## ELANTRA / ELANTRA Hybrid

Power & Handling	SE	SEL	N Line	Limited	Blue	Limited
147 hp/132 lb-ft, 2.0L Atkinson Cycle 4-cylinder engine	●	●	–	●	–	–
201 hp/195 lb-ft, 1.6L Turbo GDI 4-cylinder engine	–	–	●	–	–	–
139 net hp, 1.6L GDI Atkinson Cycle 4-cylinder hybrid engine with 32 kW permanent magnet high-power density motor	–	–	–	–	●	●
Smartstream Intelligent Variable Transmission (IVT)	●	●	–	●	–	–
7-speed Dual Clutch Transmission (DCT) with SHIFTRONIC® paddle shifters	–	–	●	–	–	–
6-speed EcoShift® Dual Clutch Transmission (DCT)	–	–	–	–	●	●
Electronic Parking Brake	–	●	–	●	●	●
Drive Mode Select	●	●	●	●	●	●
Multi-link rear suspension	–	–	●	–	●	●
Larger 12" front brake rotors	–	–	●	–	–	–
4-wheel disc brakes	●	●	●	●	●	●
Exterior Features	SE	SEL	N Line	Limited	Blue	Limited
Black grille	●	●	–	–	●	–
Dark chrome grille and exterior accents	–	–	–	●	–	●
N Line gloss black grille/N Line unique front/rear fascia	–	–	●	–	–	–
Chrome-tipped dual exhaust outlet	–	–	●	–	–	–
Solar control glass	●	●	●	●	●	●
Automatic headlights and LED Daytime Running Lights	●	●	●	●	●	●
High Beam Assist	●	●	●	●	●	●
Projector headlights	●	●	●	–	●	–
High/low-beam LED headlights	–	–	–	●	–	●
LED/bulb combination taillights	–	–	●	●	–	●
Heated side mirrors	–	●	●	●	●	●
Side mirrors with turn signal indicators	–	–	–	●	–	●
Rear View Monitor with dynamic parking guidelines	●	●	●	●	●	●
Power tilt-and-slide sunroof	–	–	●	●	–	●
Hands-free smart trunk release	–	●	●	●	●	●
Interior Features	SE	SEL	N Line	Limited	Blue	Limited
Proximity Key entry with push button start	–	●	●	●	●	●
4.2" color LCD multi-information cluster display	●	●	–	–	●	–
10.25" digital instrument cluster display	–	●	●	●	–	●
Tilt-and-telescopic steering wheel with audio, phone and cruise controls	●	●	●	●	●	●
Dual automatic temperature control	–	●	●	●	●	●
Cruise control	●	●	●	–	●	–
Smart Cruise Control with Stop & Go	–	●	–	●	–	●
Leather-wrapped steering wheel and shift knob	–	●	●	●	–	●
Heated front seats	–	●	●	●	●	●
Ventilated front seats	–	–	–	–	–	●

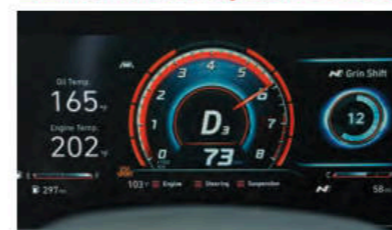
Interior Features	SE	SEL	N Line	Limited	Blue	Limited
Integrated Memory System for driver's seat and side mirrors	–	–	–	–	–	●
6-way adjustable driver seat including height adjustment	●	●	–	–	●	–
Power driver seat with adjustable lumbar support	–	–	●	●	–	●
Cloth seating surfaces	●	●	–	–	●	–
Leather-trimmed seating surfaces	–	–	–	●	–	●
N Line unique leather/cloth combination sport seating surfaces	–	–	●	–	–	–
Alloy sport pedals and black headliner	–	–	●	–	–	–
60/40 split-folding rear seats with armrest and cupholders	–	–	●	●	–	●
Sunvisors with illuminated vanity mirror and extension	–	●	●	●	●	●
Auto-dimming rearview mirror	–	–	–	●	–	●
Ambient LED interior lighting (adjustable – 64 colors)	–	–	–	●	–	●
Advanced Safety	SE	SEL	N Line	Limited	Blue	Limited
Forward Collision-Avoidance Assist with Pedestrian Detection	●	●	●	–	●	–
Forward Collision-Avoidance Assist with Pedestrian, Cyclist and Junction-Turning Detection	–	●	–	●	–	●
Lane Keeping Assist and Lane Following Assist	●	●	●	●	●	●
Driver Attention Warning	●	●	●	●	●	●
Blind-Spot Collision-Avoidance Assist	●	●	●	●	●	●
Rear Cross-Traffic Collision-Avoidance Assist	●	●	●	●	●	●
Safe Exit Warning and Rear Occupant Alert	●	●	●	●	●	●
Parking Distance Warning – Reverse	–	–	–	●	–	●
Parking Collision-Avoidance Assist – Reverse	–	–	–	●	–	●
Highway Driving Assist	–	–	–	●	–	●
Audio & Connected Car Technology	SE	SEL	N Line	Limited	Blue	Limited
8" touchscreen AM/FM/HD Radio™ audio system	●	–	–	–	–	–
8" touchscreen AM/FM/HD Radio™/SiriusXM® Satellite Radio audio system with 6 speakers	–	●	–	–	●	–
10.25" high-resolution touchscreen navigation system with AM/FM/HD Radio™/SiriusXM® Satellite Radio	–	●	●	●	–	●
Bose® 8-speaker premium audio system	–	–	–	●	–	●
Apple CarPlay® and Android Auto™ (wireless   wired)	● –	● ●	– ●	– ●	● –	– ●
Bluetooth® hands-free phone with audio streaming	●	●	●	●	●	●
Wireless device charging	–	●	●	●	–	●
Bluelink® Connected Car System	–	●	●	●	●	●
Dynamic Voice Recognition	–	●	●	●	–	●
Hyundai Digital Key	–	–	●	●	–	●
Dual USB ports (1 charging + data / 1 charging)	●	●	●	●	●	●

● Standard ○ Optional ● SEL Convenience Package – Not Available

## ELANTRA N

Power & Handling	
276 hp/289 lb-ft, 2.0L Turbo GDI 4-cylinder engine	●
6-speed manual transmission with downshift rev matching	●
N 8-speed Wet Dual Clutch Transmission (DCT) with paddle shifters	○
N Grin Control System – Drive Mode Select	●
Launch Control	●
N Grin Shift (DCT only)	○
N Power Shift (DCT only)	○
N Corner Carving Differential	●
Rack-mounted Motor-Driven Power Steering	●
14.2" front and 12.4" rear ventilated brake rotors	●
Electronically Controlled Suspension	●
MacPherson strut front and multi-link rear suspension	●
Rear chassis brace	●
Exterior Features	
LED headlights and LED taillights	●
High Beam Assist	●
LED Daytime Running Lights	●
N logo front grille	●
N-specific body styling and rear underbody air diffuser	●
Large-bore dual exhaust outlets	●
Heated side mirrors with turn signal indicators	●
Rear wing spoiler	●
Power tilt-and-slide sunroof	○
Hands-free smart trunk release	●
19" Michelin® Pilot Sport 4S summer performance tires	●
Interior Features	
Proximity Key entry with push button start	●
10.25" digital instrument cluster display	●
N-exclusive leather-wrapped steering wheel and shift knob	●

## ELANTRA N Popular Features



Customizable digital instrument cluster



N gear shift knob



N logo engraved side molding



Rear wing spoiler



Large-bore dual exhaust outlets

Interior Features	
Tilt-and-telescopic steering wheel with audio, phone and cruise controls	●
Dual automatic temperature control	●
6-way adjustable driver seat	●
N Light Sport bucket seats trimmed in black leather with microsuede inserts	●
Heated front seats	●
Driver's auto-down/up window	●
Aluminum sport pedals and door sill plates	●
N Sound Equalizer	●
Rear View Monitor with dynamic parking guidelines	●
Advanced Safety	
Forward Collision-Avoidance Assist with Pedestrian Detection	●
Lane Keeping Assist and Lane Following Assist	●
Driver Attention Warning	●
Parking Distance Warning – Reverse	●
Blind-Spot Collision-Avoidance Assist	●
Rear Cross-Traffic Collision-Avoidance Assist	●
Audio & Connected Car Technology	
10.25" high-resolution touchscreen navigation system with AM/FM/HD Radio™/SiriusXM® Satellite Radio	●
Bose® 8-speaker premium audio system	●
Apple CarPlay® and Android Auto™	●
Bluelink® Connected Car System	●
Bluetooth® hands-free phone with audio streaming	●
Wireless device charging	●
Hyundai Digital Key	●
Dynamic Voice Recognition	●
Dual USB charge ports and 12V power outlet	●

● Standard ○ Optional



### ELANTRA

2023 EPA MPG Estimates (City/Highway/Combined)<sup>1</sup>

**33/42/37 MPG** SE / Smartstream IVT

**30/40/34 MPG** SEL & Limited / Smartstream IVT

**28/36/31 MPG** N Line / 7-speed automatic DCT



### ELANTRA Hybrid

2023 EPA MPG Estimates (City/Highway/Combined)<sup>1</sup>

**53/56/54 MPG** Blue / 6-speed automatic DCT

**49/52/50 MPG** Limited / 6-speed automatic DCT



### ELANTRA N

2022 EPA MPG Estimates (City/Highway/Combined)<sup>2</sup>

**22/31/25 MPG** 6-speed manual transmission

**20/30/23 MPG** N 8-speed Wet Dual Clutch Transmission

<sup>1</sup>EPA estimates for comparison only. Mileage may vary. Your actual mileage will vary with options, driving conditions, driving habits and the vehicle's condition. <sup>2</sup>2023 EPA estimates not available at time of publication with anticipated EPA certification pending. 2022 MPG figures are provided for comparison purposes only. Your actual mileage will vary with options, driving conditions, driving habits and the vehicle's condition.



Hyundai Hope On Wheels®

Helping Kids Fight Cancer Since 1998



## Hope comes standard on every Hyundai.

Each time we sell a Hyundai, a portion goes to Hyundai Hope On Wheels® to help find a cure for childhood cancer. Over the last 24 years, Hyundai Hope On Wheels has donated more than \$200 million. Hope is our greatest feature. And it comes standard on every Hyundai. For more information, please visit [HyundaiHopeOnWheels.org](http://HyundaiHopeOnWheels.org).



## America's Best Warranty

POWERTRAIN  
LIMITED WARRANTY

**10** YEARS  
100,000 MILES

NEW VEHICLE  
LIMITED WARRANTY

**5** YEARS  
60,000 MILES

ANTI-PERFORATION  
WARRANTY

**7** YEARS  
UNLIMITED MILES

24/7 ROADSIDE  
ASSISTANCE

**5** YEARS  
UNLIMITED MILES

HYBRID/ELECTRIC  
SYSTEM COMPONENTS

**10** YEARS  
100,000 MILES



**Hyundai**  
Complimentary  
Maintenance

Complimentary maintenance includes Hyundai-approved oil and oil filter change (except for electric vehicles and fuel cell electric vehicles) plus tire rotation at normal factory-scheduled maintenance intervals for 3 years or 36,000 miles, whichever comes first. More frequent maintenance due to severe driving or conditions excluded. Offer valid only for new 2020-2023 Hyundai models purchased or leased on or after February 1, 2020. See your Hyundai dealer for further details and limitations.



**Owner**  
Assurance

Our commitment to Hyundai owners does not end with the transfer of keys. Wherever the road takes you, we have got your back with Hyundai Owner Assurance, an umbrella of services and benefits that includes America's Best Warranty, 24/7 Roadside Assistance, innovative safety and car care features...and more.

See dealer for LIMITED WARRANTY details. Fuel economy estimated by EPA for comparison only. Mileage may vary. While the information contained in this brochure was correct at the time of printing, specifications and equipment can change. Feature comparisons based on competitor information available at the time of printing. No warranty or guarantee is being extended in this brochure, and Hyundai reserves the right to change product specifications and equipment at any time without incurring obligations. Some vehicles are shown with optional equipment. Specifications apply to U.S. vehicles only. Please contact your Hyundai dealer for current vehicle specifications. As part of Hyundai's commitment to a responsible environment, this brochure was printed using paper certified by the Forest Stewardship Council®. FSC® certification helps ensure that the highest social and environmental standards are met in the making of the paper we use, contributing to conservation, responsible management and community-level benefits for people near the forests.



©2022 HYUNDAI NP02082023