

**2016 HYUNDAI**  
**FULL LINE**





2016 HYUNDAI LINEUP

# WELCOME TO HYUNDAI. AS YOU'RE ABOUT TO SEE, THE POSSIBILITIES ARE SURPRISING.

**F**lip through the pages of this, the 2016 Hyundai Full Line catalog, and you just might feel like a kid in a candy store. After all, the Hyundai model lineup has never been more extensive, ranging from sport coupes and plug-in hybrids to luxury sedans and crossover vehicles of all sizes.

If everywhere you look, there's something that attracts your eye, then you've been captivated by what Hyundai designers call Fluidic Sculpture. It's a sense that forces of nature have helped shape the curves and creases of each Hyundai model, creating a powerful visual statement that won't be mistaken for someone else's car. If everything you read suggests these are vehicles of engineering substance – vehicles on the cutting-edge of innovations in performance, efficiency, safety and connectivity – then you're ready for the next step: A test-drive at your Hyundai dealer.

It's here you'll learn that, for all our cars have to offer, we bring even more to the table as a car company. Blue Link,<sup>®</sup> our connected car system, is revolutionizing how you interact with both your vehicle and your Hyundai dealer.<sup>1</sup> And Hyundai remains the car company that backs the J.D. Power-recognized quality of its vehicles with America's Best Warranty. We like to think of it as the automotive equivalent of nutritional value. So go ahead, enjoy.



THE OFFICIAL CAR, SUV AND  
LUXURY VEHICLE OF THE NFL



EQUUS ULTIMATE in Manhattan Brown

2016 HYUNDAI

# EQUUS

429<sup>HP</sup> | 23<sup>MPG</sup>  
5.0L | HWY

## THERE IS NO SHORTCUT TO THE TOP.

Equus owners know the essential ingredients of a true luxury sedan. It starts with a potent V8 engine. The power you feel behind the wheel flows from our award-winning 429-horsepower Tau® V8 and an 8-speed SHIFTRONIC® automatic transmission. Next criteria? A rear-wheel-drive chassis. In Equus, it creates a refined balance of ride comfort and handling precision, aided by an Electronic Air Suspension.

Of course, exquisite craftsmanship is also a must. Onboard Equus, a spacious cabin rewards passengers with sumptuous leather and premium wood trim accents. Technology works its silent magic, too, easing your every move with advances in comfort and convenience. Finally, there's the ownership experience. It starts when you schedule your Equus test-drive. We'll deliver an Equus to your home, your office or the destination of your choice.

And when it's time to have your Equus serviced, use the Equus Owner Experience app to let us know. We'll come to you with a courtesy replacement vehicle – then return your Equus back to you when it's ready. As an Equus owner, you'll feel like you've discovered what true luxury is all about.



**MULTI-VIEW CAMERA SYSTEM** In Equus Ultimate, cameras in the side mirrors combine with a forward-view cornering camera and a rearview camera to see all around your car. A monitor in the center console lets you scan multiple viewpoints.



**STIR YOUR SENSES** The rich wood accentuating every Equus interior underscores everything you see, hear and touch. A heated wood-and-leather steering wheel. A premium 17-speaker Lexicon® audio system. A 12-way power driver seat with power lumbar. And more.

**RELAXED REFINEMENT** Settle into either of the rear seats. Press the power recline switch, turn on the soothing heat, and you'll know Equus isn't content to let the driver have all the fun. In Equus Ultimate, dual 9.2" high-resolution video monitors ensure the individualized entertainment of rear-seat passengers. Lower the power sunshades on the rear side windows and back window to transform Equus Ultimate into your own private screening room.





GENESIS 3.8 ULTIMATE in Parisian Gray

2016 HYUNDAI

# GENESIS

## A LUXURY PERFORMANCE SEDAN SHOULD PERFECTLY BALANCE BOTH.

Genesis is that rare luxury performance sedan that gets the balance between luxury and performance just right. In selecting Genesis as its 2015 Car of the Year, *Autoguide.com* editors noted how impressed they were with the quality of its interior – the roomiest in its class.<sup>4</sup> In honoring Genesis with a coveted GOOD DESIGN<sup>®</sup> award, the Chicago Athenaeum Museum recognized its stunning forms, inside and out.<sup>5</sup> And *Autoweek* enthused over the remote control features that let you start, lock and unlock your Genesis via the Blue Link smartphone app.<sup>6</sup>

The 2015 Genesis received the industry's highest safety rating (IIHS Top Safety Pick+) thanks to an impressive suite of Sensory Surround Safety<sup>®</sup> technologies that make the car – and its driver – more responsive to potential hazards.<sup>7</sup>

Is performance the deciding factor for you? The Genesis 3.8L V6 and 5.0L V8 powertrains pour on low- and mid-range torque for thrilling acceleration. All of which begs the question: Is Genesis a luxury sedan that performs? Or a performance sedan that feels luxurious? The answer is, yes.

420<sup>HP</sup> | 23<sup>MPG</sup>  
5.0L | HWY



**REMOTE ACCESS** Blue Link features on the Genesis Intelligence Assistant app let you remotely start your car for up to 10 minutes and pre-set the cabin temperature. If your plans change after remote-starting your car, you can stop the engine remotely, too.<sup>8</sup>



**HTRAC ALL WHEEL DRIVE** To help improve grip whether the road is wet or dry, Genesis is available with an advanced dual-mode HTRAC All Wheel Drive. World-class suspension experts at Lotus Engineering further validated the ride and handling.

**INTELLIGENT DRIVE MODE** Select from four ride and handling settings (Normal, Sport, Eco or Snow) based on what you desire or conditions demand. There's also an Emergency Steer Assist Mode that seamlessly optimizes suspension responsiveness and stability control in sudden evasive maneuvers.





GENESIS COUPE 3.8 in Ibiza Blue. Professional driver on a closed course. Do not attempt.

2016 HYUNDAI

# GENESIS COUPE

## TURNS ASPHALT INTO YOUR DAILY DOSE OF FUN.

Face it – without asphalt, there'd be no Genesis Coupe. No class-leading performance, fueled by a 348-horsepower GDI V6 engine that delivers more horsepower and more torque with a better power-to-weight ratio than the Infiniti Q60 (and more horsepower and torque than Nissan 370Z).<sup>9</sup> There'd be no world-record runs up Pikes Peak. No true sports car driving dynamics – the kind that only come from a rear-wheel-drive chassis with an advanced rear multi-link suspension.

There are other rear-wheel-drive sport coupes, of course. But none more refined. More sorted. More centered. As the driver, you feel as if Genesis Coupe's center of gravity is just beneath where your backside's planted into the firmly bolstered driver's seat.

Inside the cockpit, you're welcomed into the lap of luxury. Genesis Coupe Ultimate comes standard with a heated, power-adjustable leather seat for the driver. It's adjustable 10 different ways for precisely tailored comfort and also includes a power lumbar adjustment. That's precision plush you'll appreciate. So slide open the available power glass sunroof and unwind. Even if it's a Monday morning.

348<sup>HP</sup> | 25<sup>MPG</sup>  
3.8L | HWY



**GENESIS COUPE R-SPEC** A close-ratio 6-speed manual transmission with carbon-coated synchronizer rings enables quicker shifts. A Torsen® limited-slip differential helps transfer power to the pavement, while powerful Brembo® brakes scrub speed, gripping 19" graphite finish alloys.



**GENESIS COUPE ULTIMATE** A spirit of luxurious travel is expressed by a leather-wrapped steering wheel and shift knob. Push-button start and electroluminescent gauges. Heated leather seating surfaces. Bluetooth® hands-free phone with voice recognition and audio streaming, and more.

**DRIVER-SELECTABLE ELECTRONIC STABILITY CONTROL** On start-up, Electronic Stability Control (ESC) is full-on. You can select an intermediate function to override powertrain control, yet retain the ESC/TCS braking function. Full-off ESC mode provides drivers a larger performance envelope for autocrosses or track days.<sup>10</sup>





AZERA LIMITED in Diamond White Pearl

2016 HYUNDAI

# AZERA

## COMMON SENSE WAS NEVER SO SENSATIONAL.

Azera is a stylish, roomy and comfortable sedan that's filled with all of the premium features you want. Who says common sense can't look and feel sensational?

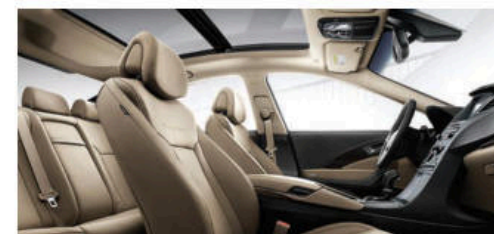
The car's fluid lines flow from its available LED foglights in front to hexagonal dual exhaust tips in back. Inside, Azera has the most front-seat legroom and front head room in its class.<sup>9</sup> It's space filled with standard features like a 12-way power driver's seat, heated and ventilated front seats, an Infinity Logic 7<sup>®</sup> premium audio system and an 8" touchscreen display with advanced navigation. Hyundai engineers did their part, too, with a smooth, quiet V6 engine that uses a SHIFTRONIC<sup>®</sup> 6-speed automatic transmission to make the most of its 293 horsepower.

Blind Spot Detection with Rear Cross-traffic Alert<sup>11</sup> and the available Forward Collision Warning<sup>12</sup> and Lane Departure Warning<sup>13</sup> systems are premium safety features Azera shares with our Equus and Genesis luxury sedans. Ditto brand new features like an Electronic Parking Brake with automatic vehicle hold and Smart Cruise Control with stop/start.<sup>14</sup> Hyundai Blue Link, our innovative connected car solution that combines safety, car care, remote functionality and infotainment into one dynamic package, is also onboard.

293 HP | 29 MPG  
3.3L | HWY



**REFINED SUSPENSION** Azera's advanced multi-link rear suspension is paired with SACHS<sup>®</sup> Amplitude Selective Damping shock absorbers to create the balance of refined ride and precise handling normally reserved for higher-priced luxury sport sedans.



**PASSENGER PREMIUMS** Azera's refined interior is covered in supple leather and filled with conveniences like an Integrated Memory System for the driver's seat that sets preferred seat, side mirror and steering column positions. An available ambient lighting system enhances the mood even more with soft light at night.

**SPLIT TOUCHSCREEN** Navigation and audio functions can be displayed at the same time. An advanced navigation system includes voice control and junction view lane guidance, while the 8" touchscreen also serves as a monitor for Azera's rearview camera, featuring a parking guide that helps when backing into and out of parking spaces.





SONATA SPORT 2.0T in Symphony Silver

2016 HYUNDAI

# SONATA

## WITH SONATA, THE FACTS SPEAK FOR THEMSELVES. RATHER LOUDLY.

What's the secret to the continued success of our Sonata? Well, compared to other midsize sedans, Sonata is bigger. It has best-in-class interior volume and more front head room and legroom than its competitors.<sup>9</sup> In fact, Sonata is so roomy, it's the only car in its competitive set that has earned a Large Car classification by the EPA.

Sonata is also sleeker, with a dynamic Fluidic Sculpture design that achieves the lowest drag coefficient of any non-hybrid in the midsize segment. Sonata is smarter, too, with a standard rearview camera and features like Android™ Auto that use the latest technologies.<sup>15</sup> And Sonata thinks premium features like ventilated front seats and a panoramic sunroof shouldn't be exclusive to luxury sedans.<sup>16</sup>

Sonata thinks safety first. Its IIHS Top Safety Pick rating<sup>17</sup> is enhanced by an array of available accident-avoidance technologies. Hyundai's Blue Link Connected Care Package<sup>18</sup> adds Automatic Collision Notification, SOS Emergency Assistance and a variety of other features – all backed by America's Best Warranty. The really tough decision is which Sonata – SE, Eco, Sport or Limited – to drive home.

185 HP | 38 MPG  
2.4L | HWY



**IT KNOWS YOU'RE THERE** Approach Sonata, and the door handle magically illuminates. Sonata's first-in-class, hands-free smart trunk automatically opens when you stand behind the vehicle for 3 seconds with the key fob in your pocket or purse.<sup>19</sup>



**SMART TECH** Sonata is the first car to offer Android Auto, which lets you intuitively tap into your Android smartphone's music, maps, messages and apps using voice commands, Sonata's center console touchscreen, or a button on the steering wheel.

**AUTOMATIC EMERGENCY BRAKING** New for 2016, AEB uses a camera and radar sensors to scan the area in front of your car. If a crash is imminent and the driver doesn't react, the system automatically intervenes with emergency braking to help prevent a collision.<sup>20</sup> In addition to an IIHS Top Safety Pick rating, our 2015 model also earned an NHTSA 5-Star Safety rating – a rating that satisfies some of the industry's most stringent testing.<sup>21</sup>





SONATA HYBRID LIMITED ULTIMATE PACKAGE in Graphite Blue Pearl

2016 HYUNDAI

# SONATA HYBRID AND PLUG-IN HYBRID

## BETTER FUEL EFFICIENCY IS ONLY THE BEGINNING.

The amount of room you'll enjoy as you slip behind the wheel of the new Sonata Hybrid or all-new Sonata Plug-In Hybrid is your first indication that these are no ordinary hybrids.<sup>3</sup> In fact, the new Sonata Hybrid has more total interior volume than any hybrid in its class, and our new Plug-In Hybrid has best-in-class passenger and cargo room.<sup>9</sup>

You also get more fuel efficiency. A new 2.0L GDI hybrid engine delivers an EPA-estimated 44 MPG on the highway,<sup>22</sup> while the all-new Sonata Plug-In Hybrid goes even farther with a 99 MPGe rating and a 27-mile all-electric range.<sup>23</sup> Accelerate, and you'll notice how natural it feels. That's our 6-speed SHIFTRONIC automatic transmission at work. It's a more consistent and linear driving experience compared to the continuously variable transmissions of our competitors' hybrids.

The enhanced cabin is luxurious, with standard proximity key entry, push-button start and dual automatic temperature control. Available features include a heated steering wheel and front seats that are both heated and ventilated. We even improved America's Best Warranty: The hybrid-related components are covered for 10 years or 100,000 miles with a lifetime hybrid battery warranty. No other car in its class can match that.

193 HYBRID NET HP | 44 HYBRID MPG HWY

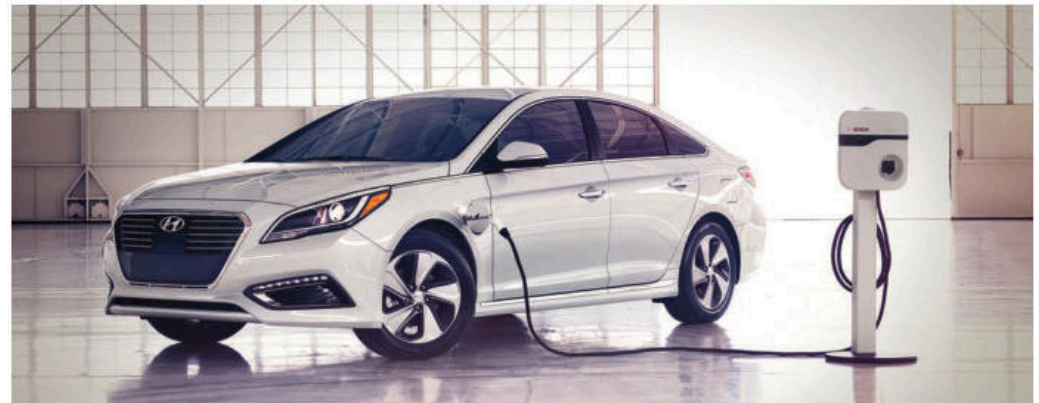


**REMOTE CHARGING** With our easy-to-use Blue Link app, you can use your smartphone to remotely start/stop or schedule the charging of your Sonata Plug-In Hybrid when it's plugged in.<sup>24</sup> You can also check the charge status of your car's battery system.



**HIGH BEAM ASSIST** Improve your road manners and your nighttime safety without lifting a finger. Available High Beam Assist automatically switches your headlights from high to low beams when an oncoming vehicle is detected by the forward-facing camera.

**FAST, POWERFUL CHARGING** It takes less than 3 hours to recharge the Sonata Plug-In Hybrid with a 240V power outlet. Using a conventional 120V power outlet takes under 9 hours. Plug in at night, and you'll be good to go in the morning. How far? The 9.8 kW lithium-ion polymer battery pack gives you an all-electric range of approximately 27 miles.





ELANTRA LIMITED ULTIMATE PACKAGE in Windy Sea Blue

2016 HYUNDAI

# ELANTRA

## NOW, IT'S EASY TO UPDATE YOUR STATUS.

Can a compact car expand your horizons? Can it be far from an ordinary small car, filled with the sort of premium features you'd only expect to find on luxury cars? It can, if it's a Hyundai Elantra.

Its exterior sculpts creases, character lines and curves for both aerodynamic efficiency and stunning visual impact. Inside, there's so much room for passengers and cargo, the EPA considers Elantra to be a midsize (the next-largest class above compact).

We've also expanded Elantra's robust standard feature sets in our Limited and all-new Value Edition models. And we engineered the 2016 Elantra with performance, safety and communications technologies so advanced, it's capable of doing things beyond any compact car you've ever owned.

Like what, you ask? For starters, each model earned an NHTSA 5-Star Overall Safety rating and was an IIHS Top Safety Pick in 2015. Elantra features Vehicle Stability Management with a Traction Control System that kicks in to help give you more control when you need it most.<sup>25</sup> Then, there's Hyundai Blue Link, our innovative connected car solution that helps make you – and your car – smarter.

145 HP | 1.8L | 38 MPG HWY



**ELANTRA SPORT** The driving force behind Elantra Sport? It's driving. With a 2.0L GDI engine, suspension and steering systems tuned for high performance, and a standard 6-speed manual transmission, Elantra Sport actively engages you in getting up to speed.



**ELANTRA LIMITED** Enter the cabin using your proximity key and settle into the heated leather seats. The premium features you'll find include Bluetooth hands-free phone, dual automatic temperature control, an available navigation system and a wealth of other technologies that satisfy demanding audio enthusiasts.

**ELANTRA GT** Step inside our 5-door hatchback, and you'll find two available features that aren't offered on other cars in its class – ventilated front seats and a panoramic sunroof. It backs that up with a performance-car feel (enhanced by a best-in-class power-to-weight ratio) and access to 51.0 cubic feet of maximum cargo volume.





VELOSTER TURBO in Matte Gray

2016 HYUNDAI

# VELOSTER

## SAMENESS HAS AN ENEMY. IT'S CALLED VELOSTER.

Hyundai Veloster is inspired not by other cars, but by high-performance street bikes. You can see it in the shapes that surround you behind the wheel. And feel it in the way Veloster uses its outstanding power-to-weight ratio and all-new, first-in-class 7-speed automatic Dual Clutch Transmission to accelerate, shift and handle with breathtaking quickness.

There are four distinct 2016 models – Veloster, Veloster Turbo, Turbo R-Spec and a new limited-production Rally Edition. Whichever one you call yours, expect two things you won't find on other compact sport coupes. First, there's an exclusive three-door design that makes it easy for rear passengers to join the fun. Second, Veloster has the most interior volume of any car in its class.<sup>9</sup> Fold the rear seats flat, and 34.7 cubic feet of space is readily accessible via the wide (and low) rear hatch opening.

For 2016, Veloster offers a new navigation and premium audio system that's got it all: An available 7" hi-res LCD touchscreen with swipe control functions and split-screen support. Advanced voice recognition with Siri Eyes Free integration.<sup>26</sup> And new SiriusXM features with Travel Link<sup>®</sup> enhancements that add movie times and fuel prices to existing traffic, stock, weather and sports data services.<sup>27</sup>

201 HP | 33 MPG  
1.6T | HWY



**TURBO TECH** Veloster Turbo's paddle shifters and 7-speed Dual Clutch Transmission let you tap-tap-tap your way through the translation of power to pavement. Torque Vectoring Control and sport-tuned steering help quicken your trip through the twisty bits.



**TURBO R-SPEC** Sharpen Veloster's performance edge with Turbo R-Spec, a model that adds more steering responsiveness, more aggressive suspension tuning and a short-throw shifter for the 6-speed manual. How does it feel? Something like "Booyah!"

**PREMIUM AUDIO SYSTEM** Hear your music loud and low, without distortion. Veloster Turbo comes standard with a 450-Watt Dimension<sup>®</sup> premium audio system that deploys 8 speakers (including an 8" subwoofer and an external amp) for ideal sound separation and clarity. Connection options let you play Xbox 360<sup>®</sup> in the comfort of your parked car.





ACCENT SE STYLE PACKAGE in Pacific Blue

"Highest Ranked Small Car in Initial Quality, Two Years in a Row"<sup>22</sup>

THE 2015 ACCENT



2016 HYUNDAI

# ACCENT

## SATISFACTION, DEFINED ON YOUR TERMS.

Look at the variety of vehicles we make, and you'll see it ranges from our Equus luxury sedan to our subcompact Accent. The common theme? All have an uncanny ability to perfectly satisfy the demands of their owners. Specifically, the demand for a well-engineered automobile that blends spirited performance and outstanding fuel efficiency with responsive driving pleasure. As well as the demand for a design so sophisticated, it feels like rolling sculpture. And for safety, comfort and convenience features that offer exceptional value for the money.

Now here's the surprising twist: Accent owners also demand size. They don't want an ordinary subcompact car. Which is why our 5-door Accent is designed with best-in-class cargo room with the seats up.<sup>9</sup> There's also more interior roominess than Chevy Sonic or Toyota Yaris. It's so spacious, the government actually moved Accent a "class-above" into the larger compact car segment.

So whether you jump into a 4-door Accent Sedan or a 5-door Accent Hatchback, the rewards of cavernous cargo space are yours to do with as you please. And isn't that the real definition of satisfaction?

137 HP | 1.6L | 38 MPG HWY



**38 MPG EFFICIENCY** GDI technology spritzes fuel directly into each cylinder for optimal combustion that gives Accent an EPA-estimated 38 MPG on the highway.<sup>28</sup> An available Active ECO feature helps improve fuel economy even more at the press of a button.



**PROJECTOR HEADLIGHTS WITH LEDs** On Accent Sport, you get the functional power and stylish pizzazz of projector beam headlights with LED accents. That's right, accents come standard on this Accent. And they're available on our SE Sedan, too.

**60/40 SPLIT REAR SEATING** Accent quickly converts its rear seating area when you need to carry more cargo than passengers. A 60/40 split rear seatback gives you the versatility to configure the cargo area for whatever's in your weekday or weekend plans. Even with the second-row seats up, Accent offers a refrigerator-esque 21.2 cubic feet of available space.





SANTA FE SPORT 2.0T ULTIMATE PACKAGE in Marlin Blue

2016 HYUNDAI

# SANTA FE

## URNS DAILY ROUTINE INTO A MINI-VACATION.

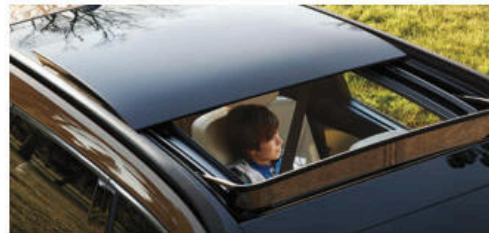
Are your family dynamics...well, dynamic? Then you'll appreciate how we offer our award-winning Santa Fe in three distinct configurations: The 5-passenger Santa Fe Sport, 6-passenger Santa Fe Limited and 7-passenger Santa Fe SE.

There's even a choice of three fuel-efficient engines – including Santa Fe Sport's available turbocharged 265-horsepower powerplant that ranks as one of the most powerful 4-cylinder engines in its class.<sup>9</sup> Santa Fe's 290-horsepower V6 offers a 5,000-pound towing capacity that doesn't break a sweat when towing watercraft, trail bikes or whatever satisfies your idea of pleasure and adventure.

And look what's on this list of available features: A panoramic sunroof and stylish 19" alloy wheels. Ventilated front seats, a heated steering wheel and second-row captain's chairs. Blind Spot Detection, Rear Parking Sensors and a hands-free smart liftgate that opens automatically.

Santa Fe also comes standard with safety features that include a host of advanced driving assist technologies. Not to mention the enhanced safety, car care and remote access features of our Blue Link connected car system.

290<sup>HP</sup><sub>3.3L</sub> | 25<sup>MPG</sup><sub>HWY</sub>

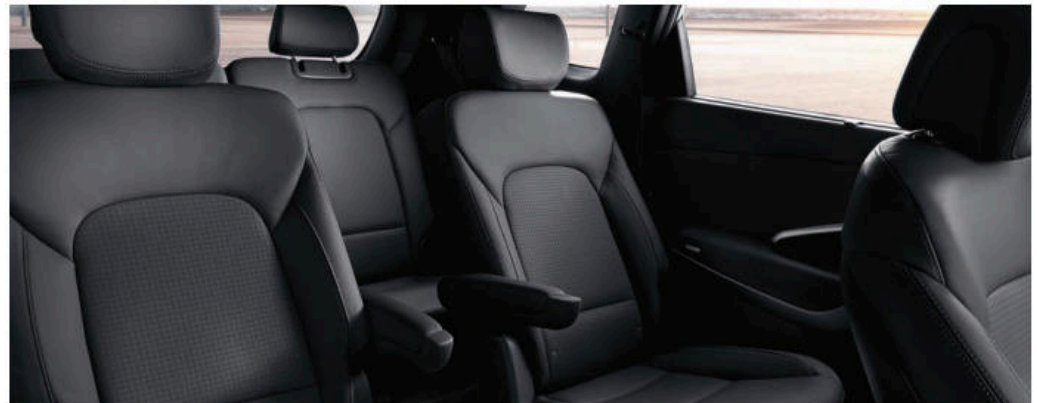


**PANORAMIC SUNROOF** Let light in and keep the elements out with an available panoramic sunroof. A huge expanse of glass covers the front and rear seating areas, affording everyone inside room with a view.



**ACTIVE CORNERING CONTROL AWD** By transferring engine torque to the rear wheels and applying braking force to the inside rear wheel, Santa Fe's Active Cornering Control AWD delivers improved traction and greater cornering capability in turns.

**SEATING FOR UP TO 7** Santa Fe SE and Santa Fe Limited have a longer wheelbase and add a third row. The 7-passenger Santa Fe SE lets you buckle three passengers into a second row of seats. In the 6-passenger Santa Fe Limited, a pair of leather-clad captain's chairs occupies the middle row.





TUCSON LIMITED ULTIMATE PACKAGE in Chromium Silver

2015 HYUNDAI TUCSON  
"Highest Ranked Small SUV in Initial Quality"<sup>2</sup>



2016 HYUNDAI

# TUCSON

## THIS IS HOW NEW GETS TO BE IMPROVED.

Meet the perfect partner for life's adventures: The all-new 2016 Tucson is everything you want from a premium Crossover Utility Vehicle. Want a quieter interior, so your weekend getaways are truly relaxing? The precise curvature of the Tucson's windshield pillars cuts wind noise in the cabin to practically nil. Want everyone in your road crew to enjoy the trip? Tucson's new interior feels wider and more spacious, with available ventilated front seats and heated rear seats.

How about a more seamless connection between what's on your phone and what's in your Tucson? It's simple, thanks to available technologies like Siri Eyes Free integration and apps like Pandora,<sup>®</sup> SoundHound and Yelp. Want cargo capacity that's easy to access? We gave Tucson a fully automatic hands-free smart tailgate that opens without requiring you to stand on one foot with your hands and arms full.

And we're certain you'll want this: A CUV so concerned for your safety, it's able to help keep you in your lane,<sup>29</sup> warn you when vehicles are in your blind spot and automatically brake in an emergency.<sup>30</sup> One thing we haven't changed? Our warranty – it's still America's Best.

175 HP | 33 MPG  
1.6T | HWY



**DYNAMIC BENDING LIGHT** The 2016 Tucson's available High Intensity Discharge headlights with Dynamic Bending Light turn their beams in the direction of the steering wheel, illuminating the road ahead as you drive through corners.



**VENTILATED AND HEATED FRONT SEATS** The all-new Tucson Sport and Limited's front seats are heated with three temperature settings – and the rear seats can be heated as well. Cooling ventilation is also available on Limited's front seats.

**A NEW TURBOCHARGED ENGINE** Standard on Eco, Sport and Limited models is a new 1.6L GDI 4-cylinder turbocharged engine. Its lighter, more compact turbine helps the engine's 175 horsepower and 195 lb-ft of torque respond quickly. It's frugal, too: Tucson Eco is optimized to deliver an EPA-estimated 33 MPG on the highway.<sup>28</sup>



## TUCSON FUEL CELL & SONATA PLUG-IN HYBRID

# NEW THINKING. NEW POSSIBILITIES.

Those four words are our company's slogan. And like any authentic company slogan, they are words we live by. You can see it in the vehicles that make up our 2016 model line, including two so special, they are not yet offered for sale in all 50 states.

Our latest breakthrough? The Tucson Fuel Cell electric vehicle. It's the next-generation of EV that uses a fuel cell to generate electricity from hydrogen.

It's powerful stuff. Because it's powered by hydrogen, Tucson Fuel Cell's only emission is water. When cruising, the vehicle is powered only by the fuel cell. Accelerate, and the vehicle is powered by both fuel cell and battery. And with

221 lb-ft of torque, our Tucson Fuel Cell offers impressive responsiveness with each prodding of the pedal beneath your right foot. It fully refuels in less than 10 minutes – and when fully refueled, Tucson Fuel Cell has an estimated range of up to 265 miles.

This year, in selected markets, we've also introduced our first Sonata Plug-In Hybrid. You can read more about this remarkable car on the preceding pages.

Both vehicles are part of what we call Hyundai Blue Drive. It's our way of leading the world to more fuel-efficient and environmentally sensitive vehicles. Who ever imagined four simple words could take us so far?

### TUCSON FUEL CELL

ZERO EMISSIONS



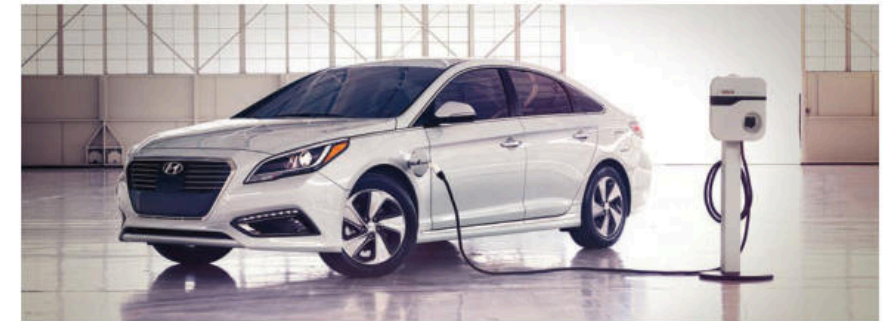
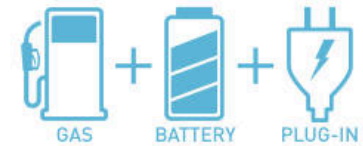
Tucson Fuel Cell has zero carbon emissions – its only emission is water



#### CHARGING / REFUELING TIME AND MILEAGE



### SONATA PLUG-IN HYBRID



#### PLUG-IN CHARGING PORT



#### 120V CHARGING CABLE



#### HYBRID TECH DISPLAY





**BLUE LINK: LIKE HAVING A CONCIERGE, TECHNICIAN AND SECURITY TEAM ALL BUILT INTO YOUR DASHBOARD.**



**REMOTE ACCESS**

With the Blue Link mobile app, your smartphone can start, lock and unlock your Hyundai remotely.<sup>31</sup> Looking for where you parked it after the concert or game? Use the app's Car Finder feature to navigate your way, or select "Horn & Lights" to flash the headlights and honk the horn when you're nearby.<sup>32</sup>

**FEEL SECURE**

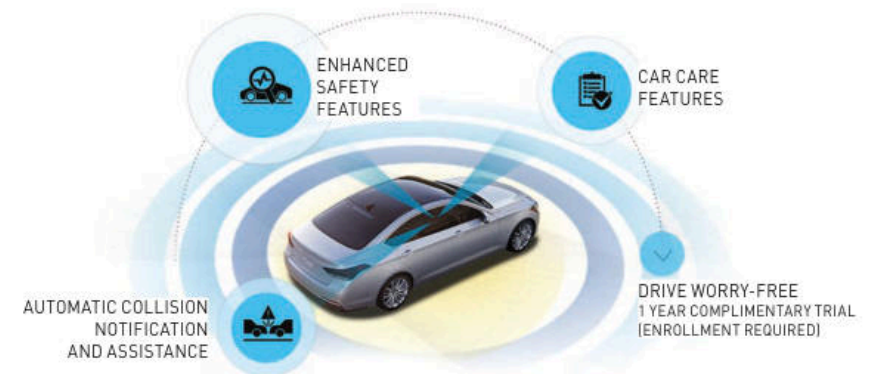
Someone borrow your Hyundai? Set geo-fence boundaries, speed preferences or curfew alerts and receive a text or email notification if they're exceeded. Dining out or enjoying a show? Valet Alert monitors your Hyundai's moves within a predefined boundary. And with our Stolen Vehicle Recovery technology, its location can be pinpointed, too.<sup>33</sup>

**EXPERT GUIDANCE**

Use voice commands to search for new restaurants in town or find addresses without having to type while you drive. Destination Search powered by Google™ locates an area's most up-to-date points of interest, day or night. Download search results directly to your navigation system for quick driving directions.

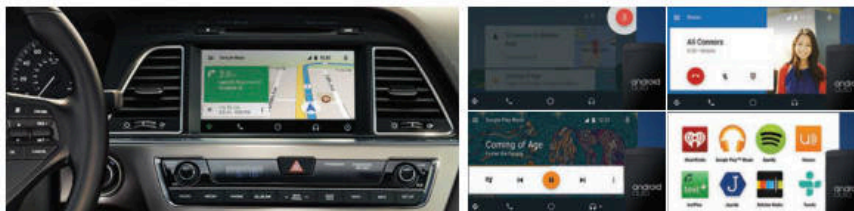
**BLUE LINK CONNECTED CARE: NOW MORE THAN EVER, HYUNDAI'S GOT YOUR BACK.**

Technically, convenience and peace-of-mind aren't listed as standard features. But you'd never know it, thanks to our Enhanced Roadside Assistance. Or Service Link, which makes it easy to schedule service appointments, even from your car. Making worry go away – with Blue Link Connected Care, it's a standard feature every Hyundai owner enjoys.<sup>18</sup>



**Assurance**

BLUE LINK CONNECTED CARE



**ANDROID™ AUTO: HERE'S WHERE YOUR PHONE REALLY GETS MOBILE**

Whether you're going across town or cross country, Hyundai makes it easy to stay connected to your digital life. The Hyundai Sonata is the first car to offer Android Auto, which features voice control designed specifically by Google™ for your driving needs. You can make calls or listen to voicemail and text messages. Quickly access your favorite music using popular apps, summon Google Maps for navigation, and more.<sup>15</sup>



GENESIS COUPE

EQUUS

GENESIS

## 2016 EQUUS

### HIGHLIGHTS AND AVAILABLE FEATURES

- 429 HP, 5.0L GDI V8 engine<sup>1</sup>
- 8-speed SHIFTRONIC<sup>®</sup> automatic transmission
- Electro-Hydraulic Power Steering
- Electronically controlled air suspension
- Proximity fob & card key entry w/ push-button start
- Heads-up Display & steering wheel haptic dial control
- Full 12.3" LCD instrument cluster display screen
- Smart Cruise Control w/ stop/start
- Integrated Driver Information System & multimedia controller
- Three zone automatic temperature control w/ air quality system
- Leather-wrapped dash & real wood interior trim
- Premium leather seating surfaces & microfiber suede headliner
- Heated and cooled front & rear seats

<sup>1</sup>420 HP with regular unleaded fuel

- Power rear seat head restraints w/ manual tilt adjustment
- Power lumbar on rear outboard seats
- Illuminated rear seat vanity mirrors
- Power rear side-window sunshades
- Illuminated door sill plates, inside door handles & door armrest
- Acoustic laminated windshield, front & rear side windows
- Hyundai Blue Link<sup>®</sup> connected car system
- Premium navigation system w/ 9.2" LCD screen
- Lexicon<sup>®</sup> 7.1 Discrete Surround Sound Audio System w/ 17 speakers
- Rear seat entertainment system w/ dual 9.2" displays
- Multi-view camera system
- Power trunk lid & door closure
- 19" alloy wheels

### SAFETY

- Vehicle Stability Management/pre-collision warning
- Electronic Stability & Traction Control Systems
- Electronic Parking Brake w/ automatic vehicle hold
- Electronic active front head restraints w/ power controls
- Electronic seatbelt pretensioners
- Adaptive Front Lighting System w/ auto-leveling headlights
- Lane Departure Warning
- Blind Spot Detection w/ Rear Cross-traffic Alert
- High Intensity Discharge headlights w/ LED turn signal indicators
- Forward-view cornering camera
- 9-airbag safety system
- Tire Pressure Monitoring System
- LED front fog lights

## 2016 GENESIS

### HIGHLIGHTS AND AVAILABLE FEATURES

- 311 HP, 3.8L GDI V6 or 420 HP<sup>1</sup> 5.0L GDI V8 engine
- 8-speed SHIFTRONIC<sup>®</sup> automatic transmission w/ paddle shifters
- Front and rear independent 5-link suspension
- Continuous Damping Control suspension
- Intelligent Drive Mode
- Proximity key entry w/ push-button start
- Heads-up Display
- 4.3" color LCD multi-information display
- Electroluminescent gauge cluster
- Smart Cruise Control w/ stop/start
- Dual-mode front vent control w/ CO<sub>2</sub> sensor
- Integrated Memory System

<sup>1</sup>407 HP with regular unleaded fuel

- Leather-wrapped steering wheel w/ haptic feedback
- 12-way power heated/ventilated front seats w/ power lumbar
- Premium leather seating surfaces
- Power rear windshield sunshade
- Genuine matte-finish wood trim & aluminum trim
- Rearview camera w/ parking guidelines
- Premium 9.2" touchscreen DIS navigation w/ HD display
- Lexicon<sup>®</sup> 17-speaker Discrete Logic 7<sup>®</sup> Surround Sound Audio System
- SiriusXM Travel Link<sup>®</sup> complimentary 3-year subscription
- Hyundai Blue Link<sup>®</sup> connected car system
- Hands-free smart trunk w/ auto-open
- Power trunk lid
- 18"/19" alloy wheels

### SAFETY

- Vehicle Stability Management
- Electronic Stability & Traction Control Systems
- Front and rear outboard seatbelt pretensioners
- Automatic Emergency Braking
- Pre-safety seatbelt
- High Beam Assist
- Lane Departure Warning
- Lane Keep Assist
- Blind Spot Detection & Rear Cross-traffic Alert
- High Intensity Discharge automatic headlights
- LED Daytime Running Lights
- 9-airbag safety system
- LED fog lights

## 2016 GENESIS COUPE

### HIGHLIGHTS AND AVAILABLE FEATURES

- 348 HP, 3.8L GDI V6 engine
- 6-speed close-ratio manual transmission w/ carbon synchronizers or 8-speed SHIFTRONIC<sup>®</sup> automatic w/ paddle shifters
- Track-tuned suspension w/ low-velocity control dampers
- Torsen<sup>®</sup> limited-slip differential
- Front camber adjustment bolt
- Proximity key entry w/ push-button start
- Tilt-and-telescopic leather-wrapped steering wheel and shifter
- Power windows w/ auto-down/up
- Aluminum pedals
- Illuminated door sill plates
- Auto-dimming rearview mirror w/ HomeLink<sup>®</sup> transceiver and compass
- Automatic temperature control

- Seat belt guide
- Leather seating surfaces and heated front seats
- Power driver seat slide and power lumbar
- 360-Watt Infinity<sup>®</sup> premium audio system w/ 10 speakers
- Navigation system w/ 7" touchscreen and XM NavTraffic<sup>®</sup>
- Hyundai Blue Link<sup>®</sup> connected car system
- Bluetooth<sup>®</sup> hands-free phone integration w/ audio streaming
- Front seatback pockets
- Heated outside mirrors w/ turn signal indicators
- LED taillights
- Rear spoiler
- Power tilt-and-slide glass sunroof
- 18"/19" alloy wheels

### SAFETY

- Electronic Stability & Traction Control Systems
- Brembo<sup>®</sup> braking system
- 4-wheel disc Anti-lock Braking System
- Electronic Brake-force Distribution with Brake Assist
- Active front head restraints
- Hillstart Assist Control (M/T only)
- Rear Parking Sensors
- High Intensity Discharge Xenon headlights
- Automatic headlights w/ LED Daytime Running Lights
- 6-airbag safety system
- Tire Pressure Monitoring System
- Fog lights

## 2016 AZERA



### HIGHLIGHTS AND AVAILABLE FEATURES

- 293 HP, 3.3L GDI V6 engine
- 6-speed SHIFTRONIC® automatic transmission
- SACHS® Amplitude Selective Damping suspension
- Proximity key entry w/ push-button start
- Power tilt-and-telescopic steering wheel
- Smart Cruise Control w/ stop/start
- Dual zone automatic temperature control
- Leather seating surfaces
- Integrated Memory System for power driver seat, exterior mirrors & steering column
- Ventilated front seats & heated front/rear seats
- Power driver and front-passenger seats
- Hyundai Blue Link® connected car system
- Bluetooth® hands-free phone integration w/ phonebook transfer and audio streaming
- Floor console-mounted 2nd row vents
- 8" touchscreen navigation system
- 550-Watt Infinity® Logic 7® Surround Sound Audio System w/ 14 speakers & HD Radio™ technology
- Interior ambient lighting
- Power rear sunshade & manual rear side-window sunshades
- Panoramic tilt-and-slide sunroof
- Automatic headlight control w/ delay off feature
- Electronic Parking Brake w/ automatic vehicle hold
- Hands-free smart trunk w/ auto-open
- 18"/19" alloy wheels

### SAFETY

- Vehicle Stability Management
- Electronic Stability & Traction Control Systems
- Lane Departure Warning
- Forward Collision Warning
- Blind Spot Detection w/ Rear Cross-traffic Alert & Lane Change Assist
- Automatic High Beam Assist
- Rearview camera
- Rear Parking Sensors
- High Intensity Discharge Xenon headlights
- 9-airbag safety system
- Tire Pressure Monitoring System
- Daytime Running Lights w/ LED fog lights

## 2016 SONATA



### HIGHLIGHTS AND AVAILABLE FEATURES

- 185 HP, 2.4L GDI 4-cylinder engine
- 178 HP, 1.6L or 245 HP, 2.0L GDI 4-cylinder engine w/ twin-scroll turbocharger
- 6-speed SHIFTRONIC® automatic transmission or 7-speed EcoShift SHIFTRONIC® Dual Clutch Transmission *DCT Transmission requires 178 HP, 1.6L turbo engine*
- Proximity key entry w/ push-button start
- Electroluminescent gauge cluster w/ 4.2" color LCD multi-info display
- Smart Cruise Control w/ stop/start
- Heated steering wheel
- Dual zone automatic temperature control
- Integrated Memory System for power driver seat & exterior mirrors
- Leather seating surfaces
- 6-way power adjustable passenger seat
- Ventilated front seats & heated front/rear seats
- Manual rear side-window sunshades
- Hyundai Blue Link® connected car system
- AM/FM/SiriusXM®/ HD Radio™/CD/MP3 Audio System
- 7" touchscreen display audio or 8" touchscreen navigation system w/ Android™ Auto
- 400-Watt Infinity® premium speakers w/ subwoofer & amplifier
- 60/40 split-folding rear seats
- Auto-dimming rearview mirror w/ compass & HomeLink®
- Rear spoiler & LED taillights
- Electronic Parking Brake w/ automatic vehicle hold
- Hands-free smart trunk w/ auto-open
- Conventional or panoramic tilt-and-slide sunroof
- 16"/17"/18" alloy wheels

### SAFETY

- Vehicle Stability Management
- Electronic Stability & Traction Control Systems
- Automatic Emergency Braking
- Lane Departure Warning
- Blind Spot Detection w/ Rear Cross-traffic Alert & Lane Change Assist
- Automatic High Beam Assist
- Rearview camera
- Rear Parking Sensors
- High Intensity Discharge Xenon headlights
- 7-airbag safety system
- Tire Pressure Monitoring System
- Automatic headlights & LED Daytime Running Lights

## 2016 SONATA HYBRID & PLUG-IN HYBRID



### HIGHLIGHTS AND AVAILABLE FEATURES

- 2.0L GDI 4-cylinder hybrid engine
- 50 kW permanent magnet high-power density motor w/ 360V lithium-ion polymer battery system (PHEV)
- 38 kW permanent magnet high-power density motor w/ 270V lithium-ion polymer battery system (HEV)
- 6-speed SHIFTRONIC® automatic transmission
- Proximity key entry w/ push-button start
- Heated steering wheel
- Dual zone automatic temperature control
- Smart Cruise Control w/ stop/start
- Leather seating surfaces
- Ventilated front seats & heated front/rear seats
- 8-way power driver seat w/ lumbar support
- Auto-dimming rearview mirror w/ compass & HomeLink®
- 6-way power adjustable passenger seat
- Manual rear side-window sunshades (HEV only)
- Floor console-mounted rear vents
- Hyundai Blue Link® connected car system
- 8" touchscreen navigation system
- 400-Watt Infinity® premium audio system w/ 9 speakers & rear subwoofer
- Bluetooth® hands-free phone integration w/ phonebook transfer & audio streaming
- SiriusXM® Satellite Radio & HD Radio™ w/ multicasting
- 60/40 split-folding rear seats (HEV only)
- Electronic Parking Brake w/ automatic vehicle hold
- Hands-free smart trunk w/ auto-open
- Panoramic tilt-and-slide sunroof (HEV only)
- 16"/17" Eco-spoke alloy wheels

### SAFETY

- Vehicle Stability Management
- Electronic Stability & Traction Control Systems
- Forward Collision Warning
- Lane Departure Warning
- Blind Spot Detection w/ Rear Cross-traffic Alert & Lane Change Assist
- Automatic High Beam Assist
- Rearview camera
- Rear Parking Sensors
- 7-airbag safety system
- Tire Pressure Monitoring System
- Automatic High Intensity Discharge Xenon headlights

## 2016 ELANTRA & ELANTRA GT



### HIGHLIGHTS AND AVAILABLE FEATURES

- 173 HP (166 HP PZEV), 2.0L GDI 4-cylinder engine or 145 HP, 1.8L 4-cylinder engine
- 6-speed manual transmission or 6-speed SHIFTRONIC® automatic transmission w/ Active ECO System
- Motor Driven Power Steering w/ Driver Selectable Steering Mode
- Sport-tuned suspension
- Proximity key entry w/ push-button start
- Tilt-and-telescopic steering wheel
- Dual automatic temperature control
- Leather-wrapped steering wheel & shift knob
- Leather seating surfaces
- Power 6-way adjustable driver seat w/ lumbar support
- Ventilated front seats
- Heated front & rear seats
- Front aluminum entrance sills
- Aluminum sport pedals
- Hyundai Blue Link® connected car system
- 360-Watt premium audio w/ external amp
- 7" touchscreen navigation system & rearview camera
- Pandora® Internet radio (iOS only)
- HD Radio™ technology
- Apple® Siri Eyes Free
- Black chrome grille accents
- Side mirrors w/ integrated turn signal
- Power tilt-and-slide glass sunroof
- 16"/17" alloy wheels

### SAFETY

- Vehicle Stability Management
- Electronic Stability & Traction Control Systems
- 4-wheel disc Anti-lock Braking System w/ Brake Assist & Electronic Brake-force Distribution
- Hillstart Assist Control
- Driver blind spot mirror
- 6-airbag safety system
- 7-airbag safety system w/ driver's knee airbag (Elantra GT)
- Tire Pressure Monitoring System
- Daytime Running Lights
- Automatic headlights (Elantra GT)
- Projector headlights w/ LED accents
- Front fog lights

## 2016 VELOSTER



### HIGHLIGHTS AND AVAILABLE FEATURES

- 132 HP, 1.6L GDI 4-cylinder engine
- 201 HP, 1.6L twin-scroll turbo 4-cylinder engine
- 6-speed manual transmission
- 6-speed automatic or 7-speed EcoShift® Dual Clutch Transmission w/ paddle shifters
- Sport-tuned suspension & steering
- Torque Vectoring Control
- Proximity key entry w/ push-button start
- Driver auto-up window
- Automatic temperature control w/ auto defog
- Piano Black interior accents
- Leather-wrapped steering wheel & shift knob
- Leatherette bolster seats & door inserts
- Leather seating surfaces & driver lumbar support
- Bluetooth® hands-free phone w/ voice commands & audio streaming
- Hyundai Blue Link® connected car system
- 7" touchscreen navigation system & rearview camera
- Dimension® premium audio system w/ subwoofer & amplifier
- Pandora® Internet radio and Gracenote® Music ID
- SiriusXM Travel Link® (complimentary trial)
- Chrome grille trim w/ Piano Black accents
- Ground effects body kit
- Dual heated power side mirrors
- Rear LED taillights
- Power panoramic tilt-and-slide sunroof
- 17"/18" alloy wheels

### SAFETY

- Vehicle Stability Management
- Electronic Stability & Traction Control Systems
- 4-wheel disc Anti-lock Braking System w/ Brake Assist & Electronic Brake-force Distribution
- Hillstart Assist Control
- Driver blind spot mirror
- Backup warning sensors
- 6-airbag safety system
- Daytime Running Lights
- Tire Pressure Monitoring System
- Projector headlights w/ LED accents
- Automatic headlight control
- Front fog lights

## 2016 ACCENT



### HIGHLIGHTS AND AVAILABLE FEATURES

- 137 HP, 1.6L GDI 4-cylinder engine
- 6-speed manual transmission or 6-speed SHIFTRONIC® automatic transmission w/ Active ECO System
- Cruise control (A/T only)
- Motor Driven Power Steering
- Sport-tuned steering (Sport trim)
- Engine cover & hood insulator
- Remote keyless entry w/ panic alert
- Tilt steering wheel & 6-way adjustable driver seat
- One-touch triple turn signal
- Sliding sunvisors w/ vanity mirrors
- Air conditioning & cabin air filter
- Steering wheel audio & cruise controls
- Driver auto-up window
- Leather-wrapped steering wheel & shift knob
- Premium cloth seats
- 60/40 split fold-down rear seatback
- Chrome inside door handles
- Piano Black interior accents
- AM/FM/SiriusXM®/CD/MP3 audio w/ LCD illumination
- Bluetooth® hands-free phone integration w/ voice recognition & audio streaming
- Heated bodycolor power side mirrors
- Side mirrors w/ integrated turn signals
- Rear spoiler
- 16" alloy wheels

### SAFETY

- Vehicle Stability Management
- Electronic Stability & Traction Control Systems
- Anti-lock Braking System w/ Electronic Brake-force Distribution & Brake Assist
- Rear disc brakes
- Hillstart Assist Control
- Active front head restraints & adjustable head restraints for all seating positions
- Front seatbelt pretensioner
- Driver blind spot mirror
- 6-airbag safety system
- Projector headlights w/ LED accents
- Front fog lights

## 2016 SANTA FE



### HIGHLIGHTS AND AVAILABLE FEATURES

- 190 HP, 2.4L GDI 4-cylinder engine
- 265 HP, 2.0L GDI twin-scroll turbo 4-cylinder engine
- 290 HP, 3.3L GDI V6 engine
- 6-speed SHIFTRONIC® automatic transmission
- Proximity key entry w/ push-button start
- Dual zone automatic temperature control w/ CleanAir Ionizer
- Integrated Memory System
- Electroluminescent gauge cluster w/ color LCD trip computer
- Auto-dimming rearview mirror w/ compass & HomeLink®
- Leather seating surfaces
- Ventilated front seats & heated rear seats
- Manual rear side-window sunshades
- Rear-seat heating & air conditioning controls
- 2nd-row sliding 60/40 split seats w/ cargo-area releases
- Hyundai Blue Link® connected car system
- Navigation system w/ 8" touchscreen & rearview camera
- 550-Watt Infinity® Logic 7® Surround Sound Premium Audio System w/ 12 speakers
- Bluetooth® hands-free phone integration w/ voice recognition & audio streaming
- Rear spoiler w/ integrated LED brake light
- Hands-free smart liftgate w/ auto-open & adjustable height setting
- Chrome-tipped dual exhaust system
- Roof side rails
- Power panoramic tilt-and-slide sunroof
- 17"/18"/19" alloy wheels

### SAFETY

- Vehicle Stability Management
- Electronic Stability & Traction Control Systems
- Hillstart Assist/Downhill Brake Control
- Rear Cross-traffic Alert
- Lane Change Assist
- Blind Spot Detection System
- Rear Parking Assistance System
- High Intensity Discharge Xenon headlights
- 7-airbag safety system (includes driver's knee airbag)
- Tire Pressure Monitoring System w/ position pressure display
- Daytime Running Lights
- LED headlight accents
- Front fog lights

## 2016 TUCSON



### HIGHLIGHTS AND AVAILABLE FEATURES

- 164 HP, 2.0L GDI 4-cylinder engine
- 175 HP, 1.6L GDI 4-cylinder turbocharged engine
- 6-speed SHIFTRONIC® automatic transmission
- 7-speed EcoShift™ SHIFTRONIC® Dual Clutch Transmission
- Drive Mode Select (Normal, Eco, Sport)
- Proximity key entry w/ push-button start
- Electroluminescent gauge cluster w/ 4.2" multi-info LCD display
- Front & rear LED maplights
- Dual zone automatic temperature control w/ CleanAir Ionizer
- Rear air conditioning vents
- Premium instrument panel & driver console side panel
- Leather seating surfaces
- Ventilated front seats & heated rear seats
- Hyundai Blue Link® connected car system
- 8" navigation system w/ voice commands
- Rearview camera
- Premium 8-speaker audio system
- Bodycolor power & heated side mirrors
- Rear spoiler w/ integrated LED brake light
- Chrome accent grille & exterior door handles
- Roof side rails & premium side sills
- LED headlights & taillights
- Hands-free smart liftgate w/ auto-open & adjustable height setting
- Power panoramic tilt-and-slide sunroof
- Automatic projector headlights w/ LED accents
- 17"/19" alloy wheels

### SAFETY

- Vehicle Stability Management
- Electronic Stability & Traction Control Systems
- ABS w/ Electronic Brake-force Distribution & Brake Assist
- Automatic Emergency Braking w/ Pedestrian Detection
- Hillstart Assist/Downhill Brake Control
- Lane Departure Warning
- Rear Cross-traffic Alert
- Lane Change Assist
- Blind Spot Detection System
- Rear Parking Assistance System
- High Intensity Discharge headlights w/ Dynamic Bending Light
- Front, side & side-curtain airbags w/ rollover sensors
- Tire Pressure Monitoring System w/ position pressure display

## FOOTNOTES

- 1)** Only use Blue Link and corresponding devices when it is safe to do so. Blue Link subscription service agreement required. Features vary by subscription plan. Blue Link service works using CDMA-based cellular networks in the 50 United States. Blue Link service is not available where there is no cellular coverage, particularly in enclosed or remote areas. Service availability may be affected by signal strength, foliage, weather, topographical conditions (mountains) and nearby structures (tall buildings, tunnels) and other factors. For additional details and system limitations, visit [HyundaiBlueLink.com](http://HyundaiBlueLink.com).
- 2)** The Hyundai Tucson received the lowest number of problems per 100 vehicles among small SUVs in the proprietary J.D. Power 2015 Initial Quality Study<sup>SM</sup>. Study based on responses from 84,367 new-vehicle owners of 2015 model-year vehicles, measuring 244 models and measures opinions after 90 days of ownership. Proprietary study results are based on experiences and perceptions of owners surveyed in February-May 2015. Your experiences may vary. Visit [jdpower.com](http://jdpower.com).
- 3)** 2016 Sonata Plug-In Hybrid not available for sale in all 50 U.S. states.
- 4)** *Autoguide.com Auto News*, December 15, 2014. Class comparisons versus 2015 Audi A6, Cadillac CTS, Lexus GS, BMW 5-Series, Mercedes-Benz E-Class and Infiniti Q70.
- 5)** GOOD DESIGN™ is a Federally Registered and Protected Trademark of The Chicago Athenaeum Metropolitan Arts Press, Copyright 1992-2015.
- 6)** "Long-term 2015 Hyundai Genesis 3.8 sedan intro", February 18, 2015.
- 7)** Genesis equipped with available Automatic Emergency Braking. Top Safety Pick+ rating is based on a "Good" in the 31 mph side-impact crash test, 40 mph moderate overlap frontal crash test, 20 mph rear-impact test, roof strength testing, a "Good" or "Acceptable" in the 40 mph small overlap frontal crash test, and an "Advanced" or "Superior" rating for front crash prevention performed by the IIHS. For details, please visit [iihs.org](http://iihs.org).
- 8)** Remote Vehicle Start is only available for push-button start equipped vehicles with an automatic transmission. Not available on all models. Remote Climate Control is available on properly equipped models with fully automatic temperature control. Remote Stop is only available while the vehicle is in Remote Start mode.
- 9)** Competitive claims are based on comparisons of 2015-2016 model specifications on manufacturer websites at the time of printing.
- 10)** Not all Genesis Coupe models are equipped for racetrack driving. Please consult your authorized Hyundai dealer for appropriate trim and package options. Hyundai encourages all drivers to follow the rules of the road and safe driving practices at all times. Electronic Stability Control (ESC) cannot control your vehicle's stability under all driving situations. ESC is not a substitute for safe driving practices. No system, no matter how advanced, can overcome physics or correct poor driving. The driver is always responsible for controlling the vehicle and must use caution to avoid loss of control in all driving conditions. Speed, road conditions and driver steering input will affect whether ESC can help prevent loss of control. See Owner's Manual for details. The Genesis Coupe Anti-lock Braking System remains fully functional in all ESC modes to help drivers maintain steering control under adverse braking conditions.
- 11)** Do not rely completely on Blind Spot Detection (BSD) and be sure to use proper lane changing procedures. BSD may not detect every object or vehicle and will not prevent accidents. Never rely exclusively on the Rear Cross-traffic Alert. Always look over your shoulder and use your mirrors to confirm rear clearance. There are limitations to the function, detection, range and clarity of the system. VEHICLE MUST BE IN REVERSE AND HAS TO BE GOING 6 MPH OR LESS.
- 12)** Forward Collision Warning is intended to be a supplement to safe driving practices. The system is not designed to detect certain stationary objects such as trees or poles, and may not detect all vehicles under certain conditions. The system does not provide a braking function. The driver is responsible for being attentive and maintaining control of the vehicle and should not wait for the system's alerts before braking, as there may not be sufficient time to brake safely.
- 13)** Lane Departure Warning operates above approximately 44 mph and only when the lane markings are clearly visible on the road. It will not prevent loss of control. Refer to the Owner's Manual for further product details and limitations on all of these safety features.
- 14)** Smart Cruise Control (SCC) is not a collision avoidance or warning device. SCC is for highway use only and should not be used in poor weather, heavy or varying traffic, or on winding or slippery roads. The driver remains responsible to slow or stop the vehicle to avoid a collision.
- 15)** Android Auto works with smartphones enabled to run on Android 5.0 OS and above. Google, Android and Android Auto are registered trademarks of Google Inc.
- 16)** Ventilated front seats and panoramic sunroof available on Sonata Limited models.
- 17)** Top Safety Pick rating based on Insurance Institute for Highway Safety 40 mph moderate overlap frontal crash test, 31 mph side-impact test, 20 mph rear-impact test and roof strength testing. Test performed by the Insurance Institute for Highway Safety. For details, visit [iihs.org](http://iihs.org).

- 18)** Blue Link agents will contact existing emergency service responders. Only use Blue Link and corresponding devices when it is safe to do so. Blue Link Connected Care includes one year of the Blue Link Connected Care Package and requires an active Blue Link subscription. One-year term starts from the new vehicle date of first use and is available for new vehicle purchases and leases based upon terms and conditions on the Blue Link subscription enrollment pages. Cellular and GPS coverage is required.
- 19)** Available on Sonata Sport, standard on Sport 2.0T and Limited models.
- 20)** Automatic Emergency Braking (AEB) is designed to detect vehicles which have taillights directly in front of your vehicle. AEB will not detect objects other than cars. AEB initiates full braking at speeds between 5 and 50 mph. AEB is not a substitute for safe driving. See Owner's Manual for details and limitations.
- 21)** Government star ratings are part of the National Highway Traffic Safety Administration's (NHTSA's) New Car Assessment Program ([safercar.gov](http://safercar.gov)).
- 22)** The Hyundai Accent received the lowest number of problems per 100 vehicles among small cars in the proprietary J.D. Power 2014-2015 Initial Quality Studies<sup>SM</sup>. 2015 study based on responses from 84,367 new-vehicle owners of 2015 model-year vehicles, measuring 244 models and measures opinions after 90 days of ownership. Proprietary study results are based on experiences and perceptions of owners surveyed in February-May 2015. Your experiences may vary. Visit [jdpower.com](http://jdpower.com).
- 23)** MPGe is the EPA-equivalent measure of gasoline fuel efficiency for electric mode operation. Use for comparison purposes only. Mileage may vary depending on driving conditions, driving habits, the vehicle's condition, the age/condition of the lithium-ion battery and other factors.
- 24)** Blue Link subscription required. Vehicle needs to be plugged into a 120V or 240V electrical socket. See Owner's Manual for detailed specifications and limitations.
- 25)** The Traction Control System is meant to enhance conscientious driving habits and is not a substitute for safe driving practices.
- 26)** Siri is available on Apple® iPhone 4s or later, iPad with Retina display, iPad mini, and iPod touch (5th generation) and requires Internet access. Siri may not be available in all areas, and features may vary by area. Cellular data charges may apply. Siri, iPhone, iPad and iPod are registered trademarks of Apple Inc.
- 27)** SiriusXM Satellite Radio and SiriusXM Travel Link each require a subscription sold separately, or as a package, by Sirius XM Radio Inc. If you decide to continue service after your trial, the subscription plan you choose will automatically renew thereafter, and you will be charged according to your chosen payment method at then-current rates. Fees and taxes apply. To cancel, call us at 1-866-635-2349. See our Customer Agreement for complete terms at [siriusxm.com](http://siriusxm.com). All fees and programming subject to change. ©2015 Sirius XM Radio Inc. Sirius, XM and all related marks and logos are trademarks of Sirius XM Radio Inc.
- 28)** EPA estimates for comparison only. Mileage may vary. Your actual mileage will vary with options, driving conditions, driving habits and the vehicle's condition.
- 29)** Lane Departure Warning is available on Tucson Limited.
- 30)** Automatic Emergency Braking is available on Tucson Limited.
- 31)** Remote Vehicle Start is only available for push-button start equipped vehicles with an automatic transmission. Not available on all models. After Blue Link unlocks the doors, they will remain unlocked for 30 seconds. This auto relock is designed to enhance vehicle security by relocking the doors if the doors are not opened within 30 seconds.
- 32)** Smartphone GPS location must be within a 1-mile radius of the vehicle's location to display searched location.
- 33)** This feature is subject to adequate cellular coverage, signal strength, and battery power, and is only available in the 50 United States. You must be an active Blue Link subscriber or within the initial free trial period to receive Blue Link services.

## AMERICA'S BEST WARRANTY

### POWERTRAIN LIMITED WARRANTY

10 YEARS / 100,000 MILES

### ANTI-PERFORMANCE WARRANTY

7 YEARS / UNLIMITED MILES

### HYBRID SYSTEM COMPONENTS

10 YEARS / 100,000 MILES

### NEW VEHICLE LIMITED WARRANTY

5 YEARS / 60,000 MILES

### 24/7 ROADSIDE ASSISTANCE

5 YEARS / UNLIMITED MILES

### HYBRID BATTERY WARRANTY

LIFETIME

# HYUNDAI Full Line



Official Sponsor of the NFL

See dealer for LIMITED WARRANTY details. Fuel economy estimated by EPA for comparison only. Mileage may vary. While the information contained in this brochure was correct at the time of printing, specifications and equipment can change. Feature comparisons based on competitor information available at the time of printing. No warranty or guarantee is being extended in this brochure, and Hyundai reserves the right to change product specifications and equipment at any time without incurring obligations. Some vehicles are shown with optional equipment. Specifications apply to U.S. vehicles only. Please contact your Hyundai dealer for current vehicle specifications. As part of Hyundai's commitment to a responsible environment, this brochure was printed using paper certified by the Forest Stewardship Council® FSC® certification helps ensure that the highest social and environmental standards are met in the making of the paper we use, contributing to conservation, responsible management, and community-level benefits for people near the forests.



©2015 HYUNDAI NP020 02016A