

2018 Hyundai

IONIQ Electric





¹www.fueleconomy.gov/feg/topten.jsp. ²MPE is the EPA-equivalent measure of gasoline fuel efficiency for electric mode operation. Use for comparison purposes only. Mileage may vary depending on driving conditions, driving habits, the vehicle's condition, the age/condition of the lithium-ion polymer battery, and other factors. ³Claim based on comparison of specifications on manufacturer websites.

IONIQ Electric Limited in Ceramic White

2018 Hyundai IONIQ Electric

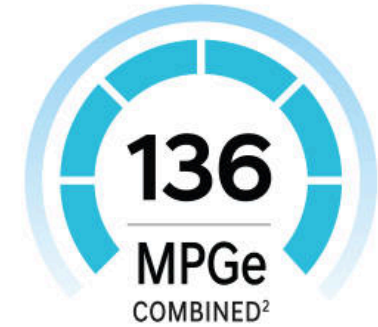
It's the most energy-efficient car in America. And maybe the most fun, too.

Meet the EV that has other electric vehicles green with envy. That's because the Hyundai Ioniq Electric ranks #1 on the list of most fuel-efficient cars in America.¹ Its EPA-estimated combined mileage is 136 MPGe,² the best of any battery-powered car.³ Ahead of Tesla. Ahead of Chevy Bolt. Ahead of all electric and plug-in vehicles.³

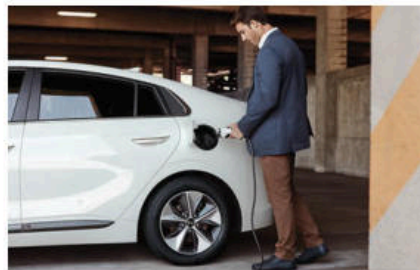
Yet for all of its energy-sipping and zero-emissions efficiency, Ioniq Electric is very much a performance vehicle. Its Blue Drive[®] electric motor is powered by a state-of-the-art lithium-ion polymer battery that generates 218 lb-ft of torque for instant acceleration. And the weight-saving design of its rigid body structure helps make the steering responsive and the handling precise.

Ioniq Electric is the alternative vehicle that offers real alternatives. Imagine the pleasure of never having to pull into a gas station to pump gas. Imagine driving a car that never needs a smog check. Or an oil change. A car that, because it produces no emissions, can be driven in California's HOV lanes even when you're not carpooling.

Imagine a car that's incredibly quiet, yet a blast to drive. Best of all, Ioniq Electric – like the Ioniq Hybrid and Ioniq Plug-in Hybrid – expresses a sleek, sporty style. In the Ioniq Electric, Hyundai designers achieved class-leading aerodynamics³ with a 0.24 drag coefficient, but did it with a shape that's sophisticated, not silly-looking. After all, what fun is driving one of those electric vehicles that look like some weird science project?



Home On The Range Ioniq Electric has an EPA-estimated range of 124 miles – higher than the Ford Focus Electric or Honda Clarity Electric.³ And Ioniq Electric's 136 combined MPGe rating is the EPA's all-time highest fuel-efficiency rating.¹



A Better Battery Ioniq Electric offers a quicker DC Fast Charge capability for its 28 kWh lithium-ion polymer battery system than its direct competitors (a 99-mile charge in 23 minutes with a 100 kW DC Fast Charge).³ On the road, the electric motor's instant torque thrusts Ioniq Electric down the road when passing or climbing hills.



Giving The Battery A Brake Ioniq Electric captures the energy created during braking and uses it to recharge the battery. The driver can control the level of regenerative braking using a control paddle to the left of the steering wheel to increase regeneration when braking. A paddle on the right decreases the level for a more natural feel when coasting.





Design Harmony

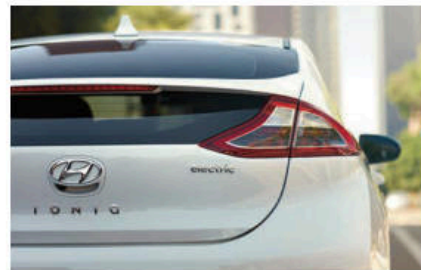
Who knew something so efficient could be so elegant?

Listen to Hyundai designers talk about creating the Ioniq Electric, and you'll hear the term 'Design Harmony'. It describes how contradictory ideas are beautifully balanced throughout the vehicle: A light yet rigid body. A compact exterior wrapped around a spacious interior. And a zero-emissions powertrain that's tons of fun to drive.

The unique design challenges of an electric vehicle start with the placement of the battery. In the Ioniq Electric, it's strategically placed below the rear seats, lowering the car's center of gravity for balanced and responsive handling. It also allows for significantly more cargo volume with the rear seats up than other eco-friendly vehicles such as the Chevy Bolt and Volt, Honda Clarity Electric, BMW i3, Toyota Prius Prime and Ford C-Max Energi.¹ There's also more front seat head room and leg room than Chevy Bolt, and more total interior volume than the Prius Prime, Bolt, Volt or Nissan Leaf!

You can see at a glance how the Ioniq Electric interior presents a sophisticated, clutter-free environment. What's less obvious is our designers' extensive use of eco-friendly materials – the most ever in a Hyundai. The soft touch interior elements are bio-plastic, with 25 percent of the material derived from sugar cane fibers. A unique mix of recycled plastic, wood powder and volcanic stone create elements that are 20 percent lighter, which helps improve performance dynamics.

Now that you've heard things from our designers' perspective, take a look up close – in person – and listen to your heart.



Got Your Back With America's Best Warranty, the 2018 Ioniq Electric has your back. It's got your front and sides, too, with an arsenal of available safety technologies that includes Automatic Emergency Braking with Pedestrian Detection,² Lane Keep Assist,³ and Blind Spot Detection with Lane Change Assist and Rear Cross-traffic Alert.⁴



A Better Climate Ioniq Electric's no-emission electric powertrain and eco-friendly exterior paints help address the Earth's climate. But what about the climate inside the car? To help preserve the environment you drive in, Ioniq Electric's interior includes heated front seats, automatic temperature control and an auto-defogging windshield.



Live It Up Ioniq Electric Limited is flush with premium amenities: Heated leather front seats with lumbar support and driver memory settings. A power sunroof, door handle welcome lights and LED interior illumination. It's also available with Smart Cruise Control, which automatically adjusts your cruising speed to match the traffic flow in front of you.⁵



¹ Claim based on comparison of specifications on manufacturer websites. ² Automatic Emergency Braking (AEB) with Pedestrian Detection detects pedestrians, but not in all conditions. AEB is designed to assist drivers to avoid, or reduce the severity of, collisions with cars that have slowed or stopped in front of them. It is a supplemental assist and does not replace the need for extreme care and attention by the driver. Automatic Emergency Braking may not stop the vehicle completely and will not avoid all collisions. See Owner's Manual for details. ³ Lane Keep Assist operates above approximately 44 mph and only when the lane markings are clearly visible on the road. It will not work under all circumstances and will not prevent loss of control. It is a supplemental assist, and does not replace the need for extreme care and attention by the driver. See Owner's Manual for details. ⁴ Do not rely completely on Blind Spot Detection (BSD) and be sure to use proper lane changing procedures. BSD may not detect every object or vehicle and will not prevent accidents. Rear Cross-traffic Alert (RCA) is active when the vehicle is in reverse gear and backing at a speed less than 6 mph. Never rely exclusively on RCA. Always look over your shoulder and use your mirrors to confirm rear clearance. Lane Change Assist provides an audible and visual alert if the turn signal is activated and another vehicle in the blind spot is sensed. There are limitations to the function, range, detection and clarity of these systems. See Owner's Manual for details. ⁵ Smart Cruise Control (SCC) is not a collision avoidance or warning device. SCC is for highway use only and should not be used in poor weather, heavy or varying traffic, or on winding or slippery roads. Driver remains responsible to slow or stop the vehicle to avoid a collision. SCC initiates a full stop when the traffic ahead stops and reengages if the vehicle ahead moves forward within 3 seconds. See Owner's Manual for details.

Connected Car Technologies

Seamlessly connect your life with your Hyundai? We've got an app for that.

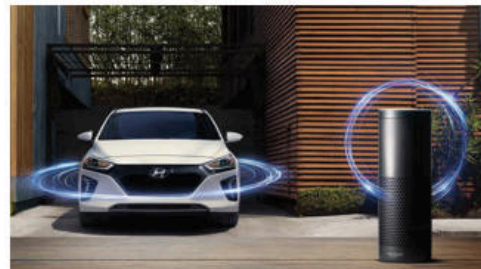
Welcome to Blue Link,[®] technology that forms a seamless connection between your home or office, your smartphone and your Hyundai. The MyHyundai with Blue Link App lets you monitor your car's battery levels and driving range, or set a charging time that takes advantage of lower off-peak electric rates.² Using your smartphone, smartwatch or web browser, you can lock/unlock your Ioniq's doors from virtually anywhere and remotely set the cabin temperature before you arrive. There's also a Car Finder feature that lets you locate your car at crowded stadiums or shopping malls.

Add Blue Link Guidance, and you can tap Destination Search Powered by Google™ to find new restaurants or points of interest that may not be updated yet on your car's maps, then send the destination from your smartphone to your Ioniq's navigation system.

Teenager borrowing the car? Geo-Fence, Speed and Curfew Alert features let you rest easy. And here's more peace of mind: Blue Link Connected Care. Free for the first three years of ownership, this comprehensive safety and car care package offers 24/7 SOS Emergency Assistance and Automatic Collision Notification that calls for help if you've been in an accident where the airbags deploy. On-demand Monthly Vehicle Health Reports help ensure your Ioniq runs in optimal condition.



Smartphones Made Smarter Seamlessly integrate your compatible smartphone's features with your car via Apple CarPlay™ (pictured above) or Android Auto.™ Both let you make calls and activate compatible apps, messaging and navigation using familiar voice commands or the car's touchscreen.³ You can also place your phone on Ioniq Electric's wireless charging pad and let it soak up the juice.



Ask Alexa and Google Assistant Blue Link's home assistant integration enables you to ask your Amazon Echo® or Google Home™ device to start charging your Ioniq's battery and lock the car doors while you watch TV. Or start your car and cool or heat the interior (including windshield defrosting) while you're packing a lunch (or, for the more talented among us, while brushing your teeth).²



Hyundai Blue Link[®]

What gives Ioniq owners a better connection to the things they need? Hyundai's award-winning Blue Link Connected Car System, which is now complimentary for the first 3 years of ownership.¹ For details on all of the Blue Link features offered, visit hyundaibluelink.com.

Available Blue Link Connected Car features include:

Connected Care

- Automatic Collision Notification
- SOS Emergency Assistance
- Charge Management
- Monthly Vehicle Health Reports
- Service Link
- On-Demand Diagnostics

Remote

- Remote Climate Control
- Remote Door Lock/Unlock
- Remote Horn and Lights
- Car Finder
- Alarm Notification
- Stolen Vehicle Slowdown/Recovery
- Valet/Geo-Fence/Speed/Curfew Alerts

Guidance

- Destination Search powered by Google™
- Destination Send-to-Car by Google

¹Blue Link is complimentary for the first 3 years of ownership and requires an active Blue Link subscription. Three-year term starts from the new vehicle date of first use and is available for new vehicle purchases and leases based upon terms and conditions on the Blue Link subscription enrollment pages. Only use Blue Link and corresponding devices when it is safe to do so. Cellular and GPS coverage is required. Features, specifications, and fees vary by subscription plan and are subject to change. For more on details and limitations, visit hyundai.com or your authorized Hyundai dealer. ²Requires Blue Link Remote package. ³Apple CarPlay works with iPhone 5 and later models running the latest version of iOS 7.1 and above. Apple is a registered trademark of Apple Inc. Android Auto requires the Android Auto app on Google Play and an Android-compatible smartphone running Android 5.0 Lollipop or higher. Google, Android, Android Auto, Google Play, Google Home, Google Assistant and other related marks are trademarks of Google Inc. Amazon, Alexa and all related logos and motion marks are trademarks of Amazon.com, Inc. or its affiliates.



2018 IONIQ Electric

Key Standard Features

- 88 kW (118 hp)/218 lb-ft, permanent magnetic electric motor with 28 kWh lithium-ion polymer battery system
- Push button drive selector
- Regenerative brake control paddles
- Hillstart Assist Control
- 16" Eco-spoke alloy wheels with 205/55R16 tires
- Aerodynamic front grille
- Automatic on/off projector headlights
- Integrated rear spoiler with LED Center High-Mount Stop Light
- LED taillights and Daytime Running Lights
- Solar control glass with windshield sunshade band
- Proximity Key entry with push button start
- Power door locks and windows with driver's auto-down/up
- Tilt-and-telescopic steering wheel with audio, phone and cruise controls
- 7" TFT LCD instrument cluster
- Automatic temperature control
- 6-way adjustable driver seat including height adjustment
- Leather-wrapped steering wheel
- Heated side mirrors
- Heated front seats
- 60/40 split-folding rear seats
- Chrome interior door handles
- Rear center armrest with cup holders
- Center console with storage compartment and armrest
- Rearview camera with dynamic parking guidelines
- 7" high-resolution color touchscreen display audio
- Android Auto™ and Apple CarPlay™ support
- Bluetooth® hands-free phone system with phonebook transfer and wireless audio streaming
- Smartphone/USB auxiliary input jacks
- SiriusXM® Satellite Radio and HD Radio™ Technology
- Blue Link® Connected Car System (3 year complimentary service)
- Vehicle Stability Management
- Tire Pressure Monitoring System with individual tire indicators
- 7-airbag safety system with driver's knee airbag
- Electronic Parking Brake
- Driver blind spot mirror
- Aero wiper blades

Performance and EPA Mileage Estimates (City/Highway/Combined)

Model	Net Horsepower/Torque ¹	Mileage Estimates
IONIQ Electric	88 kW (118 HP)/218 lb-ft	150/122/136 MPGe

¹Electric Motor



2018 IONIQ Electric Limited

IONIQ Electric Standard Features plus:

- + Automatic Emergency Braking with Pedestrian Detection
- + Lane Keep Assist
- + Blind Spot Detection with Lane Change Assist and Rear Cross-traffic Alert
- + HID Xenon headlights with Dynamic Bending Light and LED light guide
- + Power-folding side mirrors with turn signal indicators and puddle lights
- + Chrome exterior door handles
- + Smart Cruise Control with start/stop
- + Power tilt-and-slide sunroof
- + Leather seating surfaces
- + 10-way power driver seat with lumbar support
- + Integrated Memory System for driver seat
- + Auto-dimming rearview mirror with compass and HomeLink®
- + Floor console-mounted rear vents
- + LED interior lighting
- + Power front passenger window with auto-down/up
- + Premium door sill plates
- + 8" high-resolution color touchscreen navigation
- + Infinity® Premium Audio System with 8 speakers and Clari-Fi™ Music Restoration Technology
- + Qi™ wireless device charging

Exterior Dimensions

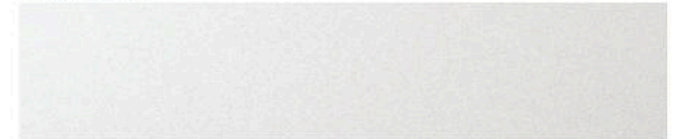
	IONIQ Electric
• Wheelbase	106.3 in
• Overall Length	176.0 in
• Overall Width (excluding mirrors)	71.7 in
• Overall Height	57.1 in
• Coefficient of Drag	0.24 Cd

Interior Dimensions

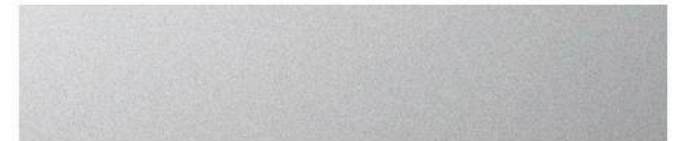
	IONIQ Electric
• Head Room, front (w/sunroof)/rear	39.1(38.2)/37.4 in
• Leg Room, front/rear	42.2/35.7 in
• Shoulder Room, front/rear	56.1/55.0 in
• Hip Room, front/rear	53.8/52.9 in

Exterior Colors

Ceramic White



Symphony Air Silver



Electric Blue Metallic



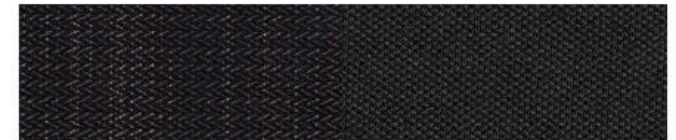
Black Noir Pearl



Interior Colors

Charcoal Black Cloth

IONIQ Electric



Charcoal Black Leather

Limited





Hope makes every Hyundai better.

Every time we sell a Hyundai, a portion goes to Hyundai Hope on Wheels® to help find a cure for childhood cancer. Over the last 19 years, Hyundai Hope On Wheels has donated more than \$130 million. Hope is our greatest feature. And it comes standard on every Hyundai. For more information, please visit HyundaiHopeOnWheels.org.

America's Best Warranty

Powertrain Limited Warranty	New Vehicle Limited Warranty	Anti-Perforation Warranty	24/7 Roadside Assistance	Hybrid/Electric Battery Warranty
10 years	5 years	7 years	5 years	
100,000 miles	60,000 miles	UNLIMITED miles	UNLIMITED miles	LIFETIME

 **HYUNDAI**
Assurance
HYUNDAIASSURANCE.COM

Our commitment to Hyundai owners doesn't end with the transfer of keys. Wherever the road takes you, we've got you back with Hyundai Assurance – an umbrella of services and benefits that includes America's Best Warranty, 24/7 Roadside Assistance, innovative safety and car care features...and more.



See dealer for Limited Warranty details. Fuel economy estimated by EPA for comparison only. Mileage may vary. While the information contained in this brochure was correct at the time of printing, specifications and equipment can change. Feature comparisons based on competitor information available at the time of printing. No warranty or guarantee is being extended in this brochure, and Hyundai reserves the right to change product specifications and equipment at any time without incurring obligations. Some vehicles are shown with optional equipment. Specifications apply to U.S. vehicles only. Please contact your Hyundai dealer for current vehicle specifications. As part of Hyundai's commitment to a responsible environment, this brochure was printed using paper certified by the Forest Stewardship Council®. FSC® certification helps ensure that the highest social and environmental standards are met in the making of the paper we use, contributing to conservation, responsible management and community-level benefits for people near the forests.

