

2022

IONIQ



The journey to a better world starts with the best.

'Going green' used to mean driving some odd-looking thing that signaled your eco-consciousness to the world, but lacked the space and performance you want in a four-door sedan. Then Hyundai changed the game with Ioniq, proving that alternative fuel vehicles can also be stylish. Roomy. And flush with technologies that help make your journeys safer – while keeping you plugged into your hyper-connected life on the go.

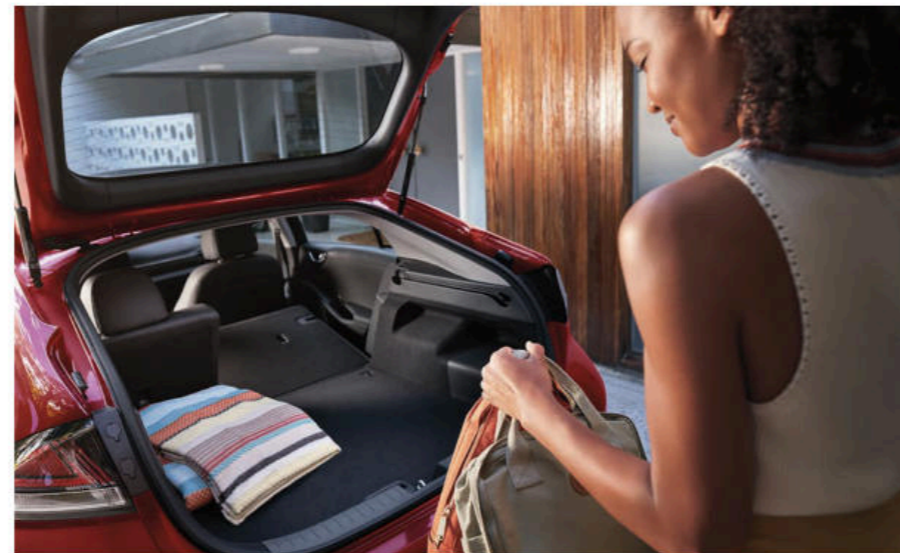
Ioniq delivers the efficiency you need – and the engaging performance you desire – on your terms. Breaking through the bland, its sleek aerodynamic silhouette projects a bold sense of style, highlighted by the jewel-like dazzle of available LED headlights and taillights.

Step inside Ioniq, and the upscale treatment is everywhere you look. The dash and center

console design include ultra-modern touch-type climate controls and a digital instrument cluster display. Hyundai Bluelink,[®] our award-winning connected car technology, is also available to seamlessly sync your digital life with your car.¹

So what happens when you create a better solution? For starters, you earn accolades. The 2021 Hyundai Ioniq was named Best Hybrid Car of 2021 by *U.S. News & World Report*, which also awarded the 2021 Ioniq Plug-in Hybrid as the Best Plug-In Hybrid in America.²

But more important than winning awards, you also win a lot of hearts and minds. Consider this: For the 12th year in a row, Hyundai is the automotive brand that ranks #1 in customer loyalty according to the Brand Keys Customer Loyalty Engagement Index.³



Kelley Blue Book
KBB.COM
The Trusted Resource

2021 Ioniq Hybrid Blue
Most fuel-efficient hybrid in America⁴

¹The 2021 Hyundai Ioniq includes 3 years of the Bluelink Connected Care, Remote and Guidance (factory-equipped navigation required) packages. All trials require an active Bluelink subscription agreement subject to the Connected Services Terms and Conditions. Three-year term starts from the new vehicle date-of-first-use, is available for new vehicle purchases and leases, and is transferable to subsequent owners subject to the Terms and Conditions. Only use Bluelink and corresponding devices when safe to do so. Cellular and GPS coverage is required. Features, specifications and fees are subject to change. For more on details and limitations, visit HyundaiUSA.com or your authorized Hyundai dealer. ²U.S. News & World Report, "Best Hybrid, Plug-In, and Electric Cars of 2021", April 2021. View more U.S. News Best Cars at cars.usnews.com. ³Based on 2010, 2011, 2012, 2013, 2014, 2015, 2016, 2017, 2018, 2019, 2020 and 2021 Brand Keys Customer Loyalty Engagement Index. ⁴From "Most Fuel Efficient Hybrids of 2021" on Kelley Blue Book's KBB.com. Kelley Blue Book is a registered trademark of Kelley Blue Book Co., Inc.



IONIQ Plug-in Hybrid Limited in Amazon Gray

¹2021 IONIQ Hybrid Blue: 58 City/60 Hwy/59 Combined MPG. Most fuel-efficient hybrid in America claim based on EPA-estimated combined MPG. Comparison excludes plug-in hybrids and electric vehicles. All figures are EPA estimates for comparison only. Actual mileage will vary with options, driving conditions and habits, vehicle and battery's condition and other factors. ²2021 IONIQ Plug-in Hybrid's estimated 620-mile total driving range is based on a fully charged battery and a full tank of gas. The estimated 29-mile all-electric range is based on a fully charged battery pack and 119 combined MPGe. MPGe is the EPA-equivalent measure of gasoline fuel efficiency for electric-mode operation. All figures are EPA estimates for comparison purposes only. Actual range and mileage will vary with options, driving conditions and habits, the vehicle and battery's condition and other factors.

More smiles per mile.

With 59 combined MPG, Ioniq Hybrid Blue is rated by Kelley Blue Book's KBB.com as the most fuel-efficient hybrid in America – eclipsing the competition for the second year in a row.¹ Its plug-in hybrid sibling combines the benefits of electric and hybrid powertrains to deliver an estimated 620-mile total driving range. Recharge Ioniq Plug-in Hybrid using a charging station or wall outlet, and its bigger battery pack provides an estimated 29 miles of all-electric range. Then, it switches to hybrid mode with an estimated 52 MPG in combined city/highway driving.²

Control paddles on Ioniq's steering wheel are available to adjust the amount of energy captured during regenerative braking. You can increase it for maximum regeneration to help extend your driving range, or decrease it to create a smoother, more natural feel during deceleration and downhill coasting. Even the smart air conditioning system helps boost performance: Setting it to 'Driver Only' mode reduces the load of air conditioning and heating on the overall powertrain, so there's more power to propel you.

And if that's not reason enough to break into a big smile, Ioniq is also a blast to drive. Every model includes Drive Mode Select. Put it in Sport mode, and Ioniq adjusts the response of its engine, steering and shifting for a more dynamic level of performance.



2021 Best Hybrid and Plug-in Hybrid Cars

"Hyundai had the most wins of any brand, winning the Best Plug-In Hybrid award with the 2021 Ioniq Plug-in Hybrid and the Best Hybrid Car award with the 2021 Ioniq Hybrid." – U.S. News & World Report



IONIQ Hybrid Limited in Scarlet Red Pearl



Regenerative brake-level control paddles



Plug-in Hybrid charging port



7" LCD instrument cluster – Sport mode



7" LCD instrument cluster – Eco mode



IONIQ Hybrid Limited in Charcoal Black Leather

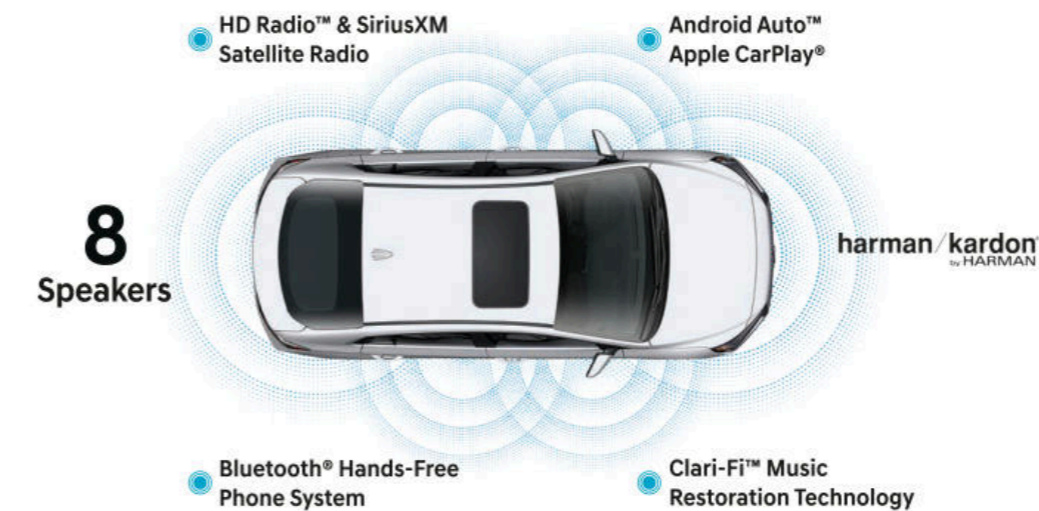
Let the good times roll.

Inside Ioniq, life is good. Your comfort and convenience start with heated front seats¹ and automatic temperature controls. Apple CarPlay[®] and Android Auto[™] come standard² – the only question is whose songs get played? Whichever playlist it is, stay tuned: An 8-speaker Harman Kardon[®] premium audio system is available, complete with Clari-Fi[™] Music Restoration Technology that returns compressed audio files to their true, full sound.

That soft touch you feel when you run your hand across Ioniq's armrest? It's the result of an innovative bio-materials process Hyundai pioneered. To create Ioniq's luxurious interior surfaces, we used recycled plastics, powdered wood, volcanic stone and sugarcane fibers.

Ioniq's modern design and innovative features are things you'll want to share. That's why we gave it so much overall interior room. Compare it with the competition, and you'll see Ioniq won't make you compromise on spacious comfort for you and your passengers. Want to be even more popular with your traveling companions? Consider available features like a power sunroof, wireless charging pad³ and console-mounted rear air vents.

To help you drive and arrive safely, an 8" touchscreen in the center console displays images from Ioniq's rearview camera. There's also an available 10.25" navigation system with split-screen display, junction view lane guidance and real-time traffic data that doesn't require a subscription fee.



IONIQ Plug-in Hybrid Limited in Charcoal Black Leather



Power-folding side mirrors



10.25" touchscreen navigation display



Dual automatic temperature controls



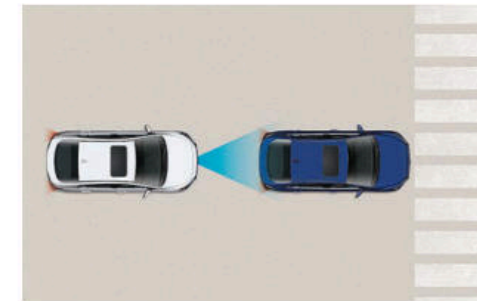
Power driver seat Integrated Memory System

¹Standard on Ioniq Plug-in Hybrid and available on Ioniq Hybrid. ²Apple CarPlay works with iPhone 5s, iPhone 5c, iPhone 5 and later models running the latest version of iOS 7 and above. Apple is a registered trademark of Apple Inc. Android Auto™ is compatible with Android™ phones running Android 5.0 or higher. Android Auto may not be available on all devices and is not available in all countries or regions. Additional apps may be required. Android and Android Auto are trademarks of Google LLC. ³Qi wireless charging function is based on smartphone compatibility and/or specific accessory cases.

Hyundai SmartSense: Welcome to the circle of trust.

How do you safeguard against the hazards all around as you drive? With Hyundai SmartSense, our comprehensive suite of advanced safety and driver-assist technologies.¹ Imagine the peace-of-mind that comes from innovative features like Forward Collision-Avoidance Assist,² Driver Attention Warning³ and High Beam Assist – all standard on every Ioniq model. Other SmartSense technologies are available to help protect you at all angles – front, side and rear.

Smart Cruise Control with Stop & Go⁴ helps you negotiate the traffic ahead. Lane Following Assist⁵ and Blind-Spot Collision Warning⁶ help protect your flanks. Then, there's Highway Driving Assist,⁷ which automatically helps keep you centered in your lane while traveling at a safe cruising distance from the vehicle ahead. So you're always at the center of the 360-degree circle of trust.



Forward Collision-Avoidance Assist

When the front-facing camera and/or radar detect a vehicle, cyclist or pedestrian in your path, Ioniq warns you of a potential collision. If it determines you have not started braking in time to stop safely, the system will automatically apply emergency braking.



Rear Cross-Traffic Collision Warning

Backing out of a parking space and wondering whether there's cross traffic coming your way? This feature helps warn you if another vehicle is detected to be approaching from the side by issuing visual and audible alerts.⁸



Parking Distance Warning – Forward & Reverse

Need help parking? Guidelines on your Ioniq's rearview camera display showing your intended path bend to reflect turns of the steering wheel. Available ultrasonic sensors in the front and rear bumpers gauge the distance to nearby objects and trigger audible alerts as you approach them.⁹

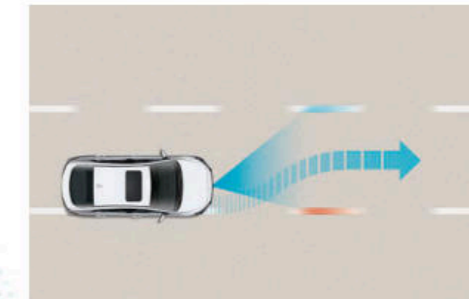
<< SmartSense Around Town

SmartSense On The Highway >>



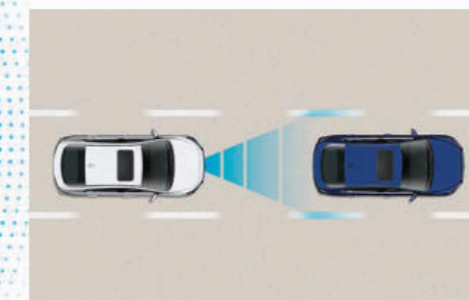
Blind-Spot Collision Warning

If your Ioniq detects a vehicle in your blind spot while the turn signal is on, this available feature warns the driver with a visual alert. If you try to change lanes in this situation, an audible warning sounds to help you avoid a collision.



Lane Following Assist

Using the front-facing camera to detect lane markers on the road, this feature assists the Ioniq driver by applying gentle corrective steering to help keep the vehicle centered in its lane.



Highway Driving Assist

Acting as your co-pilot on the highway, this available feature helps keep you centered in your lane while maintaining a set cruising speed and distance from the vehicle in front. It also uses navigation map data to automatically adjust for changing speed limits.

¹ Standard and available safety features vary by model and trim level. See the Features section in the back of this brochure or visit HyundaiUSA.com for details regarding specific safety feature availability. ² Forward Collision-Avoidance Assist (FCA) is designed to assist drivers to avoid, or reduce the severity of, collisions with cars that have slowed or stopped in front of them. It is a supplemental assist and does not replace the need for extreme care and attention by the driver. FCA may not stop the vehicle completely and will not avoid all collisions. Pedestrian Detection helps detect pedestrians, but not in all conditions. See Owner's Manual for details and limitations. ³ It is the driver's responsibility to remain alert at all times. Driver Attention Warning is only a warning to inform the driver of a potential lack of attention or drowsiness. It does not detect and provide an alert in every situation. See Owner's Manual for details and limitations. ⁴ Smart Cruise Control with Stop & Go (SCC) is not a collision-avoidance or warning device. SCC is for highway use only and should not be used in poor weather, heavy or varying traffic, or on winding or slippery roads. The driver remains responsible for slowing or stopping the vehicle to avoid a collision.

SCC initiates a full stop when the traffic ahead stops and reengages if the vehicle ahead moves forward within 3 seconds. See Owner's Manual for details and limitations. ⁵ Lane Following Assist (LFA) can help keep your vehicle centered in its lane when the lane markings are clearly visible on the road. LFA will not work under all circumstances and will not prevent loss of control. LFA is a supplemental assist and does not replace the need for extreme care and attention by the driver. See Owner's Manual for details and limitations. ⁶ Blind-Spot Collision Warning (BCW) assists the driver by warning of other cars detected in the blind-spot region. There are limitations to the function, range, detection and clarity of the system. It will not detect all vehicles or objects in the blind spot. BCW may not operate if sensors are obscured in any way. Do not rely exclusively on BCW. BCW is a supplemental system, and the driver must be attentive and exercise caution when driving. It is important to always signal, look over your shoulder and through your mirrors before changing lanes. See Owner's Manual for details and limitations. ⁷ Highway Driving Assist (HDA) is for highway use only and helps keep your vehicle centered in its lane while maintaining a safe distance from the vehicle ahead. Lane markings must be clearly visible on the road. HDA should not be used in poor weather, heavy or varying traffic, or on winding or slippery roads. HDA will not work under all circumstances and will not prevent loss of control. Driver remains responsible to slow or stop the vehicle to avoid a collision. See Owner's Manual for details and limitations. ⁸ Rear Cross-Traffic Collision Warning (RCCW) is active when the vehicle is in reverse gear and backing at a speed less than 6 mph. It only engages during the first activation of reverse gear from park and may not detect all vehicles, depending on the size, angle, distance and speed of the other vehicle. Never rely exclusively on RCCW. Always look over your shoulder and use your mirrors to confirm rear clearance. See Owner's Manual for details and limitations. ⁹ Parking Distance Warning – Forward & Reverse (PDW) can alert the driver to a potential hazard by providing an audible warning. Never rely exclusively on PDW, as it may not provide alerts in all conditions. Always look over your shoulder and use your mirrors to confirm rear clearance. See Owner's Manual for details and limitations.



Take your world with you.

To keep you plugged into your digital life on the go, Ioniq is available with Hyundai Bluelink,¹ complimentary for your first three years.¹ Bluelink's array of connected car services offers security on the road – and convenience on the go. Using the MyHyundai app on your smartphone, smartwatch or Amazon Echo[®]/Google Home[™] device,² you can remotely unlock your Ioniq's doors, start the engine and climate controls – even activate the available heated front seats – while you're getting ready to leave.³

Want to remotely check and see how much fuel you've got in the tank? Simply consult your MyHyundai app. Ioniq Plug-in Hybrid owners can even check their vehicle's battery level remotely.³ You can also receive Monthly Vehicle Health Reports and reminders for service check-ups, control your Ioniq Plug-in Hybrid's charging remotely, and more. Of course, Bluelink is just one of the many ways Hyundai helps make your digital life seamless.

Wired or wireless, Apple CarPlay[®] and Android Auto[™] sync your smartphone with your Ioniq's large color touchscreen display for easy access to contact lists, texts, calls, maps and navigation, your music library and more – ensuring the smarts of your smartphone travel with you wherever you go. Wireless device charging is also available – like those dual front USB charging ports, you'll wonder how you ever got along without it.



Remote Vehicle Controls

Use your smartphone, home assistant or wearable device to remotely start Ioniq's engine, unlock the doors, set the cabin temperature and more.



Vehicle Charging Dashboard

Find nearby charging stations, control Ioniq Plug-in Hybrid's charging remotely and schedule charging times at cheaper off-peak hours.⁴



Automatic Emergency Assistance

Bluelink Connected Care offers 24/7 SOS Emergency Assistance as well as Automatic Collision Notification that calls for help if you're in an accident where airbags deploy.⁵



Destination Send-to-Car

Use your smartphone to find restaurants or points of interest, then send the destination to your Ioniq's available navigation system for driving directions before you slip behind the wheel.⁶



Driver Profile Management

Save your navigation searches, radio presets and seating/mirror preferences to your Bluelink account, and they can be remotely updated and pushed to your Ioniq.



Remote Vehicle Status

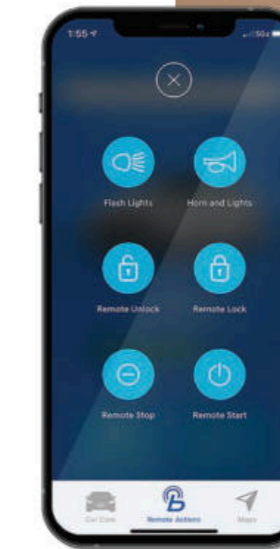
Wondering how much fuel is in your tank? If your vehicle's sunroof is open or the doors are unlocked? Your MyHyundai app knows the answers to these questions and more.



Apple CarPlay[®]



Wireless device charging



Amazon Echo integration



¹Not available with Ioniq Hybrid Blue. 2022 Ioniq vehicles include three years of Bluelink Connected Care, Remote and Guidance (factory-equipped navigation required) packages. All trials require an active Bluelink subscription agreement subject to the Connected Services Terms and Conditions. Three-year term starts from the new vehicle date-of-first-use, is available for new vehicle purchases and leases, and is transferable to subsequent owners subject to the Terms and Conditions. Only use Bluelink and corresponding devices when safe to do so. Cellular and GPS coverage is required. Features, specifications and fees are subject to change. For further details and limitations, visit HyundaiUSA.com or your authorized Hyundai dealer. ² Amazon, Alexa and all related logos and motion marks are trademarks of Amazon.com, Inc. or its affiliates. Google Assistant and Google Home are trademarks of Google LLC. ³ Requires active Bluelink subscription with Remote package. Not available on all models. Requires vehicles equipped with push button start. Remote climate control available on properly equipped models with fully automatic temperature control. Remote stop only available when in remote start mode. ⁴ Requires Bluelink Remote package. For remote charging, vehicle needs to be plugged into a 120V or 240V electrical socket. See Owner's Manual for details and limitations. ⁵ Bluelink agents will contact existing emergency service responders. ⁶ Requires navigation-equipped vehicle and an active Bluelink subscription with Guidance package.

IONIQ Hybrid Blue

1.6L GDI Atkinson Cycle
4-Cylinder Hybrid Engine

net hp 139
net lb-ft 125



Popular Features

- Wireless Apple CarPlay® and Android Auto™
- Dual automatic temperature control
- Forward Collision-Avoidance Assist with Pedestrian Detection
- Lane Keeping Assist and Driver Attention Warning
- 8" high-resolution touchscreen Display Audio
- 60/40 split fold-down rear seatback

IONIQ Hybrid SEL

1.6L GDI Atkinson Cycle
4-Cylinder Hybrid Engine

net hp 139
net lb-ft 125



Popular Features

- Forward Collision-Avoidance Assist with Pedestrian and Cyclist Detection
- Lane Following Assist
- Smart Cruise Control with Stop & Go
- LED headlights and taillights
- Power tilt-and-slide sunroof
- Wireless device charging

Wheels

Blue 15" Alloy Wheel



SE 15" Alloy Wheel



SEL / Limited 17" Alloy Wheel



Plug-in Hybrid 16" Alloy Wheel



IONIQ Hybrid SE

1.6L GDI Atkinson Cycle
4-Cylinder Hybrid Engine

net hp 139
net lb-ft 125



Popular Features

- Blind-Spot Collision Warning
- Rear Cross-Traffic Collision Warning
- Regenerative brake-level control paddles
- Bluelink® Connected Car Services (3 years complimentary)
- Heated front seats
- Heated side mirrors with LED turn signal indicators

IONIQ Hybrid Limited

1.6L GDI Atkinson Cycle
4-Cylinder Hybrid Engine

net hp 139
net lb-ft 125



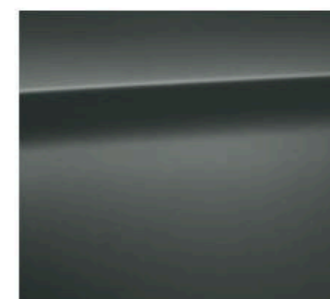
Popular Features

- Highway Driving Assist
- 10.25" high-resolution touchscreen navigation system
- Leather seating surfaces
- Integrated Memory System for driver seat
- Parking Distance Warning – Forward & Reverse
- Harman Kardon® premium audio system with 8 speakers

Exterior Colors



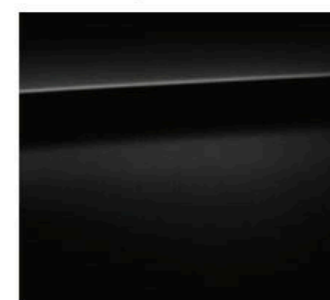
Ceramic White



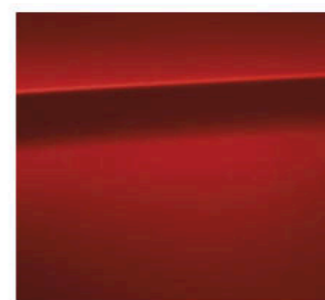
Stellar Silver



Amazon Gray



Intense Blue



Black Noir Pearl

Scarlet Red Pearl – Hybrid only

IONIQ Plug-in Hybrid SE

1.6L GDI Atkinson Cycle
4-Cylinder Hybrid Engine

net hp 139
range 620 miles¹



Popular Features

- Forward Collision-Avoidance Assist with Pedestrian and Cyclist Detection
- Lane Following Assist
- Heated front seats
- Bluelink® Connected Car System (3 years complimentary)
- Smart Cruise Control with Stop & Go
- LED Daytime Running Lights and LED taillights

IONIQ Plug-in Hybrid Limited

1.6L GDI Atkinson Cycle
4-Cylinder Hybrid Engine

net hp 139
range 620 miles¹



Popular Features

- Highway Driving Assist
- 10.25" high-resolution touchscreen navigation system
- Harman Kardon® premium audio system with 8 speakers
- Leather seating surfaces and Integrated Memory System for driver seat
- Power tilt-and-slide sunroof
- Parking Distance Warning – Forward & Reverse

Exterior Dimensions	IONIQ
Wheelbase	106.3 in
Overall Length	176.0 in
Overall Width	71.7 in
Overall Height	56.9 in

IONIQ Plug-in Hybrid SEL

1.6L GDI Atkinson Cycle
4-Cylinder Hybrid Engine

net hp 139
range 620 miles¹



Popular Features

- Blind-Spot Collision Warning
- Rear Cross-Traffic Collision Warning
- LED headlights
- Power driver seat with adjustable lumbar support
- Wireless device charging
- Auto-dimming rearview mirror with HomeLink®

IONIQ Hybrid
EPA Estimates (City/Highway/Combined)²

58/60/59 MPG | Blue 6-Speed DCT

54/57/55 MPG | SE / SEL / Limited 6-Speed DCT

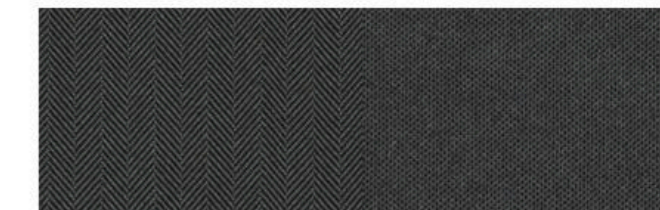
IONIQ Plug-in Hybrid
EPA Combined Estimates²

52 MPG / 119 MPGe | SE / SEL / Limited 6-Speed DCT

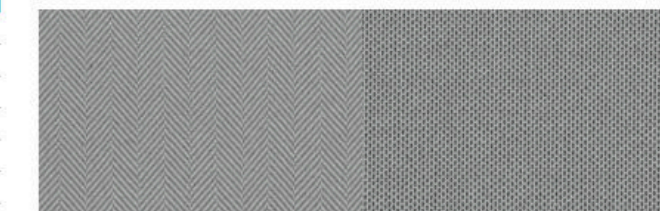
¹Estimated gas + battery driving range based on combined city/highway MPG. ²EPA estimates for comparison only. Mileage may vary. Your actual mileage will vary with options, driving conditions, driving habits and the vehicle's condition. MPGe is the EPA-equivalent measure of gasoline fuel efficiency for electric mode operation. Use for comparison purposes only. Mileage may vary depending on driving conditions, driving habits, the vehicle's condition, the age/condition of the lithium-ion polymer battery, and other factors.

Interior Dimensions	IONIQ
Headroom – front (with sunroof) / rear	39.1 (38.2) / 37.4 in
Legroom – front / rear	42.2 / 35.7 in
Shoulder Room – front / rear	56.1 / 55.0 in
Passenger Volume	96.2 cu ft

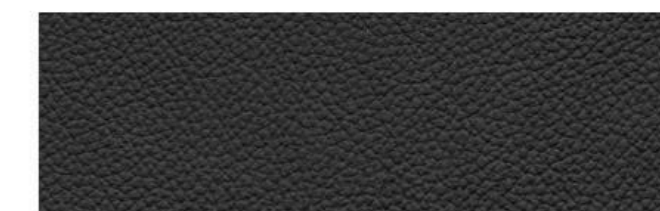
Interior Colors



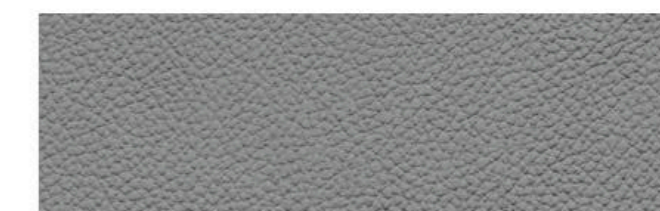
Blue / SE / SEL Charcoal Black Cloth



Blue / SE / SEL Gray Cloth



Limited Charcoal Black Leather



Limited Gray Leather

Interior Dimensions	IONIQ
Cargo Capacity – Hybrid	26.5 cu ft
Cargo Capacity – Plug-in Hybrid	23.0 cu ft
Total Interior Volume – Hybrid	122.7 cu ft
Total Interior Volume – Plug-in Hybrid	119.2 cu ft

IONIQ Hybrid / IONIQ Plug-in Hybrid

Power & Handling	Blue	SE	SEL	Ltd	SE	SEL	Ltd
139 net hp, 1.6L GDI Atkinson Cycle 4-cylinder hybrid engine with 32 kW permanent magnet high-power density motor	●	●	●	●	–	–	–
139 net hp, 1.6L GDI Atkinson Cycle 4-cylinder hybrid engine with 45 kW permanent magnet high-power density motor	–	–	–	–	●	●	●
6-speed EcoShift® Dual Clutch Transmission with Sport Mode	●	●	●	●	●	●	●
Electronic Parking Brake	●	●	●	●	●	●	●
Drive Mode Select	●	●	●	●	●	●	●
Regenerative brake-level control paddles	–	●	●	●	●	●	●
Exterior Features	Blue	SE	SEL	Ltd	SE	SEL	Ltd
Active grille shutters	●	●	●	●	●	●	●
Automatic on/off headlights	●	●	●	●	●	●	●
LED Daytime Running Lights	–	●	●	●	●	●	●
LED headlights	–	–	●	●	–	●	●
LED taillights	–	–	●	●	●	●	●
Integrated rear spoiler with center LED brake light	●	●	●	●	●	●	●
Chrome side window-line trim	–	●	●	●	–	●	●
Door handle approach lights	●	●	●	●	●	●	●
Chrome door handles	–	–	–	●	–	–	●
Heated side mirrors	–	●	●	●	●	●	●
Side mirrors with LED turn signal indicators	–	●	●	●	–	●	●
Power-folding side mirrors with approach lights	–	–	–	●	–	–	●
Power tilt-and-slide sunroof	–	–	●	●	–	–	●
Rearview camera with dynamic parking guidelines	●	●	●	●	●	●	●
Aero wiper blades	–	●	●	●	●	●	●
Interior Features	Blue	SE	SEL	Ltd	SE	SEL	Ltd
Proximity Key entry with push button start	●	●	●	●	●	●	●
7" color LCD instrument cluster display	●	●	●	●	●	●	●
Tilt-and-telescopic steering wheel with cruise controls	●	●	●	●	●	●	●
Dual automatic temperature control	●	●	●	●	●	●	●
Power driver seat with adjustable lumbar support	–	●	●	●	–	●	●
Integrated Memory System for driver seat	–	–	–	●	–	–	●
Leather-wrapped steering wheel	–	●	●	●	●	●	●
Premium cloth seating surfaces	●	●	●	–	●	●	–
Leather seating surfaces	–	–	–	●	–	–	●

Interior Features	Blue	SE	SEL	Ltd	SE	SEL	Ltd
Heated front seats	–	●	●	●	●	●	●
Floor console-mounted rear vents	–	–	–	●	–	–	●
Ambient interior lighting and premium door sill plates	–	–	–	●	–	–	●
Chrome interior door handles	–	–	●	●	–	●	●
LED interior lighting	–	–	●	●	–	–	●
60/40 split-folding rear seats	●	●	●	●	●	●	●
Rear center armrest with dual cupholders	–	●	●	●	●	●	●
Power windows with driver auto-down/up	●	●	●	●	●	●	●
Auto-down/up front passenger window	–	–	●	●	–	●	●
Smart Cruise Control with Stop & Go	–	–	●	●	●	●	●
Auto-dimming rearview mirror with HomeLink®	–	–	●	●	–	–	●
Advanced Safety	Blue	SE	SEL	Ltd	SE	SEL	Ltd
Forward Collision-Avoidance Assist with Pedestrian Detection	●	●	–	–	–	–	–
Forward Collision-Avoidance Assist with Pedestrian and Cyclist Detection	–	–	●	●	●	●	●
Lane Keeping Assist	●	●	●	●	●	●	●
Lane Following Assist	–	–	●	●	●	●	●
Driver Attention Warning	●	●	●	●	●	●	●
Blind-Spot Collision Warning	–	●	●	●	–	●	●
Rear Cross-Traffic Collision Warning	–	●	●	●	–	●	●
High Beam Assist	●	●	●	●	●	●	●
Highway Driving Assist	–	–	–	●	–	–	●
Parking Distance Warning – Forward & Reverse	–	–	–	●	–	–	●
Audio & Connected Car Technology	Blue	SE	SEL	Ltd	SE	SEL	Ltd
8" color touchscreen AM/FM/MP3 Display Audio	●	●	●	–	●	●	–
10.25" color touchscreen navigation system	–	–	–	●	–	–	●
Harman Kardon® premium audio system with 8 speakers and Clari-Fi™ Music Restoration Technology	–	–	–	●	–	–	●
Apple CarPlay® and Android Auto™ (wireless wired)	● –	● –	● –	– ●	● –	● –	– ●
SiriusXM Satellite Radio	–	●	●	●	●	●	●
Bluelink® Connected Care & Remote packages	–	●	●	●	●	●	●
Bluelink® Guidance package	–	–	–	●	–	–	●
Bluetooth® hands-free phone system and HD Radio™	●	●	●	●	●	●	●
Wireless device charging	–	–	●	●	–	●	●
Dual USB ports (1 charging/1 charging + data)	–	●	●	●	●	●	●

● Standard – Not Available Ltd=Limited Trim



IONIQ Hybrid Limited in Scarlet Red Pearl



Hyundai Hope On Wheels®

Helping Kids Fight Cancer Since 1998



Hope makes every Hyundai better.

Each time we sell a Hyundai, a portion goes to Hyundai Hope On Wheels® to help find a cure for childhood cancer. Over the last 23 years, Hyundai Hope On Wheels has donated more than \$185 million. Hope is our greatest feature. And it comes standard on every Hyundai. For more information, please visit HyundaiHopeOnWheels.org.



America's Best Warranty

POWERTRAIN LIMITED WARRANTY

10 YEARS
100,000 MILES

NEW VEHICLE LIMITED WARRANTY

5 YEARS
60,000 MILES

ANTI-PERFORATION WARRANTY

7 YEARS
UNLIMITED MILES

24/7 ROADSIDE ASSISTANCE

5 YEARS
UNLIMITED MILES

HYBRID/ELECTRIC SYSTEM COMPONENTS

10 YEARS
100,000 MILES



Hyundai Complimentary Maintenance

Complimentary maintenance includes Hyundai-approved oil and oil filter change (except for electric vehicles and fuel cell electric vehicles) plus tire rotation at normal factory-scheduled maintenance intervals for 3 years or 36,000 miles, whichever comes first. More frequent maintenance due to severe driving or conditions is excluded. Offer valid only for new 2020-2022 Hyundai models purchased or leased on or after February 1, 2020. See your Hyundai dealer for further details and limitations.



Owner Assurance

Our commitment to Hyundai owners does not end with the transfer of keys. Wherever the road takes you, we've got your back with Owner Assurance, an umbrella of services and benefits that includes America's Best Warranty, 24/7 Roadside Assistance, innovative safety and car care features...and more.

America's Best Warranty covers specific hybrid/electric vehicle-related components including high-voltage battery, battery management system and traction motor. See Owner's Handbook & Warranty Information Booklet for details. See dealer for LIMITED WARRANTY details. Fuel economy estimated by EPA for comparison only. Mileage may vary. While the information contained in this brochure was correct at the time of printing, specifications and equipment can change. Feature comparisons based on competitor information available at the time of printing. No warranty or guarantee is being extended in this brochure, and Hyundai reserves the right to change product specifications and equipment at any time without incurring obligations. Some vehicles are shown with optional equipment. Specifications apply to U.S. vehicles only. Please contact your Hyundai dealer for current vehicle specifications. As part of Hyundai's commitment to a responsible environment, this brochure was printed using paper certified by the Forest Stewardship Council®. FSC® certification helps ensure that the highest social and environmental standards are met in the making of the paper we use, contributing to conservation, responsible management and community-level benefits for people near the forests.



©2021 HYUNDAI NP020A2022