

2023

KONA





Live big adventures. Leave a small footprint.

Three years ago, the Hyundai Kona and Kona Electric SUVs shared the honor of being named 2019 North American Utility Vehicle of the Year. What impressed the North American Car, Utility and Truck of the Year automotive media jury is how we had given large-SUV swagger to a compact SUV that is as versatile and stylish as it is fun to drive.

Since then, Kona has only improved. Our designers added eye-catching colors, stylish wheels and lighting elements that accent its bold front end.

What kind of power you'll command is up to you – Kona offers a choice of fuel-efficient 2.0L or turbocharged 1.6L engines. Kona Electric, our first all-electric SUV, features an EPA-estimated driving range of up to 258 miles on a full charge.¹ So there can be plenty of venturing in every adventure. Hyundai's racing DNA can be seen in Kona N Line's performance-minded

styling, which is accompanied by upgraded power and handling agility. For pulse-pounding acceleration and razor-sharp driving dynamics, there's Kona N – the first SUV launched by our N Performance brand.

Whichever model you choose, Kona is nimble in urban traffic and tight parking spaces. And with the availability of All Wheel Drive, you'll have the help of added traction to keep you moving confidently. This will also inspire confidence behind the wheel: Advanced safety technologies like Blind-Spot Collision-Avoidance Assist and Rear Cross-Traffic Collision-Avoidance Assist are standard on every Kona model.

No wonder more people who buy a Hyundai buy another – more than any other car, at any price. In fact, for the 13th year in a row, Hyundai has ranked #1 In Customer Loyalty.² Now that's some footprint.

¹ Kona Electric driving range based on a fully charged battery and 120 combined MPGe. MPGe is the EPA-equivalent measure of gasoline fuel efficiency for electric mode operation. All figures are EPA estimates for comparison purposes only. Actual range and mileage will vary with options, driving conditions and habits, vehicle and battery condition, and other factors. ² Based on Brand Keys 2010, 2011, 2012, 2013, 2014, 2015, 2016, 2017, 2018, 2019, 2020, 2021 and 2022 Customer Loyalty Engagement Index*.



Best Subcompact SUV For The Money
2022 Hyundai KONA

¹Smart Cruise Control (SCC) is not a collision-avoidance or warning device. SCC is for highway use only and should not be used in poor weather, heavy or varying traffic, or on winding or slippery roads. The driver remains responsible to slow or stop the vehicle to avoid a collision. SCC initiates a full stop when the traffic ahead stops and re-engages if the vehicle ahead moves forward within 3 seconds. See Owner's Manual for details and limitations. ²Do not rely exclusively on the Rear View Monitor. Rear View Monitor is a supplemental system, and the driver must still be attentive and exercise caution when driving with it. See Owner's Manual for details and limitations. ³View U.S. News Best Cars at cars.usnews.com.

KONA N Line in Pulse Red



KONA Limited LED Taillights



10.25" digital instrument cluster



KONA Limited 18" wheels

Fuel your desires.

With Kona, fuel-efficient performance is offered two ways. For starters, there's the smooth and quiet power of a 2.0L Atkinson Cycle Smartstream engine and Intelligent Variable Transmission that powers Kona SE and Kona SEL.

Kona Limited features a turbocharged 1.6L Smartstream engine and 7-speed EcoShift® Dual Clutch Transmission (DCT) that wield 195 horsepower. KONA N Line uses that same fun-to-rev turbo engine and 7-speed DCT to serve up its spin on adventure – with the added flair of motorsport-inspired styling cues inside and out.

Drive any Kona, and you'll feel a sense of command and control that starts with its high seating position and tight turning radius. On Kona All Wheel Drive models, a multi-link rear suspension helps achieve precise steering response and

nimble handling. Kona also features multiple drive modes, which let you customize the steering feel, transmission and overall powertrain responsiveness at the push of a button.

Another button activates Kona's available Smart Cruise Control with Stop & Go, which adjusts your speed automatically when slower traffic is sensed. It can even bring you to a complete stop – and re-engage without driver input.¹ Downhill Brake Control brings stability to the tricky task of easing your Kona down a steep incline.

Every Kona model also features a Rear View Monitor with Parking Guidance that makes parallel parking seem effortless.² Features like these are among the many reasons why Kona was named 2022 Best Subcompact SUV for the Money by *U.S. News & World Report*.³



KONA N Line in Black Sport Cloth & Red Stitching

Drive electric. Without getting sticker shock.

Some car companies make Electric Vehicles that are luxury cars – and priced accordingly. At Hyundai, we wanted to make our first all-electric SUV a vehicle that everyone could consider owning. With Kona Electric, it's now possible to plug and play – even if you don't have a fortune to play with.

With its battery-powered motor, Kona Electric turns torque into instant acceleration – with zero tailpipe emissions and a driving range of up to 258 miles on a single charge.¹ Plug a 100 kW Level 3 charger into the easy-to-access charging port in Kona Electric's front bumper, and you can power up from 10% to an 80% charge in around 47 minutes.²

Using the MyHyundai with Bluelink[®] app on your compatible smartphone, you can check the battery's charge before you go and schedule charging remotely to take advantage of lower utility rates during off-peak hours.³ Kona Electric even does some recharging while you drive. See those paddles on the steering wheel? They are regenerative braking paddles that let you choose between four levels of energy capture.

Say you want to camp at a remote site, but bring some of the comforts of home along. Activate Utility Mode from the instrument cluster menu, and you can continue to power your Kona Electric's climate or audio systems while you are parked at the campsite.



KONA Electric Limited in Black Leather



Steering wheel regenerative braking paddles



Front-mounted charge port



Shift-by-Wire push-button drive controls



¹Kona Electric driving range based on a fully charged battery and 120 combined MPGe. MPGe is the EPA-equivalent measure of gasoline fuel efficiency for electric mode operation. All figures are EPA estimates for comparison purposes only. Actual range and mileage will vary with options, driving conditions and habits, vehicle and battery condition, and other factors. ²Approximately 47 minutes on a 100 kW DC Fast Charger and approximately 64 minutes on 50 kW DC Fast Charger. Charging rate and time estimate varies based on a number of factors including current battery charge level, output of the charging unit, vehicle and battery settings and outside temperature. ³Requires active Bluelink subscription with Remote package. For remote charging, vehicle needs to be plugged into an electrical socket. See Owner's Manual for details and limitations.

KONA Electric Limited in Blue Wave



KONA N in Sonic Blue

Turbocharge your adventures.

Kona N was created by Hyundai's elite engineers for drivers who crave race-inspired levels of performance. Settle into its sport seats with side bolsters, grip the leather-wrapped N steering wheel and grab the leather-clad shift knob. Now get ready for N Grin Shift, a driver-activated overboost that increases the output of Kona N's turbocharged 2.0L engine by up to 10 hp for 20 seconds.¹ Launch Control manages acceleration from a standing start,² while an N Corner Carving Differential precisely feeds power to the pavement for optimal cornering.

An 8-speed Wet Dual Clutch Transmission with rev matching ensures that each downshift is executed for maximum effect – and accompanied by growling, snaps and pops when the variable exhaust system is activated through customizable drive modes.

Quick-ratio rack-mounted power steering and an N-tuned 4-wheel electronically controlled suspension give Kona N razor-sharp handling. Press the brake pedal, and huge 14.2" front rotors take hold, bringing you to a swift and sure stop.

Want to be your own elite engineer? Toggling the blue N buttons on the steering wheel let you select your desired drive mode. N Custom mode lets you recalibrate suspension and powertrain settings. Or press the dedicated N Mode button to max out everything. The buttons can also start a lap timer. Take your Kona N to a track near you, and you'll feel like an N Division development driver, lapping the Nürburgring in pursuit of the highest possible levels of performance.



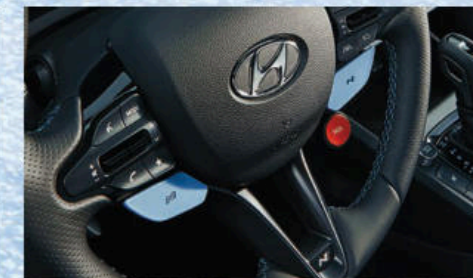
KONA N in Black Leather & Suede Combination



KONA N with rear wing spoiler, LED taillights and large-bore dual exhaust outlets



Customizable digital instrument cluster



Drive Mode and N Grin Shift buttons

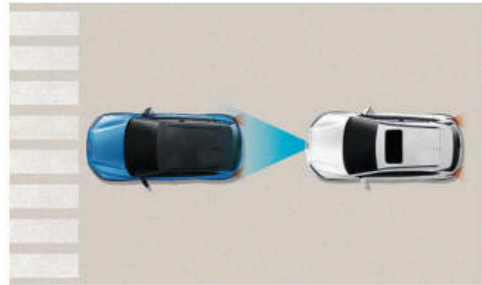
¹A maximum of 10 hp overboost operates at 5,500 rpm and above for 20 seconds, after which there is a 40-second interval before overboost can be activated again. Overboost deactivates when time expires or when the driver lifts off of the throttle.
²Only use Launch Control feature on a closed race track. Never use Launch Control on public roads. See Owner's Manual for details and limitations.

Enhance your sense of security. With Hyundai SmartSense.

Potential collisions are all around. That's why your Kona comes with Hyundai SmartSense, a robust suite of safety and driver-assist technologies that offer confidence at every turn.¹ It's a fusion of cameras, sensors and radar technologies that provide a nearly 360-degree lookout for potential hazards. Every 2023 model comes standard with innovations like Forward Collision-Avoidance Assist,² Lane Following Assist³ and Driver Attention Warning.⁴

Kona's unibody is infused with advanced high-strength steel and engineered to both absorb and disperse collision energy in a way that helps optimize the integrity of the passenger cabin. It's a strong, rigid platform that allows Kona's available multi-link rear suspension to balance precise handling with a smooth, quiet ride. So you can drive your Kona with a profound peace-of-mind.

Hyundai SmartSense Technologies



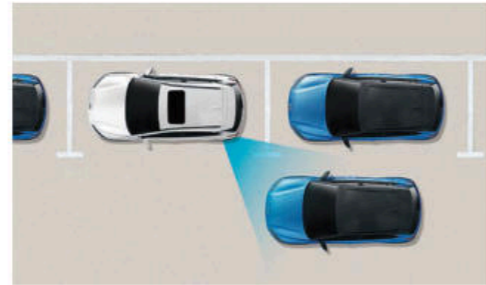
Forward Collision-Avoidance Assist

When the front-facing camera detects a vehicle or pedestrian in your path, your Kona warns you of a potential collision. If it determines you have not started braking in time to stop safely, the system automatically applies emergency braking.²



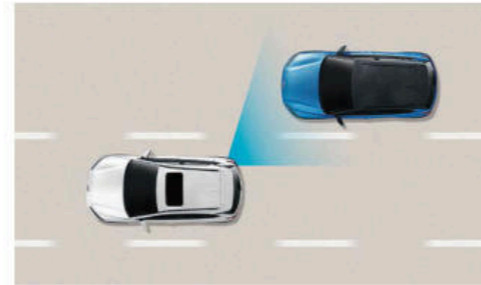
Rear Cross-Traffic Collision-Avoidance Assist

Backing out of a parking space and wondering whether there is cross traffic coming your way? This feature helps warn you of another vehicle that is detected to be approaching from the side. If necessary, your Kona applies automatic braking to help prevent a collision.⁵



Safe Exit Warning | Rear Occupant Alert

After parking, Safe Exit Warning issues an alert when a vehicle is detected to be approaching from behind, letting the driver know it may not be safe for passengers to open the street-side door.⁶ A Rear Occupant Alert feature helps ensure your family's safety even after you've exited your Kona.⁷



Blind-Spot Collision-Avoidance Assist

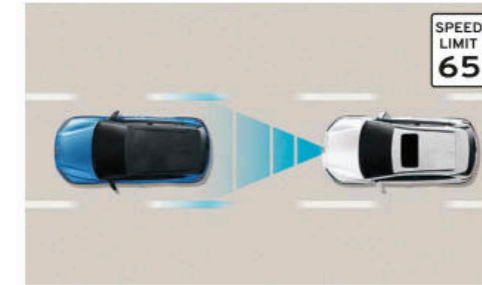
If your Kona detects a vehicle in your blind spot while the turn signal is on, this feature alerts the driver and automatically applies light braking before you change lanes to help avoid a collision. It can also detect vehicles up to two lanes over to help prevent collisions when exiting a parallel parking spot.⁸



Rear Occupant Alert

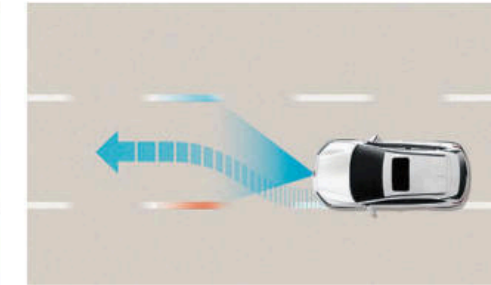


Rear View Monitor with Parking Guidance



Highway Driving Assist

Acting as your copilot on highways, this available feature helps keep you centered in your lane while maintaining a set speed and distance from the vehicle in front. It uses Kona's navigation map data to automatically adjust for changing speed limits, and reduces your speed when it detects you're approaching a curve in the road.⁹



Lane Following Assist

Using the front-facing camera to detect lane markers on the road, this feature assists the Kona driver's steering to help keep your vehicle centered in its lane. Your Hyundai Kona can even determine a virtual path based on movements of the preceding vehicle.³



¹ Standard and available safety features vary by trim level. ² Forward Collision-Avoidance Assist with Pedestrian Detection is intended to be a supplement to safe driving practices. The system is not designed to detect certain stationary objects such as trees or poles, and may not detect all vehicles or pedestrians under certain conditions. The system is a driver assistance system and is not a substitute for safe driving. The driver is responsible for being attentive and maintaining control of the vehicle, and should not wait for the system's alerts before braking as there may not be sufficient time to brake safely. See Owner's Manual for details and limitations. ³ Lane Following Assist (LFA), when actively engaged with Smart Cruise Control or Highway Driving Assist, helps keep your vehicle centered in its lane when the lane markings are clearly visible on the road. Lane Following Assist will not work under all circumstances and will not prevent loss of control. Lane Following Assist is a supplemental assist and does not replace the need for extreme care and attention by the driver. See Owner's Manual for details and limitations. ⁴ It is the driver's responsibility to remain alert at all times. Driver Attention Warning is only a warning to inform the driver of a potential lack of attention or drowsiness. It does not detect and provide an alert in every situation. See Owner's Manual for details and limitations. ⁵ Rear Cross-Traffic Collision-Avoidance Assist (RCCA) is designed to notify drivers of approaching cross traffic behind their vehicle. When another vehicle is detected while you are backing out of a parking spot, it provides audible and visual display warnings and applies braking if it senses a collision is imminent. RCCA is active when the vehicle is in reverse gear and backing at a speed less than 6 mph. It only engages during the first activation of reverse gear from park and may not detect all vehicles, depending on the size, angle, distance and speed of the other vehicle. Never rely exclusively on RCCA. Always look over your shoulder and use your mirrors to confirm rear clearance. There are limitations to the function, detection, range and clarity of the system. See Owner's Manual for further details and limitations. ⁶ When your vehicle is

parked, Safe Exit Warning (SEW) alerts the driver to a detected vehicle approaching from behind. SEW is not a substitute for driver or passenger attentiveness. Always be aware of your surroundings and attentive of approaching vehicles. See Owner's Manual for details and limitations. ⁷ When your vehicle is parked and the engine has been turned off, Rear Occupant Alert (ROA) can help alert the driver to occupants in the rear seats. ROA is not a substitute for driver attentiveness. Never leave a child or pet unattended in a vehicle. See Owner's Manual for details and limitations. ⁸ Blind-Spot Collision-Avoidance Assist (BCA) helps warn you of other cars in the blind-spot region and may apply braking to help prevent an unsafe lane change. It also helps prevent collisions when exiting parallel parking spots by alerting the driver to a potential hazard. Never rely exclusively on BCA, as it is not a substitute for attentive driving. Always look over your shoulder and use your mirrors to confirm clearance. There are limitations to the function, detection, range and clarity of the system. BCA may not function correctly if one or more of the sensors is damaged, dirty or covered, or if weather conditions (heavy rain, snow or fog) are interfering with sensor operation. See Owner's Manual for details and limitations. ⁹ Highway Driving Assist (HDA) is available for highway use only and can help maintain a specific distance from the vehicle ahead while keeping your vehicle centered in its lane when lane markings are clearly visible on the road. HDA should not be used in poor weather, heavy or varying traffic, or on winding or slippery roads. HDA will not work under all circumstances and will not prevent loss of control. Driver remains responsible to slow or stop the vehicle to avoid a collision. See Owner's Manual for details and limitations. ¹⁰ Government 5-Star Safety ratings are part of the National Highway Traffic Safety Administration's (NHTSA) New Car Assessment Program (nhtsa.gov). Kona Electric and Kona N not rated by NHTSA.



Make your personal space more personal.

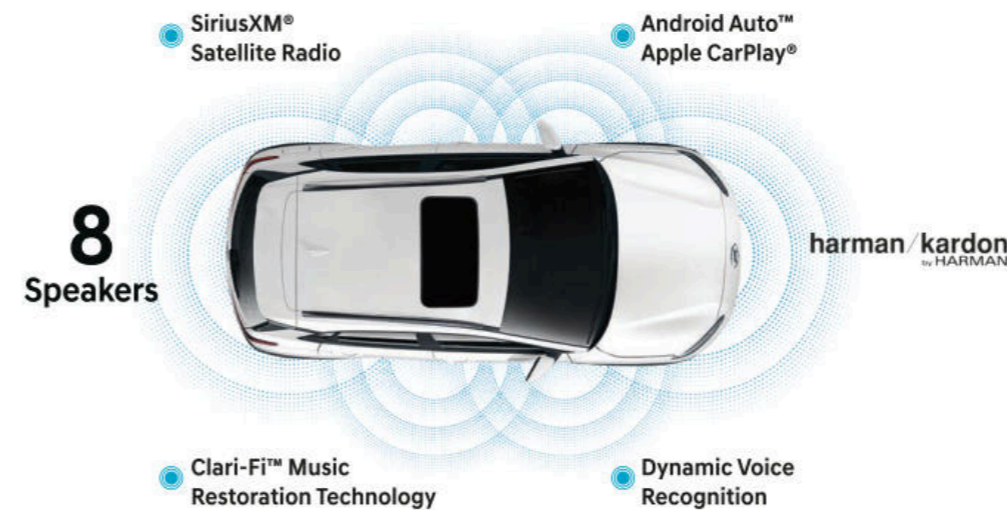
Kona gets you. It shares your modern, minimalist sense of style with an interior that looks and feels like it was designed just for you. Even before you slide into the driver's seat, you're in total control. Using the MyHyundai with Bluelink® app on your compatible smartphone, you can remotely start your Kona's climate controls for a cabin temperature that feels just right the moment you enter.¹ Using the available Hyundai Digital Key to unlock the doors is as easy as touching your compatible phone to the front door handle.²

Step inside, take your seat – and enjoy the view. The available 8-way power driver seat with power lumbar adjustment ensures precisely fit comfort. A big 8" touchscreen display broadens your ability to control things from one central vantage point, while an available 10.25" navigation touchscreen expands that ability with a split-screen display and junction view lane guidance. The navigation system is enhanced with Dynamic Voice Recognition, which makes it easy to tune into your favorite SiriusXM® channels on the available Harman Kardon® premium audio system.³

Slide open the available power sunroof and bathe your Kona's interior with light. A dashboard with the availability of a digital instrument cluster and ambient lighting accents set an unmistakable tone: Kona is where fun and functionality come together. Need a flexible space plan for passengers and cargo? The 60/40 split fold-flat rear seatbacks create lots of options, while a dual-level cargo floor helps keep everything neatly organized.



60/40 split fold-flat rear seatbacks



10.25" navigation system with split screen



Dynamic Voice Recognition



Automatic temperature controls



Power tilt-and-slide sunroof

¹Requires active Bluelink subscription with Remote package.²The available Hyundai Near Field Communication Digital Key requires a compatible Android smartphone and appropriately equipped 2023 Hyundai Kona. Not all Android devices are compatible. Kona vehicle must be equipped with a smart key with push button start, wireless device charging and Audio Video Navigation System 5.0 (or newer) or Display Audio 2.0. Lock and unlock functionality work on the front doors only. See your Owner's Manual for details and limitations. ³Dynamic Voice Recognition varies by unit. Speak in a normal voice and minimize background noise for best results. See Owner's Manual for details and limitations. All SiriusXM services require a subscription sold separately, or as a package, by Sirius XM Radio Inc. after a 3-month trial period. The subscription plan you choose will automatically renew, and you will be charged according to your chosen payment method at then-current rates. Fees and taxes apply. To cancel, you must call SiriusXM at 1-866-635-2349. See SiriusXM Customer Agreement for complete terms at siriusxm.com. All fees and programming subject to change. Sirius, XM, SiriusXM and all related marks and logos are trademarks of Sirius XM Radio Inc.



It's as digital as your life.

To keep you plugged into your digital life on the go, Kona is available with Hyundai BlueLink[®], complimentary for your first three years.¹ BlueLink's array of connected car services offer security on the road – and convenience on the go.

Using the MyHyundai with BlueLink[®] app on your smartphone or smartwatch – or your Amazon Echo[®] or Google Home[™] device – you can remotely unlock your Kona's doors, start the engine and activate climate controls while you're getting ready to leave.² You can also use the smartphone app to find your vehicle in crowded airport or stadium parking lots.³

With the BlueLink Guidance package, you can tap POI Search on your smartphone to find a new restaurant or popular shopping spot, then send your chosen points of interest to Kona's available navigation system for driving directions.⁴ Of course, BlueLink is just one of the ways Hyundai helps to make your digital life seamless.

Wired or wireless, Apple CarPlay[®] and Android Auto[™] sync your smartphone with Kona's large touchscreen display for easy access to contact lists, texts, calls, maps and navigation, your music library and more – ensuring the smarts of your smartphone travel with you wherever you go.⁵ Wireless device charging is also available⁶ – like Kona's standard rear and dual front USB charging ports, you'll wonder how you ever got along without it.



Hyundai Digital Key



Apple CarPlay



Wireless device charging

BlueLink



Automatic Emergency Assistance

BlueLink Connected Care offers 24/7 SOS Emergency Assistance as well as Automatic Collision Notification that calls for help if you're in an accident where your vehicle's airbags deploy.⁷



On-Demand Diagnostics

Run vehicle diagnostics from your MyHyundai mobile app, report issues at the press of a button and receive maintenance reminders or Monthly Vehicle Health Reports by email.



Driver Profile Management

Save your navigation searches, radio presets and driver seat/side mirror settings⁸ to your secure BlueLink account, and you can remotely update and push them to your Kona.³



Remote Vehicle Controls

Use your smartphone, home assistant or wearable device to remotely start your Kona's engine, set your vehicle's cabin temperature, unlock the doors and more.



Vehicle Charging Dashboard

You can also use your MyHyundai app to find charging stations, control Kona Electric's charging remotely and schedule charging times during cheaper off-peak hours of the day.⁹



Remote Vehicle Status

Wondering how much fuel is in your tank? If your vehicle's liftgate is open or the doors are unlocked? Your MyHyundai app knows the answers to these questions and more.³

¹ The 2023 Hyundai Kona and Kona Electric include 3 years of the BlueLink Connected Care, Remote and Guidance (factory-equipped navigation required) packages. All trials require an active BlueLink subscription agreement subject to the Connected Services Terms and Conditions. Three-year term starts from the new vehicle date-of-first-use, is available for new vehicle purchases and leases, and is transferable to subsequent owners subject to the Terms and Conditions. Only use BlueLink and corresponding devices when safe to do so. Cellular and GPS coverage is required. Features, specifications and fees are subject to change. For more on details and limitations, visit HyundaiUSA.com or your authorized Hyundai dealer. ² Requires active BlueLink subscription with Remote package. Amazon, Alexa and all related logos and motion marks are trademarks of Amazon.com, Inc. or its affiliates. Google Assistant and Google Home are trademarks of Google LLC. ³ Requires active BlueLink subscription with Remote package. ⁴ Requires active BlueLink subscription with Guidance package. ⁵ Apple CarPlay[®] is a registered trademark of Apple Inc. Android Auto[™] is compatible with Android[™] phones running Android 5.0 or higher. Android Auto may not be available on all devices and is not available in all countries or regions. Additional apps may be required. Android and Android Auto are trademarks of Google LLC. ⁶ Qi wireless charging function is based on smartphone compatibility and/or specific accessory cases. ⁷ BlueLink agents will contact existing emergency service responders. ⁸ Requires vehicle equipped with driver seat Integrated Memory System. ⁹ Requires active BlueLink subscription with Remote package. For remote charging, vehicle needs to be plugged into an electrical socket. See Owner's Manual for details and limitations.

KONA SE

Smartstream 2.0L MPI 4-Cylinder Engine



hp lb-ft
147 132

Popular Features

- Blind-Spot Collision-Avoidance Assist
- Rear Cross-Traffic Collision-Avoidance Assist
- 8" color touchscreen display audio system
- Wireless Apple CarPlay® and Android Auto™
- Front (dual) and rear USB charge ports
- 16" alloy wheels

KONA Limited

Smartstream 1.6L Turbo GDI 4-Cylinder Engine



hp lb-ft
195 195

Popular Features

- Smart Cruise Control with Stop & Go
- Highway Driving Assist
- Leather-trimmed seating surfaces
- Parking Distance Warning – Reverse
- LED headlights and taillights | Ambient LED interior lighting
- 18" alloy wheels

Exterior Dimensions	KONA	N Line	N	ELECTRIC
Wheelbase	102.4 in	←	←	←
Overall Length	165.6 in	166.0 in	165.9 in	165.6 in
Overall Width	70.9 in	←	←	←
Overall Height	61.0 in	61.4 in	61.6 in	61.2 in
Overall Height with roof rails	61.6 in	62.0 in	62.2 in	–

KONA SEL

Smartstream 2.0L MPI 4-Cylinder Engine



hp lb-ft
147 132

Popular Features

- Contrasting roof color (models without sunroof)
- Proximity Key entry with push button start
- Power windows with front auto-down/up
- 8-way power driver seat with power lumbar support
- BlueLink® Connected Car System
- 17" alloy wheels

KONA SEL Convenience Package

- 10.25" touchscreen display with navigation
- Over-the-Air Map Updates
- Power tilt-and-slide sunroof
- Heated front seats
- Automatic temperature control
- Leather-wrapped steering wheel and shift knob
- Wireless device charging
- Hyundai Digital Key
- Hidden cargo-area storage compartment

Wheels



16" Alloy Wheel SE



17" Alloy Wheel SEL



18" Alloy Wheel N Line



18" Alloy Wheel Limited



19" Alloy Wheel N



17" Alloy Wheel Electric

KONA N Line

Smartstream 1.6L Turbo GDI 4-Cylinder Engine



hp lb-ft
195 195

Popular Features

- N Line unique front and rear fascia
- N Line grille and bodycolor cladding
- Power tilt-and-slide sunroof
- N Line sport cloth seating surfaces
- 10.25" digital instrument cluster display
- 18" alloy wheels

KONA N

2.0L Turbo GDI 4-Cylinder Engine



hp lb-ft
276 289

Popular Features

- N-specific body styling and rear underbody air diffuser
- N 8-speed Wet Dual Clutch Transmission
- N Grin Shift and N Power Shift
- N Grin Control System – Drive Mode Select
- Electronically Controlled Suspension
- 19" Pirelli P Zero™ 235/40R19 summer performance tires

Interior Dimensions	KONA	N Line	N	ELECTRIC
Headroom – front (with sunroof)/rear	39.6 (38.0) / 37.8 in	←	←	39.6 (38.0) / 37.7 in
Legroom – front/rear	41.5 / 35.2 in	←	←	41.5 / 33.4 in
Shoulder Room – front/rear	55.5 / 54.5 in	←	←	←
Passenger Volume	94.1 cu ft	←	←	92.4 cu ft
Cargo Capacity – rear seats up/down	19.2 / 45.8 cu ft	←	←	←
Total Interior Volume	113.3 cu ft	←	←	111.6 cu ft

KONA Electric SE

Permanent-Magnet Electric Motor



net hp net lb-ft
201 291

Popular Features

- Contrasting roof color (white/red/gray/blue/Cactus Fern only)
- 8-way power driver seat with power lumbar support
- Heated front seats | Front (dual) and rear USB charge ports
- BlueLink® Connected Car System
- 10.25" digital instrument cluster display
- 17" alloy wheels

KONA Electric SEL

Permanent-Magnet Electric Motor



net hp net lb-ft
201 291

Popular Features

- Power tilt-and-slide sunroof
- 10.25" high-resolution color touchscreen navigation
- Over-the-Air Map Updates
- Hyundai Digital Key
- Wireless device charging
- Battery warmer system

KONA Electric Limited

Permanent-Magnet Electric Motor

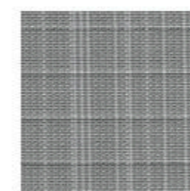


net hp net lb-ft
201 291

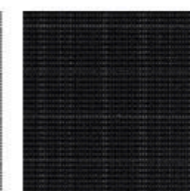
Popular Features

- Smart Cruise Control with Stop & Go
- Highway Driving Assist
- LED headlights and taillights
- Leather-trimmed seating surfaces
- Ventilated front seats and heated steering wheel
- Harman Kardon® 8-speaker premium audio system

Interior Colors



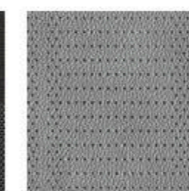
Gray Cloth SE/SEL



Black Cloth SE/SEL



Sport Cloth & Red Stitching N Line



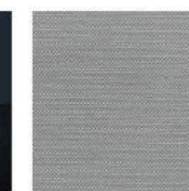
Gray Leather Limited



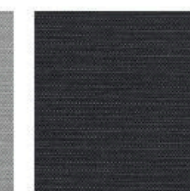
Black Leather Limited



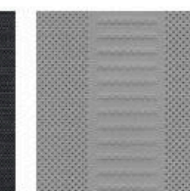
Black Leather & Suede Combination KONA N



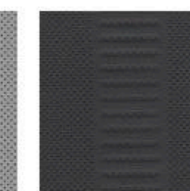
Gray Cloth Electric SE/SEL



Black Cloth Electric SE/SEL

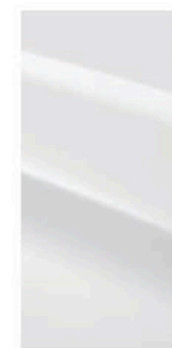


Gray Leather Electric Limited



Black Leather Electric Limited

Exterior Colors



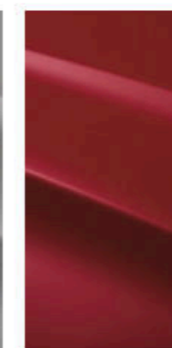
Lunar White**



Ultra Black/ Abyss Black



Cyber Silver* KONA Only



Pulse Red/ Ultimate Red***



Blue Wave***



Thunder Gray/ Ecotonic Gray KONA Only



Galactic Gray** Electric Only



Teal Isle KONA Only



Cactus Fern**



Sonic Blue KONA N Only



Racing Red KONA N Only

Available Contrasting Black Roof: *SEL without sunroof / **Electric SE without sunroof
KONA N Colors: Lunar White, Ultra Black, Sonic Blue and Racing Red

KONA / KONA Electric

Power & Handling	SE	SEL	N Line	Ltd	SE	SEL	Ltd
147 hp/132 lb-ft, 2.0L MPI Atkinson Cycle 4-cylinder engine	•	•	–	–	–	–	–
195 hp/195 lb-ft, 1.6L Turbo GDI 4-cylinder engine	–	–	•	•	–	–	–
150 kW (201 hp)/291 lb-ft permanent-magnet synchronous motor with 64 kWh lithium ion battery system	–	–	–	–	•	•	•
Smartstream Intelligent Variable Transmission (IVT)	•	•	–	–	–	–	–
7-speed EcoShift® Dual Clutch Transmission (DCT)	–	–	•	•	–	–	–
Shift-by-Wire drive controls / Regenerative brake control paddles	–	–	–	–	•	•	•
DC Fast Charging capability with SAE Combo port	–	–	–	–	•	•	•
Electronic Parking Brake with Automatic Vehicle Hold	–	–	–	•	•	•	•
4-wheel disc brakes	•	•	•	•	•	•	•
Downhill Brake Control and Idle Stop & Go	•	•	•	•	–	–	–
All Wheel Drive	○	○	○	○	–	–	–
Multi-link rear suspension	○	○	○	○	•	•	•
Exterior Features	SE	SEL	N Line	Ltd	SE	SEL	Ltd
Automatic on/off headlights	•	•	•	•	•	•	•
LED Daytime Running Lights	•	•	•	•	•	•	•
LED headlights and LED taillights	–	–	–	•	–	–	•
High Beam Assist	–	–	–	•	–	–	•
N Line unique front and rear fascia	–	–	•	–	–	–	–
N Line grille and bodycolor cladding	–	–	•	–	–	–	–
Premium gray body cladding	–	–	–	•	–	–	–
Rear spoiler with center LED brake light	•	•	•	•	•	•	•
Heated side mirrors with turn signal indicators	•	•	•	•	•	•	•
Rain-sensing wipers	–	–	–	•	–	–	•
Roof side rails	–	•	•	•	–	–	–
Contrasting roof color	–	○	–	–	○	–	–
Power tilt-and-slide sunroof	–	•	•	•	–	•	•
Privacy rear glass	–	•	•	•	•	•	•
Interior Features	SE	SEL	N Line	Ltd	SE	SEL	Ltd
Remote keyless entry system with alarm	•	–	–	–	–	–	–
Proximity Key entry with push button start	–	•	•	•	•	•	•
Remote Start	–	•	•	•	•	•	•
Tilt-and-telescopic steering wheel with audio, phone and cruise controls	•	•	•	•	•	•	•
4.2" color multi-information display	•	•	–	–	–	–	–
10.25" digital instrument cluster display	–	–	•	•	•	•	•
Automatic temperature control	–	•	•	•	•	•	•
6-way adjustable driver seat with height adjustment	•	–	–	–	–	–	–
8-way power driver seat with power lumbar support	–	•	•	•	•	•	•

Interior Features	SE	SEL	N Line	Ltd	SE	SEL	Ltd
Heated front seats	–	•	•	•	•	•	•
Ventilated front seats and heated steering wheel	–	–	–	–	–	–	•
Leather-wrapped steering wheel	–	•	•	•	–	•	•
Leather-trimmed seating surfaces	–	–	–	•	–	–	•
N Line sport cloth seating surfaces	–	–	•	–	–	–	–
Aluminum sport pedals and black headliner	–	–	•	–	–	–	–
Smart Cruise Control with Stop & Go	–	–	–	•	–	–	•
60/40 split fold-flat rear seatbacks	•	•	•	•	•	•	•
Folding rear center armrest with dual cupholders	•	•	•	•	•	•	•
Power windows with front auto-down/up	–	•	•	•	•	•	•
Dual illuminated vanity mirrors with sunvisor extensions	–	•	•	•	•	•	•
Auto-dimming rearview mirror with HomeLink®	–	–	–	•	–	–	•
Ambient LED interior lighting	–	–	–	•	–	–	–
Rear View Monitor with Parking Guidance	•	•	•	•	•	•	•
Hidden cargo-area storage compartment	–	•	•	•	•	•	•
Advanced Safety	SE	SEL	N Line	Ltd	SE	SEL	Ltd
Forward Collision-Avoidance Assist with Pedestrian Detection	•	•	•	–	•	•	–
Forward Collision-Avoidance Assist with Pedestrian and Cyclist Detection	–	–	–	•	–	–	•
Lane Keeping Assist and Lane Following Assist	•	•	•	•	•	•	•
Driver Attention Warning	•	•	•	•	•	•	•
Rear Occupant Alert and Safe Exit Warning	•	•	•	•	•	•	•
Blind-Spot Collision-Avoidance Assist	•	•	•	•	•	•	•
Rear Cross-Traffic Collision-Avoidance Assist	•	•	•	•	•	•	•
Highway Driving Assist	–	–	–	•	–	–	•
Parking Distance Warning – Reverse	–	–	–	•	–	–	•
Audio & Connected Car Technology	SE	SEL	N Line	Ltd	SE	SEL	Ltd
8" color touchscreen audio system	•	•	–	–	•	–	–
10.25" high-resolution color touchscreen navigation system	–	•	•	•	–	•	•
Harman Kardon® 8-speaker premium audio with Clari-Fi™ Music Restoration Technology	–	–	–	•	–	–	•
Dynamic Voice Recognition	–	•	•	•	–	•	•
Android Auto™ and Apple CarPlay® (wireless wired)	• –	• •	– •	– •	• –	– •	– •
SiriusXM® Satellite Radio and HD Radio™	–	•	•	•	•	•	•
Wireless device charging and Hyundai Digital Key	–	•	•	•	–	•	•
Over-the-Air Map Updates	–	•	•	•	–	•	•
Bluelink® Connected Car System	–	•	•	•	•	•	•
Siri® and Google Now™ support	•	•	•	•	•	•	•
Front (dual) and rear USB charge ports	•	•	•	•	•	•	•

• Standard ○ Optional • SEL Convenience Package – Not Available Ltd = Limited Trim

KONA N

Power & Handling	SE	SEL	N Line	Ltd	SE	SEL	Ltd
276 hp/289 lb-ft, 2.0L Turbo GDI 4-cylinder engine	•	•	•	•	•	•	•
Active Sport Exhaust System	•	•	•	•	•	•	•
N 8-speed Wet Dual Clutch Transmission (N DCT) with paddle shifters	•	•	•	•	•	•	•
Launch Control and downshift rev matching	•	•	•	•	•	•	•
Rack-mounted Motor Driven Power Steering	•	•	•	•	•	•	•
N Power Shift and N Grin Shift	•	•	•	•	•	•	•
N Corner Carving Differential	•	•	•	•	•	•	•
Electronically Controlled Suspension	•	•	•	•	•	•	•
Multi-link rear suspension	•	•	•	•	•	•	•
14.2" front and 12.4" rear ventilated brake rotors	•	•	•	•	•	•	•
Exterior Features	SE	SEL	N Line	Ltd	SE	SEL	Ltd
Automatic on/off headlights with High Beam Assist	•	•	•	•	•	•	•
LED Daytime Running Lights	•	•	•	•	•	•	•
LED headlights and LED taillights	•	•	•	•	•	•	•
N logo front grille and bodycolor cladding	•	•	•	•	•	•	•
N-specific body styling and rear underbody air diffuser	•	•	•	•	•	•	•
Large-bore dual exhaust outlets	•	•	•	•	•	•	•
Heated side mirrors with turn signal indicators	•	•	•	•	•	•	•
Wing-type roof spoiler	•	•	•	•	•	•	•
Triangular Roof-mounted Center High-Mount Stop Light	•	•	•	•	•	•	•
N-exclusive 19" alloy wheels	•	•	•	•	•	•	•
19" Pirelli P Zero™ 235/40R19 summer performance tires	•	•	•	•	•	•	•
Interior Features	SE	SEL	N Line	Ltd	SE	SEL	Ltd
Proximity Key entry with push button start	•	•	•	•	•	•	•
10.25" digital instrument cluster display	•	•	•	•	•	•	•
Tilt-and-telescopic steering wheel with cruise controls	•	•	•	•	•	•	•
N-exclusive sport steering wheel, shift knob and instrument cluster	•	•	•	•	•	•	•

KONA N Popular Features



Driving status info display



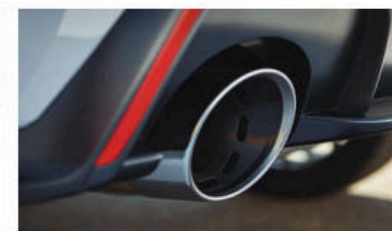
N 8-speed Wet Dual Clutch Transmission



High-performance braking system



Wing-type roof spoiler



Large-bore dual exhaust outlets

Interior Features	SE	SEL	N Line	Ltd	SE	SEL	Ltd
Automatic temperature control	•	•	•	•	•	•	•
8-way power driver seat with power lumbar support	•	•	•	•	•	•	•
N sport seats with black leather/suede combination seating surfaces	•	•	•	•	•	•	•
Heated front seats	•	•	•	•	•	•	•
60/40 split fold-flat rear seats	•	•	•	•	•	•	•
Aluminum pedals and black headliner	•	•	•	•	•	•	•
Customizable N1/N2 steering wheel buttons	•	•	•	•	•	•	•
Ambient LED interior lighting	•	•	•	•	•	•	•
Rear View Monitor with Parking Guidance	•	•	•	•	•	•	•
Advanced Safety	SE	SEL	N Line	Ltd	SE	SEL	Ltd
Forward Collision-Avoidance Assist with Pedestrian Detection	•	•	•	•	•	•	•
Lane Keeping Assist and Lane Following Assist	•	•	•	•	•	•	•
Driver Attention Warning	•	•	•	•	•	•	•
Blind-Spot Collision-Avoidance Assist	•	•	•	•	•	•	•
Rear Cross-Traffic Collision-Avoidance Assist	•	•	•	•	•	•	•
Safe Exit Warning and Rear Occupant Alert	•	•	•	•	•	•	•
Audio & Connected Car Technology	SE	SEL	N Line	Ltd	SE	SEL	Ltd
10.25" high-resolution color touchscreen navigation system	•	•	•	•	•	•	•
Harman Kardon® 8-speaker premium audio with Clari-Fi™ Music Restoration Technology	•	•	•	•	•	•	•
Dynamic Voice Recognition	•	•	•	•	•	•	•
Android Auto™ and Apple CarPlay®	•	•	•	•	•	•	•
SiriusXM® Satellite Radio and HD Radio™	•	•	•	•	•	•	•
Wireless device charging and Hyundai Digital Key	•	•	•	•	•	•	•
Over-the-Air Map Updates	•	•	•	•	•	•	•
Bluelink® Connected Car System	•	•	•	•	•	•	•
Siri® and Google Now™ support	•	•	•	•	•	•	•
Front (dual) and rear USB charge ports	•	•	•	•	•	•	•

• Standard



KONA

EPA Estimates (City/Highway/Combined)¹

30/35/32 MPG SE / SEL FWD Smartstream IVT

28/33/30 MPG SE / SEL AWD Smartstream IVT

29/35/32 MPG N Line / Limited FWD 7-speed EcoShift® DCT

27/32/29 MPG N Line / Limited AWD 7-speed EcoShift® DCT



KONA Electric

EPA Estimates (City/Highway/Combined)²

134/106/120 MPGe | 258 Maximum Driving Range (miles)



KONA N

EPA Estimates (City/Highway/Combined)¹

20/27/23 MPG N 8-speed Wet Dual Clutch Transmission

¹EPA estimates for comparison only. Mileage may vary. Your actual mileage will vary with options, driving conditions, driving habits and the vehicle's condition. ²MPGe is the EPA-equivalent measure of gasoline fuel efficiency for electric mode operation. Use for comparison only. Mileage may vary with driving conditions, driving habits, the vehicle's condition, the age/condition of the lithium ion battery, and other factors.



Hyundai Hope On Wheels®

Helping Kids Fight Cancer Since 1998



Hope comes standard on every Hyundai.

Each time we sell a Hyundai, a portion goes to Hyundai Hope On Wheels® to help find a cure for childhood cancer. Over the last 24 years, Hyundai Hope On Wheels has donated more than \$200 million. Hope is our greatest feature. And it comes standard on every Hyundai. For more information, please visit HyundaiHopeOnWheels.org.



America's Best Warranty

POWERTRAIN LIMITED WARRANTY	NEW VEHICLE LIMITED WARRANTY	ANTI-PERFORATION WARRANTY	24/7 ROADSIDE ASSISTANCE	HYBRID/ELECTRIC SYSTEM COMPONENTS
10 YEARS 100,000 MILES	5 YEARS 60,000 MILES	7 YEARS UNLIMITED MILES	5 YEARS UNLIMITED MILES	10 YEARS 100,000 MILES



Hyundai Complimentary Maintenance

Complimentary maintenance includes Hyundai-approved oil and oil filter change (except for electric vehicles and fuel cell electric vehicles) plus tire rotation at normal factory-scheduled maintenance intervals for 3 years or 36,000 miles, whichever comes first. More frequent maintenance due to severe driving or conditions excluded. Offer valid only for new 2020-2023 Hyundai models purchased or leased on or after February 1, 2020. See your Hyundai dealer for further details and limitations.



Owner Assurance

Our commitment to Hyundai owners does not end with the transfer of keys. Wherever the road takes you, we have got your back with Hyundai Owner Assurance, an umbrella of services and benefits that includes America's Best Warranty, 24/7 Roadside Assistance, innovative safety and car care features...and more.

See dealer for LIMITED WARRANTY details. Fuel economy estimated by EPA for comparison only. Mileage may vary. While the information contained in this brochure was correct at the time of printing, specifications and equipment can change. Feature comparisons based on competitor information available at the time of printing. No warranty or guarantee is being extended in this brochure, and Hyundai reserves the right to change product specifications and equipment at any time without incurring obligations. Some vehicles are shown with optional equipment. Specifications apply to U.S. vehicles only. Please contact your Hyundai dealer for current vehicle specifications. As part of Hyundai's commitment to a responsible environment, this brochure was printed using paper certified by the Forest Stewardship Council®. FSC® certification helps ensure that the highest social and environmental standards are met in the making of the paper we use, contributing to conservation, responsible management and community-level benefits for people near the forests.



©2022 HYUNDAI NP020K2023