

2024

KONA





High tech meets high adventure.

Time sure flies when you're having fun. It's been five years since Hyundai introduced the original Kona – a vehicle so groundbreaking, it was the first small SUV to be named North American Utility Vehicle of the Year. Then, thanks to its combination of refined sportiness and rugged utility, Kona was named 2023 Best Subcompact SUV for the Money by *U.S. News & World Report*.¹

Fast forward to now, and take a look at the all-new 2024 Hyundai Kona. Reimagining what's the right size for right now, the new Kona adds space where it matters most. Kona is now bigger inside, with more legroom for your passengers and 33% more cargo space. The new cabin is ultramodern, too, with available dual 12.3" integrated digital displays forming the focal point of a driver-oriented cockpit. The new Kona is also quieter, thanks to advanced acoustical engineering.

Outside, Hyundai designers created a Kona that's bolder, sleeker, and a paragon of aerodynamic efficiency. With its parametric surfacing, sharp creases and available Seamless Horizon Daytime Running Light, the new 2024 Kona sends a clear signal regarding the shape of things to come.

Trim levels ranging from Kona SE, SEL, N Line and Limited, along with available HTRAC AWD, offer a variety of appealing choices. Which Kona is right for you? Whatever you decide, you'll be in good company. More people who buy a Hyundai buy another – more than any other vehicle at any price. According to global brand research consultancy Brand Keys, Hyundai has ranked #1 in customer loyalty 14 years in a row.²

¹View U.S. News Best Cars at cars.usnews.com. ²Based on Brand Keys 2010, 2011, 2012, 2013, 2014, 2015, 2016, 2017, 2018, 2019, 2020, 2021, 2022 and 2023 Customer Loyalty Engagement Index®.



Quiet confidence.
 Wrapped in vivid colors.

KONA Limited in Soultronic Orange Pearl

Whatever journeys you have planned, Kona lets you make them with quiet confidence. It starts with a choice of engines. A 2.0L Atkinson Cycle Smartstream engine and Intelligent Variable Transmission offer the 2024 Kona SE and SEL seamless performance and efficiency. Kona Limited and N Line trims couple a turbocharged 1.6L GDI engine with a new 8-speed automatic transmission that pours up to 190 horsepower and 195 lb-ft of torque onto the pavement through stylish 19" wheels.

No matter which Kona you choose, you'll enjoy Drive Mode Select, a feature that lets you determine your preferred driving dynamics. There's Normal, Sport and – on HTRAC AWD

models – a Snow mode. Kona HTRAC AWD models also have a higher ride height and over eight inches of ground clearance, opening up all kinds of possibilities for tackling tougher terrains with additional levels of poise and conviction.

The quiet part? In reimagining the 2024 Kona, Hyundai engineers set their sights on sound. The improved design of engine mounts and suspension bushings helps reduce road noise and vibration. Improved seals around the doors and hood, along with a new side mirror design, help hush wind noise. The result is a cabin so quiet, you'll arrive at the end of the longest journeys feeling relaxed and refreshed.

¹ Safety features vary by model and trim level. For details, refer to the Features chart in this brochure or visit HyundaiUSA.com. ² Lane Keeping Assist operates only when the lane markings are clearly visible on the road. It will not work under all circumstances and will not prevent loss of control. It is a supplemental assist and does not replace the need for extreme care and attention by the driver. It uses a camera in the upper windshield area, so it is imperative this area be free of blockage such as stickers, dirt, snow, tinting material, markings and labels. Avoid putting objects on the dashboard that may reflect light or images onto the system camera area. See Owner's Manual for details and limitations. ³ Blind-Spot Collision Warning (BCW) warns you of other cars in the blind-spot region to help prevent an unsafe lane change. It also helps prevent collisions when exiting parallel parking spots by alerting the driver to a potential hazard. Never rely exclusively on BCW as it is not a substitute for attentive driving. Always look over your shoulder and use your mirrors to confirm clearance. There are limitations to the function, detection, range and clarity of the system. BCW may not function correctly if one or more of the parking sensors is damaged, dirty or covered, or if weather conditions (heavy rain, snow or fog) are interfering with sensor operation. See Owner's Manual for details and limitations. ⁴ Highway Driving Assist (HDA) is for highway use only and can help maintain a safe distance from the vehicle ahead while keeping your vehicle centered in its lane when lane markings are clearly visible on the road. HDA should not be used in poor weather, heavy or varying traffic, or on winding or slippery roads. HDA will not work under all circumstances and will not prevent loss of control. Driver remains responsible to slow or stop the vehicle to avoid a collision. See Owner's Manual for details and limitations. ⁵ The Blind-Spot View Monitor (BVM) assists the driver in changing lanes by providing a live view of the blind spots on either side of the vehicle and an audible alert if another vehicle is detected. Turn signal must be activated, and other system limitations apply. Do not rely exclusively on BVM. It is the driver's responsibility to be aware of the surroundings and ensure it is clear before changing lanes or directions. See Owner's Manual for details and limitations. ⁶ Forward Collision-Avoidance Assist with Junction Turning (FCA-JT) is intended to be a supplement to safe driving practices. The system is not designed to detect certain stationary objects such as trees or poles, and may not detect all vehicles, pedestrians or cyclists under certain conditions. The system's Junction Turning function operates when the vehicle's left turn signal is activated, the vehicle is traveling between approximately 6-19 mph and the oncoming vehicle's speed is between approximately 19-44 mph. The system is a driver assistance system and is not a substitute for safe driving. The driver is responsible for being attentive and maintaining control of the vehicle, and should not wait for the system's alerts before braking as there may not be sufficient time to brake safely. See Owner's Manual for details and limitations. ⁷ Parking Collision-Avoidance Assist – Reverse (PCA-R) can alert the driver of a potential hazard while reversing by providing an audible warning and/or applying braking. PCA-R is active when the vehicle is in reverse and operating at low speeds. Never rely exclusively on PCA-R. PCA-R cannot prevent all collisions and may not provide alerts or braking in all conditions. Always look over your shoulder and use your mirrors to confirm rear clearance. There are limitations to the function, detection, range and clarity of the system. See Owner's Manual for details and limitations. ⁸ Remote Smart Parking Assist (RSPA) can remotely help park the vehicle. However, several factors can impact RSPA performance. RSPA may not function correctly if one or more of the parking sensors is damaged, dirty or covered, or if weather conditions (heavy rain, snow or fog) interfere with sensor operation. Always inspect the parking area with your own eyes. See Owner's Manual for details and limitations. ⁹ Government 5-Star Safety ratings are part of the National Highway Traffic Safety Administration's (NHTSA) New Car Assessment Program (nhtsa.gov).

The new face of safety.

Look into the eyes of Kona, and you'll see the soul of safety. Hyundai SmartSense, our suite of advanced safety and driver-assist technologies, monitors your surroundings from nearly every angle to help alert you to potential collisions.¹ Whenever your Kona senses a situation that activates Lane Keeping Assist² or Blind-Spot Collision Warning,³ it can now alert you using haptic feedback through the steering wheel.

Highway Driving Assist is available to help maintain a safe cruising distance between your Kona and the vehicle in front of you, while also keeping you centered in your lane.⁴ An available Blind-Spot View Monitor helps negotiate lane changes by showing video of either blind spot in the instrument cluster after you activate the turn signal.⁵

To help you see and react to what's in front of you, Kona comes standard with Forward Collision-Avoidance Assist (FCA). For 2024, FCA is available with technology that detects potential collisions with oncoming traffic or vehicles in your path when you've signaled to turn left at an intersection.⁶ Embedded within the headlight clusters are standard projector LED headlamps, whose penetrating beam transforms your visibility during nighttime driving.

Parking? Kona Limited helps alleviate the stress of chaotic parking lots. Its Parking Distance Warning – Reverse/Forward/Side feature with a new Contour Warning provides visual and audio alerts based on the proximity of surrounding objects. Parking Collision-Avoidance Assist – Reverse automatically assists with emergency braking if the risk of a collision increases after the warning.⁷ Using buttons on your key fob, you can also pull your Kona Limited into and out of tight parking spaces using Remote Smart Parking Assist from outside of the vehicle.⁸



HTRAC All Wheel Drive



Surround View Monitor



Blind-Spot View Monitor



Hyundai SmartSense Technologies





¹The hands-free smart liftgate will open when your Proximity Key is within 3 feet of the detection area for at least 3 seconds. Radio transmitters and other vehicle smart keys may interfere with normal operation. Please consult your Owner's Manual for details and limitations. ²Requires active data plan from Verizon and acceptance of Hyundai Motor America Connected Services Terms and Conditions. Coverage and service are not available in all areas. Wi-Fi hotspot is intended for passenger use only. Only use Wi-Fi and connected devices when safe to do so. For terms and conditions, see www.verizon.com/plans/connected-car. ³Qi wireless charging function is based on smartphone compatibility and/or specific accessory cases. ⁴Dynamic Voice Recognition varies by unit. Certain functions such as weather information and sports scores require an active Bluelink subscription and an Internet connection. Speak in a normal voice and minimize background noise for best results. See Owner's Manual for details and limitations.

KONA Limited in Black H-Tex™

In the mood for modern.

Your new Kona is designed to be just that – *your* Kona. Settle into Kona Limited's driver-oriented high-tech interior, and you can conform your surroundings to your sensibilities. Choose among 64 colors for ambient lighting that sets the mood within its more spacious cabin. A wide floating dash that accentuates the cabin's uncluttered space features a customizable 12.3" digital instrument cluster with an advanced graphics style that emphasizes what's essential.

Kona's 60/40 split fold-flat 2nd-row seats can be configured to suit each trip's mix of cargo and passengers. Loading the wider, taller rear cargo area is easy, thanks to a lower lift-over height and an available hands-free smart power liftgate with auto open.¹ A dual-level cargo floor provides additional cargo depth for taller items.

Look around you, and class-leading premium amenities are seemingly everywhere. An available 8-speaker Bose® premium audio system keeps you entertained. Heated and ventilated front seats, a heated steering wheel and dual automatic temperature control with 2nd-row air vents are available to keep you comfortable. The multi-function center console is available with rotary-type cupholders and a removable partition for convenient flat storage. Overhead, there is an available power tilt-and-slide sunroof that's exceptionally wide for an expansive opening.

An available integrated Wi-Fi hotspot can connect your devices without you having to deal with mobile hotspot hardware or constantly turning your smartphone's hotspot on and off.² Dual front and 2nd-row USB ports and an available wireless phone charger keep everyone charged up.³ And with Kona's available Dynamic Voice Recognition, you can switch radio stations, check the stock market or find the nearest gas station using natural-language voice commands.⁴



60/40 split fold-flat 2nd-row seatbacks



Wide 12.3" display with Apple CarPlay®



Steering column-mounted Shift-by-Wire



Multi-function center console storage



Hands-free smart liftgate with auto open

Introducing Bluelink+: No fees. No trial. No worries.

With the introduction of Bluelink+, Hyundai becomes the first automotive brand to offer its suite of connected car features to new car purchasers at no extra cost. Bluelink+ is complimentary with the purchase of your new 2024 Kona.¹

Your MyHyundai app turns your compatible smartphone, smartwatch or smart home assistant device into a Bluelink remote control that can unlock your Kona's doors and start the engine and climate controls before you walk out the door.²

Bluelink features technologies designed to help keep you safe – from automatic collision notifications to automatic emergency assistance if your airbags deploy and enhanced roadside assistance that sends your exact location to a roadside assistance associate.² Bluelink also includes helpful maintenance features like remote diagnostics and monthly vehicle health reports. All complimentary with a 2024 Kona new vehicle purchase for the life of the supporting wireless network technology.³

Enter your Kona using the Digital Key 2 Touch available for your compatible smartphone or wearable device, and your radio and navigation system presets are set using your Bluelink personal profile.⁵ Apple Wallet® and Samsung Pass® let you share your digital key with trusted friends and family members⁶ – as the primary driver, you can control when a shared key can be used, and pause or end shared-key access at any time.



Automatic Emergency Assistance

Bluelink offers you 24/7 SOS Emergency Assistance as well as Automatic Collision Notification that calls for help if you're in an accident where your vehicle's airbags deploy.



On-Demand Diagnostics

Run vehicle diagnostics from your touchscreen, report issues at the press of a button and receive monthly vehicle health reports or maintenance reminders by email.



Remote Vehicle Controls

Your compatible smartphone, smart speaker or wearable device let you remotely start your Kona's engine, set the cabin temperature, unlock the doors and more.



Destination Send-to-Car

Use the MyHyundai app to find addresses, restaurants or other points of interest and send the destination to your Kona's available navigation system before you start to drive.



Remote Vehicle Status

Wondering how much fuel is in your tank? If your vehicle's liftgate is open or the doors are unlocked? Your MyHyundai app knows the answers to these questions and more.



Driver Profile Management

When using remote start or your Digital Key 2 Touch, the radio presets, navigation destinations and other Bluelink profile settings are intact the moment you take a seat inside of your Kona.⁷



KONA Limited in Soultronic Orange Pearl

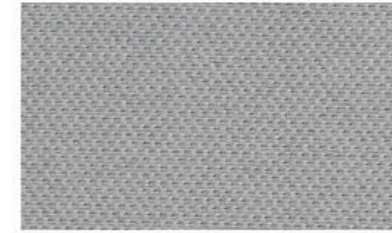


Digital Key 2 Touch



Wireless phone charger

Interior Colors



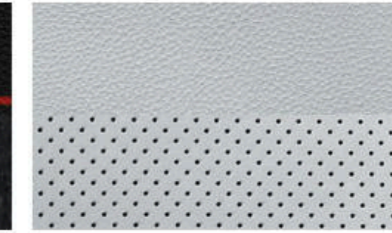
Gray Cloth
SE / SEL / SEL Convenience



Black Cloth
SE / SEL / SEL Convenience



Black Alcantara® Sport Combination
N Line

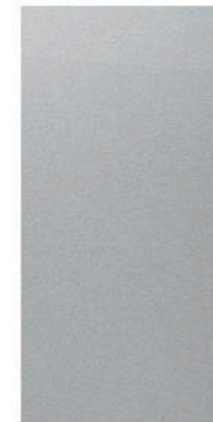


Gray H-Tex™
Limited



Black H-Tex™
Limited

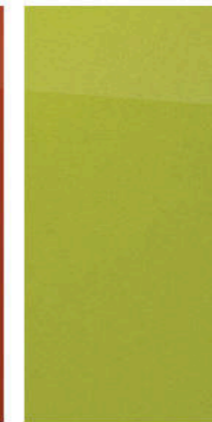
Exterior Colors



Cyber Gray Metallic



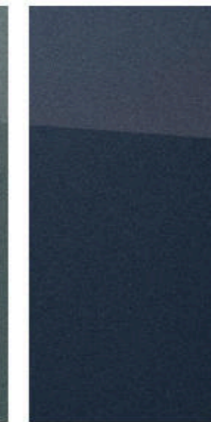
Soultronic Orange Pearl



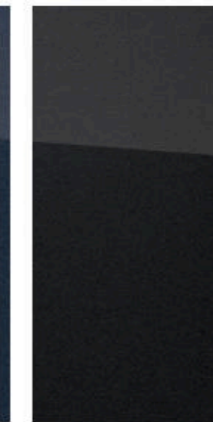
Neoteric Yellow



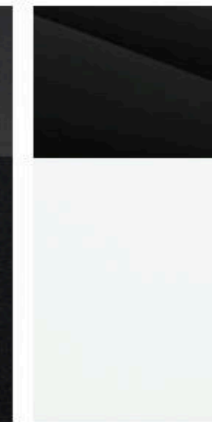
Mirage Green



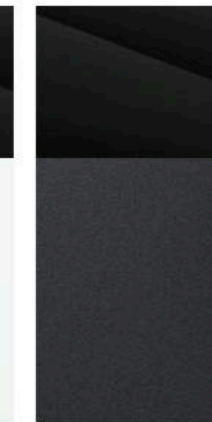
Denim Blue Pearl



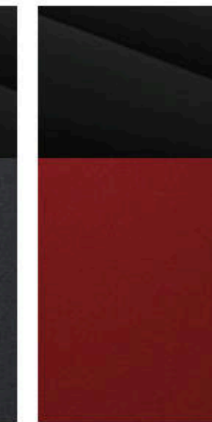
Abyss Black Pearl



Atlas White*



Ecotronic Gray Pearl*



Ultimate Red Metallic*

*Black Roof available on N Line trim

Wheels

17" Alloy Wheel
SE



18" Alloy Wheel
SEL / SEL Convenience



19" Alloy Wheel
N Line



19" Alloy Wheel
Limited



¹Bluelink+ requires an active subscription agreement subject to the Connected Services Terms and Conditions. Term starts from the new vehicle date of first use. Only use Bluelink and corresponding devices when safe to do so. Cellular and GPS coverage is required. Features, specifications and fees are subject to change. A fee will apply for map and multimedia over-the-air (OTA) updates, which are dependent on an active Bluelink connection, after an initial 3-year period of complimentary updates. For details and limitations, visit HyundaiUSA.com or your authorized Hyundai dealer. ²Bluelink agents will contact existing emergency service responders. ³All Bluelink services rely on digital wireless telecommunications technology outside of our control and in the control of the wireless carriers who provide the telecommunications technology. 4G LTE cellular networks are controlled and maintained by third-party wireless carriers. Telecommunication technologies have been known to change over time. If and when these networks change and discontinue services or the underlying technology required to support Bluelink is obsolete, then the connected services will not work and we will be forced to cancel impacted subscription services. ⁴Requires active Bluelink Advanced subscription (complimentary for the original owner). Remote climate control available on properly equipped models with fully automatic temperature control. Remote stop only available when in remote start mode. ⁵Near Field Communication (NFC) digital key requires a compatible iPhone, Apple Watch® or Samsung Galaxy® phone. Not all Android, Apple or Samsung devices are compatible. Digital Key 2 Touch sharing requires an active Bluelink Advanced subscription (complimentary for the original owner). See your Owner's Manual for details and limitations. ⁶Apple® is a registered trademark of Apple Inc. Samsung® is a registered trademark of Samsung Electronics Inc. ⁷Bluelink profile settings vary by trim level.

KONA SE

Smartstream 2.0L MPI 4-Cylinder Engine

147 HP

132 LB-FT



Popular Features
12.3" Display Audio with AM/FM/SiriusXM®/HD Radio™
Android Auto™ and Apple CarPlay®
Automatic LED Projector Headlights with High Beam Assist
LED Daytime Running Lights and LED taillights
Blind-Spot Collision Warning
Rearview camera Rear Cross-Traffic Collision-Avoidance Assist
Front and 2nd-row USB ports

KONA N Line

Smartstream 1.6L Turbo GDI 4-Cylinder Engine

190 HP

195 LB-FT



Popular Features
N Line twin-tip exhaust and unique front & rear fascias
N Line grille & bodycolor cladding
Black side mirrors
N Line seats with Black Alcantara® Sport Combination seating surfaces
Power tilt-and-slide sunroof
Bose® premium audio with 8 speakers
19" alloy wheels

KONA

EPA MPG Estimates

(City/Highway/Combined)

29/34/31 MPG

SE 2.0L FWD IVT

28/35/31 MPG

SEL / SEL Conv. 2.0L FWD IVT

26/32/28 MPG

N Line / Limited 1.6T FWD 8-speed A/T

27/29/28 MPG

SE 2.0L AWD IVT

26/29/27 MPG

SEL / SEL Conv. 2.0L AWD IVT

24/29/26 MPG

N Line / Limited 1.6T AWD 8-speed A/T

EPA estimates are for comparison only. Mileage may vary. Your actual mileage will vary based on options, driving conditions, driving habits and the vehicle's condition.

KONA SEL

Smartstream 2.0L MPI 4-Cylinder Engine

147 HP

132 LB-FT



Popular Features
Heated side mirrors with LED turn signal indicators
8-way power driver seat with power lumbar support
Dual automatic temperature control and auto-defogging windshield
Leather-wrapped steering wheel
2nd-row air conditioning vents
Roof side rails and aero wiper blades
18" alloy wheels

SEL Convenience Package

12.3" Digital instrument cluster
Column-mounted Shift-by-Wire gear selector with paddle shifters
Heated front seats
Power windows with front auto-down/up
LED interior lights
Auto-dimming rearview mirror
Wireless phone charger
Forward Collision-Avoidance Assist with Pedestrian/Cyclist Detection and Junction Turning Detection
Highway Driving Assist
Smart Cruise Control with Stop & Go
12.3" Navigation system
Dynamic Voice Recognition
Digital Key 2 Touch
Wi-Fi hotspot (requires active data plan subscription)

KONA Limited

Smartstream 1.6L Turbo GDI 4-Cylinder Engine

190 HP

195 LB-FT



Popular Features
Blind-Spot View Monitor and Surround View Monitor
Parking Distance Warning – Reverse/Forward/Side with Contour Warning
Parking Collision-Avoidance Assist – Reverse
H-Tex™ seating surfaces and ventilated front seats
Heated steering wheel and ambient interior lighting
Hands-free smart liftgate with auto open & adjustable height setting
Remote Smart Parking Assist

HTRAC All Wheel Drive Option

Temporary Spare Tire (N Line/Limited)	Multi-link rear suspension
HTRAC All Wheel Drive & Snow Mode	HTRAC liftgate badge

Exterior Dimensions	KONA
Wheelbase	104.7 in
Overall Length (N Line)	171.3 (172.6) in
Overall Width	71.9 in
Overall Height (with roof rails) FWD 17" & 18" / 19"	62.2 (62.4) / 62.4 (62.6) in
Overall Height (with roof rails) AWD 17" & 18" / 19"	63.2 (63.4) / 63.4 (63.6) in

Interior Dimensions	KONA
Headroom – front (with sunroof) / 2nd-row	39.9 (38.3) / 38.3 in
Legroom – front / 2nd-row	41.7 / 38.2 in
Shoulder Room – front / 2nd-row	56.8 / 55.2 in
Passenger Interior Volume (with sunroof)	101.2 (99.0) cu ft
Cargo Capacity 2nd-row seats up / down	25.5 / 63.7 cu ft
Total Interior Volume (with sunroof)	126.7 (124.5) cu ft

KONA

Power & Handling	SE	SEL	N Line	Limited
147 hp/132 lb-ft, 2.0L MPI Atkinson Cycle 4-cylinder engine	●	●	–	–
190 hp/195 lb-ft, 1.6L Turbo GDI 4-cylinder engine	–	–	●	●
Smartstream Intelligent Variable Transmission (IVT)	●	●	–	–
8-speed automatic transmission (A/T)	–	–	●	●
Column-mounted Shift-by-Wire gear selector with paddle shifters	–	●	●	●
Drive Mode Select	●	●	●	●
Electronic Parking Brake	●	●	●	●
4-wheel disc brakes	●	●	●	●
Hillstart Assist Control and Downhill Brake Control	●	●	●	●
HTRAC All Wheel Drive	○	○	○	○
Multi-link rear suspension	○	○	○	○

Exterior Features	SE	SEL	N Line	Limited
Active grille shutters	●	●	●	●
Automatic headlights with High Beam Assist	●	●	●	●
LED projector-type headlights	●	●	●	●
LED Daytime Running Lights and LED taillights	●	●	●	●
Heated side mirrors with LED turn signal indicators	–	●	●	●
Bodycolor side mirrors	●	●	–	●
Black side mirrors and N Line wing-type rear spoiler	–	–	●	–
Satin chrome window and rear spoiler accent	–	–	–	●
Rear spoiler with center LED brake light	●	●	●	●
N Line unique front and rear fascias	–	–	●	–
N Line grille and bodycolor cladding	–	–	●	–
Contrasting black roof color	–	–	○	–
Roof side rails	–	●	●	●
Aero wiper blades	–	●	●	●
Power tilt-and-slide sunroof	–	–	●	●
Hands-free smart liftgate with auto open and adjustable height setting	–	–	–	●
Rear privacy glass	–	●	●	●

Interior & Convenience Features	SE	SEL	N Line	Limited
Proximity Key with push button start	●	●	●	●
4.2" Digital cluster	●	●	–	–
12.3" Digital instrument cluster	–	●	●	●
Tilt-and-telescopic steering wheel with audio, phone and cruise controls	●	●	●	●
Leather-wrapped steering wheel	–	●	●	●
Heated steering wheel and ambient interior lighting	–	–	–	●
8-way power driver seat with power lumbar support	–	●	●	●

Interior & Convenience Features	SE	SEL	N Line	Limited
Heated front seats	–	●	●	●
H-Tex™ seating surfaces and ventilated front seats	–	–	–	●
N Line seats with Black Alcantara® Sport Combination seating surfaces	–	–	●	–
Aluminum sport pedals and black headliner	–	–	●	–
Dual automatic temperature control and auto-defogging windshield	–	●	●	●
2nd-row air conditioning vents	–	●	●	●
Smart Cruise Control with Stop & Go	–	●	●	●
LED interior lights	–	●	●	●
Auto-dimming rearview mirror with HomeLink®	– –	● –	● –	– ●
Reclining 60/40 split fold-flat 2nd-row seats with center armrest	●	●	●	●
Remote Smart Parking Assist	–	–	–	●
Rearview camera	●	●	●	●

Advanced Safety	SE	SEL	N Line	Limited
Forward Collision-Avoidance Assist with Pedestrian/Cyclist Detection	●	●	–	–
Forward Collision-Avoidance Assist with Pedestrian/Cyclist Detection and Junction Turning Detection	–	●	●	●
Lane Keeping Assist and Lane Following Assist	●	●	●	●
Driver Attention Warning / Rear Occupant Alert / Safe Exit Warning	●	●	●	●
Blind-Spot Collision Warning	●	●	●	●
Rear Cross-Traffic Collision-Avoidance Assist	●	●	●	●
Intelligent Speed Limit Assist	●	●	●	●
Highway Driving Assist	–	●	●	●
Blind-Spot View Monitor and Surround View Monitor	–	–	–	●
Parking Distance Warning – Reverse/Forward/Side with Contour Warning	–	–	–	●
Parking Collision-Avoidance Assist – Reverse	–	–	–	●

Audio & Connected Car Technology	SE	SEL	N Line	Limited
12.3" Display Audio with AM/FM/HD Radio™	●	●	–	–
12.3" Navigation system	–	●	●	●
SiriusXM® Satellite Radio	●	●	●	●
Android Auto™ and Apple CarPlay®	●	●	●	●
Bose® premium audio with 8 speakers	–	–	●	●
Dynamic Voice Recognition	–	●	●	●
Wireless phone charger	–	●	●	●
Wi-Fi hotspot (requires active data plan subscription)	–	●	●	●
Digital Key 2 Touch	–	●	●	●
Bluelink+ Connected Car System	●	●	●	●
USB ports: Front (1 data/charge + 1 charge), 2nd row (2 charge)	●	●	●	●

● Standard ○ Optional ● SEL Convenience Package – Not Available



Hope comes standard on every Hyundai.

Each time we sell a Hyundai, a portion goes to Hyundai Hope On Wheels® to help find a cure for childhood cancer. Over the last 25 years, Hyundai Hope On Wheels has donated \$225 million to pediatric cancer research. Hope is our greatest feature. And it comes standard on every Hyundai. For more information, please visit HyundaiHopeOnWheels.org.



America's Best Warranty

POWERTRAIN LIMITED WARRANTY

10 YEARS 100,000 MILES

NEW VEHICLE LIMITED WARRANTY

5 YEARS 60,000 MILES

ANTI-PERFORATION WARRANTY

7 YEARS UNLIMITED MILES

24/7 ROADSIDE ASSISTANCE

5 YEARS UNLIMITED MILES



Hyundai
Complimentary
Maintenance

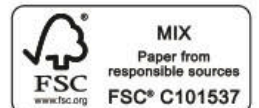
Complimentary maintenance includes Hyundai-approved oil and oil filter change (except for electric vehicles and fuel cell electric vehicles) plus tire rotation at normal factory-scheduled maintenance intervals for 3 years or 36,000 miles, whichever comes first. More frequent maintenance due to severe driving or conditions excluded. Offer valid only for new 2020-2024 Hyundai models purchased or leased on or after February 1, 2020. See your Hyundai dealer for further details and limitations.



Owner
Assurance

Our commitment to Hyundai owners does not end with the transfer of keys. Wherever the road takes you, we have got your back with Hyundai Owner Assurance, an umbrella of services and benefits that includes America's Best Warranty, 24/7 Roadside Assistance, innovative safety and car care features...and more.

While the information contained in this brochure is based on the latest information available at the time of printing, specifications and equipment can change. Feature comparisons are based on competitor information available at the time of printing. Although the information contained in this brochure is believed to be correct, accuracy cannot be guaranteed. No warranty or guarantee is being extended in this brochure, and Hyundai reserves the right to change product specifications and equipment at any time, without notice, without incurring obligations. Some vehicles are shown with optional equipment. Specifications apply to U.S. vehicles only. Please contact your Hyundai dealer or visit HyundaiUSA.com for current vehicle specifications or details on any of the programs or services listed here. As part of Hyundai's commitment to a responsible environment, this brochure was printed using paper certified by the Forest Stewardship Council®. FSC® certification helps ensure that the highest social and environmental standards are met in the making of the paper we use, contributing to conservation, responsible management and community-level benefits for people near the forests.



©2023 HYUNDAI NP020K2024