

2021 Hyundai

# NEXO





**We discovered a better alternative.  
Now you have, too.**

NEXO Limited in Copper Metallic

At Hyundai, our belief in making things better for people has led us to develop all kinds of innovative ideas and advanced technologies. But few are as transformative as NEXO – the world’s first dedicated hydrogen fuel cell SUV. The electricity powering its 161-hp electric motor is created by combining hydrogen fuel with oxygen from the ambient air. The only emission? A few droplets of water. Refueling takes about five minutes or less, so NEXO is a highly practical alternative, too.<sup>1</sup> No need to plan your evenings around lengthy electric vehicle plug-in times.

With NEXO, you’ll have two alternatives for how you go alternative: The Blue model features an EPA-estimated 65 MPGe rating in the city and an estimated driving range of 380 miles<sup>2</sup> – a benchmark for alternative fuel vehicles. NEXO Limited combines an array of additional luxury features and safety technologies with an EPA-estimated 59 MPGe<sup>2</sup> in the city. Without the noise of a gas engine, the five-passenger NEXO is remarkably quiet, too. Press the accelerator pedal, and NEXO responds with a hushed whoosh and the powerful thrust of 291 lb-ft of torque.

<sup>1</sup>Fueling time will vary based on ambient temperature, hydrogen fueling pressure, current fill level and other factors. <sup>2</sup>MPGe is the EPA-equivalent of gasoline fuel efficiency for electric mode operation. Use for comparison purposes only. Mileage may vary depending on driving conditions, driving habits, vehicle condition, the age/condition of the lithium-ion polymer battery and other factors. <sup>3</sup>Lane Following Assist (LFA), when actively engaged with Smart Cruise Control, can help keep your vehicle centered in its lane only when the lane markings are clearly visible on the road. LFA will not work under all circumstances and will not prevent loss of control. LFA is a supplemental assist and does not replace the need for extreme care and attention by the driver. See Owner’s Manual for details. <sup>4</sup>Blind-Spot View Monitor (BVM) assists the driver in changing lanes by providing a live view of the blind spots on either side of the vehicle, and an audible alert if another vehicle is detected. Turn signal must be activated and other system limitations apply. Do not rely exclusively on BVM. It is the driver’s responsibility to be aware of the surroundings and ensure it is clear before changing lanes or directions. See Owner’s Manual for more information. <sup>5</sup>To qualify for 2020 TOP SAFETY PICK+, a vehicle must earn good ratings in the driver-side small overlap front, passenger-side small overlap front, moderate overlap front, side, roof strength and head restraint tests. It also must earn an advanced or superior rating for vehicle-to-vehicle and vehicle-to-pedestrian front crash prevention and come with standard acceptable- or good-rated headlights.

## Preserve your environment.

To create NEXO’s eco-friendly interior, innovative bio-based materials were applied on 47 different parts. The headliner is woven from bamboo. The carpet fibers are spun from sugarcane. The interior trim’s color dyes are extracted from soybeans and canola oil, and the leatherette seating surfaces are vegan-based.

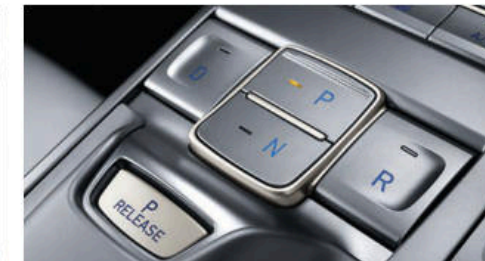
Below the surface, an ultra-rigid body structure forged with advanced high-strength steel helps preserve the integrity of the passenger cabin in the event of a collision. To help avoid that from happening, a suite of Hyundai SmartSense technologies alert and assist the driver. Lane Following Assist helps keep NEXO centered in its lane of travel and lends the driver a hand with subtle steering corrections.<sup>3</sup> Need to change lanes? NEXO Limited’s Blind-Spot View Monitor displays wide-angle views of your blind spots on the instrument cluster, allowing you to see more than you would in the rearview mirror alone.<sup>4</sup>



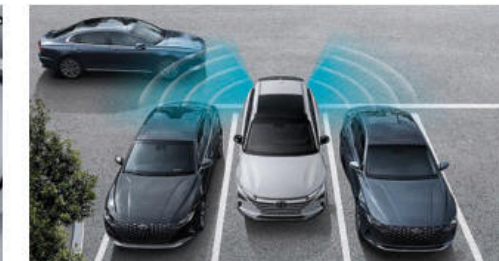
12.3" touchscreen display with energy flow chart



Blind-Spot View Monitor

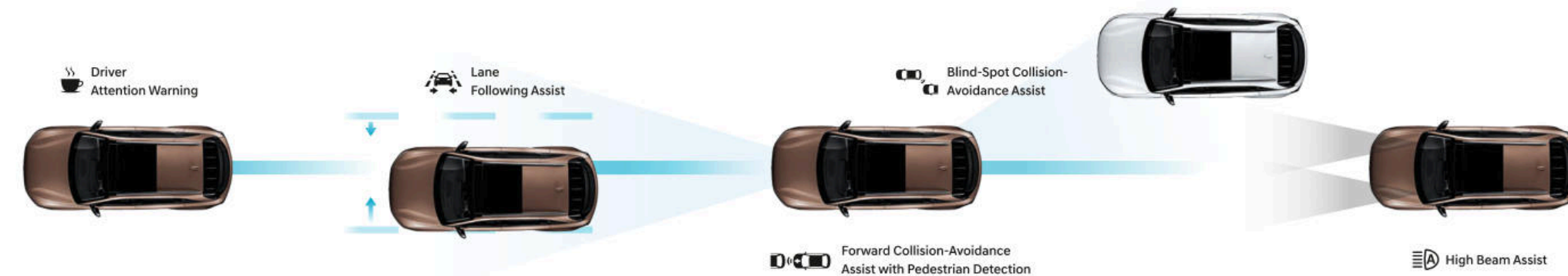


Shift-by-Wire push-button drive selector



Rear Cross-Traffic Collision-Avoidance Assist

## SmartSense Safety Technologies





\*The hands-free smart liftgate will open when your Proximity Key is within 3 feet of the detection area for at least 3 seconds. Radio transmitters and other vehicle smart keys may interfere in normal operation. See Owner's Manual for further details and limitations. <sup>2</sup>Remote Smart Parking Assist can autonomously help park the vehicle. However, several factors can reduce the performance of this feature. Remote Smart Parking Assist may not function correctly if one or more of the parking sensors is damaged, dirty or covered, or if weather conditions (heavy rain, snow or fog) interfere with sensor operation. Always inspect the parking area with your own eyes. See Owner's Manual for further details and limitations.

NEXO Limited in Stone Gray Bio-Based Leatherette

## Room for all that matters to you.

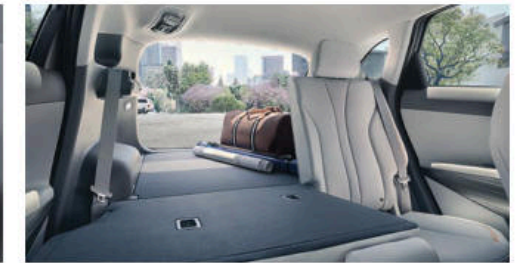
NEXO isn't powered by those bulky battery packs that take away from your interior room in a traditional electric vehicle. So there's more space for what matters to you – like extra front and rear legroom. The 8-way power driver seat with power lumbar support and 6-way power front passenger seat are both heated. NEXO Limited adds ventilated front seats to help keep you cool. Behind the 60/40 split-folding rear seats, there's plenty of space to load your belongings and stow them out of sight, thanks to a cargo cover and rear privacy glass. Accessing all of that space is easy, thanks to NEXO's hands-free smart liftgate.<sup>1</sup>

The spacious NEXO even leaves room for a huge 12.3" touchscreen audio and navigation display. On NEXO Limited, the touchscreen controls a 440-Watt Krell® Premium Audio system with an 8-channel amplifier, an 8" subwoofer and Live Dynamic sound algorithm technology that restores the fullness lost in compressed digital music.

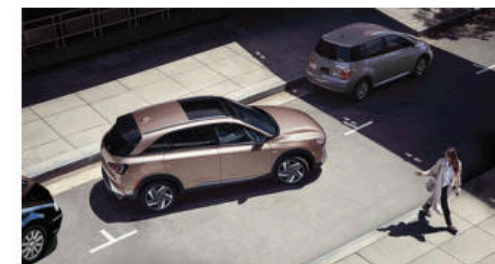
NEXO Limited's innovation continues even after you exit your vehicle, thanks to Remote Smart Parking Assist. Push a button on your Smart Key, and NEXO parks itself in a parallel or perpendicular space with the driver inside – or outside – the vehicle. You can also use Smart Key controls to remotely move your vehicle backward and forward.<sup>2</sup>



Rear View Monitor with Parking Guidance



60/40 split-folding rear seats



Remote Smart Parking Assist



Hands-free smart liftgate with height adjustment

# With Hyundai Blue Link, technology powers your day.

Hyundai's Blue Link<sup>®</sup> connected car technology transforms your NEXO into an extension of your highly connected life.<sup>1</sup> It starts with Blue Link Connected Care. Complimentary for your first 3 years, it offers exceptional peace of mind with 24/7 access to Enhanced Roadside Assistance, SOS Emergency Assistance,<sup>2</sup> Monthly Vehicle Health Reports and more.

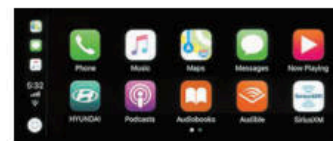
If you're like most Hyundai owners, the Blue Link feature you'll use most is Remote Access.<sup>3</sup> Using our MyHyundai app on your smartphone or smartwatch, or your Amazon Echo<sup>®</sup> or Google Home<sup>™</sup> device,<sup>4</sup> you can remotely start your NEXO and activate the climate controls, lock/unlock the doors or locate your vehicle in a crowded parking lot.

Before entering your car, Blue Link Guidance lets you use your smartphone to search, download and send addresses and points of interest (including the location of nearby hydrogen fueling stations) directly to your NEXO's navigation system.<sup>5</sup>

Of course, Blue Link is just one of the ways NEXO makes life easier. With Apple CarPlay<sup>®</sup> and Android Auto,<sup>™</sup> NEXO connects to your smartphone and displays familiar icons, apps, playlists and content on its wide 12.3" touchscreen display.<sup>6</sup> A wireless charging pad ensures your compatible smartphone stays charged as you power through the day.<sup>7</sup>



Remote access with Amazon Echo



Apple CarPlay



Wireless device charging

<sup>1</sup> Blue Link Connected Care, Remote and Guidance packages are complimentary for the first 3 years of ownership and require an active Blue Link subscription agreement subject to the Connected Services Terms and Conditions. Three-year term starts from the new vehicle date-of-first-use, is available for new vehicle purchases and leases, and is transferable to subsequent owners subject to the Terms and Conditions. Only use Blue Link and corresponding devices when safe to do so. Cellular and GPS coverage is required. Features, specifications and fees are subject to change. For more on details and limitations, visit HyundaiUSA.com or your authorized Hyundai dealer. <sup>2</sup> Blue Link agents will contact existing emergency service responders. <sup>3</sup> Requires active Blue Link subscription and Remote package. <sup>4</sup> Amazon, Alexa and all related logos and motion marks are trademarks of Amazon.com, Inc. or its affiliates. Google Assistant and Google Home are trademarks of Google Inc. <sup>5</sup> Requires active Blue Link subscription and Guidance package. <sup>6</sup> Apple CarPlay works with iPhone 5s, iPhone 5c, iPhone 5 and later models running the latest version of iOS 7 and above. Apple is a registered trademark of Apple Inc. Android Auto works with smartphones running on Android 5.0 Lollipop and higher. Android, Android Auto, Google Play and other marks are trademarks of Google Inc. <sup>7</sup> Qi wireless charging function is based on smartphone compatibility and/or specific accessory cases.



**Automatic Emergency Assistance**  
Blue Link Connected Care offers 24/7 SOS Emergency Assistance and Automatic Collision Notification that calls for help if you're in an accident where airbags deploy.



**On-Demand Diagnostics**  
Run vehicle diagnostics from your Hyundai's touchscreen, report issues at the press of a button and receive Monthly Vehicle Health Reports or maintenance reminders by email.



**Destination Send-to-Car**  
Use your smartphone to find restaurants or points of interest that may not be updated yet on your vehicle's maps, then send the destination to NEXO's navigation system.



**Service Link**  
Conveniently schedule your vehicle for service from the driver seat of your NEXO or your MyHyundai smartphone app.



**Car Finder**  
Our Car Finder smartphone app feature lets you navigate your way through crowded parking lots back to your NEXO.



**Remote Controls**  
Use your smartphone, home assistant or wearable device to remotely start your NEXO's engine, unlock the doors, set the cabin temperature and more.

## Wheels



Blue  
17" Alloy Wheel



Limited  
19" Alloy Wheel

## NEXO Blue



hp **161**  
lb-ft **291**

### Hydrogen Fuel Cell

#### Popular Features

- Forward Collision-Avoidance Assist with Pedestrian Detection
- Blind-Spot Collision-Avoidance Assist
- Rear Cross-Traffic Collision-Avoidance Assist
- 12.3" LCD touchscreen navigation
- Apple CarPlay<sup>®</sup> and Android Auto<sup>™</sup>
- Wireless device charging

## NEXO Limited



hp **161**  
lb-ft **291**

### Hydrogen Fuel Cell

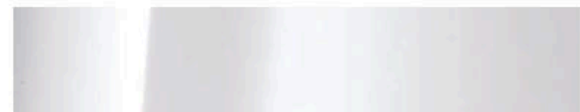
#### Popular Features

- Power tilt-and-slide wide sunroof
- Remote Smart Parking Assist
- Surround View Monitor
- Blind-Spot View Monitor
- Krell<sup>®</sup> Premium Audio system with 8 speakers and Live Dynamic sound algorithm technology
- Hands-free smart liftgate with auto open

## Interior / Exterior Colors



Stone Gray Bio-Based Leatherette



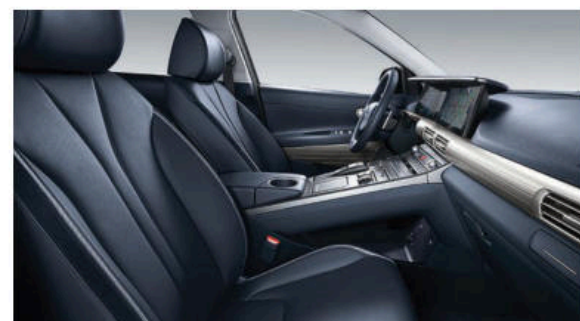
White Pearl



Copper Metallic



Dusk Blue



Meteor Blue Bio-Based Leatherette



Cocoon Silver

## NEXO

	Blue	Limited
<b>Power &amp; Handling</b>		
Zero-emission hydrogen fuel cell powertrain	•	•
95 kW fuel cell and 40 kW (1.56 kWh) lithium-ion polymer battery	•	•
120 kW (161 hp) permanent magnet electric motor with 291 lb-ft torque	•	•
14.0 lbs hydrogen tank capacity	•	•
Single-speed automatic transmission	•	•
Shift-by-Wire push-button drive selector	•	•
Front Wheel Drive	•	•
Multi-link rear suspension	•	•
Regenerative brake level control paddles	•	•

### Exterior Features

LED headlights/taillights and Daytime Running Lights	•	•
Power-folding, heated side mirrors with LED turn signal indicators	•	•
Bodycolor flush auto-retracting door handles	•	•
Automatic on/off headlights	•	•
Rear spoiler with hidden rear window wiper	•	•
Power tilt-and-slide wide sunroof	-	•
Roof side rails	-	•
Solar control front glass and privacy rear glass	•	•
Rain-sensing windshield wipers	-	•
Hands-free smart liftgate with auto open	-	•

### Interior Features

Proximity Key entry with push button start	•	•
7" LCD multi-information display	•	•
Tilt-and-telescopic steering wheel with audio, Bluetooth <sup>®</sup> phone and cruise controls	•	•
Dual automatic temperature control	•	•
Floor console-mounted rear vents	•	•
Remote Smart Parking Assist	-	•
Electronic Parking Brake with Automatic Vehicle Hold	•	•
Leather-wrapped steering wheel	•	•
Bio-based leatherette seating	•	•
8-way power driver seat with power lumbar support	•	•
6-way power front passenger seat	•	•
Heated front seats	•	•
Ventilated front seats	-	•
Heated steering wheel	-	•
60/40 split-folding rear seats with adjustable head restraints	•	•
Rear-seat center armrest with dual cupholders	•	•
Power windows with front auto-down/up	•	•
Auto-dimming rearview mirror with HomeLink <sup>®</sup>	•	•
Smart Cruise Control with Stop & Go	•	•
Surround View Monitor	-	•
Cargo cover	•	•

## NEXO

	Blue	Limited
<b>Advanced Safety</b>		
Forward Collision-Avoidance Assist w/ Pedestrian Detection	•	•
Blind-Spot Collision-Avoidance Assist	•	•
Rear Cross-Traffic Collision-Avoidance Assist	•	•
Rear View Monitor with Parking Guidance	•	•
Parking Distance Warning - Front and Rear	•	•
Lane Following Assist	•	•
Blind-Spot View Monitor	-	•
Driver Attention Warning	•	•
High Beam Assist	•	•

### Audio & Connected Car Technology

12.3" high-resolution color touchscreen navigation	•	•
Krell <sup>®</sup> Premium Audio system with 8 speakers and Live Dynamic sound algorithm technology	-	•
Android Auto <sup>™</sup> and Apple CarPlay <sup>®</sup>	•	•
SiriusXM Satellite Radio and HD Radio <sup>™</sup>	•	•
Blue Link <sup>®</sup> Connected Car System (3 years complimentary)	•	•
Wireless device charging	•	•
Dual front USB charge ports	•	•

• Standard - Not Available

### Exterior & Interior Dimensions

	NEXO
Wheelbase	109.8 in
Overall Length	183.9 in
Overall Width	73.2 in
Overall Height (with roof side rails)	64.2 (64.6) in
Headroom, front (with sunroof) / rear	39.4 (38.0) / 38.0 in
Legroom, front / rear	41.5 / 38.6 in
Shoulder Room, front / rear	57.2 / 55.5 in
Total Interior Volume	130.9 cu ft
Passenger Interior Volume	101.3 cu ft
Cargo Capacity, rear seats up / folded down	29.6 / 56.5 cu ft

### EPA MPGe Estimates (City/Highway/Combined)

#### NEXO Blue

65/58/61   380  
Estimated Driving Range (miles)

#### NEXO Limited

59/54/57   354  
Estimated Driving Range (miles)

MPGe is the EPA-equivalent of gasoline fuel efficiency for electric mode operation. Use for comparison purposes only. Mileage may vary depending on driving conditions, driving habits, vehicle condition, the age/condition of the lithium-ion polymer battery and other factors.



Hyundai Hope On Wheels®

Helping Kids Fight Cancer Since 1998



## Hope makes every Hyundai better.

Each time we sell a Hyundai, a portion goes to Hyundai Hope On Wheels® to help find a cure for childhood cancer. Over the last 22 years, Hyundai Hope On Wheels has donated more than \$172 million. Hope is our greatest feature. And it comes standard on every Hyundai. For more information, please visit [HyundaiHopeOnWheels.org](http://HyundaiHopeOnWheels.org).



## America's Best Warranty

 **HYUNDAI**  
**Assurance**

[HYUNDAIASSURANCE.COM](http://HYUNDAIASSURANCE.COM)

Our commitment to Hyundai owners doesn't end with the transfer of keys. Wherever the road takes you, we've got your back with Hyundai Assurance, an umbrella of services and benefits that includes America's Best Warranty, 24/7 Roadside Assistance, innovative safety and car care features...and more.

**POWERTRAIN  
LIMITED WARRANTY**

**10** YEARS  
100,000 MILES

**NEW VEHICLE  
LIMITED WARRANTY**

**5** YEARS  
60,000 MILES

**ANTI-PERFORATION  
WARRANTY**

**7** YEARS  
UNLIMITED MILES

**24/7 ROADSIDE  
ASSISTANCE**

**5** YEARS  
UNLIMITED MILES

**Ask your Hyundai dealer  
about these NEXO benefits:**

- 3 years/\$15,000 of complimentary fuel<sup>1</sup>
- Free vehicle rentals<sup>2</sup>

See dealer for LIMITED WARRANTY details. Fuel economy estimated by EPA for comparison only. Mileage may vary. While the information contained in this brochure was correct at the time of printing, specifications and equipment can change. Feature comparisons based on competitor information available at the time of printing. No warranty or guarantee is being extended in this brochure, and Hyundai reserves the right to change product specifications or equipment at any time without incurring obligations. Some vehicles shown with optional equipment. Specifications apply to U.S. vehicles only. Please contact your Hyundai dealer for current vehicle specifications. As part of Hyundai's commitment to a responsible environment, this brochure was printed using paper certified by the Forest Stewardship Council®. FSC® certification helps ensure that the highest social and environmental standards are met in the making of the paper we use, contributing to conservation, responsible management and community-level benefits for people near the forests. <sup>1</sup>Purchasers or lessees of a new Hyundai NEXO can receive hydrogen fueling cards with a combined maximum value of \$15,000 to be used during the first 3 years of ownership or lease. Debit card terms and conditions apply. NEXO card is non-transferable and will only function at certified retail hydrogen fueling stations in California. See participating Hyundai dealer or [HyundaiUSA.com](http://HyundaiUSA.com) for details. <sup>2</sup>Purchasers or lessees of a new Hyundai NEXO will receive a non-transferable 21-day car rental voucher from Enterprise Rent-A-Car valid for 3 years from the date of vehicle purchase or lease subject to Enterprise's terms and conditions. See participating Hyundai dealer or [HyundaiUSA.com](http://HyundaiUSA.com) for details.

