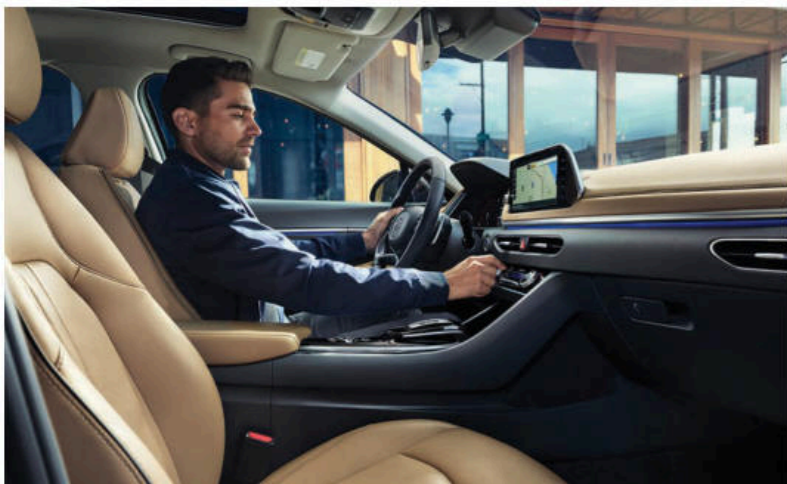


2020 Hyundai

# SONATA





## Welcome to Sensuous Sportiness.

At Hyundai, we're motivated by the same thing you are – being better. For 2020, better begins with the all-new Hyundai Sonata, whose lower profile and wider stance offers a Sensuous Sportiness design usually reserved for sport coupes.

Every detail and angle is dripping with artistry. Sonata's low hood extends to the edge of the car with no harsh cutline. At the rear, ultra-wide taillights boldly emphasize its ground-hugging stance. Unbroken strips of chrome lasso the side windows and extend up the length of the hood, tapering into a dynamic LED running light signature unlike anything else on the road.

Inside, the 2020 Sonata is fully transformed as well – packed with personalization options and innovations that raise the bar for midsize sedan comfort, convenience and safety. Digital temperature readouts on the climate control panel's stylish metal knobs convey a decidedly upscale feel. The available personalization technologies include a first-in-class 12.3" digital instrument cluster,<sup>1</sup> which is customizable to suit different driving modes and preferences.

The new Sonata is also the first car in its class to offer a digital key.<sup>2</sup> With it, your compatible Android™ smartphone unlocks the front doors and starts the engine. Multiple drivers can be assigned a digital key that retrieves their personalized radio presets, instrument cluster display preferences and side mirror/driver seat settings from the Hyundai Blue Link® cloud.

The fit and finish of high-quality materials throughout the cabin delight your senses, while a collaboration with Bose® puts every occupant in the center of a truly phenomenal 12-speaker audio experience. An available Centerpoint® surround-sound system uses proprietary algorithms to analyze the stereo signal and convert it into multiple channels, creating stereophonic effects similar to sitting in a concert hall audience. Or being directly onstage. If all of this sounds good, read on. There's more to Sonata than meets the eye – and ear.



Hyundai has ranked #1 in customer loyalty for the 10th year in a row<sup>3</sup>



Hyundai is among the Top 3 Brands in the J.D. Power 2019 U.S. Initial Quality Study 2 Years in a Row<sup>4</sup>



<sup>1</sup>Claim based on comparison of specifications on manufacturer websites. <sup>2</sup>Claim based on comparison of specifications on manufacturer websites. Hyundai Near Field Communication Digital Key requires compatible Android smartphone and appropriately equipped 2020 Hyundai Sonata. Not all Android devices are compatible. Sonata vehicle must be equipped with smart key with push button start, wireless device charging, and Audio Video Navigation System 5.0 (or newer) or Display Audio 2.0. Lock/unlock functionality works on front doors only. Features and specifications subject to change. See your Owner's Manual or visit your local Hyundai dealer for details. <sup>3</sup>Based on 2010, 2011, 2012, 2013, 2014, 2015, 2016, 2017, 2018 and 2019 Brand Keys Customer Loyalty Engagement Index\*. <sup>4</sup>Hyundai is among the Top 3 Brands in the J.D. Power 2019 U.S. Initial Quality Study of new vehicle owners' experience with their own vehicle after 90 days of ownership. Visit [jdpower.com/awards](http://jdpower.com/awards).



<sup>1</sup> Claim based on comparison of specifications on manufacturer websites. <sup>2</sup> Apple CarPlay works with iPhone 5s, iPhone 5c, iPhone 5 and later models running the latest version of iOS 7 and above. Apple is a registered trademark of Apple Inc. Android Auto works with smartphones running on Android 5.0 Lollipop and higher. Android, Android Auto, Google Play and other marks are trademarks of Google Inc. <sup>3</sup> Requires active Blue Link subscription with Remote package. Not available on Sonata SE.

SONATA Limited in Dark Gray / Camel Leather

## Your room is ready.

Your next new car should reflect your individual taste and personal preferences. It starts with the one thing you prefer above all – room. The new Sonata couples best-in-class front headroom and legroom<sup>1</sup> with comfortable and accessible rear seating. Step inside, and you'll immediately sense the spaciousness. The interior feels light and airy, with a sleek design inspired by stealth aircraft.

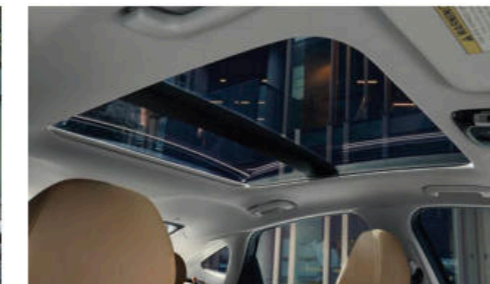
The artistry of Sonata's cabin is seen – and felt – in the design of climate controls and electronic gear shift buttons placed exactly where your fingertips expect them to be. The standard 8" display audio system features Apple CarPlay and Android Auto for seamless access to smartphone apps.<sup>2</sup> An available 10.25" multimedia navigation system helps alleviate freeway stress with junction view lane guidance, tilted bird's-eye views and subscription-free traffic updates. Content on the scrollable split-screen can easily be switched to display your preferences.

Ready to experience a new level of personalization? An available Remote Driver Profile Management feature lets you save presets for Sonata's navigation system, radio, side mirrors and seat positioning to the Hyundai Blue Link® cloud, so they can be engaged remotely before you walk out the door.<sup>3</sup> An available 12.3" digital instrument cluster lets you choose what information you'd like displayed in the middle of the gauges, while an available color Heads-up Display allows you to select the vital driving information you want projected onto the windshield in fighter-jet fashion.

Sonata's personalization options extend to the climate system. Three levels of airflow intensity can be selected for the air conditioner's auto mode for improved comfort. A button on your key fob also enables you to start your car's engine and preset the cabin temperature to 72 degrees before you slip behind the wheel.<sup>3</sup> How chill is that?



Hands-free smart trunk release



Panoramic sunroof



Dual automatic temperature controls



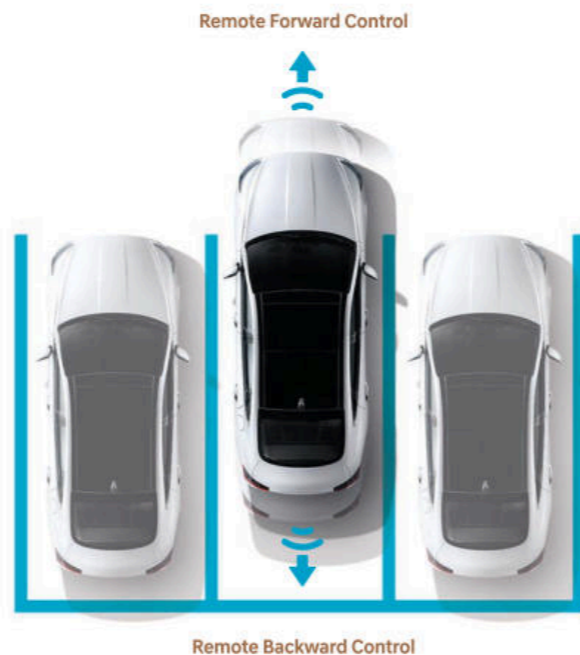
10.25" touchscreen display with Apple CarPlay

# Advancements you can put your finger on. And wrap your hands around.

With this new generation of Sonata, Hyundai engineers have dramatically improved its performance. More nimble and responsive, it has the tightest turning diameter in its class.<sup>1</sup> Two new 4-cylinder Smartstream engines – a 191-hp 2.5L powerplant or 180-hp 1.6L Turbo with 195 lb-ft of torque on tap at a low 1500 rpm – let you choose how you want to roll. Both use a new 8-speed automatic transmission with electronic push-button gear selection. Larger disc brakes deliver added stopping power, while a multi-link rear suspension helps keep you precisely tracking through corners.

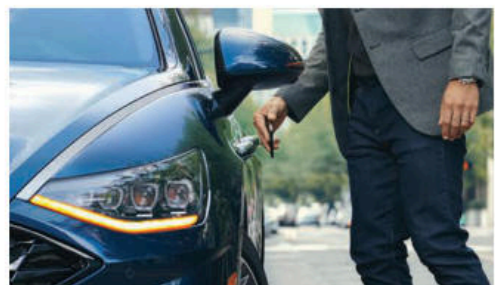
Precisely how you want Sonata to respond is up to you. A Drive Mode Select button lets you adjust Sonata's steering calibration, engine and transmission mapping to optimize fuel efficiency (Eco), dynamic driving (Sport), or performance based on your driving style (Smart) or individual preferences (Custom).

Even before you start the engine, Sonata reveals a new level of responsiveness with an available Hyundai Digital Key that lets you unlock the driver door and start the engine using your Android™ smartphone. The digital key can be shared with multiple drivers, whose driver seat, side mirror, steering wheel and multimedia presets are all activated just by using the key. Doesn't that sound like a sedan you can wrap your mind around?



## Tech That Gets You Out Of Tight Spots

Sonata Limited's new Remote Smart Parking Assist allows you to pull your car into or out of tight parking spaces – without you having to be in the car – via your key fob. Ensuring that, wherever you travel, you're on Easy Street.<sup>2</sup>



Hyundai Digital Key



Electronic push-button gear selection



12.3" instrument cluster display in Sport Mode



Surround View Monitor



<sup>1</sup>Claim based on comparison of specifications on manufacturer websites. <sup>2</sup>Remote Smart Parking Assist can autonomously park the vehicle. However, several factors can reduce the performance of this feature. The parking sensors may not function correctly if one or more of the parking sensors is damaged, dirty or covered, or if weather conditions (heavy rain, snow or fog) are interfering with sensor operation. Always inspect the parking area with your own eyes. See Owner's Manual for details.



# With SmartSense, safety comes full circle.

It wasn't hard to come up with SmartSense as the name for our suite of advanced safety features. On the new Sonata, three radar sensors, four cameras and eight ultrasonic sensors offer protection from nearly every angle. Available features like Rear Cross-Traffic Collision-Avoidance Assist,<sup>1</sup> front and rear parking sensors, and a Surround View Monitor help you safely navigate crowded parking garages.

On the road, technologies ranging from Driver Attention Warning<sup>2</sup> and Lane Keeping Assist<sup>3</sup> to Forward Collision-Avoidance Assist with Pedestrian Detection<sup>4</sup> and available Blind-Spot Collision-Avoidance Assist<sup>5</sup> add watchful eyes along your journey.

Cars equipped with a navigation system include Highway Driving Assist<sup>6</sup>, which uses Lane Following Assist and Smart Cruise Control<sup>7</sup> technologies to help keep you in the center of your lane while maintaining a set speed and safe distance from other vehicles. It even uses GPS data to adjust your speed automatically as speed limits change.

Of course, when it comes to safety, the best defense is a good offense. That's why Hyundai engineers enhanced the structural rigidity, suspension geometry and braking system of Sonata. The result is a sedan with the quick reflexes and handling agility to help you steer clear of trouble in the first place.



Blind-Spot View Monitor

Rear Cross-Traffic Collision-Avoidance Assist

Forward Collision-Avoidance Assist with Pedestrian Detection

## SmartSense Safety Technologies<sup>8</sup>



### There's Safety In Numbers

Given the superlative safety technologies engineered into every Hyundai, it's no surprise that 13 different Hyundai models equipped with front crash prevention and specific headlights have earned an IIHS 2019 Top Safety Pick or Top Safety Pick+ rating – one of the industry's highest safety honors.<sup>9</sup>

<sup>1</sup> Rear Cross-Traffic Collision-Avoidance Assist (RCCA) is designed to notify drivers of approaching cross-traffic behind the vehicle. When another vehicle is detected while your car is backing out of a parking spot, it provides audible and visual display warnings and applies braking if it senses a collision is imminent. RCCA is active when your car is in reverse gear and backing at a speed less than 6 mph. It only engages during the first activation of reverse gear from park and may not detect all vehicles, depending on the size, angle, distance and speed of the other vehicle. Never rely exclusively on RCCA. Always look over your shoulder and use your mirrors to confirm rear clearance. There are limitations to the function, detection, range and clarity of the system. See Owner's Manual for details. <sup>2</sup> It is the driver's responsibility to remain alert at all times. Driver Attention Warning is only a warning to inform the driver of a potential lack of attention or drowsiness. It does not detect and provide an alert in every situation. See Owner's Manual for details. <sup>3</sup> Lane Keeping Assist operates above approximately 44 mph and only when the lane markings are clearly visible on the road. It will not work under all circumstances and will not prevent loss of control. It is a supplemental assist, and does not replace the need for extreme care and attention by the driver. See Owner's Manual for details. <sup>4</sup> Forward Collision-Avoidance Assist (FCA) with Pedestrian Detection helps detect pedestrians, but not in all conditions. FCA is designed to assist drivers to avoid, or reduce the severity of, collisions with cars that have slowed or stopped in front of them. It is a supplemental assist and does not replace the need for extreme care and attention by the driver. FCA may not stop the vehicle completely and will not avoid all collisions. See Owner's Manual for details. <sup>5</sup> Blind-Spot Collision-Avoidance Assist (BCA) warns the driver of other cars in the blind-spot region. If BCA detects an unsafe lane change being attempted, it applies braking on the opposite side of the attempted lane change to help avoid a collision. There are limitations to the function, range, detection and clarity of the system. It will not detect all vehicles or objects in the blind spot and may not operate if sensors are obscured in any way. Do not rely exclusively on BCA. BCA is a supplemental system, and it is the driver's responsibility to exercise caution when changing lanes. See Owner's Manual for details. <sup>6</sup> Highway Driving Assist (HDA) is for highway use only and helps keep your car centered in its lane while maintaining a safe distance from the vehicle ahead. Lane markings must be clearly visible on the road. HDA should not be used in poor weather, heavy or varying traffic, or on winding or slippery roads. HDA will not work under all circumstances and will not prevent loss of control. Driver remains responsible to slow or stop the car to avoid a collision. See Owner's Manual for details. <sup>7</sup> Smart Cruise Control with Stop & Go (SCC) is not a collision-avoidance or warning device. SCC is for highway use only and should not be used in poor weather, heavy or varying traffic, or on winding or slippery roads. The driver remains responsible for slowing or stopping the vehicle to avoid a collision. SCC initiates a full stop when the traffic ahead stops and reengages if the vehicle ahead moves forward within 3 seconds. See Owner's Manual for details. <sup>8</sup> Safety features vary by model. For details, refer to the Features chart in the back of this brochure or visit HyundaiUSA.com. <sup>9</sup> 2019 Top Safety Pick for 2019 Accent, Elantra GT, Ioniq Hybrid, Ioniq Plug-in Hybrid built after July 2018, Veloster built after August 2018, and Santa Fe XL. 2019 Top Safety Pick+ for 2019 Elantra built after September 2018, Tucson built after March 2019, NEXO built after June 2019, Sonata, Kona, Santa Fe and 2020 Palisade.



## Is Sonata a car? Or a computer on wheels?

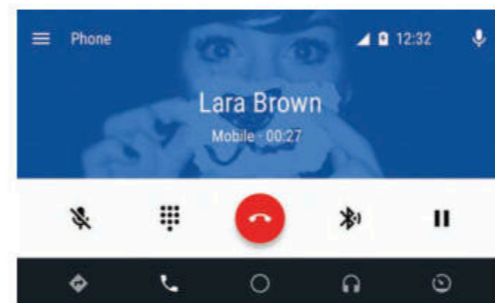
With all of the advanced technologies in the new Sonata, it's a fair question. After all, Hyundai is not just a car manufacturer, but one of the world's leading technology innovators. We're constantly asking how we can make everything about driving and owning a Hyundai better. That means making it a totally seamless – and highly customizable – part of your daily life.

Sonata's available Blue Link® connected car technologies keep you connected to your digital life on the go with safety, convenience and remote features that allow you to interact with your car in powerful, practical ways.<sup>1</sup>

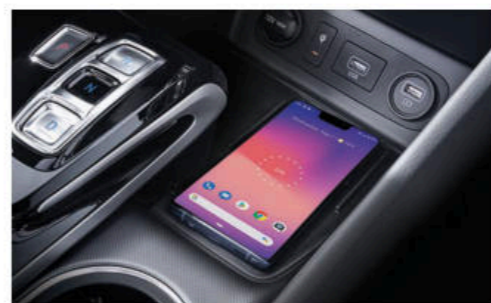
Enhancements to Blue Link's remote features let you go beyond starting your Sonata's engine and climate controls before walking out the door. You can also activate the car's available heated/ventilated seats remotely and adjust the steering wheel/side mirror positions and radio presets by sending your personal profile to the car ahead of time.<sup>2</sup>

Want to remotely check and see if you've left the sunroof open? Sonata's new MyHyundai app lets you check by consulting your smartphone or asking your Amazon Echo® or Google Home™ virtual assistant.<sup>3</sup>

Sonata continues to include standard Apple CarPlay® and Android Auto™ across its entire lineup and, for 2020, allows two phones to be connected simultaneously via Bluetooth® streaming. To keep everyone powered up when you're on the road, Sonata offers available wireless device charging<sup>4</sup> and a rear-seat USB charge port.



Android Auto



Wireless device charging



### Automatic Emergency Assistance

Blue Link Connected Care offers 24/7 SOS Emergency Assistance and Automatic Collision Notification that calls for help if you're in an accident where airbags deploy.<sup>5</sup>



### On-Demand Diagnostics

Run vehicle diagnostics from your Sonata's touchscreen, report issues at the press of a button, and receive Monthly Vehicle Health Reports or maintenance reminders by email.



### Destination Send-to-Car

Use your smartphone to find restaurants or points of interest that may not be updated yet on your vehicle's maps, then send the destination to Sonata's navigation system.<sup>6</sup>



### Service Link

Conveniently schedule your vehicle for service from the driver's seat of your Sonata or your MyHyundai smartphone app.



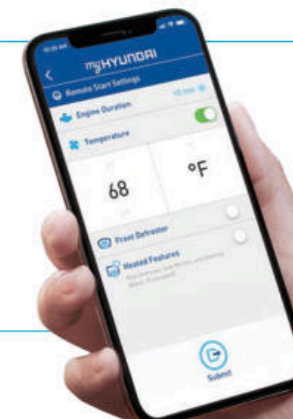
### Car Finder

Our Car Finder smartphone app feature lets you navigate your way through crowded parking lots back to your Hyundai.<sup>7</sup>



### Remote Vehicle Status

Your myHyundai app lets you check the status of your Sonata from just about anywhere. Wondering how much fuel is in your tank? If your car's trunk is closed or the sunroof is open? The app knows the answers to these questions and more.<sup>8</sup>



<sup>1</sup> Not available with Sonata SE. The 2020 Hyundai Sonata includes 3 years of the Blue Link Connected Care, Remote and Guidance (factory-equipped navigation required) packages. All trials require an active Blue Link subscription agreement subject to the Connected Services Terms and Conditions. Three-year term starts from the new vehicle date-of-first-use, is available for new vehicle purchases and leases, and is transferable to subsequent owners subject to the Terms and Conditions. Only use Blue Link and corresponding devices when safe to do so. Cellular and GPS coverage is required. Features, specifications, and fees are subject to change. For more on details and limitations, visit HyundaiUSA.com or your authorized Hyundai dealer. <sup>2</sup> Requires active Blue Link Remote package subscription. <sup>3</sup> Requires Blue Link Remote package. Amazon, Alexa and all related logos and motion marks are trademarks of Amazon.com, Inc. or its affiliates. Google Assistant and Google Home are trademarks of Google Inc. <sup>4</sup> Qi wireless charging function is based on smartphone compatibility and/or specific accessory cases. Not available on Sonata SE. <sup>5</sup> Requires active Blue Link Connected Care package. Blue Link agents will contact existing emergency service responders. <sup>6</sup> Requires active Blue Link Guidance package and vehicle equipped with a navigation system. <sup>7</sup> Smartphone GPS location must be within a 1-mile radius of the vehicle's location to display searched location.

## SONATA SE

Smartstream 2.5L GDI 4-cylinder

hp **191**

lb-ft **181**



### Popular Features

LED headlights, taillights and Daytime Running Lights  
Tilt-and-telescopic steering wheel with cruise control  
Forward Collision-Avoidance Assist with Pedestrian Detection  
Lane Keeping Assist and Lane Following Assist  
Apple CarPlay® and Android Auto™

### EPA MPG Estimates

City/Highway/Combined¹

**28/38/32**

Smartstream 8-speed automatic transmission with SHIFTRONIC®

## SONATA SEL

Smartstream 2.5L GDI 4-cylinder

hp **191**

lb-ft **181**



### Popular Features

Proximity Key entry with push button start  
Blue Link® Connected Car System (3 years complimentary)  
Dual automatic temperature control  
Hands-free smart trunk with auto open  
Blind-Spot Collision-Avoidance Assist  
Rear Cross-Traffic Collision-Avoidance Assist

### EPA MPG Estimates

City/Highway/Combined¹

**27/37/31**

Smartstream 8-speed automatic transmission with SHIFTRONIC®

### Convenience Package

12.3" digital instrument cluster display  
Hyundai Digital Key  
Wireless device charging  
Auto-dimming rearview mirror with HomeLink®

Leather-wrapped steering wheel  
Floor console-mounted rear vents  
Rear-seat USB charge port

### Premium Package

Bose® 12-speaker premium audio system

Leather seating surfaces and heated steering wheel

## SONATA SEL Plus

Smartstream 1.6T GDI 4-cylinder

hp **180**

lb-ft **195**



### Popular Features

Wireless device charging  
Hyundai Digital Key  
12.3" digital instrument cluster display  
Auto-dimming rearview mirror with HomeLink®  
Steering wheel paddle shifters and aluminum pedals  
Dinamica® suede and leatherette combination seating surfaces

### EPA MPG Estimates

City/Highway/Combined¹

**27/36/31**

Smartstream 8-speed automatic transmission with SHIFTRONIC®

### Tech Package

Power tilt-and-slide panoramic sunroof  
LED interior lighting  
10.25" touchscreen navigation system  
Bose® 12-speaker premium audio system  
Highway Driving Assist

## SONATA Limited

Smartstream 1.6T GDI 4-cylinder

hp **180**

lb-ft **195**



### Popular Features

Ventilated front seats  
Full color Heads-up Display  
Remote Smart Parking Assist  
Blind-Spot View Monitor and Surround View Monitor  
Parking Collision-Avoidance Assist – Rear

### EPA MPG Estimates

City/Highway/Combined¹

**27/36/31**

Smartstream 8-speed automatic transmission with SHIFTRONIC®

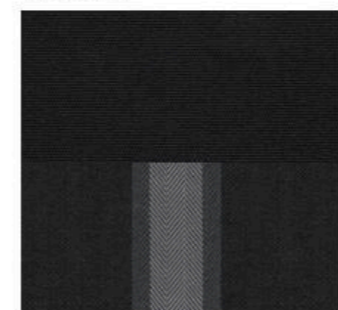
¹EPA estimates for comparison only. Your actual mileage may vary with options, driving conditions, driving habits and the vehicle's condition.

**“When viewed in person, the Sonata reveals itself as a monumental achievement of proportion and linework. The look is striking yet very sophisticated.” – MotorTrend**

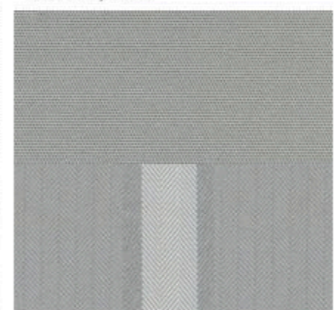
## Interior Colors

SE | SEL

Black Cloth



Dark Gray Cloth

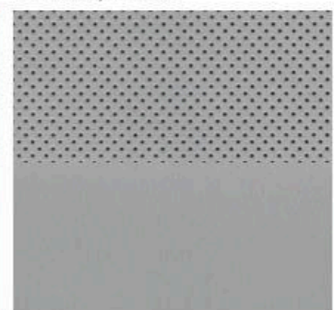


SEL with Premium Package | Limited

Dark Gray/Camel Leather



Dark Gray Leather

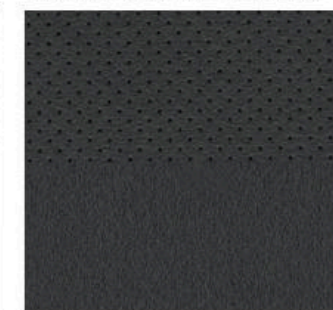


Black Leather



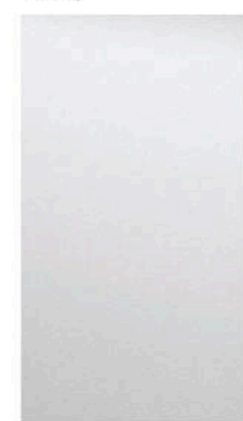
SEL Plus

Black Leatherette/Dinamica® Suede



## Exterior Colors

Quartz White



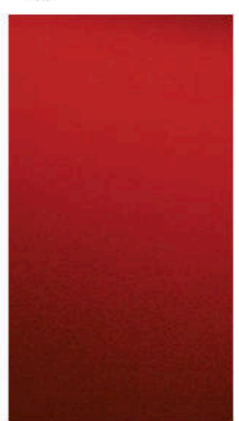
Phantom Black



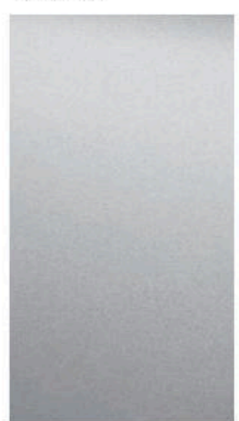
Hampton Gray



Calypso Red



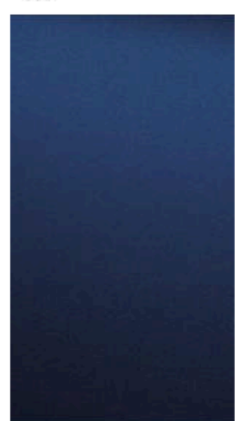
Shimmering Silver Pearl



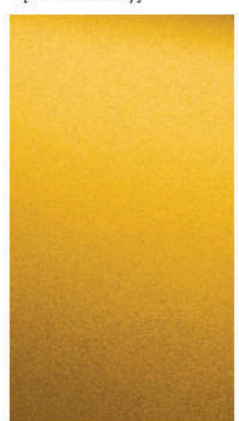
Portofino Gray



Stormy Sea



Glowing Yellow [SEL Plus only]



## Wheels

SE  
16" Alloy Wheel



SEL  
17" Alloy Wheel



SEL Plus  
18" Alloy Wheel



Limited  
18" Alloy Wheel



SONATA	SE	SEL	SEL Plus	Limited
<b>Power &amp; Handling</b>				
191 hp/181 lb-ft, Smartstream 2.5L GDI 4-cylinder engine	●	●	—	—
180 hp/195 lb-ft, Smartstream 1.6L Turbo GDI 4-cylinder engine	—	—	●	●
8-speed automatic transmission with SHIFTRONIC®	●	●	●	●
Steering wheel paddle shifters	—	—	●	●
Shift-by-Wire electronic push-button gear selection	●	●	●	●
Electronic Parking Brake with Automatic Vehicle Hold	●	●	●	●
Idle Stop & Go	●	—	—	—
Drive Mode Select	●	●	●	●
<b>Exterior Features</b>				
Sport front and rear fascia	—	●	●	●
Sport single twin-tipped exhaust	—	●	●	●
Hidden LED Daytime Running Lights	●	●	●	●
Automatic headlights	●	●	●	●
LED headlights	●	●	●	—
Matrix-type LED headlights	—	—	—	●
LED taillights	●	●	●	●
Solar control windows	●	●	●	●
Glossy black side mirrors	—	—	●	—
Heated side mirrors with LED turn signal indicators	—	●	●	●
Power tilt-and-slide panoramic sunroof	—	○	●	●
Hands-free smart trunk with auto open	—	●	●	●
Rain-sensing windshield wipers	—	—	—	●
<b>Interior Features</b>				
Proximity Key entry with push button start	—	●	●	●
3.5" LCD multi-information display	●	—	—	—
4.2" color LCD multi-information display	—	●	—	—
12.3" digital instrument cluster display with selectable viewing modes	—	●	●	●
Full color Heads-up Display	—	—	—	●
Leather-wrapped steering wheel	—	●	●	●
Liquid chrome interior accents	—	●	●	●
Tilt-and-telescopic steering wheel with cruise controls	●	●	●	●
Dual automatic temperature control	—	●	●	●
8-way power driver seat with adjustable lumbar support	—	●	●	●
4-way power front passenger seat	—	—	—	●
Integrated Memory System for driver seat and side mirrors	—	—	—	●
Leather seating surfaces and heated steering wheel	—	●	—	●
Dinamica® suede and leatherette combination seating surfaces	—	—	●	—
Heated front seats	—	●	●	●
Center rear armrest with dual cupholders	—	●	●	●
60/40 split-folding rear seats	●	●	●	●
Ventilated front seats	—	—	—	●
LED interior lighting	—	○	●	●
Ambient LED interior lighting (adjustable - 64 colors)	—	—	—	●

SONATA	SE	SEL	SEL Plus	Limited
<b>Interior Features</b>				
Aluminum pedals	—	—	●	—
Power windows with front auto-down/up (driver/passenger)	●/—	●/●	●/●	●/●
Auto-dimming rearview mirror with HomeLink®	—	●	●	●
Wireless device charging	—	●	●	●
Blind-Spot View Monitor and Surround View Monitor	—	—	—	●
Remote Smart Parking Assist	—	—	—	●
Rearview camera with dynamic guidelines	●	●	●	●
<b>SmartSense Advanced Safety</b>				
Forward Collision-Avoidance Assist with Pedestrian Detection	●	●	●	●
Lane Keeping Assist and Lane Following Assist	●	●	●	●
Driver Attention Warning	●	●	●	●
High Beam Assist	●	●	●	●
Rear Occupant Alert	●	●	●	●
Blind-Spot Collision-Avoidance Assist	—	●	●	●
Rear Cross-Traffic Collision-Avoidance Assist	—	●	●	●
Highway Driving Assist	—	—	●	●
Parking Collision-Avoidance Assist - Rear	—	—	—	●
Front and rear parking sensors	—	—	—	●
Smart Cruise Control with Stop & Go	●	●	●	●
<b>Audio &amp; Connected Car Technology</b>				
8" high-resolution touchscreen display audio with AM/FM/MP3 and 6 speakers	●	●	●	—
10.25" high-resolution touchscreen navigation system	—	—	●	●
Bose® 12-speaker premium audio system	—	●	●	●
SiriusXM Satellite Radio	—	●	●	●
HD Radio® technology	●	●	●	●
Bluetooth® hands-free phone system	●	●	●	●
Apple CarPlay® and Android Auto™	●	●	●	●
Blue Link® Connected Car System (3 years complimentary)	—	●	●	●
Hyundai Digital Key	—	●	●	●
Rear-seat USB charge port	—	●	●	●

● Standard ○ Optional ● Convenience Package  
● Tech Package ● Premium Package — Not Available

Exterior / Interior Dimensions	
Wheelbase	111.8 in
Overall Length	192.9 in
Overall Width (excludes mirrors)	73.2 in
Overall Height	56.9 in
Headroom, front / rear	40.0 / 38.4 in
Legroom, front / rear	46.1 / 34.8 in
Shoulder Room, front / rear	57.9 / 56.1 in
Total Interior Volume	120.4 cu ft

**America's Best Warranty**

<b>POWERTRAIN LIMITED WARRANTY</b>	<b>NEW VEHICLE LIMITED WARRANTY</b>	<b>ANTI-PERFORATION WARRANTY</b>	<b>24/7 ROADSIDE ASSISTANCE</b>
<b>10 YEARS</b>	<b>5 YEARS</b>	<b>7 YEARS</b>	<b>5 YEARS</b>
<b>100,000 MILES</b>	<b>60,000 MILES</b>	<b>UNLIMITED MILES</b>	<b>UNLIMITED MILES</b>

See your authorized Hyundai dealer for LIMITED WARRANTY details.



Hyundai Hope On Wheels®

Helping Kids Fight Cancer Since 1998



## Hope makes every Hyundai better.

Each time we sell a Hyundai, a portion goes to Hyundai Hope On Wheels® to help find a cure for childhood cancer. Over the last 21 years, Hyundai Hope On Wheels has donated more than \$160 million. Hope is our greatest feature. And it comes standard on every Hyundai. For more information, please visit [HyundaiHopeOnWheels.org](http://HyundaiHopeOnWheels.org).



 **HYUNDAI**  
**Assurance**

[HYUNDAIASSURANCE.COM](http://HYUNDAIASSURANCE.COM)

Our commitment to Hyundai owners doesn't end with the transfer of keys. Wherever the road takes you, we've got your back with Hyundai Assurance, an umbrella of services and benefits that includes America's Best Warranty, 24/7 Roadside Assistance, innovative safety and car care features...and more.

Fuel economy estimated by EPA for comparison only. Mileage may vary. While the information contained in this brochure was correct at the time of printing, specifications and equipment can change. Feature comparisons based on competitor information available at the time of printing. No warranty or guarantee is being extended in this brochure, and Hyundai reserves the right to change product specifications and equipment at any time without incurring obligations. Some vehicles are shown with optional equipment. Specifications apply to U.S. vehicles only. Please contact your Hyundai dealer for current vehicle specifications. As part of Hyundai's commitment to a responsible environment, this brochure was printed using paper certified by the Forest Stewardship Council®. FSC® certification helps ensure that the highest social and environmental standards are met in the making of the paper we use, contributing to conservation, responsible management and community-level benefits for people near the forests.



©2019 HYUNDAI NP020F2020