

# TUCSON

2016 HYUNDAI



2016 HYUNDAI TUCSON

---

# THIS IS HOW NEW GETS TO BE IMPROVED.

**T**o appreciate how Hyundai made the all-new Tucson your perfect partner for life's adventures, open a door. No matter which 2016 Tucson you choose – SE, Eco, Sport or Limited – just pull the handle. That smooth feeling and solid sound is the result of meticulously analyzing the acoustic signature of the door latches.

We brought that same level of scrutiny to everything you want from a premium Crossover Utility Vehicle. Want a quieter interior, so your weekend getaways are truly relaxing? On Tucson's new exterior, precise curvature of the windshield pillars cuts wind noise in the cabin to practically nil. Want everyone in your road crew to enjoy the trip? Tucson's new interior feels wider and more spacious with available ventilated front seats and heated rear seats.

How about a more seamless connection between what's on your phone and what's in your Tucson? It's simple, thanks to available technologies like Siri Eyes Free integration and apps like Pandora,<sup>®</sup> SoundHound and Yelp.<sup>1</sup> Want cargo capacity that's easy to access? We gave Tucson the segment's first fully automatic smart liftgate that opens without requiring any kind of physical motion on your part.

And we're certain you'll want this: A CUV so concerned for your safety, it's able to help keep you in your lane, warn you when vehicles are in your blind spot, and automatically brake in an emergency. One thing we haven't changed? Our warranty. It's still America's Best.

<sup>1</sup> Siri is available on Apple® iPhone 4s or later, iPad with Retina display, iPad mini, and iPod touch (5th generation) and requires Internet access. Siri may not be available in all areas, and features may vary by area. Cellular data charges may apply. Apple, Siri, iPhone, iPad and iPod are registered trademarks of Apple Inc.





TUCSON LIMITED Ultimate Package in Chromium Silver

## PERFORMANCE ENGINEERING

# WE CALL IT PRECISION ENGINEERING. YOU'LL CALL IT INSTANT GRATIFICATION.

You can quantify Tucson's engineering refinements countless ways. We made its body structure stiffer to give you a ride that's quieter and smoother. New suspension and steering systems give you handling that's more precise. Even Tucson's available All Wheel Drive system has been improved – it now uses Active Cornering Control for more lateral stability when cornering.

The 2016 Tucson features two engine options that provide improved drivability and significantly enhanced fuel efficiency. The Tucson SE is powered by a 164-horsepower, 2.0L direct-injected 4-cylinder engine. An updated 6-speed automatic transmission with SHIFTRONIC® manual shifting helps it achieve an EPA-estimated 31 MPG highway rating.<sup>1</sup> Our new 175-horsepower, 1.6L turbo engine (standard on Tucson Eco, Sport and Limited models) is even more powerful and fuel efficient, thanks in part to a new, segment-first 7-speed EcoShift® Dual Clutch Transmission.

It's our way of ensuring the all-new Tucson performs the way you like it. With torque-rich power that helps you pull out and pass effortlessly. With agile maneuverability and sure-footed traction, whether the obstacle is a crowded parking lot or a snow-covered mountain road. And with a level of fuel efficiency you'll appreciate every time you pass a gas station.

<sup>1</sup> EPA estimates for comparison only. Your actual mileage will vary with options, driving conditions, driving habits and the vehicle's condition.



**NEW TURBOCHARGED ENGINE** Standard in Eco, Sport and Limited models is a new 1.6L GDI 4-cylinder turbocharged engine. Its advanced design uses Gasoline Direct Injection to make the most of every drop of fuel. A new, lighter and more compact turbine means the engine's 175 horsepower and 195 lb-ft of torque respond quickly. It's frugal, too: Tucson Eco delivers an EPA-estimated 33 MPG on the highway.<sup>1</sup>



**7-SPEED ECOSHIFT® DUAL CLUTCH TRANSMISSION** One key reason why the all-new Tucson is both powerful and fuel-efficient is its new transmission. In a segment first, Tucson is available with a 7-speed automatic Dual Clutch Transmission designed to make the most of our 1.6L turbo engine.



**ACTIVE CORNERING CONTROL AWD** Tucson's available All Wheel Drive system helps improve cornering stability. Active Cornering Control transfers power to the front and rear wheels (and side-to-side to each wheel). Lots of snow where you live? A 50/50 split-locking differential helps you through the white stuff.



**19" ALLOY WHEELS** The largest alloys ever offered on Tucson feature a dynamic asymmetrical spoke design that delivers more than a large dose of style. Their lightweight aluminum alloy construction means the wheels are part of the reason why Tucson handles with such great agility.



TUCSON LIMITED Ultimate Package in Black Leather

## LUXURY AND TECHNOLOGY

# REFINE THE LITTLE THINGS, AND THE DIFFERENCE IS HUGE.

Making Tucson a better Crossover meant making it longer and wider in all the right places. Cargo capacity has been increased to 31.0 cubic feet – a full 5 cubic feet more than our previous model. For greater cargo flexibility, the rear liftgate opening is larger in every dimension. A new dual-level rear cargo floor adds more impressive cargo-carrying utility.

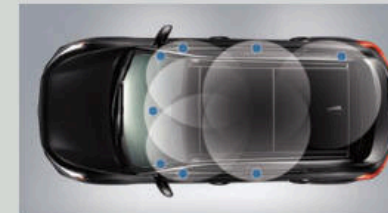
The 60/40 rear seatbacks facilitate any number of passenger and cargo combinations. The sense of spaciousness you'll enjoy inside is enhanced by an expansive instrument panel and an available full-length panoramic sunroof. The sense of comfort? That's aided by the available ventilated front seats, a luxurious feature that's a first for any CUV in the segment. A stitched, soft-touch pad cushions the driver's right knee, perfect for long commutes. You'll feel the refinement of premium, soft-to-the-touch materials throughout the Tucson's redesigned interior.

The technology refinements onboard are equally rewarding. A new 8" touchscreen on a navigation-equipped Tucson features split-screen functionality that displays maps and audio screens simultaneously. Apps like Pandora Internet Radio, SoundHound and Yelp are built into the center console, while available Siri Eyes Free offers Apple iPhone users the latest in smartphone integration using voice commands.

<sup>1</sup>All SiriusXM services require a subscription, sold separately by SiriusXM after a 3-month trial subscription. Fees and taxes apply. All fees and programming are subject to change. To cancel, please call 1-866-635-2349. See our Customer Agreement for complete terms at [siriusxm.com](http://siriusxm.com). Sirius, XM and all related marks and logos are trademarks of Sirius XM Radio Inc.



**NAVIGATE THE FUTURE** The all-new Tucson comes standard with a 5" color touchscreen audio system and integrated rearview camera. Opt for the available navigation system, and an 8" touchscreen displays more than just detailed maps. It's optimized for apps like Yelp, which helps find shopping or restaurants complete with ratings and reviews. Choose from Yelp's listings, and the nav system provides direction without requiring you to input the address.



**405-WATT, 8-SPEAKER PREMIUM AUDIO** Streaming your phone's playlist through the available AM/FM/SiriusXM®/MP3 premium audio system will bring music to your ears. Also available is the latest generation of SiriusXM Travel Link® with up-to-the-minute traffic, sports, weather, stock reports, fuel prices and movie listings.<sup>1</sup>



**VENTILATED AND HEATED FRONT SEATS** Drawing inspiration from its luxury siblings, the Tucson Sport and Limited's front seats are heated. The Limited's front seats are also available with cooling ventilation, and the rear seats can be heated as well. So whether it's a summer vacation or a winter ski trip, Tucson's seats put you in the lap of luxury.



**HANDS-FREE SMART LIFTGATE** Stand within 3 feet from the rear liftgate of your Tucson for 3 seconds with the key fob in your pocket or purse, and it opens automatically. No need to wave your foot under the bumper. The liftgate also features a convenient height-adjustable setting.



<sup>1</sup> Available on Tucson Limited. Automatic Emergency Braking (AEB) is designed to detect vehicles whose taillights are directly in front of the Tucson. AEB initiates full braking at speeds between 5 and 50 mph. AEB is not a substitute for safe driving. See Owner's Manual for details and limitations.  
<sup>2</sup> Available on Tucson Limited. Lane Departure Warning operates above approximately 44 mph and only when the lane markings are clearly visible on the road. It will not prevent loss of control. Refer to your Owner's Manual for more information. <sup>3</sup> Standard on Tucson Sport and Limited. Do not rely completely on Blind Spot Detection (BSD) and be sure to use proper lane changing procedures. BSD may not detect every object or vehicle and will not prevent accidents. Blind Spot Detection and Lane Change Assist may not operate if sensors are obscured in any way. See Owner's Manual for further product details and limitations. <sup>4</sup> Standard on Tucson Sport and Limited. Never rely exclusively on the Rear Cross-traffic Alert. Always look over your shoulder and use your mirrors to confirm rear clearance. There are limitations to the function, detection, range and clarity of the system. VEHICLE MUST BE IN REVERSE AND HAS TO BE GOING 6 MPH OR LESS. To learn more, see Owner's Manual. <sup>5</sup> Available on Tucson Limited. <sup>6</sup> Blue Link subscription service agreement required. Features vary by subscription plan. Blue Link service works using CDMA-based cellular networks in the 50 United States. Blue Link service is not available where there is no cellular coverage, particularly in enclosed or remote areas. Service availability may be affected by signal strength, foliage, weather, topographical conditions (mountains) and nearby structures (tall buildings, tunnels) and other factors. Remote start is only available for push-button start vehicles with an automatic transmission or Dual Clutch Transmission. Not available on all models. For details and system limitations, visit [HyundaiBlueLink.com](http://HyundaiBlueLink.com).

TUCSON LIMITED Ultimate Package in Chromium Silver

## ADVANCED SAFETY

# OUR LATEST THINKING ON HOW TO PREVENT THE UNTHINKABLE.

You can see some of the all-new Tucson's emphasis on safety innovation just by turning on the headlights. Tucson Limited's new LED headlights and LED Daytime Running Lights – or available High Intensity Discharge headlights with Dynamic Bending Light – enhance both safety and styling.

But it's the features you can't see quite as easily – like more than half the 2016 Tucson's body being forged from high-strength steel – that might be the most remarkable of all.

The Tucson driver is assisted by a host of innovations: Automatic Emergency Braking<sup>1</sup> and a Lane Departure Warning System.<sup>2</sup> Blind Spot Detection with Lane Change Assist.<sup>3</sup> Rear Cross-traffic Alert.<sup>4</sup> Rear parking sensors<sup>5</sup> and a standard rearview camera.

It's a level of intelligence that helps make a safe driver an even safer one.



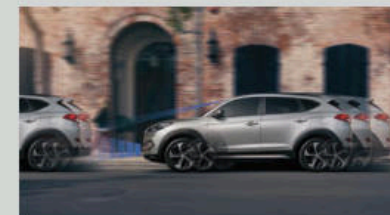
**BLUE LINK® REMOTE ENHANCEMENTS** The 2016 Tucson's Blue Link connected car system features advanced smartphone and smart watch integration.<sup>6</sup> With a tap of your finger, you can remotely start the engine while walking toward it. You can also unlock doors, or flash the lights and honk the horn to locate your Tucson in a crowded parking lot. Blue Link makes calling for emergency assistance just as easy.



**BLIND SPOT DETECTION** The 2016 Tucson Sport and Tucson Limited come with Blind Spot Detection and Lane Change Assist technologies as standard. When it senses vehicles in your blind spot, it alerts the driver with an audible signal and a warning icon flashing in the driver's side mirror.

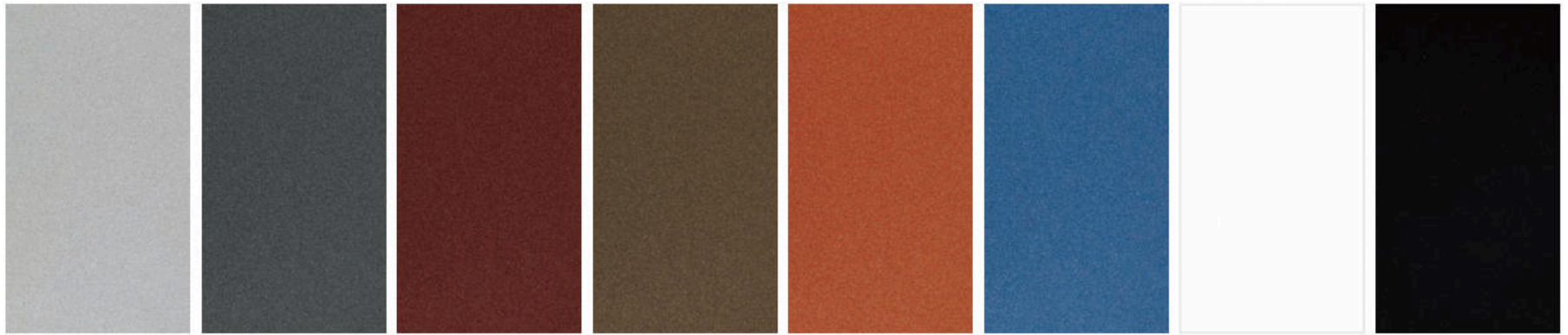


**DYNAMIC BENDING LIGHT** What if your headlights could help you see what's around corners sooner? Tucson's available High Intensity Discharge headlights with Dynamic Bending Light turn their beam in the direction of the steering wheel to illuminate the road ahead as you drive through corners.



**AUTOMATIC EMERGENCY BRAKING** New for 2016, this available Tucson Limited technology uses radar projected in front of the vehicle to determine if other vehicles are present. If so, the driver is alerted by an audible signal. If the driver doesn't brake, AEB intervenes to help prevent a collision.

## EXTERIOR COLORS



Chromium Silver

Coliseum Grey

Ruby Wine

Mojave Sand

Sedona Sunset

Caribbean Blue

Winter White

Ash Black

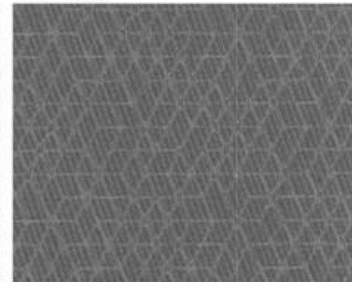
## INTERIOR COLORS

Beige Cloth



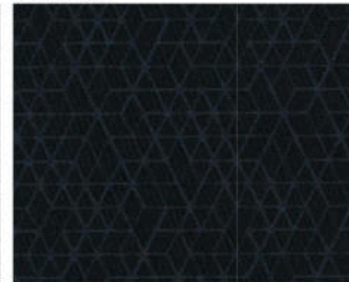
SE / ECO / Sport

Gray Cloth



SE / ECO / Sport

Black Cloth



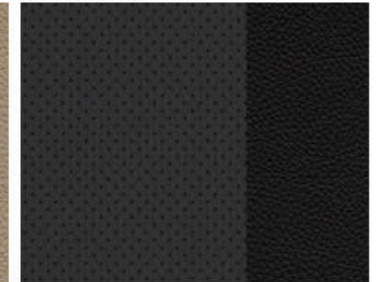
SE / ECO / Sport

Beige Leather



Limited

Black Leather



Limited

## WHEELS



17" Alloy Wheel  
SE / Eco



19" Alloy Wheel  
Sport / Limited

## INNOVATIVE NEW FEATURES



High-Intensity Discharge headlights  
with Dynamic Bending Light



Front door handles  
with approach LEDs



Full-length panoramic sunroof

## 2016 TUCSON SE

### KEY STANDARD FEATURES

- 164 hp, 2.0L Gasoline Direct Injection 4-cylinder engine with Dual Continuously Variable Valve Timing
- 6-speed automatic transmission with SHIFTRONIC®
- Drive Mode Select (Normal, Eco, Sport)
- Remote keyless entry system with alarm
- Air conditioning with cabin air filter
- Tilt-and-telescopic steering wheel with audio, phone and cruise controls
- 6-way adjustable driver seat including height adjustment
- Adjustable head restraints for all seating positions
- YES Essentials® stain-resistant cloth seats (beige only)
- Power door locks and windows with driver's auto-down
- 3.5" LCD multi-information display
- 5" color touchscreen audio display with rearview camera
- AM/FM/SiriusXM®/CD/MP3 audio system with 6 speakers
- 60/40 split fold-down rear seatbacks with recline function and center armrest
- 3 x 12-volt DC power outlets
- Hillstart Assist Control and Downhill Brake Control
- Electronic Stability Control with Traction Control System
- Driver's blind spot mirror
- ABS with Electronic Brake-force Distribution & Brake Assist
- Front, side and side-curtain airbags with rollover sensors
- Tire Pressure Monitoring System with individual tire indicator
- Bodycolor power and heated side mirrors
- Automatic projector headlights with LED accents
- Rear and variable intermittent front windshield wipers
- Windshield washer fluid level sensor
- Windshield wiper de-icer (AWD only)
- Rear spoiler with integrated LED brake light
- 17" alloy wheels

### POPULAR EQUIPMENT PACKAGE

#### SE Standard Features plus:

- + Power driver seat with 4-way lumbar support
- + Driver's auto-down/up power window
- + Dual illuminated vanity mirrors
- + Glove compartment light
- + LED Daytime Running Lights
- + Front foglights
- + Roof side rails and premium side sills

## 2016 TUCSON ECO

### KEY STANDARD FEATURES

#### SE Popular Equipment Package plus:

- + 175 hp, 1.6L Gasoline Direct Injection 4-cylinder turbocharged engine
- + 7-speed EcoShift® Dual Clutch Transmission with SHIFTRONIC®
- + Premium front and rear fascias
- + Chrome-tipped dual exhaust
- + Side mirrors with turn signal indicators
- + "Eco" liftgate badging

## 2016 TUCSON SPORT

### KEY STANDARD FEATURES

#### Eco Standard Features plus:

- + Proximity key entry with push-button start
- + Heated front seats
- + Leather-wrapped steering wheel and shift knob
- + Blind Spot Detection System
- + Rear Cross-traffic Alert
- + Lane Change Assist
- + Illuminated exterior front door handles
- + Hands-free smart liftgate with auto-open and adjustable height setting
- + "Sport 1.6T" liftgate badging
- + 19" alloy wheels



Tech, Tech, and More Tech

"The new Tucson greatly ramps up its list of high-tech safety features.

The new Tucson's other big push is in the area of connectivity."

- From "2016 Hyundai Tucson: U.S.-Spec Details Revealed" on CarandDriver.com, April 2015

## 2016 TUCSON LIMITED

### KEY STANDARD FEATURES

#### Sport Standard Features plus:

- + Leather seating surfaces
- + Premium door panel trim
- + Power front passenger seat
- + Dual zone automatic temperature control with CleanAir Ionizer and auto defogger
- + Premium instrument panel and driver console side panel
- + 8" navigation system with rearview camera
- + Premium 8-speaker audio system
- + Rear air conditioning vents
- + Blue Link® connected car system
- + Auto-dimming rearview mirror with HomeLink® and compass
- + Premium door sill plates
- + Chrome accent grille and exterior door handles
- + LED headlights and taillights
- + Shark-fin roof antenna
- + "Limited 1.6T" liftgate badging

### ULTIMATE PACKAGE

#### Limited Standard Features plus:

- + Panoramic sunroof
- + Front and rear LED maplights
- + Electroluminescent gauge cluster with 4.2" multi-info LCD display
- + Ventilated front seats
- + Heated rear seats
- + High Intensity Discharge headlights with Dynamic Bending Light
- + Lane Departure Warning
- + Automatic Emergency Braking
- + Rear parking sensors

### EXTERIOR DIMENSIONS

- Wheelbase \_\_\_\_\_ 105.1 in
- Overall Length \_\_\_\_\_ 176.2 in
- Overall Width \_\_\_\_\_ 72.8 in
- Overall Height \_\_\_\_\_ 64.8/65.0 in (excludes roof rails/with roof rails)
- Tread Width, front/rear 17" wheels \_\_\_\_\_ 63.3/63.8 in
- Tread Width, front/rear 19" wheels \_\_\_\_\_ 63.1/63.6 in
- Coefficient of Drag \_\_\_\_\_ 0.33 Cd

### INTERIOR DIMENSIONS

- Head Room, front/rear \_\_\_\_\_ 39.6/39.2 in
  - Legroom, front/rear \_\_\_\_\_ 41.5/38.2 in
  - Shoulder Room, front/rear \_\_\_\_\_ 57.1/55.5 in
  - Hip Room, front/rear \_\_\_\_\_ 55.6/54.5 in
  - Cargo capacity, rear seats up \_\_\_\_\_ 30.1 cu ft
  - Cargo capacity, rear seats folded down \_\_\_\_\_ 61.9 cu ft
  - Passenger Volume<sup>1</sup> \_\_\_\_\_ 102.2 cu ft
  - Total Interior Volume<sup>1</sup> \_\_\_\_\_ 133.2 cu ft
- <sup>1</sup> Without panoramic sunroof

### PERFORMANCE

- 2.0L Engine \_\_\_\_\_ GDI 4-cylinder Horsepower/Torque \_\_\_\_\_ 164 hp/151 lb-ft
- 1.6L Engine \_\_\_\_\_ Turbo 4-cylinder Horsepower/Torque \_\_\_\_\_ 175 hp/195 lb-ft

### EPA MILEAGE ESTIMATES (CITY/HIGHWAY/COMBINED)

- SE (FWD) \_\_\_\_\_ 23/31/26 MPG
- SE (AWD) \_\_\_\_\_ 21/26/23 MPG
- Eco (FWD) \_\_\_\_\_ 26/33/29 MPG
- Eco (AWD) \_\_\_\_\_ 25/31/27 MPG
- Sport/Limited (FWD) \_\_\_\_\_ 25/30/27 MPG
- Sport/Limited (AWD) \_\_\_\_\_ 24/28/26 MPG



# Assurance

HYUNDAIASSURANCE.COM

Our commitment to Hyundai owners doesn't end with the transfer of keys. Wherever the road takes you, we've got your back with Hyundai Assurance, an umbrella of services and benefits that includes America's Best Warranty, 24/7 Roadside Assistance, innovative safety and car care features...and more.



## AMERICA'S BEST WARRANTY

POWERTRAIN LIMITED WARRANTY

**10 YEARS 100,000 MILES**

NEW VEHICLE LIMITED WARRANTY

**5 YEARS 60,000 MILES**

ANTI-PERFORATION WARRANTY

**7 YEARS UNLIMITED MILES**

24/7 ROADSIDE ASSISTANCE

**5 YEARS UNLIMITED MILES**

See dealer for LIMITED WARRANTY details. Fuel economy estimated by EPA for comparison only. Mileage may vary. While the information contained in this brochure was correct at the time of printing, specifications and equipment can change. Feature comparisons based on competitor information available at the time of printing. No warranty or guarantee is being extended in this brochure, and Hyundai reserves the right to change product specifications and equipment at any time without incurring obligations. Some vehicles are shown with optional equipment. Specifications apply to U.S. vehicles only. Please contact your Hyundai dealer for current vehicle specifications. As part of Hyundai's commitment to a responsible environment, this brochure was printed using paper certified by the Forest Stewardship Council.<sup>®</sup> FSC<sup>®</sup> certification helps ensure that the highest social and environmental standards are met in the making of the paper we use, contributing to conservation, responsible management, and community-level benefits for people near the forests.

