

2021 Hyundai

# TUCSON



# How far have we taken the SUV? All the way to Tucson.



<sup>1</sup>For J.D. Power 2020 award information, go to [jdpower.com/awards](http://jdpower.com/awards). <sup>2</sup>Surround View Camera System (SVCS) is a parking support system. SVCS cannot completely eliminate blind spots, may not detect every object and does not warn of moving objects. Always check your surroundings before moving your vehicle. See Owner's Manual for further details. <sup>3</sup>Forward Collision-Avoidance Assist (FCA) is designed to assist drivers to avoid, or reduce the severity of, collisions with cars that have slowed or stopped in front of them. It is a supplemental assist and does not replace the need for extreme care and attention by the driver. FCA may not stop the vehicle completely and will not avoid all collisions. Lane Keeping Assist operates only when the lane markings are clearly visible on the road. It will not work under all circumstances and will not prevent loss of control. It is a supplemental assist, and does not replace the need for extreme care and attention by the driver. It uses a camera in the upper windshield area, and it is imperative this area be free of blockage such as stickers, dirt, snow, tinting material, markings and labels. Avoid putting objects on the dashboard that may reflect light or images onto the system camera area. Driver Attention Warning is only a warning to inform the driver of a potential lack of driver attention or drowsiness. It does not detect and provide an alert in every situation. It is the driver's responsibility to remain alert at all times. See Owner's Manual for further details and limitations. <sup>4</sup>Based on 2010, 2011, 2012, 2013, 2014, 2015, 2016, 2017, 2018, 2019 and 2020 Brand Keys Customer Loyalty Engagement Index\*. <sup>5</sup>The hands-free smart liftgate will open when your Proximity Key is within 3 feet of the detection area for at least 3 seconds. Radio transmitters and other vehicle smart keys may interfere with normal operation. Not available on SE, SEL and Value models. Please consult your Owner's Manual for details.

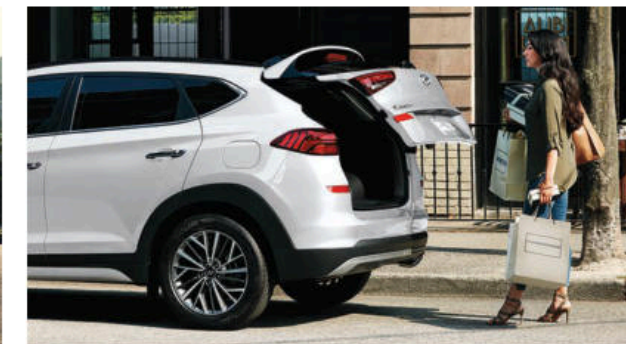
TUCSON Ultimate in Aqua Blue

Looking for a versatile, stylish SUV that doesn't compromise on quality? It's right here, in Tucson. The J.D. Power 2020 U.S. Initial Quality Survey ranks our 2020 Tucson #1 in Initial Quality among compact SUVs.<sup>1</sup> Hyundai's European Design Centre gave Tucson sleek, athletic lines and compact exterior dimensions that help you easily maneuver in and out of urban traffic.

Its ideal size, coupled with features like an available Surround View Monitor,<sup>2</sup> helps you snag parking spots on crowded city streets while avoiding curbs, light poles and other obstacles. Whatever and whoever you're planning to take with you, Tucson's reclining 60/40 split-folding rear seats create a generous amount of space with the

flexibility you need. Open the liftgate, and you'll see more evidence of smart design. In the rear cargo area, a dual-level cargo floor lets you organize – and maximize – the space. There's even a slot to securely stow the removable cargo cover.

Tucson's elevated seating position gives you a commanding view, while a big 7" floating touchscreen display makes it easy to see and control audio and multimedia systems. Then, there are the things Tucson is able to see for you: Standard safety technologies include Forward Collision-Avoidance Assist, Lane Keeping Assist and Driver Attention Warning.<sup>3</sup> Given all of that, it's easy to see why, for the 11th year in a row, Hyundai has ranked as the #1 automotive brand in customer loyalty.<sup>4</sup>



## Sport

With its low-profile roof rails, the Hyundai Tucson looks sporty and stylish – not boxy. The sleek design also helps minimize wind noise that can be generated by protruding roof rails.

## Utility

Need to get to the spacious cargo area, but your hands are full? No problem. Tucson's available auto-open liftgate is hands-free and feet-free.<sup>5</sup> The hands-free smart liftgate is also height-adjustable to help you avoid low overhangs in your garage.



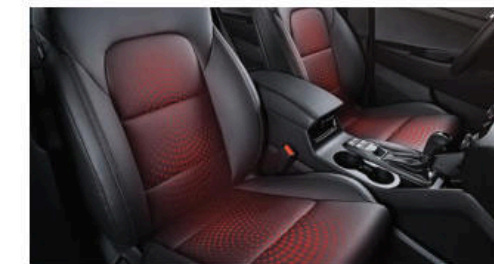
TUCSON Ultimate in Beige Leather

## It's intuitively tuned to your needs.

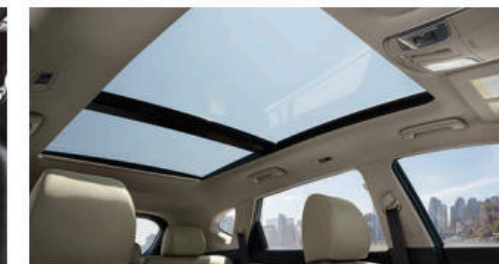
When you're entering Tucson, listen for this: The solid thunk when shutting the door. It's an example of how Hyundai has tuned everything – down to the acoustics of the door latch – to delight your senses. As you listen to Tucson's available 8-speaker Infinity® Premium Audio system, Clari-Fi™ Music Restoration Technology brings back the fullness of nuances lost when digital music files are compressed.

Settle into the available 8-way power driver seat and adjust the lumbar support for your lower back. Sitting in a Tucson Ultimate? Press a button, and soothing air rises from the ventilated front seats. Tucson's climate system is available with dual automatic temperature control, a CleanAir Ionizer and rear seat A/C vents – features normally reserved for upscale SUVs.

Let in light and air through the available panoramic sunroof – another feature found on more expensive SUVs. Need to juice up everyone's smartphones on the go? A 2nd-row USB charge port is available for bringing power to the people, regardless of seating position.



Heated front seats



Panoramic sunroof



Color LCD multi-information display



Rear USB charge port





**2020 Hyundai Tucson**  
with Forward Collision-Avoidance Assist and LED headlights<sup>5</sup>

<sup>1</sup>Do not rely completely on Blind-Spot Collision Warning (BCW) and be sure to use proper lane changing procedures. BCW may not detect every vehicle and will not prevent accidents. BCW provides an audible and visual alert if the turn signal is activated and another vehicle in the blind spot is sensed. There are limitations to the function, range, detection and clarity of these systems. Rear Cross-Traffic Collision Warning (RCCW) is active when the vehicle is in reverse gear and backing at a speed less than 6 MPH. Never rely exclusively on the RCCW. Always look over your shoulder and use your mirrors to confirm rear clearance. There are limitations to the function, detection, range and clarity of the system. See Owner's Manual for details and limitations. <sup>2</sup>Pedestrian Detection helps detect pedestrians, but not in all conditions. See Owner's Manual for details. <sup>3</sup>Smart Cruise Control (SCC) is not a collision avoidance or warning device. SCC is for highway use only and should not be used in poor weather, heavy or varying traffic, or on winding or slippery roads. The driver remains responsible to slow or stop the vehicle to avoid a collision. SCC initiates a full stop when the traffic ahead stops and reengages if the vehicle ahead moves forward within 3 seconds. See Owner's Manual for details. <sup>4</sup>Standard and available safety features vary by model and trim level. See your Hyundai dealer or HyundaiUSA.com for details. <sup>5</sup>To qualify for 2020 TOP SAFETY PICK, a vehicle must earn good ratings in the driver-side and passenger-side small overlap front, moderate overlap front, side, roof strength and head restraint tests. It also must earn an advanced or superior rating for vehicle-to-vehicle and vehicle-to-pedestrian front crash prevention and an acceptable or good headlight rating.

TUCSON Ultimate in Aqua Blue

## Peace-of-mind for an unpredictable world.

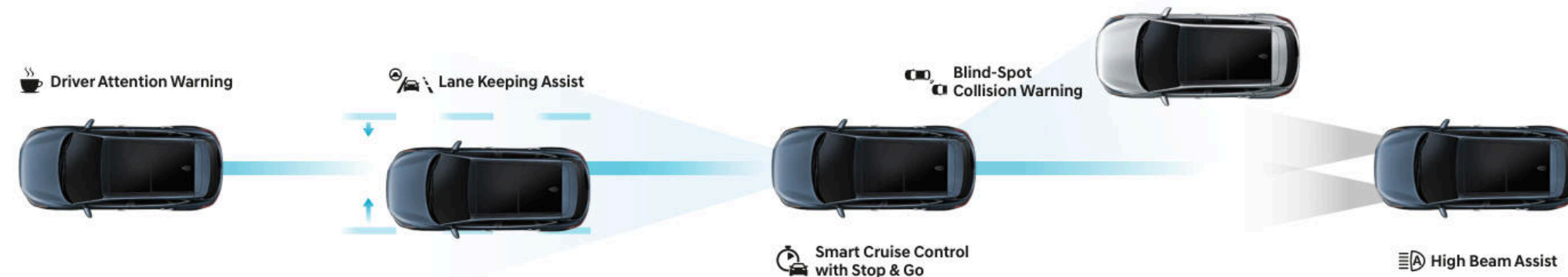
Drive Tucson, and you'll enjoy a deep sense of confidence. You hear it in the powerful sound of its available 2.4L GDI engine. And feel it in the smoothness of its 6-speed automatic transmission.

Beneath the skin, Tucson's unibody is infused with advanced high-strength steel. It's a strong, rigid platform that allows the multi-link rear suspension to achieve a balance of precise handling and a smooth, quiet ride. Available HTRAC All Wheel Drive includes Active Cornering Control to optimize traction and improve agility.

To all of this robust engineering, Hyundai adds SmartSense – a remarkable suite of safety and convenience technologies. Some SUVs in this class make you move up to their more expensive trim levels to get advanced safety features. Not Tucson. Every 2021 model, even the base Tucson SE, comes standard with Forward Collision-Avoidance Assist, Lane Keeping Assist and Driver Attention Warning – innovations designed to alert drivers to potential hazards. And help avoid accidents in the first place.

Available safety features like Blind-Spot Collision Warning, Rear Cross-Traffic Collision Warning and a Surround View Monitor give you a full 360-degree sense of what's happening around your vehicle.<sup>1</sup> Tucson Ultimate offers our most comprehensive set of safety features – it adds Pedestrian Detection<sup>2</sup> to Forward Collision-Avoidance Assist and comes standard with High Beam Assist, rain-sensing wipers and Smart Cruise Control with Stop & Go.<sup>3</sup>

### SmartSense Safety Technologies<sup>4</sup>



Rear Cross-Traffic Collision Warning



HTRAC All Wheel Drive



Forward Collision-Avoidance Assist with Pedestrian Detection



Surround View Monitor

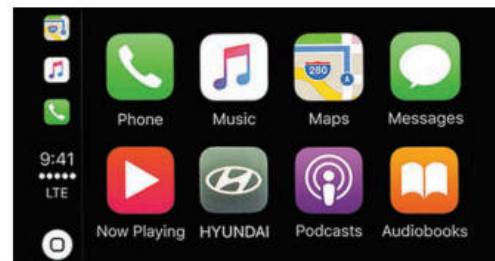
# In this relationship, you'll feel really connected.

We know how much of your daily life is tied to your smartphone. So we made sure to extend that connection with Hyundai's Blue Link<sup>®</sup> Connected Car System, complimentary for your first three years.<sup>1</sup> Using the free MyHyundai app, your smartphone becomes a remote control capable of locking/unlocking your Tucson and starting its engine before you walk out the door.<sup>2</sup>

With your Amazon Echo<sup>®</sup> or Google Home<sup>™</sup> device, you can also set the cabin temperature in your Tucson remotely using voice commands from the comfort of your couch or kitchen.<sup>3</sup> Blue Link Guidance lets you search, download and navigate to addresses and points of interest using voice commands from the driver seat or your smartphone before entering your Tucson Ultimate.<sup>4</sup> And here's more good news – on every Tucson model, Apple CarPlay<sup>®</sup> and Android Auto<sup>™</sup> come standard.<sup>5</sup> You can use Tucson's large touchscreen display or voice commands to access maps and navigation, your phone's contact lists, texts, calls, music library and more. An available wireless charging pad ensures your compatible smartphone stays powered up as you power through the day.<sup>6</sup>

Then there's Blue Link Connected Care, which offers exceptional peace of mind. Wherever you may roam, trained operators are standing by to provide emergency roadside assistance in the event of an accident where airbags are deployed.<sup>7</sup> Your Blue Link app can even help law enforcement recover your vehicle if it's ever stolen. Visit HyundaiBlueLink.com for more information on the complete list of innovative features Blue Link puts at your fingertips.

<sup>1</sup> Not available with Tucson SE. Blue Link is complimentary for the first 3 years of ownership and requires an active Blue Link subscription. Three-year term starts from the new vehicle date of first use and is available for new vehicle purchases and leases based upon terms and conditions on the Blue Link subscription enrollment pages. Only use Blue Link and corresponding devices when it is safe to do so. Cellular and GPS coverage is required. Features, specifications, and fees vary by subscription plan and are subject to change. For details, visit HyundaiUSA.com or your authorized Hyundai dealer. <sup>2</sup> Requires active Blue Link Remote subscription. <sup>3</sup> Remote climate control available on properly equipped models with fully automatic temperature control. Amazon, Alexa and all related logos and motion marks are trademarks of Amazon.com, Inc. or its affiliates. Google Home and related marks are trademarks of Google Inc. <sup>4</sup> Requires navigation-equipped vehicle and active Blue Link Guidance subscription. <sup>5</sup> Apple CarPlay works with iPhone 5s, iPhone 5c, iPhone 5 and later models running the latest version of iOS 7 and above. Apple is a registered trademark of Apple Inc. Android Auto works with smartphones running on Android 5.0 Lollipop and higher. Android, Android Auto, Google Play and other marks are trademarks of Google Inc. <sup>6</sup> Qi wireless charging function is based on smartphone compatibility and/or specific accessory cases. <sup>7</sup> Blue Link agents will contact existing emergency service responders.



Apple CarPlay



Wireless device charging



TUCSON Ultimate in White Cream



**Automatic Emergency Assistance**  
Blue Link Connected Care offers 24/7 SOS Emergency Assistance and Automatic Collision Notification that calls for help if you're in an accident where airbags deploy.



**On-Demand Diagnostics**  
Run vehicle diagnostics from your Hyundai's touchscreen, report issues at the press of a button and receive Monthly Vehicle Health Reports or maintenance reminders by email.



**Destination Send-to-Car**  
Use your smartphone to find restaurants or points of interest that may not be updated on your vehicle's maps, then send the destination to Tucson's navigation system.



**Remote Controls**  
Use your smartphone, home assistant or wearable device to remotely start your Tucson's engine, unlock the doors, set the cabin temperature and more.



**Car Finder**  
Our Car Finder smartphone app feature lets you navigate your way through crowded parking lots back to your Tucson.



**Service Link**  
Conveniently schedule your vehicle for service from the driver seat of your Tucson or using your MyHyundai smartphone app.

### TUCSON SE



#### Popular Features

- 7" color touchscreen AM/FM/MP3 audio display
- Apple CarPlay® and Android Auto™
- Forward Collision-Avoidance Assist
- YES Essentials® stain-resistant cloth seats (gray/beige)

### TUCSON SEL



#### Popular Features

- Chrome-tipped dual-outlet exhaust
- 18" alloy wheels
- Rear USB charge port
- Dual automatic temperature control with CleanAir Ionizer
- Rear air conditioning vents

### TUCSON Limited



#### Popular Features

- Chrome-accent front grille and door handles
- Surround View Monitor
- Heated steering wheel
- Leather seating surfaces
- 8-way power front passenger seat

### TUCSON Value



#### Popular Features

- Proximity Key entry with push button start
- 8-way power driver seat with 2-way power lumbar
- Heated front seats
- Blind-Spot Collision Warning
- Rear Cross-Traffic Collision Warning

### TUCSON Sport



#### Popular Features

- LED headlights and taillights
- LED Daytime Running Lights
- Hands-free smart liftgate with auto open
- Leather-wrapped steering wheel
- Wireless device charging
- Infinity® Premium Audio with 8 speakers

### TUCSON Ultimate



#### Popular Features

- Forward Collision-Avoidance Assist with Pedestrian Detection
- 8" high-resolution touchscreen navigation system
- Smart Cruise Control with Stop & Go
- Power tilt-and-slide panoramic sunroof

#### 2.0L GDI 4-Cylinder

hp **161**

lb-ft **150**

EPA MPG Estimates (City/Highway/Combined)<sup>1</sup>

**23/28/25** **22/25/23**

FWD 6-speed A/T AWD 6-speed A/T

#### 2.4L GDI 4-Cylinder

hp **181**

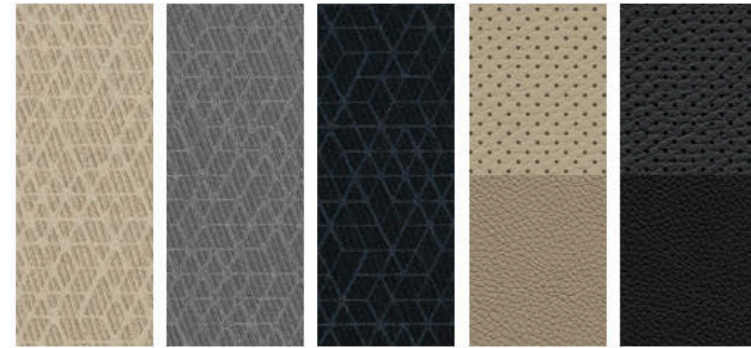
lb-ft **175**

EPA MPG Estimates (City/Highway/Combined)<sup>1</sup>

**22/28/25** **21/26/23**

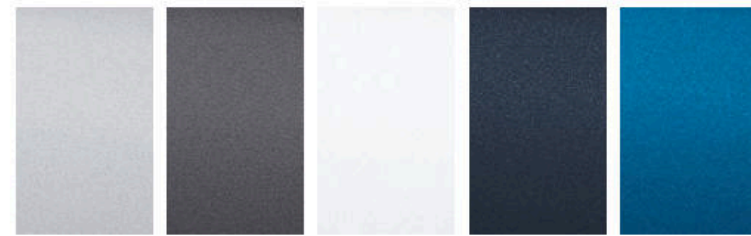
FWD 6-speed A/T AWD 6-speed A/T

### Interior Colors

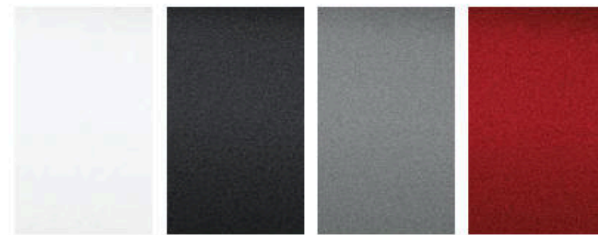


SE / Value / SEL / Sport Beige Cloth SE / Value / SEL / Sport Gray Cloth SE / Value / SEL / Sport Black Cloth Limited / Ultimate Beige Leather Limited / Ultimate Black Leather

### Exterior Colors



Stellar Silver Magnetic Force Winter White Dusk Blue Aqua Blue



White Cream / White Pearl Ash Black Coliseum Gray Crimson Red

### Wheels



SE / Value 17" Alloy Wheel SEL / Limited / Ultimate 18" Alloy Wheel Sport 19" Alloy Wheel

### TUCSON

	SE	Value	SEL	Sport	Ltd	Ult
<b>Power &amp; Handling</b>						
161 hp/150 lb-ft, 2.0L GDI 4-cylinder engine	●	●	–	–	–	–
181 hp/175 lb-ft, 2.4L GDI 4-cylinder engine	–	–	●	●	●	●
6-speed automatic transmission with SHIFTRONIC®	●	●	●	●	●	●
Drive Mode Select	●	●	●	●	●	●
HTRAC All Wheel Drive and Downhill Brake Control	○	○	○	○	○	○

	SE	Value	SEL	Sport	Ltd	Ult
<b>Exterior Features</b>						
Chrome accent grille	–	–	–	–	●	●
Automatic headlights	●	●	●	●	●	●
Projector headlights	●	●	●	–	–	–
LED headlights and taillights	–	–	–	●	●	●
Front fog lights and LED Daytime Running Lights	–	–	–	●	●	●
LED accent lights	–	●	●	●	●	●
Side mirrors with LED turn signal indicators	–	–	–	–	●	●
Heated side mirrors	–	●	●	●	●	●
Chrome exterior door handles	–	–	–	–	●	●
Roof side rails	–	●	●	●	●	●
Chrome-tipped dual-outlet exhaust	–	–	●	●	●	●
Bodycolor rear spoiler with LED center brake light	●	●	●	●	●	●
Acoustic-laminated noise-reducing windshield	●	●	●	●	●	●
Solar front glass and privacy rear glass	●	●	●	●	●	●
Rain-sensing windshield wipers	–	–	–	–	–	–
Windshield wiper de-icer	○	○	○	○	○	○
Hands-free smart liftgate with auto open	–	–	–	●	●	●
Rearview camera with dynamic parking guidelines	●	●	●	●	●	●

	SE	Value	SEL	Sport	Ltd	Ult
<b>Interior Features</b>						
Proximity Key entry with push button start	–	●	●	●	●	●
4.2" color LCD multi-information display	–	–	–	–	–	●
Tilt-and-telescopic steering wheel with audio, phone and cruise controls	●	●	●	●	●	●
Electronic Parking Brake with Automatic Vehicle Hold	●	●	●	●	●	●
Leather-wrapped steering wheel and shift knob	–	–	–	●	●	●
Power windows with driver's auto-down	●	–	–	–	–	–
Power windows with driver's auto-down/up	–	●	●	●	●	●
Dual automatic temperature control with CleanAir Ionizer and auto-defogger	–	–	●	●	●	●
8-way power driver seat with 2-way power lumbar support	–	●	●	●	●	●
8-way power front passenger seat	–	–	–	–	●	●
YES Essentials® stain-resistant cloth seats (gray & beige)	●	●	●	●	–	–
Heated steering wheel	–	–	–	–	●	●
Leather seating surfaces	–	–	–	–	●	●
Ventilated front seats and heated rear seats	–	–	–	–	–	●
Heated front seats with 3 temperature settings	–	●	●	●	●	●
Adjustable head restraints for all positions	●	●	●	●	●	●

### TUCSON

	SE	Value	SEL	Sport	Ltd	Ult
<b>Interior Features</b>						
Auto-dimming rearview mirror with HomeLink®	–	–	–	●	●	●
Floor console-mounted rear vents	–	–	●	●	●	●
Reclining 60/40 split-folding rear seats with center armrest	●	●	●	●	●	●
Dual-level cargo floor	●	●	●	●	●	●
Sunvisors with illuminated vanity mirrors	–	●	●	●	●	●
Power tilt-and-slide panoramic sunroof	–	–	–	–	–	●
Smart Cruise Control with Stop & Go	–	–	–	–	–	●

	SE	Value	SEL	Sport	Ltd	Ult
<b>Advanced Safety</b>						
Forward Collision-Avoidance Assist	●	●	●	●	●	–
Forward Collision-Avoidance Assist with Pedestrian Detection	–	–	–	–	–	●
Lane Keeping Assist	●	●	●	●	●	●
Driver Attention Warning	●	●	●	●	●	●
Blind-Spot Collision Warning	–	●	●	●	●	●
Rear Cross-Traffic Collision Warning	–	●	●	●	●	●
High Beam Assist	–	–	–	–	–	●
Surround View Monitor	–	–	–	–	●	●

	SE	Value	SEL	Sport	Ltd	Ult
<b>Audio &amp; Connected Car Technology</b>						
7" color touchscreen AM/FM/MP3 audio display with USB/AUX input jack and 6 speakers	●	●	●	–	–	–
SiriusXM Satellite Radio and HD Radio™	–	●	●	●	●	●
315-Watt Infinity® Premium Audio system with Clari-Fi™ Music Restoration Technology and 8 speakers	–	–	–	●	●	●
8" high-resolution touchscreen navigation system	–	–	–	–	–	●
Apple CarPlay® and Android Auto™	●	●	●	●	●	●
Bluetooth® hands-free phone system	●	●	●	●	●	●
Wireless device charging	–	–	–	●	●	●
Blue Link® Connected Car System (3 years complimentary)	–	●	●	●	●	●
Rear USB charge port	–	–	●	●	●	●
Three 12-volt power outlets (2 front/1 cargo area)	●	●	●	●	●	●

● Standard ○ Optional – Not Available Ltd = Limited Ult = Ultimate

	TUCSON
<b>Exterior / Interior Dimensions</b>	
Wheelbase	105.1 in
Overall Length	176.4 in
Overall Width	72.8 in
Overall Height (with roof side rails)	64.8 (65.0) in
Headroom – front / rear (with sunroof)	39.6 (37.9) / 39.2 (38.1) in
Legroom – front / rear	41.5 / 38.2 in
Shoulder Room – front / rear	57.1 / 55.5 in
Total Interior Volume	133.2 cu ft
Passenger Volume	102.2 cu ft
Cargo Capacity – rear seats up / folded down	31.0 / 61.9 cu ft

<sup>1</sup>EPA estimates for comparison only. Mileage may vary. Your actual mileage will vary with options, driving conditions, driving habits and the vehicle's condition.



Hyundai Hope On Wheels®

Helping Kids Fight Cancer Since 1998



## Hope makes every Hyundai better.

Each time we sell a Hyundai, a portion goes to Hyundai Hope On Wheels® to help find a cure for childhood cancer. Over the last 22 years, Hyundai Hope On Wheels has donated more than \$172 million. Hope is our greatest feature. And it comes standard on every Hyundai. For more information, please visit [HyundaiHopeOnWheels.org](http://HyundaiHopeOnWheels.org).



## America's Best Warranty

POWERTRAIN  
LIMITED WARRANTY

10 YEARS 100,000 MILES

NEW VEHICLE  
LIMITED WARRANTY

5 YEARS 60,000 MILES

ANTI-PERFORATION  
WARRANTY

7 YEARS UNLIMITED MILES

24/7 ROADSIDE  
ASSISTANCE

5 YEARS UNLIMITED MILES



**Hyundai**  
Complimentary  
Maintenance

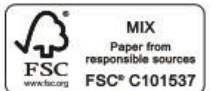
Complimentary maintenance includes Hyundai-approved oil and oil filter change (except for electric vehicles and fuel cell electric vehicles) plus tire rotation at normal factory-scheduled intervals for 3 years or 36,000 miles, whichever comes first. This offer valid only for new 2020-2021 Hyundai models purchased or leased on or after February 1, 2020. See your Hyundai dealer for further details and limitations.

HYUNDAI  
**Assurance**

[HYUNDAIASSURANCE.COM](http://HYUNDAIASSURANCE.COM)

Our commitment to Hyundai owners doesn't end with the transfer of keys. Wherever the road takes you, we've got your back with Hyundai Assurance, an umbrella of services and benefits that includes America's Best Warranty, 24/7 Roadside Assistance, innovative safety and car care features...and more.

See dealer for LIMITED WARRANTY details. Fuel economy estimated by EPA for comparison only. Mileage may vary. While the information contained in this brochure was correct at the time of printing, specifications and equipment can change. Feature comparisons based on competitor information available at the time of printing. No warranty or guarantee is being extended in this brochure, and Hyundai reserves the right to change product specifications and equipment at any time without incurring obligations. Some vehicles are shown with optional equipment. Specifications apply to U.S. vehicles only. Please contact your Hyundai dealer for current vehicle specifications. As part of Hyundai's commitment to a responsible environment, this brochure was printed using paper certified by the Forest Stewardship Council®. FSC® certification helps ensure that the highest social and environmental standards are met in the making of the paper we use, contributing to conservation, responsible management and community-level benefits for people near the forests.



©2020 HYUNDAI NP020T2021