

2021 Hyundai

# VELOSTER N





# Veloster N: Performance to the Nth degree.

VELOSTER N in Performance Blue

The first of Hyundai's high-performance N series, Veloster N is named for Namyang – our global R&D facility – and Nürburgring, the epic European road racing circuit where Veloster N earned its street cred. No wonder Veloster N looks, sounds and reacts like it was born on the track.

A two-stage rear spoiler and large-bore dual exhaust outlets tucked into the rear air diffuser hint at the power that lies underfoot – a turbocharged 275-hp 2.0L engine. For 2021, Veloster N is available with an N 8-speed Wet Dual Clutch Transmission

and an Active Sport Exhaust system that produces crackling exhaust notes with each shift. Together with a body, suspension and brakes all reinforced to handle the added power, Veloster N is the tip of our high-performance spear.

An electronic limited-slip N Corner Carving Differential features Torque Vectoring Control. It intelligently varies the torque distributed to each drive wheel, powering the front wheel with the most grip. The result? Maximum cornering speed is increased, while wheel slip and understeer are reduced for laser-like corner carving.

## Instant karma.

Beneath Veloster N's innovative three-door styling, high-strength steel is strategically applied to a reinforced core body structure to create a rigid – yet remarkably lightweight – design that helps deliver instant reflexes behind the wheel. Press the throttle, and Veloster N transfers power to the pavement with stunning quickness.

Exactly how your Veloster N responds is up to you. Drivers can choose between five drive modes. Each mode has unique parameters for the engine, suspension, Electronic Stability Control, N Corner Carving Differential, engine sound, steering and rev matching.

In the N Custom mode, drivers can select from Normal, Sport and Sport+ settings for each high-performance component to match driving preferences and road conditions. Or just max out everything by pressing the dedicated N-mode button on the steering wheel. Depending on the drive mode, a twin-outlet variable exhaust valve system lets the driver select exhaust sounds ranging from normal to wickedly powerful.



Hyundai Veloster N TCR Race Cars



Rear spoiler & LED taillights



19" wheel with red N brake caliper



LED Daytime Running Lights



N Grin Control System – Custom Mode menu



Forward Collision-Avoidance Assist



Lane Keeping Assist



Lane Following Assist



Rear Cross-Traffic Collision Warning



Blind-Spot Collision Warning



Driver Attention Warning

### Serious Safety

Driving is not all fun and games. It has a serious side, too. Veloster N features a long list of advanced safety technologies, so you can enjoy the drive with a reassuring measure of confidence. That's Hyundai SmartSense. For more information, please visit [HyundaiUSA.com](http://HyundaiUSA.com).





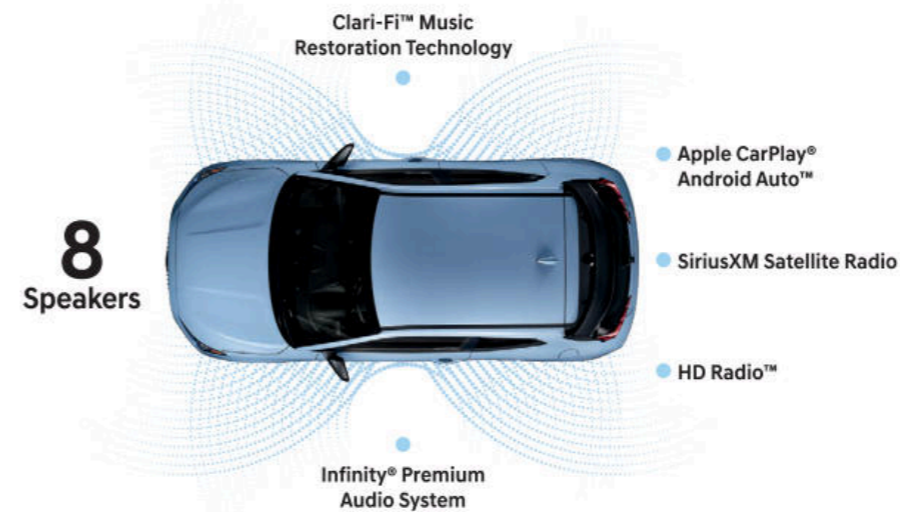
VELOSTER N in Black Cloth / Leatherette Combination

## Warning: May cause permanent grinning.

Veloster N's driver-oriented dash layout will start you smiling the moment you grip the perforated leather steering wheel and press the engine's start button. Stylish N Light Sport Bucket Seats with contrasting blue stitching feature deep bolsters that hold you firmly in place through twists and turns. To assist with passing maneuvers, a new N Grin Shift program on Veloster N's available Dual Clutch Transmission helps put other cars in your rearview mirror at the press of a button, thanks to a temporary boost in peak torque and improved transmission response for 20 seconds.

A floating 8" touchscreen comes standard with a navigation system that lets you plot a course for taking the long way to your destination using voice commands, a split-screen display, junction view lane guidance and subscription-free traffic data via HD Radio.™ It also controls an Infinity® premium audio system that uses Clari-Fi™ technology to restore sound qualities lost in compressed digital music.

Automatic temperature control also comes standard to help create the perfect cockpit climate. Speaking of comfort, Veloster N's rear seats are roomy enough for grown adults. With its wide-opening hatch and 60/40 split-folding rear seats, Veloster N even has the cargo-swallowing versatility of a compact sport utility vehicle.



Rearview camera with dynamic guidelines



N 8-speed Wet Dual Clutch Transmission



Drive Mode and N steering wheel buttons



Veloster N instrument cluster

# Stay glued to the road. And everything else you care about.

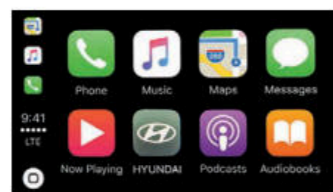
Hyundai's Blue Link® Connected Car System makes it easy to stay connected from wherever you are.<sup>1</sup> Simply download the MyHyundai app, and your smartphone becomes a remote control that lets you unlock your Veloster N's doors and start the engine before walking out the door.<sup>2</sup> With your Amazon Echo® or Google Home™ device, you can also use voice commands to set your car's cabin temperature from the comfort of your couch.<sup>3</sup>

Blue Link's Guidance package lets you search for addresses or points of interest on your smartphone, then download the driving directions to Veloster N's navigation system before you slip behind the wheel.<sup>4</sup> Standard Apple CarPlay® and Android Auto™ also let your smartphone sync to Veloster N's large touchscreen display for seamless access to your contact lists, texts, calls, maps and navigation, music library and more.<sup>5</sup>

Then there's Blue Link Connected Care. Like all Blue Link packages, it's complimentary for your first three years and offers exceptional peace of mind.<sup>6</sup> Visit HyundaiBlueLink.com for more information on the innovative features Blue Link puts at your fingertips.



Amazon Echo integration



Apple CarPlay



Dual USB charge ports

<sup>1</sup> Blue Link Connected Care, Remote, and Guidance (factory-equipped navigation required) packages are complimentary for the first 3 years of ownership and require an active Blue Link subscription agreement subject to the Connected Services Terms and Conditions. Three-year term starts from the new vehicle date-of-first-use, is available for new vehicle purchases and leases, and is transferable to subsequent owners subject to the Terms and Conditions. Only use Blue Link and corresponding devices when safe to do so. Cellular and GPS coverage is required. Features, specifications and fees are subject to change. For more on details and limitations, visit HyundaiUSA.com or your authorized Hyundai dealer. <sup>2</sup> Requires active Blue Link subscription with Remote package. Remote engine start requires vehicles equipped with push button start and a Dual Clutch Transmission. Remote climate control available on properly equipped models with fully automatic temperature control. Remote stop only available when in remote start mode. <sup>3</sup> Amazon, Alexa and all related logos and motion marks are trademarks of Amazon.com, Inc. or its affiliates. Google Home is a trademark of Google Inc. <sup>4</sup> Requires active Blue Link subscription with Guidance package. <sup>5</sup> Apple CarPlay® is a registered trademark of Apple Inc. Android Auto™ is compatible with Android™ phones running Android 5.0 or higher. Android Auto may not be available on all devices and is not available in all countries or regions. Additional apps may be required. Android and Android Auto are trademarks of Google LLC. <sup>6</sup> Requires active Blue Link subscription with Connected Care package. <sup>7</sup> Blue Link agents will contact existing emergency service responders. <sup>8</sup> EPA estimates for comparison only. Mileage may vary. Your actual mileage will vary with options, driving conditions, driving habits and the vehicle's condition.



### Automatic Emergency Assistance

Blue Link Connected Care offers 24/7 SOS Emergency Assistance and Automatic Collision Notification that calls for help if you're in an accident where airbags deploy.<sup>7</sup>



### On-Demand Diagnostics

Run vehicle diagnostics from your Veloster N's touchscreen, report issues at the press of a button and receive Monthly Vehicle Health Reports or maintenance reminders by email.



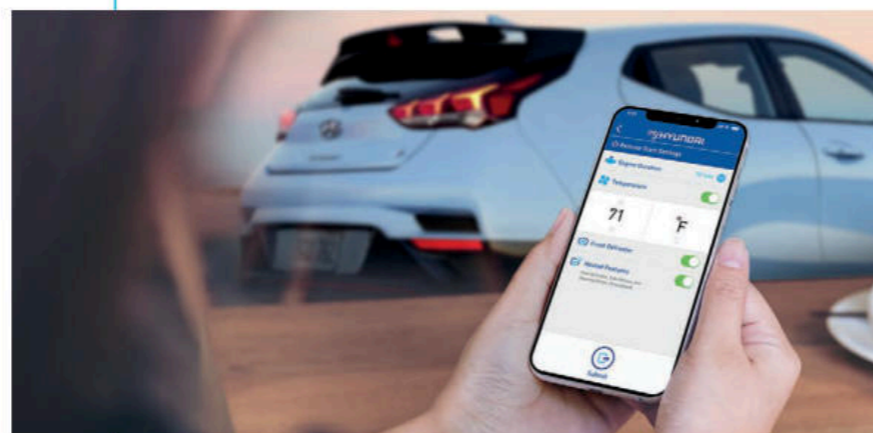
### Destination Send-to-Car

Use your smartphone to find restaurants or points of interest that may not be updated on your vehicle's maps, then send the destination to Veloster N's navigation system.<sup>4</sup>



### Remote Controls

Use your smartphone, smartwatch or home assistant device to remotely start your car's engine, unlock the doors, set the cabin temperature and more.<sup>2</sup>



### Car Finder

Our Car Finder smartphone app feature lets you navigate your way through crowded parking lots back to your Veloster N.



### Service Link

Conveniently schedule your Veloster N for service from the driver's seat or by using your MyHyundai smartphone app.

## VELOSTER N



### Popular Features

- Available N 8-speed Wet Dual Clutch Transmission
- Active Sport Exhaust featuring pops and crackles
- Electronically Controlled Suspension
- N Corner Carving Differential (limited-slip differential with electronic control)
- N Light Sport Bucket Seats
- Infinity® premium audio with Apple CarPlay®/Android Auto™

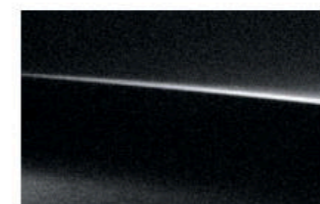
### 2.0L Turbo GDI 4-cylinder

hp	275
lb-ft	260

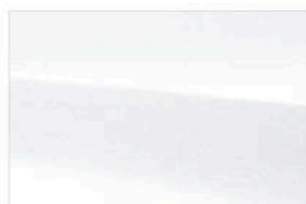
### EPA MPG Estimates (City/Highway/Combined)<sup>8</sup>

22/28/25 6-speed M/T  
20/27/22 8-speed N DCT

### Exterior Colors



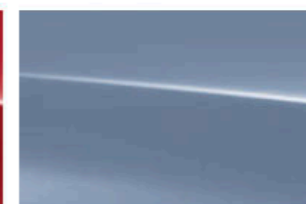
Ultra Black



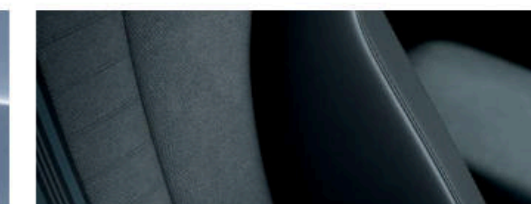
Chalk White/Lunar White



Racing Red



Performance Blue



Black Cloth / Leatherette Combination

### Wheels



19" Alloy Wheel

## VELOSTER

### Power & Handling

275 hp/260 lb-ft, 2.0L Turbo GDI 4-cylinder engine	•
Active Sport Exhaust System	•
6-speed manual transmission with downshift rev-matching	•
N 8-speed Wet Dual Clutch Transmission (N DCT) with paddle shifters	○
Electronically Controlled Suspension	•
Multi-link rear suspension	•
N Grin Control System – Drive Mode Select	•
13.6" front and 12.4" rear ventilated brake rotors	•
N Corner Carving Differential	•

### Exterior Features

LED Daytime Running Lights	•
Automatic on/off headlights	•
LED low-beam headlights and LED taillights	•
N-specific body styling and rear underbody air diffuser	•
Large-bore dual exhaust outlets	•
Dual power heated side mirrors with turn signal indicators	•
Large 2-stage rear spoiler with integrated center brake light	•
19" Pirelli P Zero™ summer performance tires	•

### Interior Features

Proximity Key entry with push button start	•
4.2" color LCD multi-information display	•
Sequential shift light indicator	•
Rearview camera with dynamic guidelines	•
Tilt-and-telescopic steering wheel with cruise controls	•
N-exclusive sport steering wheel, shift knob and instrument cluster	•
Perforated leather-wrapped steering wheel	•
Automatic temperature control with auto-defogging	•
6-way adjustable driver's seat	•
N Light Sport Bucket Seats with cloth/leatherette seating surfaces	•
60/40 split fold-flat rear seats	•

## VELOSTER

### Interior Features

Alloy sport pedals	•
Driver's auto-up window	•
N badged floor mats	•

### Advanced Safety

Forward Collision-Avoidance Assist	•
Lane Following Assist	•
Lane Keeping Assist	•
Driver Attention Warning	•
Blind-Spot Collision Warning with Rear Cross-Traffic Collision Warning	•

### Audio & Connected Car Technology

8" touchscreen navigation AM/FM/MP3 audio system with 8 speakers	•
Infinity® Premium Audio system with Clari-Fi™ Music Restoration Technology	•
Bluetooth® hands-free phone system with voice recognition	•
Android Auto™ and Apple CarPlay®	•
SiriusXM Satellite Radio with HD Radio™	•
Blue Link® Connected Car System (3 years complimentary)	•
12V power outlet and dual USB charge ports	•

• Standard ○ Optional

### Exterior & Interior Dimensions

	Veloster N
Wheelbase	104.3 in
Overall Length	167.9 in
Overall Width	71.3 in
Overall Height	54.9 in
Headroom, front / rear	38.1 / 35.9 in
Legroom, front / rear	42.6 / 34.1 in
Cargo Volume, rear seats up / down	19.9 / 44.5 cu ft
Total Interior Volume	109.8 cu ft



Hyundai Hope On Wheels®

Helping Kids Fight Cancer Since 1998



## Hope makes every Hyundai better.

Each time we sell a Hyundai, a portion goes to Hyundai Hope On Wheels® to help find a cure for childhood cancer. Over the last 22 years, Hyundai Hope On Wheels has donated more than \$172 million. Hope is our greatest feature. And it comes standard on every Hyundai. For more information, please visit [HyundaiHopeOnWheels.org](http://HyundaiHopeOnWheels.org).



## America's Best Warranty

POWERTRAIN  
LIMITED WARRANTY

10 YEARS 100,000 MILES

NEW VEHICLE  
LIMITED WARRANTY

5 YEARS 60,000 MILES

ANTI-PERFORATION  
WARRANTY

7 YEARS UNLIMITED MILES

24/7 ROADSIDE  
ASSISTANCE

5 YEARS UNLIMITED MILES



Complimentary maintenance includes Hyundai-approved oil and oil filter change (except for electric vehicles and fuel cell electric vehicles) plus tire rotation at normal factory-scheduled intervals for 3 years or 36,000 miles, whichever comes first. This offer valid only for new 2020-2021 Hyundai models purchased or leased on or after February 1, 2020. See your Hyundai dealer for further details and limitations.



Our commitment to Hyundai owners does not end with the transfer of keys. Wherever the road takes you, we've got your back with Hyundai Assurance, an umbrella of services and benefits that includes America's Best Warranty, 24/7 Roadside Assistance, innovative safety and car care features...and more.

See dealer for LIMITED WARRANTY details. Fuel economy estimated by EPA for comparison only. Mileage may vary. While the information contained in this brochure was correct at the time of printing, specifications and equipment can change. Feature comparisons based on competitor information available at the time of printing. No warranty or guarantee is being extended in this brochure, and Hyundai reserves the right to change product specifications and equipment at any time without incurring obligations. Some vehicles are shown with optional equipment. Specifications apply to U.S. vehicles only. Please contact your Hyundai dealer for current vehicle specifications. As part of Hyundai's commitment to a responsible environment, this brochure was printed using paper certified by the Forest Stewardship Council® FSC® certification helps ensure that the highest social and environmental standards are met in the making of the paper we use, contributing to conservation, responsible management and community-level benefits for people near the forests.

