

2022

VELOSTER N





VELOSTER N: Totally in tune with you.

VELOSTER N in Performance Blue

Veloster N started the N series of high-performance vehicles from Hyundai. The N comes from Namyang, the site of our global R&D facility. N is also a nod to Nürburgring, the fabled test track where Hyundai engineers dialed in the performance of Veloster N.

But even with all of the expertise Hyundai brings to the performance-tuning party – which includes multiple championships in Touring Car Racing and the FIA World Rally Championship – there is one expert we rank above the rest: You.

With Veloster N, you get the final say in how your car feels and sounds. You get to tune the precise response from its 275-hp turbocharged engine, Electronically Controlled Suspension, N Corner Carving Differential and other advanced technologies.

See that blue checkered flag button on the steering wheel? It triggers the N Grin Control System, a tuner-culture phenomenon that takes the performance of Veloster N to the Nth degree. On your terms, of course.

Three doors, eight speeds and five modes: It's a powerful formula.

Veloster N's innovative three-door styling includes a 2-stage rear spoiler and large-bore dual exhaust outlets tucked into the rear air diffuser. Beneath all the style is substance: A high-strength steel core reinforced to create a rigid – yet remarkably lightweight – structure.

Press the throttle, and Veloster N transfers power to the pavement with stunning quickness through an available N 8-speed Wet Dual Clutch Transmission. Need to execute a passing maneuver? The press of a button engages the N Grin Shift program, which provides a temporary boost in peak torque and improved transmission response for 20 seconds.

Exactly how your Veloster N responds is up to you. As the driver, you choose between five drive modes. In the N Custom mode, you can select Normal, Sport or Sport+ settings for individual high-performance components to match your driving preferences and road conditions. Or just max out everything by pressing the dedicated N Mode button on the steering wheel. Depending on the drive mode, a twin-outlet variable exhaust valve system lets you select exhaust sounds ranging from normal to powerful pops, snaps and snarls.

But don't let Veloster's playful attitude fool you. When it comes to your safety, Hyundai is all business. Veloster N comes with Hyundai SmartSense, a suite of advanced safety technologies that let you enjoy the drive with a reassuring measure of confidence.



Hyundai VELOSTER N TCR Race Cars



19" alloy wheels with red N brake calipers



Rear spoiler and LED taillights

Hyundai SmartSense Technologies





VELOSTER N in Black Cloth / Leatherette Combination

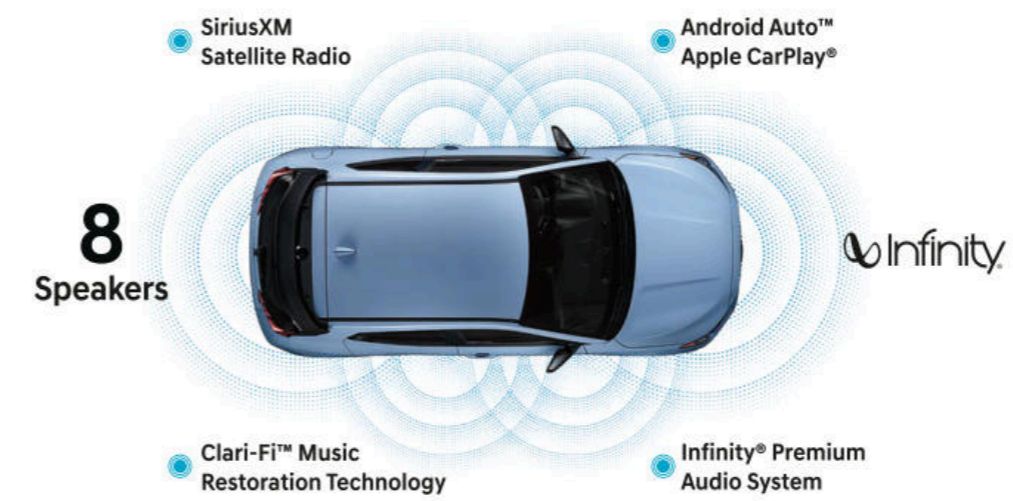
Discover why they make driving gloves.

Grip the perforated leather steering wheel of your Veloster N. Press the engine's start button and watch the instrument needles sweep across the dials embedded in the driver-oriented dash. Enjoy the firm support of deep bolsters placed within the N Light Sport Bucket Seats as you're held tight through the twists and turns of your favorite roads.

That's when you'll also feel the effect of an electronically controlled limited-slip N Corner Carving Differential with Torque Vectoring Control. It intelligently varies the torque distributed to each drive wheel, powering the front wheel with the most grip. The result? An increase in maximum cornering speed with reduced wheel slip.

Finding your road is easy, thanks to the floating 8" touchscreen's standard navigation system. It lets you plot a course for taking the long way to your destination using voice commands, a split-screen display, junction view lane guidance and subscription-free traffic data via HD Radio.™ It also controls an Infinity® premium audio system that uses Clari-Fi™ Music Restoration Technology to bring back sound qualities lost in compressed digital music.

Automatic temperature control also comes standard to help create the perfect cockpit climate. For everyone's comfort, Veloster N's rear seats are roomy enough for grown adults. And with its wide-opening hatch and 60/40 split fold-flat rear seats, you'll enjoy the cargo-swallowing versatility of a compact sport utility vehicle. So once in a while, those driving gloves can double as work gloves.



VELOSTER N instrument cluster



N Grin Control System – Custom Mode menu



Drive Mode and N steering wheel buttons



N 8-speed Wet Dual Clutch Transmission

In a world run by remote control, stay connected.

Hyundai's Bluelink® Connected Car System makes it easy to stay connected from wherever you are.¹ Simply download the MyHyundai app, and your smartphone becomes a remote control that lets you unlock your Veloster N's doors and start the engine before walking out the door.² With your Amazon Echo® or Google Home™ device, you can also use voice commands to set your car's cabin temperature from the comfort of your couch.³

Bluelink's Guidance package lets you search for addresses or points of interest on your smartphone, then download the driving directions to Veloster N's navigation system before you slip behind the wheel.⁴ Standard Apple CarPlay® and Android Auto™ also let your smartphone sync to Veloster N's large touchscreen display for seamless access to your contact lists, texts, calls, maps and navigation, music library and more.⁵

Then there's Bluelink Connected Care. Like all Bluelink packages, it's complimentary for your first three years and offers exceptional peace of mind.⁶ Visit HyundaiBluelink.com for more information on the features Bluelink puts at your fingertips.



Automatic Emergency Assistance

Bluelink Connected Care offers 24/7 SOS Emergency Assistance as well as Automatic Collision Notification that calls for help if you're in an accident where airbags deploy.⁷



On-Demand Diagnostics

Run vehicle diagnostics from your car's touchscreen, report issues at the press of a button and receive Monthly Vehicle Health Reports or maintenance reminders by email.



Car Finder

Our Car Finder smartphone app feature lets you navigate your way through crowded parking lots back to your Veloster N.



Remote Controls

Use your smartphone, your smartwatch or your home assistant device to remotely start your car's engine, unlock the doors, set the cabin temperature and more.



Destination Send-to-Car

Use your smartphone to find restaurants or points of interest that may not be updated on your vehicle's maps, then send the destination to Veloster N's navigation system.



Service Link

Conveniently schedule your Veloster N for service from the driver's seat or by using your MyHyundai smartphone app.

Bluelink



VELOSTER N

2.0L Turbo GDI
4-Cylinder Engine*

hp 275

lb-ft 260



Popular Features

- Available N 8-speed Wet Dual Clutch Transmission
- Active Sport Exhaust featuring pops and crackles
- Electronically Controlled Suspension
- N Corner Carving Differential (limited-slip differential with electronic control)
- N Light Sport Bucket Seats
- N-exclusive sport steering wheel, shift knob and instrument cluster
- Infinity® premium audio system with Apple CarPlay®/Android Auto™



19" alloy wheels



Large-bore dual exhaust outlets

MPG Estimates (City/Highway/Combined)⁹

22/28/25 MPG | 6-speed manual transmission

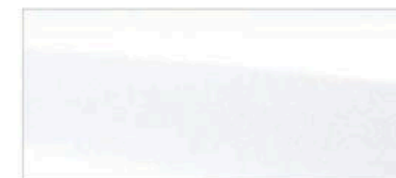
20/27/22 MPG | N 8-speed Wet Dual Clutch Transmission

VELOSTER N

Power & Handling	
275 hp/260 lb-ft, 2.0L Turbo GDI 4-cylinder engine	●
Active Sport Exhaust System	●
6-speed manual transmission with downshift rev-matching	●
N 8-speed Wet Dual Clutch Transmission (N DCT) with paddle shifters	○
Electronically Controlled Suspension	●
Multi-link rear suspension	●
N Grin Control System – Drive Mode Select	●
13.6" front and 12.4" rear ventilated brake rotors	●
N Corner Carving Differential	●
Exterior Features	
LED Daytime Running Lights	●
Automatic on/off headlights	●
LED low-beam headlights and LED taillights	●
N-specific body styling and rear underbody air diffuser	●
Large-bore dual exhaust outlets	●
Dual power heated side mirrors with turn signal indicators	●
Large 2-stage rear spoiler with integrated center brake light	●
19" Pirelli P Zero™ summer performance tires	●
Interior Features	
Proximity Key entry with push button start	●
4.2" color LCD multi-information display	●
Sequential shift light indicator	●
Rearview camera with dynamic parking guidelines	●
Tilt-and-telescopic steering wheel with cruise controls	●
N-exclusive sport steering wheel, shift knob and instrument cluster	●
Perforated leather-wrapped steering wheel	●
Automatic temperature control with auto-defogging	●
6-way adjustable driver's seat	●
N Light Sport Bucket Seats with black cloth/leatherette combination seating surfaces	●
60/40 split fold-flat rear seats	●

Interior Features	
Alloy sport pedals	●
Driver's auto-up window	●
N badged floor mats	●
Advanced Safety	
Forward Collision-Avoidance Assist	●
Lane Following Assist	●
Lane Keeping Assist	●
Driver Attention Warning	●
Blind-Spot Collision Warning	●
Rear Cross-Traffic Collision Warning	●
Audio & Connected Car Technology	
8" touchscreen navigation	●
Infinity® premium audio system with 8 speakers (including center channel and subwoofer)	●
Clari-Fi™ Music Restoration Technology	●
Bluetooth® hands-free phone system with voice recognition	●
Android Auto™ and Apple CarPlay®	●
SiriusXM Satellite Radio and HD Radio™	●
Bluelink® Connected Car System (3 years complimentary)	●
12V power outlet and dual USB charging outlets	●
	● Standard ○ Optional
Exterior Dimensions	
Wheelbase	104.3 in
Overall Length	167.9 in
Overall Width	71.3 in
Overall Height	54.9 in
Interior Dimensions	
Headroom – front / rear	38.1 / 35.9 in
Legroom – front / rear	42.6 / 34.1 in
Cargo Volume – rear seats up / down	19.9 / 44.5 cu ft
Total Interior Volume	109.8 cu ft

Exterior Colors



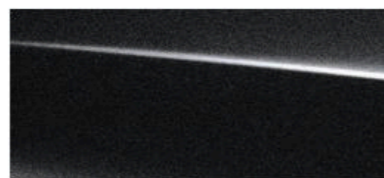
Lunar White



Performance Blue



Racing Red



Ultra Black

Interior Color



Black Cloth / Leatherette Combination

¹Bluelink Connected Care, Remote, and Guidance (factory-equipped navigation required) packages are complimentary for the first 3 years of ownership and require an active Bluelink subscription agreement subject to the Connected Services Terms and Conditions. Three-year term starts from the new vehicle date-of-first-use, is available for new vehicle purchases and leases, and is transferable to subsequent owners subject to the Terms and Conditions. Only use Bluelink and corresponding devices when safe to do so. Cellular and GPS coverage is required. Features, specifications and fees are subject to change. For more on details and limitations, visit HyundaiUSA.com or your authorized Hyundai dealer. ²Requires active Bluelink subscription with Remote package. Remote engine start requires vehicles equipped with push button start and a Dual Clutch Transmission. Remote climate control available on properly equipped models with fully automatic temperature control. Remote stop only available when in remote start mode. ³Amazon, Alexa and all related logos and motion marks are trademarks of Amazon.com, Inc. or its affiliates. Google Home is a trademark of Google Inc. ⁴Requires active Bluelink subscription with Guidance package. ⁵Apple CarPlay® is a registered trademark of Apple Inc. Android Auto™ is compatible with Android™ phones running Android 5.0 or higher. Android Auto may not be available on all devices and is not available in all countries or regions. Additional apps may be required. Android and Android Auto are trademarks of Google LLC. ⁶Requires active Bluelink subscription with Connected Care package. ⁷Bluelink agents will contact existing emergency service responders. ⁸Horsepower and torque figures with premium fuel. ⁹EPA estimates for comparison only. Mileage may vary. Your actual mileage will vary with options, driving conditions, driving habits and the vehicle's condition.



Hyundai Hope On Wheels®

Helping Kids Fight Cancer Since 1998



Hope makes every Hyundai better.

Each time we sell a Hyundai, a portion goes to Hyundai Hope On Wheels® to help find a cure for childhood cancer. Over the last 23 years, Hyundai Hope On Wheels has donated more than \$185 million. Hope is our greatest feature. And it comes standard on every Hyundai. For more information, please visit HyundaiHopeOnWheels.org.



America's Best Warranty

POWERTRAIN LIMITED WARRANTY

10 YEARS 100,000 MILES

NEW VEHICLE LIMITED WARRANTY

5 YEARS 60,000 MILES

ANTI-PERFORATION WARRANTY

7 YEARS UNLIMITED MILES

24/7 ROADSIDE ASSISTANCE

5 YEARS UNLIMITED MILES



Complimentary maintenance includes Hyundai-approved oil and oil filter changes (except for electric vehicles and fuel cell electric vehicles) plus tire rotations at normal factory-scheduled intervals for 3 years or 36,000 miles, whichever comes first. This offer valid only for new 2020-2022 Hyundai models purchased or leased on or after February 1, 2020. See your Hyundai dealer for further details and limitations.



Our commitment to Hyundai owners does not end with the transfer of keys. Wherever the road takes you, we've got your back with Hyundai Assurance, an umbrella of services and benefits that includes America's Best Warranty, 24/7 Roadside Assistance, innovative safety and car care features...and more.

See dealer for LIMITED WARRANTY details. Fuel economy estimated by EPA for comparison only. Mileage may vary. While the information contained in this brochure was correct at the time of printing, specifications and equipment can change. Feature comparisons based on competitor information available at the time of printing. No warranty or guarantee is being extended in this brochure, and Hyundai reserves the right to change product specifications and equipment at any time without incurring obligations. Some vehicles are shown with optional equipment. Specifications apply to U.S. vehicles only. Please contact your Hyundai dealer for current vehicle specifications. As part of Hyundai's commitment to a responsible environment, this brochure was printed using paper certified by the Forest Stewardship Council®. FSC® certification helps ensure that the highest social and environmental standards are met in the making of the paper we use, contributing to conservation, responsible management and community-level benefits for people near the forests.

