

CONTENTS

PERSONALIZATION

LOCATE A RETAILER

BUILD YOUR OWN

NEW JAGUAR E-PACE 2018



THE ART OF PERFORMANCE





THE ART OF PERFORMANCE

Every day we push performance to its limit. Our performance. Our vehicles' performance. We innovate, we engineer, we design. We master rules and then break them. Only to push further. Past the limits of convention. This is when performance becomes art. Jaguar. The Art of Performance.





THE NEW JAGUAR E-PACE

The new E-PACE is Jaguar's first compact SUV. With a driver-focused cockpit sitting at the heart of a family-focused interior, the new E-PACE takes the rewarding Jaguar driving experience and adds everyday practicality. There's never been a compact SUV like this before.

CONTENTS

INTRODUCTION		SPECIFICATIONS	
Introducing The New Jaguar E-PACE	06	Step 1 - Choose your Model	40
DESIGN		Step 2 - Choose your Engine	44
Exterior	09	Step 3 - Choose your Specification Package	46
Interior	10	Step 4 - Choose your Exterior	48
PERFORMANCE		Step 5 - Choose your Interior	56
Ingenium Engines	12	Step 6 - Choose your Options and Jaguar Gear	64
Performance Technology	15	TECHNICAL DETAILS	72
TECHNOLOGY		SPECIAL VEHICLE OPERATIONS	74
Infotainment	17	THE WORLD OF JAGUAR	76
Connectivity	18		
Audio	22		
Driver Assistance	24		
Efficient Technologies	26		
DRIVER ASSISTANCE	28		
PRACTICALITY			
A Place For Everything	32		
Practically Designed	35		
Take Your Whole World With You	36		

VEHICLE SHOWN LEFT: E-PACE FIRST EDITION IN CALDERA RED
 VEHICLES SHOWN ARE FROM THE JAGUAR GLOBAL RANGE. SPECIFICATIONS, OPTIONS AND AVAILABILITY WILL VARY BETWEEN MARKETS AND SHOULD BE VERIFIED WITH YOUR LOCAL JAGUAR RETAILER



INTRODUCING THE NEW JAGUAR E-PACE

With its sculpted hood and muscular rear haunches, the new E-PACE is a dynamic, agile SUV with the lines of a coupe. The modern interior is distinctly Jaguar with significant interior storage space. It also features our advanced suite of infotainment and driver technologies. The new E-PACE is the compact SUV as only Jaguar could have imagined it.

FIT YOUR LIFE INSIDE

The E-PACE has plenty of space for everything you need. With deep center console storage space and sculpted door bins, the E-PACE is highly versatile. For simple, practical loading, the E-PACE's cargo space is up to 4.3 feet wide, while the optional powered gesture tailgate¹ lets you open the trunk hands-free. Making it easy to enjoy your favorite activities - from cycling to swimming - the wearable and waterproof optional Activity Key allows you to keep your car key stored securely in the car. Even when you're heading off on a weekend away you can take everything you need thanks to the E-PACE towing capacity of up to 3,968 lbs. See pages 34-39 for details.

PERFORMANCE TECHNOLOGY

Jaguar's world-renowned performance technology helps you take everything in your stride. To give you more confidence and improved performance across an even wider range of conditions, our intuitive All Wheel Drive system* transfers torque between the front and rear wheels as driving conditions dictate. For increased agility, Active Driveline² allows 100 percent of rear axle torque to be distributed to the outside rear wheel when cornering. Delivering enhanced dynamics and refinement, the E-PACE has a fully independent suspension system with a sophisticated multi-link rear suspension design while Torque Vectoring by Braking** is designed to deliver sharper turning and more consistent road holding.

HEAD-TURNING GOOD LOOKS

For a striking on road presence, sleek LED headlights and signature LED rear lights are standard. To enhance the E-PACE appearance even further, 21" alloy wheels³ are also available as an option. The style extends to the driver-focused interior, which features premium quality materials. See pages 9-11 for details.

INGENIUM ENGINES

A choice of two gas Ingenium engines deliver refined and responsive driving. Engines include the 2.0 liter 4-cylinder 246HP All Wheel Drive (AWD) Turbocharged Gas. For increased performance, there's the 2.0 liter 4-cylinder 296HP All Wheel Drive (AWD) Turbocharged Gas that can reach a top speed of 152 mph with 0-60 mph acceleration in 5.9 seconds⁴. See pages 12-13 for details.



CONNECTED ON THE GO

The E-PACE offers a range of features to make your life more connected on your trips, to ensure you and your passengers are linked to the world outside. Making it easy to use apps from your phone on the Touchscreen**, the Smartphone Package is available as an option. With up to five USB sockets in the car, it's simple for every occupant to keep devices fully charged. See pages 22-23 for details.

DRIVER ASSISTANCE

Providing reassurance and information, standard driver assistance features include Lane Keep Assist, Driver Condition Monitor, Rear View Camera and Front and Rear Parking Aids. For additional assistance, the E-PACE offers a wealth of optional systems including Blind Spot Assist and Surround Camera System**. Helping to distinguish objects more easily, LED headlights produce a highly focused beam with a higher quality of light. See pages 26-27 and 30-32 for details.

*This feature is not a substitute for safe and attentive driving, nor can it overcome all extreme circumstances. Please consult the owner's manual or your local authorized Jaguar Retailer for more details. **These features are not a substitute for driving safely with due care and attention and will not function under all circumstances, speeds, weather and road conditions, etc. Driver should not assume that these features will correct errors of judgment in driving. Please consult the owner's manual or your local authorized Jaguar Retailer for more details. ¹Included within HSE Specification Package. ²Only available with the 2.0 liter 246HP engine. ³Only available with Adaptive Dynamics.

VEHICLE SHOWN: E-PACE R-DYNAMIC SE IN YULONG WHITE WITH OPTIONAL EQUIPMENT

⁴Always obey local speed limits.



DESIGN EXTERIOR

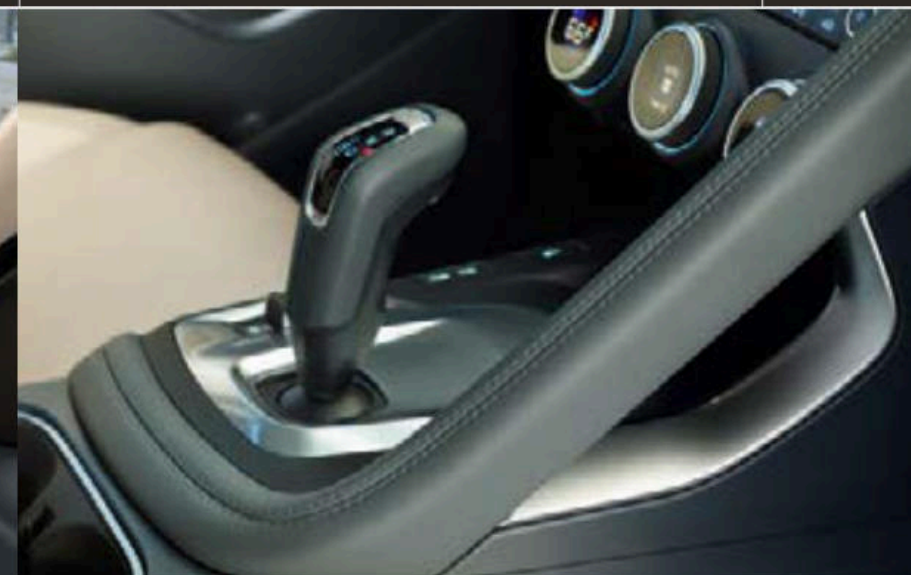
The Jaguar E-PACE looks unmistakably sporty, with its bold honeycomb mesh grille framed by LED headlights with signature 'J' blade¹.

The dynamic roofline blends with a spoiler that sits over a steeply raked rear window to give the E-PACE a distinctive profile and the lines of a coupe. For convenience with a touch of style, puddle lights¹ in the door mirrors illuminate the ground with an eye-catching Jaguar and cub design – adding a sense of occasion

each time you unlock the vehicle. Optional 21" alloy wheels² further underscore the sporting character of the E-PACE.

At the rear, full LED tail lights provide a truly distinctive, night time signature. Muscular haunches give an assertive stance, and the wide tailgate has been designed to allow easy access to the large and versatile cargo space.

¹Standard on S, SE and HSE Specification Packages. ²Standard on HSE Specification Package.
VEHICLE SHOWN: E-PACE S IN BORASCO GREY WITH OPTIONAL EQUIPMENT



INTERIOR

In the E-PACE every component you can see and touch has been meticulously designed to deliver a refined, tactile experience. The cockpit wraps around the driver, and the SportShift Selector sits at your fingertips. A 3-spoke leather steering wheel incorporates key controls for ease of use. To enhance the sportier feel, the R-Dynamic steering wheel features Satin Black gearshift paddles.

It's the little design details that give the E-PACE its unique character, like the exclusive Jaguar and cub design hidden in the corner of the front windshield. There's also a subtle Jaguar print in the glovebox and the center console. Complementing this, HSE models also feature beautifully detailed animal print seat labels.

The interior rear view mirror, has a frameless design. There's a front passenger grab handle on the side of the console. Choose the optional fixed panoramic glass roof and flood the E-PACE interior with light enhancing the airy, spacious feeling. Bringing the outside in, it gives everyone superb views of the sky.

INTERIOR SHOWN: E-PACE S WITH OPTIONAL LIGHT OYSTER WINDSOR LEATHER SEATS WITH EBONY/LIGHT OYSTER INTERIOR AND LIGHT OYSTER HEADLINING

PERFORMANCE INGENIUM ENGINES

From power and sheer driving pleasure to refinement, there is a choice of two Ingenium gas engines available for the Jaguar E-PACE. Both engines are equipped with Stop/Start technology and smart regenerative charging; this feature harvests kinetic energy from braking to charge the battery for maximum economy, especially during city driving.

These low friction, all-aluminum engines have stiff cylinder blocks and twin balancer shafts to ensure inherently low levels of vibration, for smooth day-to-day performance. Intelligent, electronically controlled, adaptive engine cooling only engages when required - helping minimize fuel consumption and CO₂ emissions.

TRANSMISSION

To ensure that you are in the optimum gear, maximizing fuel efficiency and acceleration, the Jaguar E-PACE 9-speed Automatic Transmission has nine closely spaced ratios. Gear changes are almost imperceptible and shift schedules intelligently adapt to your driving style.

ENGINES

The intelligent Continuously Variable Valve Lift (CVVL) system varies the extent to which inlet valves are opened, reducing engine pumping losses. This lets the engine 'breathe' with maximum efficiency, optimizing power and torque. CVVL works in combination with dual independent Variable Cam Timing (VCT) for ultimate operating flexibility, resulting in optimized power across the rev range. The twin scroll turbocharger is fed by an integrated exhaust manifold which increases the transfer of energy to the turbine - significantly reducing turbo lag and improving engine response.

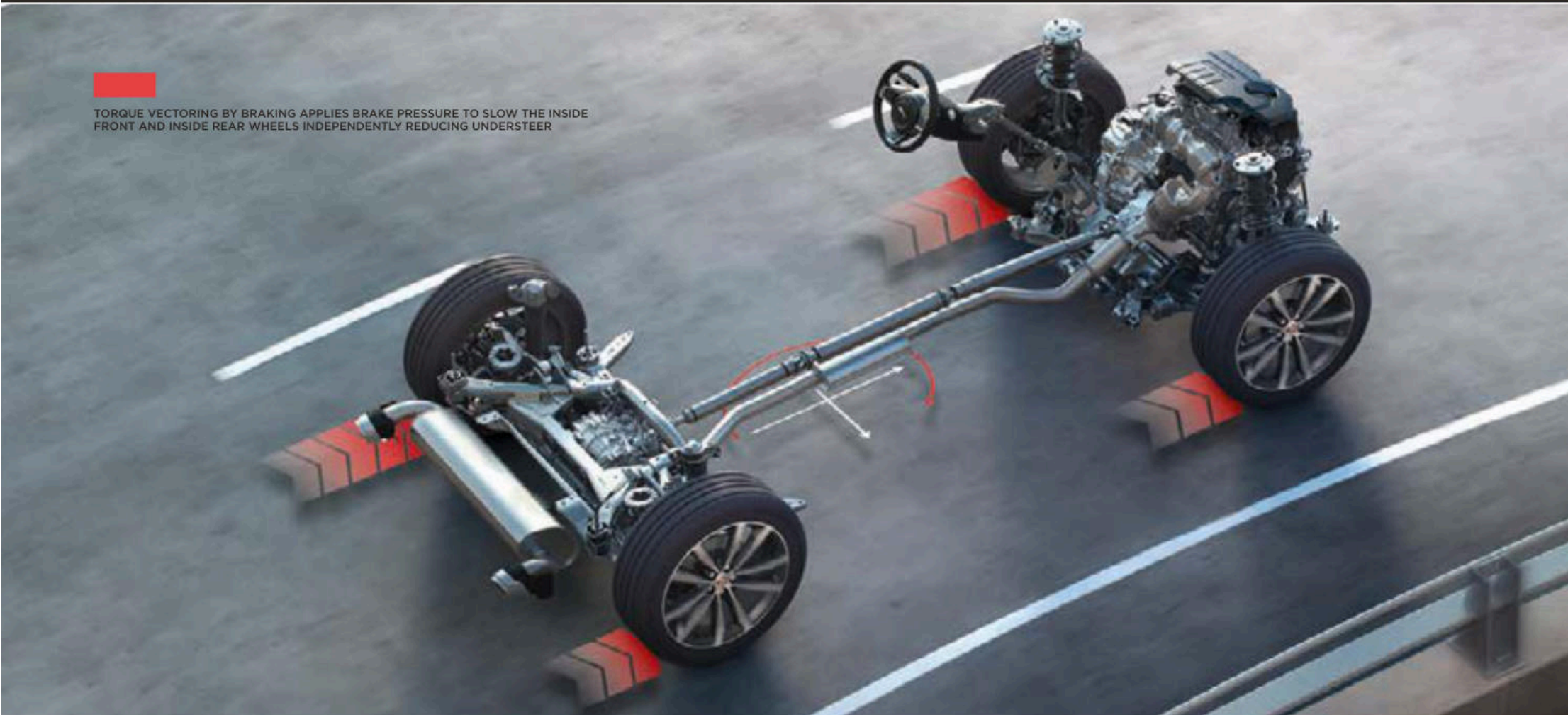
P250 AWD
2.0L | 4-Cylinder | Turbocharged
246HP | 269 lb-ft
 Optimized for driveability.

P300 AWD
2.0L | 4-Cylinder | Turbocharged
296HP | 295 lb-ft
 Optimized for top of the range performance.

- Featuring upgrades to the boosting system, it builds on the architecture of the 2.0 liter 4-cylinder 246HP Turbocharged Gas engine.
- The uprated turbocharger features a high flow compressor wheel delivering 26 percent more air, enabling a higher peak power output.
- The twin-scroll turbocharger features ceramic ball-bearings which reduce friction and improves transient response.



TORQUE VECTORING BY BRAKING APPLIES BRAKE PRESSURE TO SLOW THE INSIDE FRONT AND INSIDE REAR WHEELS INDEPENDENTLY REDUCING UNDERSTEER



PERFORMANCE TECHNOLOGY

ALL WHEEL DRIVE

For performance across an even wider range of conditions, the All Wheel Drive (AWD) system intelligently controls torque distribution between front and rear axle via an electronically controlled multi-plate clutch, which is located in front of the rear differential. Drive torque is distributed across the front and rear axle to fully utilize the available traction from all four tires. On slippery surfaces, such as wet grass and snow, torque can be balanced between the front and rear wheels to enhance traction. In extreme conditions where only the front or rear wheels have traction, up to 100 percent of engine torque can be distributed to the opposite axle for optimum grip. The AWD system combines with Electronic Traction Control (ETC) to deliver a sure footed driving experience in even the most challenging situations*.

ACTIVE DRIVELINE

Active Driveline¹ technology is designed to deliver even greater levels of traction, stability and composure in challenging conditions. While the system is able to fully disconnect drive to the rear wheels in relaxed driving conditions to improve efficiency, Active Driveline can seamlessly reconnect drive to the rear of the car within 300 milliseconds when the requirements for AWD are met. Where driving conditions require it, both rear clutches are fully locked to provide the same effect as a traditional locking rear differential – designed to maximize the car's stability in order to increase capability.

Active Driveline also optimizes traction and agility and provides rear-wheel drive handling characteristics by allowing up to 100 percent of rear axle drive torque to be distributed to either rear wheels according to available grip. The hydraulically controlled multi-plate wet clutches, act upon both the rear drive shafts. The clutches are independently controlled and supply optimal torque to each rear wheel based on measuring wheel speeds, throttle position, steering angle and vehicle rotation. So you always feel in control, a dedicated display on the Touchscreen lets you know what's happening.

ALL SURFACE PROGRESS CONTROL

All Surface Progress Control (ASPC) is a state-of-the-art system that enables you to set and maintain a steady speed in challenging conditions such as slippery surfaces such as: mud, wet grass, snow and dirt roads. Operating like a conventional cruise control system, it functions between 2.2 mph and 18.6 mph, enabling you to maintain full concentration on the road ahead*.

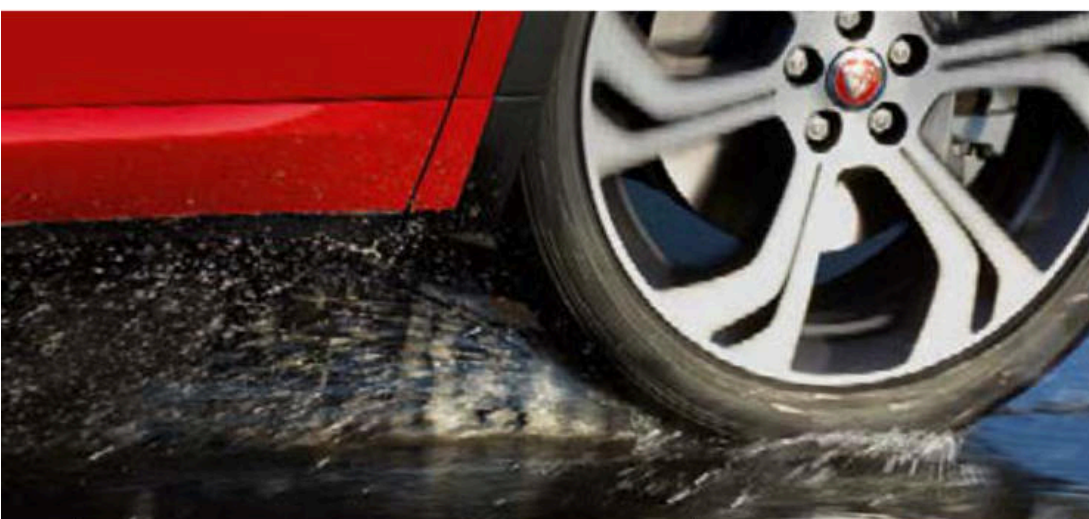
LOW TRACTION LAUNCH

Providing you with optimum torque control when you start from a standstill, Low Traction Launch enhances capability in slippery conditions like wet grass and snow. The system remains active until the car reaches 18.6 mph – then the E-PACE seamlessly blends back into the selected driver mode*.

CHASSIS AND DYNAMICS

The chassis of the E-PACE has been developed to deliver agile and refined on road dynamics. Aluminum chassis components are used to improve suspension performance by increasing stiffness and reducing unsprung mass. To increase ride comfort the E-PACE has a fully independent suspension system with a multi-link rear suspension design. Reducing understeer and delivering increased agility through even the tightest corners, Torque Vectoring by Braking is designed to provide controlled independent braking on the individual inside front and rear wheels*.

LOW TRACTION LAUNCH



DYNAMIC MODE AND CONFIGURABLE DYNAMICS



*These features are not a substitute for driving safely with due care and attention and will not function under all circumstances, speeds, weather and road conditions, etc. Driver should not assume that these features will correct errors of judgment in driving. Please consult the owner's manual or your local authorized Jaguar Retailer for more details.

¹Standard with P300 engine.

VEHICLE SHOWN: E-PACE FIRST EDITION IN CALDERA RED



TECHNOLOGY INFOTAINMENT

Delivering a wealth of information and entertainment, every E-PACE is equipped with our Jaguar InControl® infotainment system, Touch Pro. It features intuitive and advanced integrated technologies to ensure everyone can make the most of their trip*.



TOUCH PRO

The standard 10" Touchscreen at the heart of the center console supports swipe and pinch gestures and delivers our richest ever audio-visual entertainment. To enhance the in-car experience, Touch Pro offers customizable homescreens and fast response times as well as voice control. Multi-tasking is also made easy thanks to the Interactive Side Panel. On S, SE and HSE models, Touch Pro is further enhanced by Navigation Pro, Pro Services and Wi-Fi Hotspot.



INTERACTIVE DRIVER DISPLAY

The optional 12.3" high-definition Interactive Driver Display¹ can receive and project a vast amount of driving information, entertainment and driver assistance data including navigation, phone and media. Its high resolution ensures the utmost clarity and its refined processing engine delivers smooth moving pin graphics. To help you find your way more easily, Navigation Pro enables you to display fullscreen navigation with 3D mapping^{**}.



HEAD-UP DISPLAY

Minimizing distractions and the need to take your eyes off the road, Head-up Display is an option that presents key vehicle data such as your speed, gear position and navigation directions on the windshield. It features crystal clear full-color graphics in high resolution, enabling you to see all driver inputs and information with ease[†]. It can display important information from Touch Pro including phone and media information such as the name of the track you might be listening to. The feature can be turned on and off dependent on driver preference.

*Do not use Jaguar InControl® features under conditions that will affect your safety or the safety of others. Driving while distracted can result in loss of vehicle control. Do not operate, adjust or view the navigation or multimedia systems under conditions that will affect your safety or the safety of others. Only use mobile phones, and other devices, even with voice commands, when it is safe to do so. [†]These features are not a substitute for driving safely with due care and attention and will not function under all circumstances, speeds, weather and road conditions, etc. Driver should not assume that these features will correct errors of judgment in driving. Please consult the owner's manual or your local authorized Jaguar Retailer for more details. ^{**}Included within HSE Specification Package.

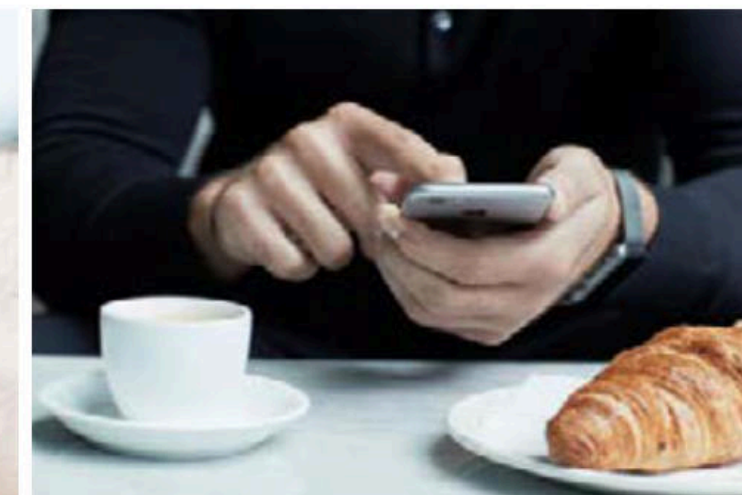
INTERIOR SHOWN LEFT: E-PACE S WITH OPTIONAL LIGHT OYSTER WINDSOR LEATHER SEATS WITH EBONY/LIGHT OYSTER INTERIOR AND LIGHT OYSTER HEADLINING

CONNECTIVITY

Jaguar InControl® is our suite of standard and optional features that connects you to your vehicle and links you seamlessly with the outside world. There are a range of packages and options available to choose from.

With a selection of apps, even when you're away from your car, some of the InControl features stay with you, making sure the Jaguar experience is more enjoyable than ever*.

Go to jaguarusa.com/incontrol to activate your account.



STANDARD FEATURES

PINPOINT TOUCH CONTROL*

Pinpoint touch control allows you to interact with information swiftly. The Touchscreen responds in the same manner as a smartphone or tablet computer, providing multi-touch gestures such as pinch to zoom and swipe.

PERSONALIZED HOMEPAGE*

You can set up your homescreens the way you want them. With over 60 shortcuts and widgets, you can customize your system around the features you use most.

INTERACTIVE SIDE PANEL*

A choice of side panels means you can multi-task. For example, your main screen area can be used for navigation, while the side panel provides phone controls. Simply swipe up and down to switch between multiple panels.

MULTIMEDIA*

Enjoy a range of multimedia features on the Touchscreen. Connect your device and see details of playlists and music displayed by artist, album and genre. Create a list of songs you want to play and add to the line up at any time.

ENHANCED PHONE INTERFACE*

Making it easier, you can call a favorite contact with a single touch. Additional functionality includes direct access to voicemail, conference calling and homescreen integration.

VOICE RECOGNITION SYSTEM*

So you can complete tasks without taking your eyes off the road, the E-PACE offers intelligent voice recognition. For example, 'Tune to 97.9' or 'Call home'.

REMOTE¹

Remote provides information on your vehicle and enables you to interact with it remotely. Compatible with most smartphones, Android Wear™ or the Apple Watch®, this service includes:

- Remote Lock/Unlock – Lock or unlock your doors remotely. Simply press the 'lock' button on the Vehicle Security screen of the Remote smartphone app to single lock the doors and fold in the side mirrors². Press the 'unlock' button to open your vehicle, unfold the side mirrors, turn on the dipped headlights and cause the hazard lights to flash twice to help you locate your vehicle.
- Remote Climate – Prepare your E-PACE in advance by pre-heating or pre-cooling the cabin, so that you and your passengers are comfortable from the moment you step inside.
- Beep/Flash – This feature turns on your Jaguar's hazard lights, dipped headlights and sounds an audible alert to help you locate your vehicle.

- Journeys – This opt-in feature can automatically record your trip history including your route and mileage statistics. This information can be exported by email to use for expense reporting and can be imported to a spreadsheet.

- Vehicle Status Check – Check current fuel level and range, and status of door and window position and locks. See the last parked location of the vehicle and find your way back to it with on-foot directions.

Jaguar Optimized Assistance – You can make a direct call to the Jaguar Assistance team by pressing the button on the overhead console or from the Assistance screen within the InControl Remote smartphone app.

SOS Emergency Call – Emergency services will be automatically notified if the airbags are deployed in an accident.

*Do not use Jaguar InControl® features under conditions that will affect your safety or the safety of others. Driving while distracted can result in loss of vehicle control.

¹Remote contains subscription services that can be extended after the initial term advised by your Jaguar Retailer. Please contact your authorized Jaguar Retailer for more details. ²When power fold mirrors are specified.

InControl Apps will need to be downloaded from the Apple/Play Store.

InControl features, options and their availability remain market dependent – check with your Jaguar Retailer for local market availability and full terms. Information and images displayed in relation to the InControl technology, including screens or sequences, are subject to software updates, version control and other system/visual changes depending on options selected. Mobile network connectivity cannot be guaranteed in all locations.



OPTIONAL FEATURES

NAVIGATION PRO¹

Standard on S, SE and HSE, Navigation Pro allows you to save your favorite places, use pinch and zoom gestures for simple map exploration and display a choice of either 2D or 3D crystal clear map graphics. Navigation Pro functionality is further enhanced by the Connect Pro Package*.

CONNECT PRO PACKAGE^{1 2}

Connect Pro, which is included with Navigation Pro, consists of a 4G Wi-Fi Hotspot** and Pro Services. It's designed to enhance your in-car and out-of-car experience, ensuring you and your passengers enjoy the journey while remaining connected to the world*.

4G WI-FI¹

The 4G Wi-Fi Hotspot provides in-car access to the Internet, enabling up to eight wireless devices to be used simultaneously in the car. Passengers can connect through the vehicle's wireless network to surf, work, update social media and stay entertained throughout the trip**.

PRO SERVICES¹

- Real Time Traffic Information – Uses live traffic data feeds to give you the most accurate picture of what the traffic is like on the way to your destination*.
- Online Search – Wherever you are, you can search the surrounding area for places of interest. The system can access expert destination information, travel tips and inspiration as well as online travel reviews of the local area*.
- Planning Routes and Door-to-Door Routing – Before setting off, use the Route Planner app or online to search, save locations or set your destination. The app uses the Cloud to send your destination automatically to your vehicle's navigation screen. Once you've parked, the Route Planner app will guide you to your destination – a true door-to-door experience which includes public transportation options*.

- Share ETA – You can share your estimated time of arrival so your selected contact(s) will know exactly when you will arrive, as calculated by the navigation guidance system. If you're running late, Share ETA can then send automatic updates via text messages or email, without any further action from you*.
- Satellite View – When you want to get the context of your surroundings from overhead, simply switch to satellite view*.
- Commute Mode – Allows the system to learn your commutes and automatically advises you of the expected travel time based on live and historical traffic movements without you having to input a destination. The system learns the routes you take for a given destination and then advises which of those is the quickest. The feature can be turned on and off dependent on driver preference.
- Parking Service – As you approach your destination, you can see where parking is available. Simply tap on the parking and the navigation system updates to direct you to it.
- Online Routing – While you're on your way to a destination the system monitors live traffic conditions and takes into account typical traffic patterns for that time of day, keeping you on the optimum route.
- Fuel Prices – When you're going to fill up, the Fuel Price service not only finds gas stations along your route, it also enables you to compare fuel prices so you can keep your costs down.

SMARTPHONE PACKAGE¹

By screen sharing with the E-PACE infotainment system, the optional Smartphone Package helps you stay connected to your smartphone even while in the car. Featuring Jaguar InControl Apps technology, the Smartphone Package allows vehicle-optimized apps on your Android™ or Apple® smartphone to be controlled through the Touchscreen, including your contacts, calendar and music player, via a USB cable. You can also download third-party apps offering a vast range of services. Applications include:

- Spotify³ – Access a library of more than 30 million songs with this seamlessly integrated app. Featuring all the same intuitive functionality as the Spotify smartphone app, you can search songs, stations and recommendations, create playlists and access your music in offline mode. Simply log in using your existing Spotify Free or Spotify Premium account.
- Tile⁴ – Helps you find lost or misplaced items in seconds. Attach a tiny Bluetooth tracker Tile to your keys, wallet or bag. The easy-to-use Tile app can then help you find these items should they be misplaced. The app is accessible any time through your vehicle's Touchscreen, allowing you to make sure you have everything you need with you, before you set off on your journey*.



*Do not use Jaguar InControl® features under conditions that will affect your safety or the safety of others. Driving while distracted can result in loss of vehicle control.
**The Wi-Fi Hotspot is intended for passenger use only. InControl features may require an additional subscription with separate terms and conditions.

¹Standard on S, SE and HSE Specification Packages.
²Certain features require an appropriate micro SIM with a suitable data contract, which will require further subscription after the initial term as advised by your Jaguar Retailer.
³Please check App Store and Google Play for availability.
⁴Bluetooth tracker tiles must be purchased separately. 2016 Tile Inc. and the Tile design are trademarks of Tile, Inc. iPhone® is a registered trademark of Apple Inc., registered in the US and other countries. Please ensure iPhone compatibility is reviewed with your local Jaguar Retailer.

AUDIO

A vehicle's cabin is the ideal place within which to experience your personal choice of music and the Jaguar E-PACE has the option of three different audio systems to bring your music to life:



JAGUAR SOUND SYSTEM

Excellent acoustic range through six speakers.

MERIDIAN™ SOUND SYSTEM¹

Great definition, crystal clear highs and full, deep bass – delivered through the careful arrangement of 11 speakers including a dual channel subwoofer.

MERIDIAN SURROUND SOUND SYSTEM

All the fullness and clarity of a live performance delivered through an arrangement of 15 front, side and rear speakers including a dual channel subwoofer – seamlessly brought together using Trifield™ technology. Exclusive to Meridian, Trifield perfectly blends the center and surround channels with left and right channels ensuring an optimum, consistent sound experience for each passenger.

MERIDIAN

Formed in 1977 in Cambridgeshire, England, Jaguar's audio partner Meridian has pioneered many firsts including active speakers and the world's first digital surround sound processor. Meridian's audio technology input has helped ensure that the Jaguar E-PACE is one of the most superb spaces. Meridian Cabin Correction technology was utilized to analyze cabin shape, acoustics and resonance characteristics in order to help remove unwanted sounds. The advanced algorithm ensures that the rhythm, punch and timing of any piece of music are heard precisely how the artist intended, providing a consistently exceptional quality audio experience for all passengers in the vehicle.



DIGITAL SIGNAL PROCESSING

Brings all elements of the audio system together as one, for performance that would otherwise require significantly larger speakers.



MERIDIAN CABIN CORRECTION

The advanced algorithm of Meridian's Cabin Correction tailors the sound experience to the precise acoustics of the E-PACE interior.



MERIDIAN DIGITAL DITHER SHAPING

To maintain the quality of musical recordings, they are converted into a common digital format. Meridian Digital Dither Shaping ensures that digital signal conversions are made smoothly and seamlessly, preserving the finest details of the audio performance. The result is authentic musical conversion, evoking the emotions of the original recording.



TRIFIELD

Exclusive to Meridian, Trifield blends the center and surround channels seamlessly with left and right channels, delivering a consistent, concert-like experience for all occupants.

	UNIQUE MERIDIAN TECHNOLOGY	SPEAKERS	WATTS
JAGUAR SOUND	N/A	6	125
MERIDIAN™ SOUND		11	380
MERIDIAN™ SURROUND SOUND		15	825

¹Standard on SE and HSE Specification Packages.

Meridian is a registered trademark of Meridian Audio Ltd. Trifield and the "three fields" device is a trademark of Trifield Productions Ltd. Features and their availability may differ by vehicle specification.

DRIVER ASSISTANCE

MAKING DRIVING EASIER

From negotiating city traffic or the highway, to providing additional assistance for you and your passengers, there's a wealth of innovative technologies available; either as standard, optional or as part of an optional package. Whichever you choose, you'll find every single feature has been designed and engineered to heighten your enjoyment of the vehicle.

Search 'Jaguar E-PACE Driver Assistance' for more details.



Adaptive Cruise Control with Queue Assist



Rear Traffic Monitor



360° Surround Camera

STANDARD FEATURES

- **Emergency Braking** (see page 28)
- **Lane Keep Assist** is designed to detect when your vehicle is unintentionally drifting out of your lane, and to gently steer you back*.
- **Driver Condition Monitor** is designed to detect if you're starting to feel drowsy and to give you an early warning when you need to take a break*.
- **Cruise Control and Speed Limiter***
- **Front and Rear Parking Aids***
- **Rear View Camera***

DRIVE PACKAGE¹

Making trips more relaxing. The Drive Package includes:

Adaptive Cruise Control with Queue Assist is designed to keep your vehicle a set distance from the one in front should it slow or stop when you're cruising on the highway or travelling in slow-moving traffic. Should the vehicle in front stop completely, your vehicle will come to a smooth halt. Once the traffic moves, simply touch the accelerator and Adaptive Cruise Control will resume following the car in front. The system can be activated from 9.9 mph up to highway speeds*.

High-speed Emergency Braking is designed to detect when a potential frontal collision with another vehicle may occur and to display a forward alert to warn the driver to brake. If the driver doesn't react, the car will apply the brakes in order to help reduce the severity of the possible impact*. High-speed Emergency Braking is ready and active from 6 mph to 99 mph**.

Blind Spot Assist alerts you to vehicles in, or quickly approaching, your blind spot. When a vehicle is detected, a small warning light will illuminate in the corresponding side mirror. When a rapid approaching vehicle is detected the warning light will flash to highlight potential danger. If you continue to commence changing lanes, this system is designed to provide a gentle steering torque – to guide your car away from the approaching vehicle*.

PARK PACKAGE² ³

The Park Package enables you to park and maneuver more easily in and out of tight spaces and into traffic that is obscured by buildings or other vehicles. It features:

Rear Traffic Monitor is particularly useful when reversing out of a parking space. The system is designed to warn you of vehicles, pedestrians or other hazards approaching from either side of your vehicle. It will alert you with both audio and visual warnings so you know what's behind you even when the view is obstructed*.

Park Assist makes parallel and perpendicular parking easier than ever by steering your vehicle into a suitable space. You just have to select the appropriate gear and control the vehicle speed with the brake and accelerator pedals. Graphics and notifications guide you through the maneuvers. Park Assist is also designed to steer you out of a space, taking all of the stress out of parking*.

360° Parking Aid gives you added confidence when maneuvering in tight spaces. Sensors located around the car are automatically triggered when Reverse is selected, or can be manually activated, with a graphic appearing on the Touchscreen showing an overhead view of the vehicle. As you park, the Touchscreen display and audio feedback indicate how close you are to obstacles*.

OPTIONAL FEATURE

360° Surround Camera³ uses four digital cameras placed around the vehicle, providing a 360° overhead view on the Touchscreen. With the capacity to display several different views at the same time, this helps with various maneuvers from parking by a curb, to getting in and out of tight spaces. The integrated cameras can also provide assistance when towing*.

*These features are not a substitute for driving safely with due care and attention and will not function under all circumstances, speeds, weather and road conditions, etc. Driver should not assume that these features will correct errors of judgment in driving. Please consult the owner's manual or your local authorized Jaguar Retailer for more details.

**Always follow local speed limits.

¹Standard on SE and HSE Specification Packages. Not available on Standard model. ²Standard on S, SE and HSE Specification Packages. ³Not available on Standard model.

VEHICLES SHOWN: E-PACE R-DYNAMIC SE IN YULONG WHITE WITH OPTIONAL EQUIPMENT



CONTENTS

PERSONALIZATION

LOCATE A RETAILER

BUILD YOUR OWN

EFFICIENT TECHNOLOGIES

SUSTAINABLE CONSTRUCTION

Jaguar Land Rover is committed to producing vehicles that use more sustainable materials, produce less waste and use fewer natural resources as part of our approach to sustainability excellence. The E-PACE development process has included a full life cycle assessment and has been designed to be 85 percent recyclable/re-usable and 95 percent recoverable at the end of the vehicle's life.

Recycled materials have been used in the E-PACE wherever possible. Each car contains up to 22 lbs of recycled plastics, which is the equivalent of 769 small plastic water bottles. The use of recycled material in the E-PACE means that approximately 6,290 tons of plastic are diverted away from landfills over its entire lifecycle. Parts containing recycled plastics include the floor console base, wheel arch liners, and electrical box covers.

ENGINE MANUFACTURING CENTER

Jaguar Land Rover's Engine Manufacturing Center, where all of the E-PACE engines are developed, has been built to the highest environmental standard (BREEAM Excellent) and features the largest rooftop solar panel installation in the UK. Comprising 22,600 individual panels, which are capable of providing up to 6.2MW (enough energy to power 1,600 homes), the panels generate more than 30 percent of the site's energy, reducing the plant's CO₂ footprint by over 2,400 tons per year.

ADVANCED AERODYNAMICS

The E-PACE streamlined shape navigates air around the rear wheels to reduce turbulence. The smooth underfloor has been honed through exhaustive testing to perfect airflow efficiency.

Helping the E-PACE cut through the air and improve fuel efficiency, lower bumper intakes optimize airflow past the front wheels, by feeding air to the inner wheel arch from ducts in the front spoiler. In the upper and lower front grille, two intelligent Active Vanes open when necessary to let in cool air, but whenever possible they shut.

To reduce drag, which in turn reduces CO₂ emissions, an aero blade below the rear bumper helps redirect air away from the rear of the car. It also helps clean your rear windshield and lights.

ECO MODE

Eco Mode encourages fuel-efficient driving by reducing throttle sensitivity, selecting more economical engine mapping. It is designed to help reduce fuel consumption by minimizing the energy demands placed on the engine by climate control and audio systems. A display on the Touchscreen provides vehicle data and driving tips.



INTERIOR SHOWN: FEATURES ECO MODE

DRIVER ASSISTANCE

Designed with safety in mind, the E-PACE has been engineered to include a wealth of features designed to provide protection to you and your passengers, but to also provide the driver with assistance when needed. Sure-footed All Wheel Drive (AWD) capability is designed to help you stay planted on the road, in various weather conditions*.

Search 'Jaguar E-PACE Driver Assistance' for more details.

Dynamic Stability Control monitors the E-PACE dynamic behavior, intervening to optimize vehicle stability. DSC is designed to reduce engine torque and to apply braking to the appropriate wheels to correct the direction of travel by counteracting understeer or oversteer*.

Electronic Traction Control optimizes traction and stability by controlling wheel spin. This system is designed to reduce torque to the spinning wheel, then to apply braking to the wheel, if required*.

Engine Drag Torque Control mitigates the chance of wheel lock-up caused by strong engine braking in slippery conditions. It acts by briefly increasing torque to the driven wheels as appropriate.

Hill Start Assist is designed to help prevent the vehicle from rolling backwards as you pull away on an incline*.

Cornering Brake Control automatically varies the braking force to each wheel when the vehicle's brakes are applied around a corner and the limit of grip is reached. The system is designed to prevent the vehicle's wheels from locking up and skidding in this event through varying the braking force applied to each wheel*.

Roll Stability Control is integrated with Dynamic Stability Control to help reduce the possibility of rollover, while providing agility and ability to steer around obstacles. It monitors the vehicle motion and cornering forces to detect any potential risk of rollover. When risk is detected, braking is applied to the outside front wheel to help reduce forces which contribute to rollover*.

Emergency Brake Assist understands when you apply the brakes quickly but without the necessary force to improve stopping performance. It therefore boosts the brake pressure through the Anti-lock Braking System pump to provide braking assistance. To help reduce the risk of a foreseeable collision, the Emergency Stop Signal System automatically activates the hazard warning lights during emergency braking*.

Anti-lock Braking System allows the vehicle to maintain traction with the road surface while braking and helps prevent wheels from locking - thereby retaining the vehicle's ability to steer. The system helps to shorten the braking distance.

Electronic Brake-force Distribution automatically varies the braking force to each axle in order to minimize stopping distance, while still maintaining stability and the vehicle's ability to steer.

Emergency Braking can help prevent foreseeable collisions with other vehicles or pedestrians. If a potential frontal collision is detected, a warning is displayed giving you time to take action. A camera at the front of the vehicle monitors at speeds from 3.1 mph to 49.7 mph for frontal collisions and 3.1 mph to 37.2 mph for pedestrians. If a collision is still anticipated and you have taken no action, this system is designed to apply the brakes to help reduce the severity of the possible impact*.

Emergency Brake Lights are activated through the hazard warning lights to alert vehicles behind you in the event of sudden braking.

LATCH AND AIRBAGS**

To improve safety, two LATCH points for baby/child seat restraints are fitted on each side of the rear seats and a comprehensive system of six airbags including driver and front passenger airbags, side curtain and thorax are standard.



PRETENSIONERS

The seat belt pre-tensioners activate in conjunction with the Supplementary Restraint System (SRS) to provide extra protection in the event of a severe frontal impact. They automatically reduce any slack in a seat belt to reduce forward movement to all outboard seating positions.

*These features are not a substitute for driving safely with due care and attention and will not function under all circumstances, speeds, weather and road conditions, etc. Driver should not assume that these features will correct errors of judgment in driving. Please consult the owner's manual or your local authorized Jaguar Retailer for more details.
**Please remember that the safety belts in a vehicle constitute the primary protection system for driver and passengers in collisions. Airbags are not designed to deploy in all collisions. The airbag Supplemental Restraint System (SRS) is a supplement to the safety belts and is designed to work as a system with the safety belts. Although airbags provide additional protection, airbags without safety belts do not provide optimal protection in a crash. Always wear your safety belts. Children younger than 13 years old should always be properly restrained in a back seat, away from airbags. Never place an infant seat in the front seat.

VEHICLE SHOWN: E-PACE R-DYNAMIC SE IN YULONG WHITE WITH OPTIONAL EQUIPMENT



CONTENTS

PERSONALIZATION

LOCATE A RETAILER

BUILD YOUR OWN

BRIGHTER LIGHTS, HELP NIGHT-TIME DRIVING

The E-PACE features all-round exterior LED lighting as standard. LED lights are designed to last the lifetime of the vehicle and are more fuel-efficient as they use less energy. The quality of light produced is closer to daylight conditions, so driving at night becomes less tiring.

Driving at night is made easier by the optional Auto High Beam Assist^{1,2} which detects lights ahead and automatically lowers the high beam for oncoming traffic. And with the distinct exterior graphic of the signature Daytime Running Lights², the E-PACE is instantly recognizable as a Jaguar.

¹Standard on SE and HSE Specification Packages. ²Not available on Standard model.

VEHICLE SHOWN: E-PACE S IN BORASCO GREY WITH OPTIONAL EQUIPMENT



INTRODUCTION

DESIGN

PERFORMANCE

TECHNOLOGY

DRIVER ASSISTANCE

PRACTICALITY

THE WORLD OF JAGUAR





PRACTICALITY A PLACE FOR EVERYTHING

The E-PACE has significant interior storage. The deep storage in the center console features removable cupholders to provide a highly flexible space, suitable for smaller tablets or four 25 oz bottles which can be stored flat. Inside the console, a 12V socket and two USB sockets are available for charging, while the rear of the center console has three optional USB sockets for passengers in the back. The floor of the console also has a tablet retaining feature to secure a device during charging.

A smartphone holder sits between the cupholders so occupants can charge a phone while still using the cupholders. A removable lid sits on top of the cupholders to hold coins and keys and includes a phone retaining feature. The large glovebox is great for all those essentials you want to keep close at hand. Both deep front door bins have been sculpted to hold a range of items that may be needed.

INTERIOR SHOWN: E-PACE SE WITH OPTIONAL LIGHT OYSTER WINDSOR LEATHER SEATS WITH EBONY/LIGHT OYSTER INTERIOR AND LIGHT OYSTER HEADLINING



VEHICLE SHOWN: E-PACE S IN BORASCO GREY WITH OPTIONAL EQUIPMENT



Activity Key

PRACTICALLY DESIGNED

Whatever adventure you're after, our Activity Key is the perfect companion. The E-PACE also has towing capacity of up to 3,968 lbs and a suite of features to help make towing easier and more assured.

ACTIVITY KEY

With the optional Activity Key you can enjoy your favorite activities, and keep your car key securely in the car. For extra convenience, you can strap the Activity Key to your wrist. The wristband is robust and fully waterproof, allowing you to take part in a range of activities from cycling to swimming. Simply place your Activity Key against the sensor on the tailgate¹ to lock or unlock the car and deactivate or reactivate the conventional key fob.



Tow Hitch Assist

TOW HITCH ASSIST

Tow Hitch Assist² makes coupling a trailer to the vehicle much easier by helping you visualize the hitching process. It displays the predicted path of the vehicle tow ball towards the trailer tow bar on the Touchscreen.

TOW ASSIST

Tow Assist² helps with reversing by predicting the trailer's direction. The system displays the predicted path of both the vehicle and the trailer as colored trajectory lines on the Touchscreen.

TRAILER STABILITY ASSIST

Trailer Stability Assist (TSA) gives you greater stability when towing. Should TSA detect a dangerous trailer sway situation is developing, it can help you regain control by gradually reducing the E-PACE speed by lowering engine power and applying the brakes individually on each side of the vehicle to control the sway*.

*These features are not a substitute for driving safely with due care and attention and will not function under all circumstances, speeds, weather and road conditions, etc. Driver should not assume that these features will correct errors of judgment in driving. Please consult the owner's manual or your local authorized Jaguar Retailer for more details.

¹Please consult your local Jaguar Retailer for more information. ²Standard when tow hitch receiver is ordered.

GESTURE TAILGATE



TAKE YOUR WHOLE WORLD WITH YOU

Wherever you need to go, whatever you need to take – the E-PACE is designed to carry you and your cargo effortlessly and in style.

If your hands are full, the optional powered gesture tailgate* lets you open the trunk hands-free. Simply present your foot under one of the E-PACE rear bumper and the tailgate opens or closes.

Longer items can easily be accommodated by a maximum cargo space width over 4 feet – making it easy to fit a baby stroller lying flat. With a trunk capacity of up to 24.2 cu.ft., you can easily fit two medium sized suitcases and three carry-on bags with ease.

Versatile 60:40 folding rear seats are standard, so you can carry items up to 5 feet long, with one or two passengers in the back. For bulky items, like flat pack furniture, fold down the second row seats completely to create 52.7 cu.ft. of space. Optional easy-to-use rails and a divider net help increase the adaptability of space storage.

*Included within HSE Specification Package.



VEHICLE SHOWN: E-PACE S IN BORASCO GREY WITH OPTIONAL EQUIPMENT



E-PACE SPECIFICATION

Configure your vehicle at jaguarusa.com

This is where our E-PACE becomes your E-PACE. You have a number of choices; from selecting the E-PACE or E-PACE R-Dynamic, your engine and specification package, to exterior and interior colors, wheels and those detailed touches that make the vehicle your own. You can also design and build your perfect E-PACE on our online configurator at Jaguarusa.com

1

CHOOSE YOUR MODEL

Page 40

If you would like our designers to choose your Jaguar E-PACE features for you, turn to page 40 to see our First Edition.

2

CHOOSE YOUR ENGINE

Page 44

You can choose from two efficient and powerful gas engines.

3

CHOOSE YOUR SPECIFICATION PACKAGE

Page 46

To make your selection of options easier, you have the choice of adding specification packages - S, SE or HSE.

4

CHOOSE YOUR EXTERIOR

Page 48

There's a wide range of exterior options to select from; roof styles, paint colors, the exterior Black Package and wheels - all enable you to truly express yourself.

5

CHOOSE YOUR INTERIOR

Page 56

Once you've chosen your seat style, select your preferred colorway.

6

CHOOSE YOUR OPTIONS & JAGUAR GEAR

Page 64

You can choose from a wealth of factory-fit options to create the exact vehicle you want. Your Jaguar Retailer also has available a wide range of accessories to fit.



CONTENTS

PERSONALIZATION

LOCATE A RETAILER

BUILD YOUR OWN

1 CHOOSE YOUR MODEL FIRST EDITION

Only available for the first model year, the First Edition includes exclusive design details including Caldera Red paint and 20" 6 split-spoke 'Style 6014' with Satin Grey Diamond Turned finish alloy wheels. High specification exterior features include the Black Package and fixed panoramic roof as standard.

Inside, exclusive Ebony Windsor leather with Flame Red twin-needle contrast stitching, branded carpet mats and metal treadplates are unique to the First Edition. High specification suedecloth headlining is featured and the Head-up Display system* also comes as standard.

First Edition includes all of the features available on R-Dynamic SE (see pages 43 and 47) plus the following as standard:

EXTERIOR FEATURES

- Fixed panoramic roof
- Exterior Black Package
- 20" 6 split-spoke 'Style 6014' with Satin Grey Diamond Turned finish alloy wheels

INTERIOR FEATURES

- First Edition carpet mats
- Metal treadplates with First Edition branding
- First Edition Ebony Windsor leather seats with Flame Red stitch
- 18-way heated front seats with memory
- Ebony suedecloth headlining
- Configurable Ambient Interior Lighting
- Cargo space storage rails with luggage retention kit
- Additional power sockets
- Head-up Display
- Activity Key
- Gesture tailgate
- Keyless entry
- SiriusXM™ satellite and HD radio*

Search 'Jaguar E-PACE First Edition' for more details.

*These features are not a substitute for driving safely with due care and attention and will not function under all circumstances, speeds, weather and road conditions, etc. Driver should not assume that these features will correct errors of judgment in driving. Please consult the owner's manual or your local authorized Jaguar Retailer for more details.



MODEL

ENGINE

SPECIFICATION PACKAGE

EXTERIOR

INTERIOR

OPTIONS AND JAGUAR GEAR

TECHNICAL DETAILS

SPECIAL VEHICLE OPERATIONS

1 CHOOSE YOUR MODEL

E-PACE P250



E-PACE R-DYNAMIC S P300



*These features are not a substitute for driving safely with due care and attention and will not function under all circumstances, speeds, weather and road conditions, etc. Driver should not assume that these features will correct errors of judgment in driving. Please consult the owner's manual or your local authorized Jaguar Retailer for more details.

**Do not use Jaguar InControl® features under conditions that will affect your safety or the safety of others. Driving while distracted can result in loss of vehicle control.

E-PACE STANDARD FEATURES

EXTERIOR FEATURES

Chrome side vents
Privacy glass
Infrared reflective windshield
Satin Black window surrounds
Heated door mirrors
Rain sensing wipers
Twin tailpipes with finishers
Tailgate spoiler
Heated rear window
LED headlights
LED rear lights
Rear fog lights
Automatic headlights
3-flash lane change indicators
Approach illumination (via Remote) and follow me home lighting

WHEELS AND TIRES

All Season Tires
17" 10 spoke 'Style 1005' alloy wheels
Reduced section steel spare wheel
Tire Pressure Monitoring System (TPMS)

SEATING AND INTERIOR TRIM

Fabric seats
8-way manual front seats
Leather steering wheel
Morzine headlining
Light Oyster headlining
Metal treadplates with Jaguar script
60:40 split fold rear seat
Carpet mats

DYNAMICS

All Surface Progress Control (ASPC)*
Hill Launch Assist*
JaguarDrive Control™
Electric Power Assisted Steering (EPAS)*
Torque Vectoring by Braking (TVbB)*
Dynamic Stability Control and Traction Control*
Electric Parking Brake (EPB)
Low Traction Launch*
Stop/Start
Push Button Start

INTERIOR FEATURES

Two-zone Climate Control
Center console glovebox
Twin front cupholders with cover
Center console with armrest
Sunvisors with illuminated vanity mirrors
Second row air vents
Overhead lighting console

E-PACE R-DYNAMIC S ADDITIONAL STANDARD FEATURES

WHEN R-DYNAMIC IS SPECIFIED

R-Dynamic Body Kit (unique front bumper and a Gloss Black finish front grille)
R-Dynamic soft grain steering wheel with Black gearshift paddles

Ebony Sportmesh sport seats with contrast stitching
Front fog lights
Satin Chrome side vents

INFOTAINMENT

10" Touch Pro**
Instrument panel with 5" display
Jaguar Sound System - 125W
AM/FM Radio
Dynamic Volume Control
Bluetooth* connectivity†
Voice control†
Power sockets - 4 x 12V power and 2 x USB data and charge
ECO Driving Style Assistant
Trip Computer

CONVENIENCE

Cargo space cover
Cargo space elasticated side strap
Cargo space light luggage
Cargo space tie-downs
Cargo space hooks
Cargo space storage net

SAFETY

Anti-lock Braking System
Electronic Brake-force Distribution
Emergency Brake Assist
Front airbags**, with passenger seat occupant detector
Front side airbags**
Full length side window curtain airbag**
Perimetric alarm and immobilizer
Customer configurable autolock
Rear LATCH child seat anchors
Power operated child locks
Seat belt reminder
Passive front head restraints

DRIVER ASSISTANCE*

Emergency Braking
Cruise Control and Speed limiter
Driver Condition Monitor
Lane Keep Assist
Front and Rear Parking Aid
Rear View Camera
Remote

*Driving while distracted can result in loss of vehicle control. Do not operate, adjust or view the navigation or multimedia systems under conditions that will affect your safety or the safety of others. Only use mobile phones, and other devices, even with voice commands, when it is safe to do so. **Please remember that the safety belts in a vehicle constitute the primary protection system for driver and passengers in collisions. Airbags are not designed to deploy in all collisions. The airbag Supplemental Restraint System (SRS) is a supplement to the safety belts and is designed to work as a system with the safety belts. Although airbags provide additional protection, airbags without safety belts do not provide optimal protection in a crash. Always wear your safety belts. Children younger than 13 years old should always be properly restrained in a back seat, away from airbags. Never place an infant seat in the front seat.

2 CHOOSE YOUR ENGINE

Configure your vehicle at jaguarusa.com

ENGINE

DRIVE AND ENGINE PERFORMANCE

POWER (HP)		P250	P300
Transmission		Automatic	Automatic
Driveline		All Wheel Drive (AWD)	All Wheel Drive (AWD)
Maximum power	HP/rpm	246/5,500	296/5,500
Maximum torque	lb-ft/rpm	269/1,200-4,500	295/1,500-4,500
Capacity	cc	1,998	1,998
No. of cylinders		4	4
Cylinder layout		Inline	Inline
PERFORMANCE*			
Maximum speed	mph	143	152
Acceleration (seconds)	0-60 mph	6.6	5.9

*Always follow local speed limits.
P300 engines must be fitted with S, SE or HSE Specification Packages.



3 CHOOSE YOUR SPECIFICATION PACKAGE

S P250



SE P250



R-DYNAMIC S P300



R-DYNAMIC SE P300



R-DYNAMIC HSE P300



	S	SE	HSE
EXTERIOR LIGHTING	LED headlights with signature Daytime Running Lights (DRL)	LED headlights with signature DRL Auto High Beam Assist (AHBA)	LED headlights with signature DRL Auto High Beam Assist (AHBA)
WHEELS	18" 9 spoke 'Style 9008' When R-Dynamic is specified: 18" 5 spoke 'Style 5048'	19" 10 spoke 'Style 1039' When R-Dynamic is specified: 19" 5 spoke 'Style 5049'	20" split-spoke 'Style 5051' with Satin Grey Diamond Turned finish
CONVENIENCE	Auto-dimming interior rear view mirror Auto-dimming, power fold, heated door mirrors with approach lights	Auto-dimming interior rear view mirror Auto-dimming, power fold, heated door mirrors with memory and approach lights Powered tailgate	Auto-dimming interior rear view mirror Auto-dimming, power fold, heated door mirrors with memory and approach lights Powered gesture tailgate Keyless Entry
SEATING	Grained leather seats 10-way electric front seats When R-Dynamic is specified: Grained leather sport seats with contrast stitching	Grained leather seats 14-way electric memory front seats When R-Dynamic is specified: Grained leather sport seats with contrast stitching	Perforated Windsor leather sport seats with contrast stitching 18-way electric memory front seats
INFOTAINMENT*	Navigation Pro Connect Pro Package consisting of Pro Services and Wi-Fi Hotspot [†] Smartphone Package consisting of InControl Apps	Navigation Pro Connect Pro Package consisting of Pro Services and Wi-Fi Hotspot [†] Smartphone Package consisting of InControl Apps Meridian™ Sound System – 380W	Navigation Pro Connect Pro Package consisting of Pro Services and Wi-Fi Hotspot [†] Smartphone Package consisting of InControl Apps Meridian™ Sound System – 380W 12.3" Interactive Driver Display
DRIVER ASSISTANCE**	Traffic Sign Recognition and Adaptive Speed Limiter Park Package consisting of 360° Parking Aid, Rear Traffic Monitor and Park Assist	Traffic Sign Recognition and Adaptive Speed Limiter Park Package consisting of 360° Parking Aid, Rear Traffic Monitor and Park Assist Drive Package consisting of Adaptive Cruise Control with Queue Assist, High-speed Emergency Braking and Blind Spot Assist	Traffic Sign Recognition and Adaptive Speed Limiter Park Package consisting of 360° Parking Aid, Rear Traffic Monitor and Park Assist Drive Package consisting of Adaptive Cruise Control with Queue Assist, High-speed Emergency Braking and Blind Spot Assist

*Do not use Jaguar InControl® features under conditions that will affect your safety or the safety of others. Driving while distracted can result in loss of vehicle control.
 **These features are not a substitute for driving safely with due care and attention and will not function under all circumstances, speeds, weather and road conditions, etc.
 †The Wi-Fi Hotspot is intended for passenger use only. InControl features may require an additional subscription with separate terms and conditions.

4 CHOOSE YOUR EXTERIOR

Configure your vehicle at jaguarusa.com

CHOOSE YOUR ROOF



Body color roof (standard)



Body color fixed panoramic roof (optional)



Black contrast roof* (optional)



Black contrast fixed panoramic roof* (optional)

*Not available with Santorini Black or Farallon Pearl Black exterior colors.
VEHICLE SHOWN: E-PACE R-DYNAMIC SE IN YULONG WHITE WITH OPTIONAL EQUIPMENT

CHOOSE YOUR COLOR



Body color: Fuji White (Solid)

Roof color: Black



Body color: Yulong White (Metallic)

Roof color: Black

4 CHOOSE YOUR EXTERIOR

Configure your vehicle at jaguarusa.com



Body color: Borasco Grey (Metallic)

Roof color: Black



Body color: Santorini Black (Metallic)



Body color: Firenze Red (Metallic)

Roof color: Black



Body color: Farallon Pearl Black (Premium Metallic)



Body color: Corris Grey (Metallic)

Roof color: Black



Body color: Indus Silver (Metallic)

Roof color: Black



Body color: Caesium Blue (Metallic)

Roof color: Black



Body color: Silicon Silver (Premium Metallic)

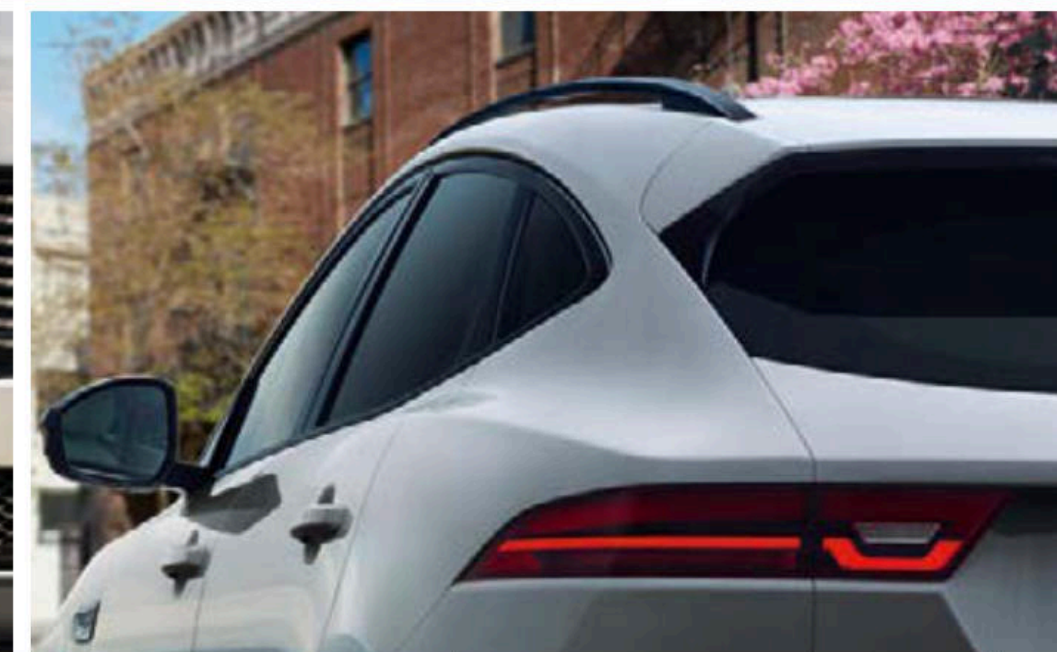
Roof color: Black

4 CHOOSE YOUR EXTERIOR

Configure your vehicle at jaguarusa.com

BLACK PACKAGE

The optional Black Package adds a touch of drama. It includes a Gloss Black grille and surround, side vents and window surrounds. If you so desire, you can complete the look with the addition of the optional 20" 5 split-spoke 'Style 5051' alloy wheels with Gloss Black finish.



VEHICLE SHOWN: E-PACE S IN BORASCO GREY WITH OPTIONAL EQUIPMENT

4 CHOOSE YOUR EXTERIOR

Configure your vehicle at jaguarusa.com

CHOOSE YOUR WHEELS

STANDARD AND OPTIONAL

OPTIONAL



17" 10 SPOKE 'STYLE 1005'
Standard on E-PACE



18" 9 SPOKE 'STYLE 9008'
Standard on E-PACE S
Optional on R-Dynamic S



19" 5 SPOKE 'STYLE 5049'
Standard on E-PACE R-Dynamic SE
Optional on S, SE and R-Dynamic S



19" 5 SPOKE 'STYLE 5049'
WITH SATIN DARK GREY FINISH
Optional on all models except E-PACE
Standard and R-Dynamic HSE



20" 5 SPOKE 'STYLE 5054'
Optional on all models except
E-PACE Standard



18" 5 SPOKE 'STYLE 5048'
Standard on E-PACE R-Dynamic S
Optional on S



19" 10 SPOKE 'STYLE 1039'
Standard on E-PACE SE
Optional on S, R-Dynamic S and SE



20" 5 SPLIT-SPOKE 'STYLE 5051'
WITH SATIN GREY DIAMOND TURNED FINISH
Standard on E-PACE R-Dynamic HSE



20" 5 SPLIT-SPOKE 'STYLE 5051'
WITH GLOSS BLACK FINISH
Optional on all models except
E-PACE Standard



21" 5 SPLIT-SPOKE 'STYLE 5053'
WITH SATIN GREY DIAMOND TURNED FINISH
Optional on all models except
E-PACE Standard

*Not available on E-PACE standard model.
†Requires Adaptive Dynamics.

5 CHOOSE YOUR INTERIOR

Configure your vehicle at jaguarusa.com

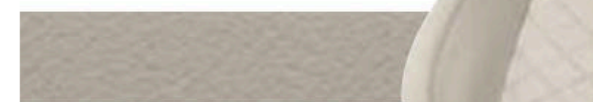
E-PACE



FABRIC



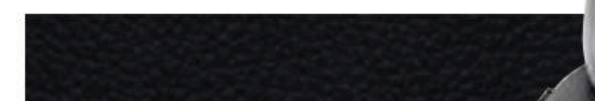
GRAINED LEATHER



WINDSOR LEATHER



E-PACE R-DYNAMIC



GRAINED LEATHER



WINDSOR LEATHER



Seats shown 18-way electric memory front seats in Windsor leather.

SELECT YOUR SEAT MATERIAL AND FUNCTIONALITY

SEAT STYLE	8-WAY MANUAL FRONT	10-WAY ELECTRIC FRONT	14-WAY ELECTRIC FRONT	18-WAY ELECTRIC FRONT
E-PACE	●	○	○	○
E-PACE R-Dynamic	—	●	○	○
MOVEMENT				
Forward/backward	Manual (2)	Powered (2)	Powered (2)	Powered (2)
Cushion height	Manual (2)	Powered (2)	Powered (2)	Powered (2)
Cushion tilt	—	Powered (2)	Powered (2)	Powered (2)
Cushion extension	—	—	—	Powered (2)
Recline	Manual (2)	Powered (2)	Powered (2)	Powered (2)
Lumbar	—	—	Powered (4)	Powered (4)
Boilers	—	—	—	Powered (2)
Headrest height	Manual (2)	Manual (2)	Manual (2)	Manual (2)
FEATURES				
Driver and Passenger memory	—	—	●	●
Rear center armrest	—	●	●	●
OPTIONAL FUNCTIONALITY				
Heated front	—	○	○	○
Heated front and rear	○	○	○	○
Heated and cooled front and heated rear	—	—	—	○
MATERIAL				
Fabric	●	—	—	—
Grained leather	—	●	●	—
Windsor leather	—	—	—	●
AVAILABILITY				
E-PACE	●	—	—	—
S	—	●	○	○
SE	—	—	●	○
HSE	—	—	—	●

● Standard ○ Option — Not available



CONTENTS

PERSONALIZATION

LOCATE A RETAILER

BUILD YOUR OWN

5 CHOOSE YOUR INTERIOR

Configure your vehicle at jaguarusa.com

SELECT YOUR INTERIOR COLOR COMBINATION

	①	②	③	④	⑤	⑥
COLOR COMBINATION	STITCH	SEAT MATERIAL	HEADLINING	UPPER FACIA	MID ROLL	CARPET
E-PACE						
A Ebony/Ebony*	Ebony	Ebony Fabric	Light Oyster ¹	Ebony	Ebony	Ebony
B Ebony/Ebony**	Ebony	Ebony Grained leather	Light Oyster ¹	Ebony	Ebony	Ebony
C Lunar/Light Oyster**	Light Oyster	Light Oyster Grained leather	Light Oyster ¹	Lunar	Light Oyster	Lunar
D Ebony/Ebony**	Ebony	Ebony Windsor leather	Light Oyster ¹	Ebony	Ebony	Ebony
E Lunar/Light Oyster***	Light Oyster	Light Oyster Windsor leather	Light Oyster ¹	Lunar	Light Oyster	Lunar
F Ebony/Light Oyster**	Light Oyster	Light Oyster Windsor leather	Light Oyster ¹	Ebony	Light Oyster	Ebony
G Ebony/Sienna Tan**	Sienna Tan	Sienna Tan Windsor leather	Light Oyster ¹	Ebony	Sienna Tan	Ebony
E-PACE R-DYNAMIC						
H Ebony/Ebony**	Light Oyster	Ebony Grained leather	Ebony ²	Ebony	Ebony	Ebony
I Ebony/Ebony**	Reims Blue	Ebony Grained leather	Ebony ²	Ebony	Ebony	Ebony
J Ebony/Light Oyster**	Light Oyster	Light Oyster Grained leather	Ebony ²	Ebony	Light Oyster	Ebony
K Ebony/Ebony**	Light Oyster	Ebony Windsor leather	Ebony ²	Ebony	Ebony	Ebony
L Ebony/Light Oyster**	Light Oyster	Light Oyster Windsor leather	Ebony ²	Ebony	Light Oyster	Ebony
M Ebony/Mars Red**	Red	Mars Red Windsor leather	Ebony ²	Ebony	Mars Red	Ebony
N Ebony/Eclipse**	Reims Blue	Eclipse Windsor leather	Ebony ²	Ebony	Eclipse	Ebony

*Only available on standard E-PACE. **Not available on standard E-PACE with P250 engine.
¹Optional Ebony headlining available. ²Optional Light Oyster headlining available as a no cost option.



MODEL

ENGINE

SPECIFICATION PACKAGE

EXTERIOR

INTERIOR

OPTIONS AND JAGUAR GEAR

TECHNICAL DETAILS

SPECIAL VEHICLE OPERATIONS

5 CHOOSE YOUR INTERIOR

Configure your vehicle at jaguarusa.com

E-PACE INTERIOR COLOR COMBINATIONS

A. EBONY/EBONY

Interior shown: E-PACE with Ebony/Ebony interior with Ebony stitch, Ebony fabric seats and Light Oyster headlining.



D. EBONY/EBONY*

Interior shown: E-PACE HSE with Ebony/Ebony interior with Ebony stitch, Ebony Windsor leather seats and Light Oyster headlining.



E. LUNAR/LIGHT OYSTER*

Interior shown: E-PACE HSE with Lunar/Light Oyster interior with Light Oyster stitch, Light Oyster Windsor leather seats and Light Oyster headlining.



B. EBONY/EBONY*

Interior shown: E-PACE SE with Ebony/Ebony interior with Ebony stitch, Ebony grained leather seats and Light Oyster headlining. This interior is also available on E-PACE S.



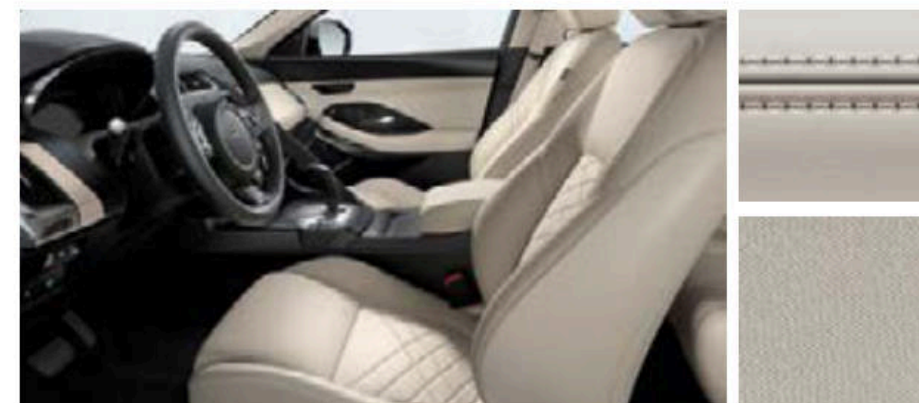
C. LUNAR/LIGHT OYSTER*

Interior shown: E-PACE SE with Lunar/Light Oyster interior with Light Oyster stitch, Light Oyster grained leather seats and Light Oyster headlining. This interior is also available on E-PACE S.



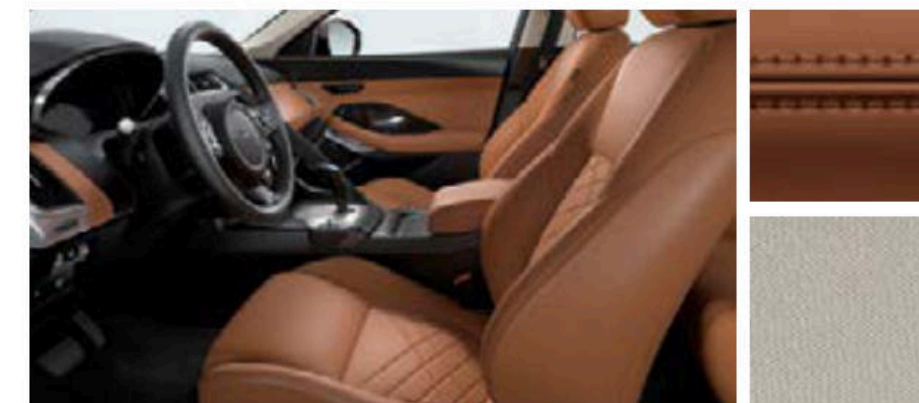
F. EBONY/LIGHT OYSTER*

Interior shown: E-PACE HSE with Ebony/Light Oyster interior with Light Oyster stitch, Light Oyster Windsor leather seats and Light Oyster headlining.



G. EBONY/SIENNA TAN*

Interior shown: E-PACE HSE with Ebony/Sienna Tan interior with Sienna Tan stitch, Sienna Tan Windsor leather seats and Light Oyster headlining.



*Not available on standard E-PACE with P250 engine.

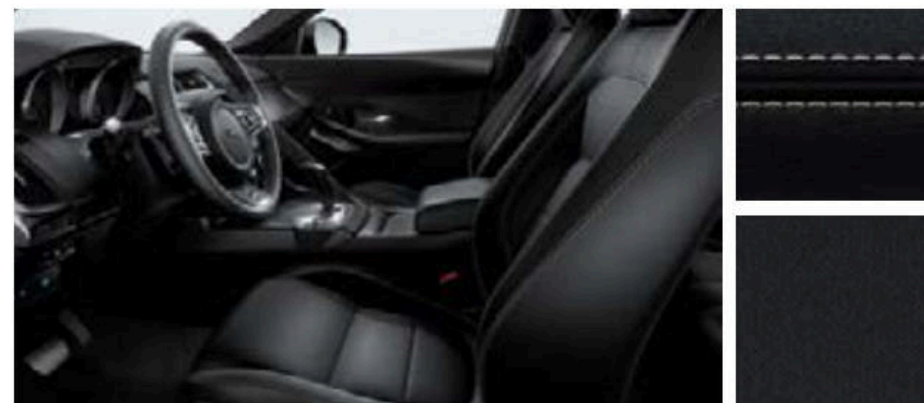
5 CHOOSE YOUR INTERIOR

Configure your vehicle at jaguarusa.com

E-PACE R-DYNAMIC INTERIOR COLOR COMBINATIONS

H. EBONY/EBONY

Interior shown: E-PACE R-Dynamic SE with Ebony/Ebony interior with Light Oyster stitch, Ebony Grained leather sport seats and Ebony headlining. This interior is also available on E-PACE R-Dynamic S.



K. EBONY/EBONY

Interior shown: E-PACE R-Dynamic HSE with Ebony/Ebony interior with Light Oyster stitch, Ebony Windsor leather sport seats and Ebony headlining. This interior is also available on R-Dynamic S and SE.



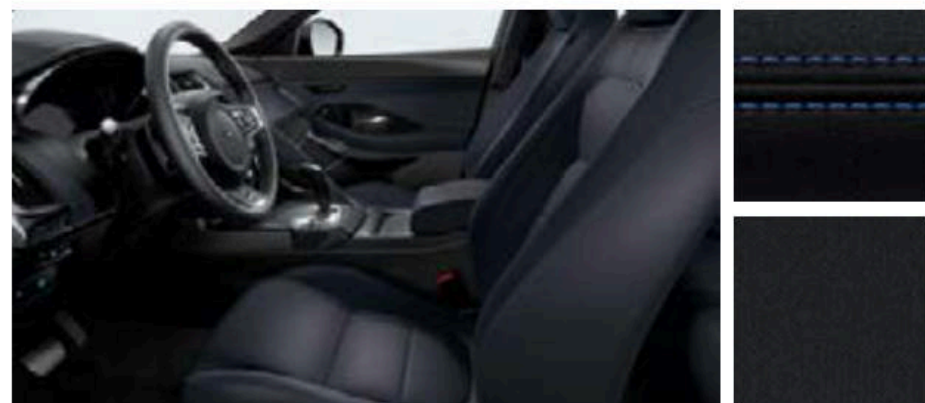
L. EBONY/LIGHT OYSTER

E-PACE R-Dynamic HSE with Ebony/Light Oyster interior with Light Oyster stitch, Light Oyster Windsor leather sport seats and Ebony headlining. This interior is also available on R-Dynamic S and SE.



I. EBONY/EBONY

Interior shown: E-PACE R-Dynamic SE with Ebony/Ebony interior with Reims Blue stitch, Ebony Grained leather sport seats and Ebony headlining. This interior is also available on E-PACE R-Dynamic S.



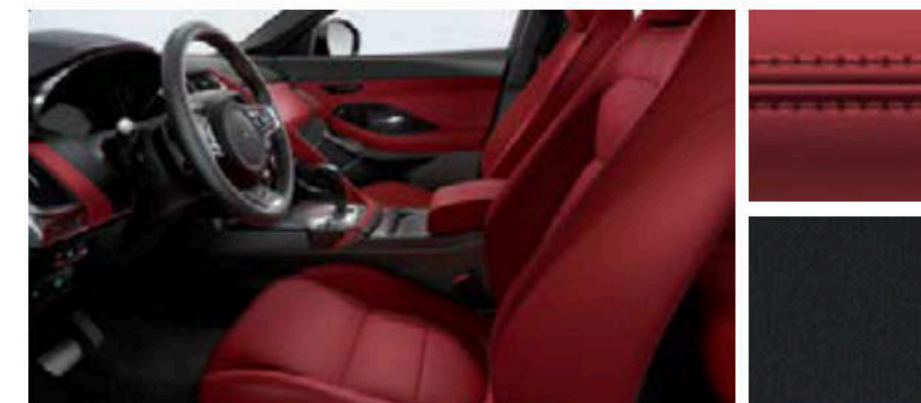
J. EBONY/LIGHT OYSTER

Interior shown: E-PACE R-Dynamic SE with Ebony/Light Oyster interior with Light Oyster stitch, Light Oyster Grained leather sport seats and Ebony headlining. This interior is also available on E-PACE R-Dynamic S.



M. EBONY/MARS RED

Interior shown: E-PACE R-Dynamic HSE with Ebony/Mars Red interior with Red stitch, Mars Red Windsor leather sport seats and Ebony headlining. This interior is also available on R-Dynamic S and SE.



N. EBONY/ECLIPSE

Interior shown: E-PACE R-Dynamic HSE with Ebony/Eclipse interior with Reims Blue stitch, Eclipse Windsor leather sport seats and Ebony headlining. This interior is also available on R-Dynamic S and SE.



6 CHOOSE YOUR OPTIONS & JAGUAR GEAR

Configure your vehicle at jaguarusa.com

EXTERIOR OPTIONAL FEATURES

Full Length Roof Rails¹
Factory-fit roof rails facilitate easy fitment of cross bars for truly stable roof carrying. Pre-set positioning points ensure cross bars are fixed in optimum position for weight distribution and dynamics. Available in Black or Silver finishes.

LED Headlights with Signature Daytime Running Lights (DRL)
See page 32.

Auto High Beam Assist (AHBA)*
Auto High Beam Assist provides improved comfort when driving at night. AHBA uses a forward facing camera to detect oncoming headlights and lowers the main beam automatically.

No Badges
You have the option to remove both the specification package and engine badges from the side vents and rear of the vehicle respectively.

Auto-dimming, power fold, heated door mirrors with memory and approach lights²
Improving visibility when maneuvering, these heated door mirrors feature auto-dipping functionality when the Reverse gear is selected. In addition, the door mirrors are power folding, to avoid damage during parking in tight spaces. Combined with memory seats, the mirrors are also equipped with a memory function. Once you set your ideal seating and mirror positions, it automatically recalls your preferred driving position settings. Integrated approach lights to the underside of the mirrors illuminate the ground with an eye-catching Jaguar and cub design.

Chrome side window surrounds
Chrome side window surrounds accentuate the stylish design of the E-PACE.



LED Headlights with Signature DRL

SELECT YOUR FACTORY-FIT OPTIONS

Options must be specified at the point of ordering your new vehicle. For full feature and option availability, please refer to the accompanying Specification and Price Guide or visit your local Jaguar Retailer.

WHEELS AND TIRES

Bright Metal Pedals³
Stainless steel Bright finish sports pedal covers are easy to fit and feature hidden fixings for a clean finish.



Bright Metal Pedals

INTERIOR OPTIONAL FEATURES AND PACKAGES

Illuminated Metal Treadplates with Jaguar Script
Illuminated aluminum treadplates, featuring Jaguar script are available on driver and front passenger sides.

Configurable Ambient Interior Lighting
This feature allows you to vary the color and shade, changing the ambience of the cabin to suit your mood. There are ten colors in total.

Smoker's Package
Add a lighter socket and ashtray to the center console.

Auto-dimming Interior Rear View Mirror
See page 11.

Cabin Air Ionization
This technology ionizes particles in the air, making them attract to surfaces and thus helping to cleanse the air. It can be switched on or off.

Air Quality Sensor
This extra climate control option monitors the air quality within the cabin and automatically recirculates the air as necessary.

Cold Climate Package
This offers heated washer jets, heated windshield and soft grain leather heated steering wheel.



Illuminated Metal Treadplates with Jaguar Script

*These features are not a substitute for driving safely with due care and attention and will not function under all circumstances, speeds, weather and road conditions, etc. Driver should not assume that these features will correct errors of judgment in driving. Please consult the owner's manual or your local authorized Jaguar Retailer for more details.

¹Only available when optional fixed panoramic roof is fitted. Not available on E-PACE Standard model.
²Not available on Standard model. Only available when memory seats are fitted on S. ³Standard on R-Dynamic models.

Features and their availability may differ by vehicle specification. Please refer to Specification and Price Guide for details or contact your nearest Jaguar Retailer, for more information.



6 CHOOSE YOUR OPTIONS & JAGUAR GEAR

Configure your vehicle at jaguarusa.com

SEATING AND INTERIOR TRIM

Light Oyster Morzine headlining

See page 60.

Ebony Morzine headlining

See page 60.

Ebony Suedecloth headlining

Premium suedecloth headlining option.

Premium Carpet Mats

Premium carpet mats with Nubuck edging to complement the E-PACE's interior styling.

Soft Grain Leather Steering Wheel

Trimmed in luxurious soft grain leather, this option adds added comfort to the steering wheel of the E-PACE.



Premium carpet mats

INFOTAINMENT

Navigation Pro¹

See page 20.

Connect Pro Package²

See page 20.

Smartphone Package

See page 21.

Meridian™ Sound System – 380W

See page 22.

Meridian™ Surround Sound System – 825W

See page 22.

SiriusXM[®] Satellite and HD Radio™

The option of HD satellite radio technology offers improved sound quality, and a wide choice of stations and entertainment*.

Head-up Display

See page 17.

Interactive Driver Display

See page 17.



Head-up Display

CONVENIENCE

Keyless Entry

Allows you to lock and unlock the E-PACE without pressing a button. Simply approach the vehicle with the key fob in your pocket or bag, and unlock and disarm the vehicle using the door handle. When leaving the vehicle, you can lock the E-PACE by simply pressing the button on the door handle, or by using the key fob.

Activity Key

See page 35.

Powered Tailgate

See page 36.

Powered Gesture Tailgate³

See page 36.

Garage Door Opener (HomeLink[™])

The HomeLink System is a universal transmitter fitted to the underside of the interior rear view mirror. This transmitter can be programmed to operate up to 3 home or office wireless controlled systems, such as garage doors, automatic gates, or security lighting.

Cargo space Partition Net

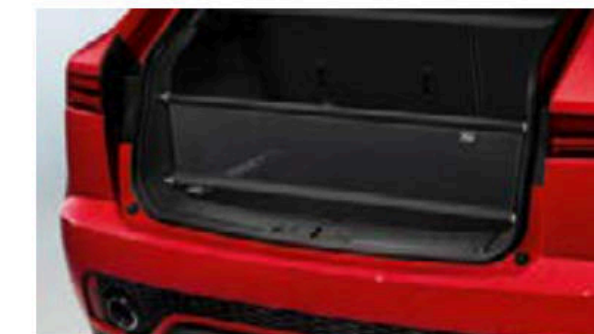
Designed to protect vehicle occupants against the displacement of luggage.

Cargo space Storage Rails with Luggage Retention Kit

Cargo space rails extend and adjust to secure items.

Additional power sockets

Three additional USB charging points in the second row center console.



Cargo space Partition Net

DRIVER ASSISTANCE**

360° Surround Camera

See page 25.

Drive Package

See page 24.

Park Package

See page 25.

*A 3-month trial subscription to the Sirius All Access package is included with the vehicle, which gives you access to 150+ channels of premium programming. Plus you can stream SiriusXM on your computer, smartphone or tablet – it's included in your trial. If you decide to continue service after your trial, the subscription plan you choose will automatically renew thereafter and you will be charged according to your chosen payment method at then-current rates. Fees and taxes apply. To cancel you must call SiriusXM at 1-866-635-2349. See the SiriusXM Customer Agreement for complete terms at siriusxm.com. All fees and programming are subject to change. SiriusXM Satellite Radio is not available in Alaska or Hawaii.

¹Must be selected with Connect Pro Package. ²Must be selected with Navigation Pro. ³Only available when optional Keyless Entry is fitted.

Features and their availability may differ by vehicle specification. Please refer to Specification and Price Guide for details or contact your nearest Jaguar Retailer, for more information.

**These features are not a substitute for driving safely with due care and attention and will not function under all circumstances, speeds, weather and road conditions, etc. Driver should not assume that these features will correct errors of judgment in driving. Please consult the owner's manual or your local authorized Jaguar Retailer for more details.



6 CHOOSE YOUR OPTIONS & JAGUAR GEAR

Configure your vehicle at jaguarusa.com



SELECT YOUR JAGUAR GEAR

Jaguar Gear Accessories can be purchased through your Jaguar Retailer and added at any stage of the vehicle's life - not just when it's new. Jaguar Gear approved accessories are designed, tested and manufactured to the same exacting standards as the original equipment fitted to your vehicle.

For our full range of accessories please search 'Jaguar Gear Accessories' to view the online catalog.

VEHICLE SHOWN: E-PACE FIRST EDITION IN CALDERA RED

EXTERIOR ACCESSORIES

Fixed Side Steps^{1 2}

The side steps aid entry and exit to the vehicle and improve access to the roof. Design features Jaguar branding and includes brushed stainless steel edge trim and a rubber tread mat, to complement the vehicle's exterior styling cues.

Bright Side Tubes²

Highly polished stainless steel side tubes complement the vehicle's exterior style.

Carbon Fiber Mirror Covers

High grade Carbon Fiber mirror covers provide a performance-inspired styling upgrade.

Noble Chrome Mirror Covers

Noble Chrome mirror covers accentuate the stylish design of the exterior mirrors.

Carbon Fiber Side Power Vents

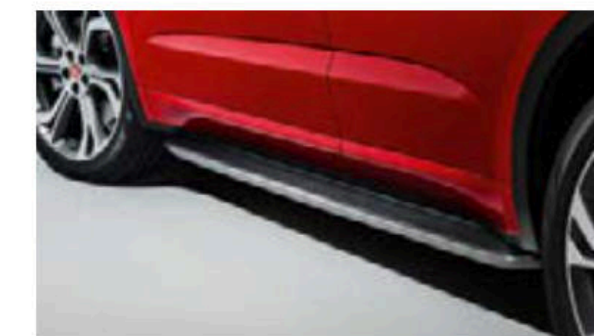
High grade Carbon Fiber side power vents provide a performance-inspired styling upgrade.

Splash Guards - Front and Rear

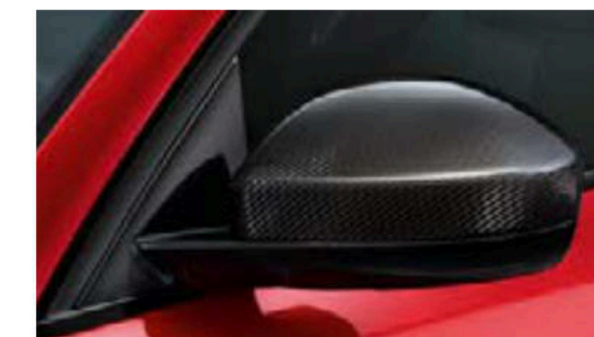
Jaguar branded splash guards complement the lines of your vehicle, reduce spray and provide protection from dirt and stone chippings.

Stainless Steel Undershield - Front and Rear³

Manufactured from stainless steel, the stylish front and rear undershields feature a premium polished finish.



Fixed Side Steps



Carbon Fiber Mirror Covers

¹Recommend to be fitted with front splash guards to protect against the build up of snow, ice or mud in extreme conditions.
²Fitment may affect the all-terrain capability of the vehicle. ³Rear undershield not available with towing systems.



6 CHOOSE YOUR OPTIONS & JAGUAR GEAR

Configure your vehicle at jaguarusa.com

INTERIOR ACCESSORIES

Luxury Carpet Mats

Luxurious, tailored 2,050g/m² pile front carpet mats with embossed Jaguar logo and Nubuck edge binding. The premium mats provide a well appointed finishing touch to the interior.

Rubber Mats

Hard wearing Jaguar branded rubber mats provide added protection for your vehicle's carpets.

Luggage Compartment Luxury Carpet Mat with Bumper Protector

Luxurious soft luggage mat with Jaguar logo. Deep premium 2,050g/m² pile with Nubuck edging. Integrated with a bumper liner, which provides protection to the bumper from scuffs and scratches as well as preventing clothing from collecting dirt when loading and unloading. The liner can be stowed under the mat when not in use.

Luggage Compartment Rubber Mat

This premium mat is tailored specifically to protect the luggage compartment. Light and durable, it is easily removable for cleaning.

Aperture Retention Net

The aperture retention net prevents small items from falling out of the cargo space when the tailgate is opened and maximizes packing space. Manufactured from premium lightweight materials including high grade machined aluminum to ensure robust quality.

Luggage Compartment Partition¹

The luggage compartment partition is designed to prevent cargo from entering the passenger compartment.

Luggage Compartment Rails

Luggage compartment rails with sliding 'D' loops, locking system and receiver, help increase the flexibility of cargo space storage and also allow fitment of the luggage compartment retention kit.

Gearshift Paddles - Aluminum²

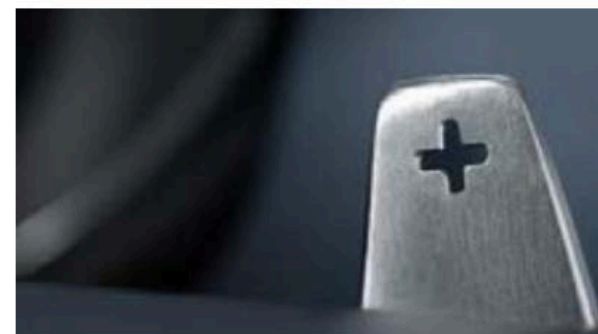
Enhancement steering wheel gearshift paddles offered in a premium aluminum material providing a high quality finish. Manufactured from high quality machined aluminum, the paddles are hand brushed for a premium finish and anodized to ensure they will not deteriorate with wear.

Sport Pedal Covers

Made from stainless steel and rubber, the pedal kit fits securely over existing pedals for a contemporary, sporting appearance.

Personalized Sill Treadplates - Illuminated

Elegantly styled stainless steel sill treadplate finisher for driver or passenger doors. Illuminate when either the driver or passenger doors are opened. Highlighted by soft Phosphor Blue lighting. Allows customer to specify a monochrome 'motif' in a choice of approved typefaces/scripts.



Aluminum Gearshift Paddles



Personalized Sill Treadplates - Illuminated

TOURING ACCESSORIES

Roof Cross Bars^{3,4}

Cross bars enable the use of a wide range of roof carrying accessories. They feature a unique release mechanism allowing for them to be easily fitted or removed without the use of tools. Cross bar options offered for vehicles with and without roof rails⁴.

Ski/Snowboard Holder⁵

A safe and secure Jaguar branded system for transporting winter sports equipment. Incorporates slider rails for easy loading.

Roof Sport Box⁵

Spacious 11.3 cu.ft. capacity lockable roof box designed for sports equipment, measuring 81.1 x 33 x 13.3 inches.

Roof Mounted Cycle Carrier^{5,6}

An easy to fit, roof mounted, lockable cycle carrier which carries one bike per holder. A maximum of three holders can be fitted.



Roof Mounted Cycle Carrier

OTHER ACCESSORIES

iPhone® Connect and Charge Dock⁷

The iPhone connect and charge dock has been designed to allow visibility of the phone while charging, utilizing the cupholder space in the central console. When connected, the iPhone's media is accessible and has the ability to be controlled via the integrated infotainment / audio system. The 'cut-out' design of the holder is such that the home button is also accessible for use when parked. The iPhone USB charger can be easily disconnected if the USB connection is required for other use.

Click and Go Base⁸

The Click and Go range is a multi-purpose seat-back system for second row passengers. The versatile Click and Go Base fixes between the headrest mountings and further attachments can be added to hold tablets, bags and shirts or jackets. Each attachment is sold separately. The base can be easily removed when not in use.

Click and Play⁹

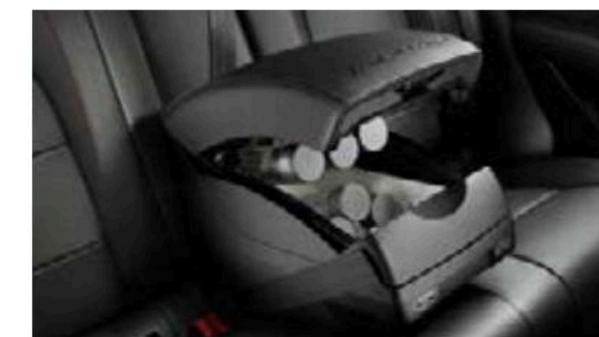
Click and Play is a removable tablet holder attachment which is available for various tablets, and can be easily positioned in multiple angles for in cabin comfort and rear seat entertainment.

Sunshades - Rear and Side

Easy to install and remove, these clip-in sunblinds fold for convenient storage. Supplied with Jaguar branded storage bag.

Center Armrest Cooler/Warmer Box

Food and drinks chiller and warmer that acts as a rear center armrest. With a leather-covered top, it is held in place by the center seat belt and powered from the rear auxiliary socket. Ideal for long trips with the family.



Center Armrest Cooler/Warmer Box

¹Not compatible with luggage compartment partition net. ²Only available on R-Dynamic vehicles. ³Load capacity will differ depended on cross bar selected, contact your nearest Jaguar Retailer, for more information.

⁴Roof rails are a line fit option and not available as accessory. ⁵Only available when accessory cross bars are selected. ⁶Part fitment varies depending on bike size, contact your nearest Jaguar Retailer, for more information.

⁷iPhone® is a registered trademark of Apple Inc., registered in the US and other countries, contact your nearest Jaguar Retailer, for more information on iPhone compatibility.

⁸Required for Click and Go accessories to be selected. Not available on E-PACE with P250 engine. ⁹Only available when optional Click and Go - Base is selected.

TECHNICAL DETAILS

Configure your vehicle at jaguarusa.com



Vehicle Height

With roof rails 64.8"
With roof antenna 64.9"

Headroom

Maximum front headroom with Fixed Panoramic roof fitted 39.2"
Rear headroom 38.2"

Legroom

Maximum front legroom 40.6"
Maximum rear legroom 35.1"

Cargo space Capacity

Rear seats upright
Height 29.4", Width 51.6"
Cargo space volume 20.4 cu.ft*
Cargo space width between arches 41.6"
Length at floor 31.7"

Rear seats down

Height 29.4" Width 51.6"
Cargo space volume 43.6 cu.ft*
Cargo space width between arches 41.6"
Length at floor 61.7"

Turning Circle

Curb-to-curb 37.4ft
Wall-to-wall 39.1ft
Turns lock-to-lock 2.31



ENGINE	P250	P300
Bore (mm)	83	83
Stroke (mm)	92.3	92.3
Compression ratio (†)	10.5 +/-0.5	10.5 +/-0.5
BRAKES		
Front type	Ventilated disc	Ventilated disc
Front diameter (mm)	325	349
Rear type	Solid disc	Solid disc
Rear diameter (mm)	300	300
Park Brake	Electric Park Brake (EPB) integrated into brake caliper	
WEIGHTS (LBS) ¹		
Curb Weight	4,035	4,175
Gross Vehicle weight	5,290	5,290
Maximum mass on each axle (front)	2,865	2,910
Maximum mass on each axle (rear)	2,645	2,645
TOWING (LBS)		
Unbraked trailer	1,653	1,653
Maximum towing	3,968	3,968
Maximum coupling point/nose weight	220	220
Maximum vehicle and trailer combination/Gross Train weight	9,259	9,259
ROOF CARRYING (LBS)		
Maximum roof load (including roof rails)	165	165
PERFORMANCE		
Maximum speed mph	143	152
Acceleration 0-60mph secs	6.6	5.9
Fuel tank capacity - usable (US gallons)	18.1	18.1
CO ₂ Combined emissions (g/km)	174	181

● Standard — Not Available

*When Tire Repair System is fitted.

¹Weights reflect vehicles to standard specifications. Optional extras increase weight.

VEHICLE SHOWN: E-PACE R-DYNAMIC SE IN YULONG WHITE WITH OPTIONAL EQUIPMENT

SPECIAL VEHICLE OPERATIONS



Special Vehicle Operations (SVO) designs and engineers products that amplify Jaguar and Land Rover core brand values; focusing on luxury, performance and capability.

Our team of specialists is completely focused on enhancing and personalizing our relationship with our most discerning and enthusiastic customers - delivering experiences that our customers will love for life.

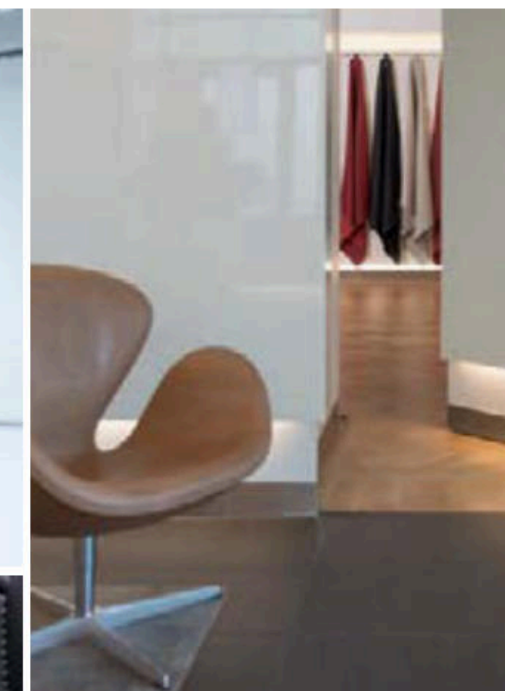
SVO is responsible for the creation of a suite of halo products that showcase the pinnacle of Jaguar design and engineering capabilities, enabling our customers to indulge their passion for spectacular new vehicles.

THE NEW SVO TECHNICAL CENTER

In the heart of the British Midlands is SVO's brand new Technical Center. This state-of-the-art facility represents a \$25 million dollar investment by Jaguar Land Rover, and features four zones designed to support the creation of truly breath-taking vehicles. In addition to the Commissioning and Presentation suites, our manufacturing center is responsible for the assembly and hand-finishing of SVO halo and Collector's Edition vehicles, and a world-class paint facility ensures an exquisite finish for every vehicle we create.

BESPOKE BY SVO

Bespoke by SVO was born out of an innate understanding of what our most discerning clients value more than anything else - to own something completely unique to them. Something only they can have, reflecting who they are and what they hold most dear. With that in mind, SVO developed innovative Commissioning and Presentation suites enabling creation of the most refined and luxurious vehicles in the world. This special new facility is housed within the new SVO Technical Center in Warwickshire, England.



THE WORLD OF JAGUAR

Choose the E-PACE and you're joining the exciting World of Jaguar.

ICE DRIVE EXPERIENCES

Take your driving to the next level with the Jaguar Land Rover Ice Drive Experience. From 2017, we are offering an adventure in Arjeplog, Sweden, that will test and develop your performance driving skills in extreme conditions. It's a rare chance for owners and enthusiasts to tackle some of the harshest and most challenging tracks on earth, under the skilled guidance of our experts. Our driving instructors are of the highest-caliber and will be with you every step of the way – ready to impart years of driving wisdom. You will dance on ice, glide around some of the most awe-inspiring corners imaginable and realize the true exhilarating potential of Jaguar and Land Rover.

If you'd like to be part of the next adventure, find out more by visiting jaguarusa.com

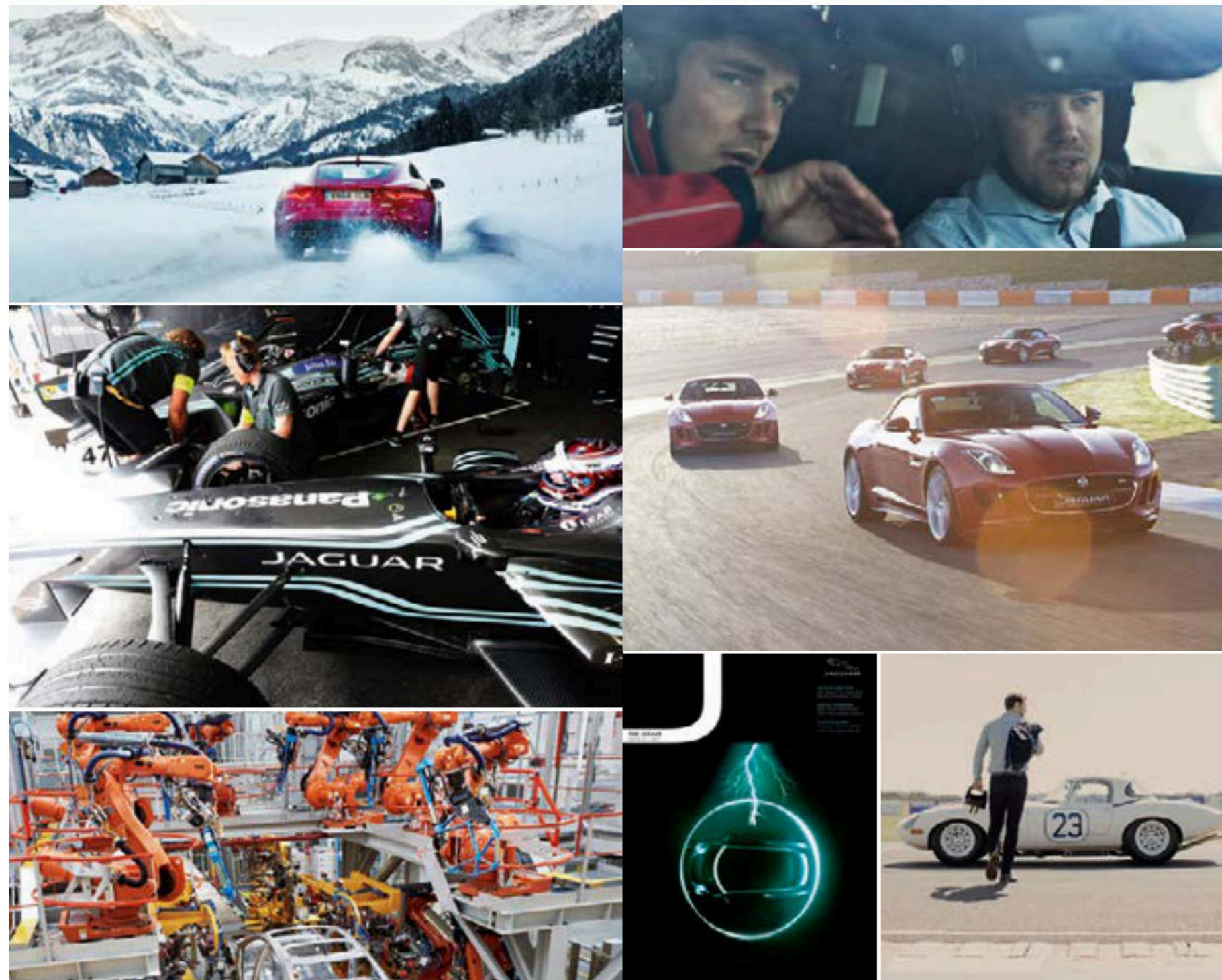
FORMULA E

Jaguar's reputation for performance, technology and design was forged by the world's most challenging circuits and championships. From Le Mans to Formula 1, and now Formula E, the grid is our test-bed. Formula E provides the perfect proving ground for electric vehicle technology in a high performance environment. The racing series accelerates the development of Jaguar's electric powertrains. With every race, Formula E helps Jaguar engineers create better electric vehicles.

BEHIND THE SCENES

Our factory tours give you the unique opportunity to experience the whole process of how our cars are brought to life – from the molding of sheet metal to those intricate final touches. At our state-of-the-art production facilities, you'll get to see how skilled technicians and sophisticated machines work seamlessly together to perfect some of Jaguar's most breathtaking cars.

Find out more at jaguarusa.com



TRACK DAYS

There's no better way to get to know Jaguar than by taking a drive. The Jaguar Experience offers a range of unique opportunities to really find out what it feels like to get the most out of a Jaguar. Our track experiences allow you to push yourself and cars from the incredible Jaguar range to the limit.

Find out more by visiting jaguarusa.com

JAGUAR COLLECTION

The latest range from the Jaguar Collection has been crafted with the same design execution and attention to detail that goes into all of our vehicles. This is evident in our clothing range, premium leather items and luxury travel goods. To celebrate Jaguar's heritage, we also have a collection that honors past achievements and features race inspired gift items and apparel.

Visit shop.jaguarusa.com to browse the Jaguar collection.

THE JAGUAR MAGAZINE

This is our own vibrant, cosmopolitan and contemporary magazine. Produced by a team of enthusiastic designers and feature writers, it goes behind the scenes at Jaguar as well as providing insight into the world of luxury, design, style and travel.



CONTENTS

PERSONALIZATION

LOCATE A RETAILER

BUILD YOUR OWN



AT YOUR SERVICE

As well as providing a range of exclusive services and lifestyle products, the World of Jaguar makes owning and driving carefree and easy.

JAGUAR ELITECARE

Enjoy your Jaguar with peace of mind. The E-PACE is backed by Jaguar EliteCare, our exceptional 5 year / 60,000 mile coverage program including New Vehicle Limited Warranty, Complimentary Scheduled Maintenance, Roadside Assistance and Jaguar InControl Remote & Protect™.

GENUINE PARTS

Jaguar Genuine Parts are designed, tested and manufactured to our uncompromising standards for quality, fit and durability. Each part is engineered specifically for your E-PACE to contribute to optimum performance and to help maximize its lifespan.

FLEET & BUSINESS

Jaguars are dynamic and distinctive vehicles that help companies express the unique character and personality of their business. We are committed to providing customer-focused aftersales services, ensuring that every Jaguar performs to the highest standard and in the most cost-efficient way for businesses. Visit jaguarusa.com for more information.

JAGUAR ASSISTANCE

Jaguar Assistance provides assistance in motoring emergencies, from immobilization due to breakdown or accident to minor problems such as punctures. You can rely on our roadside assistance, whatever the situation, anywhere in North America during the vehicles warranty period.

JAGUAR FINANCIAL SERVICES

New or used, for personal or business use, we have a finance option that puts you in complete control. Please speak to your local Jaguar Retailer to find out more.

IMPORTANT NOTICE

Jaguar Land Rover Limited is constantly seeking ways to improve the specification, design and production of its vehicles and alterations take place continually. While every effort is made to produce up-to-date literature, this brochure should not be regarded as an infallible guide to current specifications, nor does it constitute an offer for the sale of any particular vehicle. Distributors and Retailers are not agents of Jaguar Land Rover Limited by any express or implied undertaking or representation. Comparisons are based on manufacturer's own data and testing prior to publication.

COLORS

The colors reproduced here are subject to the limitations of the printing process and may therefore vary slightly from the actual vehicle. The company reserves the right to alter or withdraw any color finish without notice. Some of these colors may not be obtainable in your country. Please check availability of colors and current specifications with your Jaguar Retailer. Distributors and retailers are not agents of Jaguar Land Rover Limited and have absolutely no authority to bind Jaguar Land Rover Limited to any express or implied undertaking or representation.

ENVIRONMENTAL INNOVATION AT JAGUAR

Jaguar is committed to reducing dependency on fossil fuels, using fewer natural resources and creating less waste as part of our approach to responsible and sustainable business development.

Search 'Jaguar Environmental Innovation' for more details.

Castrol EDGE Professional recommended by Jaguar.

Meridian is the registered trademark of Meridian Audio Ltd. The Bluetooth® word mark and logos are owned by the Bluetooth SIG, Inc. and any use of such marks by Jaguar Land Rover Limited is under license. iPhone is a trademark of Apple Inc., registered in the US and other countries. The navigation system must always be used in conditions that will not affect the driver's ability to drive safely or affect the safety of other road users.

VEHICLE SHOWN FRONT AND BACK COVER: E-PACE FIRST EDITION IN CALDERA RED
VEHICLE SHOWN LEFT: E-PACE S IN BORASCO GREY WITH OPTIONAL EQUIPMENT

Jaguar Land Rover North America, LLC
555 MacArthur Boulevard
Mahwah, NJ 07430-2327
jaguarusa.com

1X5401810C05BUSEN01P

