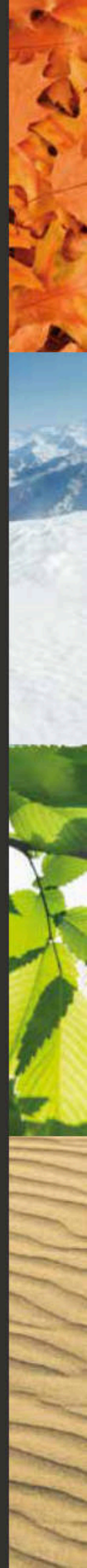


2 0 1 7 C O M P A S S

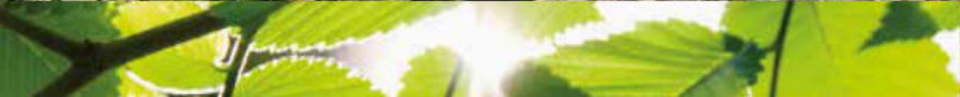


Jeep.





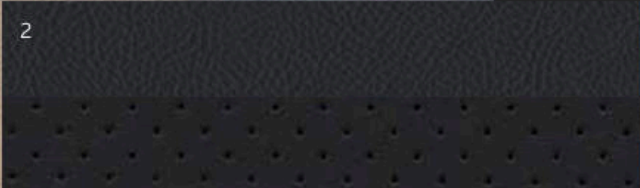
ENTER THE WORLD OF JEEP® COMPASS.



HIGH ALTITUDE



INTERIOR: 1) Axis Perforated McKinley Leather trim: Light Pebble Beige (standard)
2) Axis Perforated McKinley Leather trim with Light Slate Gray accent stitching:
Dark Slate Gray (standard) 3) Axis Perforated McKinley Leather trim with Light Frost
accent stitching: Saddle Brown (available)



STANDARD

- 2.0L DOHC 16V dual Variable Valve Timing (VVT) 4-cylinder engine
- Continuously Variable Transaxle II (CVT2) automatic with AutoStick
- Automatic halogen headlamps with Black bezels
- Body-color, power, heated manual folding mirrors
- Air conditioning with manual controls
- Remote Start System
- Power windows with driver's 1-touch down
- Outside temperature display in odometer
- Remote Keyless/Illuminated Entry
- Sentry Key® Theft Deterrent System
- Radio 130 including CD/MP3 player with audio input jack for mobile devices and SiriusXM® Satellite Radio^{1*} with 1-year trial subscription
- Uconnect® Voice Command² hands-free with Bluetooth®
- Perforated leather-trimmed bucket seats
- Leather-wrapped steering wheel with audio and cruise controls
- Heated front seats
- Power 6-way adjustable driver's seat with manual lumbar adjuster

- Power sunroof with express-open/close, sunshade and tilt features
- Fully independent touring-tuned suspension
- 4-wheel antilock ventilated front disc brakes; rear drum
- Body-color grille with Chrome mesh and grille slot surrounds
- Body-color liftgate appliqué with Chrome insert
- Body-color door handles
- Chrome roof rails and exhaust tip
- Unique High Altitude badge
- Premium fog lamps with Chrome bezels
- Acoustic glass windshield
- P215/60R17 BSW All-Season Touring tires
- Compact spare tire
- Deep-tint glass windows
- Luxury front and rear floor mats
- Speed-sensitive power door locks
- 12-volt and 115-volt power outlets
- Front-seat height-adjuster shoulder belts
- Rear 60/40 split-folding, reclining seats
- Rearview auto-dimming mirror with microphone
- Sliding sun visors with mirrors

- Front-seat active head restraints³
- Advanced multistage driver and front-passenger air bags⁴
- Supplemental front and rear side-curtain air bags⁴
- Supplemental front seat-mounted side air bag⁴
- Electronic Stability Control (ESC)⁵
- Brake Assist
- Electronic Roll Mitigation (ERM)
- Tire pressure monitoring warning lamp
- 4 speakers

AVAILABLE

- 2.4L DOHC 16V dual VVT 4-cylinder engine with 6-speed PowerTech automatic transaxle and AutoStick
- Air conditioning with automatic temperature controls
- ParkView® Rear Back-Up Camera⁶ (packaged with Radio 430)
- Freedom Drive I active full-time 4-wheel drive (4WD) with selectable LOCK mode (requires 2.4L engine)
- Radio 430 — 6.5-inch touchscreen display, CD/DVD/MP3 player, 40GB hard-drive (28GB available storage) and audio input jack for mobile devices (packaged with ParkView Rear Back-Up Camera⁶)

- Radio 430N — 6.5-inch touchscreen display, Garmin® GPS Navigation, CD/DVD/MP3 player, 40GB hard-drive (28GB available storage), audio input jack for mobile devices and SiriusXM Travel Link¹ with 5-year subscription
- 4-wheel antilock disc brakes (standard on 4x4 models)
- P215/55R18 BSW All-Season Performance tires (packaged with 18-inch polished aluminum wheels with Mineral Gray pockets)

PREMIUM SOUND GROUP: Boston Acoustics® 9-speaker system with subwoofer and 2 flip-down liftgate speakers

SECURITY AND CARGO CONVENIENCE GROUP: Security alarm, soft tonneau cargo cover, universal garage door opener, tire pressure monitoring display and Electronic Vehicle Information Center (EVIC)

SMOKER'S GROUP: Removable ashtray and lighter element



17-inch Polished Aluminum with Granite Painted Pockets (standard)



18-inch Polished Aluminum with Mineral Gray Pockets (available)

L A T I T U D E



INTERIOR: 1) McKinley Vinyl/Sport Mesh Cloth with Tangerine accent stitching; Light Pebble Beige (standard) 2) McKinley Vinyl/Sport Mesh Cloth with Light Slate Gray accent stitching; Dark Slate Gray/Black (standard)

STANDARD

- 2.0L DOHC 16V dual Variable Valve Timing (VVT) 4-cylinder engine
- Continuously Variable Transaxle II (CVT2) automatic with AutoStick
- Automatic halogen headlamps with Black bezels
- Body-color, power, heated, manual folding mirrors
- Premium fog lamps
- Premium vinyl/sport mesh cloth seats
- Heated front seats
- Leather-wrapped steering wheel with audio and cruise controls
- Air conditioning with manual controls
- Power windows with driver's 1-touch down
- Remote Start System
- Remote Keyless/Illuminated Entry
- Sentry Key® Theft Deterrent System
- Radio 130 including CD/MP3 player with audio input jack for mobile devices and SiriusXM® Satellite Radio¹ with 1-year trial subscription
- Uconnect® Voice Command² hands-free with Bluetooth®
- Fully independent touring-tuned suspension

- Silver roof rails
- Body-color grille with Chrome mesh and grille slot surrounds
- Body-color door handles and liftgate appliqué with Chrome insert
- P205/70R16 BSW All-Season tires
- Rearview auto-dimming mirror with microphone
- Tire pressure monitoring warning lamp
- 12-volt and 115-volt power outlets
- Acoustic glass windshield
- Deep-tint glass windows
- Rear 60/40 split-folding, reclining seats
- Luxury front and rear floor mats
- Electronic Stability Control (ESC)³
- Electronic Roll Mitigation (ERM)
- Advanced multistage driver and front-passenger air bags⁴
- Supplemental front and rear side-curtain air bags⁴
- Supplemental front seat-mounted side air bags⁴
- 4-wheel antilock ventilated front disc brakes; rear drum
- Front-seat active head restraints³
- 4 speakers

AVAILABLE

- 2.4L DOHC 16V dual VVT 4-cylinder engine with 6-speed PowerTech automatic transaxle and AutoStick
 - Air conditioning with automatic temperature controls
 - ParkView® Rear Back-Up Camera⁵ (packaged with Radio 430)
 - Radio 430 – 6.5-inch touchscreen display, CD/DVD/MP3 player, 40GB hard-drive (28GB available storage) and audio input jack for mobile devices
 - Radio 430N — 6.5-inch touchscreen display, Garmin® GPS Navigation, CD/DVD/MP3 player, 40GB hard-drive (28GB available storage), audio input jack for mobile devices and SiriusXM Travel Link¹ with 5-year trial subscription
 - Freedom Drive I active full-time 4-wheel drive (4WD) with selectable LOCK mode (requires 2.4L engine)
 - 4-wheel antilock brakes (4x4 models only)
- ALL-WEATHER CAPABILITY GROUP:** Tow hooks, engine block heater, all-season floor mats, daytime running headlamps and 17-inch aluminum wheels with All-Terrain tires (4x4 models only)
- PREMIUM SOUND GROUP:** Boston Acoustics® 9-speaker system with subwoofer and 2 flip-down liftgate speakers

SUN AND SOUND GROUP: Power express-open/close sunroof, Boston Acoustics 9-speaker system with subwoofer and 2 flip-down liftgate speakers

SECURITY AND CARGO CONVENIENCE GROUP: Security alarm, soft tonneau cargo cover, universal garage door opener, tire pressure monitoring display and Electronic Vehicle Information Center (EVIC)

TRAILER TOW PREP GROUP: Engine oil cooler, full-size spare tire and trailer-tow wiring harness (4x4 models only; requires 2.4L engine; additional Jeep® towing accessories may be required)

FREEDOM DRIVE II® OFF-ROAD GROUP: Continuously Variable Transaxle II Low (CVT2L) automatic with 19:1 crawl ratio, 4-wheel-drive Off-Road mode and Hill Descent Control with grade-sensing, Hill Start Assist, Brake-Lock Differential, skid plates on fuel tank, transmission and engine oil pan, 2 front and 1 rear tow hooks, trailer-tow wiring harness, 140-amp alternator, 4-way manual driver-seat height adjuster, bright exhaust tip, engine oil cooler, all-season floor mats, full-size spare tire, Trail Rated® badge and 17-inch Tech Silver aluminum wheels with P215/65R17 All-Terrain tires (requires 2.4L engine; 4x4 models only)

SMOKER'S GROUP: Removable ashtray and lighter element



16-inch Aluminum (standard on FWD models)



17-inch Tech Silver Aluminum (standard on 4x4 models)



18-inch Chrome-clad Aluminum (available)

SPORT SE



INTERIOR: McKinley Vinyl/Sport Mesh Cloth with Light Slate Gray accent stitching; Dark Slate Gray/Black (standard)

STANDARD

- 2.0L DOHC 16V dual Variable Valve Timing (VVT) 4-cylinder engine
- Continuously Variable Transaxle II (CVT2) automatic with AutoStick
- Premium vinyl/sport mesh cloth front bucket seats
- Heated front seats
- Air conditioning with manual controls
- Rearview auto-dimming mirror with microphone
- Leather-wrapped steering wheel with mounted audio and cruise controls
- Uconnect® Voice Command² hands-free with Bluetooth®
- Radio 130 including CD/MP3 player with audio input jack for mobile devices and SiriusXM® Satellite Radio¹ with 1-year trial subscription
- Mineral Gray roof rails with Jeep® and Compass badging
- 4x4 badging in Mineral Gray (4x4 only)
- Rear bumper with Mineral Gray step pads
- Body-color grille with Black mesh and Mineral Gray grille slot surrounds
- Halogen headlamps with Black bezels
- Mineral Gray liftgate appliqué

- Unique Sport SE badge
- Premium fog lamps with Mineral Gray bezels
- Bright exhaust tip
- Deep-tint sunscreen glass
- Acoustic glass windshield
- P215/55R18 BSW All-Season Performance tires
- Compact spare tire
- 12-volt accessory power outlet
- Outside temperature display in odometer
- Illuminated cup holders
- Sliding sun visors with mirrors
- Driver-seat height adjuster
- Front height-adjuster shoulder belts
- Rear 60/40 split-folding seat
- Manual windows and door locks
- Carpeted load floor cargo area
- Electronic Stability Control (ESC)³
- Brake Assist
- Electronic Roll Mitigation (ERM)
- Fully independent touring-tuned suspension
- 4-wheel antilock ventilated front disc brakes; rear drum

- Sentry Key® Theft Deterrent System
- Tire pressure monitoring warning lamp
- Advanced multistage driver and front-passenger air bags⁴
- Supplemental front and rear side-curtain air bags⁴
- Supplemental front seat-mounted side air bags⁴
- Front-seat active head restraints³
- 4 speakers

AVAILABLE

- 2.4L DOHC 16V dual VVT 4-cylinder engine with 6-speed PowerTech automatic transaxle and AutoStick (4x4)
- Freedom Drive I active full-time 4-wheel drive (4WD) with selectable LOCK mode (requires 2.4L engine)
- 4-wheel antilock disc brakes (standard on 4x4 models)
- ParkView® Rear Back-Up Camera⁵ (requires Power Value Group; packaged with Radio 430)
- Radio 430 — 6.5-inch touchscreen display, CD/DVD/MP3 player, 40GB hard-drive (28GB available storage) and audio input jack for mobile devices (packaged with ParkView Rear Back-Up Camera⁵)

POWER VALUE GROUP: Automatic headlamps, Remote Keyless/Illuminated Entry, power, heated, manual folding mirrors, power windows with driver's 1-touch down feature, body-color door handles and liftgate appliqué, and speed-sensitive power door locks (requires air conditioning)

SMOKER'S GROUP: Removable ashtray and lighter element

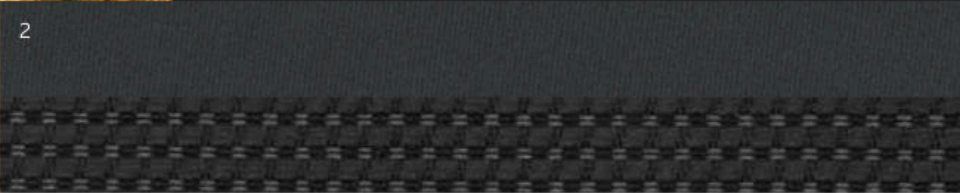
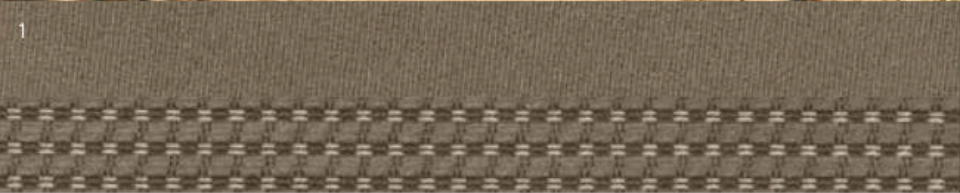


18-inch Polished Aluminum with Mineral Gray Pockets (available)

SPORT



INTERIOR: 1) Duet Cloth/Cubic Cloth: Light Pebble Beige (standard) 2) Duet Cloth/Cubic Cloth: Dark Slate Gray (standard)



STANDARD

- 2.0L DOHC 16V dual Variable Valve Timing (VVT) 4-cylinder engine
- 5-speed manual transmission with Hill Start Assist (HSA)
- Premium cloth front bucket seats
- Air conditioning with manual controls
- Rearview auto-dimming mirror with microphone
- Steering wheel-mounted cruise control
- Tire pressure monitoring warning lamp
- Uconnect® Voice Command² hands-free with Bluetooth®
- Radio 130 including CD/MP3 player with audio input jack for mobile devices and SiriusXM® Satellite Radio¹ with 1-year trial subscription
- 4-wheel antilock ventilated front disc brakes; rear drum
- Fully independent touring-tuned suspension
- Rack and pinion, firm-feel power steering
- Body-color grille with Black mesh and Chrome grille slot surrounds
- Black door handles
- Halogen headlamps with Black bezels
- Silver roof rails
- Premium fog lamps

- Deep-tint sunscreen glass
- Acoustic glass windshield
- P205/70R16 BSW All-Season tires
- Compact spare tire
- 12-volt accessory power outlet
- Outside temperature display in odometer
- Manual windows and door locks
- Carpeted load floor cargo area
- Rear 60/40 split-folding seat
- Illuminated cup holders
- Sliding sun visors with mirrors
- Driver-seat height adjuster
- Front height-adjuster shoulder belts
- Electronic Stability Control (ESC)⁵
- Brake Assist
- Electronic Roll Mitigation (ERM)
- Sentry Key® Theft Deterrent System
- Advanced multistage driver and front-passenger air bags⁴
- Supplemental front and rear side-curtain air bags⁴
- Supplemental front seat-mounted side air bags⁴
- Front-seat active head restraints³
- 4 speakers

AVAILABLE

- 2.0L DOHC 16V dual VVT 4-cylinder engine with Continuously Variable Transaxle II (CVT2) automatic and AutoStick (4x2 only)
- 2.4L DOHC 16V dual VVT 4-cylinder with 5-speed manual (standard on Sport 4x4)
- 2.4L DOHC 16V dual VVT 4-cylinder with 6-speed PowerTech automatic transaxle and AutoStick
- 2.4L DOHC 16V dual VVT 4-cylinder engine with Continuously Variable Transaxle II Low (CVT2L) automatic (4x4 models)
- ParkView® Rear Back-Up Camera⁶ (requires Power Value Group; packaged with Radio 430)
- Radio 230 — 6-CD/DVD/MP3 player and audio input jack for mobile devices
- Radio 430 — 6.5-inch touchscreen display, CD/DVD/MP3 player, 40GB hard-drive (28GB available storage) and audio input jack for mobile devices (packaged with ParkView Rear Back-Up Camera⁶)
- 4-wheel antilock disc brakes (standard on 4x4 models)
- P215/60R17 BSW All-Season Touring tires
- Freedom Drive I active full-time 4-wheel drive (4WD) with selectable LOCK mode (requires 2.4L engine)

POWER VALUE GROUP:

Automatic headlamps, Remote Keyless/Illuminated Entry, power, heated, manual folding mirrors, power windows with driver's 1-touch down feature, body-color door handles and liftgate appliqué, and speed-sensitive power door locks (requires air conditioning)

ALL-WEATHER CAPABILITY GROUP: Tow hooks, engine block heater, all-season floor mats, daytime running headlamps and 17-inch aluminum wheels with All-Terrain tires (4x4 models only)

SMOKER'S GROUP: Removable ashtray and lighter element

FREEDOM DRIVE II® OFF-ROAD GROUP: Continuously Variable Transaxle II Low (CVT2L) automatic with 19:1 crawl ratio, 4-wheel drive Off-Road mode and Hill Descent Control with grade-sensing, HSA, Brake-Lock Differential, skid plates on fuel tank, transmission and engine oil pan, 2 front and 1 rear tow hooks, trailer-tow wiring harness, 140-amp alternator, 4-way manual driver-seat height adjuster, bright exhaust tip, engine oil cooler, all-season floor mats, full-size spare tire, Trail Rated® badge and 17-inch Tech Silver aluminum wheels with P215/65R17 All-Terrain tires (requires 2.4L engine; 4x4 models only)



16-inch Aluminum (standard on FWD models)



17-inch Tech Silver Aluminum (standard on 4x4 models)

C O L O R S & S P E C I F I C A T I O N S

Black

Granite Crystal Metallic¹

Billet Silver Metallic

True Blue Pearl¹

Deep Cherry Red Crystal Pearl¹

Mojave Sand¹

Bright White

Redline Red 2-Coat Pearl
Exclusive to Sport SE

EXTERIOR DIMENSIONS

(inches unless noted; base model/ Trail Rated[®])

Wheelbase	103.7
Overall length	175.1
Overall width	71.4
Track (front / rear)	59.8 / 59.8
Height	65.0
Ground clearance	8.1 / 9.1
Approach angle (degrees)	19.5 / 29.6
Breakover angle (degrees)	20.6 / 23.6
Departure angle (degrees)	28.5 / 31.2
Water fording depth ⁷ (Off-Road version)	19

INTERIOR DIMENSIONS

(inches unless noted; front / rear)

Seating capacity	5 adults
Head room (front without sunroof / rear)	40.7 / 39.9
Leg room	40.6 / 39.4
Shoulder room	54.6 / 54.0
Hip room	52.3 / 51.0
Cargo volume (rear seat up / folded down) (cu ft)	22.7 / 53.6

CAPACITIES / WEIGHTS / TOWING

(pounds unless noted)

Fuel tank (gal) (4x2 / 4x4)	13.6 / 13.5
Base curb weight	
CVT2 (Sport 2.0L 4x2)	3,184.83
5-speed manual transaxle (Sport 2.0L 4x2 / 2.4L 4x4)	3,106.51 / 3,251.87
6-speed automatic transaxle (Sport 2.4L 4x2 / 4x4)	3,187.2 / 3,328.44
CVT2L (Sport 4x4)	3,334.77
Payload capacity (includes occupants and cargo)	925
Maximum Gross Vehicle Weight Rating (GVWR) (4x4)	4,575
Maximum loaded trailer weight (requires Trailer Tow Prep Group)	2,000
Tongue load limit (requires Trailer Tow Prep Group)	225

Note: for specific towing details, discuss your plans with your Jeep[®] dealer, who will help you select the right equipment to meet your specifications.

POWERTRAINS

Engine	2.0L DOHC 16V dual Variable Valve Timing (VVT) I-4	2.4L DOHC 16V dual VVT I-4
Displacement (cu in / cc)	121.9 / 1,998	144 / 2,360
Horsepower (SAE net @ rpm)	158 @ 6,400	172 @ 6,000
Torque (SAE net lb-ft @ rpm)	141 @ 5,000	165 @ 4,400

Fuel system Sequential multiport, electronic fuel injection
 Fuel recommendation Unleaded regular, 87 octane (R+M) / 2
 Exhaust system Oversized displacement muffler for reduced back pressure and noise; long-life design

¹Not available on Sport SE.

TRANSAXLES

5-speed manual with overdrive, ratio range (:1) 3.77 – 0.72 (1st – 5th); overall top gear ratio: 2.97 (2.0L / 2.4L) Std.
 6-speed PowerTech automatic transaxle with AutoStick, ratio range (:1) 4.21 – 0.77 (1st – 6th); overall top gear ratio: 2.60 (2.4L) Opt.
 Continuously Variable Transaxle II (CVT2) automatic with AutoStick and 30mm high-strength multilayer steel drive belt, ratio range (:1) 2.35 – 0.39; overall top gear ratio: 2.41 (2.0L) Opt.
 Continuously Variable Transaxle II Low (CVT2L) automatic with 30mm high-strength multilayer steel drive belt, ratio range (:1) 2.35 – 0.39; overall top gear ratio: 3.21, unique final drive belt with 19:1 crawl ratio feature (requires Freedom Drive II[®] Off-Road Group and 2.4L engine) (4x4) Opt.

DRIVE SYSTEMS

Front-wheel-drive (2WD) transaxle with constant-velocity joints and equal-length half-shafts Std.
 Freedom Drive I active full-time 4-wheel drive (4WD) with selectable LOCK (requires 2.4L) (4x4) Opt.
 Freedom Drive II active full-time 4WD with selectable LOCK mode, Off-Road mode with Hill Descent Control and grade-sensing (requires 2.4L engine with CVT2L and Freedom Drive II Off-Road Group) (4x4) Opt.

BODY / SUSPENSION / CHASSIS

Body design

Unibody steel construction with a structural safety cage utilizing advanced hot-stamped, tailor-rolled, dual-phase steel technologies and advanced joint design for added strength, reduced weight and improved NVH control; front crumple zone
 Suspension, touring-tuned

Front Independent with MacPherson struts, coil springs over gas-charged shock absorbers and stabilizer bar
 Rear Independent multilink with coil springs, gas-charged shock absorbers and link-type stabilizer bar

Steering Rack and pinion with hydraulic power assist
 Overall ratio 16.4:1

Turning diameter (curb-to-curb) ft, 17-inch / 18-inch wheels 35.6 / 37.2
 Turns (lock-to-lock), 17-inch / 18-inch wheels 2.88 / 2.76

Brake system

ABS 4-wheel disc hydraulic, power-assisted, 11.5-inch vented front / 10.3-inch solid rear Std. 4x4 models
 ABS 11.5-inch vented front / 9.0-inch drum rear Std. 4x2 models
 Parking brake type Drum-in-hat

Electronic Stability Control (ESC)⁵

4-channel, 4-wheel antilock with active wheel-speed, vehicle-speed, steering wheel-angle, yaw-rate and lateral-acceleration sensors, vehicle stability management with 2-stage activation switch, All-Speed Traction Control, Brake Assist, Electronic Roll Mitigation (ERM) and Electronic Brake-Force Distribution Std.

OWNER SUPPORT

THE JEEP® BRAND OFFERS SOME OF THE BEST OWNERSHIP SUPPORT PROGRAMS AVAILABLE ANYWHERE.

5 YEAR/60,000 MILE
POWERTRAIN LIMITED WARRANTY

WARRANTIES Jeep® Brand vehicles are covered by a 3-Year/36,000-Mile Basic Limited Warranty (excludes normal maintenance and wear items), as well as a 5-Year/60,000-Mile Powertrain Limited Warranty that is fully transferable. See your dealer for complete details and a copy of the 5-Year/60,000-Mile Powertrain Limited Warranty.



VEHICLE PROTECTION

MOPAR® VEHICLE PROTECTION Mopar Vehicle Protection® has a vested interest in your satisfaction and owner experience with your new Jeep® Brand vehicle. This is the only extended protection provider backed by the manufacturer, FCA US LLC. We stand behind every Mopar Vehicle Protection plan with certified, factory-trained technicians and the use of authentic Mopar parts. Your plan is honored at over 2,600 dealerships within the United States, Canada, Puerto Rico and Mexico. Be sure to ask for a Mopar Vehicle Protection plan at your dealership, call (800) 442-2666 or visit moparvehicleprotection.com



OWNER CONNECT

MOPAR® OWNER CONNECT: STAY CONNECTED Your Jeep® vehicle ownership gives you the credentials to access extensive Brand vehicle information, service and maintenance records, recall notifications and special offers through whatever device you prefer – computers, smartphones or tablets! Register your Jeep Brand vehicle at owners.jeep.com or download the Jeep Vehicle Owners app for free at either Apple or Google Play stores.



AUTOMOBILITY The FCA US LLC Automobility Program provides aftermarket reimbursement incentives on adaptive vehicle upfit equipment to help provide safe and reliable vehicle modifications, enhancing accessibility for all people. For more information, call (800) 255-9877 or visit chryslerautomobility.com



JEEP® MASTERCARD® Earn 3 points per \$1 on qualifying purchases made at FCA US LLC dealerships, 2 points per \$1 on qualifying travel purchases and 1 point per \$1 on qualifying purchases everywhere else with the new Jeep® MasterCard®. Points may be redeemed at your local dealership for cash off your new or used vehicle, accessories, parts or service – including your next oil change. Or choose from hundreds of other rewards, including travel, cash back to your account, merchandise or gift cards.⁸ For more information or to apply, visit jeepcard.com



JEEP® WAVE It's the universal greeting all Jeep® Brand vehicle owners know and now it's the name of a new and exclusive owners' benefits program. With your enrolled Jeep Brand vehicle, you'll enjoy access to a dedicated 24/7 exclusive Jeep Brand owner support hotline, complimentary maintenance, first-day rental and trip-interruption coverage, VIP treatment at Jeep Brand events across the country and discounts on select brands through our shopping network. Enrollment available for purchase.



M O P A R®

AVAILABLE PACKAGES

MOPAR® CHROME ACCENTS GROUP

Includes Chrome Fuel Filler Door and Chrome Mirror Covers

MOPAR ELECTRONICS GROUP

Includes Electronic Vehicle Tracking System (EVTS)

MOPAR INTERIOR APPEARANCE GROUP

Includes Cargo Area Liner, Premium Floor Mats with Mopar® Logo, Chrome Shift Knob, Bright Pedal Kit and Bright Door Sill Guards (requires Dark Slate Gray interior and automatic transaxle)

MOPAR LEATHER SEAT GROUP

Includes Katzkin® leather-trimmed seats in Black

MOPAR TRAILER TOW GROUP

Includes Class II Hitch Receiver (not available on Freedom Drive II® Off-Road Group and All-Weather Capability Group)



SHOWN IN BILLET SILVER METALLIC WITH AUTHENTIC JEEP® BRAND VEHICLE ACCESSORIES BY MOPAR, INCLUDING SPORT UTILITY BARS, ROOF-MOUNT WATER SPORTS CARRIER, 18-INCH BLACK PAINTED CAST-ALUMINUM WHEELS, CHROME MIRROR COVERS, CHROME DOOR HANDLE COVERS AND MOLDED SPLASH GUARDS.

Properly secure all cargo.

AUTHENTIC JEEP® BRAND VEHICLE ACCESSORIES

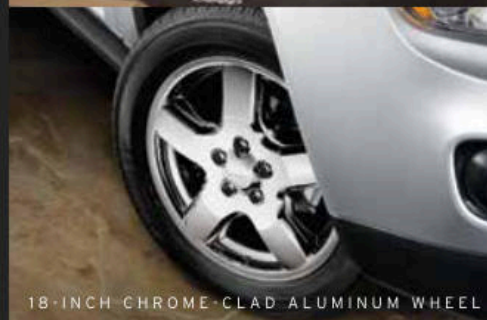
Choose Mopar® for quality parts and accessories made to custom-fit your Compass. Mile after mile, you'll keep going strong with our expert technicians, genuine parts, Mopar Vehicle Protection® plans, Express Lane Service and online Mopar Owner Connect website (register at owners.jeep.com). See your Jeep® Brand dealer for all the latest parts and accessories. You can learn more about the world of Mopar and all it has to offer at mopar.com



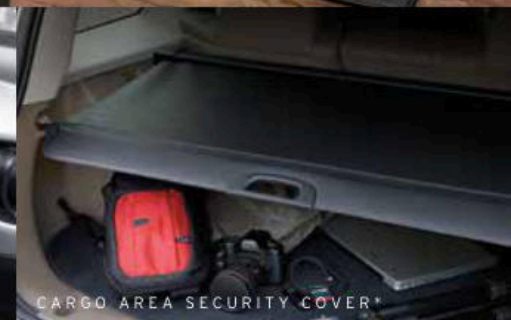
CARGO CARPET MAT*



ALL-WEATHER MATS



18-INCH CHROME-CLAD ALUMINUM WHEEL



CARGO AREA SECURITY COVER*



FRONT AIR DEFLECTOR



HITCH-MOUNT BIKE CARRIER*

*Properly secure all cargo.

JEEP LIFE

DELVE DEEPER INTO THE JEEP BRAND WITH AN EXPANSIVE ARRAY OF SOCIAL MEDIA, SHOPPING AND OWNER RESOURCES. PLUS, DISCOVER ONE-OF-A-KIND EVENTS THAT CAN CREATE LIFELONG CONNECTIONS. EXPAND YOUR ADVENTURES IN EVERY DIRECTION BY VISITING JEEP.COM



Jeep Gear

JEEP. SOCIAL ADVENTURES Expand your horizons to include authentic and active Jeep® Brand online communities. Post stories, share photos, watch videos and get the latest news from Jeep Brand gearheads and engineers on Facebook, Twitter, Google+, Instagram, Pinterest and YouTube. Tune in and get out into the virtual world where thrilling adventures are happening every single day.

facebook.com/Jeep
twitter.com/Jeep
plus.google.com/+Jeep
instagram.com/Jeepofficial
pinterest.com/Jeep
youtube.com/TheJeepChannel

GO MOBILE Take a multimedia tour of your vehicle on your mobile device. Log on to the jeep.com mobile site for a comprehensive, at-a-glance review of what you need to know about your Jeep Brand vehicle. Experience visual and interactive demonstrations of the entire lineup, gaining access to product information at your fingertips, wherever you go.

JEEP. BADGE OF HONOR Introducing a new online community that invites off-roading fans to sign in, sign up, download the smartphone app and check in to legendary off-road trails across the U.S.A. earmarked by the Jeep® Badge of Honor. Members can discover special trails and maps, earn Trail Points and ranks within the community, share photos and learn more about Jeep Trail Ratings. Connect with fellow Jeep vehicle owners and like-minded friends at jeep.com/badge-of-honor

JEEP. JAMBOREES For those who are driven by an adventurous spirit, we invite you to join us on the trail. You can head for parts unknown or return to fun, familiar places. Jeep® Jamboree U.S.A. offers off-road adventure weekends that bring together the outdoors, down-to-earth people and their Jeep Brand 4WD vehicles. We invite you to explore America's remote backcountry, where great friendships and memories are made at jeepjamboreeusa.com

JEEP. GEAR Uncover an extensive line of fun that's been developed exclusively for the Jeep® Brand enthusiast. From authentic wearables to unique gifts, all items are as rugged and durable as your Jeep vehicle. Express your true nature. Learn more at jeep.com/gear



Jeep



(1) SiriusXM subscriptions for audio and data services are sold by SiriusXM to follow your trial subscription. **If you decide to continue listening after your trial, the subscription plan you choose will automatically renew thereafter and you will be charged according to your chosen payment method at then-current rates.** Fees and taxes apply. To cancel, you must call SiriusXM at 1-866-635-2349. See the SiriusXM Customer Agreement for complete terms and more information at www.siriusxm.com. All fees and programming subject to change. Your equipment and features for SiriusXM services will vary depending upon the vehicle you select and may be limited in select markets. (2) Requires a mobile phone equipped with the Bluetooth Hands-Free Profile. Visit UconnectPhone.com for system and device compatibility. (3) Always sit properly with the head restraint properly adjusted. Never place anything in front of the head restraint. (4) The Advanced Front Air Bags in this vehicle are certified to the new U.S. Federal regulations for Advanced Air Bags. Children 12 years old and younger should always ride buckled up in a rear seat. Infants in rear-facing child restraints should never ride in the front seat of a vehicle with a passenger front air bag. All occupants should always wear their lap and shoulder belts properly. (5) No system, no matter how sophisticated, can repeal the laws of physics or overcome careless driving actions. Performance is limited by available traction, which snow, ice and other conditions can affect. When the ESC warning lamp flashes, the driver needs to use less throttle and adapt speed and driving behavior to prevailing road conditions. Always drive carefully, consistent with conditions. Always wear your seat belt. (6) Always look before proceeding. An electronic drive aid is not a substitute for conscientious driving. Always be aware of your surroundings. (7) Do not attempt water fording unless depth is known and consistent with the vehicle's water fording rating in the Owner's Manual. Traversing water can cause damage that may not be covered by the new vehicle warranty. Always off-road responsibly in approved areas. (8) Complete details, including restrictions, limitations and exclusions, will be available when you become a Cardmember. MasterCard is a registered trademark of MasterCard International Incorporated. This card is issued by First Bankcard, a division of First National Bank of Omaha, pursuant to a license by MasterCard International Incorporated.

©2016 FCA US LLC. All Rights Reserved. Jeep, Chrysler, Dodge, Ram, Mopar, the Jeep grille, Compass, Automobility Program, Freedom Drive II, High Altitude, Latitude, the Mopar Owner Connect design, Mopar Vehicle Protection, ParkView, Sentry Key, Trail Rated and Uconnect are registered trademarks of FCA US LLC.

Bluetooth is a registered trademark of Bluetooth SIG, Inc. Boston Acoustics is a registered trademark of Boston Acoustics, Inc. Facebook is a registered trademark of Facebook Inc. Garmin and the Garmin logo are registered trademarks of Garmin Ltd. or its subsidiaries and are registered in one or more countries, including the U.S. Goodyear is a registered trademark of The Goodyear Tire & Rubber Company. All rights reserved. Instagram is a registered trademark of Instagram, Inc. iPad, iPhone, iPod and iTunes are registered trademarks of Apple Inc. Katzkin is a registered trademark of Katzkin Leather Interiors, Inc. Pinterest is a registered trademark of Pinterest, Inc. Sirius, XM and all related marks and logos are trademarks of SiriusXM Radio Inc. The Twitter name, logo, Twitter T, Tweet and Twitter bird are trademarks of Twitter, Inc. in the United States and other countries. YouTube, Google Play and Google+ are registered trademarks of Google Inc.

This brochure is a publication of FCA US LLC. All product illustrations and specifications are based upon current information at the time of publication approval. FCA US LLC reserves the right to make changes from time to time, without notice or obligation, in prices, specifications, colors, materials and to change or discontinue models, which are considered necessary to the purpose of product improvement or for reasons of design and/or marketing.