

LAND ROVER LR4

2016



ABOVE & BEYOND





BY APPOINTMENT TO
HM THE QUEEN
MANUFACTURERS OF
MOTOR VEHICLES
JAGUAR LAND ROVER LIMITED
COVENTRY



BY APPOINTMENT TO
HRH THE DUKE OF EDINBURGH
MANUFACTURERS OF
MOTOR VEHICLES
JAGUAR LAND ROVER LIMITED
COVENTRY



BY APPOINTMENT TO
HRH THE PRINCE OF WALES
MANUFACTURERS OF
MOTOR VEHICLES
JAGUAR LAND ROVER LIMITED
COVENTRY



ABOVE & BEYOND

Ever since the first Land Rover vehicle was conceived in 1947, we have built vehicles that challenge what is possible. These in turn have challenged their owners to explore new territories and conquer difficult terrains. Our vehicles epitomize the values of the designers and engineers who have created them. Each one instilled with iconic British design cues, delivering capability with composure. Which is how we continue to break new ground, defy conventions and encourage each other to go further. Land Rover truly enables you to make more of your world, to go above and beyond.









CONTENTS

LAND ROVER LR4

New for 2016

DESIGN

Land Rover LR4 Landmark

Exterior

Interior

Seven-Seats

Seating Capacity

DRIVING TECHNOLOGY

Terrain Response®

Hill Descent Control (HDC®)

On-Road Driving

Towing and Driving Aids

FINISHING TOUCHES

Meridian™ Sound System

Driver Aids

Comfort For All

ENGINE

4 Eight-Speed Automatic Transmission 33
3.0L V6 Supercharged 33

BODY AND CHASSIS

6 Strength and Stability 34

DRIVER ASSISTANCE

11 36

SPECIFICATIONS

The Land Rover LR4 Engine 40
Choose Your Model 42
Choose Your Color 46
Choose Your Wheels 48
Choose Your Interior 50
Choose Your Accessories 56

TECHNICAL DETAILS

24 62

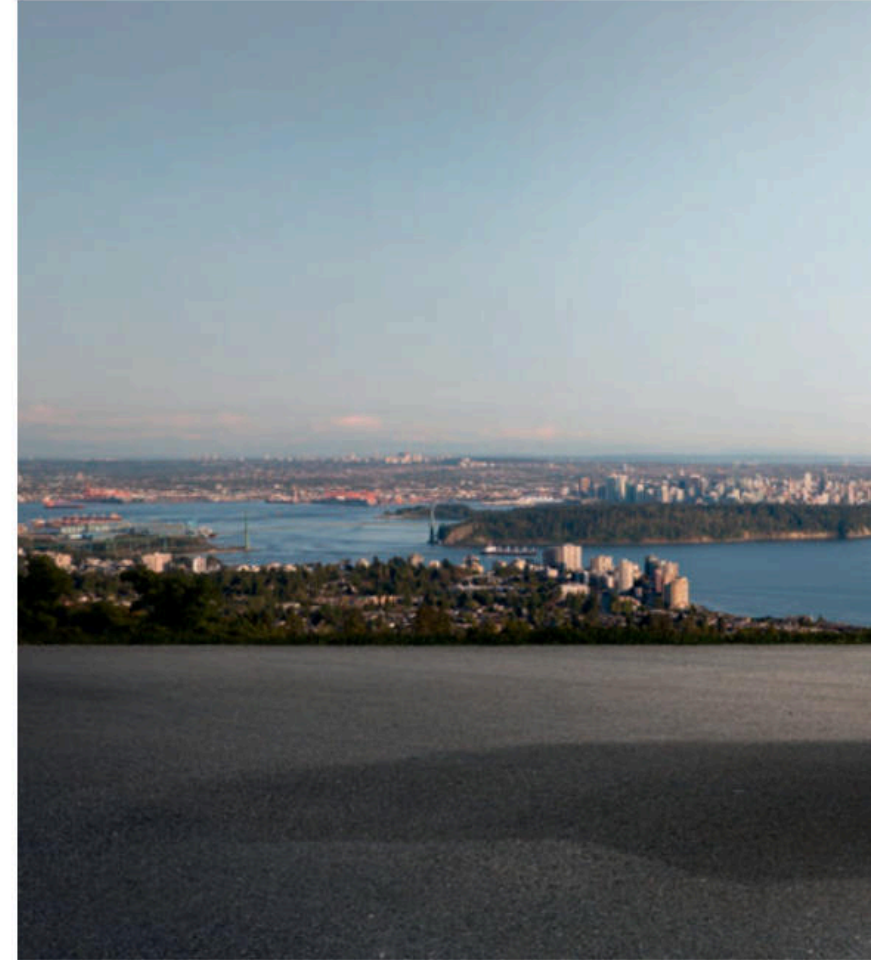
LAND ROVER EXPERIENCE

28 64

Vehicle shown is a Land Rover LR4 HSE in Loire Blue.

LAND ROVER LR4

Land Rover LR4 goes further. Its capability is born from the first Land Rover and is renowned across the city, across country and across the globe. Its contemporary design is purposeful, its drive connected and assured. Add excellent versatility with optional seven full-size adult seats and the picture is complete.





LAND ROVER LR4 LANDMARK

With its distinctive shape and superb levels of interior finish and comfort, Land Rover LR4 Landmark is our most luxurious member of the family yet. Exterior design touches such as its Titan hood script and tailgate badges add greatly to the look while inside, attention to every single detail and such materials as luxurious Windsor leather seats help create an exclusive space that is both versatile and effortlessly relaxed.

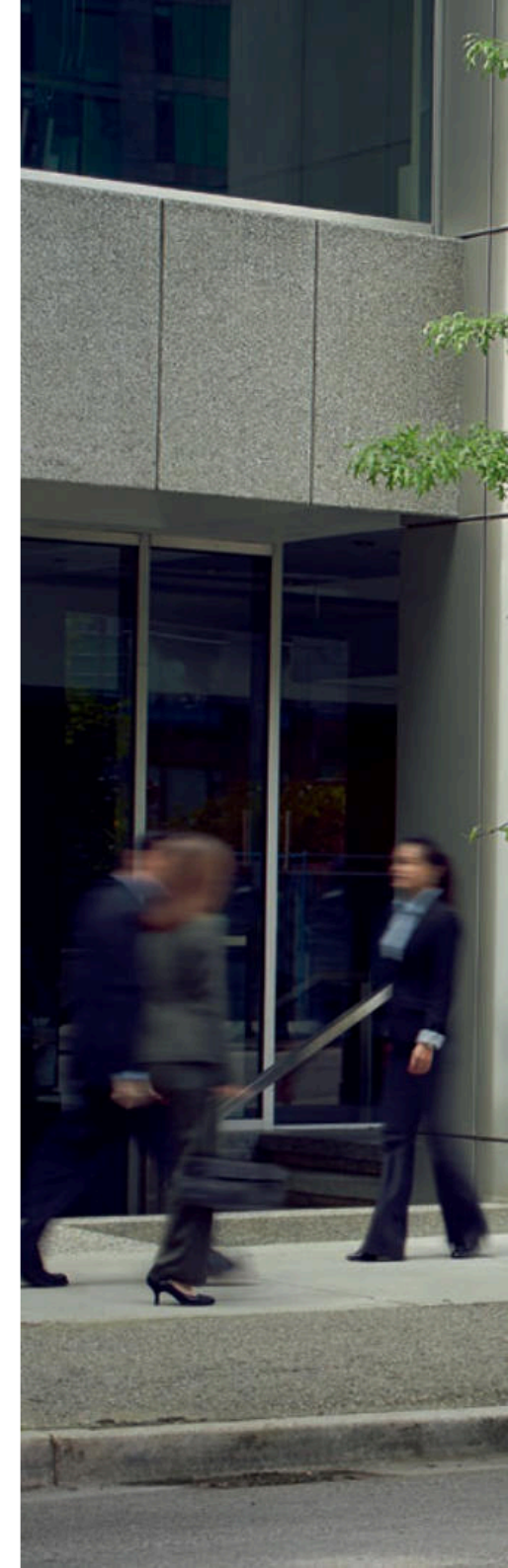
Vehicle shown above is a Land Rover LR4 Landmark in Santorini Black.



DESIGN

LAND ROVER LR4 LANDMARK

Land Rover LR4 Landmark is ready for anything. With its Titan hood and tailgate badges, full-length bright finish roof rails and Narvik Black mirror caps, Land Rover LR4 Landmark looks truly distinctive. 20 inch five split-spoke alloy wheels further enhance its appearance, together with Alpine sunroof – fitted as standard – and Narvik Black grill vanes and fender vents. The vehicle comes in a select choice of colors including Zanzibar. Inside, the same exemplary design cues are apparent. The luxurious standard Windsor leather seats are enhanced by stunning Grand Black Lacquer or Straight Grain Walnut trim inserts. Unique Landmark badging heightens the vehicle's exceptional appeal.





1066

LAND ROVER

EXTERIOR

The design of Land Rover LR4 is accentuated by the use of jewel-like front lights giving the vehicle a contemporary look. While at the rear, the split tailgate has been designed for maximum reach and flexibility to make loading awkward objects easier.





LAND ROVER





INTERIOR

What Land Rover LR4 gains in practicality and space, it doesn't compromise in comfort and attention to detail. Its tactile interior is a contemporary and beautifully crafted environment. The seats are available in a variety of materials such as Windsor leather, which include electric adjustments and memory, giving the driver even greater support. Double-stitching on the fascia top is just one indication of the high-quality finish throughout the vehicle.

*Not available on all models.
Interior shown left and above is a Land Rover LR4 Landmark in Tan Windsor leather.





SEVEN-SEATS*

Stadium seating gives everybody unspoiled views, with head, leg and shoulder room that are among the best in class and full-size seats for up to seven adults. These are just some of the benefits of the bold design and upright side profile of Land Rover LR4. And with a range of infotainment and technologies to choose from, everyone will be entertained, relaxed and comfortable.

*Optional on Land Rover LR4 base model.
Interior shown left is a Land Rover LR4 Landmark in Almond Windsor leather. Cubby Box Lid is only available in Arabica when Almond Windsor leather is selected on a Land Rover LR4 Landmark model. Please see Color and Trim Matrix on page 52 for interior combination availability.

SEATING CAPACITY

With the capability to transport the seven passenger seats and their luggage with ease, Land Rover LR4 is every vehicle you'll ever need.

The flexible, versatile layout provides a configuration to suit almost every conceivable use – especially as the second and third rows* can be folded independently of each other.



7 SEATS



5 SEATS

*Where fitted.
Please see Color and Trim Matrix on page 52
for interior combination availability.



4 SEATS



3 SEATS



2 SEATS

DRIVING TECHNOLOGY

TERRAIN RESPONSE®*

Land Rover has always had capability at its heart and the Terrain Response system® proves it. This proprietary technology acts as an off-road expert enabling the driver to tackle almost every surface with confidence.

At the touch of a switch, Terrain Response system® reconfigures the Land Rover LR4 engine, transmission, throttle and traction settings for optimum drive-ability. So whether traveling over pavement, grass, gravel or snow, mud and ruts, sand or rocks, the vehicle handles it with consummate ease.



*These features are not a substitute for driving safely with due care and attention and will not function under all circumstances, speeds, weather and road conditions, etc. Driver should not assume that these systems will correct errors of judgment in driving. Please consult the owner's manual or your local authorized Land Rover Retailer for more details.
**Rock Crawl not available with single speed transfer gearbox.
Vehicle shown right is a Land Rover LR4 HSE in Aruba.







HILL DESCENT CONTROL (HDC®)*

With exceptional ground clearance and short front and rear overhangs, Land Rover LR4 is cleverly proportioned. Together with notable torque and delivery of power, these attributes help ensure that the vehicle is eminently capable and more maneuverable on the most demanding terrain.

As a vehicle crests a steep hill, there is a moment when the feeling of sudden acceleration can occur, which is why Gradient Acceleration Control* has been incorporated into the standard Hill Descent Control (HDC®) technology. This feature helps reduce the feeling of increased speed and smoothes out the overall effect to make descent feel more assured.

*These features are not a substitute for driving safely with due care and attention and will not function under all circumstances, speeds, weather and road conditions, etc. Driver should not assume that these systems will correct errors of judgment in driving. Please consult the owner's manual or your local authorized Land Rover Retailer for more details.

Vehicle shown left is a Land Rover LR4 HSE in Aruba.





ON-ROAD DRIVING

Heading away from the city towards the great outdoors should be a pleasure. That's why Land Rover LR4 features advanced technology to help the driver feel more connected to the road and deliver an engaged and responsive drive. Now, getting there can be as enjoyable as being there.

Vehicle shown is a Land Rover LR4 Landmark in Santorini Black.



TOWING AND DRIVING AIDS

SURROUND CAMERA SYSTEM**

With five digital cameras mounted around the vehicle, the Surround Camera System provides a near 360° view. It aids parking and is perfect for more complex driving assignments such as towing a boat. By customizing the number of images the camera relays to the Touch-screen, other functions can be utilized. **Junction View, Rear View, Tow Assist and Tow Hitch Assist** are included in this advanced system.

TOW HITCH ASSIST^{1A}

As part of the Surround Camera System, Tow Hitch Assist makes coupling a trailer to the vehicle that much easier by helping you visualize the hitching process; it displays the predicted path of the vehicle towards the trailer tow bar on the Touch-screen.

TRAILER STABILITY ASSIST^{1A}

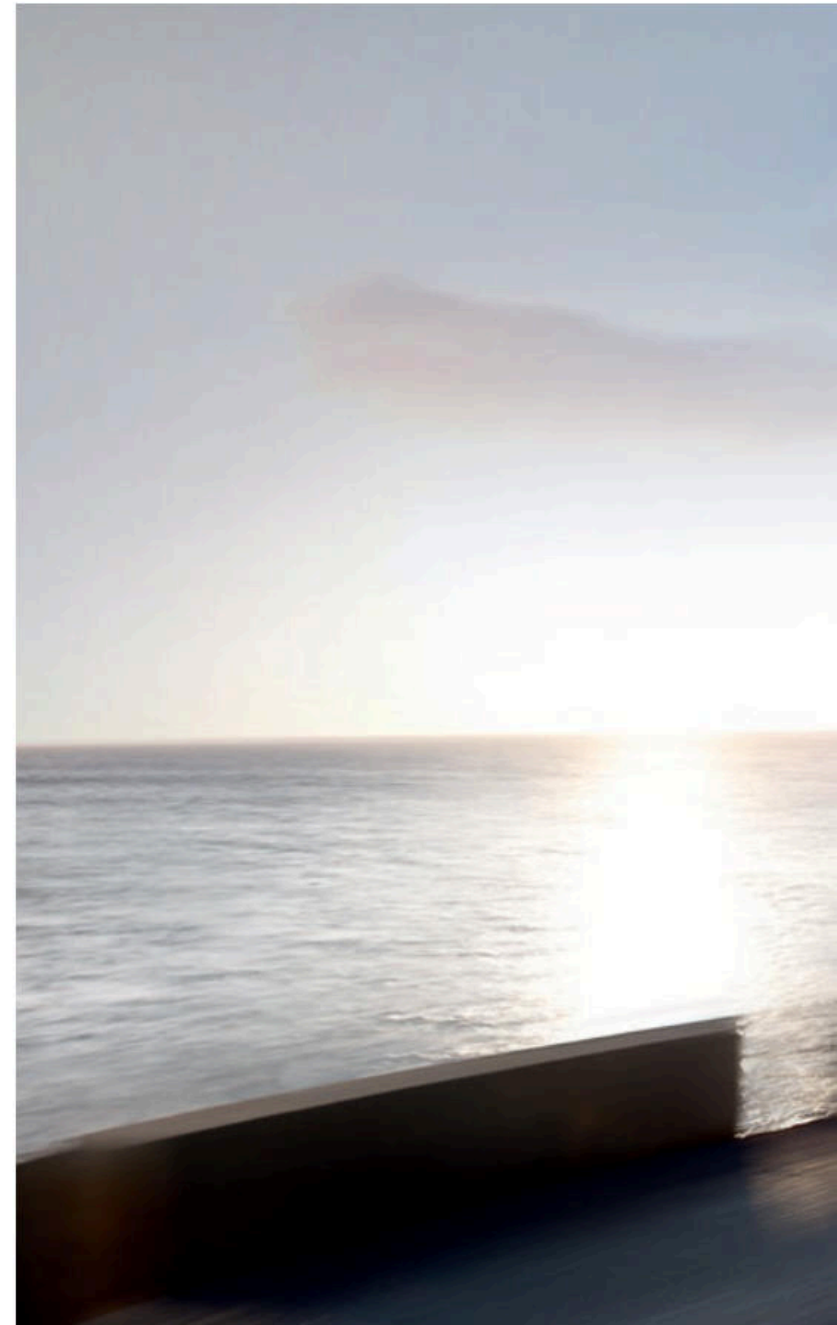
Trailer Stability Assist (TSA) monitors the vehicle to detect movements in the trailer and then uses selective braking to help correct potentially hazardous situations.

*Optional on some models.

¹These features are not a substitute for driving safely with due care and attention, and will not function under all circumstances, speeds, weather and road conditions. The driver should not assume that these features will correct errors of judgment in driving. Please consult your vehicle's owner's manual or your local authorized Land Rover Retailer for more details.

²Only active when a tow bar and electrics are fitted.

Vehicle shown is a Land Rover LR4 Landmark in Santorini Black.







FINISHING TOUCHES

MERIDIAN™ SOUND SYSTEM

Land Rover has partnered with Meridian, a world leader in audio technologies and digital sound processing, to develop advanced audio systems for Land Rover LR4.

The optional Meridian™ Audio System delivers superb acoustics and is noted for its excellent reproduction quality from all sources – radio, CD, iPod® or USB. The Meridian Surround Sound System features 17 speakers including a subwoofer for full surround sound.

The result is the very best in world-class audio reproduction with sound that you feel and hear, just as the artist intended.

Meridian is a registered trademark of Meridian Audio Ltd. CD and MP3 disc and file compatibility for your iPod® or other MP3 devices is standard. iPod® is a registered trademark of Apple Inc., registered in the US and other countries.



MERIDIAN SURROUND SOUND SYSTEM

 825 WATTS

 SPEAKERS

 SUBWOOFER





DRIVER AIDS

COMMAND DRIVING POSITION*

For over 65 years, Land Rover has become renowned for many innovations, one of which is the legendary Command Driving Position. From here, the driver gets an unparalleled view of the road ahead and greater all round visibility. Hazards can be spotted earlier, parking is made easier and as all the key controls come readily to hand.

*These features are not a substitute for driving safely with due care and attention and will not function under all circumstances, speeds, weather and road conditions, etc. Driver should not assume that these systems will correct errors of judgment in driving. Please consult the owner's manual or your local authorized Land Rover Retailer for more details.

Vehicle shown left is a Land Rover LR4 HSE in Aruba.

COMFORT FOR ALL

COMPACT SMART KEY – KEYLESS ENTRY*/PUSH BUTTON START

Once the vehicle has been accessed using the remote transmitter, the device may be stored in a pocket or bag to allow starting without its use. The Keyless Entry system provides even greater convenience. When within close proximity of the vehicle along with the remote Compact Smart Key, simply open the door, get in and push the Start button.

AUTOMATIC CLIMATE CONTROL

For the ultimate comfort whatever the temperature, heated front seats are available. The driver and passenger preferences can be independently controlled via the Touch-screen for additional comfort.

SUNROOF WITH ALPINE ROOF

Even the rearmost passengers enjoy a glass roof in Land Rover LR4 with the sunroof with Alpine roof. The sunroof tilts and slides electronically and the combined reflective properties of the glass panel and interior sunblinds keep everyone cool and the cabin light and airy.

REAR CLIMATE CONTROL**

For added comfort, vehicles are fitted with heated second row seats. A rear Climate Control system is also offered.



*Not available on Land Rover LR4 base model.

**Optional on LR4 model as part of the Seven-seat Comfort Package.
Interior shown right is a Land Rover LR4 Landmark in Tan Windsor leather.





REAR SEAT ENTERTAINMENT**

The optional Rear Seat Entertainment features two eight-inch screens built into the front headrests, a pair of WhiteFire® digital headphones and a dedicated remote control, you can feel truly at home with your choice of film, TV, music or games console.

HARD DISK DRIVE NAVIGATION**

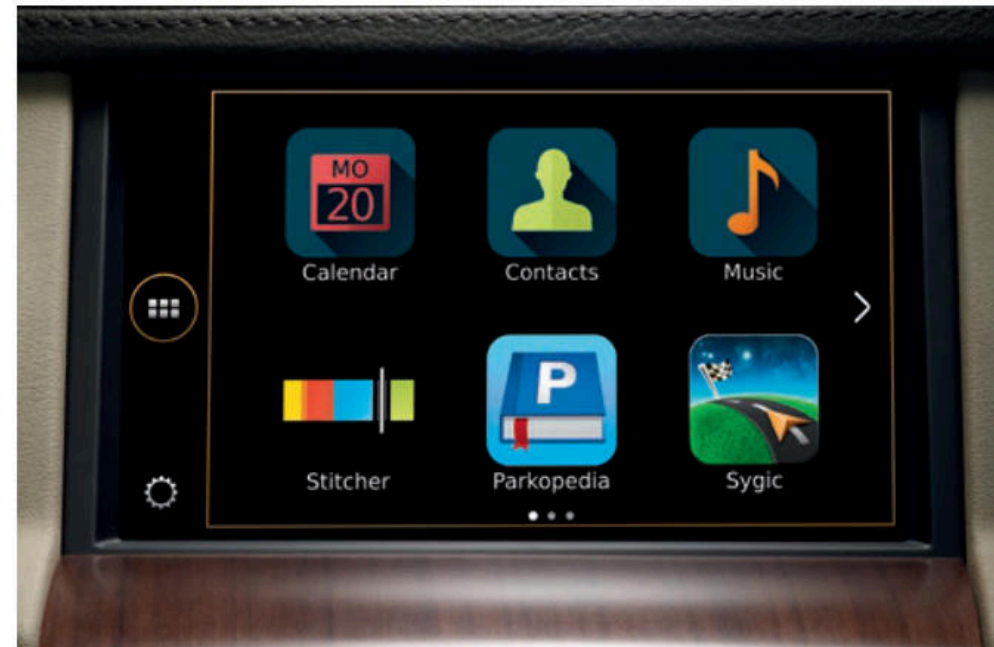
With prompt access speed, graphics and display, the Hard Disk Drive Navigation System (HDD) stores up to 40GB of data. Navigation mapping can be upgraded via a Land Rover Retailer download. Additional features available on HDD-equipped vehicles are DVD Audio and MP3 DVD playback and Virtual CD Auto Changer and provides track information for easy identification of CDs and tracks.

LAND ROVER INCONTROL® APPS™*

This feature enables you to use vehicle optimized smartphone apps on the vehicle's Touch-screen††. Using the InControl Apps™ USB port you can enjoy a variety of vehicle optimized apps such as: Contacts, Calendar and Music Player, with more third party vehicle apps being released over time. Your smartphone will also be re-charged while using the feature.

THE PORTABLE AUDIO INTERFACE

Allows the connection to the in-car entertainment system of an iPod® with full track and search integration. An MP3 player or a mass storage device can also be connected via the USB port.



*Not available on Land Rover LR4 base model.

†Driving while distracted can result in loss of vehicle control. Do not operate, adjust or view the navigation or multimedia systems under conditions that will affect your safety or the safety of others. Only use mobile phones, and other devices, even with voice commands, when it is safe to do so.

††Do not use Land Rover InControl® features under conditions that will affect your safety or the safety of others. Driving while distracted can result in loss of vehicle control.

WhiteFire® is a registered trademark of Unwired Technology LLC and any use of such marks by Land Rover is under license.

iPod® is a registered trademark of Apple Inc., registered in US and other countries.

Interior shown left is a Land Rover LR4 HSE in Almond Windsor leather.





ENGINE

EIGHT-SPEED AUTOMATIC

Escape the daily grind. With the V6 Supercharged engine, Land Rover LR4 delivers in the most demanding criteria.

The Land Rover LR4 continues to drive power and all-terrain capability when matched with fuel-stretching Stop/Start technology and the refined 8-speed automatic transmission.

3.0L V6 SUPERCHARGED

The 3.0 Liter V6 Supercharged is the engine of choice for the Land Rover LR4, generating 340hp@6,500rpm with 332 lb-ft of torque.



Engine shown above is 3.0 Liter V6 Supercharged.
Vehicle shown left is a Land Rover LR4 Landmark in Santorini Black.

BODY AND CHASSIS

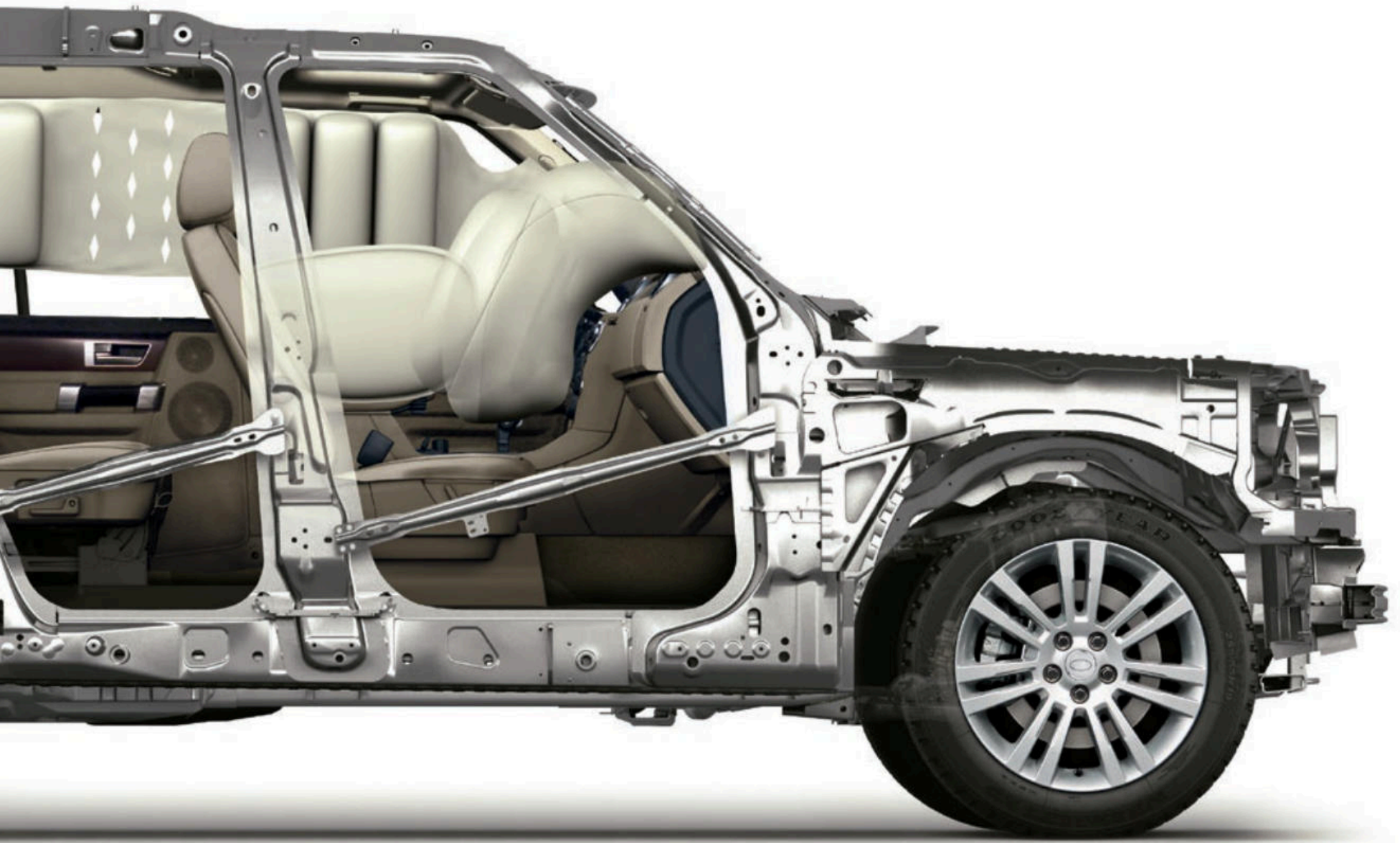
STRENGTH AND STABILITY

BODY, CHASSIS AND VEHICLE DYNAMICS

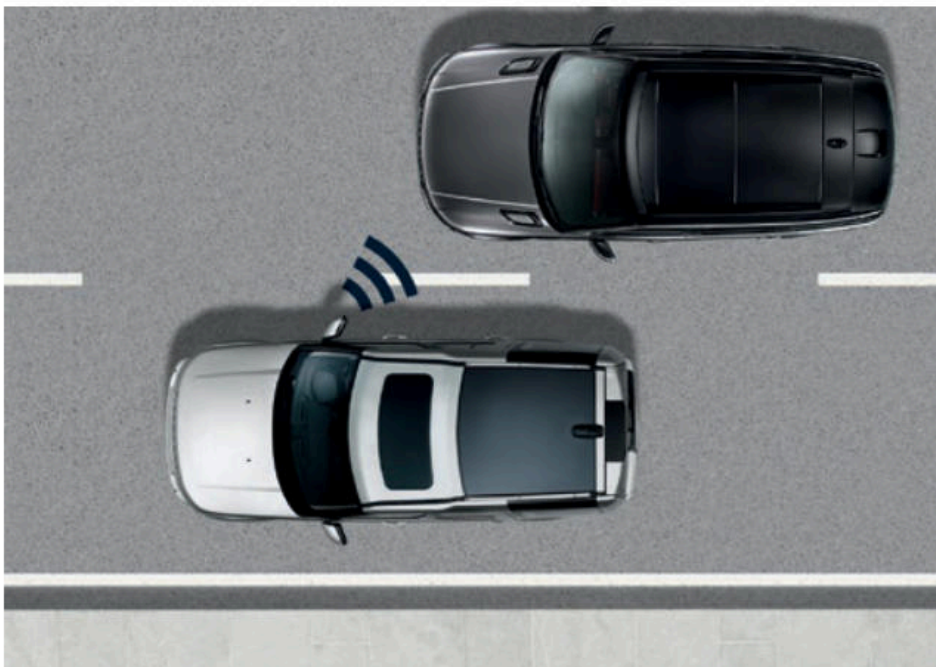
By utilizing the very latest in Computer Aided Design and state-of-the-art technologies, we worked on building the chassis to be strong, light and stiff. 'Hydroforming' has enabled our engineers to extrude steel which allows large components to be produced to the highest possible tolerances. Aluminum, magnesium and high strength Boron steel are also used to help shape the vehicle and reinforce specific features such as the front windshield and rear passenger door pillars.

With exceptional ground clearance and short front and rear overhangs, Land Rover LR4 is cleverly proportioned. Together with impressive torque and delivery of power, these attributes help ensure a superb drive.





DRIVER ASSISTANCE



BLIND SPOT MONITORING WITH CLOSING VEHICLE SENSING*†

These optional systems are designed to see what you might miss. Using sensors hidden in the side of the rear bumpers, blind spot monitoring alerts you via an icon displayed in the appropriate door mirror when a vehicle enters a blind spot on either side of your vehicle. If a vehicle approaches at speed from behind when changing lanes, the closing vehicle sensing function will alert you by flashing the icon in the door mirror.



REVERSE TRAFFIC DETECTION**

Using radar detectors in the rear of the vehicle, the system is designed to warn you about potential collisions during reversing maneuvers. The system can help detect a vehicle approaching from either side. When a target vehicle with a credible 'time to collision' is detected (a collision within three seconds or less), the system alerts the driver. Three warnings are given: an indicator lights up in the corresponding door mirror, an audible alert is sounded and a warning symbol is displayed on the camera screen.

*Optional on some models.

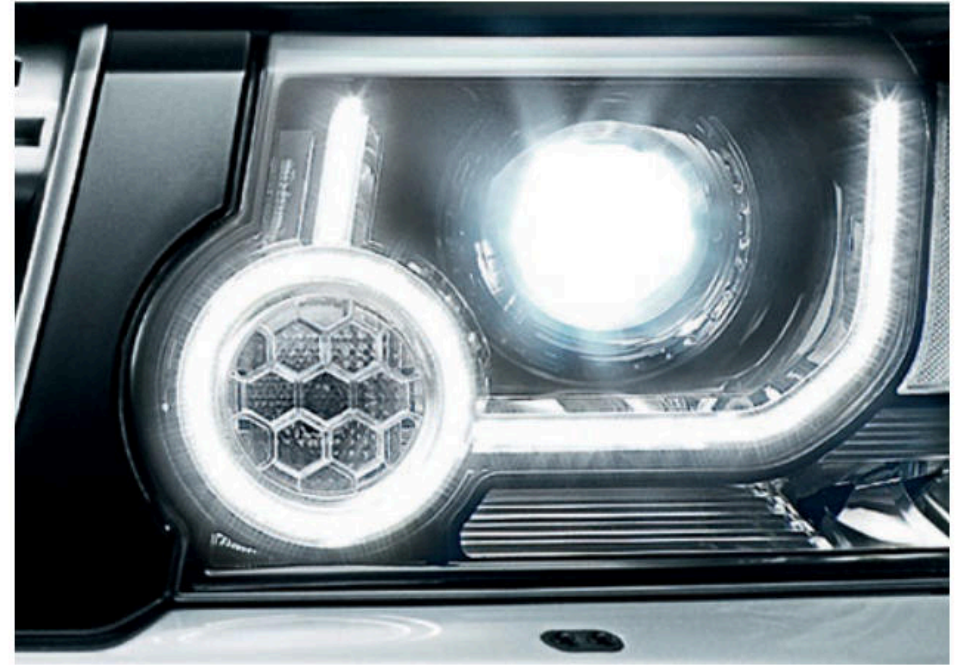
†These systems are not a substitute for driving safely with due care and attention and will not function under all circumstances, speeds, weather and road conditions, etc. Driver should not assume that these systems will correct errors of judgment in driving. Please consult the owner's manual or your local authorized Land Rover Retailer for more details.

**Not available on Land Rover LR4 base model.



ADAPTIVE CRUISE CONTROL^{†A}

The Adaptive Cruise Control (ACC) uses radar to scan the road ten times a second. ACC will dynamically match the speed of the vehicle in front of you, settling down behind it and maintaining a constant speed with one of four cruise gap distances set by your preference. Forward Alert will give an audio and visual alarm when you are closing in on a vehicle.



AUTOMATIC HEADLAMPS WITH HIGH BEAM ASSIST^{**†}

Automatic headlamps with high beam assist feature detects vehicle headlamps/tail lights and dips the high beam until the light source is out of range. The system is able to distinguish between automotive and non-automotive light sources.

ADAPTIVE XENON HEADLAMPS WITH LED SIGNATURE^{**†}

Adaptive Xenon headlamps with signature LED lights combine practicality with distinctive design. For more relaxed night-time driving, adaptive lighting varies the light cast ahead of the vehicle so that the beams follow the curve of the road.

Land Rover LR4 offers an exclusive range of options that allow you to personalize your vehicle.

The following pages take you through a logical series of steps to create your ideal Land Rover LR4. You have several choices: from selecting your engine and model to exterior and interior colors before choosing your wheels and finishes.

To view the full list of standard and optional features available on each Land Rover LR4 derivative please see the accompanying Specification and Price Guide or go to our online configurator at LandRoverUSA.com

40-41

1

**STEP 1
THE LAND ROVER
LR4 ENGINE**

42-45

2

**STEP 2
CHOOSE YOUR MODEL**

Select your ideal Land Rover LR4.

46-47

3

**STEP 3
CHOOSE YOUR COLOR**

There's a wide range to enable you to express yourself.

48-49

4

**STEP 4
CHOOSE YOUR WHEELS**

There's a range of styles, each one designed to complement the bold exterior.

50-55

5

**STEP 5
CHOOSE YOUR INTERIOR**

Carefully selected colors complemented by a range of finishes. You can personalize your own interior space.

56-61

6

**STEP 6
CHOOSE YOUR ACCESSORIES**

A range of stylish and practical accessories. You can tailor your vehicle to your specific needs.

62-63

TECHNICAL DETAILS

Technical information and data for dimensions, performance and specifications.

1



DRIVELINE AND ENGINE PERFORMANCE

Our engine includes Intelligent Stop/Start technology allowing for reduced CO₂ emissions and greater fuel economy. The 3.0L V6 Supercharged engine is coupled with eight-speed automatic transmission that delivers an impressive 340hp power output with torque of 332 lb-ft.

	GAS
	3.0L V6 SUPERCHARGED
	AUTOMATIC
POWER (HP)	340
Driveline	Four Wheel Drive (4WD)
Power (hp)	340
Torque (lb-ft)	332
Maximum torque (rpm)	3,500
Capacity (cc)	2,995
No. of cylinders	6
Cylinder layout	Longitudinal V6

MODELS BY ENGINE

	LR4	LR4 HSE	LR4 LANDMARK
3.0L V6 Supercharged	■	■	■

Vehicle shown left is a Land Rover LR4 HSE in Aruba.

2

EACH MODEL HAS A CHOICE OF DISTINCTIVE FEATURES.

This guide will help you to select your ideal Land Rover LR4. On the following pages you'll see the standard features for each model.

LAND ROVER LR4



- Grill bars in Brunel with Gloss Black surround – Side fender vents in Brunel
- Oberon door handles
- Body colored wheel arches and rear bumper – Dark Techno Grey tow eye cover
- Halogen headlamps with daytime running lights (DRL) – Front fog lamps
- 19 inch ten-spoke 'Style 103' alloy wheels
- Side steps
- Rear park distance control with rear view camera*
- Grained Leather seats
- Sunroof with Alpine Roof and Blind (tilt/slide front glass)
- Meridian™ Audio System (380W) with 11 speakers including subwoofer.**

*These features are not a substitute for driving safely with due care and attention, and will not function under all circumstances, speeds, weather and road conditions. The driver should not assume that these features will correct errors of judgement in driving. Please consult your vehicle owner's manual or your local authorized Land Rover Retailer for more details.
**Meridian is a registered trademark of Meridian Audio Ltd. CD and MP3 disc and file compatibility for your iPod® or other MP3 devices is standard.

LAND ROVER LR4 HSE



Contents of LR4, plus;

- Passive entry
- Front parking aid*
- Rear climate control
- Hard Disk Drive (HDD) Navigation System¹ (includes 4x4 information and Traffic Messaging Channel)

Replaces LR4 content:

- Seven-seats.

LAND ROVER LR4 LANDMARK



Contents of LR4 HSE, plus;

- Unique Landmark badging
- Full length roof rails - in Bright Silver finish
- Extended Leather Package
- Interior mood lighting
- Front center armrest with cooled cubby box
- Cold Climate Package

Replaces LR4 HSE content:

- Grill in Narvik Black with Gloss Black grill surround
- Fender vents in Narvik Black
- Land Rover LR4 hood script and tailgate script in Titan
- Narvik Black mirror caps
- Windsor leather seats
- Electric seats with memory
- Adaptive cruise control*
- 20 inch five split-spoke wheels 'Style 510' Diamond Turned with Gloss Black finish.

¹Driving while distracted can result in loss of vehicle control. Do not operate, adjust or view the navigation or multimedia systems under conditions that will affect your safety or the safety of others. Only use mobile phones, and other devices, even with voice commands, when it is safe to do so.



BLACK DESIGN PACKAGE

Personalizing the exterior

The optional Black Design Package* has its own special character. The exterior sports full length Satin Black roof rails and Narvik Black mirror caps and door handles. The Narvik Black grill with bright insert, Black fog lamp bezels, Black 'LAND ROVER' hood and tailgate badging add to the design to give the vehicle a more contemporary feel. A molded Anthracite tow eye cover and 20 inch five split-spoke Black alloy wheels complete the look.



Grill in Narvik Black



Fender vents in Narvik Black

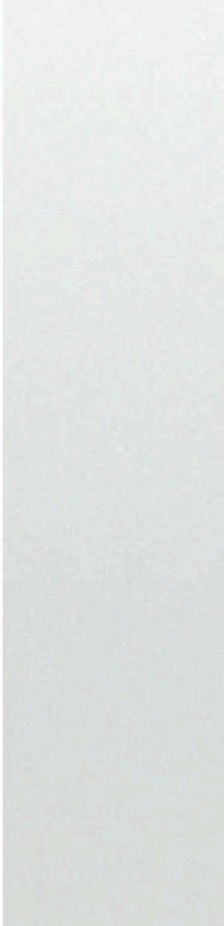


20 inch five split-spoke Black alloy wheel 'Style 510'

*Black Design Package not available on LR4 Landmark model.
Vehicle shown left is a Land Rover LR4 HSE with Black Design Package in Montalcino Red.

3

Fuji White
(Solid)



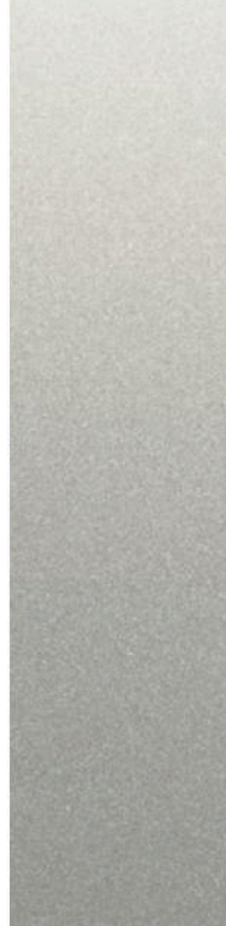
Yulong White
(Metallic)



Indus Silver
(Metallic)



Aruba
(Premium Metallic)



Corris Grey
(Metallic)



Montalcino Red
(Metallic)



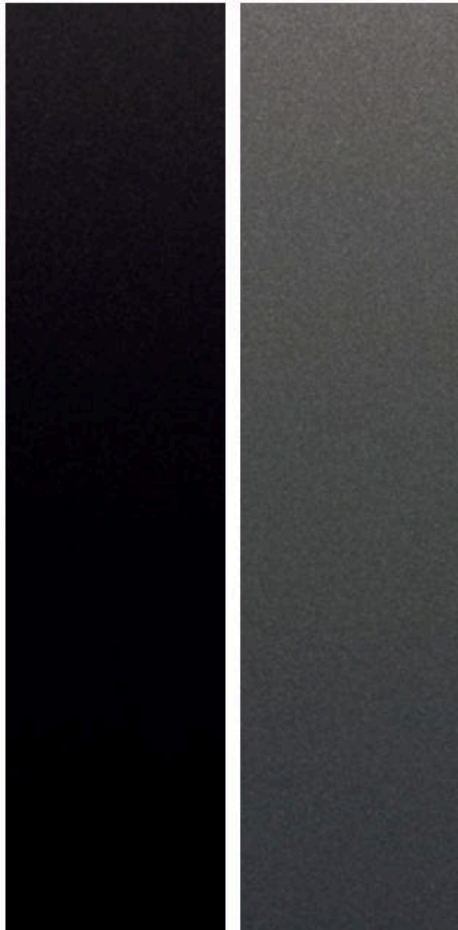
Loire Blue
(Metallic)



LR4 LANDMARK MODEL

Santorini Black
(Metallic)

Waitomo Grey
(Premium Metallic)



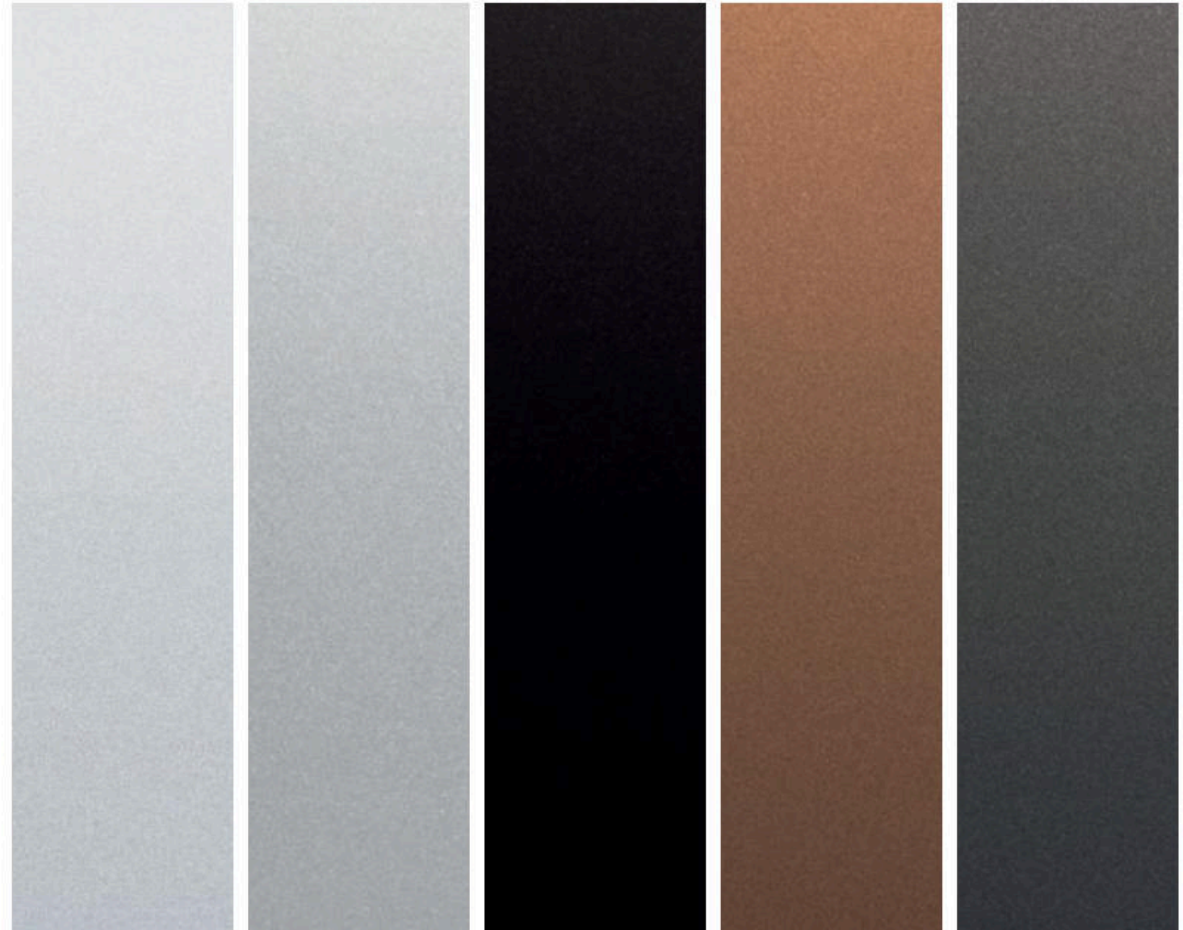
Yulong White
(Metallic)

Indus Silver
(Metallic)

Santorini Black
(Metallic)

Zanzibar*
(Metallic)

Waitomo Grey
(Premium Metallic)



*Available on Land Rover LR4 Landmark only.

4



19 INCH TEN-SPOKE
'STYLE 103'



20 INCH FIVE SPLIT-SPOKE 'STYLE 510'
DIAMOND TURNED WITH GLOSS BLACK FINISH



20 INCH FIVE SPLIT-SPOKE
'STYLE 511'

	OPTION CODE	LR4	LR4 HSE	LR4 LANDMARK
WHEELS				
19 inch ten-spoke 'Style 103'		■	–	–
20 inch five split-spoke 'Style 510' with High Gloss Black finish (not shown)*	029SP	□	□	–
20 inch five split-spoke 'Style 510' Diamond Turned with Gloss Black finish	029QM	□	–	■
20 inch five split-spoke 'Style 511'	029TJ	□	■	–

■ Standard □ Optional – Not Available.

*Available only with 20 inch Black Design Package (not shown).

Please note: When choosing vehicles fitted with specific wheel and tire combinations or optional wheels and tires, your intended use of the vehicle should be considered. Wheels with larger diameters and lower profile tires may offer certain styling or driving benefits, but may be more vulnerable to damage. Please discuss your requirements with your Land Rover Retailer. For further details on tire efficiency as required by EU legislation please speak to your Land Rover Retailer.

5

CHOOSE YOUR SEAT CONFIGURATION



60:40 five-seats*

The standard 60:40 five-seat features two rows with three comfortable seating positions and full size headrests.

*Only available on Land Rover LR4 base model.

Within all seating configurations all row two outboard seats feature ISOFIX child seat anchorage points.
Cubby Box Lid is only available in Arabica when Almond Windsor leather is selected on a Land Rover LR4 Landmark model.
Please see Color and Trim Matrix on page 52 for interior combination availability.






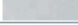







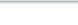
Seven-seats**

With seven full size adult seats, this configuration includes the 35:30:35 seat formation allowing for improved access into the third row seats and numerous folding combinations, including the ability to fold and store the second row completely flat.

**Optional on Land Rover LR4 base model as part of Seven-seat Comfort Package only.

COLOR AND TRIM MATRIX

You can now use this section to place your chosen colorway within the vehicle to personalize your cabin.
A choice of fascia inserts are also available.

	A		B		C
COLORWAYS	EBONY (page 54)		ALMOND/ARABICA (page 55)		TAN (page 55)
INTERIOR COLOR					
Seat color	Ebony		Almond		Tan
Carpet	Ebony		Nutmeg		Ebony
Cubby box lid	Ebony		Almond (All Other) / Arabica (LR4 Landmark)		Ebony
MODEL					
LR4 (Grained leather)	○		-		-
LR4 HSE (Grained leather)	○		○		-
LR4 LANDMARK (Windsor leather)	○		○		○
FASCIA INSERT					
 Straight Grain Walnut*	○		○		○
 Grand Black Lacquer**	○		○		-
EXTERIOR COLOR					
	ALL MODELS ¹	LR4 LANDMARK	ALL MODELS ¹	LR4 LANDMARK	LR4 LANDMARK
 Fuji White	▲	-	○	-	-
 Yulong White	▲	▲	○	○	▲
 Indus Silver	▲	▲	▲	▲	▲
 Aruba	○	-	▲	-	-
 Corris Grey	▲	-	○	-	-
 Montalcino Red	▲	-	○	-	-
 Loire Blue	▲	-	○	-	-
 Santorini Black	▲	▲	▲	○	▲
 Waitomo Grey	▲	▲	○	▲	▲
 Zanzibar	-	▲	-	▲	▲

▲ Combination is Designer's Choice ○ Combination is Available - Not Available.

*If selected for LR4 Landmark may only be paired with Tan or Almond/Arabica Windsor leather.

**If selected for LR4 Landmark may only be paired with Ebony Windsor leather.

¹Excluding LR4 Landmark.

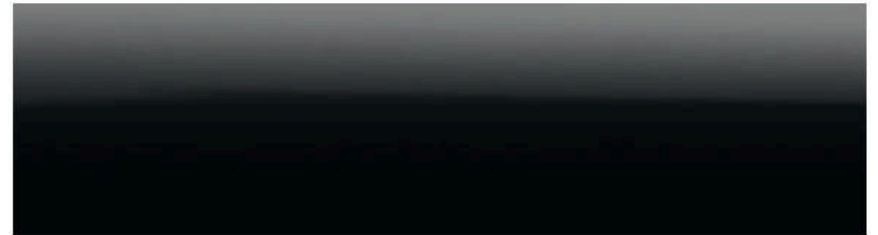
The above table is designed as a guide. Please contact your nearest Land Rover Retailer for more information.

TRIM FINISHES

Now you have chosen your interior color combination, choose one of two trim finishes.



Straight Grain Walnut



Grand Black Lacquer

Please see Color and Trim Matrix on page 52 for combination availability.

AVAILABLE INTERIOR COLOR COMBINATIONS

The cabin in Land Rover LR4 embodies the finest contemporary living. Horizontal and vertical lines and superb levels of comfort create a space in which you and your friends will want to spend time. A wide range of colorways and seat materials are available to suit all tastes.

A **Ebony / Ebony** – (available on LR4, LR4 HSE and LR4 LANDMARK)



Interior shown: Ebony Windsor leather*.

*Windsor leather only available on LR4 Landmark models.

†Cubby Box Lid is only available in Arabica when Almond Windsor leather is selected on a Land Rover LR4 Landmark model. Please see Color and Trim Matrix on page 52 for interior combination availability.

B Almond / Arabica – (available on LR4 HSE and LR4 LANDMARK)



Interior shown: Almond Windsor Leather, with Almond Cubby Box Lid*1.

C Tan – (available on LR4 LANDMARK only)



Interior shown: Tan Windsor leather.

6



LAND ROVER APPROVED ACCESSORIES



Land Rover LR4 is so capable and adaptable it can get straight to work across a huge variety of vastly differing terrains, conditions and roles. Even so, some owners want to add their own stamp of individuality by tailoring their Land Rover LR4 to their specific needs with a range of stylish, practical accessories that are tough, versatile and bring an

opportunity for personalization to Land Rover LR4. Importantly, these accessories can be added at any stage during the vehicle's life – not just when it's new. Naturally, Land Rover Approved Accessories are designed, tested and manufactured to the same exacting standards as the original equipment fitted to your vehicle.

Vehicle shown left is a Land Rover LR4 HSE in Santorini Black and above is a Land Rover LR4 HSE in Aruba with optional Expedition Roof Rack.



Body Side Mouldings with Bright Insert
VPLAP0013

Body Side Mouldings without Bright Insert
VPLAP0012 (not shown)

Providing protection for your door panels from accidental damage by adjacent vehicles.



Driving Lamp Kit
VPLAV0019

High performance halogen driving lamps supplied with covers. Additional mounting brackets required.*

Driving Lamp Mounting Brackets
Pair – Direct to bumper VPLAV0098 (not shown)



Rear Access Ladder
AGP780020



Stainless Steel Trim Finisher Kit
VPLAB0044

Includes lower door trim finishers and a tailgate trim finisher.



Bright Finish Mirror Caps
VPLAB0132 – Upper

*Not compatible with Electric Winch (VPLAP0130).



Front Screen Shade
VPLFY0068

Reflects the sun's rays and helps to keep the interior of your vehicle cool.



Stainless Steel Rear Bumper Treadplate
LR006874



Front Mudflaps
CAS500010PCL

Mudflaps to reduce spray and help protect paintwork.



Rear Mudflaps
VPLAP0017

Mudflaps to reduce spray and help protect paintwork.



Underbody Protection
VPLAP0189

Underbody Protection (winch version)
VPLAP0188 (not shown)



Electric Winch
VPLAP0130

9,480lbs maximum load capacity. Includes cover for protection when not in use. Plug-in remote control helps provide safe operation from up to 11.81 feet.

Winch Accessory Kit
STC53202 (not shown)

Includes strap, snatch block, two shackles, heavy duty gloves and a storage bag.



Styled Valve Caps
Land Rover – LR027560
Union Jack – LR027664
Black Jack – LR027666
Nitrogen – VPLFW0076 (not shown)



Snow Traction System*
VPLAW0080

Applicable to 235/70 R17, 255/60 R18, 255/55 R19, 255/50 R20 wheel and tire sizes. Fit to front wheels only.



20 inch ten-spoke 'Style 104'
Tire Specification: 255/50 ZR20
VPLAW0003**

*These systems are not a substitute for driving safely with due care and attention and will not function under all circumstances, speeds, weather and road conditions, etc. Driver should not assume that these systems will correct errors of judgment in driving. Please consult the owner's manual or your local authorized Land Rover Retailer for more details. **Accessory wheel, rim only. To order the Land Rover Center Cap please quote part number LR023301.

Please note: When choosing vehicles fitted with specific wheel and tire combinations or optional wheels and tires, your intended use of the vehicle should be considered. Wheels with larger diameters and lower profile tires may offer certain styling or driving benefits, but may be more vulnerable to damage. Please discuss your requirements with your Land Rover Retailer. For further details on tire efficiency as required by EU legislation please speak to your Land Rover Retailer.



Cargo Divider
EOH500040

Separates luggage space into two protected sections. Lockable outer gate on one side. Must be fitted with Cargo Barrier. Not compatible with standard Loadspace Cover.**

Cargo Barrier
VUB501170

Easily removed. Retains cargo according to ECE-17 regulation. Can be used with standard Loadspace Cover.**



Loadspace Liner Tray

EBF500010 Not compatible with Cargo Barrier
EBF500080 Compatible with Cargo Barrier and Cargo Divider



Loadspace Retention Net
VUB503130

Utilizes loadspace tie-down points. Includes floor net and two ratchet straps. Strap length approximately 6.5 feet.



Flexible Loadspace Protector
VPLAS0015

Heavy duty fabric helps protect loadspace up to window height. Also covers loadspace floor with second row seats folded. Includes heavy duty gloves.



Loadspace Mat – Rubber
LR006401

Waterproof with retaining lip and hard wearing surface.



Rechargeable Flashlight
VPLAV0102

High power 300 Lumen rechargeable torch machined from solid aluminum with a black anodized finish. An integral charging dock in the loadspace ensures it is always charged and ready for action. Features maximum output with three further settings including a flashing mode. Land Rover branded.

**Can be fitted with Loadspace Rubber Mat (LR006401) and Rigid Loadspace Protector (EBF500080).

DIMENSIONS AND CAPABILITIES



Wheelbase 113.6 inches



Height 74.3 inches

Front wheel track 63.2 inches



Rear wheel track 63.5 inches

Width 80.8 inches mirrors folded
Width 86.6 inches mirrors out



Obstacle Clearance

Off-road height up to 12.2 inches
Standard ride height 7.3 inches

Overall length 190.1 inches



Standard Ride Height

With Alpine glass roof (not open) 74.1 inches
With fixed roof 74.3 inches
With roof rails 74.4 inches
With Alpine glass roof (open) 75.6 inches
With roof antennae 76.3 inches
With roof rails and crossbar fitted 78 inches
Access height setting will reduce each of the above by 2 inches

Loadspace Capacity

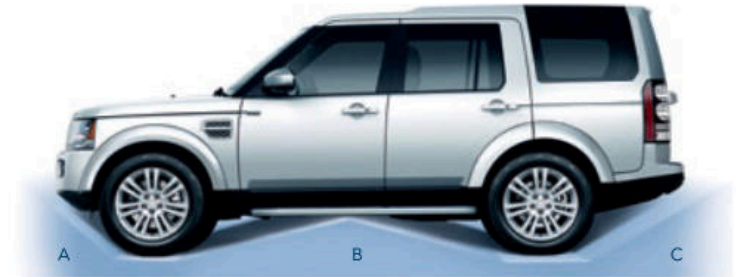
Rear seats upright
Height 40.4 inches (41.7 inches with Alpine roof)
Width 48.6 inches
Loadspace volume 44.5 cu ft
Loadspace width between arches 45.1 inches
Rear seats folded
Height 40.4 inches (41.7 inches with Alpine roof)
Width 48.6 inches
Loadspace volume 90.34 cu ft
Loadspace width between arches 45.1 inches
Maximum length at floor 76.8 inches

Headroom

Maximum front headroom 40.2 inches
Maximum front headroom with Alpine roof 40.4 inches
Second row headroom 41.1 inches
Second row headroom with Alpine roof 42.4 inches
Third row headroom 38.7 inches
Third row headroom with Alpine roof 40.1 inches

Wading depth*

Maximum wading depth
With Air suspension: 27.6 inches



	A	B	C
Ride Height			
Off-road	36.2°	27.3°	29.6°
Standard	32.2°	22.8°	26.7°

Turning Circle

Curb-to-curb 37.57 feet
Turns lock-to-lock 3.32



TECHNICAL SPECIFICATION

	GAS
	3.0L V6 SUPERCHARGED
	AUTOMATIC
POWER (HP)	340
ENGINE DATA	
Capacity (cc)	2,995
No. of cylinders	6
Cylinder layout	Longitudinal V6
Valves per cylinder	4
Bore (inches)	3.33
Stroke (inches)	3.50
Compression ratio (:1)	10.5
Maximum power hp / rpm	340 / 6,500
Maximum torque lb-ft / rpm	332 / 3,500
BRAKES	
Front type	Ventilated disc
Front diameter (inches)	14.17
Rear type	Ventilated disc
Rear diameter (inches)	13.77
Park brake	Electric Park Brake (EPB) integrated into brake caliper

PERFORMANCE AND KEY DATA

	GAS
	3.0L V6 SUPERCHARGED
	AUTOMATIC
POWER (HP)	340
WEIGHTS (lbs)	
Weight from	5,840
Gross vehicle weight	7,187
Maximum mass on each axle (front)	3,197
Maximum mass on each axle (rear)	4,090
TOWING (lbs)	
Unbraked trailer	1,653
Maximum towing	7,716
Maximum coupling point / nose weight	551
Maximum vehicle and trailer combination / Gross Train Weight	14,903
ROOF CARRYING (lbs)	
Maximum roof load (including Roof Rails)	165
PERFORMANCE	
Maximum speed mph**	121
Acceleration (secs) 0-60mph**	7.7
Fuel tank capacity – usable (gallons)	22.8

*These systems are not a substitute for driving safely with due care and attention and will not function under all circumstances, speeds, weather and road conditions, etc. Driver should not assume that these systems will correct errors of judgment in driving. Please consult the owner's manual or your local authorized Land Rover Retailer for more details.

**Always follow local speed limits.

LAND ROVER EXPERIENCE

Ever since its inception, Land Rover has been ready for anything. Its legendary capability has seen it tackle the most demanding of terrains, in the most difficult conditions. Its versatile interior has become synonymous with comfort and greater loadspace. And its 'can do' attitude has made it the most welcome of vehicles across the globe.

You can be part of the Land Rover story at one of our Land Rover Experience centers. You can see how each and every one of these iconic vehicles is built. You can take one out onto off-road tracks where your driving skills will be put to the test. Or you can go even further on one of our Adventure Travel holidays to such countries as Tanzania, Iceland or Morocco. Adventure awaits.



BEHIND THE SCENES TOURS

Ever wanted to discover how your Land Rover was built? To see the incredible journey upon which each and every one of our vehicles travels before you receive it?

You can experience how it is created using state-of-the-art technologies, the most efficient processes, the finest materials and British Craftsmanship at our facilities around the world.

From on-demand ordering of parts, to final trim and quality tests, the entire process will come to life before your eyes. It's a truly impressive display of engineering, craft and precision; one that you can then physically enjoy by taking a vehicle out onto one of our Experience Drives.

For more information, visit
landrover.com/behindthescenestours

EXPERIENCE DRIVES

Wading through mud. Crossing a Tipping Bridge. Or creeping up a slippery, steep incline. Our Experience centers have an array of obstacles and challenges to tax even the most accomplished of drivers.

Our experts will teach you how to navigate through some of the most demanding terrain. Then, you can take the skills that you have learned and use them when you drive every day.

There's a choice of courses from Taster Drives through to Full Day Experiences, available in over 40 Land Rover Experience operations around the globe. Each one provides a unique and hugely memorable adventure that you, your family and friends can all enjoy.

You'll never feel more confident behind the wheel.

To book, go to
landroverusa.com/experiencedrives



ADVENTURE TRAVEL

Which destination would top your wish list of places to go on an adventure? The wide open, savagely beautiful plains of the Serengeti? Or simply exploring castles and manors around Britain? Well, you can revel in an epic adventure from the comfort and luxury of a Land Rover, assured in the meticulous planning and local insight for which Abercrombie & Kent is renowned. These two great British brands have come together to bring you a world of exploration, adventure and luxury in iconic worldwide destinations.

Each trip has a local guide and expert Land Rover instructors to provide support and guidance, ensuring you get the most out of your driving experience. Added to which, you will stay in boutique accommodation. Be part of an extraordinary journey, reimagined.

For more information, visit
landroverusa.com/adventuretravel



IMPORTANT NOTICE: The colors reproduced here are subject to the limitations of the printing process and may therefore vary slightly from the actual vehicle. The company reserves the right to alter or withdraw any color finish without notice. Certain specifications are built to customer special order.

For delivery availability information, please consult your Land Rover Retailer. Some of these colors may not be obtainable in your country. Please check availability with your Land Rover Retailer. This publication is for international usage and while Land Rover takes the utmost care in ensuring that all the details in the publication are correct at time of printing, we are constantly striving for improvements, and therefore reserve the right to alter specifications and equipment without notice. Details of specifications and equipment are also subject to change to suit local market conditions and requirements, and not all products are available in every market. Some vehicles may be shown with accessories or optional equipment fitted.

These products vary from market to market. Please consult your Land Rover Retailer who will be pleased to advise you on current specifications. Retailers are not agents of Land Rover and have absolutely no authority to bind Land Rover to any express or implied undertaking or representation.

Castrol EDGE Professional recommended by Land Rover.

European models shown. US production vehicle may differ from the one shown.

Vehicle shown on front and back cover is a Land Rover LR4 Landmark in Santorini Black.



Jaguar Land Rover North America, LLC
555 MacArthur Blvd.
Mahwah, NJ 07430
1-800-FIND-4WD

LandRoverUSA.com

© 2015 Jaguar Land Rover North America, LLC.
Publication Number: LRML 5040/15

