

GX

—

LEXUS 2018

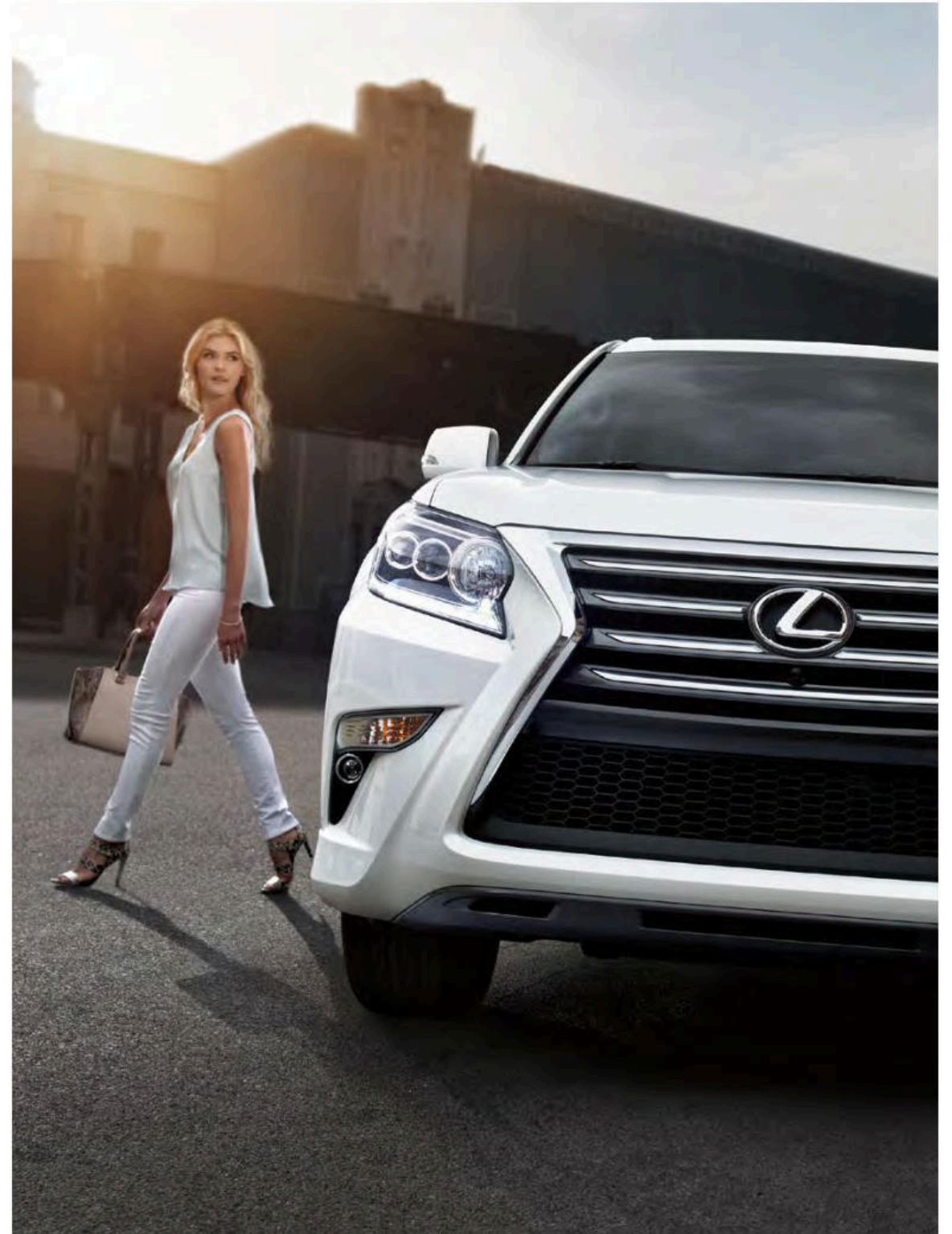


Powerful capability.
Exceptional craftsmanship.
A refusal to sacrifice either.

Because having it all means nothing
if it doesn't lead to the experience
of something greater.

The 2018 Lexus GX.

Experience Amazing



The 2018 GX



GX 460

The GX balances a 4.6-liter V8 engine, an intelligent six-speed automatic transmission, full-time four-wheel drive and powerful off-roading technology with angular LED illumination, handcrafted details and an elegantly versatile cabin.

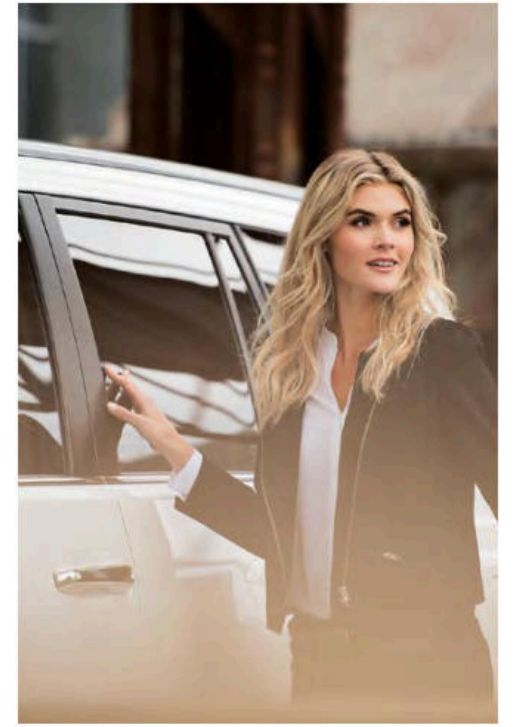
GX Luxury shown in Nebula Gray Pearl // Options shown



GX Luxury shown with Sepia leather and Mahogany wood interior trim // Options shown



Options shown





The available Sport Design Package offers a commanding front fascia treatment, darker rear taillamp housings, 18-inch Gunmetal Metallic alloy wheels² and more.

GX Luxury shown in Silver Lining Metallic with Sport Design Package // Options shown





GX Premium shown in Black Onyx // Options shown



CONQUER

Engineered for extreme conditions and designed to exacting standards.



The luxury SUV that pioneered rally-proven, off-road¹ performance and mastered responsive, on-road handling is back to do it once again. With an intelligent V8 engine, a robust towing capacity^{3,4} and full-time four-wheel drive, the 2018 GX offers high strength in high style.



Options shown

V8 VERSATILITY

4.6-LITER V8

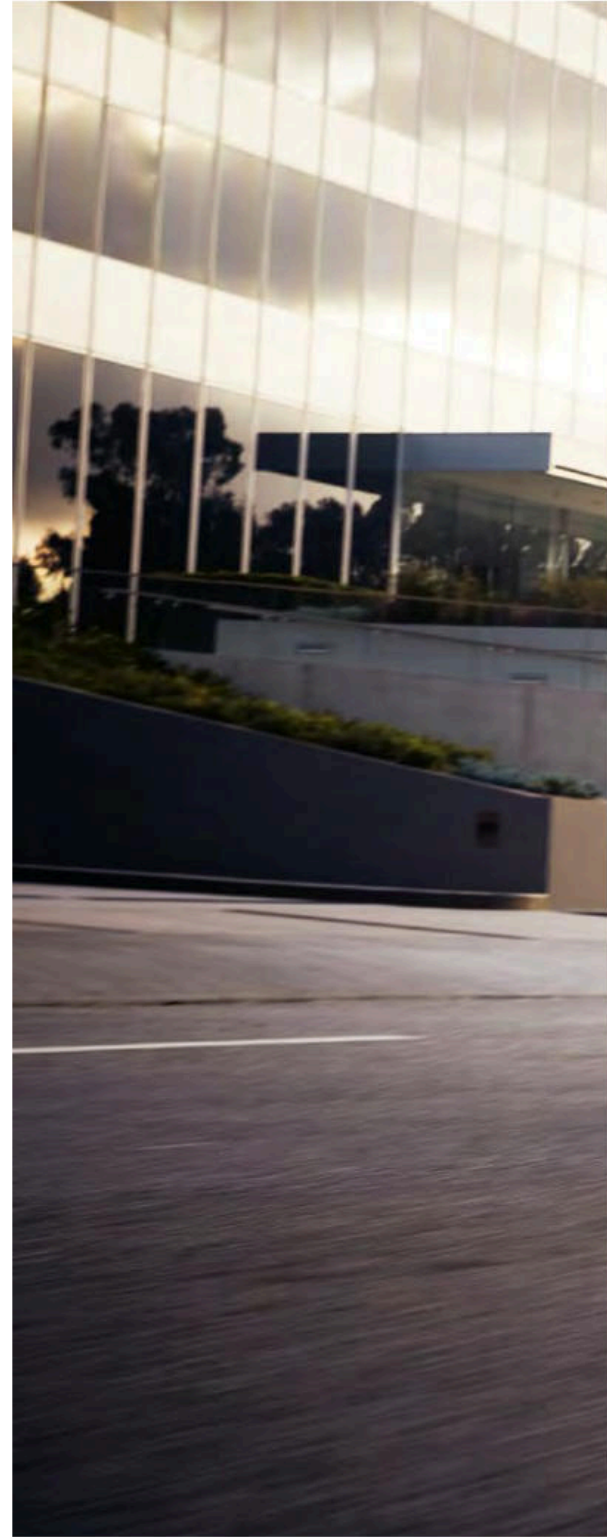
A naturally aspirated 4.6-liter V8 engine delivers an impressive 301 horsepower⁵ and pairs with a six-speed sequential-shift automatic Electronically Controlled Transmission with intelligence for smooth handling, effortless acceleration and quick shifting.

DUAL VVT-i

Harness engine power in the right way at the right time. Dual VVT-i helps to improve low-speed torque and high-speed horsepower, anticipating the power you need and delivering it instantaneously.

FULL-TIME 4WD

Dominate on-road and off-road¹ conditions with standard full-time four-wheel drive. Full-time 4WD directs power to all four wheels all of the time to help provide enhanced traction in a wide variety of driving situations. The transfer case can run in locked or unlocked mode, in high or low range.

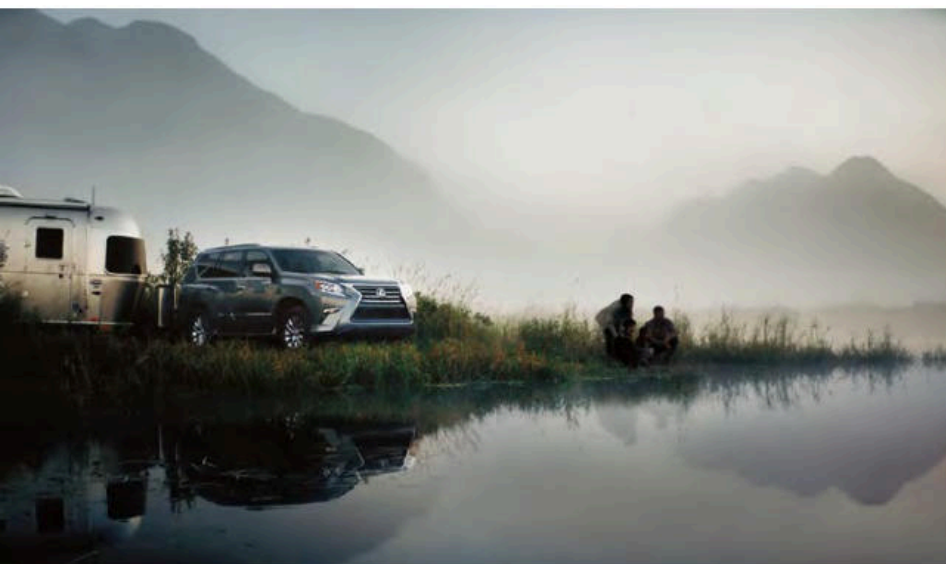


GX Premium shown in Black Onyx // Options shown

6,500-LB TOWING CAPABILITY

Engineered to accommodate almost any excursion, the GX is capable of towing up to 6,500 pounds,^{3,4} thanks to a solid body-on-frame construction and 329 lb-ft of torque⁵ at low engine speed. Taking a smart approach to strength, Trailer Sway Control⁶ helps detect and prevent excessive trailer movement. To help reduce sway, braking is applied independently to each wheel, and the throttle is moderated to help reduce vehicle speed. For added peace of mind, a flashing indicator alerts the driver when the system is taking corrective measures.

329
lb-ft of torque⁵



Options shown

ALL CONDITIONS. ALL POWERFUL.

A rally-proven suspension system meets exceptional off-road¹ capability.

KINETIC DYNAMIC SUSPENSION SYSTEM

Utilizing technology proven in World Rally Championship competition, the Kinetic Dynamic Suspension System automatically acts on the front and rear stabilizer bars to vary the degree of roll stiffness depending upon road conditions. This system not only improves on-road handling and ride comfort, it allows for greater suspension travel and articulation off-road¹ so that the vehicle remains remarkably level.

ADAPTIVE VARIABLE SUSPENSION

Let the suspension vary with your mood. With the flip of a switch, available AVS monitors and adjusts the electronically controlled shock absorber settings of each wheel, depending on road surface, vehicle speed and driving style.

TORSEN[®] TORQUE-SENSING LIMITED-SLIP CENTER DIFFERENTIAL

The TORSEN[®] torque-sensing limited-slip center differential[®] with electronic differential lock efficiently distributes engine power between the front and rear axles, optimizing traction in all conditions.



FOUR-WHEEL ACTIVE TRACTION CONTROL

Four-wheel Active Traction Control helps keep you securely on the road by using sensors on all four wheels to detect the onset of slippage and automatically apply the brake to the slipping wheel. In addition, power is automatically shifted to the wheels with the most traction.

CRAWL CONTROL

Challenging conditions are no match for our most advanced off-road¹ technology. Activated with the press of a button, available Crawl Control⁷ is designed to automatically maintain an optimal slow and steady pace over demanding landscapes.

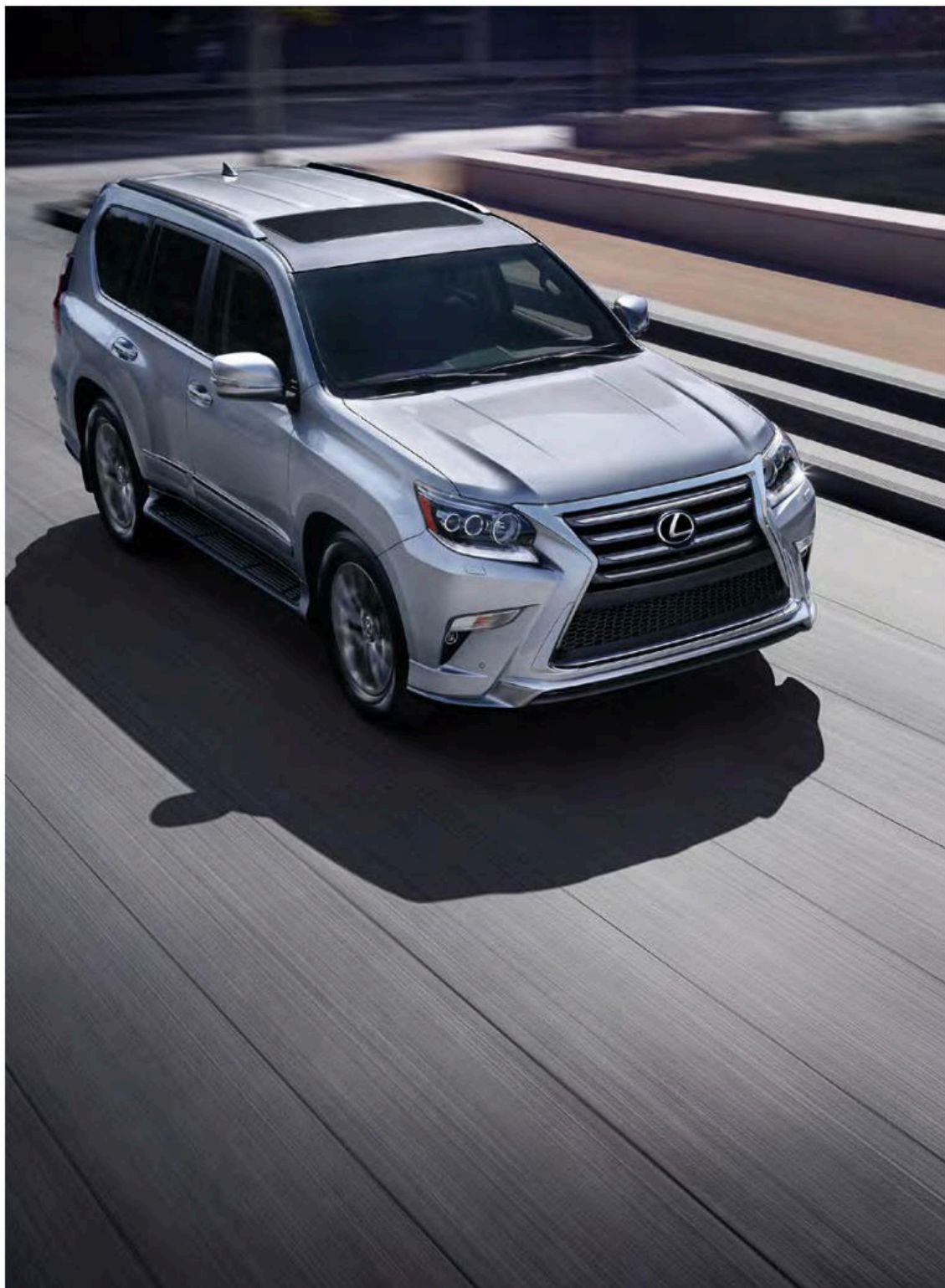
DOWNHILL ASSIST CONTROL

At the touch of a button, Downhill Assist Control[®] works with the Anti-lock Braking System and Active Traction Control to help keep the vehicle at a slow, constant descent speed and prevent the wheels from locking up. Virtually all the driver needs to do is watch the road and steer.

HILL-START ASSIST CONTROL

Hill-start Assist Control (HAC)[®] helps to increase driver confidence when ascending hills. While stopped on an incline, conventional vehicles may roll back once you step off the brake. HAC helps maintain the vehicle's position by applying the brakes to all four wheels until the vehicle begins moving forward.

GX Premium shown in Black Onyx // Options shown



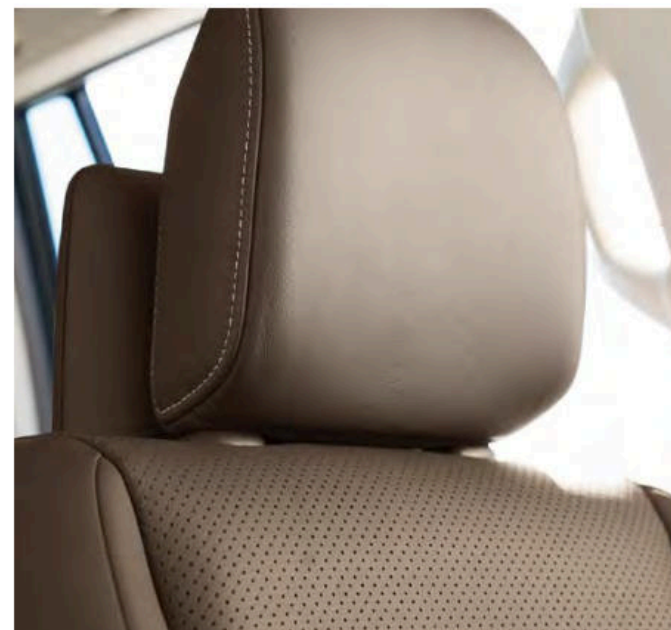
Experience unparalleled craftsmanship, bold details and a striking balance of comfort and capability. From an imposing stance to the pronounced front fascia to the available 18-inch Gunmetal Metallic alloy wheels,² the GX puts the open road at your command.

COMMAND

—
Aggressive design to dominate terrain and demand attention.



GX Luxury shown in Silver Lining Metallic with Sport Design Package // Options shown

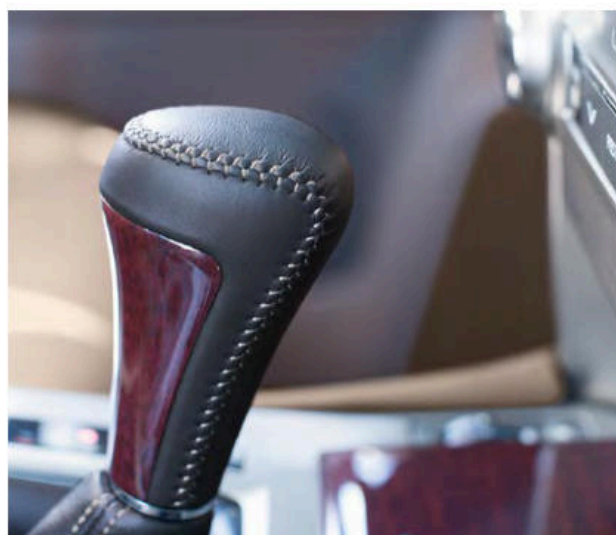


INTERIOR DESIGN

Handcrafted details and hand-selected materials accentuate our most refined GX yet.

Every GX comes from the hands of masters. That's why less than 5% of the available leather in the world is considered worthy of the Lexus badge. The available semi-aniline leather is dyed all the way through, unlike leathers with conventional surface dyes. A higher grade of leather must also be used since imperfections cannot be hidden. The Linear Espresso wood trim is another feat of craftsmanship. Its intricate grain pattern is meticulously developed by hand and requires multiple processes, over many days, to achieve. The available Mahogany wood trim is also hand-selected to ensure a consistent, seamless interior. Such attention to detail comes together in available features like the wood- and leather-trimmed heated steering wheel and wood- and leather-trimmed shift knob, both crafted exclusively with hand-selected genuine materials.

Available second-row captain's chairs¹⁰ enhance passenger accommodations and provide each second-row passenger with individual, contoured seats.





GX Premium shown with Sepia leather and Mahogany wood interior trim // Options shown

7 passenger seating

Versatility is only the beginning. The GX offers an expansive cabin space with exceptional comfort. In addition to the 40/20/40-split second-row seats, the driver and front passenger enjoy 10-way power-adjustable seats with lumbar adjustability. The third-row seats prove generous and convenient, as the seating folds flat into the cargo-area floor manually or, when equipped, with the press of a button. And a tilt-and-slide seat feature simplifies passenger-side access to the third row. Available heated and ventilated front seats, heated outboard second-row seats and three-zone climate control offer additional indulgence.



Control is closer than ever with comprehensive safety features, driver-centric innovations and available Lexus Enform,¹¹ our premium suite of connected technology. With available entertainment features such as a dual-screen Rear-Seat Entertainment System¹² and Mark Levinson[®] Premium Surround Sound Audio System,¹³ the GX offers control that caters to the entire family.

CONTROL

Master your surroundings in the most advanced GX ever built.



Options shown



360-DEGREE CONVENIENCE

LEXUS ENFORM

Available Lexus Enform¹¹ elevates connected technology and offers concierge-level convenience. From emergency assistance and live response center agents to the ability to start your engine remotely and access smartphone apps with ease, our premium suite of connected technology offers peace of mind with every drive.

available
17
 speaker audio system

MARK LEVINSON AUDIO

While most audio systems are adapted to and installed in a vehicle after it's produced, Mark Levinson technicians work alongside Lexus engineers from the onset of the development process. That's why the GX features a dynamic sound stage uniquely fitted to the cabin. Sound this rich even allows listeners to experience the arrangement of individual instruments and performers, which more accurately expresses the artist's original intent. The available Mark Levinson Premium Surround Sound Audio System¹³ features 7.1-channel architecture, 17 speakers and 330 watts of maximum power. The resulting audio experience immerses the cabin in multidimensional sound that was once reserved for six-figure home audio systems.

DELIVERY AND TECHNOLOGY SPECIALISTS

To help you get the most out of these and other Lexus features, a Vehicle Delivery Specialist will walk you through nearly every setting and function you desire. And to answer questions that arise after delivery, a Vehicle Technology Specialist can offer expert guidance in person or without you ever leaving the driveway via camera-enabled apps like FaceTime.¹⁷ Learn more about these complimentary services at lexus.com/specialists.

ADVANCED CLIMATE CONTROLS

The dual-zone climate control with smog sensor features individual settings to allow the driver and front passenger to adjust their preferred temperatures. Highly intelligent, the system even automatically switches into recirculation mode if it senses high levels of pollutants outside. The available three-zone automatic climate control with interior air filter, smog sensor and automatic recirculation mode helps to enhance peak comfort in any type of weather.

VOICE COMMAND

Available advanced voice command enables you to place compatible Bluetooth^{®14}-enabled phone calls and operate climate, audio and navigation functions using normal, everyday speech. If you say, "It's too hot in here," for example, the climate control will automatically lower the temperature by four degrees.

NAVIGATION SYSTEM

Use the high-resolution multimedia display or your voice to access the available Navigation System.¹⁵ This system can map millions of points of interest across the country; offers up-to-date traffic and weather information;¹⁶ 3D city views, and simulated views of approaching highway junctions; displays the current speed limit and can automatically display nearby gas stations if you begin to run low on fuel.



Options shown

LEXUS ADVANCED SAFETY

WIDE-VIEW FRONT AND SIDE MONITOR SYSTEM

This available system¹⁸ features a wide-angle, front-mounted camera to help you see around blind corners, such as when exiting a parking garage. A second camera located underneath the passenger-side mirror is particularly useful when parallel parking, navigating narrow passageways and in tight parking spaces.

BLIND SPOT MONITOR WITH REAR CROSS-TRAFFIC ALERT

For added peace of mind, the available Blind Spot Monitor²³ is designed to detect and warn you of vehicles approaching or positioned in the adjacent lanes. Additionally, Rear Cross-Traffic Alert²⁴ can help you when backing out of a parking space by notifying you of vehicles approaching from either side, under certain conditions.

HIGH-SPEED DYNAMIC RADAR CRUISE CONTROL

This available system²⁵ uses radar and camera technology to help you maintain a preset speed and following distance from the vehicle ahead. If you get closer than the preset distance, the throttle is automatically reduced and the brakes may be applied. As soon as the road ahead clears, your Lexus returns to its preset speed.



PRE-COLLISION SYSTEM WITH DRIVER ATTENTION MONITOR

To help prepare for and avoid potential front collisions, the available Pre-Collision System¹⁹ includes a Driver Attention Monitor²⁰ that is designed to warn you if you're facing away from the road when an obstacle is detected ahead. Should it determine a frontal collision is likely, it's designed to automatically prepare Brake Assist²¹ for increased braking response and can even automatically begin braking under certain conditions.

INTELLIGENT HIGH-BEAM HEADLAMPS

To help provide greater visibility for you as well as other drivers, available intelligent high-beam headlamps²² offer added illumination to help keep you focused on the road. When the road ahead is clear, the system defaults to high-beam mode, then temporarily switches to low beams when it senses the headlamps or taillamps of vehicles ahead.

LANE DEPARTURE ALERT

This available system²⁶ utilizes a high-resolution camera to monitor visible lane markings and determine the vehicle's position within a lane. If an inadvertent lane departure, or potential departure due to swaying, is detected at speeds above 32 mph, the system attempts to alert the driver with audible and visual warnings and steering-wheel vibrations.

INTUITIVE PARKING ASSIST

Available Intuitive Parking Assist²⁷ utilizes inconspicuous sensors integrated into the front and rear bumpers that are designed to detect surrounding objects. Using audible tones and an indicator on the multimedia display, the system can notify you of a detected object's location and proximity, helping with routine tasks like parallel parking.

GX Luxury shown in Silver Lining Metallic with Sport Design Package (left) // Options shown

GX 460

301

HORSEPOWER⁵

4.6

LITER

V8

ENGINE

329

LB-FT TORQUE⁵

4WD

STANDARD

6-SPEED

AUTOMATIC TRANSMISSION

6,500

LB TOWING CAPACITY³⁴

15/18/16

CTY / HWY / CMB
ESTIMATED MPG²⁸

OVERALL LENGTH 192.1 IN / WHEELBASE 109.8 IN / WIDTH 74.2 IN (MIRRORS FOLDED) / HEIGHT 74.2 IN (73.8 IN GX LUXURY)

DIMENSIONS

STANDARD ON EVERY GX

GX • SmartAccess^{29,30} with push-button Start/Stop / 18-inch six-spoke alloy wheels² / NuLuxe interior trim / Lexus Display³¹ Audio with color multimedia display and nine speakers / Subscription-free Traffic and Weather updates via HD Radio^{TM16} / Siri[®] Eyes Free³² / Backup camera³³ / Trailer Sway Control⁶ / Power moonroof / Privacy glass / Running boards / Lexus Memory System / 10-way power-adjustable front seats / Reclining, sliding middle-row seats with 40/20/40-split seatback / Fold-flat third-row seats / Voice command / Bluetooth¹⁴ and USB smartphone connectivity / Dual-zone climate control with interior air filter / LED headlamps and daytime running lights (DRL) / 10 standard airbags³⁴ / Lexus Enform Safety Connect³⁵ Service Connect³⁶ and Remote³⁷ app. Complimentary for the first year of ownership / Complimentary maintenance services (please refer to the *Warranty and Services Guide* for details)

GX PREMIUM • Includes all GX features and Navigation Package, plus: 18-inch split-six-spoke alloy wheels² / Leather interior trim / Heated and ventilated front seats and heated second-row outboard seats / Three-zone automatic climate control with interior air filter, smog sensor and automatic recirculation mode / Rain-sensing wipers / Windshield wiper de-icer / LED foglamps / Intuitive Parking Assist²⁷

GX LUXURY • Includes all GX Premium features, plus: Adaptive Variable Suspension (AVS) / Auto-leveling rear air suspension / 18-inch split-six-spoke alloy wheels² with Liquid Graphite finish / Semi-aniline leather interior trim / Blind Spot Monitor²³ with Rear Cross-Traffic Alert²⁴ / Power-folding, electrochromic (auto-dimming) outside mirrors / Wood- and leather-trimmed heated steering wheel / Power-reclining and -folding third-row seats / Headlamp washers / Cargo-area tonneau cover

INDIVIDUAL OPTIONS

Blind Spot Monitor²³ with Rear Cross-Traffic Alert²⁴ and power-folding electrochromic (auto-dimming) exterior mirrors

Headlamp washers (GX, GX Premium)

Heated and ventilated front seats (GX)

Second-row captain's chairs¹⁰ (GX Premium)

Intuitive Parking Assist²⁷ (GX)

Wood- and leather-trimmed steering wheel and shift knob (GX Premium)

Cargo-area tonneau cover (GX, GX Premium)

Dual-screen DVD Rear-Seat Entertainment System (RSES)¹² (GX Luxury)



GX Luxury shown in Starfire Pearl // Options shown



"Highest in Customer Satisfaction with Dealer Service among Luxury Brands"³⁸

-J.D. POWER



NAVIGATION PACKAGE

- A Navigation System¹⁵ and Lexus Enform App Suite¹¹
 High-resolution color LCD display
 Lexus Enform Destination Assist.¹¹ Complimentary for the first year of ownership.

MARK LEVINSON PREMIUM SURROUND SOUND AUDIO PACKAGE

- Includes Navigation Package, plus:
 Mark Levinson 17-speaker, 330-watt Premium Surround Sound Audio System
 7.1-channel architecture

DRIVER SUPPORT PACKAGE (Special order on GX Luxury)

- Includes Navigation and Mark Levinson Premium Surround Sound Audio Packages, plus:
 Pre-Collision System¹⁹ with Dynamic Radar Cruise Control²⁵
 Driver Attention Monitor²⁰
 Lane Departure Alert²⁶
 B Intelligent high-beam headlamps²²
 Wide-view Front and Side Monitor system¹⁸
 Crawl Control⁷



SPORT DESIGN PACKAGE (GX Premium, GX Luxury)

- 18-inch split-six-spoke alloy wheels² with Gunmetal Metallic finish
 Sport Design front fascia and lower grille surround
 Sport Design side mirrors with chrome detail
 Sport Design rear valance
 C Chrome exhaust tip
 Scarlet taillamps
 Second-row captain's chairs¹⁰ (GX Luxury)

ACCESSORIES

- CHROME EXHAUST TIP**
 This polished stainless-steel tip is eye-catching and corrosion-resistant.

- F SPORT 18-INCH 12-SPOKE ALLOY WHEELS^{2,39}**
 Magnify the powerful stance of the GX with these high-gloss alloy wheels.

- TOW HITCH WITH BALL MOUNT^{3,4}**
 Engineered to meet your vehicle's maximum tow rating.

- PAINT PROTECTION FILM⁴⁰ BY 3M™**
 Protect your car with a durable, nearly invisible urethane film.

- D **ALL-WEATHER FLOOR LINERS⁴¹ WITH CARGO TRAY**
 Tub-style perimeter design helps provide optimal protection and an ideal fit.



For a complete list of Genuine Lexus Accessories, visit lexus.com/GX/accessories. Options shown.

WHEELS



18-in

Six-spoke alloy wheels²
STANDARD GX



18-in

Split-six-spoke alloy wheels²
STANDARD GX PREMIUM



18-in

Split-six-spoke alloy wheels²
with Liquid Graphite finish
STANDARD GX LUXURY



18-in

Split-six-spoke alloy wheels²
with Gunmetal Metallic finish
STANDARD GX SPORT
DESIGN PACKAGE



18-in

F SPORT 18-inch 12-spoke
alloy wheels^{2,39}
AVAILABLE



GX Luxury shown in Nebula Gray Pearl // Options shown

COLOR, MATERIAL & FINISH



BLACK NULUXE	●	
BLACK LEATHER		■
SEPIA NULUXE	●	
SEPIA LEATHER		■
ECRU LEATHER		■

INTERIOR & TRIM



STARFIRE PEARL	●	●	●	●	●	●
SILVER LINING METALLIC	■	■	■	■	■	■
NEBULA GRAY PEARL	●	●	●	●	●	●
NIGHTFALL MICA	■	■	■	■	■	■
FIRE AGATE PEARL		●		■		■
BLACK ONYX					■	■
CLARET MICA						■

EXTERIOR

GX ●
GX Premium/Luxury ■

GX 460

301

HORSEPOWER⁵

4.6

LITER

V8

ENGINE

329

LB-FT TORQUE⁵

4WD

STANDARD

6-SPEED

AUTOMATIC TRANSMISSION

6,500

LB TOWING CAPACITY³⁴

15/18/16

CTY / HWY / CMB
ESTIMATED MPG²⁸

WARRANTY Four-year/50,000-mile Lexus Limited Warranty. Six-year/70,000-mile Powertrain Warranty. Six-year/unlimited-mileage Corrosion Perforation Warranty. All warranties with zero deductible. See the *GX Warranty and Services Guide* at your Lexus dealer for details.

DISCLOSURES 1. The GX 460 is designed to meet most off-road driving requirements. Abusive use may result in bodily harm or damage. Lexus encourages responsible operation to help protect you, your vehicle and the environment. Seatbelts should be worn at all times. Do not allow passengers to ride in cargo area. Tow hitch receivers/ball mount kits are not intended to provide crash protection. 2. 18-in performance tires are expected to experience greater tire wear than conventional tires. Tire life may be substantially less than 15,000 miles, depending upon driving conditions. 3. Please consult your Lexus dealer or Owner's Manual for towing and load specifications. 4. Before towing, confirm your vehicle and trailer are compatible, hooked up properly and you have any necessary additional equipment. If gross trailer weight is above 5,000 lb (2,268 kg), it is necessary to use a weight-distributing hitch with sufficient capacity. Do not exceed any Weight Ratings and follow all instructions and cautions from your trailer-hitch manufacturer and vehicle Owner's Manual. The maximum amount you can tow depends on the total weight of any cargo, occupants and available equipment. 5. Ratings achieved using the required premium unleaded gasoline with an octane rating of 91 or higher. If premium fuel is not used, performance will decrease. 6. Trailer Sway Control (TSC) is an electronic system designed to help the driver maintain vehicle control under adverse conditions. It is not a substitute for safe driving practices. Factors including speed, road conditions, weather and driver steering input can all affect whether TSC will be effective in preventing a loss of control. See Owner's Manual for additional limitations and details. 7. Crawl Control is designed for driving on difficult terrain at low speeds. It assists the driver by controlling acceleration and braking, allowing the driver to focus on steering. The GX 460 is designed to meet off-road driving requirements, but off-roading is inherently dangerous. Always wear seatbelts. See Owner's Manual for additional limitations and details. 8. TORSEN[®] is a registered trademark of Zexel Torsen, Inc. 9. Downhill Assist Control is designed to help the driver maintain vehicle control and speed on steep downhill descents. Hill-start Assist Control is designed to help minimize backward rolling on steep ascents. Neither system is a substitute for safe driving judgment and practices. Factors including speed, grade, surface conditions and driver input can all affect whether DAC and HAC will be effective in preventing a loss of control. See Owner's Manual for additional limitations and details. 10. Available second-row captain's chairs reduce vehicle seating capacity to a maximum of six passengers. 11. Be sure to obey traffic regulations and maintain awareness of road and traffic conditions at all times. Apps/services vary by phone/carrier; functionality depends on many factors. Select apps use large amounts of data; you are responsible for charges. Apps & services subject to change. See lexus.com/enform for details. 12. A single-disc DVD player is included. A separate DVD player or game system utilizing the center console's video/audio inputs is required in order to use the split-screen function of the dual-screen system. 13. Mark Levinson[®] is a registered trademark of Harman International Industries, Inc. 14. Concentrating on the road should always be your first priority while driving. Do not use the hands-free phone system if it will distract you. The Bluetooth[®] word mark and logos are registered trademarks owned by Bluetooth SIG, Inc. and any use of such marks by Lexus is under license. A compatible Bluetooth-enabled phone must first be paired. Phone performance depends on software, coverage & carrier. 15. Be sure to obey traffic regulations and maintain awareness of road and traffic conditions at all times. Availability & accuracy of the information provided by the Navigation System is dependent upon many factors. Use common sense when relying on information provided. Services & programming subject to change. Services not available in every city or roadway. Updates may be available from your dealer at an additional cost. See Owner's Manual for details. 16. HD Radio[™] technology manufactured under license from iBiquity Digital Corporation U.S. and Foreign Patents. HD Radio[™] and the HD, HD Radio, and "Arc" logos are proprietary trademarks of iBiquity Digital Corp. 17. Face Time[®] is a registered trademark of Apple Inc. All rights reserved. 18. The Wide-view Front and Side Monitor system does not provide a comprehensive view of the front and side areas of the vehicle. You should also look around outside your vehicle and use your mirrors to confirm clearance. Environmental factors may limit effectiveness and view may become obscured. See Owner's Manual for additional limitations and details. 19. The Pre-Collision System is designed to help reduce the crash speed and damage in certain frontal collisions only. It is not a collision-avoidance system and is not a substitute for safe and attentive driving. System effectiveness is dependent on road, weather and vehicle conditions. See Owner's Manual for additional limitations and details. 20. The Driver Attention Monitor is designed to alert the driver if a potential hazard is detected ahead and the driver's face appears to be turned away. It is not a collision-avoidance system and is not a substitute for safe and attentive driving. System effectiveness depends on many factors, such as speed, driver input, light and road conditions. See Owner's Manual for details. 21. Brake Assist is designed to help the driver take full advantage of the benefits of ABS. It is not a substitute for safe driving practices. Braking effectiveness also depends on proper vehicle maintenance, tire and road conditions. See Owner's Manual for additional limitations and details. 22. Intelligent high beams operate at speeds above 25 mph. Factors such as a dirty windshield, weather, lighting and terrain limit effectiveness, requiring driver to manually operate the high beams. See Owner's Manual for additional limitations and details. 23. Do not rely exclusively on the Blind Spot Monitor. Always look over your shoulder and use your turn signal. There are limitations to the function, detection and range of the monitor. See Owner's Manual for additional limitations and details. 24. Do not rely exclusively on the Rear Cross-Traffic Alert system. Always look over your shoulder and use your mirrors to confirm rear clearance. There are limitations to the function, detection and range of the system. See Owner's Manual for additional limitations and details. 25. Dynamic Radar Cruise Control is designed to assist the driver and is not a substitute for safe and attentive driving practices. System effectiveness is dependent on road, weather and traffic conditions. See Owner's Manual for additional limitations and details. 26. Lane Departure Alert is designed to read lane markers under certain conditions and provide visual and audible alerts when lane departure is detected. It is not a collision-avoidance system or a substitute for safe and attentive driving. Effectiveness is dependent on road, weather and vehicle conditions. See Owner's Manual for additional limitations and details. 27. Intuitive Parking Assist (IPA) is designed to assist drivers in avoiding potential collisions at speeds of 9 mph or less. Certain vehicle and environmental factors, including an object's shape and composition, may affect the ability of the IPA to detect it. Always look around outside the vehicle and use mirrors to confirm clearance. See Owner's Manual for additional limitations and details. 28. Preliminary mileage estimates determined by Lexus. EPA mileage estimates not available at time of publishing. Actual mileage will vary. 29. The SmartAccess system may interfere with some pacemakers or cardiac defibrillators. If you have one of these medical devices, please talk to your doctor to see if you should deactivate this system. 30. The engine immobilizer is a state-of-the-art anti-theft system. When you insert your key into the ignition switch or bring a SmartAccess fob into the vehicle, the key transmits an electronic code to the vehicle. The engine will only start if the code in the transponder chip inside the key/fob matches the code in the vehicle's immobilizer. Because the transponder chip is embedded in the key/fob, it can be costly to replace. If you lose a key or fob, your Lexus dealer can help. Alternatively, you can find a qualified independent locksmith to perform high-security key services by consulting your local Yellow Pages or by contacting www.aloa.org. 31. Be sure to obey traffic regulations and maintain awareness of road and traffic conditions. 32. Always drive safely, obey traffic laws & focus on the road while driving. Siri[®] is available on select iPhone/iPad models & requires Internet access. Siri[®] is not available in all languages or all areas & features vary by area. Some Siri[®] functionality & commands are not accessible in the vehicle. Data charges may apply. See Apple.com & phone carrier for details. Siri[®] is a registered trademark of Apple Inc. 33. The backup camera does not provide a comprehensive view of the rear area of the vehicle. You should also look around outside your vehicle and use your mirrors to confirm rearward clearance. Environmental conditions may limit effectiveness and view may become obscured. See Owner's Manual for additional limitations and details. 34. All the airbag systems are Supplemental Restraint Systems. All airbags (if installed) are designed to inflate only under certain conditions and in certain types of severe collisions. To decrease the risk of injury from an inflating airbag, always wear seatbelts and sit upright in the middle of the seat as far back as possible. Do not put objects in front of an airbag or around the seatback. Do not use a rearward-facing child seat in any front passenger seat. See Owner's Manual for further information & warnings. 35. Contact with the response center may not be available in all areas. Service Agreements required. A variety of subscription terms available; charges will vary. 36. Information provided is based on the last time data was collected from the vehicle and may not be up to date. System functionality depends on vehicle connection. 37. Use only if aware of circumstances surrounding vehicle and it is safe to do so (e.g., do not remotely start engine if vehicle is in an enclosed space). Functionality depends on many factors, such as vehicle and smartphone connectivity. Registration and app download are required. Subscription purchase required after trial. See usage precautions and service limitations in Owner's Manual. 38. Lexus received the highest numerical score among 12 luxury brands in the J.D. Power 2017 U.S. Customer Service Index (CSI) Study, based on 70,342 total responses, measuring customer satisfaction with dealer and non-dealer service during the first 3 years of ownership, surveyed October-December 2016. Your experiences may vary. Visit jdpower.com. 39. F SPORT Accessories are warranted for 12 months from the date of installation or for the balance of the new-car or Certified Pre-Owned (CPO) warranty in force at the date of installation, whichever is greater, when installed by an authorized Lexus dealer. F SPORT Accessories installed by anyone other than an authorized Lexus dealer are warranted for 12 months from the date of purchase only, and the warranty coverage is limited to the replacement value of the F SPORT Accessories. These warranties do not cover maintenance services such as replacement of brake pads/linings and clutch linings or noise, vibration, cosmetic conditions and other deterioration caused by normal wear and tear. Part failure caused by improper installation by anyone other than an authorized Lexus dealer may void the F SPORT Accessories warranty, the new-vehicle warranty or both. F SPORT is a trademark of Toyota Motor Corporation. Products available through participating Lexus dealers. 40. Genuine Lexus Paint Protection Film by 3M[™] is designed for specific sections of the hood and front fenders. Depending on the model, it may also be applied to select portions of the front bumper for an additional charge. Lexus Genuine Accessory Warranty will only apply when the installation is performed by a trained Lexus-approved installer. See Lexus dealer for details. 41. Carpet and all-weather floor liners/mats are model-specific with model names. Floor liners/mats are designed for use in a specific model and model year vehicle and SHOULD NOT be used in any other vehicle. To avoid potential interference with pedal operation, each liner/mat must be secured with its fasteners. Do not install a floor liner/mat on top of an existing floor liner/mat.

Lexus strives to build vehicles to match customer interest, and thus they typically are built with popular options and option packages. Not all options/packages are available separately, and some may not be available in all regions of the country. See lexus.com for information about options/packages commonly available in your area. If you would prefer a vehicle without any or with different options, contact your dealer to check for current availability or the possibility of placing a special order. Specifications, features, equipment, technical data, performance figures, options, and color and trim are based upon information available at time of printing, are subject to change without notice, and are for mainland U.S.A. vehicles only. Some vehicles shown with available equipment. See your Lexus dealer for details. Lexus reminds you to wear seatbelts, secure children in rear seat, obey all traffic laws and drive responsibly. For more information, call 800-USA-LEXUS (872-5398) or visit lexus.com. To learn more about your financing options, contact your Lexus dealer or call Lexus Financial Services at 800-874-7050.



lexus.com PB-2811 (08/17) 00217GXBR018 Printed in U.S.A. (65M) ©2017 Lexus

