

# GX



LEXUS 2019



Unparalleled craftsmanship.

Unrestrained capability.

A refusal to sacrifice either.

Because having it all means nothing  
if it doesn't lead to the experience  
of something greater.

The 2019 Lexus GX.

---

*Experience Amazing*



The 2019 GX



#### GX 460

The GX balances a 4.6-liter V8 engine, an intelligent six-speed automatic transmission, full-time four-wheel drive and powerful off-roading<sup>1</sup> technology with angular LED illumination, handcrafted details and an elegantly versatile cabin.

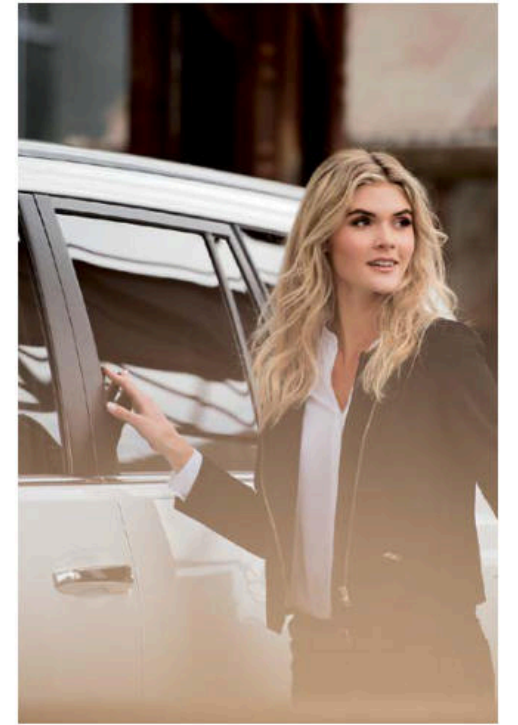
GX shown in Nebula Gray Pearl // Options shown



GX shown with Sepia leather and Mahogany wood interior trim // Options shown



GX shown in Starfire Pearl // Options shown





GX shown in Nightfall Mica // Options shown



GX shown in Starfire Pearl // Options shown



GX shown in Black Onyx // Options shown



# CONFIDENCE

Meticulously engineered to create an amazing driving experience wherever you go.



The luxury SUV that pioneered rally-proven off-road<sup>1</sup> performance and mastered responsive on-road handling boldly returns to do it once again. With an intelligent V8 engine, a robust towing capacity<sup>2,3</sup> and full-time four-wheel drive, the 2019 GX offers high strength in high style.



Options shown

## ALL-ROAD VERSATILITY

*A suspension system so advanced, it can automatically adapt to the terrain.*

---

### KINETIC DYNAMIC SUSPENSION SYSTEM

Utilizing technology proven in World Rally Championship competition, the Kinetic Dynamic Suspension System automatically acts on the front and rear stabilizer bars to vary the degree of roll stiffness depending upon road conditions. This system not only improves on-road handling and ride comfort, it allows for greater suspension travel and articulation off-road<sup>1</sup> so that the vehicle remains remarkably level.



GX shown in Black Onyx // Options shown

## 6,500-LB TOWING CAPABILITY

Engineered to accommodate almost any excursion, the GX is capable of towing up to 6,500 pounds,<sup>2,3</sup> thanks to a solid body-on-frame construction and a 4.6-liter V8 with 329 lb-ft of torque<sup>4</sup> at low engine speed. Taking a smart approach to strength, Trailer Sway Control<sup>5</sup> helps detect and prevent excessive trailer movement. To help reduce sway, braking is applied independently to each wheel, and the throttle is moderated to help reduce vehicle speed. For added peace of mind, a flashing indicator alerts the driver when the system is taking corrective measures.

329  
lb-ft of torque<sup>4</sup>



GX shown in Silver Lining Metallic // Options shown

## ALL CONDITIONS. ALL POWERFUL.

*Advanced technology meets  
exceptional off-road<sup>1</sup> capability.*

### FULL-TIME 4WD

Dominate on-road and off-road<sup>1</sup> conditions with standard full-time four-wheel drive. Full-time 4WD directs power to all four wheels all of the time to help provide enhanced traction in a wide variety of driving situations. The transfer case can run in locked or unlocked mode, in high or low range.

### ADAPTIVE VARIABLE SUSPENSION

Let the suspension vary with your mood. With the flip of a switch, available AVS monitors and adjusts the electronically controlled shock absorber settings of each wheel, depending on road surface, vehicle speed and driving style.

### TORSEN® TORQUE-SENSING LIMITED-SLIP CENTER DIFFERENTIAL

The TORSEN® torque-sensing limited-slip center differential<sup>7</sup> with electronic differential lock efficiently distributes engine power between the front and rear axles, optimizing traction in all conditions.



### FOUR-WHEEL ACTIVE TRACTION CONTROL

Four-wheel Active Traction Control helps keep you securely on the road by using sensors on all four wheels to detect the onset of slippage and automatically apply the brake to the slipping wheel. In addition, power is automatically shifted to the wheels with the most traction.

### CRAWL CONTROL

Challenging conditions are no match for our most advanced off-road<sup>1</sup> technology. Activated with the press of a button, available Crawl Control<sup>6</sup> is designed to automatically maintain an optimal slow and steady pace over demanding landscapes.

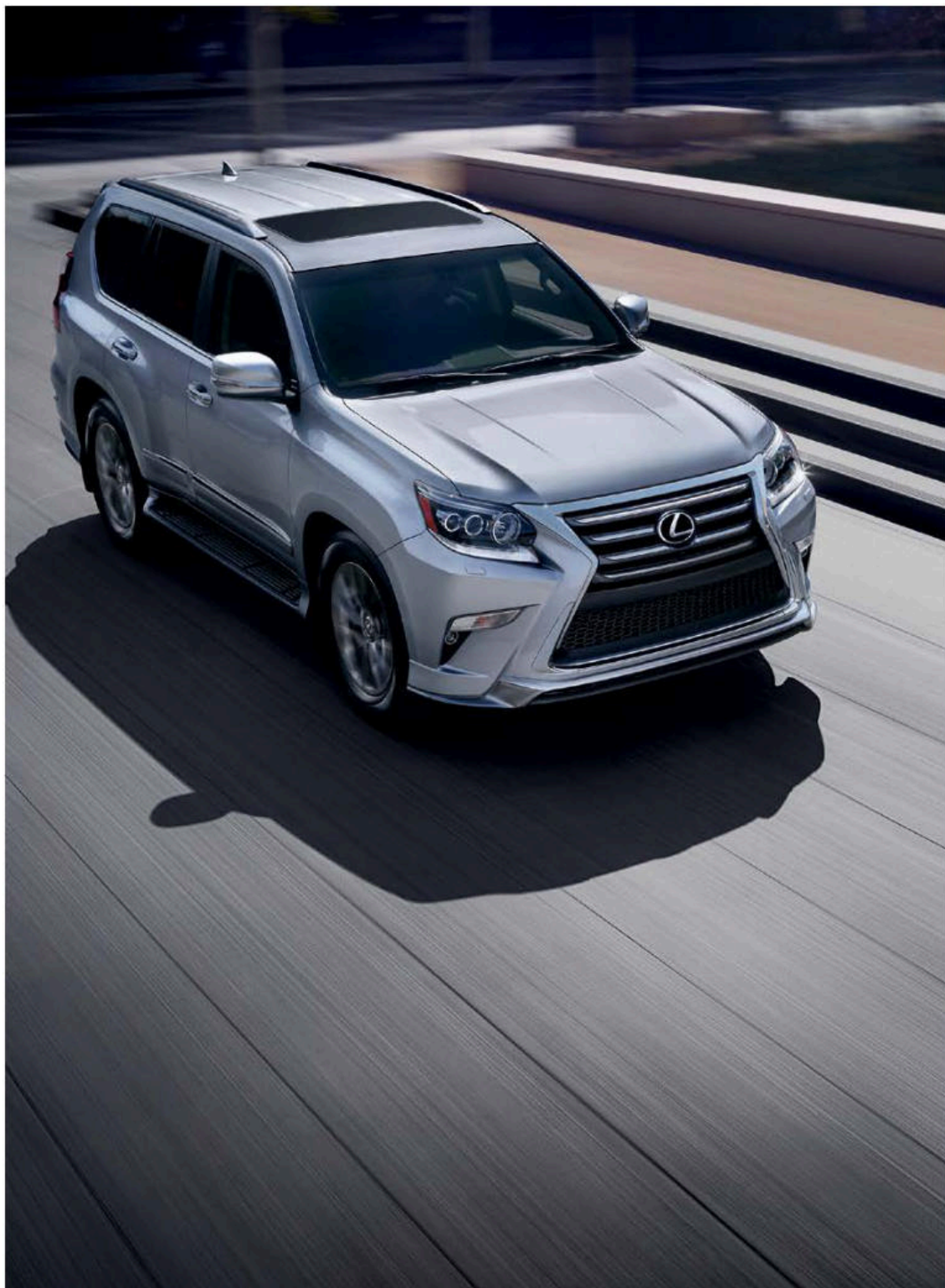
### DOWNHILL ASSIST CONTROL

At the touch of a button, Downhill Assist Control<sup>8</sup> works with the Anti-lock Braking System and Active Traction Control to help keep the vehicle at a slow, constant descent speed and prevent the wheels from locking up. Virtually all the driver needs to do is watch the road and steer.

### HILL-START ASSIST CONTROL

Hill-start Assist Control (HAC)<sup>9</sup> helps to increase driver confidence when ascending hills. While stopped on an incline, conventional vehicles may roll back once you step off the brake. HAC helps maintain the vehicle's position by applying the brakes to all four wheels until the vehicle begins moving forward.

GX shown in Black Onyx // Options shown



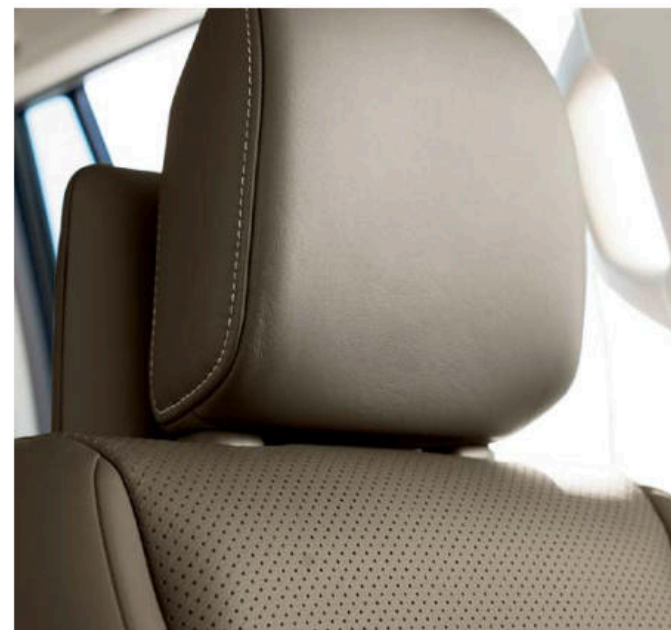
Experience unparalleled craftsmanship, bold details and a striking balance of comfort and capability. From an imposing stance to the pronounced front fascia to the available 18-inch Gunmetal Metallic alloy wheels,<sup>9</sup> the GX puts the open road at your command.

## CRAFTSMANSHIP

—  
Designed to the highest and most exact standards. Ours.



GX shown in Silver Lining Metallic // Options shown



## INTERIOR DESIGN

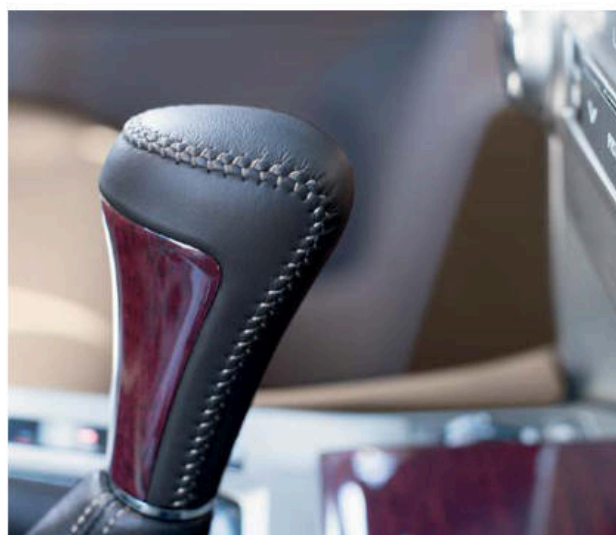
*Handcrafted details and hand-selected materials accentuate our most refined GX yet.*

---

Every GX comes from the hands of masters. The leather for the interior is carefully selected from around the world and only a fraction of that is considered worthy of the Lexus badge. The available semi-aniline leather is dyed all the way through, unlike leathers with conventional surface dyes. A higher grade of leather must also be used since imperfections cannot be hidden. The Linear Espresso wood trim is another feat of craftsmanship. Its intricate grain pattern is meticulously developed by hand and requires multiple processes, over many days, to achieve. The available Mahogany wood trim is also hand-selected to ensure a consistent, seamless interior. Such attention to detail comes together in available features like the wood- and leather-trimmed heated steering wheel and wood- and leather-trimmed shift knob, both crafted exclusively with genuine hand-selected materials.

---

Available second-row captain's chairs<sup>10</sup> enhance passenger accommodations and provide each second-row passenger with an individual, contoured seat.





GX shown with available Sepia NuLuxe<sup>®</sup> and Mahogany wood interior trim // Options shown

# 7

passenger seating

Versatility is only the beginning. The GX offers an expansive cabin with exceptional comfort. In addition to the 40/20/40-split second-row seats, the driver and front passenger enjoy 10-way power-adjustable seats with lumbar adjustability. The third-row seats prove generous and convenient, as the seating folds flat into the cargo-area floor manually or, when equipped, with the press of a button. And a tilt-and-slide seat feature simplifies passenger-side access to the third row. Available heated and ventilated front seats, heated outboard second-row seats and three-zone climate control offer additional indulgence.



Control is closer than ever with comprehensive safety features, driver-centric innovations and more advanced Lexus Enform,<sup>12</sup> our available premium suite of connected technology. With available entertainment features such as a dual-screen Rear-Seat Entertainment System<sup>13</sup> and Mark Levinson® Premium Surround Sound Audio System,<sup>14</sup> the GX offers control that caters to the entire family.

# CONTROL

Master your surroundings in the most advanced GX ever built.



Options shown

## LEXUS ADVANCED SAFETY

### WIDE-VIEW FRONT AND SIDE MONITOR SYSTEM

This available system<sup>15</sup> features a wide-angle, front-mounted camera to help you see around blind corners, such as when exiting a parking garage. A second camera located underneath the passenger-side mirror is particularly useful when parallel parking, navigating narrow passageways and in tight parking spaces.

### BLIND SPOT MONITOR WITH REAR CROSS-TRAFFIC ALERT

For added peace of mind, the available Blind Spot Monitor<sup>20</sup> is designed to detect and warn you of vehicles approaching or positioned in the adjacent lanes. Additionally, Rear Cross-Traffic Alert<sup>21</sup> can help you when backing out of a parking space by notifying you of vehicles approaching from either side, under certain conditions.

### HIGH-SPEED DYNAMIC RADAR CRUISE CONTROL

This available system<sup>22</sup> uses radar and camera technology to help you maintain a preset speed and following distance from the vehicle ahead. If you get closer than the preset distance, the throttle is automatically reduced and the brakes may be applied. As soon as the road ahead clears, your Lexus returns to its preset speed.



### PRE-COLLISION SYSTEM WITH DRIVER ATTENTION MONITOR

To help prepare for and avoid potential front collisions, the available Pre-Collision System<sup>16</sup> includes a Driver Attention Monitor<sup>17</sup> that is designed to warn you if you're facing away from the road when an obstacle is detected ahead. Should it determine a frontal collision is likely, it's designed to automatically prepare Brake Assist<sup>18</sup> for increased braking response and can even automatically begin braking under certain conditions.

### INTELLIGENT HIGH BEAMS

To help provide greater visibility for you as well as other drivers, available Intelligent High Beams<sup>19</sup> offer added illumination to help keep you focused on the road. When the road ahead is clear, the system defaults to high-beam mode, then temporarily switches to low beams when it detects the headlamps or taillamps of vehicles ahead.

### LANE DEPARTURE ALERT

This available system<sup>23</sup> utilizes a high-resolution camera to monitor visible lane markings and determine the vehicle's position within a lane. If an inadvertent lane departure, or potential departure due to swaying, is detected at speeds above 32 mph, the system attempts to alert the driver with audible and visual warnings and steering-wheel vibrations.

### INTUITIVE PARKING ASSIST

Available Intuitive Parking Assist<sup>24</sup> utilizes inconspicuous sensors integrated into the front and rear bumpers that are designed to detect surrounding objects. Using audible tones and an indicator on the multimedia display, the system can notify you of a detected object's location and proximity, helping with routine tasks like parallel parking.

GX shown in Silver Lining Metallic with Sport Design Package (left) // Options shown



## 360-DEGREE CONVENIENCE

### LEXUS ENFORM

Lexus Enform<sup>12</sup> elevates connected technology and provides concierge-level convenience. From emergency assistance and a live response center agent, to the ability to start your engine remotely<sup>25</sup> through your smartphone, smartwatch or using the Lexus skill on Amazon Alexa<sup>26</sup>-enabled devices, our premium suite of connected technology offers peace of mind with every drive.

available  
**17**  
 speaker audio system

### MARK LEVINSON® AUDIO

While most audio systems are adapted to and installed in a vehicle after it's produced, Mark Levinson<sup>14</sup> technicians work alongside Lexus engineers from the onset of the development process. That's why the GX features a dynamic sound stage uniquely fitted to the cabin. Sound this rich even allows listeners to experience the arrangement of individual instruments and performers, which more accurately expresses the artist's original intent. The available Mark Levinson® Premium Surround Sound Audio System<sup>14</sup> features 7.1-channel architecture, 17 speakers and 330 watts of maximum power. The resulting audio experience immerses the cabin in multidimensional sound that was once reserved for six-figure home audio systems.

### DELIVERY AND TECHNOLOGY SPECIALISTS

To help you get the most out of these and other features in your new Lexus, a Vehicle Delivery Specialist will walk you through nearly every setting and function you desire. And to answer questions that arise after delivery, a Vehicle Technology Specialist can offer expert guidance in person or without you ever leaving the driveway via camera-enabled apps like FaceTime.<sup>30</sup> Learn more about these complimentary services at [lexus.com/specialists](https://lexus.com/specialists).

### ADVANCED CLIMATE CONTROLS

The dual-zone climate control with smog sensor features individual settings to allow the driver and front passenger to adjust their preferred temperatures. Highly intelligent, the system even automatically switches into recirculation mode if it senses high levels of pollutants outside. The available three-zone automatic climate control with interior air filter, smog sensor and automatic recirculation mode helps to enhance peak comfort in any type of weather.

### VOICE COMMAND

Voice Command enables you to place compatible Bluetooth®-enabled<sup>27</sup> phone calls and operate audio functions using normal, everyday speech. When equipped with available Navigation,<sup>28</sup> the system also allows you to control climate and navigation functions.

### NAVIGATION SYSTEM

Use the high-resolution multimedia display or your voice to access the available Navigation System.<sup>28</sup> This system can map millions of points of interest across the country; offers up-to-date traffic and weather information,<sup>29</sup> 3D city views, and simulated views of approaching highway junctions; displays the current speed limit and can automatically display nearby gas stations if you begin to run low on fuel.



Options shown

## GX 460

301

HORSEPOWER<sup>4</sup>

4.6

LITER

V8

ENGINE

329

LB.-FT TORQUE<sup>4</sup>

4WD

STANDARD

6-SPEED

AUTOMATIC TRANSMISSION

6,500

LB TOWING CAPACITY<sup>2,3</sup>

15/18/16

CTY / HWY / CMB  
ESTIMATED MPG<sup>31</sup>

## DIMENSIONS

OVERALL LENGTH 192.1 IN / WHEELBASE 109.8 IN  
WIDTH 74.2 IN (MIRRORS FOLDED) / HEIGHT 74.2 IN (73.8 IN GX LUXURY)

## STANDARD ON EVERY GX

**GX 460** • 18-in six-spoke alloy wheels<sup>9</sup> / LED headlamps and daytime running lights / Power moonroof / Privacy glass / Running boards / SmartAccess<sup>32,33</sup> with push-button Start/Stop / NuLuxe<sup>31</sup> interior trim / 10-way power-adjustable front seats / Lexus Memory System / Reclining, sliding middle-row seats<sup>34</sup> with 40/20/40-split seatback / Fold-flat third-row seats / Dual-zone climate control with interior air filter / Lexus Multimedia System<sup>35</sup> with color display and nine speakers / Voice Command / Bluetooth<sup>27</sup> and USB<sup>36</sup> smartphone connectivity / Subscription-free Traffic and Weather updates via HD Radio<sup>TM29</sup> / Siri<sup>®</sup> Eyes Free<sup>37</sup> / Lexus Enform Safety Connect<sup>38</sup> and Service Connect<sup>39</sup> Complimentary for the first 10 years of ownership. / Lexus Enform Remote<sup>25</sup> app and Amazon Alexa<sup>26</sup> compatibility. Complimentary for the first year of ownership. / 10 standard airbags<sup>40</sup> / Backup camera<sup>41</sup> / Trailer Sway Control<sup>15</sup> / Complimentary maintenance services (please refer to the *Warranty and Services Guide* for details)

**GX 460 PREMIUM** • Includes all GX features and Navigation Package, plus: 18-in split-six-spoke alloy wheels<sup>9</sup> / LED foglamps / Rain-sensing wipers / Windshield wiper de-icer / NuLuxe<sup>11</sup> or available leather interior trim / Heated and ventilated front seats and heated second-row outboard seats / Three-zone automatic climate control with interior air filter, smog sensor and automatic recirculation mode / Intuitive Parking Assist<sup>24</sup>

**GX 460 LUXURY** • Includes all GX Premium features, plus: 18-in split-six-spoke alloy wheels<sup>9</sup> with Liquid Graphite finish / Power-folding, electrochromic (auto-dimming) outside mirrors / Headlamp washers / Adaptive Variable Suspension / Auto-leveling rear air suspension / Semi-aniline leather interior trim / Wood- and leather-trimmed heated steering wheel / Power-reclining and -folding third-row seats<sup>34</sup> / Cargo-area tonneau cover / Blind Spot Monitor<sup>20</sup> with Rear Cross-Traffic Alert<sup>21</sup>

## INDIVIDUAL OPTIONS

Headlamp washers (GX, GX Premium)

Wood- and leather-trimmed steering wheel and shift knob (GX Premium)

Heated and ventilated front seats (GX)

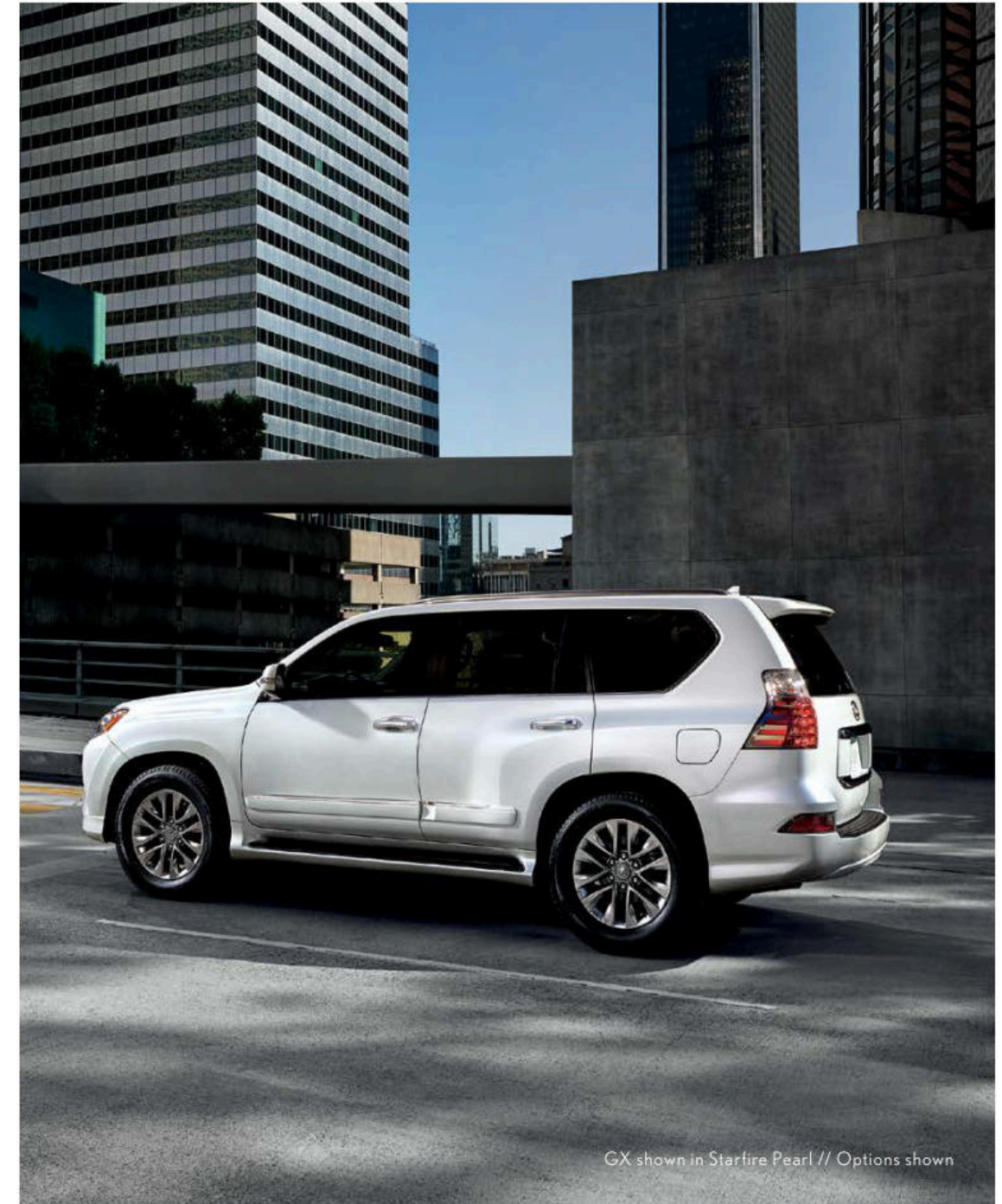
Second-row captain's chairs<sup>10</sup> (GX Premium)

Cargo-area tonneau cover (GX, GX Premium)

Blind Spot Monitor<sup>20</sup> with Rear Cross-Traffic Alert<sup>21</sup> and power-folding electrochromic (auto-dimming) exterior mirrors (GX, GX Premium)

Dual-screen DVD Rear-Seat Entertainment System<sup>13</sup> (GX Luxury)

Intuitive Parking Assist<sup>24</sup> (GX)



GX shown in Starfire Pearl // Options shown



"Lexus is Kelley Blue Book's 2018 Best Overall Luxury Brand."<sup>42</sup>

-KELLEY BLUE BOOK



## NAVIGATION PACKAGE

- A Navigation System<sup>28</sup> with Lexus Enform App Suite<sup>12</sup>

High-resolution color LCD display

Lexus Enform Destination Assist<sup>43</sup> Complimentary for the first year of ownership.

## MARK LEVINSON® PREMIUM SURROUND SOUND AUDIO PACKAGE (GX LUXURY)

Includes Navigation Package, plus:

Mark Levinson® 17-speaker, 330-watt Premium Surround Sound Audio System<sup>14</sup>

7.1-channel architecture

## DRIVER SUPPORT PACKAGE (GX LUXURY)

Includes Navigation and Mark Levinson®<sup>14</sup> Premium Surround Sound Audio Packages, plus:

Driver Attention Monitor<sup>17</sup>

Pre-Collision System<sup>16</sup> with High-Speed Dynamic Radar Cruise Control<sup>22</sup>

Lane Departure Alert<sup>23</sup>

- B Intelligent High Beams<sup>19</sup>

Wide-view Front and Side Monitor system<sup>15</sup>

Crawl Control<sup>6</sup>



## SPORT DESIGN PACKAGE (GX PREMIUM, GX LUXURY)

18-in split-six-spoke alloy wheels<sup>9</sup> with Gunmetal Metallic finish

Sport Design front fascia and lower grille surround

Sport Design side mirrors with chrome detail

Sport Design rear valance

- C Chrome exhaust tip

Scarlet taillamps

Second-row captain's chairs<sup>10</sup> (GX Luxury)

## ACCESSORIES

### TOW HITCH WITH BALL MOUNT<sup>44</sup>

Engineered to meet your vehicle's maximum tow rating.

### ROOF RACK CROSS BARS<sup>45,46</sup>

Lightweight, adjustable yet high-strength aluminum cross bars are corrosion- and fade-resistant and load-rated for carrying almost any size load up to 176 pounds (80 kg).

### ALL-WEATHER CARGO MAT

A lightweight, removable and waterproof mat with a multidimensional surface and custom channel design helps keep your cargo area clean and dry.

- C CHROME EXHAUST TIP

This polished stainless-steel tip is eye-catching and corrosion-resistant.

- D ALL-WEATHER FLOOR LINERS<sup>47</sup> WITH CARGO TRAY

Tube-style perimeter design helps provide optimal protection and an ideal fit.

### GLASS BREAKAGE SENSOR

Wrap your Lexus in a force field of security. The Lexus glass breakage sensor helps deter theft.

For a complete list of Genuine Lexus Accessories, visit [lexus.com/GX/accessories](http://lexus.com/GX/accessories). Options shown.



## WHEELS



18-in

Six-spoke alloy wheels<sup>9</sup>  
STANDARD GX



18-in

Split-six-spoke alloy wheels<sup>9</sup>  
STANDARD GX PREMIUM



18-in

Split-six-spoke alloy wheels<sup>9</sup>  
with Liquid Graphite finish  
STANDARD GX LUXURY



18-in

Split-six-spoke alloy wheels<sup>9</sup>  
with Gunmetal Metallic finish  
STANDARD GX  
SPORT DESIGN PACKAGE



18-in

F SPORT 12-spoke alloy wheels<sup>9,48</sup>  
AVAILABLE



GX shown in Nebula Gray Pearl // Options shown

# COLOR, MATERIAL & FINISH



BLACK NULUXE™	●	■
BLACK LEATHER		■▲
SEPIA NULUXE™	●	■
SEPIA LEATHER		■▲
ECRU LEATHER		■▲

## INTERIOR & TRIM

GX ●  
GX Premium ■  
GX Luxury ▲



●■	●■	●■	●■		●■	●■
■▲	■▲	■▲	■▲		■▲	■▲
●■	●■	●■	●■	●■	●■	●■
■▲	■▲	■▲	■▲	■▲	■▲	■▲
■▲	■▲	■▲	■▲	■▲	■▲	■▲

## EXTERIOR

## GX 460

# 301

HORSEPOWER<sup>1</sup>

# 4.6

LITER

# V8

ENGINE

# 329

LB-FT TORQUE<sup>1</sup>

# 4WD

STANDARD

# 6-SPEED

AUTOMATIC  
TRANSMISSION

# 6,500

LB TOWING CAPACITY<sup>2,3</sup>

# 15/18/16

CTY / HWY / CMB  
ESTIMATED MPG<sup>31</sup>

**WARRANTY** Four-year/50,000-mile Lexus Limited Warranty. Six-year/70,000-mile Powertrain Warranty. Six-year/unlimited-mileage Corrosion Perforation Warranty. All warranties with zero deductible. See the GX Warranty and Services Guide at your Lexus dealer for details.

**DISCLOSURES** 1. The GX 460 is designed to meet most off-road driving requirements. Off-roading is inherently dangerous and may result in bodily harm or vehicle damage. Lexus encourages responsible operation to help protect you, your vehicle and the environment. Seatbelts should be worn at all times. Do not allow passengers to ride in cargo area. Tow hitch receivers/ball mount kits are not intended to provide crash protection. 2. Please consult your Lexus dealer or Owner's Manual for towing and load specifications. 3. Before towing, confirm your vehicle and trailer are compatible, hooked up properly and you have any necessary additional equipment. If gross trailer weight is above 5,000 lb (2,268 kg), it is necessary to use a weight-distributing hitch with sufficient capacity. Do not exceed any Weight Ratings and follow all instructions and cautions from your trailer-hitch manufacturer and vehicle Owner's Manual. The maximum amount you can tow depends on the total weight of any cargo, occupants and available equipment. 4. Ratings achieved using the required premium unleaded gasoline with an octane rating of 91 or higher. If premium fuel is not used, performance will decrease. 5. Trailer Sway Control (TSC) is an electronic system designed to help the driver maintain vehicle control under adverse conditions. It is not a substitute for safe driving practices. Factors including speed, grade, surface conditions and driver input can all affect whether TSC will be effective in preventing a loss of control. See Owner's Manual for additional limitations and details. 6. Crawl Controls designed for driving on difficult terrain at low speeds. It assists the driver by controlling acceleration and braking, allowing the driver to focus on steering. The GX 460 is designed to meet off-road driving requirements, but off-roading is inherently dangerous. Always wear seatbelts. See Owner's Manual for additional limitations and details. 7. TORSEN® is a registered trademark of Zexel Torsen, Inc. 8. Downhill Assist Control is designed to help the driver maintain vehicle control and speed on steep downhill descents. Hill-start Assist Control is designed to help minimize backward rolling on steep ascents. Neither system is a substitute for safe driving judgment and practices. Factors including speed, grade, surface conditions and driver input can all affect whether DAC and HAC will be effective in preventing a loss of control. See Owner's Manual for additional limitations and details. 9. 18-in performance tires are expected to experience greater tire wear than conventional tires. Tire life may be substantially less than 15,000 miles, depending upon driving conditions. 10. Available second-row captain's chairs reduce vehicle seating capacity to a maximum of six passengers. 11. NuLuxe is a registered trademark of Toyota Motor Sales, U.S.A., Inc. 12. Be sure to obey traffic regulations and maintain awareness of road and traffic conditions at all times. Apps/services vary by phone/carrier; functionality depends on many factors. Select apps use large amounts of data; you are responsible for charges. Apps and services subject to change at any time without notice. See [lexus.com/enform](http://lexus.com/enform) for details. 13. A single-disc DVD player is included. A separate DVD player or game system utilizing the center console's video/audio inputs is required in order to use the split-screen function of the dual-screen system. 14. Mark Levinson is a registered trademark of Harman International Industries, Inc. 15. The Wide-view Front and Side Monitor system does not provide a comprehensive view of the front and side areas of the vehicle. You should also look around outside your vehicle and use your mirrors to confirm clearance. Environmental factors may limit effectiveness and view may become obscured. See Owner's Manual for additional limitations and details. 16. The Pre-Collision System is designed to help reduce the crash speed and damage in certain frontal collisions only. It is not a collision-avoidance system and is not a substitute for safe and attentive driving. System effectiveness is dependent on many factors including road, weather and vehicle conditions. See Owner's Manual for additional limitations and details. 17. The Driver Attention Monitor is designed to alert the driver if a potential hazard is detected ahead and the driver's face appears to be turned away. It is not a collision-avoidance system and is not a substitute for safe and attentive driving. System effectiveness depends on many factors, such as speed, driver input, light and road conditions. See Owner's Manual for details. 18. Brake Assist is designed to help the driver take full advantage of the benefits of ABS. It is not a substitute for safe driving practices. Braking effectiveness also depends on proper vehicle maintenance, tire and road conditions. See Owner's Manual for additional limitations and details. 19. Intelligent High Beams operate at speeds above 25 mph. Factors such as a dirty windshield, weather, lighting and terrain limit effectiveness, requiring the driver to manually operate the high beams. See Owner's Manual for additional limitations and details. 20. Do not rely exclusively on the Blind Spot Monitor. Always look over your shoulder and use your turn signal. There are limitations to the function, detection and range of the monitor. See Owner's Manual for additional limitations and details. 21. Do not rely exclusively on the Rear Cross-Traffic Alert system. Always look over your shoulder and use your mirrors to confirm rear clearance. There are limitations to the function, detection and range of the system. See Owner's Manual for additional limitations and details. 22. Dynamic Radar Cruise Control is designed to assist the driver and is not a substitute for safe and attentive driving practices. System effectiveness is dependent on many factors, including road, weather and traffic conditions. See Owner's Manual for additional limitations and details. 23. Lane Departure Alert is designed to read visible lane markers under certain conditions and provide visual and audible alerts when lane departure is detected. It is not a collision-avoidance system or a substitute for safe and attentive driving. Effectiveness is dependent on many factors including road, weather and vehicle conditions. See Owner's Manual for additional limitations and details. 24. Intuitive Parking Assist (IPA) is designed to assist drivers in avoiding potential collisions at speeds of 9 mph or less. Certain vehicle and environmental factors, including an object's speed, shape, size and composition, may affect the system's effectiveness. Always look around outside the vehicle and use mirrors to confirm clearance. See Owner's Manual for additional limitations and details. 25. Use only if aware of circumstances surrounding vehicle and it is legal and safe to do so (e.g., do not remotely start engine if vehicle is in an enclosed space or vehicle is occupied by a child). Remote Connect is dependent upon an operative telematics device, a cellular connection, navigation map data and GPS satellite signal reception, and other factors outside of Lexus' control, which can limit the ability or functionality of the system. Registration and app download are required. See usage precautions and service limitations in Owner's Manual. To learn about Lexus Enform's data collection, use, sharing and retention, please visit <https://www.lexus.com/privacy/vts/>. The Remote Connect trial period is at no extra cost and begins on the original date of purchase or lease of a new vehicle. After the trial period expires, enrollment in a paid subscription is required to access the service. Terms and conditions apply. 26. Amazon, Alexa and all related logos are trademarks of Amazon.com, Inc. or its affiliates. Certain Alexa functionality is dependent on smart home technology. Not all Amazon Alexa skills are available for in-vehicle use. Always drive safely and obey traffic laws. Apps, prices and services vary by phone carrier and are subject to change at any time without notice. Subject to smartphone connectivity and capability. Data charges may apply. 27. Concentrating on the road should always be your first priority while driving. Do not use the hands-free phone system if it will distract you. The Bluetooth word mark and logos are registered trademarks owned by Bluetooth SIG, Inc. and any use of such marks by Lexus is under license. A compatible Bluetooth-enabled phone must first be paired. Phone performance depends on software, coverage and carrier. 28. Be sure to obey traffic regulations and maintain awareness of road and traffic conditions at all times. Availability and accuracy of the information provided by the Navigation System is dependent upon many factors. Use common sense when relying on information provided. Services and programming subject to change. Services not available in every city or roadway. Updates may be available from your dealer at an additional cost. See Owner's Manual for details. 29. Be sure to obey traffic regulations and maintain awareness of road and traffic conditions at all times. HD Radio Technology manufactured under license from iBiquity Digital Corporation U.S. and Foreign Patents. HD Radio and the HD, HD Radio, and "Arc" logos are proprietary trademarks of iBiquity Digital Corp. 30. FaceTime is a registered trademark of Apple Inc. All rights reserved. Always drive safely and obey traffic laws. Apps, prices and services vary by phone carrier and are subject to change at any time without notice. Subject to smartphone connectivity and capability. Data charges may apply. 31. 2019 Lexus GX 460 preliminary 15/city, 18/hwy, 16/comb mpg estimates determined by Lexus. EPA estimates not available at time of publishing. Actual mileage will vary. 32. The SmartAccess system may interfere with some pacemakers or cardiac defibrillators. If you have one of these medical devices, please talk to your doctor to see if you should deactivate this system. 33. The engine immobilizer is a state-of-the-art anti-theft system. When you insert your key into the ignition switch or bring a Smart Key fob into the vehicle, the key transmits an electronic code to the vehicle. The engine will only start if the code in the transponder chip inside the key/fob matches the code in the vehicle's immobilizer. Because the transponder chip is embedded in the key/fob, it can be costly to replace. If you lose a key or fob, your Lexus dealer can help. Alternatively, you can find a qualified independent locksmith to perform high-security key services by consulting your local Yellow Pages or by contacting [www.aloa.org](http://www.aloa.org). 34. Do not allow passengers to sit in a seat that has been fully or severely reclined while driving. This feature is intended for use only when the vehicle is parked. While the vehicle is being driven, all vehicle occupants should have the seatback upright, sit well back in the seat and properly wear the seatbelts provided. In the event of a collision, the more the seat is reclined, the greater the risk of death or personal injury. See Owner's Manual for details. 35. Be sure to obey traffic regulations and maintain awareness of road and traffic conditions at all times. 36. May not be compatible with all mobile phones, MP3/WMA players and like models. 37. Always drive safely, obey traffic laws and focus on the road while driving. Siri is available on select iPhone/iPad models and requires Internet access. Siri is not available in all languages or all areas and features vary by area. Some Siri functionality and commands are not accessible in the vehicle. Data charges may apply. See Apple.com and phone carrier for details. Siri is a registered trademark of Apple Inc. 38. Lexus Enform services are dependent upon an operative telematics device, a cellular connection, navigation map data and GPS satellite signal reception, and other factors outside of Lexus' control, which can limit the ability to reach the response center or receive emergency support or otherwise limit the functionality of the system. Terms and conditions of subscriber agreement apply. To learn about Lexus Enform's data collection, use, sharing and retention, please visit <https://www.lexus.com/privacy/vts/>. Stolen vehicle police report required to use Stolen Vehicle Locator. The Safety Connect trial period is at no extra cost and begins on the original date of purchase or lease of a new vehicle. After the trial period expires, enrollment in paid subscription is required to access the service. Terms and conditions apply. 39. Information provided is based on the last time data was collected from the vehicle and may not be up to date. Service Connect is dependent upon an operative telematics device, a cellular connection, navigation map data and GPS satellite signal reception, and other factors outside of Lexus' control, which can limit the ability or functionality of the system. To learn about Lexus Enform's data collection, use, sharing and retention, please visit <https://www.lexus.com/privacy/vts/>. The Service Connect trial period is at no extra cost and begins on the original date of purchase or lease of a new vehicle. After the respective trial period expires, enrollment in paid subscription is required to access the service. Terms and conditions apply. 40. All the airbag systems are Supplemental Restraint Systems. All airbags (if installed) are designed to inflate only under certain conditions and in certain types of severe collisions. To decrease the risk of injury from an inflating airbag, always wear seatbelts and sit upright in the middle of the seat as far back as possible. Do not put objects in front of an airbag or around the seatback. Do not use a rearward-facing child seat in any front passenger seat. See Owner's Manual for additional limitations and details. 41. The backup camera does not provide a comprehensive view of the rear area of the vehicle. You should also look around outside your vehicle and use your mirrors to confirm rearward clearance. Environmental conditions may limit effectiveness and view may become obscured. See Owner's Manual for additional limitations and details. 42. 2018 Kelley Blue Book Brand Image Awards are based on the Brand Watch™ study from Kelley Blue Book Strategic Insights. For more information, visit [www.kbb.com](http://www.kbb.com). Kelley Blue Book is a registered trademark of Kelley Blue Book Co., Inc. 43. Destination Assist is dependent upon an operative telematics device, a cellular connection, navigation map data and GPS satellite signal reception, and other factors outside of Lexus' control, which can limit the ability or functionality of the system. Use common sense when relying on this information. To learn about Lexus Enform's data collection, use, sharing and retention, please visit <https://www.lexus.com/privacy/vts/>. See Owner's Manual for additional details. The Destination Assist trial period is at no extra cost and begins on the original date of purchase or lease of a new vehicle. After the trial period expires, enrollment in a paid subscription is required to access the service. Terms and conditions of subscription service agreement apply. 44. Ball mount, trailer ball and tow hitch sold separately. Please consult your Lexus dealer or Owner's Manual for towing and load specifications. Some models require factory tow package option. Before towing, confirm your vehicle and trailer are compatible, hooked up and loaded properly and that you have any necessary additional equipment. Do not exceed any Weight Ratings and follow all instructions in your Owner's Manual. The maximum you can tow depends on the total weight of any cargo, occupants and available equipment. 45. Accessory roof rack cross bars with rails not recommended for luggage. 46. Roof rack capacity is 176 lb (80 kg). See Owner's Manual for details. 47. Carpet and all-weather floor liners/mats are model-specific with model names. Floor liners/mats are designed for use in a specific model and model year vehicle and SHOULD NOT be used in any other vehicle. To avoid potential interference with pedal operation, each liner/mat must be secured with its fasteners. Do not install a floor liner/mat on top of an existing floor liner/mat. 48. SPORT Accessories are warranted for 12 months from the date of installation or for the balance of the new-car/CPO warranty in force at the date of installation by a Lexus dealer, whichever is greater. These warranties do not cover maintenance services such as replacement of brake pads/linings, clutch linings, noise, vibration, cosmetic conditions and other deterioration caused by normal wear and tear. See dealer for details.

Lexus strives to build vehicles to match customer interest, and thus they typically are built with popular options and option packages. Not all options/packages are available separately, and some may not be available in all regions of the country. See [lexus.com](http://lexus.com) for information about options/packages commonly available in your area. If you would prefer a vehicle without any or with different options, contact your dealer to check for current availability or the possibility of placing a special order. Specifications, features, equipment, technical data, performance figures, options, and color and trim are based upon information available at time of printing, are subject to change without notice, and are for mainland U.S.A. vehicles only. Some vehicles shown with available equipment. See your Lexus dealer for details. Lexus reminds you to wear seatbelts, secure children in rear seat, obey all traffic laws and drive responsibly. For more information, call 800-USA-LEXUS (872-5398) or visit [lexus.com](http://lexus.com). To learn more about your financing options, contact your Lexus dealer or call Lexus Financial Services at 800-874-7050.

