

RX

—

LEXUS 2019

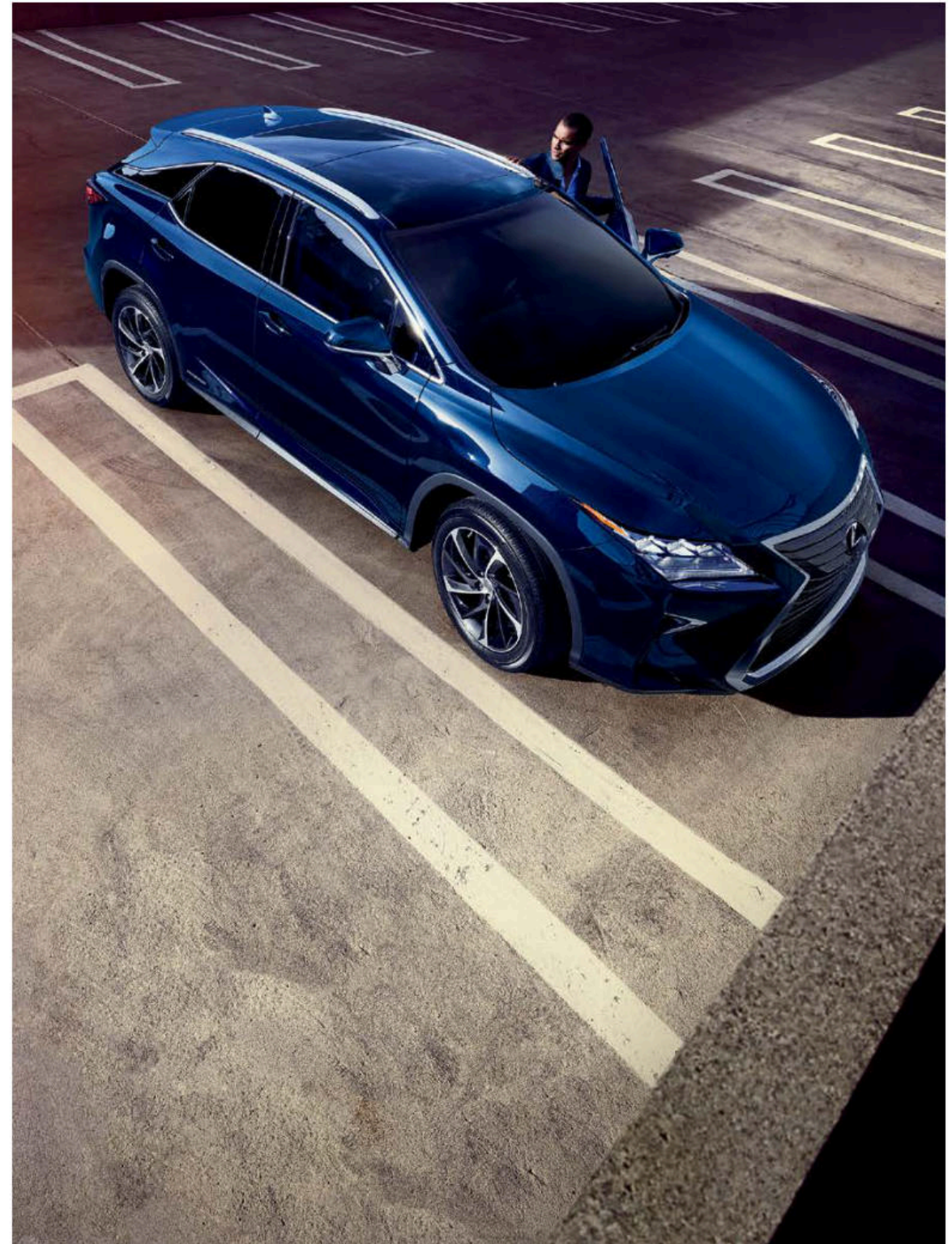


Expressive craftsmanship.
Driver-inspired technology.
Uncompromising versatility.

Because shattering expectations means nothing
if it doesn't lead to the experience
of something greater.

The 2019 Lexus RX.

—
Experience Amazing



RXh shown in Nightfall Mica // Options shown



RX 450h

Offering the best of all worlds, the 2019 RX Hybrid pairs a potent V6 engine with powerful electric motors for an impressive 308 total system horsepower¹ and a 30-MPG combined estimate² along with all-wheel drive performance.

RX F SPORT MODELS

Take the RX 350 and RX 450h to the next level with an Adaptive Variable Suspension and bold interior and exterior styling, including sport seats with enhanced bolsters, a lower front spoiler and 20-inch alloy wheels³ with Dark Graphite finish.

RX 350

The 2019 RX 350 features a 295-horsepower, 3.5-liter Atkinson-cycle V6 engine with eight-speed automatic transmission and a suite of premium technology, including standard Lexus Safety System+⁴, an available 12.3-inch multimedia display with full-screen map, and an available color Head-Up Display. Front-wheel drive or available all-wheel drive.

RX 350L / RX 450hL

Now, enjoy the RX in a sleek and stylish three-row crossover. Both models offer ample cargo space⁵ and third-row comforts including power-folding seats and dedicated climate control. Seats six with available captain's chairs or seven with second-row bench seating⁶. Front-wheel drive (standard on RX 350L) or all-wheel drive (standard on RX 450hL, available on RX 350L).

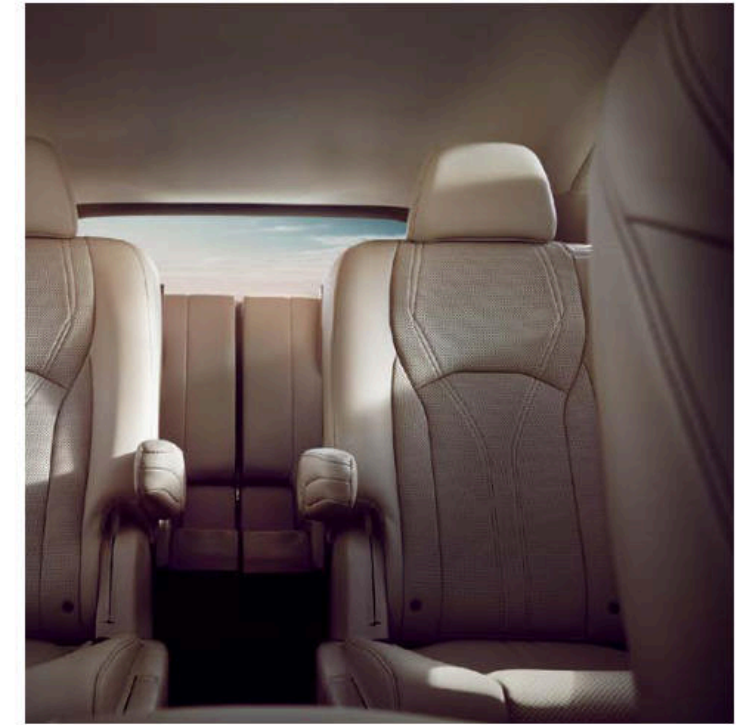
RXh shown in Nightfall Mica (left), RX F SPORT shown in Ultra White (center), RX L shown in Silver Lining Metallic (right) // Options shown



RXL shown in Atomic Silver // Options shown

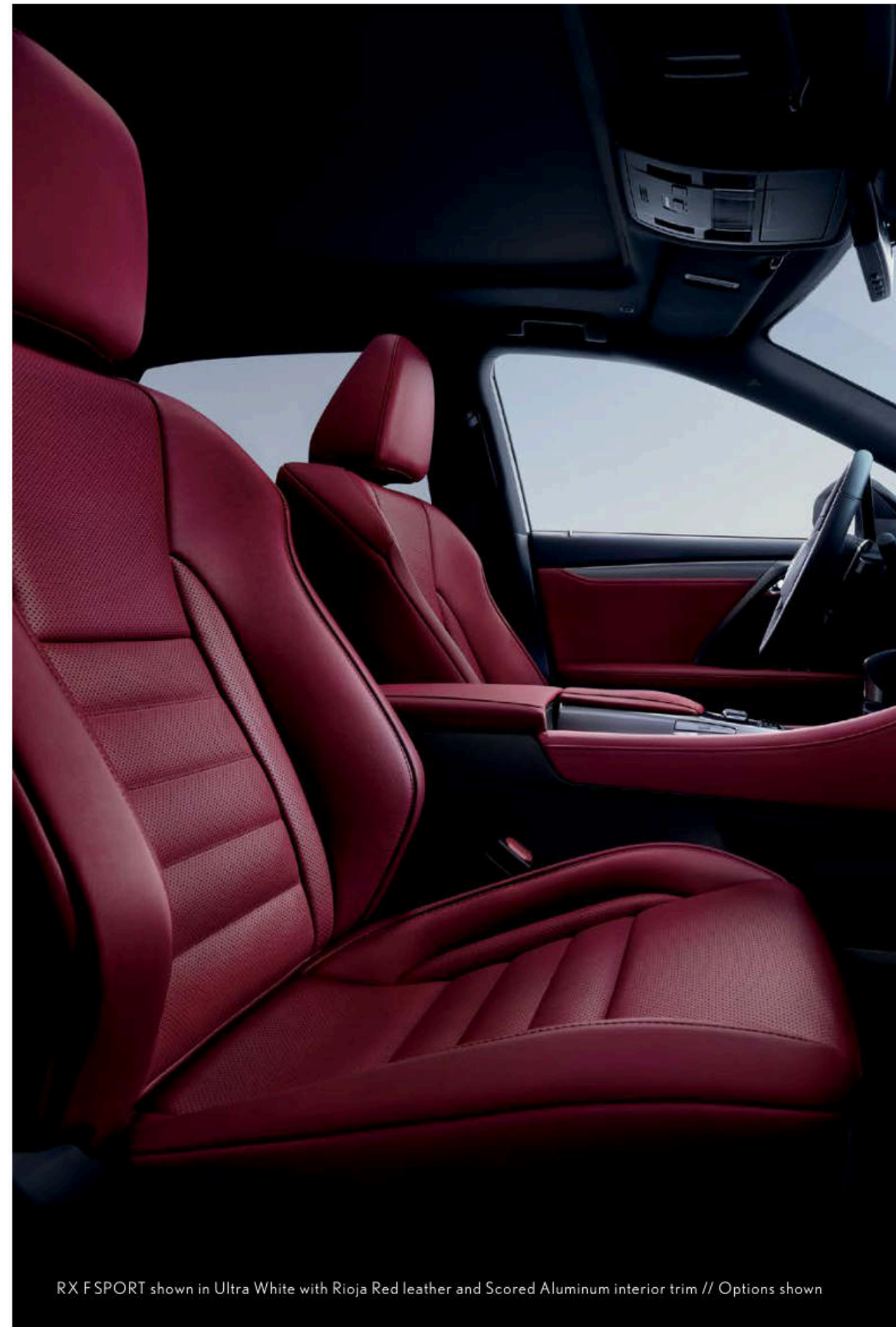


RXh shown in Atomic Silver // Options shown





RX shown with Noble Brown leather and Gray Sapele wood with Aluminum interior trim // Options shown



RX F SPORT shown in Ultra White with Rioja Red leather and Scored Aluminum interior trim // Options shown



RX F SPORT shown in Caviar



With a distinct floating roofline and expressive design, the RX makes a statement even before you arrive. Available Premium Triple-Beam LED headlamps feature a three-projector design with an eye-catching L shape. Plus, the three-row RX features uncompromised styling with added passenger capacity.

DESIGN BEYOND LUXURY

—
Razor-sharp character lines, unmistakable LED illumination and bold, unapologetic accents raise the bar on crossover style.



RX shown in Nightfall Mica



RX shown in Eminent White Pearl (left), RXL shown in Atomic Silver (right) // Options shown

PUSHING THE LIMITS OF SPACE AND STYLE

*Discover refined styling, comfort
and a larger interior inside the
seven-passenger RX 350L.*

Same powerful stance. Same signature floating roofline. One noteworthy addition: a power-folding third row. From its bold grille to its wraparound LED taillamps, the five-passenger RX has always challenged conventional design. The RXL continues that same tradition while seamlessly incorporating class-leading cargo space^{5,7} and seating for up to seven in the RX 350L and up to six in the RX 450hL.⁶



With room for up to seven passengers in the RX 350L and six in the RX 450hL,⁶ you can take on all of life's curves. Whether it's taking a couple more kids to practice, driving your colleagues to lunch, or making room for your latest antiquing find, the three-row RXL has you covered.

POWER-FOLDING SEATS

For easy access, simply tilt and slide the second-row seat and step into the inviting third row. Plus, both the RX 350L and RX 450hL feature power-folding third-row seats with 50/50 split for added versatility.

CLASS-LEADING CARGO SPACE^{5,7}

Even with the third row up, the RX 350L and RX 450hL both have more cargo depth than our competitors.^{5,7} So, you'll have plenty of room for the weekend's purchases—and then some. For added convenience, a Touch-Free Power Rear Door⁸ is also offered. Simply hold your hand or elbow near the badge to open.

RXL shown in Atomic Silver // Options shown

THREE ROWS. ENDLESS ADVENTURES.

Embrace the unexpected with class-leading cargo space^{5,7} and power-folding third-row seats.





SEVEN-PASSENGER SEATING

With available six- or seven-passenger seating,⁶ the RXL offers the ultimate luxury: flexibility.

Why take two cars when you can take one? The RX 350L and RX 450hL are designed to ensure everyone can come along for the ride. And with supple leather-trimmed seats, plenty of legroom and dedicated third-row climate control, the longer the road trip, the better.

CAPTAIN'S CHAIRS

Ready to take second-row comfort to first-class standards? Now you can with luxurious available captain's chairs.⁶ This configuration seats six and creates an aisle that accentuates the inviting feel of the cabin. Meanwhile, a tilt-and-slide seat feature makes access to the third row even more convenient.

RXL shown with Parchment leather and Gray Sapele wood with Aluminum interior trim and captain's chairs⁶ // Options shown

INTERIOR DESIGN

Created with attention to even the smallest details, the RX is filled with an abundance of distinctive extras.

AMBIENT LED ILLUMINATION

Adding intrigue to the interior, available ambient LED lighting brightens and dims in a coordinated series to welcome the driver into the RX. Soft lighting also illuminates the area surrounding the vehicle the moment you approach, for added visibility and security.

HEATED AND VENTILATED SEATING

Taking luxury further, the available heated and ventilated front seats offer separate heaters and fans in the seat cushions to provide optimum comfort, regardless of the weather. Heated second-row outboard seats are also available in all RX models, including the three-row RX.

MULTI-ZONE CLIMATE CONTROL

Customize the climate around you. Individual settings allow the driver and front passenger to adjust their preferred temperatures. Plus, the RX 350L and RX 450hL feature dedicated climate control for passengers in the third row. To help ensure the cabin stays fresh, an available smog-sensing climate-control system automatically switches into recirculation mode if it senses high levels of pollutants outside.



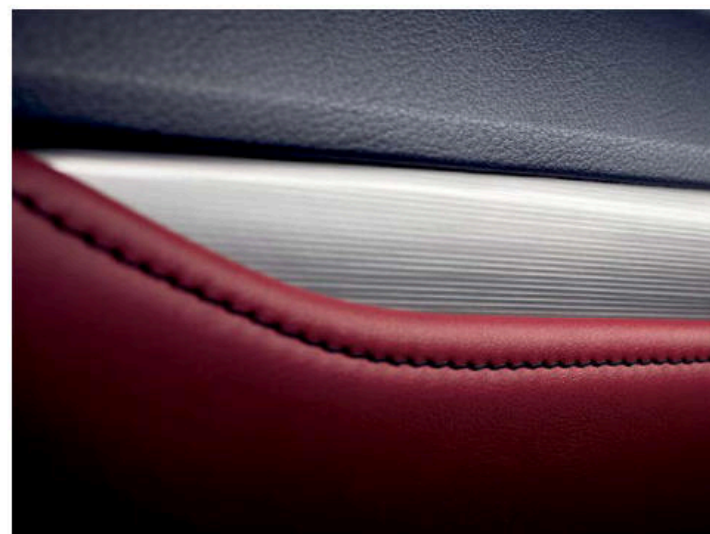
RX F SPORT shown with Stratus Gray leather and Scored Aluminum interior trim // Options shown



CUTTING-EDGE CRAFTSMANSHIP

A renowned eye for detail, precision-crafted Yamaha® wood trim and hand-selected leather trim come together to create our most refined RX yet.

Art meets technology as handcrafted trim undergoes a meticulous process by expert *takumi* craftsmen. The available Yamaha Gray Sapele wood is created by the same artisans responsible for producing some of the world's finest musical instruments. This artful trim marries the natural expression of fine wood with the clean sophistication of brushed aluminum as the opposing materials are layered upon each other. Laser technology then engraves the wood surface to reveal the metallic lines underneath. An available semi-aniline perforated leather-trimmed interior elevates every drive, while convenient power-folding and -reclining^o second-row seats offer easy versatility in the RX 350 and RX 450h. In addition, power-folding seats are standard in the third row of the RX 350L and RX 450hL.





Options shown



With an available large 12.3-inch high-resolution split-screen multimedia display and the Lexus Enform Remote¹⁰ mobile app, you can easily see and do more. While an available Touch-Free Power Rear Door⁸ harnesses intuitive technology for the height of convenience—a hand or elbow placed near the sensor enables it to open.

TECHNOLOGY BEYOND TODAY

Designed around the driver and for the future, the RX offers advanced technology and innovative safety equipment that push the entire industry forward.



PEACE OF MIND, STANDARD

Presenting Lexus Safety System+, an integrated suite of the most advanced active safety equipment ever offered on the RX.⁴

PRE-COLLISION SYSTEM WITH PEDESTRIAN DETECTION

This system¹¹ is engineered to help detect a vehicle or a pedestrian¹² in the path of your Lexus under certain conditions. Should it detect a potential frontal collision, it's designed to automatically prepare Brake Assist¹³ for increased brake force and, in some cases, can even automatically brake the vehicle to a stop.

LANE DEPARTURE ALERT WITH LANE KEEP ASSIST

This system¹⁴ utilizes a camera to monitor visible lane markings. If an inadvertent or potential lane departure is detected, it's designed to warn you and can take slight corrective measures. And, if Dynamic Radar Cruise Control¹⁵ is engaged, the system can even help you remain in the center of the visibly marked lane, helping to prevent drifting before it occurs.

ALL-SPEED DYNAMIC RADAR CRUISE CONTROL

This system¹⁵ uses radar and camera technology to help you maintain a preset speed and following distance from the vehicle ahead. Whether at highway speeds or in stop-and-go traffic, the system is designed to detect if you get closer than the preset distance and automatically slow your vehicle—even to a complete stop. If driving at highway speeds and the road ahead clears, your Lexus returns to its preset speed.

INTELLIGENT HIGH BEAMS

To help provide greater visibility for you as well as other drivers, Intelligent High Beams¹⁶ offer added illumination to help keep you focused on the road. When the road ahead is clear, the system defaults to high-beam mode, then temporarily switches to low beams when it detects the headlamps or taillamps of vehicles ahead.



LEXUS SAFETY SYSTEM +

RX shown in Silver Lining Metallic // Options shown



COMMAND CENTER

Experience connected technology at your fingertips and the forefront of driver convenience.

NAVIGATION SYSTEM

Use the high-resolution multimedia display or your voice to access the available Navigation System.¹⁷ This system can map millions of points of interest across the country and can display information in English, French or Spanish. And, in addition to offering up-to-date traffic and weather information,¹⁸ 3D city views, and simulated views of approaching highway junctions, it displays the current speed limit and can automatically display nearby gas stations if you begin to run low on fuel.

PANORAMIC VIEW MONITOR

The RX offers passionate design with peace of mind, as seen in the available Panoramic View Monitor.²¹ Four high-resolution cameras mounted on the front, sides and rear of the vehicle give drivers a bird's-eye view of the near environment. Moving View and See-Through View options create a composite image of the vehicle's surroundings as on-screen guides assist with parking and tight maneuvering.

REMOTE TOUCH

Available Remote Touch²² allows you to easily move through logical menus of the vehicle's features. Located centrally for your comfort and convenience, buttons on either side are accessible to both the driver and front passenger.

VOICE COMMAND

Voice Command enables you to place compatible Bluetooth[®]-enabled²³ phone calls and operate climate, audio and navigation functions using normal, everyday speech. If you say "It's too hot in here," for example, the climate control will automatically lower the temperature by four degrees.

12.3-in

available split-screen multimedia display with full-screen map view

LEXUS ENFORM

Lexus Enform¹⁹ elevates connected technology and provides concierge-level convenience. From emergency assistance and a live response center agent, to the ability to start your engine remotely through your smartphone, smartwatch or using the Lexus skill on Amazon Alexa²⁰-enabled devices, our premium suite of connected technology offers peace of mind with every drive.

DELIVERY AND TECHNOLOGY SPECIALISTS

To help you get the most out of these and other features in your new Lexus, a Vehicle Delivery Specialist will walk you through nearly every setting and function you desire. And to answer questions that arise after delivery, a Vehicle Technology Specialist can offer expert guidance in person or without you ever leaving the driveway via camera-enabled apps like FaceTime.²⁴ Learn more about these complimentary services at lexus.com/specialists.





MARK LEVINSON® PREMIUM SURROUND SOUND AUDIO SYSTEM

The available Mark Levinson® Premium Surround Sound Audio System²⁵ features patented, proprietary Clari-Fi^{®25} technology that restores audio quality from compressed music, resulting in crisp, clear, dynamic sound from any source. This, combined with technology designed to create an expansive "sweet spot" of audio, envelops every passenger in three-dimensional sound that rivals the finest home audio systems.

15
speakers

835
watts



RX shown with Black leather and Gray Sapele wood with Aluminum interior trim // Options shown

PERFORMANCE BEYOND EXPECTATIONS

From the high-performance and fuel-efficient hybrid to the available F SPORT, the RX turns heads and overturns convention.



Engineered to tap into the power of the robust chassis, the optimized suspension delivers precise handling with a strikingly smooth ride. When combined with an array of performance features including a transmission so intelligent it can increase torque at lower speeds for improved acceleration, and an available Adaptive Variable Suspension that can monitor and adjust the shock absorber settings depending on conditions, the result is an SUV that does more than run the show. It stops it.



RXh F SPORT shown in Ultra White // Options shown



RX shown in Silver Lining Metallic // Options shown

POWER ON DEMAND

RX 350 AND RX 350L

Experience luxury that roars. A 3.5-liter V6 engine with direct and port fuel injection pairs exhilarating power with efficient fuel economy. Combined with a quick-shifting eight-speed transmission, and delivering 295 (RX 350) and 290 horsepower (RX 350L), both models offer dynamic performance at every curve.

For even greater control, an innovative dual Variable Valve Timing with intelligence (VVT-i) system offers precise engine performance as it reduces emissions and enhances fuel efficiency. VVT-i monitors the engine's speed and load, increasing torque at lower speeds for improved acceleration, and boosts performance at higher speeds by adjusting intake and exhaust valve timing.

TWO POWER SOURCES. UNEQUALED PERFORMANCE.

Our most powerful RX pairs a potent 3.5-liter engine with dynamic electric motors.

Take everything you love about the RX. Then give it more performance. And more efficiency. That's the philosophy behind the RX 450h and RX 450hL, which boast a potent 3.5-liter V6 engine—paired with powerful electric motors and an Electronically controlled Continuously Variable Transmission—for a combined 308 total system horsepower,¹ a 30-MPG combined estimate,² instant torque delivery and AWD performance. All without requiring a charge. Both models also feature a Super Ultra-Low Emission Vehicle (SULEV) rating.

Craving more of an edge? The RX 450h F SPORT adds bold styling, leather interior trim and an Adaptive Variable Suspension that will take performance even further.



RXh shown in Eminent White Pearl // Options shown



ALL-WHEEL DRIVE

Stay in control with available Active Torque Control all-wheel drive. This intelligent system monitors road conditions in real time, automatically shifting engine power between front and rear axles, while 100% of the power goes to the front wheels during normal driving conditions for improved efficiency. And standard on the RX 450h and RX 450hL, electronic all-wheel drive features a rear electric motor that delivers instantaneous torque to the rear wheels automatically when you need it, with no friction loss.

RX F SPORT AWD shown in Matador Red Mica // Options shown



In addition to more aggressive styling inside and out, the RX F SPORT's exclusive features deliver even more control and exhilarating intensity. An Adaptive Variable Suspension lets you customize the shock absorber settings for improved ride comfort or reduced body lean as you enter and exit turns. The powerful V6 emits a throaty engine note when accelerating. And, putting thrilling performance right at your fingertips, paddle shifters offer lightning-fast upshifts and heart-racing split-second downshifts.

EXCLUSIVE PERFORMANCE DRIVE MODES

To help provide the highest level of responsiveness, the F SPORT comes equipped with exclusive drive modes. Sport S and S+ modes enhance steering and suspension, while Custom mode allows you to personalize everything from road feel to responsiveness. Further enhancing the excitement, an exclusive LFA-inspired gauge cluster provides real-time information such as G-force metrics, power distribution and more.

RX F SPORT shown in Nebula Gray Pearl // Options shown

F SPORT PERFORMANCE

Specially tuned by the same team behind the iconic LFA supercar, the RX F SPORT is engineered to spark attention and adrenaline.



F SPORT STYLING

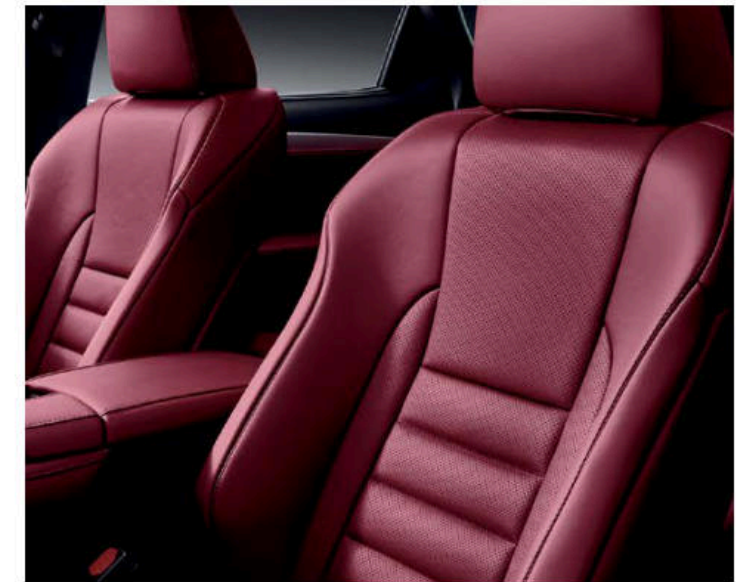
The bold F SPORT perspective is obvious throughout the driver-centric interior. In addition to exclusive race-inspired instrumentation and bold aluminum accents, you'll find performance upgrades, including bolstered sport seats, a black headliner, a perforated leather-trimmed sport steering wheel and shift knob, plus aluminum pedals and more.



RX F SPORT shown with Rioja Red leather and Scored Aluminum interior trim // Options shown

F SPORT BOLSTERED SEATS

Signature race-inspired F SPORT bolstered seats provide the ideal posture, control and visibility for enhanced driving performance. Featuring a unique foam-injected construction and designed to contour to the needs of the driver, their low position helps place the driver's hip point as close as possible to the car's center of gravity, for a more dynamic driving experience.



20-INCH DARK GRAPHITE ALLOY WHEELS

Punctuating the attitude of the aggressive exterior, exclusive F SPORT 20-inch Dark Graphite alloy wheels³ enhance the vehicle's low, powerful stance.



**RX 350 / RX 350L /
RX 350 F SPORT**

295 290
HORSEPOWER HORSEPOWER
(RX 350L)

V6
3.5-LITER ATKINSON-CYCLE
ENGINE

FWD
STANDARD

8-SPEED
ELECTRONICALLY CONTROLLED
TRANSMISSION (RX) WITH PADDLE
SHIFTERS (RX F SPORT)

7.7 7.9
0-60 MPH 0-60 MPH (SEC)²⁶
(SEC)²⁶ (RX 350L)

22/27/23
CTY / HWY / CMB
ESTIMATED MPG²

19/26/23
CTY / HWY / CMB
ESTIMATED MPG² (RX 350L)

**RX 350 AWD / RX 350L AWD /
RX 350 F SPORT AWD**

295 290
HORSEPOWER HORSEPOWER
(RX 350L AWD)

V6
3.5-LITER ATKINSON-CYCLE
ENGINE

AWD
STANDARD

8-SPEED
ELECTRONICALLY CONTROLLED
TRANSMISSION (RX) WITH PADDLE
SHIFTERS (RX F SPORT)

7.9 8.1
0-60 MPH 0-60 MPH (SEC)²⁶
(SEC)²⁶ (RX 350L AWD)

19/26/22
CTY / HWY / CMB
ESTIMATED MPG²

18/25/21
CTY / HWY / CMB
ESTIMATED MPG² (RX 350L AWD)

**RX 450h / RX 450hL /
RX 450h F SPORT**

308
TOTAL SYSTEM HORSEPOWER¹

V6
3.5-LITER ENGINE + LEXUS
HYBRID DRIVE

AWD
STANDARD

ECVT
ELECTRONICALLY CONTROLLED
CONTINUOUSLY VARIABLE
TRANSMISSION (RXh, RXL HYBRID)
WITH PADDLE SHIFTERS (RXh F SPORT)

7.9 8.1
0-60 MPH 0-60 MPH (SEC)^{1,26}
(SEC)^{1,26} (RX 450hL)

31/28/30
CTY / HWY / CMB
ESTIMATED MPG²

31/28/30
CTY / HWY / CMB
ESTIMATED MPG² (RX 450hL)

DIMENSIONS

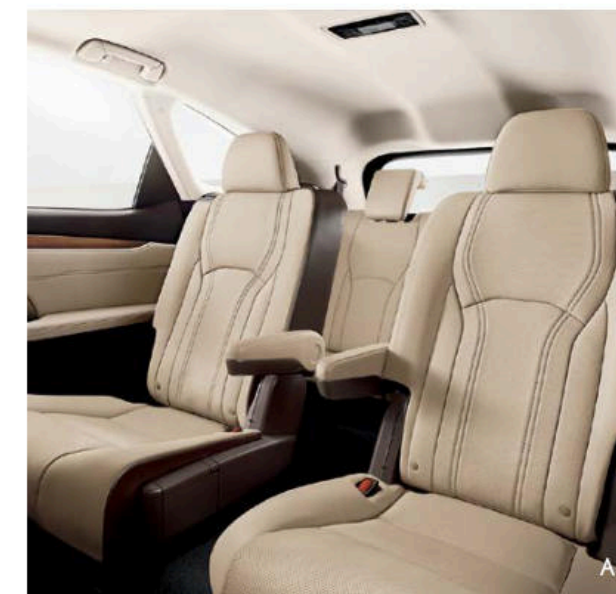
OVERALL LENGTH 192.5 IN (RX, RXh), 196.9 IN (RXL, RXL HYBRID) / WHEELBASE 109.8 IN
WIDTH 74.6 IN (MIRRORS FOLDED) / HEIGHT 67.3 IN (RXL), 67.7 IN (RX, RXh, RXL HYBRID)

STANDARD FEATURES ON EVERY RX

Bi-LED headlamps, LED foglamps and daytime running lights
Auto-dimming inside mirror and power-adjustable, heated
outside mirrors
Rain-sensing windshield wipers
Power rear door
SmartAccess^{27,28} with push-button Start/Stop
Perforated NuLuxe^{®29} interior trim (RX, RXh)
Power tilt-and-telescopic steering column
Leather-trimmed steering wheel and shift knob
Power-adjustable front seats
40/20/40-split folding, reclining⁹ second-row seats
Dual-zone automatic climate control with interior air filter
(RX, RXh)
Drive Mode Select
Lexus Multimedia System²² with color display and compatible
Scout[®] GPS Link^{19,30} with TurnStream[™] mode. Complimentary
through 2023.
Subscription-free Traffic and Weather updates via HD Radio^{™18}
Voice Command with Bluetooth²³ and USB³¹ smartphone
connectivity
Siri[®] Eyes Free³²
Lexus Enform App Suite¹⁹
Lexus Enform Safety Connect³³ and Service Connect³⁴
Complimentary for the first 10 years of ownership.
Lexus Safety System+⁴ (Pre-Collision System¹¹ with Pedestrian
Detection,¹² All-Speed Dynamic Radar Cruise Control,¹⁵
Intelligent High Beams,¹⁶ and Lane Departure Alert¹⁴ with
Lane Keep Assist)
10 airbags³⁵
Backup camera³⁶
Complimentary maintenance services (please refer to the
Warranty and Services Guide for details)

ADDITIONAL STANDARD FEATURES (RXL)

Power-folding and -reclining⁹ 50/50-split third-row seats
A Second-row captain's chairs⁶ (RXL Hybrid)
Second-row armrest storage compartment with two
USB ports³⁰ (RXL)
Leather interior trim
Three-zone climate control
Lexus Memory System
Power-folding, auto-dimming outside mirrors
Aluminum roof rails^{37,38}



INDIVIDUAL OPTIONS

Premium Triple-Beam LED headlamps with washers, dynamic
auto-leveling, LED turn signals, cornering lamps and taillamps
Adaptive Front Lighting System³⁹ (RX, RXh)
Heated leather-trimmed steering wheel
Heated wood- and leather-trimmed steering wheel
Heated front seats (RX, RXh)
Heated and ventilated front seats
Heated and ventilated front and heated second-row outboard
seats (RXL, RXL Hybrid)
Second-row captain's chairs⁶ (RXL)
Power-folding, 60/40-split, heated second-row outboard seats
with heated and ventilated front seats (RX, RXh)
Power moonroof and aluminum roof rails^{37,38} (RX, RXh)
Panorama glass roof and aluminum roof rails^{37,38} (RX, RXh)
Touch-Free Power Rear Door⁸
Blind Spot Monitor⁴⁰ with Intuitive Parking Assist⁴¹ with Auto
Braking and Rear Cross-Traffic Alert⁴² and power-folding
outside mirrors
Blind Spot Monitor⁴⁰ with Intuitive Parking Assist⁴¹ and Rear
Cross-Traffic Alert⁴² power-folding outside mirrors and Panoramic
View Monitor²¹
Head-Up Display



*"Lexus is Kelley Blue Book's 2018 Best Overall Luxury Brand."*⁴³
-KELLEY BLUE BOOK



PREMIUM PACKAGE (RX)

- Leather interior trim
- Espresso Walnut, Matte Bamboo or Matte Linear Dark Mocha wood interior trim
- A Rear armrest storage compartment
- Lexus Memory System for driver's seat, outside mirrors and steering wheel
- Power-folding, auto-dimming outside mirrors
- Power tilt-and-slide moonroof

PREMIUM PACKAGE (RXL)

- Espresso Walnut, Matte Bamboo or Matte Linear Dark Mocha wood interior trim
- Power moonroof

LUXURY PACKAGE

- Includes Premium Package, plus:
- Heated wood- and leather-trimmed steering wheel
- Power cushion extender for driver's and front passenger's seats
- Semi-aniline leather interior trim
- Gray Sapele wood with Aluminum interior trim
- Manual rear side-door sunshades
- LED ambient interior illumination
- LED-illuminated door sills
- 20-in split-five-spoke alloy wheels³ with Superchrome and machined finish

NAVIGATION PACKAGE

- B Navigation System¹⁷ with 12.3-in high-resolution split-screen multimedia display
- Lexus Enform Destination Assist¹⁹ Complimentary for the first year of ownership.
- Remote Touch²²
- Lexus Enform Remote¹⁰ app and Amazon Alexa²⁰ compatibility. Complimentary for the first year of ownership.
- 12-speaker Lexus Premium Sound System
- Dual-zone climate control with smog-sensing automatic recirculation mode



NAVIGATION / MARK LEVINSON® PACKAGE

- Includes Navigation Package, plus:
- Mark Levinson® 15-speaker, 835-watt Premium Surround Sound Audio System²⁵

COLD WEATHER PACKAGE

- Windshield wiper de-icer
- Auto-leveling headlamps and headlamp washers
- Fast-response interior heater

TOWING PREP PACKAGE (RX, RXh, RXL)

- Heavy-duty radiator and cooling fan
- Engine and transmission oil coolers

F SPORT (RX, RXh)

- Includes Premium Package, plus:
- F SPORT exterior styling including exterior badging, mesh grille, front spoiler and rear valance
- Performance-inspired instrumentation
- Heated and ventilated F SPORT front seats with enhanced bolsters
- Perforated leather-trimmed F SPORT steering wheel and shift knob
- Paddle shifters
- Scored Aluminum interior trim
- Aluminum pedals and door-sill scuff plates
- Black headliner
- LED ambient interior illumination
- Cold-air intake with sound generator (RX 350)
- Sport-tuned Adaptive Variable Suspension with Sport S+ mode, and sport-tuned Electronic Power Steering
- Vehicle Dynamics Integrated Management⁴⁴
- 20-in split-10-spoke alloy wheels³ with Dark Graphite finish

ACCESSORIES

- C ALL-WEATHER CARGO MAT
A lightweight, removable and waterproof mat with a multi-dimensional surface and custom channel design helps keep your cargo area clean and dry.

ILLUMINATED DOOR SILLS

Illuminated door sills include a protective stainless-steel overlay.

RUNNING BOARDS

Provide easier access to the cabin and roof rack^{38,45} while enhancing style and functionality.

ROOF RACK CROSS BARS

Lightweight, adjustable yet high-strength aluminum cross bars are corrosion- and fade-resistant and load-rated for carrying almost any size load up to 165 pounds (75 kg).^{38,45}

TOW HITCH RECEIVER⁴⁶

Engineered to meet your vehicle's maximum tow rating.

For a complete list of Genuine Lexus Accessories, visit lexus.com/RX/accessories. Options shown.



WHEELS



18-in

Seven-spoke alloy wheels³
STANDARD RX, RXh, RXL, RXL Hybrid



20-in

Split-five-spoke alloy wheels³ with
Dark Silver and machined finish
AVAILABLE RX, RXh, RXL, RXL Hybrid



20-in

Split-10-spoke alloy wheels³
with Dark Graphite finish
STANDARD RX F SPORT,
RXh F SPORT



20-in

Split-five-spoke alloy wheels³ with
Superchrome and machined finish
and interchangeable colored inserts
STANDARD LUXURY PACKAGE



RXh shown in Nightfall Mica // Options shown

COLOR, MATERIAL & FINISH



STRATUS GRAY NULUXE ⁴⁵	●									
STRATUS GRAY LEATHER	■	●■			●■				▲	
BLACK NULUXE ⁴⁵	●									
BLACK LEATHER	■	●■			●■				▲	
PARCHMENT LEATHER	■		●■		●■					
NOBLE BROWN LEATHER	■			●■	●■					
RIOJA RED LEATHER										▲

INTERIOR & TRIM

RX, RXh ●
 RXL, RXL Hybrid ■
 RX/RXh FSPORT ▲



	●■	●■	●■	●■	●■	●■				●■
▲	●■	●■▲	●■▲	●■▲	●■▲	●■▲			●■▲	▲
▲	●■	●■▲	●■▲	●■▲	●■▲	●■▲	●■	●■	●■▲	●■▲
	●■	●■	●■	●■	●■	●■	●■	●■	●■	●■
▲	●■	●■	●■	●■	●■	●■	●■	●■	●■	●■

EXTERIOR

*Also available in semi-aniline leather
 †Only available on FSPORT models
 For configuration details, visit lexus.com/RXbuild

**RX 350 / RX 350L /
RX 350 F SPORT**

295

**HORSEPOWER
(RX 350 /
RX 350 F SPORT)**

290

**HORSEPOWER
(RX 350L)**

V6

**3.5-LITER
ATKINSON-CYCLE
ENGINE**

**RX 450h / RX 450hL /
RX 450h F SPORT**

308

**TOTAL SYSTEM
HORSEPOWER¹**

V6

**3.5-LITER ENGINE +
LEXUS HYBRID DRIVE**

RX 350L

7

**PASSENGER
SEATING**

WARRANTY Four-year/50,000-mile Lexus Limited Warranty. Six-year/70,000-mile Powertrain Warranty. Six-year/unlimited-mileage Corrosion Perforation Warranty. Eight-year/100,000-mile Hybrid System Warranty. All warranties with zero deductible. See the *RX Warranty and Services Guide* at your Lexus dealer for details.

DISCLOSURES 1. Ratings achieved using the required premium unleaded gasoline with an octane rating of 91 or higher. If premium fuel is not used, performance will decrease. 2. Preliminary mileage estimates determined by Lexus. EPA mileage estimates not available at time of publishing. Actual mileage will vary. 3. 18- or 20-in performance tires are expected to experience greater tire wear than conventional tires. Tire life may be substantially less than mileage expectancy of 15,000 miles, depending upon driving conditions. 4. LSS+ drivers are responsible for their own safe driving. Always pay attention to your surroundings and drive safely. System effectiveness is dependent on many factors including road, weather and vehicle conditions. See Owner's Manual for additional limitations and details. 5. Cargo and load capacity limited by weight and distribution. 6. Seven-passenger second-row bench seating standard in the RX 350L, and six-passenger seating with second-row captain's chairs available in the RX 350L and standard in the RX 450hL. 7. 2019 RX L vs. 2018/2019 competitors. Information from manufacturers' websites as of 5/21/2018. 8. The touchless sensor can be affected by water, weather, dirt and other conditions. It may not operate properly, or may operate unintentionally, under certain conditions. See Owner's Manual for details. 9. Do not allow passengers to sit in a seat that has been fully or severely reclined while driving. This feature is intended for use only when the vehicle is parked. While the vehicle is being driven, all vehicle occupants should have the seatback upright, sit well back in the seat and properly wear the seatbelts provided. In the event of a collision, the more the seat is reclined, the greater the risk of death or personal injury. See Owner's Manual for details. 10. Use only if aware of circumstances surrounding vehicle and it is legal and safe to do so (e.g., do not remotely start engine if vehicle is in an enclosed space or vehicle is occupied by a child). Remote Connect is dependent upon an operative telematics device, a cellular connection, navigation map data and GPS satellite signal reception, and other factors outside of Lexus' control, which can limit the ability or functionality of the system. Registration and app download are required. See usage precautions and service limitations in Owner's Manual. To learn about Lexus Enform's data collection, use, sharing and retention, please visit <https://www.lexus.com/privacypvts/>. The Remote Connect trial period is at no extra cost and begins on the original date of purchase or lease of a new vehicle. After the trial period expires, enrollment in a paid subscription is required to access the service. Terms and conditions apply. 11. The LSS+ Pre-Collision System is designed to help avoid or reduce the crash speed and damage in certain frontal collisions only. It is not a substitute for safe and attentive driving. System effectiveness is dependent on many factors including road, weather and vehicle conditions. See Owner's Manual for additional limitations and details. 12. The Pedestrian Detection System is designed to detect a pedestrian ahead of the vehicle, determine if impact is imminent and help reduce impact speed. It is not a substitute for safe and attentive driving. System effectiveness depends on many factors, such as speed, size and position of pedestrians, and weather, light and road conditions. See Owner's Manual for additional limitations and details. 13. Brake Assist is designed to help the driver take full advantage of the benefits of ABS. It is not a substitute for safe driving practices. Braking effectiveness also depends on proper vehicle maintenance, tire and road conditions. See Owner's Manual for additional limitations and details. 14. Lane Departure Alert with Lane Keep Assist is designed to read visible lane markers under certain conditions and provide visual and audible alerts when lane departure is detected. It is not a collision-avoidance system or a substitute for safe and attentive driving. Effectiveness is dependent on many factors including road, weather and vehicle conditions. See Owner's Manual for additional limitations and details. 15. Dynamic Radar Cruise Control is designed to assist the driver and is not a substitute for safe and attentive driving practices. System effectiveness is dependent on many factors, including road, weather and traffic conditions. See Owner's Manual for additional limitations and details. 16. Intelligent High Beams operate at speeds above 25 mph. Factors such as a dirty windshield, weather, lighting and terrain limit effectiveness, requiring the driver to manually operate the high beams. See Owner's Manual for additional limitations and details. 17. Be sure to obey traffic regulations and maintain awareness of road and traffic conditions at all times. Availability and accuracy of the information provided by the Navigation System is dependent upon many factors. Use common sense when relying on information provided. Services & programming subject to change. Services not available in every city or roadway. Updates may be available from your dealer at an additional cost. See Owner's Manual for details. 18. Be sure to obey traffic regulations and maintain awareness of road and traffic conditions at all times. HD Radio Technology manufactured under license from iBiquity Digital Corporation U.S. and Foreign Patents. HD Radio and the HD, HD Radio, and "Arc" logos are proprietary trademarks of iBiquity Digital Corp. 19. Destination Assist is dependent upon an operative telematics device, a cellular connection, navigation map data and GPS satellite signal reception, and other factors outside of Lexus' control, which can limit the ability or functionality of the system. Use common sense when relying on this information. To learn about Lexus Enform's data collection, use, sharing and retention, please visit <https://www.lexus.com/privacypvts/>. See Owner's Manual for additional details. The Destination Assist trial period is at no extra cost and begins on the original date of purchase or lease of a new vehicle. After the trial period expires, enrollment in a paid subscription is required to access the service. 20. Amazon, Alexa and all related logos are trademarks of Amazon.com, Inc. or its affiliates. Certain Alexa functionality is dependent on smart home technology. Not all Amazon Alexa skills are available for in-vehicle use. Always drive safely and obey traffic laws. Apps, prices and services vary by phone carrier and are subject to change at any time without notice. Subject to smartphone connectivity and capability. Data charges may apply. 21. The Panoramic View Monitor does not provide a comprehensive view of the area surrounding the vehicle. You should also look around outside your vehicle and use your mirrors to confirm surrounding clearance. Environmental conditions may limit effectiveness and view may become obscured. See Owner's Manual for additional limitations and details. 22. Be sure to obey traffic regulations and maintain awareness of road and traffic conditions at all times. 23. Concentrating on the road should always be your first priority while driving. Do not use the hands-free phone system if it will distract you. The Bluetooth word mark and logos are registered trademarks owned by Bluetooth SIG, Inc. and any use of such marks by Lexus is under license. A compatible Bluetooth-enabled phone must first be paired. Phone performance depends on software, coverage and carrier. 24. FaceTime is a registered trademark of Apple Inc. All rights reserved. Always drive safely and obey traffic laws. Apps, prices and services vary by phone carrier and are subject to change at any time without notice. Subject to smartphone connectivity and capability. Data charges may apply. 25. Mark Levinson and Clari-Fi are registered trademarks of Harman International Industries, Inc. 26. Performance figures are for comparison only and were obtained with prototype vehicles by professional drivers using special safety equipment and procedures. Do not attempt. 27. The SmartAccess system may interfere with some pacemakers or cardiac defibrillators. If you have one of these medical devices, please talk to your doctor to see if you should deactivate this system. 28. The engine immobilizer is a state-of-the-art anti-theft system. When you insert your key into the ignition switch or bring a SmartKey fob into the vehicle, the key transmits an electronic code to the vehicle. The engine will only start if the code in the transponder chip inside the key/fob matches the code in the vehicle's immobilizer. Because the transponder chip is embedded in the key/fob, it can be costly to replace. If you lose a key or fob, your Lexus dealer can help. Alternatively, you can find a qualified independent locksmith to perform high-security key services by consulting your local Yellow Pages or by contacting www.aloa.org. 29. NuLuxe is a registered trademark of Toyota Motor Sales, U.S.A., Inc. 30. The Scout GPS Link app is compatible with select vehicle models. Availability and accuracy of the information provided by Scout GPS Link is subject to change at any time without notice and is dependent upon many factors, including smartphone connectivity, capability and cellular reception. Always use safe driving practices and follow all traffic rules. Data charges may apply. Scout and Telenav are registered trademarks of Telenav, Inc. 31. May not be compatible with all mobile phones, MP3/WMA players and like models. 32. Always drive safely, obey traffic laws and focus on the road while driving. Siri is available on select iPhone/iPad models and requires Internet access. Siri is not available in all languages or all areas and features vary by area. Some Siri functionality and commands are not accessible in the vehicle. Data charges may apply. See apple.com and phone carrier for details. Siri is a registered trademark of Apple Inc. 33. Lexus Enform services are dependent upon an operative telematics device, a cellular connection, navigation map data and GPS satellite signal reception, and other factors outside of Lexus' control, which can limit the ability to reach the response center or receive emergency support or otherwise limit the functionality of the system. Terms and conditions of subscriber agreement apply. To learn about Lexus Enform's data collection, use, sharing and retention, please visit <https://www.lexus.com/privacypvts/>. Stolen vehicle police report required to use Stolen Vehicle Locator. The Safety Connect trial period is at no extra cost and begins on the original date of purchase or lease of a new vehicle. After the trial period expires, enrollment in paid subscription is required to access the service. Terms and conditions apply. 34. Information provided is based on the last time data was collected from the vehicle and may not be up to date. Service Connect is dependent upon an operative telematics device, a cellular connection, navigation map data and GPS satellite signal reception, and other factors outside of Lexus' control, which can limit the ability or functionality of the system. To learn about Lexus Enform's data collection, use, sharing and retention, please visit <https://www.lexus.com/privacypvts/>. The Service Connect trial period is at no extra cost and begins on the original date of purchase or lease of a new vehicle. After the respective trial period expires, enrollment in paid subscription is required to access the service. Terms and conditions apply. 35. All the airbag systems are Supplemental Restraint Systems. All airbags (if installed) are designed to inflate only under certain conditions and in certain types of severe collisions. To decrease the risk of injury from an inflating airbag, always wear seatbelts and sit upright in the middle of the seat as far back as possible. Do not put objects in front of an airbag or around the seatback. Do not use a rearward-facing child seat in any front passenger seat. See Owner's Manual for additional limitations and details. 36. The backup camera does not provide a comprehensive view of the rear area of the vehicle. You should also look around outside your vehicle and use your mirrors to confirm rearward clearance. Environmental conditions may limit effectiveness and view may become obscured. See Owner's Manual for additional limitations and details. 37. Roof rails not recommended for luggage. 38. Roof rack capacity is 165 lb (75 kg). See Owner's Manual for details. 39. The Adaptive Front Lighting System helps improve vision at night. Situations such as a dirty windshield, rapidly changing light conditions or hilly terrain will limit effectiveness, requiring the driver to manually turn off the system. See Owner's Manual for details. 40. Do not rely exclusively on the Blind Spot Monitor. Always look over your shoulder and use your turn signal. There are limitations to the function, detection and range of the monitor. See Owner's Manual for additional limitations and details. 41. Intuitive Parking Assist (IPA) is designed to assist drivers in avoiding potential collisions at speeds of 9 mph or less. Certain vehicle and environmental factors, including an object's speed, shape, size and composition, may affect the system's effectiveness. Always look around outside the vehicle and use mirrors to confirm clearance. See Owner's Manual for additional limitations and details. 42. Do not rely exclusively on the Rear Cross-Traffic Alert system. Always look over your shoulder and use your mirrors to confirm rear clearance. There are limitations to the function, detection and range of the system. See Owner's Manual for additional limitations and details. 43. 2018 Kelley Blue Book Brand Image Awards are based on the Brand Watch™ study from Kelley Blue Book Strategic Insights. For more information, visit www.kbb.com. Kelley Blue Book is a registered trademark of Kelley Blue Book Co., Inc. 44. Vehicle Dynamics Integrated Management (VDIM) is an electronic system designed to help the driver maintain vehicle control under adverse conditions. It is not a substitute for safe and attentive driving practices. Factors including speed, road conditions, weather and driver steering input can all affective in preventing a loss of control. See Owner's Manual for additional limitations and details. 45. Accessory roof rack cross bars not recommended for luggage. 46. Ball mount, trailer ball and tow hitch sold separately. Please consult your Lexus dealer or Owner's Manual for towing and load specifications. Some models require factory tow package option. Before towing, confirm your vehicle and trailer are compatible, hooked up and loaded properly and that you have any necessary additional equipment. Do not exceed any Weight Ratings and follow all instructions in your Owner's Manual. The maximum you can tow depends on the total weight of any cargo, occupants and available equipment.

Lexus strives to build vehicles to match customer interest, and thus they typically are built with popular options and option packages. Not all options/packages are available separately, and some may not be available in all regions of the country. See lexus.com for information about options/packages commonly available in your area. If you would prefer a vehicle without any or with different options, contact your dealer to check for current availability or the possibility of placing a special order. Specifications, features, equipment, technical data, performance figures, options, and color and trim are based upon information available at time of printing, are subject to change without notice, and are for mainland U.S.A. vehicles only. Some vehicles shown with available equipment. See your Lexus dealer for details. Lexus reminds you to wear seatbelts, secure children in rear seat, obey all traffic laws and drive responsibly. For more information, call 800-USA-LEXUS (872-5398) or visit lexus.com. To learn more about your financing options, contact your Lexus dealer or call Lexus Financial Services at 800-874-7050.

