

2019 CONTINENTAL





# THE LUXURY EXPERIENCE REDEFINED

Time is the ultimate luxury, which is why Lincoln is dedicated to helping you spend more of yours the way you prefer. As a Continental driver, you'll be able to access remote vehicle features, contact a Lincoln Concierge, and find and pre-pay for parking in select cities, easily with the Lincoln Way™ app on your mobile device.<sup>1</sup> With complimentary Lincoln Pickup & Delivery,<sup>2</sup> you can continue seamlessly through your day while we service your vehicle.<sup>2</sup> Plus, Lincoln is working with CLEAR<sup>®</sup> to help you soar through lines at the airport.<sup>3</sup> It's all part of an exclusive collection of services we call the Lincoln Way – benefits designed to help uncomplicate your life and make each day more effortless.

Warmly greeting you with a series of illuminating gestures, Continental senses your approach. Dynamic signature lighting<sup>4</sup> in its adaptive headlamps flows gracefully outward, while luminous welcome mats quietly appear. Grasp the beautifully backlit handle of your door, and it opens with ease. Close it, and the autofold sideview mirrors<sup>4</sup> unfold to your personalized settings. The 2019 Continental embodies your elegantly refined approach to life – making it the ideal companion for the ride.

<sup>1</sup>Lincoln Way app is available via download and compatible with select smartphone platforms. Learn more at [lincolnway.com](http://lincolnway.com). Message and data rates may apply. <sup>2</sup>Lincoln Pickup & Delivery is valid for owners of 2017 or newer model-year Lincoln vehicles. Service available for retail and warranty repairs. Mileage limitations may apply. See dealer for details. <sup>3</sup>CLEAR is currently available to U.S. citizens and legal permanent residents with valid photo I.D. Program eligibility for new retail purchases of 2018 and newer model-year Lincoln vehicles (12 months on Lincoln Black Label models; 6 months on all other Lincoln models). Full CLEAR enrollment, including biometrics, required to be completed within 120 days of vehicle delivery. <sup>4</sup>Available feature.

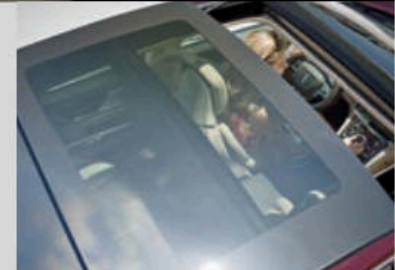




# CRAFTED FOR YOUR JOURNEY

Designed with an emphasis on providing a serene experience, the beautifully detailed interior environment of Continental is crafted to be physically comforting, visually soothing and peacefully quiet. Relax into the Perfect Position front seats<sup>1</sup> trimmed in Bridge of Weir Deepsoft™ leather<sup>1</sup> created exclusively for Lincoln by the historic Scottish tannery. Inspired by private aircrafts, Perfect Position seats<sup>1</sup> feature a patented comfort-carrier design that flexes around you in a personalized embrace. Each thigh cushion extends and adjusts independently to help support both of your legs, the one at rest and the one engaging the pedals as you drive. Heated and ventilated settings<sup>1</sup> help optimize your comfort in any climate, while the Active Motion® massage functionality<sup>1</sup> helps reduce muscle fatigue in your upper legs and lower back. Arrive feeling revitalized and refreshed in Continental.

While the dual-panel moonroof<sup>1</sup> invites all to bask in the sun, the vivid head-up display<sup>1,2</sup> uses Digital Light Projection technology to help the driver stay informed – even when wearing polarized sunglasses and in bright lighting conditions. Customize the display by adjusting its position and level of brightness, and selecting the details you want to see. Outside, chrome flows seamlessly over the E-Latch door handles, creating a graceful line that quietly contributes to your serenity. Nestle in as your power-cinch<sup>1</sup> doors finish closing themselves, and enjoy every mile of your journey within these spectacular surroundings.



<sup>1</sup>Available feature. <sup>2</sup>Don't drive while distracted. See owner's manual for details and system limitations.





You'll delight in the luxurious comfort and harmonious design Continental offers to all. In addition to the generous leg room featured in both rows, you'll find an exceptional collection of amenities in the Rear-Seat Package. It lets you care for your travel companions in back by offering them the power to control their environment.

First, they'll want to customize the fit of their heated and ventilated outboard seats with Active Motion® massage functionality, plus power-adjustable lumbar support and power recline. Next, they can select a temperature and adjust the power rear-window sunshade. Sunshades can also be extended over both rear-door windows.

All of this can be done while enjoying beautiful views framed by the dual-panel moonroof with power sunshade, and increased airflow from the extra rear registers. With this package, the person riding behind the front-passenger seat even has the ability to move it forward when it's not occupied – creating more room to relax in the back.

# PAMPERING EXTENDS TO YOUR COMPANIONS





# SPIRITED IN ITS RESPONSE

Empowering you to move with purpose, Continental is driven by the smoothly calibrated V6 engine of your choice. Twin-turbocharging and direct-injection technology help the 3.0-liter and 2.7-liter engines<sup>1</sup> generate virtually instantaneous on-demand power. With the capable 3.7-liter, you get twin independent variable camshaft timing that precisely controls the operation of intake and exhaust valves to help optimize fuel combustion.

Every engine is paired with an engaging SelectShift<sup>®</sup> automatic transmission that puts the control of a manual at your fingertips. Just tap the steering wheel-mounted paddle shifters to change gears when you want, or leave it to Continental. Intelligent all-wheel drive (AWD)<sup>1</sup> is available with any engine to provide you with a dynamic driving experience – rain or shine.

Imagine yourself gliding effortlessly along – at peace with your surroundings. Lincoln Drive Control featuring Adaptive Suspension gets you there by helping to isolate your Continental from road imperfections. To personalize your ride, explore each of the 3 drive modes – Comfort, Normal and Sport. With any of them, Electric Power-Assisted Steering (EPAS) provides steering response and feedback that helps you feel confident behind the wheel.

When you equip Continental with the 400-horsepower<sup>2</sup> Twin-Turbocharged 3.0-liter V6 engine<sup>1</sup> and Intelligent all-wheel drive (AWD),<sup>1</sup> you'll also benefit from the addition of Dynamic Torque Vectoring.<sup>3</sup> This technology works in tandem with AWD to enhance performance by sending up to 100% of the available rear-axle torque to the outside rear wheel while cornering. The result is smooth and seamless – the driving experience of your dreams.

**Twin-Turbocharged 3.0-liter V6<sup>1</sup>**

**400 hp<sup>2</sup>/400 lb.-ft. torque<sup>2</sup>**

**Twin-Turbocharged 2.7-liter V6<sup>1</sup>**

**335 hp<sup>2</sup>/380 lb.-ft. torque<sup>2</sup>**

**3.7-liter Ti-VCT<sup>3</sup> V6**

**305 hp<sup>2</sup>/280 lb.-ft. torque**

<sup>1</sup>Available feature. <sup>2</sup>Horsepower and torque ratings achieved with 93-octane fuel. <sup>3</sup>Remember that even advanced technology cannot overcome the laws of physics. It's always possible to lose control of a vehicle due to inappropriate driver input for the conditions.





LINCOLN  
SYNC® 3

#### VOICE-ACTIVATED SIMPLICITY

SYNC 3 makes it easy to listen to your favorite music, handle phone calls and more, while you're on the go.<sup>1</sup> It all works through simple voice commands and the controls on your steering wheel. The system also includes Apple CarPlay™ and Android Auto™ compatibility.<sup>2</sup>

SYNC 3 AppLink®<sup>3</sup> gives you voice control of compatible mobile apps on your connected phone, too. You can use it with the Waze™ community-based traffic and navigation app<sup>3</sup> on your iPhone® Plus, Continental now works with Amazon Alexa in two convenient ways. While inside the vehicle, you can ask Alexa to play music, listen to audiobooks, check the weather, control smart home devices and much more, through the Lincoln+Alexa app.<sup>4</sup> While at home, you can use the Lincoln Way Alexa Skill<sup>4</sup> on your Alexa enabled device to remotely start your vehicle and climate control system, lock and unlock the doors, and more.

#### (((SiriusXM)))

SiriusXM® gives you music, sports, comedy, news and more – in your Continental and on the go with a 6-month All Access trial subscription.<sup>5</sup> Plus, you'll enjoy a 6-year prepaid subscription<sup>5</sup> to SiriusXM Traffic and Travel Link® services – the longest of any automobile manufacturer<sup>6</sup> – with the Voice-Activated Touchscreen Navigation System.<sup>7</sup> You can use it to check fuel prices and station locations, taking advantage of all the latest traffic and travel information, along with vivid 3-D maps and pinch-to-zoom capability, on the large touchscreen within easy reach.



#### EXCLUSIVE AUDIO

Lincoln is the only automaker to offer Revel® and Revel Ultima® audio systems.<sup>7</sup> They're expertly engineered to deliver a level of precision and musical accuracy you won't just hear – you'll feel. It's as if you're seated in the "Audience" or up "On Stage" when using the personalized listening modes. Outstanding, multi-dimensional sound in every seat is courtesy of advanced cabin correction tuning, QuantumLogic® Surround sound technology, and Revel Waveguides. Revel Ultima features 19 speakers and patented Clari-Fi™ music restoration technology that enhances satellite radio, streaming services, MP3s and other digital sources – for clear, crisp, wide, dynamic sound.

#### QUICK STREAMING

Passengers can surf the web, stream movies and music, and more while you're driving, and up to 50' away from the vehicle when it's parked, using Lincoln Connect!™<sup>8</sup> It's an integrated 4G LTE Wi-Fi hotspot that can host up to 10 devices at a time. For help making the most of this, or any other Continental feature, remember your Lincoln Concierge is available 24/7.

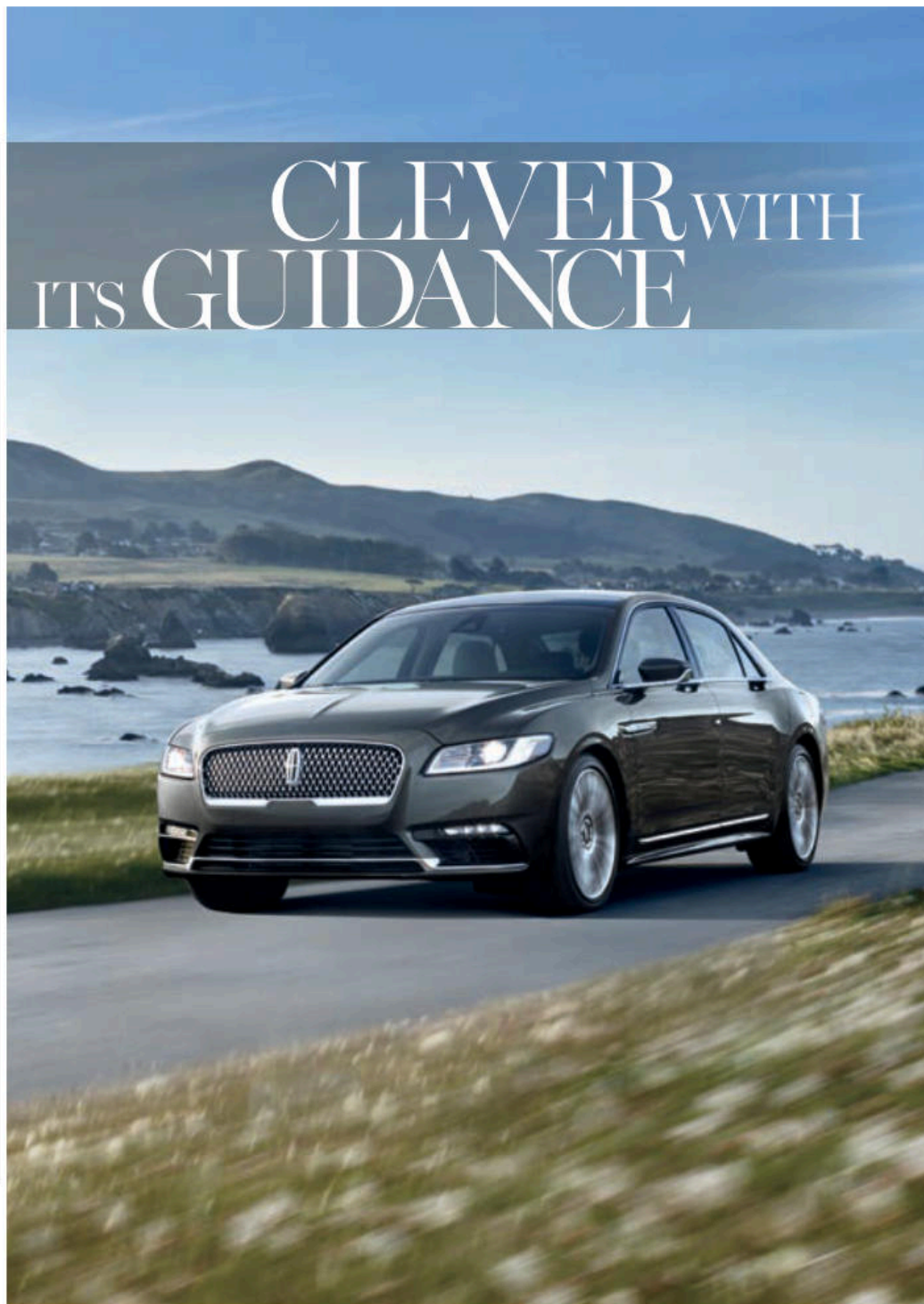
<sup>1</sup>Don't drive while distracted. Use voice-operated systems when possible; don't use handheld devices while driving. Some features may be locked out while the vehicle is in gear. Not all features are compatible with all phones. <sup>2</sup>Requires phone with active data service and compatible software. SYNC 3 does not control 3rd-party products while in use. 3rd parties are solely responsible for their respective functionality. <sup>3</sup>Commands may vary by phone and AppLink software. <sup>4</sup>Certain Alexa functionality is dependent on smart phone and home technology. <sup>5</sup>After your trial period ends, SiriusXM audio and data services each require a subscription sold separately, or as a package, by Sirius XM Radio Inc. See SiriusXM Customer Agreement for complete terms at [www.siriusxm.com](http://www.siriusxm.com). All fees and programming subject to change. Trial subscriptions not available in AK and HI. <sup>6</sup>Source: April 2018 analysis of satellite data service offers by SiriusXM to automobile manufacturers in the U.S.A. <sup>7</sup>Available feature. <sup>8</sup>See footnote 1 on the page titled "Standard Features," and your Lincoln Dealer for details.



# CLEVER WITH ITS GUIDANCE

Introducing the most comprehensive standard driver-assist technology collection Lincoln has ever offered: Lincoln Co-Pilot360™<sup>1</sup>

These smart features utilize a network of radar sensors and sophisticated cameras to help guide you through various scenarios. From backing out of a driveway or parking spot onto a busy street, to dealing with the fatigue of a long trip, Continental can help ease your drive.



<sup>1</sup>Driver-assist features are supplemental and do not replace the driver's attention, judgment and need to control the vehicle.



Standard Lincoln Co-Pilot360™ features:<sup>1</sup>

**BLIND SPOT DETECTION WITH CROSS-TRAFFIC ALERT**  
Helps warn of vehicles detected in blind spots while going forward and when slowly backing up

**PRE-COLLISION ASSIST WITH AUTOMATIC EMERGENCY BRAKING (AEB)<sup>2</sup>**  
Also features Pedestrian Detection

**LANE-KEEPING SYSTEM WITH DRIVER ALERT<sup>3</sup>**  
Can help alert you if you start to drift out of your lane

**REAR VIEW CAMERA**  
Displays what's behind the vehicle when in Reverse

**AUTO HIGH BEAM HEADLAMPS**  
Can help increase your forward visibility

Also standard on Continental:

**ADAPTIVE CRUISE CONTROL WITH STOP-AND-GO<sup>1</sup>**  
Helps while highway cruising or in lower-speed traffic

Continental Reserve adds the Technology Package:

**ENHANCED ACTIVE PARK ASSIST<sup>1</sup>**  
Helps you parallel park and back into perpendicular spots

**360-DEGREE CAMERA<sup>1</sup>**  
Offers a bird's-eye view of the vehicle and its surroundings, and a 180-degree front or rear view

**HEAD-UP DISPLAY<sup>4</sup>**  
Includes forward collision warning

**WINDSHIELD WIPER DE-ICER**  
Helps keep your view ahead clear



<sup>1</sup>Driver-assist features are supplemental and do not replace the driver's attention, judgment and need to control the vehicle. <sup>2</sup>Pre-Collision Assist with Automatic Emergency Braking (AEB) can detect pedestrians, but not in all conditions and does not replace safe driving. See owner's manual for system limitations. <sup>3</sup>Lane-Keeping System does not control steering. <sup>4</sup>Don't drive while distracted. See owner's manual for details and system limitations.





# THE LINCOLN WAY

## LINCOLN

### *PICKUP & DELIVERY*

When it's time for service, you can simply schedule a Lincoln Pickup & Delivery™ appointment with the Lincoln Way™ app<sup>1</sup> or by phone. We'll handle the rest. We'll pick up your vehicle and deliver it back to you when service is complete.<sup>2</sup> In between, we'll provide a complimentary Lincoln loaner<sup>2</sup> – so your time remains distinctly yours. Plus, we'll return your Lincoln washed and ready for your next journey.

### *LINCOLN & CLEAR*

Together, we're helping you put travel stress on standby. CLEAR® biometric technology allows members to bypass security lines at 30+ of the busiest airports and sports stadiums across the nation, getting them through security in about 5 minutes or less. As a 2019 Lincoln Continental owner, you and your spouse or significant other can enjoy a 6-month complimentary CLEAR membership.<sup>3</sup> Take your first step around the line by redeeming your Lincoln benefits with CLEAR.

### *LINCOLN WAY APP*

Downloading the Lincoln Way app<sup>1</sup> to your mobile device makes it easy to connect with us. The app lets you schedule Lincoln Pickup & Delivery, find fuel and compare prices, and even find, reserve and pre-pay for parking in select cities. Use it to contact a Lincoln Concierge, securely manage your Lincoln Automotive Financial Services account, and more. Lincoln Connect™<sup>4</sup> also works with the app to let you locate your vehicle, start it, and lock or unlock its doors from virtually anywhere. Combine it with the app and the Lincoln Way Alexa Skill<sup>5</sup> to remotely start your vehicle, and more, simply by speaking to your Amazon Alexa enabled device.

### *LINCOLN CONCIERGE*

You have a personal connection to the latest information about Lincoln vehicles, services and ownership benefits. Simply choose how you'd like to connect, and a highly trained Lincoln Concierge team member will help you explore Lincoln in the way that suits you best. Chat online at Lincoln.com. Reach us through the Lincoln Way app<sup>1</sup> Or call (800) 521-4140, anytime of the day or night.

<sup>1</sup>Available via download and compatible with select smartphone platforms. Learn more at [lincolnway.com](http://lincolnway.com). Message and data rates may apply. <sup>2</sup>Lincoln Pickup & Delivery is valid for owners of 2017 or newer model-year Lincoln vehicles. Service available for retail and warranty repairs. Mileage limitations may apply. See dealer for details. <sup>3</sup>CLEAR is currently available to U.S. citizens and legal permanent residents with valid photo I.D. Program eligibility for new retail purchases of 2018 and newer model-year Lincoln vehicles (12 months on Lincoln Black Label models; 6 months on all other Lincoln models). Full CLEAR enrollment, including biometrics, required to be completed within 120 days of vehicle delivery. <sup>4</sup>See footnote 1 on the page titled "Standard Features," and your Lincoln Dealer for details. <sup>5</sup>Certain Alexa functionality is dependent on smart phone and home technology.

Comparisons based on competitive models (class is Luxury Full-Size Sedans based on Lincoln segmentation), publicly available information and Lincoln certification data at time of release. Vehicles may be shown with optional equipment. Features may be offered only in combination with other options or subject to additional ordering requirements/limitations. Dimensions shown may vary due to optional features and/or production variability. Information is provided on an "as is" basis and could include technical, typographical or other errors. Lincoln makes no warranties, representations, or guarantees of any kind, express or implied, including but not limited to, accuracy, currency, or completeness, the operation of the information, materials, content, availability, and products. Lincoln reserves the right to change product specifications, pricing and equipment at any time without incurring obligations. Your Lincoln Dealer is the best source of the most up-to-date information on Lincoln vehicles.

2019 LINCOLN CONTINENTAL  
[Lincoln.com](http://Lincoln.com)



## STANDARD FEATURES

### POWER AND HANDLING

6-speed SelectShift® automatic transmission with paddle activation  
Electric parking brake  
Lincoln Drive Control featuring Adaptive Suspension, Electric Power-Assisted Steering (EPAS) with Adaptive Steering, and Active Noise Control  
Power disc brakes with Anti-Lock Brake System (ABS)

### DRIVER-ASSIST TECHNOLOGY

Lincoln Co-Pilot360™: Auto High Beam Headlamps, Blind Spot Detection with Cross-Traffic Alert, Lane-Keeping System with Driver Alert, Pre-Collision Assist with Automatic Emergency Braking (AEB) and Pedestrian Detection, and Rear View Camera  
Adaptive Cruise Control with Stop-and-Go  
Autolamp Automatic On/Off Headlamps  
Forward and Reverse Sensing Systems  
Hill Start Assist  
SYNC® 3 Enhanced Voice Recognition Communications and Entertainment System with 8" LCD capacitive touchscreen, 911 Assist®, SYNC 3 AppLink®, Apple CarPlay™ compatibility, Android Auto™ compatibility, and 2 smart-charging USB ports

### LINCOLN EXPERIENCES

Approach Detection  
Backlit E-Latch exterior door handles  
Lincoln logo illuminated welcome mats  
Lincoln signature fade-on exterior lighting

### DRIVER CONTROLS

Auto Hold  
Intelligent Access with push-button start  
Lincoln Connect™ 4G LTE embedded modem with Wi-Fi hotspot capability (enables Lincoln Way™ app<sup>1</sup> features when activated)  
Remote Start System  
Universal garage door opener

### EXTERIOR

Acoustic-laminate side door glass  
Adaptive HID headlamps with LED signature lighting  
Dual integrated chrome exhaust tips  
Power-adjustable/-folding, heated sideview mirrors with memory, security approach lamps, integrated LED turn signal indicators, and auto-dimming driver's side  
SoundScreen® acoustic windshield

### AUDIO

SiriusXM® with 6-month All-Access trial subscription<sup>2</sup>

### INTERIOR

Ambient lighting  
Power-tilt/-telescoping steering column with memory  
Power windows with one-touch-down front, one-touch-up/-down rear, and global open/close for all windows

### SAFETY AND SECURITY

Personal Safety System™ for driver and front passenger with dual-stage front airbags,<sup>3</sup> safety belt pretensioners, safety belt energy-management retractors, safety belt usage sensors, driver's seat position sensor, crash severity sensor, restraint control module and Front-Passenger Sensing System  
Driver's knee airbag<sup>3</sup>  
Front-seat side airbags<sup>3</sup>  
Glove-box-door-integrated knee airbag<sup>3</sup>  
Side-curtain airbags<sup>3</sup>  
AdvanceTrac® electronic stability control  
Individual Tire Pressure Monitoring System (excludes spare)  
LATCH (Lower Anchors and Tether Anchors for Children)  
MyKey® technology to help encourage responsible driving  
Perimeter alarm  
SecuriCode™ invisible keypad  
SecuriLock® Passive Anti-Theft System  
SOS Post-Crash Alert System™

## ENGINES

### 3.7-liter Ti-VCT V6

305 hp @ 6,500 rpm  
280 lb.-ft. of torque @ 4,000 rpm

EPA-estimated fuel economy ratings<sup>4</sup>  
17 city/26 hwy/20 combined mpg

Standard: Continental  
and Continental Select FWD

16 city/24 hwy/19 combined mpg

Optional: Continental  
and Continental Select AWD

### Twin-Turbocharged 2.7-liter V6

335 hp @ 5,700 rpm<sup>5</sup>  
380 lb.-ft. of torque @ 3,500 rpm<sup>5</sup>

EPA-estimated fuel economy ratings<sup>4</sup>  
18 city/27 hwy/21 combined mpg

Standard: Continental Reserve FWD

17 city/25 hwy/20 combined mpg

Optional: Continental Reserve AWD

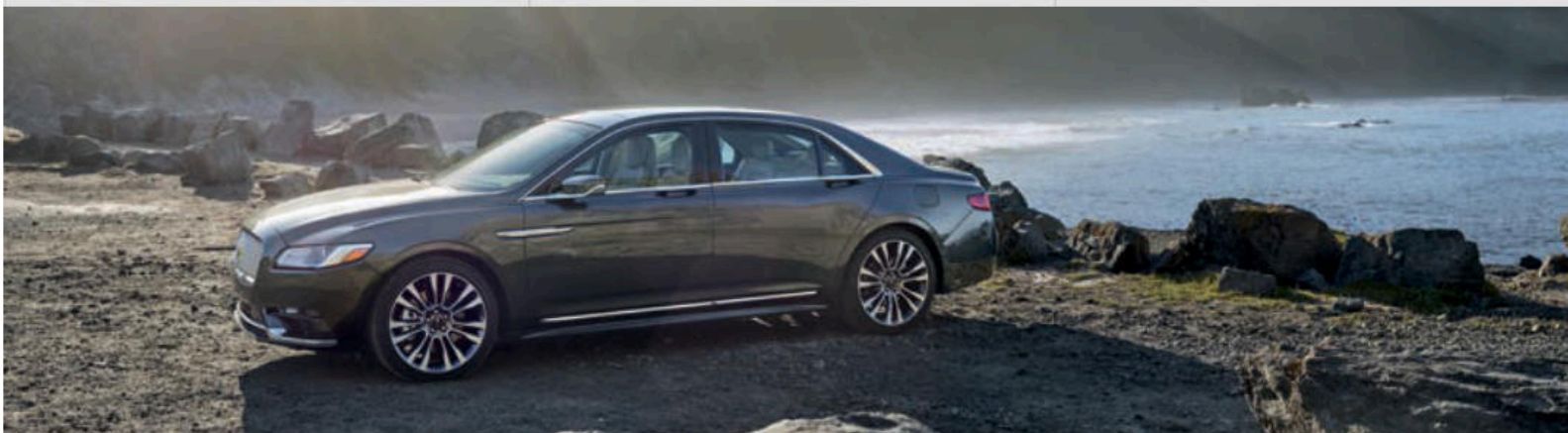
### Twin-Turbocharged 3.0-liter V6

400 hp @ 5,750 rpm<sup>5</sup>  
400 lb.-ft. of torque @ 2,750 rpm<sup>5</sup>

EPA-estimated fuel economy ratings<sup>4</sup>  
16 city/24 hwy/19 combined mpg

Includes Dynamic Torque Vectoring  
(requires AWD)

Optional: Continental Reserve AWD



<sup>1</sup>Lincoln Connect includes complimentary 5-year subscription for remote features excluding Wi-Fi hotspot, and starts with vehicle sale date. Subscription is subject to compatible 4G network availability. Evolving technology/cellular networks may affect future functionality. Certain restrictions, 3rd-party terms, or message/data rates may apply. Wi-Fi hotspot includes complimentary wireless data trial that begins upon AT&T activation and expires at the end of 3 months or when 3GB of data is used, whichever comes first, but cannot extend beyond the complimentary subscription period for remote features. To activate, go to [www.att.com/lincoln](http://www.att.com/lincoln). Lincoln Way smartphone app, for use with Lincoln Connect, is available via download and compatible with select smartphone platforms. Lincoln Way is on the App Store® and Google Play.™ Learn more at [lincolnway.com](http://lincolnway.com). Message and data rates may apply. <sup>2</sup>After your trial period ends, SiriusXM audio and data services each require a subscription sold separately, or as a package, by Sirius XM Radio Inc. See SiriusXM Customer Agreement for complete terms at [www.siriusxm.com](http://www.siriusxm.com). All fees and programming subject to change. Trial subscriptions not available in AK and HI. <sup>3</sup>Always wear your safety belt and secure children in the rear seat. <sup>4</sup>Actual mileage will vary. <sup>5</sup>Horsepower and torque ratings achieved with 93-octane fuel.



TRIM SERIES

CONTINENTAL

INCLUDES STANDARD FEATURES, PLUS:

- 60/40 split-folding rear seat
- Comfort front seats with 10-way power adjustability
- Dual-zone electronic automatic temperature control
- Heated front seats
- Leather-wrapped steering wheel
- Lincoln Premium Sound System with AM/FM stereo and 10 speakers
- Lincoln Soft-Touch seating surfaces

OPTIONS

- Cargo area protector
- Engine block heater
- Floor liners
- Intelligent all-wheel drive (AWD)

CONTINENTAL SELECT

INCLUDES CERTAIN CONTINENTAL FEATURES, PLUS:

- 110V/150W AC power outlet
- Autofold sideview mirrors
- Bridge of Weir Deepsoft™ leather-trimmed seats
- Hands-free, foot-activated trunk lid
- Illuminated front door-sill scuff plates
- Leather-wrapped steering wheel with genuine wood accent
- Power-cinch door closing
- Rear-seat smart-charging USB ports (2)
- Voice-Activated Touchscreen Navigation System with pinch-to-zoom capability, and integrated SiriusXM® Traffic and Travel Link® with 6-year prepaid subscription<sup>1</sup>

OPTIONS

- Cargo area protector
- Climate Package:** heated rear outboard seats, heated steering wheel, and windshield wiper de-icer
- Dual-panel moonroof with power sunshade
- Engine block heater
- Floor liners
- Inflatable safety belts in rear outboard seating positions<sup>2</sup>
- Intelligent all-wheel drive (AWD)
- Perfect Position front seats with 30-way power adjustability including thigh extenders and head restraints, plus Active Motion® massage functionality (includes heated and ventilated front seats)
- Revel® audio system with 13 speakers, 12-channel Class D amplifier and QuantumLogic® Surround sound technology; includes HD Radio™ Technology

CONTINENTAL RESERVE

INCLUDES CERTAIN SELECT FEATURES, PLUS:

- Climate Package**
- Dual-panel moonroof with power sunshade
- Heated and ventilated front seats
- Perfect Position front seats with 24-way power adjustability including thigh extenders and head restraints
- Rear-window power sunshade
- Revel audio system with 13 speakers
- Technology Package:** Head-up display, 360-degree camera with front camera washer and enhanced active park assist
- Tri-zone electronic automatic temperature control

OPTIONS

- 20" high-performance summer compound tires<sup>3</sup> (requires 3.0-liter engine and 20" wheels)
- Cargo area protector
- Engine block heater
- Floor liners
- Inflatable safety belts in rear outboard seating positions<sup>2</sup>
- Intelligent all-wheel drive (AWD)
- Perfect Position front seats with 30-way power adjustability
- Premium LED headlamps with fade-on/-off dynamic Lincoln Embrace (requires Revel Ultima®)
- Rear-Seat Package:** 40/20/40 split rear seats; rear center armrest with LCD screen, rear climate controls and cupholders; dual-panel moonroof; heated and ventilated rear outboard seats with Active Motion, power recline and 4-way power lumbar; manual rear head restraints with adjustable bolsters; inflatable rear outboard safety belts;<sup>2</sup> rear-door window sunshades; and rear climate control B-pillar registers (requires 30-way Perfect Position front seats)
- Revel Ultima audio system with single-CD player, 19 speakers, 20-channel hybrid amplifier, Clari-Fi™ music restoration technology, QuantumLogic Surround sound technology and aluminum speaker grilles; includes HD Radio Technology (requires premium LED headlamps)

LINCOLN ACCESSORIES

ELECTRONICS

- Bullfrog® portable Bluetooth® speakers<sup>4</sup>
- NextBase® Duo Cinema<sup>4,5</sup>
- Remote start systems
- Vehicle Security System

EXTERIOR

- Full vehicle cover<sup>4</sup>
- Side window deflectors<sup>4</sup>
- Wheel lock kit

INTERIOR

- Ash cup/coin holders
- Cargo area protector
- Carpeted floor mats
- Custom UVS100® sunscreen<sup>4</sup>
- First aid and roadside assistance kits<sup>4</sup>
- Floor liners
- In-vehicle safe<sup>4</sup>
- Soft cargo cooler bag
- Soft cargo organizers (large and standard sizes)

Shop the complete collection at [accessories.lincoln.com](http://accessories.lincoln.com)

DIMENSIONS

WHEELBASE	117.9"
LENGTH	201.4"
HEIGHT	58.5"
WIDTH	82.3" (including mirrors) 78.1" (mirrors folded)
HEAD ROOM	39.3" (max.) front/37.7" rear
LEG ROOM	44.4" (max.) front/41.3" rear
HIP ROOM	55.9" front/54.8" rear
SHOULDER ROOM	58.3" front/55.9" rear
CARGO VOLUME	16.7 cu. ft.
INTERIOR VOLUME	123.1 cu. ft.
FUEL TANK	18.0 gal.

<sup>1</sup>After your trial period ends, SiriusXM audio and data services each require a subscription sold separately, or as a package, by Sirius XM Radio Inc. See SiriusXM Customer Agreement for complete terms at [www.siriusxm.com](http://www.siriusxm.com). All fees and programming subject to change. Trial subscriptions not available in AK and HI. <sup>2</sup>Always wear your safety belt and secure children in the rear seat. <sup>3</sup>Lincoln does not recommend using summer tires when temperatures drop to approximately 45°F or below (depending on tire wear and environmental conditions) or in snow/ice conditions. If the vehicle must be driven in these conditions, Lincoln recommends using all-season or snow tires. <sup>4</sup>Lincoln Licensed Accessory. <sup>5</sup>Not available with Perfect Position front seats.

Lincoln Original Accessories will be warranted for whichever provides you the greatest benefit: 24 months/unlimited mileage, or the remainder of your Bumper-to-Bumper 4-year/50,000-mile New Vehicle Limited Warranty. Lincoln Licensed Accessories (LLA) are warranted by the accessory manufacturer's warranty. LLA are designed and developed by the accessory manufacturer and have not been designed or tested to Ford Motor Company engineering requirements. Contact your Lincoln Dealer for details and/or a copy of all limited warranties. Amazon, Alexa and all related logos are trademarks of Amazon.com, Inc. or its affiliates. Android Auto, Google, Google Play, Waze and other marks are trademarks of Google Inc. Apple, Apple CarPlay and iPhone are trademarks of Apple Inc., registered in the U.S. and other countries. App Store is a service mark of Apple Inc. Bridge of Weir is a trademark of Bridge of Weir Leather Company Limited. Bullfrog is a registered trademark of Stillwater Designs. Clari-Fi, QuantumLogic, Revel, Ultima and the Revel logo are trademarks of HARMAN International Industries, registered in the United States and other countries. "HD Radio" and the HD Radio logo are proprietary trademarks of iBiquity Digital Corporation. Sirius, XM, SiriusXM, and all related marks and logos are trademarks of Sirius XM Radio Inc. The Bluetooth word mark is a trademark of the Bluetooth SIG, Inc.



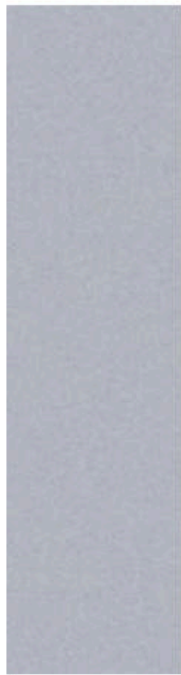
EXTERIOR FINISHES



1  
Infinite Black  
Metallic



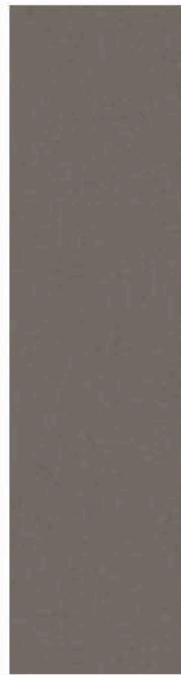
2  
White Platinum  
Metallic Tri-coat<sup>1</sup>



3  
Ingot Silver  
Metallic



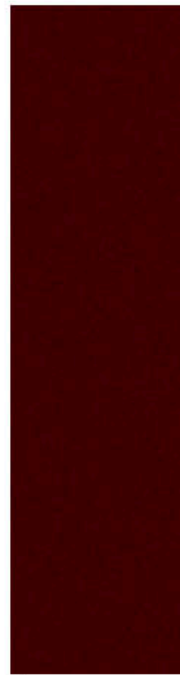
4  
Ceramic Pearl  
Metallic Tri-coat<sup>1</sup>



5  
Iced Mocha  
Metallic<sup>1</sup>



6  
Ruby Red  
Metallic Tinted  
Clearcoat<sup>1</sup>



7  
Burgundy Velvet  
Metallic Tinted  
Clearcoat<sup>1</sup>



8  
Magnetic Gray  
Metallic

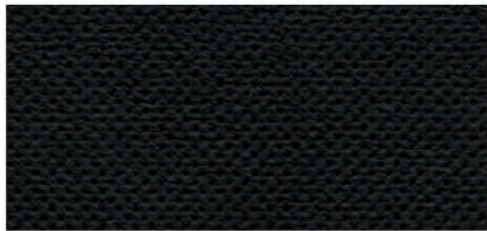


9  
Blue Diamond  
Metallic

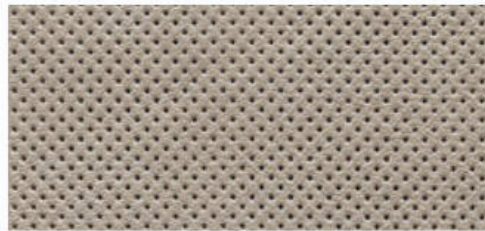


10  
Rhapsody Blue<sup>1</sup>

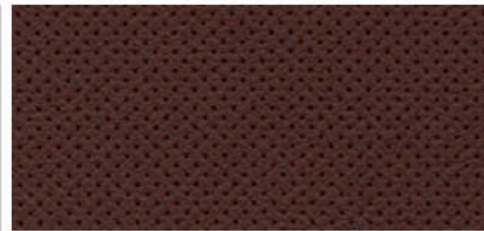
INTERIOR PALETTE



Ebony



Cappuccino



Terracotta



Brown Swirl Walnut



Espresso Ash Swirl



Brown Swirl Walnut

INTERIOR	EXTERIOR	
<b>Ebony<sup>2</sup></b>		
Brown Swirl Walnut	Continental	1-9
	Select	1-9
	Reserve	1-10
<b>Cappuccino<sup>2</sup></b>		
Espresso Ash Swirl	Continental	1-9
	Select	1-9
	Reserve	1-10
<b>Terracotta</b>		
Brown Swirl Walnut	Reserve	1-5, 8





18" Premium Magnetic-Painted Aluminum  
**CONTINENTAL**



19" Premium Dark Stainless-Painted Aluminum with Chrome Inserts  
**CONTINENTAL SELECT**



20" Polished Aluminum with Dark Tarnish-Painted Pockets  
**CONTINENTAL SELECT / CONTINENTAL RESERVE** Optional



19" Polished Aluminum with Premium Ebony-Painted Pockets  
**CONTINENTAL RESERVE** with 2.7-liter



19" Polished Aluminum with Premium Dark Tarnish-Painted Pockets  
**CONTINENTAL RESERVE** with 3.0-liter

