

2018 LINCOLN MKX





# REDEFINING THE LUXURY EXPERIENCE

At Lincoln, we believe that luxury extends far beyond material possessions. Which is why, along with the intuitive features and luxury appointments of your Lincoln MKX, you will receive an exclusive collection of services we call the Lincoln Way.<sup>™</sup> These liberating benefits are designed to help uncomplicate your life. Making each day more effortless – and empowering you to soak up every brilliant, wonderful moment along the way.





# ITS WELCOMING EMBRACE MARKS YOUR ARRIVAL

There's a comforting reassurance to the way Lincoln MKX recognizes your approach and warmly greets you with a series of illuminating gestures. Dynamic signature lighting<sup>1</sup> beneath each HID headlamp gracefully flows outward, while other exterior LED lamps fade on, and luminous welcome mats quietly appear on the ground. The LED lights in its door handle pockets glow with an intensity that's fine-tuned to your chosen exterior color. Ambient lighting<sup>1</sup> puts on a show inside, followed by the autofold<sup>1</sup> sideview mirrors deploying to your personalized settings as you relax into your seat. Your Lincoln MKX has been expecting you.

<sup>1</sup>Available feature.



Twin-Turbocharged 2.7-liter V6<sup>1</sup>

3.7-liter Ti-VCT V6

**335** hp<sup>2</sup>/**380** lb.-ft. torque<sup>2</sup>

**303** hp/**278** lb.-ft. torque



#### EMPOWERING YOU IN EXHILARATING WAYS

When elegance and intensity converge, remarkable ideas take shape. Lincoln MKX exemplifies this progressive way of thinking. From the moment you take the wheel, a feeling of confidence washes over you.

Whether you're commanding the Twin-Turbocharged 2.7-liter V6<sup>1</sup> or the standard 3.7-liter Ti-VCT V6, you'll notice the smooth response of the 6-speed SelectShift<sup>®</sup> automatic transmission with paddle shifters. The 2.7-liter employs turbochargers to provide you with a virtually instantaneous surge of power on demand, while the 3.7-liter uses twin independent variable camshaft timing to help optimize fuel combustion. Whichever you select, you're sure to enjoy its performance.

<sup>1</sup>Available feature. <sup>2</sup>Horsepower and torque ratings achieved with 93-octane fuel.





# DISCOVER ITS ELEGANT DESIGN

Allow yourself to be enveloped by this stunning environment. Delight in the harmony of its graceful lines, accented by genuine wood<sup>1</sup> or aluminum<sup>1</sup> trim. Enhance the atmosphere with ambient lighting<sup>1</sup> in your choice of 7 hues, as the convenient memory feature recalls your preferred placement of the driver's seat, power-tilt and -telescoping steering column,<sup>1</sup> and heated sideview mirrors. Put yourself pleasantly in control with a heated<sup>1</sup> steering wheel.

The dramatic, flowing suspension bridge between the instrument panel and center console is a beautiful benefit of the placement of its sleek transmission shifter buttons. This design also provides plenty of space for the travel essentials that make Lincoln MKX distinctly yours.

<sup>1</sup>Available feature.

2018 LINCOLN MKX  
Lincoln.com





# NURTURE YOUR SPIRIT IN A QUIET SPACE

Serenity awaits. From the acoustic-laminate glass in its windshield and front doors to the tuning of its tires, Lincoln MKX is designed to be your sanctuary. The artisans of Lincoln even utilize the audio systems in their quest for quiet. By sending precisely chosen sound waves through your speakers, Active Noise Control<sup>1</sup> cancels out unwanted noise and refines engine sounds. The result is a thoroughly calming ambience. As you relax inside, breathe in the luxurious scent of Bridge of Weir Deepsoft™ leather<sup>1</sup> created exclusively for Lincoln by the historic Scottish tannery. Engage the Active Motion® massage functionality of the heated and cooled Ultra Comfort front seats<sup>1</sup> to help reduce muscle fatigue in your upper legs and lower back. Heated rear outboard seats<sup>1</sup> help keep your passengers cozy, while they enjoy the most 2nd-row head and leg room in its class.<sup>2</sup>

Suddenly, there's more power in your kick. With the Hands-Free Liftgate,<sup>1</sup> your key fob can stay tucked away in your pocket or bag while you simply kick your foot beneath the rear bumper. The liftgate effortlessly opens to reveal a flat load floor and abundant space with both sides of the 60/40 split rear seat folded down. Once you've loaded your cargo, close the liftgate with the press of a button, or with another kick.



<sup>1</sup>Available feature. <sup>2</sup>Class is Luxury Midsize Utilities based on Lincoln segmentation.





## LINCOLN SYNC® 3

Feel free to speak your mind. Lincoln MKX listens. With its SYNC 3 enhanced voice-activated technology,<sup>1</sup> you can control calls, music and more with just a touch and your voice. You'll find audio, phone, navigation<sup>2</sup> and other features concisely presented on the responsive touchscreen in the middle of your instrument panel. SYNC AppLink<sup>®3</sup> lets you control compatible mobile apps by voice. Plus, seamless integration with Siri<sup>®</sup> Eyes Free brings the power of your paired iPhone<sup>®</sup> into your vehicle. SYNC 3 also includes Apple CarPlay<sup>™</sup> compatibility<sup>4</sup> and Android Auto<sup>™</sup> compatibility.<sup>4</sup> The Voice-Activated Touchscreen Navigation System<sup>2</sup> features vivid 3-D maps with pinch-to-zoom capability. And automatic updates over Wi-Fi<sup>5</sup> provide the latest SYNC 3 software as new updates become available.

Passengers can connect up to 10 devices at a time using the 4G LTE Wi-Fi hotspot capability of Lincoln Connect.<sup>™6</sup> Let them surf the web, stream music and more while you're on the go, and up to 50' away from the vehicle when it's parked. For help making the most of this or any other Lincoln MKX feature, remember your Lincoln Concierge is available 24/7.

### STAY CONNECTED WITH VOICE-ACTIVATED SIMPLICITY



Music has the power to calm and soothe... invigorate and liberate. Whatever your preference, our expertly engineered Revel<sup>®</sup> and Revel Ultima<sup>®</sup> audio systems<sup>2</sup> can deliver a level of precision and musical accuracy you won't just hear – you'll feel. It's as if you're seated in the "Audience" or right up "On Stage" when you use the personalized listening modes.

Enjoy outstanding, multidimensional sound in every seat courtesy of QuantumLogic<sup>®</sup> Surround sound technology, Revel Waveguides, and advanced cabin correction tuning. The 19-speaker Revel Ultima audio system uses patented Clari-Fi<sup>™</sup> music restoration technology to enhance satellite radio, streaming services, MP3s and other digital sources – for clear, crisp, wide, dynamic sound.

### INTENSIFY YOUR AUDIO ENJOYMENT



<sup>1</sup>Don't drive while distracted. Use voice-operated systems when possible; don't use handheld devices while driving. Some features may be locked out while the vehicle is in gear. Not all features are compatible with all phones. <sup>2</sup>Available feature. <sup>3</sup>Certain restrictions, 3rd-party terms, or message and data rates may apply. See your Lincoln Dealer for details. Commands may vary by phone and AppLink software. <sup>4</sup>Requires phone with active data service and compatible software. SYNC 3 does not control 3rd-party products while in use. 3rd parties are solely responsible for their respective functionality. <sup>5</sup>Optional Navigation System map updates cannot be received via Wi-Fi and require a separate update. <sup>6</sup>See footnote 1 on "Your 2018 Lincoln MKX Standard Features" page, and your Lincoln Dealer for details.



# BECOME ONE WITH THE ROAD

Imagine yourself gliding along – blissfully at peace. Lincoln MKX can take you there, courtesy of its Lincoln Drive Control<sup>1</sup> featuring Adaptive Suspension, which helps isolate your vehicle from road imperfections. To personalize your ride, explore each of the 3 drive modes – Comfort, Normal and Sport. Adaptive Steering<sup>1</sup> helps your vehicle feel taut and stable at higher speeds, yet very agile and fluid at lower speeds. The technology operates seamlessly, behind the scenes, so you can stay focused on enjoying the ride.

## GLIDE EFFORTLESSLY

Through advanced software and engineering, Torque Vectoring Control actively adjusts the speed between your front wheels for enhanced cornering agility.<sup>2</sup> Fully automatic Intelligent all-wheel drive (AWD)<sup>1</sup> also adjusts torque as needed – typically before wheelslip can even occur – to help Lincoln MKX perform at its best in various conditions.

## CORNER CONFIDENTLY



<sup>1</sup>Available feature. <sup>2</sup>Remember that even advanced technology cannot overcome the laws of physics. It's always possible to lose control of a vehicle due to inappropriate driver input for the conditions.

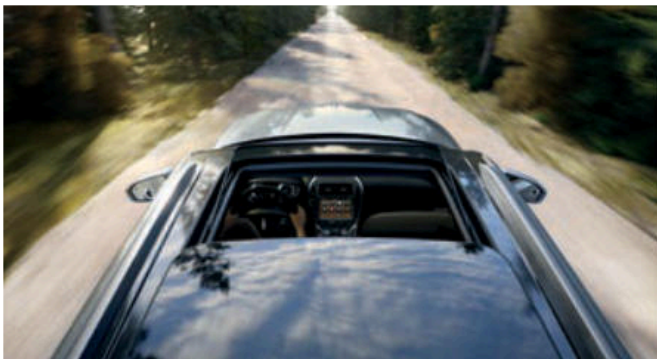




TECHNOLOGIES  
HELP  
SIMPLIFY  
YOUR DAY

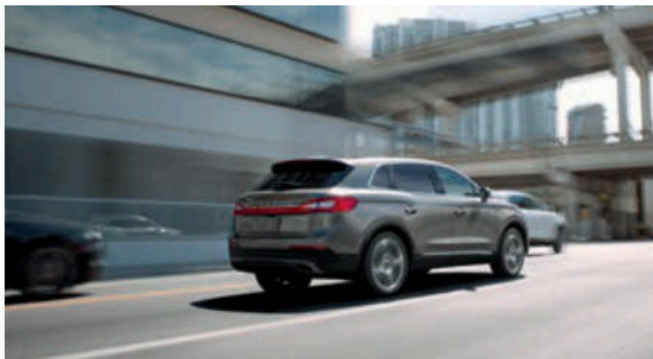
2018 LINCOLN MKX  
Lincoln.com





**ADAPTIVE CRUISE CONTROL<sup>1,2</sup>** – Certain driving situations can get tedious. When highway cruising, this system is designed to eliminate the need for constant adjustments. You simply set the speed, and the system can adjust to maintain your choice of 4 preset gaps from the vehicle in front of you.

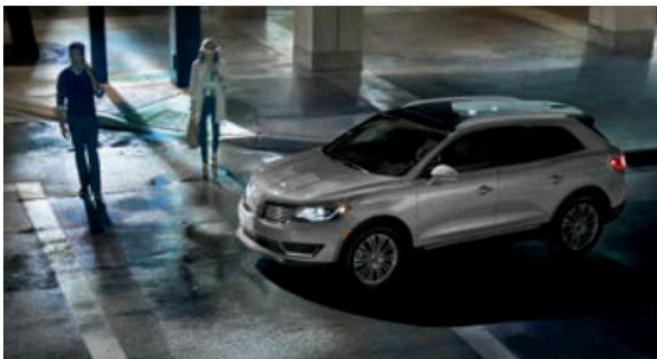
**AUTO HOLD<sup>1</sup>** – You don't need to hold down the brake pedal for long stoplights or extended waits in Lincoln MKX. Just activate Auto Hold, then come to a complete stop. Even on a hill, the system can hold the vehicle in place until you press the accelerator.



**BLIS® (BLIND SPOT INFORMATION SYSTEM) WITH CROSS-TRAFFIC ALERT<sup>1,2</sup>** – Some vehicles may be out of your line of sight, but they can be detected by this technology. It warns you if it detects a vehicle in your blind spots while driving forward, or approaching from the sides while in Reverse.



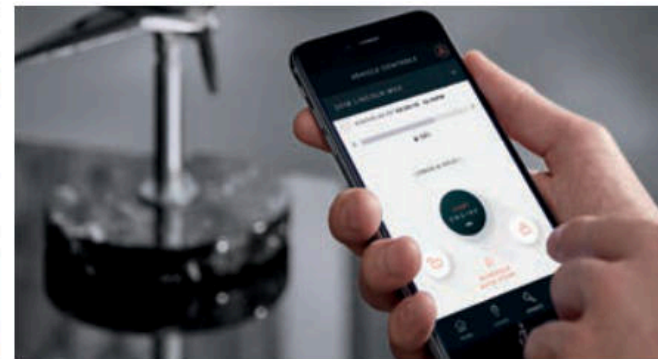
**LANE-KEEPING SYSTEM<sup>1,2</sup>** – If you start to drift out of your lane, this technology can help alert you. Using a forward-facing camera to detect road lane markings, the system can apply steering wheel torque and even alert you with a steering wheel vibration to help direct you to return to your lane.<sup>3</sup> If it detects that you've crossed the line repeatedly, it can prompt the Driver Alert System<sup>1,2</sup> to chime and display a coffee cup image to remind you that it's break time.



**PRE-COLLISION ASSIST WITH PEDESTRIAN DETECTION<sup>1,2</sup>** – Using camera and radar technology, the system can scan the road for other vehicles and pedestrians ahead of you. If a potential collision is detected, it can alert you and, if needed, help provide full responsiveness when you brake. If the system determines a collision is imminent, Active Braking may automatically apply full braking.<sup>4</sup>



**ENHANCED ACTIVE PARK ASSIST<sup>1,2</sup>** – For help parallel parking or backing into a perpendicular spot, simply activate this system. It uses ultrasonic sensors to help you locate an appropriate space, then steers the vehicle into it. All you do is follow on-screen prompts and control the shifter, brake and accelerator pedals. It can steer out of parallel spots, too. For more help with maneuvering, the Forward<sup>2</sup> and Reverse Sensing Systems<sup>1</sup> can alert you to objects near the front or rear of your vehicle. Plus, a rear view camera<sup>1</sup> is standard on every Lincoln MKX.



**THE LINCOLN WAY™ APP<sup>5</sup> AND LINCOLN CONNECT™<sup>6</sup>** – Together, they provide effortless control of your mobility. Simply download the app to your mobile device, then use it to start your vehicle remotely, schedule a recurring daily or weekly start time, locate your vehicle, remotely lock or unlock its doors and more. The app is also an easy way to reach our Lincoln Concierge team. They're always ready to assist you with personalized vehicle solutions, roadside assistance and more.

<sup>1</sup>Driver-assist features are supplemental and do not replace the driver's attention, judgment and need to control the vehicle. <sup>2</sup>Available feature. <sup>3</sup>Lane-Keeping System does not control steering. <sup>4</sup>Pre-Collision Assist with Pedestrian Detection can detect pedestrians, but not in all conditions and does not replace safe driving. See owner's manual for system limitations. <sup>5</sup>The Lincoln Way app, compatible with select smartphone platforms, is available via a download. Message and data rates may apply. <sup>6</sup>Certain restrictions, 3rd-party terms, or message and data rates may apply. See footnote 1 on "Your 2018 Lincoln MKX Standard Features" page, and your Lincoln Dealer for details.



# ATTENTION TO DETAIL STANDS OUT

From its eye-catching Lincoln Star that lifts to reveal the front lens of a 360-Degree Camera<sup>1</sup> when needed, then discreetly hides it away again. To its power panoramic Vista Roof<sup>®1</sup> offering every passenger incredible skyward views. To the tailored look of the precisely stitched seating, as well as the padded dashboard, door trim and center console lid. And all the way down to the LED signature lighting beneath its HID headlamps, the 2018 Lincoln MKX is elegantly designed to turn heads.



<sup>1</sup>Available feature.



For more information, visit  
[LINCOLN.COM/LINCOLNWAY](http://LINCOLN.COM/LINCOLNWAY)

# EXPERIENCE THE LINCOLN WAY

A unique range of services designed  
to make Lincoln ownership effortless



## LINCOLN *PICKUP & DELIVERY*

### AN EFFORTLESS DOOR-TO-DOOR EXPERIENCE

We know your time is valuable. That's why we designed Lincoln Pickup & Delivery<sup>1</sup> to help you move seamlessly through life. We'll pick up your vehicle when it's time for service, and bring it back to you when the work is complete. In between, we'll also provide a complimentary Lincoln loaner<sup>1</sup> – so your time remains distinctly yours.

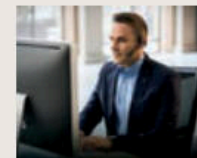
You specify the time and location, and we do everything else. With convenient texts or emails, we'll keep you informed about your vehicle and provide timely updates. To complete the experience, we'll deliver your Lincoln back to you serviced, washed and ready for your next journey. When it comes to owning a Lincoln, we make it simple.

- ♦ Schedule a day, time and location for pickup of your Lincoln
- ♦ We'll pick up your vehicle and provide you with a Lincoln loaner
- ♦ We'll deliver your Lincoln back to you, serviced and washed



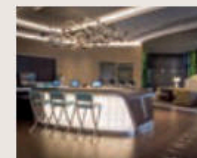
### THE LINCOLN WAY™ APP<sup>2</sup>

Download the app to your mobile device to enjoy the flexibility and convenience of connecting with Lincoln services and features from wherever life takes you. The app makes it easy to schedule Pickup & Delivery. Find fuel and compare prices. Find, reserve and pre-pay for parking in select cities. Call or chat one-on-one with a Lincoln Concierge anytime. Securely manage your Lincoln Automotive Financial Services account, and more.



### LINCOLN CONCIERGE

Always available to answer vehicle questions, help you with roadside assistance<sup>3</sup> and beyond – 24 hours a day, 7 days a week.



### LINCOLN EXPERIENCE CENTERS

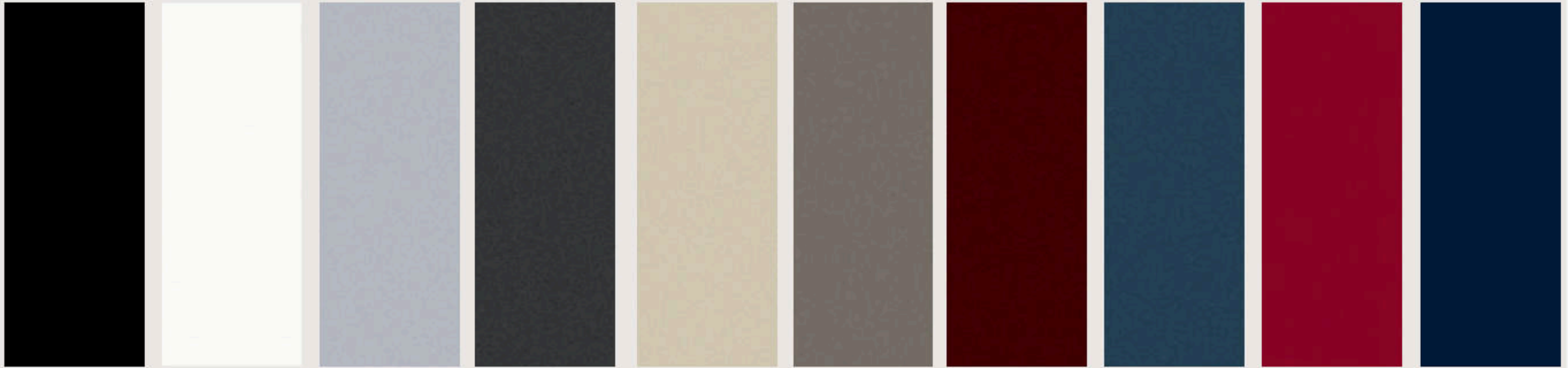
Exclusive events, vehicle demonstrations and curated experiences await you in select cities.

<sup>1</sup>Lincoln Pickup & Delivery is valid for owners of 2017 and newer model-year Lincoln vehicles. Service available for retail and warranty repairs. Mileage limitations may apply. Lincoln reserves the right to change program at any time without obligation. See dealer for details. <sup>2</sup>The Lincoln Way app, compatible with select smartphone platforms, is available via a download. Message and data rates may apply. <sup>3</sup>Lincoln Roadside Assistance services 24/7 for as long as you own the vehicle – all at no charge. See your owner's manual for complete details.

2018 LINCOLN MKX  
[Lincoln.com](http://Lincoln.com)



EXTERIOR FINISHES



1 Black Velvet    2 White Platinum Metallic Tri-coat<sup>1</sup>    3 Ingot Silver Metallic    4 Magnetic Gray Metallic    5 Ivory Pearl Metallic Tri-coat<sup>1</sup>    6 Iced Mocha Metallic<sup>1</sup>    7 Burgundy Velvet Metallic Tinted Clearcoat<sup>1</sup>    8 Blue Diamond Metallic    9 Ruby Red Metallic Tinted Clearcoat<sup>1</sup>    10 Rhapsody Blue<sup>1</sup>

INTERIOR PALETTE



Cappuccino    Hazelnut    Ebony    Terracotta    Espresso Ash Swirl    Brushed Aluminum    Brown Swirl Walnut    Sonata Spin Aluminum

	Espresso Ash Swirl	Brushed Aluminum	Brown Swirl Walnut	Sonata Spin Aluminum <sup>3</sup>
Cappuccino <sup>2</sup>	Select 1-9 Reserve 1-10	Base/Premiere 1-9		Select 1-9 Reserve 1-10
Hazelnut	Reserve 1-8			Reserve 1-8
Ebony <sup>2</sup>		Base/Premiere 1-9	Select 1-9 Reserve 1-10	Select 1-9 Reserve 1-10
Terracotta			Reserve 1-8	Reserve 1-8

Colors are representative only. <sup>1</sup>Additional charge. <sup>2</sup>Lincoln Soft-Touch standard on Base/Premiere. <sup>3</sup>Optional on Select and Reserve.



## YOUR 2018 LINCOLN MKX STANDARD FEATURES

### POWER AND HANDLING

- ◆ 6-speed SelectShift® automatic transmission with paddle activation
- ◆ Electric parking brake
- ◆ Electric Power-Assisted Steering (EPAS)
- ◆ Front-wheel drive (FWD)
- ◆ Power disc brakes with Anti-Lock Brake System (ABS)
- ◆ Torque Vectoring Control

### DRIVER-ASSIST TECHNOLOGY

- ◆ Autolamp automatic on/off headlamps
- ◆ Hill start assist
- ◆ Reverse Sensing System
- ◆ SYNC® 3 Enhanced Voice Recognition Communications and Entertainment System with 8" color LCD capacitive touchscreen, 911 Assist®, AppLink®, Apple CarPlay™ compatibility, Android Auto™ compatibility, and 2 smart-charging USB ports

### DRIVER CONTROLS

- ◆ Auto Hold
- ◆ Dual-zone electronic automatic temperature control
- ◆ Lincoln Connect™<sup>1</sup> powered by the Lincoln Way™ app (includes 4G LTE Wi-Fi hotspot capability)
- ◆ Push-button shift transmission
- ◆ Remote Start System
- ◆ Steering wheel-mounted audio and cruise controls

### EXTERIOR

- ◆ Acoustic-laminate windshield and front-door glass
- ◆ Dual bright exhaust tips
- ◆ Easy Fuel® capless fuel filler
- ◆ HID headlamps with LED signature lighting
- ◆ LED taillamps
- ◆ Power-adjustable, manually folding, heated, body-color sideview mirrors with memory and integrated LED turn signal indicators

### LINCOLN EXPERIENCES

- ◆ LED-illuminated exterior door handle pockets
- ◆ Lincoln Approach Detection System
- ◆ Lincoln logo welcome mat
- ◆ Lincoln signature fade-on exterior lighting

### AUDIO

- ◆ Lincoln Premium Sound System with AM/FM stereo/single-CD player, MP3 capability and 10 speakers including subwoofer
- ◆ SiriusXM® Radio with 6-month All-Access trial subscription<sup>2</sup>

### INTERIOR

- ◆ 12V powerpoints (4)
- ◆ Leather-wrapped steering wheel
- ◆ Power windows with one-touch-up/-down with global open/close for all 4 windows

### SEATING

- ◆ Comfort front seats with 10-way power adjustability and driver's side memory feature
- ◆ 60/40 split-fold-flat rear seat with recline and EasyFold® seat back release

### SAFETY AND SECURITY

- ◆ Personal Safety System™ for driver and front passenger with dual-stage front airbags,<sup>3</sup> safety belt pretensioners, safety belt energy-management retractors, safety belt usage sensors, driver's seat position sensor, crash severity sensor, restraint control module and Front-Passenger Sensing System
- ◆ Driver's knee airbag<sup>3</sup>
- ◆ Glove-box-door-integrated knee airbag<sup>3</sup>
- ◆ Front-seat side airbags<sup>3</sup>
- ◆ Safety Canopy® side-curtain airbags<sup>3</sup>
- ◆ AdvanceTrac® with RSC® (Roll Stability Control™)
- ◆ Intelligent Access with push-button start
- ◆ LATCH (Lower Anchors and Tether Anchors for Children)
- ◆ MyKey® technology to help parents encourage responsible driving
- ◆ Perimeter alarm
- ◆ Rear view camera
- ◆ SecuriCode™ invisible keypad
- ◆ SecuriLock® Passive Anti-Theft System
- ◆ SOS Post-Crash Alert System™
- ◆ Tire Pressure Monitoring System (excludes spare)

### DIMENSIONS

#### WHEELBASE

112.2"

#### LENGTH

190.0"

#### HEIGHT

66.2"

#### WIDTH

86.1" (including mirrors)  
78.7" (mirrors folded)

#### HEAD ROOM

39.9" front/39.2" rear

#### LEG ROOM

42.8" (max.) front/39.6" rear

#### HIP ROOM

56.4" front/55.6" rear

#### SHOULDER ROOM

58.9" front/59.0" rear

#### CARGO VOLUME

68.8 cu. ft. behind front seats  
37.2 cu. ft. behind rear seats

#### FUEL TANK CAPACITY

18.0 gal.

<sup>1</sup>Lincoln Connect with Lincoln Way includes complimentary 5-year subscription for remote features, excluding Wi-Fi hotspot, and activates with vehicle sale date. Subscription requires compatible 4G cellular network and is subject to 4G network availability. Evolving technology/cellular networks may affect future functionality. Message and data rates may apply. Lincoln Way is on the App Store® and Google Play™. Wi-Fi hotspot includes complimentary wireless data trial that begins at time of activation and expires at the end of 3 months or when 3GB of data is used, whichever comes first. For more information, see your Lincoln Dealer. <sup>2</sup>After your trial period ends, SiriusXM audio and data services each require a subscription sold separately, or as a package, by SiriusXM Radio Inc. See SiriusXM Customer Agreement for complete terms at [www.siriusxm.com](http://www.siriusxm.com). All fees and programming subject to change. Trial subscriptions not available in AK and HI. <sup>3</sup>Always wear your safety belt and secure children in the rear seat.

Android Auto, Google, Google Play and other marks are trademarks of Google Inc. Apple, Apple CarPlay, iPhone and Siri are trademarks of Apple Inc., registered in the U.S. and other countries. App Store is a service mark of Apple Inc. Bridge of Weir is a trademark of Bridge of Weir Leather Company Limited. Clari-Fi, QuantumLogic, Revel, Ultima and the Revel logo are trademarks of HARMAN International Industries, registered in the United States and other countries. "HD Radio" and the HD Radio logo are proprietary trademarks of iBiquity Digital Corporation. KICKER, Livin' Loud and the KICKER logo are registered trademarks of Stillwater Designs and Audio. Sirius, XM and all related marks and logos are trademarks of SiriusXM Radio Inc. The Bluetooth word mark is a trademark of the Bluetooth SIG, Inc. THULE is a registered trademark of Thule Sweden AB. VOXXHirschmann is a service mark of VOXX International Corporation.

Comparisons based on competitive models (class is Luxury Midsize Utilities based on Lincoln segmentation), publicly available information and Lincoln certification data at time of release. Vehicles may be shown with optional equipment. Features may be offered only in combination with other options or subject to additional ordering requirements/limitations. Dimensions shown may vary due to optional features and/or production variability. Information is provided on an "as is" basis and could include technical, typographical or other errors. Lincoln makes no warranties, representations, or guarantees of any kind, express or implied, including but not limited to, accuracy, currency, or completeness, the operation of the information, materials, content, availability, and products. Lincoln reserves the right to change product specifications, pricing and equipment at any time without incurring obligations. Your Lincoln Dealer is the best source of the most up-to-date information on Lincoln vehicles.



## 3.7-liter Ti-VCT V6

303 hp @ 5,500 rpm  
278 lb.-ft. of torque @ 4,000 rpm

EPA-estimated fuel economy ratings<sup>1</sup>

**Standard:**  
**FWD**  
17 city/25 hwy/20 combined mpg

**Optional:**  
**AWD**  
16 city/23 hwy/19 combined mpg

## Twin-Turbocharged 2.7-liter V6

335 hp @ 5,500 rpm<sup>2</sup>  
380 lb.-ft. of torque @ 3,000 rpm<sup>2</sup>

EPA-estimated fuel economy ratings<sup>1</sup>

**FWD**  
18 city/25 hwy/20 combined mpg

**AWD**  
17 city/24 hwy/19 combined mpg

**Optional:**  
**Base/Premiere, Select & Reserve**

BASE/PREMIERE		SELECT	RESERVE	
<b>POWER AND HANDLING</b>				
	<b>S</b>			Active Grille Shutters (20" wheels only)
<b>O</b>	<b>O</b>	<b>O</b>		Intelligent all-wheel drive (AWD) includes Lincoln Drive Control featuring Adaptive Suspension
<b>DRIVER-ASSIST TECHNOLOGY</b>				
	<b>A</b>			360-degree camera with Split-View Display
	<b>A</b>			Adaptive cruise control
	<b>A</b>			Adaptive steering
	<b>A</b>	<b>S</b>		BLIS® (Blind Spot Information System) with cross-traffic alert
		<b>A</b>		Enhanced active park assist
		<b>A</b>		Forward Sensing System
		<b>A</b>		Lane-Keeping System with Driver Alert System
		<b>A</b>		Pre-collision assist with pedestrian detection (includes forward collision warning with brake support and active braking)
<b>EXTERIOR</b>				
<b>O</b>	<b>O</b>	<b>O</b>		18" all-season snow-chain-compatible tires (requires and only available with 18" painted aluminum wheels)
		<b>O</b>		21" summer-only tires <sup>3</sup> (requires AWD and 21" premium painted wheels)
		<b>S</b>		Adaptive HID headlamps
		<b>A</b>		Adaptive LED headlamps
<b>S</b>	<b>S</b>			Integrated blind spot sideview mirrors
	<b>S</b>	<b>S</b>		Autofold sideview mirrors with auto-dimming driver's side
	<b>S</b>	<b>S</b>		Configurable LED daytime running lamps
		<b>S</b>		Hands-free liftgate
<b>O</b>	<b>O</b>	<b>O</b>		Satin roof-rack side rails
<b>LINCOLN EXPERIENCES</b>				
	<b>S</b>	<b>S</b>		Ambient lighting illumination sequence
	<b>S</b>	<b>S</b>		LED signature lighting light-up sequence
<b>AUDIO AND NAVIGATION SYSTEMS</b>				
	<b>O</b>	<b>O</b>		Revel® audio system with 13 speakers; includes HD Radio™ Technology
		<b>A</b>		Revel Ultima® audio system with 19 speakers; includes Clari-Fi™ music restoration technology and HD Radio Technology
	<b>A</b>	<b>S</b>		Voice-Activated Touchscreen Navigation System with pinch-to-zoom capability, and integrated SiriusXM® Traffic and Travel Link® with 6-year prepaid subscription <sup>4</sup>
<b>INTERIOR</b>				
<b>S</b>	<b>O</b>	<b>O</b>		Aluminum accents on the center console and door-trim panels
<b>O</b>	<b>O</b>	<b>O</b>		Floor liners
	<b>S</b>	<b>S</b>		Genuine wood accents on the center console and door-trim panels
	<b>A</b>	<b>A</b>		Heated steering wheel
<b>S</b>				Manual-tilt/-telescoping steering column
	<b>S</b>	<b>S</b>		Power-tilt/-telescoping steering column with memory
	<b>O</b>	<b>S</b>		Power panoramic Vista Roof® with power sunshade
<b>O</b>	<b>O</b>	<b>O</b>		Rear Seat Entertainment System <sup>5</sup> by VOXXHirschmann <sup>SM</sup> (not available with Ultra Comfort front seats with Active Motion®)
	<b>S</b>	<b>S</b>		Universal garage door opener

BASE/PREMIERE		SELECT	RESERVE	
<b>SEATING</b>				
		<b>O</b>		Ultra Comfort front seats with 22-way power adjustability including thigh extenders and head restraints, plus Active Motion massage functionality
<b>S</b>				Lincoln Soft-Touch seating surfaces
	<b>S</b>	<b>S</b>		Bridge of Weir Deepsoft™ leather seating
<b>S</b>	<b>S</b>			Heated front seats
		<b>S</b>		Heated and cooled front seats
	<b>A</b>	<b>A</b>		Heated rear outboard seats
<b>SAFETY</b>				
		<b>O</b>		Rear inflatable safety belts in outboard seating positions <sup>6</sup>
<b>PACKAGES</b>				
<b>O</b>	<b>O</b>	<b>O</b>		<b>Cargo Accessories Package:</b> durable cargo area protector and rear bumper protector
	<b>O</b>	<b>O</b>		<b>Cargo Utility Package:</b> Rear Cargo Management System, below-floor molded-plastic storage bins and spare tire cover, reversible cargo mat, 110V/150W AC power outlet, and cargo area tonneau cover
	<b>O</b>	<b>O</b>		<b>Class II Trailer Tow Package:</b> trailer sway control; 3,500 lbs. max.
	<b>O</b>	<b>O</b>		<b>Climate Package:</b> auto high-beam headlamps, heated rear outboard seats, heated steering wheel, rain-sensing windshield wipers, and windshield wiper de-icer
		<b>O</b>		<b>Driver Assistance Package:</b> Lane-Keeping System with Driver Alert System; adaptive cruise control; adaptive steering; and pre-collision assist with pedestrian detection, which includes forward collision warning with brake support and active braking (requires Climate Package)
	<b>O</b>	<b>O</b>		<b>Enhanced Security Package:</b> secondary horn, lockable interior storage, vehicle inclination sensor, and enhanced valet mode
		<b>O</b>		<b>Luxury Package:</b> adaptive LED headlamps and Revel Ultima audio system with 19 speakers; includes HD Radio Technology
	<b>O</b>			<b>Select Plus Package:</b> Voice-Activated Touchscreen Navigation System, and BLIS (Blind Spot Information System) with cross-traffic alert
		<b>O</b>		<b>Technology Package:</b> 360-degree camera with Split-View Display, enhanced active park assist, and Forward Sensing System

### ((SiriusXM))

Enjoy a 6-month All Access trial subscription<sup>4</sup> including commercial-free music, plus sports, news, talk and comedy – it's the freedom of over 150 channels to enjoy from coast to coast. Vehicles equipped with a Navigation System<sup>7</sup> also receive a 6-year prepaid SiriusXM Traffic and Travel Link subscription<sup>4</sup> – the longest of any automobile manufacturer<sup>8</sup> – that gives you detailed traffic and weather information, fuel station locations and prices, sports scores and much more.



By broadcasting a digital signal over traditional radio frequencies, HD Radio Technology<sup>7</sup> gives you up to 3 additional channels – per FM station – of new, local content. It can also display song titles and more, all without the need for a subscription.

<sup>1</sup>Actual mileage will vary. <sup>2</sup>Horsepower and torque ratings achieved with 93-octane fuel. <sup>3</sup>Lincoln does not recommend using summer tires when temperatures drop to approximately 45°F or below (depending on tire wear and environmental conditions) or in snow/ice conditions. If the vehicle must be driven in these conditions, Lincoln recommends using all-season or snow tires. <sup>4</sup>After your trial period ends, SiriusXM audio and data services each require a subscription sold separately, or as a package, by Sirius XM Radio Inc. See SiriusXM Customer Agreement for complete terms at www.siriusxm.com. All fees and programming subject to change. Trial subscriptions not available in AK and HI. <sup>5</sup>Lincoln Licensed Accessory. <sup>6</sup>Always wear your safety belt and secure children in the rear seat. <sup>7</sup>Available feature. <sup>8</sup>Source: May 2017 analysis of satellite data service offers by Sirius XM to full-line luxury brand vehicles offered in the U.S.A.





18" Painted Aluminum  
BASE/PREMIERE / SELECT & RESERVE<sup>1</sup> Available



18" Premium Painted Aluminum  
SELECT



20\* Premium Painted and Bright-Machined 20-Spoke Aluminum  
RESERVE (FWD models; AWD with 3.7-liter)



20" Premium Painted and Bright-Machined 10-Spoke Aluminum  
RESERVE (AWD with 2.7-liter)



21" Premium Painted and Bright-Machined Aluminum  
RESERVE Optional



21" Polished Aluminum  
RESERVE Optional

<sup>1</sup>Replaces standard wheels on Select and Reserve when snow-chain-compatible tires are optioned.





## LINCOLN ACCESSORIES

Express your personal preference in style, convenience and protection:  
Shop the complete collection at [accessories.lincoln.com](http://accessories.lincoln.com)



(A) Lincoln MKX Select shown with molded splash guards, smoked side window deflectors by Lund<sup>®1</sup> and the roof rack crossbar system<sup>2</sup> and roof-mounted bike carrier by THULE<sup>®1,2</sup>

### ELECTRONICS

- ♦ Bullfrog<sup>®</sup> portable Bluetooth<sup>®</sup> speakers by KICKER<sup>®1</sup>
- ♦ Dual Headrest DVD by VOXXHirschmann<sup>™1</sup> (B)
- ♦ NextBase<sup>®</sup> Duo Cinema by VOXXHirschmann<sup>1</sup>
- ♦ Remote start systems
- ♦ Vehicle Security System

### EXTERIOR

- ♦ Full vehicle cover by Covercraft<sup>®1</sup>
- ♦ Racks and carriers by THULE<sup>1,2</sup> (A)
- ♦ Rear bumper protector (D)
- ♦ Side window deflectors by Lund<sup>1</sup> (A)
- ♦ Splash guards (A)
- ♦ Sportz<sup>®</sup> tent by Napier<sup>1</sup>
- ♦ Trailer towing accessories
- ♦ Wheel lock kits

### INTERIOR

- ♦ Ash cup/coin holder
- ♦ Cargo area protector (D)
- ♦ Cargo net
- ♦ Carpeted floor mats
- ♦ First aid and roadside assistance kits by DC Safety<sup>™1</sup>
- ♦ Floor liners (C)
- ♦ In-vehicle safe by Console Vault<sup>®1</sup>
- ♦ Interior cargo cover (D)
- ♦ Soft cargo cooler bag
- ♦ Soft cargo organizers (large and standard sizes)
- ♦ Tablet cradle by Lumen<sup>®1</sup>
- ♦ UVS100<sup>®</sup> Custom Sunscreen by Covercraft<sup>1</sup>

Lincoln Original Accessories will be warranted for whichever provides you the greatest benefit: 24 months/unlimited mileage, or the remainder of your Bumper-to-Bumper 4-year/50,000-mile New Vehicle Limited Warranty. Lincoln Licensed Accessories (LLA) are warranted by the accessory manufacturer's warranty. LLA are designed and developed by the accessory manufacturer and have not been designed or tested to Ford Motor Company engineering requirements. Contact your Lincoln Dealer for details and/or a copy of all limited warranties. <sup>1</sup>Lincoln Licensed Accessory. <sup>2</sup>Consult owner's manual for details on roof-rack load limits.

2018 LINCOLN MKX  
[Lincoln.com](http://Lincoln.com)



# ENJOY THE LUXURY OF PEACE OF MIND



## LINCOLN PROTECT™ EXTENDED SERVICE PLANS

Insist on genuine Lincoln Protect extended service plans, whether you purchase or lease your Lincoln vehicle. Lincoln Protect has a variety of plans to give you peace-of-mind protection whether you want vehicle component or maintenance coverage. Plus, they are fully backed by Lincoln and honored at all Lincoln dealerships in the U.S., Canada and Mexico. When you visit your dealer, insist on genuine Lincoln Protect extended service plans.

## ROADSIDE ASSISTANCE FOR LIFE

We'll be there for you as long as you own your Lincoln – with 24-hour/7-day-a-week assistance nationwide.<sup>1</sup>

## LINCOLN AUTOMOTIVE FINANCIAL SERVICES

Whether you decide to purchase or lease, you'll find a plan designed to fit your individual needs. Visit [LincolnAFS.com](http://LincolnAFS.com) or your Lincoln Showroom to explore your financing options.

## BUMPER-TO-BUMPER WARRANTY

Be assured that your Lincoln is covered for 4 years/50,000 miles.<sup>2</sup>

## LUXURY VALIDATION

In order to provide a highly refined ownership experience, the Lincoln Luxury Validation Center meticulously inspects the materials, craftsmanship, fit and finish, and function of each Lincoln MKX that leaves our manufacturing facility. This process ensures that it meets Lincoln standards in every way, before you see that it meets yours.



Discover more at [Lincoln.com](http://Lincoln.com)

