



LINCOLN NAUTILUS®



2022

**When the journey  
is the destination.**



At the place where exhilarating performance and soothing luxury meet is where you'll discover the 2022 Lincoln Nautilus® SUV. It's your personal sanctuary – a comforting space filled with thoughtful technologies designed to help make every journey one to remember.



YOUR WAY, EFFORTLESSLY



Make your drive a seamless and serene experience. With the Lincoln Way™ App,<sup>1</sup> you are granted access to essential information about your vehicle. What does this afford you? Peace of mind, and a better sense of connection when you're away from your vehicle. Welcome to an effortless ownership experience. Welcome to the Lincoln Way.

<sup>1</sup>Lincoln Way App, compatible with select smartphone platforms, is available via download. Message and data rates may apply.

THE LINCOLN WAY APP

Enhance your ownership experience with the Lincoln Way™ App.<sup>1</sup> With a number of services and benefits you can take advantage of, you'll enjoy more time to spend on what matters most.

- Connect and control your vehicle from virtually anywhere with complimentary remote features including start/stop, lock/unlock and scheduled starts.<sup>2</sup>
- Available Phone As A Key<sup>3</sup> lets your smartphone act as a key fob so you won't need to carry anything else except your phone to take a trip.
- Vehicle Details make monitoring your vehicle's health, checking oil life and tire pressure effortless.
- Simply schedule your Lincoln Priority Service by setting a date, time and location for the Lincoln valet to pick up your vehicle and leave a Lincoln Loaner.<sup>4</sup>
- Earn Points toward Lincoln Priority Service and exclusive experiences with Lincoln Access Rewards.<sup>5</sup>

<sup>1</sup>Lincoln Way App, compatible with select smartphone platforms, is available via download. Message and data rates may apply. <sup>2</sup>Lincoln Connect™, the Lincoln Way App, and complimentary Connected Service are required for remote features (see Lincoln Way Terms for details). Connected service and features depend on compatible AT&T network availability. Evolving technology/cellular networks/vehicle capability may limit functionality and prevent operation of connected features. Connected service excludes Wi-Fi hotspot. <sup>3</sup>Requires feature activation. Not compatible with all mobile phones. <sup>4</sup>Complimentary Lincoln Pickup & Delivery service is available for 2017 model year and newer Lincoln vehicles with the 4-year/50,000-mile New Vehicle Limited Warranty (whichever comes first). Owners of 2016 and prior model year vehicles may arrange for the service at a cost. Mileage limitations may apply. <sup>5</sup>See your dealer for details.





**Brighten your presence,  
everywhere you go.**



Each time you approach your Lincoln Nautilus® SUV, you'll receive a welcoming embrace. The alluring lines, the provocative stance, the dynamic signature lighting. The backlit door handles extend a hand to yours, while the inviting glow of the Lincoln logo welcome mats provides reassurance that you have arrived.

The available Ultimate Package is there to light your way. Enjoy an adaptive illumination system that will help you find your way in the dark. The full LED multi-projector headlamps provide a broad field of brilliant light, automatically shifting their beam in the direction of a curve for better visibility while you're traveling at night on winding roads.



BEAUTY IS REVEALED



**Discovery comes  
from within.**

Simply enter your Lincoln Nautilus® SUV, and you'll see why the luxurious interior can be your very own peaceful oasis. Take in the stunning 13.2" horizontal center stack screen, which you can also control right from the leather-wrapped steering wheel with available heat. Enjoy your favorite podcast or relax with soothing music while your phone charges in the media bin with the available wireless charging pad! It's all here.

It's all for you. Travel to your destination with the available Ultra Comfort front seats with 22-way power adjustability, including power thigh extenders and power head restraints, plus Active Motion® massage functionality. It's total tranquility.

\*Qi wireless charging may not be compatible with all mobile phones.



A SPIRIT OF RELAXATION

Take pleasure in its refined performance.



Each available engine is paired with an 8-speed automatic transmission designed to provide the right gear at the right time. The result is a refined drive that allows you to simply enjoy the journey.



#### TURBOCHARGED

This is the foundation of the turbocharged Lincoln Nautilus® engine lineup. Wrap your hands around the wheel, and feel the power of brilliant engineering. It's where exhilaration begins.

2.0-LITER I-4  
250 HORSEPOWER<sup>1</sup>  
280 LB.-FT. OF TORQUE<sup>1</sup>

#### TWIN-TURBOCHARGED

For a swift surge of power on demand, Nautilus Reserve models offer you an available twin-turbocharged 2.7-liter V6 engine. It's sophisticated inspiration at the ready.

2.7-LITER V6  
335 HORSEPOWER<sup>1</sup>  
380 LB.-FT. OF TORQUE<sup>1</sup>

<sup>1</sup>Horsepower and torque ratings based on premium fuel per SAE J1349® standard. Your results may vary. Horsepower and torque are independent attributes and may not be achieved simultaneously.

# Rise above in luxurious comfort.

Within each Lincoln Nautilus® SUV lies a spacious sanctuary. A beautiful, welcoming place where flowing lines and carefully curated materials nurture your serenity. Step inside and discover the finely crafted details designed to help put your body and mind at ease.



VOICE-ACTIVATED SYNC® 4



#### CONVERSATIONAL VOICE CONTROL

Cloud-based connectivity allows you to speak to SYNC 4<sup>1</sup> with Enhanced Voice Recognition in your normal conversational style. Select preferred "wake" words, and engage the system with a simple phrase such as "Hello, Lincoln." Designed to quickly offer available navigational routes and more, the system even lets you compose and send texts by voice.<sup>1</sup>

#### CLOUD-CONNECTED NAVIGATION

The available Connected Built-In Navigation System<sup>2</sup> with 3-year trial offers you the latest weather, live traffic, construction zones and parking availability. Plus, features like business hours, ratings and Points-Of-Interest information.

#### DIGITAL OWNER'S MANUAL

An easy-to-search, cloud-based feature, the Digital Owner's Manual<sup>1</sup> allows you to search by key word or visual images, or even view how-to videos for many vehicle features on the SYNC 4 touchscreen while you're in Park.

#### WIRELESS PHONE CONNECTION

AppLink<sup>®</sup> with App Catalog lets you access a number of apps from your wirelessly connected phone using just your voice. You'll also enjoy wireless compatibility with Apple CarPlay<sup>®3</sup> and Android Auto.<sup>3</sup>

#### LINCOLN ENHANCE SOFTWARE UPDATES

SYNC 4 Technology and your Nautilus are designed to evolve through the use of Lincoln Enhance software updates. They're easy wireless updates for features, quality, experiences, capability and convenience. Many will be virtually invisible to you, while others can be scheduled on your terms, and all can take place from the comfort of home.

<sup>1</sup>Don't drive while distracted or while using handheld devices. Use voice-operated systems when possible. Some features may be locked out while the vehicle is in gear. Not all features are compatible with all phones. <sup>2</sup>Navigation services require SYNC 4 and Lincoln Connect™ complimentary connect service and the Lincoln Way™ App (see Lincoln Way Terms for details). Eligible vehicles receive a complimentary 3-year trial of navigation services that begins on the new vehicle warranty start date. Customers must unlock the navigation service trial by activating the eligible vehicle with a Lincoln Way member account. If not subscribed by the end of the complimentary period, the connected navigation service will terminate, and the system will revert to embedded offline navigation. Connected service and features depend on compatible AT&T network availability. Evolving technology/cellular networks/vehicle capability may limit functionality and prevent operation of connected features. Lincoln Way App, compatible with select smartphone platforms, is available via download. Message and data rates may apply. <sup>3</sup>Requires phone with active data service and compatible software. SYNC 4 does not control 3rd-party products while in use. 3rd parties are solely responsible for their respective functionality.



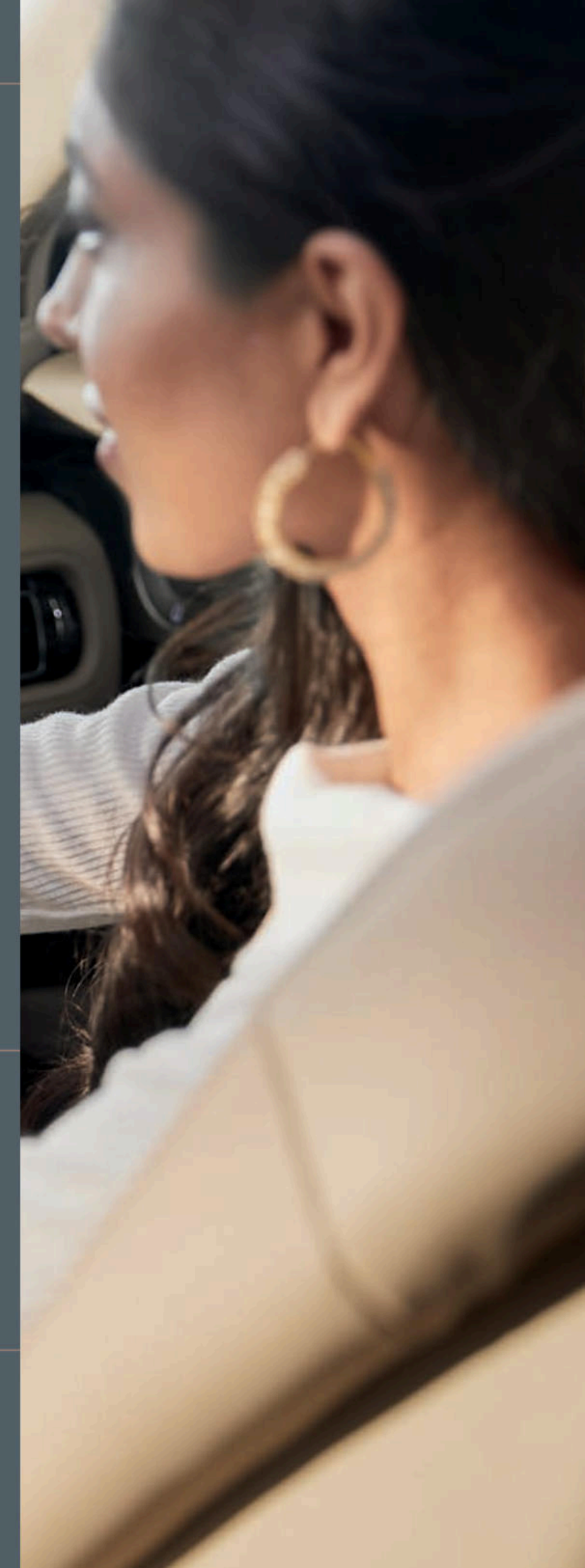
#### ENGAGE WITH DYNAMIC AUDIO

The available Revel® and Revel Ultima Audio Systems deliver finely crafted sound in full. With personalized listening modes like "Stereo," "Audience" and "On Stage," you have the freedom to experience different levels of sound immersion. Outstanding, multi-dimensional sound is courtesy of 13 carefully placed speakers in the Revel system and 19 in the Revel Ultima system. Factor in the advanced cabin correction tuning, QuantumLogic® Surround sound technology and Revel Waveguides, and the level of precision isn't just heard – it's felt.



#### SOUND THAT STAYS WITH YOU

With a variety of premium entertainment, innovative features that make discovery easy, and a personalized experience for every driver, SiriusXM® with 360L<sup>1</sup> is unlike any other entertainment experience you've had in a vehicle. Plus, with a Platinum Plan trial or paid subscription, drivers can enjoy the best of SiriusXM in the vehicle, on your phone with the SiriusXM app, and at home on compatible connected devices.



The available wireless charging pad<sup>2</sup> lets you keep devices charged clutter-free – without any cords.



Lincoln Connect™<sup>3</sup> enables a 4G LTE Wi-Fi hotspot connection for up to 10 devices at once.<sup>4</sup>

<sup>1</sup>Trial length and service availability may vary by model, model year or trim. Radio features, content and display may vary by vehicle. Some features may not be available while driving. Your trial subscription will automatically stop at the end of your trial period. Subscriptions offered and sold separately by SiriusXM for continued use after trial. Services are subject to the SiriusXM Customer Agreement and Privacy Policy available at [siriusxm.com](http://siriusxm.com) which includes complete terms and how to cancel which includes online methods or calling 1-866-635-2349. All fees, content and features are subject to change. <sup>2</sup>Qi wireless charging may not be compatible with all mobile phones. <sup>3</sup>Lincoln Connect, the Lincoln Way App, and complimentary Connected Service are required for remote features (see Lincoln Way Terms for details). Connected service and features depend on compatible AT&T network availability. Evolving technology/cellular networks/vehicle capability may limit functionality and prevent operation of connected features. Connected service excludes Wi-Fi hotspot. <sup>4</sup>Don't drive distracted or while using handheld devices. Use voice controls.

Designed to offer reassurance when you need it. Nautilus driver-assistance features<sup>1</sup> balance the gentle push and strong alert to help you in your travels.

#### STANDARD LINCOLN CO-PILOT360™ 1.0

- Auto High-Beam Headlamps
- Blind Spot Information System
- Cross-Traffic Alert
- Lane-Keeping System:  
includes Lane-Keeping Aid, Lane-Keeping Alert and Driver Alert System
- Pre-Collision Assist with Automatic Emergency Braking:  
includes Pedestrian Detection, Forward Collision Warning and Dynamic Brake Support
- Rear Parking Sensors
- Rear View Camera with Wash



A little extra assistance can go a long way. With the available Lincoln Co-Pilot360 1.0 Plus, you have additional features on hand that can enhance your drive in order to help you feel confident and aware.<sup>1</sup>

#### AVAILABLE LINCOLN CO-PILOT360 1.0 PLUS

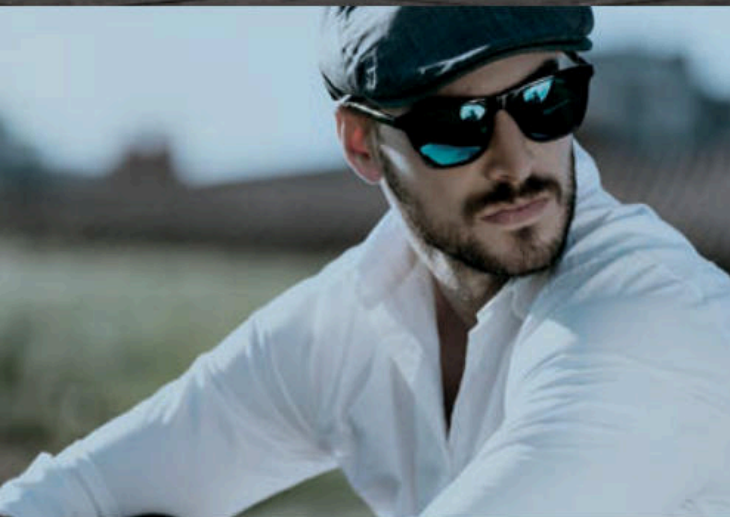
- 360-Degree Camera with Rear Camera Wash
- Enhanced Active Park Assist
- Evasive Steering Assist
- Forward/Side/Rear Parking Sensors
- Adaptive Cruise Control with Stop-and-Go and Lane Centering Assist
- Distance Indication and Alert

<sup>1</sup>Driver-assist features are supplemental and do not replace the driver's attention, judgment and need to control the vehicle. It does not replace safe driving. See Owner's Manual for details and limitations.

#### CONFIDENCE COMES STANDARD

When you're behind the wheel of your Lincoln Nautilus® SUV, you'll feel a sense of command. Perhaps it's the electric power-assisted steering (EPAS) that helps deliver maneuverability and responsive handling. Or it could be the available Intelligent all-wheel drive that uses sensors to constantly monitor your grip on the road. The result is greater confidence and peace of mind.

THE MONOCHROMATIC PACKAGE



Give your Lincoln Nautilus® SUV the understated elegance of the available Monochromatic Package. Choose from Infinite Black and Asher Gray exterior colors with exclusive black aluminum wheels, stylish accents and a unique body-color upper mesh grille.



AN ELEVATED REFINEMENT

INTERIOR CRAFTSMANSHIP

While creating each distinctive Lincoln Nautilus® interior environment, our designers commit themselves to craftsmanship that goes beyond what can be seen. They pour their passion for comforting elegance into each collection of materials, accent trims, and colors – all to ensure every Nautilus provides our signature feeling of sanctuary.

Ebony or Sandstone<sup>1</sup>  
Nautilus 1-9

Linear Brushed Aluminum

Medium Slate  
Nautilus Reserve 3-7

Linear Brushed Aluminum

Ebony  
Nautilus Reserve 1-9

Santos Rosewood

Ebony  
Nautilus Reserve 1-9

Linear Brushed Aluminum  
(Optional)

Sandstone  
Nautilus Reserve 1-9

Espresso Ash Swirl Open Pore Wood

Ebony/Roast  
Nautilus Reserve 1-6, 8, 9

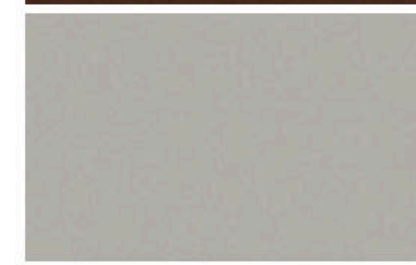
Santos Rosewood

Ebony/Roast  
Nautilus Reserve 1-6, 8, 9

Linear Brushed Aluminum  
(Optional)



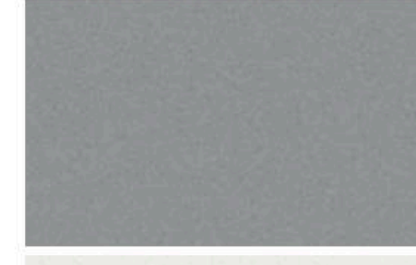
1. Bronze Smoke Metallic<sup>2</sup>



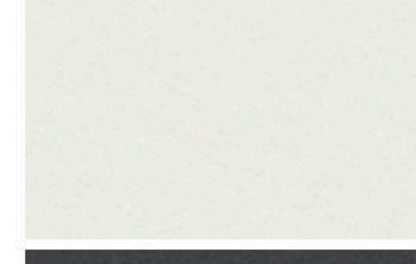
2. Ceramic Pearl Metallic Tri-coat<sup>2</sup>



3. Infinite Black Metallic



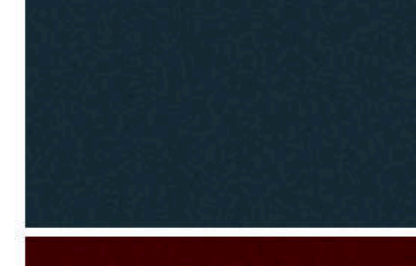
4. Silver Radiance Metallic



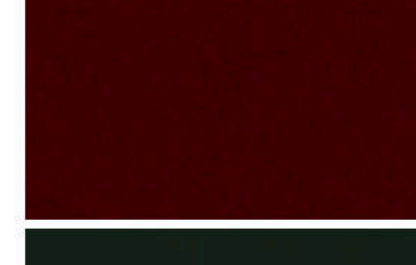
5. Pristine White Metallic Tri-coat<sup>2</sup>



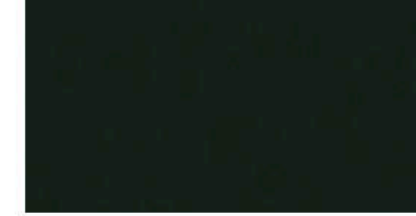
6. Asher Gray Metallic



7. Flight Blue Metallic<sup>2</sup>



8. Burgundy Velvet Metallic Tinted Clearcoat<sup>2</sup>



9. Gilded Green Metallic

Exterior and interior colors shown are representative only.

<sup>1</sup>Lincoln Soft Touch Seats standard on Nautilus. <sup>2</sup>Additional charge.

## STANDARD FEATURES

### PERFORMANCE & HANDLING

- Electric parking brake
- Electric power-assisted steering (EPAS)
- Front-wheel drive (FWD)
- Power disc brakes with Anti-Lock Brake System (ABS)
- Tire inflator and sealant kit
- Torque Vectoring Control
- LINCOLN CO-PILOT360™ 1.0
- Auto High-Beam Headlamps
- Blind Spot Information System
- Cross-Traffic Alert
- Lane-Keeping System (includes Lane-Keeping Aid, Lane-Keeping Alert and Driver Alert System)
- Pre-Collision Assist with Automatic Emergency Braking (AEB) (includes Pedestrian Detection, Forward Collision Warning and Dynamic Brake Support)
- Rear Parking Sensors
- Rear View Camera with Wash

### DRIVER-ASSIST TECHNOLOGY

- Auto Hold
- Autolamp (Automatic On/Off Headlamps)
- Hill Start Assist
- Post-Collision Braking
- INTERIOR
- 12.3" configurable LCD instrument cluster
- 12V powerpoints (3)
- 60/40 split-fold-flat rear seat with recline and EasyFold® seat back release
- Active Noise Control
- Dual-zone electronic automatic temperature control
- Leather-wrapped steering wheel
- Memory feature for driver's seat
- Piano Key Shifter
- Power windows with one-touch-up/-down and global open/close for all 4 windows
- Remote Start System
- Smart-charging ports for rear row (1 USB-A and 1 USB-C)

### EXTERIOR

- Acoustic-laminate windshield and front-door glass
- LED headlamps with dynamic signature lighting
- Lincoln Embrace: Lincoln Approach Detection System, Lincoln Signature Lighting, Lincoln logo illuminated welcome mats, and LED-illuminated exterior door handle pockets
- Power-adjustable, autofold, heated, body-color sideview mirrors with integrated LED turn signal indicators
- Power liftgate

### CONNECTIVITY & ENTERTAINMENT

- SYNC® 4 with Enhanced Voice Recognition, 13.2" LCD capacitive touchscreen, conversational voice command recognition, cloud connectivity, wireless phone connection, 911 Assist®, AppLink® with App Catalog, wireless Apple CarPlay® compatibility, wireless Android Auto™ compatibility, Digital Owner's Manual, and smart-charging ports (1 USB-A and 1 USB-C)
- Lincoln Connect™<sup>1</sup> with 4G LTE Wi-Fi hotspot capability<sup>2</sup>
- Lincoln Premium Audio System with AM/FM stereo and 10 speakers including a subwoofer
- SiriusXM® with 360L with 3-month Platinum Plan trial subscription<sup>3</sup>

### SAFETY & SECURITY

- Personal Safety System™ for driver and front passenger with dual-stage front airbags<sup>4</sup>
- Driver's knee airbag,<sup>5</sup> glove-box-door-integrated knee airbag,<sup>4</sup> front-seat side airbags,<sup>4</sup> and Safety Canopy® side-curtain airbags<sup>4</sup> with roll-fold technology and rollover sensor AdvanceTrac™ with RSC® (Roll Stability Control™)
- Intelligent Access with push-button start
- LATCH (Lower Anchors and Tether Anchors for Children)
- MyKey® technology to help encourage responsible driving
- Perimeter alarm
- SecuriCode® invisible keypad
- SecuriLock® Passive Anti-Theft System
- SOS Post-Crash Alert System™
- Tire Pressure Monitoring System (TPMS; excludes spare, when equipped)

## NAUTILUS®

### NAUTILUS RESERVE

- Standard ○ Optional ▲ Available
- Turbocharged 2.0-liter I-4 with Auto Start-Stop Technology  
250 hp @ 5,500 rpm<sup>5</sup> 280 lb.-ft. of torque @ 3,000 rpm<sup>5</sup>  
8-speed automatic transmission
- Twin-Turbocharged 2.7-liter V6 with Auto Start-Stop Technology  
335 hp @ 5,500 rpm<sup>5</sup> 380 lb.-ft. of torque @ 3,250 rpm<sup>5</sup>  
8-speed SelectShift® automatic transmission with paddle shifters and Adaptive Suspension  
Requires Intelligent all-wheel drive (AWD) with AWD Disconnect
- Intelligent all-wheel drive (AWD) with AWD Disconnect
- Lincoln Soft Touch seats
- Manual-tilt/-telescoping steering column
- ▲ Connected Built-In Navigation System with pinch-to-zoom capability, live traffic, predictive destinations, route guidance and 3-year trial<sup>6</sup>
- ▲ Power-tilt/-telescoping steering column with memory
- ▲ Universal garage door opener
- Adaptive LED headlamps with dynamic LED signature lighting
- Ambient lighting
- Auto-dimming driver's sideview mirror
- Enhanced Security Package: enhanced valet mode, lockable interior storage, secondary horn and vehicle inclination sensor
- Heated and ventilated front seats
- Heated, premium leather-wrapped steering wheel
- Heated rear outboard seats
- Illuminated front door-sill scuff plates
- Memory feature for sideview mirrors
- Power, panoramic Vista Roof® with power sunshade
- Premium leather-trimmed seats
- Rain-Sensing Windshield Wipers
- Wireless charging pad
- ▲ Hands-free liftgate
- ▲ LED fog lamps
- ▲ Revel® Audio System with 13 speakers; includes HD Radio™ Technology

### EPA-ESTIMATED FUEL ECONOMY RATINGS<sup>7</sup>

		CITY / HWY / COMBINED		
Turbocharged 2.0-liter I-4	FWD	21	26	23 MPG
	AWD	20	25	22 MPG
Twin-Turbocharged 2.7-liter V6	AWD	19	25	21 MPG

## NAUTILUS

### NAUTILUS RESERVE

- Equipment Collection 201A: Lincoln Co-Pilot360 1.0 Plus, hands-free liftgate, Phone As A Key,<sup>8</sup> Revel Audio System with 13 speakers, and 20" premium painted bright-machined aluminum wheels
- Equipment Collection 202A: Cargo Utility Package, Class II Trailer Tow Package, Adaptive Suspension; Phone As A Key,<sup>8</sup> hands-free liftgate, Lincoln Co-Pilot360 1.0 Plus, and Ultimate Package: 21" premium painted bright-machined aluminum wheels; full LED multi-projector headlamps with Adaptive Static Bending Lighting and Wiper-Activated Headlamps; LED fog lamps; Revel Ultima Audio System with 19 speakers and HD Radio Technology
- Premium Package: 18" premium painted bright-machined aluminum wheels; power-tilt/-telescoping steering column with memory; universal garage door opener; and Connected Built-In Navigation System with pinch-to-zoom capability, live traffic, predictive destinations, route guidance and 3-year trial<sup>6</sup>
- Cargo Utility Package: Rear Cargo Management System, below-floor molded-plastic storage bins and spare tire cover, reversible cargo mat, 110V/150W AC power outlet, and interior cargo cover
- Class II Trailer Tow Package: trailer hitch receiver and Trailer Sway Control; 3,500 lbs. max.<sup>9</sup> (requires Cargo Utility Package)
- Lincoln Co-Pilot360 1.0 Plus: 360-Degree Camera with Rear Camera Wash, Enhanced Active Park Assist, Evasive Steering Assist, Forward/Side/Rear Parking Sensors, Adaptive Cruise Control with Stop-and-Go and Lane Centering Assist, and Distance Indication and Alert
- Luxury Package: hands-free liftgate, Phone As A Key,<sup>8</sup> Revel Audio System with 13 speakers (200A only)
- Monochromatic Package: 20" black aluminum wheels; body-color side badging with chrome lettering; body-color lower grille with accent trim; and unique body-color upper mesh grille (available exclusively with Infinite Black Metallic or Asher Gray Metallic)
- Lincoln Play with DVD (Rear-Seat Entertainment System with 2 pairs of wireless headphones)<sup>10</sup>
- Ultra Comfort front seats with 22-way power adjustability, including thigh extenders and head restraints, plus Active Motion® massage functionality (201A or 202A only)
- Cargo Accessories and Mat Package: floor liners, rubber cargo mat and rear bumper load protector (deletes standard carpeted floor mats)
- Cargo Accessories and Mat Package: floor liners, rubber cargo mat and rear bumper load protector (includes standard carpeted floor mats)<sup>11</sup>
- Compact spare wheel and tire
- Engine block heater
- Satin roof-rack side rails
- WHEELS
- A: 18" premium painted aluminum
- ▲ ● B: 18" premium painted bright-machined aluminum
- C: 20" premium painted bright-machined aluminum
- ▲ D: 20" black aluminum
- E: 21" premium painted bright-machined aluminum

## LINCOLN ACCESSORIES

### ELECTRONICS

- Dash cam systems<sup>10</sup>
- Remote Start System
- Vehicle security systems
- EXTERIOR
- Full vehicle cover<sup>10</sup>
- Racks and carriers<sup>10,12</sup>
- Rear bumper protector
- Side window deflectors<sup>10</sup>
- Splash guards
- Sportz® tent<sup>10</sup>
- Trailer towing accessories
- Wheel lock kits

### INTERIOR

- Ash cup/coin holders
- Battery jump-start system<sup>10</sup>
- Cargo area protector
- Cargo net
- Carpeted floor mats
- Custom UVS100® sunscreen<sup>10</sup>
- First aid and roadside assistance kits<sup>10</sup>
- Floor liners
- In-vehicle safe<sup>10</sup>
- Interior cargo cover
- Mini-fridge, portable<sup>10</sup>
- Soft cargo cooler bag
- Soft cargo organizers (large and standard sizes)

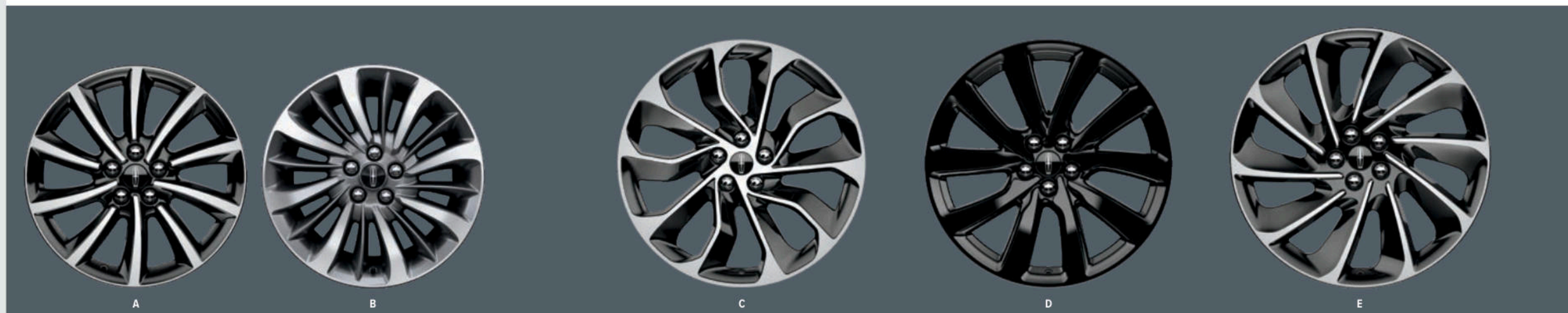
Shop the complete collection at [accessories.lincoln.com](https://accessories.lincoln.com)

## DIMENSIONS

- Wheelbase 112.2"
- Length 190.0"
- Height 66.2"
- Width 86.1" includes mirrors
- 78.7" mirrors folded
- Head room 39.9" front / 39.2" rear
- Leg room 42.8" front (max.) / 39.6" rear
- Hip room 56.4" front / 55.6" rear
- Shoulder room 58.9" front / 59.0" rear
- Cargo volume (cu. ft.) 68.8 behind front seats
- 37.2 behind rear seats
- Fuel tank 18.0 gal.



Scan this code to build and price a new Nautilus. Data rates may apply.



Lincoln Original Accessories will be warranted for whichever provides you the greatest benefit: 24 months/unlimited mileage, or the remainder of your Bumper-to-Bumper 4-year/50,000-mile (whichever comes first) New Vehicle Limited Warranty. Lincoln Licensed Accessories (LLA) are warranted by the accessory manufacturer's warranty. LLA are designed and developed by the accessory manufacturer and have not been designed or tested to Ford Motor Company engineering requirements. Contact your Lincoln Dealer for details and/or a copy of all limited warranties.

Lincoln, Lincoln Nautilus and the Lincoln emblem, 911 Assist, Active Motion, AdvanceTrac, AppLink, EasyFold, Lincoln Access Rewards, Lincoln Co-Pilot360, Lincoln Connect, Lincoln Protect, Lincoln Way, MyKey, Personal Safety System, Roll Stability Control, RSC, Safety Canopy, SecuriCode, SecuriLock, SelectShift, SOS Post-Crash Alert System, SYNC, Vista Roof and related marks are trademarks of Lincoln Motor Company.

Android Auto is a trademark of Google LLC. Apple CarPlay is a trademark of Apple Inc., registered in the U.S. and other countries. "HD Radio" and the HD Radio logo are proprietary trademarks of iBiquity Digital Corporation. QuantumLogic, Revel and the Revel logo are trademarks of HARMAN International Industries, registered in the United States and other countries. SiriusXM, Pandora and all related logos are trademarks of Sirius XM Radio Inc. and its respective subsidiaries.

<sup>1</sup>At purchase, the Lincoln Connect modem is connected and sending vehicle data (e.g., diagnostics) to Lincoln. To disable, or for more information, see in-vehicle connectivity settings. Learn more at [www.ConnectedLincoln.com](https://www.ConnectedLincoln.com). Lincoln Connect, Lincoln Way App and complimentary Connected Service are required for remote features (see Lincoln Way Terms for details). Connected service and features depend on compatible AT&T network availability. Evolving technology/cellular networks/vehicle capability may limit functionality and prevent operation of connected features. Connected service excludes Wi-Fi hotspot. <sup>2</sup>Wi-Fi hotspot includes complimentary

wireless data trial that begins upon AT&T activation and expires at the end of 3 months or when 3GB of data is used, whichever comes first. To activate, go to [www.att.com/lincoln](https://www.att.com/lincoln). <sup>3</sup>Trial length and service availability may vary by model, model year or trim. Radio features, content and display may vary by vehicle. Some features may not be available while driving. Your trial subscription will automatically stop at the end of your trial period. Subscriptions offered and sold separately by SiriusXM for continued use after trial. Services are subject to the SiriusXM Customer Agreement and Privacy Policy available at [siriusxm.com](https://siriusxm.com) which includes complete terms and how to cancel which includes online methods or calling 1-866-635-2349. All fees, content and features are subject to change. <sup>4</sup>Always wear your safety belt and secure children in the rear seat. <sup>5</sup>Horsepower and torque ratings based on premium fuel per SAE J1349® standard. Your results may vary. Horsepower, torque and towing are independent attributes and may not be achieved simultaneously. <sup>6</sup>Navigation services require SYNC 4 and Lincoln Connect, complimentary connect service and the Lincoln Way App (see Lincoln Way Terms for details). Eligible vehicles receive a complimentary 3-year trial of navigation services that begins on the new vehicle warranty start date. Customers must unlock the navigation service trial by activating the eligible vehicle with a Lincoln Way member account. If not subscribed by the end of the complimentary period, the connected navigation service will terminate, and the system will revert to embedded offline navigation. Connected service and features depend on compatible AT&T network availability. Evolving technology/cellular networks/vehicle capability may limit functionality and prevent operation of connected features. Lincoln Way App, compatible with select smartphone platforms, is available via download. Message and data rates may apply. <sup>7</sup>Actual mileage will vary. <sup>8</sup>Requires feature activation. Not compatible with all mobile phones. <sup>9</sup>Max. towing varies based on cargo, vehicle configuration, accessories and number of passengers. <sup>10</sup>Lincoln Licensed Accessory. <sup>11</sup>Do not place additional floor mats or any other covering on top of the original floor mats. <sup>12</sup>Consult Owner's Manual for details on roof-rack load limits.



Scan this code to request your virtual Lincoln Showcase tour.  
Data rates may apply.

## LINCOLN SHOWCASE

Experience an exclusive, all-virtual vehicle tour from the comfort of your home. Lincoln Showcase is a great way to get to know your Lincoln vehicle on a whole new level. Explore new technologies and features remotely with a knowledgeable product specialist who can answer any question you may have.

## LINCOLN PROTECT® EXTENDED SERVICE PLANS

Whether you purchase or lease your Lincoln, Lincoln Protect offers peace of mind with a variety of plans for vehicle component and maintenance coverage. Plans fully backed by Lincoln are honored at all Lincoln dealerships in the U.S., Canada and Mexico.

## ROADSIDE ASSISTANCE FOR LIFE

We'll be there for you as long as you own your Lincoln – with 24-hour/7-day-a-week assistance nationwide. Lifetime coverage provided for the original owner only; second and subsequent owners receive coverage for 6 years/70,000 miles (whichever comes first) from original date of sale. Please see your dealer for complete details.

## LINCOLN AUTOMOTIVE FINANCIAL SERVICES

Whether you decide to purchase or lease, you'll find a plan designed to fit your individual needs. Visit [Lincoln.com/finance](http://Lincoln.com/finance) or your Lincoln Showroom to explore your financing options.

## NEW VEHICLE LIMITED WARRANTY

Your new Lincoln has the following coverage: 4-year/50,000-mile bumper-to-bumper coverage (whichever comes first), 6-year/70,000-mile powertrain coverage (whichever comes first), 5-year/60,000-mile safety restraint coverage (whichever comes first), and 5-year/unlimited-mile corrosion perforation (aluminum panels do not require perforation) coverage (whichever comes first). Please ask your dealer for a copy of these limited warranties.

## LINCOLN MOTOR COMPANY INSURE

Insurance that lets you earn discounts for safe driving, offering a maximum discount of 40% off your auto insurance. Lincoln Motor Company Insure works with your 2022 model-year Lincoln to gauge your driving habits and calculate a discount based on how you drive. Visit [www.lincolnmotorcompanyinsure.com](http://www.lincolnmotorcompanyinsure.com) to learn more.

American Road Services Company LLC (a Lincoln affiliate) is the licensed insurance agency offering Lincoln Motor Company Insure, which is underwritten by Nationwide Mutual Insurance Company and affiliates. Home Office: Columbus, OH. Lincoln Motor Company and Lincoln Automotive Financial Services are not insurance companies or agents. Subject to underwriting guidelines, review and approval. Details and availability varies; program criteria differ in California. Discounts do not apply to all coverage elements; actual savings vary by state, coverage selections, rating factors and policy changes.

Comparisons based on competitive models (class is Premium Medium Utility), publicly available information and Lincoln certification data at time of release. Vehicles may be shown with optional equipment. Features may be offered only in combination with other options or subject to additional ordering requirements/limitations. Dimensions shown may vary due to optional features and/or production variability. Information is provided on an "as is" basis and could include technical, typographical or other errors. Lincoln makes no warranties, representations, or guarantees of any kind, express or implied, including but not limited to, accuracy, currency, or completeness, the operation of the information, materials, content, availability, and products. Lincoln reserves the right to change product specifications, pricing and equipment at any time without incurring obligations. Your Lincoln Dealer is the best source of the most up-to-date information on Lincoln vehicles.