



# MAZDA CX-5









Can the soul of a car company touch the heart of its drivers?

We believe so.

And have made it our pursuit.

Our passion.

Each day it inspires us.

To be inventive.

Courageous.

Thoughtful.

And guides us.

To acknowledge the driver

Every step along the way.

Forming a unique bond between human and machine.

Over the last 100 years, we've been putting ingenuity before conventional thinking.

Expressed on the road.

And on the track.

Using technology to enhance our touch. Not replace it.

To not just build a car.

But create a connection.

One that begins the moment you see it.

And grows stronger every time you get behind the wheel.

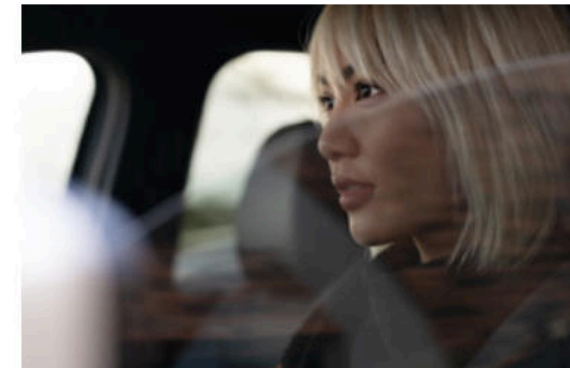
Elevating each drive into an enriching experience.

Making you feel alive.





Mazda CX-5 2.5 Turbo Signature shown in available Snowflake White Pearl Mica



## MAZDA CX-5

As beautiful as it is powerful, the Mazda CX-5 represents a bold articulation of our Kodo design. With shifting light reflecting off its fluid curves, the CX-5 radiates power and grace. In fact, everything about the CX-5—from its meticulously crafted interior to its standard i-Activ AWD®—rises above the expected. The CX-5 surrounds you in a refined elegance and provides an elevated driving performance that truly transcends the ordinary.

## ENGINEERED WITH A SINGLE FOCUS: YOU.

For decades, we've studied the human body: how it moves, sensations of touch, sound and sight, muscle and skeletal structure. Every consideration has been made so the 2022 Mazda CX-5's intuitive interior feels as if it were built just for you. Even the seats are shaped to help you achieve a more comfortable and relaxed posture, helping you feel steadier and more balanced as you maneuver through twists and turns on the road.

We took that same approach with the driving experience. The chassis and powertrain are tuned to the human body's natural sense of motion, resulting in a car that intuitively responds to your inputs to create the effortless feeling of being in control. This is the human-centric design philosophy known as *Jinba Ittai*—horse and rider as one. You feel as though your Mazda is an extension of your body. To leave you feeling energized. Rejuvenated. You, at one with your Mazda.





## A BALANCE OF POWER

From the engine and transmission to the chassis and beyond, we've designed every aspect of our vehicles to be powerful yet efficient<sup>1</sup> through an approach we call Skyactiv® Technology. In the CX-5, the available Skyactiv®-G 2.5 Turbo engine delivers up to 256 hp<sup>2</sup> plus you can dial up its responsiveness simply by engaging Sport mode. And with up to 320 lb-ft of available torque,<sup>2</sup> it offers power you can feel—particularly at low rpm. So you'll enjoy effortless acceleration every time you merge onto the freeway or pass other vehicles.

In addition, the CX-5 makes available our new Mazda Intelligent Drive Select (Mi-Drive) technology, which allows you to change drive modes to match the driving situation with the flip of a switch, putting more power and control back in your hands.

<sup>1</sup> Based on EPA estimates for 2022 Mazda CX-5 models with available turbo engine, 22 city/27 highway/24 combined MPG. Actual results will vary.  
<sup>2</sup> 256 hp and 320 lb-ft of torque with 93 octane fuel. 227 hp and 310 lb-ft of torque with 87 octane fuel.

## A NEW STANDARD OF CONTROL

To extend our Jinba Ittai philosophy—car and driver as one—we engineered a unique all-wheel-drive system: i-Activ AWD.<sup>®</sup> Now standard across all 2022 CX-5 models, this sophisticated technology uses real-time vehicle dynamics modeling to help monitor traction loss and sends torque to the tires that can use it best. This system works in tandem with G-Vectoring Control Plus, which can automatically adjust engine torque and subtly control the brakes at each individual wheel, providing a more precise steering response and closer connection between you and your CX-5.



Mazda CX-5 2.5 Turbo shown in available Soul Red Crystal Metallic



## MORE CONFIDENCE FOR A MORE INSPIRING DRIVE

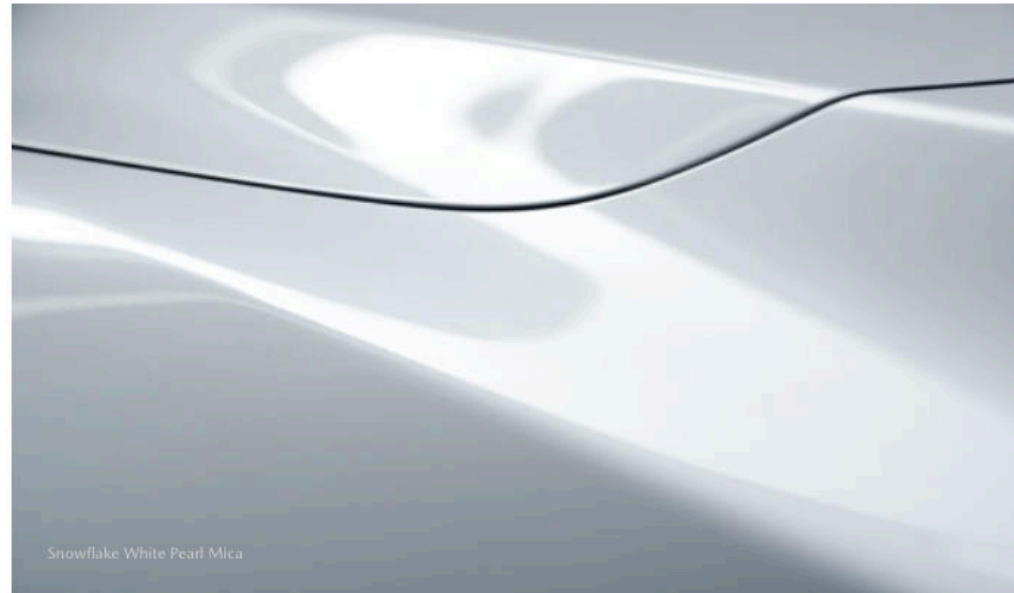
The difference between a good drive and an inspiring one is confidence. That's why we equip every Mazda CX-5 with i-Activsense® safety features—which alert you to hazards and help you avoid collisions or lessen their impact. i-Activsense® includes a host of standard safety innovations such as Advanced Smart City Brake Support with Pedestrian Detection,<sup>1</sup> along with available features like a 360° View Monitor<sup>2</sup> and Driver Attention Alert.<sup>3</sup> Together, this suite of advanced safety features creates a more confident and inspiring experience for both you and your passengers.

<sup>1</sup> Advanced Smart City Brake Support with Day and Night-time Pedestrian Detection operates under certain conditions between about 2 and 50 mph when object is a vehicle and between about 6.2 to 50 mph when the object is a pedestrian. It is not a substitute for safe and attentive driving and is only designed to reduce damage in the event of a collision. There are limitations to the operation and detection of the system. Please see your Owner's Manual for further details. <sup>2</sup> 360° View Monitor may not provide a comprehensive view of the entire surrounding area of this vehicle. Always check your surroundings visually. Please see your Owner's Manual for further details. <sup>3</sup> Driver Attention Alert operates between about 40 to 87 mph. It is not a substitute for safe and attentive driving. There are limitations to the operation and detection of the system. Please see your Owner's Manual for further details.

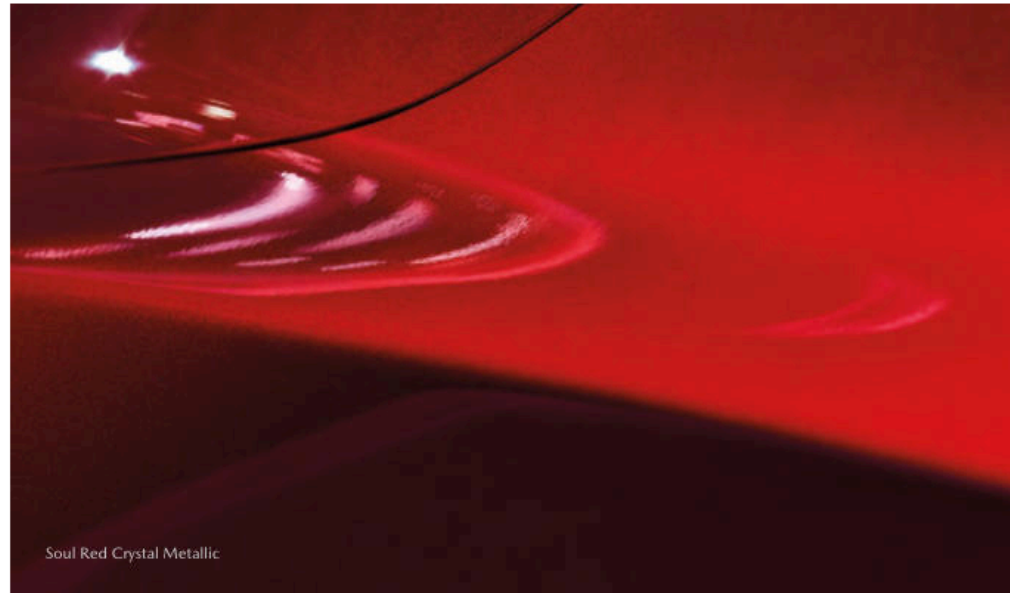
## KODO: "SOUL OF MOTION"

Our design philosophy is simple yet highly challenging to accomplish: capture energy in motion, even at a standstill. With curves and angles so striking, they command your attention through a mere glance. Eliciting this kind of instant emotional response requires a human touch. Hands on clay, shaping form with warmth and precision. Eliminating all that is unnecessary, leaving only what is beautiful. Transferring the energy of the maker into every nuance. We call this Kodo: "Soul of Motion" design. A dynamic sense of motion created for humans, by humans. This is the inspiration behind the Mazda CX-5.





Snowflake White Pearl Mica



Soul Red Crystal Metallic

## A VIBRANT EXPRESSION

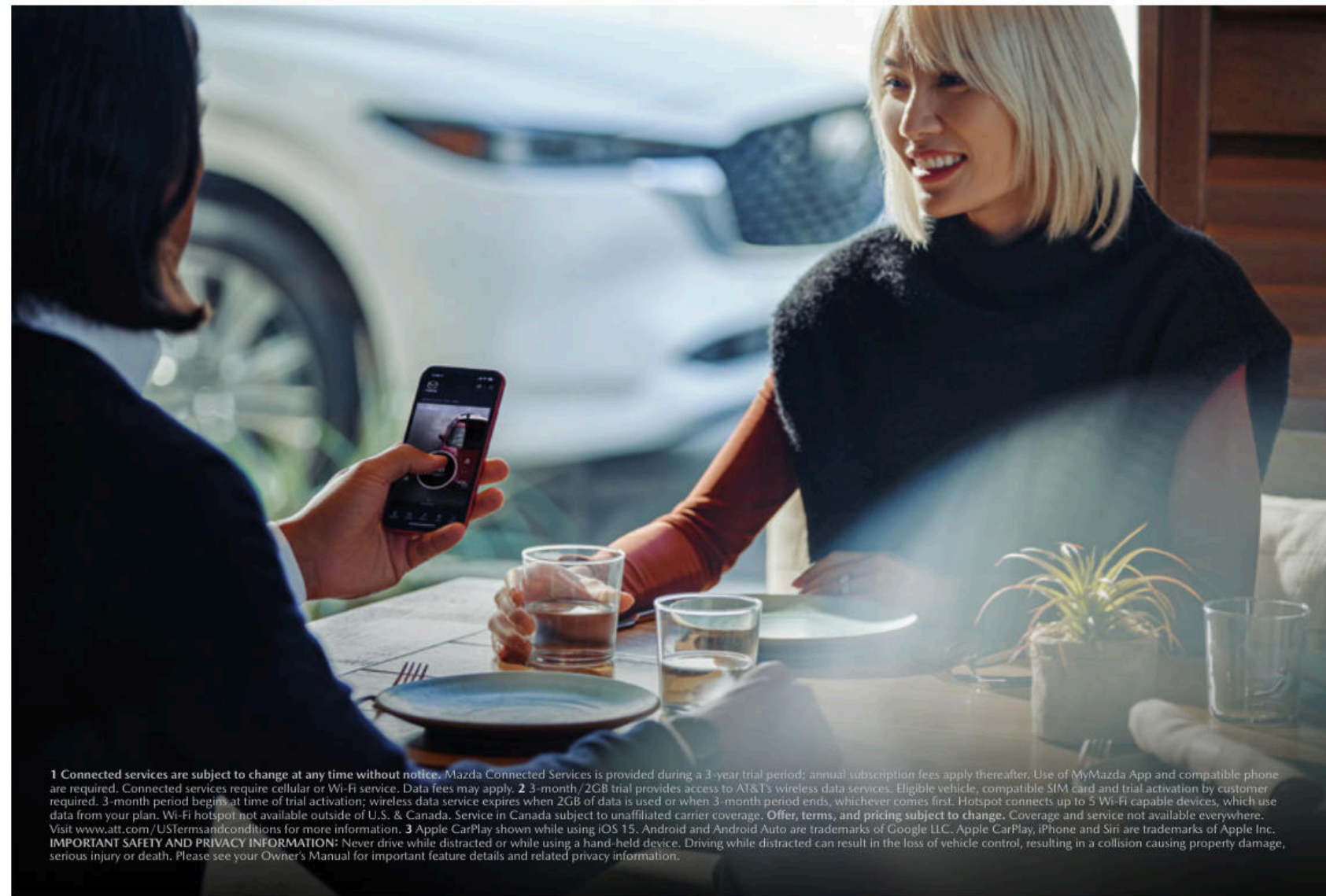
Each element of our design process is intentional. Including the paint. Before a single drop of color is applied, master painters first perfect their technique by hand. Ensuring the surface of the Mazda CX-5 has depth and saturation. They apply color with precision, illuminating the curves and characteristics of our Kodo design. The machines used to paint the CX-5 are calibrated to replicate the exact movement of this human technique.

Our array of lustrous finishes—including the Snowflake White Pearl Mica and Soul Red Crystal Metallic—may be the final touch on the CX-5, but it is the first thing that will catch your eye. And it will continue to draw your gaze, time and time again.



## MAKE A SMARTER CONNECTION

Mazda Connected Services<sup>1</sup> standard across all CX-5 models, enables you to access your vehicle's health status report, start the engine, lock and unlock the doors remotely and more, all through the MyMazda App. It's complimentary for the first three years of ownership! Your CX-5 is also equipped with in-car Wi-Fi<sup>2</sup> capabilities. In addition, we've placed every control within your reach, so you can stay focused on the road ahead. And for an enhanced experience, the Mazda Connect™ Infotainment System features a large 10.25-inch center display and includes standard Apple CarPlay™ integration<sup>3</sup> for your iPhone® (shown) plus Android Auto™ integration.<sup>3</sup>



**1 Connected services are subject to change at any time without notice.** Mazda Connected Services is provided during a 3-year trial period; annual subscription fees apply thereafter. Use of MyMazda App and compatible phone are required. Connected services require cellular or Wi-Fi service. Data fees may apply. **2** 3-month/2GB trial provides access to AT&T's wireless data services. Eligible vehicle, compatible SIM card and trial activation by customer required. 3-month period begins at time of trial activation; wireless data service expires when 2GB of data is used or when 3-month period ends, whichever comes first. Hotspot connects up to 5 Wi-Fi capable devices, which use data from your plan. Wi-Fi hotspot not available outside of U.S. & Canada. Service in Canada subject to unaffiliated carrier coverage. Offer, terms, and pricing subject to change. Coverage and service not available everywhere. Visit [www.att.com/USTermsandconditions](http://www.att.com/USTermsandconditions) for more information. **3** Apple CarPlay shown while using iOS 15. Android and Android Auto are trademarks of Google LLC. Apple CarPlay, iPhone and Siri are trademarks of Apple Inc. **IMPORTANT SAFETY AND PRIVACY INFORMATION:** Never drive while distracted or while using a hand-held device. Driving while distracted can result in the loss of vehicle control, resulting in a collision causing property damage, serious injury or death. Please see your Owner's Manual for important feature details and related privacy information.



## BALANCING SILENCE AND SOUND

Letting the right amount of sound in and keeping distracting noises at bay. This is the very essence of Mazda's approach to sound. In the cabin of the CX-5, our engineers have taken steps to reduce vibrations, while sound-insulating materials subdue outside clamor. Measures like these set the stage for a more refined listening experience and further enhance the connection between you and your CX-5.



## OPEN TO INSPIRATION

Life is all about discovery. So, we designed the Mazda CX-5 to help you bring all those discoveries home with you. With an available Rear Power Liftgate<sup>1</sup> and ample cargo room that easily expands by folding down the 40/20/40 split 2nd-row seats, the CX-5 offers enhanced versatility, making it easier to bring all your found treasures along for the ride.

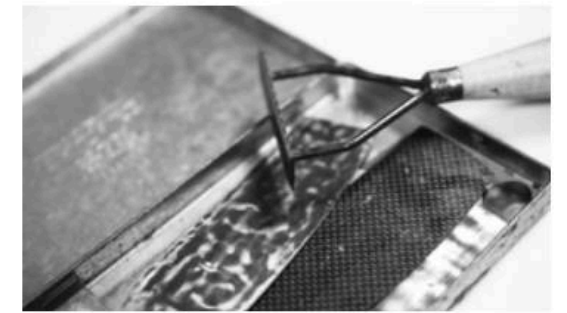


<sup>1</sup> Always check the area around the Rear Power Liftgate before opening and closing it. Please remember to properly secure all cargo. See your Owner's Manual for further details.



## THE HUMAN TOUCH

The Mazda Takumi are the artisans and craftsmen who hone their skills for years, even decades, to achieve mastery. From their first sketch to the final stitch, their passion, patience and persistence are poured into every design. The Takumi masters are so highly skilled, they can carve a block of clay into a work of art. Instinctually, they use their sight, as well as their touch, to ensure that every curve is perfectly proportioned to their final vision. A process that continues until this human energy is passed onto the sheet metal, breathing life into the vehicle. From designer to driver, this connection ultimately creates an enriching emotional bond between you and your Mazda.



## REDEFINING REFINEMENT

With you in mind, our Takumi set out to create beautiful elements through shape, texture, and color. Expert fabricators craft a range of distinct and expressive upholstery designs using soft textures and premium stitching. The exquisite CX-5 2.5 Turbo Signature features natural materials like Caturra Brown Nappa leather and genuine layered wood trim, while 2.5 Turbo models feature black leather seats complemented with red stitching. Every inch of upholstery is crafted to make your driving experience better and provide an elegant level of refinement—reserved just for you.





Every Mazda is designed to inspire.

We refine every detail, so you can focus on the moments that matter.

Because how you feel, your emotions, your stories—are our greatest rewards.

Deliberate engineering and thoughtful crafting go into every Mazda to feel like no other drive before it.

Because to us, the road is a source of discovery, to which there is no end.



## BEAUTIFULLY ACCESSORIZED

Mazda offers thoughtfully designed accessories that perform seamlessly with your CX-5. From the available Roof Rack to the All-Weather Floor Mats<sup>1</sup> (shown), all are crafted to the contours of your vehicle to enhance its design and versatility. Plus, when installed by your Mazda Dealer, all Genuine Mazda Accessories carry the same New Vehicle Limited Warranty<sup>2</sup> as your new Mazda. Wherever your journey takes you, we've designed our accessories to not only work with you, but to complement your style, too.

To learn more about Genuine Mazda Accessories, visit [MazdaUSA.com](http://MazdaUSA.com).

- Alloy Pedals
- All-Weather Floor Mats
- Blue Tint Hydrophilic Exterior Mirrors
- Cargo Mat
- Cargo Net
- Cargo Tray
- Collapsible Cargo Carrier
- First Aid Kit
- Frameless Auto-Dimming Rearview Mirror with HomeLink®
- Front & Rear Bumper Trim
- Illuminated Doorsill Trim Plates
- Interior Lighting Kit
- Moonroof Wind Deflector
- Navigation System
- Protective Seat Covers
- Rear Bumper Guard
- Retractable Cargo Cover
- Roadside Assistance Kit
- Roof Rack-Cross Bars
- Roof Rack-Side Rails
- Side Window Deflectors
- Soft Cargo Liner
- Splash Guards (Front & Rear)
- Thule® Board Shuttle
- Thule® Canyon Roof Basket with Stretch Cargo Net
- Thule® Force M Cargo Box
- Thule® Glide and Set Kayak Carrier
- Thule® Hull-A-Port Pro
- Thule® Transporter
- Thule® Universal Flat Top
- Thule® Upright Bike Carrier
- Thule® Vertex 2 & 4 Hitch-Mount Bike Carrier
- Tire Valve Stem Caps
- Touch-Up Paint
- Trailer Hitch (Available Spring 2022)
- Wheel Locks (Chrome and Black)
- Windshield Sunscreen

<sup>1</sup> Please make sure floor mats are secured properly and do not install two floor mats, one on top of the other, on the driver's side. Please see your Owner's Manual for further details. <sup>2</sup> Genuine Mazda Accessories sold and installed by a Mazda Dealer are covered for the duration of the New Vehicle 36-month/36,000-mile Limited Warranty, or if vehicle is outside of the New Vehicle Limited Warranty, then 12-months/12,000-miles from the installation date. Please refer to your Warranty Information booklet or check with your Mazda Dealer for details. **IMPORTANT ACCESSORY INFORMATION:** Items are subject to availability. With all accessories, please check with your Mazda Dealer for applicable models. In some cases, parts in addition to those shown will be required for proper installation. In all cases, professional installation by your Mazda Dealer is recommended. Please see your Mazda Dealer for product details and availability.



## THE MAZDA COLLECTION

Design, heritage and a passion for driving. The Mazda Collection is inspired by these core values. Dynamic and modern elements take shape through human energy, craftsmanship and the Never Stop Challenging spirit.

See the entire line of apparel and lifestyle accessories at [MazdaCollection.com](https://www.mazdacollection.com).



## ENGINES

SKYACTIV®-G 2.5 DOHC 16-valve 4-cylinder engine with cylinder deactivation

187 hp @ 6,000 rpm

186 lb-ft of torque @ 4,000 rpm

SKYACTIV®-G 2.5 Dynamic Pressure Turbo engine

256 hp @ 5,000 rpm (with 93 octane fuel)

320 lb-ft of torque @ 2,500 rpm (with 93 octane fuel)

227 hp @ 5,000 rpm (with 87 octane fuel)

310 lb-ft of torque @ 2,000 rpm (with 87 octane fuel)

## TRANSMISSION & DRIVETRAIN

SKYACTIV-Drive 6-speed automatic with manual shift and Sport modes

SKYACTIV-VEHICLE DYNAMICS with G-Vectoring Control Plus

i-ACTIV AWD\*

Available Mazda Intelligent Drive Select (Mi-Drive)

Hill Launch Assist<sup>a</sup>

## FUEL ECONOMY

EPA-estimated MPG (city/highway/combined)<sup>b</sup>

SKYACTIV-G 2.5 S

SKYACTIV-G 2.5 Turbo

AWD

24/30/26

22/27/24

## FUEL TANK CAPACITY

15.3 U.S. Gallons

## DIMENSIONS

Overall length: 180.1"

Wheelbase: 106.2"

Width: 83.3" (including side mirrors)

Height: 66.1"/66.3" (2.5 S/2.5 Turbo, without roof rails up to shark fin antenna)

## CARGO CAPACITY

29.1/30.8 (cu ft with 2nd-row seatback up and floorboard up/down)

58.1/59.3 (cu ft with 2nd-row seatback folded down and floorboard up/down)

## TOWING CAPACITY

Up to 2,000 pounds<sup>c</sup>



CX-5 2.5 S



AVAILABLE EXTERIOR COLORS<sup>1</sup>



CX-5 2.5 S SELECT



AVAILABLE EXTERIOR COLORS<sup>1</sup>

## STANDARD FEATURES INCLUDE:

SKYACTIV®-G 2.5 DOHC 16-valve, 4-cylinder engine with cylinder deactivation

SKYACTIV-Drive 6-speed automatic transmission with manual shift and Sport modes

SKYACTIV-VEHICLE DYNAMICS with G-Vectoring Control Plus i-ACTIV AWD\*

17-inch alloy wheels in Gray Metallic finish

P225/65 R17 all-season tires

LED headlights with auto on/off

Daytime running lights

Rain-sensing windshield wipers

Rear intermittent window wiper

Rear View Monitor<sup>2</sup>

Body-colored rear roofline spoiler

Body-colored power side mirrors with integrated LED turn signals

Air conditioning with pollen filter

Tire Pressure Monitoring System

Push Button Start

Leather-wrapped steering wheel and shift knob

Power door locks with remote keyless entry

Power windows with one-touch down/up feature on all windows

4-speaker audio system with automatic level control

Bluetooth® hands-free phone and audio streaming

Dual front USB audio input ports

Steering-wheel-mounted audio and cruise controls

40/20/40 split one-touch fold-down and reclining rear seatback

Overhead console with sunglasses holder

Three 12-volt power outlets (front, 2nd-row and cargo area)

Multi-Information Display with trip computer

Apple CarPlay™ integration<sup>3</sup>

Android Auto™ integration<sup>3</sup>

10.25-inch full-color center display

MAZDA CONNECT™ Infotainment System<sup>4</sup> with:

Infotainment system voice command, Multifunction Commander control, Radio Broadcast Data System program information, HD Radio™, Pandora® integration, SMS text message audio delivery and reply, and E911 automatic emergency notification<sup>5</sup>

Mazda Connected Services (3-year trial)<sup>6</sup>

Dual front air bags, front side-impact air bags and side-impact air curtains<sup>7</sup>

Advanced Smart City Brake Support with Pedestrian Detection<sup>8</sup>

Smart Brake Support with Collision Warning<sup>9</sup>

Mazda Radar Cruise Control with Stop & Go<sup>10</sup>

Lane Departure Warning System<sup>11</sup>

Lane-keep Assist<sup>11</sup>

High Beam Control

Blind Spot Monitoring<sup>12</sup>

Rear Cross Traffic Alert<sup>12</sup>

Dynamic Stability Control<sup>13</sup> and Traction Control System

## SELECT PACKAGE ADDS TO OR IN PLACE OF CX-5 2.5 S FEATURES:

Auto-leveling headlights

Rear privacy glass

Dual-zone automatic climate control with pollen filter

Mazda Advanced Keyless Entry System

Leatherette seats with Lux Suede® inserts

Heated front seats with 3-level adjustment

6-way power-adjustable driver's seat with manual lumbar support

6-way manual front passenger seat with seat-height adjuster

Dual illuminated visor vanity mirrors

Rear fold-down center armrest

Dual rear USB charging ports

Rear air conditioning vents

6-speaker audio system with automatic level control

Please refer to the spread on the following pages for important qualifiers.

<sup>a</sup> Hill Launch Assist is an auxiliary device that assists the driver in accelerating from a stop while on a slope. It is not a substitute for safe and attentive driving. There are limitations to the system. Please see your Owner's Manual for further details.  
<sup>b</sup> EPA-estimated mileage. Actual results will vary. <sup>c</sup> Towing capacity shown is maximum and must be reduced by the weight of any passenger, cargo hitch or optional equipment in the towing vehicle. Please refer to vehicle Owner's Manual for details regarding towing capacities and other valuable information. Towing a trailer will have an effect on vehicle's handling, braking, durability, performance and driving economy. For specific information on recommended or required equipment, see your Mazda Dealer. Hitches are available through manufacturers other than Mazda.



CX-5 2.5 S PREFERRED



AVAILABLE EXTERIOR COLORS<sup>1</sup>

FEATURES IN ADDITION TO OR IN PLACE OF SELECT PACKAGE:

- Power sliding glass moonroof with one-touch-open feature
- Leather-trimmed seats
- Auto-dimming rearview mirror with HomeLink<sup>®</sup>
- 8-way power-adjustable driver's seat with power lumbar support and 2-position memory
- 6-way power-adjustable passenger seat
- Rear Power Liftgate<sup>11</sup> with programmable height adjustment



CX-5 2.5 S CARBON EDITION



AVAILABLE EXTERIOR COLOR<sup>1</sup>

FEATURES IN ADDITION TO OR IN PLACE OF PREFERRED PACKAGE:

- 19-inch alloy wheels with Black Metallic finish
- P225/55 R19 all-season tires
- Black power side mirrors with integrated LED turn signals
- Unique Black grille with Black signature wing
- Leather-wrapped steering wheel with Red stitching
- Leather-wrapped gear selector with Red stitching
- Black interior accents



CX-5 2.5 S PREMIUM



AVAILABLE EXTERIOR COLORS<sup>1</sup>

FEATURES IN ADDITION TO OR IN PLACE OF PREFERRED PACKAGE:

- Mazda Intelligent Drive Select (Mi-Drive)
- 19-inch alloy wheels with Black Metallic finish with Machine Cut
- P225/55 R19 all-season tires
- Adaptive Front-lighting System
- LED combination taillights
- LED daytime running lights
- Dual heated side mirrors
- Paddle shifters
- 7-inch LCD Meter Display
- Bose<sup>®</sup> 10-speaker surround sound system with Centerpoint<sup>®</sup> 2 and AudioPilot<sup>®</sup> 2
- SiriusXM<sup>®</sup> Satellite Radio with 3-month subscription<sup>15</sup>



CX-5 2.5 S PREMIUM PLUS



AVAILABLE EXTERIOR COLORS<sup>1</sup>

FEATURES IN ADDITION TO OR IN PLACE OF PREMIUM PACKAGE:

- Automatic power-folding side mirrors
- Windshield wiper de-icer
- Windshield-projected Active Driving Display
- Ventilated front seats
- Heated steering wheel
- Heated rear seats

**IMPORTANT QUALIFIERS:** **1** Available exterior colors, some available at extra cost, vary based on vehicle and trim combinations. Visit MazdaUSA.com to see all the vibrant color choices available. **2** Rear View Monitor does not provide a comprehensive view of the entire rear area of this vehicle. Always check your surroundings. Please see your Owner's Manual for further details. **3** Requires compatible phone and standard text and data rates apply. Third-party interface providers are solely responsible for their product functionality and third-party terms and privacy statements apply. Don't drive while distracted or while using a hand-held device. Android Auto is a trademark of Google LLC. Apple CarPlay is a trademark of Apple Inc. **4** Don't drive while distracted. Even with voice commands, only use Mazda Connect<sup>™</sup> / other devices when safe. Some features may require cellular or Wi-Fi service; some features may be locked out while the vehicle is in motion. Not all features are compatible with all phones. Message and data rates may apply. **5** Mobile 911 automatically calls 911 from a paired hands-free device when a moderate to severe collision is detected. Specific phone settings are required. There are limitations to the system. Please see your Owner's Manual for further details. **6** Connected services are subject to change at any time without notice. Mazda Connected Services is provided during a 3-year trial period; annual subscription fees apply thereafter. Use of MyMazda App and compatible phone are required. Connected services require cellular or Wi-Fi service. Data fees may apply. Never drive while distracted or while using a hand-held device. Please see your Owner's Manual for important feature details and related privacy information. **7** Always wear your seat belt and secure children in the rear seats in appropriate child restraints. **8** Advanced Smart City Brake Support with Day and Night-time Pedestrian Detection operates under certain conditions between about 2 and 50 mph when object is a vehicle and between about 6.2 to 50 mph when the object is a pedestrian. It is not a substitute for safe and attentive driving and is only designed to reduce damage in the event of a collision. There are limitations to the operation and detection of the system. Please see your Owner's Manual for further details. **9** Smart Brake Support with Collision Warning operates under certain conditions above 10 mph. It is not a substitute for safe and attentive driving and is only designed to reduce damage in the event of a collision. There are limitations to the range and detection of the system. Please see your Owner's Manual for details. **10** Mazda Radar Cruise Control (MRCC) with Stop & Go is not a substitute for safe and attentive driving. There are limitations to the range and detection of the system. Driver action is required to resume MRCC with Stop & Go after a complete stop. Please see your Owner's Manual for further details. **11** Lane Departure Warning System and Lane-keep Assist operate at speeds of about 37 mph and faster. Neither system is a substitute for safe and attentive driving. There are limitations to the range and detection of the systems. Please see your Owner's Manual for further details. **12** Always check your mirrors. Be aware of your surroundings. There are limitations to the range

and detection of the system. Please see your Owner's Manual for further details. **13** Dynamic Stability Control (DSC) is an electronic system designed to help the driver maintain control under adverse conditions. It is not a substitute for safe driving practices. Factors including speed, road conditions and driver steering input can all affect whether DSC will be effective in preventing loss of control. Please see your Owner's Manual for further details. **14** Always check the area around the Rear Power Liftgate before opening and closing it. Please see your Owner's Manual for further details. **15** SiriusXM audio and data services each require a subscription sold separately, or as a package, by Sirius XM Radio Inc. If you decide to continue service after your trial, the subscription plan you choose will automatically renew thereafter and you will be charged according to your chosen payment method at then-current rates. Fees and taxes apply. To cancel, you must call SiriusXM at 1-866-635-2349. See SiriusXM Customer Agreement for complete terms at www.siriusxm.com. All fees and programming subject to change. Current information and features may not be available in all locations. Sirius, XM and all related marks and logos are trademarks of Sirius XM Radio Inc. **16** Requires Qi-enabled smartphone. Please see your Owner's Manual for further details. **17** 360<sup>°</sup> View Monitor may not provide a comprehensive view of the entire surrounding area of this vehicle. Always check your surroundings visually. Please see your Owner's Manual for further details. **18** Always check your mirrors. Be aware of your surroundings. There are limitations to the range and detection of the system. Please see your Owner's Manual for further details. **19** Traffic Sign Recognition System is not a substitute for safe and attentive driving. Factors including weather and condition of the traffic sign can impact recognition and display of the sign. Always check the traffic signs visually while driving. Please see your Owner's Manual for further details. **20** Smart City Brake Support-Reverse operates under certain conditions between about 2 and 4 mph when an obstruction is detected at the rear of the vehicle. It is not a substitute for safe and attentive driving and is only designed to reduce damage in the event of a collision. There are limitations to the operation and detection of the system. Please see your Owner's Manual for further details. **21** Driver Attention Alert operates between about 40 to 87 mph. It is not a substitute for safe and attentive driving. There are limitations to the range and detection of the system. Please see your Owner's Manual for further details. **22** Traffic Jam Assist is not a substitute for safe and attentive driving. There are limitations to the range and detection of the system. Please see your Owner's Manual for further details. **PRODUCT CHANGES AND OPTIONS AVAILABILITY:** Following publication of this brochure, certain changes in standard equipment, options, prices and the like—or product delays—may have occurred which would not be included in these pages. Your Mazda Dealer is your best source for up-to-date information. Mazda reserves the right to change product specifications at any time without incurring obligations.



CX-5 2.5 TURBO



AVAILABLE EXTERIOR COLORS<sup>1</sup>

FEATURES IN ADDITION TO OR IN PLACE OF PREMIUM PLUS PACKAGE:

- SKYACTIV<sup>®</sup>-G 2.5 Dynamic Pressure Turbo engine
- 19-inch alloy wheels with Black Metallic finish
- Black automatic power-folding side mirrors
- Front grille with Gloss Black finish
- Signature wing with Gloss Black finish
- Gloss Black lower bumper trim
- Gloss Black rocker panel and wheel arch molding
- Turbo rear badge
- Wireless phone charger<sup>16</sup>
- Black interior trim with Red stitching
- Leather-wrapped steering wheel with Red stitching
- Leather-wrapped gear selector with Red stitching



CX-5 2.5 TURBO SIGNATURE



AVAILABLE EXTERIOR COLORS<sup>1</sup>

FEATURES IN ADDITION TO OR IN PLACE OF 2.5 TURBO PACKAGE:

- 19-inch alloy wheels with Bright Silver finish
- Body-colored automatic power-folding side mirrors
- Front grille with Bright finish
- Signature wing with Bright finish
- Body-colored lower bumper trim
- Body-colored rocker panel and wheel arch molding
- Signature AWD badge
- Caturra Brown Nappa leather-trimmed seats
- Genuine layered wood trim
- SiriusXM<sup>®</sup> Traffic and Travel Link<sup>®</sup> Services<sup>15</sup> 3-year service includes:
  - Traffic, Weather, Sports scores, Fuel price and Nearby or destination parking
- Mazda Navigation System
- Interior trim with Bright Silver finish and Black headliner
- Leather-wrapped steering wheel with unique stitching
- Interior LED lighting: Ambient cabin lighting, front and rear footwells, vanity mirror, glove box, cargo area
- Frameless auto-dimming rearview mirror with HomeLink<sup>®</sup>
- 360<sup>°</sup> View Monitor<sup>17</sup> and front and rear parking sensors<sup>18</sup>
- Traffic Sign Recognition System<sup>19</sup>
- Smart City Brake Support-Reverse<sup>20</sup>
- Driver Attention Alert<sup>21</sup>
- Traffic Jam Assist<sup>22</sup>

Please refer to the previous spreads for important qualifiers.

