

MODEL YEAR 2020

A-CLASS



- facebook.com/mercedesbenzusa
- linkedin.com/company/mercedes-benz-usa
- instagram.com/mercedesbenzusa
- twitter.com/MercedesBenzUSA
- youtube.com/mbusa

©2019 Mercedes-Benz USA, LLC • One Mercedes-Benz Drive, Sandy Springs, GA 30328 • 1-800-FOR-MERCEDES • MBUSA.com
Marketing Communications. All illustrations and specifications contained in this brochure are based on the latest product information available at the time of publication. Mercedes-Benz USA reserves the right to make changes at any time, without notice, to colors, materials, equipment, specifications and models. Any variations in colors shown are due to reproduction variations of the printing process. Illustrations may include test situations. Some vehicles may be shown with non-U.S. equipment. Some vehicles are shown with optional equipment. Apple CarPlay, iPad, iPhone and Siri are trademarks, registered trademarks or service marks of Apple Inc. Bluetooth is a registered trademark of Bluetooth SIG, Inc. Burmester is a registered trademark of Burmester Audiosysteme GmbH, Berlin, Germany. Android and Android Auto are trademarks of Google Inc. HERE is a trademark of HERE North America, LLC. HD Radio is a proprietary trademark of iBiquity Digital Corporation. SiriusXM and all related marks and logos are trademarks of Sirius XM Radio Inc. Tuneln is a registered service mark of Tuneln, Inc. Twitter is a registered trademark of Twitter, Inc.



MIX
Paper from
responsible sources
FSC® C101537

THE 2020 A-CLASS

A sedan so intelligent, it's got everyone talking.

A shirt in size Small doesn't have fewer sleeves or pockets than a Large. A small nonfat, no-foam almond-milk latte is just as tasty as the giant one. So where did automakers get the idea that the opposite of larger is lesser? You want a car that's big on innovations, features and style in a compact size? Mercedes-Benz hears you. And created a car that listens. The A-Class isn't just the smallest sedan to wear the Star, it's one of the most advanced—with a voice assistant you can talk to like a real person. And the performance and luxury that make it a real Mercedes-Benz.

MODELS

A 220 Sedan

A 220 4MATIC Sedan



04
Key Features

06
Model Overview

16
Packages

18
Sedan

24
Build Your Own

28
Ownership



A 220 SEDAN

188-hp inline-4 turbo engine

Polar White

18" AMG® twin 5-spoke wheels

AMG Line

Rear spoiler

Standard and available equipment may vary by model. Please see back of brochure.

KEY FEATURES



PERFORMANCE

-
- Inline-4 turbo engine
- 7G-DCT 7-speed dual-clutch transmission with shift paddles
- DYNAMIC SELECT drive modes
- Front-wheel drive, or variable-torque 4MATIC® all-wheel drive
- 4-wheel independent suspension: Comfort, lowered* or adaptive*
- ECO Start/Stop system



DESIGN

-
- Power Panorama roof
- LED headlamps and taillamps; or active LED headlamps with Adaptive Highbeam Assist*
- 17" or 18" alloy wheels*¹
- Two distinctive grille designs, each integrating the iconic Star*
- AMG Line and Night Package*
- Hand-fitted upholsteries, from MB-Tex to suedelike DINAMICA to leather*
- Aluminum or natural grain wood trim*



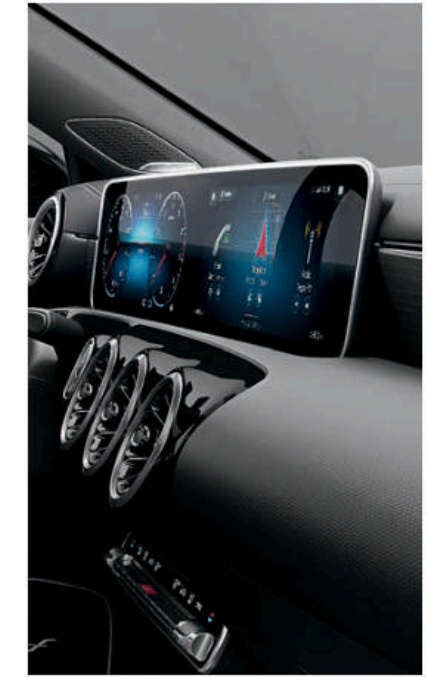
SAFETY

-
- Blind Spot Assist with Exit Warning*
- Radar-based Active Brake Assist collision mitigation
- Rearview camera
- Intelligent Drive* driver assistance suite, including Active Distance Assist DISTRONIC®, Active Steering Assist, Active Brake Assist with Cross-Traffic Function, Active Lane Change Assist, Active Speed Limit Assist, Route-based Speed Adaptation, Evasive Steering Assist, PRE-SAFE® PLUS, and PRE-SAFE Sound for hearing protection
- Mercedes-Benz Emergency Call



LUXURY

-
- 12-speaker Burmester® Surround Sound System*
- Power front seats with memory
- Heated, ventilated and multicontour front seats*
- 40/20/40-split folding rear seats
- Heated steering wheel*
- Heated, power-folding* side mirrors
- Dual-zone climate control with dust and odor filters
- 64-color LED ambient lighting with illuminated dash vents*
- Hands-free Active Parking Assist*



TECHNOLOGY

-
- Mercedes-Benz User Experience (MBUX); "Hey, Mercedes" voice assistant with Natural Language Understanding; MB Navigation with live augmented video of turns*
- Dual 7" or 10.25"* reconfigurable color screens (instruments and central multimedia touchscreen), plus Touch Control Buttons on steering wheel, and console touchpad
- Apple CarPlay™ and Android Auto
- Head-Up Display*
- Wireless phone charging*
- Mercedes me connect featuring smartphone app with Remote Start, 4G LTE WiFi,* and more²

*Optional or not available on some models. Please see back of brochure.

Beyond the innovations that are the first in its competitive class, the A-Class presents you with some Mercedes-Benz firsts, too. No matter how affordable, it had to first be a Mercedes-Benz.



NOT ONLY CAN YOU AFFORD IT
YOU CAN ASK

A is for advanced

The most affordable Mercedes-Benz is now one of the most advanced sedans in its class—or at any price. Say “Hey, Mercedes” and it can adjust settings and more as you ask. High-tech options can ease your way in traffic, through a school zone, or into the next lane. And its clean, athletic lines and artful digital cockpit appeal to all your senses.

A is for adaptable

Compact on the outside, the A-Class is designed to be an ideal fit for your ever-changing, fast-paced life. Five full-size adults can enjoy its cabin comforts, yet it’s agile and turbo-quick in traffic or twisty roads. And from standard dual-zone climate control to available 64-color ambient lighting and a multimode adaptive suspension, you can fine-tune your A-Class to suit your mood, and perk it up.

A-Class models

- A 220 Sedan
188-hp inline-4 turbo
Front-wheel drive
- A 220 4MATIC Sedan
188-hp inline-4 turbo
Variable-torque 4MATIC®
all-wheel drive





A 220 SEDAN

Macchiato Beige MB-Tex
Aluminum trim with linear grain
Premium Package
Heated and ventilated front seats
64-color LED ambient lighting

A GRACEFUL SENSE OF **URGENCY**

Agility is what an athlete calls elegance

Threading through city traffic. The rush-hour expressway merge. Unraveling a winding road. Or claiming the last parking spot. At speed or a crawl, the nimble handling and eager acceleration of an A-Class let you make emphatic moves elegantly. It's something a soccer star and dancer have in common: grace from strength. The turbo A 220 outputs 100% of its torque from 1,600–4,000 rpm, for swift acceleration at any speed. Its dual-clutch 7-speed can shift faster than a human. And 4MATIC® all-wheel drive* can vary power to each axle based on grip.³ All to get you on your way, right away.

Performance highlights

2.0L inline-4 twin-scroll turbo engine with 188-hp and 221 lb-ft of torque

7G-DCT 7-speed dual-clutch automatic transmission with shift paddles

Front-wheel drive or variable-torque 4MATIC all-wheel drive*

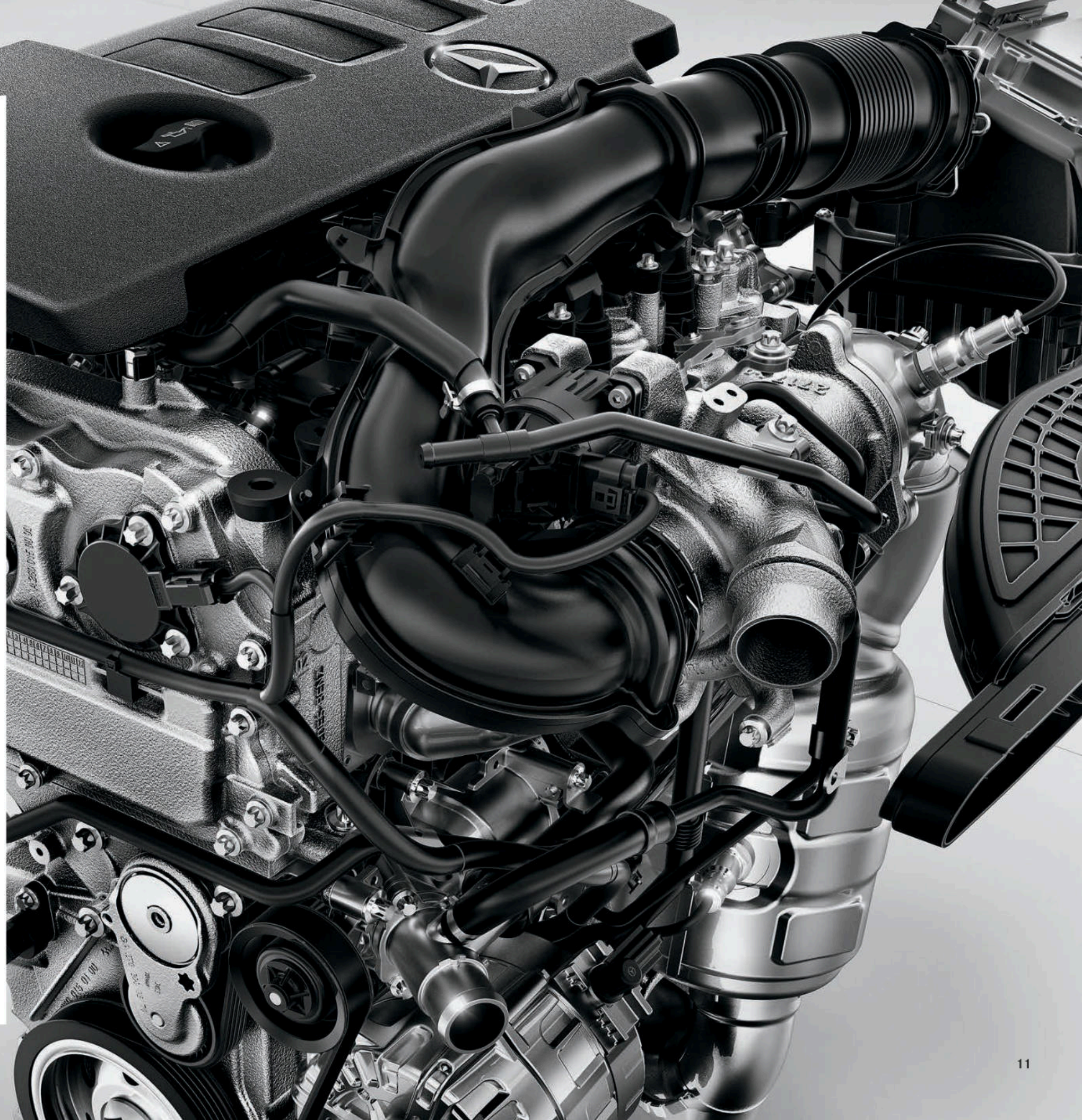
DYNAMIC SELECT with ECO, Comfort, Sport and Individual drive modes

Independent suspension, available with adaptive damping*

ECO Start/Stop system

A is for athletic. For agile. Adaptable. And for all-season. Take it to your favorite road and you'll find out something else: This A is for fun.

*Optional or not available on some models. Please see back of brochure.





AN IMMEDIATE SENSATION OF **TIMELESSNESS**

Spacious in every dimension

The supportive contours and hand-fitted upholstery of the A-Class driver seat—or all its seats—tell you right away: Your time here will be well spent. The front seats each include a 3-position memory. You can add heating, ventilation and multicontour support.* The rear seats welcome three adults, or fold down in a 3-way split.†

Special in every detail

Ultramodern digital displays and touch interfaces are presented in a cabin designed to please your senses for years. The 64-color LED ambient lighting* outlines the cockpit and fills the jet-style vents. The AMG Line makes it even sportier, from the pedals to the shift paddles.

The A-Class cabin is a refreshingly modern take on Mercedes-Benz values that never grow old: instant enjoyment that's carefully crafted to endure.

Luxury highlights

- Power front seats with memory
- Heated, ventilated and multicontour front seats*
- 40/20/40-split folding rear seats
- Heated steering wheel*
- Power Panorama roof
- Dual-zone climate control with dust, pollen and odor filters
- 64-color LED ambient lighting, including dash vents*
- Burmester® Surround Sound*

*Optional or not available on some models. Please see back of brochure.



VIGILANT, VIRTUAL VISION

Radar, cameras and sensors keep watch

Standard Active Brake Assist uses radar to help mitigate frontal collisions.⁵ The rearview camera overlays active steering guidelines on its in-dash display.⁶ Hands-free Active Parking Assist* and the multicamera Surround View System* help you get into and out of tight spots.

Proactive protection, advanced action

An available suite of driver assists⁷ lets you change lanes with a tap of a turn signal. It can reduce your cruising speed for tolls, exits or school zones. Help you execute an evasive move more smoothly. And proactively prepare for an impending front or rear impact—even emitting a special tone to pre-trigger your ears' protective reflexes.⁸

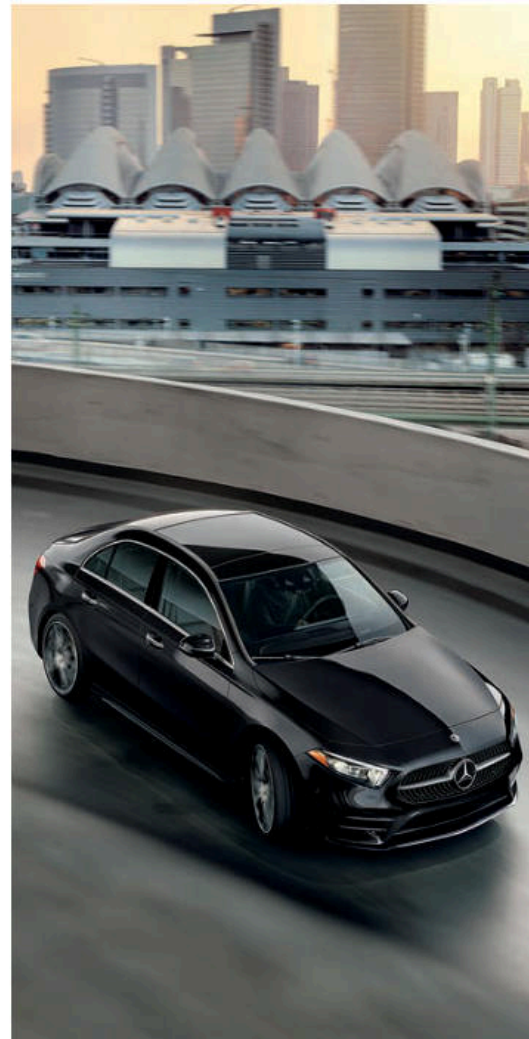
Safety highlights

Active Brake Assist frontal collision mitigation, rearview camera⁵

Multicamera Surround View System,*⁶
Active Parking Assist,*⁹ Blind Spot Assist with Exit Warning Assist*¹⁰

Driver Assistance Package* including Active Distance Assist DISTRONIC[®] cruise control; Route-based Speed Adaptation; Evasive Steering Assist; Active Blind Spot, Emergency Stop, Lane Change, Lane Keeping, Speed Limit and Steering Assists; PRE-SAFE[®] with front and rear impact preparation and hearing protection technology

Visionary safety and driver-assistance breakthroughs come from engineers who've spent decades looking ahead. Sometimes mere milliseconds ahead.



ARTIFICIAL AND ACTUAL INTELLIGENCE

Control starts with "Hey, Mercedes"

Artificial intelligence empowers the voice assistant of the Mercedes-Benz User Experience (MBUX) to respond to normal speech, like "I'm warm" to turn down the heat. You also have multitouch controls on the steering wheel, console and touchscreen. MB Navigation* can overlay guidance arrows on live video of your upcoming turn,¹¹ and display the posted speed limit in the speedometer.¹²

See it and hear it the way you like it

Crisp, side-by-side 7" or 10.25"* color displays include a digital instrument cluster and a central multimedia touchscreen. And Germany's renowned Burmester[®] has created a 12-speaker digital surround sound system.*

The genius of MBUX is not only how well it understands you now. It also gets smarter by learning your preferences over time.

Technology highlights

Mercedes-Benz User Experience (MBUX) with natural voice assistant, touchscreen, console touchpad, and steering-wheel Touch Controls

Over-the-air software updating²

MB Navigation with augmented video* using live imagery of surroundings

Apple CarPlay[™] and Android Auto,¹³ five USB-C ports,¹⁴ wireless charging*¹⁵

Head-Up Display¹⁶

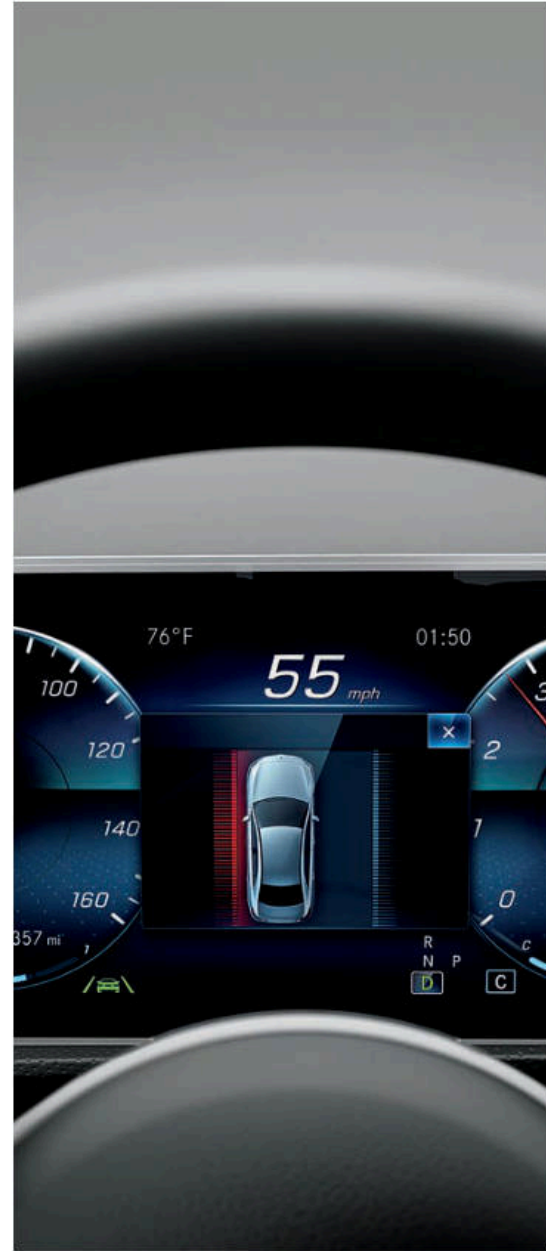
*Optional or not available on some models. Please see back of brochure.

OPTION PACKAGES



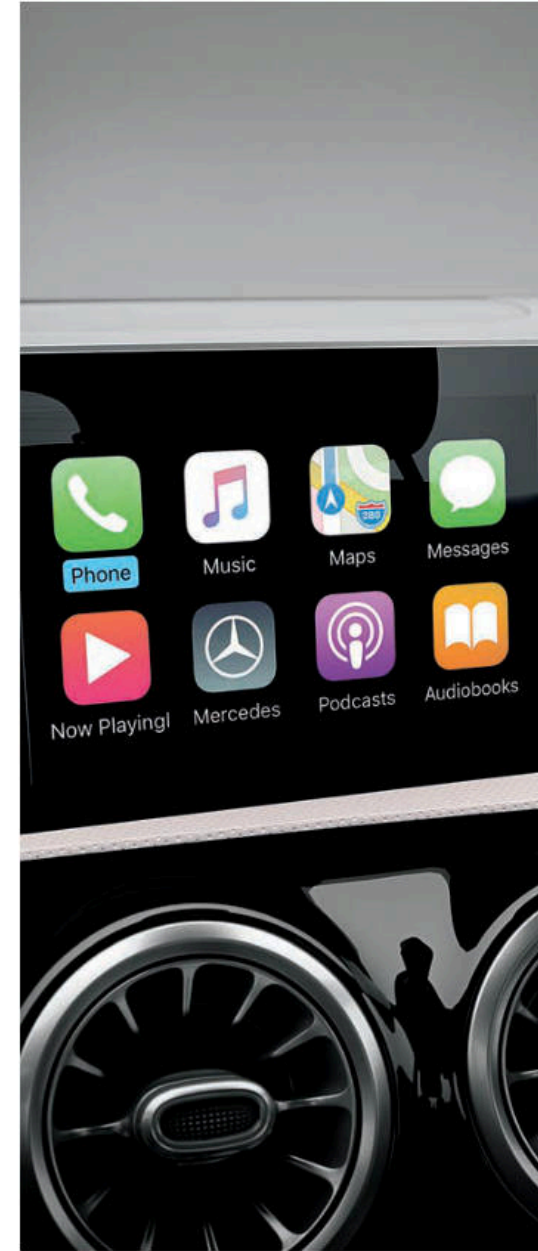
STYLING PACKAGES

AMG Line:
 18" AMG® twin 5-spoke wheels,¹ AMG body styling, and chrome diamond-block grille
 Sport front seats, sport steering wheel, brushed metal pedals, AMG floor mats
 Sport brakes, lowered comfort suspension
 Night Package adds:
 Gloss black wheel and body accents



DRIVER ASSISTANCE PACKAGE

Active Distance Assist DISTRONIC, Active Steering Assist, Route-based Speed Adaptation, Active Speed Limit Assist
 Evasive Steering Assist, Active Brake Assist with Cross-Traffic Function
 Active Blind Spot, Emergency Stop, Lane Change and Lane Keeping Assists
 PRE-SAFE® PLUS, PRE-SAFE Sound



PREMIUM PACKAGE

Blind Spot Assist with Exit Warning Assist
 10.25" digital instrument cluster display
 10.25" touchscreen multimedia display
 Auto-dimming driver-side and inside rearview mirrors
 Power-folding side mirrors
 KEYLESS-GO®
 HANDS-FREE ACCESS trunk opener

Bring your dream to your driveway

Even with abundant standard features, an appealing menu of options lets you tailor an A-Class to suit your needs and show off your style. Thoughtfully curated option packages—like the selection shown here—make it easy to add the most popular features, or bundle features that perform, or look, even better in concert than they would individually. There's also a wide selection of individual options and Genuine Mercedes-Benz Accessories that help you take the sporty sedan that's in your dreams and put it in your driveway.

Package contents and standard equipment vary by model. Turn to page 25 or visit MBUSA.com/A for details.

Other packages and options

Exterior Lighting Package
 Multimedia Package (including MB Navigation)
 Parking Assistance Package
 Adaptive suspension
 Blind Spot Assist with Exit Warning Assist
 Heated steering wheel
 64-color LED ambient lighting/illuminated vents
 Garage door opener
 SiriusXM with 6-month All Access trial
 Inductive wireless charging and NFC pairing
 Head-Up Display
 Burmester® Surround Sound System
 MBUX Interior Assistant

Three styling choices, seven wheel designs and a spectrum of cabin trims let you make your A 220 your own. And with 64 colors of ambient lighting to choose from, you can make it over. And over again.

Please see endnotes at back of brochure.

THE A 220 SEDANS

The price tag might be the most noticeable virtue of the A-Class. The luxury, innovation, space and style you get for that price are even more noteworthy.



Efficiency with enthusiasm

A twin-scroll turbo and CAMTRONIC variable valve lift team up to unleash 188 hp and 221 lb-ft of torque from a compact 2.0L inline-4. Paired with a 7-speed dual-clutch automatic, the fleet-footed A 220 earns a 24/34-mpg city/highway EPA estimate with 4MATIC® all-wheel drive, and 24/35 with front-wheel-drive.¹⁷

Comfort with composure

The independent suspension, with double wishbones up front and a multilink rear design, is available in three setups: standard tuning for a refined ride and poised handling, a lowered version in the AMG Line, and an optional multimode suspension that adapts to wheel movement, vehicle load and driving style.

Presence with personality

Even without a single option, the A 220 stands out with sleek lines, and a choice of two 17" wheels¹ or an 18" option. Adding the aero-aggressive styling of the AMG Line also includes 18" or 19" AMG® wheels, sport brakes, and a chrome diamond-block grille. Or accent all that in black with the Night Package.

Vision and variety

With 100% LED lighting inside and out, the A-Class helps you see and be seen in brilliant style. Optional active headlamps include automatic high beams. In the cabin, you can change up the available 64-color LED ambient lighting as you wish, over and over.

How the A-Class responds to your driving is even more important – and more clearly communicative – than the way its cockpit technology responds to your talking.



RESPONSIVE HAS BEEN REDEFINED

The A 220 and A 220 4MATIC Sedans

The A-Class might make reaching for the stars—at least that coveted three-pointed one—seem easy. But it makes achieving that goal as rewarding as ever. Perhaps even more so. That's because you get to enjoy the full-fledged futurism that's long been a family tradition. The most affordable Mercedes-Benz premiered its most advanced driver-car interface yet—so you can operate and adjust features just by saying what you want, from “I could use a coffee” to “make the interior lighting magenta.” It also has the widest array of touch interfaces: three of them.

Options include advanced driver assists like the A 220's most elite siblings. Such as changing lanes just by tapping a turn signal. Or cruise control that can slow down as you approach a toll plaza or offramp. And it's all wrapped in style that's pure Mercedes-Benz: sleek, clean and elegant. So while you marvel at how its cockpit responds to your talking, you also get to revel in the way its turbo torque and taut handling respond to your driving. Technology makes the A-Class a modern mobile device that's truly mobile. Tradition makes it a car that'll truly move you.

A 220 4MATIC SEDAN

188-hp inline-4 turbo engine

4MATIC® all-wheel drive

Patagonia Red metallic

19" AMG® multispoke wheels

AMG Line and Night Package



BUILD YOUR OWN

Specifications	A 220 Sedan	A 220 4MATIC Sedan	
Engine	Type	2.0L inline-4 turbo with Direct Injection	2.0L inline-4 turbo with Direct Injection
	Power	188 hp @ 5,500-6,100 rpm	188 hp @ 5,500-6,100 rpm
	Torque	221 lb-ft @ 1,600-4,000 rpm	221 lb-ft @ 1,600-4,000 rpm
Automatic transmission	7G-DCT dual-clutch 7-speed with shift paddles		
Acceleration	0-60 mph ¹⁴	7.1 sec	7.1 sec
Wheels	17" 10-spoke with all-season Extended Mobility tires ¹		
Suspension	4-wheel independent strut front and multilink rear with comfort tuning		
Drivetrain	Front-wheel drive	4MATIC [®] variable-torque all-wheel drive	

Dimensions	A 220 Sedan	A 220 4MATIC Sedan
Wheelbase	107.4"	107.4"
Overall length	179.1"	179.1"
Overall height	56.9"	56.9"
Overall width	w/mirrors 78.4"	78.4"
Curb weight	3,285 lbs	3,395 lbs
Headroom	front/rear 40.3" / 37.2"	40.3" / 37.2"
Legroom	front/rear 41.8" / 33.9"	41.8" / 33.9"
Shoulder room	front/rear 55.1" / 54.0"	55.1" / 54.0"
Cargo capacity	8.6 cu ft	8.6 cu ft

KEY STANDARD FEATURES

A 220	A 220 4MATIC	Performance and efficiency
●	●	ECO Start/Stop system
●	●	DYNAMIC SELECT with ECO, Comfort, Sport and Individual modes
●	●	Electric parking brake with automatic release in Drive or Reverse
—	●	4MATIC variable-torque all-wheel drive
●	●	Electromechanical power steering with STEER CONTROL

Safety and security		
●	●	Active Brake Assist radar-based frontal collision mitigation ⁵
●	●	ATTENTION ASSIST ^{19,15}
●	●	Electronic Stability Program (ESP [®])
●	●	Adaptive braking technology: Predictive Brake Priming, Automatic Brake Drying, Hill-Start Assist, brake HOLD feature
●	●	Emergency-sensing Brake Assist (BAS [®])
●	●	Crosswind Assist
●	●	Advanced Tire Pressure Monitoring System
●	●	Rearview camera ⁶
●	●	Mercedes-Benz Emergency Call
●	●	8 air bags
●	●	LED headlamps
●	●	LED Daytime Running Lamps and taillamps
●	●	Automatic light-sensing headlamps
●	●	SmartKey remote locking
●	●	Pushbutton KEYLESS-START
●	●	Antitheft alarm system with remote panic feature

A 220	A 220 4MATIC	Comfort and convenience
●	●	Power front seats with 3-position memory and power lumbar support
●	●	3-passenger rear seat with 40/20/40-split folding seatbacks ⁴
●	●	Folding rear center armrest
●	●	Manually adjustable tilt/telescoping steering column
●	●	Multifunction steering wheel with Touch Control Buttons
●	●	Steering wheel with leather trim
●	●	Power glass Panorama roof with power interior sunshade
●	●	Dual-zone automatic climate control with dust/pollen and odor filters
●	●	Front and rear cupholders
●	●	Amber ambient cabin lighting
●	●	Rain-sensing windshield wipers
●	●	Heated power side mirrors
●	●	Outside temperature display

Entertainment and navigation		
●	●	7" high-resolution digital instrument cluster
●	●	7" high-resolution color touchscreen multimedia display
●	●	Console-mounted central touchpad controller with multitouch gestures (swipe, pinch to zoom)
●	●	Color multifunction display (integrated with instrument cluster)
●	●	Mercedes-Benz User Experience (MBUX)
●	●	"Hey, Mercedes" voice assistant with Natural Language Understanding
●	●	Smartphone Integration with Apple CarPlay [™] and Android Auto ¹³
●	●	Bluetooth [®] audio streaming
●	●	Hands-free Bluetooth interface
●	●	Five USB-C ports ¹⁴
●	●	HD Radio [®] receiver
●	●	3 years of Mercedes me connect services ²

A 220	A 220 4MATIC	Option Packages
○	○	Premium Package <ul style="list-style-type: none"> Blind Spot Assist with Exit Warning Assist¹⁰ 10.25" digital instrument cluster display 10.25" touchscreen multimedia display Auto-dimming driver-side and inside rearview mirrors Power-folding side mirrors KEYLESS-GO[®] HANDS-FREE ACCESS trunk opener
○	○	Multimedia Package <i>Requires Premium Pkg</i> <ul style="list-style-type: none"> MB Navigation¹¹ MBUX Augmented Video for Navigation 3 years of no-charge online navigation map updates² 3 years of Live Traffic Information² Speed Limit Assist
○	○	Exterior Lighting Package <ul style="list-style-type: none"> Active LED headlamps Adaptive Highbeam Assist
○	○	Driver Assistance Package <i>Requires Multimedia Pkg</i> <ul style="list-style-type: none"> Active Distance Assist DISTRONIC[®], Active Steering Assist²⁰ Active Lane Change Assist,²¹ Evasive Steering Assist²² Active Brake Assist with Cross-Traffic Function²³ Congestion Emergency Braking, Active Emergency Stop Assist Active Lane Keeping Assist,¹⁹ Active Blind Spot Assist¹⁰ Active Speed Limit Assist, Route-based Speed Adaptation²⁴ PRE-SAFE,[®] PRE-SAFE PLUS rear impact preparation, and PRE-SAFE Sound hearing protection technology⁸
○	○	Parking Assistance Package <i>Requires Blind Spot Assist, Premium Pkg or Driver Assistance Pkg</i> <ul style="list-style-type: none"> Active Parking Assist⁹ Surround View System⁶
○	○	AMG Line <i>Available with select interior colors (see next page)</i> <ul style="list-style-type: none"> AMG body styling; chrome-tipped diamond-block grille 18" AMG[®] twin 5-spoke wheels,¹ silver Perforated front brakes with painted calipers Lowered comfort suspension; Direct-steer Sport front seats Sport steering wheel; aluminum shift paddles Brushed metal pedals; AMG floor mats
○	○	Night Package <i>Requires AMG Line</i> <ul style="list-style-type: none"> Gloss Black exterior accents 18" AMG twin 5-spoke wheels¹ w/black accents

A 220	A 220 4MATIC	Individual options
○	○	Blind Spot Assist with Exit Warning Assist <i>Also in Premium Pkg; NA with Driver Assistance Pkg (includes Active Blind Spot Assist)</i>
○	○	KEYLESS-GO <i>Also in Premium Pkg</i>
○	○	Garage door opener <i>Requires Premium Pkg</i>
○	○	Adjustable suspension with Adaptive Damping System
○	○	Head-Up Display ¹⁴
○	○	64-color LED ambient lighting with illuminated dash vents
○	○	Heated front seats
○	○	Heated and ventilated front seats <i>NA with MB-Tex/DINAMICA upholstery</i>
○	○	Multicontour front seats <i>Requires Black or Macchiato Beige MB-Tex upholstery</i>
○	○	Heated steering wheel <i>Replaces sport steering wheel in AMG Line</i>
○	○	Burmester [®] Surround Sound System
○	○	SiriusXM [®] 6-month All Access trial ²⁵
○	○	Inductive wireless charging and NFC pairing ¹⁵
●	●	17" 10-spoke wheels ¹
▲	▲	17" twin 5-spoke wheels, ¹ matte grey
○	○	18" 5-spoke wheels ¹ w/black accents
○	○	19" AMG multispoke wheels ¹ <i>Requires AMG Line</i>
○	○	19" AMG multispoke wheels, ¹ black <i>Requires Night Pkg</i>
▲	▲	MB-Tex upholstery
▲	▲	MB-Tex/DINAMICA upholstery w/Red stitching <i>Requires AMG Line</i>
○	○	Leather upholstery with topstitched MB-Tex upper dash trim <i>Requires heated and/or ventilated front seats; includes sport front seats</i>
●	●	Aluminum trim with linear grain
▲	▲	Brushed aluminum trim with longitudinal grain
○	○	Natural Grain Black Linden wood trim
○	○	Natural Grain Brown Walnut wood trim <i>Requires Black MB-Tex or leather Macchiato Beige MB-Tex, or Bahia Brown leather upholstery.</i>
○	○	Metallic paintwork

UPHOLSTERY



MB-Tex

● All models



MB-Tex
with sport front seats

▲ All models Requires AMG Line



MB-Tex/DINAMICA
with sport front seats

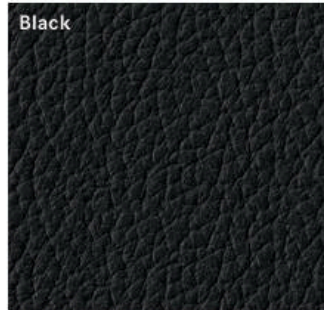
▲ All models Requires AMG Line



Leather
with sport front seats

○ All models

UPHOLSTERY COLORS



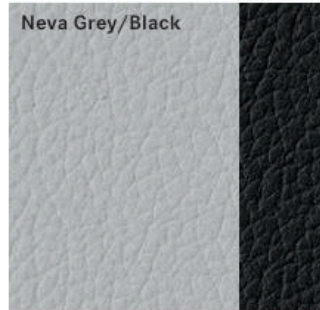
Black

MB-Tex NA w/AMG Line



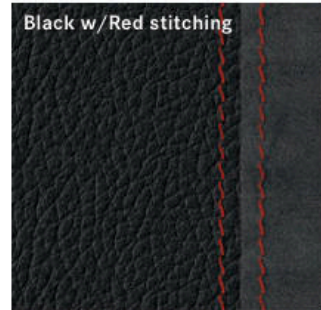
Macchiato Beige

MB-Tex NA w/AMG Line



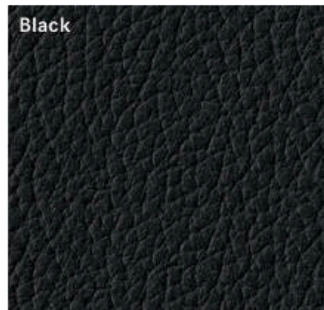
Neva Grey/Black

MB-Tex Requires AMG Line



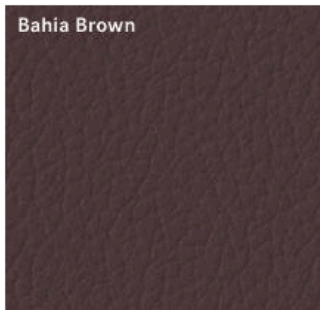
Black w/Red stitching

MB-Tex/DINAMICA Requires AMG Line



Black

Leather



Bahia Brown

Leather



Classic Red/Black

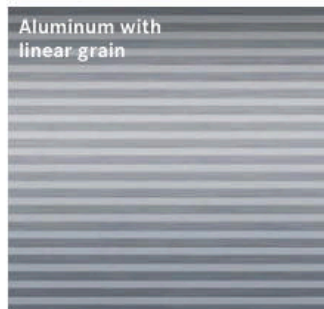
Leather Requires AMG Line



Titanium Grey/Black

Leather Requires AMG Line

TRIM



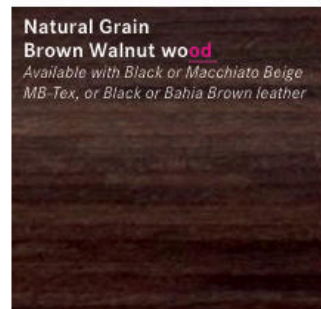
Aluminum with linear grain



Brushed aluminum with longitudinal grain

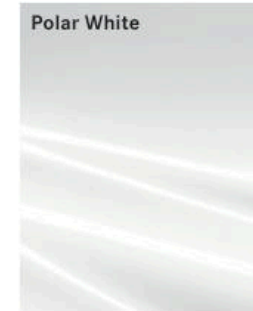


Natural Grain Black Linden wood

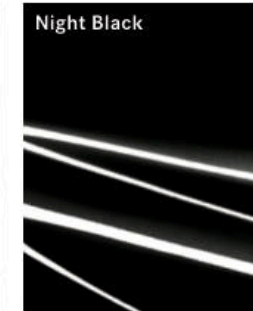


Natural Grain Brown Walnut wood
Available with Black or Macchiato Beige MB-Tex, or Black or Bahia Brown leather

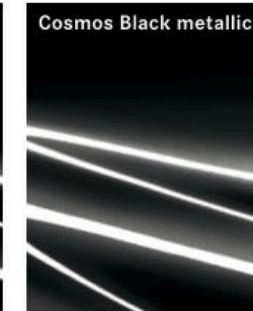
PAINTWORK



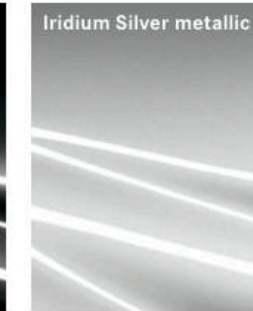
Polar White



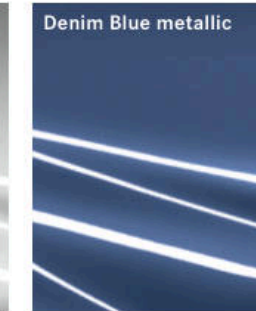
Night Black



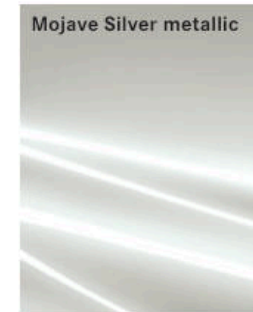
Cosmos Black metallic



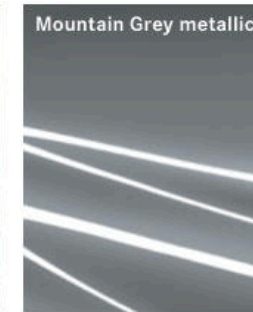
Iridium Silver metallic



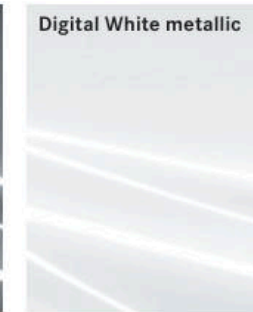
Denim Blue metallic



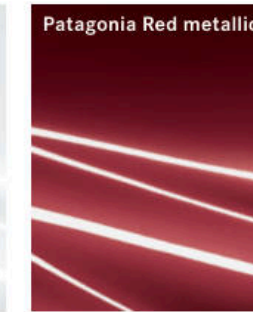
Mojave Silver metallic



Mountain Grey metallic



Digital White metallic



Patagonia Red metallic

WHEELS



17" 10-spoke
● All models



17" twin 5-spoke
matte grey
▲ All models



18" 5-spoke
w/black accents
○ All models



18" AMG® twin 5-spoke
○ All models
AMG Line



18" AMG twin 5-spoke
w/black accents
○ All models
Night Pkg



19" AMG multispoke
○ All models
Requires AMG Line



19" AMG multispoke
black
○ All models
Requires Night Pkg

● Standard ○ Optional ▲ No-charge option

THE DIFFERENCE IS IN EVERY EXPERIENCE

The moment you take delivery of your new Mercedes-Benz, it starts to deliver for you. The joys of driving are engineered to excite and endure. Its progressive technology is designed to keep you connected now, and at the forefront of a changing world. And the people who stand behind your Mercedes-Benz are devoted to earning their Star, and your trust.

Daily commute or roadtrip, thoughtful technology helps make any journey a joy.

Mercedes me connect puts a network of features in your car, on your smartphone, and in the digital world around you.² And all of them collaborate to help keep you on track, on time, and feeling you're on top of your real world.

- You can remote-start your car, locate where it's parked, configure vehicle settings from your phone, and more.
- You can look up destinations on your phone and send them to the MB Navigation system in your car.
- You can offer WiFi to your passengers, and enjoy audio from all over the planet with TuneIn Radio.

Your car's MB Navigation map database can be updated in your driveway, over the air, up to twice a year for three years. There's no need to bring it to the dealership.

Wherever you drive, there's a team of supportive people looking out for you.

Mercedes-Benz was the first automaker to introduce its own **Roadside Assistance Program** in the US. For more than 35 years, customers have called on—and counted on—factory-trained experts in times of need.²⁶

- A button in your car can connect you. If an air bag or seat-belt tensioner is activated, your car can place the call on your behalf, and even transmit your location.
- They can send help—usually a trained dealer service technician—to your location, even for a jump-start.
- If you see a warning light, so can the experts, and they can often help diagnose trouble over the phone.

Mercedes me Concierge can fulfill a range of requests like hotel and restaurant reservations for a monthly fee.

- They can look up a destination or point of interest for you, then download it right to your car's MB Navigation.
- They can give turn-by-turn directions as you drive.

Committed to Community

Mercedes-Benz USA is committed to educating and empowering the next generation of diverse leaders. To help equip them with the tools for success, MBUSA partners with two national organizations that invest in the futures of young people in communities across the country. As a Mercedes-Benz driver, you become a part of this effort to give hundreds of thousands of youth a better life today, and all of us a brighter tomorrow. *Learn more about how Mercedes-Benz USA gives back at MBUSA.com/community*



A nationwide network of youth sports programs, Laureus Sport for Good USA is focused on improving the health, education, employment and social cohesion of youth in underserved communities. Since 2012, Laureus USA has helped nearly half a million young people in 150 cities. *To learn more, visit laureususa.com*



Your Mercedes-Benz experience should always feel special.

Driving a Mercedes-Benz feels like joining a club, as well as a family. Wherever you go, you're part of a history that started with the first car, and always keeps racing ahead.

- For decades, groundbreaking innovations have protected, entertained and indulged Mercedes-Benz drivers first. While many have gone on to become the standard for all cars, you get to drive the future, today.
- From the AMG Lounge to #MBPhotoPass on Instagram, Mercedes-Benz owners have many ways to connect and interact.

Your car and your dealer are in on it, too.

- *Mercedes me* lets your car communicate its service needs to your preferred dealer.
- Your dealer can reach out to you to book an appointment or offer drive-in service.

JOHNNY MAC SOLDIERS FUND

Johnny Mac Soldiers Fund helps honor military service and sacrifice by providing scholarships to veterans and military family members—particularly the children of our nation's fallen and disabled. Since 2014, Johnny Mac has awarded \$12 million in scholarships to more than 1,000 students. *To learn more, visit johnnymac.org*

ENDNOTES

- * Item is optional or not available on some models. See Packages and Options listing in this brochure or visit MBUSA.com for more information.
- 1 Lower-aspect-ratio tires and accompanying wheels provide substantially increased treadwear, increased tire noise and reduced ride comfort. Serious wheel and tire damage may occur if the vehicle is operated on rough or damaged road surfaces or upon encountering road debris or obstacles. These tires are not designed for use on snow and ice. Winter tires mounted on appropriately sized and approved wheels are recommended for driving in those conditions.
- 2 All *Mercedes me* services operate only where cellular and GPS signals are available, which are provided by third parties and not within the control of Mercedes-Benz USA, LLC. *Mercedes me connect assist* services, and 3 years of *Mercedes me connect* services are included at no additional charge with new-vehicle sales and leases at an authorized Mercedes-Benz dealer. Models with MB Navigation also include 3 years of over-the-air map updates (up to twice per year), 3 years of live traffic information provided by HERE Technologies, 1 year of Concierge Service, and a 1-month trial (up to 1GB) of in-vehicle WiFi and streaming audio. Subscriber Agreement is required for service to be active. Some services are only available on select vehicles. Your PIN is required to use certain services. Connection may be limited by cellular signal and other factors. Features may be introduced and updated at varying dates, and may also require a vehicle software update. Some services may be limited or restricted in some areas. Driver is responsible for complying with traffic and other laws. The *Mercedes me connect* Mobile App is compatible with Apple iPhone® models and Android-based phones, and may require a software update. See your dealer or MBUSA.com/mercedesme for details.
- 3 No system, regardless of how advanced, can overcome the laws of physics or correct careless driving. Please always wear your seat belt. Performance is limited by available traction, which snow, ice and other conditions can affect. Always drive carefully, consistent with conditions. Best performance in snow is obtained with winter tires.
- 4 Unsecured cargo can become hazardous in a collision. Always secure cargo using the floor-mounted tie-downs.
- 5 Active Brake Assist may not be sufficient to avoid an accident. It does not react to certain stationary or suddenly moving objects or pedestrians, may not react in certain situations where objects cannot be clearly identified, nor does it recognize or predict the curvature and/or lane layout of the road or every movement of vehicles and pedestrians ahead. It is the driver's responsibility at all times to be attentive to traffic and road conditions, and to provide the steering, braking and other driving inputs necessary to retain control of the vehicle. Drivers are cautioned not to wait for the system's alerts before braking, as that may not afford sufficient time and distance to brake safely. See Operator's Manual for system operating speeds and additional information and warnings.
- 6 Rearview camera and Surround View System do not audibly notify driver of nearby objects and are not a substitute for actively checking around the vehicle for any obstacles or people. Images displayed may be limited by camera field of view, weather, lighting conditions and the presence of dirt, ice or snow on the cameras.
- 7 Even the most advanced safety systems may not be sufficient to avoid an accident. Please refer to more detailed information on specific systems elsewhere in this brochure, at MBUSA.com, and in the vehicle's Operator's Manual. Some systems may be optional.
- 8 PRE-SAFE® closes the side windows when the system's sensors detect side movements that suggest a possible rollover or side impact. A small gap is left near the fully closed position. System cannot prevent a collision, and does not alert the driver of an impending collision or system activation. PRE-SAFE PLUS does not intervene if vehicle is backing up, and does not apply the brakes if the driver is accelerating or if Active Parking Assist is operating. Audio/multimedia system must be turned on for PRE-SAFE Sound to operate.
- 9 Parking assistance systems are not substitutes for driver attention to the immediate surroundings, as well as any people, animals or vehicles in or approaching the vehicle's maneuvering range. System cannot determine if a space is legally available or of a suitable surface for parking. See Operator's Manual for additional information, tips and warnings.
- 10 Blind Spot Assist is a warning system only. Blind Spot Assist or Active Blind Spot Assist may not be sufficient to avoid all accidents involving vehicles in your blind spot and does not estimate the speed of approaching vehicles. It must not be used as a substitute for driver awareness and checking of surrounding traffic conditions. Exit Warning Assist feature operates up to three minutes after vehicle is switched off, or until indicator in mirror flashes three times. See Operator's Manual for system's operating speeds and additional information and warnings.
- 11 While the navigation system provides directional assistance, the driver must remain focused on safe driving behavior, including paying attention to traffic and street signs. The driver should utilize the system's audio cues while driving and should only consult the map or visual displays once the vehicle has been stopped in a safe place. Maps do not cover all areas or all routes within an area, may require periodic updating, and may not reflect recent or temporary changes to roadways.
- 12 Speed Limit Assist does not adjust vehicle speed, and is not a substitute for driver awareness to posted speed limits and other conditions. Driver is responsible for safely operating vehicle in accordance with local traffic laws and driving conditions.
- 13 Apple CarPlay™ is a product of Apple Inc. Android Auto is a product of Google Inc. Device and app providers' terms and privacy statements apply. Requires connected compatible device and data plan. Apps, content and features are selected solely by their providers. Connection to apps and streaming services may be limited by the device's network connection. Data usage is routed through device and subject to fees, charges and restrictions in user's wireless plan. Vehicle's factory audio/information interface may not be used simultaneously with Apple CarPlay or Android Auto. When Apple CarPlay or Android Auto is in use, the steering-wheel voice control button accesses Siri® or Google voice recognition software for voice commands.
- 14 An adapter cable is required to connect a device with an earlier-generation USB port.
- 15 Wireless charging and NFC pairing available only for devices with compatible technology and size. See Operator's Manual for more information. Devices sold separately.
- 16 Display may not be visible with certain eyewear, including polarized glasses.
- 17 2020 EPA estimated fuel economy. Compare the estimated mpg to the estimated mpg of other vehicles. You may get different mileage depending on how fast you drive, weather conditions and trip length.
- 18 Stated rates of acceleration are estimated based upon manufacturer's track results and may vary depending on model, environmental and road surface conditions, driving style, elevation and vehicle load.
- 19 Driving while drowsy or distracted is dangerous and must be avoided. ATTENTION ASSIST™ is a warning system only. ATTENTION ASSIST and Active Lane Keeping Assist may be insufficient to alert a fatigued or distracted driver of lane drift and cannot be relied on to avoid an accident or serious injury. See Operator's Manual for system's operating speeds and additional information and warnings.
- 20 Active Distance Assist DISTRONIC® cruise control is not a substitute for active driving involvement. It does not adapt cruising speed in response to stationary objects, nor does it predict the curvature and lane layout of the road ahead or the movement of vehicles ahead. Active Steering Assist requires driver to hold steering wheel and be ready to steer vehicle at any time. It may not recognize lane markings in some lighting, weather and road conditions. It is the driver's responsibility at all times to be attentive to traffic and road conditions, and to provide the steering, braking and other driving inputs necessary to retain control of the vehicle. Drivers are cautioned not to wait for the system's alerts before braking, as that may not afford sufficient time and distance to brake safely.
- 21 Active Lane Change Assist is not a substitute for active driving involvement. It estimates but does not predict the curvature and lane layout of the road ahead or the movement of vehicles ahead. It is the driver's responsibility at all times to be attentive to traffic and road conditions, and to provide the driving inputs necessary to retain control of the vehicle. System may not detect some objects, obstacles or vehicles in the area into which the vehicle would move. See Operator's Manual for system operating speeds and additional information and warnings.
- 22 No system, regardless of how advanced, can overcome the laws of physics or correct careless driving. Please always wear your seat belt. Driver's deliberate steering inputs are required to initiate the system's action, and can override its intervention at any time. See Operator's Manual for system operating speeds and additional information and warnings.
- 23 Drivers are cautioned not to wait for the system's alerts before braking, as that may not afford sufficient time and distance to brake safely. Braking effectiveness also depends on proper brake maintenance, and tire and road conditions. See Operator's Manual for system operating speeds and additional information and warnings.
- 24 Driver is responsible for safely slowing and/or stopping vehicle at intersections, and for giving right-of-way to other drivers. System is not a substitute for driver awareness to posted speed limits and other conditions. Driver is responsible for safely operating vehicle in accordance with local traffic laws and driving conditions.
- 25 The purchase of a new, SiriusXM®-equipped vehicle includes a 6-month introductory subscription to the SiriusXM All Access package. Eligible pre-owned vehicles equipped with SiriusXM will receive a 3-month trial subscription to SiriusXM All Access package. Trial length and service availability may vary by model, model year or trim. If you decide to continue your subscription after your trial, the plan you choose will automatically renew and you will be charged according to your chosen payment method at then-current rates. Fees and taxes apply. To cancel you must call SiriusXM at 1-866-635-2349. See SiriusXM Customer Agreement for complete terms at siriusxm.com. All fees and programming subject to change.
- 26 Roadside Assistance repairs may involve charges for parts, service and towing. Vehicle must be accessible from main roads. Depending on the circumstance, these services may be provided by an outside provider, courtesy of Mercedes-Benz Roadside Assistance. Restricted roadways, acts of nature and vehicle accessibility may limit our ability to provide services to you. For full details, eligibility requirements, and limitations/exclusions of Sign and Drive services, as well as the Roadside Assistance Program, please see your dealer.